

University of Louisville

## ThinkIR: The University of Louisville's Institutional Repository

---

Faculty Scholarship

---

7-2012

### Evolution in the dust lane fraction of edge-on L<sup>\*</sup>v spiral galaxies since $z = 0.8$ .

Benne W. Holwerda  
*University of Louisville*

J. J. Dalcanton  
*University of Washington - Seattle Campus*

D. Radburn-Smith  
*University of Washington - Seattle Campus*

R. S. de Jong  
*Leibniz-Institut für Astrophysik Potsdam*

P. Guhathakurta  
*University of California, Santa Cruz*

*See next page for additional authors*

Follow this and additional works at: <https://ir.library.louisville.edu/faculty>



Part of the [Astrophysics and Astronomy Commons](#)

---

#### Original Publication Information

Holwerda, B. W., et al. "Evolution in the Dust Late Fraction of Edge-on L<sup>\*</sup>v Spiral Galaxies Since  $z = 0.8$ ." 2012. *The Astrophysical Journal* 753(1): 9 pp.

This Article is brought to you for free and open access by ThinkIR: The University of Louisville's Institutional Repository. It has been accepted for inclusion in Faculty Scholarship by an authorized administrator of ThinkIR: The University of Louisville's Institutional Repository. For more information, please contact [thinkir@louisville.edu](mailto:thinkir@louisville.edu).

---

**Authors**

Benne W. Holwerda, J. J. Dalcanton, D. Radburn-Smith, R. S. de Jong, P. Guhathakurta, A. Koekemoer, R. J. Allen, and T. Boker

## EVOLUTION IN THE DUST LANE FRACTION OF EDGE-ON $L_V^*$ SPIRAL GALAXIES SINCE $z = 0.8$

B. W. HOLWERDA<sup>1</sup>, J. J. DALCANTON<sup>2</sup>, D. RADBURN-SMITH<sup>2</sup>, R. S. DE JONG<sup>3</sup>, P. GUHATHAKURTA<sup>4</sup>,  
A. KOEKEMOER<sup>5</sup>, R. J. ALLEN<sup>5</sup>, AND T. BÖKER<sup>1</sup>

<sup>1</sup> European Space Agency (ESA), ESTEC, Keplerlaan 1, Noordwijk, 2200 AG, The Netherlands; [benne.holwerd@esa.int](mailto:benne.holwerd@esa.int)

<sup>2</sup> Department of Astronomy, University of Washington, Box 351580, Seattle, WA 98195, USA

<sup>3</sup> Leibniz Institut für Astrophysik Potsdam (AIP), An der Sternwarte 16, 14482 Potsdam, Germany

<sup>4</sup> Department of Astronomy & Astrophysics, University of California Observatories/Lick Observatory, University of California, Santa Cruz, CA 95064, USA

<sup>5</sup> Space Telescope Science Institute, 3700 San Martin Drive, Baltimore, MD 21218, USA

Received 2011 June 10; accepted 2012 April 11; published 2012 June 12

### ABSTRACT

The presence of a well-defined and narrow dust lane in an edge-on spiral galaxy is the observational signature of a thin and dense molecular disk, in which gravitational collapse has overcome turbulence. Using a sample of galaxies out to  $z \sim 1$  extracted from the COSMOS survey, we identify the fraction of massive ( $L_V^*$ ) disks that display a dust lane. Our goal is to explore the evolution in the stability of the molecular interstellar medium (ISM) disks in spiral galaxies over a cosmic timescale. We check the reliability of our morphological classifications against changes in rest-frame wavelength, resolution, and cosmic dimming with (artificially redshifted) images of local galaxies from the Sloan Digital Sky Survey. We find that the fraction of  $L_V^*$  disks with dust lanes in COSMOS is consistent with the local fraction ( $\approx 80\%$ ) out to  $z \sim 0.7$ . At  $z = 0.8$ , the dust lane fraction is only slightly lower. A somewhat lower dust lane fraction in starbursting galaxies tentatively supports the notion that a high specific star formation rate can efficiently destroy or inhibit a dense molecular disk. A small subsample of higher redshift COSMOS galaxies display low internal reddening ( $E[B - V]$ ), as well as a low incidence of dust lanes. These may be disks in which the growth of the dusty ISM disk lags behind that of the stellar disk. We note that at  $z = 0.8$ , the most massive galaxies display a lower dust lane fraction than lower mass galaxies. A small contribution of recent mergers or starbursts to this most massive population may be responsible. The fact that the fraction of galaxies with dust lanes in COSMOS is consistent with little or no evolution implies that models to explain the spectral energy distribution or the host galaxy dust extinction of supernovae based on local galaxies are still applicable to higher redshift spirals. It also suggests that dust lanes are long-lived phenomena or can be reformed over very short timescales.

*Key words:* dust, extinction – evolution – galaxies: evolution – galaxies: fundamental parameters – galaxies: ISM – galaxies: spiral – galaxies: statistics – galaxies: structure – ISM: structure

*Online-only material:* color figures

### 1. INTRODUCTION

Highly inclined galaxies often show a dark band through their mid-plane caused by the dusty interstellar medium (ISM), which absorbs a large fraction of the optical light. Dalcanton et al. (2004, D04 hereafter) linked the presence of a dust lane to the vertical stability of the ISM. Less massive spiral disks show a much more vertically fractured dust morphology, as turbulence, driven in part by stellar winds and supernovae, wins out over the gravitational collapse toward the mid-plane. Specifically, D04 found that bulgeless undisturbed spirals with  $v_{\text{rot}} > 120 \text{ km s}^{-1}$  consistently display dust lanes, while less massive disks do not. D04 selected their galaxy sample to be “pure” disks, i.e., without a spheroidal stellar bulge. When one considers galaxies with bulges as well, dust lanes become common at  $150 \text{ km s}^{-1}$  (Obric et al. 2006). Dust lane prevalence in massive edge-on disks can be seen in the reddening of their stellar populations (e.g., Seth et al. 2005), or the relative symmetry of star formation tracers ( $24 \mu\text{m}$  and  $\text{H}\alpha$ ; Kamphuis et al. 2007), as well as direct optical imaging (e.g., Howk & Savage 2000; Thompson et al. 2004; Howk 2005; Yoachim & Dalcanton 2006; Watson et al. 2011). The results from these studies are consistent with models of the spectral energy distribution of these systems (e.g., Popescu et al. 2000; Popescu & Tuffs 2005; Pierini et al. 2004; Baes et al. 2003, 2010; Bianchi et al. 2000; Bianchi 2007, 2008; Jonsson et al. 2010; Holwerda et al. 2012a).

Many of the morphological features of spiral disks can be expected to change in the course of their (secular) evolution, including the scale length (Ravindranath et al. 2004; Trujillo & Aguerri 2004; Kanwar et al. 2008), surface brightness (Barden et al. 2005; Cameron & Driver 2007; Scarlata et al. 2007), and truncation radius (Trujillo & Pohlen 2005; Azzollini et al. 2008) of the stellar disk, as well as the bulge-to-disk ratio (Allen et al. 2006; Pannella et al. 2009) and bar fraction (Jogee et al. 2004; Barazza et al. 2008; Sheth et al. 2008). All these morphological features of the stellar disk have been explored using deep imaging surveys with the *Hubble Space Telescope* (*HST*).

The results from these studies demonstrate that, over time, massive disks grow moderately in size (both the scale length and the truncation radius), dim substantially in surface brightness ( $\sim 1 \text{ mag}$ ), and acquire bulges. The dynamical maturity of a spiral disk at high redshift—i.e., whether or not it has settled in an equilibrium—can be explored via two morphological phenomena: the presence of a stellar bar or that of a dust lane. The presence of a stellar bar is an indication that the stellar disk is no longer subjected to dynamical disturbances that prevent the stellar orbits from forming an organized bar structure. A dust lane, on the other hand, is an indication that the ISM disk is in a vertical equilibrium, no longer dominated by turbulence. Both phenomena therefore indicate that the disk had some time to settle.

As for the evolution of the bar fraction with redshift, some studies find it to be constant since  $z \sim 1$  (Jogee et al. 2004). However, there is some controversy whether this result may be biased by the inclusion of less-massive (and hence less dynamically evolved) disks in the local samples (Barazza et al. 2008; Sheth et al. 2008). By studying the dust lane fraction instead, we aim to explore an alternative diagnostic to settle this question.

From first principles, equally plausible arguments can be made to expect a higher, lower, or constant dust lane fraction at earlier epochs. On one hand, one might expect *fewer* dust lanes in massive spiral disks at high redshift because (1) specific star formation, the driving force of ISM turbulence, was a factor of three higher at higher redshift for a given stellar mass galaxy (Noeske et al. 2007a, 2007b),<sup>6</sup> which would then lead to thicker ISM disks, and (2) molecular and dusty disks are still growing and may not yet match their stellar counterpart in size, so that they are not easily recognized against the stellar background. On the other hand, there are comparable arguments as to why the dust lane fraction should stay constant or even decline with time. First, massive spirals should already be evolved enough at  $z \sim 1$  to have their dusty ISM collapsed into a thin disk (e.g., Bournaud et al. 2009; Martig et al. 2012). Second, the fragmentation of a dust lane due to turbulence predominantly occurs in low-mass halos (D04), implying that the dust lane fraction for massive  $L_V^*$  galaxies remains constant. Finally, a dense molecular phase is predicted to dominate higher redshift galaxies (Obreschkow & Rawlings 2009b), ensuring the presence of a dense ISM from which dust lanes can form early on.

This paper seeks to explore the possible evolution in the dust lane fraction. In Sections 2 and 3, we discuss the data and dust lane classification. In Sections 4 and 5, we present the derived dust lane statistics and a first-order check for observational biases. We analyze, discuss, and summarize our results in Sections 6, 7, and 8.

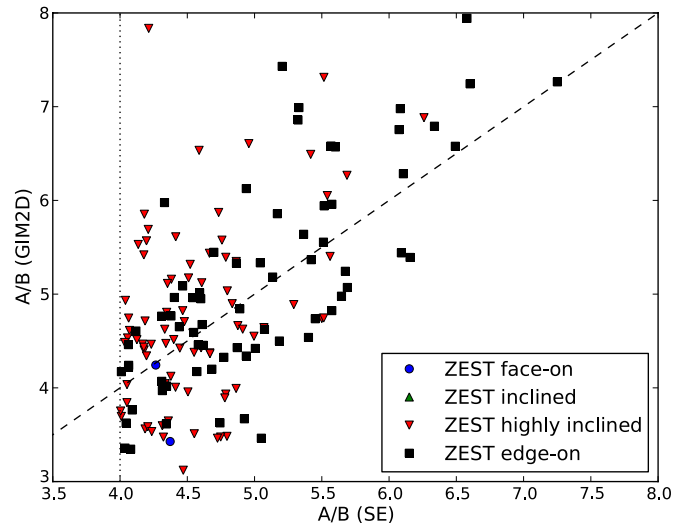
## 2. DATA

We select edge-on  $L_V^*$  galaxies from two public catalogs. Our primary galaxy sample is extracted from the *HST* COSMOS survey (Scoville et al. 2007a). For comparison, and as a local reference sample, we use the seventh data release from the Sloan Digital Sky Survey (SDSS-DR7; Abazajian et al. 2009). Our sample selection criteria are similar to those for face-on massive spirals used by Sheth et al. (2008) but with axis ratios set to select flat galaxies (similar to Karachentsev et al. 1993; Kautsch 2009).

### 2.1. COSMOS

For our sample of highly inclined galaxies in the COSMOS survey (Scoville et al. 2007a, 2007b), we combine information from the Advanced Camera for Surveys (ACS) catalog of the COSMOS field (Capak et al. 2008), the photometric redshift catalog (Mobasher et al. 2007), and the Zurich Estimator of Spiral Type catalog (ZEST; Scarlata et al. 2007). Our main requirements are that the axis ratio listed in Capak et al. (2008) is  $A/B > 4$  and rest-frame  $V$ -band absolute magnitude  $M_V < -21.7$  in the Mobasher et al. catalog. This is a fixed cut in absolute luminosity to ensure a complete sample at every redshift. The magnitude limit is set brighter than for the SDSS,

<sup>6</sup> The cosmic star formation density famously drops by an order of magnitude over the last 7–8 Gyr ago ( $z \sim 1$ ; see Hopkins et al. 2008 for the latest compilation of the “Madau” plot).



**Figure 1.** Major ( $A$ ) over minor ( $B$ ) axis ratio derived by Source Extractor (SE) and by a two-dimensional fit (GIM2D) for the ACS observations of COSMOS galaxies. The dotted line marks our selection criterion of  $A/B > 4$ , and the dashed line indicates agreement between both methods. The different symbols indicate the classifications derived by Scarlata et al. (2007), they demonstrate that the vast majority of systems are indeed highly inclined galaxies.

(A color version of this figure is available in the online journal.)

because an  $L_V^*$  galaxy fades by about one magnitude since  $z = 0.9$  (Capak 2004).

We check the reliability of the axis ratio from Source Extractor (SE) catalog of the ACS fields to select bona fide edge-on spiral galaxies in two ways: first, Figure 1 compares the axis ratio estimated by SE (Bertin & Arnouts 1996; Holwerda 2005) to that of a more detailed fit using GIM2D (Simard 1998). In general, both methods agree reasonably well, confirming that these are bona fide flat galaxies. Second, we indicate in Figure 1 the ZEST morphological classifications which classify almost all of our galaxies as highly inclined or edge-on spiral galaxies. Only two “face-on” systems were originally selected, these turn out to be interacting systems and were excluded from the sample.

The COSMOS survey is complete for  $L_V^*$  galaxies out to  $z \sim 1$  and at this redshift covers a similar volume as the whole SDSS survey. Therefore, the statistics of massive edge-on spirals in COSMOS should be reliable, at least for the higher redshift bins (see Table 2). A redshift of  $z \sim 0.9$  is the practical limit to our search, because at this distance, the rest-frame wavelength of COSMOS  $F814W$  filter corresponds to SDSS- $g$  filter which is the bluest usable SDSS passband (see Section 2.2).

We point out that an *HST* pixel corresponds to 0.4 kpc at this distance, which is comparable to the typical scale height of dust lanes ( $\sim 0.5$  kpc; see Seth et al. 2005; Kamphuis et al. 2007), so that we can readily identify dust lanes in the COSMOS images.

### 2.2. SDSS

SDSS galaxies were selected by oblateness ( $A/B \geq 4$ ), major axis ( $A > 30''$ , to ensure the selection of well-resolved objects), and for  $M_V < -20.7$ , using a combination of  $g-r$  color and  $g$ -magnitude selection.<sup>7</sup> The corresponding SQL query<sup>8</sup> yields 194 galaxies.

<sup>7</sup> Conversion to Johnson  $V$ -magnitude from SDSS was done using the tools available at [http://www.aerith.net/astro/color\\_conversion.html](http://www.aerith.net/astro/color_conversion.html) and the SDSS `fCosmoAbsMag` function, using the photometric system described in Fukugita et al. (1996).

<sup>8</sup> `G.isoA_g/G.isoB_g > 4, G.isoA_g > 30/0.4 AND S.z > 0 AND dbo.fCosmoAbsMag((G.r+1.48*(G.g-G.r)+0.17), S.z) < -20.7.`

**Table 1**  
The Redshift and the Corresponding Parameters

$z$	(1) Look-back Time (Gyr)	(2) SDSS Filter	(3) Rest-frame Wavelength (Å)	(4) Lane Fraction SDSS	(5) Lane Fraction $z$ -SDSS	(6) Agreement with SDSS- $g$ SDSS (%)	(7) $z$ -SDSS (%)
0	...	$z$	8931	0.44	0	62	...
0.114	1.41	$i$	7481	0.66	0.79	87	81
0.352	3.74	$r$	6165	0.72	0.81	85	92
0.778	6.50	$g$	4686	0.78	0.84	100	89

**Notes.** Look-back time (1), filter (2), rest-frame wavelength (3), dust lane fraction for the SDSS (4), and redshifted SDSS,  $z$ -SDSS (5). The consistency checks (6, 7) of the classifiers are expressed as the percentage of the answers (dust lane  $y/n$ ?) that agrees with the original SDSS- $g$  answers.

We used this SDSS sample to simulate the appearance of local galaxies at high redshift. For this, we produced a “redshifted” SDSS catalog ( $z$ -SDSS hereafter) by rebinning the  $u$ ,  $g$ ,  $r$ , and  $i$  images of all galaxies, cosmologically dimming them, and adding appropriate sky noise,<sup>9</sup> following the prescription from Giavalisco et al. (1996). We used the SDSS Atlas images, i.e., those with sky-pixels and other objects in the field set to blank and added the appropriate ACS sky noise. The SDSS- $z$  images were not redshifted as they do not overlap with the COSMOS  $F814W$  filter at any redshift other than zero.<sup>10</sup> We use this artificial  $z$ -SDSS catalog to check the COSMOS results for observational biases, as discussed in more detail in Section 5.

### 3. IDENTIFICATION OF DUST LANES

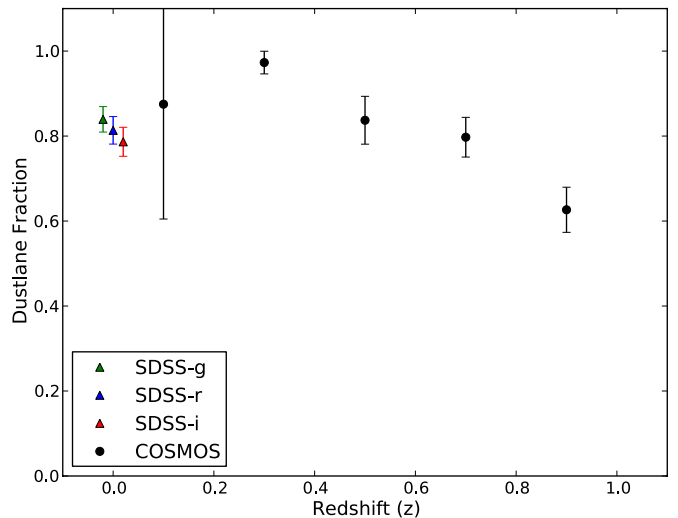
One of us (B.W.H.) identified dust lanes by eye in single filter images, after randomizing the original five filters of the SDSS, the four filters of redshifted SDSS images (see Section 5), and COSMOS images before presenting them for classification. This method provides an objective assessment of whether or not a galaxy has a dust lane because the classifier is not influenced by a previous dust lane classification in a bluer filter in SDSS or lower redshift in the redshifted SDSS images. Using a combination of zoom, rotation, and change in contrast, each galaxy was visually classified for the presence of a dark band in the plane of the disk. Identification is facilitated by the fact that a dust lane is a galaxy-wide phenomenon, but becomes rapidly more difficult as the inclination strays from edge-on ( $90^\circ$ ) inclination.

Post facto, we checked the internal consistency of the classification as a function of wavelength for the native and redshifted SDSS sample, i.e., whether the number of identified dust lanes agrees with those for SDSS- $g$  filter which serves as the local reference. Three filters (SDSS- $g$ ,  $r$ , and  $i$ ) are internally very consistent (agreement more than 80%, Table 1). The classifications in the redshifted SDSS  $g$ ,  $r$ , and  $i$  images ( $z$ -SDSS) are also very consistent with the zero-redshift SDSS- $g$  classifications, as well as internally consistent with each other (better than 80%). Thus, our classifications are reliable to 80% or better for the SDSS- $g$ ,  $r$ , and  $i$  filters or over the redshift range 0.1–0.8.

While we did classify the  $sdss$ - $u$  images, both original and redshifted images (Table 1), the resulting dust lane fractions are not usable as these images have too poor signal-to-noise

<sup>9</sup> The SDSS input pixelscale was set to  $0''.9$  in order to account for the different resolutions of the SDSS and ACS images; the resolution difference is a factor 20 while the difference in pixel scales is 8.

<sup>10</sup> *HST*/*ACS*'s filters include the exact  $sdss$ - $z$ :  $F775W$  but COSMOS observing strategy opted for the widest red filter available wide- $I$ ,  $F814W$ .



**Figure 2.** Observed dust lane fraction in luminous galaxies (brighter than  $L_V^*$ ) for the SDSS (triangles, green: SDSS- $g$ ; blue: SDSS- $r$ ; and red: SDSS- $i$ , respectively) and COSMOS galaxies (black circles). These fractions are listed in Table 2. These data are yet unmatched in rest-frame wavelength or resolution, and cannot be used to correctly infer evolution in the dust lane fraction.

(A color version of this figure is available in the online journal.)

ratio (S/N) to reliably identify dust lanes and, once redshifted, a  $\sim 1$  kpc wide dust lane is no longer resolved.

Alternative ways to identify dust lanes, a vertical color profile or a color composite image, are currently not possible with the COSMOS data as only a single filter ( $F814W$ ) is available for the *HST* observations. However, in the future, the CANDELS (The Cosmic Assembly Near-infrared Deep Extragalactic Legacy Survey; Koekemoer et al. 2011; Grogin et al. 2011) will provide near-infrared and optical images for a subsection of this and several other fields and a color-based analysis could be done with uniform data and better statistics.

### 4. INITIAL RESULTS

Figure 2 shows, as a function of redshift, the fraction of the COSMOS sample that shows a dust lane. The error estimate is based on Equation (26) in Gehrels (1986) with a confidence level of 95%, for small numbers in a redshift bin ( $N < 30$ ), and for larger numbers, we use simply  $\sigma = \sqrt{(f(1-f)/N)}$ , where  $f$  is the dust lane fraction and  $N$  is the total number of galaxies in the redshift bin (see also Desai et al. 2007; Sheth et al. 2008).

**Table 2**  
The Fraction of COSMOS and Redshifted SDSS Galaxies in Redshift Bins Corresponding to the SDSS Filter Widths

Redshift	0.063–0.089	0.089–0.28	0.28–0.38	0.38–0.62	0.62–0.95
SDSS	sdss- <i>i</i>	...	sdss- <i>r</i>	...	sdss- <i>g</i>
$z_{\text{SDSS frac}}$	$0.84 \pm 0.03$	...	$0.81 \pm 0.03$	...	$0.79 \pm 0.03$
COSMOS frac	$1.00 \pm 0.46$	$0.94 \pm 0.18$	$0.96 \pm 0.14$	$0.84 \pm 0.05$	$0.76 \pm 0.04$
$T_{\text{phot}}$					
<4	$1.00 \pm 0.46$	$1.00 \pm 0.13$	$0.96 \pm 0.14$	$0.88 \pm 0.05$	$0.78 \pm 0.04$
$\geq 4$	...	$0.50 \pm 0.44$	...	$0.67 \pm 0.30$	$0.62 \pm 0.23$
$E(B - V)$					
<0.1	...	...	$1.00 \pm 0.46$	$0.50 \pm 0.44$	$0.27 \pm 0.29$
$\geq 0.1$	$1.00 \pm 0.46$	$0.94 \pm 0.18$	$0.95 \pm 0.15$	$0.85 \pm 0.05$	$0.80 \pm 0.04$
$\log(M/M^*)$					
<0.1	$1.00 \pm 0.46$	$1.00 \pm 0.13$	$0.95 \pm 0.16$	$0.82 \pm 0.23$	$0.85 \pm 0.05$
$\geq 0.1$	...	$0.00 \pm 0.45$	$1.00 \pm 0.33$	$0.84 \pm 0.06$	$0.70 \pm 0.05$

**Notes.** Row identifications: (1) Redshift range, (2) corresponding rest-frame SDSS filter, (3) fraction of galaxies with dust lanes in redshifted SDSS sample, and (4) fraction of dust lanes in COSMOS galaxies.

The error is largest in the lowest redshift bin because COSMOS probes a smaller volume (and hence a lower number of objects) at low redshift (see Table 2). We also show the dust lane fraction in the SDSS-*g* filter as the local reference. This fraction is not as high as the one found by D04 for flat, bulgeless, massive galaxies ( $\sim 100\%$ ), but is consistent with that for a mix of Hubble types (Obric et al. 2006). The SDSS fraction rises slightly if flatter (higher values for  $A/B$ ) galaxies are considered, i.e., if the selection favors even more bulgeless galaxies. Therefore, we can discount any changes in dust lane fraction due to selection effects in the oblateness criterion.<sup>11</sup>

Taken at face value, Figure 2 indicates a peak in the dust lane fraction around  $z \sim 0.3$ , with a decrease toward both higher and lower redshift. However, this trend can, in principle, be caused by observational effects, such as the varying rest-frame wavelength of the COSMOS redshift bins (because dust extinction is more pronounced for shorter wavelengths) or the reduced resolution in images of galaxies at large distances (because a 1 kpc thick dust lane at  $z = 0.8$  is only just resolved in *HST* images). In the following section, we use the redshifted SDSS data to estimate the amplitude of such potential systematic errors before further analysis and interpretation.

## 5. SYSTEMATICS IN DUST LANE CLASSIFICATION

### 5.1. Rest-frame Wavelength

To assess the possibility that our dust lane classification is affected by the shift in rest-frame wavelength, we classified dust lanes in each SDSS filter separately (see Figures 3 and 4, for examples). In Figure 5, the triangles indicate the dust lane fraction in the SDSS sample as a function of wavelength. Each SDSS filter has been placed at the redshift at which the central wavelength of the COSMOS *F814W* filter would match that of the SDSS filter. SDSS-*z*, *i*, *r*, and *g* correspond to rest frame at  $z = 0, 0.114, 0.352$ , and  $0.778$  for the *F814W* filter, respectively (Table 1). As expected, the dust lane fraction appears to increase toward bluer rest wavelengths, due to the stronger extinction at shorter wavelengths. Therefore, this would cause an apparent evolution in the COSMOS sample that is *opposite* to what we

have found, implying that our results are not caused by any wavelength dependence in the dust lane classification.

### 5.2. Signal-to-noise Ratio

Another possible observational bias that could play a role is differences in the S/N in the images of the various SDSS filters. The SDSS-*z* images have notably lower S/N than the other filters due to the combined lower transmission of both filter and atmosphere. Therefore, the observed dust lane fraction is low in the SDSS-*z* filter due to a combination of poor S/N and low contrast of a dust lane in the reddest filter. We note that the fraction for SDSS-*g*, *r*, and *i* does not change as dramatically as from SDSS-*z* to SDSS-*i*. Combined with the poor consistency of the SDSS-*z* with SDSS-*g* (see Section 3 and Table 1), we discard SDSS-*z* as a reference. For the comparison with higher redshift, we show the dust lane fraction in SDSS-*g*, *r*, and *i* filters as the redshift zero reference in Figure 2.

### 5.3. Spatial Resolution

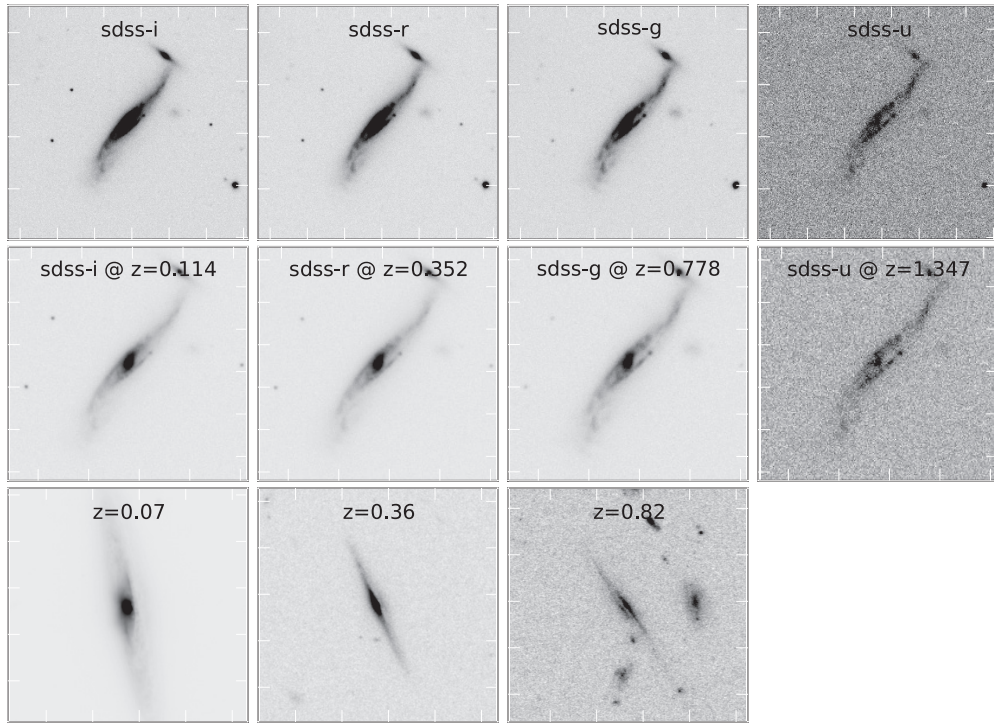
The change in rest wavelength with redshift may not be the only effect biasing the dust lane fractions. At high redshift, galaxies are less resolved, which should make dust lanes more difficult to identify. This trend would counteract the bias due to bluer rest wavelengths. A minor effect could be that at lower redshifts, the slight smoothing of the image might aid in the identification of a galaxy-wide phenomenon such as a dust lane.

To assess the total impact of these potential biases, in Figure 5, we also plot the apparent dust lane fraction for the artificially redshifted SDSS-*z* images (squares). In addition to possible effects caused by changes in rest-frame wavelength, this test should also account for the change in resolution and surface brightness. Because there is little or no significant change in the dust lane fraction between  $z \sim 0.1$  and  $z \sim 0.8$ , we conclude that the reduced resolution and S/N at high redshift at most balance the increased sensitivity to dust lanes at shorter wavelengths.

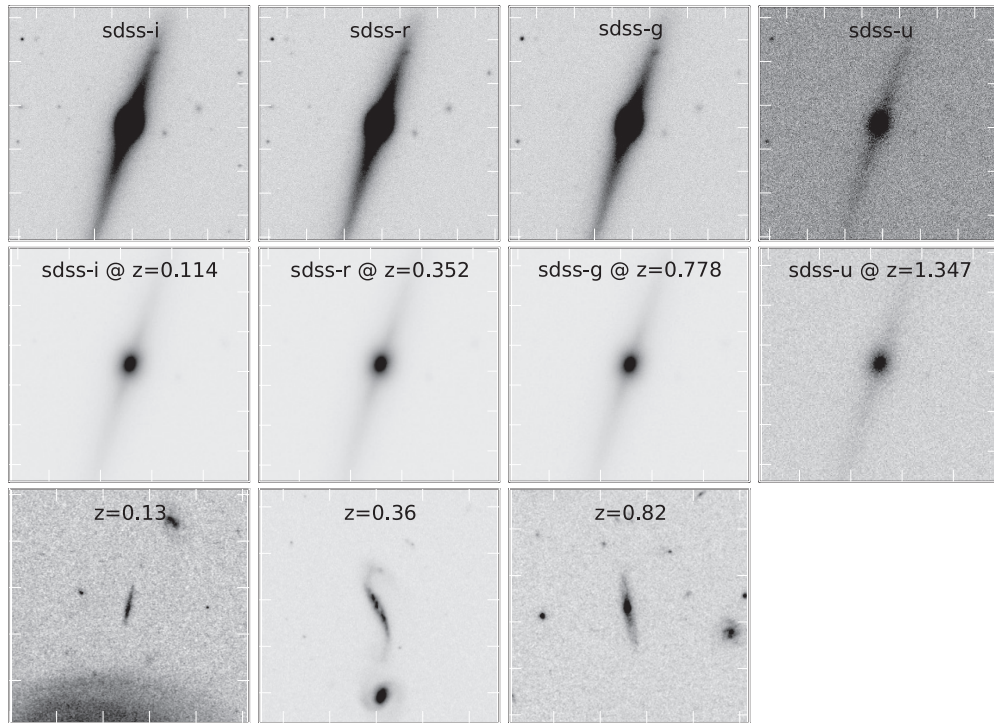
### 5.4. Filter Bandwidth

As a final check for the reliability of the observed evolution in the dust lane fraction, we compare the dust lane fraction in the redshifted SDSS images (*g*, *r*, and *i*) to that in the COSMOS galaxies whose redshifts fall within the SDSS filter's bandwidth. The *F814W* filter is much wider than the SDSS filters when

<sup>11</sup>  $A/B > 4$  is the same in SDSS at  $z = 0$  and COSMOS at  $z = 0.8$  as the respective resolutions are similar. However, at lower redshifts the COSMOS data resolve the thickness of disks better with consequently lower values for  $B$ . To select similar galaxies in SDSS, one would need a stricter  $A/B$  criterion.



**Figure 3.** Examples of the SDSS (top row), redshifted SDSS (middle row), and COSMOS (bottom) edge-on galaxies *with* dust lanes. The COSMOS examples are chosen to be as close to the SDSS redshift bin center as possible. Because no COSMOS objects were selected above  $z = 1$ , there is no comparison object for the SDSS-*u* band.

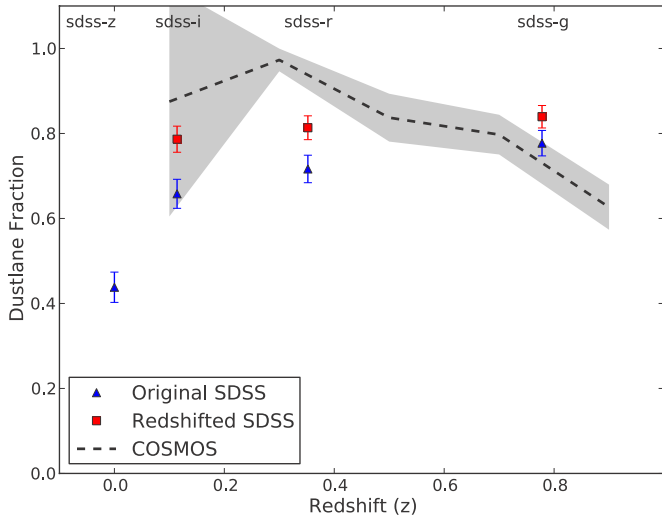


**Figure 4.** Same as Figure 3, but for galaxies *without* dust lanes.

these are shifted to the redshifts at which they correspond to the rest-frame wavelength.

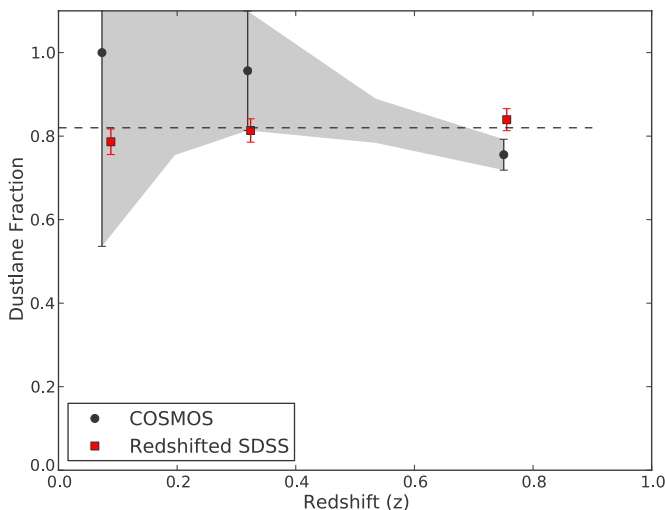
From the various options for defining the bandwidth, we chose to select COSMOS galaxies whose photometric redshifts (photo- $z$ ) fall inside the bandwidth of the SDSS filter (after it was redshifted from its central wavelength to the central wavelength of the *F814W* filter). Figure 6 shows the results

after resampling the COSMOS classifications in this way: black symbols represent those intervals for which redshifted SDSS information is available. The gray area is all the COSMOS sample, including the intervening intervals. Table 2 lists the fraction of the COSMOS sample in the bins corresponding to the redshifted SDSS filters and dust lane fraction in the intervening intervals.



**Figure 5.** Fraction of galaxies with identified dust lanes in the original SDSS images (blue triangle) and redshifted (dimmed, rebinned, etc.) SDSS images as a function of redshift. The indicated redshift corresponds to the rest-frame wavelength observed by the COSMOS *F814W* filter. The COSMOS fractions from Figure 2 are shown as a dashed line with uncertainties as the gray shaded area.

(A color version of this figure is available in the online journal.)

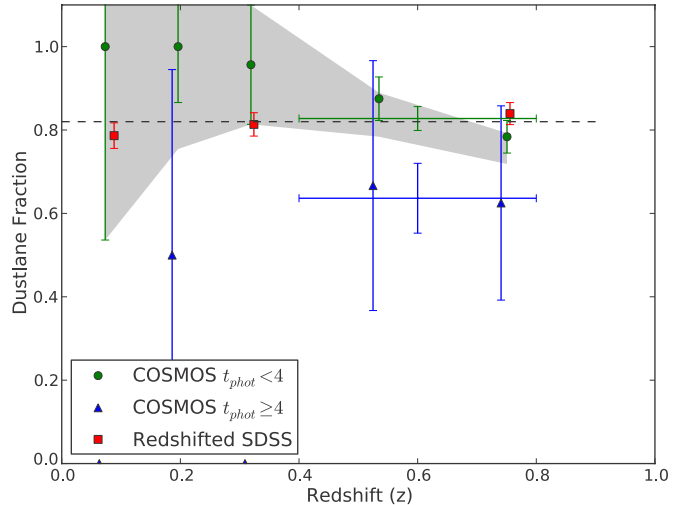


**Figure 6.** Fraction of dust lanes in the redshifted SDSS and COSMOS, selecting only those COSMOS galaxies whose photo- $z$  would place them in the bandwidth of the SDSS filter redshifted to the central wavelength of the *F814W* filter. Only the redshifted SDSS- $g$ ,  $r$ , and  $i$  are considered. The respective widths of the shifted filters are marked with the horizontal error bars. SDSS points are shifted by 0.005 redshift for clarity.

(A color version of this figure is available in the online journal.)

A constant fraction of 80% dust lanes is consistent with almost the entire redshift range probed by COSMOS. Only close to  $z \sim 0.75$  does the COSMOS fraction deviate by more than a standard deviation. The constant fraction is consistent with the redshifted SDSS images (within 95% of each point). Thus, any evolution in the dust lane fraction is with only with 95% ( $1\sigma$ ) confidence but the slight rise with redshift appears unlikely due to the previously discussed observational biases.

One remaining observational bias is that the different redshifts in COSMOS predominantly probe different environments, i.e., field versus group or cluster. If the dust lane fraction depends on environment but not secular evolution, this could mimic the redshift evolution we see in Figure 6.



**Figure 7.** Dust lane fraction of edge-on  $L_V^*$  galaxies in the COSMOS survey, sorted by star formation type ( $T_{\text{phot}}$ ) from Mobasher et al. (2007). Plotted are the full COSMOS sample (gray area), early-type SEDs ( $T_{\text{phot}} < 4$ , green circles), and late-type SEDs ( $T_{\text{phot}} \geq 4$ , blue triangles), which are extinction-free starbursts (shifted by  $z = 0.01$  for clarity). The numbers are listed in Table 2. The average for the last three redshift bins of COSMOS are indicated by the green and blue crosses without a symbol for early- and late-type SEDs, respectively.

(A color version of this figure is available in the online journal.)

## 6. ANALYSIS

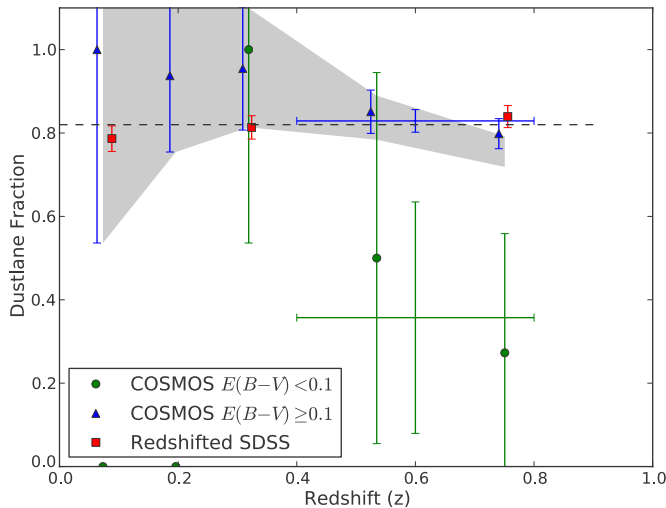
The COSMOS photometric redshift catalog of Mobasher et al. (2007) uses fits to the spectral energy distribution (SED) to provide several useful parameters for the COSMOS galaxy sample, in particular the photometric type ( $T_{\text{phot}}$ ), internal reddening ( $E[B - V]$ ), and stellar mass ( $M^*$ ). Here, we explore possible dependencies of the dust lane fraction on these parameters. We apply the same bins as Figure 6 and Table 2.

The  $T_{\text{phot}}$  parameter is a photometric Hubble type, separating red, early-type galaxies ( $T_{\text{phot}} = 1$ ) from the bluest, late-type galaxies ( $T_{\text{phot}} = 6$ ). The first four  $T_{\text{phot}}$  types are Coleman et al. (1980) templates, and the last two are from Kinney et al. (1996), these are starbursts with little internal extinction. In Figure 7, we compare the dust lane fraction of quiescent ( $T_{\text{phot}} < 4$ ) to that of star-forming ( $T_{\text{phot}} \geq 4$ ) galaxies. The latter have sufficiently accurate statistics only in the three highest redshift bins.

We note that the SED fit allows only for a small amount of reddening of the stellar template ( $E(B - V) < 0.25$ ; Mobasher et al. 2007), and in the case of edge-on spirals, one expects much higher levels of extinction. However, for a distant spiral with a clear dust lane, the SED fit is essentially made to the mostly undimmed extraplanar stellar population and the mid-plane population is too dim to be accounted for. Therefore, some of the quiescent SED galaxies may, in fact, be hosting some star-forming regions deeply embedded in the dusty structures.

The more quiescent SED galaxies ( $T_{\text{phot}} < 4$ ), which dominate the COSMOS population, show the gradual increase in dust lane fraction that is nevertheless consistent with a constant fraction of 80%, similar to the full COSMOS sample and redshifted SDSS images. The star-forming galaxies ( $T_{\text{phot}} = 4-6$ ), on the other hand, have a consistently lower dust lane fraction, although the constant fraction of 80% is still within one standard deviation due to the much lower statistics for star-bursting galaxies. By combining the last three redshift bins in the COSMOS sample, the fraction of dust lanes in starbursting galaxies is significantly lower than the quiescent galaxies. A lower dust





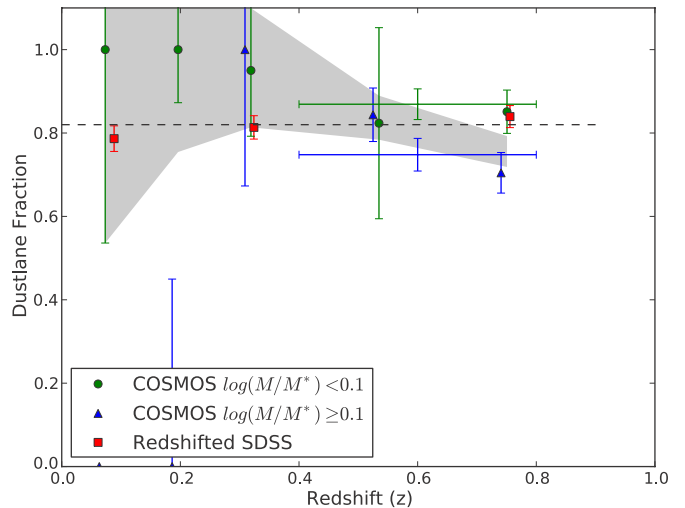
**Figure 8.** Dust lane fraction of edge-on  $L_V^*$  galaxies in the COSMOS survey, sorted by internal dust reddening of the SED as derived by Mobasher et al. (2007). Plotted are the combined COSMOS sample (gray area), reddened galaxies ( $E[B - V] > 0.1$ , blue triangles), and galaxies with little or no reddening ( $E[B - V] < 0.1$ , green circles, shifted by  $z = 0.01$  for clarity). The average for the last three redshift bins of COSMOS are indicated by the green and blue crosses without a symbol for low and high reddening, respectively. At low redshift, effectively all galaxies display evidence of reddening in their SED, but there is a small population of galaxies at higher redshift that does not show any evidence for reddening or a dust lane. The numbers are listed in Table 2.

(A color version of this figure is available in the online journal.)

lane fraction is consistent with the notion that greatly enhanced specific star formation (a starburst) destroys or inhibits the formation of a dust lane. However, a lower level of star formation can coexist with a dust lane as the star formation would inherently be deeply embedded. To give a definite answer, one would need a star formation rate estimate based on the full SED (including submillimeter to estimate the embedded star formation) and much improved statistics. To summarize, Figure 7 is consistent with a constant dust lane fraction for both populations of galaxies.

The photometric fits of Mobasher et al. (2007) also report the internal dust reddening of the SED template. Figure 8 shows the dust lane fraction for reddened ( $E[B - V] > 0.1$ ) and little or not-reddened galaxies ( $E[B - V] \leq 0.1$ ). The majority of galaxies in the COSMOS sample show reddening of their SED. The small sub-sample of galaxies that do not show reddening also has a lower incidence of dust lanes, especially at  $z = 0.7$ . To counter the poor statistics, we combine the last three redshift bins in COSMOS (crosses in Figure 8). The low- or no-extinction population is offset from the general COSMOS population with only 30% showing a dust lane.

This small subsample with no dust reddening is surprising because edge-on spirals are the objects in which one would expect dust reddening to be most pronounced, with the possible exception of (U)LIRGS or merging systems. Yet, there is a small population of edge-on disks at higher redshift with little reddening and no apparent dust lane (Table 2). If the dust lane is dispersed in these disks and there are dusty structures throughout these galaxy disks (similar to the lower mass disks in D04), one would expect some reddening of the stellar template. We speculate that in these cases, the galaxy's dusty, molecular disk is much smaller than the stellar one, possibly after losing much of their ISM to the surrounding intergalactic medium through, for instance, a galactic fountain (e.g., Sturm et al. 2011) or stripping.



**Figure 9.** Dust lane fraction of edge-on  $L_V^*$  galaxies in the COSMOS survey, sorted by stellar mass as derived by Mobasher et al. (2007). Lower and higher stellar masses are the green circles and blue triangles, respectively, the latter shifted by  $z = 0.01$  for clarity. The average for the last three redshift bins of COSMOS are indicated by the green cross for low-mass and blue cross for high-mass galaxies. Both mass ranges display similar fractions of dust lanes out to  $z \leq 0.6$ , with a deviation at  $z = 0.7$  (Table 2).

(A color version of this figure is available in the online journal.)

Finally, the dust lane fractions at different stellar masses are shown in Figure 9. The high and low mass samples are both consistent with a constant fraction of dust lanes (80%) with the exception of the points at  $z = 0.7$ . Here, the higher mass galaxies display a lower dust lane fraction, while the lower mass galaxies are consistent with the SDSS and the constant fraction of 80%. If we average over the last three redshift bins to improve statistics (crosses with no symbols in Figure 9), the discrepancy between high- and low-mass galaxies remains. This implies a reversal of the relation between mass and occurrence of dust lanes seen in D04. However, both samples consist of massive galaxies as per the definition of D04 ( $v_{\text{rot}} > 120 \text{ km s}^{-1}$ ). One could speculate that the fraction of the massive spirals in COSMOS at  $z = 0.7$  has recently undergone a major merger (as most massive spirals are predicted to have since  $z \sim 1$ ). Thus, in some massive disks, a few of the dust lanes are now missing. The break in dust lane fraction observed by D04 occurs below a stellar mass of  $0.1 M^*$ . The starburst galaxies in Figure 7 could be those massive disks that are missing their dust lane.

## 7. DISCUSSION

The main assumption in D04 and this paper is that dust traces the coldest, often molecular, phase of the ISM. This assumption is based on both observational data (e.g., Allen et al. 1986; Vogel et al. 1988; Rand 1995; Planck Collaboration et al. 2011; Holwerda et al. 2012a, 2012b), and theoretical arguments, which suggest that dust and molecular gas have slow relative drift velocities (Weingartner & Draine 2001). Furthermore, dust acts as a catalyst for molecular hydrogen ( $\text{H}_2$ ) production (Cazaux & Tielens 2004), and dust shields the molecular gas from dissociation by ultraviolet radiation. Our finding that the dust lane fractions seem independent of redshift out to  $z = 0.7$  (Figure 6) therefore implies that the global state of the ISM in large spiral disks has not changed over the past 7 Gyr. We emphasize that this statement is valid only for the galaxy population as a whole, and that *in individual disks*, dust lanes may well be destroyed and re-formed on short timescales.

Taken at face value, however, the constant fraction over time suggests that dust lanes are a long-lived phenomena.

The observation that approximately the same number of massive galaxies have thin dusty molecular disks at  $z = 0.8$  has significant implications for models of their emission and the supernovae they host. For instance, SED models of local massive edge-on systems are still suitable for explaining the characteristics of these higher redshift systems (e.g., Xilouris et al. 1999; Gordon et al. 2001; Misselt et al. 2001; Bianchi 2007, 2008; Baes et al. 2003, 2010; Bianchi & Xilouris 2011; Holwerda et al. 2012a, 2012b; Schechtman-Rook et al. 2012a, 2012b). The SNIa light curve fits of Dark Energy Cosmology depend on a host galaxy dust extinction prior based on a flat dusty spiral disk (e.g., Hatano et al. 1998; Lah et al. 2007; Holwerda 2008). For those SNIa found in massive spiral disks (likely the majority), the locally derived prior would be applicable out to  $z \sim 0.8$ .

New *Herschel* results suggest a strong evolution in the population of dusty galaxies (e.g., Dye et al. 2010; Clements et al. 2010). There are many more submillimeter luminous galaxies at higher redshift than there are today, a result of both enhanced dust production and higher irradiation due to star formation. The *Herschel* results show how the dusty ISM's illumination rapidly evolves with time. This paper, in contrast, focuses on the evolution of dusty ISM's morphology in massive spiral disks and finds little or no evidence for evolution since  $z = 0.7$ . Both dust illumination and geometry are key ingredients for models explaining the population of luminous infrared and submillimeter galaxies observed at high redshift.

Because we select galaxies that are expected to passively evolve into  $M^*$  galaxies (see Capak 2004; Sheth et al. 2008), these systems are the massive halos and disks expected to have collapse first. They have produced a large fraction of their stellar mass at the epoch of observation (Bell et al. 2003; Ilbert et al. 2010), and the mass surface density of all components combined (including dark matter, molecular, and atomic gas) is in a similar vertical balance with turbulence as it is today i.e., sufficient to collapse the ISM into a thin dust lane. Since the specific star formation is a factor three higher for the same stellar mass (Noeske et al. 2007a, 2007b), it implies that the total ISM surface density must be higher to compensate. The proportions of the ISM components depend on the local pressure (e.g., Obreschkow & Rawlings 2009a, 2009b) and we speculate that increase in ISM surface density and star formation feedback both point to a more important molecular component at this epoch.

## 8. CONCLUSIONS

By identifying dust lanes in highly inclined spiral disks of  $L_V^*$  galaxies in the SDSS and COSMOS surveys, we conclude the following.

1. Our estimate (80%) for the dust lane fraction in local galaxies, derived from SDSS-g images, is consistent with previous results from Dalcanton et al. (2004; Figure 2).
2. Any evolution in the dust lane fraction with redshift derived from COSMOS images cannot be caused by the effects of varying rest-frame wavelength or spatial resolution for galaxies at higher redshift (Figure 5). Taken in the same filter bandwidth, the redshifted SDSS and the COSMOS classifications are both consistent with a constant dust lane fraction of about 80% of galaxies since  $z \sim 0.8$  (Figure 6).

3. The majority of  $L_V^*$  galaxies in COSMOS (75% or more) display a dust lane over the last 7 Gyr. The observed fractions in COSMOS are consistent with a constant fraction of 80%, i.e., with no evolution since  $z = 0.7$ . At  $z = 0.8$ , close to the redshift limit of our survey, the dust lane fraction appears slightly lower, hinting at some evolution beyond  $z = 0.7$  (Figure 6).
4. Star-forming galaxies (SED type  $T_{\text{phot}} = 4-6$ ) seem to have a lower dust lane fraction ( $f \sim 50\%$ ) than more quiescent SED types ( $T_{\text{phot}} < 4$ ,  $f \sim 80\%$ ), consistent with the picture that a high specific star formation rate injects enough energy into the ISM disk that the additional turbulence prevents the vertical collapse of the dusty molecular ISM into a dust lane (Figure 7). However, we caution that due to the small number of star-forming galaxies, the associated error bars are rather large, so this result is somewhat tentative.
5. A small population of edge-on spirals with no reddening or dust lane is evident at higher redshift (Table 2, Figure 8). We speculate that their dust disks do not extend far enough into the spiral disk to project a dust lane.
6. At the highest redshift ( $z \sim 0.8$ ), the lower mass galaxies ( $\log(M/M^*) < 0.1$ ) show a slightly higher fraction of dust lanes than the higher mass galaxies ( $\log(M/M^*) > 0.1$ , Figure 9). This may be due to evolution, a change in environment, or a higher contribution of starbursting galaxies at higher redshift to the massive galaxy population.
7. Many of the  $L_V^*$  disks have already accumulated enough surface density 7 Gyr ago in all components combined to vertically collapse the cold, dusty ISM into a thin lane. This implies that SED or SNIa host galaxy models using this geometry based on local results are applicable to higher redshift ( $z < 0.8$ ).

Future work on the fraction of dust lanes in edge-on spiral disks will be possible with the CANDELS survey which will provide three color images of five fields. The near-infrared imaging with *HST* allows us to probe further along the mass range, possibly down to the mass where dust lanes disappear in these distant galaxies. In the Sloan Digital Survey, we hope to use the classification by the GalaxyZoo2 volunteers to improve on the results of D04, Obrić et al. (2006), and this paper for the local universe. Lastly, edge-on galaxies can be observed with the Atacama Large Millimeter Array to probe both the dynamics and the width of the molecular phase in spirals.

The authors thank the anonymous referee, whose comments led to a substantially improved manuscript, and K. Sheth for the useful discussions in framing the samples. We acknowledge support from HST AR grant GO-1274. Funding for the SDSS and SDSS-II has been provided by the Alfred P. Sloan Foundation, the Participating Institutions, the National Science Foundation, the U.S. Department of Energy, the National Aeronautics and Space Administration, the Japanese Monbukagakusho, the Max Planck Society, and the Higher Education Funding Council for England. The SDSS Web Site is <http://www.sdss.org/>. The SDSS is managed by the Astrophysical Research Consortium for the Participating Institutions. The Participating Institutions are the American Museum of Natural History, Astrophysical Institute Potsdam, University of Basel, the University of Cambridge, Case Western Reserve University, the University of Chicago, Drexel University, Fermilab, the Institute for Advanced Study, the Japan Participation Group, Johns Hopkins University, the Joint Institute for Nuclear Astrophysics, the Kavli Institute

for Particle Astrophysics and Cosmology, the Korean Scientist Group, the Chinese Academy of Sciences (LAMOST), Los Alamos National Laboratory, the Max-Planck-Institute for Astronomy (MPIA), the Max-Planck-Institute for Astrophysics (MPA), New Mexico State University, The Ohio State University, the University of Pittsburgh, the University of Portsmouth, Princeton University, the United States Naval Observatory, and the University of Washington. This research has made use of the NASA/IPAC Infrared Science Archive, which is operated by the Jet Propulsion Laboratory, California Institute of Technology, under contract with the National Aeronautics and Space Administration. This research has made use of the NASA/IPAC Extragalactic Database (NED) which is operated by the Jet Propulsion Laboratory, California Institute of Technology, under contract with the National Aeronautics and Space Administration. This research has made use of NASA's Astrophysics Data System.

## REFERENCES

- Abazajian, K. N., Adelman-McCarthy, J. K., Agüeros, M. A., et al. 2009, *ApJS*, **182**, 543
- Allen, P. D., Driver, S. P., Graham, A. W., et al. 2006, *MNRAS*, **371**, 2
- Allen, R. J., Atherton, P. D., & Tilanus, R. P. J. 1986, *Nature*, **319**, 296
- Azzollini, R., Trujillo, I., & Beckman, J. E. 2008, *ApJ*, **684**, 1026
- Baes, M., Davies, J. I., Dejonghe, H., et al. 2003, *MNRAS*, **343**, 1081
- Baes, M., Fritz, J., Gadotti, D. A., et al. 2010, *A&A*, **518**, L39
- Barazza, F. D., Jogee, S., & Marinova, I. 2008, in ASP Conf. Ser. 396, Formation and Evolution of Galaxy Disks, ed. J. G. Funes & E. M. Corsini (San Francisco, CA: ASP), 351
- Barden, M., Rix, H.-W., Somerville, R. S., et al. 2005, *ApJ*, **635**, 959
- Bell, E. F., Baugh, C. M., Cole, S., Frenk, C. S., & Lacey, C. G. 2003, *MNRAS*, **343**, 367
- Bertin, E., & Arnouts, S. 1996, *A&AS*, **117**, 393
- Bianchi, S. 2007, *A&A*, **471**, 765
- Bianchi, S. 2008, *A&A*, **490**, 461
- Bianchi, S., Davies, J. I., & Alton, P. B. 2000, *A&A*, **359**, 65
- Bianchi, S., & Xilouris, E. M. 2011, *A&A*, **531**, L11
- Bournaud, F., Elmgreen, B. G., & Martig, M. 2009, *ApJ*, **707**, L1
- Cameron, E., & Driver, S. P. 2007, *MNRAS*, **377**, 523
- Capak, P., Aussel, H., Ajiki, M., et al. 2008, VizieR Online Data Catalog, **217**, 20099
- Capak, P. L. 2004, PhD thesis, Univ. Hawai'i
- Cazaux, S., & Tielens, A. G. G. M. 2004, *ApJ*, **604**, 222
- Clements, D. L., Rigby, E., Maddox, S., et al. 2010, *A&A*, **518**, L8
- Coleman, G. D., Wu, C.-C., & Weedman, D. W. 1980, *ApJS*, **43**, 393
- Dalcanton, J. J., Yoachim, P., & Bernstein, R. A. 2004, *ApJ*, **608**, 189
- Desai, V., Dalcanton, J. J., Aragón-Salamanca, A., et al. 2007, *ApJ*, **660**, 1151
- Dye, S., Dunne, L., Eales, S., et al. 2010, *A&A*, **518**, L10
- Fukugita, M., Ichikawa, T., Gunn, J. E., et al. 1996, *AJ*, **111**, 1748
- Gehrels, N. 1986, *ApJ*, **303**, 336
- Giavalisco, M., Livio, M., Bohlin, R. C., et al. 1996, *AJ*, **112**, 369
- Gordon, K. D., Misselt, K. A., Witt, A. N., & Clayton, G. C. 2001, *ApJ*, **551**, 269
- Grogin, N. A., Kocevski, D. D., Faber, S. M., et al. 2011, *ApJS*, **197**, 35
- Hatano, K., Branch, D., & Deaton, J. 1998, *ApJ*, **502**, 177
- Holwerda, B. W. 2005, arXiv:astro-ph/0512139
- Holwerda, B. W. 2008, *MNRAS*, **386**, 475
- Holwerda, B. W., Bianchi, S., Baes, M., et al. 2012b, in Proc. of IAU 284, "The Spectral Energy Distribution of Galaxies," (SED2011), 5–9 September 2011, ed. R. J. Tuffs & C. C. Popescu (Preston, UK)
- Holwerda, B. W., Bianchi, S., Böker, T., et al. 2012a, *A&A*, **541**, L5
- Hopkins, P. F., Hernquist, L., Cox, T. J., Dutta, S. N., Rothberg, B., et al. 2008, *ApJ*, **679**, 156
- Howk, J. C. 2005, in ASP Conf. Ser. 331, Extra-Planar Gas, ed. R. Braun (San Francisco, CA: ASP), 287
- Howk, J. C., & Savage, B. D. 2000, *AJ*, **119**, 644
- Ilbert, O., Salvato, M., Le Floch, E., et al. 2010, *ApJ*, **709**, 644
- Jogee, S., Barazza, F. D., Rix, H.-W., et al. 2004, *ApJ*, **615**, L105
- Jonsson, P., Groves, B. A., & Cox, T. J. 2010, *MNRAS*, **403**, 17
- Kamphuis, P., Holwerda, B. W., Allen, R. J., Peletier, R. F., & van der Kruit, P. C. 2007, *A&A*, **471**, L1
- Kanwar, A., Simard, L., Schade, D., & Gwyn, S. D. J. 2008, *ApJ*, **682**, 907
- Karachentsev, I. D., Karachentseva, V. E., & Parnovskij, S. L. 1993, *Astron. Nachr.*, **314**, 97
- Kautsch, S. J. 2009, *Astron. Nachr.*, **330**, 1053
- Kinney, A. L., Calzetti, D., Bohlin, R. C., et al. 1996, *ApJ*, **467**, 38
- Koekemoer, A. M., Faber, S. M., Ferguson, H. C., et al. 2011, *ApJS*, **197**, 36
- Lah, P., Chengalur, J. N., Briggs, F. H., et al. 2007, *MNRAS*, **376**, 1357
- Martig, M., Bournaud, F., Croton, D. J., Dekel, A., Teyssier, R., et al. 2012, arXiv:1201.1079
- Misselt, K. A., Gordon, K. D., Clayton, G. C., & Wolff, M. J. 2001, *ApJ*, **551**, 277
- Mobasher, B., Capak, P., Scoville, N. Z., et al. 2007, *ApJS*, **172**, 117
- Noeske, K. G., Faber, S. M., Weiner, B. J., et al. 2007a, *ApJ*, **660**, L47
- Noeske, K. G., Weiner, B. J., Faber, S. M., et al. 2007b, *ApJ*, **660**, L43
- Obreschkow, D., & Rawlings, S. 2009a, *MNRAS*, **400**, 665
- Obreschkow, D., & Rawlings, S. 2009b, *ApJ*, **696**, L129
- Obrić, M., West, A. A., & Dalcanton, J. 2006, *BAAS*, **38**, 1037
- Pannella, M., Gabasch, A., Goranova, Y., et al. 2009, *ApJ*, **701**, 787
- Pierini, D., Gordon, K. D., Witt, A. N., Madsen, G. J., et al. 2004, *ApJ*, **617**, 1022
- Planck Collaboration Ade, P. A. R., Aghanim, N., et al. 2011, *A&A*, **536**, A19
- Popescu, C. C., Misiriotis, A., Kylafis, N. D., Tuffs, R. J., & Fischera, J. 2000, *A&A*, **362**, 138
- Popescu, C. C., & Tuffs, R. J. 2005, in AIP Conf. Proc. 761, The Spectral Energy Distributions of Gas-Rich Galaxies: Confronting Models with Data, ed. C. C. Popescu & R. J. Tuffs (Melville, NY: AIP), 155
- Rand, R. J. 1995, *AJ*, **109**, 2444
- Ravindranath, S., Ferguson, H. C., Conselice, C., et al. 2004, *ApJ*, **604**, L9
- Scarlata, C., Carollo, C. M., Lilly, S., et al. 2007, *ApJS*, **172**, 406
- Schechtman-Rook, A., Bershady, M. A., & Wood, K. 2012a, *ApJ*, **746**, 70
- Schechtman-Rook, A., Bershady, M. A., Wood, K., & Robitaille, T. P. 2012b, in Proc. of IAU 284, "The Spectral Energy Distribution of Galaxies," (SED2011), 5–9 September 2011, ed. R. J. Tuffs & C. C. Popescu (Preston, UK)
- Scoville, N., Abraham, R. G., Aussel, H., et al. 2007a, *ApJS*, **172**, 38
- Scoville, N., Aussel, H., Brusa, M., et al. 2007b, *ApJS*, **172**, 1
- Seth, A. C., Dalcanton, J. J., & de Jong, R. S. 2005, *AJ*, **130**, 1574
- Sheth, K., Elmegreen, D. M., Elmegreen, B. G., et al. 2008, *ApJ*, **675**, 1141
- Simard, L. 1998, in ASP Conf. Ser. 145, Astronomical Data Analysis Software and Systems VII, ed. R. Albrecht, R. N. Hook, & H. A. Bushouse (San Francisco, CA: ASP), 108
- Sturm, E., González-Alfonso, E., Veilleux, S., et al. 2011, *ApJ*, **733**, L16
- Thompson, T. W. J., Howk, J. C., Savage, B. D., et al. 2004, *AJ*, **128**, 662
- Trujillo, I., & Aguerri, J. A. L. 2004, *MNRAS*, **355**, 82
- Trujillo, I., & Pohlen, M. 2005, *ApJ*, **630**, L17
- Vogel, S. N., Kulkarni, S. R., & Scoville, N. Z. 1988, *Nature*, **334**, 402
- Watson, L. C., Schinnerer, E., Martini, P., Böker, T., & Lisenfeld, U. 2011, *ApJS*, **194**, 36
- Weingartner, J. C., & Draine, B. T. 2001, *ApJ*, **553**, 581
- Xilouris, E. M., Byun, Y. I., Kylafis, N. D., Paleologou, E. V., & Papamastorakis, J. 1999, *A&A*, **344**, 868
- Yoachim, P., & Dalcanton, J. J. 2006, *AJ*, **131**, 226