

Effect of Denture-Related Stomatitis Fluconazole Treatment on Oral *Candida albicans* Susceptibility Profile and Genotypic Variability

Maria Helena Figueiral^{1,*}, Patrícia Fonseca¹, Maria Manuel Lopes², Eugénia Pinto³, Teresa Pereira-Leite⁴ and Benedita Sampaio-Maia^{1,5}

¹Faculty of Dentistry, Universidade do Porto, Portugal; ²Department of Microbiology, Faculty of Pharmacy, Lisbon University, Portugal; ³CEQUIMED/CIIMAR, Microbiology Service, Biological Sciences Department, Faculty of Pharmacy, Universidade do Porto, Portugal; ⁴USF-Alcaldes, Portugal; ⁵INEB/I3S - Instituto de Engenharia Biomédica, Instituto de Investigação e Inovação em Saúde, Universidade do Porto, Portugal

Abstract: Denture-related stomatitis (DRS) is the most common condition affecting removable-denture wearers, and *Candida albicans* the most frequent pathogenic agent. Systemic antifungal treatment is indicated but recurrences are frequent. The aim of this study was to characterize the oral load, fluconazole susceptibility profile and genotypic variability of oral *C. albicans* isolates from patients with DRS before (T0), immediately after fluconazole treatment (Tat) and after 6-months follow-up (T6m). Eighteen patients presenting DRS and treated with fluconazole were followed at the Faculty of Dentistry of Oporto University. Seventy *C. albicans* isolates were obtained and identified using standard cultural and biochemical multi-testing. Fluconazole susceptibility was tested by E-test[®]. Microsatellite-primed PCR was performed to assess the genotypic variability of *C. albicans* isolates. The patients' mean age was 58.0±3.2 years, and 55.6%/44.4% had total/partial dentures. Before treatment, 22.2%, 44.4% and 33.3% of the patients presented DRS type I, II or III, respectively. Fluconazole treatment healed or improved DRS in 77.8% of the patients, accompanied by an 83.5% reduction in oral *C. albicans* load. However, after 6-months, oral *C. albicans* load increased significantly and DRS severity was similar to the one observed before treatment. Moreover, the prevalence of patients presenting fluconazole resistant isolates of *C. albicans* increased significantly throughout the study: T0-5.6%, Tat-10.0% and T6m-42.9%. A change in the genotypic variability of *C. albicans* isolates was also verified, being mostly associated to fluconazole susceptibility profile change. In conclusion, fluconazole presents a good short-term DRS treatment efficiency, but may be associated to a long-term emergence of *C. albicans* fluconazole resistance.

Keywords: *Candida albicans*, denture, denture wearers, denture-related stomatitis, fluconazole resistance, genotypic variability.

INTRODUCTION

Denture-related stomatitis (DRS) is defined as an inflammatory process of the oral mucosa underlying a removable, partial or total, dental prosthesis. In patients with removable prostheses, the mean prevalence of DRS is 50% [1, 2]. Aetiological factors in DRS include the trauma caused by an ill-fitting denture, lack of oral and prosthesis hygiene and a favourable environment for the proliferation of microorganisms [3]. Although bacterial infection, mechanical irritation, and allergic reaction have been proposed as possible causes of DRS, infection with *Candida* species is often implicated [1, 2, 4].

Candida spp. are oral commensals present in up to 90% of healthy persons and *Candida albicans* (*C. albicans*) is the most frequent colonizer fungi [5-7]. Previous studies from our group showed that DRS is clearly associated with oral infection by yeasts, mainly *C. albicans* [1], although the same genotype may be found both in DRS patients and in

healthy controls [8]. Although DRS is not a particularly severe pathology, it may be a portal of entry for further infections mainly in susceptible patients [1, 2].

There is clear evidence that the management of *Candida*-associated denture stomatitis is complex due to its multifactorial aetiology [9-11]. Current treatment includes control of denture plaque, and, with patient compliance, some rest periods of denture wearing in addition to the use of antimicrobial agents [12, 13]. Topical antifungal drugs, such as nystatin, amphotericin B, and miconazole have proved to be effective in DRS improvement [14-16]. However, recurrence rates are high and treatment regimens tend to be extended [17, 18]. The systemic triazoles, such as fluconazole, are currently the first therapeutic choice for the treatment of this infection [19, 20], although progressive recolonization of the palate and the denture fitting surface by yeast, together with a high rate of clinical relapse and recurrence after therapy, have also been reported [14, 21]. So, the aim of this study was to characterize during a 6-months period the oral load, fluconazole susceptibility profile and genotypic variability of oral *C. albicans* isolates from DRS patients treated with fluconazole therapy.

*Address correspondence to this author at the Rua Dr. Manuel Pereira da Silva, 4200-393 Porto Portugal;
Tel: +351 220 901 100; Fax: +351 220 901 101;
E-mails: mhsilva@fmd.up.pt and hfigueiral@gmail.com

MATERIAL AND METHODS

Study Design and Patient Selection

Twenty-one patients wearing polymethylmethacrylate maxillary removable prosthesis, with clinical diagnosis of DRS, followed at the outpatient clinic of the Faculty of Dentistry of Oporto University were randomly selected. Patients were assessed clinically and saliva samples were collected for microbiological analysis at the first clinical evaluation and diagnosis (T0), after fluconazole treatment (Tat) and after a 6-month follow-up period (T6m). Fluconazole was prescribed systemically (Fluconazol 50mg, Diflucan® Pfizer) for 15 days to all patients. After this period, systemic fluconazole was prescribed for further 15 days only to patients who did not improve clinically from DRS.

Ethics Committee of the Faculty of Dentistry of Oporto University reviewed and approved this study. All participants were recruited voluntarily after receiving detailed information on the study protocol. Free and written informed consent was obtained from all participants, according to the Helsinki Declaration.

Clinical Oral Evaluation

To identify and characterize the different DRS presentations, the Newton classification was used: DRS type I (localized inflammation or hyperaemia points), DRS type II (diffuse erythema) and DRS type III (palate papillary hyperplasia) [22].

Denture hygiene was assessed by modification of the Tarbet index [1, 4, 23]. The patients were classified according to the total denture surface covered with microbial plaque evaluated by a dental plaque disclosing solution (Dento-plaque®, Pierre-Fabre Dermo-Cosmetique) in the following groups: poor denture hygiene, >76%; insufficient denture hygiene, 26 to 75%, and good denture hygiene, <25%.

Additionally, before the oral clinical evaluation, unstimulated whole saliva was collected in a sterile container at least 2h after eating, tooth brushing, mouth washing or smoking.

Candida albicans Isolation and Quantification

Saliva samples from all patients were serially diluted with 0.9% sterile NaCl solution until 10^{-1} and immediately plated in triplicate in a selective and differential culture medium, CHROMagar Candida™ (Becton Dickinson, Sparks, USA). Afterwards, plates were incubated aerobically for 48h at 37°C. The total number of green-pigmented colonies (*Candida albicans*) were counted and isolated. The lower limit of detection was 1CFU/mL. *C. albicans* isolates were identified based on germ-tube formation, chlamydospore production and carbohydrate assimilation using the ID 32C system (BioMerieux, Marcy l'Etoile, France). The yeasts identified as *C. albicans* were also screened for their ability to grow on Sabouraud dextrose agar at 45°C for 48h and xylose assimilation, to distinguish from *C. dubliniensis* [24]. Several colonies of each different phenotype were selected and kept frozen at -70°C, in sterile water with 30% glycerol. Prior to testing, the yeasts were subcultured in

Sabouraud dextrose agar (BioMerieux, Marcy l'Etoile, France) and incubated at 37°C for two days. A total of 70 *C. albicans* isolates were obtained at T0, Tat and T6m from all patients. *C. dubliniensis* FFUL 21 and *Candida albicans* ATCC 90028 were used as internal controls for the identification tests.

Antifungal Susceptibility Testing

Susceptibility testing to fluconazole was performed by Etest® (BioMerieux, Marcy l'Etoile, France), according to the manufacturer's instructions. *C. albicans* isolates were classified accordingly to the proposed *in vitro* breakpoints to fluconazole: susceptible, minimal inhibitory concentration (MIC) ≤8mg/L; susceptible-dose dependent (S-DD), MIC between 16 to 32mg/L; and resistant, MIC ≥64mg/L.

Microsatellite-Primed PCR

For microsatellite-primed PCR genomic DNA was extracted in accordance with Treco [25]. Nucleic acid purity and concentration were assessed by spectroscopy at 260 and 280nm. A single repeat sequence of the phage M13, 5'-GAG GGT GGC GGT TCT-3' was used in the microsatellite-primed PCR experiments, because the array of DNA fragments presented high intensity bands and identical patterns of DNA fragments were detected with replicate samples, showing to be the best primer tested [26]. Synthetic oligodeoxyribonucleotide molecules were prepared by Oligo-Express (Paris, France). Amplification reactions were performed in volumes of 50mL containing 25ng template DNA, 10mmol/L Tris-HCl (pH 8.3), 50mmol/L KCl, 4mmol/L MgCl₂, 200mmol/L of each dNTPs, 1 mmol/L of primer, and 2.5U Taq DNA polymerase. Except for dNTPs, obtained from Amersham Pharmacia Biotech (Uppsala, Sweden), all PCR reagents were purchased from Perkin Elmer Corp., Applied Biosystems (New Jersey, USA). The samples were amplified in a Biometra T1 thermocycler (Göttingen, Germany), and the thermal cycling parameters were an initial denaturation at 95°C for 3min, followed by 35 cycles of denaturation at 95°C for 45s, annealing at 46°C for 40s, and extension at 72°C for 30s with final extension at 72°C for 5 minutes. PCR products were analysed by electrophoresis with agarose gel stained with ethidium bromide. DNA Ladder and pBR322 DNA-BstNI digest (New England Biolabs, Beverly, Mass.) were used as molecular size standards. To ensure the reproducibility of the results, reference strains were systematically run as controls together with negative controls (no DNA). The profiles for each isolate were compared visually with identical band patterns deemed to represent the same genotype.

Statistical Analysis

The statistical analysis was performed using IBM® SPSS® version 19.0 (Statistical Package for Social Sciences). The categorical variables were described through absolute and relative frequencies (%) and analysed by Chi-square independence test. Continuous variables were described using mean ± standard error (SEM) and analysed by Anova followed by students' t-test. Statistical significance was assumed when the p values were less than 0.05.

RESULTS

The first clinical evaluation and diagnosis (T0) was performed to 21 patients presenting a mean age of 57.6 years with a standard error of 3.1 years; 28.6% were males and 71.4% were females. Three patients (14.3%) did not conclude the study due to different reasons – death, hospitalization and unknown whereabouts - and were excluded thus from the analysis. The characterization of the group of participants followed during the 6-month period is shown in Table 1 (n=18). All patients had dentures of polymethylmethacrylate resin. At the time of the first clinical evaluation most of the patients presented DRS type II and insufficient denture hygiene (Table 1).

Table 1. Characterization of patients with denture-related stomatitis (DRS) regarding age, denture type and denture hygiene at the time of first diagnosis (T0).

	DRS patients (n=18)
Age, years	58.0±3.2
Gender, male / female	33.3% / 66.6%
Total / partial denture	55.6% / 44.4%
DRS type I / II / III	22.2% / 44.4% / 33.3%
Poor / insufficient / good denture hygiene	16.7% / 66.7% / 16.7%

Values are mean±sem or prevalence (%).

After 15 days of fluconazole treatment, 55.6% of the patients healed or improved DRS (Table 2). The remaining 44.4% presented DRS type I or II, evenly. These patients were prescribed further 15 days of fluconazole treatment. Half of the patients with 30 days of fluconazole treatment healed or improved DRS. In total, fluconazole therapy healed or improved DRS in 77.8% of the patients, regardless of the duration of the treatment. After the fluconazole treatment, 38.9% of the patients presented no clinical evidence of DRS, 44.4% presented DRS type I, 16.7% presented DRS type II, and no patient presented DRS type III (Fig. 1). After the 6-months follow up period, the DRS worsened in most of the evaluated patients and DRS severity was similar to that observed before treatment (Fig. 1). The prevalence of DRS type changed significantly throughout the study (Fig. 1, p=0.001).

Table 2. Fluconazole response of the followed up patients.

Fluconazole treatment period	Healed	Improved	Not improved
15 days	27.8%	27.8%	44.4%*
Plus 15 days	11.1 %	11.1%	22.2%

*These patients did further 15 days of fluconazole therapy.

At T0, the oral *C. albicans* prevalence in the evaluated patients was 94.4% and the mean load was 139.9±27.9CFU/mL of saliva. Fluconazole treatment re-

duced oral *C. albicans* prevalence and load in saliva, but at T6m the *C. albicans* prevalence increased, as did the *C. albicans* load (Fig. 2). The oral *C. albicans* prevalence profile differed significantly throughout the study (p=0.015).

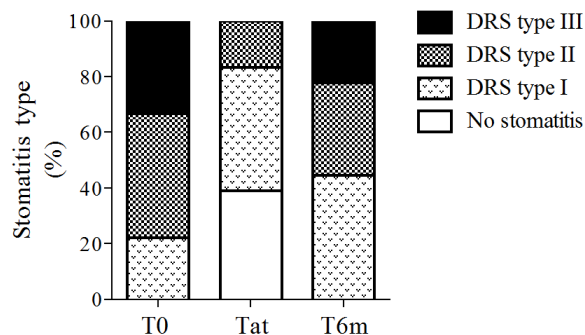


Fig. (1). Denture-related stomatitis (DRS) type at the time of stomatitis diagnosis (T0), after treatment (Tat) and 6-months after diagnosis (T6m). Bars represent prevalence.

At T0, the fluconazole susceptible dose-dependent and resistant isolates of *C. albicans* represented 5.6% each, whereas the susceptible isolates represented 88.9% (Fig. 3). After the 6-month follow-up period the *C. albicans* resistant isolates represented 42.9%, whereas the susceptible isolates represented 57.1% (Fig. 3).

The analysis of genotypic variability of *C. albicans* isolates, using primer M13, generated profiles with 6 to 14 bands varying between 400 and 1,800bp. From all evaluated patients that presented *C. albicans* counts in more than in one evaluation point, 42.9% showed a change in genotypic variability of *C. albicans* isolates throughout the study. Two examples of *C. albicans* profile change from T0 to T6m are shown in Fig. (4). Patient 1 presents two different genetic profiles, whereas patient 2 presents 3 different *C. albicans* genetic profiles. Identical profiles were obtained for all replicate samples, confirming the high reproducibility of this method. From this group of patients presenting *C. albicans* genotypic variability of M13 primer throughout the study, 83.3% had at least one *C. albicans* isolate resistant to fluconazole.

DISCUSSION

The present work intended to evaluate the effect of fluconazole treatment on short-term and long-term clinical development of DRS and *C. albicans* oral colonization profile.

Several factors may contribute to the onset and worsening of DRS, namely poor denture hygiene, continuous wearing of removable dentures, accumulation of denture plaque, bacterial and yeast contamination of denture surface and mucosal trauma due to poor-fitting dentures. In the present study each patient was his own control, since patients were evaluated before and after fluconazole treatment. Changes were not observed throughout the study in denture substitution or adjustment, denture hygiene promotion and denture daily wearing period, factors that could influence DRS progression besides fluconazole therapy.

There is a large body of evidence indicating that *Candida* is able to adhere to acrylic resin dentures, namely to

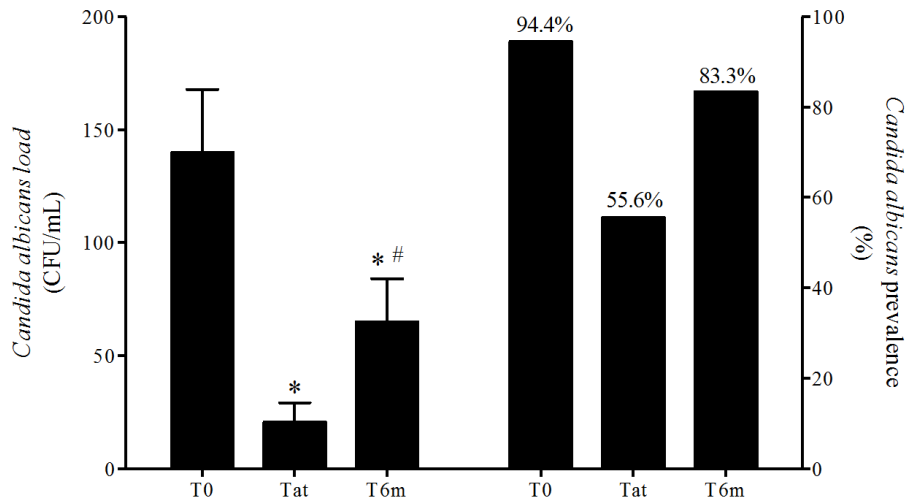


Fig. (2). Oral *Candida albicans* load and prevalence at the time of stomatitis diagnosis (T0), after treatment (Tat) and 6-months after diagnosis (T6m). Left bars represent means and error bars represent SD. *p* values were calculated using Anova ($p=0.00038$) followed by students' *t*-test. * $p<0.05$, significantly different from T0; # $p<0.05$, significantly different from Tat. Right bars represent prevalence.

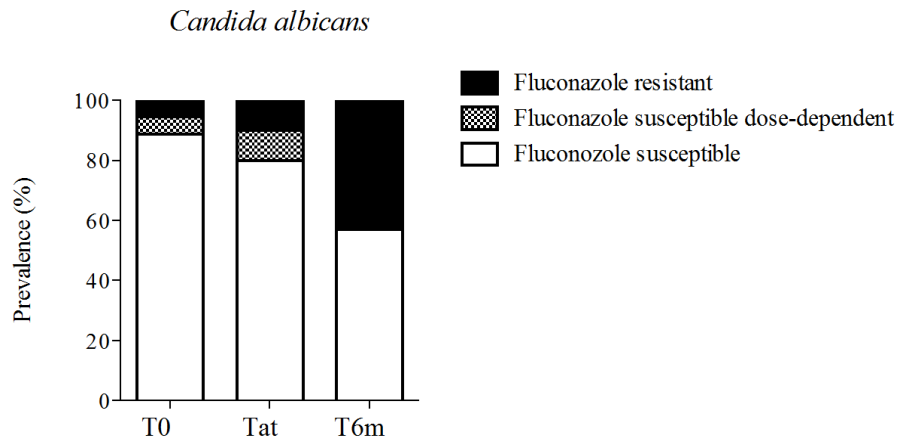


Fig. (3). Prevalence of fluconazole susceptibility profile of *Candida albicans* isolates at the time of stomatitis diagnosis (T0), after treatment (Tat) and 6-months after diagnosis (T6m). Bars represent prevalence.

polymethylmethacrylate – PMMA, forming a biofilm [27, 28]. As expected and in agreement with previous reports, denture wearer patients presented high rates of *C. albicans* oral colonization (94.4%) at the time of the first clinical evaluation (T0) [29-31]. This denture biofilm provides a source of microorganisms that is continuously exposed to the oral mucosa. This is the first step that may lead to the development of the infectious process and that may ultimately result in varying degrees of denture stomatitis of the adjacent mucosa [29, 32].

As expected, fluconazole treatment significantly reduced the oral *C. albicans* colonization and greatly improved the severity of DRS in the studied population [29, 33, 34]. However, these effects were observed only immediately after treatment (Tat). After the 6-month follow-up period (T6m), either oral *C. albicans* colonization or DRS severity profiles were similar to the ones observed before fluconazole treatment, revealing a good short-term but not a good long-term fluconazole DRS treatment efficiency. This fact probably reflects recontamination by residual yeasts that are present on the denture surfaces [29].

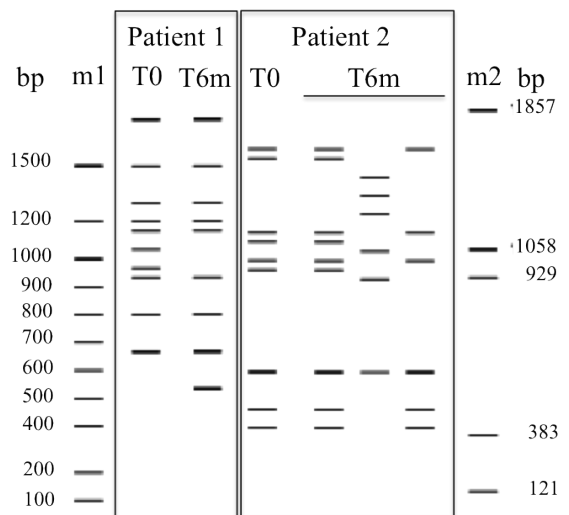


Fig. (4). Genotypic variability of *Candida albicans* isolates from two different patients studied by MSP-PCR with the primer M13 at the time of DRS diagnosis (T0), and 6-months after diagnosis (T6m). Molecular size markers used were DNA Ladder (m1) and pBR322 DNA-BstNI digest (m2).

Additionally, the *C. albicans* oral population appear to change over time due to the increase of *C. albicans* isolates resistant to fluconazole 6-months after therapy. This hypothesis was reinforced by the high rate of genetic variability found in *C. albicans* isolates within each patient when isolates collected before and 6-months after fluconazole treatment were compared. Notwithstanding, no specific *C. albicans* resistant genes were analysed, such as the efflux pumps [35]. Increasing scientific literature addresses this phenomenon of antimicrobial resistance induced by therapeutic treatment regarding non-oral infections [36]. In oral cavity, antimicrobial resistance is still scarce; however, dental medical doctors should be aware of its increasing importance and future implication. Despite the good short-term fluconazole efficiency in the treatment of DRS, the fluconazole-generalized prescription should be avoided to reduce the emergence of resistant strains of *C. albicans* and the increasing episodes of DRS recurrences. Therefore, other therapeutic or prevention strategies should be implemented before fluconazole is recommended, namely denture disinfection together with denture hygiene education and surveillance, denture adjustment or replacement [20]. In addition, new developments related to denture materials are focusing on means to reduce development of adherent biofilms. These developments may be valuable in reducing yeast colonization, and could lead to reductions in denture stomatitis with appropriate denture hygiene [29, 37].

Nevertheless, some clinical scenarios may require fluconazole use, namely in DRS in immunosuppressed patients at a risk of a systemic infection or patients with persistent severe symptomatologic DRS [20].

CONCLUSION

In conclusion, fluconazole presents a good short-term, but not a good long-term, DRS treatment efficiency. Also fluconazole treatment of DRS may be associated to a long-term emergence of oral *C. albicans* fluconazole resistance. Other therapeutic or prevention strategies should be implemented before fluconazole is prescribed, namely denture disinfection, together with denture hygiene education and surveillance, as well as denture adjustment or replacement.

CONFLICT OF INTEREST

The authors confirm that this article content has no conflict of interest.

ACKNOWLEDGEMENTS

Declared none.

REFERENCES

- [1] Figueiral MH, Azul A, Pinto E, Fonseca PA, Branco FM, Scully C. Denture-related stomatitis: Identification of aetiological and predisposing factors - a large cohort. *J Oral Rehabil* 2007; 34: 448-55.
- [2] Pinto E, Ribeiro IC, Ferreira NJ, Fortes CE, Fonseca PA, Figueiral MH. Correlation between enzyme production, germ tube formation and susceptibility to fluconazole in *Candida* species isolated from patients with denture-related stomatitis and control individuals. *J Oral Pathol Med* 2008; 37: 587-92.
- [3] Zissis A, Yannikakis S, Harrison A. Comparison of denture stomatitis prevalence in 2 population groups. *Int J Prosthodont* 2006; 19: 621-5.
- [4] Figueiral MH. Estomatite Protética: Identificação e caracterização dos factores etiológicos e predisponentes. PhD dissertation. Faculty of Dental Medicine: University of Porto 2000 [in Portuguese].
- [5] Ghannoum MA, Jurevic RJ, Mukherjee PK, et al. Characterization of the oral fungal microbiome (mycobiome) in healthy individuals. *PLoS Pathog* 2010; 6: e1000713.
- [6] Monteiro-da-Silva F, Araujo R, Sampaio-Maia B. Interindividual variability and intraindividual stability of oral fungal microbiota over time. *Med Mycol* 2014; 52: 498-505.
- [7] Monteiro-da-Silva F, Sampaio-Maia B, Pereira Mde L, Araujo R. Characterization of the oral fungal microbiota in smokers and non-smokers. *Eur J Oral Sci* 2013; 121: 132-5.
- [8] Costa F, Manaia CM, Figueiral MH, Pinto E. Genotypic analysis of *Candida albicans* isolates obtained from removable prosthesis wearers. *Lett Appl Microbiol* 2008; 46: 445-9.
- [9] Darwazeh AM, Al-Refai S, Al-Mojaiwel S. Isolation of *Candida* species from the oral cavity and fingertips of complete denture wearers. *J Prosthet Dent* 2001; 86: 420-3.
- [10] Sampaio-Maia B, Figueiral MH, Sousa-Rodrigues P, Fernandes MH, Scully C. The effect of denture adhesives on *Candida albicans* growth *in vitro*. *Gerodontology* 2012; 29: e348-56.
- [11] Webb BC, Thomas CJ, Willcox MD, Harty DW, Knox KW. *Candida*-associated denture stomatitis. Aetiology and management: A review. Part 3. Treatment of oral candidosis. *Aust Dent J* 1998; 43: 244-9.
- [12] Iacopino AM, Wathen WF. Oral candidal infection and denture stomatitis: A comprehensive review. *J Am Dent Assoc* 1992; 123: 46-51.
- [13] Shay K, Truhlar MR, Renner RP. Oropharyngeal candidosis in the older patient. *J Am Geriatr Soc* 1997; 45: 863-70.
- [14] Bissell V, Felix DH, Wray D. Comparative trial of fluconazole and amphotericin in the treatment of denture stomatitis. *Oral Surg Oral Med Oral Pathol* 1993; 76: 35-9.
- [15] Dorocka-Bobkowska B, Konopka K. Susceptibility of *Candida* isolates from denture-related stomatitis to antifungal agents *in vitro*. *Int J Prosthodont* 2007; 20: 504-6.
- [16] Martinez-Beneyto Y, Lopez-Jornet P, Velandrino-Nicolas A, Jornet-Garcia V. Use of antifungal agents for oral candidiasis: Results of a national survey. *Int J Dent Hyg* 2010; 8: 47-52.
- [17] Cross LJ, Williams DW, Sweeney CP, Jackson MS, Lewis MA, Bagg J. Evaluation of the recurrence of denture stomatitis and *Candida* colonization in a small group of patients who received itraconazole. *Oral Surg Oral Med Oral Pathol Oral Radiol Endod* 2004; 97: 351-8.
- [18] Ramage G, Tomsett K, Wickes BL, Lopez-Ribot JL, Redding SW. Denture stomatitis: A role for *Candida* biofilms. *Oral Surg Oral Med Oral Pathol Oral Radiol Endod* 2004; 98: 53-9.
- [19] Martin-Mazuelos E, Aller AI, Romero MJ, et al. Response to Fluconazole and itraconazole of *Candida* spp. in denture stomatitis. *Mycoses* 1997; 40: 283-9.
- [20] Pappas PG, Kauffman CA, Andes D, et al. Clinical practice guidelines for the management of candidiasis: 2009 update by the Infectious Diseases Society of America. *Clin Infect Dis* 2009; 48: 503-35.
- [21] Karyotakis NC, Anaissie EL. The new antifungal azoles: Fluconazole and itraconazole. *Curr Opin Infect Dis* 1994; 7: 658-66.
- [22] Budtz-Jorgensen E, Bertram U. Denture stomatitis. I. The etiology in relation to trauma and infection. *Acta Odontol Scand* 1970; 28: 71-92.
- [23] Tarbet WJ. Denture plaque: Quiet destroyer. *J Prosthet Dent* 1982; 48: 647-52.
- [24] Gales AC, Pfaller MA, Houston AK, et al. Identification of *Candida dubliniensis* based on temperature and utilization of xylose and alpha-methyl-D-glucoside as determined with the API 20C AUX and vitek YBC systems. *J Clin Microbiol* 1999; 37: 3804-8.
- [25] Treco DA. Preparation of yeast DNA, RNA and proteins. In: Ausebel FM, Brent R, Kingston RE, et al., Eds. *Current Protocols in Molecular Biology*. USA: Wiley and Sons 1989.
- [26] Bartie KL, Williams DW, Wilson MJ, Potts AJ, Lewis MA. PCR fingerprinting of *Candida albicans* associated with chronic

- hyperplastic candidosis and other oral conditions. *J Clin Microbiol* 2001; 39: 4066-75.
- [27] Chandra J, Mukherjee PK, Leidich SD, *et al.* Antifungal resistance of candidal biofilms formed on denture acrylic *in vitro*. *J Dent Res* 2001; 80: 903-8.
- [28] Pereira-Cenci T, Del Bel Cury AA, Crielaard W, Ten Cate JM. Development of Candida-associated denture stomatitis: New insights. *J Appl Oral Sci* 2008; 16: 86-94.
- [29] Gendreau L, Loewy ZG. Epidemiology and etiology of denture stomatitis. *J Prosthodont* 2011; 20: 251-60.
- [30] Radford DR, Challacombe SJ, Walter JD. Denture plaque and adherence of *Candida albicans* to denture-base materials *in vivo* and *in vitro*. *Crit Rev Oral Biol Med* 1999; 10: 99-116.
- [31] Vanden Abbeele A, de Meel H, Ahariz M, Perraudin JP, Beyer I, Courtois P. Denture contamination by yeasts in the elderly. *Gerodontology* 2008; 25: 222-8.
- [32] Caldas IM, Grams AC, Afonso A, Magalhaes T. Oral injuries in victims involving intimate partner violence. *Forensic Sci Int* 2012; 221: 102-5.
- [33] Kabir MA, Ahmad Z. Candida infections and their prevention. *ISRN Preventive Med* 2013; 2013: 763628.
- [34] Lombardi T, Budtz-Jorgensen E. Treatment of denture-induced stomatitis: A review. *Eur J Prosthodont Restor Dent* 1993; 2: 17-22.
- [35] Morschhauser J. Regulation of multidrug resistance in pathogenic fungi. *Fungal Genet Biol* 2010; 47: 94-106.
- [36] Shorr AF, Chung K, Jackson WL, Waterman PE, Kollef MH. Fluconazole prophylaxis in critically ill surgical patients: A meta-analysis. *Crit Care Med* 2005; 33: 1928-35.
- [37] von Fraunhofer JA, Loewy ZG. Factors involved in microbial colonization of oral prostheses. *Gen Dent* 2009; 57: 136-43.

Received: November 08, 2014

Revised: December 15, 2014

Accepted: December 18, 2014

© Figueiral *et al.*; Licensee Bentham Open.

This is an open access article licensed under the terms of the Creative Commons Attribution Non-Commercial License (<http://creativecommons.org/licenses/by-nc/3.0/>) which permits unrestricted, non-commercial use, distribution and reproduction in any medium, provided the work is properly cited.