

See discussions, stats, and author profiles for this publication at: <https://www.researchgate.net/publication/320645502>

Single injection dual phase CBCT technique ameliorates results of trans-arterial chemoembolization for hepatocellular cancer

Article · October 2017

DOI: 10.21037/tgh.2017.10.03

CITATIONS

3

READS

41

7 authors, including:



Pierleone Lucatelli
Sapienza University of Rome

122 PUBLICATIONS 706 CITATIONS

[SEE PROFILE](#)



Renato Argiro
Policlinico Tor Vergata

23 PUBLICATIONS 67 CITATIONS

[SEE PROFILE](#)



Luca Saba
Università degli studi di Cagliari

478 PUBLICATIONS 3,357 CITATIONS

[SEE PROFILE](#)



Mario Bezzi
Sapienza University of Rome

87 PUBLICATIONS 2,076 CITATIONS

[SEE PROFILE](#)

Some of the authors of this publication are also working on these related projects:



Systemic Lupus Erythematosus Musculoskeletal Manifestation Study - SLEMMS [View project](#)



Metabolomics of neurodegenerative disorders [View project](#)

Single injection dual phase CBCT technique ameliorates results of trans-arterial chemoembolization for hepatocellular cancer

Pierleone Lucatelli¹, Renato Argirò², Stefano Bascetta¹, Luca Saba³, Carlo Catalano⁴, Mario Bezzi⁴, Giovanni Battista Levi Sandri^{5,6}

¹Vascular and Interventional Radiology Unit, University of Siena, Siena, Italy; ²Departement of Diagnostic and Interventional Radiology, University Campus Bio-Medico of Rome, Rome, Italy; ³Departement of Medical Imaging, Azienda Ospedaliera Universitaria of Cagliari, Polo Monserrato, Cagliari, Italy; ⁴Vascular and Interventional Radiology Unit, Sapienza University of Rome, Rome, Italy; ⁵Division of General Surgery and Liver Transplantation, S. Camillo Hospital, Rome, Italy; ⁶Departement of Surgical Sciences, PhD in “Advanced Surgical Technology”, Sapienza University of Rome, Rome, Italy

Contributions: (I) Conception and design: P Lucatelli, R Argirò, GB Levi Sandri; (II) Administrative support: S Bascetta; (III) provision of study materials or patients: P Lucatelli, R Argirò, L Saba, M Bezzi, C Catalano; (IV) Collection and assembly of data: P Lucatelli, R Argirò, S Bascetta; (V) Data analysis and interpretation: P Lucatelli, R Argirò; (VI) Manuscript writing: All authors; (VII) Final approval of manuscript: All authors.

Correspondence to: Pierleone Lucatelli, MD, PhD, EBIR. Vascular and Interventional Radiology Unit, University of Siena, Viale Mario Bracci 53, 53100, Siena, Italy. Email: pierleone.lucatelli@gmail.com.

Abstract: Cone-beam CT (CBCT) application to the field of trans-arterial chemoembolization has been recently the focus of several researches. This imaging modality is performed with a rotation of the C-arm around the patient, without needs of patient repositioning. Datasets are immediately processed, obtaining volumetric CT-like images with the possibility of post-processing and reconstruction of images. Dual phase CBCT recently introduced in clinical practice consists in a first arterial acquisition followed by a delayed acquisition corresponding to a venous phase. The introduction of this feature has overcome the limit of single-phase acquisitions, allowing lesions characterization. Moreover these recent advantages have several intra-procedural implications. Detailed technical and acquisition parameters will be widely exposed in this review with particular attention to: catheter positioning, acquisition delay, injection parameters, patient positioning and contrast dilution. Comparison with standard of practice second line imaging [multidetector computer tomography (MDCT) and MDCT/arteriography] demonstrate the capability of detecting occult nodules providing some clinical implications thus potentially identifying a sub set of patients with aggressive disease behaviour. Other intra-procedural advantages of dual phase CBCT usage consist in a better tumor feeder visualization, reduction of proper DSA and fluoroscopic time, suggestion the presence of an extrahepatic parasitic feeder thus resulting in a more accurate treatment. Finally, the volumetric intraprocedural evaluation of accumulation of embolic agent has proved to be correlate with treatment response if compared with MRI.

Keywords: Cone-beam CT (CBCT); dual phase CBCT (DPCBCT); rotational angiography; TACE; DEB-TACE; multidetector computer tomography (MDCT); hepatocellular carcinoma (HCC)

Received: 30 September 2017; Accepted: 17 October 2017; Published: 24 October 2017.

doi: 10.21037/tgh.2017.10.03

View this article at: <http://dx.doi.org/10.21037/tgh.2017.10.03>

Introduction

According to international guidelines catheter based treatment represent the standard of care for both intermediate and advanced hepatocellular carcinoma (HCC) (1). Different aim could be pursued with transarterial therapies: intermediate stage benefits of local tumor debulking in order to keep patient within an active list for orthotopic liver transplantation (bridging to transplantation); whereas when dealing with advanced stage HCC, catheter based approach could in selected cases downstage total tumor burden in order to perform potential curative approach (major resection) (2-4).

Cone-beam CT (CBCT) is a volumetric imaging modality, provided by all different Angio Suite manufacturer, obtained by a single rotation of the C-arm flat panel detector around the patient. The acquisition is performed directly on the Angio Suite table, without need of patient repositioning, with or without contrast media administration. Immediate processing of acquired dataset lead to visualization, on dedicated workstation, of CT-like images, that ensure perfect cross-sectional comparison with standard contrast enhanced multidetector computer tomography (MDCT) or MRI on which all procedures are nowadays planned. Since its first usage within the neuro-interventional field (5,6), growing evidence of its adjunctive diagnostic value was reported even for peripheral applications: to assist below the knee revascularization procedures (7); as guidance for combined hybrid procedure (embolization + percutaneous ablation) for single or multiple lesions (8); to intraprocedural aid detection and correction of type Ia endoleak after EVAR procedures (9); to assist portal vein embolization procedures (10).

The application of this newly introduced imaging technique to the field of liver transcatheter oncological treatments, has significantly changed everyday practice. In fact, by aiding detection of the vasculature path to be catheterized to perform the embolization (detection of intrahepatic feeder) (11-13), by demonstrating the presence of extra hepatic feeders (14) as well as the presence of occult nodules missed at standard second line imaging had dramatically improved the outcome of treatment (15). Moreover, the routinely usage of this imaging modality, permits reduction of the total radiation dose for both operator and patient and reduction of the total amount of contrast media administered (16).

The aim of this review is to present all clinical and procedural advantages of the introduction of CBCT

technique as guidance for all liver oncological catheter based procedures.

CBCT technique

CBCT imaging can be performed only with new generation flat panel angiographers featuring dedicated imaging reconstruction software, as provided by different manufacturers (DynaCT, Siemens; XperCT, Philips; Innova CT, GE Healthcare). The acquisition is performed, without need of patient repositioning, either before or after the embolization procedure. In a single orbit the C-arm rotates 178–220° around the patient, with acquisition times ranging between 5 and 20 seconds, acquiring images every 0.39–0.52° with a pitch of 200–800 micron at 15–60 frame/second. The acquired rotational angiography displayed on the conventional monitor is immediately processed in order to create volumetric CT datasets (images range 24–35 cm, matrix size 512 cm × 512 cm × 387 cm, for a total amount of images around 400–420, with a matrix and isotropic resolution of 0.49 mm with a FOV ranging between 12–40 cm). The high resolution of these images permits 3D reconstructions (including multiplanar reformations, maximum intensity projections and volume rendering images). The acquisition is performed with continuous modulation of the tube current, allowing for estimated dose around 3–10 mSv for a single CBCT.

The major advantages of this technique derive from its ability to combine contrast media injection with three-dimensional CT-like images, overcoming the classical limit of bi-dimensional proper digital subtraction angiography (DSA) acquisition. The contrast media intra-arterial injection maximizes the discrepancy measured in term of contrast to noise ratio (CNR) and signal to noise ratio (SNR) between the healthy liver and HCC nodules. In detail first proper DSA acquisitions (posteroanterior and right anterior oblique projections) are performed in order to verify the appropriate flow and volume of the power injector (e.g., small vasculature 2.7–3 mL/s, total volume 12 mL; hypertrophied vasculature 4 mL/s, total volume 20 mL); injection could be performed either with via the standard 4–5 Fr angiographic catheter positioned in the proper hepatic artery (suggested PSI limit 900), yielding to a complete liver parenchima enhancement, or via a superselective positioned microcatheter (suggested PSI limit 600) visualizing just the segment/lobe of interest. Once the velocity of injection is identified (based on DSA findings), single injection dual phase CBCT is performed by setting appropriate injection duration and acquisition delay, with diluted contrast media (ratio 1:3). In fact, the injection

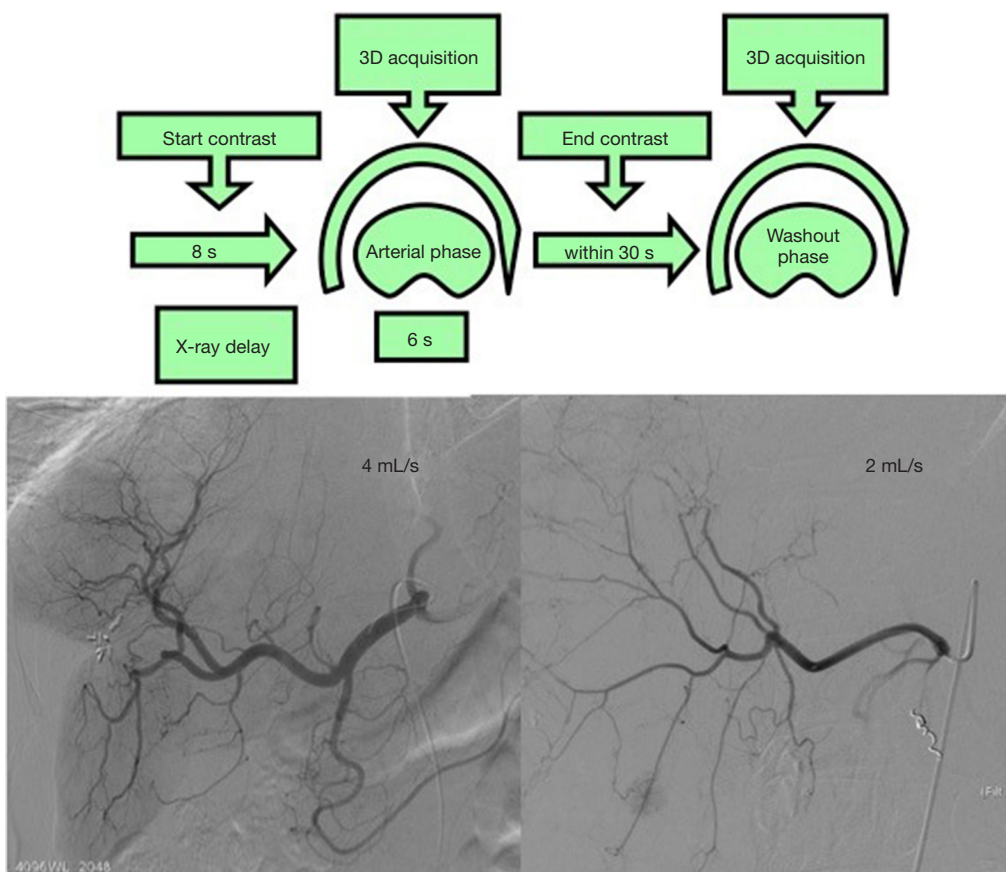


Figure 1 Summary of dual-phase CBCT technical detail with respect to acquisition optimal delay and selection of best power injector parameter obtained on the basis of standard DSA adjusted according to different liver vasculature dimension. CBCT, cone-beam CT; DSA, digital subtraction angiography.

duration should cover the acquisition time (around 7 seconds of rotation) and the 8 seconds of delay needed to gain optimal liver parenchyma enhancement, yielding to total injection duration of 15 seconds. Delayed phase CBCT is acquired within 30 seconds from the first acquisition. By employing these technical specifications (duration of injection and delay of acquisition) first CBCT acquisition combine the liver vasculature visualization with appropriate parenchyma/nodule enhancement. The added value of the second CBCT acquisition is represented by the potentiality of characterizing lesion by depicting their behaviour (e.g., lesion’s washout). *Figure 1* summarizes the technical detail of the dual-phase technique.

Comparison with MDCT/MDCT arteriography

As compared to conventional MDCT acquisitions, CBCT

present some significant limitations in terms of image quality, mostly related to the increased photon scatter and increase image noise generated by the small FOV. Notwithstanding these limitations, recently published papers demonstrate that the clinical performance of CBCT (in terms of tumor identification, vessel delineation and soft tissue evaluation) isn’t significantly impaired as compared to that of conventional CT (*Figure 2*).

Regarding the major constrain of the limited FOV dimension, is worth to underline that most of patients usually fits even with this limited field of view. In several particular settings, such as hypertrophied left liver lobe, obese patients this could became a major limitation. In order to solve this technical drawback: “open arc cone-beam CT” has been recently reported, by modifying the axis of rotation of the c-arm around the patient in order to image all the live segments within a single acquisition (17).

Despite these over mentioned technical limits in clinical practice CBCT can permit to shows additional HCC if compared with MDCT; in fact, recent published paper reported higher sensitivity in detection of nodules. In particular Mayer *et al.* (18) demonstrated a specificity of 99% and of 85% in tumor detection despite the gold standard of reference is not clear being the standard of reference the blind reading of the pre-procedural MDCT; other authors demonstrate the superiority of CBCT in the detection accuracy of nodules smaller than 10 mm and the higher sensitivity in nodule smaller than 20 mm whereas no differences were observable in detection of nodules greater than 10 mm (19); although the paper of Higashihara *et al.* (20) demonstrate no significant differences between the mean PPV for MDCT and CBCT among <10 and >10 mm group despite the number of total HCC detected was greater in CBCT group; it's necessary to mention that in these last two paper the standard of reference was considered as the accumulation of lipiodol observable at CT imaging 1 week after the procedure.

To our knowledge to date there is only one paper focused on comparing CBCT with the hybrid CT/Angiography suite (21). The paper does not provide a comparison of clinical results but analyses advantages or disadvantages of every system. In particular, advantages provided by using CT instead of flat-panel C-arm regards the larger FOV with the certainty of includes the entire liver in the acquisition and the less evidence of motion or beam hardening artifacts; on the other hand, the patient radiation exposure is higher (22) and the cost of the system that is 1.5–2 times more expensive than CBCT. Despite these advantages of hybrid CT/angiography suite, this technology has not been widespread across countries, mainly due to the high equipment costs. For these reasons comparison between techniques is not possible. The other proposed technique, mainly reported by Asiatic literature (23–25), consist in a MDCT acquisition after having positioned one or two arterial catheters within the hepatic and superior mesenteric arteries, named MDCT-angiography. Despite the known advantages of higher image quality when utilizing the MDCT-angiography, these techniques need patient repositioning, higher radiation dose and finally did not permit any catheter repositioning. Moreover, in the reported series the total volume of contrast media administered throughout the examination in up to ten times more than then one suggested by our single injection dual phase imaging protocol.

Intraprocedural implications

The routine usage of CBCT during chemoembolization lead to several advantages: detection of occult nodules, better feeding vessels depiction, identification of extrahepatic parasitic feeder, sparing of non-target feeder, prediction of treatment outcome, reduction of both contrast media and radiation dose.

Regarding nodule detection, there's a wide evidence that CBCT in course of TACE has the ability to demonstrate nodules not visualized at pre-operative MDCT and at standard DSA. Small HCC detectability, at DSA, depends on the size of the tumor and of its vascularization; more in particular Miyayama *et al.* (26) demonstrated that the 95% of tumor <1.3 mm not detectable at angiography can be seen at CBCT and that the 82% of those “occult” nodules can be treated with embolization. Lucatelli *et al.* (15) demonstrated how CBCT was capable to depict an occult nodule rate of 11.5% not visualized at pre-procedural MDCT. The short interlapsed time between intraprocedural CBCT and pre-procedural MDCT underline the potentiality of this novel imaging modality in depicting an aggressive subset of patients that prompt strictly imaging surveillance, aggressive management, prioritization in those patient within an active list for transplantation.

Another pivotal point of strength of this technique relies in the ability of assist the embolization procedure identifying tumor feeding arteries as well as extrahepatic parasitic feeder presence (*Figure 3*). In fact has been reported that the number of feeders visualized is higher in CBCT that in arteriography alone; in particular Iwazawa *et al.* (27) reported a CBCT sensitivity, specificity and accuracy of 96.9%, 97.0% and 96.9% respectively, significant higher than those reported for angiography (77.2%, 73% and 74.5% respectively); other authors confirms these results reporting the number visualized of tumor feeders during CBCT and DSA that was 4 ± 1.7 and 3.3 ± 1.4 respectively with a significative statistical evidence between the two imaging techniques (28). Recently an “automated tumor feeder detector” has been developed and some authors (29) evaluate the technical performance of this software; in particular Iwazawa *et al.* (30) reported that the sensitivity of this software was significantly higher than the conventional assessment using DSA (87.7% *vs.* 71.8%, $P<0.001$); on the other hand, the software showed low capability to detect feeders smaller than 1 mm and feeders adjacent to prior lipiodol accumulation. Therefore, the authors

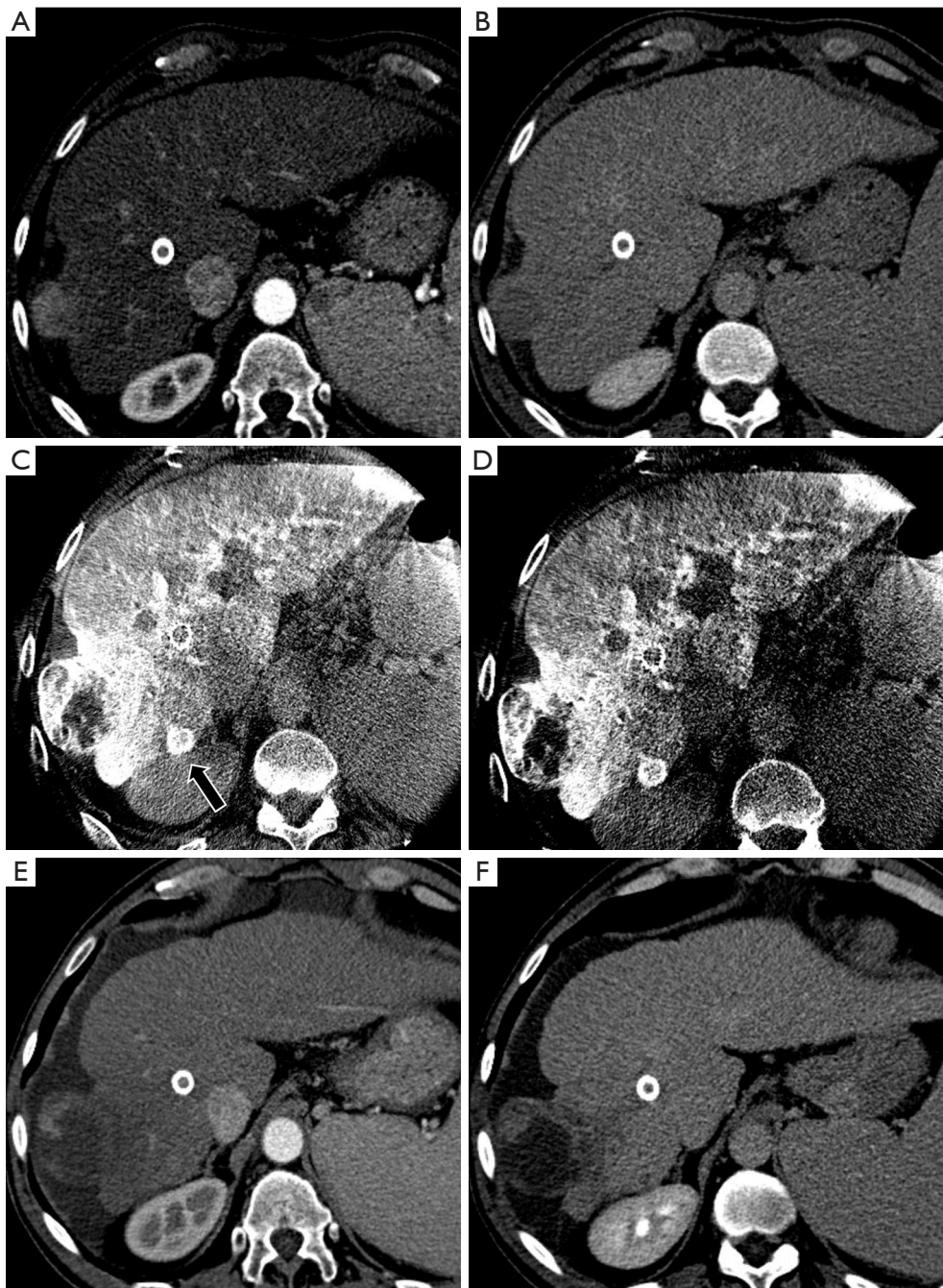


Figure 2 A case of an intraprocedural CBCT diagnosis of occult nodule in a patient with a S6 (40 mm) exophytic HCC. MDCT arterial (A) and delayed phase (B) shows the presence of the main nodule, with no satellite nodules. Intraprocedural CBCT arterial (C) and venous phases (D) demonstrate a satellite nodule (black arrow) with typical behaviour that was intra-procedurally treated. One-month MDCT demonstrate complete response (E,F). HCC, hepatocellular carcinoma; MDCT, multidetector computer tomography.

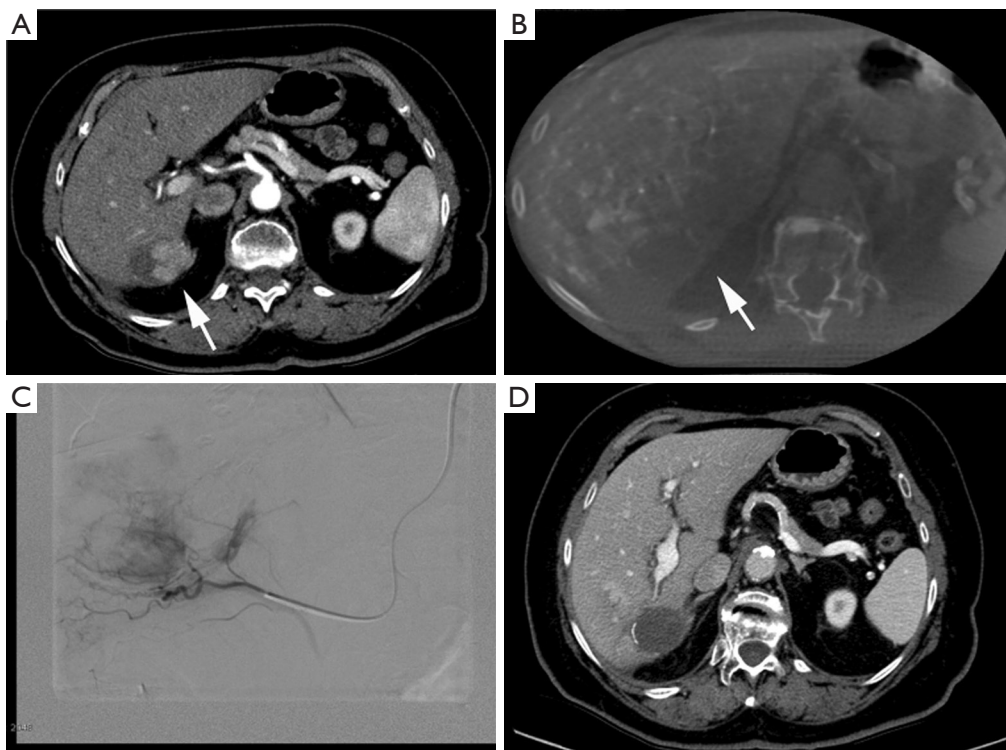


Figure 3 Clinical case of intra-procedural advantages of CBCT guidance. (A) Pre-procedural MDCT show residual vital tissue (white arrow) after two sessions of DEB-TACE procedures within the posterior wall of the lesion located within segment VI; (B) intra-procedural CBCT acquired by injecting within the proper hepatic artery show lack of enhancement of the residual vital tissue target of treatment (white arrow); (C) DSA of the right surreal artery that was demonstrated to feed the residual vital tissue; (D) 1-month follow-up MDCT show complete response, with no residual vital tissue.

conclude that the software has sufficient performance to identify tumor-feeders and can contribute to technical success in superselective procedure. Finally, Kinoshita *et al.* demonstrated how CBCT guidance aid to spare cystic artery when it fed the tumor (31).

Extrahepatic feeder presence could be supposed, especially in patients undergoing several catheters based treatment or with lesion located in certain liver areas (subcapsular, liver dome, gallbladder bed), in cases were CBCT had shown incomplete nodule enhancement (16).

Moreover, CBCT usage has been correlated with better procedural outcome: Wang *et al.* (32) demonstrated a strong correlation between lipiodol deposition on CBCT and tumor necrosis (cm³) assessed with enhanced MRI.

Lastly, the routine employment of this novel imaging modality by acquiring a CT-like 3D-volume, permitting multiplanar reconstruction, aid in the detection of the best projection to facilitate catheterization thus sparing fluoroscopy time as well as contrast media administration.

Conclusions

CBCT represent the novel standard of care of imaging guidance for catheter-based treatments. Its usage leads to several advantages over the pre-procedural MDCT. This technique is performed directly in the Angio Suite without patient repositioning. Thanks to these unique features it's able to ameliorate procedural results by depicting occult nodules, tumor feeding vessels (intra- and extra-hepatic), best projection to aid catheterization.

Acknowledgements

None.

Footnote

Conflicts of Interest: The authors have no conflicts of interest to declare.

References

- European Association For The Study Of The Liver; European Organisation For Research And Treatment Of Cancer. EASL-EORTC clinical practice guidelines: management of hepatocellular carcinoma. *J Hepatol* 2012;56:908-43.
- Levi Sandri GB, Ettorre GM, Colasanti M, et al. Hepatocellular carcinoma with macrovascular invasion treated with yttrium-90 radioembolization prior to transplantation. *Hepatobiliary Surg Nutr* 2017;6:44-8.
- Levi Sandri GB, Lai Q, Lucatelli P. The forgotten place of radioembolization for the treatment of hepatocellular carcinoma with portal vein tumour thrombosis. *Liver Int* 2017;37:469-70.
- Ettorre GM, Levi Sandri GB, Laurenzi A, et al. Yttrium-90 Radioembolization for Hepatocellular Carcinoma Prior to Liver Transplantation. *World J Surg* 2017;41:241-9.
- Hochmuth A, Spetzger U, Schumacher M. Comparison of three-dimensional rotational angiography with digital subtraction angiography in the assessment of ruptured cerebral aneurysms. *AJNR Am J Neuroradiol* 2002;23:1199-205.
- Missler U, Hundt C, Wiesmann M, et al. Three-dimensional reconstructed rotational digital subtraction angiography in planning treatment of intracranial aneurysms. *Eur Radiol* 2000;10:564-8.
- Jens S, Lucatelli P, Koelemay MJ, et al. Three-dimensional rotational angiography of the foot in critical limb ischemia: a new dimension in revascularization strategy. *Cardiovasc Intervent Radiol* 2013;36:797-802.
- Wang ZJ, Wang MQ, Duan F, et al. Clinical application of transcatheter arterial chemoembolization combined with synchronous C-arm cone-beam CT guided radiofrequency ablation in treatment of large hepatocellular carcinoma. *Asian Pac J Cancer Prev* 2013;14:1649-54.
- Biasi L, Ali T, Hinchliffe R, et al. Intraoperative DynaCT detection and immediate correction of a type Ia endoleak following endovascular repair of abdominal aortic aneurysm. *Cardiovasc Intervent Radiol* 2009;32:535-8.
- Kapoor BS, Esparaz A, Levitin A, et al. Nonvascular and portal vein applications of cone-beam computed tomography: current status. *Tech Vasc Interv Radiol* 2013;16:150-60.
- Minami Y, Yagyu Y, Murakami T, et al. Tracking Navigation Imaging of Transcatheter Arterial Chemoembolization for Hepatocellular Carcinoma Using Three-Dimensional Cone-Beam CT Angiography. *Liver Cancer* 2014;3:53-61.
- Lee IJ, Chung JW, Yin YH, et al. Cone-Beam Computed Tomography (CBCT) Hepatic Arteriography in Chemoembolization for Hepatocellular Carcinoma: Performance Depicting Tumors and Tumor Feeders. *Cardiovasc Intervent Radiol* 2015;38:1218-30.
- Deschamps F, Solomon SB, Thornton RH, et al. Computed analysis of three-dimensional cone-beam computed tomography angiography for determination of tumor-feeding vessels during chemoembolization of liver tumor: a pilot study. *Cardiovasc Intervent Radiol* 2010;33:1235-42.
- Miyayama S, Yamashiro M, Nagai K, et al. Efficacy of automated tumor-feeder detection software using cone-beam computed tomography technology in transarterial embolization through extrahepatic collateral vessels for malignant hepatic tumors. *Hepatol Res* 2016;46:166-73.
- Lucatelli P, Argiro R, Ginanni Corradini S, et al. Comparison of Image Quality and Diagnostic Performance of Cone-Beam CT during Drug-Eluting Embolic Transarterial Chemoembolization and Multidetector CT in the Detection of Hepatocellular Carcinoma. *J Vasc Interv Radiol* 2017;28:978-86.
- Lucatelli P, Corona M, Argiro R, et al. Impact of 3D Rotational Angiography on Liver Embolization Procedures: Review of Technique and Applications. *Cardiovasc Intervent Radiol* 2015;38:523-35.
- Scherthaner RE, Chapiro J, Sahu S, et al. Feasibility of a Modified Cone-Beam CT Rotation Trajectory to Improve Liver Periphery Visualization during Transarterial Chemoembolization. *Radiology* 2015;277:833-41.
- Meyer BC, Frericks BB, Voges M, et al. Visualization of hypervascular liver lesions During TACE: comparison of angiographic C-arm CT and MDCT. *AJR Am J Roentgenol* 2008;190:W263-9.
- Iwazawa J, Ohue S, Hashimoto N, et al. Detection of hepatocellular carcinoma: comparison of angiographic C-arm CT and MDCT. *AJR Am J Roentgenol* 2010;195:882-7.
- Higashihara H, Osuga K, Onishi H, et al. Diagnostic accuracy of C-arm CT during selective transcatheter angiography for hepatocellular carcinoma: comparison with intravenous contrast-enhanced, biphasic, dynamic MDCT. *Eur Radiol* 2012;22:872-9.
- Tanaka T, Arai Y, Inaba Y, et al. Current role of hybrid CT/angiography system compared with C-arm cone beam CT for interventional oncology. *Br J Radiol*

- 2014;87:20140126.
22. Bai M, Liu B, Mu H, et al. The comparison of radiation dose between C-arm flat-detector CT (DynaCT) and multi-slice CT (MSCT): a phantom study. *Eur J Radiol* 2012;81:3577-80.
 23. Ohki T, Tateishi R, Akahane M, et al. Characteristics of hepatocellular carcinoma nodules newly detected by computed tomography during arteriography and arterial portography: preliminary report of a randomized controlled trial. *Hepatol Int* 2012;6:639-45.
 24. Joshi JV, Pandey SN, Galvankar P, et al. Prevalence of premenstrual symptoms: Preliminary analysis and brief review of management strategies. *J Midlife Health* 2010;1:30-4.
 25. Kim SR, Ando K, Mita K, et al. Superiority of CT arteriportal angiography to contrast-enhanced CT and MRI in the diagnosis of hepatocellular carcinoma in nodules smaller than 2 cm. *Oncology* 2007;72 Suppl 1:58-66.
 26. Miyayama S, Yamashiro M, Okuda M, et al. Usefulness of cone-beam computed tomography during ultraslective transcatheter arterial chemoembolization for small hepatocellular carcinomas that cannot be demonstrated on angiography. *Cardiovasc Intervent Radiol* 2009;32:255-64.
 27. Iwazawa J, Ohue S, Mitani T, et al. Identifying feeding arteries during TACE of hepatic tumors: comparison of C-arm CT and digital subtraction angiography. *AJR Am J Roentgenol* 2009;192:1057-63.
 28. Meyer BC, Witschel M, Frericks BB, et al. The value of combined soft-tissue and vessel visualisation before transarterial chemoembolisation of the liver using C-arm computed tomography. *Eur Radiol* 2009;19:2302-9.
 29. Miyayama S, Yamashiro M, Ikuno M, et al. Ultraslective transcatheter arterial chemoembolization for small hepatocellular carcinoma guided by automated tumor-feeders detection software: technical success and short-term tumor response. *Abdom Imaging* 2014;39:645-56.
 30. Iwazawa J, Ohue S, Hashimoto N, et al. Clinical utility and limitations of tumor-feeder detection software for liver cancer embolization. *Eur J Radiol* 2013;82:1665-71.
 31. Kinoshita M, Takechi K, Iwamoto S, et al. The usefulness of cone-beam computed tomography during chemoembolization of hepatocellular carcinomas fed exclusively by the cystic artery. *Jpn J Radiol* 2016;34:747-53.
 32. Wang Z, Chen R, Duran R, et al. Intraprocedural 3D Quantification of Lipiodol Deposition on Cone-Beam CT Predicts Tumor Response After Transarterial Chemoembolization in Patients with Hepatocellular Carcinoma. *Cardiovasc Intervent Radiol* 2015;38:1548-56.

doi: 10.21037/tgh.2017.10.03

Cite this article as: Lucatelli P, Argirò R, Bascetta S, Saba L, Catalano C, Bezzi M, Levi Sandri GB. Single injection dual phase CBCT technique ameliorates results of transarterial chemoembolization for hepatocellular cancer. *Transl Gastroenterol Hepatol* 2017;2:83.