

Original papers

Performance characteristics of lipoprotein-associated phospholipase A2 activity assay on the Dimension Vista analyser and preliminary study of a healthy Italian population

Alessandro De Stefano, Liliana Mannucci*, Renato Massoud, Sergio Bernardini, Claudio Cortese

Department of Experimental Medicine and Surgery, University of Rome Tor Vergata, Rome, Italy

*Corresponding author: lilianamannucci@gmail.com

Abstract

Introduction: Lipoprotein-associated phospholipase A2 (Lp-PLA₂) is a marker of vascular inflammation associated with coronary heart disease and stroke. We evaluated analytical performance of the PLAC[®] Activity Test on Siemens Dimension Vista[®] 1500 analyzer and measured Lp-PLA₂ activity in Italian adults to establish reference intervals (RIs) and evaluate correlation with circulating lipids and age.

Materials and methods: The evaluation protocol consisted of precision, linearity, sensitivity, method comparison, substrate depletion ("hook") effect and interference assessment. Inhibitor (Darapladib) effect was also evaluated. Lp-PLA₂ activity was measured in 250 healthy donors (123 males, 127 females, aged 18-70 years). Central 95% RIs were established using nonparametric statistics.

Results: Intra-assay and inter-assay precision showed CVs of 0.6% - 1.4% and 0.9% - 2.0%, respectively. Linearity replicates showed $R^2 > 0.98$. Limit of quantitation was 5.8 U/L (CV = 9.4%). Bland Altman plot showed bias -0.9, 95% limits of agreement -6.5 - 4.72. Passing-Bablok regression showed excellent correlation (Slope = 1.02, 95% CI: 1.01 to 1.03; Intercept = -1.86, 95% CI: -3.08 to -1.26; $R^2 = 0.999$). No "hook effect" was observed at Lp-PLA₂ activities ≤ 1000 U/L. Average Lp-PLA₂ activity in 250 healthy donors was 182 ± 44 U/L (mean \pm SD). Males showed statistically significant higher activities than females ($P < 0.001$). RIs were 107 - 265 U/L for males and 84 - 225 U/L for females. Moderate significant correlation ($r = 0.29$, $P < 0.001$) was found between Lp-PLA₂ activity and total cholesterol.

Conclusions: The PLAC[®] Activity Test shows very good performance characteristics on Dimension Vista[®] 1500.

Key words: Lp-PLA₂; assay validation; cardiovascular disease; Darapladib; reference intervals

Received: May 2, 2017

Accepted: July 22, 2017

Introduction

Lipoprotein-associated phospholipase A2 (Lp-PLA₂), also known as platelet-activating factor acetyl-hydrolase, is a calcium-independent serine lipase which was initially identified by its hydrolysing action on the acetyl group at the sn-2 position of platelet-activating factor (1). It is now known that Lp-PLA₂ can hydrolyse a broad spectrum of substrates, including oxidized and polar phosphatidylcholines (2). Lp-PLA₂ is synthesized by macrophages and other inflammatory cells and circulates in human blood mainly bound to low-density lipoprotein (LDL) particles (80 - 85%) and, to a lesser extent, to high-density lipoprotein

(HDL) (3). Although it is considered an atheroprotective enzyme, the hydrolysis of oxidized phospholipids generates lysophospholipids, compounds that have a pro-inflammatory function (4). Several lines of evidence indicate that oxidized LDL play a critical role in atherogenesis and Lp-PLA₂ has been shown to be involved in the oxidative modification of LDL in the vascular wall by hydrolysing oxidized phospholipids, generating lysophosphatidylcholine and oxidized non-esterified fatty acids, which are strong pro-inflammatory mediators contributing to the formation of the atherosclerotic plaque (4-6). Lp-PLA₂ is a highly

<https://doi.org/10.11613/BM.2017.030701>

Biochem Med (Zagreb) 2017;27(3):030701

specific marker of vascular inflammation and its role in the development and progression of atherosclerosis has been suggested by various authors (6-8). High Lp-PLA₂ activity during atherosclerotic plaque formation and other inflammatory processes have been shown in several studies and there is increasing evidence that this enzyme is present within atherosclerotic lesions and enriched in vulnerable regions (6,8-11). Along with the well-known inflammatory marker high sensitivity C-reactive protein, Lp-PLA₂ has gained increasing significance and has been identified as an independent predictor of cardiovascular disease (CVD) in several studies, with elevated Lp-PLA₂ activities associated with an increased risk of CVD (7,8,12,13). Moreover, since half of first cardiovascular events occur in apparently healthy subjects showing normal lipid profiles, Lp-PLA₂ measurement can be of particular clinical relevance in primary prevention, as it could help identify patients with unrecognized cardiovascular risk when the evaluation of traditional risk markers is not sufficiently informative (8,14,15). A consensus panel issued in 2008 recommended testing Lp-PLA₂ not only as a diagnostic test for vascular inflammation but also in adjunct to traditional risk factor assessment in individuals with moderate or high risk of cardiovascular disease as defined by Framingham risk scores (16). This would allow improved identification of patients at high or very high CVD risk who would benefit from intensification of lipid-modifying therapy, and a lower LDL-cholesterol goal concentration is suggested when Lp-PLA₂ activities are high (17). Different assays for the measurement of Lp-PLA₂ activity in human plasma and serum have been developed but to date only the PLAC[®] Test for Lp-PLA₂ Activity Kit (diaDexus, Inc., San Francisco, USA) has received clearance by the Food and Drug Administration (FDA), in December of 2014.

In the present study we evaluated the analytical characteristics of the PLAC[®] Test on a Siemens Dimension Vista[®] 1500 analyzer (Siemens Healthcare Diagnostics Inc., Newark, USA), which is currently installed in our Core Clinical Chemistry Laboratory in an automated configuration. Since reference in-

tervals (RIs) for Lp-PLA₂ activity in the Italian population have not been reported yet, we analysed serum samples from a cohort of Italian healthy volunteers and evaluated the distribution of Lp-PLA₂ activity and the correlation of serum Lp-PLA₂ activity with circulating lipids and age.

Materials and methods

Subjects

For the reference population, serum samples were retrospectively selected from stored spare samples obtained from healthy volunteers, which were previously recruited at Tor Vergata University Hospital. We selected spare serum samples from 250 apparently healthy volunteers (123 males, 127 females), median age 37 (18 - 70) years. All subjects had undergone a visit consisting of a medical history, a physical examination, blood pressure measurement, and routine laboratory blood tests (clinical chemistry, haematology, coagulation), and had given informed consent for the collection, storage and/or reuse of blood samples. Exclusion criteria for our study were history and/or signs of CVD, any chronic disease or severe medical condition, alcohol and/or drug abuse, hypertension (systolic blood pressure ≥ 140 mm Hg and/or diastolic blood pressure ≥ 90 mmHg or under antihypertensive medication), total cholesterol > 5.2 mmol/L, triglycerides > 1.8 mmol/L, and use of lipid-lowering agents. Fasting blood samples had been collected into BD Vacutainer[®] SST[™] II Advance Plus serum separator tubes (Becton, Dickinson and Company, Franklin Lanes, USA) following standard procedures. Sample storage conditions were derived from previously published stability studies (18,19). Briefly, samples were selected on a daily basis after completion of routine laboratory assessments, which were performed within 1 - 2 hours of collection. Selected blood samples were anonymized and either stored at 4 °C and analysed for Lp-PLA₂ activity within 1 week or aliquoted and stored at - 70 °C for a maximum of 3 months and then analysed after a single freeze-thaw cycle.

Methods

Lp-PLA₂ enzyme activity

Lp-PLA₂ activity was determined on an open, user-defined channel on the Siemens Dimension Vista® 1500 automated chemical analyser (Siemens Healthcare Diagnostics Inc., Newark, DE, USA) using the PLAC® Test Activity Kit developed by diaDexus (diaDexus, Inc., San Francisco, CA) for the quantitative determination of Lp-PLA₂ activity in human plasma and serum. Principle of the test is based on Lp-PLA₂ hydrolysing the *sn*-2 position of the substrate, 1-myristoyl-2-(4-nitrophenylsuccinyl) phosphatidylcholine, and producing a coloured reaction product, 4-nitrophenol. Lp-PLA₂ activity was determined by spectrophotometrically monitoring the rate of 4-nitrophenol formation at 405 nm (secondary wavelength 510 nm) for 10 minutes, according to previously published methods (20,21). A minimum serum sample volume of 200 µL was required. Total reagent volume to fill an empty Siemens Flex® (Siemens Healthcare Diagnostics Inc., Newark, USA) cartridge was 12.0 mL for R1 (buffer) and 3.2 mL for R2 (substrate). Working volumes for a single test were 100 µL for R1 and 25 µL for R2. Under these conditions, 104 tests could be run with each cartridge. A 5-point calibration was performed using a set of five calibrators made with purified recombinant Lp-PLA₂ protein to generate activities of 0, 50, 100, 250, and 400 U/L, respectively. Calibrators were measured in triplicate. Calibration was verified by measuring high and low activity controls provided with the kit. Lp-PLA₂ activity was derived from the calibration curve by plotting change in absorbance versus Lp-PLA₂ activity in U/L.

Serum samples for method validation were provided by diaDexus. These samples had been previously obtained from healthy volunteers and stored at -70 °C. For the present study, samples were shipped on dry ice and were received frozen.

Precision

Assay precision was evaluated according to the EP15-A2 document of the Clinical and Laboratory Standards Institute (CLSI), using 5 different samples (2 controls and 3 serum samples) with known

Lp-PLA₂ activity distributed throughout the calibration range of the assay (22). Intra-assay precision was evaluated by running 20 replicates of each sample in a single assay run. Inter-assay precision was evaluated by running 4 replicates of each sample on 5 different days, with a new calibration every day.

Sensitivity

Assay sensitivity was evaluated by analysing 4 samples with known low Lp-PLA₂ activity (range 0 - 10 U/L) in 5 replicates over 5 calibration runs on 5 different days, for a total of 25 replicates for each sample. As specified by the manufacturer, predefined goals for bias and imprecision were respectively $\pm 5\%$ difference from reference value and a coefficient of variation (CV) < 20% at the limit of quantitation (LoQ).

Linearity

Assay linearity was determined by serial recovery studies performed on 3 pairs of different serum samples with high or low Lp-PLA₂ activity (range: 96 - 328 U/L). In each serum pair, samples were mixed at ratios of 0:100, 10:90, 20:80, 30:70, 40:60, 50:50, 60:40, 70:30, 80:20, 90:10, and 100:0, for a total of 11 activity levels which were measured in duplicate and then compared to expected calculated results.

Method comparison

Since there is no gold standard for Lp-PLA₂ activity to assess assay accuracy, the Bland-Altman plot was used to perform method comparison between the Dimension Vista® 1500 and the analytical platform used by the manufacturer. Lp-PLA₂ activity was measured in duplicates in a single assay run on 40 blind serum samples spanning an activity range of 5 - 365 U/L, which were provided by diaDexus. Our results were then compared to the activity values previously measured by diaDexus on the same samples using a Beckman Coulter AU400® analyser (Beckman Coulter Inc., Brea, USA).

Hook effect

The effect of substrate depletion due to high concentrations of Lp-PLA₂ protein on the measure-

ment of its enzymatic activity ("hook effect") was evaluated as follows: purified recombinant Lp-PLA₂ was diluted into the calibrator matrix to nominal Lp-PLA₂ activities of 0, 50, 75, 150, 225, 300, 400, 600, 750, 1000, 1250, 1500, and 2000 U/L. These samples were then analysed in duplicate. The concentration of recombinant Lp-PLA₂ was measured by the Bradford protein assay.

Analytical interferences

For interference testing, selected serum samples with Lp-PLA₂ activity in the range of 96 to 239 U/L were spiked with different levels of potentially interfering endogenous substances. A 6841.5 µmol/L bilirubin stock solution (Sigma-Aldrich Inc, St. Louis, MO, USA) was diluted in 0.1 M NaOH and spiked in serum samples to a concentration of 342.1 µmol/L. A 200 g/L albumin stock solution (Calbiochem, San Diego, CA, USA) was diluted in distilled water and spiked in serum samples to a concentration of 50 g/L. Baseline albumin concentration was also measured in each sample and total albumin (baseline + supplementary) was taken into account for interference evaluation. Haemolysate solution (in-house, 105 g/L haemoglobin) and Intralipid® 20% emulsion (Sigma-Aldrich Inc, St. Louis, USA; 20% = 2.3 mmol/L triglycerides) were ready to use. Serum samples with respectively 1.5 g/L, 1.25 g/L, and 1.0 g/L haemolysate were prepared. Intralipid® emulsion to a final triglycerides concentration of 2.8 mmol/L was added to selected serum samples. For each substance, controls were prepared by spiking serum samples with the corresponding solvent, when appropriate. Bilirubin, albumin and Intralipid® (triglycerides) were measured on the Dimension Vista® 1500 instrument. Haemoglobin (haemolysate) stock solution was measured on the XE-2100 automated haematology analyser (Sysmex, Kobe, Japan).

Lp-PLA₂ enzyme inhibition

A 5 mM stock solution of the Lp-PLA₂ inhibitor Darapladib was serially diluted in dimethyl sulfoxide (DMSO) in order to obtain 11 dilution levels with inhibitor concentrations ranging from 0.50 nM to 500 nM. Four different serum samples (Lp-

PLA₂ activity range: 97 - 243 U/L) were divided into 232 µL aliquots and 8 µL of each Darapladib dilution were spiked into individual aliquots from all 4 sera, for a total of 44 test samples. Lp-PLA₂ activity was measured in inhibitor spiked aliquots, unspiked aliquots, and aliquots spiked with 8 µL of DMSO alone as a control. Measured values were used to fit a dose-response curve for the determination of the *in vitro* half-maximal inhibitory concentration (IC50) of Darapladib.

On-board reagent stability

The R1 (buffer) and R2 (substrate) reagents were transferred to the specific Flex® cartridge and stored at 2 - 8 °C in the refrigerated compartment of the Dimension Vista® 1500 instrument for a maximum of 4 weeks. Lp-PLA₂ activity was measured in triplicate on high and low controls 3 times a week over a window of 28 days, for a total of 72 determinations, always using the same reagent set and calibration curve performed at day 0. Lp-PLA₂ activity variations of ± 5% from initial value were considered acceptable.

Statistical analysis

Statistical analysis was performed using MedCalc for Windows, version 13.0 (MedCalc Software, Ostend, Belgium). Method comparison between the Dimension Vista® 1500 and the Beckman AU400® was performed by Bland-Altman plot and Passing-Bablok regression analysis. The Kolmogorov-Smirnov test was used to assess the normality of distribution of Lp-PLA₂ activity in the whole study population, and in males and females separately. Reference intervals were defined according to CLSI document C28-A3 using the nonparametric method (minimum sample size required for each partition group: N = 120) and central 95th percentile of reference values (23). Differences between genders were tested by unpaired t-test. Spearman's and Pearson's correlation test was used to test the association between serum Lp-PLA₂ activity and serum concentrations of total cholesterol, LDL-cholesterol (directly measured), HDL-cholesterol, and triglycerides and the association between serum Lp-PLA₂ activity and age in the study population. The values P < 0.05 were considered statistically significant.

Results

Intra-assay variability analysis yielded within-run CVs ranging from 0.6% to 1.4% (Table 1). Inter-assay variability analysis yielded between-run CVs ranging from 0.9% to 2.0% (Table 1).

LoQ was determined as 5.8 U/L with a CV of 9.4%. Linear regression analysis of Lp-PLA₂ activity values (range: 96 - 328 U/L) from the serial recovery assay samples compared to expected activity values resulted in slopes ranging from 1.009 to 1.013, intercepts ranging from - 1.134 to 3.097 and R² ranging from 0.998 to 0.999. Detailed results are reported in Table 2.

The Bland-Altman plot used for the evaluation of agreement between the Dimension Vista® 1500 and the Beckman AU400® (Figure 1A) showed a

mean difference of - 0.9 U/L (95% CI: - 1.82 to 0.02), lower limit of - 6.5 U/L (95% CI: - 8.10 to - 4.94), upper limit of 4.7 U/L (95% CI: 3.14 to 6.30). Results of Passing-Bablok regression analysis are also shown (Figure 1B) (Slope = 1.02, 95% CI: 1.01 to 1.03; Intercept = - 1.86, 95% CI: - 3.08 to - 1.26; R² = 0.999).

No "hook effect" was observed for measured absorbance up to 450 OD x 10³/min, corresponding to a nominal recombinant Lp-PLA₂ activity of 1000 U/L (Figure 2). Recovery was within 90 - 110%.

Albumin, bilirubin, haemoglobin, and triglycerides (20% Intralipid®) were tested as potentially interfering endogenous substances as described in the Methods section. No interference was observed for haemoglobin up to 1.5 g/L, bilirubin up to 342

TABLE 1. Precision evaluation of the lipoprotein-associated phospholipase A2 activity assay on the Dimension Vista analyzer

Study sample	Intra-assay imprecision			Inter-assay imprecision		
	Lp-PLA ₂ , U/L	%CV	Package insert %CV	Lp-PLA ₂ , U/L	%CV	Package insert %CV
Low Control	121 (1.5)	1.2	-	121 (2.4)	2.0	-
High Control	295 (2.5)	0.8	-	301 (4.1)	1.4	-
Serum #1	98 (0.6)	0.6	-	99 (0.9)	0.9	-
Serum #2	200 (2.9)	1.4	-	201 (2.8)	1.4	-
Serum #3	254 (2.4)	0.9	-	258 (3.0)	1.2	-
Range	98 - 295 (0.6 - 2.9)	0.6 - 1.4	1.3 - 1.4	99 - 301 (0.9 - 4.1)	0.9 - 2.0	1.9 - 2.6

Lp-PLA₂ - lipoprotein-associated phospholipase A2. Lp-PLA₂ activities are presented as mean (standard deviation). CV - coefficient of variation. For intra-assay imprecision evaluation, 20 replicates of each sample were measured in a single assay run. For inter-assay imprecision evaluation, 4 replicates of each sample were measured on 5 different days. Ranges of intra- and inter-assay %CVs obtained by the manufacturer on a Beckman Coulter AU400 analyzer (package insert) are also shown.

TABLE 2. Linearity evaluation of the lipoprotein-associated phospholipase A2 activity assay on the Dimension Vista analyzer

Sample pair	High activity sample, U/L	Low activity sample, U/L	Linear regression			Package insert
			Slope	Intercept	R ²	
#1	299	96	1.01	- 1.13	0.999	Slope: 0.98 - 1.03
#2	316	97	1.01	- 0.17	0.999	Intercept: - 6.8 - 10.7
#3	328	97	1.01	3.10	0.998	R ² : 0.995 - 0.999

Three pairs of serum samples with high and low Lp-PLA₂ activities were used to obtain 11 Lp-PLA₂ activity levels in a serial recovery assay. Lp-PLA₂ activity was measured in duplicate in each level and mean values were compared to expected activity values. Linearity results obtained by the manufacturer on a Beckman Coulter AU400 analyzer (package insert) are also shown.

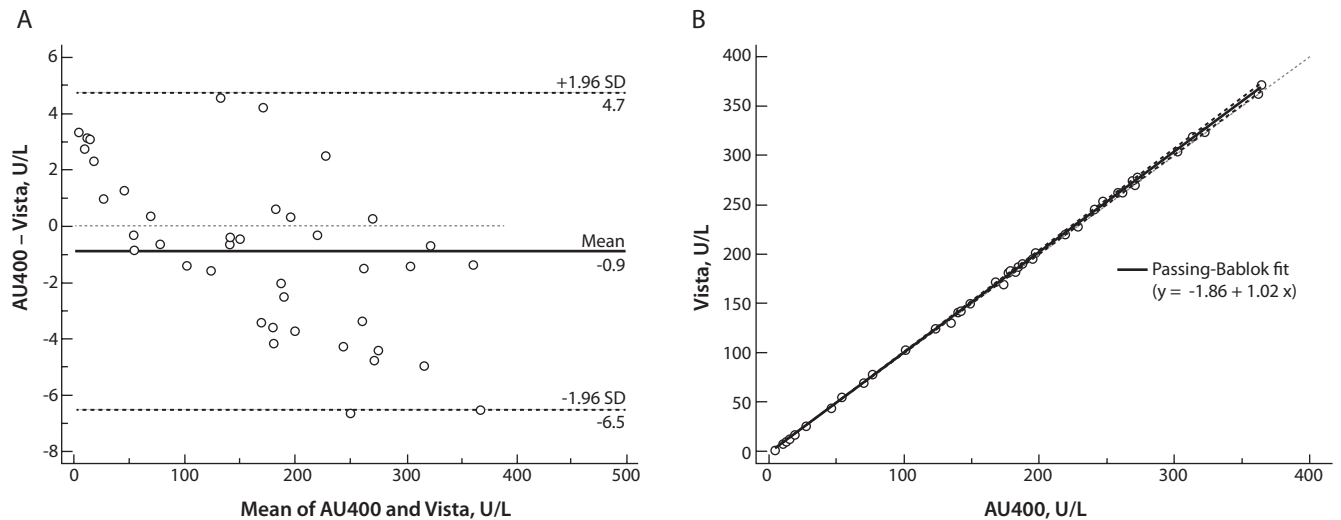


FIGURE 1. Comparison of lipoprotein-associated phospholipase A2 (Lp-PLA₂) activity values (N = 40) obtained on VISTA and AU400. (A) In the Bland-Altman plot the solid line shows mean difference, while the dashed lines show the ± 1.96 SD. (B) In the Passing-Bablok regression analysis, the dashed lines show the 95% confidence interval (CI), while dotted line represents identity ($X = Y$).

$\mu\text{mol/L}$, albumin up to 90 g/L (50 g/L spike + 40 g/L in serum), and triglycerides up to 2.8 mmol/L.

Dose-response data for the determination of the *in vitro* IC₅₀ of Darapladib were obtained by high precision Lp-PLA₂ activity inhibition assay (0.50 to 500 nM Darapladib spiked into multiple serum aliquots, baseline Lp-PLA₂ activity range: 97 – 243 U/L). These data were used to fit a dose-response

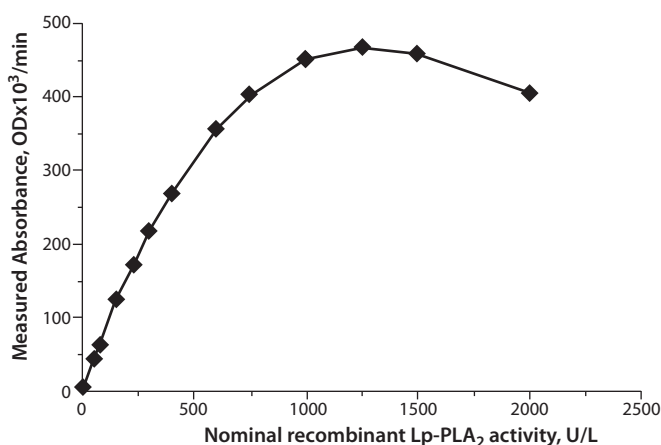


FIGURE 2. Hook effect evaluation of the lipoprotein-associated phospholipase A2 activity assay on the Dimension Vista analyser. Substrate depletion hooks back measured ODs only at recombinant lipoprotein-associated phospholipase A2 (Lp-PLA₂) activities > 1000 U/L.

curve to determine the IC₅₀ of the drug. Calculated *in vitro* IC₅₀ of Darapladib was < 50 nM.

Open vial reagents stability on-board the Dimension Vista[®] was demonstrated for 28 days by mean % difference from initial values of 2.1% (range: – 0.5% to 3.8%) and 0.4% (range: - 3.1% to 2.7%) for low and high activity controls, respectively.

Table 3 shows the main biochemical characteristics of 250 Italian adult healthy volunteers. In this population, Lp-PLA₂ activity levels presented a Gaussian distribution ($P = 0.98$) ranging from 71 to 290 U/L, with an average activity of 182 ± 44 U/L

TABLE 3. Main clinical and laboratory characteristics of the study cohort of healthy donors

Males, N	123
Females, N	127
Age, years	37 (18 - 70)
Glucose, mmol/L	4.7 ± 0.5
Triglycerides, mmol/L	0.9 ± 0.3
Total cholesterol, mmol/L	4.3 ± 0.6
LDL, mmol/L	2.8 ± 0.5
HDL, mmol/L	1.4 ± 0.3

Age is presented as median (min-max). Results are presented as mean \pm SD.

TABLE 4. Lipoprotein-associated phospholipase A2 activity values in adult healthy subjects

Percentile	Lp-PLA ₂ activity, U/L		
	Entire cohort (N = 250)	Males (N = 123)	Females (N = 127)
Minimum	71	87	71
2.5	93	107	84
5	106	135	97
20	144	171	128
33	164	187	145
50	183	205	165
67	203	224	179
80	220	241	192
95	254	260	217
97.5	262	265	225
Maximum	290	290	262
Mean	182	203	161
SD	44	40	37
2.5-97.5	93-262	107-265	84-225

Lp-PLA₂ - lipoprotein-associated phospholipase A2.

(mean ± SD). When separate statistical analysis was performed by gender, a Gaussian distribution was also observed for each gender (males, $P = 0.90$; females, $P = 0.44$). Mean Lp-PLA₂ activity levels in males were significantly higher than in females (203 ± 40 vs. 161 ± 37 U/L, respectively; $P < 0.001$). Lp-PLA₂ activity distribution amongst population percentiles and reference intervals are summarized in Table 4. In our population, no statistically significant correlation was found between Lp-PLA₂ activity and LDL-cholesterol (directly measured), HDL-cholesterol, and triglycerides. A moderate positive association was observed between serum Lp-PLA₂ activity and total cholesterol ($r = 0.29$, $P < 0.001$). No statistically significant correlation between Lp-PLA₂ activity and age.

Discussion

In consideration of the role of Lp-PLA₂ as a potential marker of vascular inflammation in atherosclerosis, we evaluated the analytical performance of

the PLAC[®] Test for the measurement of Lp-PLA₂ activity on the Siemens Dimension Vista[®] 1500 platform, for a possible application in routine clinical chemistry. Performance and practicability of the Dimension Vista[®] 1500 system are highly suitable for both routine and emergency use high-throughput system. Correlation studies were performed comparing our results obtained using the PLAC[®] Test for Lp-PLA₂ Activity Kit on a Siemens Dimension Vista[®] 1500 instrument to values previously established by the manufacturer using a Beckman Coulter AU400[®] platform. We show that the PLAC[®] Test exhibits very good overall analytical performance characteristics on the Dimension Vista[®] 1500, as revealed by the results obtained for intra- and inter-assay precision, accuracy, linearity and sensitivity. Our results are comparable to the performance characteristics stated in the package insert of the PLAC[®] Test for Lp-PLA₂ Activity Kit and to the assay performance established on other platforms and recently published by two independent groups (18,19).

Substrate depletion experiments demonstrated that the PLAC[®] Test can be used on a Dimension Vista[®] analyzer to measure without analytical errors Lp-PLA₂ activities as high as 1000 U/L. This particular feature would allow the accurate evaluation of patients at high and very high cardiovascular risk, whose Lp-PLA₂ activities could be more elevated. Analytical interference that may commonly be exerted by high concentrations of some endogenous substances (*i.e.*, albumin, haemoglobin, and lipids) was also evaluated and turned out to be very moderate. Moreover, the Dimension Vista[®] analyzer specifically alerted for potential interference according to standard HIL (haemolysis, icterus, and lipemia) indices. Open-vial stability of the PLAC Test[®] for Lp-PLA₂ Activity reagents stored on-board the Dimension Vista[®] was evaluated by means of repeated measurements of Lp-PLA₂ activity using the same reagent set, controls, and calibration curve. Reagents were stable for up to 4 weeks in the refrigerated compartment (2 - 8 °C) of the instrument, which is comparable to the stability claims reported by the manufacturer for the PLAC Test[®] for Lp-PLA₂ activity on other automated analytical systems. The maximum number of

determinations performed with a single reagent cartridge (104 tests) is consistent with many other routine tests already validated for this analyzer.

Recently, Lp-PLA₂ has been considered as a possible target for the treatment of atherosclerosis, and the selective Lp-PLA₂ inhibitor Darapladib has been tested as a possible strategy for the prevention and treatment of cardiovascular disease (24). However, the clinical trials conducted so far only yielded unsatisfactory results, so there is no evidence yet to support a strategy of targeted Lp-PLA₂ inhibition (25,26). We used Darapladib to evaluate inhibitor effect on Lp-PLA₂ activity in our samples. In agreement with previous findings, our selective inhibition results confirmed that the PLAC[®] Test allows the specific measurement of Lp-PLA₂ activity (24).

In the present work we also showed the results of preliminary population studies performed on a cohort of 250 Italian apparently healthy volunteers (123 males, 127 females, aged 18–70 years). We found that Lp-PLA₂ activities presented a Gaussian distribution in the whole population as well as in the two gender groups, with mean Lp-PLA₂ activity in males significantly higher than in females ($P < 0.001$) which is in agreement with previously published studies (27,28). Moreover, this study establishes for the first time RIs of serum Lp-PLA₂ activity in a healthy Italian population and proposes gender-specific RIs (107 - 265 U/L for males and 84 - 225 U/L for females) for clinical practice.

Recent recommendations have been issued for Lp-PLA₂ activity measurement especially in intermediate cardiovascular risk patients, in order to decide whether they should be moved to a higher risk category (16,17). However, uniform reporting of clinically relevant cut-points for Lp-PLA₂ activity in terms of increased risk for cardiovascular events has not been achieved yet. As claimed by the manufacturer, the PLAC[®] Test incorporates a cut point of 225 U/L for Lp-PLA₂ activity (which is expressed as nmol/min/mL in the package insert), which would identify patients at increased risk for coronary heart disease (CHD) events. This value was derived from the results obtained by the analysis of plasma samples from 5446 subjects in the placebo arm of the JUPITER Study, by which a cut

point of 225 U/L was derived to differentiate subjects at increased risk for CVD events by Cox proportional hazards regression (29). Use of the proposed cut-point in our whole study population identifies 84% and 16% of the 250 subjects with low or high activity, respectively. In a population outcome-based sub-study conducted on nearly 5000 subjects from the REGARDS Study, it has been shown that Lp-PLA₂ activity above the sex-specific 80th percentile (250 U/L in males, 200 U/L in females) was associated with CHD risk over 5.3 years by Cox proportional hazards regression (30). These values are very similar to the sex-specific 80th percentiles of our study population (241 U/L in males, 192 U/L in females).

In the healthy donor study cohort, there was no statistically significant association between age and Lp-PLA₂ activity, while a moderate positive correlation was observed with Lp-PLA₂ activity and total cholesterol, but not LDL cholesterol. This may well be due to the fact that part of Lp-PLA₂ is carried by HDL also, while total cholesterol, which reflects the sum of LDL, HDL and, to a lower extent, other cholesterol carrying lipoproteins, is more directly associated with circulating Lp-PLA₂.

Although our research has reached its aims, this study has some limitations. In particular, the selected population of healthy donors is relatively young (median age 37 years), and therefore our findings may not translate to older populations. Nevertheless, our preliminary data are encouraging, and we are planning to extend this study in the future by increasing the number and age of enrolled participants. We also believe that further analysis of potential endogenous interferents (for example, higher concentrations of triglycerides) as well as selected exogenous agents such as lipid lowering drugs, would be valuable in order to meet suitable analytical conditions for the measurement of Lp-PLA₂ activity in patients with treated and untreated dyslipidemia.

Based on our results, we can conclude that the PLAC[®] Test allows accurate and precise measurement of serum Lp-PLA₂ activity on the Dimension Vista[®] 1500 automatic analyzer. Our findings add to the results previously obtained on other automatic clinical chemistry analyzers, and can con-

tribute to the method harmonization process for Lp-PLA₂ activity measurement (18,19). Taken together, the high-throughput potential of the Dimension Vista[®] 1500 analyzer and the overall performance characteristics of the PLAC[®] Test could provide a valuable tool for cardiovascular risk assessment in both primary and secondary prevention of cardiovascular disease, as well as for epidemiological investigations.

References

- Farr RS, Cox CP, Wardlow ML, Jorgensen R. Preliminary studies of an acid-labile factor (ALF) in human sera that inactivates platelet activating factor (PAF). *Clin Immunol Immunopathol* 1980;15:318-30. [https://doi.org/10.1016/0090-1229\(80\)90044-6](https://doi.org/10.1016/0090-1229(80)90044-6)
- Tew DG, Southan C, Rice SQ, Lawrence MP, Li H, Boyd HF, et al. Purification, properties, sequencing, and cloning of a lipoprotein-associated, serine-dependent phospholipase involved in the oxidative modification of low-density lipoproteins. *Arterioscler Thromb Vasc Biol* 1996;16:591-9. <https://doi.org/10.1161/01.ATV.16.4.591>
- Silva IT, Mello AP, Damasceno NR. Antioxidant and inflammatory aspects of lipoprotein-associated phospholipase A₂ (Lp-PLA₂): a review. *Lipids Health Dis* 2011;10:170. <https://doi.org/10.1186/1476-511X-10-170>
- MacPhee CH, Moores KE, Boyd HK, Dhanak D, Ife RJ, Leach CA, et al. Lipoprotein-associated phospholipase A₂, platelet activating factor acetylhydrolase, generates two bioactive products during the oxidation of low density lipoprotein: use of a novel inhibitor. *Biochem J* 1999;338:479-87. <https://doi.org/10.1042/bj3380479>
- Di Pietro N, Formoso G, Pandolfi A. Physiology and pathophysiology of oxLDL uptake by vascular wall cells in atherosclerosis. *Vascul Pharmacol* 2016;84:1-7. <https://doi.org/10.1016/j.vph.2016.05.013>
- Gonçalves I, Edsfeldt A, Ko NY, Grufman H, Berg K, Björkbacka H, et al. Evidence supporting a key role of Lp-PLA₂-generated lysophosphatidylcholine in human atherosclerotic plaque inflammation. *Arterioscler Thromb Vasc Biol* 2012;32:1505-12. <https://doi.org/10.1161/ATVBAHA.112.249854>
- Packard CJ, O'Reilly DS, Caslake MJ, McMahon AD, Ford I, Cooney J, et al. Lipoprotein-associated phospholipase A₂ as an independent predictor of coronary heart disease. West of Scotland Coronary Prevention Study Group. *N Engl J Med* 2000;343:1148-55. <https://doi.org/10.1056/NEJM200010193431603>
- Zalewski A, Macphee C. Role of lipoprotein-associated phospholipase A₂ in atherosclerosis: biology, epidemiology, and possible therapeutic target. *Arterioscler Thromb Vasc Biol* 2005;25:923-31. <https://doi.org/10.1161/01.ATV.0000160551.21962.a7>
- Oei HH, van der Meer IM, Hofman A, Koudstaal PJ, Stijnen T, Breteler MM, et al. Lipoprotein-associated phospholipase A₂ activity is associated with risk of coronary heart disease and ischemic stroke: the Rotterdam Study. *Circulation* 2005;111:570-5. <https://doi.org/10.1161/01.CIR.0000154553.12214.CD>
- Kolodgie FD, Burke AP, Skorija KS, Ladich E, Kutys R, Makuria AT, et al. Lipoprotein-associated phospholipase A₂ protein expression in the natural progression of human coronary atherosclerosis. *Arterioscler Thromb Vasc Biol* 2006;26:2523-29. <https://doi.org/10.1161/01.ATV.0000244681.72738.bc>
- Younus A, Humayun C, Ahmad R, Ogunmoroti O, Kandimalla Y, Aziz M, et al. Lipoprotein-associated phospholipase A₂ and its relationship with markers of subclinical cardiovascular disease: A systematic review. *J Clin Lipidol* 2017;11:328-37. <https://doi.org/10.1016/j.jacl.2017.02.005>
- Koenig W, Khuseynova N, Löwel H, Trischler G, Meisinger C. Lipoprotein-associated phospholipase A₂ adds to risk prediction of incident coronary events by C-reactive protein in apparently healthy middle aged men from the general population: results from the 14-year follow-up of a large cohort from southern Germany. *Circulation* 2004;110:1903-8. <https://doi.org/10.1161/01.CIR.0000143377.53389.C8>
- Thompson A, Gao P, Orfei L, Watson S, Di Angelantonio E, Kaptoge S, et al. Lp-PLA(2) Studies Collaboration. Lipoprotein-associated phospholipase A₂ and risk of coronary disease, stroke, and mortality: collaborative analysis of 32 prospective studies. *Lancet* 2010;375:1536-44. [https://doi.org/10.1016/S0140-6736\(10\)60319-4](https://doi.org/10.1016/S0140-6736(10)60319-4)
- Ridker PM, Rifai N, Rose L, Buring JE, Cook NR. Comparison of C-reactive protein and low-density lipoprotein cholesterol levels in the prediction of first cardiovascular events. *N Engl J Med* 2002;347:1557-65. <https://doi.org/10.1056/NEJMoa021993>
- Daniels LB, Laughlin GA, Sarno MJ, Bettencourt R, Wolfert RL, Barrett-Connor E. Lipoprotein-associated phospholipase A₂ is an independent predictor of incident coronary heart disease in an apparently healthy older population: The Rancho Bernardo Study. *J Am Coll Cardiol*. 2008;51:913-9. <https://doi.org/10.1016/j.jacc.2007.10.048>

Acknowledgments

We would like to thank diaDexus, Inc. for providing Lp-PLA₂ activity assay reagents.

Potential conflict of interest

None declared.

16. Davidson MH, Corson MA, Alberts MJ, Anderson JL, Gorelick PB, Jones PH, et al. Consensus panel recommendation for incorporating lipoprotein-associated phospholipase A2 testing into cardiovascular disease risk assessment guidelines. *Am J Cardiol* 2008;101:51F-7F. <https://doi.org/10.1016/j.amjcard.2008.04.019>
17. Perk J, De Backer G, Gohlke H, Graham I, Reiner Z, Verschuren M, et al. European Guidelines on cardiovascular disease prevention in clinical practice (version 2012). The Fifth Joint Task Force of the European Society of Cardiology and Other Societies on Cardiovascular Disease Prevention in Clinical Practice (constituted by representatives of nine societies and by invited experts). *Eur Heart J* 2012;33:1635–701. <https://doi.org/10.1093/eurheartj/ehs092>
18. Donato LJ, Meeusen JW, Callanan H, Saenger AK, Jaffe AS. Advantages of the lipoprotein-associated phospholipase A2 activity assay. *Clin Biochem* 2016;49:172-5. <https://doi.org/10.1016/j.clinbiochem.2015.09.002>
19. Cerelli MJ, Grimm K, Duan X, Mulberg E, Jalilie M, Sekella P, et al. Evaluation of recombinant enzyme calibration to harmonize lipoprotein-associated phospholipase A2 activity results between instruments. *Clin Biochem* 2016;49:480–5. <https://doi.org/10.1016/j.clinbiochem.2015.11.018>
20. McConnell JP, Hoefner DM. Lipoprotein-associated phospholipase A2. *Clin Lab Med* 2006;26:679-97. <https://doi.org/10.1016/j.cll.2006.06.003>
21. Kosaka T, Yamaguchi M, Soda Y, Kishimoto T, Tago A, Toyosato M, et al. Spectrophotometric assay for serum platelet-activating factor acetylhydrolase activity. *Clin Chim Acta* 2000;296:151-61. [https://doi.org/10.1016/S0009-8981\(00\)00216-3](https://doi.org/10.1016/S0009-8981(00)00216-3)
22. Clinical and Laboratory Standards Institute. User verification of performance for precision and trueness; approved guideline – 2nd ed. CLSI document: EP15-A2. Wayne, PA, USA: CLSI, 2005.
23. Clinical Laboratory Standards Institute. Defining, establishing and verifying reference intervals in the clinical laboratory; approved guideline – 3rd ed. CLSI document: C28-A3. Wayne, PA, USA: CLSI, 2010.
24. Blackie JA, Bloomer JC, Brown MJ, Cheng HY, Hammond B, Hickey DM, et al. The identification of clinical candidate SB-480848: a potent inhibitor of lipoprotein-associated phospholipase A2. *Bioorg Med Chem Lett* 2003;13:1067-70. [https://doi.org/10.1016/S0960-894X\(03\)00058-1](https://doi.org/10.1016/S0960-894X(03)00058-1)
25. White HD, Held C, Stewart R, Tarka E, Brown R, Davies RY, et al. Darapladib for Preventing Ischemic Events in Stable Coronary Heart Disease. *The N Engl J Med* 2014;370:1702-11. <https://doi.org/10.1056/NEJMoa1315878>
26. O'Donoghue ML, Braunwald E, White HD, Lukas MA, Tarka E, Steg PG, et al. Effect of darapladib on major coronary events after an acute coronary syndrome: The SOLID-TIMI 52 randomized clinical trial. *JAMA* 2014;312:1006-15. <https://doi.org/10.1001/jama.2014.11061>
27. Brilakis ES, Khera A, McGuire DK, See R, Banerjee S, Murphy SA, et al. Influence of Race and Sex on Lipoprotein-Associated Phospholipase A2 Levels: Observations from the Dallas Heart Study. *Atherosclerosis* 2008;199:110–5. <https://doi.org/10.1016/j.atherosclerosis.2007.10.010>
28. Garg PK, McClelland RL, Jenny NS, Criqui MH, Greenland P, Rosenson RS, et al. Lipoprotein-associated phospholipase A2 and risk of incident cardiovascular disease in a multi-ethnic cohort: The multi ethnic study of atherosclerosis. *Atherosclerosis* 2015;241:176-82. <https://doi.org/10.1016/j.atherosclerosis.2015.05.006>
29. Ridker PM, MacFadyen JG, Wolfert RL, Koenig K. Relationship of lipoprotein associated phospholipase A(2) mass and activity with incident vascular events among primary prevention patients allocated to placebo or to statin therapy: an analysis from the JUPITER trial. *Clin Chem* 2012;58:877–86. <https://doi.org/10.1373/clinchem.2011.180281>
30. Cushman M, Judd S, Kissela B, Jenny N, Elkind M, Safford M. Lipoprotein associated phospholipase A2 (Lp-PLA2) activity and coronary heart disease risk in a biracial cohort: The reasons for geographic and racial differences in stroke (REGARDS) cohort. *Atherosclerosis* 2015;241:e9. <https://doi.org/10.1016/j.atherosclerosis.2015.04.048>