

Optimizing process conditions for multiple quality criteria in micro-injection moulding

U M Attia^{1*} and J R Alcock²

¹ *Building 56, Cranfield University, Wharley End, Cranfield, Bedfordshire, MK43 0AL, UK.*
Phone: +44 (0) 1234750111 ext. 2408. E-mail: u.attia@cranfield.ac.uk

² *Building 61, Cranfield University, Wharley End, Cranfield, Bedfordshire, MK43 0AL, UK.*
E-mail: j.r.alcock@cranfield.ac.uk

This paper presents a statistical technique to optimise process conditions for multiple quality criteria in micro-injection moulding. A sample hierarchical component with micro-features was replicated, where it was required to improve the process conditions for both complete mould filling and variability in mass. A design-of-experiments approach was used to investigate the effect of five processing parameters on both criteria. It was found that holding pressure, melt temperature and injection velocity were statistically significant for part mass, whereas injection velocity alone was significant for mass variation. Desirability functions were used to predict processing conditions that improved both requirements within pre-set conditions. The technique was validated by experiment and it was shown to be applicable for process parameters for multiple criteria.

Keywords: Micro-injection moulding, design-of-experiments, multiple criteria

1. Introduction

Micro-injection moulding (μ IM) is a key technology in mass-producing micro-scaled components. High-volume production, replication fidelity and high precision are some of the features that promote the use of μ IM for applications such as medical diagnostics and chemical analysis.

Quality parameters in μ IM are usually associated with the ability to completely fill the micro-size cavities in the mould cavity during processing. Table 1 presents a number of designed experiments' methods (DOE) used to evaluate the effect of process parameters on different responses in micro-injection moulding.

Factors and DOE method	Response	Materials	Main results	Ref.
Melt temp., injection pressure, holding pressure, injection speed and mould temp.	Filling quality of micro-featured channels	PC, SBS, MABS, COC and PMMA	Melt temp. and mould temp. are most significant parameters.	[1]
Injection time, injection pressure, injection temp. and mould temp. DOE design: Level 9 orthogonal Taguchi design.	3D numerical simulation of part filling.	PS, PC and PMMA	The mould temp. is the most important parameter. It must be higher than material T_g .	[2]

Injection speed, holding pressure time, cooling time, metering size, melt temp. and mould temp. DOE design: 2-level half factorial (2^{5-1}) and 2-level fractional factorial design (2^{3-1}).	Part mass and dimensions	PC and POM	Metering size and holding pressure are most significant. The interaction between both is also important	[3,4]
Injection speed, injection pressure, mould temperature and injection time. DOE design: Level 9 orthogonal Taguchi design.	Part mass	POM	Mould temperature is the most significant parameter. High mould temperature, injection speed and injection pressure are recommended for filling.	[5]
Injection speed, mould temp., melt temp. and holding pressure. DOE design: 2-level full-factorial (2^4).	Complete filling of donut-shaped parts	PS and PC	Injection speed and holding pressure are the most influential, while melt temp. and mould temp. have less influence.	[6]
Melt temp., mould temp., injection speed, holding pressure, air evacuation and the size of features. DOE design: 2-level fractional factorial (2^{6-2}).	Complete filling of high-aspect-ratio rods.	PP, POM and ABS	Melt temp. and injection speed are key factors for PP and ABS. Mould temp. is also significant in case of POM.	[7]
Injection speed, shot size, vacuum, holding pressure, piston diameter. DOE design: 2-level full factorial (2^5).	Micro-feature height.	PC	The diameter of the piston, shot size, injection speed and mould temperature are significant parameters.	[8]
Melt temp., mould temp., injection speed and distance between micro-features. DOE design: 2-level full factorial designs (2^2) for PP and ABS and (2^3) for POM.	Complete filling of micro-structures.	PP, POM and ABS	Injection speed and melt temp. are influential in case of POM and ABS with some side effects. Mould temp. improves filling for some shapes. Distance between micro-features is not influential.	[9]
Melt temp., mould temp., injection speed and surface finish. DOE design: Level 9 orthogonal Taguchi design.	Flow length along a micro-channel into a flat cavity.	PP, ABS and PC	The high levels of all processing parameters result in better filling. Surface finish is related to level of turbulence in melt flow.	[10]
Melt temp., mould temp., injection speed and holding pressure. DOE design: 2-level full factorial designs (2^2).	Weld-line formation.	PS	Injection speed and mould temperature have the main effect on weld-line placement and orientation.	[11]
Melt temp., mould temp., cooling time and ejection delay time. These were combined with surface treatment. DOE design: Level 9 orthogonal Taguchi design.	Ejection forces.	ABS and PC	Surface treatment reduces ejection forces.	[12]
Injection pressure, melt temp., mould temp. and flow ratio. DOE design: Level 9 orthogonal Taguchi design.	Flow length	PP	Melt temp. and injection pressure are the most significant factors.	[13]

Holding pressure, filling flow rate and mould temperature. DOE design: Taguchi orthogonal design L ₁₈ (2 ¹ x 3 ⁷).	Filled volume fraction of microfilters	COC	Flow rate found to be the most important processing parameter	[14]
Melt temp., mould temp., injection pressure, holding pressure, ejection temp. and injection speed. DOE design: Taguchi orthogonal design L ₁₈ (3 ⁷).	Tensile strength of weld lines.	PP	High melt temperatures decrease weld line strength. Higher mould temperatures and injection speed increases strength.	[15]
Back pressure, mould temp., melt temp., hold pressure, holding time, injection speed, metering size and cooling time. DOE design: Taguchi orthogonal design L ₁₈ , followed by a robust parameter design using a 2-level full factorial design (2 ³).	Multiple quality characteristics: gear outside diameter and tooth thickness.	POM	Significant parameters for diameter are mould temp., injection speed and pack pressure, whereas for tooth thickness they are holding pressure, cooling time and mould temperature. Mould temperature and holding pressure affects multiple quality characteristics.	[16]

29 Table 1: DOE methods and responses used to evaluate the effect of process parameters on Micro-injection
30 moulding.

31

32 The work summarised above has focused on using design-of-experiment (DOE) approach to study the
33 effect of a set of process parameters on a single response. However, micro-manufacturing processes such as μ IM
34 may often require a number of quality criteria to be met simultaneously. These could be, for example, a specific
35 feature dimension and a maximum acceptable variability in part mass. In such cases, an optimisation process
36 would be required to attempt to meet both requirements within the “process window” that was available.

37 Process variability, in this context, refers to variations that occur normally in industrial processes. Such
38 variations are usually attributed to changes in process parameters (factors), i.e. those which can be varied in a
39 controlled manner, and/or changes that result from other causes, which have not been or cannot be controlled. In
40 experimental terms, the former variations are usually referred to as the *signal* [17], or *systematic variability*
41 [18], which is the change of response that the experimenter is seeking to detect. The latter is usually
42 referred to as the *noise, scatter or unsystematic variability* of the response that occurs during standard operation
43 conditions.

44 This paper presents an example of a micro-injection moulded part, where DOE was used to investigate
45 the effect of processing parameters on two quality criteria, namely complete mould filling, as represented by part
46 mass and variability in part mass in replicated experiments. A desirability function approach was then used to
47 attempt to optimise process conditions for both responses.

48 2. Experiments

49 2.1 Overview of statistical methodology

50 The aspect of variability that was investigated in this paper was that of replicability. *Replication*, in this
51 context, is the process of running experimental trials in a random order, such that resetting is done after each
52 experimental trial [17,19]. Hence, investigating variability using DOE requires that each set of DOE experiments

53 is replicated as part of the experimental methodology. This is in contrast with *repetition*, which is the process of
 54 running experimental trials under the same combination of machine parameters during a single machine run [17].

55 DOE assumes that responses follow a normal probability distribution, which is not the case for standard
 56 deviation. Hence, variability was represented here using the natural logarithm of the standard deviation, $\ln(\text{SD})$,
 57 which transforms the data closer to a normal distribution [17,20].

58 To improve both replicability and part quality a statistical tool was required to optimise factors for
 59 multiple responses [20,21]. Here, desirability functions were used to predict a combination of processing
 60 parameters that fulfilled the two requirements. Each response y_i is individually converted into a desirability
 61 function d_i that ranges between 0 and 1, where $d_i=1$ represents being at the target and $d_i=0$ lies outside the target
 62 range. The factors are calculated to maximise the overall desirability, D , where $D = (d_1 \cdot d_2 \cdot \dots \cdot d_m)^{1/m}$, and m is the
 63 number of responses.

64 Objectives of the desirability functions can be either to meet a target within specified range, to
 65 minimize or to maximize responses. In this paper, the target T was to produce parts within a specific mass range
 66 and to minimize variability in part mass. The individual functions for meeting a target and minimising the
 67 response are represented in Equations (1) and (2), respectively.

$$68 \quad d_1 = \begin{cases} 0 & y < L \\ \left(\frac{y-L}{T-L}\right)^{r_1} & L \leq y \leq T \\ \left(\frac{U-y}{U-T}\right)^{r_2} & T \leq y \leq U \\ 0 & y > U \end{cases} \quad (1)$$

$$69 \quad d_2 = \begin{cases} 1 & y < T \\ \left(\frac{U-y}{U-T}\right)^r & T \leq y \leq U \\ 0 & y > U \end{cases} \quad (2)$$

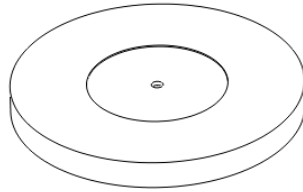
70 In both equations U and L are the upper and lower limits, respectively, and r -values are the function
 71 weight (linear or non-linear), which in this case are all set to be equal to 1.

72 For Equation (1) the target, upper and lower values were selected based on the filling quality of the
 73 produced samples. Briefly, after each set of experiments, samples of the 16 runs were inspected under the
 74 microscope to check their filling quality. The completely filled parts were weighed and their average mass was
 75 calculated and set as the “target” mass for the desirability function. The filled samples that had the smallest and
 76 the largest masses were also identified, and their weights were selected as the lower and upper limits,
 77 respectively.

78 A similar approach was followed for Equation (2), except that no lower limit existed, since the purpose
 79 of the function was to minimise the response (variability).

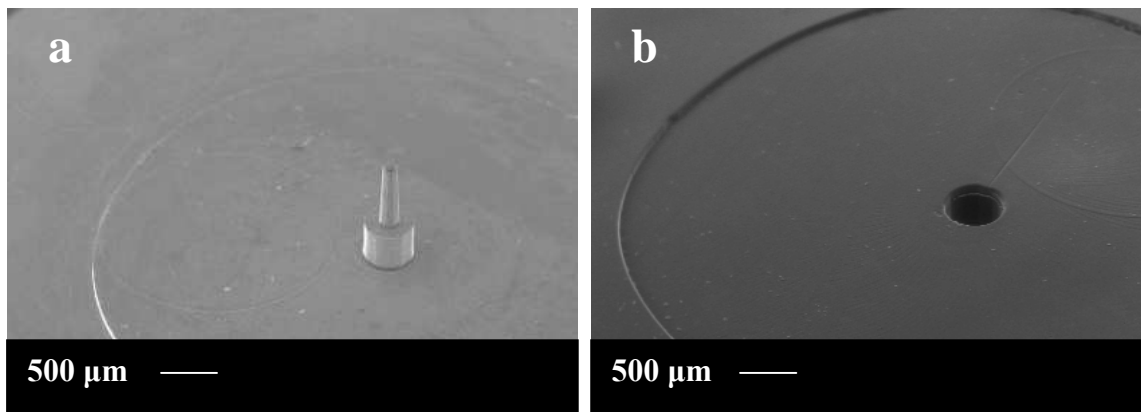
80 2.2 Component geometry

81 The component chosen for this study was a Polymethyl Methacrylate (PMMA) assembly element of a
82 microfluidic device for use in medical diagnostics. As illustrated in Figure 1, the element is disc-shaped with a
83 diameter of 10 mm and a thickness of 1 mm.
84



85
86 **Fig 1** A CAD drawing of the test element.
87

88 More details about the manufacturing process-chain and device design are available in the literature
89 [22,23]. The component possessed several micro-scale geometries, including a central, conically shaped through-
90 hole that was 100 μm to 150 μm in diameter, and a disk impression on the component surface, which had a depth
91 of 50 μm . Figure 2 shows SEM micrographs of the mould insert and an example of a replicated PMMA part
92 from a fully-filled moulding.
93



94
95
96
97
98 **Fig 2** SEM micrographs of (a) mould insert and (b) replicated PMMA part.
99

100

101 2.3 Equipment and process parameters:

102 Five process parameters (factors) were investigated: Polymer-melt temperature (T_p), mould temperature
103 (T_m), holding pressure (P_h), Injection velocity (V_i) and cooling time (t_c).

104 The micro moulding machine used was a Battenfeld Microsystems 50. The PMMA material was VS-
105 UVT from Altuglas[®]. This particular grade was selected for its ease of flow (MFI = 24 g/10 min) and its optical
106 transparency (light transmittance 92%). The Vicat softening temperature of the material is 85°C. The minimum
107 melt and mould temperatures recommended by the manufacturer were 195°C and 50°C, respectively. A sensitive
108 weighing scale with a readability of 0.01 mg was used to weigh the parts. Data analysis and optimization was
109 conducted with Minitab[®] 15 [24].

110 **2.4 Experimental design and procedure**

111 A two-level, half-factorial (2^{5-1}) design was used to test the effect of process parameters on the two
 112 selected responses. The resolution-V design decreases the number of required experiments to half of that of a
 113 full-factorial one (16 runs per experiment instead of 32). In addition, in this particular design main effects are not
 114 confounded with second-order interactions, and second-order interactions are not confounded with each other.
 115 This allowed for fewer experimental runs without compromising the accuracy of the results.

116 Table 2 presents the levels of the five factors tested in the experimental design.
 117

Metering Volume [mm ³]	T _p [°C]		T _m [°C]		V _i [mm/s]		P _h [MPa]		t _c [s]	
	Low level (-)	High level (+)	Low level (-)	High level (+)	Low level (-)	High level (+)	Low level (-)	High level (+)	Low level (-)	High level (+)
178	230	250	72	80	200	300	10	30	4	7

118 Table 2. Higher and lower levels for the five factors.

119

120 Table 3 presents the half-factorial design in its standard order. The experiments were performed
 121 following a randomised order of the runs using a built-in randomisation function in Minitab. For each run, the
 122 machine was left to finish 50 continuous cycles (repeats) and then 10 parts were collected for inspection. This
 123 was done to ensure that the process reached stability before sample collection. The experimentation setup shown
 124 in Table 3 was replicated three times in randomised run sequences.

125

Standard Order	T _p [°C]	T _m [°C]	P _h [MPa]	V _i [mm/s]	t _c [s]
1	-	-	-	-	+
2	+	-	-	-	-
3	-	+	-	-	-
4	+	+	-	-	+
5	-	-	+	-	-
6	+	-	+	-	+
7	-	+	+	-	+
8	+	+	+	-	-
9	-	-	-	+	-
10	+	-	-	+	+
11	-	+	-	+	+
12	+	+	-	+	-
13	-	-	+	+	+
14	+	-	+	+	-
15	-	+	+	+	-
16	+	+	+	+	+

126 Table 3. A half-factorial, two level 16-run (2^{5-1}) experimentation design.

127

128 Two outputs were evaluated: filling quality and process variability. The former response was
129 represented by the average mass calculated from the three replicates (\bar{W}), where producing a part that has a mass
130 within a specific tolerance indicates that it is completely filled. Inspecting the replicated parts under the
131 microscope showed that completely filled parts had average mass of 88.6 mg within a range of approximately
132 $\pm 0.5\%$. The latter response was represented by $\ln(\text{SD})$, calculated from the standard deviation of the three
133 replicates.

134 As outlined above, desirability functions were used to optimise factors for part mass and variability.
135 The filled part mass tolerance was used to pre-set the conditions used in the desirability function to a target mass
136 of 88.6 mg, a lower limit of 88.4 mg and an upper limit of 89 mg, based on the 0.5 percentage point limits. The
137 target for process variability was set to minimise the value of $\ln(\text{SD})$, such that its maximum value would not
138 exceed -1.9, corresponding to SD of 0.15. This set the upper limit not to exceed the average of the SD found
139 from the previous 16 runs of the DOE.

140 Table 4 presents the combination of factors calculated from Equations 1 and 2 to meet both these
141 requirements. The responses show the expected values for both mass and variability. The values of d_1 and d_2
142 represent the individual desirabilities of each response from Equations (1) and (2). D represents the combined
143 desirability, which is a measure of how the factors combination recommended by the function was able to meet
144 both response requirements.

145

Factors	
Melt T [°C]	250
Mould T [°C]	80
Hold [MPa]	30
Inj. V [mm/s]	285
Cool t [sec]	4
Responses	
Part mass [mg]	88.5
d_1	0.72
$\ln(\text{SD})$	-2.0
d_2	0.97
D	0.83

146 Table 4. Factors combination suggested by desirability function for multiple responses.

147

148

149 3. Results

150 Table 5 lists the measured masses of the replicated parts for the three replicated experimental sets R1,
151 R2 and R3. The average mass (\bar{W}) of the three replicates and $\ln(\text{SD})$ are listed as the first and second response
152 of the DOE, respectively.

153

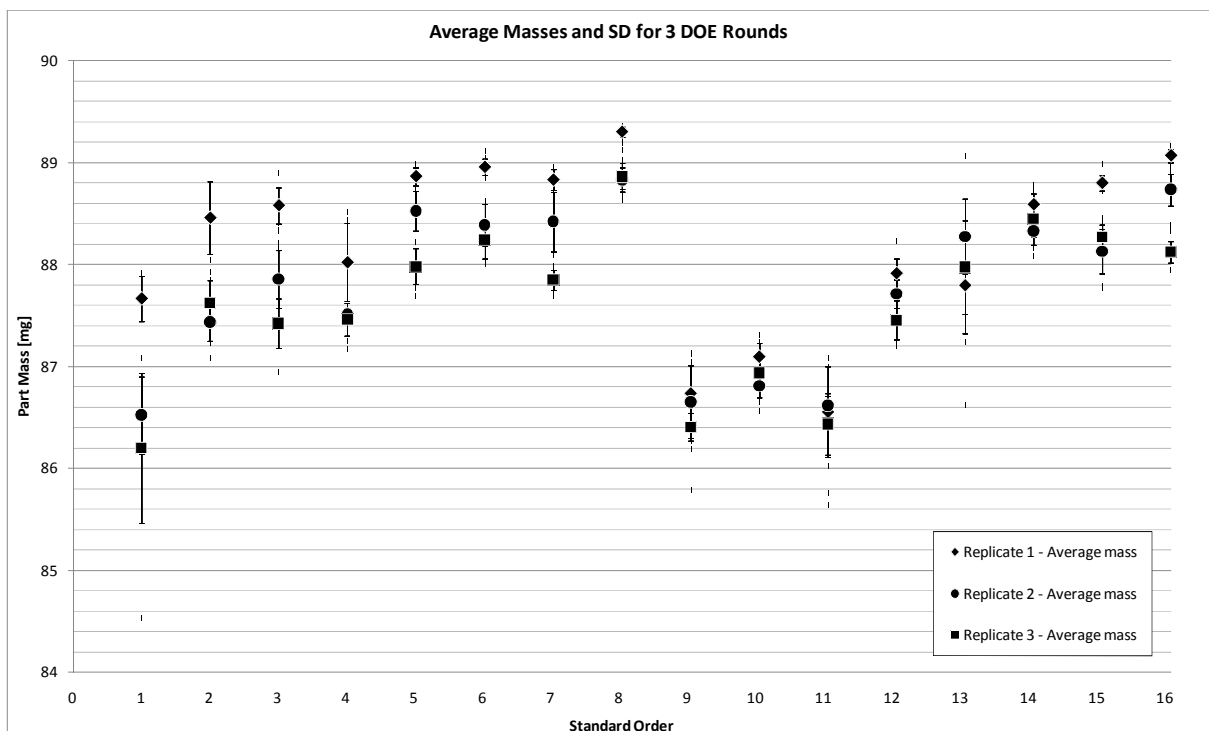
	T_p	T_m	P_h	V_i	t_c	Average mass [mg]			W [mg]	SD	ln (SD)
						R1	R2	R3			
1	-	-	-	-	+	87.7	86.5	86.2	86.8	0.77	-0.26
2	+	-	-	-	-	88.5	87.4	87.6	87.8	0.54	-0.61
3	-	+	-	-	-	88.6	87.9	87.4	88.0	0.58	-0.54
4	+	+	-	-	+	88.0	87.5	87.5	87.7	0.31	-1.18
5	-	-	+	-	-	88.9	88.5	88.0	88.5	0.44	-0.81
6	+	-	+	-	+	89.0	88.4	88.2	88.5	0.38	-0.98
7	-	+	+	-	+	88.8	88.4	87.9	88.4	0.49	-0.71
8	+	+	+	-	-	89.3	88.8	88.9	89.0	0.26	-1.34
9	-	-	-	+	-	86.7	86.7	86.4	86.6	0.17	-1.77
10	+	-	-	+	+	87.1	86.8	86.9	87.0	0.14	-1.94
11	-	+	-	+	+	86.6	86.6	86.4	86.6	0.09	-2.39
12	+	+	-	+	-	87.9	87.7	87.5	87.7	0.23	-1.47
13	-	-	+	+	+	87.8	88.3	88.0	88.0	0.24	-1.41
14	+	-	+	+	-	88.6	88.3	88.5	88.5	0.13	-2.04
15	-	+	+	+	-	88.8	88.1	88.3	88.4	0.35	-1.04
16	+	+	+	+	+	89.1	88.7	88.1	88.6	0.48	-0.74

154 Table 5. Average masses of measured repeats for each of the three replicates (R1 to R3).
 155

156

157 Figure 3 plots the average masses listed in Table 5 in addition to interval lines that represent the
 158 standard deviation of the repeated cycles for each of the 16 runs. The interval lines represent the *repeatability* of
 159 the process whilst the three average-mass points represent the *replicability* of the process.

159



160

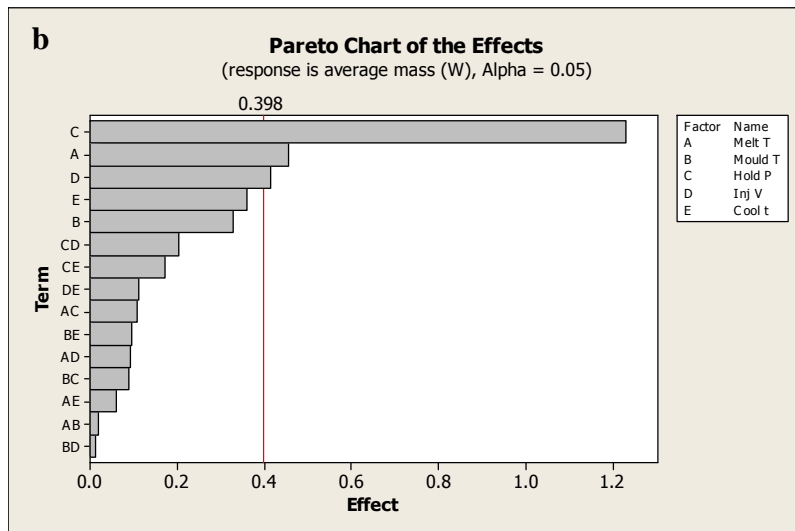
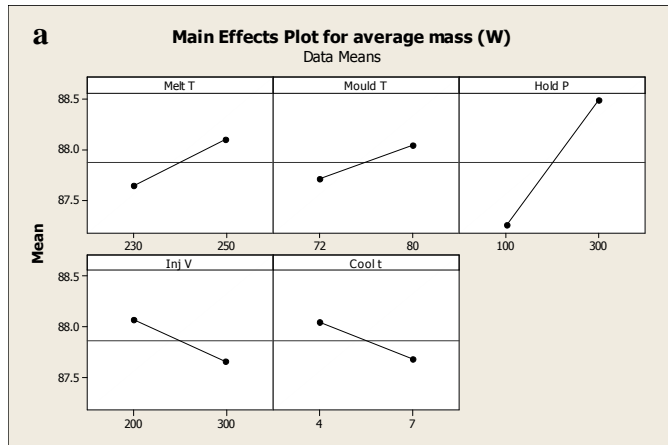
161 **Fig 3** Average masses of three replicates and corresponding SD interval lines.
 162

163

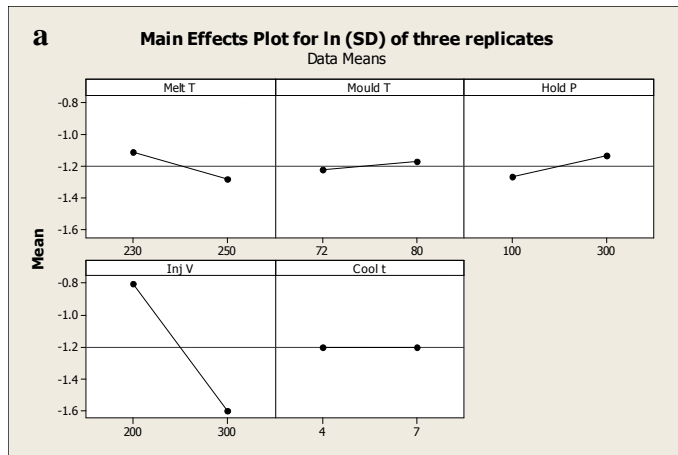
164 The results of the experimental design are presented in the form of main-effect charts and Pareto Charts. The former correlates the factors to the response by taking the average response values for each factor at its high

165 and low levels. The difference, denoted as Δ , is then plotted as a line (linear for 2-level designs) for each factor,
 166 where the slope represents the significance of the factor effect. The bars of the Pareto charts represent a factor, or
 167 interaction between factors, with the bar length reflecting its effect on the response. The effects are calculated by
 168 taking the absolute value of half the difference between averages, i.e. $|\Delta/2|$.

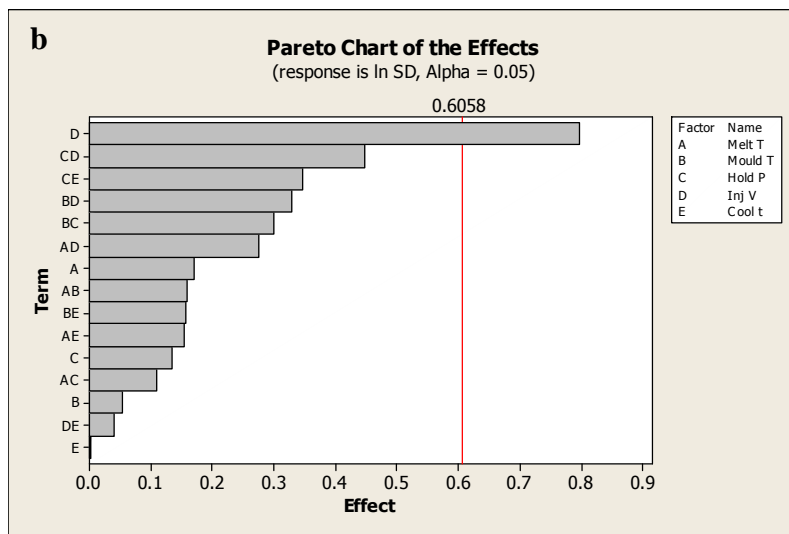
169 Figures 4 and 5 show the main-effect charts and the Pareto Charts for mass and variability, respectively.
 170 The five tested factors are denoted by letters: polymer-melt temperature (A), mould temperature (B), holding
 171 pressure (C), injection speed (D) and cooling time (E).
 172



174
 175 **Fig 4** Analysis result for average part mass (W) (a) Main effect chart and (b) Pareto chart.
 176



177



178

179 **Fig 5** Analysis result for variability (ln SD) (a) Main effect chart and (b) Pareto chart.

180

181 In Figures 4(b) and 5(b) the alpha value represents the risk of finding an effect that does not actually
 182 exists, where an alpha value of 0.05 means confidence limit of 95%. The vertical lines represent the threshold
 183 value beyond which the effect becomes statistically significant within the pre-set confidence limit of alpha. The
 184 position of the line is determined from the t-distribution, where t is the 1-(alpha/2) quantile of the distribution
 185 [24].

186 Polymer parts were replicated following the factor values shown in Table 4. Table 6 presents the data
 187 for the replicated experiments. Each replicated value (R_1 , R_2 and R_3) represents the average from 10 repeats. The
 188 standard deviation is calculated for the three replicates.

189

Part mass [mg]			Average [mg]	SD	Ln (SD)
R1	R2	R3			
88.9	89.0	88.8	88.9	0.10	-2.33

190 Table 6. Results of validation experiments for the desirability function.

191

192 4. Discussion

193 The plots in Figure 4 showed that three influential parameters affect the *magnitude* of the part mass,
194 namely holding pressure followed by melt temperature and injection velocity. No significant interactions were
195 detected

196 Concerning part-mass *variability*, Figure 5 indicated that a single experimental factor was a significant
197 source of mass variation in replicated parts, in this case the injection velocity. Hence, the main significant factor
198 that affected the mass *magnitude* (holding pressure) was not the same as the one that affected mass *variation*
199 (injection velocity).

200 Concerning sample magnitude, the effect of holding pressure on part mass was expected, since
201 increasing the holding pressure allowed for more material to fill the mould cavity before complete freezing and,
202 hence, increasing its mass. The effect of holding pressure on quality filling in Micro-injection moulding was also
203 evident in earlier experiments involving different geometries and polymers [3,4,6]. Increasing melt temperature
204 also affects the filling of the mould cavity, because the viscosity of the polymeric melt decreases with increasing
205 its temperature allowing for better filling of micro-scaled features. This effect of melt temperature also agrees
206 with earlier experiments involving filling microstructures by micro-injection moulding [7,9].

207 Concerning mass variability, increased injection velocity was shown to be a source of decreased
208 variance in the obtained data. This may lie in the fact that increasing velocity leads to an increase in shear rate,
209 which in turn decreases the viscosity of the polymer and allows for better flow inside the mould cavity. This
210 improved flow would result in consistent filling performance from one cycle to another. Previous experiments
211 showed that increasing the injection velocity results in better mould cavity filling for micro-injection moulding
212 [6-9].

213 Figure 5a indicated that increasing injection velocity, the identified significant effect, leads to a
214 decrease in $\ln(SD)$, i.e. a decrease in process *variation*. On the other hand, Figure 4a showed that increasing
215 injection velocity led to a decrease in part mass. This indicates that if a combination of factors is to be found to
216 fulfil both response requirements, i.e. a decrease in variability and an increase in part mass, a compromise would
217 be necessary for the value of injection velocity.

218 The values shown in Table 4 indicate how the desirability function took into consideration the trends
219 discussed above. The holding pressure and melt temperature were set to their upper limits to satisfy the part-
220 mass requirement. For the injection velocity, the selected value was at a point closer to the upper limit (to satisfy
221 variability requirement) but not at the upper limit in order not to violate the velocity requirement for part mass.

222 This compromise in injection velocity affected the predicted responses, as shown in Table 4. The
223 predicted part mass was 88.5 which was slightly lower than the target mass of 88.6 but still within the pre-set
224 tolerance of ± 0.4 mg. The predicted $\ln(SD)$ was -2.0 (corresponding to SD of 0.14) which was lower than the
225 upper limit set to -1.9.

226 Since a compromise had to be made between two responses, the individual desirability d_1 and d_2 of
227 mass and mass-variability, respectively, are less than 1. The overall desirability, D , is therefore calculated to be
228 0.83.

229 Table 6 presents the results of the validation experiments, where average mass was 88.9 mg and SD was
230 shown to be 0.10. Hence, the average part mass was higher than predicted by approximately 0.3%, although it

231 still lay within the pre-set tolerance of ± 0.4 mg, whereas the standard deviation obtained was lower than
232 predicted by the desirability function. Comparing the obtained SD of 0.1 to the original run standard deviations
233 listed in Table 5 shows that it was possible to achieve variability, when optimising for both mass magnitude and
234 mass variability, that fell within the lowest quarter of the original experimental data.

235 The presented experiment showed that designed experiments could be used to optimise process
236 conditions for multiple quality criteria. This is particularly important for industrial environments where quality
237 requirements involve a number of criteria to be met simultaneously. In addition, process variability resulting
238 from process replication was discussed. This is also an important issue in industrial environments, where
239 changing in, e.g. processing shifts, might affect the consistency of the produced parts. The presented statistical
240 technique was implemented to detect the source of such variability, if any, and minimise it.

241 On the other hand, the methodology used has some limitations that need to be taken into consideration
242 when applied. Firstly, the 2-level experimental design assumed the linearity of the factors with respect to the
243 responses. This could not be verified until further experiments involving, for example, 3-level designs could be
244 done, which might require extra time and resources. Secondly, the accuracy of the obtained results depended on
245 the resolution of the selected experimentation design. In the presented case, a fractional factorial design was
246 adequate for the selected responses. In other applications, where more strict measurements and tolerances are
247 required, a higher resolution design might be required. Finally, it should be noted that the desirability function
248 suggests optimised process conditions within the initially specified upper and lower levels of the tested factors.
249 Investigating process performance outside these limits would require extending the experimentation “window”
250 for the required factors beyond the initial values.

251 Future work might focus on using the same technique for more than two responses, including extra
252 responses, such as feature dimensions. In addition, more factors would be included in the experimentation design
253 to investigate other sources of process variability.

254

255 **5. Conclusion**

256 This paper aimed at presenting a methodology for optimising process conditions for multiple quality
257 criteria in μIM . Five processing parameters were investigated for their effect on part mass and mass variation. It
258 was found that holding pressure followed by melt temperature and velocity were significant for part mass, whilst
259 injection velocity alone was significant for mass variation. Hence the main significant effect differed between
260 part mass and mass variation. Further, injection velocity was found to be a parameter of a different effect on the
261 two responses, its effect proportional to mass variation but inversely related to part mass. Hence, for some
262 micro-moulded components, attempting process optimization for part quality alone may lead to an unintended
263 consequence of increases in mass variation.

264 Desirability functions were used to find a combination of factors to meet a specific mass requirement
265 and to minimise variability simultaneously. The function produced a set of values that took into consideration
266 the contradicting effect of injection velocity on both criteria. The suggested conditions were tested, where the
267 average mass deviated by only 0.3% and the variability was better than what was predicted by the functions.
268 Both responses were within the pre-set requirements and the method was shown to be useful in optimising
269 multiple quality criteria.

270 **References**

- 271 [1] Mönkkönen K, Hietala J, Pääkkönen P, Pääkkönen EJ, Kaikuranta T, Pakkanen TT and Jääskeläinen T
272 (2002) Replication of sub-micron features using amorphous thermoplastics. *Polym Eng Sci* 42: 1600-1608
- 273 [2] Shen YK, Yeh SL, Chen SH (2002) Three-dimensional non-Newtonian computations of micro-injection
274 molding with the finite element method. *Int Commun Heat Mass* 29:643-652
- 275 [3] Zhao J, Mayes R, Chen G, Xie H, Chan P (2003) Effects of process parameters on the micro molding
276 process. *Polym Eng Sci* 43:1542-1554
- 277 [4] Zhao J, Mayes R, Chen G, Chan PS, Xiong ZJ (2003) Polymer micromould design and micromoulding
278 process. *Plast Rubber Compos* 32:240-247
- 279 [5] Ong NS, Koh YH (2005) Experimental investigation into micro injection molding of plastic parts. *Mater*
280 *Manuf Process* 20:245-253
- 281 [6] Aufiero R (2005) The effect of process conditions on part quality in microinjection molding. *ANTEC: Proc*
282 *Annual Technical Conf (Boston, MA, 1-5 May 2005):36-40*
- 283 [7] Sha B, Dimov S, Griffiths C, Packianather MS (2007) Micro-injection moulding: factors affecting the
284 achievable aspect ratios. *Int J Adv Manuf Technol* 33:147-156
- 285 [8] Pirskanen J, Immonen J, Kalima V, Pietarinen J, Siitonen S, Kuittinen M, Mönkkönen K, Pakkanen T,
286 Suvanto M, Pääkkönen EJ (2005) Replication of sub-micrometre features using microsystems technology. *Plast*
287 *Rubber Compos* 34:222-226
- 288 [9] Sha B, Dimov S, Griffiths C, Packianather MS (2007) Investigation of micro-injection moulding: factors
289 affecting the replication quality. *J Mater Process Technol* 183:284-296
- 290 [10] Griffiths C, Dimov S, Brousseau EB, Hoyle RT (2007) The effects of tool surface quality in micro-injection
291 moulding. *J Mater Process Tech* 189:418-27
- 292 [11] Tosello G, Gava A, Hansen HN, Lucchetta G (2007) Influence of process parameters on the weld lines of a
293 micro injection molded component. *ANTEC: Proc Annual Technical Conf (Cincinnati, OH, 6-11 May*
294 *2007):2002-2006*
- 295 [12] Dimov S, Menz W (ed.) (2008) *Micro-injection moulding: surface treatment effects on part demoulding.*
296 *4M2008 Proc. 9th - 11th Sept. UK: Whittles Publishing.*
- 297 [13] Jung W-C, Heo Y-M, Shin K-H, Yoon G-S, Chang S-H (2007) An experimatal study on micro injection
298 paramaters. *ANTEC: Proc Annual Technical Conf (Cincinnati, OH, 6-11 May 2007): 638-642*
- 299 [14] Lee B-K, Hwang CJ, Kim DS, Kwon TH (2008) Replication quality of flow-through microfilters in
300 microfluidic lab-on-a-chip for blood typing by microinjection molding. *J Manuf Sci E-T ASME* 130:0210101-
301 0210108
- 302 [15] Xie L, Ziegmann G (2009) Influence of processing parameters on micro injection molded weld line
303 mechanical properties of polypropylene (PP). *Microsyst Technol* 15:1427-1435

- 304 [16] Huang M-S, Li C-J, Yu J-C, Huang Y-M, Hsieh L-C (2009) Robust parameter design of micro-injection
305 molded gears using a LIGA-like fabricated mold insert. *J Mater Process Technol* 209:5690-5701
- 306 [17] Antony J (2003) *Design of experiments for engineers and scientists*. Butterworth-Heinemann: Oxford
- 307 [18] Eriksson L, Johansson N, Kettaneh-Wold N, Wikstrom C, Wold S (2008) *Design of experiments: principles*
308 *and applications*, 3rd edn. Umetrics, Umeå
- 309 [19] Del Vecchio RJ (1997) *Understanding design of experiments: a primer for technologists*. Hanser/Gardner
310 Publications, Cincinnati
- 311 [20] Montgomery DC (2005) *Design and analysis of experiments*, 6th edn. Wiley, Hoboken, Great Britain
- 312 [21] Lahey JP, Launsby RG (1998) *Experimental Design for Injection Molding*. Launsby Consulting, Colorado
313 Springs, CO
- 314 [22] Marson S, Attia UM, Allen DM, Tipler P, Jin T, Hedge J and Alcock JR (2009) Reconfigurable micro-
315 mould for the manufacture of truly 3D polymer microfluidic devices. *Proc CIRP Design Conf* (Cranfield, UK,
316 30-31 March 2009):343-346
- 317 [23] Attia UM, Alcock JR (2009) An evaluation of process-parameter and part-geometry effects on the quality of
318 filling in micro-injection moulding. *Microsys Technol*. Doi: 10.1007/s00542-009-0923-1
- 319 [24] Minitab Inc. Available at: www.minitab.com. Accessed 2009