



University of Warwick institutional repository: <http://go.warwick.ac.uk/wrap>

This paper is made available online in accordance with publisher policies. Please scroll down to view the document itself. Please refer to the repository record for this item and our policy information available from the repository home page for further information.

To see the final version of this paper please visit the publisher's website. Access to the published version may require a subscription.

Author(s): Maj A Hultén, Suketu D Patel, Magnus Westgren, Nikos Papadogiannakis, Anna M Jonsson, Jon Jonasson and Erik Iwarsson

Article Title: On the paternal origin of trisomy 21 Down syndrome

Year of publication: 2010

Link to published article:

<http://dx.doi.org/10.1186/1755-8166-3-4>

Publisher statement: None

RESEARCH

Open Access

On the paternal origin of trisomy 21 Down syndrome

Maj A Hultén^{1*}, Suketu D Patel², Magnus Westgren³, Nikos Papadogiannakis⁴, Anna Maria Jonsson³, Jon Jonasson⁵, Erik Iwarsson⁶

Abstract

Background: Down syndrome (DS), characterized by an extra free chromosome 21 is the most common genetic cause for congenital malformations and learning disability. It is well known that the extra chromosome 21 originates from the mother in more than 90% of cases, the incidence increases with maternal age and there is a high recurrence in young women. In a previous report we have presented data to indicate that maternal trisomy 21 (T21) ovarian mosaicism might provide the major causative factor underlying these patterns of DS inheritance. One important outstanding question concerns the reason why the extra chromosome 21 in DS rarely originates from the father, i.e. in less than 10% of T21 DS cases. We here report data indicating that one reason for this parental sex difference is a very much lower degree of fetal testicular in comparison to ovarian T21 mosaicism.

Results: We used fluorescence in situ hybridisation (FISH) with two chromosome 21-specific probes to determine the copy number of chromosome 21 in fetal testicular cell nuclei from four male fetuses, following termination of pregnancy for a non-medical/social reason at gestational age 14-19 weeks. The cells studied were selected on the basis of their morphology alone, pending immunological specification of the relevant cell types. We could not detect any indication of testicular T21 mosaicism in any of these four male fetuses, when analysing at least 2000 cells per case (range 2038-3971, total 11.842). This result is highly statistically significant ($p < 0.001$) in comparison to the average of 0.54% ovarian T21 mosaicism (range 0.20-0.88%) that we identified in eight female fetuses analysing a total of 12.634 cells, as documented in a previous report in this journal.

Conclusion: Based on these observations we suggest that there is a significant sex difference in degrees of fetal germ line T21 mosaicism. Thus, it would appear that most female fetuses are T21 ovarian mosaics, while in sharp contrast most male fetuses may be either very low grade T21 testicular mosaics or they may be non-mosaics. We further propose that this sex difference in germ line T21 mosaicism may explain the much less frequent paternal origin of T21 DS than maternal. The mechanisms underlying the DS cases, where the extra chromosome 21 does originate from the father, remains unknown and further studies in this respect are required.

Background

It is now just about 50 years since the genetic background for Down syndrome (DS) was identified [1-3] with the most common reason being an extra free chromosome 21, trisomy 21 (T21). Long before then Penrose (as well as some other authors) had suggested that the condition could be caused by a chromosome abnormality; and at the same time he documented a strong maternal age effect with an increasing incidence of DS births to mothers at later reproductive ages [4,5].

Remarkably, a couple of years before the confirmation of the true chromosomal background he also identified a biomarker for germ line and somatic chromosomal mosaicism (the typical dermatoglyphics) in parents and sibs [6]. In the interim it has become clear, primarily by family linkage studies tracing DNA markers along the length of chromosome 21q between parents and children in DS families that the majority of T21 DS cases inherit the extra chromosome 21 from their mother (more than 90%) while in only a minority (less than 10%) the extra chromosome 21 originates from the father [7-11].

* Correspondence: maj.hulten@warwick.ac.uk

¹Warwick Medical School, University of Warwick, UK

Importantly, the underlying mechanism for this parental sex difference still remains unknown. Nevertheless, it has been generally accepted that the main problem is mal-segregation of chromosomes 21 in an original disomy 21 oocyte, a dogma most recently re-iterated by Oliver et al. 2008, 2009, Cheng et al. 2009, Fledel-Alon et al. 2009 and Cheung et al. 2010 [10,12-15]. Thus it is thought that the segregation of chromosomes 21, taking place at ovulation and after fertilisation in women post puberty is particularly vulnerable and prone to non-disjunction dependent on abnormalities in chiasma formation leading to mechanical instability. It is also generally accepted that a number of other genetic and environmental factors may contribute to the variation in chance of having a child with T21 DS (see e.g. Hunt et al. 2008, Jones 2008, Oliver et al. 2008, Allen et al. 2009, Coppèdè 2009, Driscoll et al. 2009, Garcia-Cruz et al. 2009, Ghosh et al. 2009, Hassold and Hunt 2009, Keefe and Liu 2009, Mailhes 2008, Martin 2008, Migliore et al. 2009, Vogt et al. 2009 [8-10,16-26]).

We have recently challenged this dogma by suggesting that the most likely predisposing factor in women for T21 conceptions is instead the common occurrence of fetal ovarian T21 mosaicism and in particular the net result of the behaviour of any such T21 oocytes during development from fetal life until adulthood and maturation for ovulation [27,28]. Based on the observation that all the eight fetuses investigated in this respect, where termination of pregnancy had been performed for a non-medical/social reason, showed ovarian mosaicism with an average of 0.54% T21 cells (range 0.20-0.88%, SD 0.23) we concluded that most females might be low grade T21 mosaics. On the other hand, some exceptional women, who are high grade T21 mosaics, will be predisposed to T21 conceptions already at an early reproductive age and endure an associated high recurrence risk [25,29].

We have here explored the possibility that the low incidence of T21 of paternal origin is correlated to a

lower or insignificant level of germinal/gonadal mosaicism in men in comparison to women. Our data are consistent with this hypothesis. Using fluorescence in situ hybridisation (FISH) with dual chromosome 21-specific probes, we have not found a single T21 cell nucleus in a sample of nearly 12.000 relevant cell nuclei from fetal testes, obtained from four male fetuses where termination of pregnancy had been obtained for a non-medical/social reason. These data are highly statistically different from those obtained in our previous study of more than 12.000 cells by screening eight fetal ovaries, where on average we identified one cell in 200 with T21 without any statistically significant inter-individual variation. We further find it highly unlikely that, akin to the situation in women [27] any rare fetal testicular T21 cells that have remained undetected in our study would accumulate during spermatogenesis post puberty.

Results and Discussion

Using FISH technology with two chromosome 21-specific probes and applying stringent criteria for establishing chromosome 21 copy numbers in the relevant fetal testicular cell nuclei, we could not identify a single T21 cell nucleus in any of these four apparently normal male fetuses in a total cell population of nearly 12.000 (Table 1, Figure 1). We conclude that there is a highly statistically significant sex difference in T21 germ line mosaicism with a much higher incidence in fetal ovaries than testes ($p < 0.001$). In a previous report we documented an average of 0.54% (range 0.20 - 0.88; SD 0.23) of T21 cell nuclei in fetal ovaries from eight female fetuses [28].

The overriding aim of the study has been to investigate the underlying reasons for the intriguing and largely unexplored aspect of the parental origin of T21 DS, i.e. why the extra free chromosome 21 in T21 DS originates from the mother in more than 90% of cases and from the father in less than 10% [7-11]. It would now

Table 1 Results from fluorescent in situ hybridisation (FISH) in fetal testis using two chromosome 21-specific probes (red and green)

Case No/Id	Gest. Age (wks)	No of signals green/red							Total no of scored cells
		2gr/2r	3gr/3r	1gr/1r	2gr/1r	1gr/2r	2gr/3r	3gr/2r	
8787	18	3927	-	35*	1	6	2	-	3971
8795	17	2510	-	5	-	2	-	-	2517
5A	14	3294	1#	11**	3	6	-	1	3316
6A	19	2010	-	3	1	22	-	2	2038
Total		11741	1	54	5	36	2	3	11842

*One of these nuclei contained only one chromosome 18 signal and was interpreted as having either monosomy 21 together with monosomy 18 or being haploid; the remaining showing two chromosome 18 signals were recorded as either false negative monosomy 21 (due to somatic pairing) or true monosomy 21 [91,92].

**These nuclei contained two chromosome 18 signals and were also recorded as false negative monosomy 21 (due to somatic pairing) or true monosomy 21 [91,92].

#This nucleus had 3 × 18 signals and was recorded as being triploid.

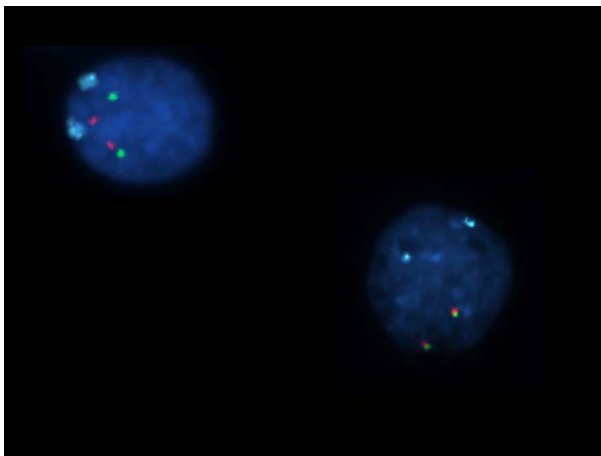


Figure 1 Two fetal testicular cells showing two dual chromosome 21-specific signals (red and green) and two chromosome 18 control probe signals (ice blue), therefore recorded as being normal disomy 21.

appear that before puberty human males hardly harbour any T21 precursor cells able to generate mature 21-disomic sperm cells. Nevertheless, bearing in mind the rare paternal origin, an incidence below one fetal T21 testicular cell per six or seven thousand could still be relevant in this respect.

It is also essential to note that there are a number of Case Reports in the literature, documenting paternal inheritance with either testicular T21 mosaicism identified *per se* or inferred from T21 mosaicism found in somatic tissues, most commonly blood lymphocytes. In addition, there are a number of reports demonstrating a raised incidence of disomy T21 sperm in comparison to controls in fathers of T21 cases. The characteristics of these outstanding cases are summarised in table 2 [30-48]. It has been generally assumed that T21 DS men are infertile, but these reports suggest that at least in cases of T21 mosaicism fertility may be restored. There are also reports of two cases of apparently non-mosaic DS men, who have fathered children [49,50]. T21 DS females, on the other hand, show impaired fertility and premature menopause, but there are many more reports of offspring to apparently non-mosaic DS mothers than DS fathers [51,52].

The data we have here presented raise a number of additional interesting questions, including in particular:

- (1) How does the sex difference in fetal germ line T21 mosaicism come about?
- (2) Is there a correlation with somatic T21 mosaicism?
- (2) What is the reason for the disomy 21 in sperm from normal males?

How does the sex difference in germ line T21 mosaicism come about?

As judged by investigation of the chromosome constitution in individual cells of embryos at the 8 cell stage (by FISH or array-CGH) a large proportion of such embryos are mosaics including a cell line with an aberrant chromosome number [28,53,54]. These embryos have been obtained by donation from patients undergoing IVF treatment, but it is generally thought that the same propensity to embryonic aneuploidy mosaicism is equally common in embryos conceived naturally.

The reasons for this early segregation failure as regards a single or a few chromosomes are not known. Neither is it clear what the impact may be of this phenomenon at later cell divisions during the window from the first to the fifth week of fetal life, preceding the differentiation of the gonads into ovaries and testes. It seems likely, however, that some 'self-correction' can take place [55,56]. Indeed, any occurrence and survival of T21 stem cells at this early stage should not, conceivably, differ in either sex.

The germ cell precursors, the primordial germ cells, are differentiated among the endodermal cells of the yolk sac already at around four weeks of fetal life. They then migrate to the gonadal ridge during the following week. We have previously proposed [27] that the T21 fetal ovarian mosaicism detected at 14-22 weeks has been caused by oogonial mal-segregation starting at around five weeks gestational age, i.e. when the migrating germ cells have reached their final destination in the mesenchyme of the urogenital ridge [57-60]. Tentatively we may suggest that one likely reason for the sexual dimorphism in this respect with a much lower incidence of T21 mosaicism in fetal testes, if any, is a more stringent control of the corresponding cell divisions in fetal testes than in ovaries. In a broader sense, the very same selective mechanism has been invoked to account for the higher proportion of DS mothers than fathers with the typical dermatoglyphic DS patterns [43].

Is there a correlation with somatic T21 mosaicism?

It would be of further interest to ascertain the relation between this newly discovered sex difference in gonadal development and that affecting the soma. If we are right in our assumption that the common fetal ovarian T21 mosaicism identified in our previous study [28] is exclusively due to a less stringent control of chromosome segregation during fetal oogonial development than during the corresponding cell divisions (the gonocytes, the intermediate cells and the pre-spermatogonia) in fetal testes, then we would not expect a correlation with T21 mosaicism in somatic cells. Yet again, further investigations will be required, analysing a number of different types of fetal somatic tissues as well as germ cells to

Table 2 Previous studies indicating paternal T21 germ line mosaicism

No. of DS pregnancies	Percentage T21 Cells (%) Paternal Tissue Sample			Proportion of T21 mosaic fathers (%)	Reference
	Blood	Skin	Testis/Sperm		
				1	Penrose 1965 [40]
2	*				Massimo et al. 1967 [36]
1	23,3				Walker and Ising 1969 [48]
1 (Family 1)	0	7,5	4 (testicular fibroblasts) 14,3 (spermatocytes) 23 (spermatogonia)		Hsu et al. 1971 [34]
1 (Family 2)	6				
1 (Family 3)	4,6	4			
				8	Priest et al. 1973 [41]
1	6,7				Mehes et al. 1973 [37]
1 (Case 9)	6,7				Richards 1974 [42]
1	6				Papp et al. 1974 [39]
1 (Familie T)	11				Domány and Métneki 1976 [32]
1 (Familie K)	15				
				2	Schmidt et al. 1981 [45]
1	3-5				Rodewald et al. 1981 [43]
1 (Family 8)	1				Uchida et al. 1985 [47]
1 (Family 9)	1				
1 (Family 10)	1				
3 (Family A)	0	22			Sachs et al. 1990 [44]
2 (Family RDS-02)	2				Pangalos et al. 1992 [38]
1	2				Casati et al. 1992 [31]
1 (DP-4)			0,75 (sperm)		Blanco et al. 1998 [30]
1 (DP-5)			0,78 (sperm)		
1 (P19)	1,5				Frias et al. 2002 [33]
2 (P24)	1,3				
2 (P25)	1,5				
4/13 embryos	0		6,6 (sperm)		Somprasit et al. 2005 [46]
1 (Family A)	*				Kovaleva et al. 2007 [35]
1 (Family V)	1,4				
1 (Family S)	6,7				

* The proportion of T21 cells was not reported

answer this outstanding question. One other aspect of this question concerns the possibility that T21 mosaicism might be induced by environmental agents including that seen in miscarriages [29,61-66].

It is further well known that some parents of T21 DS children are themselves T21 mosaics in both somatic cell populations and in the germ line. Interestingly, there are in this category of DS parents a larger number of women than men [47,67-69]. In addition there is a sex difference also as regards uniparental disomy (UPD) caused by so-called rescue in an original T21 zygote, this type of mosaicism again being more common in females than males [70-72]. The question then arises if T21 mosaicism

involving both the germ line and the soma might more often be due to rescue during the subsequent cell divisions in an original T21 zygote rather than mal-segregation in an embryo/fetus that was originally normal euploid, containing two chromosomes 21 [73]. If the latter were to apply (and in the absence of somatic crossing-over) all ensuing cases should be isodisomic for two of the three chromosomes 21, making up this somatically acquired aneuploidy. There are a number of studies showing the typical DS dermatoglyphic pattern in parents and sibs substantiating the notion that the trisomic cell line was indeed passed down from a mother to an affected proband [43,45,74-76]. This type of mechanism

would also agree with the observation of Katz-Jaffe et al [77] that it is only the derivatives of initially T21 zygotes, which contribute to the T21 amniocyte population recovered as such.

What is the reason for the disomy 21 in sperm from normal males?

Finally, there are by comparison a large number of publications (to date totalling at least 34), recording rate of disomy 21 in sperm from apparently normal controls. Results vary quite substantially in estimates of disomy 21 in individual sperm samples from 0.00 - 0.44% [78-84]. Some of these discrepancies might be caused by technological problems in FISH analysis. In a previous investigation (on amniocytes) the apparent false positive signals using a single chromosome 21 probe amounted to around 1% of cells analysed [85]. The implication of this consideration is that further studies on spermatozoa obtained from normal control men using two chromosome 21-specific probes will be required before we may be certain what the true incidence is of sperm disomy 21 in the normal population.

At the moment we can only surmise that any such disomy 21 may occur by mal-segregation/nondisjunction of chromosome 21 at pre-meiotic spermatogonial divisions and/or the later meiotic Anaphase I and Anaphase II stages of spermatogenesis in adult men. To our knowledge there are no relevant previous studies investigating chromosome segregation in testicular biopsy samples from normal adult men. In two previous small studies evaluating chromosome number in secondary spermatocytes at the Metaphase II stage, there was no indication of an extra chromosome 21 by analysis of 266 cells at this meiotic stage in testicular biopsy samples from adult men [86,87]. Interestingly, however, a correlation has been found between incidence of disomy 21 in spermatozoa and T21 in blood lymphocytes in both normal fertile controls and men suffering from subfertility [78,80,81].

Conclusion

In this paper we have documented copy number counts of chromosome 21 by fluorescence in situ hybridisation (FISH) on fetal testes obtained from four apparently normal male fetuses following termination of pregnancy for a non-medical/social reason. Applying stringent criteria for identification of T21 in germ cell nuclei we could not detect a single T21 cell in a population of at least 2000 per case. We conclude that there is a substantial sex difference in incidence of fetal germ line T21 mosaicism where most female fetuses may be ovarian T21 mosaics, while males in this study do not show any detectable degree of fetal testicular T21 mosaicism. We propose that this sex difference in germ line T21

mosaicism may explain the much lower paternal origin of T21 DS than maternal. The mechanisms underlying the rare DS cases where the extra chromosome 21 does originate from the father, remains unknown and further studies in this respect are required.

As we have stressed in our previous publication on this issue [27,28] further large-scale studies will be required to find out if our model on germ line mosaicism leading to secondary meiotic non-disjunction constitutes the major source of aneuploid conceptions in the human population, or if other mechanisms might also contribute to this effect.

Materials and methods

All procedures were performed with informed consent and ethical approval from the local ethical committee. Fetal testicular cells were obtained from four fetuses at gestational age 14-19 weeks, following termination of pregnancy for social reasons with all the fetuses having a normal phenotypic appearance. Testes were removed within a few hours post-mortem and placed in L-15 (Leibovitz) medium (Life Technologies) with 0.3% bovine serum albumin (Sigma). Pieces of testes were frozen at -80°C. Parts of the tissue samples were thawed to prepare direct imprints from the cut surface of the fetal ovary [88] and the remaining material processed by micro-spreading [89].

Microscopy slides for FISH analysis were fixed in methanol: acetic acid (3:1 v/v) then washed in 2× standard saline citrate (SSC) and treated with pepsin (0.1 mg/ml) in 0.01 M HCl for 8 min at 37°C. After additional washing in phosphate-buffered saline (PBS), paraformaldehyde (1%) fixation and dehydration through series of alcohol the slides were left to air-dry at room temperature. Hybridisation was performed according to the manufacturers' instructions with two DNA probes positioned near the end of the long arm of chromosome 21 and labelled in SpectrumOrange and SpectrumGreen respectively (Cat No: 32-190002, Abbot Molecular Inc, USA and Cytocell, Cat No. LPT21QG/R, Cytocell Technologies Ltd. UK). A chromosome 18 centromeric probe labelled in SpectrumAqua was added to be able to differentiate between trisomy and triploidy (Cat No: 32-131018, CEP 18 (D18Z1) SpectrumAqua Probe). The DNA probes were mixed and added to the slides followed by denaturation, hybridisation and post-hybridisation washing. After dehydration slides were mounted in glycerol containing 2.3% DABCO (1, 4-diazabicyclo-(2, 2, 2) octane) as antifade and DAPI (4, 6-diamino-2-phenyl-indole) 0.5 mg/ml for nuclear counterstaining.

Fluorescent signals were analyzed using a Zeiss Axioskop 2 microscope equipped with a cooled CCD camera (CoolSnap; Photometrics Ltd, USA) controlled by a Power Macintosh computer. Grey scale images were

captured, pseudocolored and merged using the Smart-Capture 2 software (Digital Scientific Ltd, UK).

In scoring chromosome 21 copy number we focussed attention in particular on the testicular germ cells, i.e. the gonocytes, the intermediate cells and the pre-spermatogonia, identified by their specific morphology [90]. The images of two cell nuclei, showing two dual chromosome 21-specific signals (red and green) and two chromosome 18 control probe signals (ice blue) are illustrated in Fig 1.

Acknowledgements

This project has been supported by grants from BBSRC-BB/C003500/1, The Swedish Research Council and Stockholm County Council. We are grateful to Prof Eric Engel for his valuable contribution and comments on an original draft of this paper.

Author details

¹Warwick Medical School, University of Warwick, UK. ²Department of Biological Sciences, University of Warwick, UK. ³Department of Obstetrics and Gynecology, Karolinska Institutet, Sweden. ⁴Department of Pathology, Karolinska Institutet, Sweden. ⁵Department of Clinical and Experimental Medicine, Linköping University, Sweden. ⁶Department of Molecular Medicine and Surgery, Karolinska Institutet, Sweden.

Authors' contributions

MH designed the study, supervised the practical work and wrote the initial draft of the paper; EI and SP performed the FISH analysis; MW and NP obtained local ethical approval; EI, MW, NP and AMJ obtained the samples. All the authors contributed to and have approved the final version of the manuscript.

Competing interests

The authors declare that they have no competing interests.

Received: 13 January 2010 Accepted: 23 February 2010

Published: 23 February 2010

References

- Gautier M, Harper PS: Fiftieth anniversary of trisomy 21: returning to a discovery. *Hum Genet* 2009, **126**:317-324.
- Jacobs PA, Baikie AG, Court Brown WM, Strong JA: The somatic chromosomes in mongolism. *Lancet* 1959, **1**:710.
- Lejeune J, Turpin R, Gautier M: Mongolism; a chromosomal disease (trisomy). *Bulletin de l'Académie Nationale de Médecine* 1959, **143**:256-265.
- Penrose LS: The relative effect of paternal and maternal age in mongolism. *Journal of Genetics* 1933, **27**:219-224.
- Penrose LS: Maternal Age, Order of Birth and Developmental Abnormalities. *Journal of Mental Science* 1939, **85**:1141-1150.
- Penrose LS: The distal triradius t on the hands of parents and sibs of mongol imbeciles. *Ann Hum Genet* 1954, **19**:10-38.
- Hassold T, Hunt P: Rescuing distal crossovers. *Nature Genetics* 2007, **39**:1187-1188.
- Hunt PA, Hassold TJ: Human female meiosis: what makes a good egg go bad? *Trends in Genetics* 2008, **24**:86-93.
- Jones KT: Meiosis in oocytes: predisposition to aneuploidy and its increased incidence with age. *Human Reproduction Update* 2008, **14**:143-158.
- Oliver TR, Feingold E, Yu K, Cheung V, Tinker S, Yadav-Shah M, Masse N, Sherman SL: New insights into human nondisjunction of chromosome 21 in oocytes. *PLoS Genetics* 2008, **4**:e1000033.
- Petersen MB, Antonarakis SE, Hassold TJ, Freeman SB, Sherman SL, Avramopoulos D, Mikkelsen M: Paternal nondisjunction in trisomy 21: excess of male patients. *Hum Mol Genet* 1993, **2**:1691-1695.
- Cheng EY, Hunt PA, Nalauai-Cecchini TA, Fligner CL, Fujimoto VY, Pasternack TL, Schwartz JM, Steinauer JE, Woodruff TJ, Cherry SM, et al: Meiotic recombination in human oocytes. *PLoS Genet* 2009, **5**:e1000661.
- Cheung VG, Sherman SL, Feingold E: Genetic control of hotspots. *Science* 2010, **327**:791-792.
- Fledel-Alon A, Wilson DJ, Broman K, Wen X, Ober C, Coop G, Przeworski M: Broad-scale recombination patterns underlying proper disjunction in humans. *PLoS Genet* 2009, **5**:e1000658.
- Oliver TR, Bhise A, Feingold E, Tinker S, Masse N, Sherman SL: Investigation of factors associated with paternal nondisjunction of chromosome 21. *Am J Med Genet A* 2009, **149A**:1685-1690.
- Allen EG, Freeman SB, Druschel C, Hobbs CA, O'Leary LA, Romitti PA, Royle MH, Torfs CP, Sherman SL: Maternal age and risk for trisomy 21 assessed by the origin of chromosome nondisjunction: a report from the Atlanta and National Down Syndrome Projects. *Human Genetics* 2009, **125**:41-52.
- Coppède F: The complex relationship between folate/homocysteine metabolism and risk of Down syndrome. *Mutat Res* 2009, **682**:54-70.
- Driscoll DA, Gross S: Clinical practice. Prenatal screening for aneuploidy. *New England Journal of Medicine* 2009, **360**:2556-2562.
- Garcia-Cruz R, Roig I, Caldes MG: Maternal origin of the human aneuploidies. Are homolog synapsis and recombination to blame? Notes (learned) from the underbelly. *Genome Dynamics* 2009, **5**:128-136.
- Ghosh S, Feingold E, Dey SK: Etiology of Down syndrome: Evidence for consistent association among altered meiotic recombination, nondisjunction, and maternal age across populations. *American Journal of Medical Genetics A* 2009, **149A**:1415-1420.
- Hassold T, Hunt P: Maternal age and chromosomally abnormal pregnancies: what we know and what we wish we knew. *Curr Opin Pediatr* 2009, **21**:703-708.
- Keefe DL, Liu L: Telomeres and reproductive aging. *Reprod Fertil Dev* 2009, **21**:10-14.
- Mailhes JB: Faulty spindle checkpoint and cohesion protein activities predispose oocytes to premature chromosome separation and aneuploidy. *Environmental and Molecular Mutagenesis* 2008, **49**:642-658.
- Martin RH: Meiotic errors in human oogenesis and spermatogenesis. *Reproductive Biomedicine Online* 2008, **16**:523-531.
- Migliore L, Migheli F, Coppède F: Susceptibility to aneuploidy in young mothers of Down syndrome children. *ScientificWorldJournal* 2009, **9**:1052-1060.
- Vogt E, Kirsch-Volders M, Parry J, Eichenlaub-Ritter U: Spindle formation, chromosome segregation and the spindle checkpoint in mammalian oocytes and susceptibility to meiotic error. *Mutation Research* 2008, **651**:14-29.
- Hultén MA, Patel S, Jonasson J, Iwarsson E: On the origin of the maternal age effect in trisomy 21 Down syndrome: the Oocyte Mosaicism Selection model. *Reproduction* 2010, **139**:1-9.
- Hultén MA, Patel SD, Tankimanova M, Westgren M, Papadogiannakis N, Jonsson AM, Iwarsson E: On the origin of trisomy 21 Down syndrome. *Molecular Cytogenetics* 2008, **1**:21.
- De Souza E, Halliday J, Chan A, Bower C, Morris JK: Recurrence risks for trisomies 13, 18, and 21. *Am J Med Genet A* 2009, **149A**:2716-2722.
- Blanco J, Gabau E, Gomez D, Baena N, Guitart M, Egozcue J, Vidal F: Chromosome 21 disomy in the spermatozoa of the fathers of children with trisomy 21, in a population with a high prevalence of Down syndrome: increased incidence in cases of paternal origin. *Am J Hum Genet* 1998, **63**:1067-1072.
- Casati A, Giorgi R, Lanza A, Raimondi E, Vagnarelli P, Mondello C, Ghetti P, Piazzi G, Nuzzo F: Trisomy 21 mosaicism in two subjects from two generations. *Ann Genet* 1992, **35**:245-250.
- Domány Z, Météneki J: Mosaicism-trisomy in fathers of two children with Down's syndrome. *Acta Paediatr Acad Sci Hung* 1976, **17**:177-181.
- Frias S, Ramos S, Molina B, del Castillo V, Mayen DG: Detection of mosaicism in lymphocytes of parents of free trisomy 21 offspring. *Mutat Res* 2002, **520**:25-37.
- Hsu LY, Gertner M, Leiter E, Hirschhorn K: Paternal trisomy 21 mosaicism and Down's syndrome. *Am J Hum Genet* 1971, **23**:592-601.
- Kovaleva NV, Tahmasebi-Hesari M: Detection of gonadal mosaicism in parents of offspring with Down syndrome. *Cytol Genet* 2007, **41**:292-297.
- Massimo L, Borrone C, Vianello MG, Dagna-Bricarelli F: Familial Immune Defects. *The Lancet* 1967, **289**:108.
- Mehes K: Paternal trisomy 21 mosaicism and Down's anomaly. *Humangenetik* 1973, **17**:297-300.

38. Pangalos CG, Talbot CC Jr, Lewis JG, Adelsberger PA, Petersen MB, Serre JL, Rethore MO, de Blois MC, Parent P, Schinzel AA, et al: **DNA polymorphism analysis in families with recurrence of free trisomy 21.** *Am J Hum Genet* 1992, **51**:1015-1027.
39. Papp Z, Csecsei K, Skapinyecz J, Dolhay B: **Paternal normal-trisomy 21 mosaicism as an indication for amniocentesis.** *Clin Genet* 1974, **6**:192-194.
40. Penrose LS: **Dermatoglyphics in mosaic mongolism and allied conditions.** *Genetics today* Oxford: Pergamon Press; Geerts SJ 1965, **3**:973-980.
41. Priest JH, Verhulst C, Sirkin S: **Parental dermatoglyphics in Down's syndrome. A ten-year study.** *J Med Genet* 1973, **10**:328-332.
42. Richards BW: **Investigation of 142 mosaic mongols and mosaic parents of mongols; cytogenetic analysis and maternal age at birth.** *J Ment Defic Res* 1974, **18**:199-208.
43. Rodewald A, Zang KD, Zankl H, Zankl M: **Dermatoglyphic peculiarities in Down's syndrome detection of mosaicism and balanced translocation carriers.** *Hum Genet Suppl* 1981, **2**:41-56.
44. Sachs ES, Jahoda MG, Los FJ, Pijpers L, Wladimiroff JW: **Trisomy 21 mosaicism in gonads with unexpectedly high recurrence risks.** *Am J Med Genet Suppl* 1990, **7**:186-188.
45. Schmidt R, Dar H, Nitowsky HM: **Dermatoglyphic and cytogenetic studies in parents of children with trisomy 21.** *Clin Genet* 1981, **20**:203-210.
46. Somprasit C, Aguinaga M, Cisneros PL, Torsky S, Carson SA, Buster JE, Amato P, McAdoo SL, Simpson JL, Bischoff FZ: **Paternal gonadal mosaicism detected in a couple with recurrent abortions undergoing PGD: FISH analysis of sperm nuclei proves valuable.** *Reprod Biomed Online* 2004, **9**:225-230.
47. Uchida IA, Freeman VC: **Trisomy 21 Down syndrome. Parental mosaicism.** *Hum Genet* 1985, **70**:246-248.
48. Walker FA, Ising R: **Mosaic Down's syndrome in a father and daughter.** *Lancet* 1969, **293**:374.
49. Pradhan M, Dalal A, Khan F, Agrawal S: **Fertility in men with Down syndrome: a case report.** *Fertil Steril* 2006, **86**:e1761-1763.
50. Sheridan R, Llerena J Jr, Matkins S, Debenham P, Cawood A, Bobrow M: **Fertility in a male with trisomy 21.** *J Med Genet* 1989, **26**:294-298.
51. Bovicelli L, Orsini LF, Rizzo N, Montacuti V, Bacchetta M: **Reproduction in Down syndrome.** *Obstet Gynecol* 1982, **59**:135-175.
52. Shobha Rani A, Jyothi A, Reddy PP, Reddy OS: **Reproduction in Down's syndrome.** *Int J Gynaecol Obstet* 1990, **31**:81-86.
53. Hultén MA, Smith E, Delhanty JDA: **Errors in Chromosome Segregation During Oogenesis and Early Embryogenesis.** *Reproductive Endocrinology and Infertility: Integrating Modern Clinical and Laboratory Practice* Totowa, NJ: Springer Science + Business Media; Carrell DT, Peterson CM 2010.
54. Vanneste E, Voet T, Le Caignec C, Ampe M, Konings P, Melotte C, Debrock S, Amyere M, Vikkula M, Schuit F, et al: **Chromosome instability is common in human cleavage-stage embryos.** *Nature Medicine* 2009, **15**:577-583.
55. Barbash-Hazan S, Frumkin T, Malcov M, Yaron Y, Cohen T, Azem F, Amit A, Ben-Yosef D: **Preimplantation aneuploid embryos undergo self-correction in correlation with their developmental potential.** *Fertil Steril* 2009, **92**:890-896.
56. Iourov IY, Vorsanova SG, Yurov YB: **Intercellular Genomic (Chromosomal) Variations Resulting in Somatic Mosaicism: Mechanisms and Consequences.** *Curr Genomics* 2006, **7**:435-446.
57. Bendsen E, Byskov AG, Andersen CV, Westergaard LG: **Number of germ cells and somatic cells in human fetal ovaries during the first weeks after sex differentiation.** *Hum Reprod* 2006, **21**:30-35.
58. Kocer A, Reichmann J, Best D, Adams IR: **Germ cell sex determination in mammals.** *Mol Hum Reprod* 2009, **15**:205-213.
59. Pereda J, Zorn T, Soto-Suazo M: **Migration of human and mouse primordial germ cells and colonization of the developing ovary: an ultrastructural and cytochemical study.** *Microsc Res Tech* 2006, **69**:386-395.
60. Söder O: **Sexual dimorphism of gonadal development.** *Best Pract Res Clin Endocrinol Metab* 2007, **21**:381-391.
61. McNally RJ, Rankin J, Shirley MD, Rushton SP, Pless-Mulloli T: **Space-time analysis of Down syndrome: results consistent with transient pre-disposing contagious agent.** *Int J Epidemiol* 2008, **37**:1169-1179.
62. Morris JK: **Commentary: Clustering in Down syndrome.** *Int J Epidemiol* 2008, **37**:1179-1180.
63. Vorsanova SG, Iourov IY, Beresheva AK, Demidova IA, Monakhov VV, Kravets VS, Bartseva OB, Goyko EA, Soloviev IV, Yurov YB: **Non-disjunction of chromosome 21, alphoid DNA variation, and sociogenetic features of Down syndrome.** *Tsitol Genet* 2005, **39**:30-36.
64. Vorsanova SG, Kolotii AD, Iourov IY, Monakhov VV, Kirillova EA, Soloviev IV, Yurov YB: **Evidence for high frequency of chromosomal mosaicism in spontaneous abortions revealed by interphase FISH analysis.** *J Histochem Cytochem* 2005, **53**:375-380.
65. Vorsanova SG, Yurov YB, Iourov IY: **Maternal smoking as a cause of mosaic aneuploidy in spontaneous abortions.** *Med Hypotheses* 2008, **71**:607.
66. Yurov YB, Iourov IY, Vorsanova SG, Liehr T, Kolotii AD, Kutsev SI, Pellestor F, Beresheva AK, Demidova IA, Kravets VS, et al: **Aneuploidy and confined chromosomal mosaicism in the developing human brain.** *PLoS One* 2007, **2**:e558.
67. Hook EB, Cross PK, Mutton DE: **Female predominance (low sex ratio) in 47,+21 mosaics.** *Am J Med Genet* 1999, **84**:316-319.
68. Huether CA, Martin RL, Stoppelman SM, D'Souza S, Bishop JK, Torfs CP, Lorey F, May KM, Hanna JS, Baird PA, Kelly JC: **Sex ratios in fetuses and liveborn infants with autosomal aneuploidy.** *Am J Med Genet* 1996, **63**:492-500.
69. Mutton D, Alberman E, Hook EB: **Cytogenetic and epidemiological findings in Down syndrome, England and Wales 1989 to 1993. National Down Syndrome Cytogenetic Register and the Association of Clinical Cytogeneticists.** *J Med Genet* 1996, **33**:387-394.
70. Engel E: **A fascination with chromosome rescue in uniparental disomy: Mendelian recessive outlaws and imprinting copyrights infringements.** *Eur J Hum Genet* 2006, **14**:1158-1169.
71. Engel E, Antonarakis SE: *Genomic Imprinting and Uniparental Disomy in Medicine. Clinical and Molecular Aspects* New York: Wiley-Liss Inc 2002.
72. Kotzot D: **Complex and segmental uniparental disomy updated.** *J Med Genet* 2008, **45**:545-556.
73. Richards BW: **Observations on mosaic parents of mongol propositi.** *Journal of Mental Deficiency Research* 1970, **14**:342-346.
74. Aymé S, Lippman-Hand A: **Maternal-age effect in aneuploidy: does altered embryonic selection play a role?** *American Journal of Human Genetics* 1982, **34**:558-565.
75. Katznelson MB, Bejerano M, Yakovenko K, Kobylansky E: **Relationship between genetic anomalies of different levels and deviations in dermatoglyphic traits. Part 4: Dermatoglyphic peculiarities of males and females with Down syndrome. Family study.** *Anthropol Anz* 1999, **57**:193-255.
76. Loesch D: **Dermatoglyphic studies in the parents of trisomy 21 children I. Distribution of dermatoglyphic discriminants.** *Hum Hered* 1981, **31**:201-207.
77. Katz-Jaffe MG, Trounson AO, Cram DS: **Mitotic errors in chromosome 21 of human preimplantation embryos are associated with non-viability.** *Mol Hum Reprod* 2004, **10**:143-147.
78. Gazvani MR, Wilson ED, Richmond DH, Howard PJ, Kingsland CR, Lewis-Jones DI: **Role of mitotic control in spermatogenesis.** *Fertil Steril* 2000, **74**:251-256.
79. Jacobs PA: **The chromosome complement of human gametes.** *Oxf Rev Reprod Biol* 1992, **14**:47-72.
80. Rubes J, Vozdova M, Oracova E, Perreault SD: **Individual variation in the frequency of sperm aneuploidy in humans.** *Cytogenet Genome Res* 2005, **111**:229-236.
81. Rubes J, Vozdova M, Robbins WA, Rezacova O, Perreault SD, Wyrobek AJ: **Stable variants of sperm aneuploidy among healthy men show associations between germinal and somatic aneuploidy.** *Am J Hum Genet* 2002, **70**:1507-1519.
82. Soares SR, Templado C, Blanco J, Egozcue J, Vidal F: **Numerical chromosome abnormalities in the spermatozoa of the fathers of children with trisomy 21 of paternal origin: generalised tendency to meiotic non-disjunction.** *Hum Genet* 2001, **108**:134-139.
83. Tempest HG, Ko E, Rademaker A, Chan P, Robaire B, Martin RH: **Intra-individual and inter-individual variations in sperm aneuploidy frequencies in normal men.** *Fertil Steril* 2009, **91**:185-192.
84. Young SS, Eskenazi B, Marchetti FM, Block G, Wyrobek AJ: **The association of folate, zinc and antioxidant intake with sperm aneuploidy in healthy non-smoking men.** *Hum Reprod* 2008, **23**:1014-1022.
85. Hultén MA, Dhanjal S, Pertl B: **Rapid and simple prenatal diagnosis of common chromosome disorders: advantages and disadvantages of the molecular methods FISH and QF-PCR.** *Reproduction* 2003, **126**:279-297.

86. Laurie DA, Firkett CL, Hulten MA: **A direct cytogenetic technique for assessing the rate of first meiotic non-disjunction in the human male by the analysis of cells at metaphase II.** *Ann Hum Genet* 1985, **49**:23-29.
87. Uroz L, Liehr T, Mrasek K, Templado C: **Centromere-specific multicolour fluorescence in situ hybridization on human spermatocyte I and II metaphases.** *Hum Reprod* 2009, **24**:2029-2033.
88. Papadogiannakis N, Iwarsson E, Taimi T, Zaphiropoulos PG, Westgren M: **Lack of aneuploidy for chromosomes 15, 16, and 18 in placentas from small-for-gestational-age liveborn infants.** *Am J Obstet Gynecol* 2008, **198**: e231, e231-237.
89. Hultén MA, Barlow AL, Tease C: **Meiotic studies in humans.** *Human Cytogenetics A Practical Approach* New York: Oxford University Press; 2001, 211-236.
90. Pauls K, Schorle H, Jeske W, Brehm R, Steger K, Wernert N, Buttner R, Zhou H: **Spatial expression of germ cell markers during maturation of human fetal male gonads: an immunohistochemical study.** *Hum Reprod* 2006, **21**:397-404.
91. Arnoldus EP, Peters AC, Bots GT, Raap AK, Ploeg van der M: **Somatic pairing of chromosome 1 centromeres in interphase nuclei of human cerebellum.** *Hum Genet* 1989, **83**:231-234.
92. Iourov IY, Soloviev IV, Vorsanova SG, Monakhov VV, Yurov YB: **An approach for quantitative assessment of fluorescence in situ hybridization (FISH) signals for applied human molecular cytogenetics.** *J Histochem Cytochem* 2005, **53**:401-408.

doi:10.1186/1755-8166-3-4

Cite this article as: Hultén *et al.*: On the paternal origin of trisomy 21 Down syndrome. *Molecular Cytogenetics* 2010 **3**:4.

**Submit your next manuscript to BioMed Central
and take full advantage of:**

- Convenient online submission
- Thorough peer review
- No space constraints or color figure charges
- Immediate publication on acceptance
- Inclusion in PubMed, CAS, Scopus and Google Scholar
- Research which is freely available for redistribution

Submit your manuscript at
www.biomedcentral.com/submit

