

Technical University of Denmark



## Spatiotemporal interpolation of elevation changes derived from satellite altimetry for Jakobshavn Isbræ, Greenland

Hurkmans, R.T.W.L.; Bamber, J.L.; Sørensen, Louise Sandberg; Joughin, I.R.; Davis, C.H.; Krabill, W.B.

*Published in:*  
Journal of Geophysical Research

*Link to article, DOI:*  
[10.1029/2011JF002072](https://doi.org/10.1029/2011JF002072)

*Publication date:*  
2012

[Link back to DTU Orbit](#)

*Citation (APA):*  
Hurkmans, R. T. W. L., Bamber, J. L., Sørensen, L. S., Joughin, I. R., Davis, C. H., & Krabill, W. B. (2012). Spatiotemporal interpolation of elevation changes derived from satellite altimetry for Jakobshavn Isbræ, Greenland. *Journal of Geophysical Research*, 117, F03001. DOI: 10.1029/2011JF002072

## DTU Library

Technical Information Center of Denmark

---

### General rights

Copyright and moral rights for the publications made accessible in the public portal are retained by the authors and/or other copyright owners and it is a condition of accessing publications that users recognise and abide by the legal requirements associated with these rights.

- Users may download and print one copy of any publication from the public portal for the purpose of private study or research.
- You may not further distribute the material or use it for any profit-making activity or commercial gain
- You may freely distribute the URL identifying the publication in the public portal

If you believe that this document breaches copyright please contact us providing details, and we will remove access to the work immediately and investigate your claim.

# Spatio-temporal interpolation of elevation changes derived from satellite altimetry for Jakobshavn Isbræ, Greenland

R.T.W.L. Hurkmans,<sup>1</sup> J.L. Bamber,<sup>1</sup> L.S. Sørensen,<sup>2</sup> I.R. Joughin,<sup>3</sup> C.H.

Davis,<sup>4</sup> W.B. Krabill<sup>5</sup>

---

R.T.W.L. Hurkmans and J.L. Bamber, Bristol Glaciology Centre, School of Geographical Sciences, University of Bristol, Bristol, UK. (ruud.hurkmans@bristol.ac.uk)

L.S. Sørensen, Geodynamics Department, DTU Space, Copenhagen, Denmark.

I.R. Joughin, Polar Science Center, University of Washington, Seattle, WA, USA.

C.H. Davis, Center for Geospatial Intelligence, University of Missouri, Columbia, MO, USA.

W.B. Krabill, NASA Goddard Space Flight Center, Greenbelt, MD, USA.

<sup>1</sup>Bristol Glaciology Centre, School of Geographical Sciences, University of Bristol, Bristol, UK

<sup>2</sup>Geodynamics Department, DTU Space, Copenhagen, Denmark

<sup>3</sup>Polar Science Center, University of Washington, Seattle, WA, USA

<sup>4</sup>Center for Geospatial Intelligence, University of Missouri, Columbia, MO, USA

**Abstract.** Estimation of ice sheet mass balance from satellite altimetry requires interpolation of point-scale elevation change ( $dH/dt$ ) data over the area of interest. The largest  $dH/dt$  values occur over narrow, fast-flowing outlet glaciers, where data coverage of current satellite altimetry is poorest. In those areas, straightforward interpolation of data is unlikely to reflect the true patterns of  $dH/dt$ . Here, four interpolation methods are compared and evaluated over Jakobshavn Isbræ, an outlet glacier for which widespread airborne validation data are available from NASA's Airborne Topographic Mapper (ATM). The four methods are ordinary kriging (OK), kriging with external drift (KED), where the spatial pattern of surface velocity is used as a proxy for that of  $dH/dt$ , and their spatio-temporal equivalents (ST-OK and ST-KED). KED assumes a linear relationship between spatial gradients of velocity and  $dH/dt$ , which is confirmed for both negative (Pearson's correlation  $\rho < -0.85$ ) and, to a lesser degree, positive ( $\rho=0.73$ )  $dH/dt$  values. When compared to ATM data, KED and ST-KED yield more realistic spatial patterns and higher thinning rates (over  $20 \text{ m yr}^{-1}$  as opposed to  $7 \text{ m yr}^{-1}$  for OK). Spatio-temporal kriging smooths inter-annual variability and improves interpolation in periods with sparse data coverage and we conclude, therefore, that ST-KED produces the best results. Using this method increases

---

<sup>5</sup>NASA Goddard Space Flight Center,

Greenbelt, MD, USA

volume loss estimates from Jakobshavn Isbræ by up to 20% compared to those obtained by OK. The proposed interpolation method will improve ice sheet mass balance reconstructions from existing and past satellite altimeter data sets, with generally poor sampling of outlet glaciers.

## 1. Introduction

Three main approaches exist to estimate the mass balance of the Greenland and Antarctic ice sheets, each with their own errors and uncertainties. Firstly, mass balance may be estimated from the difference between the net surface mass balance and ice flux through a gate [*Rignot and Kanagaratnam, 2006; Rignot et al., 2008b*]. Secondly, variations in the gravity field can be used to estimate mass changes of the ice sheets using the GRACE satellites [Gravity Recovery and Climate Experiment; *Wouters et al., 2008; Luthcke et al., 2006*]. Thirdly, mass changes can be estimated from elevation change ( $dH/dt$ ) measurements using radar or laser altimetry [e.g. *Zwally et al., 2005, 2011; Sørensen et al., 2011*].

To obtain an estimate of volume change, point-scale  $dH/dt$  measurements need to be integrated over the basin and thus require spatial interpolation. A method that is usually employed to achieve this is ordinary kriging [OK; e.g. *Zwally et al., 2005; Bamber et al., 2001*]. Typically, the largest  $dH/dt$  values occur in the relatively narrow parts of outlet glaciers with high velocities [*Krabill et al., 2004; Joughin et al., 2008a; Pritchard et al., 2009*]. With conventional satellite radar altimetry, however, it is difficult to obtain sufficient measurements in these areas: because the radar beam width is about 20 km [*Thomas et al., 2008*], narrow outlet glaciers (such as Jakobshavn Isbræ) cannot be adequately sampled, and steep slopes cause a displacement of the signal, as the return signal does not originate from nadir but from the highest point within the radar footprint [e.g., *Brenner et al., 2007*]. While this slope-induced error can be corrected for to some degree, small-scale relief can result in noisy height estimates and loss of lock

[*Bamber and Gomez-Dans, 2005*]. Another issue is the spatial coverage; the horizontal resolution is bounded by either cross-over points (exact locations where ascending and descending satellite tracks cross each other) or across-track spacing [*Thomas et al., 2008*]. These problems degrade performance in the areas where the largest changes occur: the relatively narrow outlet glaciers along the ice sheet margin. For future studies, the recent launch of CryoSat-2 may partially alleviate these problems due to its higher resolution and latitudinal coverage (up to 88°N). Satellite laser altimetry can give an increased accuracy over outlet glaciers, but the laser instrument on the ICESat satellite (GLAS; the Geoscience Laser Altimeter System) suffered from operational problems [*Abshire et al., 2005*], resulting in reduced spatial and temporal resolution. Stereo photogrammetry can be used to determine volume change locally [e.g., *Stearns and Hamilton, 2007*], but its accuracy and applicability limits it to marginal areas with adequate contrast and large elevation differences. It is not suitable for ice sheet wide volume change estimation.

Thus, given the limited number of valid  $dH/dt$  measurements in the high-velocity parts of the ice sheet (greater than 100 m yr<sup>-1</sup>), it is unlikely that an interpolation obtained by, for example, OK will reflect the true spatial pattern of  $dH/dt$ . The similarity of the spatial patterns of surface ice velocity and  $dH/dt$  [e.g., *Rignot et al., 2008a; Joughin et al., 2008b; Pritchard et al., 2009*] suggests that velocity, which is available from radar interferometry for nearly all of the major outlet glaciers [*Joughin et al., 2008a; Howat et al., 2007*], contains information that can aid the interpolation. In this paper, we employ an alternative interpolation method, kriging with external drift (KED), that takes into account auxiliary data [*Deutsch and Journel, 1992*]. KED has been applied in geo-sciences in several

studies: for example by *Snepvangers et al.* [2003] in interpolation of soil moisture values, where net precipitation was used as the external drift, or by *Schuurmans et al.* [2007] for combining precipitation measurements from radar with rain gauges. An additional extension to the interpolation method is the use of spatio-temporal kriging, which handles irregular sampling by interpolating both in space and time [*Snepvangers et al.*, 2003; *Kyr-iakidis and Journel*, 1999; *De Cesare et al.*, 2001]. The resulting interpolation technique, spatio-temporal kriging with external drift (ST-KED), has two advantages compared to OK: firstly, it makes use of more measurements because it samples the past and the future with respect to the period of interest; and secondly, velocity gradients constrain the interpolation on fast-flowing regions where there are no, or limited, data.

As a case-study area to test whether ST-KED indeed improves the estimation of volume change, we use Jakobshavn Isbræ, Greenland's most active outlet glacier. Jakobshavn Isbræ has been the subject of many investigations regarding its recent acceleration and thinning [*Joughin et al.*, 2004; *Thomas et al.*, 2003; *Motyka et al.*, 2010, 2011; *Luckman and Murray*, 2005], and has been densely surveyed by airborne laser altimetry [*Abdalati and Krabill*, 1999; *Krabill et al.*, 2000, 2004]. The measurements by the ATM, mostly located in the high-velocity region, are ideal for independently testing our approach. Using these validation data, we compare the interpolated patterns of  $dH/dt$ , thinning rates and errors.

## 2. Study area and data

### 2.1. Study area: Jakobshavn Isbræ

Jakobshavn Isbræ is Greenland's largest outlet glacier, draining about 5.4% of the ice sheet [92,080 km<sup>2</sup>; *Motyka et al.*, 2011]. Its location and size are shown in the inset of Figure 4. The glacier converges into a 4 km wide, deep (over 1000 m below sea level) trunk, flowing into a deep fjord where, until recently, it formed a floating ice tongue of about 15 km length. Between 1850 and 1950, the position of the calving front of this tongue retreated some 25 km along the fjord. After 1950, the calving front was more or less stable until about 1998 [*Thomas et al.*, 2009; *Csatho et al.*, 2008]. After 1998, rapid melting of the floating ice tongue caused a retreat of the calving front, until it finally disintegrated in 2003 [*Joughin et al.*, 2004]. This collapse was attributed to enhanced inflow of warm water into the fjord and subsequent increased basal melting of the tongue [*Holland et al.*, 2008; *Motyka et al.*, 2011].

Along with the retreating calving front, measurements of surface velocity [*Joughin et al.*, 2004, 2008a] and  $dH/dt$  [*Krabill et al.*, 2004] indicated acceleration and thinning of the high-velocity part of the glacier. While this area had been thickening prior to 1997 [*Abdalati et al.*, 2001; *Thomas et al.*, 2003], it has been thinning since then, with rates in excess of 15 m yr<sup>-1</sup> near the grounding line. Over the same period, *Joughin et al.* [2004] measured ice velocity, averaged over some 20 locations in the high-speed area of Jakobshavn Isbræ. Between 1985 and 1992, velocities were slowing down from 6.7 km yr<sup>-1</sup> to 5.7 km yr<sup>-1</sup>. After 1999, however, the glacier has been speeding up, to 9.4 km yr<sup>-1</sup> in 2000 and 12.6 km yr<sup>-1</sup> in 2003 [*Joughin et al.*, 2004].

## 2.2. Data



As input for our interpolation, we employ data from two spaceborne altimeters: i) the RA-1 (Radar Altimeter) on ERS-2 (European Remote Sensing satellite); and ii) the laser altimeter (GLAS) on ICESat. In addition, we use data from an airborne laser altimeter (NASA's ATM) for validation purposes. ESA's ERS-2 was launched in 1995 and has been in an orbit at an altitude of 780 kilometer with a 35-day repeat cycle until September 2011 when it was decommissioned. In this study, ERS-2 data between 1995 and 2003 have been used.  $dH/dt$  values derived from ERS-2 are based on cross-over points that were averaged into clusters [e.g. *Li and Davis*, 2008], shown as blue triangles in Figure 4. ICESat was launched in 2003 and carried a laser altimeter system (GLAS). Due to rapid laser degradation, the system was switched on for only two to three campaigns of 33 days per year [*Abshire et al.*, 2005]. The spacing between tracks is therefore relatively large, about 20 km for Jakobshavn Isbræ (Figure 4). Along-track spacing is approximately 172 m, with a footprint size of about 60 meters [*Zwally et al.*, 2002]. We use ICESat data (release 31) from 14 epochs: from February/March 2003 until February/March 2008 [*Zwally et al.*, 2010]. The same preprocessing was carried out as in *Sørensen et al.* [2011]. ICESat repeat tracks are shown in red in Figure 4. ATM is also a laser altimeter, but airborne. Since 1993, repeated flights have been performed over Greenland [*Krabill et al.*, 2000, 2004], with sampling over parts of Jakobshavn Isbræ [*Abdalati and Krabill*, 1999] shown in Figure 4. ATM measures ice-surface elevation with an accuracy of 10 cm or better [*Krabill et al.*, 2000], within a swath of 150-200 m at a typical aircraft altitude of 500 m [*Thomas et al.*, 2009]. Here, a processed version of the data was used, in which footprints (with size 1-3 m) were resampled to 70 m overlapping "platelets", one on each

side of the aircraft [*Thomas et al.*, 2009].

Ice velocity is derived from a combination of interferometric synthetic aperture radar (InSAR) and speckle tracking [*Joughin*, 2002]. In the winter of 2000/2001, Canada's RADARSAT-1 acquired near-complete coverage of the Greenland ice sheet. From 2005/2006 this coverage was repeated almost annually [*Joughin et al.*, 2010]. We use a mosaic of RADARSAT-1 derived velocities averaged over the years 2000, and 2005–2008. To define the outline of the drainage basin of Jakobshavn Isbræ, finally, the delineation of *Rignot and Kanagaratnam* [2006] is followed.

### 3. Methodology

#### 3.1. Obtaining $dH/dt$ values

To be able to combine all datasets described before, we define a grid in polar-stereographic projection (central latitude  $71^\circ\text{N}$ ; central longitude  $39^\circ\text{W}$ ), at a 1 km resolution. The processing approach for laser altimetry (ATM, ICESat) differs from that for radar altimetry. The radar altimetry data were already preprocessed as cross-over clusters, but not corrected for the slope-induced error, i.e., the fact that the return signal does not come from the point at nadir, but from the point within the rather large footprint that is closest to the antenna [e.g., *Brenner et al.*, 1983]. Near the ice sheet margin, the difference between these points can be considerable (about 14 km for a 1 degree slope). This is corrected for using slope and aspect from a digital elevation model [DEM, *Bamber et al.*, 2001] as described in *Hurkmans et al.* [2012].

For ICESat, several approaches have been used to extract  $dH/dt$  [Howat *et al.*, 2008; Pritchard *et al.*, 2009; Slobbe *et al.*, 2008]. Because ICESat tracks almost never exactly repeat, a regression approach can be used in which slope (both across-track and along-track) and  $dH/dt$  are simultaneously solved for. To estimate  $dH/dt$  from ATM, footprints are resampled into 70m platelets as mentioned in Section 2.2, and elevations at platelet centres of overlapping flightlines are compared [Krabill *et al.*, 2004; Thomas *et al.*, 2009]. However, in all these studies only one average  $dH/dt$  was obtained, where temporal resolution was sacrificed in a way to increase spatial coverage [Pritchard *et al.*, 2009]. Because we are interested in the change of thinning or thickening rates through time, we need a higher temporal resolution as well.

First, for each repeat track (or flightline for ATM), we average all footprint elevations within a given 1 km grid cell. We again use slope and aspect from a DEM [Bamber *et al.*, 2001] to project all elevation footprints (for ICESat) or platelet centers (for ATM) towards the center of the pixel. This approach is likely to be less accurate than a method that estimates slope directly from the data as was done in, for example, Pritchard *et al.* [2009]. However, we expect this to add noise to the results rather than a bias. Because we employ rather strict data culling criteria (see below), we do not believe our results are significantly influenced by this. Time-averaged  $dH/dt$  values are also calculated for each satellite (using regression including all available data). For ICESat, the spatial pattern of overall  $dH/dt$  for the entire Greenland ice sheet (2003–2007) compares very well with those reported by Pritchard *et al.* [2009] and Sørensen *et al.* [2011] (not shown).

For both radar and laser altimetry, we then calculate annual values for  $dH/dt$  at each grid cell for every year between 1997 and 2008 using linear regression. For each year, data are used from a three-year period centered on the year under consideration, because the temporal sampling, especially before 2003, is too poor to allow reliable  $dH/dt$  calculations within single years. Regression is only carried out in grid cells where i) data from at least five overpasses are available that ii) span at least one year and iii) have a standard error on the resulting  $dH/dt$  rate of less than  $0.40 \text{ m yr}^{-1}$ . The standard error on the regression coefficient  $SE_{coef}$  (in this case  $dH/dt$  rate) is calculated by:

$$SE_{coef} = \sqrt{\frac{\sum e_i^2 / (n - 2)}{\sum (x_i - \bar{x})^2}} \quad (1)$$

where  $e$  is the vector of residuals,  $n$  is the sample size, and  $x$  is the input with mean  $\bar{x}$ . It should be noted that this standard error is not equivalent to measurement error, but takes into account sample size, and variance of both input and residuals of the regression as well. The threshold is selected by trial and error to avoid a noisy spatial pattern of points that are close together and opposite in sign, usually because the regression was based on a small subset of overpasses. In addition, prior to regression, measurements that are outside the range of average plus or minus two standard deviations (based on the entire available time series) are removed. The number of data points that was removed in the culling process is variable between datasets and time periods. For ICESat, typically about 25% of data points are removed, mostly because less than five overpasses were available or the spanned time range was too short. Figure shows estimated  $dH/dt$  for different periods, based on linear regression. Figure shows the associated standard errors of the  $dH/dt$ .

### 3.2. Kriging theory

A widely used interpolation method in geosciences is kriging, sometimes referred to as “optimal interpolation”. It is a form of linear regression minimizing an estimation variance [Deutsch and Journel, 1992], of which several varieties exist. In the following, the basic theory and the differences between the main types are briefly explained. For more information, see for example Deutsch and Journel [1992]; Herzfeld et al. [2000]; Hengl et al. [2003].

In kriging, a value  $Z(x_0)$  at an unsampled location can be estimated from  $N$  samples located at  $x_i$  using:

$$Z(x_0) - m(x_0) = \sum_{i=1}^N \lambda_i [Z(x_i) - m(x_i)] \quad (2)$$

where  $Z$  is treated as a random field with a trend component,  $m$ , and a residual component  $R = Z - m$ , and  $\lambda_i$  is the weight assigned to each sample location.  $R$  is treated as a random function with a mean of zero and a covariance  $C(h)$ .  $C(h)$  can be estimated from the data in the form of a semi-variogram  $\gamma(h)$ :

$$\gamma(h) = \frac{1}{2N(h)} \sum_{(i,j) \in N(h)} |Z(x_i) - Z(x_j)|^2 \quad (3)$$

where  $N(h)$  is the number of data pairs at distance  $h$ , and  $Z(x_i)$  and  $Z(x_j)$  are the data values at points  $x_i$  and  $x_j$ , which are separated by a distance  $h$ . The semi-variogram thus indicates the expected squared increment of the data value over distance  $h$ , and is characterized by three parameters [e.g. Herzfeld et al., 2000]: the nugget (point-scale variance), the range (largest distance at which there is spatial dependence), and the sill (the semi-variance at distances beyond the range). The covariance  $C(h)$  can then be

obtained by  $C(h) = C(0) - \gamma(h)$  where  $C(0)$  is the sill. The sill and range parameters are derived by fitting a model to the semi-variogram calculated from the data. Typically, an exponential, gaussian, or spherical equation is used for this [Deutsch and Journel, 1992].

In most geostatistical applications, data to be interpolated do not only vary in space, but also in time. Therefore, several models have been developed for space-time variability [Kyriakidis and Journel, 1999]. One of these is the product-sum method [De Cesare et al., 2001], which is more flexible compared to other models, does not require an arbitrary space-time metric, and it is relatively straightforward to fit models to the sample semi-variogram [Gething, 2006]. In case of spatio-temporal kriging, a two-dimensional sample semi-variogram is obtained using a distance lag  $h_s$  and a time lag  $h_t$  as dimensions, so that for every  $h_t$  a spatial semi-variogram is obtained and vice-versa. A semi-variogram model is then fitted to both the spatial (average of all  $h_t$ 's) and temporal (average of all  $h_s$ 's) sample semi-variogram. Using the product-sum model, the modelled spatial and temporal semi-variograms are then combined:

$$\begin{aligned} \gamma(h_s, h_t) = & (k_1 C_s(0) + k_3) \gamma_t(h_t) + (k_1 C_t(0) + k_2) \gamma_s(h_s) \\ & - k_1 \gamma_s(h_s) \gamma_t(h_t) \end{aligned} \quad (4)$$

where  $\gamma_s(h_s)$  and  $\gamma_t(h_t)$  are the spatial and temporal semi-variogram, respectively;  $C_s(0)$  and  $C_t(0)$  are the spatial and temporal sills, respectively; and  $k_1$ ,  $k_2$ , and  $k_3$  are given by:

$$\begin{cases} k_1 = \frac{(C_s(0) + C_t(0) - C_{st}(0))}{C_s(0)C_t(0)} \\ k_2 = \frac{C_{st}(0) - C_t(0)}{C_s(0)} \\ k_3 = \frac{C_{st}(0) - C_s(0)}{C_t(0)} \end{cases} \quad (5)$$

where  $C_{st}(0)$  is the spatio-temporal sill, which is normally taken as the maximum value of the sample space-time semi-variogram surface [De Cesare et al., 2002]. The space-time covariance is then used for three-dimensional interpolation ( $x$ ,  $y$ , and  $t$ ), resulting in an interpolated surface at every pixel and at every desired time step, where also samples at earlier or later time steps are used in the estimate.

The treatment of the trend  $m$  is the main difference between the various members of the kriging family. In this study, ordinary kriging (OK) and kriging with external drift (KED) are employed. The system of equations that needs to be solved for interpolation is derived by expressing the variance of the estimation error in terms of the covariances  $C(h)$ , and then minimizing it by equating the partial derivatives with respect to  $\lambda_i$ s to zero [see *Deutsch and Journel*, 1992, for details]. In the simplest case, where  $m$  is assumed uniform, this yields:

$$\sum_{j=1}^N \lambda_j C(x_i - x_j) = C(x_i - x_0), \quad i = 1, 2, \dots, N \quad (6)$$

where  $C(x_i - x_j)$  is the covariance function for lag  $h = x_i - x_j$  and  $C(x_i - x_0)$  is the covariance at lag  $(x_i - x_0)$ . This case is called simple kriging (SK). When other types of kriging are employed the principle remains, but the form of the equation system in Eq. 6 changes slightly. In OK, the most widely used variant,  $m$  is assumed to be constant only for the local neighbourhood of each estimation point ( $m(x_i) = m(x_0)$ ). To be able to estimate  $m$  locally, Eq. 6 is extended with a constraint requiring the sum of weights to be one:

$$\left\{ \begin{array}{l} \sum_{j=1}^N \lambda_j C_R(x_i - x_j) + \mu(x_0) = C_R(x_i - x_0), \\ \sum_{j=1}^N \lambda_j = 1 \end{array} \right. \quad \text{for } i = 1, 2, \dots, N \quad (7)$$

where  $\mu(x_0)$  is a Lagrange parameter associated with the constraint on the weights. Alternatively, a spatial trend can be assumed to exist in  $m$ . In kriging with a trend (KT), sometimes referred to as “universal kriging”, the trend is a linear or higher order function of the (x,y)-coordinates. In case of kriging with external drift (KED), a relation is assumed between  $Z$  and a secondary variable  $Y$ , so that the trend can be calculated from the secondary variable.  $Y$  is assumed to reflect the spatial variability of the variable to be interpolated and to be known at every location in the interpolation grid. In the case of KED, the trend is assumed to be linear (only a first-order trend):

$$m(x_0) = a_0 + a_1 Y(x_0) \quad (8)$$

The system of equations to be solved is further extended, allowing local and implicit estimation of  $a_0$  and  $a_1$ :

$$\left\{ \begin{array}{l} \sum_{j=1}^N \lambda_j C(x_i - x_j) + \mu_0(x_0) + \mu_1(x_0) Y(x_i) \\ \quad \quad \quad = C(x_i - x_0), \text{ for } i = 1, \dots, N \\ \sum_{j=1}^N \lambda_j = 1 \\ \sum_{j=1}^N \lambda_j Y(x_j) = Y(x_0) \end{array} \right. \quad (9)$$

In this study, the FORTRAN programs GAMV and KT3D from the GSLIB geostatistical package [*Deutsch and Journel, 1992*] were used for calculation of the sample semi-



variogram (GAMV) and the actual kriging (both OK and KED). An extension to GSLIB to allow for spatio-temporal kriging was provided by *De Cesare et al.* [2002], which we also employed here. It should be noted that all kriging types (OK, KED, KT, etc.) can be used in both spatial-only and spatio-temporal contexts. For example, *Snepvangers et al.* [2003] used space-time ordinary kriging (ST-OK) and space-time kriging with external drift (ST-KED) to model soil moisture contents. In the remainder of this study, we employ and compare four kriging types: OK, KED, ST-OK, and ST-KED.

### 3.3. Interpolation of $dH/dt$ values

Many studies involving spatial interpolation of satellite measurements have used ordinary kriging [OK *Zwally et al.*, 2005; *Bamber et al.*, 2001; *Herzfeld et al.*, 2000]. Considering the data coverage in Figures 4 and however, it is unlikely that ordinary kriging, based on satellite altimetry alone, will yield a representative spatial pattern. To illustrate this, the maximum thinning rate obtained from ATM data (over the period 1999–2008) was about  $17 \text{ m yr}^{-1}$ , at the location shown by the star in Figure . Note that this point is not located in the centre of the main trunk, and some kilometers away from the grounding zone, so even higher values are possible. The maximum thinning rate as derived from ICESat, on the other hand, was only about  $7 \text{ m yr}^{-1}$  and values obtained by radar altimetry were even lower than that. A possible alternative interpolation method would be the hypsometric approach, in which a relationship is assumed between elevation and  $dH/dt$  [*Arendt et al.*, 2002]. However, since dynamically induced  $dH/dt$  and elevation are not clearly related, the hypsometric approach is not further discussed here.

Ice velocity measurements are available at nearly all locations on the ice sheet, especially over fast-flowing outlet glaciers. From visual inspection of Figure , the spatial patterns of  $dH/dt$  and ice velocity seem very similar. Here, we investigate whether there is information in the ice velocity pattern that can aid the interpolation of  $dH/dt$ . As explained earlier, kriging with external drift (KED) uses auxiliary information to determine the underlying trend model for the interpolation. The secondary variable (velocity) is assumed to reflect the spatial trend in  $dH/dt$  up to a linear rescaling of units [*Deutsch and Journal*, 1992]. Spatial gradients in velocity should thus be related to spatial gradients in  $dH/dt$ .

A spatial correlation between (dynamically induced)  $dH/dt$  and velocity has been noted before [*Joughin et al.*, 2008b; *Rignot et al.*, 2008a; *Pritchard et al.*, 2009]. In fast-flowing areas, that are flowing faster than required to maintain mass balance, ice stretches longitudinally, which causes it to thin vertically [*Rignot et al.*, 2008a]. The thinning increases surface slopes, which further increases velocity [*Joughin et al.*, 2008b]. On outlet glaciers in both Antarctica and Greenland, significant thinning (and associated speed-up) is confined to the fast-flowing areas [*Pritchard et al.*, 2009]. This is also the case for Jakobshavn Isbræ [*Joughin et al.*, 2008b]. Therefore it is reasonable to assume that there is a relation between the spatial gradients of velocity and  $dH/dt$ . Such a relation would also depend on glacier width and thickness. Because Jakobshavn Isbræ is flowing through a deep trough and its thickness is  $> 1000$  m, and changes in width are also relatively small, changes in velocity are dominant in this respect. In addition, it should be stressed that such a relation is not fixed: its parameters ( $a_1$  and  $a_0$  in Eq. 8) are determined implicitly from the kriging system of equations (Eq. 9) and will be variable in space and time. Because

of this flexibility, different spatial gradients of  $dH/dt$  can result from the same spatial gradient in velocity, constrained by the altimetry measurements. This allows us to use an average, static velocity field in order to maximize spatial coverage.

$dH/dt$  is not only caused by ice dynamics but also by changes in surface mass balance, which will cause noise in any relationship between velocity and dynamically induced  $dH/dt$ . In the high-velocity area of Jakobshavn Isbræ, however, thinning rates are  $> 15$  m yr<sup>-1</sup>, whereas maximum SMB values are about -4 m ice yr<sup>-1</sup> [e.g., *Thomas et al.*, 2003]. Dynamic changes are therefore much larger than SMB-induced changes and we can assume that ice dynamics are the dominant signal.

To assess the correlation between velocity and  $dH/dt$ , the two are plotted against each other in Figure . The plots and the highly negative Pearson's correlation coefficients ( $< -0.85$ ) suggest a near-linear relationship, from which we conclude that velocity can be a suitable secondary variable for KED. Figure shows correlation coefficients for the period 1999–2008 (2003–2008 for ICESat), but they were also calculated for individual years (Table 1). It was, however, not always possible to obtain a robust correlation coefficient for each year due to paucity of data. After 1999, correlation coefficients are reasonably high for all sensors.

Interestingly, positive correlation coefficients show up in the early nineties, in the period that Jakobshavn Isbræ was thickening [*Abdalati et al.*, 2001] suggesting a dynamic origin. Apparently, the areas with the highest velocity after 2000, are also the areas

that thickened most before 1997. Figure shows the corresponding scatterplots for ATM measurements in 1994 and 1996. For both years, essentially only one repeated flight line was available, so the number of samples is limited, and the significance of the trend is low. The presence of some warm summers in the mid-nineties [Thomas *et al.*, 2003] and a simultaneous slow-down of the glacier [Joughin *et al.*, 2004] suggest that the thickening was dynamic, and these positive correlation coefficients seem to confirm that. Between 1997 and 2003 correlations are lower because the glacier was in a transition between thickening and thinning, and very few valid  $dH/dt$  estimates are present before 2003. Because a 3-year window was required to calculate  $dH/dt$ , the period at the end of the ERS-2 era and the beginning of the ICESat era has a limited number of measurements. After 2003, when many ICESat epochs can be used, there is a strong anti-correlation ( $\rho < -0.80$ ).

To assess the value of including velocities in the interpolation, both OK and KED were used to interpolate the  $dH/dt$  data obtained in Section 3.1. In addition, to overcome the irregular temporal sampling by the different sensors, ST-OK and ST-KED were also used. One approach to do this would be to interpolate elevations prior to calculating  $dH/dt$ . Due to the very different spatial coverage of ERS-2 compared to ICESat, many areas have coverage for only part of the period, causing artifacts in  $dH/dt$  around these transition periods and noisy results. We therefore chose to calculate  $dH/dt$  prior to interpolation as described in Section 3.1 and interpolate the resulting annual values. Besides, as there is no clear relation between elevation itself and ice velocity, incorporating the external drift is not straightforward or sensible if elevations are interpolated directly.

As a first step of the interpolation process, semi-variogram models were estimated (see Section 3.2) using the GAMV routine in the GSLIB package (for OK/KED) or the extension to GSLIB by *De Cesare et al.* [2002], after which range and sill parameters were estimated using standard curve fitting routines. Figure shows all resulting sample semi-variograms and models. Corresponding parameters and variogram model types (gaussian, spherical or exponential, see for example *Herzfeld et al.* [2000] for details) are shown in Table 2.

For all kriging methods, we use the sample semi-variogram calculated from the satellite data only (ICESat and ERS-2), as we intend to use ATM data for validation only. The resulting semi-variogram and model are shown in Figure a. For comparison, the semi-variogram resulting from ATM data only is shown in Figure b. Because most of the ATM data are concentrated in the high-velocity area of the glacier (roughly a 50x50 km area), semi-variance for ATM is only considered and shown for spatial lags up to about 50 km. Because ice flow is mainly east-west, and most data are organized in (almost) north-south oriented tracks,  $dH/dt$  is expected to be anisotropic. Therefore, specific variograms were calculated for east-west and north-south directions, shown as gray and orange lines in Figures a and b. However, for lags up to about 60 km (all of the ATM data), semi-variograms for specific directions are very similar. Only for larger spatial lags do the east-west and overall semi-variograms diverge, but not significantly. Because distances in east-west direction within the basin are much larger than north-south, the north-south variogram should only, like ATM, be considered at smaller lags. Based on these results, we use the overall semi-variograms in the remainder of this study. Moreover, when the anisotropic

semi-variograms were used for kriging the resulting anisotropy in the interpolated pattern was greatly exaggerated (not shown).

Figures c and d show the spatio-temporal semi-variograms. From the sample semi-variogram surface (black surface in Figure d), the marginal space and time semi-variograms are derived, and models are fitted to them (Figure c). These are combined using the product-sum model [De Cesare *et al.*, 2001] and the red square, representing the modelled semi-variogram surface (Eq. 4) is obtained. The marginal temporal variogram is not particularly structured and not a very good fit is obtained. It should be noted, though, that the temporal resolution was probably not sufficient to capture a complete covariance structure because of the regression in moving three-year periods.

#### 4. Results

Based on the parameters from Table 2, annual  $dH/dt$  estimates for the entire Jakobshavn Isbræ area were derived, using all four kriging variants. In addition, longer-term  $dH/dt$  values were interpolated using all data after 1999, i.e., 1999–2003 for ERS-2 and 2003–2008 for ICESat. Data before 1999 were excluded here because the change from thickening to thinning took place in around 1998 and assuming a linear change rate would thus be invalid.

Figure shows temporally averaged  $dH/dt$  along a transect following the approximate line of maximum velocity from the grounding zone towards the accumulation zone.  $dH/dt$  values are shown for all four kriging methods, as are input (ERS-2 and ICESat) and val-

idation (ATM) measurements along the transect. It should be noted that OK and KED use the temporally averaged  $dH/dt$  values (which are also shown) as input, whereas for ST-OK/ST-KED interpolation results were averaged. In Figure b, therefore, the transects for ST-OK/ST-KED do not pass exactly through the input data. In addition, Figure shows the spatial patterns of  $dH/dt$  for the same period. Input data are shown as well (Figure a), and Figure b shows interpolated ATM data (using ordinary kriging), which can be considered as the “true” spatial pattern because of the high sampling density in the area of interest. To get an estimate from ST-OK and ST-KED for the same period, the average  $dH/dt$  over the years 1999–2008 was calculated (Figs. e and f).

Both Figure and show that interpolated thinning rates are never higher than measured ones (about  $7 \text{ m yr}^{-1}$ ) if no velocity data are used. This is clearly unrealistic (Figure a). As was mentioned in Section 3.3, ATM data shows much higher thinning rates. The highest measurement, close to the grounding line in 2004 (Figure e), is about  $25 \text{ m yr}^{-1}$ , which is an indication of the maximum thinning rate near the grounding zone.

The interpolated spatial patterns using KED and ST-KED are evidently more realistic than those using OK/ST-OK compared to the interpolated ATM data (Figure ). Also the interpolated thinning rates along the transect closely follow those of the ATM validation data (Figure ). It should be noted that for the ATM data shown in Figure the threshold on the standard error was slightly relaxed to be able to show more ATM data points ( $0.6 \text{ m yr}^{-1}$  whereas it is  $0.4 \text{ m yr}^{-1}$  in the rest of this study).

The velocity along the transect, which is also shown in Figure , rapidly increases from about  $4 \text{ km yr}^{-1}$  to  $12 \text{ km yr}^{-1}$  in the 10 km nearest to the grounding zone. ATM measurements along the transect show that the interpolated  $dH/dt$  values for KED and ST-KED are accurate upstream of that point. Closer to the grounding zone, however, thinning rates as predicted by KED/ST-KED follow a similar gradient to velocity (as would be expected from the external drift algorithm), rapidly reaching improbable values (up to  $-80 \text{ m yr}^{-1}$ ). Two explanations are possible for this: first, while we excluded the area west of the approximate grounding line in 2004, the grounding line has been retreating in recent years [*Csatho et al.*, 2008; *Thomas et al.*, 2003] and might have migrated several kilometers further inland by 2008. Part of the area with very high velocities may thus have become ungrounded. Second, the sudden increase in velocity gradient suggests a change in flow regime. In both cases, the relation between velocity and  $dH/dt$  breaks down and we thus decided to exclude the area with velocities  $> 4000 \text{ m yr}^{-1}$ , and the area within 5 km east of the 2004 grounding line. The combined area that is removed is relatively small (Figure ).

Statistics of  $dH/dt$  averaged over the same period are shown in Table 3. As we are focusing here on the high-velocity area, statistics were calculated using pixels associated with velocities  $\geq 100 \text{ m yr}^{-1}$  only (Figure ). However, for the entire basin, average  $dH/dt$  values are also negative (not shown). This is in line with the net mass loss reported by other studies [e.g. *Rignot et al.*, 2008b; *Sørensen et al.*, 2011].

To quantify the errors of all four interpolation methods, a cross-validation approach was carried out [*Deutsch and Journal*, 1992]. Using a separate run for each interpola-



tion algorithm, every available altimetry measurement is left out and estimated from its neighbours. The error is then the difference between the interpolated and the actually measured value. Statistics of the errors, for individual years and the period 1999–2008, are shown in the form of box-plots in Figure a. For spatio-temporal kriging, this exercise could only be carried out for individual years. For cross-validation only the input data (i.e., no ATM) were used. These were located almost exclusively outside the high-velocity area. The influence of the external drift should, therefore, be non-existent or very small. Figure a shows that this is indeed the case, except for some years prior to 2002 where only (very few) ERS-2 measurements are available and one observation close to the high-velocity area has a noticeable effect. When comparing spatio-temporal kriging versus spatial-only kriging the differences are again small, although in most cases the errors are slightly smaller for ST-OK/ST-KED, because more (past and future) samples are taken into account. Exceptions are 1998 and 2003. 2003 is also the only year with a bias (i.e., the average of the errors is not zero). Because neither ERS-2 nor very many ICESat measurements are available for 2003 this can also be attributed to the low sampling density.

In Figure b, box plots are shown for a comparison of interpolated values and ATM measurements where those are available. Because the number of ATM measurements changes dramatically over the years, interpretation of these errors is difficult. To compare results for the period 1999–2007,  $dH/dt$  from KED/ST-KED were averaged over these years. When many input measurements are available (typically the middle of the ICESat era and in the case of the averaged data), using the external drift reduces both the bias (mean error) and the maximum errors. If only few input data are available, i.e., only ERS-2,

either all methods produce nearly the same errors, or maximum errors are slightly larger when using the external drift. There are two cases where errors are larger for KED (2004) or ST-KED (2002). This period marks the end of the ERS-2 coverage and the beginning of ICESat coverage. Because 3-year running windows were used to select data for the regression, in this period very few  $dH/dt$  estimates with sufficiently low standard error are available. Hence, the external drift “overshoots” the ATM measurements in some of those occasions. Furthermore, it should be noted that in both years the available ATM measurements were clustered in a small area (Figure c and e).

To further assess the temporal evolution of  $dH/dt$ , after interpolation, Figure shows the difference in time evolution between the methods. Six selected years from the period 1997–2007 are shown. It should be noted that from 2005 onwards the spatial patterns are similar. As mentioned before, prior to 2003 only data from ERS-2 was available, making it difficult to obtain a realistic pattern given the sparsity of ERS-2 (Figure 4). For KED and ST-KED, the sign of (sometimes very few) data points determines the direction in which the trend is calculated. For example in 2003, where the few satellite measurements that are available are predominantly positive (probably caused by a positive anomaly in the surface mass balance), values in the high-velocity area are predicted to be higher than the remaining part of the basin. This is not necessarily unrealistic, given the correlation between dynamic thickening and velocity that was discussed before (Section 3.3 and Table 1).

Using spatio-temporal kriging, where measurements from adjacent years are employed, smooths the temporal variations considerably. Figure shows that the transition between

thickening and thinning is around 2000, which is about two years later than reported elsewhere [e.g. *Thomas et al.*, 2009; *Csatho et al.*, 2008; *Joughin et al.*, 2008b]. However, as mentioned before, only ERS-2 data were available in this period, none of which is located around the high-velocity area. The dynamic thinning started near the grounding zone and then propagated upstream. It thus took some time to advance far enough upstream to be captured by ERS-2. The ST-OK and ST-KED patterns around this transition do not look realistic, as there is a sharp boundary between positive and negative values, caused by measurements with opposing signs. A higher sampling density in that period (e.g., additional sensors, or repeat-track processing of ERS-2 instead of cross-overs) would alleviate this.

## 5. Discussion

In our results, kriging with external drift produces generally higher thinning rates that are closer to the ATM data. In addition, spatio-temporal kriging smooths effects of interannual variability in surface mass balance and it also improves estimates in periods with data gaps because it can use data from adjacent epochs. We believe, therefore, that ST-KED produces the best results. There are, however, some areas and periods where performance is less than optimal.

Close to the grounding zone, where velocity rapidly increases from  $\sim 4 \text{ km yr}^{-1}$  to about  $\sim 12 \text{ km yr}^{-1}$  in a distance of 10 km, thinning rates as interpolated by KED/ST-KED increase with a similar gradient, resulting in physically unrealistic values. In this area, the relation between velocity and  $dH/dt$  breaks down because of uncertainty in the exact

location of the grounding line. In addition, the large change in velocity gradient suggests that a different physical process becomes important. Furthermore, in the transition period from thickening to thinning, samples with opposing signs cause the trend from the external drift to have different signs, resulting in unrealistic patterns. This transition period, which in the high-velocity area happened around 1998, is delayed for some years in our interpolated time series because it took about two years for the thinning to propagate far enough upstream to be captured by radar altimetry.

Because KED and ST-KED yield higher thinning rates over the fast-flowing part of Jakobshavn Isbræ, the resulting mass change might be different as well. The calculation of actual mass changes requires modeling density profiles and firn compaction, which is outside of the scope of this study. It is, however, straightforward to calculate volume changes by integrating  $dH/dt$  over the basin. Table 4 provides volume changes for individual years between 1996 and 2007, as well as longer-term averages. In these estimates, the area with velocity  $> 4000 \text{ m yr}^{-1}$  and within 5 km of the 2004 grounding line was not taken into account, as discussed previously. These areas were assigned a  $dH/dt$  of  $-20 \text{ m yr}^{-1}$ , which is a reasonable value given the minimum value in ATM of  $-24 \text{ m yr}^{-1}$ . However, because this area is small, its impact on the integrated volume change is also small. As an extreme example, not assigning a value (i.e.,  $0.0 \text{ m yr}^{-1}$ ) yields volume losses that are about  $2 \text{ km}^3 \text{ yr}^{-1}$  lower. In general, volume change estimates for Jakobshavn Isbræ are about 10-20% higher for ST-KED than for ST-OK, with an average volume loss over 2003-2007 of  $20.5 \text{ km}^3 \text{ yr}^{-1}$  for ST-KED versus  $17.5 \text{ km}^3 \text{ yr}^{-1}$  for ST-OK (Table 4). Thus, the interpolation technique used can have a significant impact on the estimated

volume changes at this scale. However, Jakobshavn Isbræ is one of the largest glaciers in Greenland with high thinning rates over a large area. When the entire ice sheet is considered, the differences can be expected to be smaller because not all outlet glaciers are thinning. To assess the difference in volume or mass changes between interpolation methods for the entire ice sheet will be part of future work.

Furthermore, it would be useful to assess whether ST-KED is suitable for use on other outlet glaciers, or whether Jakobshavn Isbræ is particularly suited to this approach. An important requirement is that dynamically induced  $dH/dt$  values are dominant with respect to the SMB induced  $dH/dt$ . If that is not the case, it could be possible to use SMB from a regional climate model [e.g., *Ettema et al.*, 2009] to correct for the influence of SMB. If ice dynamics dominate, the assumption that significant dynamic thinning occurs mainly in the high-velocity area would allow the use of KED, as the exact relation between  $dH/dt$  and velocity (which is different for each glacier) is determined implicitly and is locally variable. In areas where spatial gradients in velocity are very low, the spatial trend in  $dH/dt$  will also be very small so that interpolated values will be very similar to those obtained by OK. Another requirement is that ice velocities are available at every location on the ice sheet. However, nearly all outlet glaciers are covered by InSAR measurements [e.g., *Moon et al.*, 2012] and the gaps that occur are mainly located in the interior where gradients are small.

## 6. Summary and conclusions

Interpolation of  $dH/dt$  values derived from satellite altimeters is hampered by sparse sampling over, often, narrow outlet glaciers, where the largest changes occur due to dynamic thinning. To mitigate this problem, we have used velocity data from InSAR and speckle tracking as secondary data to inform the interpolation. The approach was tested over Jakobshavn Isbræ, where extensive airborne laser altimetry data (ATM) are available for validation.

First, the relation between ice velocity and  $dH/dt$  was examined, revealing a near-linear relation with highly negative correlation coefficients ( $< -0.85$ ). Interestingly, when the glacier was thickening in the mid-nineties a correlation was found as well, suggesting the thickening had a ice-dynamical origin (i.e., a slowdown at some earlier time). Using ATM data as reference, interpolated spatial patterns of average  $dH/dt$  are more realistic when velocity is used as a background field. Maximum thinning rates, that are about  $7 \text{ m yr}^{-1}$  for ordinary kriging, become similar to ATM data, at about  $20 \text{ m yr}^{-1}$ , when velocity is considered in the interpolation. In addition, spatio-temporal kriging smooths effects of interannual variability in surface mass balance and it also improves estimates in periods with data gaps because it can use data from adjacent periods. Errors with respect to ATM (mainly located in the high-velocity area) are generally reduced significantly, except for some cases with very few available observations. For these reasons, interpolation with ST-KED was considered to yield the best results. However, very close to the grounding line, spatial gradients of  $dH/dt$  become physically unrealistic due to a change in flow regime in this region. In addition, the transition from thickening to thinning (around 1998 in the high-velocity area) was delayed in our interpolated time series because it took

time for the thinning to propagate into the areas with higher elevation where the ERS-2 radar altimeter was sampling.

Volume changes that were calculated from the four resulting interpolation methods showed that volume loss derived from ST-KED was about  $2\text{-}4 \text{ km}^3 \text{ yr}^{-1}$ , or 10-20%, higher compared to OK. When applied to the entire ice sheet ST-KED may therefore result in increased mass loss estimates. However, as Jakobshavn Isbræ is one of the largest and most dynamically active glaciers in Greenland, the significance of this percentage increase will likely be smaller and remains for further research.

Previously, in order to estimate the Greenland mass balance, radar altimetry was merged with ATM data over outlet glaciers [Zwally *et al.*, 2005]. The interpolation method proposed here yields similar results with radar altimetry only. Although for newer and future sensors such as CryoSat-II and ICESat-2 coverage over outlet glaciers will likely be less of a problem, our interpolation will improve ice sheet mass balance reconstructions from existing and past satellite altimeter data sets.

**Acknowledgments.** This work was supported by funding to the ice2sea programme from the European Union 7<sup>th</sup> Framework Programme, grant number 226375. Ice2sea contribution number 28. We thank the three reviewers and the editor for their thoughtful and constructive comments.

## References

- Abdalati, W., and W. B. Krabill (1999), Calculation of the ice velocities in the Jakobshavn Isbrae area using airborne laser altimetry, *Remote Sens. Environ.*, *67*, 194–204.
- Abdalati, W., et al. (2001), Outlet glacier and margin elevation changes: Near coastal thinning of the Greenland ice sheet, *J. Geophys. Res.*, *106*(D24), 33,729–33,741.
- Abshire, J. B., X. Sun, H. Riris, J. Marcos Sirota, J. F. McGarry, S. Palm, D. Yi, and P. Livina (2005), Geoscience Laser Altimeter System (GLAS) on the ICESat mission: on-orbit measurement performance, *Geophys. Res. Lett.*, *32*, L21S02, doi:10.1029/2005GL024028.
- Arendt, A. A., K. A. Echelmeyer, W. D. Harrison, C. S. Lingle, and V. B. Valentine (2002), Rapid wastage of Alaska glaciers and their contribution to rising sea level, *Science*, *297*, 382–386.
- Bamber, J., and J. L. Gomez-Dans (2005), The accuracy of digital elevation models of the Antarctic continent, *Earth Planet. Sc. Lett.*, *237*, 516–523, doi:10.1016/j.epsl.2005.06.008.
- Bamber, J. L., S. Ekholm, and W. B. Krabill (2001), A new, high-resolution digital elevation model of Greenland fully validated with airborne laser altimeter data, *J. Geophys. Res.*, *106*(B4), 6733–6745.
- Brenner, A. C., R. A. Bindschadler, R. H. Thomas, and H. J. Zwally (1983), Slope-induced errors in radar altimetry over continental ice sheets, *J. Geophys. Res.*, *88*(C3), 1617–1623.
- Brenner, A. C., J. P. DiMarzio, and H. J. Zwally (2007), Precision and accuracy of satellite radar and laser altimeter data over the continental ice sheets, *IEEE T. Geosci. Remote. Sens.*, *45*(2), 321–331, doi:10.1109/TGRS.2006.887172.



- Csatho, B., T. Schenk, C. J. van der Veen, and W. B. Krabill (2008), Intermittent thinning of the Jakobshavn Isbræ, West Greenland, since the Little Ice Age, *J. Glaciol.*, *54*(184), 184.
- De Cesare, L., D. E. Meyers, and D. Posa (2001), Estimating and modeling space-time correlation structures, *Stat. Probabil. Lett.*, *51*, 9–14.
- De Cesare, L., D. E. Myers, and D. Posa (2002), FORTRAN programs for space-time modeling, *Comput. Geosci.*, *28*, 205–212.
- Deutsch, C. V., and A. G. Journel (1992), *GSLIB - Geostatistical Software Library and User's Guide*, Applied Geostatistics Series, 338 pp., Oxford University Press, New York.
- Ettema, J., M. van den Broeke, E. van Meijgaard, W. van de Berg, J. Bamber, J. Box, and R. Bales (2009), Higher surface mass balance of the Greenland ice sheet revealed by highresolution climate modeling, *Geophys. Res. Lett.*, *36*, 1958–2003, doi:10.1029/2009GL038110.
- Gething, P. W. (2006), Spatiotemporal modelling of health management information system data to quantify malaria treatment burdens in the Kenyan Government formal health sector, Ph.D. thesis, University of Southampton.
- Hengl, T., G. B. M. Heuvelink, and A. Stein (2003), Comparison of kriging with external drift and regression-kriging, *Tech. rep.*, ITC.
- Herzfeld, U. C., R. Stosius, and M. Schneider (2000), Geostatistical methods for mapping Antarctic surfaces at continental and regional scales, *Ann. Glaciol.*, *30*, 76–82.
- Holland, D. M., R. H. Thomas, B. de Young, M. H. Ribergaard, and B. Lyberth (2008), Acceleration of Jakobshavn Isbrae triggered by warm subsurface ocean waters, *Nature Geoscience*, *1*, 659–664, doi:10.1038/ngeo316.

- Howat, I., I. Joughin, and T. Scambos (2007), Rapid changes in ice discharge from Greenland outlet glaciers, *Science*, *315*(5818), 1559, doi:10.1126/science.1138478.
- Howat, I. M., B. E. Smith, I. Joughin, and T. E. Scambos (2008), Rates of southeast Greenland ice volume loss from combined ICESat and ASTER observations, *Geophys. Res. Lett.*, *35*, L17505, doi:10.1029/2008GL034496.
- Hurkmans, R. T. W. L., J. L. Bamber, and J. A. Griggs (2012), Importance of slope-induced error correction in volume change estimates from radar altimetry, *The Cryosphere*, *6*, 447–451, doi:10.5194/tc-6-447-2012.
- Joughin, I. (2002), Ice-sheet velocity mapping: a combined interferometric and speckle-tracking approach, *Ann. Glaciol.*, *34*(1), 195–201.
- Joughin, I., W. Abdalati, and M. Fahnestock (2004), Large fluctuations in speed on Greenland’s Jakobshavn Isbrae glacier, *Nature*, *432*, 608–609.
- Joughin, I., S. B. Das, M. A. King, B. E. Smith, I. M. Howat, and T. Moon (2008a), Seasonal speedup along the western flank of the Greenland Ice Sheet, *Science*, *320*, 781–783, doi:10.1126/science.1153288.
- Joughin, I., I. M. Howat, M. Fahnestock, B. Smith, W. Krabill, R. B. Alley, H. Stern, and M. Truffer (2008b), Continued evolution of Jakobshavn Isbræ following its rapid speedup, *J. Geophys. Res.*, *113*, F04006, doi:10.1029/2008JF001023.
- Joughin, I., B. E. Smith, I. M. Howat, T. Scambos, and T. Moon (2010), Greenland flow variability from ice-sheet-wide velocity mapping, *J. Glaciol.*, *56*(197), 415–430.
- Krabill, W., et al. (2000), Greenland ice sheet: High-elevation balance and peripheral thinning, *Science*, *289*(5478), 428–430.

- Krabill, W., et al. (2004), Greenland ice sheet: increased coastal thinning, *Geophys. Res. Lett.*, *31*, L24402, doi:10.1029/2004GL021533.
- Kyriakidis, P. C., and A. G. Journel (1999), Geostatistical space-time models: a review, *Math. Geol.*, *31*, 651–684.
- Li, Y., and C. H. Davis (2008), Decadal mass balance of the Greenland and Antarctic ice sheets from high resolution elevation change analysis of ERS-2 and ENVISAT radar altimetry measurements, in *Proceedings of International Geoscience and Remote Sensing Symposium*, vol. 4, pp. 339–342, Boston, MA.
- Luckman, A., and T. Murray (2005), Seasonal variation in velocity before retreat of Jakobshavn isbræ, Greenland, *Geophys. Res. Lett.*, *32*, K08501, doi:10.1029/2005GL022519.
- Luthcke, S., H. Zwally, W. Abdalati, D. Rowlands, R. Ray, R. Nerem, F. Lemoine, J. McCarthy, and D. Chinn (2006), Recent Greenland ice mass loss by drainage system from satellite gravity observations, *Science*, *314*(5803), 1286, doi:10.1126/science.1130776.
- Moon, T., I. Joughin, B. Smith, and I. Howat (2012), 21st-century evolution of Greenland outlet glacier velocities, *Science*, *336*, 576–578, doi:10.1126/science.1219985.
- Motyka, R. J., M. Fahnestock, and M. Truffer (2010), Volume change of Jakobshavn Isbræ, West Greenland: 1985–1997–2007, *J. Glaciol.*, *56*(198), 635–646.
- Motyka, R. J., M. Truffer, M. Fahnestock, J. Mortensen, S. Rysgaard, and I. Howat (2011), Submarine melting of the 1985 Jakobshavn Isbræ floating tongue and the triggering of the current retreat, *J. Geophys. Res.*, *116*, F01007, doi:10.1029/2009JF001632.
- Pritchard, H., R. Arthern, D. Vaughan, and L. Edwards (2009), Extensive dynamic thinning on the margins of the Greenland and Antarctic ice sheets, *Nature*, *461*(7266), 971–975, doi:10.1038/nature08471.

- Rignot, E., and P. Kanagaratnam (2006), Changes in the velocity structure of the Greenland Ice Sheet, *Science*, *311*(5763), 986, doi:10.1126/science.1121381.
- Rignot, E., J. Bamber, M. Van den Broeke, C. Davis, Y. Li, W. Van de Berg, and E. Van Meijgaard (2008a), Recent Antarctic ice mass loss from radar interferometry and regional climate modelling, *Nature Geoscience*, *1*(2), 106–110, doi:10.1038/ngeo102.
- Rignot, E., J. E. Box, E. Burgess, and E. Hanna (2008b), Mass balance of the Greenland ice sheet from 1958 to 2007, *Geophys. Res. Lett.*, *35*, L20502, doi:10.1029/2008GL035417.
- Schuurmans, J. M., M. F. P. Bierkens, E. J. Pebesma, and R. Uijlenhoet (2007), Automatic prediction of high-resolution daily rainfall fields for multiple extents: The potential of operational radar, *J. Hydrometeorol.*, *8*, 1204–1224, doi:10.1175/2007JHM792.1.
- Slobbe, D. C., R. C. Lindenbergh, and P. Ditmar (2008), Estimation of volume change rates of Greenland’s ice sheet from ICESat data using overlapping footprints, *Remote Sens. Environ.*, *112*(12), 4204–4213, doi:10.1016/j.rse.2008.07.004.
- Snepvangers, J. J. J. C., G. B. M. Heuvelink, and J. A. Huisman (2003), Soil water content interpolation using spatio-temporal kriging with external drift, *Geoderma*, *112*, 253–271.
- Sørensen, L. S., S. B. Simonsen, K. Nielsen, P. Lucas-Picher, G. Spada, G. Algeirsdottir, R. Forsberg, and C. S. Hvidberg (2011), Mass balance of the Greenland ice sheet (2003–2008) from ICESat data – the impact of interpolation, sampling and firn density, *The Cryosphere*, *5*, 173–186, doi:10.5194/tc-5-173-2011.
- Stearns, L. A., and G. S. Hamilton (2007), Rapid volume loss from two East Greenland outlet glaciers quantified using repeat stereo satellite imagery, *Geophys. Res. Lett.*, *34*,

L05503, doi:10.1029/2006GL028982.

Thomas, R., C. Davis, E. Frederick, W. Krabill, Y. Li, S. Manizade, and C. Martin (2008), A comparison of Greenland ice-sheet volume changes derived from altimetry measurements, *J. Glaciol.*, *54*(185), 203–212.

Thomas, R., E. Frederick, W. Krabill, S. Manizade, and C. Martin (2009), Recent changes on Greenland outlet glaciers, *J. Glaciol.*, *55*(189), 147–162.

Thomas, R. H., W. Abdalati, E. Frederick, W. B. Krabill, S. Manizade, and K. Steffen (2003), Investigation of surface melting and dynamic thinning on Jakobshavn Isbræ, Greenland, *J. Glaciol.*, *49*(165), 231–239.

Wouters, B., D. Chambers, and E. J. O. Schrama (2008), GRACE observes small-scale mass loss in Greenland, *Geophys. Res. Lett.*, *35*(2), L20501, doi:10.1029/2008GL034816.

Zwally, H., M. Giovinetto, J. Li, H. Cornejo, M. Beckley, A. Brenner, J. Saba, and D. Yi (2005), Mass changes of the Greenland and Antarctic ice sheets and shelves and contributions to sea-level rise: 1992–2002, *J. Glaciol.*, *51*(175), 509–527.

Zwally, H., et al. (2002), ICESat's laser measurements of polar ice, atmosphere, ocean, and land, *Journal of Geodynamics*, *34*(3-4), 405–445.

Zwally, H. J., R. Schutz, C. Bentley, J. Bufton, T. Herring, B. Minster, J. Spinhirne, and R. Thomas (2010), GLAS/ICESat L1B Global Elevation Data V031, 20 February 2003 to 11 October 2009, Boulder, CO: National Snow and Ice Data Center. Digital Media.

Zwally, H. J., et al. (2011), Greenland ice sheet mass balance: distribution of increased mass loss with climate warming; 2003–07 versus 1992–2002, *J. Glaciol.*, *57*(102), 88–102.

Figure 1. Overview of the study area and spatial coverage of the data used in this study, overlaid on a MODIS image of the area from June 2002. Ice velocity is shown as contours with 200 m yr<sup>-1</sup> intervals. The thick black line shows the approximate terminus position in June 2004 [from *Csatho et al.*, 2008]. Only locations for which a valid  $dH/dt$  estimate (see text) could be obtained are shown. The inset shows location and size of Jakobshavn Isbræ (black shade) and the red square is the extent of the figure.

Figure 2.  $dH/dt$  from all sources plotted over the same MODIS image as in Figure 4. Elevation rates are determined using a) all data after 1999, or b-f) data from individual 3-year periods centered on 1998, 2002, 2003, 2004, or 2006 respectively. Also velocity is shown in black 200 m yr<sup>-1</sup> contours (up to 1,400 m yr<sup>-1</sup>). For clarity, only the area around the high-velocity part of the glacier is shown, similar to the area shown in Figure 4. The blue star denotes the measurement with the highest thinning rate in the image.

Figure 3. As Figure , but now standard errors of the  $dH/dt$  displayed in Figure are shown.

Figure 4. Scatterplots of  $dH/dt$  versus velocity, for (clockwise from upper left) ATM, ICESat, ICESat+ERS-2, and all sensors. For each sensor, data from the entire basin (Figure 4) were used, and  $dH/dt$  values are based on the period 1999–2008 (2003–2008 for ICESat, 1999–2003 for ERS-2). Lines and correlation coefficients are based on linear least squares regression.

Figure 5.  $dH/dt$  versus velocity, specifically for ATM data in 1994 and 1996, when Jakobshavn Isbræ was thickening. Lines and correlation coefficients are based on linear least squares regression.

sion. Although few ATM samples are available and the signal to noise ratio is relatively low, a clear relation is present between (dynamic) thickening and ice velocity.

Figure 6. Semi-variograms and their fitted models, based on input satellite data (a,c,d) and ATM validation data (b). (a) shows the variogram for spatial-only kriging; (c) shows the marginal spatial (lower set of curves) and temporal (upper set) semi-variograms; (d) shows the semi-variogram surface from data (black) and model (red). In all plots, black/gray (black for isotropic, gray for anisotropic) lines reflect data, whereas red/orange lines indicate fitted models. All parameter values are provided in Table 2.

Figure 7. (a) Location of the centerline of the main trunk (approximate line of highest velocity) of Jakobshavn Isbræ as well as locations of input (brown dots) and ATM (green stars) measurements. (b) shows  $dH/dt$  versus distance along this centerline for all interpolation methods and data points, as well as velocity (black line).

Figure 8.  $dH/dt$  values over a sub-area of Jakobshavn Isbræ, using average  $dH/dt$  values over the period 1999–2008. Locations of ERS-2 and ICESat measurements are shown in (a), and interpolated ATM (considered to be the “true” pattern) is shown in (b). (c) to (f) show interpolation results by OK, KED, ST-OK, and ST-KED, in that order. Contours show velocity: dark and bright green represent 100 m yr<sup>-1</sup> and 1000 m yr<sup>-1</sup> velocity intervals, respectively. Only the areas further than 5 km from the grounding line and with velocities between 100 m yr<sup>-1</sup> and 4000 m yr<sup>-1</sup> are shown as these are used in most subsequent analyses (see text).

Figure 9. Errors of cross-validation (a) and comparison with ATM (b), for all individual years as well as the entire period (All). The numbers in (b) represent the number of available ATM measurements. Furthermore, the size of the boxes represent the quartile range, with the middle being the median and the +-sign the mean. Whiskers indicate 1% and 99% percentiles, and the outer stars the minimum and maximum values.

Figure 10. Spatial pattern resulting from the four kriging methods (from left to right: OK, KED, ST-OK, ST-KED), for seven selected years (after 2005 the patterns are similar to 2005). The color scale shows  $dH/dt$  in  $\text{m yr}^{-1}$ .



**Table 1.** Correlation between velocity and  $dH/dt$  from all instruments.

	ATM		ICESat		ERS-2		All	
	$\rho$	$N$	$\rho$	$N$	$\rho$	$N$	$\rho$	$N$
1994	0.73	64	-	-	-	-	0.73	64
1995	-	-	-	-	-0.23	77	-0.23	77
1996	0.48	38	-	-	0.06	113	0.49	151
1997	-0.02	67	-	-	0.17	115	-0.19	182
1998	-0.25	112	-	-	-0.41	116	-0.28	228
1999	-	-	-	-	-0.37	115	-0.37	115
2000	-	-	-	-	-0.32	114	0.04	123
2001	0.26	10	-	-	-0.32	114	-0.07	124
2002	-0.63	26	-	-	-0.31	114	-0.81	140
2003	-	-	-0.47	30	-0.66	105	-0.57	135
2004	-0.82	34	-0.53	4674	-	-	-0.82	4708
2005	-0.81	33	-0.79	6181	-	-	-0.89	6214
2006	-0.81	33	-0.84	6007	-	-	-0.91	6040
2007	-	-	-0.80	3986	-	-	-0.80	3986
ALL	-0.85	524	-0.88	6727	-0.56	117	-0.91	7368

Correlation coefficients between velocity and  $dH/dt$  ( $\rho$ ) and the number of measurements ( $N$ ), for ATM, ICESat, ERS-2, and all data combined. Values are shown for individual years, based on data from moving 3-year periods, and averaged over the period 1999–2008 (ALL). Data before 1999 are excluded to limit the influence of opposing signs due to the transition from thickening to thinning in 1998 [Csatho et al., 2008; Thomas et al., 2003].

**Table 2.** Semi-variogram parameters for the semi-variograms shown in Figure .

	Satellite input			ATM			
	Type	Range [km]	Sill [m <sup>2</sup> ]	Type	Range [km]	Sill [m <sup>2</sup> ]	
1–D	Exp.	497.5	0.216	Gau.	63.5	7.712	
E–W	Exp.	834.1	0.448	Gau.	86.8	8.352	
N–S	Sph.	117.4	0.039	Gau.	51.9	7.809	
$C_{st}$	Space marginal			Time marginal			
	Type	Range [km]	Sill [m <sup>2</sup> ]	Type	Range [km]	Sill [m <sup>2</sup> ]	
1–D	0.16	Exp.	54.4	0.076	Sph.	10.2	0.071
E–W	0.22	Exp.	210.5	0.123	Sph.	9.0	0.088
N–S	0.13	Sph.	135.7	0.048	Sph.	12.0	0.041

Parameters (Range and Sill) as well as type (“Exp.,” “Gau.” and “Sph.” are resp. exponential, gaussian and spherical), are shown for the isotropic case (1–D) as well as two directions (east-west; E–W and north-south; N–S) in the anisotropic case.

**Table 3.** Statistics of data and interpolations of  $dH/dt$  values over the period 1999–2008.

	Mean	St.dev.	Min	10-p.	90-p.	Max
Input (760)	-0.764	1.115	-6.989	-2.157	-0.008	1.138
ATM data (450)	-2.413	2.365	-17.077	-5.496	-0.330	0.565
ATM int.	-1.207	1.877	-16.688	-3.041	-0.112	1.800
OK	-1.042	1.356	-6.823	-3.265	-0.091	0.763
KED	-1.157	1.776	-19.863	-3.513	-0.081	0.764
ST-OK	-0.731	0.882	-4.247	-2.135	-0.052	0.721
ST-KED	-0.979	1.793	-26.124	-2.638	-0.052	2.418

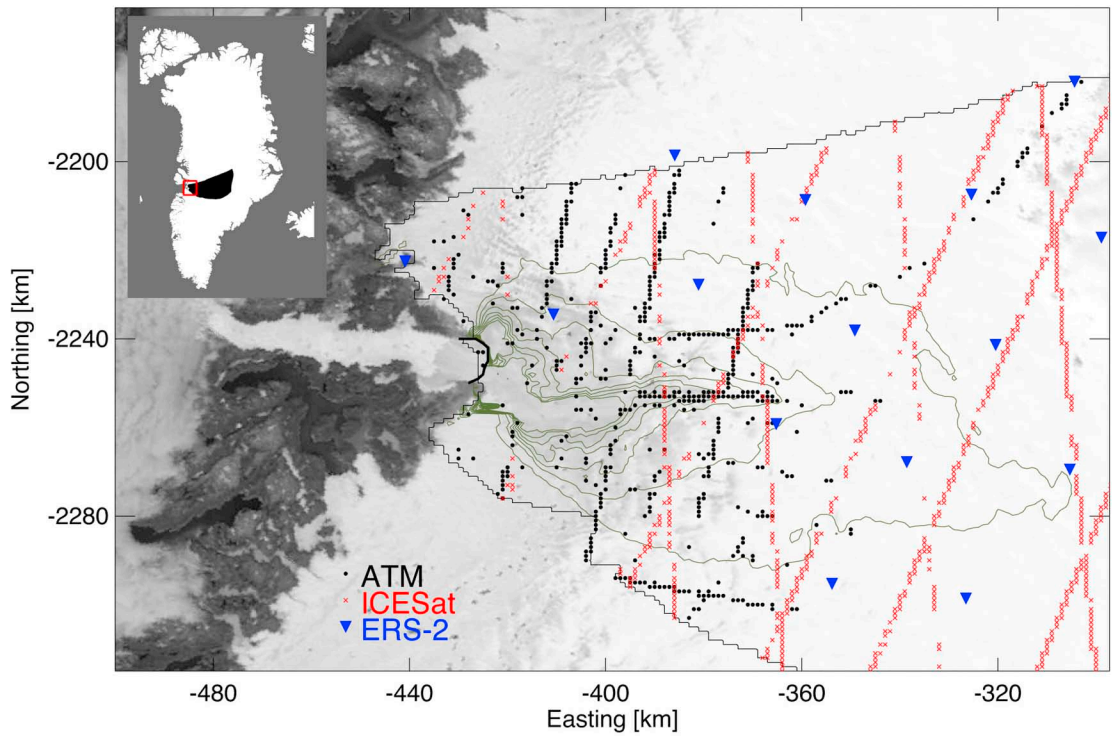
For space-time kriging, the value for this period was obtained by averaging  $dH/dt$  over individual years. Shown are the mean, standard deviations, minimum and maximum, as well as the 10% and 90% percentiles. Note that for input and ATM data, the numbers (between brackets) are very much smaller than the total number of pixels in the area of interest (14,348) and thus heavily influence the statistics.

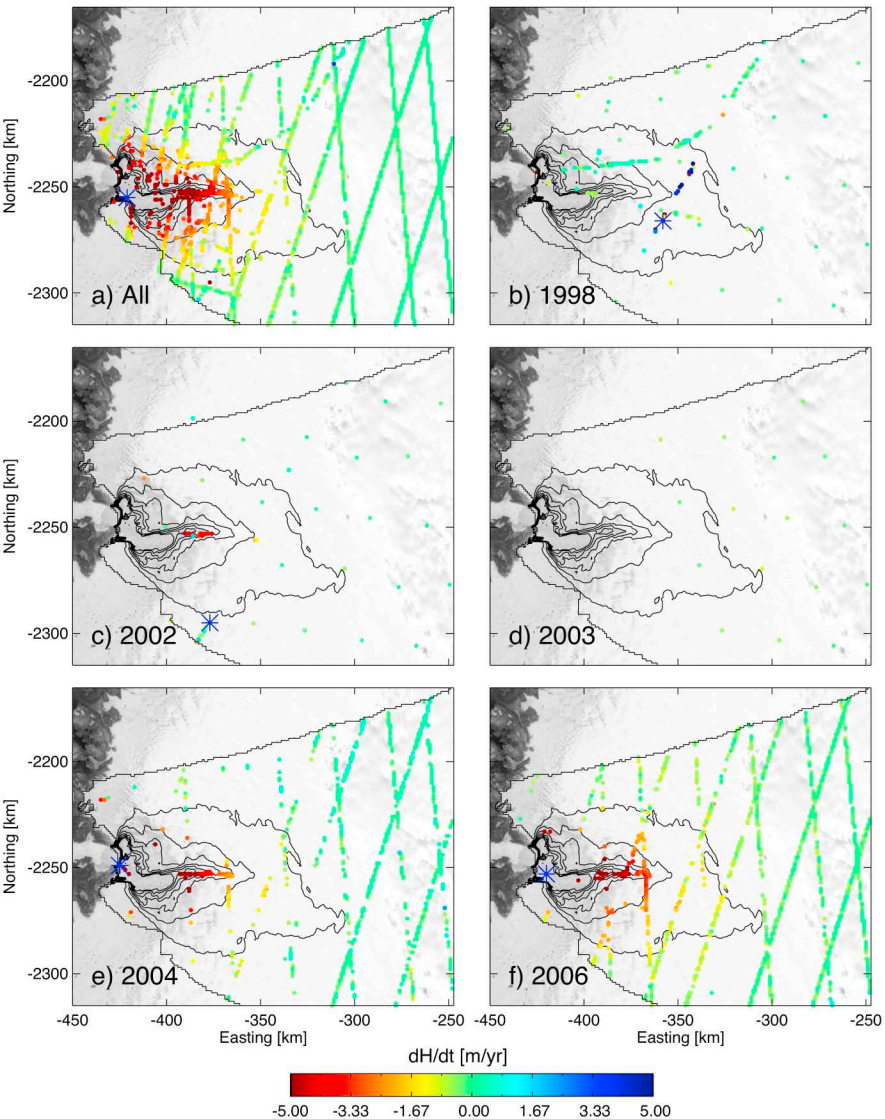
**Table 4.** Volume change estimates for Jakobshavn Isbræ.

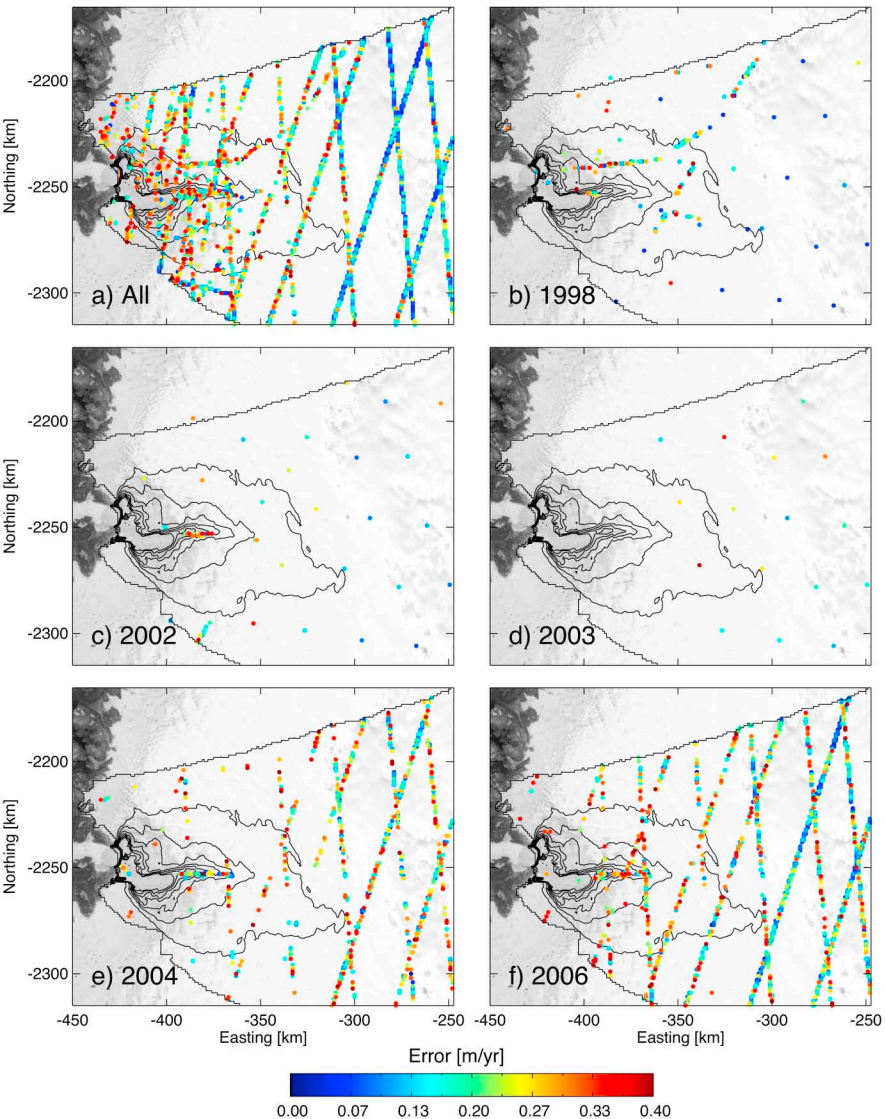
Period	OK	KED	ST-OK	ST-KED
1999–2007	-13.6	-15.2	-7.6	-11.1
2003–2007	-16.2	-18.7	-17.5	-20.5
1996	18.1	17.3	16.2	16.8
1997	9.0	9.1	9.0	9.5
1998	-5.9	-5.0	-5.5	-4.9
1999	5.9	7.1	4.7	5.4
2000	6.1	6.3	5.2	5.1
2001	5.0	2.7	1.6	-5.3
2002	5.8	2.7	7.2	-2.4
2003	-13.7	-12.2	-20.1	-25.2
2004	-14.1	-20.0	-11.1	-13.3
2005	-12.1	-13.3	-13.5	-15.5
2006	-17.8	-20.9	-18.9	-21.0
2007	-23.1	-27.1	-23.8	-27.4

Volume change estimates are shown in  $\text{km}^3 \text{yr}^{-1}$  for individual years 1996–2007, as well as averaged over the periods 1999–2007 and 2003–2007.

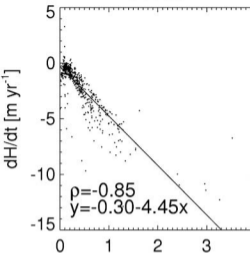




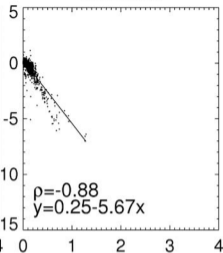




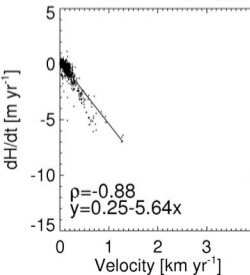
ATM



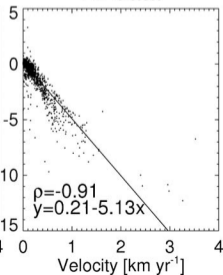
ICESat



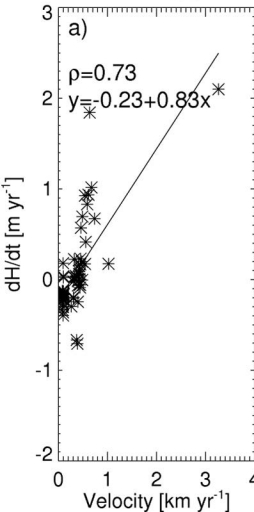
ERS-2 + ICESat



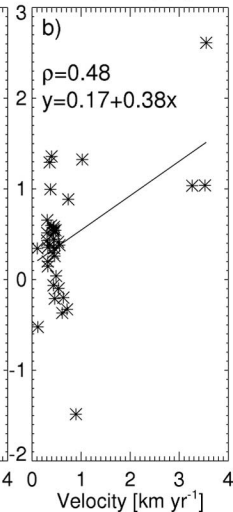
All data



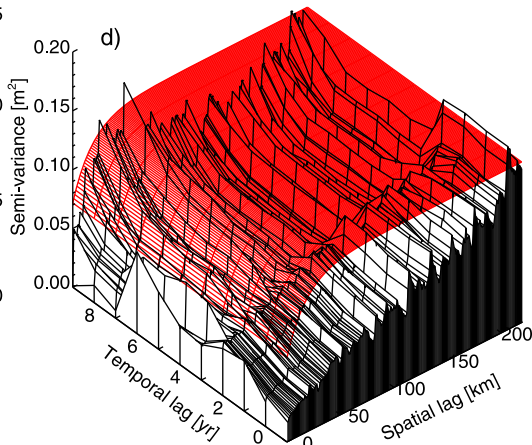
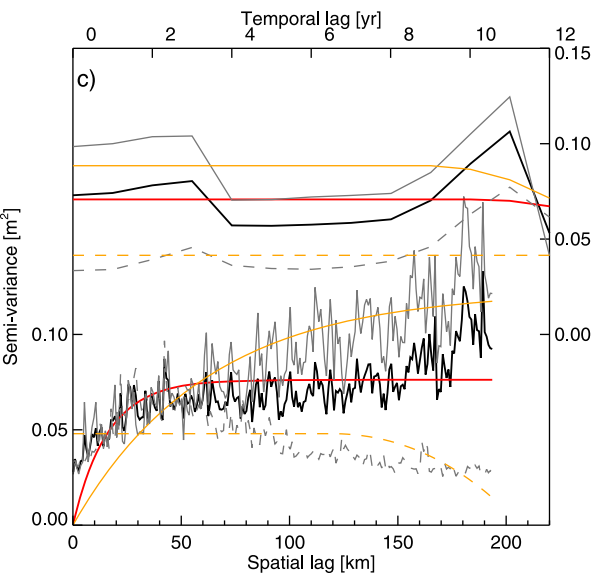
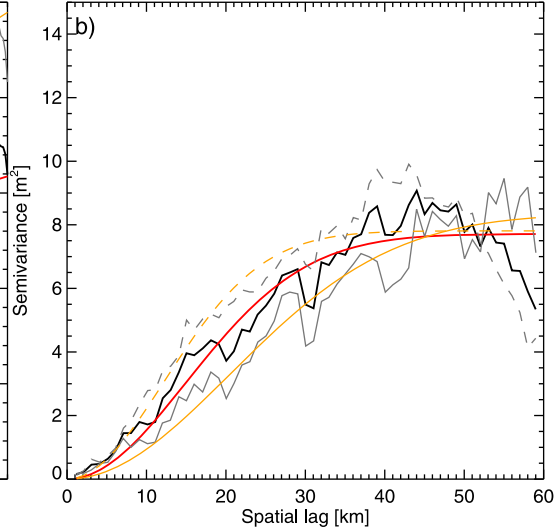
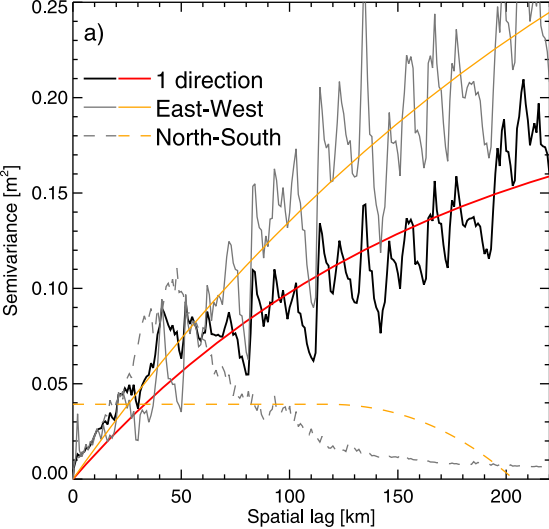
ATM 1994

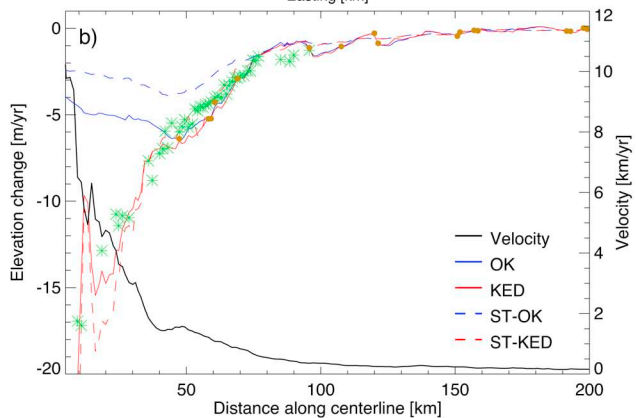
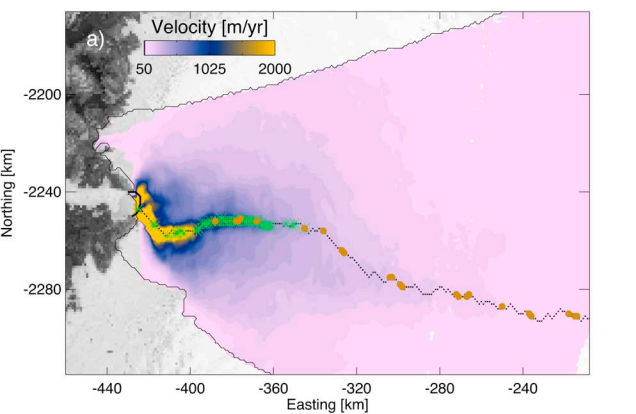


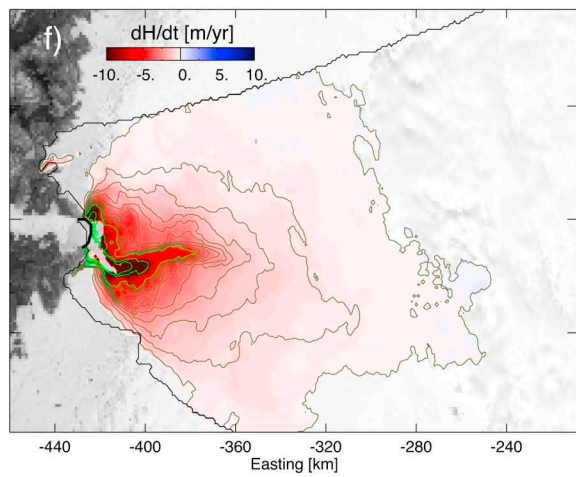
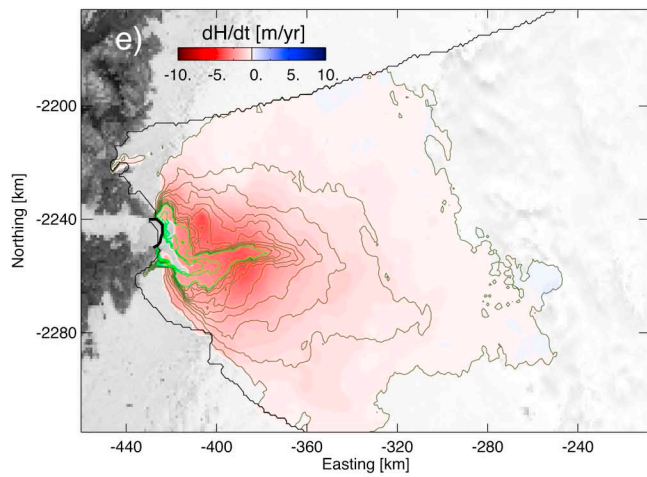
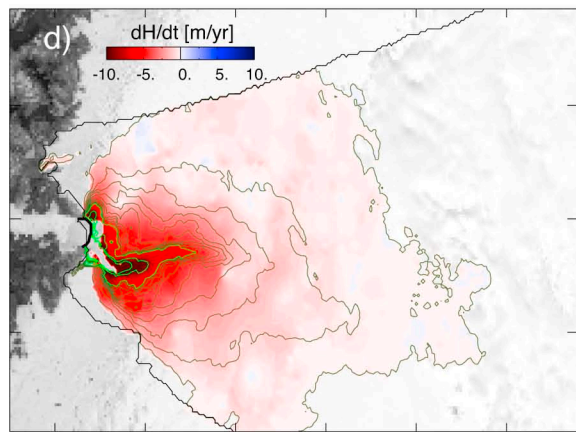
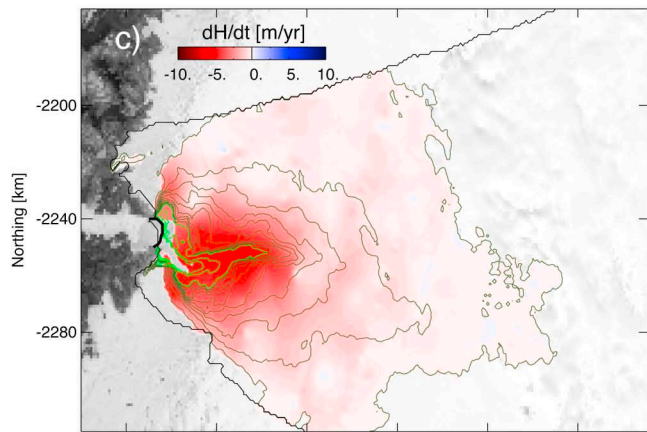
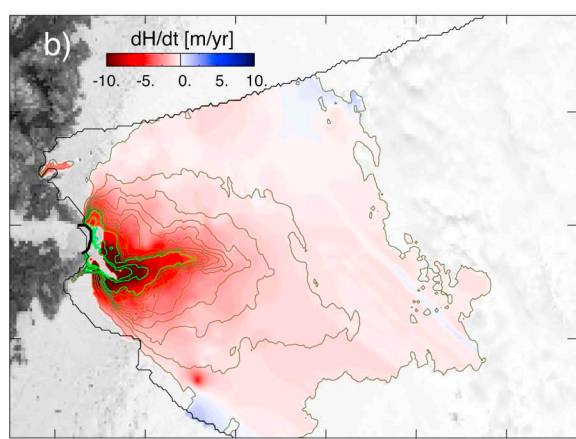
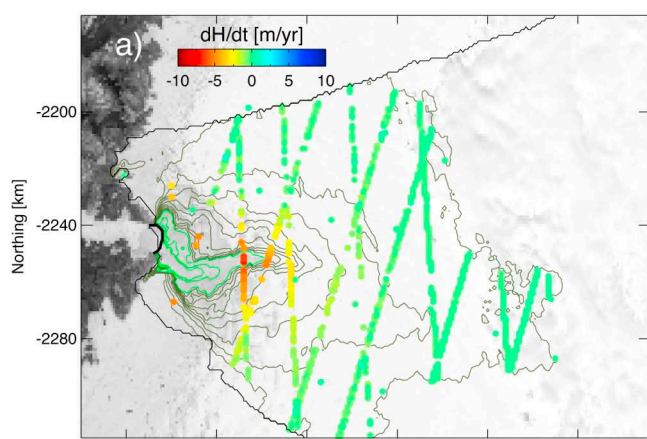
ATM 1996

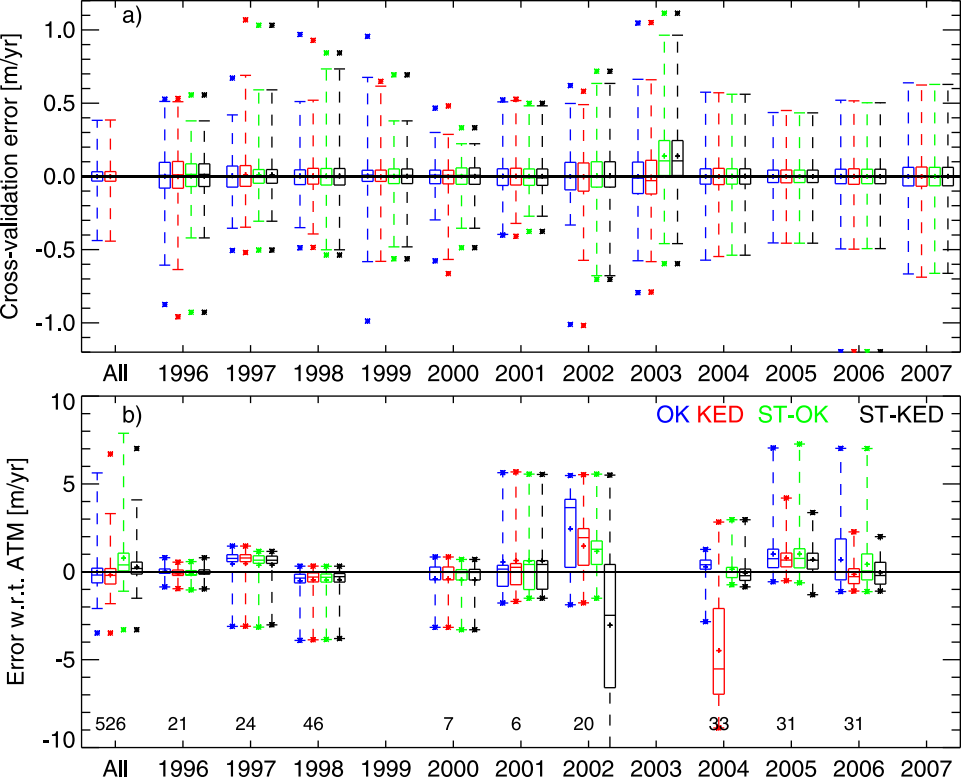












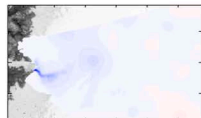
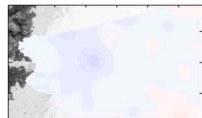
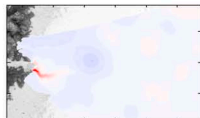
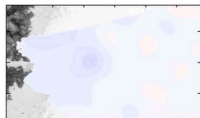
OK

KED

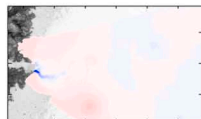
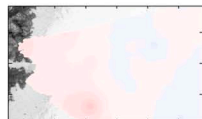
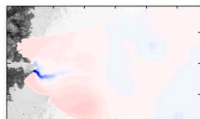
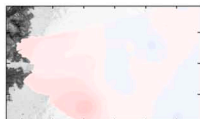
ST-OK

ST-KED

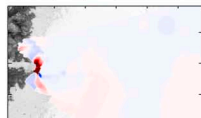
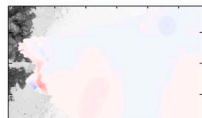
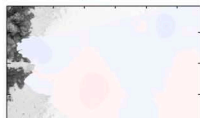
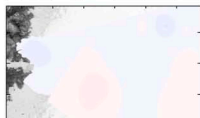
1996



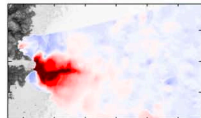
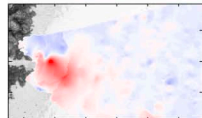
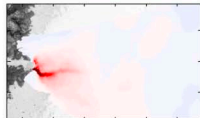
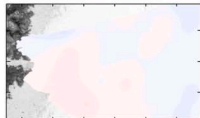
1998



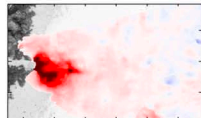
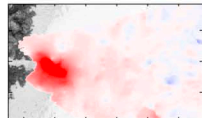
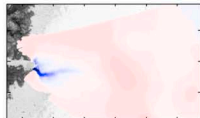
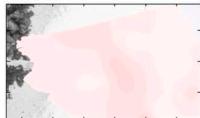
2000



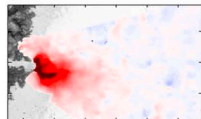
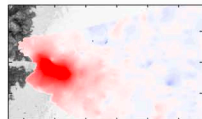
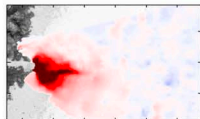
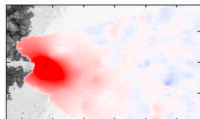
2002



2003



2004



2005

