

## Experimental poisoning by *Baccharis megapotamica* var. *weirii* in buffalo

Oliveira-Filho, José C.; Carmo, Priscila M.S.; Iversen, Anita; Nielsen, Kristian Fog; Barros, Claudio S. L.

*Published in:*

Pesquisa Veterinaria Brasileira

*Publication date:*

2012

*Document Version*

Publisher's PDF, also known as Version of record

[Link back to DTU Orbit](#)

*Citation (APA):*

Oliveira-Filho, J. C., Carmo, P. M. S., Iversen, A., Nielsen, K. F., & Barros, C. S. L. (2012). Experimental poisoning by *Baccharis megapotamica* var. *weirii* in buffalo. *Pesquisa Veterinaria Brasileira*, 32(5), 383-390.

## DTU Library

Technical Information Center of Denmark

---

### General rights

Copyright and moral rights for the publications made accessible in the public portal are retained by the authors and/or other copyright owners and it is a condition of accessing publications that users recognise and abide by the legal requirements associated with these rights.

- Users may download and print one copy of any publication from the public portal for the purpose of private study or research.
- You may not further distribute the material or use it for any profit-making activity or commercial gain
- You may freely distribute the URL identifying the publication in the public portal

If you believe that this document breaches copyright please contact us providing details, and we will remove access to the work immediately and investigate your claim.

## Experimental poisoning by *Baccharis megapotamica* var. *weirii* in buffalo<sup>1</sup>

José C. Oliveira-Filho<sup>2</sup>, Priscila M.S. Carmo<sup>2</sup>, Anita Iversen<sup>3</sup>, Kristian F. Nielsen<sup>3</sup> and Claudio S.L. Barros<sup>4\*</sup>

**ABSTRACT.**- Oliveira-Filho J.C., Carmo P.M.S., Iversen A., Nielsen K.F. & Barros C.S.L. 2012. **Experimental poisoning by *Baccharis megapotamica* var. *weirii* in buffalo.** *Pesquisa Veterinária Brasileira* 32(5):383-390. Departamento de Patologia, Universidade Federal de Santa Maria, Camobi, Santa Maria, RS 97105-900, Brazil. E-mail: [claudioslbarros@uol.com.br](mailto:claudioslbarros@uol.com.br)

Five male 6-8 month-old Murrah buffalo calves were orally dosed with the fresh aerial parts of *Baccharis megapotamica* var. *weirii* at doses of 1, 3, 4, 5 and 10g/kg body weight (bw) (~1-10mg macrocyclic trichothecenes/kg/bw). The *B. megapotamica* used for the experiment was harvested on a farm where a recent spontaneous outbreak of poisoning caused by such plant had occurred. Clinical signs appeared 4-20 hours and 4 buffaloes died 18-49 hours after the ingestion of the plant. Clinical signs were apathy, anorexia, and watery diarrhea, fever, colic, drooling, muscle tremors, restlessness, laborious breathing and ruminal atony, and dehydration. The most consistent gross findings were restricted to the gastrointestinal (GI) tract consisted of varying degrees of edema and reddening of the mucosa of the forestomach. Histopathological findings consisted of varying degrees of necrosis of the epithelial lining of the forestomach and of lymphocytes within lymphoid organs and aggregates. Fibrin thrombi were consistently found in sub-mucosal vessels of the forestomach and in the lumen of hepatic sinusoids. It is suggested that dehydration, septicemia and disseminated intravascular coagulation participate in the pathogenesis of the intoxication and play a role as a cause of death. A subsample of *B. megapotamica* var. *weirii* was frozen-dried and ground and analyzed using UHPLC (Ultra High Performance Liquid Chromatography) with high resolution Time of Flight mass spectrometry and tandem mass spectrometry, it was shown that the plant material contained at least 51 different macrocyclic trichothecenes at a total level of 1.1-1.2mg/g. About 15-20% of the total trichothecenes contents was found to be monosaccharide conjugates, with two thirds of these being glucose conjugates and one third constituted by six aldopentose conjugates (probably xylose), which has never been reported in the literature.

**INDEX TERMS:** Poisonous plants, *Baccharis megapotamica*, buffalo, experimental plant poisoning, necrosis in forestomach, lymphoid tissue necrosis, macrocyclic trichothecenes, chemical analysis.

<sup>1</sup> Received on December 12, 2011.

Accepted for publication on December 29, 2011.

Part of the Doctoral Thesis of the senior author. Part of this study was carried out in the Centro de Ciências e Tecnologia Rural, of the Federal University of Campina Grande, Patos, Paraíba. During a 12-month fellowship granted to the first author by the Program on Academic collaboration (PROCAD-NF) from CAPES. And the costs of the present publication were covered by the same source.

<sup>2</sup> Post-Graduate Program in Veterinary Medicine, Major in Veterinary Pathology, Centro de Ciências Rurais (CCR), Universidade Federal de Santa Maria (UFSM), Camobi, Santa Maria, RS 97105-900, Brasil.

<sup>3</sup> Center for Microbial Biotechnology, Institute for Systems Biology, Technical University of Denmark, Søtofts Plads, Building 221, DK-2800 Kgs. Lyngby, Denmark.

<sup>4</sup> Laboratório de Patologia Veterinária, Departamento de Patologia, Centro de Ciências da Saúde, UFSM, Santa Maria, RS 97105-900. Pesquisador 1A do CNPq. \*Corresponding author: [claudioslbarros@uol.com.br](mailto:claudioslbarros@uol.com.br)

**RESUMO.**- [Intoxicação experimental por *Baccharis megapotamica* var. *weirii* em búfalos.] As partes aéreas verdes de *Baccharis megapotamica* var. *weirii* foram administradas oralmente a cinco búfalos da raça Murrah de 6-8 meses de idade nas doses de 1, 3, 4, 5 e 10g/kg de peso corporal (pc) (~1-10mg de tricótecos macrocíclicos/kg/pc). A planta usada no experimento foi colhida numa fazenda onde um surto recente de intoxicação espontânea por essa planta havia ocorrido. Nos búfalos deste experimento, os sinais clínicos apareceram 4-20 horas e 4 búfalos morreram 18-49 horas após a ingestão da planta. Os sinais clínicos consistiram de apatia, anorexia, diarreia aquosa, febre, cólica, salivação, tremores musculares, inquietação, respiração laboriosa, atonia ruminal e desidratação. Os achados

macroscópicos mais consistentes estavam restritos ao trato gastrointestinal (GI) e consistiram de graus variados de edema e avermelhamento da mucosa dos pré-estômagos. Os achados histopatológicos consistiam de vários graus de necrose do epitélio de revestimento dos pré-estômagos e de linfócitos em agregados e órgãos linfóides. Trombos de fibrina foram consistentemente encontrados nos vasos da submucosa dos pré-estômagos e na luz dos sinusoides hepáticos. É sugerido que desidratação, septicemia e coagulação intravascular disseminada participem da patogênese da intoxicação e sejam fatores responsáveis pela morte dos animais afetados pela intoxicação. Uma subamostra de *B. megapotamica* var. *weirii* foi congelada a seco, moída e analisada usando UHPLC (Cromatografia Líquida de Ultra Alta Performance) com espectrometria de tempo-de-vôo de alta resolução e espectrometria de massa em tandem. Foi demonstrado que o material de planta analisado continha pelo menos 51 tricotecnos macrocíclicos diferentes num nível total de 1,1-1,2mg/g. Cerca de 15-20% do conteúdo total de tricotecnos eram conjugados de monossacarídeos, sendo dois terços desses, conjugados de glicose e um terço constituídos por seis conjugados de aldopentose (provavelmente xilose), o que nunca tinha sido antes relatado na literatura.

**TERMOS DE INDEXAÇÃO:** Plantas tóxicas, *Baccharis megapotamica*, búfalo, intoxicação experimental por planta, necrose dos pré-estômagos, necrose do tecido linfóide, tricotecnos macrocíclicos, análise química.

## INTRODUCTION

The *Baccharis* genus (Asteraceae: tribe Asteraceae) includes nearly 500 species. All are found in the New World with the exception of *B. halimifolia*, which was introduced into Australia from the United States (Jarvis et al. 1991). This species is suspected of poisoning cattle in both countries (Everist 1981) and proved toxic when administered experimentally to chicks (Duncan et al. 1957). *B. glomerulifolia*, another North American species, was experimentally toxic to mice and chicks (Duncan et al. 1957), and *B. pteronioides* has been associated with cattle poisoning in the southwestern United States (Marsh et al. 1920, Stegelmeier et al. 2009). *B. pteronioides* toxicosis was produced in hamsters dosed with 100-200mg of the plant (Stegelmeier et al. 2009). *B. artemisioides* causes disease in cattle in a restricted zone of Argentina, northwest of Buenos Aires and southeast of Cordoba (Rizzo et al. 1997).

Nearly 120 species of *Baccharis* have been recorded in Brazil; of those, only *B. coridifolia* (Tokarnia & Döbereiner 1975, Barros 1998) and *B. Megapotamica* (Tokarnia et al. 1992, Driemeier et al. 2000, Pedroso et al. 2010) have been proven to be toxic to livestock. Both *B. megapotamica* and *B. coridifolia* are found in southern Brazil, but they occupy different habitats; *B. megapotamica* is found in marshy areas (Tokarnia et al. 1992) whereas *B. coridifolia* grows in pastureland (Barros 1998). Two varieties of *B. megapotamica* with essentially the same distribution and toxic effects on livestock are known, namely *B. megapotamica* var. *megapotamica* and *B. megapotamica* var. *weirii* (Tokarnia et al. 1992).

*B. coridifolia* and the two varieties of *B. megapotamica* cause a severe acute poisoning in livestock characterized by degeneration and necrosis of the epithelial lining of gastrointestinal tract and necrosis of lymphocytes in lymph nodes, spleen, tonsils, and several lymphoid aggregates (Tokarnia & Döbereiner 1975, Tokarnia et al. 1992, Barros 1998, Varaschin et al. 1998, Varaschin & Alessi 2003). *B. megapotamica* (Kupchan et al. 1977) *B. coridifolia*, (Busam & Habermehl 1982, Habermehl et al. 1985) and *B. artemisioides* (Rizzo et al. 1997) contain a series of potent cytotoxic agents belonging to the highly cytotoxic macrocyclic trichothecene complex previously believed to be produced only by fungi (Jarvis et al. 1996). In the case of *B. megapotamica*, the macrocyclic trichothecenes accumulate in the plant as baccharinoids (B1, B2, B3, B4 etc.), roridins including their glycosides, and mitotoxins (Jarvis et al. 1996). To date, no macrocyclic trichothecenes have been detected in *B. halimifolia*, *B. pteronioides*, or *B. glomerulifolia*.

Spontaneous poisoning by *B. coridifolia* occurs frequently in cattle (Rissi et al. 2005) occasionally in sheep (Rozza et al. 2006) and rarely in horses (Alda et al. 2009). Isolated reports of spontaneous outbreaks involving *B. megapotamica* var. *weirii* have been reported in cattle (Driemeier et al. 2000) sheep (Pedroso et al. 2010) and buffaloes (Oliveira-Filho et al. 2011). There are also some anecdotal accounts of spontaneous toxicosis by *B. megapotamica* var. *weirii* in cattle. Typically, the toxicosis in livestock occurs when naïve animals raised in areas free of *Baccharis* spp. are transferred to pastures infested by the plant. The susceptibility increases considerably if the animals are subjected to such stress factors as fatigue, hunger, or thirst (Barros 1998). Interestingly, cattle that are raised in pastures where *Baccharis* spp. exist will graze it very rarely if ever, although in the case of *B. megapotamica* var. *weirii* there are anecdotal accounts that particularly hungry cattle familiar with the plant, may, on occasion, ingest it and get poisoned.

A recent outbreak of *B. megapotamica* var. *weirii* poisoning in buffalo diagnosed at our laboratory (Oliveira-Filho et al. 2011) prompted the undertaking of the current experimental study to determine the clinical and pathological aspects of the *B. megapotamica* var. *weirii* poisoning in buffaloes, the pathogenesis of the toxicosis and the toxic principles involved in this plant.

## MATERIALS AND METHODS

Five male 6-8-month-old, 122-143 kg Murrah buffaloes identified by numerals 1-5 were used in the experiment. Each buffalo was force-fed orally with a single dose of fresh *Baccharis megapotamica* var. *weirii* respectively at doses of 1, 3, 4, 5 and 10g/body weight (bw) (Table 1). Only the top 10cm of the aerial parts of the plant were fed to the buffaloes. Just before the administration of the plant and every four hour after the dosing, the buffaloes were clinically evaluated for the following parameters: respiratory and cardiac rates, rectal temperature, time of capillary filling, ruminal movements, posture, ambulation and behavioral changes. During the whole duration of the experiment the buffalo were kept in a fenced paddock and were offered Tifton hay and water *ad libitum*.

For the experiment, specimens of *B. megapotamica* var. *weirii* were harvest in a farm in the municipality of Diler-

**Table 1. Experimental poisoning by *Baccharis megapotamica* var. *weirii* in buffalo**

Buffalo	Weight (kg)	Dose of plant administered (g/kg) <sup>a</sup>	Time spent in the administration of the plant	Severity of clinical signs	Time between the terminus of the ingestion of the plant and death
1	143	10g	2h15min	+++ <sup>b</sup>	18h30min
2	132	5g	55 min	+++	19h45min
3	135	4g	1h05min	+++	49h5min
4	122	3g	1h33min	+++	21h40min
5	146	1g	30 min	+ <sup>c</sup>	Survived

<sup>a</sup>All administrations of the plant were in single doses, <sup>b</sup>(+++ marked, <sup>c</sup>(+) mild.

mando de Aguiar, state of Rio Grande do Sul, Brazil, from where a spontaneous outbreak of *B. megapotamica* var. *weirii* was recently reported (Oliveira-Filho et al. 2011)<sup>5</sup>. The harvest plant was kept at 4°C until fed to the experimental buffalo; the time elapsed from the harvesting and the feeding was never longer than 48 hours.

For chemical analysis plant material was frozen-dried and ground to a fine powder using a domestic coffee mill; then 0.50±0.01g material was distributed into 15ml Falcon tubes, 6.5ml 55% MeOH was added and the tubes placed on a shaking table for 4 hr. Tubes were then centrifuged at 7000 g for 3 minutes and 4.5ml of the supernatant transferred to new tubes and evaporated to dryness with N<sub>2</sub>. Samples were then redissolved in 50% methanol and filtered through a 0.45µm teflon syringe filter into an autosampler vial.

Quantification was done in spiked matrix, by spiking ground freeze dried material with 75 µl methanol solution containing roridin A (leaving to dry for 2 hr) to a final concentration of 375, 188, 94, 47, 23, 12, 5.9, 2.9, 1.5, 0.73, and 0.37mg/kg, as well as 3 un-spiked matrix samples.

A few extracts (from 2-3g material) were further extracted and purified by redissolving the extract in dichloromethane and subsequently passing the extract through a polyethylene imine silica column (Jarvis 1992, Jarvis et al. 1996). The column was eluted with dichloromethane (fraction 1) and methanol (fraction 2). These were both evaporated to dryness with N<sub>2</sub> and redissolved as above.

Samples were analysed by Ultra High Performance Liquid chromatography-high resolution mass spectrometry (UHPLC-HRMS) on a maXis G3 quadrupole time of flight mass spectrometer (Bruker Daltonics, Bremen, Germany) equipped with an electrospray (ESI) source. The MS was connected to an Ultimate 3000 UHPLC system (Dionex, Sunnyvale, CA). Separation of 1µl samples were performed at 40 °C on a 100mm × 2.1mm ID, 2.6µm Kinetex C<sub>18</sub> column (Phenomenex, Torrance, CA) using a linear water-acetonitrile gradient (both buffered with 20mM formic acid) at a flow of 0.5mL/min starting from 20% acetonitrile and increased to 65% in 10% minutes, then 1 min to 100%, keeping this 2 min, keeping this for 3 minutes. HRMS was performed in ESI<sup>+</sup> with a data acquisition range of 10 scans per sec at m/z 100-1000. The MS was calibrated using sodium formate automatically infused prior to each analytical run,

this provided a mass accuracy of less than 1.5ppm in MS mode. Trichothecenes were detected as extracted ion chromatograms (±0.002 Da) of the [M+H]<sup>+</sup> ion with [M+NH<sub>4</sub>]<sup>+</sup> and [M+Na]<sup>+</sup> used as qualifiers. The monosaccharide conjugated trichothecenes were detected as [M+NH<sub>4</sub>]<sup>+</sup> and [M+Na]<sup>+</sup> ions. Tandem experiments were conducted on the [M+H]<sup>+</sup> and [M+NH<sub>4</sub>]<sup>+</sup> ions with a collision energy of 20-30 eV and nitrogen as collision gas. Reference standards of trichodermin, roridins E, -H, and L-2, verrucarins J, -A and -H, satratoxins G, -H, and iso-F, trichoverrols A and B, as well as trichoverrins A and B were all co-analyzed with the samples. Extracted ion chromatograms were constructed for all trichothecenes known from *Baccharis* and *Myrothecium* species as noted in Antibase2010 (Nielsen et al. 2011), as well as for baccharinoids, miophytocens, miotoxins and trichothecenes (Jarvis et al. 1988, 1991, 1996, Jarvis 1992) including several glucose conjugated trichothecenes.

Blood Samples were collected from the jugular vein of the experimental buffalo for complete blood count, proteinogram, and determination of seric activity of aspartate transaminase (AST), and determination of fibrin degradation products (FDPs). Hemoculture were performed in blood samples drawn aseptically from Buffalo 1 and 3 after they presented overt clinical signs of intoxication.

All buffalo were necropsied and several tissue samples were collected during the necropsies and fixed in 10% buffered formalin, processed routinely for histopathology and stained by hematoxylin and eosin. Selected samples of liver and kidney were stained by Fraser-Lendrum method for the demonstration of fibrin; in this method fibrin, keratin, and some cytoplasmic granules appear red, erythrocytes appear orange, and collagen appears green.

For histopathological evaluation of the epithelial changes in the gastrointestinal tract fragments of the following organs were sampled: ruminoreticulum (dorsal sac, ventral sac, reticular fold, cranial pillar, caudoventral blind sac, and caudodorsal blind sac), omasum, abomasum, duodenum, jejunum, ileum, proximal colon, spiral colon, cecum, and rectum. For histopathological evaluation of the lymphoid system fragments of following organ/tissues were sampled: tonsils, spleen, gut associated lymphoid tissue, bronchial associated lymphoid tissue; and 10 lymph nodes (prescapular, axilar, mandibular, popliteal, gastric, jejunal, hepatic, bronchial, internal iliac, and renal).

## RESULTS

Chemical analysis of the plant revealed 51 one different major macrocyclic trichothecenes; the major peaks are

<sup>5</sup> Identification of the plant as *Baccharis megapotamica* var. *weirii* was made by Prof. José Newton Marchiori from the Departamento de Ciências Florestais, Centro de Ciências Rurais, Federal University of Santa Maria, Brazil.

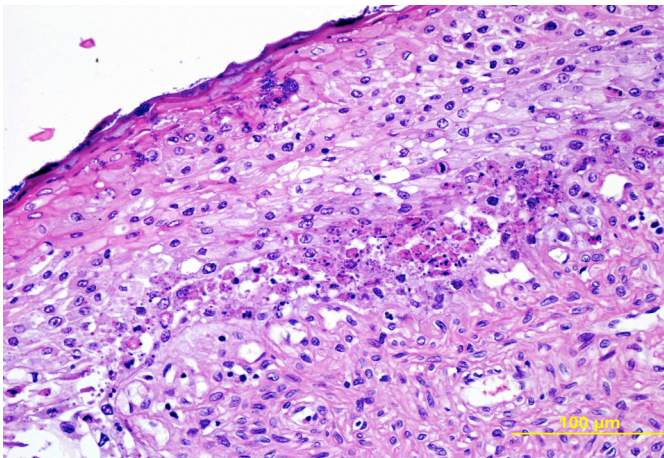




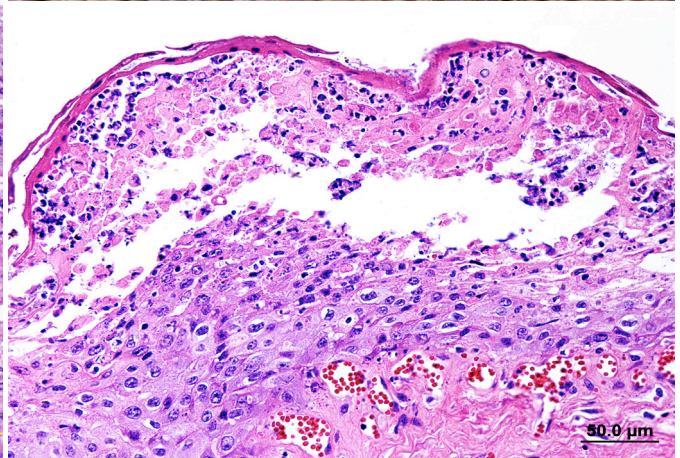
4



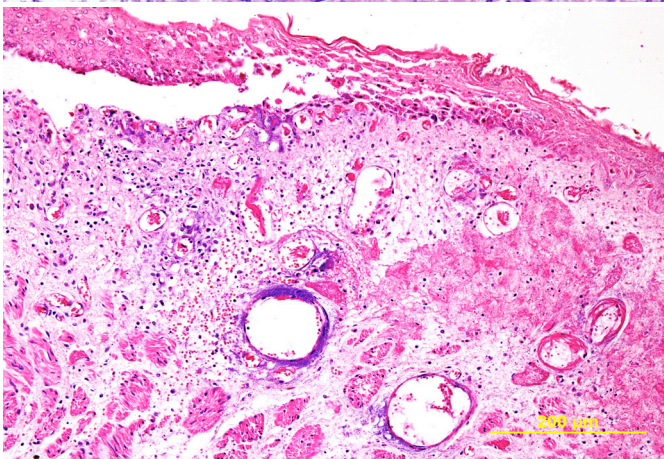
5



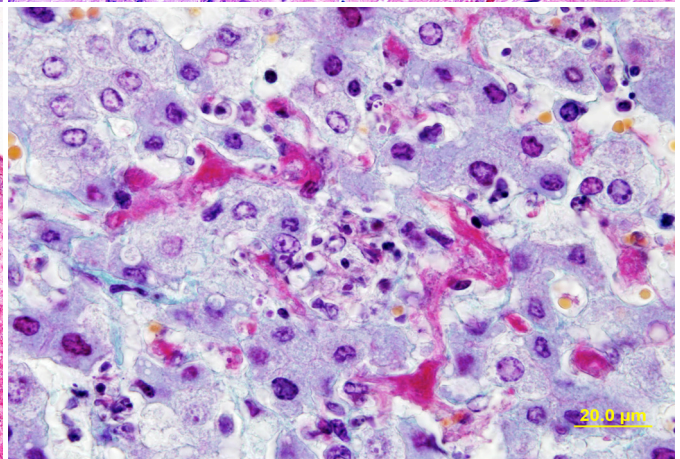
6



7



8



9

Fig.4. Reddening of the mucosa of the forestomach from Buffalo 3 experimentally poisoned by *Baccharis megapotamica* var. *weirii*.

Fig.6. Necrosis of the basal layer of the lining squamous stratified of the ventral sac of the rumen of Buffalo 2 experimentally poisoned by *Baccharis megapotamica* var. *weirii*. HE, obj.40x.

Fig.8. Reticular fold of Buffalo 4 experimentally poisoned by *Baccharis megapotamica* var. *weirii*. Bacterial aggregates can be observed surrounding blood vessels of the submucosa which is marked edematous. HE, obj.20x.

Fig.5. Reddening of the mucosa of the reticulum from Buffalo 1 experimentally poisoned by *Baccharis megapotamica* var. *weirii*.

Fig.7. Necrosis of the full thickness of the ruminal squamous stratified epithelium of the dorsal sac of the rumen of a Buffalo 3 experimentally poisoned by *Baccharis megapotamica* var. *weirii*. HE, obj.40x.

Fig.9. Histopathology of the liver of Buffalo 1 experimentally poisoned by *Baccharis megapotamica* var. *weirii*. Fibrin thrombi are observed in the lumen of hepatic sinusoids. Fibrin are stained red, erythrocytes appear orange, and scant collagen appears green. Fraser-Lendrum stain, obj.40x.

gregates were found over the forestomach epithelial deprived submucosa and in one case surrounding blood vessels of the submucosa (Fig.8). Fibrin thrombi were consistently

found in submucosal vessels of the forestomach and in the lumen of hepatic sinusoids. These thrombi were positive for fibrin by the Fraser-Lendrum method (Fig.9).

The necrosis in the epithelial lining of the forestomach were more intense in the following order of decreasing intensity: reticular fold, ruminal ventral sac, ruminal caudoventral blind sac, ruminal cranial pillar, reticulum, caudodorsal blind sac, dorsal sac, and omasum. In reticular fold of one animal (Buffalo 1) there was also necrosis of the smooth muscle layer beneath the areas of epithelial necrosis. Mild necrosis (Buffalo 2 and 3) were observed in the parietal cells of the abomasal mucosa.

Hepatic necrosis was observed in the four buffalos that died due to the intoxication. It consisted of multifocal individual foci of necrosis or individual hepatocellular necrosis. In on animal (Buffalo 3) the necrosis was more prominent in the hepatocytes adjacent to the portal triads. In two cases (Buffalo 1 and 3) diffuse moderate cytoplasmic vacuolization was observed.

Necrosis of lymphocytes (Fig.10) was observed in all four buffalo dying from the intoxication and in all lymphoid organ/tissues sampled. The intensity of lymphocyte necrosis was dose dependent and varied depending of the type o lymphoid tissue examined, being more prominent in the gut associated lymphoid aggregates and in the jejunal and mesenteric lymph nodes.

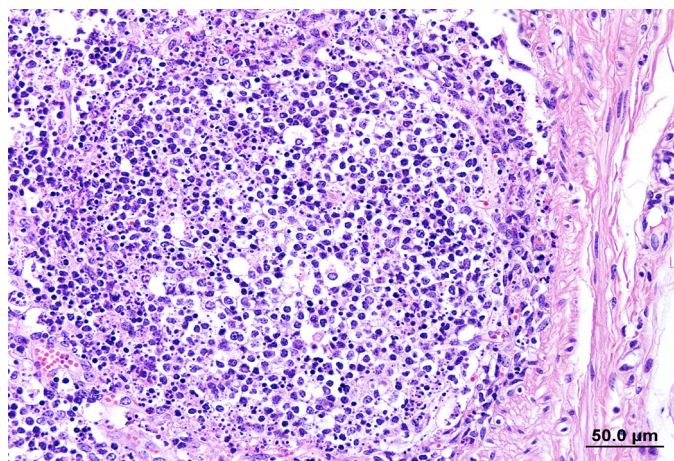


Fig.10. Histopathology showing necrosis of lymphoid lymphocytes in follicles of the lymphoid tissue in experimentally poisoning by *Baccharis megapotamica* var. *weirii* in buffalo. (A) Internal iliac lymph node of Buffalo 3. HE, obj.40x. (B) Tonsil of Buffalo 2. HE, obj.20x.

## DISCUSSION

The clinical signs, clinical course, gross findings and histopathology observed in the buffalo of the current study are similar to those described in the naturally occurring *Baccharis megapotamica* var. *weirii* poisoning by in buffalo (Oliveira-Filho et al. 2011) in cattle (Driemeier et al. 2000) and sheep (Pedroso et al. 2010) and the experimental intoxication in cattle with this plant species (Tokarnia et al. 1992). The lesions are also similar to those produced by *B. coridifolia* in cattle (Tokarnia & Döbereiner 1975, Barros 1998, Rissi et al. 2005) and sheep (Rozza et al. 2006). Mild intoxication was induced by a dose as small as 1g/kg/bw; however the smallest lethal dose of tested dose was 3g/kg/bw. This indicates that buffalo are somewhat more resis-

tant to poisoning by *B. megapotamica* var. *weirii* than cattle (*Bos taurus*) since an oral dose of 1g/kg/bw of this plant was lethal to bovine (Tokarnia et al. 1992).

The primary target organs in this poisoning are those of GI, especially the forestomach and the lesions are grossly characterized by reddening of the mucosal surface of these gastric compartments and submucosal edema. Characteristic histopathology includes necroses of the epithelial lining of the forestomach and to a lesser extent abomasum and intestines and necrosis of lymphocytes in lymphoid organs and lymphoid aggregates. These lesions are in accordance with the described fort the action of macrocyclic trichothecenes (Jarvis et al 1996, Varaschin et al. 1998, Varaschin & Alessi 2003).

The pathogenesis and cause of death in *Baccharis* spp. in livestock was never completely resolved (Barros 1998, Rissi et al. 2005). It was suggested that dehydration, electrolyte imbalance and septicemia stemming from bacterial invasion through breakdowns in necrotic ruminal epithelium (Rissi et al. 2005) and disseminated vascular coagulation (Stegelmeier et al. 2009) could play a part. Data from the current experiment suggest that several of these mechanisms of disease production could act concomitantly or in sequence in the pathogenesis and cause of death of buffalo experimentally poisoned by *B. megapotamica* var. *weirii*. Dehydration was clearly a participante as judged by the hemoconcentration as demonstrated in Table 2 by radi and marked elevation in the packed cell volumes and total protein concentration in the serum. These are classical signs of dehydration (Smith and Magdesian 2002, Fettman 2006) and were not observed only in the one buffalo (Buffalo 5) which developed just a mild form o intoxication and survived.

Evidences of disseminated intravascular coagulation (DIC), a serious manifestation of abnormal coagulation (Morris 2002) was observed in all experimental animals excepting Buffalo 5. This was reflected in the sharp increase in fibrin degradation products which were detected in the serum of the four buffaloes that died. DIC is a severe break down in the hemodynamic homeostasis caused by the generation of excess thrombin. There are many causes, inducing diffuse vascular damage which results in exposure of blood to tissue factor (Mosier 2011). In the case of the four buffalo that died it was possible to detect thrombi formation in the liver by the method of Fraser-Lendrum and those are associated with foci of liver necrosis; thus generation of tissue factor in response to

**Table 2. Laboratory data from blood of five buffalo poisoned by *Baccharis megapotamica* var. *weirii* in buffalo**

Buffalo	PCV <sup>a</sup>		Total plasma protein		AST <sup>b</sup>		FDPs <sup>c</sup>	
	PE <sup>d</sup>	AE <sup>e</sup>	PE	AE	PE	AE	PE	AE
1	39	48	6.5	8.5	567	917	2.211	>120.086
2	35	42	7.2	8.9	346	5.497	6.617	>247.365
3	39,5	54,5	7.1	7.8	558	647	3.796	9.171
4	40	54	7.3	9.4	194	775	2.219	>229.461
5	40	37	7.5	7.1	339	341	6.592	4.139

<sup>a</sup> Packed cell volume, <sup>b</sup> aspartate transaminase, <sup>c</sup> fibrin degradation products, <sup>d</sup> pre-experiment sample, <sup>e</sup> sample taken after the administration of the plant a just hours before death of the buffalo.

necrosis endothelial cells and hepatocytes is a distinct possibility, resulting in tissue factor-induced activation of extrinsic coagulation to produce thrombin. Thrombin causes platelet aggregation and activation of coagulation factors V, VIII, and I to form fibrin, could result in the widespread microvascular clots observed in three cases. Concurrently, the high levels of thrombin stimulate clot dissolution by binding to thrombomodulin to activate protein C, by converting plasminogen into plasmin, and by binding to anti-thrombin III to become inactivated. The widespread nature of the coagulation response results in the consumption of these and other factors, resulting in widespread hemorrhages. Although hemorrhages were not seen in the buffalo of this study, this could be explained by the extremely short course of the disease.

Evidences of septicemia could be observed in Buffalo 1 from which bacterial culture of the blood yield non-enterococci *Streptococcus* Group; Bacteria of this group D can cause septicemia, among other clinical dysfunctions (Greene & Prescott 2006). Some findings in the experimental buffalo of this study as fever and bacterial aggregates surrounding blood vessels or associated with b reached ruminal epithelium are consistent with septicemia plain a role in this intoxication.

UHPLC with high resolution Time of Flight mass spectrometry proved to be a powerful technique for the analysis of the macrocyclic trichothecenes in plant extracts detecting 51 different major macrocyclic trichothecenes. The major findings were Baccharin B2/B1/4, Baccharinoid B12/B17, iso-baccharin/baccharin and the conjugate xylose-roridin L-2. Out of 14 available trichothecene standards only 2 (roridins E and A) could be detected in the samples. Trichothecenes found in the sample with no possibility of standard matching were identified tentatively on the basis of the MS/MS with spectra showing a fragmentation pattern (accurate mass) consistent with macrocyclic trichothecenes (Nielsen et al. 2011). These identification points included several water loss ions as well as the m/z 231 and 249 ions seen from macrocyclic trichothecenes, or m/z 229 and 247 seen in case of hydroxylation of the trichothecene skeleton. Interestingly neither verrucarins nor roridin L-2 were detected. Expressed as roridin A equivalents the 51 macrocyclic trichothecenes summed up to a total content of 1.1-1.2mg/g which is in the same range found by Jarvis et al (1996) where 0.04-0.7mg/g was detected. Using MS/HRMS and in-source fragmentation, 15-20% of the total trichothecenes contents was found to be conjugated to a glucose (seen by the loses of a glucose moiety) also found by Jarvis et al. (1996) and one third constituted by 6 aldopentose conjugates, probably xylose conjugates, which was also partly confirmed by better retention of these compared to their glucose analogues. These aldopentose derivatives have to our knowledge has never been reported in the literature. All these monosaccharide derivatives could easily be identified as they only produced  $[M+NH_4]^+$  and  $[M+Na]^+$  pseudomolecular ions, whereas the normal trichothecenes produced these as minor ions and  $[M+H]^+$  as the major ion.

The monosaccharide conjugate fraction of 15-20% fits well with the finding of Jarvis et al. (1996), and toxicology

wise it is not known if these are toxic in vivo as the case for deoxynivalenol-3-glucoside (Berthiller et al. 2011).

**Acknowledgements.**- To Dra. Raquel Rubia Rech for technical assistance with photography.

## REFERENCES

- Alda J.L., Sallis E.S.V., Nogueira C.E.W., Soares M.P., Amaral L., Marcolongo-Pereira C., Frey Jr F. & Schild A.L. 2009. Intoxicação espontânea por *Baccharis coridifolia* (Compositae) em equinos no Rio Grande do Sul. *Pesq. Vet. Bras.* 29:409-414.
- Barros C.S.L. 1998. Livestock poisoning by *Baccharis coridifolia*, p.569-572. In: Garland T. & Barr A.C. (Eds), *Toxic Plants and Other Natural Toxicants*. CAB International, Wallingford.
- Berthiller F., Krska R., Domig K.J., Kneifel W., Juge N., Schuhmacher R. & Adam G. 2011. Hydrolytic fate of deoxynivalenol-3-glucoside during digestion. *Toxicol. Lett.* 206:264-267.
- Busam L. & Habermehl G.G. 1982. Accumulation of mycotoxins by *Baccharis coridifolia*: a reason for livestock poisoning. *Naturwissenschaften* 69:392-393.
- Driemeier D., Cruz C.E.F. & Loretto A.P. 2000. *Baccharis megapotamica* var. *weirii* poisoning in Brazilian cattle. *Vet. Human Toxicol.* 42:220-221.
- Duncan W.H., Piercy P.L., Feurt S.D. & Starling R. 1957. Toxicological aspects of southeastern plants. II. Compositae. *Econ. Bot.* 11:75-85.
- Everist S.L. 1981. *Poisonous Plants of Australia*. Angus and Robertson, Sydney, p.160-161.
- Fettman M.J. 2006. Fluid and electrolyte metabolism, p.329-352. In: Thrall A.M. (Ed.), *Veterinary Hematology and Clinical Chemistry*. Blackwell Publishing, Ames.
- Greene C.E. & Prescott J.F. 2006. Streptococcal and other gram-positive bacterial infections, p. 302-315. In: Greene C.E. (Ed.), *Infectious Diseases of the Dog and Cat*. 3<sup>rd</sup> ed. Saunders Elsevier, St Louis.
- Habermehl G.G., Busam L., Heydel P., Mebs D., Tokarnia C.H., Döbereiner J. & Spraul M. 1985. Macrocyclic trichothecenes: cause of livestock poisoning in the Brazilian plant *Baccharis coridifolia*. *Toxicol.* 23:731-745.
- Jarvis B.B. 1992. Macrocyclic trichothecenes from Brazilian *Baccharis* species: From microanalysis to large-scale isolation. *Phytochem. Anal.* 3:241-249
- Jarvis B.B., Mokhtari-Rejali N., Schenkel E.P., Barros C.S.L. & Matzenbacher N.I. 1991. Trichothecene mycotoxins from Brazilian species. *Phytochemistry* 30:789-797.
- Jarvis B.B., Midiwo J.O., Bean G.A., Aboulnasr M.B. & Barros C.S.L. 1988. The mystery of trichothecene antibiotics in *Baccharis* species. *J. Nat. Prod.* 51:736-744.
- Jarvis B.B., Wang S., Cox C., Rao M.M., Philip V., Varaschin M.D. & Barros CSL. 1996. Brazilian *Baccharis* toxins: Livestock poisoning and isolation of macrocyclic trichothecene glucosides. *Nat. Toxins* 4:58-71.
- Kupchan S.M., Streelman D.R., Jarvis B.B., Dailey R.G. & Sneden A.T. 1977. Isolation of potent new antileukemic trichothecenes from *Baccharis megapotamica*. *J. Org. Chem.* 42:4221-4225.
- Marsh C.D., Clawson A.B. & Eggleston W.W. 1920. *Baccharis pteronioides* as a poisonous plant of the Southwest. *J. Am. Vet. Med. Assoc.* 57:430-434.
- Morris D.D. 2002. Alterations in the clotting profile, p.434-439. In: Smith B.P. (Ed.), *Large Animal Internal Medicine*. 3<sup>rd</sup> ed. Mosby, St Louis.
- Mosier D.A. 2011. Vascular disorders and thrombosis, p.60-88. In: Zachary J.F. & McGavin M.D. (Eds), *Pathologic Basis of Veterinary Disease*. 5<sup>th</sup> ed. Elsevier, St Louis.
- Nielsen K.F., Månsson M., Rank C., Frisvad J.C. & Larsen T.O. 2011. Dereplication of microbial natural products by LC-DAD-TOFMS. *J. Nat. Prod.* DOI: 10.1021/np200254t.
- Olivera-Filho J.C., Carmo P.M.S., Lucena R.B., Pierezan F. & Barros C.S.L.



2011. *Baccharis megapotamica* var. *weirii* poisoning in water buffaloes (*Bubalus bubalis*). J. Vet. Diagn. Invest. 23:610-614.
- Pedroso P.M.O., Bandarra P.M., Feltrin C., Gomes D.C., Watanabe T.T.N., Ferreira H.H. & Driemeier D. 2010. Intoxicação por *Baccharis megapotamica* var. *weirii* em ovinos. Pesq. Vet. Bras. 30:403-405.
- Rissi D.R., Rech R.R., Figuera R.A., Cagnini D.Q., Kommers G.D. & Barros C.S.L. 2005. Intoxicação espontânea por *Baccharis coridifolia* em bovinos. Pesq. Vet. Bras. 25:111-114.
- Rizzo I., Varsavky E., Haidukowski M. & Frade H. 1997. Macrocyclic trichothecenes in *Baccharis coridifolia* plants and endophytes and *Baccharis artemisioides* plants. Toxicon 35:753-757.
- Rozza D.B., Raymundo D.L., Corrêa A.M.R., Seitz A.L., Driemeier D. & Colodel E.M. 2006. Intoxicação espontânea por *Baccharis coridifolia* (Compositae) em ovinos. Pesq. Vet. Bras. 26:21-25.
- Smith, B.P. & Magdesian K.G. 2002. Alterations in the alimentary and hepatic function, p.102-122. In: Smith B.P. (Ed.), Large Animal Internal Medicine. 3<sup>rd</sup> ed. Mosby, St Louis.
- Stegelmeier B.L., Sani Y. & Pfister J.A. 2009. *Baccharis pteronioides* toxicity in livestock and hamsters. J. Vet. Diagn. Invest. 21:208-213.
- Tokarnia C.H. & Döbereiner J. 1975. Intoxicação experimental em bovinos por "mio-mio" *Baccharis coridifolia*. Pesq. Agropec. Bras. 10:79-97.
- Tokarnia C.H., Peixoto P.V., Gava A. & Barros C.S.L. 1992. Intoxicação experimental por *Baccharis megapotamica* var. *megapotamica* e var. *weirii* (Compositae) em bovinos. Pesq. Vet. Bras. 12(1/2):19-31.
- Varaschin M.S. & Alessi A.C. 2003. Poisoning of mice by *Baccharis coridifolia*: an experimental model. Vet. Human Toxicol. 45:42-44.
- Varaschin M.S., Barros C.S.L. & Jarvis B.B. 1998. Intoxicação experimental por *Baccharis coridifolia* (Compositae) em bovinos. Pesq. Vet. Bras. 18:69-75.