

Ostwald ripening in a Pt/SiO₂ model catalyst studied by in situ TEM

Simonsen, Søren Bredmose; Chorkendorff, Ib; Dahl, Søren; Skoglundh, Magnus; Sehested, Jens; Helveg, Stig

Published in:
Journal of Catalysis

Link to article, DOI:
[10.1016/j.jcat.2011.04.011](https://doi.org/10.1016/j.jcat.2011.04.011)

Publication date:
2011

Document Version
Peer reviewed version

[Link back to DTU Orbit](#)

Citation (APA):
Simonsen, S. B., Chorkendorff, I., Dahl, S., Skoglundh, M., Sehested, J., & Helveg, S. (2011). Ostwald ripening in a Pt/SiO₂ model catalyst studied by in situ TEM. *Journal of Catalysis*, 281(1), 147-155. DOI: 10.1016/j.jcat.2011.04.011

DTU Library

Technical Information Center of Denmark

General rights

Copyright and moral rights for the publications made accessible in the public portal are retained by the authors and/or other copyright owners and it is a condition of accessing publications that users recognise and abide by the legal requirements associated with these rights.

- Users may download and print one copy of any publication from the public portal for the purpose of private study or research.
- You may not further distribute the material or use it for any profit-making activity or commercial gain
- You may freely distribute the URL identifying the publication in the public portal

If you believe that this document breaches copyright please contact us providing details, and we will remove access to the work immediately and investigate your claim.

Ostwald ripening in a Pt/SiO₂ model catalyst studied by in situ TEM

Søren Bredmose Simonsen^{1,2}, Ib Chorkendorff², Søren Dahl², Magnus Skoglundh³, Jens Sehested¹ and Stig Helveg¹

¹Haldor Topsøe A/S, Nymøllevej 55, DK-2800 Kgs. Lyngby, Denmark,

²CINF, Department of Physics, Technical University of Denmark, DK-2800 Kgs. Lyngby, Denmark

³Competence Centre for Catalysis (KCK), Chalmers University of Technology, SE-41296, Göteborg, Sweden

ABSTRACT: Sintering of Pt nanoparticles dispersed on a planar SiO₂ support was studied by *in situ* transmission electron microscopy (TEM). A time-lapsed TEM image series of the Pt nanoparticles, acquired during the exposure to 10 mbar synthetic air at 650 °C, reveal that the sintering is governed by the Ostwald ripening mechanism. The *in situ* TEM images also provide information about the temporal evolution of the Pt particle size distribution and of the individual nanoparticle's growth or decay. The observed Pt nanoparticle changes compare well with predictions made by mean-field kinetic models for ripening, but deviations are revealed for the time-evolution for the individual nanoparticles. A better description of the individual nanoparticle ripening is obtained by kinetic models that include local correlations between neighboring nanoparticles in the atom-exchange process.

KEYWORDS: Catalyst deactivation, sintering, Ostwald ripening, nanoparticles, Pt, *in situ* TEM.

1. Introduction

Metal nanoparticles dispersed on a porous support material are used as efficient heterogeneous catalysts for diverse applications in energy conversion, chemical supply and environmental protection [1,2]. However, the high-surface area of the nanoparticles is associated with an excess surface energy, so the nanoparticles represent a meta-stable solid state. Given sufficient thermal activation, the nanoparticles will therefore sinter into larger particles and consequently cause an unwanted reduction of the metal surface area which may affect the catalyst performance [3-5]. At the microscopic level, the sintering is attributed to the transport of atomic species (metal atoms or complexes consisting of metal atoms and gas derivatives) at the surface of the nanoparticle or the support material [4]. The specific transport pathways for the atomic species are often considered to reflect the following generic sintering mechanisms [4,6]: (i) particle migration, in which the nanoparticles diffuse over the support and eventually coalesce with other nanoparticles, and (ii) atom migration, in which atomic species are emitted from one nanoparticle, diffuse over the support and attach to another nanoparticle. The latter mechanism is often referred to as Ostwald ripening.

In Ostwald ripening, the transport of atomic species is explained by the Gibbs-Thomson relation [4,7], which describes the surface concentration of the diffusing species at support sites adjacent to the edge of a nanoparticle, ρ_r , by

$$(1) \quad \rho_r = \rho_\infty \exp\left(\frac{2\gamma\Omega}{kTr}\right)$$

where r is the radius of the nanoparticle, ρ_∞ the surface concentration of atomic species in equilibrium with an infinitely large particle, γ the surface energy, Ω the atomic volume, k Boltzmann's constant and T the temperature. According to eq. 1, the concentration of atomic species is higher near small particles than near larger particles. As a result of the gradient in concentration, a net flux will proceed where atomic species diffuse from smaller to larger particles, so the larger particles eventually grow at the expense of the smaller ones. The growth or decay of the nanoparticles is often described by kinetic models relying on the mean-field assumption of the concentration of atomic species. That is, the concentration of atomic species is constant on the support beyond the screening distance, L , from the edge of the particle and this mean-field concentration is governing the atom-exchange for each particle in the ripening process [4,7]. Combined with the assumption of a flat and homogeneous catalyst support, expressions for the rate of particle size change can be derived. For an interface-controlled ripening process, in which the diffusion over the support is fast and the flux away from the particle edge limits the sintering rate, the rate by which the radius changes, dr/dt , can be expressed by [4]:

$$(2) \quad \frac{dr}{dt} = \frac{\alpha}{r^2} \left(\frac{r}{r^*} - 1 \right)$$

For a diffusion-controlled ripening process, in which the diffusion on the support limits the sintering rate, the rate by which the radius changes can be expressed by [4]:

$$(3) \quad \frac{dr}{dt} = \frac{\alpha'}{r^3 \ln\left(\frac{L}{r}\right)} \left(\frac{r}{r^*} - 1 \right)$$

In eqs. 2 and 3, α and α' are system specific parameters, r the particle radius and r^* the critical radius. At a given time in the sintering process, the critical radius corresponds to the particle size, which is in equilibrium with the mean-field concentration, and therefore does not change. Moreover, eqs. 2 and 3 are based on a first order Taylor expansion of eq. 1. In this approximation r^* equals the mean arithmetic

radius of the particle ensemble [8]. For sufficiently small particles, the Taylor expansion is inapplicable and r^* deviates from the mean radius [9].

The applicability of the kinetics models (eqs. 2 and 3) for describing ripening in heterogeneous catalysts has been subject to much debate [10-18]. For instance, as discussed by Voorhees [17] and Dadyburjor et al. [18], the mean-field assumption for the concentration of ripening-mediating species should be useful for catalysts with low metal loadings, because the metal particles are, on the average, sufficiently far apart on the support as compared to the screening distance (L). But, even for such catalysts, the actual preparation route may result in regions of high local particle density with a mean particle separation that is comparable to the particle size. As the particle separation approaches the screening distance (L), the particles will alter the concentration of atomic species in the vicinity of neighboring particles as compared to the uniform mean-field concentration. Hence, in such a nanoparticle ensemble, a nanoparticle should experience an effective concentration of atomic species, depending on the location and size of the neighboring nanoparticles, and so the nanoparticle ripening should correlate with the local conformation of nanoparticles. Previously, it was demonstrated that such local correlations in ripening are present in homoepitaxial systems, including Si-islands on Si(111) [19,20] and Ag-islands on Ag(111) [21]. These studies used time-resolved microscopy to monitor the ripening of two-dimensional islands with radii larger than ca. 5 nm under ultra-high vacuum conditions and reveal a size-dependency of the island ripening that is not well-described by mean-field kinetic models, whereas kinetic models incorporating local correlations provide a better description of the island ripening. Recently, *in situ* microscopy of model catalyst systems, including three-dimensional Au nanoparticles on TiO₂ during the CO oxidation [22] and Pt nanoparticles on Al₂O₃ during oxidizing conditions [23], revealed that local correlations between the metal nanoparticles may also affect ripening processes in heterogeneous catalysts. However, a detailed description of the correlated ripening effect was not pursued for those model catalysts.

In the present study, we address the issue of local correlations in ripening for a Pt/SiO₂ catalyst. The Pt/SiO₂ catalyst system is representative for e.g. oxidation catalysts in diesel or lean-burn engine exhaust treatment. Our study focuses on a catalyst system consisting initially of highly monodisperse Pt nanoparticles (radius of ca 1.5 nm) with a high, uniform density (ca. 0.03 particles/nm²) on a planar, amorphous SiO₂ support. This is an ideal model system because Pt is expected to sinter via ripening under oxidizing conditions [24], and because the high density of the Pt nanoparticles, corresponding to a short particle interspacing of ca. 3 nm, should enhance the effect of local correlations in the nanoparticle ripening. Specifically, by means of *in situ* transmission electron microscopy (TEM), the model catalyst

was monitored during exposure of the sample for 10 mbar of 21 % O₂ in N₂ and at 650 °C. Time-resolved TEM images of the model catalyst confirm unambiguously that Pt sintering was mediated by Ostwald ripening. The first quantitative analysis of the growth and decay of the Pt nanoparticles is systematically compared to the predictions of the interface-controlled and diffusion-controlled ripening models including (i) a mean-field assumption and (ii) local correlations for the atom-exchange process, as described in the framework of [19,20,25]. The analysis shows that Pt nanoparticle ripening is well-described by both interface- and diffusion-controlled ripening models under the present experimental conditions and that a kinetic description, including information of the local particle conformation, gives a better description of the temporal evolution of the individual nanoparticle sizes.

2. Materials and Methods

The Pt/SiO₂ model catalyst was formed on a Si wafer with a 30 nm thick, amorphous and electron-transparent Si₃N₄ window (fig. 1). Following the Si₃N₄ window preparation [26], a flat and amorphous SiO₂ support layer was formed by oxidizing the Si₃N₄ surface using a microwave plasma processor (TePla 300PC) operated at 1 kW with 1 mbar O₂ for 40 min. The resulting SiO₂ layer had a thickness of ca. 7 nm, measured by ellipsometry, and a root-mean-square roughness below 0.6 nm over a 100 μm² area, determined by atomic force microscopy. X-ray photoelectron spectroscopy (XPS) reveals a characteristic peak at 103.5 eV, corresponding to the reference value for the Si 2p_{3/2} peak in SiO₂ [27]. Diffraction patterns of the Si₃N₄-supported SiO₂ layer, obtained using a Titan 80-300 transmission electron microscope (FEI Company), demonstrate only broad and diffuse bands of diffracted electrons consistent with an amorphous structure. Thus, the SiO₂ support matched closely a homogeneous medium. Platinum was deposited onto the SiO₂ support using an electron-beam evaporator (AVAC HVC600) with a base vacuum pressure of $4 \cdot 10^{-6}$ mbar. The evaporator was operated with a Pt target of 99.99 % nominal purity (Nordic High Vacuum AB) and with a deposition rate of 0.05 nm/s, to form a Pt film with a nominal thickness of 0.5 nm. The as-deposited Pt was present as irregularly shaped particles with a mean radius of ca. 1.5 nm. The irregular, projected shapes transformed into a circular, projected shape of the Pt particles during the establishment of the ageing conditions, in accordance with [23]. Moreover, XPS reveals a surface carbon contamination on the as-prepared samples of ca. 8 at.-%. The carbon will most likely react off or desorb prior to the *in situ* TEM observations [23].

In situ TEM was performed using a CM300 FEG-ST (Philips/FEI Company) transmission electron microscope equipped with a differentially pumped environmental cell [28]. This microscope permits the acquisition of TEM images or time-lapsed image series of samples during the exposure to reactive gases (up to ca. 15 mbar) and elevated temperatures (up to ca. 900 C). Specifically, the microscope was

operated with a primary electron energy of 300 keV and an ultimate information limit of ca. 0.14 nm depending on the *in situ* conditions. For the present experiments, the specimen was imaged during the exposure to 10 mbar technical air composed of 21 % O₂ and 79 % N₂ (class 2 from Air Liquide). For heating, the specimen was mounted with the Pt/oxide side facing the bottom of the Inconel furnace of a Gatan single-tilt heating holder (model 628). The specimen was heated in the gas environment at a rate of 30°C/min from room temperature up to 650 °C. The temperature was measured by a PtRh thermocouple spot welded on the furnace. After the establishment of the isothermal conditions at 650 °C (corresponding to time $t = 0$ min.), the temperature was kept constant within ca. 3 °C. The TEM imaging was performed after drift stabilization of the sample holder.

The *in situ* TEM imaging was performed using a 1k x 1k Tietz Fastscan F-114 CCD camera, with an objective aperture (scattering semi-angle of 7.5 mrad) inserted and at a fixed magnification corresponding to an image pixel size of 0.13 nm. Moreover, the effective information limit was 0.21 nm as confirmed by a Young fringe test performed with a separate sample in 10 mbar air at 500 °C. The *in situ* imaging of the supported Pt nanoparticles was carried out in two different modes: (i) A dynamic mode was applied in which a time-lapsed image series was acquired at the same area of the specimen. The image series consist of images, which were acquired at times relative to $t = 0$ min. at intervals of 30 min. and averaged over six consecutive, aligned TEM frames of 0.5 sec. exposure. The image averaging was adopted to improve the signal-to-noise ratio in the images and to reduce the effect of residual thermal drift [23]. (ii) A static mode in which additional TEM images were acquired within 5 min. of the time corresponding to each of the images of the time-lapsed image series. The static TEM images were acquired by shifting the beam to a distant area which was prior unexposed to the electron beam. The static images were also averaged of six consecutive, aligned TEM frames of 0.5 sec. exposure. Subsequently, the beam was blanked until acquisition of the following image in the image series.

To ensure a negligible effect of the electron-beam on the present observations, the electron-illumination conditions were examined prior to the actual experiment, following the procedure in [23]. The present Pt/SiO₂ system was imaged during the exposure to 10 mbar technical air at 200 – 600 °C under varying electron-beam current densities. The TEM images show that a minor fraction of ca. 1 % of the particles coalesced with close neighbor particles and that the main effect of the electron-beam was an induced Pt particle decay. The particle decay rate depended linearly on the beam-current density and was higher than for the Pt/Al₂O₃ system in [23]. Consequently, in the present experiments, imaging was performed using a lower electron beam current density of 0.03 A/cm², corresponding to a particle radius decay rate of 0.01 nm/min. For the total exposure time of ca 9 min. for the specific area in the time-lapsed image

series, the beam-induced mean Pt particle radius decay is thus estimated to ca. 0.09 nm, which is negligible, compared to the Pt particle sizes and the estimated measuring error.

From the TEM images, Pt particle sizes (radii) were measured using a circular approximation to their projected area. The projected areas were measured manually or automatically, as described in [23]. Images from the static imaging mode were analyzed automatically for generating particle size distributions (PSD's) with a large dataset. For these measurements, the estimated error is 0.5 nm. Images from the dynamic imaging mode were analyzed manually for examining individual nanoparticles more precisely. For the manual measurements, the estimated error equals the effective information limit of 0.21 nm.

3. Results

3.1 Sintering mechanism

To directly visualize structural transformations of the supported Pt nanoparticles, the time-lapsed TEM images were acquired of a specific specimen area *in situ* during exposure to the oxidizing gas environment (Fig. 2, Supplementary Materials). Figure 2 reveals that the Pt particles remained immobile and that the projected areas of the Pt particles either increased or decreased. Overall, the mean Pt particle size increased as the shrinking particles eventually disappeared. Hence, the observations unequivocally demonstrate that the Pt nanoparticles sintered and that the sintering was governed by the Ostwald ripening process. The finding is in accord with the previous work by Chen and Schmidt, who used *ex situ* TEM to monitor a specific area on a similar model catalyst after several ageing treatments at temperatures from 600 °C to 685 °C in 1 atm. air [24]. Also, ripening-mediated sintering of Pt nanoparticles was reported in experiments with Pt/Al₂O₃ model catalysts [23,29]. In comparison, the relative importance of the atom and particle migration mechanisms for industrial Pt/SiO₂ catalysts has been debated [30-33]. The debate reflects in part that these studies are based on indirect and/or post-mortem examinations which may hamper an unambiguous determination of the prevailing sintering mechanism [10]. Previously, it was proposed that oxygen accelerates sintering of Pt nanoparticles through the formation of volatile Pt-oxide species [4,24,34-36]. It is possible that such species also mediated sintering in the present *in situ* TEM experiments.

3.2 Particle size distributions

To complement the dynamic observations with more extended statistical information about the ensemble of Pt nanoparticles, TEM images in the static mode were acquired at independent and distant areas of the specimen during exposure to the oxidizing gas environment and analyzed automatically.

The additional images allow the Pt particle size distribution (PSD) to be extracted as a function of time. Figure 3 shows that the PSDs have a main peak which gradually shifts towards larger particle size over time, consistent with the dynamic observations (Fig. 2). The initial mean particle radius was 1.5 nm with a standard deviation of 0.3 nm and the mean radius was 2.1 nm with a standard deviation of 0.4 nm at the end of the experiment ($t = 330$ min.).

The observed time-evolution of the PSD can be compared with that predicted by the mean-field interface- and diffusion-controlled ripening models, as in other ripening studies [4,10,11,14,16,17,36]. By using eqs. 2 and 3 the time-evolution of the PSD was calculated numerically following the procedure described by De Smet et al. [36]. Specifically, the PSD in fig. 3a was used as the initial PSD and a discrete time step of 0.5 min was chosen. The simulations were performed iteratively by systematically varying the constants α and $\alpha'/\ln(L/r)$ in eqs. 2 and 3 respectively, until the mean particle radii of the calculated and measured PSD matched at the end of the experiment ($t = 330$ min). The iterative procedure resulted in $\alpha = 0.035 \text{ nm}^{-1} \cdot \text{min}^{-1}$ and $\alpha'/\ln(L/r) = 0.067 \text{ nm}^{-1} \cdot \text{min}^{-1}$ for the interface- and diffusion-controlled ripening models respectively. In the present PSD simulations, the term $\ln(L/r)$ is considered constant for the following reasons: (a) the relation between r and L is not a priori known (b) using a constant L for all particles sizes, depend on the assumption that $L > r$ at all times, for all particles, or else $dr/dt \rightarrow \pm\infty$ for $r \rightarrow L$ (eq. 3). This leads to an inconsistency with the mean-field assumption, since the size of the largest particles ($r \approx 2.5$ nm at $t = 0$) exceeds the mean distance between the edges of the neighboring particles (ca. 1.5 nm at $t = 0$).

Figure 3 includes the simulated PSDs for interface-controlled (solid line) and the diffusion-controlled (dotted line) ripening. The PSDs, based on the diffusion-controlled ripening model, seem slightly narrower than the PSDs, based on the interface-controlled model, as suggested in [4,20], but the difference is not significant. Thus, the comparison in fig. 3 shows that the mean-field models describe the observed PSDs well. At first glance, an agreement is expected because the mean-field models are based on the assumption of a homogeneous support which is approached by the planar and amorphous SiO_2 support in the present model catalyst. Moreover, the comparison shows that both the diffusion and the interface-controlled process may contribute to the ripening in the present experiments. However, the interface-controlled ripening would have been expected to dominate due to the relatively high metal loading and thus small diffusion distances between the nanoparticles in the present model catalysts [37]. The lack of a pronounced difference between the models may be due to the short ageing times resulting only in a slight change of mean radius from 1.5 nm to 2.1 nm in the present experiments (fig. 3).

3.2. Nanoparticle growth and decay rates

Although, the previous analysis shows that the mean-field models describe the observed PSDs well, it is noteworthy that the analysis is based on an ensemble of nanoparticles, which may tend to average out any effect of interactions between the nanoparticles. To address the possibility of such local dependencies, the dynamic changes of the individual nanoparticles may on the contrary be examined. Specifically, the growth or decay rate of individual nanoparticles was obtained from the time-lapsed image series (Fig. 2, Supplementary Information) by manually measuring the change in radius over the time interval, $t = 60 - 120$ min, for each individual particle in the image. For normalization, the mean radius, r_{mean} , was calculated from the particle radii measured at $t = 60$ min. Fig. 4a shows the measured dr/dt as a function of the normalized radius, r/r_{mean} . For the majority of the nanoparticles, the growth or decay rates belong to the first or third quadrant respectively, corresponding to a positive dr/dt for $r/r_{mean} > 1$ or a negative dr/dt for $r/r_{mean} < 1$. Thus, particles larger or smaller than the average particle size grew or shrank respectively, as predicted by the mean-field ripening models. However, a minor fraction of the nanoparticles is associated with a rate of radius change in the second and fourth quadrant. As these rates are not accounted for by the estimated measurement error (indicated by the error bars), it seems that the mean-field models are not sufficient to fully account for the observed ripening.

To further elaborate on deviations from the mean-field models, the rates in fig. 4a are replotted in fig. 4b as a function of $1/r^2 \cdot (r/r_{mean} - 1)$. For interface-controlled ripening, eq. 2 predicts a linear relationship for fig. 4b with a slope corresponding to α , and an offset $dr/dt = 0$ at $r = r_{mean}$. Fig. 4b includes the best linear fit to the rates, which was obtained for $\alpha = 0.025 \text{ nm}^{-1} \cdot \text{min}^{-1}$, in agreement with the α -value for the PSD simulations, and with an offset of 0.0005 nm/min . very close to the origin. Apparently, Fig. 4b shows an overall linear trend of the data, but the data spread further emphasizes deviations from the mean-field model. A similar analysis based on the diffusion-controlled ripening model, eq. 3, is included in fig. 4c. That is, fig. 4c shows the rates in fig. 4a replotted as a function of $1/r^3 \cdot (r/r_{mean} - 1)$. Assuming the term $\ln(L/r)$ in eq. 3 is constant, the best linear fit to the data in fig. 4c has a slope $\alpha'/\ln(L/r) = 0.027 \text{ nm}^{-1} \cdot \text{min}^{-1}$, which is in reasonable agreement to $\alpha'/\ln(L/r) = 0.067 \text{ nm}^{-1} \cdot \text{min}^{-1}$ from the PSD simulations, and an offset of 0.0002 nm/min . which is close to the origin. The mean-field model for diffusion-controlled ripening also captures an overall linear trend of the observations, but a significant data spread beyond the mean-field model expectation is apparent.

3.3 Temporal evolution of the nanoparticle sizes

To further examine the apparent discrepancies between the observed dynamic changes of the individual Pt nanoparticles and the mean-field models, a selection of Pt nanoparticles was examined through the

entire time-lapsed image series. Figure 5a shows the selected particles in the TEM frame from fig. 2a. For each particle, the projected radius, r , of these particles as well as the mean radius for the entire TEM image, r_{mean} , was measured manually as a function of time. Figure 5b shows that for the dynamic mode the mean particle radius increased as a function of time and that nanoparticles with $r > r_{mean}$ grew and nanoparticles with $r < r_{mean}$ decayed. These general trends are overall consistent with the mean-field models. However, discrepancies are also apparent from a comparison of the observed particle radii of particles 1-9 with the calculated radii. Specifically, the time-dependency of the particle radii was calculated using the interface-controlled mean-field model (eq. 2) with the observed radii of particles 1-9 at $t = 0$ (fig. 5b) as initial radii and $\alpha = 0.03 \text{ nm}^{-1} \cdot \text{min}^{-1}$. Figure 5c shows the calculated time-dependency of the particle radii and demonstrates that the growth or decay rates are directly related to the particle size. However, the pattern differs from the observations: Despite comparable initial radii, the particles 4-6 decayed significantly slower than particles 7-9. Moreover, the observed order by which particles 4-9 decay also differs from the calculated order.

3.4 Ripening models including local correlations

As discussed above, a possible cause for the discrepancy between the observations and the mean-field model predictions could be that the particle ripening is not governed by a mean-field concentration of diffusing species, but by the local concentration of diffusing species provided by the neighboring nanoparticles due to the close proximity of the Pt nanoparticles in the present model system [17,18]. To address the influence of the local nanoparticle configuration on the particle ripening, the observations in fig. 5 will in the following be compared to predictions of ripening models incorporating local correlations in the atom-exchange process [19,20,25]. Specifically, Bartelt et al. established a local correlation framework for interface-controlled ripening [19,20] and Zheng and Bigot developed a framework for diffusion-controlled ripening [25]. Both frameworks are considered because interface- or diffusion-controlled ripening described the previous observations well.

For both models, the size-evolution of a particle, i , is calculated on the basis of the contribution to the concentration of atomic species from i 's nearest neighbor particles. Here we adopt the approach used by Bartelt et al. and define the nearest neighbors by the Voronoi construction [19,20]. In the Voronoi construction, the support plane is decomposed into cells in such a way that the Voronoi cell of particle i is obtained as the inner envelope of all line segments of points being equidistantly located between the centers of i and any other particle [38]. Figure 6 illustrates the Voronoi construction for an area of the present sample. The nearest neighbors of a particle i are those particles j with a Voronoi cell which have

a segment in common with the cell of i . Moreover, the Voronoi construction has a time-dependency, because cells vanish as the immobile, decaying particles eventually disappear (fig. 6).

The interface-controlled ripening model derived by Bartelt et al. concerns two-dimensional islands [19,20]. Here we consider a similar model for ripening of three-dimensional particles on a two-dimensional support based on the expression for the net flux of atomic species, J onto the particle, i [4]:

$$(4) \quad J_i = 2\pi r_i a \beta (\rho_{local} - \rho_{r_i})$$

Here, a is the inter-atomic spacing of Pt on the substrate at the particle edge, r_i the radius of particle i , ρ the surface concentration of diffusing species according to eq. 1. $\beta = \nu \cdot \exp(-E_s/kT)$, where ν is the vibrational frequency of the substrate sites, and E_s the energy barrier for moving a Pt atom from a support site to a particle edge site, k the Boltzmann's constant and T the temperature. ρ_{local} is the local surface concentration of atomic species, which only depends on i 's nearest neighbor particles. Notice, that in this notation the energy barrier for moving a Pt atom from the edge site to the support site is not stated explicitly as in [4], but implicitly in eq. 1. The contributions to ρ_{local} from each nearest neighbor, j , is approximated by the mean of ρ_r for i and j , weighted by the opening angle, Φ_{ij} , of the Voronoi cell of particle i , as defined in fig. 6:

$$(5) \quad \rho_{local} = \sum_j \frac{1}{2} (\rho_{r_i} + \rho_{r_j}) \frac{\Phi_{ij}}{2\pi}$$

Thus, the model effectively operates with a “local” mean concentration of atomic species, determined by the nearest neighbor particles, contrary to “global” mean-field concentration, underlying eqs. 2 and 3, which is spatially invariant and determined through the average particle size. The particle volume change rate can now be calculated from eqs. 4-5:

$$(6) \quad \frac{dV_i}{dt} = \Omega J_i$$

Here, Ω is the atomic volume of bulk Pt ($\Omega = 1.5 \cdot 10^{-2} \text{ nm}^3$). By using eq. 6, $r(t)$ can be calculated numerically for the particles 1-9 in fig. 5, as described in detail in the following.

The diffusion-controlled ripening model developed by Zheng and Bigot is based on the following expression for the diffusion-limited flux from a particle i to a neighbor particle j [25]:

$$(7) \quad J_{ij} = \frac{2\pi D}{\ln(l_{ij}^2 / r_i r_j)} (\rho_{r_i} - \rho_{r_j})$$

Where D is the surface diffusion constant for diffusion of Pt on SiO₂ and l_{ij} the distance between the island centers. Thus, this model operates with a pair-wise atom-exchange from a particle, i , to its neighbors, j , instead of describing the particle ripening as a result of the interaction with a local mean concentration of atomic species established by the neighbors. Here we adopt the model by Zheng and Bigot and include the detailed neighborhood of nanoparticles by weighting the flux contribution by means of the Voronoi geometry. Thus, the change in volume of a given particle, i can be described as:

$$(8) \quad \frac{dV_i}{dt} = -\Omega J_i = \sum_j J_{ij} \frac{\Phi_{ij}}{2\pi}$$

Here, Ω is the atomic volume of Pt and Φ_{ij} is the opening angle of the Voronoi cell of particle i . As for eq. 6, eq. 8 allows $r(t)$ to be calculated numerically for the nine particles of fig. 5 under the assumption of hemispherical shaped particles.

The two ripening models presented here include correlations between neighboring particles with a weighting scheme based on the Voronoi construction. The Voronoi construction treats the particles as point sources or sinks for atomic species, so only the distances between the particle centers play a role. However, for the present model catalyst, the distances between the particles were comparable to their sizes. As the exchange of Pt is considered to occur at the particle edges, the correlated ripening of particle i may therefore be expected to depend on both the separation and the size of the neighboring particles, j . Specifically, for a pair of neighboring particles of radii, r_i and r_j , and a center separation, l_{ij} , the inter-particle distance may be better represented by the distance between the edges, $l_{ij} - r_i - r_j$, than l_{ij} . Moreover, for the exchange of atomic species, the particle i effectively interacts with sites at the j 's edge; the number of which scales with the j 's circumference $2\pi r_j$. Based on these considerations, an alternative weighting scheme is proposed in which the contributions to the correlated ripening of i is weighted by the ratio of the circumference of the neighbor particle j to the distance between the edges of the particles i and j . In the following, this scheme is referred to as the “size-dependent” weighting method and it is included in eqs. 6 and 8 by the transformation:

$$(9) \quad \frac{\Phi_{ij}}{2\pi} \rightarrow \frac{2\pi r_j / l_{ij} - r_i - r_j}{\sum_{j'} 2\pi r_{j'} / l_{ij'} - r_i - r_{j'}}$$

Where both j and j' denote the nearest neighbors to a particle, i as defined by the Voronoi construction and the sum in the denominator normalizes the weights.

Based on eqs. 6, 8 and 9, the time-evolution of the radii of particles 1-9 (fig. 5) can be calculated with four schemes based on the interface- or diffusion-controlled ripening models including local correlations based on the Voronoi or size-dependent weighting methods. Specifically, for each scheme, the $r(t)$ is calculated using the rate for volume change, dV_i/dt , an assumption of hemispherically shaped particles, and with initial radii corresponding to the measured radii at $t = 0$ (fig. 5b). The calculations progressed with time-steps of 30 min. corresponding to the time-steps in the time-lapsed image series. The calculations rely on a determination of the surface energy γ and the parameters $\beta \cdot \rho_\infty$ (interface-controlled schemes) or $D \cdot \rho_\infty$ (diffusion-controlled schemes). Clearly, the models are more sensitive to changes of γ , due to the exponential dependency (eq. 1), than to the proportional dependency of $\beta \cdot \rho_\infty$ or $D \cdot \rho_\infty$. Therefore, to estimate these parameters for the four schemes, an iterative process was applied in which $r(t)$ is calculated for varying values of $\beta \cdot \rho_\infty$ or $D \cdot \rho_\infty$ for a fixed value of γ . The calculations were repeated with other values of γ , close to the surface energy of Pt ($\gamma = 2.1 \text{ J/m}^2$ [39]), until the best fit to the data in fig. 5b was obtained. The calculations show that the models are indeed very sensitive to γ and that the models only come close to the observations in fig. 5b for $\gamma = 0.5\text{-}0.6 \text{ J/m}^2$. The lower surface energy of the Pt nanoparticles compared to metallic Pt is expected as the Pt nanoparticles should be covered with oxygen [40-42]. DFT calculations suggest that the surface O-terminated Pt sites is ca. $0.4\text{-}1.2 \text{ J/m}^2$ [43]. Moreover, the best fit to the radii of particles 1-9 is obtained with the following parameters: For interface-controlled ripening model (a) $\gamma = 0.5 \text{ J/m}^2$, $\beta \cdot \rho_\infty = 2.7 \text{ s}^{-1} \cdot \text{nm}^{-2}$ with Voronoi weighting and (b) $\gamma = 0.6 \text{ J/m}^2$, $\beta \cdot \rho_\infty = 4.1 \text{ s}^{-1} \cdot \text{nm}^{-2}$ with size dependent weighting. For diffusion-controlled ripening model (c) $\gamma = 0.5 \text{ J/m}^2$, $D \cdot \rho_\infty = 1.4 \text{ s}^{-1}$ with Voronoi weighting and (d) $\gamma = 0.55 \text{ J/m}^2$, $D \cdot \rho_\infty = 1.6 \text{ s}^{-1}$ size-dependent weighting. Figure 7a-d presents the calculated time-evolution of the particle radii for particles 1-9 of fig. 5. The model parameters were found to give a good description of the growth and decay trends of 9 additional particles at a different area of the model catalyst, which confirms the robustness of the fitting procedure.

Figure 7 shows that all four schemes for correlated ripening capture the growth of the particles 1-3 as depicted in fig. 5b. However, the schemes differ in the description of the decay and disappearance of particles 4-9. For the interface-controlled model weighted by the Voronoi opening angle, fig. 7a shows that only particles 5 and 7 disappear whereas particles 4, 6, 8 and 9 remain without significant change during the observation period. The interface-controlled model weighted by the size-dependent weighting method instead predicts that all particles decay and vanish (fig. 7b), as observed (fig. 5b). In fact, the calculated decay for the particles 4, 6, 7 and 8 match the observations quantitatively well. However, some deviation is also apparent: Particle 9 decayed faster in the experiment than according to the calculations and the decay of particle 5 is better described by the Voronoi weighting scheme. For the diffusion-controlled model, as calculated using the Voronoi opening angle or the size dependent weighting method, the trends for the decaying particles in figs. 7c and 7d are similar to the calculated decay using the interface-controlled model in fig. 7a and 7b respectively.

For the present experimental conditions, the description of the time-evolution of the individual particles by the interface- and the diffusion-controlled ripening models, including either weighting scheme, are similar and can thus not be distinguished. However, the local correlations are shown to strongly affect the particle decay and the decay is strongly dependent on the weighting method. Specifically, the models, including the proposed size-dependent weighting method, match better most of the observed particle decays in fig. 5b than the mean-field models, although deviations are apparent for the particles 5 and 9: A close inspection of the TEM images reveals that particle 5 was more distantly situated from smaller neighbor particles, which may explain why the Voronoi scheme gives a better description, and that particle 9 had one close and larger neighbor particle, which may explain why the size dependent weighting method described the decay of this particle better. These considerations may suggest that the optimal weighting method for the describing local correlation effects depends on the detailed size and location of neighboring particles. Modeling the particle growth or decay may therefore intimately depend on the local conformation of the particle ensemble and the lack of a generally applicable weighting scheme thus seems to complicate the detailed description of local correlation effects in ripening.

Discussion

The present *in situ* TEM observations of a Pt/SiO₂ model catalyst provide unique mechanistic and kinetic information on Pt nanoparticle ripening. This information enables a detailed comparison of the temporal evolution of the nanoparticle sizes with predictions made from different ripening models.

Although the time-dependency of the nanoparticle sizes (fig. 3-5) overall is well-described by kinetic models based on the mean-field assumption, deviations are revealed at the individual nanoparticle level. The deviations were proposed to reflect that the atom-exchange in the growth or decay of the individual nanoparticles was influenced by the size and location of the neighboring nanoparticles due to the high particle density in the present model catalyst. Including such local correlations between the neighboring particles in the kinetic models gives a more satisfactory description of the individual nanoparticle sizes (figs. 5,7). The effect of such local correlations is expected to also affect ripening in industrial catalysts with high particle density. Highly dense particle ensembles may result from the synthesis of catalysts with a high or inhomogeneous metal loading.

Although the kinetic behavior of the individual nanoparticles exposed a deviation from the mean-field ripening model, an ensemble property such as the particle size distribution is well described in that framework (fig. 3). Due to the initial uniform particle density and highly monodispersed size of the Pt nanoparticles, it is possible that the ensemble properties average over a sufficiently large ensemble of different local configurations of nanoparticles to blur the distinct effect of the local correlations. Thus, for catalysts containing a more inhomogeneous nanoparticle ensemble, local correlations in ripening may be speculated to have a more distinct effect on the time-dependency of ensemble properties. The detailed relationship between the individual nanoparticle behavior and the ensemble properties could in principle be examined for the present model catalyst by integrating the results of an extended analysis similar to that presented in fig. 5. Here, we limit the discussion to a basic description of local correlation effects in interface and diffusion controlled ripening.

The present work focuses on the mean-field assumption underlying the ripening models eqs. 2-3 and has not addressed other assumptions of the models that could also be of importance for the observations. Common for the ripening models is the assumption of a homogeneous metal-support adhesion energy and a hemispherical nanoparticle shape. Although the flat and amorphous SiO₂ approaches a homogeneous support, surface inhomogeneities or defects cannot be excluded and may result in an inhomogeneous metal adhesion with an impact on the concentration or diffusion of atomic species as well as on the shape and orientation of the metal nanoparticles [44-48]. These detailed structural features may also be important for determining the rates of nanoparticle growth or decay in the presence of a reactive gas environment [4,6,35]. The TEM images generally show a similar contrast level of particles with similar size as well as a uniform contrast over the support. A detailed interpretation of the image contrast is, however, complicated by the projection geometry and the convolution of mass-

thickness and diffraction contrast phenomena. The present TEM images are therefore likely insensitive to surface inhomogeneities at the atomic-level.

Furthermore, the ripening models were applied irrespective of the nanoparticle sizes in the present analysis. As Pt nanoparticles with a radius below 0.5 nm contain less than 30 atoms, the geometrical surface curvature is not a well-defined parameter. In this size-regime, the Gibbs-Thomson relation (eq. 1), being a continuum model, breaks down per definition. Thus, although the size-dependency reflected by eq. 1 is generally accepted to be valid for larger particles, it is likely insufficient for the smallest particle sizes [9,13,22,49]. The size-dependent ripening of the smallest particles has been subject to debate: Datye et al. emphasized that, even within the Gibbs-Thomson model, eqs. 2 and 3 are imprecise for small particles because the equations rely on a first order Taylor expansion of eq. 1 [9]. The models, expressed by eqs. 4 and 7, apply eq. 1 directly and should thus better describe the smaller particles. For a particle sufficiently smaller than r^* , Yang et al. suggested that dr/dt is determined by the particle's own chemical potential and is thus less dependent on the neighbor particle configuration resulting in an accelerated decay trend of the smallest particles described by the exponential Gibbs-Thomson relation (eq. 1) [22]. A faster decay of small particles will also happen if the surface energy increases with decreasing particle size as suggested by Campbell et al. [13]. For the present study, a part of the smallest particles revealed in fact an almost linear decay of the particle radius with time, e.g. particle 7 and 9 in fig. 5b, contrary to the accelerated decay rate predicted by ripening models due to the exponential term in eq. 1 (fig. 5c and fig. 8a-d). For 50 additional particles with a radius below ca. 1 nm, a similar linear decay was observed for about half of these particles in the present experiment. It remains to be addressed if this observed linear particle decay can be accounted for by a size-dependent surface energy of the nanoparticles. Modeling the surface energy is further complicated by the size-dependent surface oxidation of the Pt nanoparticles [40-42].

Conclusions

By means of *in situ* TEM, the sintering of Pt nanoparticles dispersed on a planar SiO₂ support was monitored during the exposure to 10 mbar synthetic air at 650 °C. A time-lapsed image series shows that the nanoparticle sintering is dominated by Ostwald ripening and provides detailed information about the nanoparticle growth or decay. Specifically, the time-dependent particle size distributions, the nanoparticle growth rates and the time-evolution in nanoparticle sizes are found to be overall well-described by kinetic models based on a mean-field assumption for the atomic species mediating diffusion-controlled or interface-controlled ripening. However, for the individual nanoparticles deviations are observed from the mean-field model predictions. Due to the high particle density, it is

suggested that the nanoparticle ripening is influenced by the size and location of the neighbor particles. Ripening models including such local correlations in the so-called Voronoi and size-dependent weighting schemes are established and shown to describe well the observed time-evolution of individual nanoparticle sizes.

Acknowledgements

We gratefully acknowledge Bengt Kasemo, Jonas Andersson, Elin Larsson and Laurent Feuz (Chemical Physics Group) as well as Eva Olsson (Microscopy and Microanalysis Group) at Chalmers University of Technology for contributing to sample preparations. We thank the MC2-Access project for financial support. We acknowledge Lone Beck and John Larson (CINF) at Technical University of Denmark for help with the XPS analysis. We acknowledge the participation of the CTCI Foundation, Taiwan, in the establishment of the *in situ* TEM facility at Haldor Topsøe A/S. CINF is funded by The Danish National Research Foundation.

References

- [1] A.T. Bell, *Science*, 299 (2003) 1688.
- [2] Y. Li, G. Somorjai, *Nanolett.* 10 (2010) 2289.
- [3] J.A. Moulijn, A.E.v. Diepen, F. Kapteijn, in: G. Ertl, H. Knözinger, F. Schüth, J. Weitkamp (Eds.), *Handbook of Heterogeneous Catalysis*, 2nd Ed., Vol. 4, Wiley-VCH Verlag GmbH & Co KGaA, Weinheim, 2008, Chap. 7.
- [4] P. Wynblatt, N.A. Gjostein, *Prog. Solid. State. Ch.* 9 (1976) 21.
- [5] C.H. Bartholomew, *Appl. Catal. A* 212 (2001) 17.
- [6] S.E. Wanke, P.C. Flynn, *Catal. Rev. Sci. Eng.* 12 (1975) 93.
- [7] B.K. Chakraverty, *J. Phys. Chem. Solids.* 28 (1967) 2401.
- [8] R. Finsy, *Langmuir* 20 (2004) 2975.
- [9] L.R. Houk, S.R. Challa, B. Grayson, P. Fanson, A.K. Datye, *Langmuir* 25 (2009) 11225.
- [10] A.K. Datye, Q. Xu, K.C. Kharas, J.M. McCarty, *Catal. Today* 111 (2006) 59.
- [11] C.G. Grandqvist, R.A. Burhman *J. Catal.* 42 (1976) 477.
- [12] C.T. Campbell, S.C. Parker, D.E. Starr, *Science* 298 (2002) 811.

- [13] S.E. Wanke, *J. Catal* 40 (1977) 234.
- [14] E. Ruckenstein, D.B. Dadyburjor, *J. Catal* 48 (1977) 73.
- [15] S.D. Coughlan, M.A. Fortes, *Scr. Metall. Mater.* 28 (1993) 1471.
- [16] G.A. Fuentes, E. Salinas-Rodríguez, in: J.J. Spivey, G.W. Roberts, B.H. Davis, (Eds.), *Studies in Surface Science and Catalysis*, Vol. 139, Elsevier, Amsterdam, p. 503.
- [17] P. W. Voorhees, *J. Stat. Phys.* 38 (1985) 231.
- [18] D.B. Dadyburjor, S.P. Marsh, M.E. Glicksman, *J. Catal.* 99 (1986) 358.
- [19] W. Theis, N.C. Bartelt, R.M. Tromp, *Phys. Rev. Lett.* 75 (1995) 3328.
- [20] N.C. Bartelt, W. Theis, R.M. Tromp, *Phys. Rev. B* 54 (1996) 11741.
- [21] K. Morgenstern, G. Rosenfeld, G. Comsa, *Surf. Sci.* 441 (1999) 289.
- [22] F. Yang, M.S. Chen, D.W. Goodman, *J. Phys. Chem. C* 113 (2009) 254.
- [23] S.B. Simonsen, I. Chorkendorff, S. Dahl, M. Skoglundh, J. Sehested, S. Helveg, *J. Am. Chem. Soc.* 132 (2010) 7968.
- [24] M. Chen, L.D. Schmidt, *J. Catal.* 55 (1978) 348.
- [25] X. Zheng, B. Bigot, *J. Phys. II France* 4 (1994) 743.
- [26] A.W. Grant, Q.-H. Hu, B. Kasemo, *Nanotechnology* 15 (2004) 1175.
- [27] C.D. Wagner, W.N. Riggs, L.E. Davis, J.F. Moulder, in: G.E. Muilenberg (Ed.), *Handbook of X-ray Photoelectron Spectroscopy*, Perkin-Elmer Corporation, Minnesota, 1979. p. 52.
- [28] P.L. Hansen, A.K. Datye, S. Helveg, *Adv. Catal.* 50 (2006) 77.
- [29] R. T. K. Baker, C. Thomas, R. B. Thomas, *J. Catal.* 38 (1975) 510.
- [30] T.A. Dorling, R.L. Moss, *J. Catal.* 5 (1966) 111.
- [31] T.A. Dorling, B.W.J. Lynch, R.L. Moss, *J. Catal.* 20 (1971) 190.
- [32] T.J. Lee, Y.G. Kim, *J. Catal.* 90 (1984) 279.
- [33] W. Zou, R.D. Gonzalez, *Appl. Catal. A*, 102 (1993) 181.
- [34] P. Lööf, B. Stenbom, H. Nordén, B. Kasemo, *J. Catal.* 144 (1993) 60.

- [35] C.H. Bartholemew, in: J.J. Spivey, S.K. Argarwal, (Eds.), *Catalysis – A Specialist Periodical Report*, Vol. 10, Athenaeum Press Ltd, Newcastle upon Tyne, 1993, Chap. 2.
- [36] Y.D. Smet, L. Deriemaeker, R. Finsy, *Langmuir* 13 (1997) 6884.
- [37] P.C. Flynn, S.E. Wanke, *J. Catal.* 34 (1974) 400.
- [38] G. Voronoi, *J. Reine, Angew. Math.* 134 (1908) 556.
- [39] M. McLean, E.D. Hondros, *J. Mater. Sci.* 6 (1971) 19.
- [40] P. Löf, B. Kasemo, L. Björnkvist, S. Andersson, A. Frestad, in: A. Crucq (Ed.), *Studies in Surface Science and Catalysis*, Vol. 71, Elsevier, Amsterdam, 1991, p. 253.
- [41] C.-B. Wang, H.-K. Lin, S.-N. Hsu, T.-H. Huang, H.-Chi. Chiu, *J. Mol. Catal. A* 188 (2002) 201.
- [42] R.W. McCabe, C. Wong, H.S. Woo, *J. Catal.* 114 (1988) 354.
- [43] N. Seriani, W. Pompe, L.C. Ciacchi, *J. Phys. Chem. B* 110 (2006) 14860.
- [44] R. Hardeveld, F. Hartog, *Surf. Sci.* 15 (1969) 189.
- [45] L. Wand, A. Roudgar, M. Eikerling, *J. Phys. Chem. C* 113 (2009) 17989
- [46] Z. Sljivancanin, B. Hammer, *Surf. Sci.* 515 (2002) 235.
- [47] J.H. Kwak, J. Hu, D. Mei, C.-W. Yi, D.H. Kim, C.H.F Peden, L.F. Allard, J. Szanyi, *Science* 325 (2009) 1670.
- [48] P.L. Hansen, J.B. Wagner, S. Helveg, J. Rostrup-Nielsen, B.S. Clausen, H. Topsøe, *Science* 295 (2002) 2053.
- [49] S. C. Parker, C. T. Campbell, *Phys. Rev. B* 75 (2007) 035430.

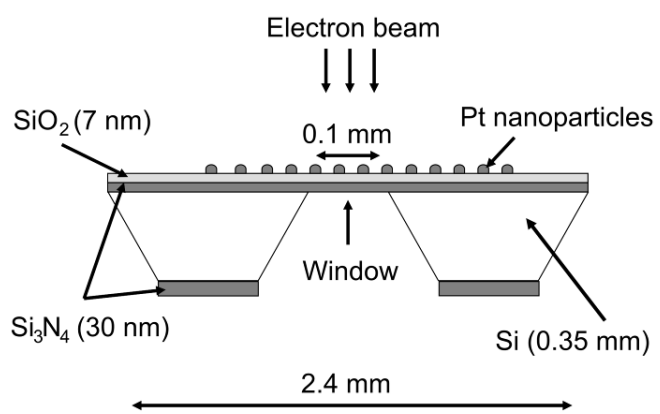


Fig. 1: Schematic side-view of the Pt/SiO₂ model catalyst.

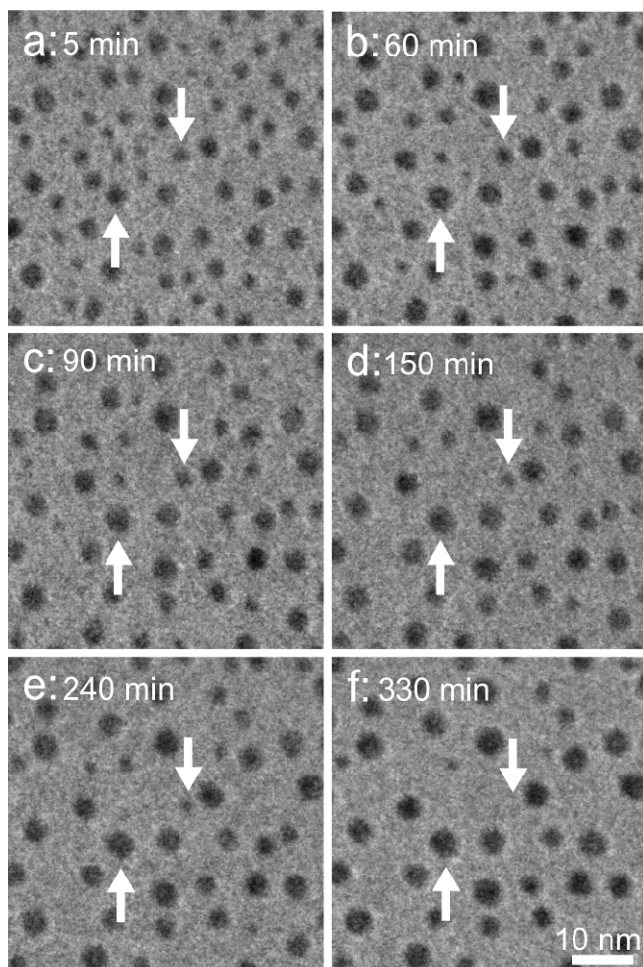


Fig. 2: (a-f) Time-lapsed TEM images recorded in situ at the same area of the Pt/SiO₂ model catalyst during exposure to 10 mbar air at 650 °C. The images are 50 x 50 nm² sections of the full TEM images of size 130 x 130 nm² (See Supplementary materials). The denoted times are relative to the time at which the temperature reached 650 °C. To guide the eye, arrows indicate examples of a growing and of a decaying particle.

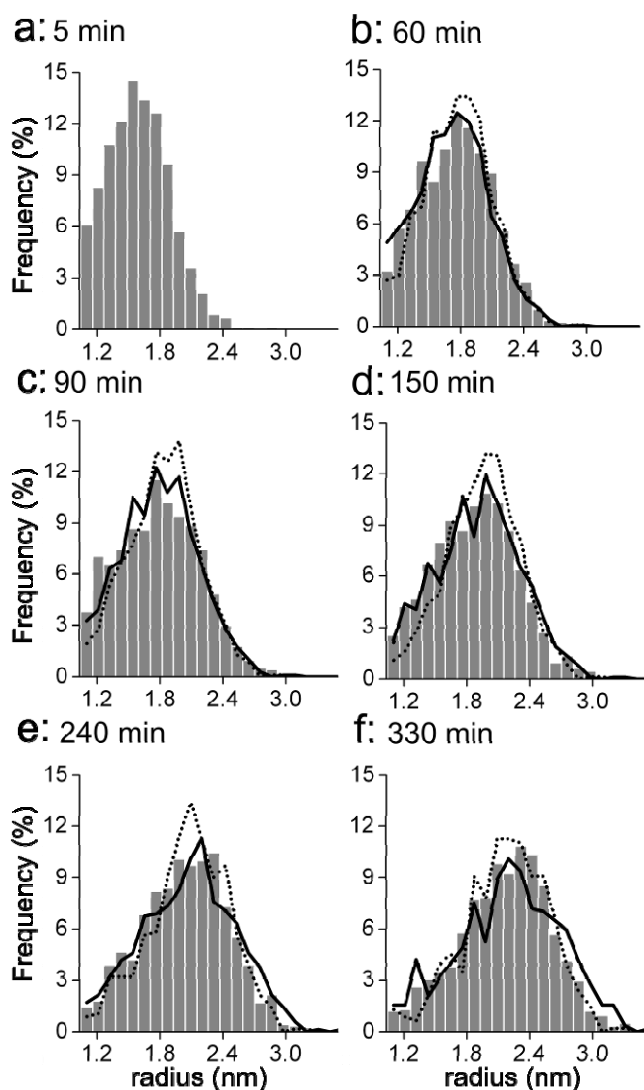


Fig. 3: (a-f) Time-lapsed particle size distributions obtained from the static TEM images. The static TEM images were recorded *in situ* of different areas of the Pt/SiO₂ model catalyst during the exposure to 10 mbar air at 650 °C. Prior to the static TEM image acquisition, the areas were unexposed to the electron beam. The number of measured particles included in each distribution is (a) 1593, (b) 2059, (c) 1101, (d) 1225, (e) 1095 and (f) 1134. The lines indicate histograms simulated based on the interface-controlled (solid) and diffusion-controlled (dotted) ripening models in eqs. 2 and 3 with (a) as the initial distribution. The number of particles drops throughout the simulation to (b) 1224, (c) 1079, (d) 891, (e) 699, and (f) 573 for the interface-controlled model and (b) 1065, (c) 926, (d) 725, (e) 566, and (f) 463 for the diffusion-controlled model.

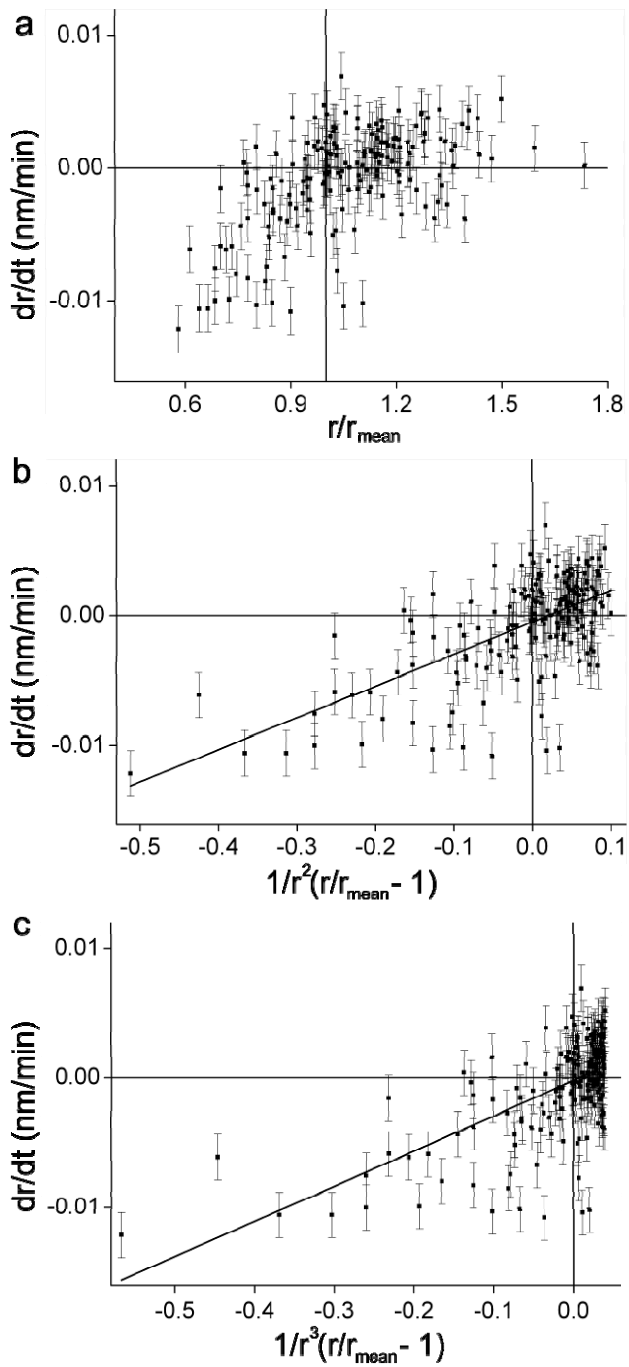


Fig. 4: The growth and decay rate, dr/dt , for individual Pt nanoparticles presented as a function of (a) normalized radius, r/r_{mean} , (b) $1/r^2(r/r_{\text{mean}} - 1)$, corresponding to eq. 2, and (c) $1/r^3(r/r_{\text{mean}} - 1)$, corresponding to eq. 3. The rates are obtained from the measurement of the radius at $t = 60$ and 120 min for 185 particles. The error bars indicate the estimated measurement error. For the best fitted line included in (b) and (c), the R^2 -value is 0.42 and 0.39 respectively.

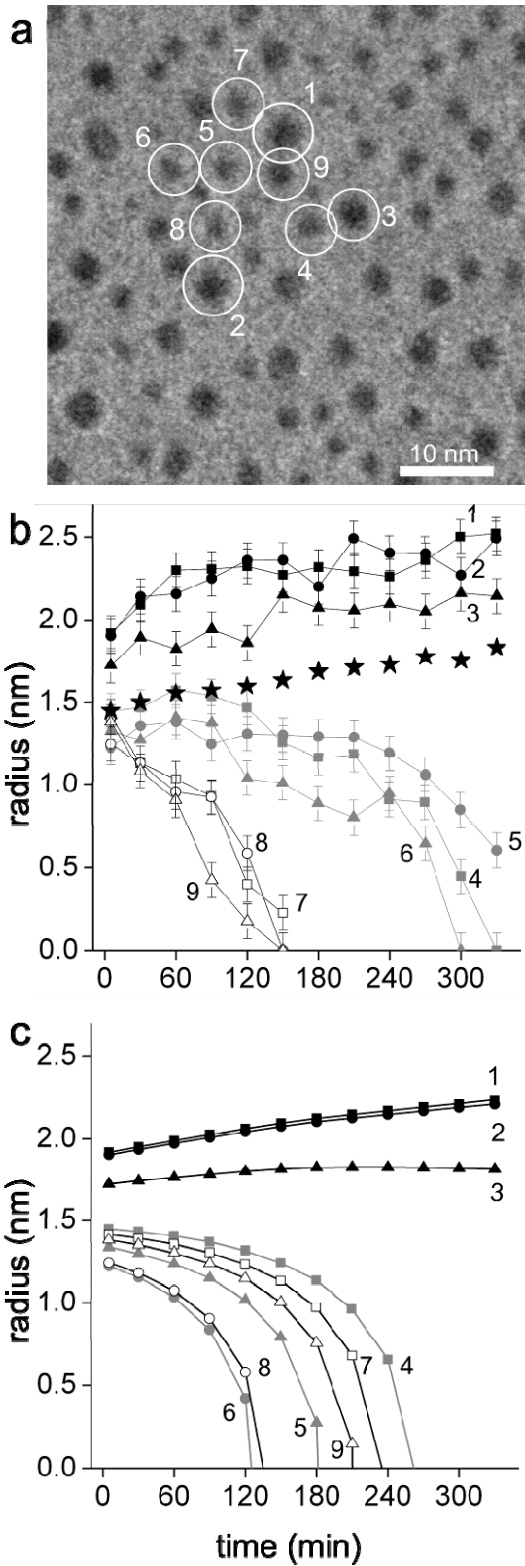


Fig. 5: (a) An outline of the nine selected particles in fig. 2a (white circles). (b) The measured particle radii for the particles 1-9 (a) as a function of time. The error bars indicate the estimated measurement errors. The mean radius for the whole TEM image (stars) is also presented. (c) Calculated time-dependent particle radii for the particles 1-9. The calculations used the interface-controlled ripening model based on the mean-field assumption (eq. 2).

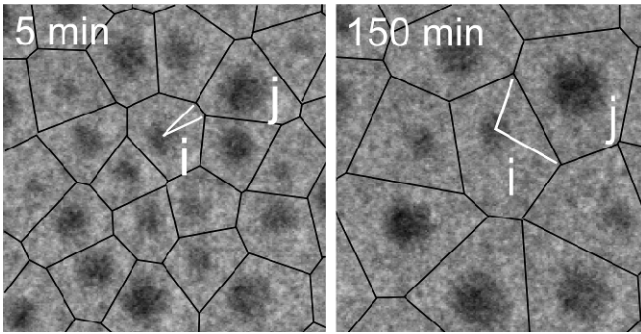


Fig. 6: The Voronoi construction (black lines) superimposed on a close-up on fig. 2. For the Voronoi cell of particle i , the opening angle Φ_{ij} (indicated by white lines) with respect to the neighbor particle j is defined by the common line of the two adjacent cells with respect to the center of mass of particle i . i corresponds to particle no. 5 in fig. 5.

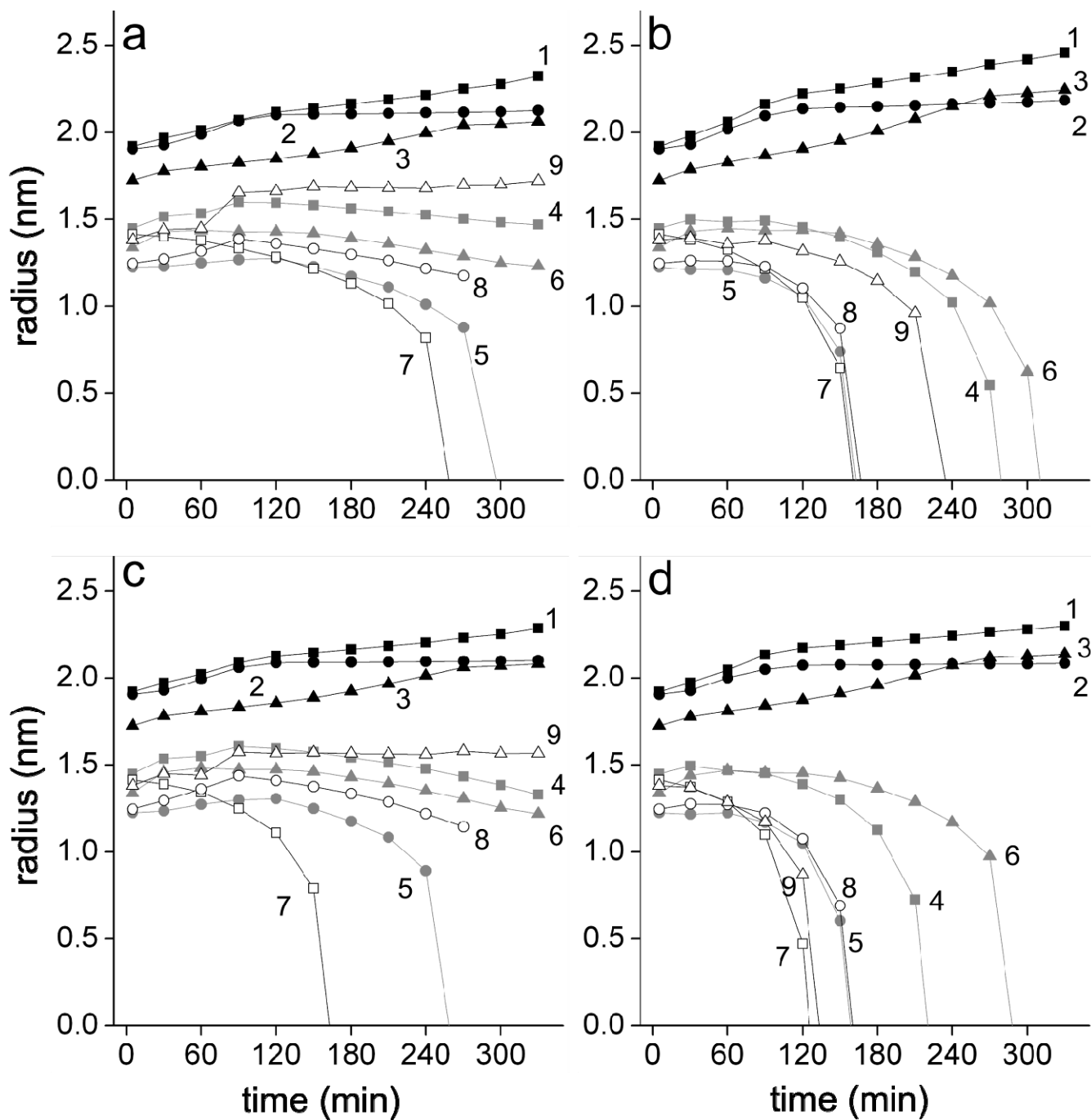


Fig. 7a-d Calculated particle radii as a function of time. The calculations are based on (a-b) the interface-controlled and (c-d) the diffusion-controlled ripening model including local correlations in the atom-exchange process. The local correlations are included by (a,c) the Voronoi and (b,d) the size-dependent weighting methods.