

Technical University of Denmark



## Extensive cross-disciplinary analysis of biological and chemical control of *Calanus finmarchicus* reproduction during an aldehyde forming diatom bloom in mesocosms

Jonasdottir, Sigrun; Dutz, Jörg; Koski, Marja; Yebra, L.; Jakobsen, H.H.; Vidoudez, C.; Pohnert, G.; Nejtgaard, J.C.

*Published in:*  
Marine Biology

*Link to article, DOI:*  
[10.1007/s00227-011-1705-8](https://doi.org/10.1007/s00227-011-1705-8)

*Publication date:*  
2011

[Link back to DTU Orbit](#)

*Citation (APA):*  
Jonasdottir, S., Dutz, J., Koski, M., Yebra, L., Jakobsen, H. H., Vidoudez, C., ... Nejtgaard, J. C. (2011). Extensive cross-disciplinary analysis of biological and chemical control of *Calanus finmarchicus* reproduction during an aldehyde forming diatom bloom in mesocosms. *Marine Biology*, 158(9), 1943-1963. DOI: 10.1007/s00227-011-1705-8

## DTU Library

Technical Information Center of Denmark

---

### General rights

Copyright and moral rights for the publications made accessible in the public portal are retained by the authors and/or other copyright owners and it is a condition of accessing publications that users recognise and abide by the legal requirements associated with these rights.

- Users may download and print one copy of any publication from the public portal for the purpose of private study or research.
- You may not further distribute the material or use it for any profit-making activity or commercial gain
- You may freely distribute the URL identifying the publication in the public portal

If you believe that this document breaches copyright please contact us providing details, and we will remove access to the work immediately and investigate your claim.



DTU Aqua  
National Institute of Aquatic Resources

[www.eur-oceans.eu](http://www.eur-oceans.eu)

[www.aqua.dtu.dk](http://www.aqua.dtu.dk)

---

## Extensive cross disciplinary analysis of biological and chemical control of *Calanus finmarchicus* reproduction during an aldehyde forming diatom bloom in mesocosms

Sigrún H. Jónasdóttir<sup>1\*</sup>, Jörg Dutz<sup>1</sup>, Marja Koski<sup>1</sup>, Lidia Yebra<sup>2</sup>, Hans Henrik Jakobsen<sup>3</sup>, Charles Vidoudez<sup>4</sup>, Georg Pohnert<sup>4</sup>, Jens C. Nejstgaard<sup>5,6</sup>

<sup>1</sup>Technical University of Denmark, National Institute for Aquatic Resources, Kavalergaarden 6, DK-2920 Charlottenlund, Denmark;

<sup>2</sup>Instituto Español de Oceanografía, Centro Oceanográfico de Málaga, Apdo. 285, 29640 Fuengirola, Málaga, Spain;

<sup>3</sup>National Environmental Research Institute, Aarhus University, Box. 358, Frederiksborgvej 399, DK-4000, Roskilde, Denmark;

<sup>4</sup>Friedrich Schiller University, Bioorganic Analytics, Lessingstr. 8, D-07743 Jena, Germany;

<sup>5</sup>Uni Research, Thormøhlensgate 49, 5006 Bergen, Norway; current address: Skidaway Institute of Oceanography, Savannah, GA, USA;

### ABSTRACT

Egg and faecal pellet production and egg hatching success of the calanoid copepod *Calanus finmarchicus* was monitored over a period of 14 days (14–28 April, 2008) while fed water from 4 differently treated mesocosms and ambient water. Two of the mesocosms used were inoculated with the polyunsaturated aldehyde (PUA) producing diatom *Skeletonema marinoi* while 2 received only nutrient additions with or without silica. The mesocosms developed blooms of *S. marinoi*, mixed diatoms or the haptophyte *Phaeocystis pouchetii*, respectively. Faecal pellet production of *C. finmarchicus* increased with increasing food availability. Egg production increased with time in all mesocosms to a maximum single female production of 232 eggs female<sup>-1</sup>day<sup>-1</sup> (average of 90 eggs female<sup>-1</sup>day<sup>-1</sup>) and followed the development of ciliates and *P. pouchetii*, but was not affected by the observed high (up to 15 nmol L<sup>-1</sup>) PUA production potential of the phytoplankton. The hatching success of the eggs produced on the mesocosm diets was high (78-96%) and was not affected by either aldehydes in the maternal diet or exposure to the dissolved aldehydes in the water.

**Keywords:** Mesocosm, *Calanus finmarchicus*, egg production, plankton interactions, *Skeletonema marinoi*

\*Corresponding author: [sjo@aqu.dtu.dk](mailto:sjo@aqu.dtu.dk)

---

Article first published online: Sept 2011

Please note that this is an author-produced PostPrint of the final peer-review corrected article accepted for publication. The definitive publisher-authenticated version can be accessed here:

<http://dx.doi.org/10.1007/s00227-011-1705-8>

40 **Introduction:**

41 The effect diatoms have on copepod reproduction, hatching, growth and survival has been a topic of  
42 many papers for more than a decade. The studies have generally agreed that pure diatom diets are  
43 not always the best food for copepods (Kleppel et al. 1991; Poulet et al. 1994; Ianora et al. 1995;  
44 Jónasdóttir and Kiørboe 1996; Ianora et al. 2004). Pure diatom diets are found to have no, some,  
45 and up to detrimental effects on egg production rates and especially egg hatching (Ban et al. 1997)  
46 and survival of nauplii (Poulet et al. 1994; Koski et al. 2008). The effect can be diatom species  
47 specific (Ban et al. 1997) but also strain dependent differences induce different responses in  
48 feeding-, egg production, and hatching rates (Ask et al. 2006; Dutz et al. 2008). Different copepod  
49 species also react differently in their reproductive output to specific diatom diets (Ianora et al. 2003;  
50 Md Amin et al. 2011). Differences in feeding rates can though also be related to the size of the  
51 diatom (Rey et al. 2001). The negative effect of diatoms on copepod reproduction and survival has  
52 been explained by the differential ability of diatom species/strains to generate polyunsaturated  
53 aldehydes (PUA) while mechanically handled by copepods (Miralto et al. 1999; Pohnert et al. 2002;  
54 Wichard et al. 2007). Also differential nutritional quality of diatoms (Jónasdóttir and Kiørboe  
55 1996), poor nutrient uptake in the copepod gut due to rapid gut passage time when feeding diatom  
56 diets (Dutz et al. 2008) have been brought forward as possible causes for the observed detrimental  
57 effects.

58

59 Protein, fatty acid, sterol and other biochemical components have been shown to change  
60 significantly with the growth stage of diatoms and have, for example, been related to nutrient  
61 limitation and light levels (Harrison et al. 1977; Claustre et al. 1989; Jónasdóttir 1994; Brown et al.  
62 1996; Klein Breteler et al. 2005). The production of polyunsaturated aldehydes from some diatoms  
63 is also shown to increase with senescing of a culture or a bloom (Ribalet et al. 2007; Vidoudez and  
64 Pohnert 2008). *Skeletonema marinoi* (Sarno and Singone) (previously referred to as *S. costatum*,  
65 Sarno et al. 2005) is one of the diatom species that produces heptadienal, octadienal and octatrienal  
66 PUAs upon cell wounding and senescence in high concentrations (Vidoudez and Pohnert 2008).  
67 This diatom is a common spring blooming species in the northern waters and occurs naturally in  
68 high abundances (over 500  $\mu\text{g C L}^{-1}$ ) in the Raunefjord and other Norwegian fjords and often  
69 dominates the diatom and total algae biomass during the spring bloom (Erga and Heimdal 1984,  
70 Erga 1989).

71

72 The copepod *Calanus finmarchicus* (Gunnerus) is one of the most important copepod species in the  
73 boreal north-east Atlantic waters where it constitutes up to 70% of the mesozooplankton biomass  
74 during summer (Fransz et al., 1991). *C. finmarchicus* ascends as copepodite stage 5 and adult from

75 diapause from great depths in the Southern Norwegian Sea (Heath 1999) and starts reproduction  
76 before the initiation of the spring bloom (Richardson et al. 1999; Niehoff et al. 1999; Jónasdóttir et  
77 al. 2008). However, the major egg production usually occurs during the diatom bloom (Niehoff et  
78 al. 1999; Debes et al. 2008). Diatoms are important food items for *C. finmarchicus* nauplii (Irigoien  
79 et al. 2003; Castellani et al. 2008) while the adult females seem to have broader selection of food  
80 types. Studies often demonstrate *C. finmarchicus* females having a positive selection for diatoms  
81 (Meyer-Harms et al. 1999; Koski and Riser 2006; Koski 2007), but they also select alternative food  
82 such as ciliates and larger prey when available (Mayor et al. 2006; Koski 2007). Still, when diatoms  
83 are not eaten in proportion to their availability they often can make up a significant part of the diet  
84 for *C. finmarchicus* females and late copepodites (Nejstgaard et al. 1997; 2001a, b). Therefore the  
85 diatom spring bloom is of importance for initial start of the *C. finmarchicus* population growth  
86 (Debes et al. 2008; Jónasdóttir et al. 2008).

87  
88 In the present study we used large mesocosms to investigate the biological and chemical effect of  
89 PUA producing diatom blooms on *C. finmarchicus* growth and reproduction. Large mesocosms are  
90 an ideal experimental system to investigate the simultaneous chemical and biological effects on  
91 plankton communities, including copepods. Such systems allow large volume sampling that is  
92 essential for chemical analyses and multiple bottle incubations without greatly affecting the  
93 plankton community in the mesocosms. With different manipulation of series of mesocosm bags  
94 diverse natural plankton communities can develop in parallel throughout their respective bloom  
95 cycles. A number of previous mesocosm studies using similar set-ups at the site of the present study  
96 the Raunefjord, the Norwegian National Mesocosm Centre, Espegrend, University of Bergen, have  
97 been used to successfully provoke blooms of naturally occurring plankton in near natural conditions  
98 (see discussions in Williams and Egge 1998; Nejstgaard et al. 1997, 2006).

99  
100 The goal of this study was to test if the PUA producing diatom *S. marinoi* affected the reproductive  
101 success, and growth of *C. finmarchicus* over a period of a bloom. *S. marinoi/costatatum* has been a  
102 focus of several studies showing that when used as a long term single diet negative effects were  
103 observed for *Calanus helgolandicus* on egg production and hatching (Ban et al. 1997; Ianora et al.  
104 2003). However, no negative effects were observed on *C. helgolandicus* egg production and  
105 hatching when *S. marinoi* was mixed in the diet in a field (Irigoien et al. 2000). *C. finmarchicus*  
106 reproduction was not affected by pure *S. marinoi* diets (Ban et al. 1997). These differential effects  
107 could have been *Skeletonema* strain dependent. Therefore, the idea with the present study was to  
108 use a *S. marinoi* strain that is known to produce high amounts of polyunsaturated aldehydes. The  
109 intent was to closely follow the chemical changes associated with the respective developing blooms

110 and to compare it simultaneously with the copepod growth, egg production, hatching success and  
111 naupliar survival, in as close as possible natural setting, mesocosms. This would allow us to directly  
112 assess the results for effects of specific food composition such as diatom rich diets. The fatty acid  
113 content of females and eggs was followed over the mesocosm blooms and those reported in another  
114 manuscript along with naupliar survival (Koski et al. unpublished). Due to the vast amount of  
115 different chemical and biological measurements conducted on the mesocosm water, this is one of  
116 the most extensive studies to date on the biological and chemical control on egg production rates of  
117 this species.

118

## 119 **Material and Methods**

### 120 *Mesocosms*

121 The experiments were conducted over a 14 day period between the 14<sup>th</sup> and 28<sup>th</sup> of May 2008 at the  
122 Espegrend marine biological field station by Raunefjord, Norway (latitude 60.16 °N; longitude:  
123 5.14 °E). On April 14<sup>th</sup> 6 transparent polyethylene enclosures (each 11 m<sup>3</sup>, 2 m diameter, non  
124 covered) were filled with unfiltered sea water from 4 m depth just outside the mesocosms, and the  
125 following day April 15<sup>th</sup> (day 1) the mesocosms received different treatments. In the present study  
126 we sampled 4 of those mesocosms, labelled B, C, E and F. All mesocosms were fertilized with 0.4  
127 µmol L<sup>-1</sup> phosphate and 4.24 µmol L<sup>-1</sup> nitrate. Mesocosm B had no more treatment, mesocosm C, E  
128 and F had additional 3.61 µmol L<sup>-1</sup> silicate fertilization and mesocosms E and F were inoculated  
129 with cultured *Skeletonema marinoi* (Strain G4, University of Bergen) corresponding to an increase  
130 of the low *in situ* concentrations with ca. 400 and 1000 cells mL<sup>-1</sup> respectively (Table 1). Water  
131 temperature was measured daily throughout the water column in the mesocosms with a SAIV  
132 SD204 CTD.

133

134 Water was sampled from each of the mesocosms every morning. The water was immediately  
135 brought to the laboratory in 5 and 20 L carboys where filtrations and incubations took place.

136

### 137 *Chlorophyll filtration, extraction and analysis*

138 Chlorophyll *a* (Chl *a*) concentrations were determined daily in the mesocosm bags by filtering  
139 duplicate water samples onto 0.2-µm Gelman 47 mm diameter polycarbonate filters, and a single  
140 serial fractionation series onto 10, 5, 1 and 0.2 µm Gelman 47 mm diameter polycarbonate filters.  
141 The filters were extracted immediately in 90% acetone overnight at 4°C and analyzed using a  
142 Turner Designs 10-AU fluorometer (Turner Designs, Sunnyvale, CA, USA).

143

### 144 *Protist plankton*

145 Protists were counted *in vivo* by a Cytobuoy™ scanning flowcytometer (CytoBuoy b.v. Woerden,  
146 The Netherlands) and by a FlowCAM II™ (Fluid Imaging Technologies, Yarmouth, ME USA)  
147 fitted with black and white camera. *S. marinoi* were counted in triplicates by the Cytobuoy  
148 flowcytometer following the procedures outlined by Takabayashi et al. (2006). The flowcytometer  
149 was unable to identify the colonial form of *Phaeocystis pouchetii* so cell concentrations were  
150 counted on colony images of the FlowCAM. The FlowCAM was set in auto-image mode using a  
151 4X objective and a total sample volume of ca 4.2 mL (run time 20 min) were analysed daily from  
152 each mesocosm. Each sample was fed the FlowCAM through a vertical tube from a beaker mounted  
153 above the vertical mounted flow-cell, in a fashion that prevented particle sedimentation in the flow  
154 system. The sample was stirred by a small lab stirrer set at the lowest speed (ca 5 rpm). The  
155 dimension of the flow cell, determined by the objective was 2 mm × 0.1 mm (10X) (Vitrocom,  
156 Mountain Lakes, NJ, USA). *Phaeocystis* colonies were counted and the numbers of cells were  
157 estimated by use of a calibrated regression between manually counted number of colonial cells per  
158 colony and colony grey scale area of FlowCAM images. Major protozoan groups >15µm were  
159 enumerated by the FlowCAM. Images were manually sorted into species classes such as ciliates and  
160 major heterotrophic dinoflagellates. The biomass of the individual groups such as dinoflagellates,  
161 ciliates, and total were converted to carbon biomass using the generic carbon-to-volume  
162 relationship given by Menden-Deuer and Lessard (2000).

163

#### 164 *Filtration for lipids and PUA and chemical analyses*

165 For PUA sampling and analysis, see Vidoudez et al. (2011b). For the determination of the fatty acid  
166 and sterol profile of the plankton, 0.5-5 L were filtered on GF/C filters under moderate vacuum.  
167 The filters were transferred into 4 mL brown glass vials and covered with 1 mL of methanol and 2  
168 µL of internal standard (myristic acid-d27; Sigma-Aldrich, Deisenhofen, Germany), 10 mg mL<sup>-1</sup> in  
169 methanol) and the samples were kept at -20°C until the end of the experiment. The samples were  
170 transported frozen and stored there at -80°C until analysis. The fatty acid and sterol profiles were  
171 determined simultaneously by gas chromatography-mass spectrometer (GC-MS) after  
172 transesterification (modified from Lepage and Roy, 1984) and silylation: samples were cooled to 77  
173 K in a liquid nitrogen bath prior freeze-drying. Five hundred µL of methanol:acetyl chloride 9:1 (>  
174 99.0%, Sigma-Aldrich), 300 µL of hexane, and two glass beads were added to the freeze-dried  
175 samples before tightly closing the vials. Samples were sonicated in an ultrasound bath for 10 min  
176 before vortexing for 1 min and subsequently incubated at 100°C for 10 min. Samples were cooled  
177 on an ice bath and 1 mL of deionised water was added and the samples were vortexed for another  
178 minute. Phase separation was achieved by centrifugation. The hexane phase was then transferred  
179 into 1.5 mL glass vials (Macherey-Nagel, Düren, Germany). Five hundred µL of chloroform were

180 then added to the remaining aqueous sample and the vials were vortexed for 5 min. After  
181 centrifugation, the chloroform phase was combined with the hexane phase. One mL of chloroform  
182 was then added to the samples and the vortex-centrifugation cycle was repeated as described above.  
183 The combined organic phases were dried over anhydrous sodium sulphate and the supernatant was  
184 removed from the drying agent by pipetting. The solvent was evaporated under vacuum and the  
185 samples were re-suspended in 100  $\mu\text{L}$  of hexane-chloroform (1:1). After transfer into 200  $\mu\text{L}$  glass  
186 inserts (Macherey-Nagel, Düren, Germany), 50  $\mu\text{L}$  of N-nethyl-N-(trimethylsilyl)trifluoroacetamide  
187 (Macherey-Nagel, Düren, Germany) was added, the vials were closed with caps fitted with PTFE-  
188 butyl-PTFE septa and incubated at 60°C for 20 min to allow derivatisation of the sterols. The  
189 samples were then stored at -80°C until analyses by GC-MS. A GCT premier time-of-flight mass  
190 spectrometer (Waters, Manchester, UK) coupled with an Agilent 6890N gas chromatograph  
191 equipped with a DB-5ms 30 m column (0.25 mm internal diameter, 0.25  $\mu\text{m}$  film thickness, with 10  
192 m Duraguard pre-column, Agilent, Waldbronn, Germany) was used with the following parameters:  
193 GC program: 60°C for 5 min, then ramping to 300°C at 10°C  $\text{min}^{-1}$ . This last temperature was held  
194 for 10 min. The injector, transfer line and ion source temperature was set to 300°C. Electron Impact  
195 ionisation (EI 70 eV) was used. The samples were injected in Split 1-15 depending on the  
196 concentration. Fatty acid and sterols were identified by comparison of the retention times and mass  
197 spectra with authentic standards. The PUA analysed include 2,4-heptadienal, 2,4-octadienal, 2,4,7-  
198 octatrienal, 2,4-decadienal and 2,4,7-decatrienal (these metabolites will be referred to in the  
199 following by their names not including the numbering of the double bonds). Quantification of fatty  
200 acids, sterols and PUA was validated using established analytical criteria (data not shown).

201

## 202 *Egg production*

### 203 Sampling of copepods

204 *Calanus finmarchicus* for incubations were sampled from a station in the Raunefjord 0.5 nautical  
205 miles North West of the field station, by using a WP-2 net with a 200  $\mu\text{m}$  mesh size and a non-  
206 filtering cod end, hauled obliquely from ca 20-m to the surface at ca 0.5  $\text{m s}^{-1}$ . Several tows were  
207 taken to obtain sufficient number of individuals. On deck, the content of the cod end was  
208 immediately diluted with ambient water and the sample was brought back in thermo boxes to the  
209 laboratory within 2 hours from the first net tow, and was kept cool with cooling elements. All  
210 handling of copepods, incubations and counting of eggs and faecal pellets was carried out in a dim  
211 lighted 7°C temperature controlled walk-in room. At day 7 the temperature in the mesocosms had  
212 increased to 8°C and the temperature the walk-in room was changed accordingly to 7.5°C.  
213 Photoperiod in the walk-in room was kept at 16:8 h, dim light: dark, and all incubations described  
214 below were covered.

215

## 216 Egg production experiments

217 Incubations started on day 2 after the inoculation of the mesocosms, with first results on day 3. For  
218 the egg production experiments, 20 replicates of 600 ml beakers were set up for each mesocosm  
219 treatment and an additional natural seawater control with water from outside the mesocosms. Each  
220 beaker contained a Plexiglas insert with a 300  $\mu\text{m}$  false bottom mesh which kept the female away  
221 from her eggs and faecal pellets that in turn passed the mesh and remained on the bottom of the  
222 beaker. One *C. finmarchicus* female was placed in each of the beaker inserts. Initially, the filtered  
223 seawater control was set up with 8 replicate females (as above). These controls were run for only 5  
224 days. On day 6, new controls were set up with 10 new females and ambient water and run for the  
225 remaining experimental period. These new females came from the net tow sampled at day 1 and  
226 had received ambient food (replaced daily), but their egg production had not been monitored prior  
227 to day 5. Each day females were transferred to a new food suspension from the newly sampled  
228 mesocosms and ambient sea water. Eggs and faecal pellets were concentrated on a 50 $\mu\text{m}$  sieve and  
229 gently flushed into a small Petri dish and immediately counted. Every other day the Petri dish  
230 containing eggs were set aside for 3 days allowing the eggs to hatch, after which the nauplii and  
231 remaining eggs were counted. The other days eggs were sampled for lipid analyses (Koski et al.  
232 unpublished). Daily, 500 ml of water from each mesocosm were filtered through 50  $\mu\text{m}$  sieve to  
233 account for background eggs and faecal pellets.

234

## 235 *Faecal pellet measurements and calculations*

236 Faecal pellets were sampled every other day after counting and fixed in 4% formalin for later size  
237 measurements. Pellets were measured by using an inverted microscope at 100 x magnification.  
238 Length and width of at least 30 pellets were measured for each of the sampling dates. Volume was  
239 calculated as the volume of a cylinder.

240

## 241 *Statistics*

242 Comparisons between mesocosms were done with One-way ANOVA, but with Kruskal Wallis  
243 ANOVA on Ranks if data could not be normalized. General Linear Method 2-way ANOVA was  
244 used to compare faecal pellet sizes. Holm-Sidak or Dunn's *post hoc* pair-wise comparisons were  
245 carried out when the ANOVAs gave significant differences. Data reduction was conducted on fatty  
246 acid, sterol, microplankton and chlorophyll by use of principle component analysis (PCA). A proxy  
247 variable, representing the group of significantly correlated variables on each different principle  
248 components, was tested against egg production, faecal pellet production and hatching success using  
249 stepwise multiple regression analysis. Hatching values were arcsine transformed and egg and faecal



250 pellet production data were square-root transformed, to meet normality and equal variance  
251 requirements. The statistical packages Sigma Stat and PASW were used for the analyses.

252

## 253 **Results**

### 254 *Mesocosm development, chlorophyll a, phyto- and microplankton*

255 The temperature increased in the mesocosms and in the ambient water from 6.3°C on the first day to  
256 8.7°C at the last day (data not shown). The temperature of the incubations was kept constant at 7 °C  
257 for the first 6 days and increased to 7.5°C at day 7 till the end of the experiment. The temperature  
258 change in the mesocosms did therefore not transfer to the incubations.

259

260 The total Chl *a* concentrations showed that all manipulated mesocosms developed phytoplankton  
261 blooms, while the ambient water remained at low post-bloom concentrations throughout the  
262 experimental period (Fig. 1a). An un-manipulated mesocosm, mesocosm A, not presented in this  
263 study, developed the same way as the ambient outside the mesocosms indicating that the  
264 mesocosms enclosure did not generate artificial growth conditions (H.H. Jakobsen, J.C.  
265 Nejstgaard and G. Pohnert pers. com). Mesocosm F inoculated with the highest amount of  
266 *Skeletonema marinoi* both reached the highest total Chl *a* concentration and culminated at day 7,  
267 one day before all other mesocosms. Mesocosm B and C showed a less pronounced peak with the  
268 largest fraction of the Chl *a* (> 10 µm) culminating around day 12 (Fig. 1b). Mesocosm E  
269 inoculated with a lower amount of *S. marinoi* showed an intermediate development in Chl *a*. *S.*  
270 *marinoi* were a major component of the phytoplankton in both mesocosms E and F, and reached  
271 peak concentrations of 133 and 480 µg C L<sup>-1</sup>, respectively (Fig. 2a). *S. marinoi* were also detected  
272 in the other mesocosms (B and C) but at extreme low concentrations (< 6 µgC L<sup>-1</sup>). Colonies of  
273 *Phaeocystis pouchetii* (Hariot) Lagerheim followed the decline of the *S. marinoi* bloom in  
274 mesocosms E with maximum concentrations ranging between 400 and 670 µgC L<sup>-1</sup> and coincided  
275 with the *S. marinoi* bloom in mesocosms F maintaining concentrations about 300 µgC L<sup>-1</sup> during  
276 days 8-10. In mesocosms B and C *P. pouchetii* colonies were the dominant phytoplankton biomass  
277 >15 µm (peak 1300 and 1200 µgC L<sup>-1</sup> respectively, Fig. 2). Heterotrophic dinoflagellates (sum of  
278 *Gyrodinium spirale* (Bergh) Kofoid and Swezy, *G. dominans* Hulbert and *Protoperidinium bipes*  
279 Poulsen) were found in similar concentrations in all mesocosms (100-150 µgC L<sup>-1</sup>; Fig. 2a). While  
280 the concentrations of ciliates were below 100 µgC L<sup>-1</sup> in both the ambient water and the mesocosm  
281 B, the ciliates reached higher concentrations in mesocosms with *S. marinoi* (C, E, F), with the  
282 highest concentration in mesocosm E (400 µgC L<sup>-1</sup>, Fig 2). The relative contribution of the protist  
283 types from day 4 and onward is presented in Fig. 2b.

284

285 *Chemical composition*

286 Fatty acids

287 The polyunsaturated fatty acids (PUFA) in mesocosms B and C were dominated by 18:3(n-6) and  
288 22:6(n-3) (Table 2). In mesocosm C that had received the additional Si addition the fatty acid  
289 16:1(n-7) which is typical for diatoms could be detected in higher amounts than in mesocosm B.  
290 Algae from mesocosm E and F had considerably higher proportion of 16:1(n-7) and 20:5(n-3) than  
291 those of mesocosms B and C. High levels of 22:6(n-3) were also detected in these mesocosms but  
292 highest in mesocosm F (Table 2). The monounsaturated fatty acids (MUFA) and PUFA followed  
293 the same pattern as the bloom development (Fig. 3).

294

295 Sterols

296 The main particulate sterols were cholesterol, brassicasterol and sitosterol (Fig. 3). The sterol  
297 content (total sterol) was significantly correlated with *P. pouchetii* ( $R^2 = 0.65$ ,  $p < 0.001$ ). In  
298 mesocosm F particularly high concentrations of cholesterol were detected.

299

300 PUA

301 The dynamics of the polyunsaturated aldehydes is described elsewhere (Vidoudez et al. 2011).  
302 Heptadienal and octadienal production was correlated to *S. marinoi* only, while decadienal  
303 concentration was correlated to the combined densities of *P. pouchetii* and *S. marinoi*.

304

305 *Data reduction*

306 Data reduction (PCA) sorted the food environment into 4 major components that explained 87% of  
307 the variance of the variables in the analysis (Table 3). Component 1 was composed of the  
308 introduced diatom *S. marinoi*, hepta-, octa- and decadienal and Chl *a* >10µm, and to a lesser degree  
309 cholesterol and monounsaturated fatty acids (MUFA). The second component was composed of *P.*  
310 *pouchetii*, the brassica-, campe- and sitosterols. The third component was based on the ciliates, the  
311 heterotrophic dinoflagellates, *G. spirale* and *P. bipes* and to a lesser degree on *G. dominans*.  
312 Component 4 was composed of the PUFAs 22:6(n-3), 18:3(n-3) and 18:3(n-6) and to a lesser degree  
313 20:5(n-3).

314

315 *Egg production*

316 After initial drop from the first to the second day of incubation (between days 3 and 4) average egg  
317 production rates (EPR: eggs female<sup>-1</sup> day<sup>-1</sup>) in all mesocosms increased gradually with time from ca  
318 10 eggs female<sup>-1</sup> day<sup>-1</sup> till ca 80 eggs female<sup>-1</sup> day<sup>-1</sup> in the end of the experiment (Fig. 4a). EPR in  
319 filtered seawater (FSW) dropped to 0 at the third measurement (day 5) while in the ambient

320 seawater (day 7-14) the average EPR measured  $12 \pm 7$  eggs female<sup>-1</sup> d<sup>-1</sup> ( $\pm$  SE) and did not change  
321 significantly over time (Kruskal Wallis one-way ANOVA,  $H_6 = 7.1$ ,  $p = 0.314$ ). There were no  
322 significant differences in egg production rates between mesocosms when compared over the whole  
323 period (days 5-14), but the egg production rates at the final day (day 14) differed significantly  
324 between the ambient water and each of the mesocosms C, E and F ( $p < 0.05$ , Dunn's *post hoc*  
325 comparison).

326  
327 The maximum daily egg number was highest (232 eggs) for a female incubated in mesocosm E  
328 water, but similarly high maximum numbers were also in the other mesocosm treatments (167,  
329 173 and 202 eggs from water from mesocosm F, B and C respectively, Table 1).

330  
331 The fraction of spawning females increased with time (Fig. 4b) but was significantly lower in the  
332 ambient food treatment compared to all the mesocosm treatments (Holm-Sidak *post hoc* comparison  
333 of means,  $p > 0.05$ ). Additionally, there was a significant difference between the fraction of females  
334 producing eggs in waters from mesocosm B and C (Holm-Sidak *post hoc* comparison of means,  $p >$   
335  $0.05$ ).

336  
337 The cumulative egg production was highest in the treatment with water from mesocosm F but  
338 lowest and almost half the value in the treatment from mesocosm B (Table 1). Female mortality was  
339 highest in the incubations from mesocosms B and E (35 and 40% respectively). No female died  
340 after the 12 day incubations from mesocosm F, which also had highest percent of producing females  
341 (88%, Table 1). The cumulative egg production does not correct for loss of females in the  
342 incubations as time went on, and reflects therefore the potential production of a population  
343 receiving the different treatments.

344  
345 Due to the observed 2 day adjustment in EPR to the food availability (Fig. 4a), stepwise multiple  
346 regression was run on EPR excluding the EPR on the first 2 days of the experiment (days 3 and 4)  
347 and excluding the FSW treatment. Hence, due to this 2 day delay in EPR in response to the food  
348 environment, all correlations were done on the food available 2 days earlier. The environmental  
349 variables used in the analysis were based on the PCA data reduction, but using the measures of *S.*  
350 *marinoi* as a representative for the highly correlated variables on principal component (PC) 1, *P.*  
351 *pouchetii* for PC2, ciliates for PC3 and 22:6(n-3) for PC4. Additionally the variables that had lower  
352 but significant loading on the different PCs were added separately to the regression analyses. These  
353 were cholesterol (for MUFA on PC1), *G. dominans* (PC3) and 20:5(n-3) (PC4, but also high on  
354 PC3; Table 3). Egg production rates of *C. finmarchicus* were best explained by the 22:6(n-3) fatty

355 acid (51% of the total variation in EPR explained) but the combination of the protoplankton types  
356 *P. pouchetii* and ciliates contributed additional 27% to the model explanation. Finally by adding *S.*  
357 *marinoi* to the model improvement the explanation power by extra 3% (Stepwise Multiple  
358 Regression,  $R^2 = 0.81$ ,  $F_4 = 41.7$ ,  $p < 0.001$ , Table 4, Fig. 5). To further investigate the effects of  
359 specific food types and PUA on the observed egg production rates we used the method described in  
360 detail in Irigoien et al. (2005) based on the mixing model by Jónasdóttir et al. (1998). The relation  
361 between the residuals of the regression between EPR and total protist carbon (shown in Fig 5e)  
362 were tested against the fraction of relative abundance of *S. marinoi* and *P. pouchetii* in the food  
363 environment (Fig. 6a, b). The regressions were not significant which means that none of these food  
364 types were specifically important for *C. finmarchicus* egg production rates. The same was apparent  
365 with the relative abundance of ciliates ( $R^2 = 0.00$ ;  $P = 0.87$ ) and dinoflagellates ( $R^2 = 0.02$ ;  $P = 0.32$ ;  
366 plots not shown). Similarly, no negative effects were apparent when the concentration of dissolved  
367 and particulate PUA were related to the residuals of EPR (Fig. 6c,d) ( $R^2 = 0.00$  and  $R^2 = 0.00$  ; $P =$   
368  $0.87$  and  $P = 0.87$  respectively).

369

#### 370 *Hatching*

371 Hatching success of eggs increased from ca 60% on day one (where eggs made from diet previous  
372 to the incubations) to 83-89% hatching (Fig. 4c, Table 1). No difference was found in hatching  
373 success between any of the mesocosm treatments (Kruskal Wallis ANOVA on arcsine transformed  
374 hatching data:  $H_4 = 4.5$ ,  $p = 0.35$ ) when day 1 is excluded, and no significant difference within the  
375 treatments during the incubations. Koski et al. (unpublished) presents in further details the hatching  
376 and the eggs and naupliar development in the present study.

377

#### 378 *Faecal pellet production*

379 Number of faecal pellets produced per female per day (Table 1) differed significantly between the  
380 mesocosm treatments (One way ANOVA,  $F_4 = 6.97$ ,  $p < 0.001$ ). Significant differences were  
381 observed between pellet production of copepods feeding on water from mesocosm C produced  
382 significantly more faecal pellets compared to copepods feeding on mesocosm B. The copepods in  
383 mesocosm C, E and F produced significantly higher number of pellets compared to the copepods  
384 feeding in the ambient water treatment (Holm-Sidak *post hoc* comparisons at  $p = 0.05$ ). In all but  
385 the ambient water the faecal pellet production increased for the first 7-11 days after which the  
386 production decreased again.

387

388 Faecal pellet length and consequently their volume (Fig. 4d) increased significantly with time in all  
389 mesocosm treatments (linear regression for all mesocosms  $p < 0.001$  with  $R^2 = 0.54$ ,  $0.51$ ,  $0.19$  and

390 0.12 for mesocosms B, C, E and F, respectively on volume, data not shown). There was a  
391 significant difference in faecal pellet volume size between the mesocosms, where pellets from  
392 mesocosm B were significantly larger than the pellets from all the other mesocosms (Holm Sidak  
393 *post hoc* pairwise comparison  $p = 0.05$ ).

394  
395 Faecal pellet production rate as faecal volume (FPR:  $\mu\text{m}^3 \text{female}^{-1} \text{day}^{-1}$ ) of *C. finmarchicus* were  
396 best explained with the combination of the concentrations of ciliates and *P. pouchetii*, and to a  
397 lesser degree the 22:6(n-3) fatty acid (Stepwise Multiple Regression  $R^2 = 0.71$ ,  $F_3 = 44.0$ ,  $p < 0.001$ ,  
398 Table 4). The model included the Chl *a* in the size fraction 5-10 $\mu\text{m}$  as more realistic representative  
399 of PC 1 for faecal pellet production than cholesterol. The individual correlations are demonstrated  
400 in Fig. 7.

401  
402 There was a significant positive relationship between FPR and egg production rates ( $R^2 = 0.79$ ;  $p >$   
403 Fig. 8).

#### 404 405 **Discussion/Conclusion**

406 The development of the plankton communities in the 4 mesocosms and the ambient water were well  
407 suited for a comparative study as it generated a wide variety of food types and chemical  
408 compositions at broad concentration ranges. There were mainly 2 types of systems developing, one  
409 dominated with *Phaeocystis pouchetii*, the fatty acids 18:3(n-6) and 22:6(n-3) and cholesterol, and  
410 medium levels of decadienal and low levels of heptadienal, and the other with *Skeletonema marinoi*,  
411 the fatty acids 16:1(n-7), 20:5(n-3) and 22:6(n-3) increasing with time and high levels of hepta- and  
412 decadienal PUAs. Ciliates and heterotrophic dinoflagellates increased with time and peaked at  
413 different times and different concentrations in all mesocosms.

414  
415 From day 7 and onwards in mesocosms F and from day 9 and 10 the mesocosms B, C and E, food  
416 availability was very abundant ( $> 800 \mu\text{g C L}^{-1}$ , Fig. 2); a concentration by which *Calanus*  
417 *finmarchicus* should not have experienced food limitation (Båmsted et al. 1999). The maximum  
418 faecal pellet production rate was achieved between 600-1000  $\mu\text{gC L}^{-1}$  (Fig 7e), while maximum egg  
419 production was achieved between 400 and 700  $\mu\text{gC L}^{-1}$  (Fig. 5e). Similar egg production in all  
420 mesocosms (B-F) could imply that individual food types dominating the different mesocosms (Fig.  
421 2) were not important in the determination of reproductive success. However, copepods do not  
422 necessarily have fed on them in proportion. According to the optimal foraging theory *C.*  
423 *finmarchicus* could have allowed itself to be selective with the high concentration of mixed diet  
424 available (Fig. 2) and avoid the least favourable food items. Based on the high PUA content of *S.*

425 *marinoi* (1.2 - 4.2 fmol cell<sup>-1</sup>, Ribalet et al. 2007) we could expect avoidance of this potentially  
426 harmful diatom. There are, however, several indicators that *C. finmarchicus* in our study did not  
427 specifically avoid *S. marinoi*. The only direct measure of ingestion is from the parallel study of  
428 Barofsky et al. (2010) that report that ingestion of *S. marinoi* was highest 1-3 days after the peak of  
429 the *S. marinoi* blooms in mesocosm E and F (their mesocosm 1 and 2 respectively; measured every  
430 other day). This is during the decline of the bloom when PUAs were expected to be at its highest  
431 according to the study of Ribalet et al. (2007). The second indication of *C. finmarchicus* actively  
432 feeding on *S. marinoi* is based on fatty acid composition of the females (presented in Koski et al.  
433 unpublished). The diatom fatty acid 16:1(n-7) was found in significantly higher concentrations in  
434 females from the *S. marinoi* impregnated mesocosms E and F compared to mesocosms B and C.  
435 Koski et al. (unpublished) additionally show that the fatty acids in the eggs did not differ from  
436 seston fatty acids, which indicates no selective feeding, and no selective control of fatty acids from  
437 females to the eggs. Therefore, even though we cannot state that no selection took place we can say  
438 with certainty that *C. finmarchicus* did not avoid eating *S. marinoi*.

439

440 Faecal pellet volume production (FPR) is a good indicator of *Calanus* feeding (e.g. Nejstgaard et al.  
441 2001b). The faecal pellet production was high (30-40 pellets female<sup>-1</sup> d<sup>-1</sup>) and similar in most  
442 mesocosms (Table 1) and comparable to e.g. measurements conducted by Rey et al. (1999) on *C.*  
443 *finmarchicus*. In our study FPR (volume based) was highest in mesocosms E, F and C where  
444 *Phaeocystis* was abundant, but FPR was lower in mesocosms B (Fig. 4d, Table 1) where there was  
445 less food diversity, and *P. pouchetii* dominated most of the period with 85-95 % of the biomass.  
446 Faecal pellet production is also dependent on the diet type (Besiktepe and Dam 2002, Dutz et al.  
447 2008), but in the present study it followed food abundance fairly well up to approximately 1000µg  
448 C<sup>-1</sup> (Fig7e). On the whole (all mesocosms) the pellet production was best explained with *P.*  
449 *pouchetii*, the PUFA proxy (22:6(n-3)) and ciliate concentrations but not *S. marinoi* (Table 4).  
450 However, as argued above and by the study of Barofsky et al. (2010) it does not imply that *C.*  
451 *finmarchicus* did not eat *S. marinoi*. Our measures also show that the pellet production in the water  
452 from these *S. marinoi* inoculated mesocosms was highest one or two days after the peaks of the  
453 relevant bloom (Fig. 4d). The peak of the particulate PUA coincided with the *S. marinoi* peaks and  
454 lasted couple of days after the blooms. Therefore, ingestion of potentially deterrent PUA was thus  
455 during and right after the peak of the bloom, when Barofsky et al. (2010) recorded the main feeding  
456 on *S. marinoi*. The decrease in faecal pellet production was directly related to decrease in the food  
457 availability and coincides with the carbon concentration of protoplankton (*P. pouchetii*,  
458 dinoflagellates and ciliates, Table 4).

459

460 The egg production rate of *Calanus finmarchicus* was relatively high in most of mesocosms, both in  
461 the beginning and the end of our study. We measured one of the highest egg number ever recorded  
462 of a single female over 24 hr period for this species: 200 and 230 eggs for individual females in  
463 mesocosms C and E (for comparison see overview in Jónasdóttir et al. 2005, 2008). Even though  
464 we compared the EPR with food condition 2 days earlier, and therefore did not use the 2 last days of  
465 the experiment in the analyses, the rise, peak and the fall of both *P. pouchetii* and the *S. marinoi*  
466 blooms were included in the diet for *C. finmarchicus* in the analyses (Fig. 2). Food availability was  
467 the main determinant for the observed EPR as strongly indicated by the close correlation between  
468 FPR and EPR (Fig. 8) and the highly significant correlation between protist carbon and EPR (Fig  
469 5e). The increase in spawning frequency (Fig. 4b) also follows the food availability. This  
470 correlation is based on a combination of different food types that build up the best explainable  
471 model for the variation in the egg production rate. Total protist carbon explained 71% of the  
472 variation in EPR (non linear model; Fig 5e). A more detailed analysis of the specific food  
473 environment including food quality indicators (PUFA and sterols) could however, explain 81% of  
474 the variation in the linear stepwise multiple regression model. The breakdown of the analysis  
475 revealed that seston PUFA (22:6(n-3)) and *P. pouchetii* together explained 71% of the variation in  
476 the observed EPR. Ciliates (as a proxy for flagellates, *Gyrodinium spirale* and *Protoperidinium*  
477 *bipebs*) and *Skeletonema* (as proxy for octa-, deca-, and heptadienal) made up the rest leaving only  
478 19% of the variation unexplained. Interestingly, *S. marinoi* and accordingly the potentially  
479 detrimental PUAs had positive, rather than negative effect on the EPR, in contrast to what was  
480 expected.

481

482 The source of the PUFAs in the mesocosms is a combination from the diatoms high in the fatty acid  
483 20:5(n-3) (Viso and Marty 1993) and dinoflagellates that are high in C18 and 22:6(n-3) PUFAs  
484 (e.g. Jónasdóttir 1994). *P. pouchetii* does on the other hand contain very low levels of PUFA  
485 (Nichols et al. 1991), but may be rich in camper-, brassica- and sitosterols as they were highly  
486 correlated with *P. pouchetii* in the present experiment (Table 3). PUFAs and sterols have been  
487 shown to be essential for copepod egg production and growth (e.g. Jónasdóttir and Kiørboe 1996;  
488 Hassett 2004; Klein Breteler, 2005), but do not seem to have been limiting the EPR in the present  
489 study. The different protist types therefore, seem to have complemented each other to generate ideal  
490 food condition for *C. finmarchicus* during the experiment.

491

492 The only difference in the reproduction between mesocosms observed in this study was in the  
493 fraction of spawning females in mesocosms B and C (Fig 4b, Table 1). EPR in mesocosms B water  
494 was also lower than in mesocosms C although the difference was not significant. We cannot explain

495 the difference in the spawning performance by the quality of the seston measured as  
496 polyunsaturated fatty acids normalized to carbon, but a significant positive correlation with low  
497 regression fit was found between seston cholesterol (carbon normalized) in mesocosms B and C and  
498 the fraction of spawning females (arcsine transformed,  $R^2 = 0.17$ ,  $p = 0.049$ ,  $n = 18$ ). However, this  
499 relationship did not hold when all mesocosms were included in the analysis. The best relationship in  
500 spawning performance including all mesocosms and ambient water was with carbon content of the  
501 seston ( $R^2 = 0.49$ ,  $p < 0.001$ ,  $n = 55$ ; data not shown). In any case, on the final day of the experiment  
502 there were no differences in the spawning performance of the females feeding on the different  
503 mesocosm water.

504

505 In this and most studies the PUA concentrations documented are the potential concentrations, i.e.  
506 the concentration that could be released from the algae, when wounded either when eaten or during  
507 senescence. The parameter dissolved PUA represents concentration of these metabolites in the  
508 water and thus the concentrations copepods and their eggs are exposed to. In addition to the PUA  
509 transferred through the diet of the female these dissolved PUA have the potential to directly affect  
510 hatching and naupliar survival. There are many studies that demonstrate inhibition of egg, embryo  
511 and naupliar development by direct exposure to dissolved PUA. Most of the studies that give PUA  
512 concentrations or enough information to calculate the PUA concentrations are summarised in Table  
513 5. Most reports of detrimental effects of PUA are found with the commercially available aldehyde  
514 decadienal, and inhibition of copepod egg hatching, cell division of embryos and starfish sperm  
515 motility were found at direct exposure at concentrations between 3,300-10,000  $\text{nmol L}^{-1}$  of  
516 dissolved decadienal. Studies on the effects of post ingestion of PUA producing diatoms (maternal  
517 effects) have given more variable results; from no effects to poor hatching and/or naupliar survival  
518 (see Table 5). Therefore the question arises if the PUA concentration in our mesocosm experiment  
519 was just too low to cause failure in hatching and development. The potential PUA concentration  
520 (bound in phytoplankton) in this study was between 0 - 17  $\text{nmol L}^{-1}$  where the dissolved PUA was  
521 somewhat lower (0 - 4.9 nM). These concentrations are orders of magnitude lower than those used  
522 in the laboratory studies that demonstrate detrimental damage on eggs and nauplii (Table 5).

523

524 While there are remarkably few records of natural concentrations of PUA – particulate or dissolved,  
525 the few available studies show very similar concentrations as we measured in our mesocosms (0 -  
526 28  $\text{nmol L}^{-1}$  particulate PUA and 0 - 0.1 nM dissolved PUA, see Table 5). Our particulate  
527 concentrations are therefore close to the highest reported concentrations in the Adriatic Sea (28  
528  $\text{nmol L}^{-1}$ ) with no apparent effect on the eggs and egg production. The dissolved fraction in the  
529 mesocosms was however 50 times higher than the ones measured at the same station as the high



530 particulate PUA in the Adriatic (Table 5) but still with no measurable effect on the egg hatching.  
531 The comparison summarised in Table 5 shows that most studies reporting detrimental effects of  
532 dissolved aldehydes used concentrations 2 to 7 orders of magnitude higher than ever measured in  
533 the natural environment and are therefore not useful, if not directly misleading for our  
534 understanding of how the chemical and biological environment affects impact copepod  
535 reproduction and growth. Those studies only demonstrate that the most active PUA, decadienal  
536 does not have any effect on egg hatching and naupliar development at highest natural  
537 concentrations and the natural dissolved concentrations can well increase over 1000 fold before  
538 they directly affect egg and naupliar development. Indeed, Wichard et al. (2007) who determined  
539 particulate PUA in the field did not find any correlation to the copepod egg production hatching or  
540 naupliar abnormality. Similarly, in a laboratory study Dutz et al. (2008) demonstrated that PUA was  
541 not the determining factor in hatching failure of the copepod eggs using potential concentrations 2-  
542 100 times higher than the highest potential natural concentrations and ingestion rates of PUA of 0.1  
543 nmol female<sup>-1</sup> d<sup>-1</sup>. Therefore presence of potentially PUA producing diatoms does not seem to be  
544 the exclusive factor controlling reproductive success of copepods in nature.

545

546 In summary, this study shows that *C. finmarchicus* egg production depends primarily on food  
547 availability as a combination of ciliate, *P. pouchetii* and the availability of the essential PUFAs  
548 representing range of diets of complimenting nutritional quality. Egg quality was high on the  
549 mesocosm diets and was not inhibited by any means. This study further demonstrates that one of the  
550 highest measured natural PUA concentrations both as potential PUA and dissolved PUA, associated  
551 with *S. marinoi* blooms did not affect *C. finmarchicus* reproduction success.

552

553

#### 554 **Acknowledgements:**

555 We thank the European FP6 Project “EUR-OCEANS” for granting funds to the project “Research  
556 integration by sharing facilities and cooperative development of new approaches: What does it take  
557 to create specific diatom blooms and quantify the effects on pelagic ecosystems in mesocosms?”  
558 with lead PI: JC Nejtgaard. A comprehensive mesocosm experiment can only be conducted by a  
559 substantial team of scientists, we therefore thank our colleagues A Barofsky, B Diekmann, A  
560 Spielmeyer, I Pesmatzoglou, Y Carotenuto, A Gerech, A Ianora, C Augustin, P Simonelli, C  
561 Troedsson, A Calbet, R Amin, U Båmstedt, J Bergkvist, C Stangenberg, S-Å Wängberg, for various  
562 participation in running the mesocosm experiment. We thank D Evensen, University of Bergen for  
563 providing phytoplankton cultures. CV and GP thank the German Research Foundation (PO 628/5-  
564 1), the SNF and the Volkswagen Foundation for funding. JCN was supported by the Norwegian

565 Research Council (NRC) project 152714/120 30. LY was partially supported by a EUR-OCEANS  
566 Mobility grant.  
567

568 **References**

- 569
- 570 Adolph S, Bach S, Blondel M, Cueff A, Moreau M, Pohnert G, Poulet S, Wichard T, Zuccaro A  
 571 (2004) Cytotoxicity of diatom-derived oxylipins in organisms belonging to different phyla. J  
 572 Exp Biol 207:2935-2946
- 573 Ask J, Reinikainen M, Båmstedt U (2006) Variation in hatching success and egg production of  
 574 *Eurytemora affinis* (Calanoida, Copepoda) from the Gulf of Bothnia, Baltic Sea, in relation to  
 575 abundance and clonal differences of diatoms. J Plankton Res 28: 683-694
- 576 Båmstedt U, Nejstgaard JC, Solberg PT (1999) Utilisation of small-sized food algae by *Calanus*  
 577 *finmarchicus* (Copepods, Calanoida) and the significance of feeding history. Sarsia 84:19-38
- 578 Ban S, Burns C, Castel J, Chaudron Y, Christou E, Escribano R, Umani S, Gasparini S, Guerro-  
 579 Ruiz F, Hoffmeyer M, Ianora A, Kang H-K, Laabir M, Lacoste A, Miralto A, Ning X, Poulet S,  
 580 Rodriguez V, Runge J, Shi J, Starr M, Uye S, Wang Y (1997) The paradox of diatom-copepod  
 581 interactions. Mar Ecol Prog Ser 157:287-293
- 582 Barofsky A, Simonelli P, Vidoudez C, Troedsson C, Nejstgaard J, Jakobsen H, Pohnert G (2010)  
 583 Growth phase of the diatom *Skeletonema marinoi* influences the metabolic profile of the cells  
 584 and the selective feeding of the copepod *Calanus* spp. J Plankton Res 32:263-272
- 585 Besiktepe S, Dam HG (2002) Coupling of ingestion and defecation as a function of diet in the  
 586 calanoid copepod *Acartia tonsa*. Mar Ecol Prog Ser 229:151–164.
- 587 Brown M, Dunstan G, Norwood S, Miller K (1996) Effects of harvest stage and light on the  
 588 biochemical composition of the diatom *Thalassiosira pseudonana*. J Phycol 32:64-73
- 589 Caldwell G, Bentley M, Olive P (2004) First evidence of sperm motility inhibition by the diatom  
 590 aldehyde 2E,4E-decadienal. Mar Ecol Prog Ser 273:97-108.
- 591 Carotenuto Y, Wichard T, Pohnert G, Lampert W (2005) Life-history responses of *Daphnia*  
 592 *pulicaria* to diets containing freshwater diatoms: Effects of nutritional quality versus  
 593 polyunsaturated aldehydes. Limnol Oceanogr 50:449-454.
- 594 Castellani C, Irigoien X, Mayor D, Harris R, Wilson D (2008) Feeding of *Calanus finmarchicus*  
 595 and *Oithona similis* on the microplankton assemblage in the Irminger Sea, North Atlantic. J  
 596 Plankton Res 30:1095-1116.
- 597 Claustre H, Marty J-C, Cassiani L (1989) Intraspecific differences in the biochemical composition  
 598 of a diatom during a spring bloom in Villefranche-sur-Mer Bay, Mediterranean Sea. J Exp Mar  
 599 Biol Ecol 129:17-32
- 600 Debes H, Eliassen K, Gaard E (2008) Seasonal variability in copepod ingestion and egg production  
 601 on the Faroe shelf. Hydrobiologia 600:247-265
- 602 Dutz J, Koski M, Jónasdóttir SH (2008) Copepod reproduction is unaffected by diatom aldehydes  
 603 or lipid composition. Limnol Oceanogr 53:225-235
- 604 Erga SR (1989) Ecological studies on the phytoplankton of Boknafjorden, Western Norway. 1. The  
 605 effect of water exchange processes and environmental factors on temporal and vertical  
 606 variability of biomass. Sarsia 74:161–176
- 607 Erga SR, Heimdal BR (1984) Ecological studies on the phytoplankton of Korsfjorden, western  
 608 Norway: the dynamics of a spring bloom seen in relation to hydrographical conditions and light  
 609 regime. J Plankton Res 6:67–90
- 610 Franz, HG, Colebrook, JM, Gamble, JC and Krause M. (1991) The zooplankton of the North Sea.  
 611 Neth, J. Sea Res. 28:1-52
- 612 Harrison P, Conway H, Holmes R, Davis C (1977) Marine diatoms grown in chemostats under  
 613 silicate or ammonium limitation. III. Cellular chemical composition and morphology of  
 614 *Chaetoceros debilis*, *Skeletonema costatum*, and *Thalassiosira gravida*. Mar Biol 43:19-31
- 615 Hassett R (2004) Supplementation of a diatom diet with cholesterol can enhance copepod egg-  
 616 production rates. Limnol Oceanogr 49:488-494
- 617 Heath MR (1999) The ascent migration of *Calanus finmarchicus* from overwintering depth in the  
 618 Faroe-Shetland Channel. Fish Oceanogr 8:84-99

- 619 Ianora A, Miralto A, Poulet S, Carotenuto Y, Buttino I, Romano G, Casotti R, Pohnert G, Wichard  
620 T, Colucci-D'Amato L, Terrazzano G, Smetacek V (2004) Aldehyde suppression of copepod  
621 recruitment in blooms of a ubiquitous planktonic diatom. *Nature* 429:403-407
- 622 Ianora A, Poulet S, Miralto A (1995) A comparative study of the inhibitory effect of diatoms on the  
623 reproductive biology of the copepod *Temora stylifera*. *Mar Biol* 121:533-539
- 624 Ianora A, Poulet S, Miralto A (2003) The effects of diatoms on copepod reproduction: a review.  
625 *Phycologia* 42:351-363
- 626 Irigoien X, Head R, Harris R, Cummings D, Harbour D, Meyer-Harms B (2000) Feeding selectivity  
627 and egg production of *Calanus helgolandicus* in the English Channel. *Limnol Oceanogr* 45:44-  
628 54
- 629 Irigoien X, Titelman J, Harris RP, Harbour D, Castellani C (2003) Feeding of *Calanus finmarchicus*  
630 nauplii in the Irminger Sea. *Mar Ecol Prog Ser* 262:193-200
- 631 Irigoien X, Verheye H, Harris R, Harbour D (2005) Effect of food composition on egg production  
632 and hatching success rate of two copepod species (*Calanoides carinatus* and *Rhincalanus*  
633 *nasutus*) in the Benguela upwelling system. *J Plankton Res* 27:735-742.
- 634 Jónasdóttir SH (1994) Effects of food quality on the reproductive success of *Acartia tonsa* and  
635 *Acartia hudsonica*: laboratory observations. *Mar Biol* 121:67-81
- 636 Jónasdóttir SH, Kiørboe T (1996) Copepod recruitment and food composition: do diatoms affect  
637 hatching success? *Mar Biol* 125:743-750
- 638 Jónasdóttir SH, Kiørboe T, Tang K, St.John M, Visser A, Saiz E, Dam H (1998) Role of diatoms in  
639 copepod production: good, harmless or toxic? *Mar Ecol Prog Ser* 172:305-308
- 640 Jónasdóttir SH, Richardson K, Heath MR, Ingvarsdóttir A, Christoffersen A (2008) Spring  
641 production of *Calanus finmarchicus* at the Iceland-Scotland Ridge. *Deep-Sea Res I* 55:471-489.
- 642 Jónasdóttir SH, Trung N, Hansen F, Gärtner S (2005) Egg production and hatching success in the  
643 calanoid copepods *Calanus helgolandicus* and *Calanus finmarchicus* in the North Sea from  
644 March to September 2001. *J Plankton Res* 27:1239-1259
- 645 Klein Breteler W, Schogt N, Rampen S (2005) Effect of diatom nutrient limitation on copepod  
646 development: role of essential lipids. *Mar Ecol Prog Ser* 291:125-133
- 647 Kleppel G, Holliday D, Pieper R (1991) Trophic interactions between copepods and microplankton:  
648 A question about the role of diatoms. *Limnol Oceanogr* 36:172-178
- 649 Koski M (2007) High reproduction of *Calanus finmarchicus* during a diatom-dominated bloom.  
650 *Mar Biol* 151:1785-1798
- 651 Koski M, Riser C (2006) Post-bloom feeding of *Calanus finmarchicus* copepodites: Selection for  
652 autotrophic versus heterotrophic prey. *Marine Biology Research* 2:109-119
- 653 Koski M, Wichard T, Jónasdóttir SH (2008) "Good" and "bad" diatoms: development, growth and  
654 juvenile mortality of the copepod *Temora longicornis* on diatom diets. *Mar Biol* 154:719-734
- 655 Lepage G, and Roy Cc (1984) Improved Recovery of Fatty-Acid through Direct Trans-  
656 Esterification without Prior Extraction or Purification. *Journal of Lipid Research* 25:1391-1396
- 657 Mayor D, Anderson T, Irigoien X, Harris R (2006) Feeding and reproduction of *Calanus*  
658 *finmarchicus* during non-bloom conditions in the Irminger Sea. *J Plankton Res* 28:1167-1179
- 659 Md Amin R, Koski M, Båmstedt U (2011) Strain-related physiological and behavioral effects of  
660 *Skeletonema marinoi* on three common planktonic copepods. *Mar Biol* ?-?-??
- 661 Menden-Deuer S, Lessard E (2000) Carbon to volume relationships for dinoflagellates, diatoms,  
662 and other protist plankton. *Limnol Oceanogr* 45:569-579
- 663 Meyer-Harms B, Irigoien X, Head R, Harris R (1999) Selective feeding on natural phytoplankton  
664 by *Calanus finmarchicus* before, during, and after the 1997 spring bloom in the Norwegian Sea.  
665 *Limnol Oceanogr* 44:154-165
- 666 Miralto A, Barone G, Romano G, Poulet S, Ianora A, Russo G, Buttino I, Mazzarella G, Laabir M,  
667 Cabrini M, Giavobbe M (1999) The insidious effect of diatoms on copepod reproduction.  
668 *Nature* 402:173-176
- 669 Nejstgaard J, Frischer M, Verity P, Anderson J, Jacobsen A, Zirbel M, Larsen A, Martínez-  
670 Martínez J, Sazhin A, Walters T, Bronk D, Whipple S, Borrett S, Patten B, Long J (2006)

- 671 Plankton development and trophic transfer in seawater enclosures with nutrients and  
672 *Phaeocystis pouchetii* added. Mar Ecol Prog Ser 321:99-121
- 673 Nejstgaard J, Gismervik I, Solberg P (1997) Feeding and reproduction by *Calanus finmarchicus*,  
674 and microzooplankton grazing during mesocosm blooms of diatoms and the coccolithophore  
675 *Emiliana huxleyi*. Mar Ecol Prog Ser 147:197-217
- 676 Nejstgaard J, Hygum B, Naustvoll L-J, Båmstedt U (2001a) Zooplankton growth, diet and  
677 reproductive success compared in simultaneous diatom- and flagellate- microzooplankton-  
678 dominated plankton blooms. Mar Ecol Prog Ser 221:77-91
- 679 Nejstgaard JC, Naustvoll L-J, Sazhin A (2001b) Correcting for underestimation of  
680 microzooplankton grazing in bottle incubation experiments with mesozooplankton. Mar Ecol  
681 Prog Ser 221:59-75
- 682 Nichols P, Skerrat J, Davidson A, Burton H, McMeekin T (1991) Lipids of cultured *Phaeocystis*  
683 *pouchetii*: signatures for food-web, biogeochemical and environmental studies in Antarctica and  
684 the Southern Ocean. Phytochemistry 30:3209-3214
- 685 Niehoff B, Klenke U, Hirche H-J, Head R, Harris R (1999) A high frequency time series at  
686 Weathership M, Norwegian Sea, during the 1997 spring bloom: the reproductive biology of  
687 *Calanus finmarchicus*. Mar Ecol Prog Ser 176:81-92
- 688 Pohnert G, Lumineau O, Cueff A, Adolph S, Cordevant C, Lange M, Poulet S (2002) Are volatile  
689 unsaturated aldehydes from diatoms the main line of chemical defence against copepods? Mar  
690 Ecol Prog Ser 245:33-45
- 691 Poulet S, Ianora A, Miralto A, Meijer L (1994) Do diatoms arrest embryonic development in  
692 copepods? Mar Ecol Prog Ser 111:79-86
- 693 Rey C, Carlotti F, Tande K, Hygum BH (1999) Egg and faecal pellet production of *Calanus*  
694 *finmarchicus* females from controlled mesocosms and *in situ* populations: influence of age and  
695 feeding history. Mar Ecol Prog Ser 188:133-148
- 696 Rey C, Harris R, Irigoien X, Head R, Carlotti F (2001) Influence of algal diet on growth and  
697 ingestion of *Calanus helgolandicus* nauplii. Mar Ecol Prog Ser 216:151-165
- 698 Ribalet F, Wichard T, Pohnert G, Ianora A, Miralto A, Casotti R (2007) Age and nutrient limitation  
699 enhance polyunsaturated aldehyde production in marine diatoms. Phytochemistry 68:2059-2067
- 700 Richardson K, Jónasdóttir SH, Hay SJ, Christoffersen A (1999) *Calanus finmarchicus* egg  
701 production and food availability in the Faroe-Shetland Channel and northern North Sea:  
702 October-March. Fish Oceanogr 8 (suppl. 1):153-162
- 703 Sarno D, Kooistra W, Medlin L, Percopo I, Zingone A (2005) Diversity in the genus *Skeletonema*  
704 (bacillariophyceae). II. An assessment of the taxonomy of *S. costatum*-like species with the  
705 description of four new species. J Phycol 41:151-176
- 706 Takabayashi, M., Lew, K., Johnson, A., Marchi, A., Dugdale, R., and Wilkerson, F. P. (2006) The  
707 effect of nutrient availability and temperature on chain length of the diatom, *Skeletonema*  
708 *costatum*. J Plankton Res 28:831-840.
- 709 Taylor R, Abrahamsson K, Godhe A, Wångberg S-Å (2009) Seasonal variability in polyunsaturated  
710 aldehyde production potential among strains of *Skeletonema marinoi* (Bacillariophyceae). J  
711 Phycol 45:46-53
- 712 Taylor R, Caldwell G, Dunstan H, Bentley M (2007) Short-term impacts of polyunsaturated  
713 aldehyde-producing diatoms on the harpacticoid copepod, *Tisbe holothuriae*. J Exp Mar Biol  
714 Ecol 341:60-69
- 715 Vidoudez C, Casotti R, Bastianini M, Pohnert G (2011a) Quantification of dissolved and particulate  
716 polyunsaturated aldehydes in the Adriatic Sea. Mar Drugs 9:500-513; doi:10.3390/md9040500
- 717 Vidoudez C, Nejstgaard JC, Jakobsen HH, Pohnert G (2011b) Dynamics of dissolved and  
718 particulate polyunsaturated aldehydes in mesocosms inoculated with different densities of the  
719 diatom *Skeletonema marinoi*. Mar Drugs 9:345-358; doi:10.3390/md9030345
- 720 Vidoudez C, Pohnert G (2008) Growth phase-specific release of polyunsaturated aldehydes by the  
721 diatom *Skeletonema marinoi*. J Plankton Res 30:1305-1313
- 722 Viso A-C, Marty J-C (1993) Fatty acids from 28 marine microalgae. Phytochemistry 34:1521-1533

- 723 Wichard T, Gerecht A, Boersma M, Poulet S, Wiltshire K, Pohnert G (2007) Lipid and fatty acid  
724 composition of diatoms revisited: Rapid wound-activated change of food quality parameters  
725 influences herbivorous copepod reproductive success. *Chem Bio Chem* 8:1146-1153  
726 Wichard T, Poulet S, Boulesteix A-L, Ledoux J, Lebreton B, Marchetti J, Pohnert G (2008)  
727 Influence of diatoms on copepod reproduction. II. Uncorrelated effects of diatom-derived  
728  $\alpha,\beta,\gamma,\delta$ -unsaturated aldehydes and polyunsaturated fatty acids on *Calanus helgolandicus* in the  
729 field. *Prog Oceanog* 77:30-44  
730 Wichard T, Poulet S, Pohnert G (2005) Determination and quantification of  $\alpha,\beta,\gamma,\delta$ -unsaturated  
731 aldehydes as pentafluorobenzyl-oxime derivatives in diatom cultures and natural phytoplankton  
732 populations: application in marine field studies. *Journal of Chromatography B* 814:155-161  
733 Williams PJLB, Egge JK (1998) The management and behaviour of the mesocosms. *Est Coast*  
734 *Shelf Sci* 46:3-14  
735

736 **Figure Legends:**

737 **Fig. 1** Daily development of a) total Chl *a* and b) Chl *a* in size fraction >10µm (µg L<sup>-1</sup>) in  
738 mesocosms: B (added phosphate and nitrate), C (added phosphate, nitrate and silicate), E (added  
739 phosphate, nitrate, silicate and 400 *S. marinoi* L<sup>-1</sup>) and F (added phosphate, nitrate, silicate and 400  
740 *S. marinoi* L<sup>-1</sup>) and the untreated water outside the mesocosms (Ambient). For detailed description  
741 of the mesocosm treatments see Materials and Methods. Shaded area shows the days not used in the  
742 analysis for EPR.

743

744 **Fig. 2** Daily development of A) protoplankton biomass (µg C L<sup>-1</sup>) and B) % composition from day  
745 4 in the ambient seawater and in mesocosm B, C, E and F. Black fill: the diatom *Skeletonema*  
746 *marinoi*, hatched fill: ciliates, white fill: total heterotrophic dinoflagellates (sum of *Gyrodinium*  
747 *spirale*, *G. dominans* and *Protoperidinium bipebs*) and stippled fill: the cryptophyte *Phaeocystis*  
748 *pouchetii*

749

750 **Fig. 3** Daily development of total fatty acids, monounsaturated fatty acids (MUFA),  
751 polyunsaturated fatty acids (PUFA), and total sterols, chole-, brassica-, sitosterols (all µg L<sup>-1</sup>) in the  
752 mesocosms B, C, E and F and ambient water. Symbols as in figure 1.

753

754 **Fig. 4** Daily development of *Calanus finmarchicus* a) egg production rate (EPR: eggs female<sup>-1</sup> day<sup>-1</sup>)  
755 <sup>1</sup>), b) fraction of females producing eggs, c) egg hatching success (%), and d) faecal pellet  
756 production (FPR: µm<sup>3</sup> female<sup>-1</sup> day<sup>-1</sup> x 10<sup>6</sup>) from mesocosms B, C, E and F and the ambient water  
757 (from day 7). EPR shows additionally EPR from filtered seawater incubation (day 3-6).

758

759 **Fig. 5** *Calanus finmarchicus* egg production rate (eggs female<sup>-1</sup> day<sup>-1</sup>) as a function of  
760 protoplankton biomass a) *P. pouchetii*, b) ciliates, c) *S. marinoi*, and d) *G. dominans*, e) total carbon  
761 concentration of protoplankton (all in µgC L<sup>-1</sup>) and f) concentration of the fatty acid 22:6(n-3) (µg  
762 L<sup>-1</sup>). Symbols as in Figure 1.

763

764 **Fig. 6** Relation between the residuals of the regression presented in Figure 5e and the carbon based  
765 proportion of a) *S. marinoi* and b) *P. pouchetii* and the concentrations of c) particulate PUA (µg L<sup>-1</sup>)  
766 and d) dissolved PUA (nM).

767

768 **Fig. 7** *Calanus finmarchicus* faecal pellet production (µm<sup>3</sup> female<sup>-1</sup> day<sup>-1</sup> x 10<sup>6</sup>) as a function of  
769 protoplankton biomass a) *P. pouchetii*, b) ciliates, c) *S. marinoi*, and d) *G. dominans*, e) total carbon

770 concentration of protoplankton (all in  $\mu\text{gC L}^{-1}$ ) and f) concentration of the fatty acid 22:6(n-3) ( $\mu\text{g}$   
771  $\text{L}^{-1}$ ). Symbols as in Figure 1.

772

773 **Fig. 8** Correlation between *Calanus finmarchicus* egg production rate (eggs female<sup>-1</sup> day<sup>-1</sup>) and  
774 faecal pellet production ( $\mu\text{m}^3$  female<sup>-1</sup> day<sup>-1</sup> x  $10^6$ ). Symbols as in Fig 1.



775 **Table 1.** *Calanus finmarchicus* biological rates in the different experimental treatments. Average egg production rate (EPR: eggs female<sup>-1</sup>  
776 day<sup>-1</sup>), cumulative egg production (eggs), non producing females (% Fem w/o eggs), female mortality (%), hatching success (H%), faecal  
777 volume production (FPR:  $\mu\text{m}^3$  female<sup>-1</sup> day<sup>-1</sup> x 10<sup>6</sup>) and faecal pellet production (# pellets: no. pellets female<sup>-1</sup> day<sup>-1</sup>). FSW: 0.2 $\mu\text{m}$   
778 filtered seawater control during days 3-6. Amb: ambient seawater control during days 7-14. All averages list  $\pm$  SE.  
779

Mesocosm	Treatment additions				EPR $\pm$ SE Day 5-14	EPR range Day 5-14	Cum EPR Day 5-14	% Fem w/o eggs	% Mortality	H% $\pm$ SE Day 5-14	FPR x 10 <sup>6</sup> Day 3-14	# Pellets Day 3-14
	N $\mu\text{mol L}^{-1}$	P	Si	<i>S. marinoi</i> cells L <sup>-1</sup>								
B	4.24	0.4	-	-	32 $\pm$ 6	0-173	4497	23	35	83 $\pm$ 2	25 $\pm$ 2	27 $\pm$ 2
C	4.24	0.4	3.61	-	46 $\pm$ 8	0-202	7959	15	20	88 $\pm$ 2	54 $\pm$ 4	43 $\pm$ 2
E	4.24	0.4	3.61	400	45 $\pm$ 7	0-232	5863	23	40	86 $\pm$ 3	45 $\pm$ 4	40 $\pm$ 3
F	4.24	0.4	3.61	1000	42 $\pm$ 8	0-167	8039	12	0	89 $\pm$ 3	43 $\pm$ 2	42 $\pm$ 2
FSW <sub>d 3-6</sub>	-	-	-	-	6 $\pm$ 3	0- 38	-	47	-	-	-	9 $\pm$ 3
Amb <sub>d 7-14</sub>	-	-	-	-	9 $\pm$ 5	0 - 90	-	50	20	89 $\pm$ 2	4 $\pm$ 0.5	11 $\pm$ 2

780

781

782

783 **Table 2.** Development of the major fatty acids in mesocosms B, C, E and F. The fatty acids 20:3(n-  
784 3) and 20:3(n-6) were either not detected (n.d.) or found in trace amounts (T). nm: Not measured.  
785

Day	16:1 (n-7)	18:1 (n-9)	18:2 (n-6)	18:3 (n-3)	18:3 (n-6)	20:1 (n-9)	20:2 (n-6)	20:4 (n-6)	20:5 (n-3)	22:1 (n-9)	22:2 (n-6)	22:6 (n-3)
<b>Mesocosm B</b>												
0	T	2.6	1.2	1.5	7.0	0.3	T	T	3.2	0.6	0.7	4.7
1	T	1.9	0.8	1.1	9.6	0.2	T	T	3.0	0.5	0.5	4.6
2	T	T	0.5	0.6	6.2	T	T	T	1.9	0.3	0.3	3.2
3	T	1.9	1.3	1.4	14.9	n.d.	n.d.	n.d.	2.3	0.3	T	4.4
4	9.8	4.0	2.9	4.9	51.3	0.3	n.d.	0.7	7.3	0.3	0.4	20.3
5	10.5	3.5	2.8	4.4	59.8	0.3	n.d.	1.3	12.4	0.3	0.4	32.4
6	9.0	5.2	3.1	4.2	59.6	0.3	n.d.	1.1	10.7	0.4	n.d.	56.3
7	8.4	6.0	3.3	3.6	44.9	0.4	n.d.	T	6.3	T	0.4	34.4
8	15.8	9.8	5.7	7.1	91.6	0.9	n.d.	2.5	15.5	T	0.9	81.1
9	n.d.	15.1	6.9	6.5	60.1	1.1	n.d.	3.0	11.2	T	1.0	55.6
10	T	23.4	15.3	11.8	132.8	1.9	n.d.	T	12.7	T	2.4	72.7
11	n.d.	19.7	13.0	9.4	83.4	1.8	n.d.	T	13.1	T	1.6	84.9
12	17.6	26.6	22.7	22.2	164.9	2.0	4.6	T	25.0	n.d.	1.7	196.4
13	17.3	25.7	21.2	14.7	124.3	1.9	4.4	T	14.1	2.2	2.1	129.4
<b>Mesocosm C</b>												
0	T	1.7	1.0	1.0	5.9	0.3	n.d.	n.d.	n.d.	0.7	0.7	3.6
1	T	1.7	0.8	1.3	14.3	0.3	n.d.	T	n.d.	0.8	0.7	6.5
2	T	1.3	0.5	0.7	8.5	0.3	n.d.	T	T	0.4	0.3	4.1
3	T	1.7	0.8	1.3	9.8	0.2	n.d.	T	1.8	0.3	0.2	5.6
4	11.3	3.5	1.8	3.6	40.9	0.2	T	0.8	7.7	0.3	0.6	27.6
5	15.9	4.3	2.8	5.4	57.5	0.2	T	1.2	8.7	0.3	0.6	44.2
6	21.6	5.4	3.5	7.4	77.2	0.3	T	1.1	14.8	0.5	1.1	59.5
7	21.6	5.7	2.6	5.2	68.6	0.5	T	1.6	13.3	0.6	1.0	50.2
8	16.5	7.4	3.9	5.2	51.0	0.9	T	2.6	13.7	1.2	1.1	47.5
9	15.6	8.0	3.7	4.1	50.1	0.8	T	T	14.0	1.2	1.0	37.6
10	9.1	9.8	n.d.	5.5	57.4	1.1	T	T	11.1	1.5	1.3	42.7
11	31.8	11.2	8.2	7.1	n.d.	1.2	n.d.	T	16.2	1.5	1.4	63.9
12	26.9	10.9	7.2	5.3	50.3	1.2	n.d.	T	9.1	1.5	1.3	43.9
13	92.4	22.5	23.2	15.6	165.4	2.1	4.6	5.5	27.5	2.3	2.6	226.2
<b>Mesocosm E</b>												
0	n.d.	T	0.6	0.9	4.9	n.d.	n.d.	n.d.	n.d.	n.d.	0.4	2.4
1	n.d.	T	n.d.	0.6	4.8	n.d.	n.d.	n.d.	T	n.d.	0.2	1.4
2	n.d.	n.d.	0.5	0.5	3.8	T	n.d.	n.d.	T	T	T	0.9
3	10.7	1.8	1.3	3.1	22.0	0.2	n.d.	0.6	6.3	0.3	0.3	16.8
4	n.m.	n.m.	n.m.	n.m.	n.m.	n.m.	n.m.	n.m.	n.m.	n.m.	n.m.	n.m.
5	76.0	n.d.	1.8	n.d.	95.7	n.d.	n.d.	n.d.	T	n.d.	n.d.	93.0
6	n.d.	n.d.	2.2	n.d.	134.8	n.d.	n.d.	n.d.	T	n.d.	n.d.	79.5
7	108.4	n.d.	2.4	n.d.	74.9	n.d.	n.d.	n.d.	T	n.d.	n.d.	57.1
8	159.5	T	2.9	7.6	64.2	n.d.	n.d.	n.d.	21.6	n.d.	n.d.	67.7
9	191.9	7.2	4.6	9.2	96.5	n.d.	n.d.	n.d.	22.2	n.d.	T	86.8
10	145.4	13.1	8.1	9.0	87.0	1.0	n.d.	3.4	36.1	1.1	1.1	80.4
11	67.9	12.5	7.1	8.5	53.5	1.0	n.d.	T	23.9	1.1	0.9	75.1
12	147.0	18.1	12.7	13.0	96.1	T	2.3	T	49.7	1.2	1.1	142.4
13	81.0	12.5	7.7	8.3	56.1	0.8	1.4	T	24.4	0.8	0.9	87.1
<b>Mesocosm F</b>												
0	T	1.8	0.6	0.9	5.4	T	n.d.	n.d.	n.d.	0.5	0.6	1.9
1	2.9	n.d.	0.5	0.5	4.5	0.2	n.d.	n.d.	T	0.3	0.4	2.5
2	3.4	1.2	n.d.	0.5	4.7	0.2	n.d.	T	T	0.3	0.3	2.3
3	9.9	1.4	0.7	1.3	10.0	0.2	n.d.	T	3.6	0.3	0.2	4.7
4	22.9	n.d.	0.6	0.8	16.3	n.d.	n.d.	n.d.	T	n.d.	T	10.8
5	108.3	2.9	1.8	5.8	82.8	n.d.	n.d.	1.3	28.7	n.d.	n.d.	80.2
6	171.2	3.7	2.4	7.8	92.9	n.d.	n.d.	T	52.6	n.d.	0.4	98.9
7	253.9	7.9	7.3	16.4	188.9	n.d.	n.d.	2.4	71.6	n.d.	T	140.6
8	223.2	9.0	7.0	15.7	110.2	T	T	3.8	57.1	n.d.	n.d.	135.2
9	284.1	5.5	n.d.	8.7	95.6	n.d.	n.d.	n.d.	41.0	n.d.	n.d.	106.8
10	105.6	7.3	3.6	8.1	74.5	T	n.d.	T	38.1	n.d.	n.d.	111.4
11	123.2	8.8	4.5	8.3	59.6	T	n.d.	T	42.4	0.6	0.9	104.4
12	183.2	14.0	4.1	11.8	79.6	n.d.	n.d.	n.d.	49.7	n.d.	n.d.	356.3
13	120.3	8.8	3.6	7.4	39.6	0.4	n.d.	n.d.	39.0	n.d.	T	136.4

786

787 **Table: 3**

788 Results from the data reduction by the Principal Component Analysis. The principal components  
 789 and their % contribution to explaining the variance in the whole dataset (combined = 87 %). The  
 790 scores show the rotated components acquired by using the Equamax method with Kaiser  
 791 Normalization in 10 iterations. Bold letters show highly correlated variables on each component,  
 792 bold italic variables that are moderately correlated on that variable. MUFA: mono unsaturated fatty  
 793 acids.

794

795

	Principal Component			
	1 54 %	2 17 %	3 10 %	4 6 %
Octadienal	<b>0.92</b>		0.17	0.14
Heptadienal	<b>0.92</b>		0.17	0.17
<i>Skeletonema marinoi</i>	<b>0.85</b>			0.39
Decadienal	<b>0.81</b>	0.30	0.31	0.13
Chlorophyll <i>a</i> > 10 µm	<b>0.71</b>	0.54		0.26
MUFA	<b>0.62</b>		0.57	0.48
Cholesterol	<b>0.64</b>	0.36	0.20	0.57
<i>Phaeocystis pouchetii</i>	0.17	<b>0.91</b>	0.17	
Brassicasterol		<b>0.87</b>		0.38
Campesterol		<b>0.80</b>	0.35	
Sitosterol		<b>0.80</b>	0.23	0.40
Cilates	0.31	0.17	<b>0.86</b>	
<i>Gyrodinium spirale</i>		0.24	<b>0.84</b>	0.37
<i>Protoperdinium bipes</i>		0.28	<b>0.81</b>	0.33
<i>Gyrodinium dominans</i>	0.47	0.23	<b>0.61</b>	0.34
Docosahexaenoic acid; 22:6(n-3)		0.14	0.49	<b>0.79</b>
Linoleic acid; 18:3(n-3)	0.20	0.41	0.33	<b>0.77</b>
Gamma Linolenic acid 18:3(n-6)	0.36	0.42	0.17	<b>0.73</b>
Eicosapentaenoic acid; 20:5(n-3)	0.42		0.51	<b>0.66</b>

796

797

798 **Table 4**

799 Results from multiple stepwise regression on *Calanus finmarchicus* egg production rates (EPR:  
 800 eggs female<sup>-1</sup> d<sup>-1</sup>) and faecal pellet production (FPR: μm<sup>3</sup> female<sup>-1</sup> d<sup>-1</sup>) and the food environment, *S.*  
 801 *marinoi*, *G. dominans*, *P. pouchetii*, ciliates, the fatty acids 22:6(n-3), 20:5(n-3) and cholesterol (or  
 802 Chl *a* in the size fraction 5-10 μm). The stepwise process selects only those variables (labelled  
 803 “in”) that contribute to the best regression. Variables not in the regression are labelled “out”. Model  
 804 statistics show R<sup>2</sup>: coefficient of determination of the multiple regression, *F*<sub>df</sub>: the F ratio with *df*:  
 805 degrees of freedom, significance value *p* of the multiple regression and number of observations *N* in  
 806 the regression. For each variable in the model, "F-to-remove" is the F statistic for its coefficient  
 807 within the regression; for each variable not in the model, "F-to-enter" is the F statistic that its  
 808 coefficient would have if it were the next variable added in the regression. *p*<sub>var</sub>: significance of the  
 809 variable within the regression where \*: *p* < 0.05, \*\*: *p* < 0.01, \*\*\*: *p* < 0.001.

810

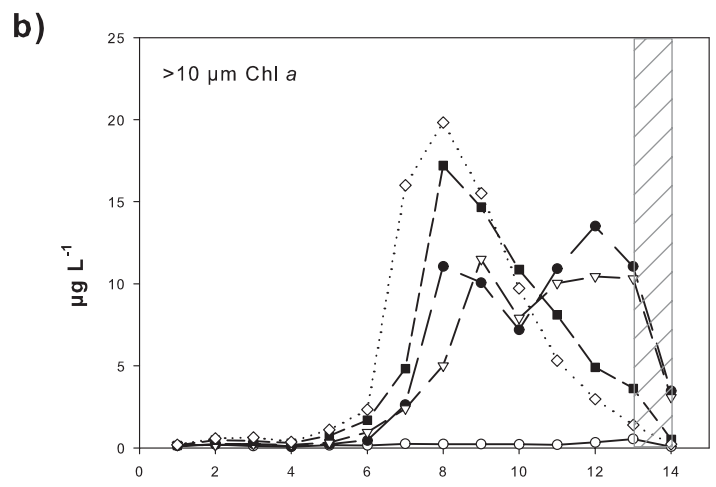
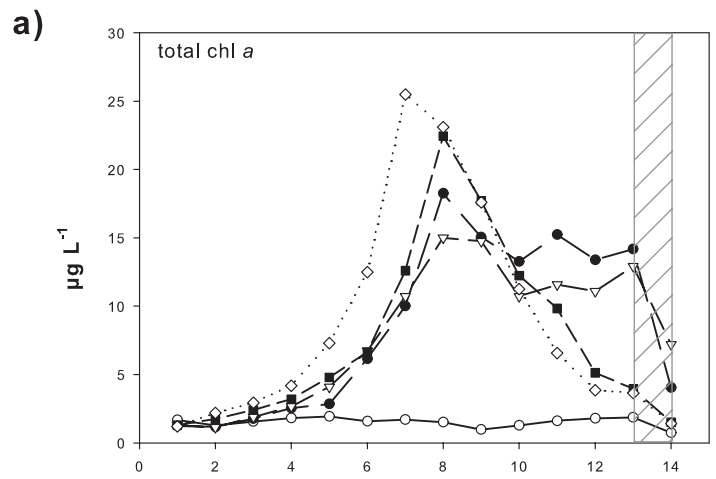
	Variable		F-to-remove	F-to-enter	p var
<b>EPR</b> R <sup>2</sup> = 0.81 F <sub>4</sub> = 41.7 p < 0.001 N = 45	<i>Skeletonema marinoi</i>	in	6.3		0.016*
	ciliates	in	15.0		<0.001***
	<i>Gyrodinium dominans</i>	out		1.1	0.292
	<i>Phaeocystis pouchetii</i>	in	20.6		<0.001***
	22:6(n-3)	in	27.4		0.001***
	Cholesterol	out		0.04	0.814
	20:5(n-3)	out		0.04	0.961
<b>FPR</b> R <sup>2</sup> = 0.78 F <sub>3</sub> = 43.3 p < 0.001 N = 54	<i>Skeletonema marinoi</i>	out		1.1	0.610
	ciliates	in	8.4		<0.006**
	<i>Gyrodinium dominans</i>	in	4.5		0.038*
	<i>Phaeocystis pouchetii</i>	in	43.6		<0.001***
	22:6(n-3)	in	10.9		0.002**
	Chlorophyll <i>a</i> 5-10μm	out		2.7	0.107
	20:5(n-3)	out		0.9	0.339

811

812 **Table 5.**  
813 Review of concentrations used for studies testing polyunsaturated aldehydes on various biological activities of copepods, cladoceran and  
814 echinoderms. All units transferred to nmol L<sup>-1</sup> (shaded column). Units reported in the respective publications are shown in bold; otherwise  
815 calculated from cell numbers and PUA content given in the respective publications. The average molecular weight of 150 g mol<sup>-1</sup> was used  
816 as representative for the most commonly tested decadi- and decatrienal aldehydes. Other aldehyde types have lower molecular weight and  
817 therefore transfer to nmol is conservative. Aldehyde types are: HD: Heptadienal, OD: Octadienal, OT: Octatrienal, DE: Decenal, DD:  
818 Decadienal, DT: Decatrienal, PUA: Polyunsaturated aldehydes  
819

Testing concentrations		Aldehyde types	Main effects	Source
$\mu\text{g mL}^{-1}$	nmol L <sup>-1</sup>			
<b>0.5 - 2.0</b>	3,300 – 13,300	DD DT-cis DT-trans	Hatching of <i>Temora longicornis</i> eggs reduced 10-15% at direct exposure of 3,300 nmol L <sup>-1</sup> DD, 40-60% at 6,700 nmol L <sup>-1</sup> and failed totally at 10,000 – 13,000 nmol L <sup>-1</sup> . Sea urchin egg division failure at >3,300 nmol L <sup>-1</sup> DD.	Miralto et al. 1999
0.6-600	<b>4,000-4,000,000</b>	DD OD DD	Cell division of echinoderm embryos first affected at direct exposure of 10,000 nmol L <sup>-1</sup> DD (50% division). Post ingestion effect on <i>C. helgolandicus</i> eggs lowest pot. PUA 4,000 nmol L <sup>-1</sup> with 20% reduction in hatching %. Remained 80% hatching till 400,000 nmol L <sup>-1</sup> and had 70% reduction at 4 million nmol L <sup>-1</sup> . NB: Eggs also exposed to increasing concentration of algae – can affect hatching (O <sub>2</sub> ).	Adolph et al. 2004
<b>0.05 - 50</b>	333 - 333,000	DD	Motility of starfish sperm decreased with increased direct exposure to DD. 50% decrease in motility at 10,000 nmol L <sup>-1</sup> .	Caldwell et al. 2004
<b>0.5 - 1.5</b>	3,300 – 10,000	DD	Post ingestion effect of the diatom <i>Skeletonema. C. helgolandicus</i> nauplii survive to CII after 3 & 5 days and to NII after 7 days of maternal and neonatal feeding. Ingestion ca 100 pg DD female <sup>-1</sup> d <sup>-1</sup> = 0.0007 [sic. 0.005] nmol female <sup>-1</sup> d <sup>-1</sup> . Addition of dissolved DD (direct exposure) 10,000 nmol L <sup>-1</sup> to diets resulted in arrested development at CII while 3,300 and 6,700 nmol DD L <sup>-1</sup> addition did not affect development.	Ianora et al. 2004
<b>0.5 - 4.0</b>	3,300 – 27,000	DD	Post ingestion effects of pure diatom diets on Daphnia embryos. First effect of 50% hatching after 5 clutches. Direct exposure of developing embryos to DD first affected at >10,000 nmol L <sup>-1</sup> .	Carotenuto et al. 2005
1.4 – 15.0	<b>9,300 – 100,000</b>	DD OD HD	No effect on egg production of <i>Tisbe</i> or hatching after 3 day feeding on pure diatom diets with PUA potential. Direct exposure of nauplii to DD showed lethal dose (LD <sub>50</sub> = 50% death) 9,300 nmol L <sup>-1</sup> . Other PUA types less active. Nauplii most sensitive to direct exposure of DD, females LD <sub>50</sub> > 40,000 nmol L <sup>-1</sup> DD.	Taylor et al. 2007
0.1 - 0.6	53 - 638	OD OT DT	Post ingestion effect of PUA from var. diatom diets tested on copepod <i>T. longicornis</i> . Ingestion of 0.1 nmol PUA female <sup>-1</sup> d <sup>-1</sup> (should be 100pmol d <sup>-1</sup> not 100 nmol d <sup>-1</sup> ) did not negatively affect egg production or hatching success (10 days). PUA sum of OD, OT and DT.	Dutz et al. 2008
0.002	<b>11.2</b>	HD	Competition of fatty acids in the copepod gut ( <i>T. longicornis</i> ) when enzymes transform PUFA	Wichard et al. 2007

		OD OT DD DT	to PUA. Supplements of fatty acids improve hatching which is actually not very impaired by presence of high concentration of PUA.	
<b>Measurements <i>in situ</i></b>				
$1 \times 10^{-4}$	0.7	HD OD OT DD DT	English Channel natural diatom population during spring. Very high PUA per cell ( $47 \text{ fm cell}^{-1}$ ) mainly DT and OD. Values are potential PUA.	Wichard et al. 2005
$2 \times 10^{-6} - 1 \times 10^{-4}$	0.01 - 1.3	HD OD OT	Seasonal PUA concentrations from Gullmarsfjorden, Sweden. Diatoms isolated and tested in the laboratory. Values are potential PUA. Higher PUA in senescing algae. Highest in senescing spring population.	Taylor et al. 2009
$4 \times 10^{-4}$	2.7	HD OD OT	Natural concentration (sum potential PUA) during spring bloom offshore Dichanto, Chile. Variation in egg production, low hatching and high abnormal nauplii could not be explained with natural PUA or doubling of natural PUA concentrations.	Poulet et al. 2007
$1 \times 10^{-5} - 3 \times 10^{-5}$ 0.002 - 0.2	0.1 - 0.3 ( <i>in situ</i> ) 12-143 (exp)	OT OD DT HT	Natural concentration during natural diatom assembly in the English Channel and in feeding experiments using uni-algal isolates. Sum of potential PUA. Hatching and egg production of <i>C. helgolandicus</i> positively correlated with diatoms & PUA. Experiments with high PUA producers resulted in no effect of PUA on hatching or larval abnormality.	Wichard et al. 2008
$2 \times 10^{-5} - 0.004$	<b>0.1 - 28</b> (part) <b>0 - 0.1</b> (dissolved)	HD OD	Natural concentrations in the Adriatic. Suggests that lysis of <i>Skeletonema marinoi</i> can contribute significantly to dissolved PUA. One station with the high concentration of both potential and dissolved PUA.	Vidoudez et al 2011a
0 - 0.003 0 - $7 \times 10^{-4}$	<b>0 - 17</b> (part) <b>0 - 4.9</b> (dissolved)	HD OT OD DD DT	Range of the maximum values measured in mesocosms B, C, E and F. Sum of all measured dienal and trienal PUAs. Dominant PUA (peak concentration measured), HD ( $7 \text{ nmol L}^{-1}$ ) and DD ( $9 \text{ nmol L}^{-1}$ ) in mesocosms E& F.	This study Vidoudez et al. 2011b

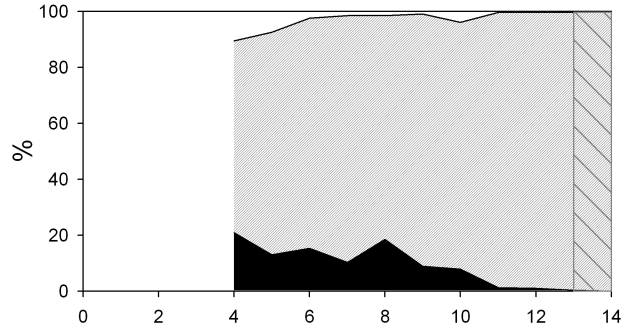
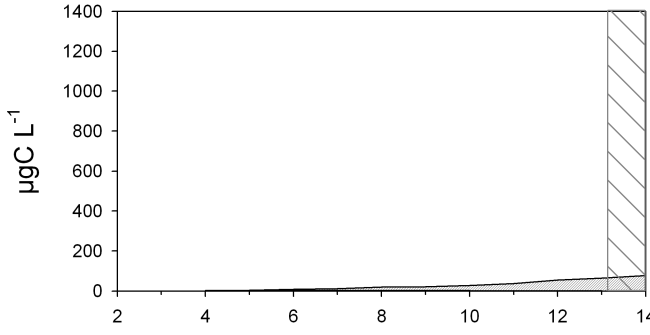


- Ambient
- B
- ▽ C
- E
- ◇ F

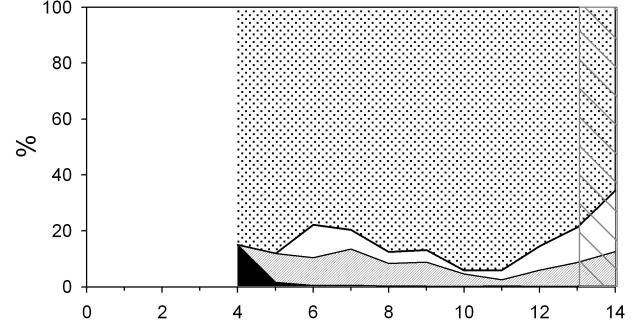
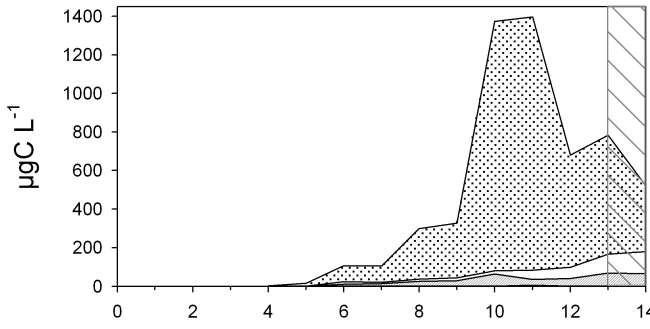
**A) Biomass  $\mu\text{gC L}^{-1}$**

**B) % composition**

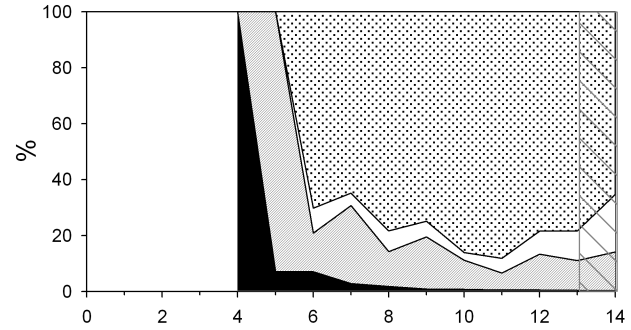
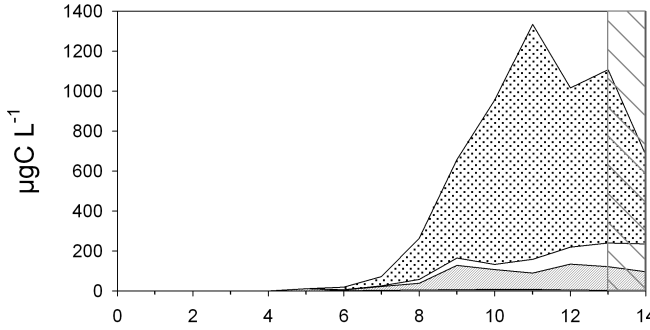
Ambient seawater



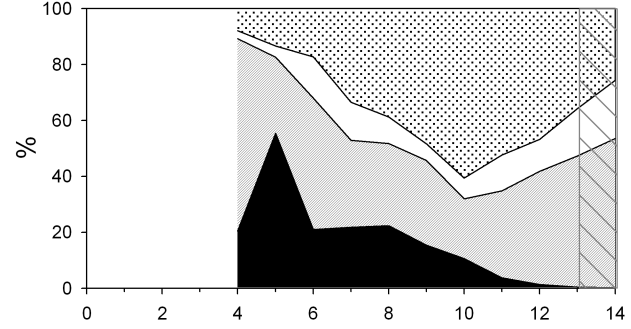
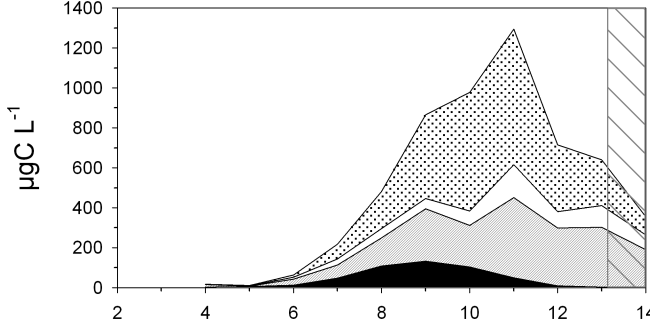
Mesocosm B



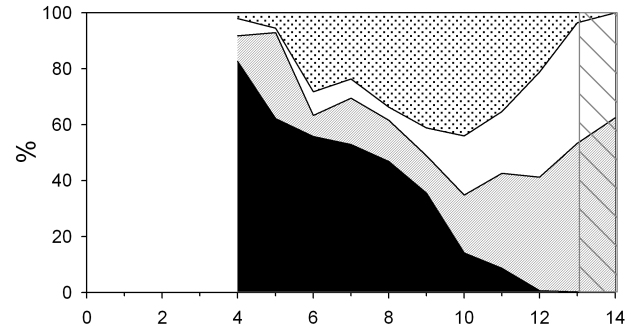
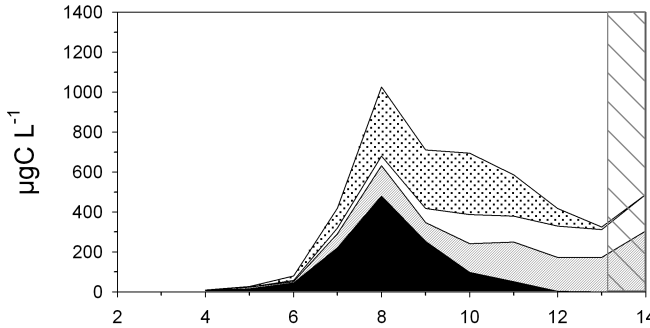
Mesocosm C



Mesocosm E



Mesocosm F

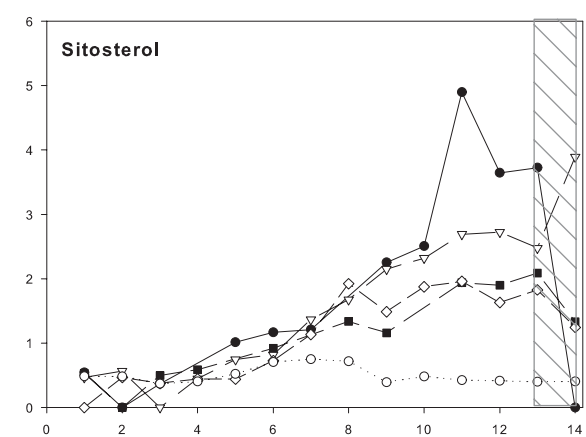
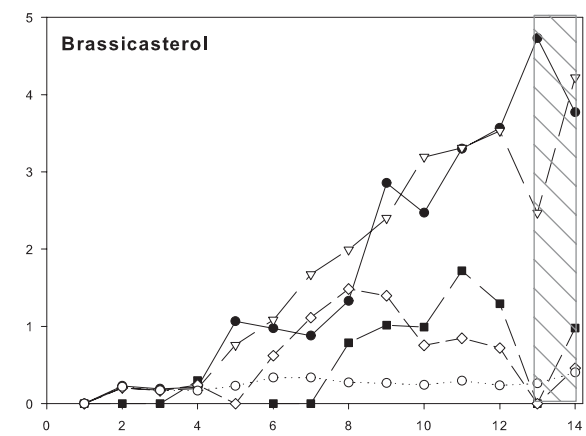
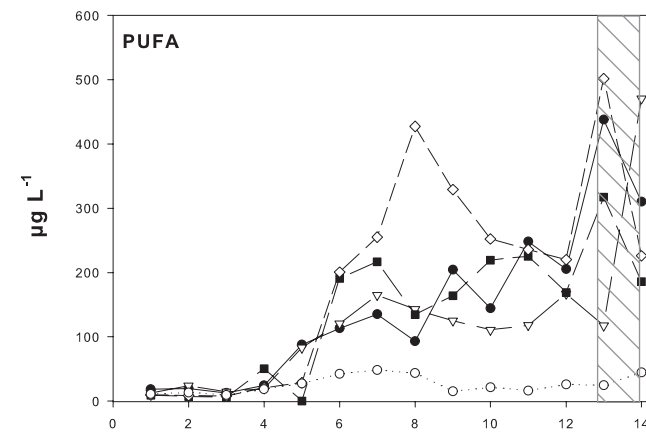
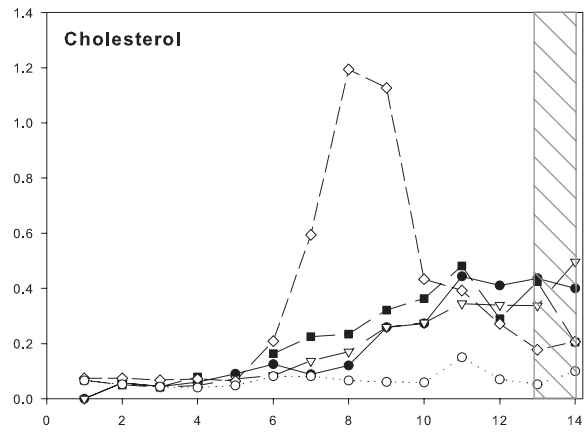
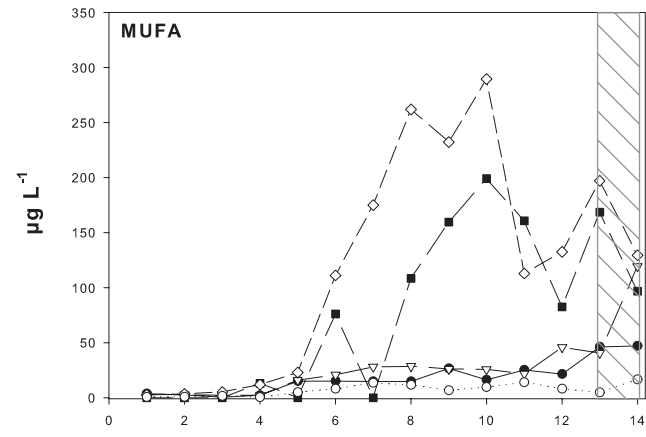
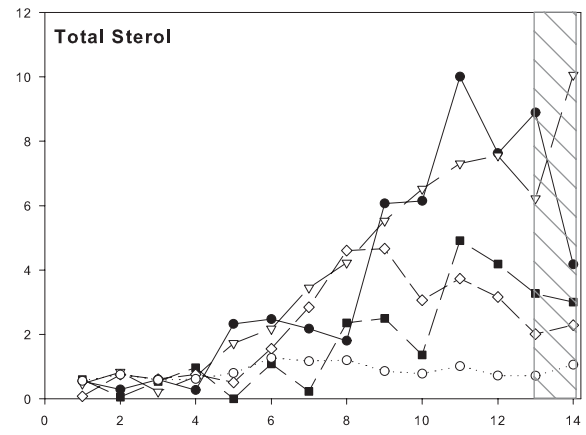
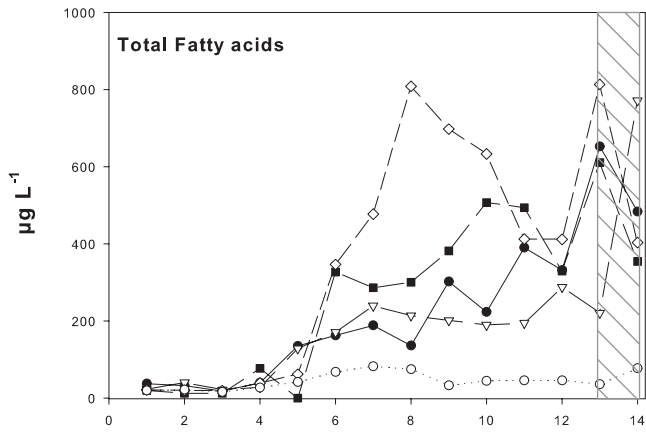


Day

Day

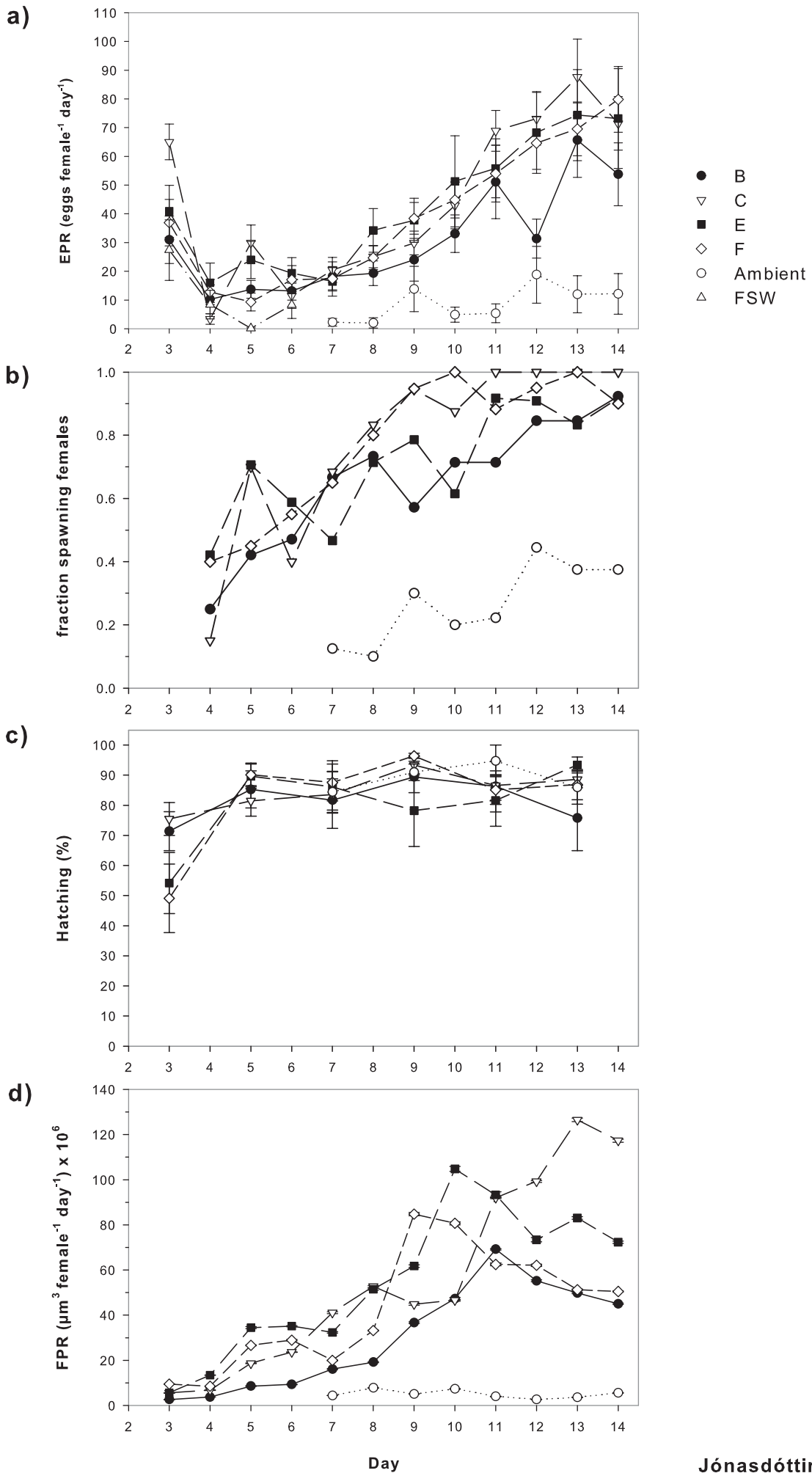
- Phaeocystis
- Dinoflagellates
- Ciliates
- Skeletonema



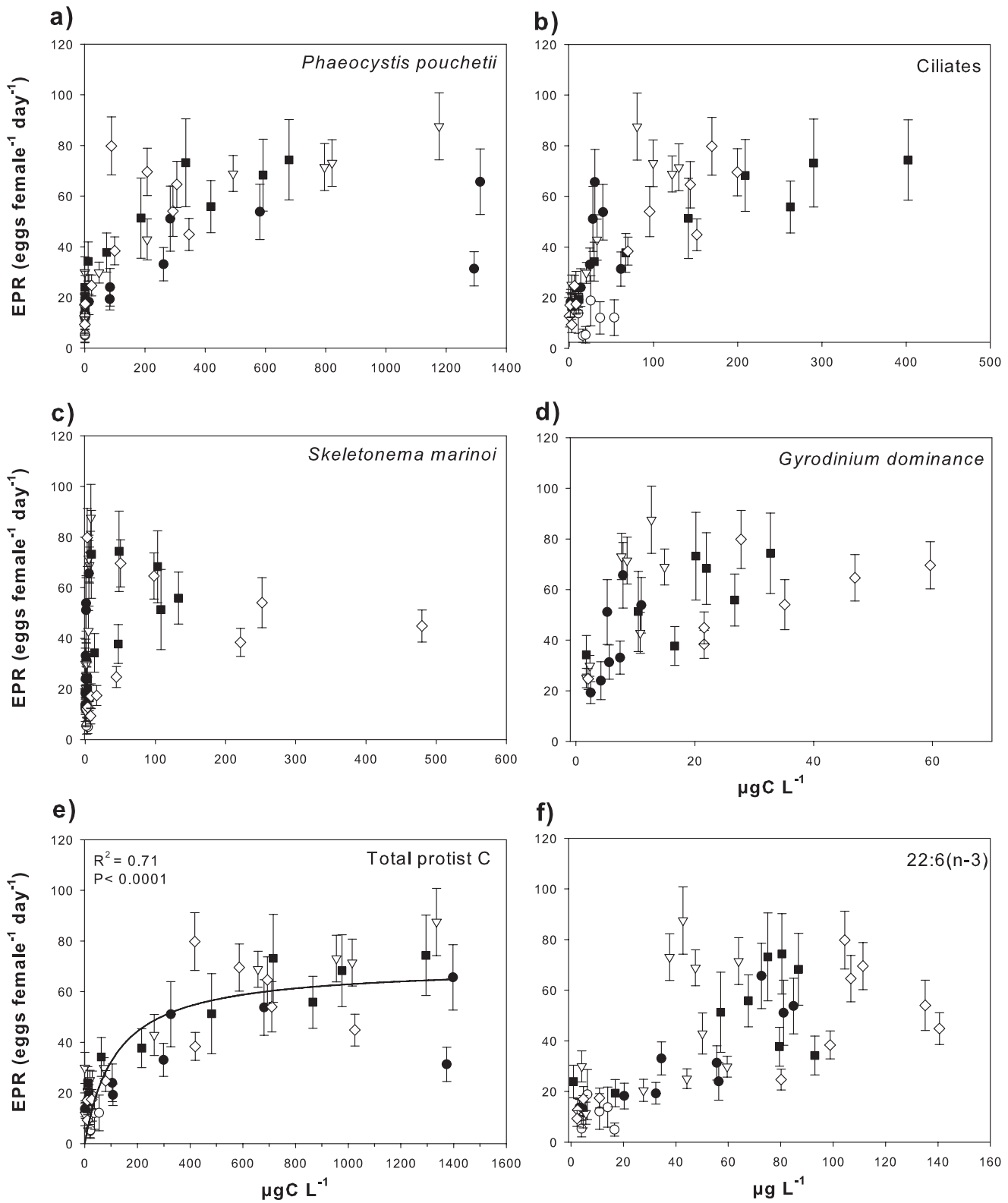


- B
- ▽ C
- E
- ◇ F
- Ambient

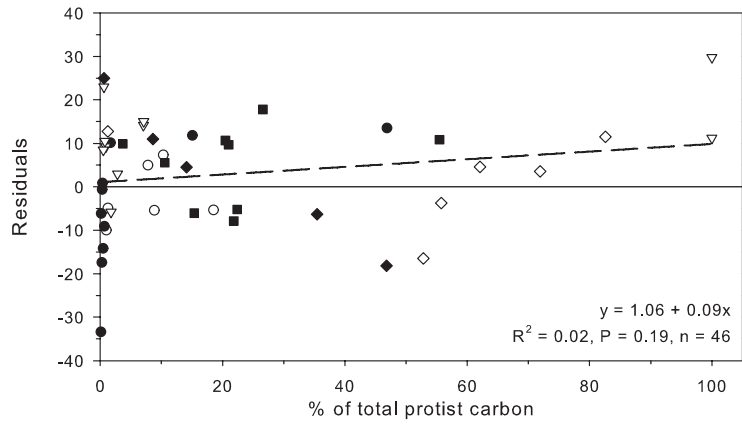
Jónasdóttir et al. Figure 3



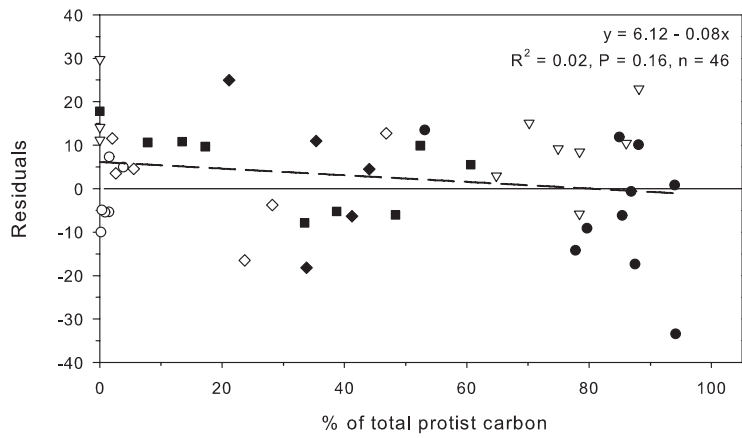
Jónasdóttir et al. Figure 4



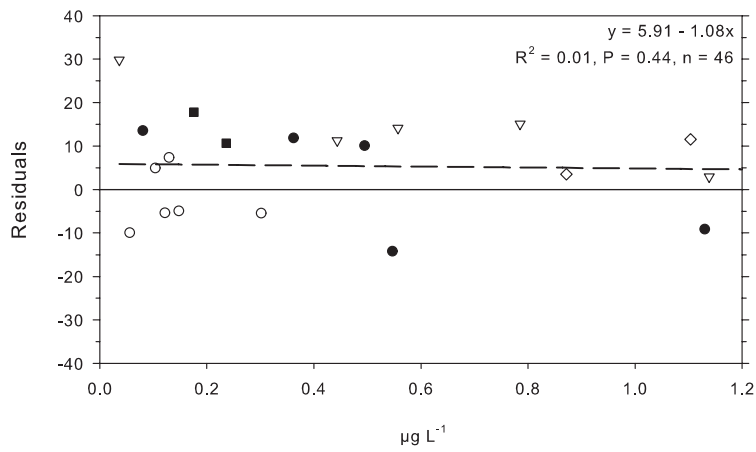
**A) *Skeletonema marinoi***



**B) *Phaeocystis pouchetii***



**C) Particulate PUA**



**D) Dissolved PUA**

