

Technical University of Denmark



Improving modeling of GOCE data using reduced point mass or multipole base functions

Herceg, Matija; Tscherning, Carl Christian; Knudsen, Per

Publication date:
2011

Document Version
Publisher's PDF, also known as Version of record

[Link back to DTU Orbit](#)

Citation (APA):
Herceg, M., Tscherning, C. C., & Knudsen, P. (2011). Improving modeling of GOCE data using reduced point mass or multipole base functions. Poster session presented at American Geophysical Union, San Francisco, California, USA, .

DTU Library
Technical Information Center of Denmark

General rights

Copyright and moral rights for the publications made accessible in the public portal are retained by the authors and/or other copyright owners and it is a condition of accessing publications that users recognise and abide by the legal requirements associated with these rights.

- Users may download and print one copy of any publication from the public portal for the purpose of private study or research.
- You may not further distribute the material or use it for any profit-making activity or commercial gain
- You may freely distribute the URL identifying the publication in the public portal

If you believe that this document breaches copyright please contact us providing details, and we will remove access to the work immediately and investigate your claim.

Improving modelling of GOCE data using reduced point mass or multipole base functions

Matija Herceg¹, Carl Christian Tscherning², Per Knudsen¹,

¹DTU Space, National Space Institute, Geodesy, Copenhagen, Denmark, ² NBI, Niels Bohr Institute, University of Copenhagen, Denmark

Poster ID G31A-0805

Abstract

Spherical harmonic are not the only harmonic functions which may be used when approximating the anomalous gravity field. One of a few other harmonic functions, which may be used as base functions when approximating anomalous gravity field, are point mass or multipole functions. In this study reduced point mass functions are used for the local modelling of GOCE data.

Point mass or multipole base functions may be expressed by closed expressions or as sums of Legendre series. In both cases at least the two first terms must be removed since they are not present in anomalous gravity field. Generally, for local applications the effect of a global gravity model is first removed (and later restored). For calculations discussed here contribution from EGM96 up to degree 36 has been subtracted. In order to improve modelling of gravity data, more terms, than just effect of a global gravity model, need to be removed. In this study for point-mass the terms up to the lowest degree of the reference potential (the global model) have been put equal to zero.

Reduced point masses

Linear combinations of point mass functions or mass multipoles have been used for the representation of the global (W) or regional anomalous gravity potential, T . For a point mass base function we have for an approximation to T :

$$\tilde{T} = \sum_{i=1}^l GM_i / l_i$$



Figure. 1

where G is the gravitational constant, M_i is the mass, l the number of point masses and l_i is the distance from the mass located at the point Q_i to the point of evaluation, P , see Fig. 1. The distance from the origin to P and Q_i is denoted r_P , r_{Q_i} , respectively and the first will always be larger than the other. The angle (spherical distance) between the vectors to P and Q_i is denoted ψ .

For the inverse distance we have:

$$\frac{1}{r_P} = \frac{1}{r_P} \sum_{i=0}^{\infty} \left(\frac{r_{Q_i}}{r_P}\right)^i P_i(\cos\psi)$$

where P_i are the Legendre polynomials.

Multipole-functions are derive from the inverse distance function by integration or differentiation. We intend to show that in order to make the functions suitable for regional gravity field modeling low-degree terms may be removed or substituted by appropriate weights. From equation for inverse distance, terms of degree zero and one, which are not present in T , are removed, simply by subtracting from the closed expressions the first two terms.

Multipole-functions are derive from the inverse distance function by integration or differentiation.

We intend to show that in order to make the functions suitable for regional gravity field modeling low-degree terms may be removed or substituted by appropriate weights.

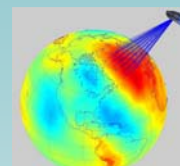


Figure. 2: Point mass method

Example of usage of reduced point masses

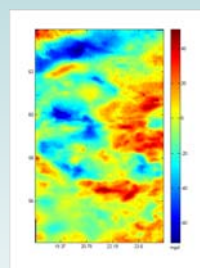


Figure. 4: Fenno-Scandia gravity data

In this study data from GOCE mission have been used. Data includes first two cycles of GOCE data (i.e. from end of October 2009. to mid February 2010.). Data distribution in the form of GOCE ground tracks, in this period and chosen region, is shown in Figure 3..

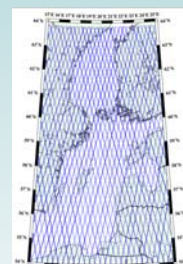


Figure. 3: GOCE ground tracks

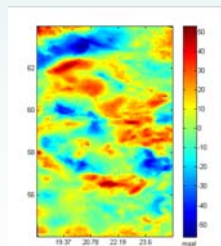


Figure. 5: Differences between gravity data and complete point mass functions

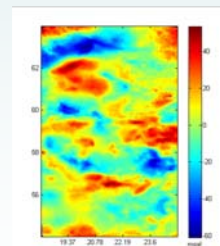


Figure. 5: Differences between gravity data and reduced point mass functions up to degree 36

Data used for comparison with reduced point masses from GOCE solution are gravity anomaly from Fenno-Scandia.

Figure 2 shows solution for reduced masses in selected area from just one GOCE observation

	Observations	Difference 0 deg	Difference 36 deg	Difference Full and Reduced point masses
Mean	-6.46	1.51	0.86	0.51
St. Dev	19.90	16.80	18.46	0.83

Table 1: Statistics of reduced point masses

Similar calculations have been successfully carried through using collocation (Gravsoft Geocoll). Statistic of the results and differences of reduced point masses can be seen in table 1.

Conclusion

In order to improve modeling of gravity data, more terms, than just effect of a global gravity model, need to be removed. Even better solution could be to substitute them by terms that uses small wavelength but also includes information representing the variances of the reference field that was removed. This assures that the model in an appropriate manner weights the regional frequencies with respect to the used global model.

In the future work with point mass or multipole functions it should be tried to use terms representing the power in the frequencies which the global model has not removed, corresponding to error-degree variances, and use them as the terms up to the lowest degree of the reference potential.

References

- Tscherning CC, Veicherts M and Herceg M.: Reduced point mass or multipole base functions. Contadakis ME, Katsikis C, Spatalas S, Tokmakidis K, Tzavos IN (eds), The Apple of the Knowledge, Honorary Volume to Emeritus Professor Demetrios Arabelos, Ziti Editions, pp. 282-289, ISBN: 978-960-245-674-5, 2010.
- Arabelos, D.: Untersuchungen zur gravimetrischen Geoidbestimmung, dargestellt am Testgebiet Griechenland. Wiss. Arb. d. Fachrichtung Vermessungswesen d. Universitaet Hannover, Hannover 1980. Ballani, L., J.Engel and E.Grafarend: Global base functions for the mass density in the interior of a massive body (Earth), Manuscripta Geodaetica, Vol. 18, no. 2, pp. 99-114, 1993.
- Ballani, L., J.Engel and E.Grafarend: Global base functions for the mass density in the interior of a massive body (Earth), Manuscripta Geodaetica, Vol. 18, no. 2, pp. 99-114, 1993.
- Hausck, H. and D.Lelgemann: Regional gravity field approximation with buried masses using least-norm collocation. Manuscripta Geodaetica, Vol. 10, no. 1, pp. 50-58, 1985.
- Heiskanen, W.A. and H. Moritz: Physical Geodesy, W.H. Freeman & Co, San Francisco, 1967
- Marchenko, A.N., F.Barthelmes, U.Meyer and P.Schwintzer: Regional geoid determination: An application to airborne gravity data in the Skagerrak. STR01/07, GFZ Potsdam, 2001.
- Tscherning, C.C. and R.H.Rapp: Closed Covariance Expressions for Gravity Anomalies, Geoid Undulations, and Deflections of the Vertical Implied by Anomaly Degree-Variance Models. Reports of the Department of Geodetic Science No. 208, The Ohio State University, Columbus, Ohio, 1974.
- Tscherning, C.C.: Representation of Covariance Functions Related to the Anomalous Potential of the Earth using Reproducing Kernels. The Danish Geodetic Institute Internal Report No. 3, 1972.
- Vermeer, M.: The use of mass point models for describing the Finnish gravity field. Proceedings, 9th Meeting Nordic Geodetic Commission, Sept, 1982, Gaevle, Sweden 1982.
- Vermeer, M.: Work on satellite gravity gradiometry using a buried masses grid representation. Study on Precise Gravity Field Determination Methods and mission requirements (Phase 2), FinalReport, Part 510B, pp. 1-18, ESA contract 8153/88/FL, 1990
- Vermeer, M.: FGI Studies on Satellite Gravity Gradiometry, 1.Experiments with a 5-degree buried masses representation, Report 89-3, Finnish Geodetic Institute, Helsinki, 1989.
- Wu, X.: Point-mass model of local gravity field. Acta Geod. et Cartog. Vol.13, 1984.