

Technical University of Denmark



## Temporal Photon Differentials

**Schjøth, Lars; Frisvad, Jeppe Revall; Erleben, Kenny; Sporning, Jon**

*Published in:*  
Proceedings of GRAPP 2010

*Publication date:*  
2010

*Document Version*  
Publisher's PDF, also known as Version of record

[Link back to DTU Orbit](#)

*Citation (APA):*  
Schjøth, L., Frisvad, J. R., Erleben, K., & Sporning, J. (2010). Temporal Photon Differentials. In Proceedings of GRAPP 2010: 5th International Conference on Computer Graphics Theory and Applications (pp. 54-61)

## DTU Library

Technical Information Center of Denmark

---

### General rights

Copyright and moral rights for the publications made accessible in the public portal are retained by the authors and/or other copyright owners and it is a condition of accessing publications that users recognise and abide by the legal requirements associated with these rights.

- Users may download and print one copy of any publication from the public portal for the purpose of private study or research.
- You may not further distribute the material or use it for any profit-making activity or commercial gain
- You may freely distribute the URL identifying the publication in the public portal

If you believe that this document breaches copyright please contact us providing details, and we will remove access to the work immediately and investigate your claim.

# TEMPORAL PHOTON DIFFERENTIALS

L. Schjøth

*eScience Center, Department of Computer Science, University of Copenhagen, Denmark, schj@diku.dk*

J. R. Frisvad

*Department of Informatics and Mathematical Modelling, Technical University of Denmark, Denmark, jrf@imm.dtu.dk*

K. Erleben

*eScience Center, Department of Computer Science, University of Copenhagen, Denmark, kenny@diku.dk*

J. Sporning

*eScience Center, Department of Computer Science, University of Copenhagen, Denmark, sporning@diku.dk*

**Keywords:** Photon mapping, ray differentials, first order structure.

**Abstract:** The finite frame rate also used in computer animated films is cause of adverse temporal aliasing effects. Most noticeable of these is a stroboscopic effect that is seen as intermittent movement of fast moving illumination. This effect can be mitigated using non-zero shutter times, effectively, constituting a temporal smoothing of rapidly changing illumination. In global illumination temporal smoothing can be achieved with distribution ray tracing (Cook et al., 1984). Unfortunately, this, and resembling methods, requires a high temporal resolution as samples has to be drawn from in-between frames. We present a novel method which is able to produce high quality temporal smoothing for indirect illumination without using in-between frames. Our method is based on ray differentials (Igehy, 1999) as it has been extended in (Sporring et al., 2009). Light rays are traced as bundles creating footprints, which are used to reconstruct indirect illumination. These footprints expand into the temporal domain such that light rays interacting with non-static scene elements draw a path reacting to the elements movement.

## 1 INTRODUCTION

Rendering animated scenes with global illumination methods produces some interesting problems, where the perhaps most prominent problem is aliasing caused by the fact that the temporal domain is discretized at a often very low resolution.

Feature films usually shot a frame rate around 25 *frames per second* (fps). Despite the fact that the human eye is much more perceptible than 25 fps, this frame rate still gives a seemingly fluid motion when a film is produced with a traditional movie camera. However, were we to produce a feature film of an animated virtual scene using an unmodified global illumination method at a frame rate of 25 fps, fluid motion is not guaranteed. A typical unmodified global illumination method produces images at instant time in the temporal domain. This procedure can induce temporal aliasing, which is seen as an adverse stroboscopic effect, where the illumination changes rapidly over time. A traditional-camera produced feature film will avoid this problem because the camera has non-zero exposure time. This means that camera-

perceived illumination is averaged over the exposure time. In effect, high frequency motion is blurred and therefore seems fluid. This effect is often called *motion blur*. A temporal aliasing defect not solved by this blurring is the wagon-wheel effect, which is seen as a backwards turning of the spokes of a wheel due to temporal under sampling. However, as our method does not address this particular problem, it will not be discussed further here.

A survey paper for global illumination and rendering solutions exploiting temporal coherence is given in (Tawara et al., 2004).

Brute force methods, such as the accumulation buffer (Haeberli and Akeley, 1990), average together in-between frames in order to achieve motion blur. These methods can achieve arbitrary high accuracy but are often prohibitively expensive as full renderings typically have to be made of a large number of in-between frames.

Different global illumination methods also address temporal aliasing by simulating motion blur. Distribution ray tracing (Cook et al., 1984) achieves motion blur by stochastically sampling the temporal

domain as well as the spatial. In (Myszkowski et al., 2001) the authors adaptively controlled the temporal and spatial sampling resolution by examining local variations of indirect illumination over time and space in a pilot estimate. In (Egan et al., 2009) motion blur is modeled as a wedge in the frequency domain. Ray tracing methods using ray differentials have been studied in (Igehy, 1999; Christensen et al., 2003; Durand et al., 2005; Gjøøl et al., 2008).

With *time dependent photon mapping* (Camarano and Jensen, 2002), photon mapping was extended such that indirect illumination was estimated using a four dimensional photon map that expanded into the temporal domain. In this manner photons were filtered not only based on their spatial position but also their temporal.

A problem common to the discussed methods is that they all rely on information from in-between frames in order to achieve motion blur. Having this information available places certain restrictions on the animated scene; because a scene description is needed at arbitrary time steps, movement of scene elements either needs to be described as a an analytic function, or movement has to be interpolated between frames. The analytical approach is by far the best but demands a certain complexity of the animation application, as well as a tight link to the rendering software. The interpolative approach is error prone, since the animation curve might not be linear. Furthermore, some accelerator for ray-object intersection (such as a bsp-tree) typically needs to be either rebuild, or at least updated an extra number of times equal to the number in-between frames needed.

In this paper, we propose a method that produces motion blur, and which neither needs in-between frames, nor to over-smooth indirect illumination with high temporal frequency. Our proposed method is an extension of photon differentials (Schjøth et al., 2007). It takes advantage of ray differentials (Igehy, 1999) and their extension into the temporal domain (Sporring et al., 2009), and since velocity is a relative concept, our methods handles camera as well as object motion. We call this method *temporal photon differentials*.

## 2 TEMPORAL PHOTON DIFFERENTIALS

In our method each photon represents a beam of light that expands, contracts and reshapes in space and time as it propagates through the scene. We keep track of a photon’s coherence by deriving the first order structure of its direction and position with respect to both

time and space as it traverse the scene.

Representing a photon as a parameterized ray with origin in  $\mathbf{x}$  and the direction  $\boldsymbol{\omega}$ , we describe the derivatives of a photon with two Jacobian matrices; one for the positional derivatives and one for the directional derivatives. The positional derivatives are then given by

$$D\mathbf{x} = \begin{bmatrix} \frac{\partial x}{\partial u} & \frac{\partial x}{\partial v} & \frac{\partial x}{\partial t} \\ \frac{\partial y}{\partial u} & \frac{\partial y}{\partial v} & \frac{\partial y}{\partial t} \\ \frac{\partial z}{\partial u} & \frac{\partial z}{\partial v} & \frac{\partial z}{\partial t} \end{bmatrix} = [D_u\mathbf{x} \quad D_v\mathbf{x} \quad D_t\mathbf{x}], \quad (1)$$

where  $D\mathbf{x}$  is the Jacobian of the positional derivatives, and  $D_u\mathbf{x}$ ,  $D_v\mathbf{x}$  and  $D_t\mathbf{x}$  are column vectors that describe the positional derivatives with respect to the scalar variables  $u$ ,  $v$ , and  $t$ . The spatial variables  $u$  and  $v$  relate to light sources, from which the photon differential was emitted.

We write the directional derivatives of the photon as

$$D\boldsymbol{\omega} = [D_u\boldsymbol{\omega} \quad D_v\boldsymbol{\omega} \quad D_t\boldsymbol{\omega}]. \quad (2)$$

Exactly, as with photon differentials,  $D_u\boldsymbol{\omega}$ ,  $D_v\boldsymbol{\omega}$ ,  $D_u\mathbf{x}$  and  $D_v\mathbf{x}$  are spatially dependent differential vectors. The directional and positional differential vectors with respect to time are new to photon differentials; they are noted as  $D_t\boldsymbol{\omega}$  and  $D_t\mathbf{x}$  in the above equations. For a scene, in which the light sources are static, the time dependent differential vectors will, initially, be zero. If the scene, additionally, is completely static, they will remain zero-vectors throughout the photon’s traversal of the scene. In this specific case, our method will behave exactly as ordinary photon differentials: the photons will expand and contract depending on the reflections and refraction encountered during tracing, and their spatial dependent positional differential vectors will form a footprint, which is used in the reconstruction of the indirect illumination.

On the other hand, if we have a dynamic scene, then photon differentials interacting with a non-static scene element will attain non-zero time dependent differential vectors. In this case, the derivatives of a dynamic scene-element’s surface positions or normals with respect to time will be non-zero:

$$D_t\mathbf{n} \neq \mathbf{0}, \quad (3)$$

or

$$D_t\mathbf{q} \neq \mathbf{0}, \quad (4)$$

where  $\mathbf{n}$  is a surface normal to the element and  $\mathbf{q}$  is a position on the element’s surface. This again will affect the time dependent derivatives of a photon interacting with the scene element.

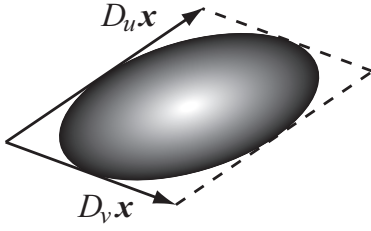


Figure 1: Spatial filter kernel shaped by the positional differential vectors,  $D_u \mathbf{x}$  and  $D_v \mathbf{x}$ .

Sporring *et al.* evaluates the full differentials for a parameterized ray. This allows for an extension of parameters such that the derivatives of a ray can be considered with respect to time. From Sporring *et al.*'s equations for transfer, reflection and refraction, we observe that non-zero time-dependent element differentials (eg.  $D_t \mathbf{q}$ ) propagate through these interactions to the differentials of the interacting photon. We exploit this behavior such that a footprint from a photon differential traveling in a dynamic scene not only describes the spatial coherence of the ray but also the temporal coherence of the ray.

When a photon differential hits a surface, its positional differential vectors are projected onto the surface's tangent plane at the intersection point. The spatial footprint of the photon differential is the area on the tangent plane of a parallelogram spanned by the positional differential vectors. The spatial footprint can be used to shape an anisotropic filter kernel as illustrated in Figure 1.

The time dependent positional differential vector,  $D_t \mathbf{x}$ , tells us either how the photon's footprint is going to behave over consecutive frames, or how the footprint has behaved in former frames. In the former case, the direction of  $D_t \mathbf{x}$  predicts the direction on the surface that the footprint will move, and the magnitude of the vector predicts how far the footprint is likely to move. Basically, the magnitude and the direction of  $D_t \mathbf{x}$  depends on the estimation method used to calculate the time derivatives of an element, which again depends on the geometry representation. In the present method, we simply use finite differences and triangle meshes. Except for the last frame, in which we use backward differences, we estimate the time dependent differentials using forward differences. When we want to predict how a footprint is going to behave, having intersected a moving element, we estimate the element's positional time derivatives by

$$D_t \mathbf{q}_f = e(\mathbf{q}_{f+1} - \mathbf{q}_f), \quad (5)$$

where  $D_t \mathbf{q}_f$  is the derivative of the vertex  $\mathbf{q}_f$  with re-

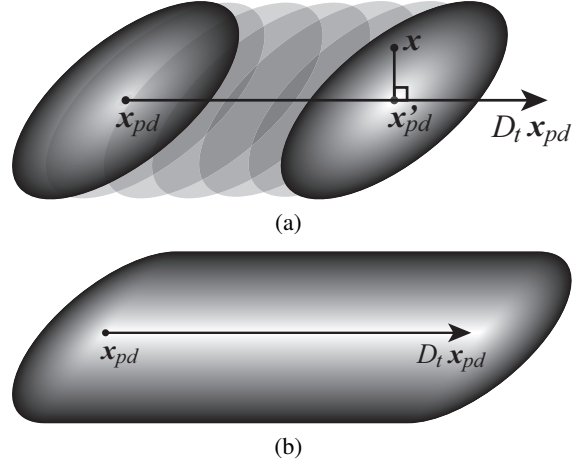


Figure 2: Temporal filter kernel shaped by a spatial kernels translation along the time dependent differential vector.

spect to time at frame step  $f$ , and  $e$  is the exposure. The exposure is a parameter for how much we trust our prediction. Generally, it works as a smoothing parameter for the time dependent footprint that decides how much motion blur we induce. Its unit is given in frames as it depends on the movement of the scene elements between frames. The exposure is related to the exposure time by the frame rate such that the exposure time is equal to the exposure divided by the frame rate.

The time dependent footprint constitutes an integration of the spatial footprint over the time dependent differential vector such that the spatial footprint is elongated along the vector. We achieve this by translating the spatial footprint along the time dependent differential vector. As in the spatial case, the time dependent footprint describes a filter kernel. In Figure 2(a),  $D_t \mathbf{x}_{pd}$  is the time dependent differential vector,  $\mathbf{x}_{pd}$  is the center of the spatial kernel, and  $\mathbf{x}$  is the estimation point, for which the kernel weight is estimated.

The kernel is translated along  $D_t \mathbf{x}_{pd}$  to the point,  $\mathbf{x}'_{pd}$ , on the line segment,  $(\mathbf{x}_{pd} \rightarrow \mathbf{x}_{pd} + D_t \mathbf{x}_{pd})$ , where  $\mathbf{x}'_{pd}$  is the point on the segment having the shortest distance to the estimation point,  $\mathbf{x}$ . Using  $\mathbf{x}'_{pd}$  as center for the spatial kernel, the resulting time dependent kernel will achieve an elongated shape as illustrated in Figure 2(b).

The irradiance of the time dependent photon differential is estimated as

$$E_{pd} = \Phi_{pd} / A_{pd}, \quad (6)$$

where  $\Phi_{pd}$  is the radiant flux carried by the photon, and  $A_{pd}$  is the surface area, to which the radiant flux

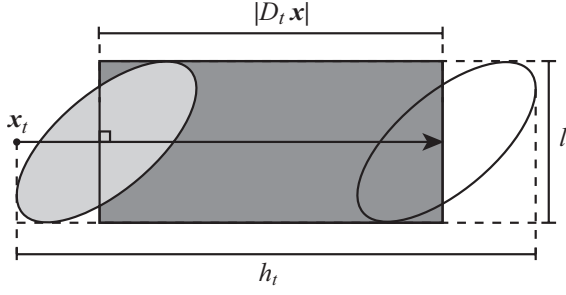


Figure 3: First order approximation of the sweeping area of the kernel on the surface of an object induced by relative motion of the light source and the object. The approximate area swept is the sum of the area of the kernel and the rectangle spanned by  $D_t \mathbf{x}$  and  $l$ , where  $\mathbf{x}_t$  is the initial central point of projection,  $D_t \mathbf{x}$  is the vector of change of  $\mathbf{x}_t$  by time, and  $l$  is the spread of the kernel in the direction perpendicular to  $D_t \mathbf{x}$ .

is incident. For the time dependent photon differential, this area is the area of the time dependent kernel. Referring to Figure 3 this area is calculated as

$$A_{pd} = \frac{1}{4} \pi |D_u \mathbf{x} \times D_v \mathbf{x}| + l |D_t \mathbf{x}|, \quad (7)$$

where the first term is the area of the spatial kernel and the second term is the area of a rectangle. One side of the rectangle is the length of the time dependent differential vector and the other is the length of the spatial kernel in a direction perpendicular to the time dependent differential vector.

Having defined the time dependent kernel as well as the irradiance of the photon differential, we can now formulate a radiance estimate for temporal photon differentials.

## 2.1 THE TEMPORAL RADIANCE ESTIMATE

Reflected radiance from temporal photon differentials can be estimated by

$$\hat{L}_r(\mathbf{x}, \boldsymbol{\omega}) = \sum_{pd=1}^n f_r(\mathbf{x}, \boldsymbol{\omega}_{pd}, \boldsymbol{\omega}) E_{pd}(\mathbf{x}, \boldsymbol{\omega}_{pd}) K_s((\mathbf{x} - \mathbf{x}'_{pd})^T \mathbf{M}_{pd}^T \mathbf{M}_{pd} (\mathbf{x} - \mathbf{x}'_{pd})), \quad (8)$$

where  $\mathbf{x}$  is a position on an illuminated surface,  $\boldsymbol{\omega}$  is reflection direction considered,  $f_r$  is the bi-directional reflectance function,  $\boldsymbol{\omega}_{pd}$  is the incident ray direction,  $\mathbf{x}'_{pd}$  is the translated center of spatial kernel,  $E_{pd}$  is the irradiance of the temporal photon differential,  $K_s$  is a bivariate kernel function from Table 1, and  $\mathbf{M}_{pd}$  is a matrix that transforms from world coordinates to

Table 1: Symmetric bivariate kernel functions

Kernel	$K_s(y)$	
Uniform	1	if $y < 1$ ,
	0	otherwise
Epanechnikov	$2(1-y)$	if $y < 1$ ,
	0	otherwise
Biweight	$3(1-y)^2$	if $y < 1$ ,
	0	otherwise
Gaussian	$\frac{1}{2} \exp(-\frac{1}{2}y)$	

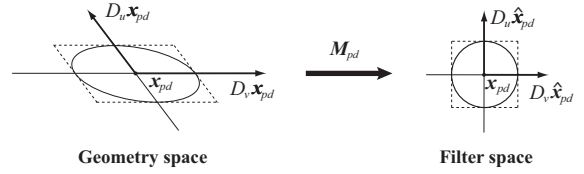


Figure 4: Transformation from geometry space to filter space by the matrix  $\mathbf{M}_{pd}$ . The ellipse inside the parallelogram is the footprint of the photon differential. When transformed into filter space the ellipse becomes a unit circle.

the filter space of the spatial kernel, as illustrated in Figure 4.

The temporal radiance estimate can be extended as to include filtering in time. One intuitive approach is to weight the part of the differential, which is closest in time the highest, where the time is estimated from the photon hit point. This can be achieved using a simple univariate kernel as those presented in Table 2. To the kernel, we input a distance along the time dependent differential vector,  $D_t \mathbf{x}_{pd}$ , relative to furthest point of the kernel along negative  $D_t \mathbf{x}_{pd}$ . This is illustrated in Figure 3.

With time filtering the temporal radiance estimate is formulated as

$$\hat{L}_r(\mathbf{x}, \boldsymbol{\omega}) = \sum_{pd=1}^n f_r(\mathbf{x}, \boldsymbol{\omega}_{pd}, \boldsymbol{\omega}) E_{pd}(\mathbf{x}, \boldsymbol{\omega}_{pd}) K_s((\mathbf{x} - \mathbf{x}'_{pd})^T \mathbf{M}_{pd}^T \mathbf{M}_{pd} (\mathbf{x} - \mathbf{x}'_{pd})) K_t\left(\frac{(\mathbf{x}_t - \mathbf{x}'_{pd})^T (\mathbf{x}_t - \mathbf{x}'_{pd})}{h_t^2}\right), \quad (9)$$

where  $K_s$  is a bivariate kernel function (See Table 1),  $K_t$  is a univariate kernel function,  $h_t$  is the length of the temporal kernel along  $D_t \mathbf{x}_{pd}$ , and  $\mathbf{x}_t$  is the furthest point of the kernel in the direction  $-D_t \mathbf{x}_{pd}$ . With the formulation of the temporal radiance estimate, we now have a method, which reconstructs indirect illumination based on a virtual scenes dynamics. This allows for motion blur. In the following we will make a simple analysis of the method.

Table 2: Univariate kernel functions

Kernel	$K_I(y)$	
Uniform	$\frac{1}{2}$ 0	if $y < 1$ , otherwise
Epanechnikov	$\frac{3}{4}(1-y)$ 0	if $y < 1$ , otherwise
Biweight	$\frac{15}{16}(1-y)^2$ 0	if $y < 1$ , otherwise
Gaussian	$\frac{1}{\sqrt{2\pi}} \exp(-\frac{1}{2}y)$	

### 3 RESULTS

We first test our proposed method using a case study. The case study is a simple animated scene, in which a sinusoidal wave moves horizontally in a direction perpendicular to the wave crests. The wave is illuminated from above by collimated light, which it refracts such that the light form caustics on a plane beneath the wave. A virtual camera is placed such that the caustics are clearly visible.

We have rendered the scene using temporal photon differentials, and Cammarano and Jensen’s time dependent photon mapping. The images in Figure 5 are renderings of the same frame but at different exposures,  $e$ . They were rendered using temporal photon differentials and a photon map containing only 1000 photons. From the images we notice that the temporal photon differentials assume the expected behavior. As the exposure increases the caustics are blurred acquiring a comets tail away from the direction of movement. This is the behavior chosen at implementation time. We could just as well have placed the time dependent kernel centered over the photon intersection point and likewise have centered the time filtering or we could just have centered the filtering. As it is, the time differential is ‘trailing’ after the photon both in respect to placement and filtering. As we shall see, though it is hardly visible, the same strategy has been implemented for time dependent photon mapping.

The renderings in Figure 6 have all except (a) been created with time dependent photon mapping. Additionally, all images were rendered using the same exposure,  $e = 1.0$  frame. Figure 6(a) has been included for comparison, it was rendered using temporal photon differentials and is a copy of the image in Figure 5 with an exposure 1.0 frame. First of all, what we see from image 6(b) is that the bias versus variance trade-off provided by time dependent photon mapping is too poor to produce palpable caustics. For this reason a much higher number photons have been used to render the images in the three rightmost columns. Of these, the top row is based on a photon map con-

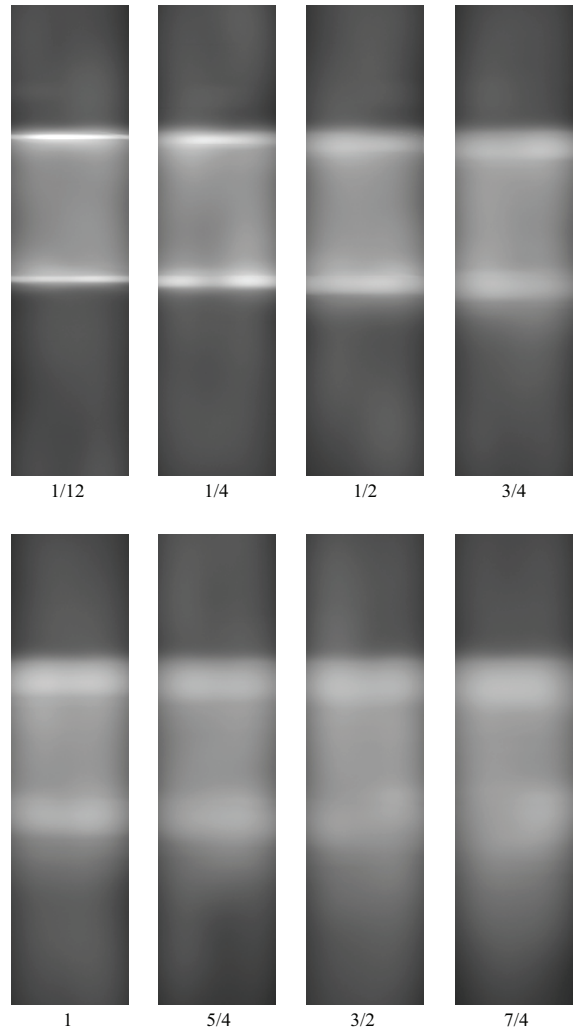


Figure 5: Renderings of the case study scene using temporal photon differentials. The number under the renderings indicate exposure,  $e$ . All images are rendered at the same frame step using a photon map containing 1 000 photons.

taining as much as 480 000 photons while the bottom row is based on a photon map contain 40 000 photons. From left to right the temporal resolution increases from 0 to 2 to 10 in-between frames. The spatial bandwidth for the renderings was chosen as to decrease noise to an acceptable level. This leads to the perhaps most important observation, namely that a low temporal resolution produces visible bands that can only be removed by filtering beyond what removes normal noise. This complicates matter, as an increase of photons no longer is a guarantee for high quality illumination.

Photon differentials are free of this concern as the blurring is based on the first order derivatives of object

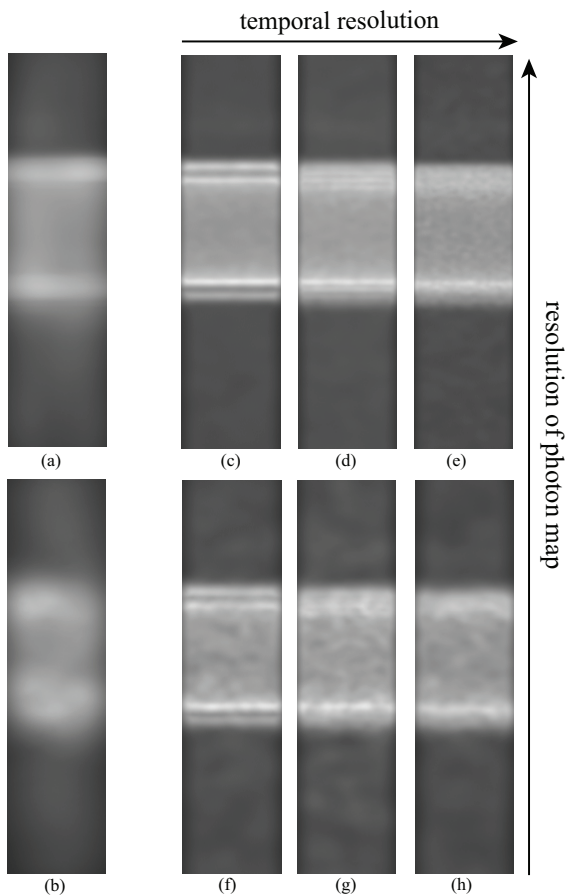


Figure 6: Comparing temporal photon differentials with time dependent photon differentials. Rendering in (a) shows temporal photon differentials using 1000 photons, (b) shows time dependent photon differentials using 1000 photons, (c)-(e) shows time dependent photon differentials using 480000 photons with 0, 2, and 10 in-between frames respectively, and (f)-(g) shows time dependent photon differentials using 40000 photons with 0, 2, and 10 in-between frames respectively. The exposure for all images is 1.0 frame.

movement and not on finite animation steps. In the implementation presented here one additional frame is needed in order to estimate the derivatives.

The images in Figure 7 present a more complex—all though very artificial—scene, in which a cylinder is rotating counterclockwise around its one end. This rotation means that the speed of the cylinder will increase as we move from the turning point down the length of the cylinder. As a result the produced caustic becomes more blurred from the high-speed end of the cylinder. Figure 7(a) gives the solution provided by temporal photon differentials while the images in Figure 7(b) and 7(c) were produced with

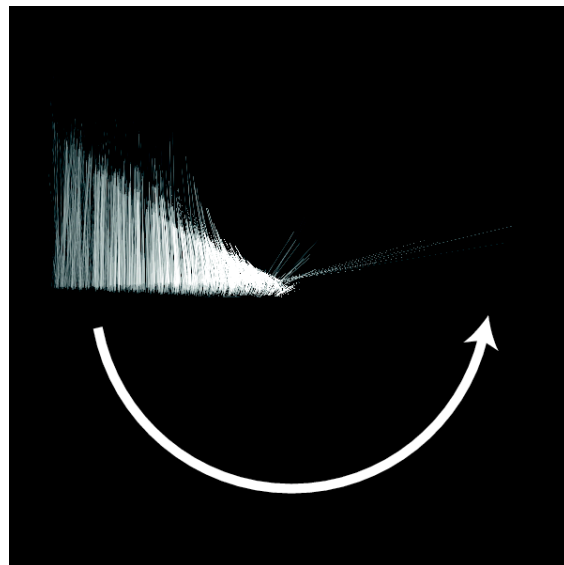


Figure 8: Projected time differentials from a rotating glass cylinder.

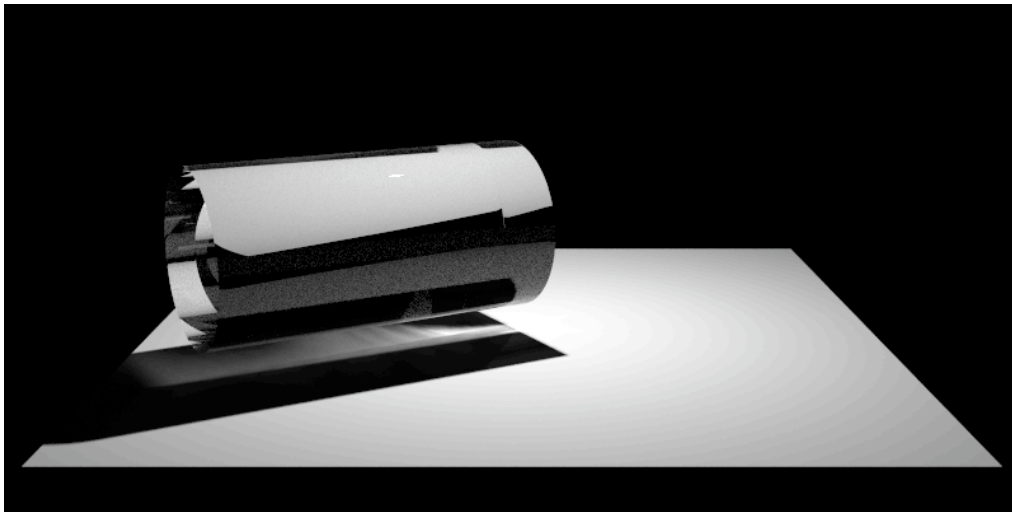
time dependent photon mapping. All images were rendered with the same number of photons contained in the photon map. However, the two latter images were rendered with different bandwidths. From these two images we see that at this obviously low temporal resolution an increase in bandwidth can help remove the temporal bands that time dependent photon mapping is prone to. The price, however, is an unwanted blurring of the front of the caustic.

Finally, Figure 8 solely depicts the photons' time differentials as they are projected down on the plane beneath the cylinder. A high exposure time has been used as to facilitate the illustration. The image confirms that the time differential vectors become longer when refracted from the high-speed end of the cylinder, thus elongating the time dependent kernel used in the temporal radiance estimate.

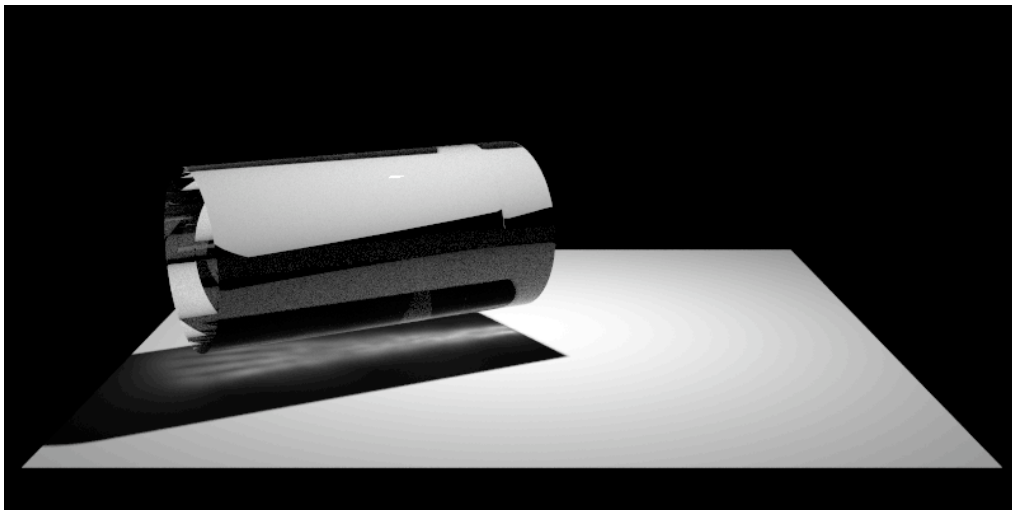
## 4 CONCLUSION

In this paper we have presented *temporal photon differentials* – a global illumination method for rendering animated scenes. *Temporal photon differentials* elegantly handles time filtering such that frames can be rendered on a one to one basis. Since velocity is a relative concept, our method handles camera as well as object motion, further in contrast to similar dynamic scene renderers, *temporal photon differentials* does not need in-between frames in order to avoid temporal aliasing. Finally, *temporal photon dif-*

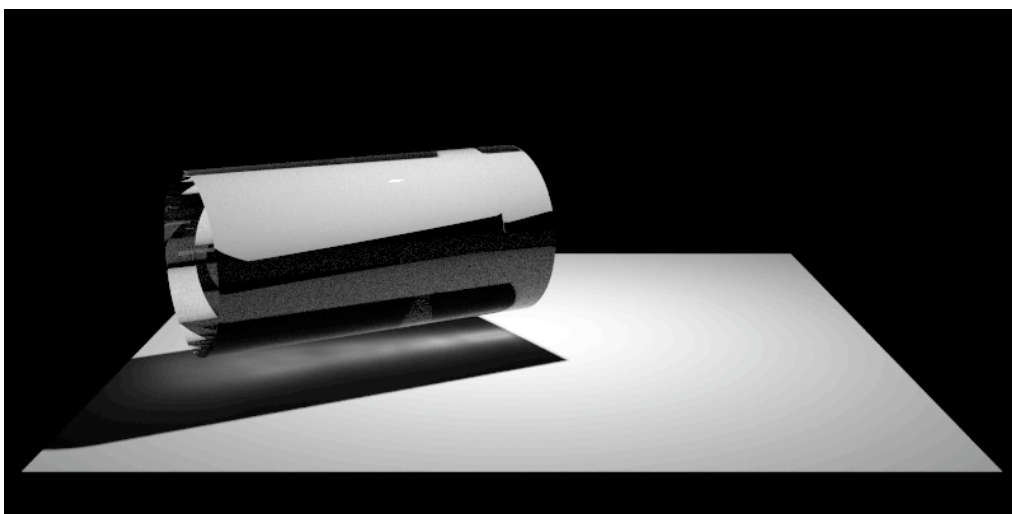




(a)



(b)



(c)

Figure 7: Rendering of a rotating cylinder. All images were rendered with an exposure of 1.0 frames, using a photon map containing 5000 photons. Figure 7(a) was rendered using temporal photon differentials. Figure 7(b) and 7(c) were rendered using time dependent photon mapping, the former using 100 photons per radiance estimate and the latter using 250 photons in the radiance estimate.



*ferentials* includes photon differential's ability to efficiently and sharply model caustics in still frames, and it further improves the computational efficiency for animations by reusing photons from earlier frames through the first order spatial-temporal model of photon incidence.

## REFERENCES

- Cammarano, M. and Jensen, H. W. (2002). Time dependent photon mapping. In *EGRW '02: Proceedings of the 13th Eurographics workshop on Rendering*, pages 135–144, Aire-la-Ville, Switzerland, Switzerland. Eurographics Association.
- Christensen, P. H., Laur, D. M., Fong, J., Wooten, W. L., and Batali, D. (2003). Ray differentials and multiresolution geometry caching for distribution ray tracing in complex scenes. In *Proceedings of Eurographics 2003*, Computer Graphics Forum, pages 543–552. Blackwell Publishing Inc.
- Cook, R. L., Porter, T., and Carpenter, L. (1984). Distributed ray tracing. *SIGGRAPH Comput. Graphics*, 18(3):137–145.
- Durand, F., Holzschuch, N., Soler, C., Chan, E., and Sillion, F. X. (2005). A frequency analysis of light transport. In Marks, J., editor, *ACM SIGGRAPH 2005*, pages 1115–1126.
- Egan, K., Tseng, Y.-T., Holzschuch, N., Durand, F., and Ramamoorthi, R. (2009). Frequency Analysis and Sheared Reconstruction for Rendering Motion Blur. *SIGGRAPH (ACM Transactions on Graphics)*, 28(3):93:1–93:13.
- Gjøøl, M., Larsen, B. D., and Christensen, N.-J. (2008). Final gathering using ray differentials. In *Proceedings of WSCG 2008*, pages 41–46.
- Haeberli, P. and Akeley, K. (1990). The accumulation buffer: hardware support for high-quality rendering. In *SIGGRAPH '90: Proceedings of the 17th annual conference on Computer graphics and interactive techniques*, pages 309–318, New York, NY, USA. ACM.
- Igehy, H. (1999). Tracing ray differential. In Rockwood, A., editor, *Siggraph 1999, Computer Graphics Proceedings*, pages 179–186, Los Angeles. Addison Wesley Longman.
- Myszkowski, K., Tawara, T., Akamine, H., and Seidel, H.-P. (2001). Perception-guided global illumination solution for animation rendering. In *SIGGRAPH '01: Proceedings of the 28th annual conference on Computer graphics and interactive techniques*, pages 221–230, New York, NY, USA. ACM.
- Schjøth, L., Frisvad, J. R., Erleben, K., and Sporring, J. (2007). Photon differentials. In *GRAPHITE '07: Proceedings of the 5th international conference on Computer graphics and interactive techniques in Australia and Southeast Asia*, pages 179–186, New York, NY, USA. ACM.
- Sporring, J., Schjøth, L., and Erleben, K. (2009). Spatial and Temporal Ray Differentials. Technical Report 09/04, Institute of Computer Science, University of Copenhagen, Copenhagen, Denmark. ISSN: 0107-8283.
- Tawara, T., Myszkowski, K., Dmitriev, K., Havran, V., Damez, C., and Seidel, H.-P. (2004). Exploiting temporal coherence in global illumination. In *SCCG '04: Proceedings of the 20th spring conference on Computer graphics*, pages 23–33, New York, NY, USA. ACM.