



Annual Report 2009

Stang, Henrik; Hededal, Ole; Schytz, Sara Gottlieb; Christensen, Iben Vernegren; Hertz, Kristian Dahl; Fritt-Rasmussen, Janne; Rode, Carsten; Koss, Holger; Clausen, Geo; Christensen, Hans Peter; Villumsen, Arne; Nielsen, Jens Henrik; Krogsbøll, Anette; Geiker, Mette Rica; Møller, Per; Küter, André; Furbo, Simon; Goltermann, Per ; Welin, Charlotte

Publication date:
2010

Document Version
Publisher's PDF, also known as Version of record

[Link back to DTU Orbit](#)

Citation (APA):
Stang, H., Hededal, O., Gottlieb, S. W. J., Christensen, I. V., Hertz, K. D., Fritt-Rasmussen, J., ... Welin, C. (Ed.) (2010). Annual Report 2009.

DTU Library

Technical Information Center of Denmark

General rights

Copyright and moral rights for the publications made accessible in the public portal are retained by the authors and/or other copyright owners and it is a condition of accessing publications that users recognise and abide by the legal requirements associated with these rights.

- Users may download and print one copy of any publication from the public portal for the purpose of private study or research.
- You may not further distribute the material or use it for any profit-making activity or commercial gain
- You may freely distribute the URL identifying the publication in the public portal

If you believe that this document breaches copyright please contact us providing details, and we will remove access to the work immediately and investigate your claim.

Department of Civil Engineering Annual Report 2009



DTU Civil Engineering
Annual Report 2009

Editor:

Charlotte Welin

Layout:

Helle A. Meulengrath

Photos and Illustrations

Simon Klein Knudsen/MAKWERK

Mikkel Adsbøl

Erik Irgens Johnsen

Ove Holst

Inger Bojesen-Kofoed

Henning Larsen Architects

Kristian Hertz

Janne Fritt-Rasmussen

Fartato Olsen

Architect tnt-nuuk a/s

Femern A/S

Andreas Castberg

Holger Koss

Miriam Ann Hellmann

Victor August Aalund-Olsen

COWI A/S

Carsten Andersen/Dansk Naturvidenskabsfestival

Jens Henrik Nielsen

Janne Fritt-Rasmussen

Jan O. Nielsen

Jacob W. Schmidt

Jianhua Fan

Printed in Denmark by Schultz Grafisk, Albertslund
ISBN: 978-87-87336-03-1

DTU Civil Engineering
Technical University of Denmark
Brovej, Building 118
DK-2800 Kgs. Lyngby

Phone: +45 4525 1700

Fax: +45 4588 3282

byg@dtu.dk
www.byg.dtu.dk

Front Picture: Laboratory Technician Louise Schmidt Ryhding

Contents

From the Head of Department	04
Organisation	06
A partnership with great mutual benefits	07
Using electrochemistry for saving archeological wood	08
The next generation of building structures is born	10
Arctic Oil Spills fought with fire	12
New Professor in Building Physics	14
Research on human life quality in cities	15
DTU takes the temperature of indoor air in schools	16
The Arctic Engineering Education - a success story	18
"PhD of the year at DTU Byg" Tempered glass for structural use	20
Focus on engineering competences	22
Tailoring the concrete-steel system for improved corrosion resistance	23
Development and life time of solar collectors	24
Patents and teaching at DTU	26
Publications	28
Journal papers, ISI-indexed	28
Journal papers, peer reviewed	29
Books	30
Book chapters	30
Conference papers, peer reviewed	31
Reports	35
PhD theses	36
MSc theses	36
BEng theses	38
BSc theses	41
Staff, education, research, finance	42
Donations	43



Management Report 2009

Civil engineering, the challenge of sustainability

DTU Civil Engineering is a university department within the building and construction sector.

Our mission is research, education, innovation, and public sector consultancy. Through our work we contribute to the generation of social and commercial value.

Our vision is to become a leading European civil and architectural engineering department and a preferred partner for companies, authorities and institutions in the building and construction sector.

It is with great pleasure that I present the annual report 2009 for the Department of Civil Engineering at the Technical University of Denmark – DTU Byg. Indeed, I am not in a position to take credit for the leadership behind the impressive results from DTU Byg in 2009. However, I am proud of having contributed to and being part of the organization and it is my pleasure to introduce you to the annual report for 2009.

A university department is a very diverse and complex institution, and this holds true in particular for a department in a technical university, bearing in mind that activities range from maintaining knowledge in classical fields and fundamental research in promising areas of technical science to participating in innovation and developing cutting-edge emerging technologies. Further, activities take the form of teaching, basic research, innovation and interaction with industry as well as public sector consultancy. A common denominator for all these activities is that they aim at scientific progress in the service of society through the application of technology.

‘Service of society’ clearly is a broad term, which will be defined differently in different ages. At present, and I am sure also in the future, the concept of sustainability plays a major role in defining ‘service of society’. Simply mentioning concepts like the global depletion of resources, the climate change challenge and the threat from global pollution should make us all think and act. Clearly, a huge responsibility rests on present and future generations of engineers to provide the scientific and technological basis for meeting

these huge challenges. In particular, civil engineers will play a central role in this: e.g. making sure that energy consumption in buildings is reduced from the current massive level, that new infrastructure is sustainable with minimized energy and material consumption and that the huge investments made in new infrastructure are long-lasting, just to mention a few of the important issues facing modern civil engineers. The activities at DTU Byg clearly reflect such efforts.

In this year’s report you can read about ongoing, exciting research into solar energy collectors for sustainable housing and their development, and you can read about the visions of our new Professor Carsten Rode in building physics – the scientific field necessary to ensure our understanding of the complex physical processes taking place in a building, an understanding which is essential when introducing new, highly insulated and energy efficient living and working spaces. What happens when the indoor climate in buildings – in this particular case schools – is neglected and not properly considered in building design and operation is described in an article about a study of the indoor climate of our public schools in Denmark.

Our work in protecting the huge investments in a durable and safe infrastructure is exemplified in two articles: one describing DTU Byg’s commitment and participation as independent advisors in the Femern A/S Geotechnical Expert Group and another which describes cutting-edge, important research into improved corrosion resistance of steel in reinforced concrete structures – rein-



forcement corrosion being one of the most important deterioration mechanisms in our civil infrastructure and which thus plays a major role in the expected service life of reinforced concrete structures. It is very rare that completely new building construction concepts are developed, patent protected and commercialized. Therefore I encourage you to read the exciting article about the new 'Super Light' construction system, which will reduce energy and material consumption during construction considerably, while at the same time releasing new architectural potential.

Clearly, it is not enough to understand and develop technologies, we also need to understand how technologies potentially influence the environment and how the environment and the (changing) climate influence our buildings and infrastructure. Wind engineering is an important part of this picture, and you can read about our new, strategic efforts in this field exemplified through investigations of urban space quality. Mitigation technologies need to be in place when accidents happen with potentially severe consequences for our ecosystems. There is increased focus on oil extraction in the Arctic regions and an interesting article describes our work in developing and assessing technologies for fighting oil spills in this sensitive environment.

Since we are living in an aging society with an aging infrastructure, conservation and repair is of growing concern, and it is necessary to develop new and environmentally friendly technologies to meet new challenges. Researchers at DTU Byg have employed electro-chemical methods in the development of a new conserva-

tion method for archaeological wooden objects. All our activities are interlinked with education directly or indirectly. A large amount of resources are spent not only on basic teaching but also on activities that maintain our study programmes at the highest level and ensure a close relationship between our research and our teaching. These activities are described in three articles dealing with investigations into the quality and relevance of our study programmes, how educational activities can produce innovation and how innovation can be incorporated into education and, finally, our successful efforts in establishing an Arctic Engineering study programme in Greenland.

To meet societal demands for not only good engineers with a solid education but also for engineers with a research background, DTU Byg is focusing on PhD programme. To highlight this effort we have decided to appoint and celebrate 'PhD of the year at DTU Byg' among the PhD candidates that finished their work in 2009. You can read about PhD of the year 2009 together with the panel's reasons and the presentation of his work.

I hope you enjoy reading the report.

Acting Head of Department

Henrik Stang
hs@byg.dtu.dk

Organisation

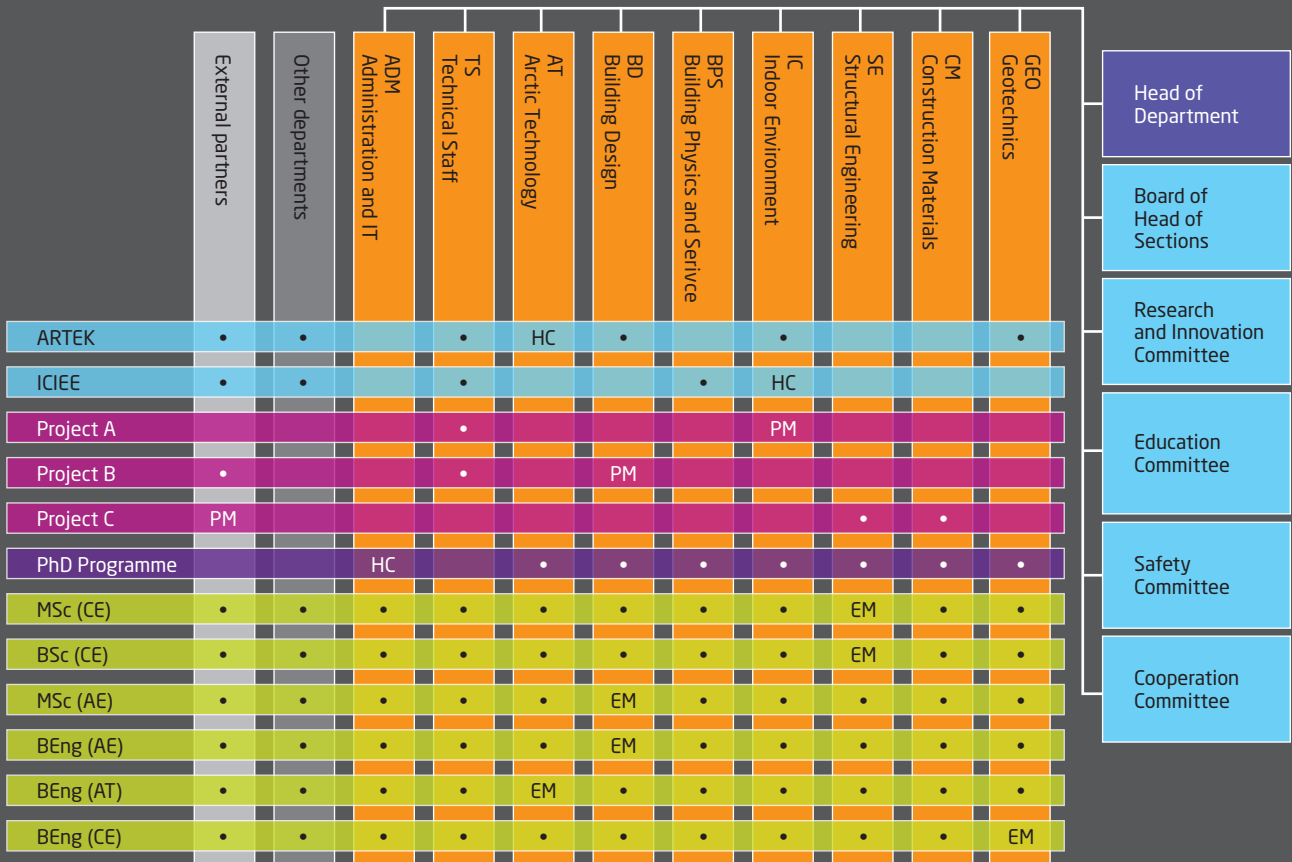


Figure: Organisation Diagram

HC: Head of Centre
 PM: Project Manager
 EM: Education Manager
 •: Project/Education Participant

Sections:

- Arctic Technology
Professor Arne Villumsen
- Building Design
Professor Kristian Hertz
- Building Physics and Services
Professor Carsten Rode
- Construction Materials
Professor Ole Mejlhede Jensen
- Geotechnics
Associate Professor Ole Hededal
- Indoor Environment
Professor Bjarne Olesen
- Structural Engineering
Professor Jeppe Jönsson
- Administration and IT
Søren Burcharth
- Laboratories and Workshops
Jørgen Bjørnbak Hansen

Centres:

- ARTEK, Arctic Technology Centre
Professor Arne Villumsen.
- ICIEE, Centre for Indoor Environment and Energy
Professor Bjarne W. Olesen.

Study Programmes:

- Civil Engineering (MSc)
Associate Professor John Forbes Olesen
- Building Technology (BSc)
Professor Per Goltermann
- Architectural Engineering (MSc)
Associate Professor Jan Karlshøj
- Architectural Engineering (BEng)
Associate Professor Lotte Bjerregaard
- Building Engineer (BEng)
Associate Professor Anette Krogsbøll
- Arctic Technology (BEng)
Associate Professor Hans Peter Christensen

Advisory Board:

- Professor (adj.) Louis Becker, Architect
MAA, AIA, RIBA. Design Director,
Partner, Henning Larsen Architects
- CEO Ingelise Bogason, ALECTIA
- Division Director Niels Kjeldgaard,
MTHøjgaard
- Head of Office Lasse Sundahl, Danish
Enterprise and Construction Authority

Head of Department (acting):

- Professor Henrik Stang

A partnership with great mutual benefits

The cooperation between Femern A/S and the Technical University of Denmark works as a driver for development of new knowledge of geotechnical engineering



PhD Student Sara Gottlieb
Section for Geotechnics
sargo@byg.dtu.dk



Associate Professor
Ole Hededal
ohl@byg.dtu.dk

The Section for Geotechnical Engineering of DTU Civil Engineering is involved in the Fehmarn Belt fixed link project. Associate Professor and Head of Section Ole Hededal and Research Manager Niels Foged serve as members of the Femern A/S Geotechnical Expert Group. The group is acting as independent advisors to Femern A/S in order to ensure the level of quality by reviewing and discussing critical geotechnical aspects of the different technical solutions. Currently the focus is on the geotechnical investigations and laboratory tests. One of the major soil mechanical challenges is geological formation denoted Palaeogene clay. This formation was assessed to be complicated with respect to predicting long-term deformation, i.e. either swelling when unloaded or settlements when loaded. Already in the early stages of the Fehmarn Belt project, it was realised that better knowledge about the Palaeogene clay would be needed. Therefore Rambøll Danmark A/S and Femern A/S initiated an industrial PhD in cooperation with DTU Civil Engineering. Ole Hededal acts as supervisor to an industrial PhD project being conducted by Sara Gottlieb.

Several aspects

There are several aspects of the project that need to be considered. First of all, the Palaeogene clay is highly plastic with a very complex mechanical and rheological behaviour of which there is limited experience both in Denmark and internationally. Secondly, part of the formation has been dislocated and disturbed by the glaciers during the ice ages. This has caused changes in the material structure, e.g. fissures, and thereby in the mechanical response. The purpose of the PhD project "Deformation and strength properties of highly plastic, fissured Palaeogene clay" is to extend the knowledge of the Palaeogene clay in the Fehmarn Belt. The work will focus on the mechanical and physical/rheological properties of the clay from an experimental point of view. Working with highly plastic clay requires good, reliable laboratory equipment. These days the soil mechanics laboratory at DTU Civil Engineering is



At the end of Denmark in Rødby, the Fixed Link to Germany will take off.
Illustration: Femern A/S

upgrading its mechanical testing devices, i.e. triaxial test apparatus and CRS equipment, to meet the requirements of the clay. At present the Constant Rate of Strain, CRS, apparatus has been upgraded with a new oedometer cell, pressure actuators to control back pressure, pore pressure transducers and a new control program. All of these improvements have been made possible thanks to a contribution from our industrial collaborators. Grontmij-Carl Bro sponsored the back pressure system and GEO has supplied the control system for both the CRS and the triaxial test system and is offering on-going technical support.

Interesting results

The first test on the Fehmarn Belt samples in the CRS has been conducted successfully and the second is about to happen. With the new equipment, new ways of controlling and analysing the tests have been made possible. Some very interesting results have been obtained, which may affect the test procedures and evaluation of the commercial Fehmarn Belt program.

The fact that the tests of the PhD project are conducted in the geotechnical laboratory of DTU Civil Engineering is of great value to discussions in the Expert Group. The close contact between the two projects makes the information flow fast and easy. Hence, any new knowledge may be easily conveyed to the fixed link project.



The soil samples taken from 50-100 m below the seabed are stored in container under controlled climatic conditions. Photo: Femern A/S

Using electrochemistry to save archeological wood

DTU Civil Engineering is part of a Nordic collaboration on the re-conservation of archeological wooden objects. Many of these important archeological artifacts have been conserved with alum and are now in danger of total destruction unless the preservation is removed



Researcher Iben Vernegren Christensen
Section for Construction Materials
ivch@byg.dtu.dk

When archaeologists find waterlogged wood in archeological excavations, the wet wood may appear to be in good condition with the original shape and ornamentations intact. However, when such finds are more than 2000 years old, like the wood in the Iron Age Hjortspring find dated 350 BC, the wood may be severely decayed and only the presence of water prevents the wood from disintegrating.

The conservators in the museums therefore have to treat the wood before it is dried and ready to put on display in the museums. From 1850-1960, a hot solution of alum ($KAlSO_4$) was the preferred treatment both in Denmark, Norway and Sweden. This means that many important finds like the Hjortspring find and part of the Norwegian Oseberg find from the Viking Age (800 AD) - considered the most richly ornamented Viking Age find in the world - have been treated with alum.

However, we now know that the alum treatment does not provide adequate protection of the wooden objects and there is a need for re-conservation before important parts of our cultural heritage are lost forever. A Nordic collaboration involving the Technical University



Cart from the Oseberg Viking Age find - partly alum-treated. Excavated in 1904. Viking Ship Museum, Oslo. Photo: Museum of Cultural History, University of Oslo / Eirik Irgens Johnsen

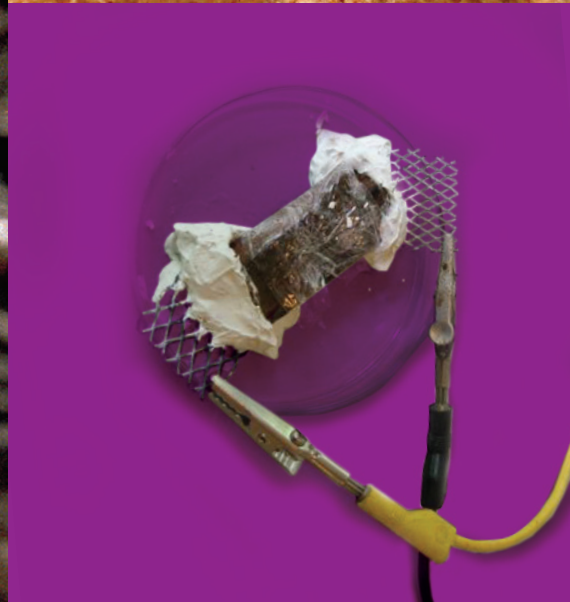
of Denmark, the National Museum of Denmark, the University of Oslo and the Swedish National Heritage Board are currently trying to work across borders in an attempt to solve the problems of the alum-treated wood and find suitable solutions for re-conservation.

Extraction of alum

In alum-treated wood, the ingress of alum into the wood is often limited to the outermost millimetre, and the inner part of the object is thus left untreated. The shape of the object may thus be preserved, but the untreated wood in the centre has often shrunk/collapsed during drying, causing internal cracking. The alum treatment makes the wood heavy and brittle and the treated wood is also subject to structural pulverization which may eventually cause the total destruction of the artifact. The disadvantages of the alum treatment method have resulted in different attempts at re-conservation. At the Danish National Museum this is presently done by extracting the alum in water followed by re-conservation with polyethylenglycol (PEG) - a suitable conservation method by today's standards. At DTU Civil Engineering we have developed a method whereby an



Detail of cart from the Oseberg find. Photo: Museum of Cultural History, University of Oslo / Ove Holst



Removal of alum from archeological wood using an applied electric field. Experimental set-up

applied electric field is used to remove salt ions from porous materials. The method was originally used for the decontamination of soil, but the principles can be transferred to other porous materials with unwanted ions, like alum-treated wood. A low voltage DC field is applied across the wood and the alum ions (K^+ , Al^+ and SO_4^{2-}) are transported by the electric field out of the wooden object.

The wood we use for the electrokinetic experiments is original alum-treated pieces from the Hjortspring and Nydam finds (supplied by the Danish National Museum) and from the Oseberg find (supplied by the Museum of Cultural History in Oslo, Norway).

The only method

The method has the advantage of faster extraction of the alum, but more importantly it may be the only method for removing alum if soaking the object is to be avoided. Extraction by soaking may still be the best solution for smaller objects in relatively good condition, whereas electrokinetic removal may be suited for larger or more fragile objects.



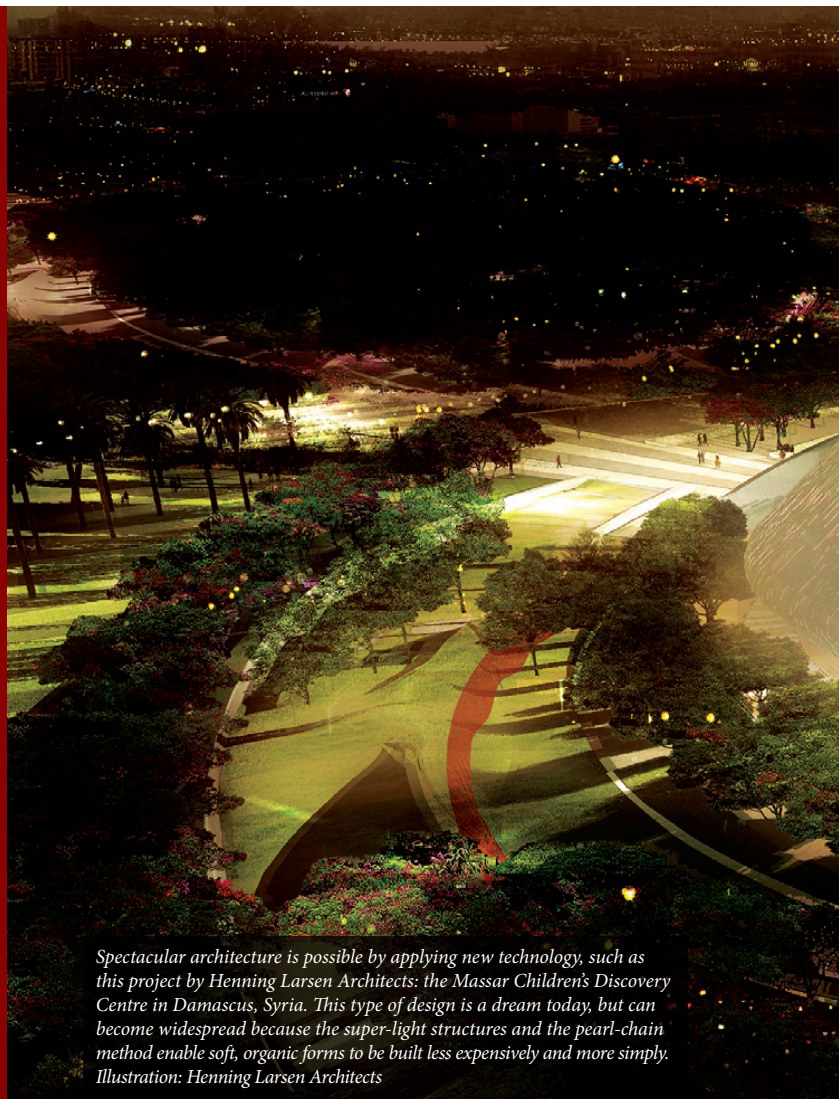
Severely damaged alum-treated wood from the Iron Age Viemose find. The picture represents a worse-case scenario if no action is taken to re-conservate these vulnerable objects. Photo: Inger Bojesen-Koefoed

The next generation of building structures is born

A new and innovative technology can reduce materials consumption and CO₂ emissions. In addition, it will revolutionize modern architecture and construction practice



Professor Kristian Hertz
Section for Building Design
khz@byg.dtu.dk



Spectacular architecture is possible by applying new technology, such as this project by Henning Larsen Architects: the Massar Children's Discovery Centre in Damascus, Syria. This type of design is a dream today, but can become widespread because the super-light structures and the pearl-chain method enable soft, organic forms to be built less expensively and more simply. Illustration: Henning Larsen Architects

A new technology for load-bearing structures has been developed based on two patented principles by Professor Kristian Hertz at DTU Civil Engineering: Super-light structures and pearl-chain reinforcement.

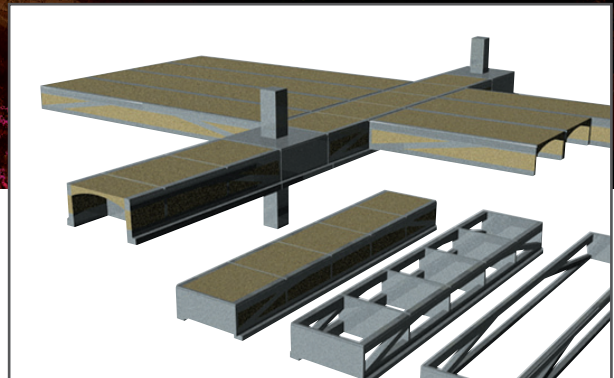
By redesigning the traditionally expensive and energy-intensive steel and concrete constructions a new generation of structures is created that will set a new standard for resource efficient and sustainable building technology. The new structures are made of concrete, but are often less than half the weight of conventional structures, and thereby the costs and CO₂ emissions relating to manufacture, transport and construction are proportionally reduced. This is why the new structures are called "super-light". The new structures consist of a minimal skeleton of ordinary heavy concrete embedded in a concrete of very low weight. Just as the soft parts of a body are needed for the skeleton of a human or an animal to remain in place, the lightweight concrete fixes, stabilizes, and protects the skeleton of strong concrete. This leads to extremely resource-economical structures so light that they can float on water.

Very different structures and complete buildings have been designed and evaluated, and almost everywhere you get benefits which previously have been considered unthinkable such as:

- 50% cut in materials consumption
- 50% cut in energy consumption and CO₂ emissions
- 50% price reduction
- No need for scaffolding

- Cheaper moulds
- Faster construction
- Improved durability
- Good thermal insulation comparable to that of wood structures without the problems of rot and fire
- Improved moisture absorption reduces indoor climate regulation costs
- Good possibilities for drilling holes and cutting grooves for new services after the building is finished
- Increased protection from fire, earthquakes and explosions
- New possibilities for architectural expression

Of course, the lightness means that you can design longer spans and higher buildings. But the application of ultra lightweight concrete weighing only 600 kg per cubic metre to fill out the shape also means that the moulds for casting can be made much lighter, cheaper and of quite different materials and shapes as those used for ordinary concrete. In addition, the pearl-chain reinforcement, which is a spine of strong concrete blocks placed on a prestressed wire, makes it cheaper to produce structures like beams and shells of any curved shape. This, combined with the fact that arches usually are optimal shapes for forces, means that it is now often affordable to use curved arches and vaults instead of straight rectangular structures. The new technology therefore opens the door to a wealth of new possibilities for architects, liberating buildings from the many tight constraints that previously have hindered natural shapes in building design. This pushes the standard for what constitutes a resource-economic building.



Pi-Omega precast beam system

Research, development

A research and development centre for super-light structures is being established at DTU Civil Engineering, where several aspects of the technology will be developed further. A PhD study with Grontmij Carl Bro and DTU Electrical Engineering is investigating the sound-damping of super-light deck structures, where the stiffness of a vaulted super-light structure is taken into consideration, allowing a considerable weight reduction compared to traditional massive or hollow-core decks.

Other projects deal with the development of new, light self-levelling foam concretes for casting out the ultra-light moulds, the development of new pearl-chain structures and their pre-stressing techniques, investigating the interaction between light and strong concrete counteracting deflections, investigating optimal design by means of the new technology, and investigating the new possibilities for architectural design.

Super-light structures with pearl-chains offers a multitude of advantages for “tailor-made” structures cast on the building site, allowing impressive, unique and optimized shapes to be made much cheaper than previously. This might cause a revolution in architecture, where the designs are no longer subject to economical constraints. However, super-light technology also means a renewal for prefabricated structures. New factory-produced building systems are being designed by Kristian Hertz based on the super-light technology for all kinds of buildings. The Pi-Omega system, for example, consists of vaulted slab- and beam-elements. Other

new building systems are designed for large halls with span-widths of 40-400 m, including a standard arch hall for industry, storage, or sport. Ongoing projects seek to develop low-bridge-systems and tunnel elements with optimal usage of the structural materials.

Commercialization

A marketing company, Abeo, will be established in cooperation with partners from International Business at Copenhagen Business School selling licenses for the technology and the building systems. A number of actual building projects are now implementing the technology, architects have adopted the new possibilities in their visionary designs, suppliers of building materials are making new standard products which facilitate industrial and customized applications, full prefabricated building systems are ready for production, and recently, new investors have decided to open a Chinese office of the marketing company.

For more information, please visit www.super-light.dk

Arctic oil spills fought with fire

The Arctic Technology Centre, together with the Norwegian research institute SINTEF, tested alternative oil spill response methods in the Barents Sea. The results indicated that in situ burning is very effective



PhD Student Janne Fritt-Rasmussen
Arctic Technology Centre
jfr@byg.dtu.dk

The Arctic contains approximately 25% of remaining undiscovered global oil and gas resources. While the region presents a significant development opportunity for the oil and gas industry, this development will take place in a very harsh environment. As such, there is a need to conduct extensive research into ways to develop this important resource in a manner that protects the ecosystem, and addresses the concerns of local inhabitants. Consequently, the independent Norwegian research organization SINTEF has established a Joint Industry Project, "Oil in ice", that examined various methods for cleaning up oil spills on ice. Experiments on burning accidentally spilled oil on spot – a method known as in situ burning – was included in the project and so far the results are promising. This JIP is funded by the Norwegian Research Council and the six oil companies Agip, ConocoPhillips, Chevron, Shell, Statoil and Total.

PhD student Janne Fritt-Rasmussen from the Arctic Technology Centre at DTU Civil Engineering is writing her thesis on in situ

burning of oil spills in the Arctic in cooperation with SINTEF as part of the "Oil in ice" project, and she participated in the final field experiment in the Barents Sea north of Norway in spring 2009.

Fire in the Barents Sea

In May 2009, the research vessel Lance left Longyearbyen on Svalbard heading for the marginal ice zone in the Barents Sea north-east of Hopen. The purpose of the journey was to perform various experiments with oil spill response in ice. The experimental area was found after three days in the choppy Barents Sea: 70-90% ice coverage and minimal activity from birds and mammals.

Two experiments were conducted; a long-term experiment focusing on the weathering of oil and a large-scale burning experiment. Seven cubic metres of crude oil were released for the long-term experiment. The oil slick was closely monitored for the eight days the experiment lasted, and samples for various physical and



Burning of experimental oil spill in the Barents Sea and small-scale burning. Photo: Janne Fritt-Rasmussen

Research vessel Lance in the marginal ice zone in the Barents Sea, west of Svalbard. Photo: Janne Fritt-Rasmussen



chemical analyses and small-scale burning were taken regularly. The experiments showed that the oil was ignitable for five days after it had been released. The second experiment involved 2 m³ of crude oil weathered for 10 hours between the ice floes before the oil was ignited and successfully burned. Prior to the fieldwork, several laboratory experiments had been performed which involved burning oils with different degrees of weathering (evaporation/water content) in a specially designed set-up, which imitates real life in 125 ml size. To confirm the laboratory experiments it was necessary to make comparisons with real data. The experiments in the Barents Sea were thus unique experiments in order to verify the many studies in the laboratory. This was fully accomplished.

Why in situ burning?

In situ burning is an effective and simple method with considerable potential, especially in Arctic conditions due to:

- Low emulsification. The ice dampens the wave movement

resulting in slow water uptake (emulsification). High water content normally makes ignition impossible.

- Low temperature. Oil evaporation is reduced due to the low temperatures. Thus more ignitable compounds are present in the oil.
- Ice. A crucial parameter for successful burning is a connected oil layer with a certain thickness. Broken sea ice reduces the oil spreading compared to open sea and thereby contributes to better conditions for in situ burning.

Some research has been performed over the last 30-40 years, even so there is a need for more knowledge about burning oil. In particular, more knowledge about the time window for in situ burning of weathered oil. This is precisely what Janne Fritt-Rasmussen's PhD project and field experiments in the Barents Sea have contributed to.

New Professor in Building Physics

By instituting a new professorship in building physics, the Department of Civil Engineering aspires to play a leading role in the development of high-performance buildings for the future



Professor Carsten Rode
Section for Building Physics and Service
car@byg.dtu.dk



A new highly energy-efficient dormitory building currently being constructed in extreme climate conditions at Sisimiut, Greenland. Illustration: tnt-nuuk a/s

We spend 90% of our time in buildings, and 40% of national energy consumption is related to the operation of buildings – heating, ventilation, lighting etc. The buildings themselves, as well as the activities which are carried out in buildings, represent important expenditures for our society, businesses and for ourselves as private people. In consequence, it is of paramount importance that our buildings are energy-efficient, healthy to stay in and durable. And obviously they also should be aesthetically and functionally optimal for our use.

A theme of broad interest

Building physics is the science that studies different phenomena in conjunction with the aim to achieve the optimal building solution for the future's new and renovated existing buildings. In order to strengthen the research in building physics and put the scientific field into focus, the Department of Civil Engineering has instituted a new professorship in building physics. Carsten Rode MSc, PhD in civil engineering, was appointed new professor in November 2009 and the department thereby aspires to playing a leading role in the development of high-performance buildings for the future. Research in building physics is executed by developing computational models and making laboratory and field investigations of building materials, building structures and whole buildings. As such, it is a science that combines many ongoing research fields at the Department of Civil Engineering as well as being a theme of interest to building industry consultants and manufacturers and to building owners, users and authorities with whom the department has close collaboration.

New challenges in future

Climate change incurs new challenges when buildings need to be able to sustain more extreme exposures while still remaining durable, efficient and comfortable. Therefore, we need highly insulated building structures, advanced fenestration products and efficient methods to heat and ventilate our buildings, as well as preferably passive methods to keep the building from becoming too warm. Fortunately, new building products are being produced, but we must know and understand their properties well and use

the products in the most appropriate way when determining how they tie in with other parts of the building. We insulate our buildings better, which is generally considered an advantage, but the exterior shell of well-insulated buildings becomes colder and must be protected from damage due to moisture or frost which in the past were avoided only at the expense of high energy consumption. While we should thrive in energy-efficient buildings, biological and some chemical processes should not be allowed to develop and we must therefore prevent the conditions that lead to their proliferation. The new professorship will now be implemented to provide the highly efficient, comfortable and durable buildings we need for the future.

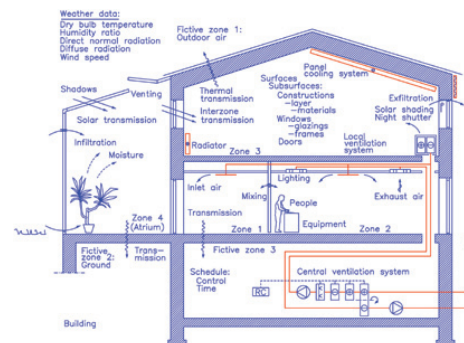


Illustration of the many building objects and services which are considered in advanced building simulations. Illustration: SBI, the Danish Building Research Institute

Carsten Rode (born 1963) qualified at the Technical University of Denmark and has been an associate professor with the Department of Civil Engineering since 1996. He has previously worked for the Danish Building Research Institute and he has a very well-developed network with contacts in the building industry and colleagues on the international research scene. He is currently chairman of the International Association of Building Physics. He is a very active educator who teaches all levels of the engineering studies from first semester B.Eng. classes to PhD students. He is also head of the Section for Building Physics and Services, and a member of the Academic Council of DTU.

Research into human quality of life in cities

A collaboration between DTU Civil Engineering and architectural firms aims towards a universal method to evaluate urban space quality based on measurable parameters. The objective is to create an optimum environment

Axeltorv in the city of Copenhagen – a wide open space and therefore exposed to urban wind. Photo: Miriam Ann Hellmann and Victor August Aalund-Olsen



Associate Professor Holger Koss
Section for Structural Engineering
hko@byg.dtu.dk



Study of the ground-near wind conditions on Axeltorv in Copenhagen performed in the wind tunnel at DTU Civil Engineering. Miriam Ann Hellmann and Victor August Aalund-Olsen, students in Architectural Engineering, conducted their BSc project within the framework of a research collaboration between DTU Civil Engineering and Gehl Architects. Photo: Holger H. Koss

Mission

One research activity at DTU Civil Engineering focuses on the evaluation of urban space quality. The majority of activities performed by people in cities take place in urban areas. From sitting at an outdoor café or strolling through a shopping zone or just a brisk walk from one spot to another, all such activities in open public areas are significantly affected by the quality of the ambient environment. For this reason architects, developers, city planners and municipalities seek to create optimal environments. Even though efforts at finding ideal solutions have been documented over the last many years, few scientifically based methods have been developed. Individual aspects of climatic conditions affecting city life have been researched, such as predicting pedestrian wind comfort in urban areas. Using the latest technologies and methods in simulating urban environments, our research concentrates on the development of a holistic approach combining wind, air temperature, humidity and quality, sun radiation and noise nuisance in the evaluation of urban space quality. As mentioned, the approach will be based on measurable quantities. Non-measurable influences on city life relate, for example, to architectural aesthetics. Our mission is to translate experience and knowledge in urban design collected from antiquity to today into universal criteria that can be investigated with modern natural science and serve as a guide to the “Ideal City”.

Design tools for the future

A widely used criterion in the evaluation of urban space quality is the assessment of pedestrian wind comfort. Both the function of the space and the dominating climatic condition, namely wind, are combined in this approach. In order to predict the local ground-near airflow conditions, the overall urban wind needs to be simulated. Wind tunnel testing techniques have been developed in recent decades as proven methods of investigating the ground-near wind in detail. Wind tunnel testing has been used traditionally in many new development projects both for studying the wind environment and the imposed wind loads on the new building structure. In particular, simulating urban wind is a complex task requiring a suitable test facility or immense computational power.

The fast developments in computational power and user-friendly software in Computational Fluid Dynamics (CFD) are finding an increasing number of applications in research and engineering. Paralleled with wind tunnel testing, CFD makes it possible to include additional climatic parameters in the simulation of urban climate. A newly started PhD project at DTU Civil Engineering on “Integration of CFD in structural and architectural wind engineering” will focus on the simulation of urban climate. The research work currently undertaken by Nina Gall Jørgensen combines numerical and experimental simulations, e.g. in the wind tunnel at DTU Civil Engineering, as well as measurements of environmental conditions in nature.

Research to improve city life

Presently, half the world’s population lives in urban areas. In industrialised countries, the percentage of urbanised population in 2006 was on average 76%. Against this, Denmark is with 86% one of the most urbanised countries. According to the UN report on world population, the trend of increasing urbanisation will continue worldwide and challenge city planners to cope with future demands. As a consequence, urban space will play a far more central role for human activities in cities and thus increase focus on the quality of the urban space.

This issue is being intensely discussed within the scientific community in wind and environmental engineering. In this connection we are involved in international research collaborations and networks. Furthermore, collaboration with architects provides input for the non-measurable aspects, namely architecture and aesthetics. For example, a collaboration project with Gehl Architects on subjective and objective evaluation methods of urban space quality was conducted last year within the framework of this research.

DTU takes the temperature of indoor air in schools

DTU Civil Engineering participated in last year's Danish Science Festival by testing the indoor environment in 330 schools. The results showed that the environment in Danish schools is much poorer than that of schools in our neighbouring countries



Associate Professor Geo Clausen
Section for Indoor Environment
gc@byg.dtu.dk



Tomorrow's researchers measuring CO₂ in their classroom. Pupils from A-mager Fælled Skole. Photo: Carsten Andersen/Dansk Naturvidenskabsformidling

Student performance depends on both the ability to concentrate while in class and on the level of school attendance; factors which are closely related with the indoor environment in schools. Recent studies at the Technical University of Denmark, DTU have shown that poor indoor environment in schools has an unfavourable impact on student performance, as the pupils performed approximately 15% worse in classrooms with poor indoor environment compared to classrooms with good indoor environment. Earlier studies in Denmark and abroad have indicated that ventilation in schools is often inadequate. So what is the status of the indoor environment in Danish schools today?

Every year, Danish Science Communication arranges the Danish Science Festival to promote a wider and deeper understanding of science and technology in Denmark. One of the activities of this festival is a mass experiment involving schoolchildren. In 2009, the idea was raised of letting students in 1,000 classes measure some important indoor climate parameters in their classrooms.

Classrooms are characterised by a high occupant density, and ventilation is therefore needed to dilute and remove human bioeffluents. The concentration of CO₂ is a simple measure of how well a room is ventilated in relation to the number of occupants. Normally the indoor CO₂ concentration varies between 400 and 2500 ppm (parts per million), and in some cases it rises up to 5000 ppm. The outdoor CO₂ concentration is approximately 385 ppm.

Regulations and recommendations

The Danish Building Regulations 2008 (BR08) prescribes that new schools must have a balanced ventilation system that provides a volume flow rate of 0.4 l/s per m² floor area and 5 l/s per person in the classroom. This corresponds to a CO₂ concentration of approximately 1200 ppm. The Danish Working Environment Authority (WEA) aimed at employees in Denmark recommends that the indoor CO₂ concentration should not exceed 1000 ppm, and if it exceeds 2000 ppm for more than short periods during a day, the ventilation is inadequate.

Methods

It was decided to let the schoolchildren themselves perform measurements of the CO₂ concentration and temperature in the classroom. A simple method was used for measuring CO₂ concentrations, consisting of a measuring tube and a syringe, as shown in the photo above. Furthermore, the schoolchildren determined the amount of mould in the classroom, but this is not described further here. Similar experiments were performed simultaneously in Sweden and Norway, using the same measuring equipment. After the data was sorted, there was usable CO₂ data from 743 of the participating classes in 330 different schools. This means that there were results from 74% of the participating classes, and that 13% of all schools in Denmark provided data for this study. In Sweden, 238 classes in 135 schools reported their results, and in Norway 448 classes in 170 schools participated.

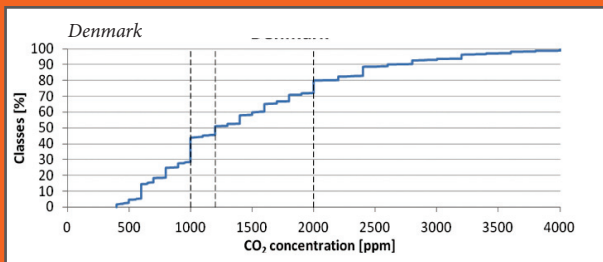


Fig. 1 Cumulated distribution of CO₂ concentrations

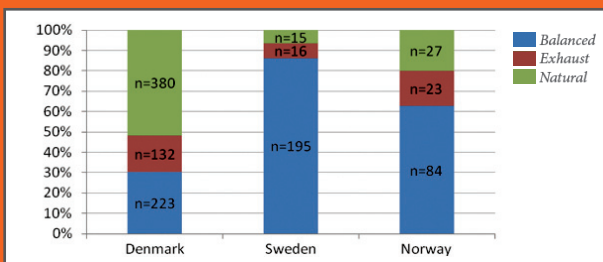


Fig. 2 Type of ventilation found in the participating schools

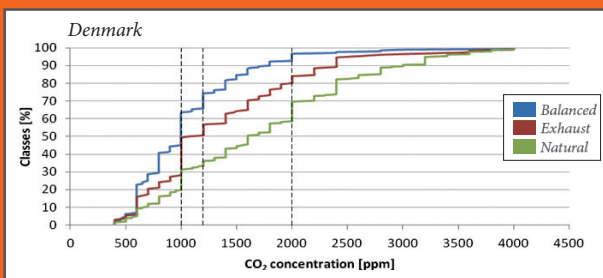


Fig. 3 Accumulated distribution of CO₂ concentrations from the three different types of ventilation



Engaged pupils from Amager Fælled Skole looking at the first results of the measurements of the CO₂ concentration and temperature in their classroom. Photo: Carsten Andersen/Dansk Naturvidenskabsformidling

Results

The results showed that the indoor environment in Danish schools was poor. 56% of all the participating classes reported CO₂ concentrations higher than 1000 ppm (see fig. 1). The results from the mass study in Sweden and Norway were 16% and 21%, respectively, which showed that our neighbouring countries had a substantially better indoor environment in their schools. One explanation for this can be found in the type of ventilation used. As seen in fig. 2, less than half of the participating Danish schools had mechanical ventilation, whereas more than 90% in Sweden and almost 80% in Norway had mechanical ventilation. In general, classrooms with balanced ventilation are better ventilated than those with natural ventilation. This is illustrated in fig. 3, showing cumulated distribution of CO₂ concentrations in Danish Schools for the different types of ventilation.

As expected, larger room volume per person was shown to influence the CO₂ concentration in the classrooms positively. So was the construction year of the schools, since there was a significant tendency that newer schools had lower average CO₂ concentrations than older schools.

Reflections

This was in many ways unusual research. The fact that fast feedback to the schools was very important meant that we received the data on a Wednesday and handed in our feedback report on

the following Friday. This was a challenge. The following Monday it made headlines in the national news. Also the fact that it was schoolchildren of various ages that were making the measurements could certainly make many experienced researchers more than a bit nervous. But the experimental work was designed to work under these conditions, and the reward was, besides the interesting results, the joy of having had approximately 20,000 schoolchildren engaged in the assessment of their own indoor environment. We have since continued our research on indoor environments in schools by making long(er) term measurements in a representative sample of 100 Danish schools using more advanced equipment.

Two students, Henriette Ryssing Menå and Eva Maria Larsen, analyzed the data as part of their MSc Project. The examiner of the MSc Project Lars D. Christoffersen, Head of Research, Alectia states: This kind of science really provides knowledge and attention. After conducting the experiment, 20,000 pupils are now aware that we actually do influence the environment. And it encourages conscientious decision-makers to take action. As consultants, we can appreciate these results as they qualify and support sustainable development.

The Arctic Engineering programme - a success story

Interest in the Arctic Engineering programme has increased greatly in recent years. Between 18 and 20 students have been enrolled each year for the last three years. Three-quarters of these students have come from Greenland



Associate Professor Hans Peter Christensen
Head of the Arctic Technology study programme
hpc@byg.dtu.dk



Professor Arne Villumsen
Arctic Technology Centre
av@byg.dtu.dk

Greenland – and the rest of the Arctic – offers major technological challenges, and there is a considerable need for people with special knowledge about arctic conditions. Topics such as mining, energy supply, and the maintenance of infrastructure in the Arctic are examples of areas that require specialised technological solutions. Since 2001, students studying engineering have been able to enrol in “Arctic Engineering” that takes place partly in Sisimiut, the second-largest town in Greenland, and partly at DTU in Lyngby. Arctic Technology is a four-year engineering programme taught in Danish. Most of the students are from Denmark or Greenland. At present it is possible to specialize in building and construction, environment and planning, or geology and natural resources. A specialization that will make it possible to become a high-school teacher in mathematics, physics or chemistry in Greenland is currently being developed.

Interest in this education was limited at first and only 8-10 students were enrolled each year. It was not economically viable to run these courses with such low numbers. However, the Greenland government provides economic subsidies for DTU to perform university education in the country. Interest has increased greatly in recent



years. Between 18 and 20 students have been enrolled each year for the last three years. About three-quarters of these have been from Greenland, and about a fourth are women. A total of 114 students have been enrolled since the beginning of 2001. Some of these have dropped out, but the retention rate is increasing towards the average for DTU as a whole.

The main criterion for success is naturally the number of graduates. After the initial low numbers it is very satisfactory that we have now (15 February 2010) reached a total of 22 engineering graduates, eight of whom finished last year. We are proud that so many have chosen this programme and that so many have qualified as arctic engineers. It is also very satisfying that we now have the first PhD student with an arctic engineering background.

Jobs for all – also in the future?

So far our graduates have been very successful at finding jobs. The current reorganization of Greenland society towards improvements in the fields of sustainability, infrastructure, environmental aware-



The picture gallery identifies the graduates as of 15th February 2010 and provides information as to their profession or further education after finishing their engineering degree. Photo: Fartato Olsen

ness, utilization of natural resources and the renovation of housing, does not imply a shortage of jobs for our graduates.

With its location in the far north, Greenland is a good place from which to provide engineering know-how to the rest of the Arctic. It is something of a challenge for Greenland industry to live up to the slogan “Arctic technology that has been developed and tested in Greenland must be exported to the rest of the Arctic” – this was how the task was formulated several years ago when the Arctic Technology Centre, ARTEK, was established.

Other participants on Arctic courses

ARTEK also offers project-orientated courses for “ordinary” DTU students that involve three weeks of fieldwork in the summer period. From February 2010 it is possible to spend the spring period in Greenland during the “International Semester”, and in 2010 we are holding a “Summer University” in Greenland – an approx. three-week summer course.

The 'PhD of the year at DTU Byg' for 2009 is proudly awarded to Jens Henrik Nielsen for his thesis 'Tempered glass - bolted connections and related problems'. The assessment committee praised the high scientific quality of the work, combining novel experimental techniques with advanced numerical modelling.

The committee moreover applauded the research production resulting from Jens' thesis: Four papers were submitted to international journals, three of which have already been published. Finally, Jens' thesis is well written, with figures and tables of high quality.

Tempered glass for structural use

The use of glass in modern facades ("Den Norske Opera & Ballett" located at the Oslo harbour). Photo: Jens Henrik Nielsen

A numerical model for predicting the residual stress in tempered glass has been developed and validated in a PhD project at DTU Civil Engineering. The model can be used for optimizing the tempering process in order to improve the quality of the tempered glass



Assistant Professor Jens Henrik Nielsen
Section for Structural Engineering
jhn@byg.dtu.dk

Archaeologists date man-made glass back to the old Mesopotamian period (about 5000 BC). Around 100 AD transparent pieces of glass were used for windows by the Romans. After that the process has been refined considerably to increase the transparency and properties of glass. Even though glass has been used for many years, it has not been used for structural load-carrying purposes until recently. Utilizing the strength of glass in load-carrying structural elements is attaining an increasing interest among e.g. architects, and glass is widely used in modern buildings, e.g. Den Norske Opera & Ballet.

Due to the high brittleness of glass, surface flaws govern its tensile strength, making it relatively low and unreliable. Furthermore, the tensile strength is also found to be dependent on the loading time.

In order to increase the tensile strength and minimize the time-dependency of the strength, glass can be tempered. Tempered glass is produced by rapid cooling from above the glass transition temperature (about 575°C). This process induces a self equilibrated residual stress state in the glass where the surface is in compression. Such a process might increase the apparent strength 4-5 times and practically eliminate the time dependency. However, the apparent strength is due to the residual stresses and these stresses will be spatially dependent, see fig. 1.

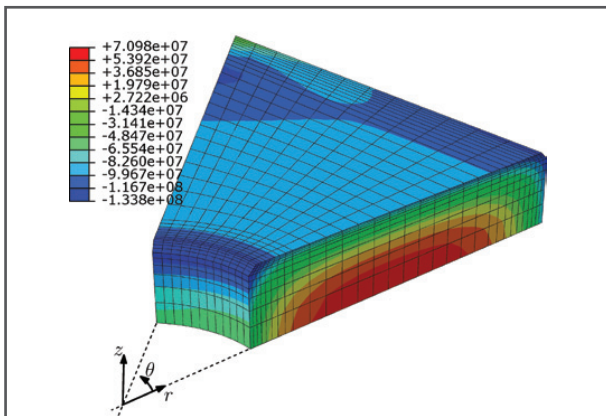


Fig. 1 Contour plot showing the tangential stresses in a square plate with a centrally located hole. Only 1/16 of the geometry is shown

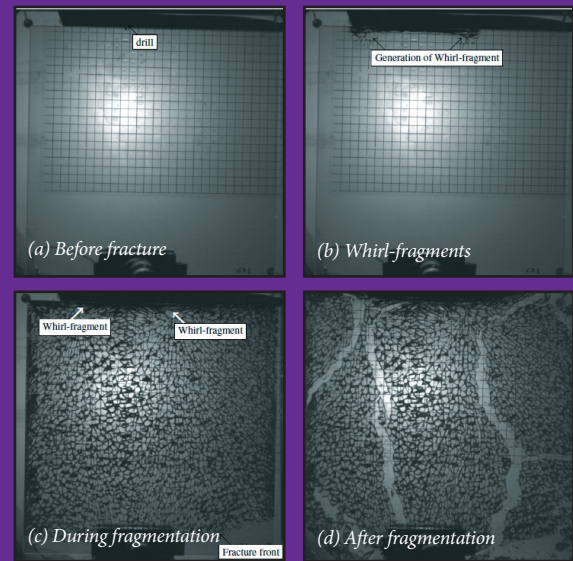


Fig. 2 Fragmentation of tempered glass. Fracture initiated by drilling

Numerical model

During the work at DTU Civil Engineering, a numerical model capable of predicting the stress state in an arbitrary geometry of glass has been developed. Such a tool can be used for predicting the apparent strength of tempered glass at e.g. holes, which is of great use when designing bolted joints in tempered glass. The model is capable of predicting the transient stresses at the tempering which can be used for optimizing the tempering process in order to improve the quality of the tempered glass.

A new hypothesis

The failure in tempered glass is very characteristic due to the sudden release of the residual stresses. This causes the tempered glass to fragmentize completely. Part of the PhD project has investigated this phenomenon by using high-speed cameras, and captured images to determine the velocity of the fragmentation and a never before reported phenomenon, namely the so-called whirl-fragments as shown in fig. 2. Images were also captured through the narrow side of the glass and revealed that the shape of the in-plane fragmentation front, which corrected a hypothesis from 1962 based on investigating the fragments from the failure, see fig. 3. These investigations were also used for setting up a hypothesis for the development of the fragmentation. Tempered glass is increasingly used for load-carrying purposes; however, such structures are most often over-dimensioned due to the uncertainties about the properties of tempered glass. The work at DTU Civil Engineering can be used by architects and engineers for gaining important knowledge of behaviour of tempered glass in order to design safe sustainable structures

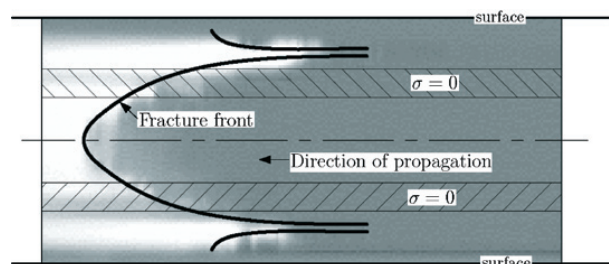


Fig. 3 Shape of the in-plane fragmentation front



Focus on engineering competences

A survey among newly graduated engineers from DTU and their employers indicates general satisfaction with the teaching and education at DTU Civil Engineering



Students at DTU Civil Engineering practice engineering during their studies and combine theory and practice in many ways. Photo: Mikkel Adsbøl



Associate Professor Anette Krogsbøll
Education Manager
akr@byg.dtu.dk

Most young engineers graduated from DTU Civil Engineering and their employers are satisfied with the education and the engineering competences they bring with them into their first job as an engineer. That is the main result of a survey conducted in 2009.

In spring 2009, Learning Lab DTU carried out a survey for the department. Questionnaires were sent to all the engineers that received a degree in civil engineering from DTU Civil Engineering in 2004 or 2005, and to as many employers as possible. As a follow-up and in order to present the results, a seminar for employers was arranged in May 2009.

The main aim of the survey and the seminar was to obtain answers to the following questions:

- Do new engineers from DTU Civil Engineering have the required skills in order to perform their first job as an engineer?
- Which skills should they bring with them from the university and which skills are better developed within the scope of their first job?

Room for improvement

The newly graduated engineers as well as the employers had a positive impression in general of the competences that civil engineers from DTU have brought into their first job. About three quarters of the engineers answering the questionnaire indicated that they were able to meet the requirements of their first job. However, all agreed that newly graduated engineers need to continuously improve their qualifications while working, and that being able to and interested in learning more are among the most important requirements. The department is interested in a dialogue with the stakeholders of the educations, and the continuously ongoing revision of our educations and the teaching methods should hopefully tie in with the interests of employers and society in general.

A total of 329 employers and 310 young engineers (161 BSc Engineering, and 149 MSc Civil Engineering) received a questionnaire. Approximately 15% responded to the questionnaire. This is a quite poor response rate, but since the results were in accordance with similar surveys conducted previously among other groups of engineers and employers, we believe that the results are valid nevertheless.

Important skills

The focus in the questionnaires was on which engineering competences are expected in addition to the strictly technical knowledge. In other words, the skills and attitudes that make the engineer able to work in cooperation with others, in a responsible manner, and under many different conditions. Examples of the most important skills indicated by the survey include:

- Engineering reasoning and problem-solving
- Personal skills (creativity, curiosity, flexibility, open-minded attitude etc.)
- Communication skills (teamwork, oral and written communication etc.)
- System-oriented analyses (over all solutions, perspective etc.)

In 2008 a new teaching concept was implemented for students on the bachelor of engineering programmes at DTU. The concept is called CDIO (Conceive, Design, Implement, Operate). It is based on the principle that engineering is problem-solving, and basically consists of four phases represented by the letters CDIO. The most important point is that students should practise engineering during their studies, and thereby develop their skills within engineering. The purpose of the new study programme is to integrate all the competences mentioned in the survey in the curriculum for the new generation of engineers. The outcome of the survey and the seminar confirms that the new study programme seems to be heading in the right direction.

Tailoring the concrete-steel system for improved corrosion resistance

A thermodynamic basis for describing corrosion processes was established in a recent PhD project at DTU Civil Engineering. This provides a promising tool for the evaluation of available and the development of new corrosion countermeasures



Associate Professor Mette Geiker
Section for Construction Materials
mge@byg.dtu.dk



Professor Per Møller
Department of Mechanical Engineering
pm@mek.dtu.dk



PhD André Küter
COWI A/S
anku@cowi.dk

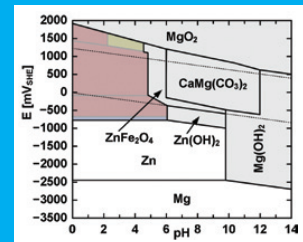
Reinforced concrete is the most widely used construction material for bridges, tunnels and other civil structures. Large sums are used to ensure the durability of the concrete structures, especially to protect them against reinforcement corrosion. Several strategies to counteract reinforcement corrosion have been proposed. However, only a few methods – such as using stainless steels and cathodic protection – are considered to be effective. And these cannot always be justified for economical or technical reasons. Thus, there is still a demand for effective and cost-efficient corrosion countermeasures. The lack of performance of some countermeasures can be explained by conceptual weaknesses from a thermodynamic perspective, as the descriptions of both the corrosion mechanisms and the protection mechanisms are inconsistent or incomplete.

From thermodynamics to effective countermeasures

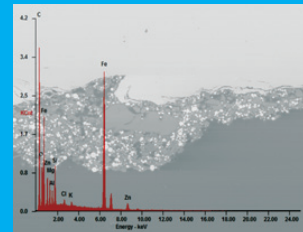
A consistent thermodynamic basis for describing the corrosion of steel in concrete was established to provide a tool for the evaluation of available and the development of new corrosion counter-

Concrete structure face durability challenges in the harsh marine environment. Construction of Helgeland Bridge, Leirfjorden, Norway." Photo: COWI A/S

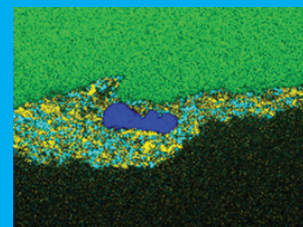
Investigations on a magnesium doped zinc silicate primer applied to the surface of carbon steel reinforcement.



Superimposed multi-element Pourbaix diagrams of Mg-Ca-C-H₂O, Zn-Fe-Cl-H₂O, and Fe-Cl-H₂O systems.



EDS spectrum superimposed on corresponding BS image of Mg grain in Zn silicate primer on carbon steel surface.



EDS mapping of Mg grain in Zn silicate primer on carbon steel surface.

measures. The work covered: a) the adaptation of thermodynamic principles to the area of reinforcement corrosion, b) a thermodynamically consistent description of the diverse corrosion states of steel in concrete, c) the assessment of available countermeasures, and d) the development of theoretical concepts for new, effective and cost-efficient countermeasures. In addition, two principles for implementing the developed concepts were proposed. The two proposed principles are founded on the use of ordinary carbon steel reinforcement and can be applied to both new and existing structures. The first principle is based on a tailored surface modification of the steel reinforcement, whereas the second principle employs new concepts for sacrificial anodes. Obtaining targeted low corrosion potential is the primary aim of both principles. The materials concept of the first principle also enables concrete-steel interface improvement by electrochemical densification during the setting of concrete as well as the formation of pore-blockers at later stages. These actions are immobilised in the materials concept for the second principle to provide a low resistance anode-concrete interface for a high current output.

New and inexpensive materials concepts

The materials concepts employ small portions of magnesium and zinc in combination with supplementary inexpensive compounds, which are both chemically and electrochemically active. The principle-specific features are achieved by tailored proportioning of the materials and customised production processes. By means of these low-cost solutions, carbon steel reinforcement is kept at the targeted low corrosion potentials, while hydrogen evolution or any other undesired interference between the introduced materials concepts and the concrete-steel system are prevented. This way, the corrosion protection of reinforcement in carbonated or chloride-contaminated concrete can be improved in a cost-efficient manner.



Solar collectors being tested at the Department of Civil Engineering.
Photo: Jianhua Fan

Development and lifetime of solar collectors

A cooperation between Arcon Solvarme A/S and DTU Civil Engineering has resulted in improved efficiency of solar collectors for solar heating plants and an estimated life span of the collectors of about 30 years



Associate Professor Simon Furbo
Section of Building Physics and Services
sf@byg.dtu.dk

One of the most attractive types of solar heating systems in Denmark is solar heating plants supplying a town or a part of a town with heat by means of district heating networks. In these systems a solar collector field produces heat in sunny periods. During the period 2002-2007, Arcon Solvarme A/S developed their so-called HT solar collector for solar heating plants in cooperation with the Department of Civil Engineering. Arcon Solvarme A/S has produced solar collectors for about half of all the solar heating plants worldwide.

The changes applied during the development were:

- Insulation material changed from Isover glass wool to Rockwool Industribatts 80
- Absorber emittance changed from 0.12 to 0.06
- Glass cover changed from AFG Solite to AFG Solatex
- Glass surfaces supplied with an antireflection treatment by Sunarc Technology A/S
- Improved installation of Teflon foil to increase durability and decrease thermal bridges
- Improved edge insulation

Improvements

The design changes mentioned above resulted in strongly improved collector efficiency. The annual thermal performance determined using weather data from the Danish Design Reference Year appear from table 1. From 2002 to 2007, the thermal performance of the



solar collector increased by 39% for a mean solar collector fluid temperature of 60°C. The main reasons for the strongly improved thermal performance are the antireflection treatment of the cover glass, the improved absorber and the improved installation of the Teflon foil. The thermal performance increases with increasing solar collector fluid temperature.

Lifetime of solar collector

During 2009, old versions of two HT collectors, one from the solar heating plant in Marstal and one from the solar heating plant in Ottrupgaard, have been investigated. The collectors have been in operation at high temperature levels for 13 and 15 years, respectively. The investigations showed that the efficiency of the collectors has fallen since they were installed. The reduction in annual thermal performance caused by 13-15 years of ageing are about 2% at a temperature level of 40°C, about 10% at a temperature level of 60°C and about 25% at a temperature level of 80°C.

It is estimated that the reduced thermal performance is only caused by the state and installation of the Teflon foil. Apart from the ageing problems with the Teflon foil, which most likely are solved during the above-mentioned development work, the condition of the collectors is remarkable good. The extent of corrosion in the absorber pipes is surprisingly small. Based on the investigations, the lifetime of the collectors is estimated to be about 30 years.



8000 m² solar collector field in Brødstrup. Photo: Jianhua Fan

Reference

“Levetid for solfangere i solvarmecentraler”. Ziqian Chen, Jianhua Fan, Bengt Perers and Simon Furbo. DTU Byg, report R-210, 2009.

Table 1. Thermal performance of HT collectors

Mean solar collector fluid temperature	Annual thermal performance of HT collector before 2002	Annual thermal performance of 2007 HT collector	Improvement in thermal performance of solar collector from 2002 to 2007
40° C	485 kWh/m ²	628 kWh/m ²	29%
60° C	360 kWh/m ²	501 kWh/m ²	39%
80° C	256 kWh/m ²	398 kWh/m ²	55%
100° C	172 kWh/m ²	311 kWh/m ²	80%

Figure 1. Sketch of an HT collector



1. Glass Frame: Top and bottom mouldings made of EPDM rubber
2. Glass: 4 mm, non-iron, and non-breakable glass with a fitted back
3. Convection Trap: Teflon insulation suspended between glass and absorber
4. Absorber: Copper tube/aluminium plate with selective surface
5. Vapour and Diffusion Trap: Aluminium foil
6. Insulation: 75 mm glass wool
7. Sill Profile: Extruding aluminium profiles
8. Back: 0.5 mm treaded aluminium sheet

Patents and teaching at DTU

The Department of Civil Engineering has teaching and research in focus. A new patented technique is incorporated in the teaching just as a new patent has been developed during a current PhD programme



Professor Per Goltermann
Education Manager
pg@byg.dtu.dk

The teaching and the research at DTU Civil Engineering focus on high quality, but also on combining theories and testing with a clear link to the performances in practice using actual cases and problems. This approach has in 2009 led to incorporation of a new patented technique in the teaching as well as the development of a new patent during a current PhD programme.

New patents used in teaching

Teaching civil engineering students at the Technical University of Denmark, DTU, includes not only the classic engineering knowledge, but also a teaching of independence and understanding of structures and their design.

It was therefore tempting to use DTU's new patents on Super Light Structures invented by Professor Kristian Hertz, DTU Civil Engineering, in 2007 as a starting point in a problem-based project course 11050 "Super Light Structures", where the students should carry out an individual design of a structure or structural element using the new concept.



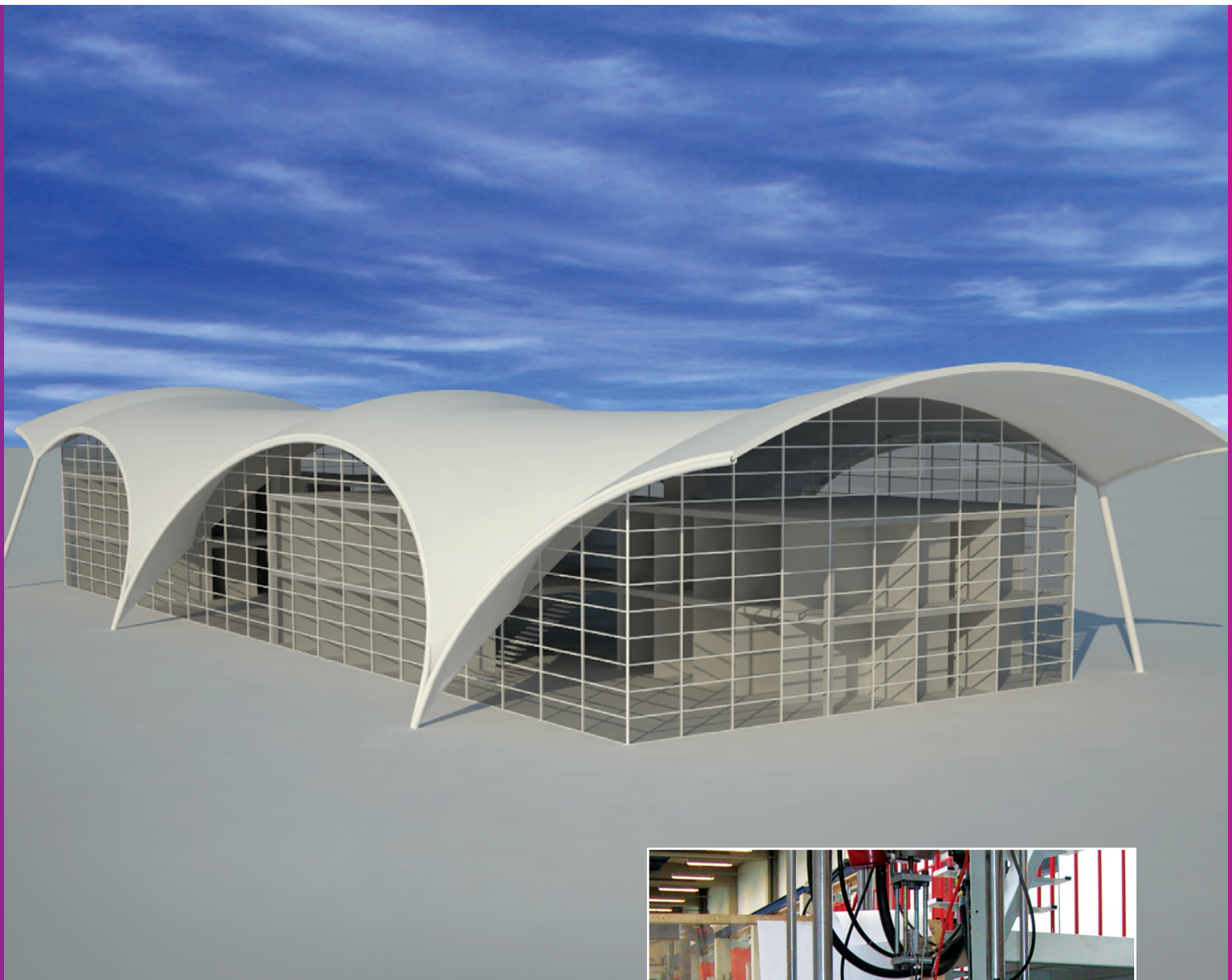
The patented anchor and the prestressing barrel

Advanced numerical methods used for simulating stresses and strains in the anchor and the rod during the testing

This approach provides the students with a good opportunity to develop their skills in project formulation, good engineering design and estimation and also lead to a number of new draft designs for Super Light Structures. Some of these may be implemented in practice as the students' work has been a good source of inspiration for the Centre for Super Light Structures, not only due to their technical qualities, but also through their visualisations of the designs. In addition, the new technology serves as a subject for developing commercial models in the teaching on the International Business programme at Copenhagen Business School, CBS. A group of students from CBS has in cooperation with DTU won a prize at the Venture Cup in Applied Technology with their project on Super Light Structures.

An industrial PhD programme

The quality and performance of the infrastructure are vital for the efficiency and competitiveness of society. It requires large investments in the infrastructure, both through new structures, but also by strengthening and upgrading existing structures.



The building is a design proposal based on super light structures for the new building 324 at DTU. The inner parts of the building are designed with the Pi-Omega system and the roof shell incorporates the pearl-chain system. From the Master's thesis: Designing with Super Light Structures, by Andreas Castberg

DTU and the world's leading bridge design company COWI decided therefore in 2007 to initiate an industrial PhD study by Jacob W. Schmidt on the topic of external strengthening of structures with prestressed CFRP (Carbon Fibre Reinforced Polyester) rods, mainly as a mean of strengthening bridges, but also focusing on solutions which could be used in other fields..

The most critical aspect of the external prestressing was quickly identified to be the performance of the anchorage and the study has so far focused on combining good craftsmanship, engineering intuition with clear experimental and theoretical documentation for the design of a new anchoring system. This approach into a new field has lead to over ten papers produced during the project, a number of which may increase during the students' stay at Hong Kong University. The anchoring system developed in the study has already been awarded a Swedish patent, just as an international patent application has been submitted. The patent owners are currently negotiating with producers and contractors for the industrial application of the anchor in practice. Jens Sandager, Head of the Bridge Operation and Maintenance



Testing the new anchor as part of a Master's project at DTU Civil Engineering. Photo: Jacob W. Schmidt

Department at COWI: The industrial PhD cooperation between DTU and COWI A/S provides an excellent basis for developing state-of-the-art technology in connection with strengthening existing concrete bridge structures.

Publications

Journal papers -ISI-indexed

Abuku, Masaru; Janssen, Hans; Poesen, Jean; Roels, Staf
Impact, absorption and evaporation of raindrops on building facades
In: *Building and Environment*, vol: 44(1), p. 113-124 (2009). Pergamon
Type: Journal article

Andersen, Elsa; Furbo, Simon
Theoretical variations of the thermal performance of different solar collectors and solar combi systems as function of the varying yearly weather conditions in Denmark
In: *Solar Energy*, vol: 83(4), p. 552-565 (2009). Pergamon
Type: Journal article

Bekö, Gabriel; Fadeyi, M.O.; Clausen, Geo; Weschler, Charles J.
Sensory pollution from bag-type fiberglass ventilation filters: Conventional filter compared with filters containing various amounts of activated carbon
In: *Building and Environment*, vol: 44(10), p. 2114-2120 (2009). Pergamon
Type: Journal article

Bekö, Gabriel
Used filters and indoor air quality
In: *A S H R A E Journal*, vol: 51(3), p. 64-72 (2009). American Society of Heating, Refrigerating and Air-Conditioning Engineers, Inc. (A S H R A E)
Type: Journal article

Bolashikov, Zhecho Dimitrov; Melikov, Arsen Krikor; Krenek, M.
Improved Performance of Personalized Ventilation by Control of the Convection Flow around an Occupant's Body
In: *ASHRAE Transactions*, vol: 115, Part 2. (2009).
Type: Journal article

Causone, Francesco; Corgnati, Stefano P.; Filippi, Marco; Olesen, Bjarne W.
Experimental evaluation of heat transfer coefficients between radiant ceiling and room
In: *Energy and Buildings*, vol: 41(6), p. 622-628 (2009). Elsevier S.A.
Type: Journal article

Causone, Francesco; P. Corgnati, Stefano; Olesen, Bjarne W.
Solar radiation and cooling load calculation for radiant systems: Definition and evaluation of the Direct Solar Load
In: *Energy and Buildings* (2009).
Type: Journal article

Clorius, Christian Odin; Pedersen, Martin Uhre; Hoffmeyer, Preben; Damkilde, Lars
An experimentally validated fatigue model for wood subjected to tension perpendicular to the grain
In: *Wood Science and Technology*, vol: 43(3), p. 343-357 (2009). Springer
Type: Journal article

Fadeyi, M.O.; Weschler, Charles J.; Tham, K.W.
The impact of recirculation, ventilation and filters on secondary organic aerosols generated by indoor chemistry
In: *Atmospheric Environment*, vol: 43(22-23), p. 3538-3547 (2009). Pergamon
Type: Journal article

Hagerhed-Engman, L.; Bornehag, Carl-Gustaf; Sundell, Jan
Building characteristics associated with moisture related problems in 8,918 Swedish dwellings
In: *International Journal of Environmental Health Research*, vol: 19(4), p. 251-265 (2009). Taylor & Francis Ltd.
Type: Journal article

Haller, Michel; Cruickshank, Chynthia; Streicher, Wolfgang; Harrison, Stephen J.; Andersen, Elsa; Furbo, Simon
Methods to determine stratification efficiency of thermal energy storage processes—Review and theoretical comparison
In: *Solar Energy*, vol: 83(10), p. 1847-1860 (2009). Pergamon
Type: Journal article

Hertz, Kristian Dahl
Super-light concrete with pearl-chains
In: *Magazine of Concrete Research*, vol: 61(8), p. 655-663 (2009). Thomas/Telford Ltd.
Type: Journal article

Hibino, Y.; Ichinose, T.; Costa, J.L.D.; Nielsen, Mogens Peter
Procedure to predict the storey where plastic drift dominates in two-storey building under strong ground motion
In: *Earthquake Engineering and Structural Dynamics*, vol: 38(7), p. 929-939 (2009). John/Wiley & Sons Ltd.
Type: Journal article

Hägerhed-Engman, L.; Sigsgaard, T.; Samuelson, I.; Sundell, J.; Janson, S.; Bornehag, Carl-Gustaf
Low home ventilation rate in combination with moldy odor from the building structure increase the risk for allergic symptoms in children
In: *Indoor Air*, vol: 19(3), p. 184-192 (2009). Wiley-Blackwell Publishing, Inc.
Type: Journal article

Janssen, Hans; Roels, Staf
Qualitative and quantitative assessment of interior moisture buffering by enclosures
In: *Energy and Buildings*, vol: 41(4), p. 382-394 (2009). Elsevier S.A.
Type: Journal article

Jensen, Kasper Lyng; Toftum, Jørn; Friis-Hansen, Peter
A Bayesian Network approach to the evaluation of building design and its consequences for employee performance and operational costs
In: *Building and Environment*, vol: 44(3), p. 456-462 (2009). Pergamon
Type: Journal article

Johannesson, Björn; Janz, Mårten
A two-phase moisture transport model accounting for sorption hysteresis in layered porous building constructions
In: *Building and Environment*, vol: 44(6), p. 1285-1294 (2009). Pergamon
Type: Journal article

Johannesson, Björn; Hosokawa, Yoshifumi; Yamada, Kazuo
Numerical Calculations of the Effect of Moisture Content and Moisture Flow on Ionic Multi-Species Diffusion in the Pore Solution of Porous Materials
In: *Computers & Structures*, vol: 87(1-2), p. 39-46 (2009). Pergamon
Type: Journal article

Johansson, Marie; Ormarsson, Sigurdur
Influence of growth stresses and material properties on distortion of sawn timber : – numerical investigation
In: *Annals of Forest Science*, vol: 66, Article no. 6 (2009). EDP Sciences
Type: Journal article

Kerrouche, A.; Boyle, W.J.O.; Sun, T.; Grattan, K.T.V.; Schmidt, Jacob Wittrup; Täljsten, Björn
Enhanced FBG sensor-based system performance assessment for monitoring strain along a prestressed CFRP rod in structural monitoring
In: *Sensors and Actuators A: Physical*, vol: 151(2), p. 127-132 (2009). Elsevier S.A.
Type: Journal article

Kerrouche, Abdelfateh; Boyle, William J.O.; Sun, Tong; Grattan, Kenneth T. V.; Schmidt, Jacob Wittrup; Täljsten, Björn
Strain Measurement Using Embedded Fiber Bragg Grating Sensors Inside an Anchored Carbon Fiber Polymer Reinforcement Prestressing Rod for Structural Monitoring
In: *I E E E Sensors Journal : Special issue on sensors systems for structural health monitoring*, vol: 9(11), p. 1456-1461 (2009). I E E E
Type: Journal article

Kirkelund, Gunvor Marie; Ottosen, Lisbeth M.; Villumsen, Arne
Electrodialytic remediation of harbour sediment in suspension - Evaluation of effects induced by changes in stirring velocity and current density on heavy metal removal and pH
In: *Journal of Hazardous Materials*, vol: 169(1-3), p. 685-690 (2009). Elsevier BV
Type: Journal article

Kolarik, Jakub; Toftum, Jørn; Olesen, Bjarne W.; Shitzer, Avraham
Occupant Responses and Office Work Performance in Environments with in Environments with Moderately Drifting Operative Temperatures (RP-1269)
In: *H V A C & R Research*, vol: 15(5), p. 931 (2009). American Society of Heating, Refrigerating and Air-Conditioning Engineers, Inc. (ASHRAE)
Type: Journal article

Lima, Ana T.; Ottosen, Lisbeth M.; Ribeiro, Alexandra B.
Electroremediation of straw and co-combustion ash under acidic conditions
In: *Journal of Hazardous Materials*, vol: 161(2-3), p. 1003-1009 (2009). Elsevier BV
Type: Journal article

Lura, Pietro; Jensen, Ole Mejlhede; Weiss, Jason

Cracking in cement paste induced by autogenous shrinkage
In: *Materials and Structures*, vol: 42(8), p. 1089-1099 (2009).
Springer Netherlands Type: Journal article

Lura, Pietro; Couch, J.; Jensen, Ole Mejlhede; Weiss, Jason

Early-age acoustic emission measurements in hydrating cement paste:
Evidence for cavitation during solidification due to self-desiccation
In: *Cement and Concrete Research*, vol: 39(10), p. 861-867 (2009).
Pergamon Type: Journal article

Masaru, Abuku; Janssen, Hans; Roels, Staf

Impact of wind-driven rain on historic brick wall buildings in a moderately cold and humid climate: Numerical analyses of mould growth risk, indoor climate and energy consumption
In: *Energy and Buildings*, vol: 41(1), p. 101-110 (2009). Elsevier S.A.
Type: Journal article

Nielsen, Jens Henrik; Olesen, John Forbes; Stang, Henrik

The Fracture Process of Tempered Soda-Lime-Silica Glass
In: *Experimental Mechanics*, vol: 49(6), p. 855-870 (2009).
Springer New York LLC Type: Journal article

Ottosen, Lisbeth M.; Jensen, Pernille Erland; Hansen, Henrik K.; Ribeiro, Alexandra B.; Allard, Bert

Electrodialytic Remediation of Soil Slurry-Removal of Cu, Cr, and As
In: *Separation Science and Technology*, vol: 44(10), p. 2245-2268 (2009). Taylor & Francis Type: Journal article

Ottosen, Lisbeth M.; Rørig-Dalgaard, Inge

Desalination of a brick by application of an electric DC field
In: *Materials and Structures*, vol: 42(7), p. 961-971 (2009). Springer Netherlands Type: Journal article

Ottosen, Lisbeth M.; Hansen, Henrik K.; Jensen, Pernille Erland
Relation Between pH and Desorption of Cu, Cr, Zn, and Pb from Industrially Polluted Soils

In: *Water, Air and Soil Pollution*, vol: 201(1-4), p. 295-304 (2009).
Springer Netherlands Type: Journal article

Perers, Bengt

A new concept for combisystems characterization: The FSC method
In: *Solar Energy* (2009). Pergamon Type: Journal article

Perers, Bengt

Optimization of systems with the combination of ground-source heat pump and solar collectors in dwellings
In: *Energy* (2009). Pergamon Type: Journal article

Perers, Bengt

Projected beam irradiation at low latitudes using Meteororm database
In: *Renewable Energy*(34), p. 1394-1398 (2009). Pergamon Type: Journal article

Ryhl-Svendsen, M.; Clausen, Geo

The Effect of Ventilation, Filtration and Passive Sorption on Indoor Air Quality in Museum Storage Rooms
In: *Studies in Conservation*, vol: 54(1), p. 35-48 (2009). Earthscan Ltd.
Type: Journal article

Scheffler, Gregor Albrecht; Plagge, Rudolf

A whole range hygric material model: Modelling liquid and vapour transport properties in porous media
In: *International Journal of Heat and Mass Transfer*, vol: 53, p. 286-296 (2010). Pergamon Type: Journal article

Schiavon, S.; Melikov, Arsen Krikor

Energy-saving strategies with personalized ventilation in cold climates
In: *Energy and Buildings*, vol: Volume 41 (Issue 5), p. Pages 543-550(2009).
Type: Journal article

Schiavon, S.; Melikov, Arsen Krikor; Sekhar, C.

Energy analysis of the personalized ventilation system in hot and humid climates
In: *Energy and Buildings*, In Press, Corrected Proof, (2009).
Type: Journal article

Schiavon, S.; Melikov, Arsen Krikor

Introduction to Cooling Fan Efficiency Index
In: *HVAC&R Research*, vol: 16(6), p. 1121-1144 (2009).
Type: Journal article

Steskens, Paul Wilhelmus Maria Hermanus; Janssen, Hans; Rode, Carsten

Influence of the convective surface transfer coefficients on the Heat, Air, and Moisture (HAM) building performance
In: *Indoor and Built Environment*, vol: 18(3), p. 245-256 (2009).
Sage Science Press (UK) Type: Journal article

To, G.N.S.; Wan, M.P.; Chao, C.Y.H.; Fang, Lei; Melikov, Arsen Krikor

Experimental Study of Dispersion and Deposition of Expiratory Aerosols in Aircraft Cabins and Impact on Infectious Disease Transmission
In: *Aerosol Science and Technology*, vol: 43(5), p. 466-485 (2009).
Taylor & Francis Inc. Type: Journal article

Toftum, Jørn

Central automatic control or distributed occupant control for better indoor environment quality in the future
In: *Building and Environment*, vol: Article in press (2009). Pergamon Type: Journal article

Toftum, Jørn; Andersen, Rune Vinther; Jensen, Kasper Lynge

Occupant performance and building energy consumption with different philosophies of determining acceptable thermal conditions
In: *Building and Environment*, vol: 44(10), p. 2009-2016 (2009). Pergamon Type: Journal article

Tällsten, Björn; Blanksvärd, Thomas; Carolin, Anders

Shear Strengthening of Concrete Structures with the use of mineral based composites
In: *Journal of Composites for Construction*, vol: 13(1), p. 25-34 (2009). American Society of Civil Engineers
Type: Journal article

Wan, M.P.; To, G.N.S.; Chao, C.Y.H.; Fang, Lei; Melikov, Arsen Krikor

Modeling the Fate of Expiratory Aerosols and the Associated Infection Risk in an Aircraft Cabin Environment
In: *Aerosol Science and Technology*, vol: 43(4), p. 322-343 (2009).
Taylor & Francis Inc. Type: Journal article

Weschler, Charles J.

Changes in indoor pollutants since the 1950s
In: *Atmospheric Environment*, vol: 43(1), p. 153-169 (2009). Pergamon Type: Journal article

Wesselsky, Andreas; Jensen, Ole Mejlhede

Synthesis of pure Portland cement phases
In: *Cement and Concrete Research*, vol: 39(11), p. 973-980 (2009). Pergamon Type: Journal article

Yang, B.; Melikov, Arsen Krikor; Sekhar, C.

Performance evaluation of ceiling mounted personalized ventilation system
In: *ASHRAE Transactions*, vol: 115, Part 2. (2009).
Type: Journal article

Journal papers
- Peer Reviewed

Jørgensen, Anders Stuhr

Vejbbygning i områder med permafrost
In: *Trafik & Veje : Dansk Vejtidskrift*, vol: 8, p. 44-46 (2009).
AVF-fonden
Type: Journal article

Nielsen, Hans Rasmus; Jørgensen, Anders Stuhr; Villumsen, Arne

Vejbbygning og udvikling i Sydgrønland
In: *Trafik & Veje : Dansk Vejtidskrift*, vol: 8, p. 4-6 (2009).
AVF-fonden
Type: Journal article

Nørgaard, Jørgen; Tarasova, Natalia P.; Moostafin, D. I.

Derailed Growth Debate
In: *Chemistry in the Interest of Sustainable Development*, vol: 17, p. 333-338 (2009). Russian Academy of Science
Type: Journal article

Rajabipour, Farshad; Fischer, Gregor; Sigurdardottir, Thorunn; Goodnight, S.; Leake, A.; Smith, E.

Recycling and Utilizing Waste Glass as Concrete Aggregate
In: Transportation Research Board. State-of-the-Art Report, Article no. 09-2195 (2009). U.S. National Research Council Transportation Research Board Type: Journal article

Schoenmakers, J.C.M. Dennis; Svensson, Staffan

Embedment tests perpendicular to the grain-optical measurements of deformation fields.
In: European Journal of Wood and Wood Products (2009).
Type: Journal article

Svensson, Staffan

Duration of load effects of solid wood: A review of methods and models
In: Wood Material Science and Engineering, vol: 3-4, p. 115-124 (2009). Taylor & Francis Ltd. Type: Journal article

Tian, Qian; Jensen, Ole Mejlhede

Measurement with corrugated tubes of early-age autogenous shrinkage of cement-based material
In: Journal of The Chinese Ceramic Society, vol: 37(1), p. 39-45 (2009). The Chinese Ceramic Society Type: Journal article

Ølgaard, Andreas Breum; Nielsen, Jens Henrik; Olesen, John Forbes

Design of Mechanically Reinforced Glass Beams : Modelling and Experiments
In: Structural Engineering International, vol: 19(2), p. 130-136 (2009). International Association for Bridge and Structural Engineering
Type: Journal article

Books

Babiak, Jan; Olesen, Bjarne W.; Petras, Dusan

Rakennusten pintalämmitysja -jäähdytys : REHVA Guidebook.
- Painettu Suomessa, Forssan Kirjapaino Oy, Finland, 2009 Type: Book

Babiak, Jan; Olesen, Bjarne W.; Petras, Dusan

Aquecimento a baixa temperatura e arrefecimento a temperatura elevada. - Lisboa, 2009 Type: Book

Goltermann, Per; Kjærbye, Per Oluf H

Helvægge og dæk af letbeton : Bæreevne og stabilitet.
- Dansk Beton : Dansk Beton, 2009 (p. 39) Type: Book

Jensen, Ole Mejlhede; Hansen, Per Freiesleben

The Science of Construction Materials. - Heidelberg : Springer Verlag, 2009 (p. xx, 308) Type: Book

Jensen, Ole Mejlhede; Lura, Pietro; Goodwin, Fred; Bentz, Dale; Hooton, Doug; Kovler, Konstantin; Weiss, Jason

Standard Test Method for Autogenous Strain of Cement Paste and Mortar. - C1698 ed. - West Conshohocken, PA : ASTM International, 2007 (p. 8) Type: Book

Books Chapters

Andersen, Maj Munch; Geiker, Mette Rica

Nanotechnologies for Climate Friendly Construction – Key Issues and Challenges

In: Nanotechnology in Construction ; 3 : SpringerLink, 2009 (199-207 p.)
Type: Book chapter

Arnbjerg-Nielsen, Karsten; Hededal, Ole; Henze, Mogens

Infrastructure and climate change
In: DTU Climate Change Technologies : Recommendations on accelerated development and deployment of climate change technologies ; 4.1.C - 1 ed. - Kgs. Lyngby : Technical University of Denmark (DTU), 2009
Type: Book chapter

Bindstev, Henrik; Larsen, Hans Hvidtfeldt; Hjuler Jensen, Peter; Rasmussen, Flemming; Madsen, Peter Hauge; Furbo, Simon; Sylvester-Hvid, Kristian O.; Sommer-Larsen, Peter; Pilegaard, Kim

Sustainable energy: wind, solar and biomass
In: DTU Climate Change Technologies : Recommendations on accelerated development and deployment of climate change technologies / Editor: Nielsen, Niels Axel ; Larsen, Hans Hvidtfeldt ; Halsnæs, Kirsten ; Møller, Jacob Steen ; Hansen, Jakob Fritz ; Frøkjær Strand, Iben - Kgs. Lyngby : Technical University of Denmark (DTU), 2009 (18-22 p.)
Type: Book chapter

Fawcett, Tina; Hvelplund, Frede; Meyer, Niels I

Making It Personal: Per Capita Carbon Allowances
In: Generating Electricity : in a Carbon-Constrained World - London,UK : Elsevier, 2009 (87-108 p.) Type: Book chapter

Geiker, Mette Rica; Andersen, Maj Munch

Nanotechnologies for sustainable construction
In: Sustainability of construction materials / Editor: Khatib, Jamal - 1 ed. - : Woodhead Publishing, 2009 (254-284 p.) Type: Book chapter

Goltermann, Per

Letbetonkonstruktioner
In: Teknisk Ståbi - 20 ed. - : Nyt Teknik Forlag, 2009 Type: Book chapter

Møller, Jacob Steen

Innovation og forskning
In: Fretidens byggeerhverv i et globaliseringsperspektiv - Danmark : ATV, Akademiet for de Tekniske Videnskaber, 2009 (33-41 p.)
Type: Book chapter

Møller, Jacob Steen

Sustainable Buildings
In: DTU Climate Change Technologies : Recommendations on accelerated development and deployment of climate change technologies - Kgs. Lyngby : Technical University of Denmark (DTU), 2009 (30-33 p.)
Type: Book chapter

Nicolai, Andreas; Scheffler, Gregor Albrecht; Grunewald, John; Plagge, Rudolf

An efficient numerical solution method and implementation for coupled heat, moisture and salt transport. : The Delphin Simulation Program
In: Simulation of Time Dependent Degradation of Porous Materials - Göttingen : Cuvillier Verlag, 2009 (85-100 p.)
Type: Book chapter

Nicolai, Andreas; Scheffler, Gregor Albrecht; Grunewald, John; Plagge, Rudolf

Development of a combined heat, moisture, and salt transport model for unsaturated porous building materials
In: Simulation of Time Dependent Degradation of Porus Materials - Göttingen : Cuvillier Verlag, 2009 (67-84 p.) Type: Book chapter

Olesen, Bjarne W.

Praxishandbuch der technischen Gebäudeausrüstung (TGA) : Inst allationssysteme,Flächenheiz- und -kühlssysteme Vertragsrecht für Architekten und Ingenieure : Uponor, 2009 Type: Book chapter

Olesen, Bjarne W.; Rode, Carsten

Buildings: consuming and conserving energy
In: Engineering challenges : energy, climate change & health : , 2009 (72-81 p.) Type: Book chapter

Ottosen, Lisbeth M.; Hansen, Henrik K.; Jensen, Pernille Erland

Electrokinetic Removal of Heavy Metals
In: Electrochemical Remediation Technologies for Polluted Soils, Sediments and Groundwater - 1 ed. - : Wiley, 2009 Type: Book chapter

Sommer-Larsen, Peter; Furbo, Simon

Solar energy
In: How ambitious can we be in contributing to the world's energy

needs with bioenergy, wind, solar and storage? : Targets and road maps from workshop / Editor: Bindslev, Henrik - Roskilde : Risø National Laboratory for Sustainable Energy, 2009 (27-40 p.) Type: Book chapter

Conference papers - Peer Reviewed

Abuku, Masaru; Roels, Staf; Janssen, Hans; Poesen, Jean

Towards a reliable prediction of moisture response of walls to wind-driven rain

Presented at: Energy Efficiency and New Approaches, 2009

In: Energy Efficiency and New Approaches : Proceedings of "4th

International Building Physics Conference" : , 2009

Type: Conference paper published in book/proceeding

Abuku, Masaru; Janssen, Hans; Roels, Staf

An onset to whole-building hygrothermal modeling under wind-driven rain loads.

Presented at: Building Simulation 2009, 2009

In: Building Simulation 2009 : Proceedings of "11th International Building Performance Simulation Association Conference and Exhibition"

Type: Conference paper published in book/proceeding

Agerskov, Henning

The Fatigue Behavior of Steel Structures under Random Loading

Presented at: International Institute of Welding Annual Assembly.

Singapore, 2009

In: IIW Doc. XIII-2277-09 - Singapore : International Institute of Welding, 2009 (3-15 p.)

Type: Conference paper published in book/proceeding

Almegaard, Henrik

From stress trajectories to Michell structures

Presented at: Nordisk Tekniklærermøde 2009. DTU, 2009

In: Nordisk Tekniklærermøde 2009 : Forskning, Undervisning og Praksis - København : DTU Byg, 2009 (32-38 p.)

Type: Conference paper published in book/proceeding

Andersen, Rune Vinther; Toftum, Jørn; Olesen, Bjarne W.

Long term monitoring of window opening behaviour in Danish dwellings

Presented at: 26th Conference on Passive and Low Energy Architecture. Quebec City, Canada, 22-24 June 2009, 2009

In: Proceedings of the 26th Conference on Passive and Low Energy Architecture - PLEA2009 : Architecture, Energy and the Occupant's perspective / Editor: Demers, Claude ; Potvin, André : (490-494 p.)

Type: Conference paper published in book/proceeding

Andersen, Rune Vinther; Toftum, Jørn; Olesen, Bjarne W.

Simulation of the effects of window opening and heating set-point behaviour on indoor climate and building energy performance

Presented at: Healthy Buildings 2009. Syracuse, New York, USA, 2009

In: Proceedings of the 9th international conference - Healthy Buildings 2009: Type: Conference paper published in book/proceeding

Bekö, Gabriel; Nors, Fredrik; Toftum, Jørn; Clausen, Geo

Carbon dioxide concentrations and ventilation rates in 500 Danish homes: Indoor Environment and Children's Health (IECH) study

Presented at: Healthy Buildings 2009. Syracuse, NY, USA, 2009

In: Proceedings of Healthy Buildings 2009 ; CD, paper No.: 383 :

Type: Conference paper published in book/proceeding

Bekö, Gabriel; Fadeyi, Moshood Olawale; Clausen, Geo; Weschler, Charles J.

Sensory pollution from a conventional bag-type fiberglass ventilation filter and fiberglass bag filters containing various amounts of activated carbon

Presented at: Healthy Buildings 2009. Syracuse, NY, USA, 2009

In: Proceedings of Healthy Buildings 2009 ; CD, Paper No.: 358 :

Type: Conference paper published in book/proceeding

Bennitz, Anders; Schmidt, Jacob Wittrup; Täljsten, Björn

Failure modes of prestressed CFRP rods in a wedge anchored set-up

Presented at: ACIC, Advanced composites in construction. Edinburgh, 2009. In: Advanced composites in construction 2009 : Conference

proceedings ; Fourth :

Type: Conference paper published in book/proceeding

Bennitz, Anders; Schmidt, Jacob Wittrup; Täljsten, Björn

EXTERNAL PRESTRESSING OF RC T-BEAMS WITH CFRP TENDONS

Presented at: FRPRCS 2009, 2009

In: FRPRCS 9 : 9th international Symposium on fiber reinforced polymer reinforcement for concrete structures ; 9th : , 2009

Type: Conference paper published in book/proceeding

Bjerregaard Jensen, Lotte

The problem of scale in design-implement experiences in civil engineering

Presented at: CDIO Singapore 7-10 June 2009, 2009

In: CDIO Singapore 7-10 June 2009 : , 2009 (1-8 p.)

Type: Conference paper published in book/proceeding

Bolashikov, Zhecho Dimitrov; Nagano, H.; Melikov, Arsen Krikor;

Meyer, K.E.; Kato, S.

Control of the Free Convection Flow within the Breathing Zone by

Confluent Jets for Improved Performance of Personalized Ventilation:

Part 2 - Inhaled Air Quality

Presented at: Healthy Buildings 2009. Syracuse, September 13-19, 2009

In: Proceedings of Healthy Buildings 2009 : , 2009

Type: Conference paper published in book/proceeding

Bolashikov, Zhecho Dimitrov; Melikov, Arsen Krikor; Kranek, M.

Control of the free convection around occupant body by optimised furniture design

Presented at: International conference on air distribution in

Rooms - Roomvent. 24-27 May Busan, Korea, 2009

In: 11th International conference on air distribution in

Rooms - Roomvent 2009 :

Type: Conference paper published in book/proceeding

Bolashikov, Zhecho Dimitrov; Melikov, Arsen Krikor; Kranek, M.

Control of the free convection around a seated occupant for better

air quality performance of personalized ventilation

Presented at: International conference on air distribution in

Rooms - Roomvent 2009. 24-27 May 2009, Busan, Korea, 2009

In: 11th International conference on air distribution in Rooms -

Roomvent 2009 :

Type: Conference paper published in book/proceeding

Christensen, Jørgen Erik

Simulation of thermal indoor climate in buildings by using human

Projected Area Factors

Presented at: 4th International Building Physics Conference - IBPC.

Istanbul Technical University, Istanbul, Turkey, 2009

In: Simulation of thermal indoor climate in buildings by using human

Projected Area Factors :

Type: Conference paper published in book/proceeding

Clausen, Geo; Høst, Arne; Toftum, Jørn; Bekö, Gabriel; Weschler,

Charles J.; Callesen, Michael; Buhl, Susanne; Ladegaard, Mette

Bill; Langer, Sarka; Andersen, Birgitte; Sundell, Jan; Bornehag,

Carl-Gustaf; Sigsgaard, Torben

Indoor Environment and Children's Health (IECH) - An ongoing epidemiological investigation on the association between indoor environmental factors in homes and kindergartens and children's health and wellbeing

Presented at: Healthy Buildings 2009, 2009

In: Proceedings of Healthy Buildings 2009 - Syracuse, 2009

Type: Conference paper published in book/proceeding

Clausen, Geo; Nors, Fredrik; Nielsen, Thomas; Buhl, Susanne;

Ladegaard, Mette Bill; Callesen, Michael; Toftum, Jørn

Indoor environment and children's health in 151 Danish kindergartens

Presented at: Healthy Buildings 2009. Syracuse, 2009

In: Proceedings of Healthy Buildings : , 2009

Type: Conference paper published in book/proceeding

Dragsted, Janne; Furbo, Simon

Applying measured reflection from the ground to simulations of

thermal performance of solar collectors Presented at: Applying measured reflection from the ground to simulations of thermal performance of

solar collectors, 2009 In: Proceedings from ISES conference South Africa

2009 : , 2009 Type: Conference paper published in book/proceeding

Fan, Jianhua; Chen, Ziqian; Furbo, Simon; Perers, Bengt; Karlsson, Björn

EFFICIENCY AND LIFETIME OF SOLAR COLLECTORS FOR SOLAR HEATING PLANTS

Presented at: ISES Solar World Congress 2009. Johannesburg, South Africa, 2009

In: ISES Solar World Congress 2009 - Johannesburg, South Africa, 2009 (331-340 p.) Type: Conference paper published in book/proceeding

Fan, Jianhua; Furbo, Simon

THERMAL STRATIFICATION IN A HOT WATER TANK ESTABLISHED BY HEAT LOSS FROM THE TANK

Presented at: ISES Solar World Congress 2009. Johannesburg, South Africa, 2009

In: ISES Solar World Congress 2009 - Johannesburg, South Africa, 2009 (341-350 p.) Type: Conference paper published in book/proceeding

Fischer, Gregor; Lárusson, Lárus Helgi; Jönsson, Jeppe

Prefabricated floor and roof panels with engineered cementitious composites (ECC)

Presented at: ASCE Structures Congress. Austin, Texas, USA, 2009

In: ASCE Structures Congress : , 2009

Type: Conference paper published in book/proceeding

Frontczak, Monika Joanna; Wargocki, Pawel

The effects of non-environmental factors on comfort, a literature survey

Presented at: 9th International Conference & Exhibition Healthy Buildings 2009. Syracuse, NY USA, 2009

In: Proceedings of the 9th International Conference & Exhibition Healthy Buildings 2009 : , 2009

Type: Conference paper published in book/proceeding

Furbo, Simon; Chen, Ziqian; Fan, Jianhua; Schultz, Jørgen Munthe

Solar transmittances for glass covers with and without antireflection treatment under real climatic conditions

Presented at: ISES Solar World Congress 2009. Johannesburg, South Africa, 2009

In: ISES Solar World Congress 2009 Proceedings :

Type: Conference paper published in book/proceeding

Furbo, Simon; Fan, Jianhua; Thür, Alexander

Long term investigations of thermal performance and energy savings for a solar combi system

Presented at: ISES Solar World Congress 2009. Johannesburg, South Africa, 2009

In: ISES Solar World Congress 2009 Proceedings :

Type: Conference paper published in book/proceeding

Georgakis, Christos; Støttrup-Andersen, Ulrik; Johnsen, Marie; Nielsen, Mogens; Koss, Holger

Drag coefficients of lattice masts from full-scale wind-tunnel tests

Presented at: 5th European African Conference on Wind Engineering. Florence, Italy, 2009

In: 5th European African Conference on Wind Engineering : , 2009

Type: Conference paper published in book/proceeding

Georgakis, Christos; Koss, Holger; Ricciardelli, Francesco

Design Specifications for a Novel Climatic Wind Tunnel for the Testing of Structural Cables

Presented at: 8th International Symposium on Cable Dynamics. Paris, France, 2009

In: 8th International Symposium on Cable Dynamics : , 2009

Type: Conference paper published in book/proceeding

Gjelstrup, Henrik; Georgakis, Christos

AERODYNAMIC INSTABILITY OF A CYLINDER WITH THIN ICE ACCRETION

Presented at: International Symposium on Cable Dynamics. Paris, 2009

In: 8th International Symposium on Cable Dynamics : , 2009

Type: Conference paper published in book/proceeding

Gunnarsen, Lars; Logadóttir, Asta; Afshari, Alireza; Rode, Carsten; Glendorf, Rikke Møller

Humidity in air during and after humidifying incidents in three different houses

Presented at: Healthy Buildings 2009. Syracuse, NY, USA, 2009

In: Healthy Buildings 2009: Proceedings of the 9th International Healthy Buildings Conference and Exhibition : , 2009

Type: Conference paper published in book/proceeding

Haller, Michel; Streicher, Wolfgang; Andersen, Elsa; Furbo, Simon

Comparative analysis of thermal energy storage stratification efficiency : A new method combines advantages of previous approaches

Presented at: EffStock 2009 Proceedings, 2009

In: EffStock 2009 Proceedings : , 2009

Type: Conference paper published in book/proceeding

Halvonova, B.; Melikov, Arsen Krikor

Performance of "ductless" personalized ventilation in conjunction with displacement ventilation: impact of walking occupant

Presented at: Healthy Buildings. Syracuse, September 13-19, 2009

In: Proceedings of Healthy Buildings 2009 : , 2009

Type: Conference paper published in book/proceeding

Halvonova, B.; Melikov, Arsen Krikor

Impact of intake positioning height on performance of "ductless" personalized ventilation

Presented at: International conference on air distribution in Rooms - Roomvent 2009. 24-27 May 2008, Busan, Korea, 2009

In: 11th International conference on air distribution in Rooms - Roomvent 2009 : Paper ID: S0131. :

Type: Conference paper published in book/proceeding

Hansen, Christian Skodborg; Sas, Gabriel; Täljsten, Björn

FRP strengthening of RC walls with openings

Presented at: Advanced Composites in Construction 2009. Edinburgh, 2009

In: Advanced Composites in Construction 2009 : Conference Proceedings - 1 ed. - Chesterfield, Great Britain : NetComposites Limited, 2009 (202-213 p.) Type: Conference paper published in book/proceeding

Hansen, Christian Skodborg; Jensen, Peter Holmstrøm; Dyrrelund, Jens; Täljsten, Björn

Crack Propagation on ESE(T) Specimens Strengthened with CFRP Sheets

Presented at: Advanced Composites in Construction 2009. Edinburgh, 2009

In: Advanced Composites in Construction 2009 : Conference Proceedings - 1 ed. - Chesterfield, Great Britain : NetComposites Limited, 2009 (402-413 p.) Type: Conference paper published in book/proceeding

Hertz, Kristian Dahl

Advantages of super-light structures

Presented at: Nordic technical teachers meeting 2009. Copenhagen, 2009

In: Proceedings of Nordic Technology Teacher Meeting 2009: (45-52 p.)

Type: Conference paper published in book/proceeding

Iversen, Anne; Wille, Louise Finnerup; Nielsen, Toke Rammer; Svendsen, Svend

Simulated influence of the surrounding buildings on the daylight availability in the master plan and on the working plane

Presented at: Lux Europe 2009. Istanbul, 2009

In: Lux Europe 2009 : , 2009

Type: Conference paper published in book/proceeding

Janssen, Hans; Scheffler, Gregor Albrecht

Dynamic effects in porous media flow: exploratory modelling

Presented at: Dynamic effects in porous media flow: exploratory modelling. Istanbul, Turkey, 2009

In: Proceedings of "4th International Building Physics Conference" - Istanbul, Turkey, 2009 (17-24 p.)

Type: Conference paper published in book/proceeding

Janssen, Hans; Scheffler, Gregor Albrecht

Dynamic effects in porous media flow: exploratory modelling

Presented at: Energy Efficiency and New Approaches, 2009

In: Energy Efficiency and New Approaches : Proceedings of "4th International Building Physics Conference" : , 2009

Type: Conference paper published in book/proceeding

Janssen, Hans; Roels, Staf

Qualitative and quantitative assessment of interior moisture buffering

Presented at: Building Simulation 2009, 2009

In: Building Simulation 2009 : Proceedings of "11th International Building Performance Simulation Association Conference and Exhibition"

Type: Conference paper published in book/proceeding

Jørgensen, Anders Stuhr; Doré, Guy

Experimentation of several mitigation methods in Tasiujaq Airport to minimize the effects caused by the melting of permafrost

Presented at: Conference on Cold Regions Engineering. Duluth, Minnesota, United States, 2009

In: Cold Regions Engineering 2009 : Cold Regions Impacts on Research, Design, and Construction - Reston, Virginia : American Society of Civil Engineers, 2009 (171-182 p.)
Type: Conference paper published in book/proceeding

Jönsson, Jeppe; Andreassen, Michael Joachim

Distortional Modes of Thin-Walled Beams
Presented at: ESMC2009. Instituto Superior Técnico, Lisbon, Portugal, 2009 In: Proceedings of the 7th EUROMECH Solid Mechanics Conference - Mini-Symposia / Editor: Ambrósio, Jorge ; Silva, Miguel T. - 1. ed. - Portugal : APMTAC - Portuguese Association for Theoretical, Applied and Computational Mechanics, Laboratório Nacional de Engenharia Civil, Av. do Brasil, 101, 1700-066 Lisboa, 2009
Type: Conference paper published in book/proceeding

Kolarik, Jakub; Olesen, Bjarne W.; Toftum, Jørn

Simulated performance of the Thermo Active Building System (TABS) with respect to the provided thermal comfort and primary energy use
Presented at: Healthy Buildings 2009. Syracuse, NY, USA, 2009
In: Proceedings of Healthy Buildings 2009 ; CD, paper No.: 309 :
Type: Conference paper published in book/proceeding

Lárusson, Lárus Helgi; Fischer, Gregor; Jönsson, Jeppe

Mechanical interaction of Engineered Cementitious Composite (ECC) reinforced with Fiber Reinforced Polymer (FRP) rebar in tensile loading.
Presented at: Advanced Concrete Materials. Stellenbosch, South Africa, 2009
In: ADVANCES IN CEMENT-BASED MATERIALS - Leiden : CRC Press/Balkema, 2010 (83-90 p.)
Type: Conference paper published in book/proceeding

Lárusson, Lárus Helgi; Fischer, Gregor; Jönsson, Jeppe

Mechanical Interaction of ECC with Fiber Reinforced Polymer (FRP) rebar in tensile loading
Presented at: Advanced Concrete Materials Conference. Stellenbosch, Republic of South Africa, 2009
In: Advanced Concrete Materials Conference : , 2009
Type: Conference paper published in book/proceeding

Lee, Hosin; Kim, Yongjoo; Geisler, Nivi; Jørgensen, Anders Stuhr; Villumsen, Arne; Cheon, S.; Pyun, J.

Building Asphalt Pavement with SBS-based Compound Added Using a Dry Process in Greenland
Presented at: International Conference on Maintenance and Rehabilitation of Pavements and Technological Control. Torino, Italy, 2009
In: Proceedings for the 6th International Conference on Maintenance and Rehabilitation of Pavements and Technological Control : (493-498 p.)
Type: Conference paper published in book/proceeding

Li, Qiaoyan; Cheong Kok Wai, David; Sun, Weimeng; Melikov, Arsen Krikor

Assessment of Thermal comfort with the novel Enhanced Displacement Ventilation System in the tropics
Presented at: Healthy Buildings 2009. Syracuse, September 13-19, 2009
In: Healthy Buildings 2009 : , 2009
Type: Conference paper published in book/proceeding

Li, R.; Sekhar, C.; Melikov, Arsen Krikor

Air movement preference and acceptability with personalized ventilation in conjunction with under-floor air supply
Presented at: Healthy Buildings. Syracuse, September 13-19 2009, 2009
In: Proceedings of Healthy Buildings 2009 : , 2009
Type: Conference paper published in book/proceeding

Li, R., R.; Sekhar, C.; Melikov, Arsen Krikor

Human response to the thermal environment served by personalized ventilation combined with under-floor air distribution system
Presented at: 11th International conference on air distribution in Rooms - Roomvent. 24-27 May 2009, Busan, Korea, 2009
In: Proceedings of the 11th International conference on air distribution in Rooms - Roomvent 2009, , 2009
Type: Conference paper published in book/proceeding

Li, Victor; Fischer, Gregor; Lepech, Michael

Shotcreting with ECC
Presented at: Spritzbeton-Tagung. Alpbach, Austria, 2009
In: Spritzbeton-Tagung Alpbach / Editor: Kusterle, Wolfgang :
Type: Conference paper published in book/proceeding

Melikov, Arsen Krikor; Dzhartov, V.

Control of the free convection flow around human body by radiant cooling
Presented at: Healthy Buildings. Syracuse, September 13-19, 2009
In: Proceedings of Healthy Buildings 2009 : paper 620. : , 2009
Type: Conference paper published in book/proceeding

Melikov, Arsen Krikor; Brand, M.; Fang, Lei

Reduced exposure to coughed air by advanced air distribution
Presented at: International Conference on Air Distribution in Rooms - Roomvent 2009, . May 24-27, Busan, Korea, 2009
In: 11th International Conference on Air Distribution in Rooms - Roomvent 2009 : MO-S1A, paper S0297 : , 2009
Type: Conference paper published in book/proceeding

Meyer, Niels I

Strategies for mitigation of global warming
Presented at: Energy Reform Group Meeting in Salzburg, Austria, September 2009, 2009
In: Energy Reform Group - Freie Universität Berlin, 2009, 2009
Type: Conference paper published in book/proceeding

Meyer, Niels I

Strategies for Sustainable Energy Development
Presented at: 10th European IAEE conference, September 2009, Vienna, Austria, 2009
In: 10th European IAEE conference on "Energy, Policies and Technologies for Sustainable Economics : , 2009
Type: Conference paper published in book/proceeding

Mortensen, Dorthe Kragtig; Nielsen, Toke Rammer; Svendsen, Svend; Christoffersen, Lars D.

Rational use of supply air in residential buildings
Presented at: Healthy Buildings, 2009
In: Healthy Buildings (usb stick) : , 2009
Type: Conference paper published in book/proceeding

Mougaard, Jens Falkenskov; Poulsen, Peter Noe; Nielsen, Leif Otto

A Consistent Partly and Fully Cracked XFEM Element for Modelling Fracture in Concrete Structures
Presented at: First International Conference on Computational Technologies in Concrete Structures, 2009
In: Computational Technologies in Concrete Structures :
Type: Conference paper published in book/proceeding

Nicolai, Andreas; Scheffler, Gregor Albrecht

Moisture storage and transport properties influenced by salt crystallization inside porous materials
Presented at: Moisture storage and transport properties influenced by salt crystallization inside porous materials. Istanbul, Turkey, 2009
In: Proceedings of the "4th International Building Physics Conference" - Istanbul, Turkey, 2009 (69-74 p.)
Type: Conference paper published in book/proceeding

Nielsen, Toke Rammer; Nørgaard, Jørgen

Household classification according to electricity consumption
Presented at: eceee 2009 Summer Study. La Colle sur Loup, France, 2009
In: eceee 2009 Summer Study proceedings ; Vol. 2 / Editor: Broussous, Christel ; Jover, Corisande - Kph Trycksaksbolaget AB, Uppsala/Upplands Väsby, Sweden, 2009 (1017-1026 p.)
Type: Conference paper published in book/proceeding

Olesen, Bjarne W.

Criteria used in international standards for specifying the required ventilation rates
Presented at: International Conference on Air Distribution in Rooms. Busan, Korea, 2009
In: 11 International Conference on Air Distribution in Rooms : Roomvent 2009 : , 2009
Type: Conference paper published in book/proceeding

Ottosen, Lisbeth M.; Ferreira, Celia; Christensen, Iben Vernegren

Electrokinetic desalination of glazed ceramic tiles : Preliminary results
Presented at: International Seminar Conservation of glazed ceramic tiles. Lisbon, Portugal, 2009
In: International Seminar Conservation of glazed ceramic tiles : research and practice ; CD : , 2009
Type: Conference paper published in book/proceeding

Ottosen, Lisbeth M.; Castellote, Marta

Electrochemical desalination of concrete and electrochemical soil remediation - Differences and similarities

Presented at: Concrete Solutions. Padova, Italy, 2009

In: Concrete solutions / Editor: Grantham, Michael ; Majorana, Carmelo ; Salomoni, Valentina : CRC Press, 2009 (25-28 p.)

Type: Conference paper published in book/proceeding

Ottosen, Lisbeth M.; Jensen, Pernille Erland; Kirkelund, Gunvor Marie; Hansen, Henrik K.

Electrokinetic remediation of heavy metal polluted soil : Recent developments towards a continuous process

Presented at: 3rd International Contaminated Site Remediation Conference. Adelaide, Australia, 2009

In: CRC Care 2009, 3rd International Contaminated Site Remediation Conference: Program and Proceedings - CRC Care Pty Ltd, 2009 (112-113 p.) Type: Conference paper published in book/proceeding

Paegle, Ieva; Fischer, Gregor

Shear behavior of reinforced Engineered Cementitious Composites (ECC) beams

Presented at: Advanced concrete materials. Stellenbosch, South Africa, 2009

In: Advances in cement-based materials / Editor: van Zijl, Gideon Pieter Adriaan Greeff ; Boshoff, William Peter - Leiden : CRC Press, 2010 (75-82 p.) Type: Conference paper published in book/proceeding

Paegle, Ieva; Fischer, Gregor

Shear behavior of reinforced Engineered Cementitious Composite (ECC) Beams

Presented at: Advanced Concrete Materials Conference. Stellenbosch, Republic of South Africa, 2009

In: Advanced Concrete Materials Conference :

Type: Conference paper published in book/proceeding

Pease, Bradley Justin; Couch, Jon; Geiker, Mette Rica; Stang, Henrik; Weiss, Jason

Assessing the Portion of the Crack Length Contributing to Water Sorption in Concrete Using X-ray Absorption

Presented at: ConcreteLife'09. Haifa, Israel, 2009

In: ConcreteLife'09: Second International RILEM Workshop on Concrete Durability and Service Life Planning :

Type: Conference paper published in book/proceeding

Perers, Bengt; Furbo, Simon; Andersen, Elsa; Fan, Jianhua

Solar Electric Heating for the future Energy System

Presented at: ISES Solar World Conference 2009. Johannesburg South Africa, 2009

In: Solar Electric Heating for the future Energy System :

Type: Conference paper published in book/proceeding

Pihl, Mads; Pointing, David Scott; Vladyková, Petra

Democratic Sustainability – Lighthouse 2.0

Presented at: HVAC Cold Climate 2009, 2009

In: HVAC Cold Climate 2009 : , 2009

Type: Conference paper published in book/proceeding

Rode, Carsten; Grau, Karl

Implementation of Models for Building Envelope Air Flow Fields in a Whole Building Hygrothermal Simulation Tool

Presented at: International Building Physics Conference. Istanbul, Turkey, 2009

In: Energy Efficiency and New Approaches : Proceedings of the Fourth International Building Physics Conference / Editor: Bayazit, N.T. ; Manioglou, G. ; Oral, G.K. ; Yilmaz, Z. - Istanbul, Turkey : Istanbul Technical University, 2009 (701-708 p.)

Type: Conference paper published in book/proceeding

Rode, Carsten; Woloszyn, Monika

Common Exercises in Whole Building HAM Modelling

Presented at: Building Simulation 2009. Glasgow, UK, 2009

In: Building Simulation 2009 : Proceedings of the 11th International Building Performance Simulation Association Conference / Editor: Strachan, Paul A. ; Kelly, Nick J. ; Kummert, Michaël - Glasgow, UK : Energy Systems Research Unit, University of Strathclyde, 2009 (346-353 p.) Type: Conference paper published in book/proceeding

Rörig-Dalgaard, Inge

Electrochemical repair

Presented at: Concrete Solutions. Padua, Italy, 2009

In: Chloride transport in masonry (brick and cement mortar) in isolated and combined systems : , 2009 (29-33 p.)

Type: Conference paper published in book/proceeding

Rörig-Dalgaard, Inge

Desalination for preservation of murals by electromigration

and regulated climate

Presented at: Desalination for preservation of murals by electromigration and regulated climate. Tallinn, Estonia, 2009

In: Structural Studies, Repairs and Maintenance of Heritage Architecture XI : , 2009 (71-82 p.)

Type: Conference paper published in book/proceeding

Scheffler, Gregor Albrecht; Plagge, Rudolf

Evidence on dynamic effects in the water content - water potential relation of building materials

Presented at: Evidence on dynamic effects in the water content - water potential relation of building materials. Istanbul, Turkey, 2009

In: Proceedings of "4th International Building Physics Conference" - Istanbul, Turkey, 2009 (41-48 p.)

Type: Conference paper published in book/proceeding

Schellen, Lisje; Toftum, Jørn

Thermal comfort, physiological responses and performance of elderly during exposure to a moderate temperature drift

Presented at: Healthy Buildings 2009. Syracuse, New York, 2009

In: Proc. of Healthy Buildings 2009 : , 2009 (paper 249 p.)

Type: Conference paper published in book/proceeding

Schiavon, S.; Melikov, Arsen Krikor

Evaluation of the Cooling Fan Efficiency index for a desk fan and a computer fan

Presented at: International conference on air distribution in Rooms – Roomvent 2009. 24-27 May 2009, Busan, Korea, 2009

In: Proceedings of the 11th International conference on air distribution in Rooms – Roomvent 2009 : , 2009

Type: Conference paper published in book/proceeding

Simone, Angela; Olesen, Bjarne W.

An experimental study of thermal comfort at different combinations of air and mean radiant temperature

Presented at: An experimental study of thermal comfort at different combinations of air and mean radiant temperature. Syracuse, N.Y., 2009

In: Proceedings of Healthy Buildings 2009 : , 2009 (paper 842 p.)

Type: Conference paper published in book/proceeding

Skwarczynski, M. A.; Melikov, Arsen Krikor; Kaczmarczyk, J.; Lyubanova, V.

Preferred velocities with individually controlled facially applied air movement at high humidity

Presented at: Healthy Buildings 2009., Syracuse, September 13-19, 2009

In: Healthy Buildings 2009 : (paper 624 p.)

Type: Conference paper published in book/proceeding

Solgaard, Anders Ole Stubbe; Michel, Alexander

Cracking of Concrete due to Corrosion of Reinforcement – Investigation of the Size Effect of the Reinforcement

Presented at: 7th International Conference on Fracture Mechanics of Concrete and Concrete Structures, 2010

In: Proceedings of the 7th International Conference on Fracture Mechanics of Concrete and Concrete Structures :

Type: Conference paper published in book/proceeding

Strøm-Tejsten, Peter; Wyon, David Peter; Zukowska, Daria; Jama, Agnieszka

Finger temperature as a predictor of thermal comfort for sedentary passengers in a simulated aircraft cabin

Presented at: The 9th International Healthy Buildings Conference and Exhibition. Syracuse, NY, USA, 2009

In: Proceedings of the 9th International Healthy Buildings Conference and Exhibition ; Paper 382 : , 2009

Type: Conference paper published in book/proceeding

Sun, Weimeng; K.W. Cheong, David; Melikov, Arsen Krikor

Subjective assessment of thermal comfort in rooms served by the novel enhanced displacement ventilation system with different airflow discharge angles

Presented at: Healthy Buildings 2009. Syracuse, September 13-19 2009, 2009 In: Healthy Buildings 2009 : (paper 9 p.)

Type: Conference paper published in book/proceeding

Toftum, Jørn; Clausen, Geo; Callesen, Michael; Bekö, Gabriel; Wechsler, Charles J.; Langer, Sarka; Andersen, Birgitte; Høst, Arne

A case-base study of residential IEQ related risk factors and parental reports of asthma and allergy among 500 Danish children – IECH

Presented at: Healthy Buildings 2009. Syracuse, New York, 2009

In: Proc. of Healthy Buildings : , 2009 (paper 617 p.)

Type: Conference paper published in book/proceeding

Toftum, Jørn; Clausen, Geo; Bekö, Gabriel; Callesen, Michael; Sundell, Jan; Bornehag, Carl-Gustaf; Høst, Arne

A questionnaire survey on dwelling characteristics and the prevalence of asthma and allergy among Danish children – IECH
Presented at: Healthy Buildings 2009. Syracuse, New York, 2009
In: Proc. of Healthy Buildings 2009 : , 2009 (paper 613 p.)
Type: Conference paper published in book/proceeding

Toftum, Jørn; Kolarik, Jakub; Belkowska, Dorota; Olesen, Bjarne W.

Influence on occupant responses of behavioral modification of clothing insulation in non-steady thermal environments
Presented at: Healthy Buildings 2009. Syracuse, New York, 2009
In: Proc. of Healthy buildings 2009 : , 2009 (paper 164 p.)
Type: Conference paper published in book/proceeding

Täljsten, Björn; Arifovic, Fedja

Anchorage Failure of RC beams strengthened with FRP at the bottom face
Presented at: 2. International Conference on Concrete Repair, Rehabilitation and Retrofitting (ICRRR2008). Cape Town South Africa, 2008
In: Concrete Repair Rehabilitation and Retrofitting : CRC Press, 2009
Type: Conference paper published in book/proceeding

Vereecken, Evy; Roels, Staf; Janssen, Hans

In situ determination of the moisture buffering potential of room enclosures
Presented at: Building Simulation 2009, 2009
In: Building Simulation 2009 : Proceedings of 11th International Building Performance Simulation Association Conference and Exhibition
Type: Conference paper published in book/proceeding

Vigild, Martin Etchells; Willumsen, Louise Engberg; Borchersen, Egil; Clement, Karsten; Bjerregaard Jensen, Lotte; Kjærgaard, Claus; Klit, Peder; Sparsø, Jens

COMPARISON AND CLASSIFICATION OF DESIGN BUILD PROJECTS IN DIFFERENT ENGINEERING BACHELOR PROGRAMS
Presented at: Proceedings of the 5th International CDIO Conference, Singapore Polytechnic, Singapore, June 7 - 10, 2009. Singapore, 2009
In: COMPARISON AND CLASSIFICATION OF DESIGN BUILD PROJECTS IN DIFFERENT ENGINEERING BACHELOR PROGRAMS - Singapore : Proceedings of the 5th International CDIO Conference, Singapore Polytechnic, Singapore, June 7 - 10, 2009, 2009 (1-7 p.) Type: Conference paper published in book/proceeding

Villumsen, Arne; Bjerregaard Jensen, Lotte

Green cottages of tomorrow
Presented at: Tourist cottages and climate change. Sisimiut, 2009
In: tourist cottages and climate change - Lyngby : Center for arktisk teknologi, 2009 (37-40 p.)
Type: Conference paper published in book/proceeding

Vladyková, Petra; Rode, Carsten

Renovation of standardized typical single family house to Passive House Standards by means of simulation
Presented at: HVAC Cold Climate 2009, 2009
In: HVAC Cold Climate 2009 : , 2009
Type: Conference paper published in book/proceeding

Woloszyn, Monika; Rode, Carsten; Kalagasidis, Angela S.; Janssens, Arnold; De Paepe, Michel

From EMPD to CFD – overview of different approaches for Heat Air and Moisture modeling in IEA Annex 41.
Presented at: ASHRAE Annual Meeting. Louisville, Kentucky, USA, 2009
In: ASHRAE Transactions : Louisville 2009 ; vol. 115, pt. 2 - Atlanta : ASHRAE, American Society of Heating, Refrigerating and Air-Conditioning Engineers, 2009
Type: Conference paper published in book/proceeding

Yang, B.; Sekhar, C.; Melikov, Arsen Krikor

Subjective assessments of air movement for ceiling mounted personalized ventilation system
Presented at: International conference on air distribution in Rooms – Roomvent. 24-27 May 2009, Busan, Korea, 2009
In: Proceedings of the 11th International conference on air distribution in Rooms – Roomvent 2009 :
Type: Conference paper published in book/proceeding

Yang, B.; Sekhar, C.; Melikov, Arsen Krikor

Cooling effect of ceiling mounted personalized ventilation system
Presented at: International conference on air distribution in Rooms – Roomvent 2009. 24-27 May 2009, Busan, Korea, 2009
In: Proceedings of the 11th International conference on air distribution

in Rooms – Roomvent 2009 :

Type: Conference paper published in book/proceeding

Yang, Bin; Sekhar, C.; Melikov, Arsen Krikor

Subjective assessments of indoor environmental quality for ceiling mounted personalized ventilation system
Presented at: Healthy Buildings 2009. Syracuse, September 13-19 2009, 2009
In: Healthy Buildings 2009 : (paper 791 p.)
Type: Conference paper published in book/proceeding

Yang, Bin; Sekhar, C.; Melikov, Arsen Krikor

Human perception relation between thermal sensation and air movement for ceiling mounted personalized ventilation system
Presented at: Healthy Buildings 2009. Syracuse, September 13-19 2009, 2009
In: Healthy Buildings 2009 : , 2009 (paper 794 p.)
Type: Conference paper published in book/proceeding

Zukowska, Daria; Popiolek, Zbigniew J.; Melikov, Arsen Krikor

Prediction of the volume flux of the thermal plume above a sitting person
Presented at: The 9th International Healthy Building Conference and Exhibition 2009. Syracuse, NY, USA, 2009
In: Proceedings of the 9th International Healthy Buildings Conference and Exhibition 2009 - Syracuse, NY, USA, 2009 (Paper 384 p.)
Type: Conference paper published in book/proceeding

Reports

Almegaard, Henrik

Nordisk Tekniklærermøde 2009 : Forskning, Undervisning og Praksis. - København : DTU Byg, 2009 (p. 112)
In: BTG Rapport ; R-206 Type: Report

Arnbjerg-Nielsen, Karsten; Henze, Mogens; Hededal, Ole

Infrastruktur og klimaændringer : Workshop afholdt som led i workshopserien DTU Climate Change Technologies 1. september. - Kgs. Lyngby, 2009 (p. 12) Type: Report

Chen, Ziqian; Fan, Jianhua; Perers, Bengt; Furbo, Simon

Levetid for solfangere i solvarmecentraler - DTU Byg, 2009
Type: Report

Iversen, Anne; Laustsen, Jacob Birck; Svendsen, Svend; Traberg-Borup, Steen; Johnsen, Kjeld

Udvikling af nye typer solafskærmningssystemer baseret på dagslysdirigerende solafskærmende glaslameller. - Kgs. Lyngby, 2009
Type: Report

Kragh, Jesper; Svendsen, Svend

Udvikling af nye typer energivinduer af kompositmaterialer : Designforslag til profilsystemer
In: BYG Rapport ; R-203 Type: Report

Kragh, Jesper; Pedersen, Frank; Svendsen, Svend

Weather test reference years of Greenland
In: BYG Sagsrapport ; SR 09-05 Type: Report

Møller, Jacob Steen; Ærø, Thorkild; Jensen, Bjørn Lykke

Byggeerhvervets forskningskatalog. - Denmark, 2009 Type: Report

Nielsen, Niels Axel; Larsen, Hans Hvidtfeldt; Halsnæs, Kirsten; Møller, Jacob Steen; Hansen, Jakob Fritz; Strand, Iben Frøkjær

DTU Climate Change Technologies : Recommendations on accelerated development and deployment of climate change technologies. - 1 ed. - Kgs. Lyngby, Denmark : Technical University of Denmark (DTU), 2009 (p. 64) Type: Report

Nielsen, Toke Rammer; Drivsholm, Christian; Hansen, Mads Peter Rudolph; Kragh, Jesper

Behovstyret ventilation til enfamiliehuse. - Kgs. Lyngby : DTU Byg, Danmarks Tekniske Universitet, 2009
In: DTU Byg-Rapport ; R-212 Type: Report

Schjær-Jacobsen, Jørgen

Energy-efficient cooking : The EffiCooker
In: BYG Rapport ; R-215 Type: Report

Simone, Angela; Rode, Carsten

Temperature distribution in Risø Flexhouse Room 3 with different heating control principles. - Lyngby, 2009 (p. 51) Type: Report

Simone, Angela; Rode, Carsten

Temperature distribution in Risø Flexhouse Room 3 with different heating control principles
In: BYG Sagsrapport ; SRc 09-07 Type: Report

Strand, Jakob; Bossi, Rossana; Dahllöf, Ingela; Jensen, Christian A.; Simonsen, Vibeke; Tairova, Zhanna; Tomkiewicz, Jonna

Dioxin og biologisk effektmonitoring i ålekvalbe i kystnære danske farvande - Danmarks Miljøundersøgelser, Aarhus Universitet, 2009
In: Faglig rapport fra DMU ; 743 Type: Report

Tommerup, Henrik M.; Furbo, Simon; Olesen, Bjarne W.; Heislerberg, Per; Østergaard Jensen, Søren; Holm Christiansen, Christian; Johnsen, Kjeld

Strategi for udvikling af integrerede lavenergiløsninger til nye bygnin- ger. - 2. udgave ed. - Lyngby, 2009 (p. 139) Type: Report

Tommerup, Henrik M.; Vanhoutteghem, Lies; Gustavsson, Leif; Mahapatra, Krushna; Haavik, Trond; Paiho, Satu; Ala-Juusela, Mia

Existing Sustainable Renovation Concepts, 2009 (p. 33) Type: Report

Vladyková, Petra; Borchersen, Egil; Rode, Carsten; Furbo, Simon

Low-energy house in Sisimiut : Annual report of Low-energy house performance July 2008 to June 2009, 2009 Type: Report



Astrup, Thomas

Numerical modelling of deformations in wood, - A FEM approach with focus on load and moisture related phenomena. - Kgs. Lyngby, Denmark : Technical University of Denmark (DTU), 2009
Type: PhD Thesis

Jensen, Kasper Lyngge

Development of a model to calculate the economic implications of improving the indoor climate. - Kgs. Lyngby, Denmark : Technical University of Denmark (DTU), 200902 (p. 133)
Type: PhD Thesis

Jørgensen, Anders Stuhr

Assessment of three mitigation techniques for permafrost protection : Roads and airfields in the Arctic. - Kgs. Lyngby, Denmark : Technical University of Denmark (DTU), 200903 (p. 105)
Type: PhD Thesis

Küter, Andre

Management of Reinforcement Corrosion : A Thermodynamic Approach. - Kgs. Lyngby, Denmark : Technical University of Denmark (DTU), 2009 (p. 302) Type: PhD Thesis

Nygaard, Peter Vagn

Non-destructive electrochemical monitoring of reinforcement corrosion. - Kgs. Lyngby, Denmark : Technical University of Denmark (DTU), 2008 (p. 287) Type: PhD Thesis

Rörig-Dalgaard, Inge

Preservation of murals with electrokinetic - with focus on desalination of single bricks, 200905 (p. 172) Type: PhD Thesis

Steskens, Paul Wilhelmus Maria Hermanus

Modeling of the Hygrothermal Interactions between the Indoor

Environment and the Building Envelope. - Kgs. Lyngby, Denmark : Technical University of Denmark (DTU), 2009 (p. 146)
Type: PhD Thesis

Jens Henrik Nielsen

Tempered Glass – Bolted Connections and Related Problems. – Kgs. Lyngby, Denmark : Technical University of Denmark (DTU), 2009 (p. 190)
Type: PhD Thesis



Roth, Jannick Karsten

Indoor Environment in Homes and Childrens' Health
Jørn Toftum, Geo Clausen

Madsen, Christian Mundbjerg

Jordankres virkemåde
Anette Susanne Krogsbøll

Amorós Trias, Xavier

Comparative Study between Danish and Spanish Fire Codes
Anne Dederichs

Larusdóttir, Aldis Run

Evacuation Process of Daycare Centers for Children 0-6 years
Anne Dederichs

García, Cristina

Opvarmning af turisthytter i Arktis
Arne Villumsen

Larsen, Heidi Skytte

Forundersøgelse for anlæggelse af svømmehal i fjeld
Arne Villumsen & Thomas Ingeman-Nielsen

Kibenich, Brian

Vejbygning i Arktis
Arne Villumsen, Anders Stuhr Jørgensen

Posselt, Jean-Pierre

Vejkonstruktion i Arktis
Arne Villumsen, Anders Stuhr Jørgensen, Thomas Ingeman-Nielsen

Goberna, Miguel

Energiforsyning til en arktisk turisthytte
Arne Villumsen, Esben Larsen

Spilak, Michal

Methods for Control of Personalized Ventilation Flows
Arsen Krikor Melikov

Zabecky, Josef

Improved Comfort and Performance with Personalized Ventilation
Arsen Krikor Melikov

Dalla Rosa, Alessandro

Eksperimentel undersøgelse af luftfordeling i et opvarmet/kølet rum
Bjarne W. Olesen

Zarpellon, Stefano

Experimental Study of Air Flow Patterns in Space with Radiant and Convective Heating/Cooling Systems
Bjarne W. Olesen

Dyrelund, Jens Kristian

CFRP Strengthening of Fatigue Cracks in Old Steel Structures
Björn Täljsten, Christian Skodborg Hansen

Jensen, Peter Holmstrøm

CFRP Strengthening of Fatigue Cracks in Old Steel Structures
Björn Täljsten, Christian Skodborg Hansen

- Gíslason, Finnur**
Anchorage of CFRP Tendons
Björn Täljsten, Jacob Wittrup Schmidt
- Magnússon, Guðjón**
Anchorage of CFRP Tendons
Björn Täljsten, Jacob Wittrup Schmidt
- Lyng, Nadja Lynge**
Energireovering af skoler
Carsten Rode, Geo Clausen, Jørn Toftum
- Oesten, Pimmie**
Energireovering af skoler
Carsten Rode, Geo Clausen, Jørn Toftum
- Nielsen, Nick**
Højhusbyggeri med stål i Grønland
Egil Borchersen, Flemming Vestergaard
- Bendotti, Andrea**
Heat Storage with Inlet Stratifiers
Elsa Andersen, Simon Furbo
- Kónyová, Gabriela**
Investigations of Marketed Solar Heating Systems
Elsa Andersen, Simon Furbo
- Pedersen, Anne**
Investigations of Marketed Solar Heating Systems
Elsa Andersen, Simon Furbo
- Olesen, Michael**
Anvendelse af 4D-modellering som værktøj i udførelsesfasen
Flemming Vestergaard
- Bak, Helle Juul**
Bygnings informationsmodellering og FM
Flemming Vestergaard, Per Anker Jensen
- Johansen, Silas**
Forskydningspåvirkede PVA-ECC og armerede betonbjælker
Gregor Fischer
- Svare, Peter Albrecht**
Forskydningspåvirkede PVA-ECC og armerede betonbjælker
Gregor Fischer
- Kroghsbo, Kristian Kai**
Højhuse i Ørestaden
Henning Agerskov
- Sass, Michael Holtemann**
Stability of Brackets and Stiffeners in Steel Structures
Henning Agerskov
- Lund-Hansen, Tine**
Vidensystem vedrørende energireovering af enfamiliehuse
Henrik M. Tommerup, Svend Svendsen
- Sørensen, Louise Hedelund**
Vidensystem vedrørende energireovering af enfamiliehuse
Henrik M. Tommerup, Svend Svendsen
- Petersen, Rune Bødker**
Brudmekanisk analyse af armeret beton
Henrik Stang
- Spangenberg, Jon**
Numerical Modelling of Crack Propagation in Reinforced Concrete Beams
Henrik Stang
- Johansen, Marie**
Vindlast på gittermaste
Holger Koss, Christos Georgakis
- Kleissl, Kenneth**
Vibration Control of Bridge Cables
Holger Koss, Christos Georgakis
- Ahmetspahic, Peca**
Designmodeller for Skandek-elementer
Jeppe Jönsson
- Cepic, Adis**
Designmodeller for Skandek-elementer
Jeppe Jönsson
- Andersen, Rune Kjærgaard**
Pedestrian-Induced Vibrations - Human-Human Interaction
Jeppe Jönsson, Christos Georgakis
- Jørgensen, Nina Gall**
Interaction mellem mennesker og konstruktioner. Fodgængers indflydelse på gangbroers dynamiske egenskaber
Jeppe Jönsson, Christos Georgakis
- Matteoni, Giulia**
Pedestrian-Induced Vibrations of Footbridges
Jeppe Jönsson, Christos Georgakis
- Frederiksen, Ulla Ib**
Comparison of Facetted and Smooth Shells
Jeppe Jönsson, Henrik Almegaard
- Pinto, Ricardo Jorge**
Non-linea Behavior of Facetted Shells
Jeppe Jönsson, Henrik Almegaard
- Ankergræn, Ulrik Mark**
Glaskonstruktion udsat for brand
Jeppe Jönsson, Kristian Dahl Hertz, Henrik Stang
- Bak-Jensen, Anders Thyge**
Glaskonstruktion udsat for brand
Jeppe Jönsson, Kristian Dahl Hertz, Henrik Stang
- Madsen, Anders**
Cracks in Concrete under Repetitive Load
John Forbes Olesen, Henrik Stang, Peter Noe Poulsen
- Ehsani, Elnaz**
Indoor Environment in Homes and Childrens' Health
Jørn Toftum, Geo Clausen
- Kristiansen, Mads Prange**
Papirbaserede byggesten til lavprisbyggeri i Udviklingslande
Kurt Kielsgaard Hansen
- Clemente, Maria Grazia**
Experimental Analysis of Chilled Radiant Panels coupled with Displacement Ventilation: Indoor Climatic Quality and Energy Performance
Lei Fang, Bjarne W. Olesen
- Ekstrand, John Peter**
SCC-gulve - skader opstået i den plastiske fase
Mette Rica Geiker
- Andersen, Martin Jørgen**
Bæredygtighed ved eksisterende boligbyggeri
Morten Elle, Jørn Toftum
- Gunnarsson, Gunnar Arnar**
Rock Mass Characterisation and Reinforcement Strategies for Tunnels in Iceland
Niels Nielsen Foged
- Arngrimsson, Hallgrímur Örn**
Tunneling in Acid, Altered and Sedimentary Rock in Iceland
Niels Nielsen Foged
- Gunnarsson, Torri Björn**
Tunneling in Acid, Altered and Sedimentary Rock in Iceland
Niels Nielsen Foged
- Larsen, Svend Pilgaard**
Sprækket kalks styrke og deformationsegenskaber
Niels Nielsen Foged
- Klinkvort, Rasmus Tofte**
Tværbelastet enkeltpæl - centrifuge og numerisk modellering
Ole Hededal

Lamhauge, Dia

Æ10 og akselvægtspektraet
Ole Hededal

Christiansen, Asmus Skar

Effect of Using Different Approaches for Determining Design Overlay
Thicknesses in Mechanistic Analysis of Flexible Pavements
Ole Hededal

Rabstajn, Artur

Metoder til at måle den oplevede luftkvalitet
Pawel Wargocki

Dalewski, Mariusz

Termisk komfort og produktivitet
Pawel Wargocki

Kragh-Poulsen, Jens-Christian

Forskydningsbæreevnen af fiberarmerede betonbjælker
Per Goltermann

Steenberg, Michael Nellemann

Design af svømmehal
Per Oluf H Kjærbye, Anja Margrethe Bache

Blom, Ivan

Stort solvarmeanlæg til Aalstruphus
Simon Furbo, Jianhua Fan

Trier, Daniel

Styringsstrategi for solvarmecentraler
Simon Furbo, Jianhua Fan

Friehling, Dorte

Metode til planlægning af helhedsorienteret energigenerering
Svend Svendsen

Lauritsen, Diana

Metode til planlægning af helhedsorienteret energigenerering
Svend Svendsen

Thielemans, Tine

Method for Integrated Design of Retrofitting of Existing Buildings to
Low Energy Level
Svend Svendsen

Vanhoutteghem, Lies

Method for Integrated Design of Retrofitting of Existing Buildings to
Low Energy Level
Svend Svendsen

Þórðardóttir, Kristín Ósk

Design and Control of LED-based Lighting System for Office Buildings
Svend Svendsen

Acheimastos, Stavros

Design of Energy Renovation of Apartment Blocks
Svend Svendsen

Asmussen, Thorbjørn Færing

Videreudvikling af program til analyse af vinduesløsninger
Svend Svendsen

Christensen, Maja Grud

Calculation of Energy Performance of Skylights and Development of
New Solutions
Svend Svendsen

Pedersen, Ulrik

Visuel komfort i arbejdsrum med fokus på kontrastforhold
Svend Svendsen

Terkildsen, Søren

Udvikling af ventilationsanlæg med lavt elforbrug
Svend Svendsen

Boroujerdi Rad, Mohammad Reza

Analyse og udvikling af delløsninger til lavernergihuse
Svend Svendsen

Herreholm, Michelle

Geometrisk formgivning og dimensionering af innovativ rumgitter-

konstruktion i fiberforstærket plast. Konzeptuelt design af samlingsde-
taljer samt design af facade- og tagløsninger
Søren Peter Bjarløv

Larsen, Asker Selch

Geometrisk formgivning og dimensionering af innovativ rumgitter-
konstruktion i fiberforstærket plast. Konzeptuelt design af samlingsde-
taljer samt design af facade- og tagløsninger
Søren Peter Bjarløv

Dam-Jacobsen, Janus

FEM-analyse af fugtrelaterede spændinger i trækonstruktioner
Søren Traberg, Sigurdur Ormarsson

Jensen, Jonas Vendel

Design af lavenergi kontorbygning ved anvendelse af integreret design
- Med fokus på passivt energidesign og indeklime
Toke Rammer Nielsen, Lotte Bjerregaard Jensen

Simonsen, Mikkel

Design af lavenergi kontorbygning ved anvendelse af integreret design
- Med fokus på passivt energidesign og indeklime
Toke Rammer Nielsen, Lotte Bjerregaard Jensen

BEng theses

Nielsen, Heidi Heine Winther

Normalkonsolideret lers styrkeegenskaber
Anette Susanne Krogsbøll, Niels Nielsen Foged

Scheibel, Mette

Normalkonsolideret lers styrkeegenskaber
Anette Susanne Krogsbøll, Niels Nielsen Foged

Carstensen, Sune

Teori og praksis for spunsvægsberegning
Anette Susanne Krogsbøll, Ole Hededal

Davidsen, Jonatan Plesner

Dimensionering af spunsvægge efter svensk og dansk praksis
Anette Susanne Krogsbøll, Ole Hededal

Jensen, Katrine Sønderbye

Dimensionering af spunsvægge efter svensk og dansk praksis
Anette Susanne Krogsbøll, Ole Hededal

Larsen, Jakob Elsberg

Teori og praksis for spunsvægsberegning
Anette Susanne Krogsbøll, Ole Hededal

Thyssen, André Anton

Støttemur med kombineret cykelsti
Anette Susanne Krogsbøll, Per Oluf H Kjærbye

Pedersen, Birgit Astrid

Pavillionbyggeri
Anja Oluf H Kjærbye, Per Oluf H Kjærbye, Teresa Surzycka,
Lotte Bjerregaard Jensen

Petersen, Rasmus Storgaard

Selvantændelse i oplagret biomasse - en erfaringsindsamling
Anne Dederichs

Knudsen, Sofie Marie

Dagslys i kontorbyggeri
Anne Iversen, Svend Svendsen

Rasmussen, Stine Brandt

Dagslys i kontorbyggeri
Anne Iversen, Svend Svendsen

Geisler, Hansine Nivi

Vejbyggeri i Grønland
Arne Villumsen

- Nielsen, Hans Rasmus**
Fåreholderveje i Sydgrønland - udformning og vedligeholdelse
Arne Villumsen
- Ahmad, Tehmina**
Alternative løsninger til spildevandsrensning i Grønland
Arne Villumsen
- Ciftci, Sevim**
Vejbygning
Arne Villumsen, Jan Christensen (ex)
- Pangel, Lili Møller**
Skolebyggeri og indeklima
Bjarne W. Olesen, Anja Margrethe Bache
- Christensen, Alice Riviere**
Fugttransport og sorption i cementbaserede materialer
- målinger og teoretisk analyse
Björn Johannesson, Kurt Kielsgaard Hansen
- Nederveen, Tim**
Fugttransport og sorption i cementbaserede materialer - målinger og
teoretisk analyse
Björn Johannesson, Kurt Kielsgaard Hansen
- Palamutcu, Zeynel**
Konsekvenser ved ekstra isolering af konstruktioner
Carsten Rode
- Rasmussen, Kim Hjorth**
Konsekvenser ved ekstra isolering af konstruktioner
Carsten Rode
- Mølgaard, Asger Fischer**
Design af X-country skiing tunnel
Flemming Vestergaard
- Andersen, Ida Marianne Braasch**
Mitigation of ASR in Concrete with Recycled Glass Aggregate
Gregor Fischer
- Madsen, Martin Vestergaard**
Mitigation of ASR in Concrete with Recycled Glass Aggregate
Gregor Fischer
- Schmidt, Neel Jansen**
Facetterede facader
Hans Peter Nielsen, Svend Svendsen, Martin Vraa Nielsen
- Uldahl, Birthe Graham**
Facetterede facader
Hans Peter Nielsen, Svend Svendsen, Martin Vraa Nielsen
- Overbye, Lars Erik**
Selvbærende glasfacade
Henrik Stang
- Starhof, Christian Chrom**
Selvbærende glasfacade
Henrik Stang
- Skovgård, Maria**
Glasbro
Henrik Stang, Henrik Almegaard
- Vesterlund, Sascha**
Glasbro
Henrik Stang, Henrik Almegaard
- Heiredal, Troels Steenholdt**
Flydende konstruktion
Holger Koss
- Ulsfort, Henrik Kammer**
Flydende konstruktion
Holger Koss
- Ellitsgaard, Andreas Cuadros**
Nyt liv i bykirken
Holger Koss, Anja Margrethe Bache
- Faloota, Moritz Amir**
Nyt liv i bykirken
Holger Koss, Anja Margrethe Bache
- Müller, Mia Vedel**
Ubunden bærelagsmateriale til vejbefæstelser i arktiske regioner
Jan M. Jansen, Ole Hededal
- Jensen, Jørgen Jonas**
Store solvarmeanlæg i Grønland
Janne Dragsted, Simon Furbo
- Johansen, Ann-Mari Lanty**
Levetid for solfangere
Janne Dragsted, Simon Furbo, Jianhua Fan
- Nielsen, Alf Lassen**
Influence of Numerical Methods on the Simulated Air Flow around a
High Building
Jianhua Fan
- Roslyng, Anne Juul**
Modellering af armerede betonbjælker
John Forbes Olesen
- Kristiansen, Morten de Blanck**
Glasskal opbygget af plane elementer
John Forbes Olesen, Henrik Almegaard
- Nielsen, Kasper Laurits Krag**
Glasskal opbygget af plane elementer
John Forbes Olesen, Henrik Almegaard
- Ellingsgaard, Heini**
Analyse af solindfald og undersøgelse af danske vejrdato
Jørgen Erik Christensen, Lars Bak Jepsen (ex)
- Kastberg, Anders Kristian**
Analyse af solindfald og undersøgelse af danske vejrdato
Jørgen Erik Christensen, Lars Bak Jepsen (ex)
- Elisberg, Marie Dernoff**
Gen-impregnering af træ i bevaringsværdige bygninger
Lisbeth M. Ottosen
- Paulsen, Anton Jarlsvig**
Gen-impregnering af træ i bevaringsværdige bygninger
Lisbeth M. Ottosen
- Grøn, Matilde**
Fremtidens kollegie
Lotte Bjerregaard Jensen
- Sørensen, Jannie Bakkær**
Vævet geotekstil som tekstilforskalling
Lotte Bjerregaard Jensen, Kurt Kielsgaard Hansen
- Wonsild, Ida Høigaard**
Vævet geotekstil som tekstilforskalling
Lotte Bjerregaard Jensen, Kurt Kielsgaard Hansen
- Schødt, Bjarke Lehmann**
Urbanitet og bæredygtighed
Lotte Bjerregaard Jensen, Svend Svendsen
- Bruce, Nicholas Peter**
Vagabonderende strømme i fiberarmeret beton, parameterstudie
Mette Rica Geiker
- Hostrup-Pedersen, Christopher**
Vagabonderende strømme i fiberarmeret beton, parameterstudie
Mette Rica Geiker
- Al Najafi, Zahra Chafic**
Ikke-destruktiv identificering af korrosion af stålfiber i beton
Mette Rica Geiker
- Dahl, Mathias Inooaq Brink**
Tekniske undersøgelser af anlægsarbejder i fjeld i Grønland
Niels Nielsen Foged, Thomas Ingeman-Nielsen

Møller, Dan Eggert

Lydhastighedsmålinger og bjergmasseklassifikation relateret til tunnelbyggeri i Grønland
Niels Nielsen Foged, Thomas Ingeman-Nielsen

Autzen, Peter

Beton med styret porøsitet
Ole Mejlhede Jensen, Sara Laustsen

Borggaard, Jakob Simon

Gennemlokning af fiberarmerede plader
Per Goltermann

Christiansen, Kasper Dichmann

Forskydningsforsøg i fiberbeton
Per Goltermann

Rosengaard, William Kristoffer

Gennemlokning af fiberarmerede plader
Per Goltermann

Ørbæk, David

Forskydningsforsøg i fiberbeton
Per Goltermann

El-Set, Mirvat

Bygningsprojektering
Per Goltermann, Per Oluf H Kjærbye

Fraenkel, Søren Nordstjerne

Cirkulære betonsiloer
Per Goltermann, Per Oluf H Kjærbye

Gamal, Heavy Deary

Bygningsprojektering
Per Goltermann, Per Oluf H Kjærbye

Jensen, Søren Lundsgaard

Cirkulære betonsiloer
Per Goltermann, Per Oluf H Kjærbye

Knudsen, Marlene

Bygningsprojektering, Sluseholmen
Per Goltermann, Per Oluf H Kjærbye

Gjerstrup, Peter Sejr

Design, projektering og udførelse af småhus
Per Goltermann, Per Oluf H Kjærbye

Jahr, Thomas Christian

Design, projektering og udførelse af småhus
Per Goltermann, Per Oluf H Kjærbye

Johansen, Thomas Brøndberg

Design, projektering og udførelse af småhus
Per Goltermann, Per Oluf H Kjærbye

Al-Hasany, Dara Zaher

Konstruktion af bygninger
Per Goltermann, Per Oluf H Kjærbye

Al-Hassani, Auda

Projektering af byggeri
Per Goltermann, Per Oluf H Kjærbye

Hassan, Ali Mohammad

Konstruktion af bygninger
Per Goltermann, Per Oluf H Kjærbye

Aslan, Cebrail

Husbygningsprojektering
Per Goltermann, Per Oluf H Kjærbye

Ücler, Cengiz

Husbygningsprojektering
Per Goltermann, Per Oluf H Kjærbye

Madsen, Stine Skaarup

Bygningsdesign
Per Oluf H Kjærbye, Anja Margrethe Bache

Petersen, Katja

Bygningsdesign
Per Oluf H Kjærbye, Anja Margrethe Bache

Andersen, Jens Fogh

Soltransmittans for glas
Simon Furbo, Jianhua Fan

Harrestrup, Maria

Effektivitet og levetid af HT solfangere
Simon Furbo, Jianhua Fan

Pedersen, Lasse Juhl

Soltransmittans for glas
Simon Furbo, Jianhua Fan

Ravn, Brian Robert

Limede samlinger i modificeret træ
Staffan Svensson

Hansen, Jesper Østergård

Energirenovering af boliger - metode og eksempel
Svend Svendsen

Michaelsen, Lasse Ingeman

Energirenovering af boliger - metode og eksempel
Svend Svendsen

Mouridsen, Kristian Gjelstrup

Integreret design og optimering af fremtidens kontorbyggeri
Svend Svendsen

Jagielska, Zofia

Byen på kanten - den målebar bæredygtighed
Svend Svendsen, Jakob Bjørn Strømmand-Andersen

Vestergaard, Line Stybe

Byen på kanten - den målebar bæredygtighed
Svend Svendsen, Jakob Bjørn Strømmand-Andersen

Horsner, Heidi Larsen

Energirenovering af etageejendomme
Svend Svendsen, Lotte Bjerregaard Jensen

Lorentzen, Jakob Lærke

Energirigtig renovering af skoler
Svend Svendsen, Lotte Bjerregaard Jensen

Roed, Susanne

Energirenovering af etageejendomme
Svend Svendsen, Lotte Bjerregaard Jensen

Hamann-Pedersen, Signe

Undersøgelse og eksemplificering af præfabrikeret modulbyggeri med energi, økonomi og arkitektur som styrende parametre
Teresa Surzycka, Lotte Bjerregaard Jensen

Østergaard, Anne Sophie

Undersøgelse og eksemplificering af præfabrikeret modulbyggeri med energi, økonomi og arkitektur som styrende parametre
Teresa Surzycka, Lotte Bjerregaard Jensen

Hansen, Rasmus Brusgaard

Forøgelse af den urbane densitet
Toke Rammer Nielsen

Nielsen, Jens Peter

Termisk bygningsanalyse via Revit, IESVE og BSim
Toke Rammer Nielsen

Køppen, Louise Skou

Et bæredygtigt projekt - dagslys, termisk indeklima og energi
Toke Rammer Nielsen, Teresa Surzycka

Schulz, Betina Cecilie Witthøft

Et bæredygtigt projekt - dagslys, termisk indeklima og energi
Toke Rammer Nielsen, Teresa Surzycka

BSc theses

Pedersen, Rene Bøgelund

Jordtryk på spunsvægge
Anette Susanne Krogsbøll

Andersen, Mette Egstrand

Afprøvning af to målemetoder til karakterisering af materialers fugtbindingssevne
Björn Johannesson, Staffan Svensson, Kurt Kielsgaard Hansen

Thomassen, Annika

Afprøvning af to målemetoder til karakterisering af materialers fugtbindingssevne
Björn Johannesson, Staffan Svensson, Kurt Kielsgaard Hansen

Hansen, Kim Beck

Corrosion Initiation in Cracked Reinforced Concrete
Bradley Justin Pease, Mette Rica Geiker

Simonsen, Jens Roy

Design af vindeltrappe til et hovedsæde
Henning Agerskov

Ünver, Kadir

Design af vindeltrappe til et hovedsæde
Henning Agerskov

Ussing, Sylvester Andreas

Undersøgelse af laskesamling med glasplader og glas dorn
Henrik Stang, Peter Noe Poulsen

Jensen, Jens Hjorth

Statisk analyse af ” Den Blå Planet”
Jeppe Jönsson, Peter Noe Poulsen

Mikkelsen, Emil

Statisk analyse af ” Den Blå Planet”
Jeppe Jönsson, Peter Noe Poulsen

Jensen, Nicolai Jannich

Alternative vindmøletårne
John Forbes Olesen, Peter Noe Poulsen

Bollhorn, Peter

Numerisk hængselmodel for armeret betonbjælke
John Forbes Olesen, Peter Noe Poulsen

Puurand, Maire

Udstillingsbygning i glas
Leif Otto Nielsen, Peter Noe Poulsen

Ingdam, Nichlas

Indflydelse af blandemetode på homogeniteten af stålfiberarmet beton
Mette Rica Geiker, Anders Ole Stubbe Solgaard

Lund, Philip Giødesen

Hydropower Potentials in Southern Greenland
Morten Holtegaard Nielsen

Matthiesen, Bo

Grundvandsundersøgelser i Grønland
Morten Holtegaard Nielsen

Dahl, Rasmus Rokkjær

Grundvandsundersøgelser i Grønland
Morten Holtegaard Nielsen, Rasmus Jakobsen

Madsen, Lars Krogsgaard

Grundvandsundersøgelser i Grønland
Morten Holtegaard Nielsen, Rasmus Jakobsen

Woxholt-Jensen, Magnus

Temperaturindflydelse på styrke- og deformationsegenskaber for Stevns kalk
Niels Nielsen Foged, Katrine Alling Andreassen

Kannov, Peter Hwan

Overdækning af banegrav ved Vesterport
Per Goltermann, Per Oluf H Kjærbye

Vistisen, Martin

Beregningsprogram for flydelinier i plader
Per Goltermann, Peter Noe Poulsen

Larsen, Alexander Brechling

Projektering af gangbro
Peter Noe Poulsen

Olesen, Lars

Analyse af komposit lavbro til Femern Bælt
Peter Noe Poulsen, Niels Jørgen Gimsing

Vest, Joakim

Analyse af komposit lavbro til Femern Bælt
Peter Noe Poulsen, Niels Jørgen Gimsing

Jensen, Morten Møller

Experimental Evaluations of Rotational Friction Dampers
Sigurdur Ormarsson

Boesen, Thomas

Implementeringsgraden af LEAN i den danske byggesektor
Søren Peter Bjarløv

Madsen, Anders

Implementeringsgraden af LEAN i den danske byggesektor
Søren Peter Bjarløv



Staff

As of December 31 2009		2009	2008	2007	2006	2005	2004
Scientific	Professor	9	7	7	7	9	11
	Associate Professor	42	40	40	46	38	44
	Assistant Professor	7	8	7	10	15	15
	Other VIP	7	9	9	9	6	4
	PhD Students	64	51	42	37	44	40
Total		129	115	105	109	112	114
Technical and Administrative	Academic	9	9	9	11	11	10
	Clerical	10	11	13	13	12	12
	Technician	25	21	20	18	22	22
	Other	6	9	7	5	5	4
	Total	50	50	49	47	50	48
Total Department Staff		179	165	154	156	162	162

Education

STÅ ¹ -total		496	494	514	483	508	519
Projects (students)	MSc	69	74	88	85	92	74
	BSc	20	34	51	31	36	56
	BEng	61	84	119	130	62	82
Admission (students)	BSc (Building Technology)	63	65	58	62	72	60
	BEng (Architectural Engineering)	46	45	47	50	52	42
	BEng (Civil Engineering-summer)	79	82	84	75	63	58
	BEng (Civil Engineering-winter)	31	39	29	38	30	32
	BEng (Arctic Technology)	17	19	18	8	9	8

Research

Refereed papers	Total	53	50	67	45	61	63
	Of these in ISI	46	47	48	30	43	37
PhD theses		8	3	13	5	8	10
Doctoral theses		0	0	0	0	1	0

Finances

Revenues	DTU-grant	70.340	66.718	59.827	56.656	53.184	52.523
	External revenue	44.188	46.489	30.326	31.033	30.862	28.563
	Total	114.528	113.207	90.153	87.689	84.046	81.094
Expenditures	Wages	77.830	68.846	66.782	63.021	62.725	62.917
	Other expenses	34.471	31.933	23.954	26.420	19.628	16.445
Total		112.301	100.779	90.736	89.441	82.353	79.362
Result		2.227	12.428	-583	-1.757	1.693	1.732
Available amount	January 1	9.054	7.839	6.200	7.957	6.264	4.532
Carried forward	December 31	11.281	9.054	5.617	6.200	7.957	6.264

STÅ¹: 1 STÅ is one student annual work (1 STÅ=60 ects points)

Donations

Grundejernes Investeringsfond

Elektrokinetisk injection, 392.000 kr., Sektionen for Byggematerialer

Knud Højgaards Fond

RILEM Doctoral Course - Durability og concrete, 70.000 kr.,
Section for Construction Materials

Bergiafonden

Saltfjernelse fra gotlandske sandsten, 50.000 kr.,
Sektionen for Byggematerialer

Knud Højgaards Fond

RILEM Conference, 70.000 kr., Section for Construction Materials

Knud Højgaards Fond

PhD Symposium in Civil Engineering 20-23 June 2010, 286.313 kr.,
Section for Construction Materials

Otto Mønstedts Fond

Gæsteprofessor Hrnrnk A. Sobczuk, 195.000 kr., Sektionen
for Bygningsfysik og Installationer

Otto Mønstedts Fond

Gæsteprof Richard Horden, 195.000 kr., Center for Arktisk Teknologi

COWIfonden

Respons fra cyklisk tværbelastning af vindmølle monopælfundament
i vandmættet sand, 60.000 kr., Sektionen for Geoteknik

Reinholdt W. Jorck og Hustrus Fond

Award for career achievement and research excellence, 150.000 kr.,
Christos Georgakis/Section for Structural Engineering

Martha & Paul Kern-Jespersens fond

Måling af mørtelfugers forskydningsstyrke, 50.000 kr.,
Sektionen for Byggematerialer

Hygro Wick-International, ApS.

Bidrag til festligholdelse af 50-året for oprettelsen af
Laboratoriet for Varmeisolering, 10.000 kr., Sektionen
for Bygningsfysik og Installationer

Varmeiseringsforeningen

"Projekter eller aktiviteter, der medvirker til udvikling af den
ikke-transparente del af klimaskærmen i relation til lavenergi-byggeri",
50.000 kr., Sektionen for Bygningsfysik og Installationer

Bjarne Saxhof Fond

Afdelingen for Forskning og Innovation, 1.000.000 kr. ved Carsten Rode

Villum Kann Rasmussen Fonden

Gæsteprofessor Jan Hensen, 1.200.000 kr., Sektionen for Indeklima

Knud Højgaards Fond

Ph.d kursus: Flow of Fresh Cement Based Materials,
81.750 kr., Section for Construction Materials

Fonden Realdania

Research project on ceramic glaze-treated concrete,
940.000 kr., Section for Building Design

Direktør Ib Henriksens Fond

Støtte til køb af stensav til præcisionsskæring, 75.000 kr.,
Sektionen for Byggematerialer

COWIfoundation

Research on Clark Electroder, 66.000 kr.,
Section for Construction Materials

DTU Civil engineering
Technical University of Denmark, Brovej, Building 118
DK-2800 Kgs. Lyngby

Phone +45 4525 1700
Fax +45 4588 3282
byg@byg.dtu.dk
www.byg.dtu.dk