

Technical University of Denmark



Automated minimax design of networks

Madsen, Kaj; Schjær-Jacobsen, Hans; Voldby, J

Published in:
IEEE Transactions on Circuits and Systems

Publication date:
1975

Document Version
Publisher's PDF, also known as Version of record

[Link back to DTU Orbit](#)

Citation (APA):
Madsen, K., Schjær-Jacobsen, H., & Voldby, J. (1975). Automated minimax design of networks. IEEE Transactions on Circuits and Systems, 22(10), 791-796.

DTU Library

Technical Information Center of Denmark

General rights

Copyright and moral rights for the publications made accessible in the public portal are retained by the authors and/or other copyright owners and it is a condition of accessing publications that users recognise and abide by the legal requirements associated with these rights.

- Users may download and print one copy of any publication from the public portal for the purpose of private study or research.
- You may not further distribute the material or use it for any profit-making activity or commercial gain
- You may freely distribute the URL identifying the publication in the public portal

If you believe that this document breaches copyright please contact us providing details, and we will remove access to the work immediately and investigate your claim.

Automated Minimax Design of Networks

KAJ MADSEN, HANS SCHJÆR-JACOBSEN, AND JØRGEN VOLDBY

Abstract—A new gradient algorithm for the solution of nonlinear minimax problems has been developed. The algorithm is well suited for automated minimax design of networks and it is very simple to use. It compares favorably with recent minimax and least p th algorithms. General convergence problems related to minimax design of networks are discussed. Finally, minimax design of equalization networks for reflection-type microwave amplifiers is carried out by means of the proposed algorithm.

I. INTRODUCTION

IN PRACTICAL circuit and systems design it is often required to approximate certain specified characteristics with physical realizable response functions in such a way that the maximum deviation is minimized. Such Chebyshev or minimax solutions are usually not obtainable by analytical means in general cases with arbitrary specifications or when strongly frequency dependent elements are used in broadband systems design. It is therefore well motivated to try to develop iterative schemes to achieve performance approximations that are optimum in the minimax sense.

Ishizaki and Watanabe [1] and Osborne and Watson [2] introduced very similar approaches with successive local linearizations of the nonlinear equations. However, these methods may fail to converge if certain singularities are present. Bandler *et al.* have developed an algorithm not requiring derivatives [3] and also an algorithm which uses gradient information of one of more of the highest ripples in the response error function [4]. Recent work by Bandler and Charalambous [5], [6] used at least p th approach together with a gradient optimization algorithm to provide minimax solutions.

This paper describes a new algorithm that is based on successive linear approximations to the nonlinear functions defining the problem. The resulting linear systems are solved in the minimax sense with automatically adjusted bounds on the solutions, depending on the goodness of the linear approximations. This approach has proved successful in least-squares approximation problems [7]. Unlike some of the previous developed methods, the present algorithm avoids expensive line searches. Although the method is intended for solution of a wide range of nonlinear minimax problems, it will be compared here with other algorithms solving cascaded transmission-line transformer problems. The versatility of the algorithm is finally demonstrated by optimal design of microwave reflection amplifiers.

Manuscript received July 12, 1974; revised November 19, 1974 and February 17, 1975.

K. Madsen is with the Institute for Numerical Analysis, Technical University of Denmark, DK-2800 Lyngby, Denmark.

H. Schjær-Jacobsen and J. Voldby are with the Electromagnetics Institute, Technical University of Denmark, DK-2800 Lyngby, Denmark.

II. A NEW ALGORITHM

A. Mathematical Introduction

The minimax problem under consideration is that of minimizing

$$F(\underline{x}) = \max_j |f_j(\underline{x})| \quad (1)$$

where

$$f_j(\underline{x}) = f_j(x_1, x_2, \dots, x_n), \quad j = 1, 2, \dots, m, \quad m \geq n \quad (2)$$

is a set of residuals which are nonlinear functions of the design parameters \underline{x} . In the frequency-domain design case f_j may be thought of as the deviation of an actual network amplitude response $H(\underline{x}, \psi_j)$ from a desired response $H_0(\psi_j)$ at the j th sample frequency ψ_j :

$$f_j(\underline{x}, \psi_j) = H(\underline{x}, \psi_j) - H_0(\psi_j). \quad (3)$$

At the k th stage of the algorithm a minimax solution \underline{h}_k to the linearized system

$$f_j(\underline{x}_k) + \sum_{i=1}^n \frac{\partial f_j}{\partial x_i}(\underline{x}_k) h_{ki} = 0, \quad j = 1, 2, \dots, m \quad (4)$$

is found subject to the constraints

$$\|\underline{h}_k\| = \max_i |h_{ki}| \leq \lambda_k. \quad (5)$$

λ_k is automatically adjusted during the process to try to provide the inequality

$$F(\underline{x}_k + \underline{h}_k) < F(\underline{x}_k) \quad (6)$$

allowing a new approximate solution to be defined as

$$\underline{x}_{k+1} = \underline{x}_k + \underline{h}_k. \quad (7)$$

Thus the value of λ_k should depend on the goodness of the linear approximations to (2) at $\underline{x} = \underline{x}_k$. The more the residuals f_j differ from a set of linear functions in the neighborhood of \underline{x}_k , the smaller λ_k should be chosen. Correspondingly, if the linear approximations are very good, and \underline{x}_k is not near a minimum, we will allow the next step to be larger by choosing a larger value of λ_{k+1} . This strategy offers a great deal of flexibility because it allows the algorithm to adapt to the local behavior of $F(\underline{x})$.

B. Detailed Mathematical Description

Let $\bar{F}(\underline{x}, \underline{h})$ be defined through

$$\bar{F}(\underline{x}, \underline{h}) = \max_j |f_j(\underline{x}) + (\nabla f_j(\underline{x}), \underline{h})| \quad (8)$$

where

$$\nabla f_j(\underline{x}) = \left(\frac{\partial f_j}{\partial x_1}(\underline{x}), \dots, \frac{\partial f_j}{\partial x_n}(\underline{x}) \right). \quad (9)$$

Now \underline{h}_k is found as solution to the linear problem

$$\bar{F}(\underline{x}_k, \underline{h}_k) = \min_{\|\underline{h}\| \leq \lambda_k} \{\bar{F}(\underline{x}_k, \underline{h})\}. \quad (10)$$

This subproblem may be solved by a standard linear programming routine. However, we have solved the subproblem by a method similar to the exchange algorithm [9], which is more efficient than the linear programming method.

The point $(\underline{x}_k + \underline{h}_k)$ is chosen as the next point in the iteration, if the decrease in the function F exceeds a small multiple of the decrease predicted by the linear approximation, i.e., if

$$\Delta F_k \geq 0.01 \Delta \bar{F}_k \quad (11)$$

where

$$\Delta F_k = F(\underline{x}_k) - F(\underline{x}_k + \underline{h}_k) \quad (12)$$

and

$$\Delta \bar{F}_k = \bar{F}(\underline{x}_k, \underline{0}) - \bar{F}(\underline{x}_k, \underline{h}_k). \quad (13)$$

If (11) fails we let $\underline{x}_{k+1} = \underline{x}_k$.

The value λ_{k+1} is defined as follows. If

$$\Delta F_k \leq \alpha \Delta \bar{F}_k \quad (14)$$

where $0.01 < \alpha < 1$, we choose $\lambda_{k+1} = \beta \|\underline{h}_k\|$, $0 < \beta < 1$. As a consequence of this we will have $\lambda_{k+1} \leq \beta \lambda_k$ in the case where $\underline{x}_{k+1} = \underline{x}_k$. This strategy ensures convergence because (12) will be positive for $\|\underline{h}_k\|$ sufficiently small, unless a local minimum is reached. Experiments have shown that the values $\alpha = \beta = 0.25$ are appropriate, so in the computer program we use these constants.

If (14) is not fulfilled, and

$$\Delta^2 \bar{F}_k \leq 0.25 \Delta F_k \quad (15)$$

where

$$\Delta^2 \bar{F}_k = \max_j |f_j(\underline{x}_k + \underline{h}_k) - \{f_j(\underline{x}_k) + (\nabla f_j(\underline{x}_k), \underline{h}_k)\}| \quad (16)$$

is a measure of the goodness of the linear approximation, we choose $\lambda_{k+1} = 2\|\underline{h}_k\|$. In practice this will mean that if the linear approximation is very good, and \underline{x}_k is not near a local minimum, we will have $\lambda_{k+1} = 2\lambda_k$.

If neither (14) nor (15) is satisfied, we let $\lambda_{k+1} = \|\underline{h}_k\|$.

For the sake of clarity, a flow-diagram of the algorithm is shown in Fig. 1.

The iterations are stopped whenever the convergence criterion

$$\lambda_k \leq \epsilon \|\underline{x}_k\| \quad (17)$$

where ϵ is a small user-specified number, is met.

It can be shown that the algorithm has sure convergence properties. The interested reader is referred to [8] for the rather lengthy and space-consuming convergence proofs.

C. Practical Implementation

The proposed algorithm has been implemented for a digital computer (IBM 370/165) in double precision Fortran IV. The package is user-oriented and very simple to apply. The user only needs to know the parameter list of

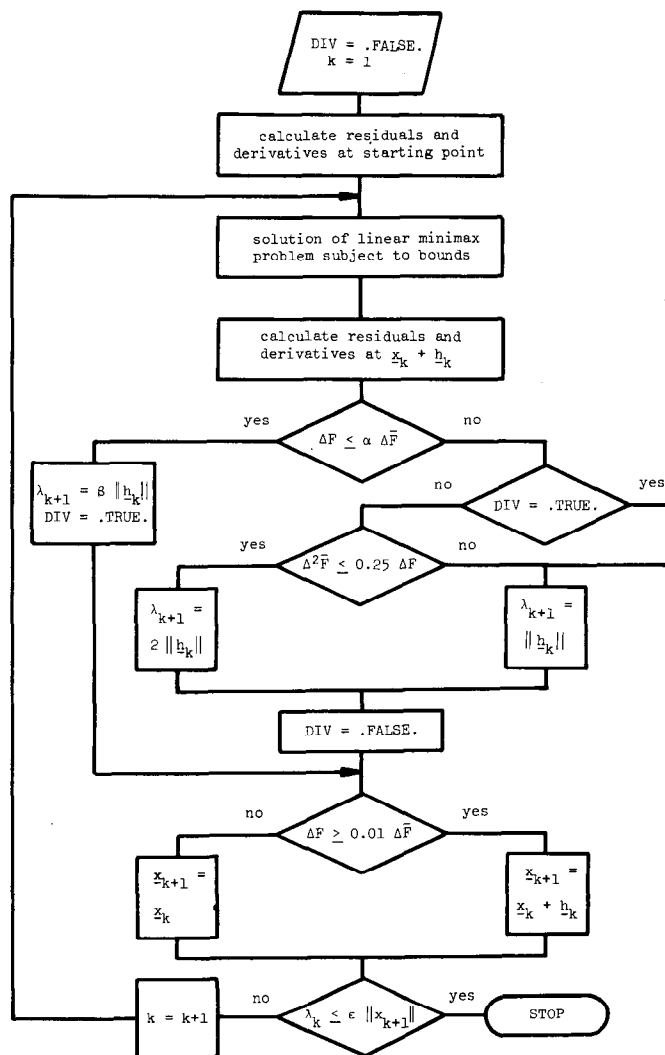


Fig. 1. Mathematical flow diagram of minimax algorithm.

the minimization subprogram and to code a subroutine for calculating the residuals and the sensitivities. On entry initial estimates of \underline{x} and λ should be provided together with parameters n , m , and ϵ . Since the bounds are adjusted by the subroutine the choice of the initial value of λ is not critical. We suggest a value near 10 percent of the norm of the starting vector. In all the runs quoted in this paper the initial value of λ has been set equal to 0.1.

The program package is available from the authors on request.

III. NUMERICAL RESULTS

A. Comparison with Other Algorithms

To compare the proposed algorithm with already published minimax and least p th algorithms, the well-known two- and three-section cascaded transmission-line 10:1 transformers, see Fig. 2, have been optimized over a 100-percent bandwidth. These test problems were introduced in [3]. The residuals f_j have been correspondingly defined as

$$f_j(\underline{x}) = \frac{1}{2} |\rho_j(\underline{x})|^2, \quad j = 1, 2, \dots, 11 \quad (18)$$

TABLE I
OPTIMIZATION OF TWO-SECTION 10:1 QUARTER-WAVE TRANSFORMER OVER 100-PERCENT BANDWIDTH

Starting values		Number of networks analysis						
Z_1	Z_2	Razor [3]	Grazor [4]	Least p'th [5] ($p = 100$)	This algorithm			
					1.0%	0.1%	0.01%	
1.0	3.0	157, 207	126	22	9	11	13	
1.0	6.0	34, 152	83	30	9	9	12	
3.5	6.0	223, 100	52	15	7	9	10	
3.5	3.0	210, 163	29	14	8	11	13	

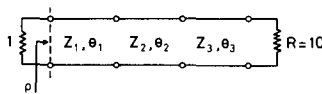


Fig. 2. Three-section cascaded transmission-line 10:1 transformer. Characteristic impedances Z and electrical lengths θ (radians at center frequency).

where the 11 normalized sample frequencies ψ_j are $\{0.5, 0.6, 0.7, 0.77, 0.9, 1.0, 1.1, 1.23, 1.3, 1.4, 1.5\}$ in the three-section case and uniformly spaced in the two-section case. The gradients $\partial f_j / \partial x_i$ are conveniently obtained using scattering matrix sensitivities [10], [11] based on the adjoint network concept [12], [13]. Since the network is reciprocal, only one network analysis is required to find the sensitivities. The basis of algorithm comparisons is the number of total network frequency analysis (including evaluation of the gradients) that is required to bring the maximum reflection coefficient

$$\max_j |\rho_j| \tag{19}$$

within 0.01 percent of its known optimum value for the two-section transformer (0.42857) and to bring (19) within 5 decimals accuracy (0.19729) in the three-section case. For our method we also quote the number of iterations used to bring (19) within 1 percent, 0.1 percent, and 0.01 percent of the optimum value.

With fixed quarter-wave lengths some results are given for the two-section case in Fig. 3(a)–(d) as a function of the number of function evaluations N . Four different combinations of starting values of the characteristic impedances were used, namely, $(Z_1, Z_2) = (1.0, 3.0), (1.0, 6.0), (3.5, 6.0),$ and $(3.5, 3.0)$. The rate of convergence appears to be quite fast and in Table I comparisons are made with some previously published algorithms [3]–[5].

In Fig. 4 results for the three-section transformer are shown using the starting point $(Z_1, Z_2, Z_3) = (1.0, 3.16228, 10.0)$ and keeping the lengths fixed at the optimum values $\pi/2$. In Table II, left column, also comparative results obtained in previous works [2]–[4] are tabulated.

The following two examples concerned with the three-section case varying both impedances and lengths exhibit

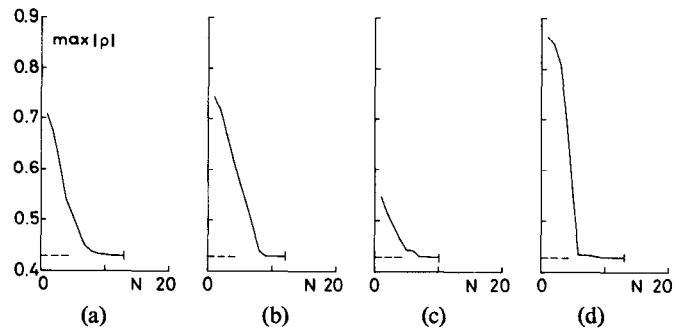


Fig. 3. Optimization of two-section 10:1 quarter-wave transformer over 100-percent bandwidth to 0.01 percent accuracy. Starting points (Z_1, Z_2) : (a) (1.0, 3.0), (b) (1.0, 6.0), (c) (3.5, 6.0), (d) (3.5, 3.0).

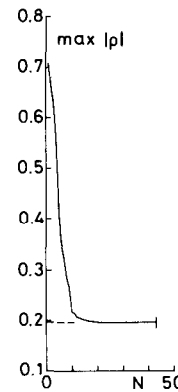


Fig. 4. Optimization of three-section 10:1 quarter-wave transformer over 100-percent bandwidth to 0.01 percent accuracy. Starting point (Z_1, Z_2, Z_3) : (1.0, 3.16228, 10.0).

a type of singularity at the solution that causes extremely slow final convergence. From the discussion in Section IV it follows that when the system is singular at the solution, α ought to be chosen smaller and β larger than in the non-singular case. In order to illustrate this point we present the number of function evaluations used by our algorithm for various values of (α, β) in Table II, right columns. The numbers also illustrate the point that the initial rate of convergence will normally not be affected by the singularity of the system. Also the corresponding results from the

TABLE II
OPTIMIZATION OF THREE-SECTION 10:1 TRANSFORMER OVER 100-PERCENT BANDWIDTH

Starting values		Fixed lengths			Variable lengths and impedances								
		Z_1	θ_1	Z_2	θ_2	Z_3	θ_3						
	Z_1	1.0	$\frac{\pi}{2}$	1.0	$\frac{\pi}{2}$	1.5	$0.8 \cdot \frac{\pi}{2}$						
	θ_1	$\frac{\pi}{2}$	3.16228	$\frac{\pi}{2}$	3.16228	3.0	$1.2 \cdot \frac{\pi}{2}$						
	Z_2	3.16228	$\frac{\pi}{2}$	10.0	$\frac{\pi}{2}$	6.0	$0.8 \cdot \frac{\pi}{2}$						
	θ_2	$\frac{\pi}{2}$	10.0	$\frac{\pi}{2}$	10.0	6.0	$0.8 \cdot \frac{\pi}{2}$						
	Z_3	10.0	$\frac{\pi}{2}$	10.0	$\frac{\pi}{2}$	6.0	$0.8 \cdot \frac{\pi}{2}$						
	θ_3	$\frac{\pi}{2}$	10.0	$\frac{\pi}{2}$	10.0	6.0	$0.8 \cdot \frac{\pi}{2}$						
Number of network analysis													
Osborne and Watson [2], [4]		199		860*		237*							
Razor [3]		406		1300*		1250*							
Grazor [4]		219		696		498							
Least p'th [6] (average values)		-		155		95							
This algorithm		1%, 0.1%, 0.01% 5 sign. figures		1%, 0.1%, 0.01% 5 sign. figures		1%, 0.1%, 0.01% 5 sign. figures							
α	β	18	26	43	99	186	304	431	707	7	12	125	253
0.25	0.25	-	-	-	-	121	208	309	373	16	21	32	67
0.1	0.70	-	-	-	-	114	175	253	313	15	24	103	178
0.09	0.75	-	-	-	-	77	148	239	294	22	32	42	63
0.08	0.80	-	-	-	-	47	139	193	258	27	35	49	57
0.07	0.85	-	-	-	-	56	75	86	516	37	56	83	143
0.06	0.90	-	-	-	-	80	118	126	473	65	84	120	136
0.05	0.95	-	-	-	-	-	-	-	-	-	-	-	-

* Solution not reached with required accuracy.

literature [2]-[4], [6] are quoted. In [6] two least p th algorithms (with modifications) were presented. However, for the sake of brevity only the most favorable results are quoted here.

From Tables I and II it occurs that our algorithm performs quite good on the particular test problems under consideration.

B. Optimum Design of Reflection Amplifiers

Consider a reflection amplifier with a transferred electron device represented by its measured small signal impedance, Fig. 5. An equalization network consisting of cascaded transmission line sections in front of the device is assumed in order to provide tuning facilities. The entire amplifier is then adequately modeled in analogy with the transformers previously described in Fig. 2, the voltage gain at the sample frequency ψ_j being given by $|\rho_j|$. The residuals are defined by

$$f_j(x) = \frac{1}{2}(|\rho_j(x)| - G_0)^2, \quad j = 1, \dots, 15 \quad (20)$$

where G_0 denotes the desired voltage gain within the frequency band 8.0-10.8 GHz and the sample frequencies are equidistantly spaced.

Both impedances and lengths are allowed to vary and from identical starting points $(Z_1, Z_2, \theta_1, \theta_2) = (1.0, 1.0,$

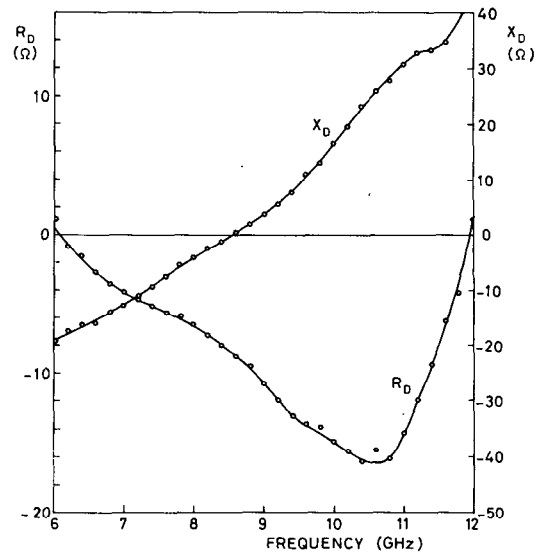


Fig. 5. Measured small signal impedance $Z_D = R_D + jX_D$ of packaged transferred electron device. Device data: $n_0 = 1.5 \cdot 10^{15} \text{ cm}^{-3}$, $L = 12 \mu\text{m}$, $R_0 = 5.6 \Omega$, $V_0 = -8.7 \text{ V}$.

TABLE III
OPTIMIZATION OF TWO-SECTION EQUALIZATION NETWORKS FOR TRANSFERRED ELECTRON AMPLIFIER IN FREQUENCY INTERVAL 8.0-10.8 GHz ($\epsilon = 10^{-5}$, $\alpha = \beta = 0.25$)

SPECIFIED VOLTAGE GAIN	Z_1^*	θ_1	Z_2^*	θ_2	FUNCTION EVALUATIONS
3.5	0.401868	2.13885	0.114232	0.302374	125
3.0	0.441668	2.044808	0.209277	0.535822	118
2.5	0.481489	1.94140	0.300273	0.738606	27
2.0	0.521104	1.82380	0.409896	0.907693	66
INITIAL VALUES	1.0	$\frac{\pi}{2}$	1.0	$\frac{\pi}{2}$	-

* Normalized to 50 Ω .

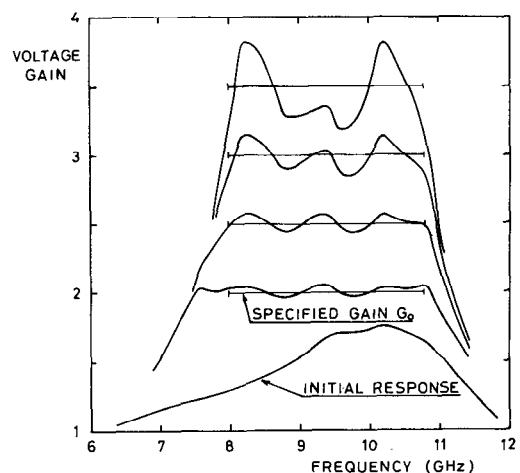


Fig. 6. Minimax transferred electron amplifier responses corresponding to different target gain specifications.

$\pi/2, \pi/2$) results are revealed in Table III and Fig. 6. Note that the starting point corresponds to the nonexistence of a tuning structure, i.e., no *a priori* information has been used in selecting the initial values of the optimization parameters.

It has not been the purpose of this section to deal with problems such as stability, discontinuity capacitances, device package parameters, etc., related to reflection-type amplifiers. Concerning these problems, the interested reader is referred to the literature, for example, [14].

IV. DISCUSSION

The last two test problems considered in Section III-A belong to a class of minimax problems that are singular in the following sense. Normally, at a minimax solution the extreme values of the residuals are attained in at least $n + 1$ points. In these two test problems, however, $n = 6$, but the optimum response only has $r = 4$ maxima [3]. Because of the continuity this means that near the solution r of the functions f_j will determine $F(\underline{x})$, and it can be shown that the corresponding r linear approximations of the form (4) are linearly dependent. Therefore, the unrestricted solution to (4) may not exist, and if it exists it will have the property $\|h_k\| \rightarrow \infty$. Consequently, we obtain convergence only because of the bounds (5). This inconvenience may of course be eliminated, if, for example, the line lengths are kept fixed at the optimum values while searching for the optimum impedances.

Because of the linear dependence $F(\underline{x})$ describes a steep valley near the optimum, and, consequently, the linear approximations must be very accurate in order to ensure a decreasing sequence of function values. This means that (14) often will be satisfied and as a result the bound on the step lengths will be very small, which means many iterations. Therefore, the conditions for decreasing the bound must be mild, which means that α must be smaller and that β must be larger.

Note that the difficulty only occurs when \underline{x}_k is near the optimum, so we will have a fast initial convergence in all cases. The rather slow final convergence in the singular case is characteristic for methods using the objective function $F(\underline{x})$ (this method, [1]–[4]), whereas methods that work with smoother objective functions (e.g., [6]) probably are superior at this point. When our algorithm is applied to nonsingular problems, the final rate of convergence is quadratic [8]. If, however, it is known in advance that the problem is singular we adjust the constants α and β to improve the final rate of convergence.

V. CONCLUSION

A nonlinear minimax optimization method has been developed and documented. The comparisons that have been carried out with published algorithms seem to indicate that the proposed algorithm is quite effective in achieving optimal minimax solutions to specific network design problems. Also more practical design problems have been satisfactorily solved by the algorithm, namely, design of equalization networks for microwave reflection-type amplifiers using measured small-signal data for the active device.

The problems arising from singularities have been briefly discussed and suggestions have been made as to increase the final rate of convergence in such singular cases.

It is believed that the present method will find widely spread applications within the field of network design and other fields in which solution of nonlinear minimax problems is essential.

ACKNOWLEDGMENT

The GaAs-transferred electron device used in Section III-B was fabricated at the Microwave Institute Foundation, Stockholm, Sweden, and furnished by B. Jeppsson. O. Nielsen is gratefully acknowledged for having supplied measured data of the device.

REFERENCES

- [1] Y. Ishizaki and H. Watanabe, "An iterative Chebyshev approximation method for network design," *IEEE Trans. Circuit Theory*, vol. CT-15, pp. 326–336, Dec. 1968.
- [2] M. R. Osborne and G. A. Watson, "An algorithm for minimax approximation in the nonlinear case," *Comput. J.*, vol. 12, pp. 63–68, Feb. 1969.
- [3] J. W. Bandler and P. A. Macdonald, "Optimization of microwave networks by razor search," *IEEE Trans. Microwave Theory Tech.*, vol. MTT-17, pp. 552–562, Aug. 1969.
- [4] J. W. Bandler, T. V. Srinivasan, and C. Charalambous, "Minimax optimization of networks by grazor search," *IEEE Trans. Microwave Theory Tech.*, vol. MTT-20, pp. 596–604, Sept. 1972.
- [5] J. W. Bandler and C. Charalambous, "Practical least p th optimization of networks," *IEEE Trans. Microwave Theory Tech.*, vol. MTT-20, pp. 834–840, Dec. 1972.
- [6] C. Charalambous and J. W. Bandler, "New algorithms for network optimization," *IEEE Trans. Microwave Theory Tech.*, vol. MTT-21, pp. 815–818, Dec. 1973.
- [7] M. J. D. Powell, "Problems related to unconstrained optimization," in *Numerical Methods for Unconstrained Optimization*, W. Murray, Ed., Chapt. 3. London, England: Academic Press, 1972.
- [8] K. Madsen, "An algorithm for minimax solution of overdetermined systems of non-linear equations," to be published in *J. Inst. Math. Appl.*
- [9] M. J. D. Powell, "The minimax solution of linear equations subject to bounds on the variables," AERE Haswell, Oxfordshire, England, Rep. C.S.S. II, Dec. 1974.
- [10] V. A. Monaco and P. Tiberio, "On linear network scattering matrix sensitivity," *Alta Freq.*, vol. 39, pp. 193–195, Feb. 1970.
- [11] J. W. Bandler and R. E. Seviara, "Wave sensitivities of networks," *IEEE Trans. Microwave Theory Tech.*, vol. MTT-20, pp. 138–147, Feb. 1972.
- [12] S. W. Director and R. A. Rohrer, "The generalized adjoint network and network sensitivities," *IEEE Trans. Circuit Theory*, vol. CT-16, pp. 318–323, Aug. 1969.
- [13] S. W. Director and R. A. Rohrer, "Automated network design—The frequency-domain case," *IEEE Trans. Circuit Theory*, vol. CT-16, pp. 330–337, Aug. 1969.
- [14] E. Hammershaimb, P. Jeppesen, and H. Schjær-Jacobsen, "Computer-aided design of broad band reflection type amplifiers," *Int. J. Circuit Theory Appl.*, vol. 2, pp. 261–268, Sept. 1974.

+



Kaj Madsen was born in Denmark in 1943. He received the cand. scient. degree in mathematics from the University of Aarhus, Aarhus, Denmark, in 1968.

He has been a Lecturer in numerical analysis at the Technical University of Denmark, Lyngby, since 1968, apart from the academic year 1973–1974, when he was at AERE Harwell, Didcot, England. His fields of interest in teaching and research are optimization and interval analysis.

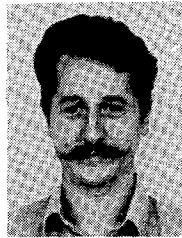


Hans Schjær-Jacobsen was born in Løgumkloster, Denmark, on December 30, 1943. After being educated as an electronics technician, he received the M.Sc. degree in electrical engineering from the Technical University of Denmark, Lyngby, Denmark, in 1972. At present he is with the Electromagnetics Institute, Technical University of Denmark, where he is working toward the Ph.D. degree.

He has carried out research in the fields of analysis and computer-aided design of antennas, microwave reflection amplifiers, and microwave filters. From 1972 to 1973, he worked on a research contract with ESTEC concerning multiple beam satellite antennas. His current research interest is in the

development and application of numerical optimization methods for designing antennas and circuits.

+



Jørgen Voldby was born in Slagelse, Denmark, on October 24, 1946. He received the M.Sc. and Ph.D. degrees in electrical engineering from the Technical University of Denmark, Lyngby, Denmark in 1972 and 1975, respectively.

From 1972 to 1975, he worked on microwave circuit design and microwave radiometry at the Electromagnetics Institute, Technical University of Denmark. At present he is serving his compulsory military service.

Multiparameter Large-Change Sensitivity Analysis and Systematic Exploration

K. H. LEUNG, MEMBER, IEEE, AND ROBERT SPENCE, MEMBER, IEEE

Abstract—The effect on linear circuit response of simultaneous changes in a number (m) of components must often be computed. Two efficient methods for predicting this effect are examined. It is shown that the computational cost of predicting the effect of each set is approximately G_m , where G_m is the cost of a Gaussian elimination of an $m \times m$ matrix. However, if the sets represent combinations of relatively few individual component changes, then systematic exploration is shown to reduce the computational cost *per set* to the order of 2.

I. INTRODUCTION

THE NEED to compute the effect of component parameter change on circuit response arises from the frequent occasions during design and use when component values change either parasitically, manually or automatically (as in circuit optimization). In response to this need, sensitivity algorithms have been devised for calculating the effect of small changes in one or more parameters within a linear circuit [1]–[3]. For *large* changes, algorithms have

been proposed and investigated for changes in one [1], [4] or more [1], [5], [6] parameters, but there still exists a need for further assessment and comparative evaluation.

The effect of *simultaneous* large changes in more than one parameter is frequently of interest. The circuit designer may be interactively and dynamically adjusting a number of parameters in order to achieve a desired circuit response. Or, the changes may be automatic, as in a Monte-Carlo statistical circuit analysis [7]. The need to examine the consequence of change in the physical properties (e.g., temperature, doping level) of a circuit also involves the exploration of simultaneous parameter changes [8], as does the calculation of performance contours [9].

This paper examines two algorithms originally employed to predict the effect of single large parameter changes in a linear circuit, and determines their efficiency when extended to deal with simultaneous multiparameter variation. One outcome is an extremely efficient algorithm which is appropriate when the sets of component changes represent *combinations* of individual component changes. Engineering applications of this approach—known as *systematic exploration*—are briefly illustrated.

Manuscript received May 21, 1974; revised November 19, 1974 and March 8, 1975.

The authors are with the Department of Electrical Engineering, Imperial College, Exhibition Road, London SW7 2BT, England.