

In vivo imaging of the cyclic changes in cross-sectional shape of the ventricular region of pulsating embryonic heart tubes from the initial phase of ventricular trabeculation
[invited]

Männer, Jörg; Thrane, Lars; Norozi, Kambiz; Yelbuz, T. Mesud

Publication date:
2009

Document Version
Publisher's PDF, also known as Version of record

[Link back to DTU Orbit](#)

Citation (APA):

Männer, J., Thrane, L., Norozi, K., & Yelbuz, T. M. (2009). In vivo imaging of the cyclic changes in cross-sectional shape of the ventricular region of pulsating embryonic heart tubes from the initial phase of ventricular trabeculation: [invited]. Poster session presented at 104th Annual Meeting of the Anatomische Gesellschaft : March 27-30, Antwerpen, Belgium, .

DTU Library
Technical Information Center of Denmark

General rights

Copyright and moral rights for the publications made accessible in the public portal are retained by the authors and/or other copyright owners and it is a condition of accessing publications that users recognise and abide by the legal requirements associated with these rights.

- Users may download and print one copy of any publication from the public portal for the purpose of private study or research.
- You may not further distribute the material or use it for any profit-making activity or commercial gain
- You may freely distribute the URL identifying the publication in the public portal

If you believe that this document breaches copyright please contact us providing details, and we will remove access to the work immediately and investigate your claim.

Joint Meeting 2009

Anatomische Gesellschaft –
Nederlandse Anatomen Vereniging



104th Annual Meeting of the
Anatomische Gesellschaft

March 27-30, 2009, Antwerpen, Belgium



104th International Meeting



Universiteit
Antwerpen



NAV



UNCOMPROMISING QUALITY.

Fine Science Tools is committed to serving the world's scientific and biomedical research communities with a full range of precision surgical and micro-surgical instruments. Unparalleled quality and customer service has made us the leading global distributor of fine European surgical tools.

finescience.de
+49 (0) 6221 905050

FINE SURGICAL INSTRUMENTS FOR RESEARCH™

F · S · T®
FINE SCIENCE TOOLS

**Programme of the Joint Meeting 2009
Anatomische Gesellschaft – Nederlandse Anatomen Vereniging
104th Annual Meeting of the Anatomische Gesellschaft
Antwerpen, Belgium March 27-30, 2009**

Main Topic I:
(Neuro-) Immune Biology

Main Topic II (Heart Repair Symposium):
Heart Development, Angio- and Vasculogenesis

Papers and posters from all branches of anatomy

Symposia:

Leopoldina Symposium:
Cross-talk between the nervous and immune system
March 27, 2009, 01:00 -05:00 p.m.

COST B30 Symposium:
Animal models in research on neurodegeneration and neuroplasticity
March 29-30, 2009

The Anatomical Record/Wiley Symposium:
Respiratory biology
March 29, 2009

Flemish Elbow and Shoulder Surgeons Society (FLESSS) Symposium:
Functional and clinical anatomy of the elbow- and shoulder joint
March 28, 2009

Meeting Place:

University of Antwerpen
Middelheimcampus, Middelheimlaan 1, 2020 Antwerpen
Groenenborgercampus, Groenenborgerlaan 171, 2020 Antwerpen

Opening Ceremony:

Friday, March 27, 2009 – 06:00 p.m.
Aula J Fabre – Middelheimcampus

Welcome Reception

Congress Dinner

Sunday, March 29, 2009 – 08:30 p.m.
Ramada Plaza Antwerp Hotel

Business Meeting

Saturday, March 28, 2009 – 06:30 p.m.
Lecture Room T103

Opening Ceremony

06:00 p.m.

Words of Welcome

President of the Anatomische Gesellschaft
Prof. Dr. Jean-Pierre Timmermans

past President of the Nederlandse Anatomen Vereniging
Prof. Dr. Wout Lamers

Prof. Dr. Cathy Berx
Governor of the Province of Antwerpen

Prof. Dr. Alain Verschoren
Rector of the University of Antwerpen

Prof. Dr. Frans Van Meir
Dean of the Faculty of Biomedical, Pharmaceutical and Veterinary Sciences

Musical Interlude

Opening Ceremony Lecture

Prof. Dr. Jean-Pierre Timmermans

"Quantitative output parameters and rankings: the main future targets for medical faculties and anatomy departments?"

Bargmann Prize Award

Lecture(s) of Laureate(s)

Musical Interlude

Welcome reception and Get-together

13:00 – 17:10

Leopoldina symposium

13:00

Drenckhahn D, Würzburg (Germany)

Welcome on behalf of the German Academy of Sciences
Leopoldina

13:15 – 15:10

Session I

Chair: *Lüttjen-Drecoll E, Erlangen (Germany) Timmermans J-P, Antwerp (Belgium)*

13:15

1a

Carmeliet P, Leuven (Belgium)

Neurovascular control in health and disease

14:00

1b

Niederkorn J, Dallas (USA)

Immune privilege of the eye: "There is something funny about aqueous humor"

14:45

2

Lüttjen-Drecoll E, Erlangen (Germany)

Expression of Podoplanin and other lymphatic markers in the human anterior eye segment

15:10 – 15:25

Coffee Break

15:25 – 17:10

Session II

Chair: *Neuhuber W, Erlangen (Germany)*

15:25

3

Nitsch R, Berlin (Germany)

Axonal damage: harm and help from the immune system

16:10

4

Boeckxstaens G, Leuven (Belgium)

Neuromodulation of gut inflammation

16:55

Concluding remarks

18:00

Opening Ceremony: Aula J Fabre – Middelheimcampus

<i>Main topic I, Session I</i>	08:30 - 10:45
<i>Main topic I, Session II</i>	11:15 - 12:30
<i>Main topic I, Session III/Neuroanatomy/Neurobiology (I)</i>	14:00 - 15:00
<i>Neuroanatomy/Neurobiology (II)</i>	15:45 - 16:45
<i>Poster Session I (Room S310/311)</i>	17:00 - 18:30
<i>Business Meeting Anatomische Gesellschaft</i>	18:30 - 19:30

08:30 – 10:45 Main topic I – Session I
Chair: Neuherber WL, Erlangen (Germany)

-
- | | | |
|-------|---|---|
| 08:30 | 5 | Bechmann I, Frankfurt am Main (Germany)
Immune privilege and blood-brain barrier: concepts and misconceptions |
| 09:15 | 6 | Jones K, Maywood (USA)
CD4+T cell-mediated neuroprotection following peripheral nerve injury |
| 10:00 | 7 | Weihe E, Marburg (Germany)
From neuroimmune pathogenesis to neuroimmune protection, pharmacotherapy and prevention of disease |

10:45 – 11:15 Coffee Break

11:15 – 12:30 Main topic I – Session II
Chair: Bechmann I, Frankfurt am Main (Germany)

-
- | | | |
|-------|----|--|
| 11:15 | 8 | Hendrix S, Hasselt (Belgium)
T helper cells stimulate axon regeneration via interleukin-4 in an AKT/MAPK-dependent manner |
| 11:30 | 9 | Mikulski Z, Zaslona Z, Cakarova L, Hartmann P, von Wulffen W, Kummer W, Giessen (Germany)
Serotonin acutely elevates intracellular calcium concentration and augments CCL2 production in murine alveolar macrophages |
| 11:45 | 10 | Gebert A, Blessenohl M, Schueht A, Orzekowsky R, Huettmann G, Klinger A, Lübeck (Germany)
Intravital observation of antigen transport by intestinal M cells - a 3D time lapse study in mice |
| 12:00 | 11 | Van Op den Bosch J, Van Nassauw L, Van Marck E, Timmermans J-P, Antwerp (Belgium)
Somatostatin modulates mast cell-induced responses in murine spinal neurons |
| 12:15 | 12 | Kuerten S, Laurentius L, Gruppe T, Lehmann P, Addicks K, Cologne (Germany) / Cleveland (USA)
In MP4-induced EAE of C57BL/6 mice functional deficits correlate with structural CNS damage |

12:30 – 14:00 LUNCH

14:00 – 15:00		Main topic I – Session III/Neuroanatomy/Neurobiology – Session I Chair: Rune G, Hamburg (Germany)
14:00	13	Bergwerf I, De Vocht N, Tambuyzer B, Verschueren J, Reekmans K, Daans J, Ibrahim A, Van Tendeloo V, Chatterjee S, Goossens H, Jorens P, Baekelandt V, Ysebaert D, Van Marck E, Berneman Z, Van Der Linden A, Ponsaerts P, Antwerp/Leuven (Belgium) Reporter gene-expressing bone marrow-derived stromal cells are immune-tolerated following implantation in the central nervous system of syngeneic immunocompetent mice.
14:15	14	Kipp M, Clarner T, Groebe A, Beyer C, Aachen (Germany) The cuprizone model as tool for studying demyelination in multiple sclerosis
14:30	15	Schomerus C, Laedtker E, Korf H, Wicht H, Frankfurt am Main (Germany) Expression of the clock genes <i>amphiPer</i> and <i>amphiBmal</i> in the lancelet <i>Branchiostoma lanceolatum</i>
14:45	16	Hausott B, Vallant N, Klimaschewski L, Innsbruck (Austria) Enhanced fibroblast growth factor receptor signaling promotes adult axon growth
15:15 – 15:45		Coffee Break
15:45 – 16:45		Neuroanatomy / Neurobiology- Session II Chair: Beyer C, Aachen (Germany)
15:45	17	Pfeffer M, Ansari N, Deller T, Korf H, Müller C, von Gall C, Frankfurt am Main (Germany) The mammalian molecular clockwork controls rhythmic expression of the ryanodine receptor
16:00	18	Heimrich B, Wu Y, Schmid S, Fischer H, Schwemmler M, Freiburg (Germany) Release of a neuroprotective factor from Sprague-Dawley hippocampus promotes survival of BDV-infected dentate granule cells of Lewis rats in vitro
16:15	19	Fester L, Hannig J, Jarry H, Rune G, Prange-Kiel J, Hamburg/Goettingen (Germany) / Dallas (USA) How to explain estrus cyclicity of neurogenesis in the hippocampus?
16:30	20	Yasuo S, Koch M, Schmidt H, Ziebell S, Geisslinger G, Korf H, Frankfurt am Main (Germany) Identification of an endocannabinoid system in the hypophysial pars tuberalis of the syrian hamster, a photoperiodic species
17:00 – 18:30		Poster Session I
18:30 – 19:30		Business Meeting (Lecture Room T103)

Cell Biology (I)

11:15 - 12:45

Poster Session I (Room S310-311)

17:00 - 18:30

11:15 – 12:45	Cell Biology (I) Chair: Wilting J, Goettingen (Germany)
---------------	---

11:15	21 Vanhecke D, Widmer C, Haenni B, Wahlers T, Nyengaard J, Gundersen H, Ochs M, Bern (Switzerland) / Cologne (Germany) / Aarhus (Denmark) Quantitative characterization of alveolar epithelial type II cells and lamellar bodies in the human lung by stereology and electron tomography
11:30	22 Schlegel N, Waschke J, Würzburg (Germany) Impaired cAMP and Rac 1 signalling cause TNF-alpha-induced endothelial barrier breakdown in microvascular endothelium
11:45	23 Banaz-Yasar F, Bongartz B, Singer B, Schumann G, Ergün S, Essen/Langen (Germany) Line-1 mediated retrotransposition events influence endothelial but not epithelial cell proliferation
12:00	24 Efthymiadis A, Heupel WM, Schlegel N, Müller T, Baumer Y, Baumgartner W, Drenckhahn D, Waschke J, Würzburg/Aachen (Germany) Cyclic tandem peptides targeting VE-cadherin transinteraction stabilize endothelial barrier function
12:15	25 Becker J, Wilting J, Goettingen (Germany) TGFBI inhibits proliferation and invasion of neuroblastoma by MYCN-independent up regulation of TFPI2
12:30	26 Spindler V, Heupel W, Khan S, Drenckhahn D, Waschke J, Würzburg (Germany) Desmocollin 3-mediated binding is crucial for keratinocyte cohesion and epidermal integrity

12:30 – 14:00	Lunch break
17:00 – 18:30	Poster Session I
18:30 – 19:30	Business Meeting (Lecture Room T103)

FLESSS Symposium - Session I

14:00 – 15:15

FLESSS Symposium - Session II

15:45 – 18:15

14:00 – 15:15

FLESSS Symposium – Session I

Chair: **Van Glabbeek F, Antwerp (Belgium)**

14:00

27

Carmichael S, Sanchez-Sotelo J, O'Driscoll S, Rochester (USA)

Clinically relevant anatomy of the upper arm and elbow

14:45

28

Dierickx C, Ceccarelli E, Conti M, Vanlommel J, Castagna A, Hasselt (Belgium) / Milan (Italy)

Form variants of the proximal end of the caput longum of the biceps brachii

15:15 – 15:45

Coffee Break

15:45 – 18:15

FLESSS Symposium – Session II

Chair: **Hubens G, Antwerp (Belgium)**

15:45

29

De Wilde L, Ghent (Belgium)

Surgical anatomy of the glenoid cavity and scapula

16:15

30

Pouliart N, Brussels (Belgium)

Functional anatomy of the glenohumeral joint in relation with instability: new insights

16:45

31

Van Hoof T, Gomes G, Audenaert E, Verstraete K, Kerckaert I, D'Herde K, Ghent (Belgium)

3D computerized model for measuring strain and displacement of the brachial plexus following placement of reverse shoulder prosthesis

17:15

32

Amit B, Antwerp (Belgium)

Osteology of the clavicle and clinical implications

17:45

33

Gomes G, Antwerp (Belgium)

Statistical shape analysis of the scapula and humerus based on a large database of scanned bones

<i>Main topic II, Session I</i>	08:30 - 10:00
<i>Main topic II, Session II</i>	10:30 - 12:00
<i>Main topicII, Session III</i>	13:15 - 14:45
<i>Main topic II, Session IV</i>	15:15 - 17:00
<i>Poster Session II (Room U310)</i>	17:00 - 18:30

08:30 – 10:00 Main Topic II – Session I
Chair: Moorman A, Amsterdam (The Netherlands)

08:30 34 **Davidson B, Tucson (USA)**
 Comprehensive analysis of the heart gene network in the basal chordate, *Ciona intestinalis*

09:15 35 **Bakkers J, Utrecht (The Netherlands)**
 Evolution of cardiac chambers: lessons from zebrafish

10:00 – 10:30 Coffee Break

10:30 – 12:00 Main Topic II – Session II
Chair: Lamers W, Amsterdam (The Netherlands)

10:30 36 **Christoffels V, Amsterdam (The Netherlands)**
 Development of the cardiac compartments in mammals

11:15 37 **Yutzey K, Cincinnati (USA)**
 Development of the cardiac valves

12:00 – 13:15 LUNCH

13:15 – 14:45 Main Topic II – Session III
Chair: Yutzey K, Cincinnati (USA)

13:15 38 **van den Berg G, Amsterdam (The Netherlands)**
 Reconstructing the heart: growth of the embryonic heart tube

14:00 39 **Ergün S, Essen (Germany)**
 Endothelial and hepatopoietic progenitor cells: fate determining partners for tumour cells

14:45 – 15:15 Coffee Break

15:15 – 17:00	Main Topic II – Session IV Chair: Ergün S, Essen (Germany)
---------------	--

15:15	40 Palubinskiene J, Kipp M, Valanciute A, Salomskaite-Davaliene S, Graf von Keyserlingk D, Kaunas/Alytus (Lithuania) / Aachen (Germany) Vital microscopic morphometry applied to the heart of hen's embryo in reference to early function of the endocardial cushion
15:30	41 Djonov V, Fribourg (Switzerland) Intussusceptive angiogenesis contributes to tumor escape and recovery after anti VEGF treatment and ionizing radiation
15:45	42 Sedmera D, Sebestova B, Machalek J, Prague (Czech Republic) Primary ring of ventricular conduction system and effect of hemodynamic loading upon its function
16:00	43 Balnyte I, Prescher A, Valanciute A, Graf von Keyserlinkgk D, Kaunas (Lithuania) / Aachen (Germany) Chicken's heart in early development forms structures even distant
16:15	44 Frindte JN, Scheffrahn I, Schmid K, Reutter W, Ergün S, Singer BB, Essen/Berlin (Germany) Endothelial and epithelial characterization of CD26 in prostate cancer tissues
16:30	45 Männer J, Thrane L, Norozi K, Yelbuz M, Göttingen/Hanover (Germany) In vivo imaging of the cyclic changes in cross-sectional shape of the ventricular region of pulsating embryonic heart tubes from the initial phase of ventricular trabeculation
16:45	46 Puisoru M, Fatu C, Fatu A, Fatu R, Vasca B, Fatu I, Iasi (Romania) Angiogenesis in hyperplastic endometrium

17:00 – 18:30	Poster Session II
---------------	-------------------

<i>COST-B30 Symposium, Session I</i>	08:45 - 10:00
<i>COST-B30 Symposium, Session II</i>	10:30 - 12:00
<i>COST-B30 Symposium, Session III</i>	13:15 - 14:45
<i>COST-B30 Meeting Workshops I – IV</i>	15:15 - 16:00
<i>COST-B30 Meeting Management Committee</i>	16:00 - 17:00
<i>Poster Session II (Room U310)</i>	17:00 - 18:30

08:45 – 10:00 *COST-B30 Symposium, Session I*
Chair: Pochet R, Brussels (Belgium)

08:45 **Delgado JM, Sevilla (Spain)** – Welcome

09:00 **Pochet R, Brussels (Belgium)** – Introduction

09:15 47 **Hannan A, Melbourne (Australia)**
Molecular mediators and environmental modulators of pathogenesis
in Huntington's disease

10:00 – 10:30 Coffee Break

10:30 – 12:00 *COST-B30 Symposium, Session II*
Chair: Michetti F, Rome (Italy)

10:30 48 **Brion J, Brussels (Belgium)**
The mice models for Alzheimer's disease

11:15 49 **Mitrecic D, Pochet R, Brussels (Belgium)**
The rat model for amyotrophic lateral sclerosis and its potential in
development of stem cell therapy

12:00 – 13:15 LUNCH

13:15 – 14:45		COST-B30 Symposium, Session III Chair: Delgado JM, Sevilla (Spain)
13:15	50	Michetti F, Rome (Italy) A toxin-induced experimental model of selective hippocampal degeneration
14:00	51	Barcal J, Cendelin J, Korelusova I, Tuma J, Vozeh F, Pilsen (Czech Republic) The effect of NMDA glutamate receptor blockade in lurcher mutant mice during two periods of their ontogeny on hippocampal long term potentiation (LTP)
14:15	52	Jay T, Paris (France) Restoring appropriate cognitive function and plasticity in circuits associated with dysfunctions in coping with stress : a new approach to treat mood disorders
14:30	53	Martinez-Millán L, Gerrikagoitia I, Carril I, Lejona – Vizcaya (Spain) The superior colliculus as a model for plasticity and regeneration
14:45 – 15:15		<i>Coffee Break</i>
15:15 – 16:00		<i>COST-B30 Workshops I – IV, Separate sessions of the different working groups in lecture rooms T105 (WG1), T129 (WG2), T148 (WG3), and U025 (WG4), discussion of Joint Projects of WG1-4</i>
16:00 – 18:00		<i>COST-B30 Meeting Management Committee, lecture room U025</i>
17:00 – 18:30		<i>Poster Session II</i>

<i>Anatomical Record Symposium, Session I</i>	10:30 - 12:00
<i>Anatomical Record Symposium, Session II</i>	13:15 - 14:45
<i>Anatomical Record Symposium, Session III</i>	15:15 - 16:15
<i>Poster Session II (Room U310)</i>	17:00 - 18:30

10:30 – 12:00 Anatomical Record Symposium - Session I
Chair: Adriaensen D, Antwerp (Belgium)

10:30 54 **Lee LY, Lexington (USA)**
Pulmonary C-fiber sensory nerves: properties and function

11:15 55 **Kummer W, Giessen (Germany)**
The cholinergic component in pulmonary epithelia/endothelia

12:00 – 13:15 LUNCH

13:15 – 14:45 Anatomical Record Symposium - Session II
Chair: Kummer W, Giessen (Germany)

13:15 56 **Adriaensen D., Antwerp (Belgium)**
Molecular live cell imaging of the airway epithelium: the pulmonary neuroepithelial body microenvironment

14:00 57 **Albertine K, Salt Lake City (USA)**
Neonatal lung biology/pathology

14:45 – 15:15 Coffee Break

15:15 – 16:15 Anatomical Record Symposium - Session III
Chair: Albertine K., Salt Lake City (USA)

15:15 58 **Karnati S, Baumgart-Vogt E, Giessen (Germany)**
Disturbance of distal airway morphogenesis and Clara cell function by interference with PPAR- and Wnt-signalling due to peroxisome deficiency

15:30 59 **Nassenstein C, Taylor-Clark T, Myers A, Ru F, Bettner W, Udem B, Giessen (Germany) / Baltimore (USA)**
Placodal and neural crest vagal C-fibers innervating murine airways: localization and phenotypic differences

15:45 60 **Krasteva G, Schlenz H, Wiegand S, Kummer W, Giessen (Germany)**
Caveolin-1 is involved in tracheal but not bronchial cholinergic constriction in the mouse

16:00 61 **Haberberger R, Tabeling C, König P, Runciman S, Gibbins I, Witzenrath M, Adelaide (Australia) / Berlin/Lübeck (Germany)**
Sphingosine kinase 1 deficiency leads to increased remodelling and responsiveness of pulmonary vasculature in chronic airway inflammation

17:00 – 18:30 Poster session II



Antikörper für Immunhistologie, Immunfluoreszenz, Western Blot und vieles mehr
finden sie leicht über unsere neu gestaltete Online-Suche unter

www.acris-antibodies.com

einfache Suche – beste Qualität – beste Preise

Mehr als 80.000 Primär-Antikörper, über 20.000 Proteine

Wir testen auch auf Paraffin

Mehr als 10.000 „paraffingängige“ Antikörper

- HIF
 - Amelogenin
 - Aromatase
 - Axonal Growth Cones
 - BRCA1
 - Calcitonin Receptor
 - Cannabinoid Receptor
 - CCR1 bis -4
 - CCR6, 8 bis -11
 - CD163
 - CCRL1 und -2
 - Collagens
 - Estrogen beta Receptor
 - Fibroblasts (PHB)
 - GnRH-Receptor
 - GPCRs
 - Kallikrein 6 und 11
 - LH-Receptor
 - Lyve-1
 - Makrophages (CD163)
 - Maspin
 - MCH
 - Podoplanin
 - Prion Protein (PrP)
 - Prox-1
 - PSA
 - TLR2, 3, 5 und 9
 - VEGFR1, -2 und -3
- und viele mehr...

**100% Qualität
garantiert!**

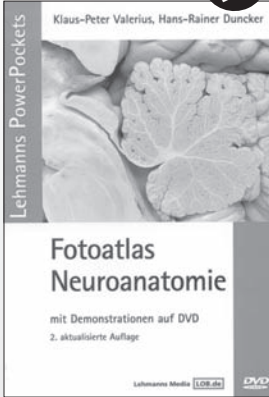
Zufrieden oder Geld
zurück für getestete
Spezies und
Applikationen.

› 100.000 Produkte online: www.acris-antibodies.com
Email: info@acris-online.de Hotline: 0800/227 4746

Anatomie

LEHMANN'S
FACHBUCHHANDLUNG

mit
DVD



Klaus-Peter Valerius / Hans-Rainer Duncker

Fotoatlas Neuroanatomie

mit Demonstrationen auf DVD

2., aktual. Aufl. 2007, lehmanns media, 348 S., 165 farb. Abb., inkl. 180-minütiger DVD, kart., € 24,95

ISBN 978-3-86541-162-4

Der Fotoatlas Neuroanatomie ist durch die Verzahnung von Buch und Film in besonderer Weise geeignet, dem Benutzer die Anatomie des zentralen Nervensystems näherzubringen. Auf der DVD sind Filmsequenzen zu sehen, die Strukturen und Zusammenhänge sichtbar machen, welche zuvor in dieser Form noch nicht dargestellt werden konnten. Die Präparationen zeigen detailliert anatomische Zusammenhänge auf und ermöglichen so ein tiefgreifendes Verständnis der Neuroanatomie. Mit der DVD hält jeder Anatom ein einzigartiges Medium zur Wissensvermittlung in der Hand und kann so dem Lernenden eindrucksvoll die Neuroanatomie in dreidimensionaler Form näher bringen.

Stimmen zum Buch:

Sehr gutes, ergänzendes Lehrbuch zum Präparierkurs. Fantastische Ergänzung zum allgemeinen Atlas.
Dr. med. J. Neufang, LMU Anatomische Anstalt, München

Hervorragender Bildatlas für die Neuroanatomie.

PD Dr. H.-P. Horn, Institut für Anatomie, Universitätsklinikum Essen

Klaus-Peter Valerius

Fotoatlas Anatomie

Mit DVD zum Präparierkurs

3., aktual. Auflage 2005, lehmanns media, 552 S., durchg. farb. Abb., inkl. 240-minütiger DVD, kart., € 24,95

ISBN 978-3-86541-087-0

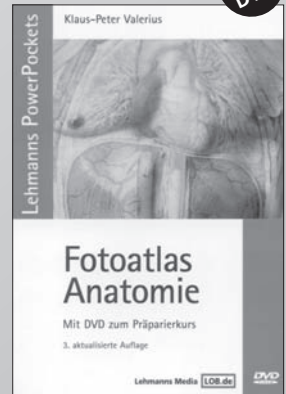
Stimmen zum Buch:

[...] Zusammenfassend kann ich zum Ergebnis dieses Fotografischen Atlas und DVD nur gratulieren und bin sicher, dass „der Valerius“ sich aufgrund der digitalen Darstellung der Präparation, der gelungenen Verbindung von Buch und DVD sowie des günstigen Preises bei hoher Qualität die Stellung eines echten „Studenten-/innenbuches“ erarbeiten werden wird.

PD Dr. K. Wewetzer, MMH Hannover

Endlich das Medium „PC + DVD“ sinnvoll eingesetzt. Hervorragend zur Vorbereitung des Präp-Kurses. Unschlagbarer Preis.

Dr. U. Rausch, Institut für Anatomie und Zellbiologie, Marburg



mit
DVD

24 Stunden geöffnet:

www.lehmanns.de
&
www.LOB.de

Lehmanns Fachbuchhandlungen in 22 Städten

Aachen • Berlin • Dresden • Düsseldorf • Erlangen • Essen
Freiburg • Gießen • Göttingen • Halle • Hamburg • Hannover
Heidelberg • Köln • Leipzig • Mainz • Mannheim • Marburg
München • Münster • Regensburg • Ulm

<i>Neuroanatomy / Neurobiology (III)</i>	08:45 - 10:00
<i>Cell Biology (II)</i>	10:30 - 12:00
<i>Gross Anatomy / Clinical Anatomy</i>	13:30 - 15:15
<i>Closing Session and Poster Prizes</i>	15:30 - 15:45

08:45 – 10:00 Neuroanatomy / Neurobiology (III)
Chair: Korf H-W, Frankfurt (Germany)

-
- 08:45 62 **Weber G, Buseck (Germany)**
"SprayCon CS" - A new method for whole body conservation in a closed system (technical lecture)
- 09:00 63 **Schrödl F, Brehmer A, Neuhuber W, Nickla D, Erlangen (Germany) / Boston (USA)**
Influences of the autonomic nervous system on the compensatory responses of the chick eye to defocus: single- and double-lesions studies of the pterygopalatine ganglion
- 09:15 64 **Johann S, Kampmann E, van Neerven S, Mey J, Beyer C, Aachen (Germany)**
Anti-inflammatory effect of retinoic acid on prostanoid metabolism in cortical astrocytes
- 09:30 65 **Arnold S, Singh S, Misiak M, Roemgens A, Beyer C, Aachen (Germany)**
Gender-specific regulation of mitochondria morphology and function in astrocytes under toxic conditions
- 09:45 66 **Reekmans K, de Vocht N, Tambuyzer B, Bergwerf I, Daans J, Chatterjee S, Jorens P, Ysebaert D, Van Marck E, Van Der Linden A, Berneman Z, Ponsaerts P, Wilrijk (Belgium)**
Multimodal imaging of adherently cultured neural stem/progenitor cell implants in the brain of mice

10:00 – 10:30 Coffee break

10:30 – 12:00 Cell Biology (II)
Chair: Baumgart-Vogt E, Giessen (Germany)

-
- 10:30 67 **Turan Z, Irmak S, Ergün S, Essen (Germany)**
Urinary proteomics via 2-d gel electrophoresis in human bladder cancer and chronic cystitis
- 10:45 68 **Müller S, Pufe T, Tohidnezhad M, Brandenburg L, Varoga D, Wruck C, Aachen/Kiel (Germany)**
Antirheumatic effects of sulforaphane: decrease of inflammation, proliferation and MMP activation

11:00	69	Brandenburg L, Seyferth S, Wruck C, Koch T, Lucius R, Pufe T, Aachen/Kiel/Magdeburg (Germany) Involvement of phospholipase D 1 and 2 in the activity and signal transduction of formyl-peptide-receptors in the human colonic cell line HT29
11:15	70	Tohidnezhad M, Lippross S, Varoga D, Podschun R, Wruck C, Bornemann J, Bovi M, Herrmanns Sachweh B, Brandenburg L, Breuer F, Beckmann R, Jansen S, Pufe T, Aachen/Kiel (Germany) The role of platelet rich plasma (PRP) in fracture healing
11:30	71	Waisbrod G, Müller D, Middendorff R, Giessen (Germany) Cross-talk between natriuretic peptide receptors and its impact on vasorelaxation
11:45	72	Csaki C, Matis U, Shakibaei, Munich (Germany) Curcumin promotes an adequate microenvironment for MSC differentiation to chondrocytes during osteoarthritis
12:15 – 13:30		LUNCH
13:30 – 15:15		Gross Anatomy / Clinical Anatomy Chair: Pufe T, Aachen (Germany)
13:30	73	Löffler S, Wacker A, Dahl P, Scheinert D, Spanel-Borowski K, Leipzig (Germany) Multiple variations of arteries in the lower leg should be considered for pedal bypasses in case of the diabetic foot syndrome
13:45	74	Seceleanu A, Dudea S, Preda D, Seceleanu R, Seceleanu R, Cluj-Napoca (Romania) Anatomo-clinical correlations in orbital varices
14:00	75	Narain F, van Zwieten K, Gervois P, Lippens P, Op 't Eijnde B, Vandersteen M, Colla P, Palmers Y, Mewis A, Lamur K, Paramaribo (Suriname) / Diepenbeek/Hasselt (Belgium) Features of osteology in stylopodium and zeugopodium of <i>Didelphis marsupialis</i>
14:15	76	Antohe I, Iasi (Romania) Functional organization of the foramen lacerum
14:30	77	Steinke H, Hammer N, Böhme J, Stadler J, Slowik V, Josten C, Spanel-Borowski K, Leipzig/Magdeburg (Germany) The ligaments of the sacro-iliac joint
14:45	78	Wallner C, Dabhoiwala N, DeRuiter M, Lamers W, Amsterdam/Leiden (The Netherlands) A different point of view on pelvic floor function: the levator hiatus
15:00	79	Hesse B, Schilling N, Fischer M, Fröber R, Jena (Germany) Upright trunk posture and bipedalism – adaptations in the lumbar perivertebral musculature
15:30 – 15:45		Closing Session & Poster Prizes

<i>COST-B30 Symposium, Session IV</i>	08:30 - 10:00
<i>COST-B30 Symposium, Session V</i>	10:30 - 12:30
<i>COST-B30 Symposium, Session VI</i>	13:30 - 15:30

08:30 – 10:00 COST-B30 Symposium, Session IV
Chair: Gruart A, Sevilla (Spain)

08:30 80 **Pitkänen A, Kuopio (Finland)**
Molecular basis of epileptogenesis: A journey from gene array to analysis of epilepsy syndrome

09:15 81 **Timmerman V, Antwerp (Belgium)**
Molecular pathomechanisms of inherited peripheral neuropathies

10:00 – 10:30 Coffee break

10:30 – 12:30 COST-B30 Symposium, Session V
Chair: Pluta J, Warsaw (Poland)

10:30 82 **Gruart A, Delgado-García J, Sevilla (Spain)**
An experimental model for cognitive disorders

11:15 83 **Martin J, Murmu M, Gif-sur-Yvette (France)**
In vivo global neurodegeneration follow up using bioluminescence imagery in drosophila

12:00 84 **Pluta R, Ulamek M, Jablonski M, Warsaw/Lublin (Poland)**
Ischemic model of Alzheimer's disease

12:15 – 13:30 LUNCH

13:30 – 15:30 COST-B30 Symposium, Session VI
Chair: Jay T, Paris (France)

13:30 85 **Korczyn A, Tel-Aviv (Israel)**
Animal model of autonomous nervous dysfunction

13:45 86 **Schultzberg M, Stockholm (Sweden)**
Studies on an in vivo model of impaired interleukin-1 signalling

14:00 87 **Hammer N, Steinke H, Slowik V, Hülse R, Stadler J, Böhme J, Spanel-Borowski K, Leipzig/Magdeburg (Germany)**
The sacrotuberous and the sacrospinous ligament - a virtual reconstruction

14:15 88 **Baumgart-Vogt E, Giessen (Germany)**
Neurodegeneration in peroxisomal diseases

14:30 89 **Coprpy S, Groningen (The Netherlands)**
Neural stem cell grafts in a MS animal model

- 14:45 90 **Tambuyzer B, Bergwerf I, Reekmans K, De Vocht N, Daans J, Ysebaert D, Chatterjee S, Van Marck E, Berneman Z, Ponsaerts P, Antwerp/Wilrijk (Belgium)**
Allogeneic stromal cell implantation in brain tissue of immune-competent mice leads to robust microglial activation and subsequent graft elimination.
- 15:00 91 **Barham M, Andermahr J, Majczynski H, Slawinska U, Stützer H, Neiss W, Köln (Germany) / Warsaw (Poland)**
Effects of either preoperative or postoperative or pre- and postoperative treadmill training on the recovery of motor function after immediate repair of the sciatic nerve in rats
- 15:15 92 **Schütz B, Fuchs A, Schneider H, Weihe E, Roepner J, Marburg/Frankfurt (Germany)**
Reductions in KCC2 expression and changes in its intracellular distribution pattern in hypoglossal motor neurons precede tongue motility deficits in the SOD1-G93a mouse model of ALS

10:30 – 12:15		Developmental/Reproductive/Immune Biology Chair: Paulsen F, Halle (Germany)
10:30	93	De Spiegelaeere W, Cornillie P, Van den Broeck W, Ghent (Belgium) Expression of angiogenic growth factors during mesonephric glomerulogenesis
10:45	94	Illig R, Schwarzer C, Fritsch H, Innsbruck (Austria) Aspects of HOXA13, HOXD12 and HOXD13 mRNA expression in human development
11:00	95	Hueller H, Vilser C, Nowicki M, Blumenauer V, Hmeidan F, Jogschies P, Spanel-Borowski K, Leipzig (Germany) Effects of LOX-1 and/or TLR4 activation by oxidized-low-density-lipoprotein (oxLDL) in granulosa cell subtypes
11:15	96	Singer B, Zabel S, Riesbeck K, Suttorp N, Ergün S, Slevogt H, Essen/Berlin (Germany) / Malmö (Sweden) CEACAM1 inhibits toll-like receptor 2-triggered anti-bacterial responses of human pulmonary epithelial cells
11:30	97	König P, Bermbach S, Schiemann F, Petersen F, Rupp J, Lübeck/Borstel (Germany) Cilia-driven transport of particles and bacteria in the airways is preserved in the absence of mucus and control of periciliary fluid volume
11:45	98	Eppler E, Caelters A, Mazel P, Berishvili G, Maclean N, Reinecke M, Zürich (Switzerland) / Southampton (UK) Expression of IGF-I and IGF-II mRNA in various organs of a GH-overexpressing transgenic and wild-type tilapia: paradox reaction of the major immune organ spleen
12:00	99	Gajovic S, Zizic M, Mitrecic D, Pochet R, Zagreb (Croatia) / Brussels (Belgium) Tail bud development and its stem cell properties in the mouse embryo

MAIN TOPIC I (Poster Session I)

- P1 **Koch M, Kreutz S, Böttger C, Ghadban C, Korf H, Dehghani F, Frankfurt am Main (Germany)**
Cannabinoids and their role in neuroprotection
- P2 **Erdogan A, Cevli C, Aydin M, Sevinc O, Çanakkale (Turkey)**
A study on the reflex of mother rats for saving their babies
- P3 **Rusu M, Pop F, Ivascu R, Ciuluivica R, Bucharest (Romania)**
A morphological and topographical study of the trigeminal ganglion neurons in humans, with emphasis on the small-diameter trigeminal neurons

GROSS ANATOMY / CLINICAL ANATOMY (Poster Session I)

- P4 **Selthofer R, Radic R, Nikolic V, Leksan I, Mrcela T, Dinjar K, Osijek (Croatia)**
Dynamic model of cyclic load on fetal membranes in simulated intrauterine conditions
- P5 **Wacker A, Löffler S, Ulrich M, Bräunlich S, Adili F, Feja C, Spanel-Borowski K, Leipzig/Frankfurt (Germany)**
A prominent fibular artery as outflow vessel for crural bypass
- P6 **Schamall D, Cink V, Teschler-Nicola M, Loewe C, Kainberger F, Pretterklieber M, Vienna (Austria)**
Computed tomographical analysis of the internal architecture of the first metatarsal bone: a new application of high-resolution radiographic method for age estimation in historic bones.
- P7 **Kapustin R, Vasilyeva A, Maiskii Belgorodskoi oblasti (Russia)**
Morphogenesis of bone marrow and clinical anatomy of cattle's liver in early postnatal ontogenesis - **withdrawn** -
- P8 **Krikun E, Boldyr V, Kapustin R, Krikun Y, Belgorod/Maiskii Belgorodskoi oblasti (Russia)**
Regional peculiarities in indexes of physical development of Russian children: Moscow and Belgorod regions - **withdrawn** -
- P9 **Chiriac S, Dumitriu A, Iordache I, Unc O, Constanta (Romania)**
Progressive evolution of a forearm sarcoma and its functional impact on the affected anatomical muscle groups- a case report
- P10 **Frandes C, Radu A, Arad (Romania)**
Macroscopic evaluation of indexes of placentas from premature births with fetuses presenting developmental abnormalities

- P11 **Demirel B, Ozsoy U, Utuk A, Donmez O, Antalya (Turkey)**
Three-dimensional digitized location of supraorbital and infraorbital foramina referred to anthropometric and anatomic landmarks: a pilot study
- P12 **Utuk A, Demirel B, Donmez O, Ozsoy U, Antalya (Turkey)**
Digital measurements of the nasal aperture: a pilot study
- P13 **Ozsoy U, Donmez B, Demirel B, Oguz N, Urguden M, Antalya (Turkey)**
The comparison of the femoral curve with femoral nails: a digital analysis
- P14 **Donmez B, Koc P, Ozdemir S, Yaras N, Demir N, Karayalcin B, Oguz N, Antalya/elazig (Turkey)**
The effect of angiotensin receptor blocker on osteoporosis in ovariectomized rat femurs: a pilot study
- P15 **Staszuk C, Bienert A, Kreutzer R, Wohlsein P, Simhofer H, Hanover (Germany) / Vienna (Austria)**
Histological examinations of the equine periodontal ligament with regard to equine odontoclastic tooth resorption and hypercementosis.
- P16 **Zahoi D, Miclaus G, Sztika D, Pop E, Timisoara (Romania)**
Peculiar aspects of the renal venous drainage in the case of the single renal vein. a study on corrosion casts
- P17 **Zahoi D, Miclaus G, Sztika D, Pop E, Timisoara (Romania)**
The segmentary distribution specificity of double renal arteries with relation to their parenchyma penetration points. a study on corrosion casts
- P18 **Saito T, Steinke H, Miyaki T, Sawuti A, Iwabuchi T, Kitayama T, Oi Y, Spanel-Borowski K, Itoh M, Tokyo (Japan) / Leipzig (Germany)**
The analysis of the layout of the posterior ramus of the spinal nerve is worthwhile for surgery in the dorsal region
- P19 **Meermans G, Govaers K, De Weerd W, Bortier H, Antwerp/Dendermonde (Belgium)**
Evaluation of eccentric femoral broaching in primary hip arthroplasty by medulloscopy
- P20 **Niculescu M, Rusu M, Ciobanu I, Stana L, Jianu A, Motoc A, Petrescu C, Niculescu V, Timisoara/Bucharest (Romania)**
Anatomical evidences on the origin and number of the sigmoid arteries
- P21 **Sferdian M, Frandes C, Arad (Romania)**
Discovering the most efficient methods of diagnosis of avascular necrosis of the femoral head
- P22 **Raducan S, Vermesan D, Bolintineanu S, Prejbeanu R, Moise M, Jianu A, Stana L, Motoc A, Timisoara (Romania)**
Anatomic study of the posterior aspect of the knee

- P23 **Cengiz M, Anaç C, Gürer G, Gürer I, Sindel T, Tuncer T, Sindel M, Antalya (Turkey)**
The osteoarthritis sighting localization in old cadaver knee joints: radiological, morphological and histopathological comparison
- P24 **Bordei P, Sapte E, Antohe D, Constanta (Romania)**
Peculiar aspects of the origin of the inferior suprarenal artery
- P25 **Surdu L, Bordei P, Iliescu D, Antohe D, Constanta (Romania)**
The origin of the splenic artery in relation with other classic branches of the celiac trunk
- P26 **Iliescu M, Bordei P, Constanta (Romania)**
Anatomic and imagistic correlations within the lumbar vertebral canal stenosis
- P27 **Sapte E, Bordei P, Indrei A, Constanta (Romania)**
Morphological variations of the renal arteries and their surgical importance
- P28 **State D, Stroica L, Bucharest (Romania)**
Unusual branching pattern of the axillary artery
- P29 **Kovac T, Radic R, Popovic B, Osijek (Croatia)**
Experimental investigation of fractures of thyroid cartilage
- P30 **Suzen B, Yildirim F, Ozsoy U, Demirel B, Arican R, Sarikcioglu L, Ozturk Z, Keser I, Yesilipek A, Ozdem S, Erkilic M, Oguz N, Antalya (Turkey)**
Bone mineral density, hormonal and biochemical measurements in Turkish children with beta-thalassemia major
- P31 **Sindel M, Sindel T, Arican R, Kabaalioglu A, Coskun N, Ceken K, Antalya (Turkey)**
Termination of vena saphena magna; a radiological anatomic study

CELL BIOLOGY (Poster Session I)

- P32 **Stoll C, Rosen C, Endres M, Kaps C, John T, Kohl B, Ertel W, Schulze-Tanzil G, Berlin (Germany)**
Extracellular matrix expression in 2D and 3D cultured tenocytes compared to native tendon tissue
- P33 **Saritas T, Mutig K, Kahl T, Böhlick A, Rampoldi L, Bates J, Kumar S, Bachmann S, Berlin (Germany) / Milan (Italy) / Oklahoma City (USA)**
Tamm-horsfall protein (THP) facilitates trafficking and phosphorylation of kidney Na,K,2Cl-cotransporter (NKCC2)
- P34 **El Sayed K, Kuhne M, Aue A, Marzahn U, Kohl B, John T, Witthuhn A, Haisch A, Stölzel K, Blottner D, Schulze-Tanzil, Berlin (Germany)**
Heterotopic chondrocyte co-cultures: an approach for autologous cartilage repair?



SOMSO
MODELLE
SINCE 1876

We are looking forward
to your visit at our booth at 104th Meeting of
the Anatomical Society in Antwerpen.

Since 1876 are SOMSO Modelle a name for scientific
accuracy and esthetic expression. They are recognized by the
most discerning experts as the ultimate for teaching aids and
scientific demonstration throughout the world.



Malleus



Incus

Stapes



*The three auditory ossicles
cast from natural specimen, in SOMSO-Plast.*

That marvel, the human organ of hearing and balance,
becomes comprehensive thanks to a SOMSO model.

Nature is Our Model

MARCUS SOMMER SOMSO MODELLE GMBH

Friedrich-Rueckert-Strasse 54, 96450 Coburg, Germany
Tel. +49 (0) 95 61 – 8 57 40, Fax +49 (0) 95 61 – 85 74 11
somso@somso.de, www.somso.de

Das anatomische Zeitalter



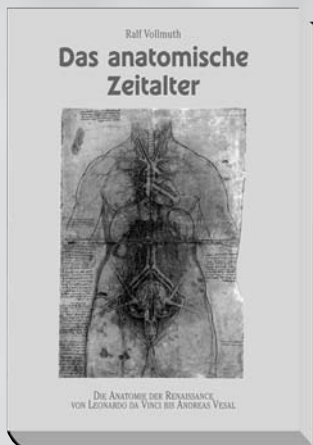
Das vorliegende Buch zeigt auf der Grundlage des aktuellen Forschungsstandes zur Anatomiegeschichte zunächst die Entwicklung der Anatomie von den Anfängen und der Antike bis zum Ausgang des Mittelalters auf.

Den Schwerpunkt bildet jedoch die Darstellung der Anatomiegeschichte in der Renaissance, also im ausgehenden 15. und im 16. Jahrhundert. In dieser Zeit konnte das Fach einen wesentlichen Aufschwung erleben.

Einen Meilenstein bildet aus medizinhistorischer Sicht das anatomische Werk des Leonardo da Vinci, das sowohl inhaltlich wie auch in der zeichnerischen Bewältigung neue Maßstäbe setzte, wenngleich die Wirkung nicht allzu stark gewesen ist, da Leonardo den Plan eines Anatomiebuches nicht realisierte.

Hervorgehoben werden auch andere zeitgenössische Anatomen und Schriftsteller wie beispielsweise Jacobo Berengario da Carpi, Charles Estienne oder Walther Hermann Ryff, die im Zeitraum von etwa 1500-1540 mit ihren Arbeiten den Boden für das bahnbrechende anatomische Buch des Andreas Vesal «De humani corporis fabrica libri septem» aus dem Jahre 1543 bereiteten.

Ein weiterer zentraler Abschnitt ist dem Leben und vor allem dem Werk Vesals gewidmet, bevor in einem abschließenden Kapitel holzschnittartig die unaufhaltsame Entwicklung der Anatomie im 16. und 17. Jahrhundert skizziert wird.



Dieses bemerkenswerte Buch wurde in der „Spiegel-Ausgabe“ Nr. 23/2004 umfassend vorgestellt. Auszüge aus der Rezension:

„In seinem Buch ‚Das anatomische Zeitalter‘ beschreibt der Medizinhistoriker Ralf Vollmuth, wie die Medizin in der ersten Hälfte des 16. Jahrhunderts revolutioniert wurde.“

Weshalb Leonardo seine Zeichnungen nie veröffentlicht hat „und wie es Vesal schließlich gelang, die Lehre der Anatomie neu zu begründen, erklärt Vollmuth in leicht verständlicher Sprache und anhand eindrucksvoller Abbildungen“.

DER SPIEGEL

Ralf Vollmuth, Das anatomische Zeitalter.

Die Anatomie der Renaissance von Leonardo da Vinci bis Andreas Vesal. 185 Seiten

ISBN 978-3-929360-70-7 • 69,00 €



Bestellschrift: InTime Services GmbH, Postfach 13 63, 82034 Deisenhofen,

Telefon (0 89) 8 58 53-8 33, Telefax (0 89) 8 58 53-62-8 33,

E-Mail: merkurbuch@intime-services.de oder über www.fachbuch-direkt.de

- P35 **Reich C, Raabe O, Wenisch S, Bridger P, Arnhold S, Giessen (Germany)**
Comparison of canine bone marrow and adipose derived mesenchymal stem cells
- P36 **Mensing N, Staszyc C, Gasse H, Hanover (Germany)**
Osteogenic differentiation of equine periodontal cells in vitro: semiquantitative determination of mineralization products and quantitative determination of cellular calcium intake
- P37 **Raabe O, Reich C, Wenisch S, Burg-Roderfeld M, Siebert H, Arnhold S, Giessen (Germany)**
Analysing the chondrogenic differentiation potential of equine adipose tissue-derived stem cells
- P38 **Koch M, Bauer K, Tamm E, Regensburg (Germany)**
Pancortin-3 enhances substrate adhesion of podocytes
- P39 **Maronde E, Benz A, Perutzki N, Shajari M, Dehghani F, Frankfurt (Germany)**
Interaction between MEK-1/2 and PI3K contributes to FGF-1-mediated induction of Egr-1 in hippocampal neurons
- P40 **Fuchshofer R, Junglas B, Tamm E, Regensburg (Germany)**
Connective tissue growth factor induces changes in the actin cytoskeleton of human trabecular meshwork cells
- P41 **Köhler E, Sankaranarayanan S, Van Ginneken C, Vermeulen J, Ruijter J, Lamers W, Bruder E, Maastricht/Amsterdam (The Netherlands) / Antwerp (Belgium) / Basel (Switzerland)**
The human neonatal small intestine has the potential for arginine synthesis
- P42 **Tohidnezhad M, Lippross S, Wruck C, Varoga D, Bornemann J, Bovi M, Herrmanns Sachweh B, Brandenburg L, Breuer F, Beckmann R, Jansen S, Pufe T, Aachen (Germany)**
Detection of human beta defensin 2 and 3 in thrombocytes
- P43 **Lembrechts R, Brouns I, Pintelon I, Schnorbusch K, Timmermans JP, Adriaensen D, Antwerp (Belgium)**
Expression of the two-pore-domain mechanogated potassium channels TREK and TRAAK in lungs
- P44 **Kollas A, Baumgart-Vogt E, Giessen (Germany)**
Effects of starvation and phorbol esters on the peroxisomal compartment of RAW264.7 murine macrophages
- P45 **Avula L, Knapen D, Van Op den bosch J, Vergauwen L, Blust R, Van Nassauw L, Timmermans JP, Antwerp (Belgium)**
Expression of mas-related genes (Mrgs) in the normal and inflamed murine ileum

DEVELOPMENTAL BIOLOGY (Poster Session I)

- P46 **Pilmane M, Abola Z, Petersons A, Riga (Latvia)**
Growth factors in the proximal and distal ends of esophagus in children with esophageal atresia (EA)
- P47 **Lasiene K, Valanciute A, Vitkus A, Lasys V, Salomskaite Davalgiene S, Kaunas (Lithuania)**
Morphometric analysis of 2-2.5 year-old guinea pig oocytes
- P48 **Motoc A, Pop F, Rusu M, Timisoara/Bucharest (Romania)**
Fetal condylar morphology that prefigures the bifid mandibular condyle
- P49 **Philippi S, Redinger-Kraus B, Brand-Saberi B, Freiburg (Germany)**
Expression pattern and functional analysis of the flightless-i gene in myogenesis in the chicken embryo
- P50 **Morosan-Puopolo G, Dai F, Yusuf F, Rehimi R, Brand-Saberi B, Freiburg (Germany)**
The role of Wnt11 in dermis development
- P51 **Khalida N, Rehimi R, Yusuf F, Dai F, Morosan-Puopolo G, Brand-Saberi B, Freiburg (Germany)**
A novel role of CXCR4 and SDF-1 during cloacal muscle formation in the developing chick embryo
- P52 **Dai F, Morosan-Puopolo G, Balakrishnan-Renuka A, Philippi S, Zhao W, Yusuf F, Diana Runkel E, Brand-Saberi B, Freiburg (Germany)**
The role of bHLH transcription factor ATOH8 in myogenesis
- P53 **Adam N, Höckel M, Fritsch H, Innsbruck (Austria) / Leipzig (Germany)**
Development of vaginal epithelium: a histologic and immunohistochemical view
- P54 **Jianu A, Rusu M, Sisu A, Niculescu M, Motoc A, Timisoara/Bucharest (Romania)**
Evidences of the arterial microvasculature of the fetal temporomandibular joint (TMJ)
- P55 **Niculescu M, Jianu A, Sisu A, Stana L, Niculescu V, Motoc A, Folescu R, Rusu M, Timisoara/Bucharest (Romania)**
Considerations on the causative factors in the morphogenesis of the mandible's lingula and antilingula
- P56 **Wörl J, Breuer C, Neuhuber W, Erlangen (Germany)**
Deletion of Pax7 changes the tunica muscularis of the mouse esophagus from an entirely striated into a mixed phenotype
- P57 **Norkute A, Kipp M, Graf von Keyserlingk D, Valanciute A, Beyer C, Kaunas (Lithuania) / Aachen (Germany)**
Early formation of a GFAP-positive cell population during chicken brain development

- P58 **Callebaut M, Van Nueten E, Harrisson F, Hubens G, Antwerp (Belgium)**
Mechanisms of regulation or mosaicism in avian blastoderm parts

IMMUNE BIOLOGY (Poster Session I)

- P59 **Kretschmer S, Gebert A, Orzekowsky-Schroeder R, Hüttmann G, König P, Lübeck (Germany)**
An ex-vivo airway model to study cellular dynamics and tissue morphology using two-photon laser scanning microscopy
- P60 **Zidan M, Pabst R, Edfina (Egypt) / Hanover (Germany)**
The microanatomy of the palatine tonsils of the one humped camel (Camelus dromedarius)
- P61 **Oberlin D, Fellbaum C, Eppler E, Zürich (Switzerland) / Singen (Germany)**
IGF-I is distinctly located in human lymph node
- P62 **Vijayan V, Immenschuh S, Baumgart-Vogt E, Giessen (Germany)**
Cross-talk of pro-inflammatory and anti-inflammatory signal transduction pathways in lipopolysaccharide (LPS) induced RAW264.7 murine macrophages.
- P63 **Stoeckelhuber M, Messmer E, Schubert C, Stoeckelhuber B, Koehler C, Welsch U, Bals R, Munich/Lübeck/Marburg (Germany)**
Immunolocalization of defensins and cathelicidin in human glands of Moll
- P64 **Bräuer L, Möschter S, Beileke S, Paulsen F, Halle (Germany)**
Detection and localization of the surfactant proteins A, B, C and D in human salivary glands and saliva

MAIN TOPIC II (poster session II)

- P65 **Nanka O, Petrovova E, Fikrle M, Sedmera D, Prague (Czech Republic)**
Pathogenesis of catecholamine induced cardiomyopathy in quail embryo
- P66 **de Anta J, Ramírez M, Miguel M, Buxeda M, Sanchez E, Götzens V, Duran J, Ortiz J, Barcelona (Spain)**
VEGFA and KDR single nucleotide polymorphisms and coronary artery variations in hearts from human cadaver specimens
- P67 **Ohlmann A, Seitz R, Braunger B, Seitz D, Bösl M, Tamm E, Regensburg/Martinsried (Germany)**
Norrin promotes vascular regrowth after oxygen-induced retinal vessel loss and suppresses retinopathy in mice
- P68 **Buttler K, Wilting J, Göttingen (Germany)**
Human lymphangioma: comparison with animal models
- P69 **Buttler K, Wilting J, Göttingen (Germany)**
Lymphangiogenic potential of endothelial precursor cells in the mouse embryo
- P70 **Hoelbling-Patscheider D, Schotchkowsky S, Falkeis C, Klein H, Fritsch H, Innsbruck (Austria) / Bochum (Germany)**
The "forgotten" pericardial fat depot: an immunohistochemical view
- P71 **Schneider R, Welt K, Fitzl G, Leipzig (Germany)**
The influence of cardiac ischemia and reperfusion in spontaneously diabetic rats with and without application of EGB 761 on myocardial microvascular compartment
- P72 **Saburkina I, Pauza D, Rysevaite K, Vaitkevicius R, Geguzis V, Juodis E, Pauziene N, Kaunas (Lithuania)**
Relationship of the ovine epicardial ganglionated nerve plexus with sympathetic trunks and vagal nerves. A stereomicroscopic study
- P73 **Bongartz B, Banaz-Yasar F, Scheffrahn I, Schumann G, Ergün S, Essen/Langen (Germany)**
Role of LINE-1-mediated retrotransposition events and the function of LINE-1-encoded ORF-1p in angiogenesis

METHODS / TEACHING (Poster Session II)

- P74 **Ortug G, Yucel F, Eskisehir (Turkey)**
European anatomists honored with a medal from the Ottoman empire.
- P75 **Kapustin R, Korobeynikova M, Maiskii Belgorodskoi oblasti (Russia)**
Factor plans in morphological investigations of structural transformations of rabbits' skin in an experiment - **withdrawn** -
- P76 **Slesarenko N, Nosovsky A, Kapustin R, Moscow/Maiskii Belgorodskoi oblasti (Russia) - withdrawn -**
Invariant relationship as an integral criterion of evaluation of individual and typological reactions of bone's system of mammalian organisms

- P77 **Winkelmann A, Berlin (Germany)**
Progression of anatomical knowledge in traditional and reformed curricula
- P78 **Kapustin R, Kashuba A, Datsenko E, Maiskii Belgorodskoi oblasti (Russia)**
The historical and archival analysis of anatomic and histologic expositions of veterinary high schools in Russia - *withdrawn* -
- P79 **Dang J, Baertling F, Kramer M, Beyer C, Kipp M, Aachen (Germany)**
Tissue staining with TTC does not influence gene or protein expression analysis
- P80 **Herrler A, Müller-Rath R, Prescher A, Maastricht (The Netherlands) / Neuss/Aachen (Germany)**
Teaching clinical anatomy – arthroscopy from the anatomical and clinical point of view

EXPERIMENTAL MORPHOLOGY (Poster Session II)

- P81 **Pilmane M, Skagers A, Berzina-Cimdina L, Riga (Latvia)**
Time-dependent changes of surrounding tissue and implants after different biomaterial implantation in experimental animals
- P82 **Balciuniene N, Valanciute A, Graf von Keyserlingk D, Tamasauskas A, Kaunas (Lithuania)**
Main histological features of glioblastoma transplanted on chicken chorioallantoic membrane: comparison with original glioblastoma
- P83 **Rusu M, Pop F, Bucharest (Romania)**
Considerations on the sympathetic fibers at the level of the pterygopalatine fossa
- P84 **Gogulescu B, Galati (Romania)**
The three-dimensional model of gleno-humeral joint stability

NEUROANATOMY / NEUROBIOLOGY (Poster Session II)

- P85 **Nowicki M, Müller K, Hüller H, Spaniel-Borowski K, Leipzig (Germany)**
Expression of lectin-like oxidized lipoprotein receptor-1 (lox-1) and toll-like receptor-4 (tlr4) in rat dorsal root ganglion (DRG) cell cultures – a highway to hell or fight for survival?
- P86 **Horn F, Genchev B, Sinis N, Igelmund P, Schaller H, Irintchev A, Dunlop S, Angelov D, Cologne/Tübingen/Jena (Germany) / Perth (Australia)**
Electrical stimulation of paralyzed vibrissal muscles reduces endplate reinnervation and does not promote motor recovery after facial nerve repair in rats

- P87 **Merkel D, Skouras E, Grosheva M, Igelmund P, Dunlop S, Irintchev A, Angelov D, Cologne/Jena (Germany) / Perth (Australia)**
Manual stimulation, but not acute electrical stimulation prior to reconstructive surgery, improves functional recovery after facial nerve injury in rats
- P88 **Bendella H, Pavlov S, Grosheva M, Merkel D, Irintchev A, Dunlop S, Angelov D, Cologne/Jena (Germany) / Varna (Bulgaria) / Perth (Australia)**
Sequential sensory and mechanical stimulation of rat whisker pad improves recovery of whisking function after combined lesion of the trigeminal and facial nerves
- P89 **Simon R, Britsch S, Bergemann A, Ulm (Germany) / New York (USA)**
Homeobox gene *Sax2* is required for diet-induced obesity
- P90 **Gerrits P, Veening J, Groningen/Nijmegen (The Netherlands)**
Neural plasticity in the female golden hamster; estrogen sensitive descending projections from the periaqueductal gray to the caudal ventrolateral medulla
- P91 **Pauza D, Rysevaite K, Saburkina I, Pauziene N, Kaunas (Lithuania)**
Distribution of tyrosine hydroxylase and choline acetyltransferase positive nerve fibers within epicardial ganglionated nerve plexus in guinea pig and dog
- P92 **De Spiegelaere W, Casteleyn C, Van den Broeck W, Simoens P, Merelbeke (Belgium)**
On the function of epithelial cells with large cave-like depressions present on the lateral choroid plexus
- P93 **Costagliola A, Van Nassauw L, Snyders D, Adriaensen D, Timmermans JP, Naples (Italy) / Antwerp (Belgium)**
Expression of the voltage-gated delayed-rectifier potassium subunits Kv1.1 and Kv1.2 in the murine intestine
- P94 **Lepiarczyk E, Bossowska A, Wojtkiewicz J, Majewski M, Olsztyn (Poland)**
The influence of tetrodotoxin (TTX) on the adrenergic (sympathetic) and cholinergic (parasympathetic) innervation pattern of the porcine urinary bladder wall
- P95 **Johann S, Dahm M, Beyer C, Arnold S, Aachen (Germany)**
Effect of sex steroids on mitochondrial gene expression in spinal cord astrocytes and neurons
- P96 **Nandigama R, Bonitz M, Papadakis T, Möller S, Illig C, Schwantes U, Bschiepfer T, Kummer W, Giessen/Bamberg (Germany)**
Expression of muscarinic and nicotinic acetylcholine receptors in lumbosacral bladder afferent neurons in control and bladder outlet obstructed mice
- P97 **Roemgens A, Beyer C, Arnold S, Aachen (Germany)**
Gender-specific regulation of cytochrome c oxidase IV isoform and viability of astrocytes by chemical hypoxia
- P98 **Jafarpour A, Dehghani F, Korf E, Korf H, Frankfurt am Main (Germany)**
Immunohistochemical demonstration of an endocannabinoid system in the adrenal gland of the Syrian hamster

- P99 **Utuk A, Sarikcioglu L, Demirel B, Demir N, Antalya (Turkey)**
Effect of FK506 administration on focal ischemic injury in the rat sciatic nerve
- P100 **Misiak M, Singh S, Beyer C, Arnold S, Aachen (Germany)**
The role of cytochrome c oxidase subunit IV isoforms for viability of 3-nitropropionic acid-treated cortical and midbrain astrocytes
- P101 **Closhen C, Reuss, Mainz (Germany)**
Comparative morphological study of the olivocochlear pathway in albinotic and pigmented rats
- P102 **Lange E, Buchholz, Bausbacher, Best, Dieterich, Schreckenberger, Reuss, Mainz (Germany)**
Vestibular cortex in rats: a micro-pet study
- P103 **Antohe D, Antohe I, Zanoschi C, Iasi (Romania)**
The sexual dimorphism of anterior white commissure
- P104 **Antohe D, Varlam H, Bordei P, Iasi (Romania)**
The variations of Heubner's artery origin
- P105 **Bender R, Mechsner M, Nottebohm M, Glassmeier G, Rune G, Hamburg (Germany)**
Inhibition of hippocampal estradiol synthesis results in up-regulation of TrkB expression in CA1
- P106 **Braunger B, Ohlmann A, Cvekl A, Bösl M, Tamm E, Regensburg/Martinsried (Germany) / New York (USA)**
Norrin protects against light-induced photoreceptor damage
- P107 **Bender R, Hamburg (Germany)**
Developmental regulation of potassium channel alpha- and beta-subunit expression in rat perforant path
- P108 **Brichová H, Jiroutek P, Zima T, Prague (Czech Republic)**
Differentiation of mesenchymal-neuroectodermal cell interaction in fetal alcohol syndrome (FAS)
- P109 **Sarikcioglu L, Demirel B, Yildirim F, Utuk A, Demir N, Oguz N, Antalya (Turkey)**
Ligation of the two sources of vasa nervorum did not produce watershed zones in sciatic nerve: a methodological study
- P110 **Antohe D, Antohe I, Nedelcu A, Varlam H, Iasi (Romania)**
Anatomomorphometrical study of the cerebral aqueduct
- P111 **Pidsudko Z, Olsztyn (Poland)**
Distribution and chemical coding of neurons from the anterior pelvic ganglion supplying the urinary bladder trigone in the male pig
- P112 **Clarner T, Gingele S, Pott F, Beyer C, Kipp M, Aachen (Germany)**
Dexamethasone stimulates oligodendrocyte maturation and alters growth factor expression in astrocytes

- P113 **Kaleczyc J, Pidsudko Z, Pytlos A, Nakielski A, Sienkiewicz W, Lakomy M, Olsztyn (Poland)**
Distribution and chemical coding of neurons in the celiac-superior mesenteric ganglion complex supplying the pancreas in the pig
- P114 **Friederike P, Gingele S, Clarner T, Beyer C, Kipp M, Aachen (Germany)**
Cuprizone treatment induces demyelination, microglia cell proliferation, and astrocytosis in the deep grey matter of mouse cortex
- P115 **Bömmel H, Asan E, Würzburg (Germany)**
Comparison of neurite length supporting properties of wildtype and ciliary neurotrophic factor (CNTF)-deficient olfactory ensheathing cells (OEC)
- P116 **Schmitte R, Haastert K, Grothe C, Hanover (Germany)**
Intraoperative electrostimulation: a way to enhance axonal regeneration and functional recovery after reconstruction of long peripheral nerve gaps?
- P117 **Ertekin C, Uysal H, Bademkiran F, Albayrak N, Esmer A, Coskun N, Sindel M, Tekdemir I, Kizilay F, Yalin S, Karapinar N, Izmir/Antalya/Ankara (Turkey)**
Proximal motor conduction time along the lumbar plexus
- P118 **Wojtkiewicz J, Bossowska A, Lepiarczyk E, Borkowski A, Radziszewski P, Majewski M, Olsztyn/Warsaw (Poland)**
Conantokin g (CNTG)-induced changes in the chemical coding of sympathetic neurons in the inferior mesenteric ganglion (IMG) supplying the porcine urinary bladder
- P119 **Majewski M, Wojtkiewicz J, Majewska M, Bossowska A, Lepiarczyk E, Burlinski P, Borkowski A, Radziszewski P, Olsztyn/warsaw (Poland)**
Conantokin g (CNTG)-induced changes in the chemical coding of paracervical ganglion (PCG) neurons supplying the porcine urinary bladder
- P120 **Neuhuber W, Hempfling C, Wörl J, Seibold R, Shiina T, Heimler W, Erlangen (Germany) / Gifu (Japan)**
Phylogeny of enteric co-innervation of striated muscle in the esophagus
- P121 **Uyttebroek L, Dirckx M, Harrisson F, Hubens G, Shepherd I, Timmermans JP, Van Nassauw L, Antwerp (Belgium) / Atlanta (USA)**
Neuronal subpopulations of the enteric nervous system (ENS) of larval and adult zebrafish (*Danio rerio*)

NEUROIMMUNOLOGY (Poster Session II)

- P122 **Kuerten S, Rodi M, Javeri S, Kirch C, Nichlos C, Lehmann P, Addicks K, Cologne (Germany) / Cleveland (USA)**
MP4-induced experimental autoimmune encephalomyelitis is BDNF-dependent
- P123 **Kipp M, Acs P, Johann S, Norkute A, Braun A, Clarner T, Komoly S, Beyer C, Aachen (Germany) / Pecs (Hungary)**
Sex steroids prevent cuprizone-provoked demyelination of the mouse corpus callosum

REPRODUCTIVE BIOLOGY (Poster Session II)

- P124 **Wolff M, Lips K, Kölle S, Wessler I, Kummer W, Giessen/Mainz (Germany)**
The cholinergic system in the mouse oviduct.
- P125 **Navarrete Santos A, Ramin N, Thieme R, Fischer S, Fischer B, Halle (Saale)/ Freising-Weihestephan (Germany)**
Metabolic genes are dysregulated in blastocysts grown in diabetic rabbits
- P126 **Tsikolia N, Hummitzsch K, Sass K, Sygnecka K, Spanel-Borowski K, Ricken A, Leipzig (Germany)**
Characterization of KIT-positive stromal cells in bovine fetal gonads
- P127 **Schirmer S, DeGraaf Y, Gibbins I, Meinhardt A, Haberberger R, Adelaide (Australia) / Giessen (Germany)**
The expression of the cholinergic system in rat testis is predominantly of non-neuronal origin
- P128 **von Rango U, Schwede S, Alfer J, Maastricht (The Netherlands) / Aachen/Düren (Germany)**
Foxp3+ T-regulatory cells may allow uncontrolled EVT invasion in placenta accreta/increta
- P129 **Nenicu A, Okun J, Wudy S, Guillou F, Crane D, Baumgart-Vogt E, Giessen/Heidelberg (Germany) / Nouzilly (France) / Brisbane (Australia)**
Molecular pathogenesis of infertility in mice with Sertoli-cell-specific peroxisome dysfunction

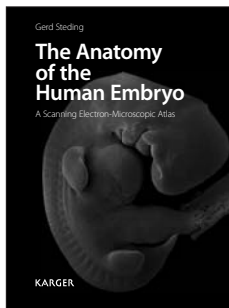
COST-B30 –Poster Session II

- P130 **Lehotsky J, Urban P, Pavlikova M, Kaminska B, Peter Kaplan, Martin (Slovakia) / Warsaw (Poland)**
Cerebral ischemic preconditioning: effect on stress response of endoplasmic reticulum
- P131 **Kiteva-Trencevska G, Demerdzieva A, Kiteva-Trencevska G, Skopje (R. Macedonia)**
Post-traumatic epilepsy and neuropsychological deterioration: a case report
- P132 **Nicaise C, Pochet R, Brussels (Belgium)**
Modified aquaporin-4 expression in the SOD1 (G93A) rat model of amyotrophic lateral sclerosis
- P133 **Radenovic L, Selakovic V, Belgrade (Serbia)**
The Mongolian gerbil model for cerebral ischemia
- P134 **Van Ginneken C, Kapuralin K, Timmermans JP, Gajovic S, Antwerp (Belgium) / Zagreb (Croatia)**
Stam2 expression in the enteric nervous system

- P135 **Mladenovic Djordjevic A, Smiljanic K, Perovic M, Tesic V, Kanazir S, Belgrade (Serbia)**
Dietary restriction modulates age related changes of cholesterol content and Cyp46 expression in the rat hippocampus
- P136 **Van Ginneken C, Brône H, Van Dam D, De Deyn P, Antwerp (Belgium)**
What happens in the enteric nervous system of Alzheimer mice?
- P137 **Glavan G, Schliebs R, Zivin M, Ljubljana (Slovenia) / Leipzig (Germany)**
Upregulation of mRNA for synaptotagmins 2, 4 and 7 in the Tg2576 mouse model of Alzheimer's disease
- P138 **Stojkov D, Herdegen T, Panayides A, Waetzig V, Stojiljkovic M, Pekovic S, Belgrade (Serbia) / Kiel (Germany)**
In vitro studies of purine nucleoside analogues effects on microglial cell culture in resting condition and upon activation – STSM report
- P139 **Bataveljic D, Zupunski L, Ulamek M, Januszewski S, Pluta R, Bacic G, Andjus P, Belgrade (Serbia) / Warsaw (Poland)**
Ischemia-reperfusion long-term survival model: a MRI follow-up study
- P140 **Caglayan B, Dedeagac A, Savasan M, Demir O, Kurnaz IA, Istanbul (Turkey)**
PEA3 phosphorylation mutants reveal critical residues for neurofilament expression
- P141 **Calvo A, Moreno-Igoa M, Manzano R, Ordovás L, Yagüe G, Oliván S, Muñoz M, Zaragoza P, Osta R, Zaragoza (Spain)**
Determination of protein and the RNA expression levels of the commonly used housekeeping genes in a neurodegeneration mouse model
- P142 **Gonçalves R, Storkebaum E, Godenschwege T, Nangle L, Jacobs A, Bosmans I, Ooms T, Yang X-L, Schimmel P, Norga K, Timmerman V, Callaerts P, Jordanova A, Leuven/Antwerp (Belgium) / Boca Raton/La Jolla (USA)**
From YARS mutations to a peripheral neuropathy, a flying perspective
- P143 **Clemente D, Ortega C, Esteban P, Murcia-Belmonte V, Arenzana J, Bribián A, de Castro F, Toledo/Barcelona (Spain)**
Role of FGF-2 in the biology of oligodendrocyte precursors: from developmental neurobiology to remyelination and the pathogenesis of multiple sclerosis
- P144 **Izquierdo M, Merchán M, Malmierca M, Salamanca (Spain)**
Changes in the tonotopic map of the inferior colliculus of the rat following an acoustic trauma

Outstanding pictures providing precious insights into prenatal human development

Embryology, Anatomy, Cell Biology, Genetics, Gynecology, Obstetrics, Pediatric Surgery, Perinatal Medicine, Fetal Medicine



Gerd Steding

The Anatomy of the Human Embryo

A Scanning Electron-Microscopic Atlas

The present anatomical atlas concentrates on the early weeks of prenatal development of the human embryo. It comprises more than 800 scanning electron-microscopic pictures of specimens of exclusively human embryos. The three-dimensional appearing illustrations show the development of the external form of the face, neck, trunk and limbs. Besides, the brain and the viscera of the head, neck, thorax, abdomen and pelvis – all dissected into layers – are represented in their position and spatial form.

The juxtaposition of pictures of temporally close developmental stages reveals the changes in the form of the organs. Photographs of the same organic system are usually shown at the same magnification. Simple outline drawings provided with the principal nomenclature facilitate the orientation within the specimens. A brief introduction to each chapter explains the most significant developmental steps depicted.

This atlas is of great interest not only to anatomists, embryologists, histologists and developmental biologists, but also to biologists, biochemists and geneticists. Moreover, it serves as a valuable reference book for clinicians such as gynecologists, obstetricians, pediatric surgeons and pediatric cardiologists.

Contents

Introduction
Acknowledgements

External Aspects

The External Form of the Embryo
The Development of the Face
The Development of the Pharyngeal Arches
The Development of the Upper Limb
The Development of the Lower Limb
The Development of the External Genitalia

Endodermal Organs in the Head and Neck

The Development of the Walls of the Oral Cavity
The Development of the Nose
The Development of the Palate
The Development of the Pharynx
The Development of the Larynx
The Position of the Thymus and the Parathyroid Gland

Organs in the Thorax

The Development of the Heart
The Development of the Lungs

Organs in the Abdomen

The Development of the Small Intestine
The Development of the Liver
The Great Vessels of the Trunk
The Development of the Stomach
The Origin of the Spleen
The Development of the Pancreas

Urogenital Organs

The Development of the Urinary Organs
The Development of the Gonads
The Reproductive Pathways

Brain and Sensory Organs

The Development of the Brain
The Development of the Eye
The Middle and the Internal Ear
The Spinal Cord

www.karger.com/anat-humanembryo

K 1 081855

Steding, G. (Göttingen)

The Anatomy of the Human Embryo

A Scanning Electron-Microscopic Atlas

XIV + 516 p., 818 fig., hard cover, 2009

CHF 246.– / EUR 175.50 / USD 246.00

Prices subject to change

EUR price for Germany, USD price for USA only

ISBN 978-3-8055-8361-9

e-ISBN 978-3-8055-8362-6

→ **Please send:** _____ copy/ies

Postage and handling free with prepayment

Payment:

Please charge to my credit card

American Express Diners Eurocard

MasterCard Visa

Card No.: _____

Exp. date: _____

CVV/CVC _____

(3 digits in the signature field on the back of Visa and MasterCard)

Check enclosed Please bill me

Orders may be placed with any bookshop, subscription agency, directly with the publisher or through a Karger distributor.

Fax: +41 61 306 12 34

S. Karger AG, P.O. Box, CH-4009 Basel (Switzerland)
E-Mail orders@karger.ch, www.karger.com

Name/Address:

Date: _____

Signature: _____

KARGER

»Ich bin Realist«

Der Rothen Atlas – Realität exakt wie
auf dem Präpariertisch – die ideale
Lernhilfe für mein Studium.

David Jost • 24 Jahre • Medizinstudent

Jetzt den Atlas mit Lernprogramm
und Sprachtrainer auf CD-ROM
kaufen und 19,95 € sparen!

Rohen, Lütjen-Drecoll

Anatomie Interaktiv

Leitungsbahnen und Muskulatur

CD-ROM: € 19,95 (D) / € 19,95 (A)

ISBN 978-3-7945-5142-2

Rohen, Yokochi, Lütjen-Drecoll

Anatomie des Menschen

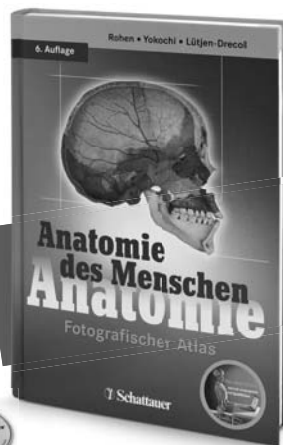
Fotografischer Atlas der systema-
tischen und topografischen Anatomie

Buch mit CD-ROM „Anatomie Interaktiv“

Unverändert zum Preis von

€ 89,- (D) / € 91,50 (A)

ISBN 978-3-7945-2430-3



Alphabetical List of First Authors of Lectures and Posters:

First Author	Number of lectures (L) and posters (P)
Adam N.	P53
Adriaensen D.	L56
Albertine K.	L57
Amit B.	L32
Antohe D.	P103
Antohe D.	P104
Antohe D.	P110
Antohe I.	L76
Arnold S.	L65
Avula L.	P45
Bakkers J.	L35
Balciuniene N.	P82
Balnyte I.	L43
Banaz-Yasar F.	L23
Barcal J.	L51
Barham M.	L91
Bataveljic D.	P139
Baumgart-Vogt	L88
Bechmann I.	L5
Becker J.	L25
Bendella H.	P88
Bender R.	P105
Bender R.	P107
Bergwerf I.	L13
Boeckxstaens G.	L4
Bömmel H.	P115
Bongartz B.	P73
Bordei P.	P24
Brandenburg L.	L69
Bräuer L.	P64
Braunger B. M.	P106
Brichová H.	P108

First Author	Number of lectures (L) and posters (P)
Brion J.	L48
Buttler K.	P68
Buttler K.	P69
Caglayan B.	P140
Callebaut M.	P58
Calvo A.C.	P141
Carmeliet P.	L1a
Carmichael S.	L27
Cengiz M.	P23
Chiriac S.	P9
Christoffels V.	L36
Clarner T.	P112
Clemente D.	P143
Closhen C.	P101
Copray S.	L89
Costagliola A.	P93
Csaki C.	L72
Dai F.	P52
Dang J.	P79
Davidson B.	L34
de Anta J.	P66
De Spiegelaere W.	L93
De Spiegelaere W.	P92
De Wilde L.	L29
Demirel B.	P11
Dierickx C.	L28
Djonov V.	L41
Donmez B.	P14
Efthymiadis A.	L24
El Sayed K.	P34
Eppler E.	L98
Erdogan A.	P2
Ergün S.	L39
Ertekin C.	P117

First Author	Number of lectures (L) and posters (P)
Fester L.	L19
Frandes C.	P10
Friederike P.	P114
Frindte J.N.	L44
Fuchshofer R.	P40
Gebert A.	L10
Gerrits P.	P90
Gajovic S.	L99
Glavan G.	P137
Gogulescu B.	P84
Gomes G.	L33
Gonçalves R.	P142
Gruart A.	L82
Haberberger R.	L61
Hammer N.	L87
Hannan A.	L47
Hausott B.	L16
Heimrich B.	L18
Hendrix S.	L8
Herrler A.	P80
Hesse B.	L79
Hoelbling-Patscheider D.	P70
Horn F.	P86
Hueller H.	L95
Iliescu M.	P26
Illig R.	L94
Izquierdo M.A.	P144
Jafarpour A.	P98
Jay T.	L52
Jianu A.M.	P54
Johann S.	L64
Johann S.	P95
Jones K.	L6
Kalczyk J.	P113

First Author	Number of lectures (L) and posters (P)
Kapustin R.	P7
Kapustin R.	P75
Kapustin R.	P78
Karnati S.	L58
Khalida N.	P51
Kipp M.	L14
Kipp M.	P123
Kiteva-Trencevska G.	P131
Koch M.	P1
Koch M.	P38
Köhler E.	P41
Kollas A.	P44
König P.	L97
Kovac T.	P29
Korczyn A.	L85
Krasteva G.	L60
Kretschmer S.	P59
Krikun E.	P8
Kuerten S.	L12
Kuerten S.	P122
Kummer W.	L55
Lange E.	P102
Lasiene K.	P47
Lee L.-Y.	L54
Lehotsky J.	P130
Lembrechts R.	P43
Lepiarczyk E.	P94
Löffler S.	L73
Lüttjen-Drecoll E.	L2
Majewski M.	P119
Männer J.	L45
Maronde E.	P39
Martin J.	L83
Martinez-Millán L.	L53

First Author	Number of lectures (L) and posters (P)
Meermans G.	P19
Mensing N.	P36
Merkel D.	P87
Michetti F.	L50
Mikulski Z.	L9
Misiak M.	P100
Mitrećić D.	L49
Mladenović Djordjević A.	P135
Morosan-Puopolo G.	P50
Motoc A.G.M.	P48
Müller S.	L68
Nandigama R.	P96
Nanka O.	P65
Narain F.	L75
Nassenstein C.	L59
Navarrete Santos A.	P125
Nenicu A.	P129
Neuhuber W.	P120
Nicaise C.	P132
Niculescu M.C.	P20
Niculescu M.C.	P55
Niederhorn J.	L1b
Nitsch R.	L3
Norkute A.	P57
Nowicki M.	P85
Oberlin D.	P61
Ohlmann A.	P67
Ortug G.	P74
Ozsoy U.	P13
Palubinskiene J.	L40
Pauza D.	P91
Pfeffer M.	L17
Philippi S.	P49
Pidsudko Z.	P111

First Author	Number of lectures (L) and posters (P)
Pilmane M.	P46
Pilmane M.	P81
Pitkanen A.	L80
Pluta R.	L84
Pouliart N.	L30
Puisoru M.	L46
Raabe O.	P37
Radenovic L.	P133
Raducan S.	P22
Reekmans K.	L66
Reich C.	P35
Roemgens A.	P97
Rusu M.C.	P3
Rusu M.C.	P83
Saburkina I.	P72
Saito T.	P18
Sapte E.	P27
Sarikcioglu L.	P109
Saritas T.	P33
Schamall D.	P6
Schirmer S.	P127
Schlegel N.	L22
Schmitte R.	P116
Schneider R.	P71
Schomerus C.	L15
Schrödl F.	L63
Schultzberg M.	L86
Schütz B.	L92
Seceleanu A.	L74
Sedmera D.	L42
Selthofer R.	P4
Sferdian M.	P21
Simon R.	P89
Sindel M.	P31

First Author	Number of lectures (L) and posters (P)
Singer B.	L96
Slesarenko N.	P76
Spindler V.	L26
Staszyk C.	P15
State D.	P28
Steinke H.	L77
Stoeckelhuber M.	P63
Stojkov D.	P138
Stoll C.	P32
Surdu L.	P25
Suzen B.	P30
Tambuyzer B.	L90
Timmerman V.	L81
Tohidnezhad M.	L70
Tohidnezhad M.	P42
Tsikolia N.	P126
Turan Z.	L67
Utuk A.	P12
Utuk A.	P99
Uyttebroek L.	P121
van den Berg G.	L38
Van Ginneken C.	P134
Van Ginneken C.	P136
Van Hoof T.	L31
Van Op den bosch J.	L11
Vanhecke D.	L21
Vijayan V.	P62
von Rango U.	P128
Wacker A.	P5
Waisbrod G.	L71
Wallner C.	L78
Weber G.	L62
Weihe E.	L7
Winkelmann A.	P77

First Author	Number of lectures (L) and posters (P)
Wojtkiewicz J.	P118
Wolff M.	P124
Wörl J.	P56
Yasuo S.	L20
Yutzey K.	L37
Zahoi D.	P16
Zahoi D.	P17
Zidan M.	P60

■ Leichenkonservierungs-Anlagen und Leichentransport-Systeme ■ Präpariertische, auch mit Flächenabsaugung ■ Küvetten für Präparate ■ Injektions- und Seziertische ■ Laboreinrichtungen ■ Mazerations-/Knochenentfettungs-Anlagen, Fabrikat FUNERALIA ■ Präpariersaal- und Arbeitsraum-Einrichtungen ■



■ BERATUNG ■ KONSTRUKTION ■
 ■ FERTIGUNG ■ KUNDENDIENST ■

Verlangen Sie bitte unsere aktuellen Kataloge und unseren Prospekt über Mazerations- und Knochenentfettungs-Anlagen!

Funeralia GmbH
 PF 10 · D-97045 Würzburg
 Tel. +49(0)931/299030
 Fax +49(0)931/2990315
 eMail: mail@funeralia.de
 Internet: www.funeralia.de

funeralia®

Discover

3B BONElike™



...going one step further

Das Material mit dem
Gewicht und Aussehen
von echten Knochen!

3B BONElike™ –
die besten Repliken
der Welt.



A281



A793



A795



A794

GENERAL INFORMATION

Organization

This joint meeting is an organization of the Anatomische Gesellschaft and the Nederlandse Anatomen Vereniging in collaboration with the University of Antwerpen.

President of the Anatomische Gesellschaft President of the 104th Annual Meeting

Prof. Dr. Jean-Pierre Timmermans
Laboratory of Cell Biology & Histology
Department of Veterinary Sciences
University of Antwerpen
Groenenborgerlaan 171, B-2020 Antwerpen
Phone: +32-(0)3-2653300 (secr) or +32-(0)3-2653327 (direct)
Fax: +32-(0)3-2653301
jean-pierre.timmermans@ua.ac.be

past President of the Nederlandse Anatomen Vereniging

Prof. Dr. W.H. Lamers
Department of Anatomy & Embryology
University of Amsterdam, AMC
Meibergdreef 69-71, 1105 BK Amsterdam, The Netherlands
Phone: +31-(0)20-5665405
Fax: +31-(0)20-5669190
w.h.lamers@amc.uva.nl

Secretary of the Anatomische Gesellschaft

Prof. Dr. med. F. Paulsen
Department of Anatomy & Cell Biology
Martin-Luther-Universität Halle-Wittenberg
Große Steinstr. 52, D-06097 Halle (Saale), Germany
Phone: +49-(0)345-5571707
Fax: +49-(0)345-5571700
friedrich.paulsen@medizin.uni-halle.de

Secretary of the Nederlandse Anatomen Vereniging

Prof. Dr. P.V.J.M. Hoogland
Department of Anatomy, VUmc
Van der Boechorststraat 7, 1081 BT Amsterdam, The Netherlands
Phone: +31-(0)20-4448038
Fax: +31-(0)20-4448054
pvjm.hoogland@vumc.nl

International Scientific Committee

Prof. Dr. E. Baumgart-Vogt, Prof. Dr. P.V.J.M. Hoogland, Prof. Dr. H.-W. Korf, Prof. Dr. W.H. Lamers, Prof. Dr. A. Moorman, Prof. Dr. med. F. Paulsen, Prof. Dr. G.M. Rune, Prof. Dr. J.-P. Timmermans

Local Scientific Committee

Chair: Prof. Dr. J.-P. Timmermans
Members: Prof. Dr. F. Van Meir, Prof. Dr. D. Adriaensen, Prof. Dr. med. J.J. Bogers, Prof. Dr. med. G. Hubens, Prof. Dr. med. F. Vanglabbeek, Prof. Dr. C. Van Ginneken, Prof. Dr. A. Weyns, Dr. L. Van Nassauw

Local Organizing Committee

All members of the Laboratory of Cell Biology and Histology (Core facility Biomedical Microscopic Imaging), University of Antwerpen

Social Programme

Prof. Dr. C. Van Ginneken

Congress Secretariat

Hubert De Pauw, Dominique De Rijck, Stef Kockelberg

Exhibition & Publicity Secretariat

Hubert De Pauw, Dominique De Rijck, Jan Van Daele

Correspondence and Meeting Secretary

Hubert De Pauw, Stef Kockelberg
Laboratory of Cell Biology & Histology
Groenenborgerlaan 171 B-2020 Antwerp, Belgium
Tel: +32/3/2653300
Fax: +32/3/2653301
secretjm2009@ua.ac.be

Correspondence and Meeting Secretary Exhibitors

Hubert De Pauw
Laboratory of Cell Biology & Histology
Groenenborgerlaan 171 B-2020 Antwerp, Belgium
Tel: +32/3/2653630
Fax: +32/3/2653301
exhibjm2009@ua.ac.be

Congress Venue and Lecture Rooms

Friday, 27 March 2009

University of Antwerpen, Building G – Middelheimcampus, Middelheimlaan 1
2020 Antwerpen, Belgium
Aula J Fabre and Hall

Saturday, 28 – Monday, 30 March 2009

University of Antwerpen, Buildings T, Y and S – Groenenborgercampus
Groenenborgerlaan 171, 2020 Antwerpen, Belgium
Hall, Lecture Rooms T103, T105, U024, U025, U026, S310 and S311

Meeting office and Registration Desk

Friday, 27 March 2009

Building G of the Middelheimcampus, Middelheimlaan 1
2020 Antwerpen, Belgium
Opening hours: 12.00 - 18.00 h

Saturday, 28 - Monday, 30 March 2009

Hall building T of the Groenenborgercampus, Groenenborgerlaan 171
2020 Antwerpen, Belgium
Opening hours: 8.00 - 19.00 h

Registration Fees

Members of the Anatomische Gesellschaft	125 EUR
Members of the Nederlandse Anatomen Vereniging	125 EUR
Non-members	165 EUR
Accompanying persons	50 EUR
Students*	40 EUR

**with a copy of their student ID and a signed letter from their department head or supervisor.*

Accommodation

Antwerp counts a large number of hotels in different price categories. The following hotels offer a limited number of rooms at special congress rates to congress participants:

- Ibis Hotel, situated in the heart of the historic town centre

- Crowne Plaza Hotel, located near the Antwerp city ring road, outside the centre.

For further information and booking instructions please click on the above links.

Hotel booking at special rates can also be made by the travel agent "Omnia" in Leuven.

Contact: Tom Vanderhaegen - email: Tom.Vanderhaegen@omnia.be; tel: +32-16-24 38 20

Student accommodation: the "Theologisch Pastoraal Centrum" (TPC – Theological Pastoral Center), situated next to the Groenenborgercampus, provides 50 modest single rooms without private toilet/bath. Prices are 27 €/person/night (breakfast and linen included); no "hotel service" is available. Reservations and advance payments need to be done when registering. Room keys are to be collected during the opening hours at the congress secretariat and thereafter with the caretaker of the TPC (up to 22.00 h at the latest).

Oral Presentations

The official congress language is English. All presentations and talks will therefore be held in English. We would ask all participants to keep to the designated time.

Audio visual equipment is installed in all lecture rooms.

Speakers are requested to hand over their presentations in advance in room U026, where presentations can also first be tested. Please do not bring along your own notebook/laptop; all lecture rooms have Windows PC with CD-drive and usb ports. The easiest and most convenient way is to store your presentation on a usb flash drive. Please carefully check your presentation before coming to the Joint Meeting to ensure that it runs smoothly and that all the necessary files, movies etc... are included. The presentation software is Windows PowerPoint.

Mac users with Keynote® presentation, however, have to bring along their own laptop.

Abstracts

All abstracts selected for presentation and presented on site will be published online on the website of the Anatomische Gesellschaft – Annual Meetings (www.anatomische-gesellschaft.de) as pdf-files

Poster Sessions

Posters will be presented in rooms S310 and S311.

Posters are to be mounted in the morning of the respective poster session and removed immediately after the end of the session.

Please use easily removable material (such as Scotch Magic adhesive tape) when mounting your posters. The use of drawing pins is forbidden. Scotch Magic adhesive tape is available from the “poster assistant”.

Maximal poster size (Width x Height) is 90 x 180 cm.

Poster Prizes

The Anatomische Gesellschaft awards four posters during the 104th Annual Meeting of the Anatomische Gesellschaft in Antwerp 2009. The poster awards are kindly sponsored by Schattauer GmbH. To get a prize first authors have to be present personally (also at the award ceremony).

Industrial exhibition

The exhibition is located in the hall of building T and in the lower part of the cafeteria.

Coffee Breaks and Lunch

The catering stand for coffee breaks and lunch is situated in the hall of building T.

During the coffee breaks, participants are offered free coffee, tea, water or orange juice in the catering stand. The catering stand offers lunch boxes (6 €) consisting of 1 filled roll (vegetarian, meat or fish), 1 drink and 1 desert (fruit, yogurt or candy bar).

Participants pay and fill their lunch box.

Internet

Participants will have access to PCs connected to the internet in room U026.
Free wireless internet access will be available in the cafeteria.

How to reach Antwerp and the University of Antwerp

By air from Brussels Airport

Antwerp Express

Every hour a direct coach service departs from the airport to the city centre of Antwerp. This coach service is operated every day. The coaches leave from the back of platform B at the bus station (level 0 – one floor down from the arrivals hall). The stop "De Keyserlei" (near the central station) is always served, the stop "Crowne Plaza" (10-15 min walk from the Groenenborgercampus) is only served on request.

On weekdays and Saturdays: first departure: 5:00 a.m.; last departure: 12 midnight

On Sundays: first departure: 7:00 a.m.; last departure: 12 midnight

Travel time: approximately 45 minutes

Tickets: available from the driver. Fare: € 10,- for adults; € 5,- for children

Brussels Airport Express

Every hour a direct coach service departs from Antwerp to Brussels Airport. This coach service runs every day.

Stop "De Keyserlei" (near central station)

On weekdays and Saturdays: first departure: 4:00 a.m.; last departure: 11:00 p.m.

On Sundays: first departure: 6:00 a.m.; last departure: 11:00 p.m.

Travel time: approximately 45 minutes

Stop "Crowne Plaza"

On weekdays and Saturdays: first departure: 4:10 a.m.; last departure: 11:10 p.m.

On Sundays: first departure: 6:10 a.m.; last departure: 11:10 p.m.

Travel time: approximately 35 minutes

Tickets: available from the driver. Fare: € 10,- for adults; € 5,- for children

By train

The 2 main train stations in Antwerp are "Antwerpen Centraal" and "Antwerpen Berchem". Participants who need to be in the centre of Antwerp, continue up to "Antwerpen Centraal". Participants for the Middelheim- and/or Groenenborgercampus get off at "Antwerpen Berchem" and then take the bus to these campuses (see public transportation).

By car

To the Middelheimcampus

Coming from Gent: E17

Follow direction Hasselt > take the exit “Wilrijk – Berchem” > at the end of the exit, turn right onto the Beukenlaan > at the third traffic lights, turn left onto the Middelheimlaan > take the second street on the right (Floralienlaan)

Coming from Hasselt – The Netherlands E313

Follow the Antwerp ringroad direction Gent > take the exit “Berchem” > turn immediately left (across the motorway) onto the “Grote Steenweg” > turn right at the first traffic lights onto the Elisabethlaan > turn again right at the next traffic lights (at the obelisk) onto the Koninklijkelaan up to the Middelheimlaan > take the second street on the left (Floralienlaan)

Coming from Brussels E19:

Take exit 6 “Hoboken, Wilrijk, Mortsel” > keep left, direction R11 “Hoboken – Wilrijk Centrum” > turn right at the third traffic lights > turn immediately right again onto the Groenenborgerlaan > turn left at the first traffic lights onto the Beukenlaan > take the first street on the right (Middelheimlaan) > take the second street on the right (Floralienlaan)

In case of insufficient parking space, participants are allowed to park their car on the parking lot of the Groenenborgercampus and the Theological Pastoral Centre and then go the Middelheimcampus by feet (a 10-min walk along a signposted walk/bike way)

To the Groenenborgercampus

Coming from Gent: E17

Follow direction “Hasselt” > take the exit “Wilrijk – Berchem” and turn right onto the Beukenlaan > turn left at the end of the Beukenlaan (= 4th traffic lights) > take the 3rd turn at the roundabout and turn left, just before the barrier, onto parking lot 1 or drive back to the roundabout, take the Groenenborgerlaan (= first turn roundabout) and turn immediately right onto parking lot 2

Coming from Hasselt – the Netherlands

Follow direction “Gent” on the Antwerp ringroad > take exit “Berchem” and turn immediately left (across the motorway) onto the Elisabethlaan < turn right at the 2nd traffic lights onto the Groenenborgerlaan > take the 1st turn at the roundabout and turn left, just before the barrier, onto parking lot 1 or drive back to the roundabout, take the Groenenborgerlaan again (= first turn roundabout) and turn immediately right onto parking lot 2

Coming from Brussels E19

Take exit 6 “Hoboken, Wilrijk, Mortsel” > keep left, direction R11 “Hoboken – Wilrijk Centrum” > turn right at the second traffic lights (signpost Middelheim) > turn right again onto the Groenenborgerlaan > after the traffic lights, take the 3rd turn at the roundabout and turn left, just before the barrier, onto parking lot 1 or drive back to the roundabout, take the Groenenborgerlaan (= first turn roundabout) and turn immediately right onto parking lot 2

In case of insufficient parking space on the university parking lots, participants are allowed to park their car on the parking lot of the Theological Pastoral Centre situated next to parking lot 2 of the Groenenborgercampus.

Public transportation

Public transportation (bus and tram) in Antwerpen is provided by "De Lijn"
Most common fares (price in advance sale/price when obtaining ticket from driver):
Individual ticket: € 1,20 /€ 1,60 - 60 minutes valid
Ticket valid for 24 hours: € 5,00/€ 6,00 - 24 hours valid
10-ride card: € 8,00 /€ 10,00 - 10 x 60 minutes valid
Tickets must be validated each time using the validation machine on the bus or tram prior to travelling.
Points for advance sale: Newspaper shops, supermarkets, ticket dispensing machines at the stops, Tourism Antwerp (only ticket valid for 24 hours or 10-ride card), ...

Contact Public Transport 'De Lijn'
Phone: +32 (0)3 218 14 11
Fax: +32 (0)3 218 15 00
E-mail: dienstregelingen.ant@delijn.be

Most common fares (in EUR)	advanced sale	ticket obtained from driver
Individual ticket	1,20	1,60
10-ride card	8,00	11,00-20,00
1-day pass	5,00	6,00
3-days pass	10,00	12,00
5-days pass	15,00	18,00

Cabs

The cab company situated nearest to both the congress site and the Crowne Plaza Antwerp and Ramada Plaza Antwerp hotels is Antwerp-tax (03-238 38 38)

Other cab companies in Antwerp:

D Taxi	03-825 75 75
DTM Taxi	03-366 66 66
Metropole Taxi	03-233 22 48
Star Taxi	03-257 57 57

SOCIAL PROGRAMME

In case one or more of the below activities are to be cancelled due to an insufficient number of participants, participants will be notified per email and the amount will be refunded. Subscriptions for events with a maximal number of participants are on a first come, first served basis.

All activities will have English-speaking guides.

Welcome reception

The Welcome Reception will take place immediately after the Opening Ceremony on **Friday, 27 March 2009** in the hall of Building G of the Middelheimcampus, Middelheimlaan 1, 2020 Antwerpen
Free of charge

Congress dinner

Sunday, 29 March 2009, 20:30 p.m.
at the Ramada Plaza Antwerp hotel, Desguinlei 94, 2018 Antwerpen
Fee: € 50,00

Guided visit to Bruges (Brugge)

Saturday, 28 March 2009, 08:30 a.m.

Visit to the historical heart of Bruges. We take a walking tour for a first exploration of the city's landmarks and monuments: the market square with its typical historic façades and the belfry, the Burg (City Hall, Basicila of the Holy Blood, Old Recorders' House), the canals of Bruges, the Fish Market, the College of Europe. Our tour will take you further along Bruges' renowned museums (Groeninge, Gruuthuse, Brangwyn), the Church of Our Lady (with the white marble Madonna with Child by Michelangelo), Old St. John's Hospital with the Memling Museum, the Beguinage and the Lake of Love. This walking tour is a must for any visitor to Bruges! The story of this tour starts in the early middle ages and will unfold Bruges in all its richness and splendour.

Lunch (excl. beverages) and tour by boat on the city canals included.

Meeting place: congress site Groenenborgercampus, 08:30 a.m.

Fee: € 65,00

'Looking at Rubens'

Sunday, 29 March 2009, 09:30 a.m.

'Looking at Rubens' takes you to the Koninklijk Museum voor Schone Kunsten, Antwerp's fine arts museum. The twenty-five paintings and oil sketches by Rubens form a surprisingly diverse and rich collection. Here you encounter Rubens as the masterly narrator of biblical and classical stories, but also as a painter of landscapes and nudes. Whether he worked in his controlled, penetrating, dynamic or exuberant style, the result is always impressive. The walk to and from the museum takes you through the historic city centre and along the edges of the river Scheldt.

People also participating in "Classic Antwerp" are free to lunch in any suitable location of their choice. Both the "Grote Markt" and its immediate surroundings have countless places to eat, offering quick snacks to elaborate meals.

Meeting place: Groenplaats – statue of Rubens, 09:30 a.m.

Fee: € 10,00

Historical centre of Antwerp

Sunday, 29 March 2008, 01:30 p.m.

The walk begins alongside the city's lifeblood: the river. From the River Scheldt, where a part of the old port culture is still to be seen, the street plan follows the old course of the water: the inlets, canals, defences and even a wild sea. The stonecutters houses along the rampart named after them (Steenhouwersvest) have since made way for bric-à-brac shops. The bankers of the Lombardenvest would perhaps be less surprised about the emergence of a hip fashion district in their old area. Modern shopping streets lead to the past. On the Wapper you enter the home and studio of the city's most famous citizen: the artist Peter Paul Rubens. That art can lead to higher spheres becomes clear during a visit to the Cathedral of Our Lady. On the outside the old lady is clad in magnificent stone lacework; inside she is a shrine to impressive works of art, including no fewer than four paintings by Rubens. The tour ends at the Grote Markt, the heart of the historic city.

Meeting place: in front of the City Hall at the Grote Markt (city square), 01.30 p.m.

Fee: € 15,00.

Visit of the diamond museum and diamond cutting factory

Monday, 30 March 2009, 09:45 a.m.

The Diamond Museum is the place to be to learn everything about diamonds. Diamond is a magical word. It evokes images of power and wealth, of invincibility and strength, but also of beauty and love. The museum is an 'image and sound' museum, a total and unique experience for the senses you actually find yourself immersed in the fascinating world of this magnificent little stone, from its origin and formation to the production of polished and fancy cut diamonds. The visit to the Diamond Museum is preceded or followed by a visit to the traditional diamond cutting and polishing firm of Krochmal & Lieber.

People also visiting the Zoo of Antwerp are free to lunch in any suitable location of their choice. Both the "Antwerp Central Railway Station" and its immediate surroundings have countless places to eat, offering quick snacks to elaborate meals.

Meeting place: Hall of Antwerp Central Railway Station, 09:45 a.m.

Fee: € 14

Antwerp Zoo

Monday, 30 March 2009, 01:30 p.m.

The Zoo of Antwerp, founded in 1843 and hence one of the oldest zoos in the world, is the green heart of the city, populated by more than 5,000 animals. After more than 160 years this romantic English garden with its marvellous collection of animals is still a unique meeting spot for young and old, attracting about 1 million visitors each year. In case of bad weather, many indoor collections can be visited: the reptile house, the ape house, nocturama (nocturnal animals), the aquarium and "Vriesland" ('freeze land'): a biotope with sea otters, King penguins and macaroni penguins,...

The visit ends at about 17.30 h, closing time of the zoo.

Meeting place: Hall of Antwerp Central Railway Station, 01.30 p.m.

Fee: € 19,00

Geschäftssitzung der Anatomische Gesellschaft

- Mitgliederversammlung -
Saturday, March 28, 2009 06:30 p.m. Lecture Hall T103

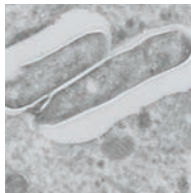
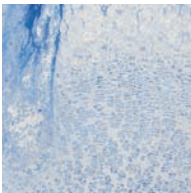
DIATOME

Swiss Diamond Knives

**Best cutting results at room
and low temperature**



Diatome AG
P.O. Box
2501 Biel / Switzerland
Phone +41 (0)32 332 91 13
Fax +41 (0)32 331 52 57
diatome@diatome.ch
www.diatome.ch



Industrial Exhibitors

Dako Belgium NV, Interleuvenlaan 128, 3001 Leuven, Belgium

Jeol (Europe) BV, Planet II, Leuvensesteenweg 542, BE-1930 Zaventem and Lireweg 4, NL-2153 PH Nieuw-Vennep, The Netherlands

John Wiley & Sons, Inc, 111 River Street, 8-01 Hoboken, NJ 07030-5774, USA

Leica Microsystems, 't Hofveld 6E, 1702 Groot-Bijgaarden (Belgium)

PerkinElmer, Imperiastraat 8, B1, 1930 Zaventem, Belgium

Marcus Sommer SOMSO Modelle GmbH, Friedrich-Rueckert-Straße 54, D-96450 Coburg, Germany

Olympus Belgium NV, Boomsesteenweg 77, 2630 Aartselaar, Belgium

Sponsors

University of Antwerpen, Belgium

COST Action B30 (European Cooperation in the field of Scientific and Technical Research)

The Anatomical Record/Wiley, 111 River Street, 8-01 Hoboken, NJ 07030-5774, USA

Heart Repair

Alfried Krupp von Bohlen und Halbach-Stiftung

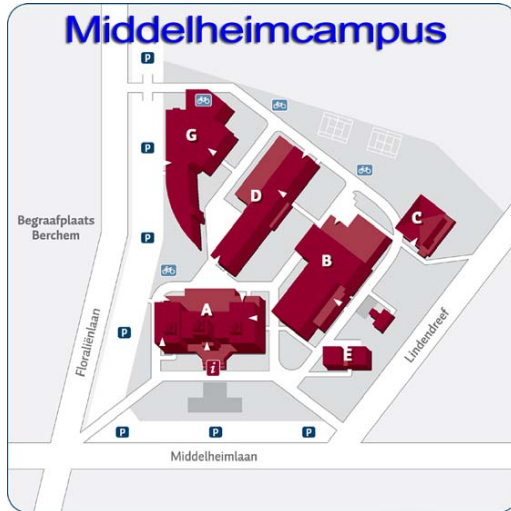
Deutsche Akademie der Naturforscher Leopoldina, Postfach 11 05 43, D-06019 Halle (Saale), Germany

Jeol (Europe) BV, Planet II, Leuvensesteenweg 542, BE-1930 Zaventem, Belgium and Lireweg 4, NL-2153 PH Nieuw-Vennep, The Netherlands

Carl Zeiss NV, Ikaroslaan 49, 1930 Zaventem (Belgium)

3B Scientific GmbH, Rudorffweg 8, 21031 Hamburg, Germany

Middelheimcampus and Groenenborgercampus



How to reach the University of Antwerpen by car



Schriftführer/Secretary
Univ.-Prof. Dr. med. Friedrich Paulsen
Institut für Anatomie und Zellbiologie
Martin-Luther-Universität Halle-Wittenberg
Große Steinstr. 52
D-06097 Halle (Saale)
Tel.: +49 (0)345 557 1703; Fax: +49 (0)345 557 1700

Vorsitzende/Board

Eveline Baumgart-Vogt, Giessen
Horst-Werner Korf, Frankfurt
Gabriele Rune, Hamburg
Jean-Pierre Timmermans, Antwerpen/Antwerp

Schriftführer/Secretary

Friedrich Paulsen, Halle

**Board of
Anatomische Gesellschaft**

Secretary Prof. Dr. med. Friedrich Paulsen
Institute of Anatomy and Cell Biology
Martin-Luther-University Halle-Wittenberg
Große Steinstr. 52
06097 Halle (Saale)

Membership application – annual subscription rate: € 40.-

I would like to apply for a membership in the Anatomische Gesellschaft.

_____ name

_____ first name

_____ title

_____ university

_____ department

_____ street and street number

_____ postcode and town

_____ country

_____ phone and fax

_____ e - mail

_____ signature



Nutzen Sie die Erfahrung aus 60 Jahren.....

Einrichtungen Anatomie / Pathologie

- Leichenkonservierungsanlagen
- Seziertische für Anatomie / Pathologie
- Zuschneidetische

Medizinische Kühlgeräte

- Laborkühlschränke - Labortiefkühlschränke/Truhen (-30° C bzw.-40°C)
- Tiefemperaturschränke/Truhen (-20° bis -85°C)
- Leichenkühlzellen
- Blutbankkühlschränke, Blutbank-Depotanlagen, Plasma-Schockfroster
- Bis -70°C für 5, 10, 20 Plasmakartons mit 250 - 1000 ml Inhalt

Herstellung von Sondergeräten

73473 Ellwangen Postfach 1364 Telefon: 07961/56 77-0 Fax: 5677-22
eMail: info@Thalheimer-Kuehlung.de
web: www.Thalheimer-kuehlung.de

„SprayCon® CS“

Closed Whole Body Fixation / Conservation System



The answer to all questions in whole body fixation / conservation, especially Thiel-fixation – by MEDIS / Germany

- ▶ Fully closed system – total health protection
- ▶ Modular design – inexpensive and universal installation
- ▶ Variable fixation / conservation methods now possible
- ▶ No expensive fume extraction systems necessary

MEDIS offers highly specialized servicing on consultancy and turn-key realisation of equipping institutes of Anatomy, Forensic Medicine, pathology and Toxicology on a worldwide basis.

M
MEDIS
GERMANY
Anatomy
Legal Medicine
Pathology

Meeting Calender – Scientific Program – Social Programme

Day	Hours	T103	T105	U024	S310 & S311	Aula J Fabre Leopoldina Symposium	Social Programme
Friday 27/03/09	13:00 – 17:10 18:00 – 20:00						Opening Ceremony and Welcome Reception
Saturday 28/03/09	08:30 – 10:45 11:15 – 12:45 12:45 – 14:00 14:00 – 15:15 15:45 – 16:45 17:00 – 18:30 18:30 – 19:30	MT I, Session I MT I, Session II Lunch MT I, Session III/ Neuroanatomy I Neuroanatomy II Business Meeting	Cell Biology I Lunch FLESSS I FLESSS II		Poster Session I		08:30 Bruges
Sunday 29/03/09	08:30 – 10:00 10:30 – 12:00 12:00 – 13:15 13:15 – 14:45 15:15 – 17:00 17:00 – 18:30 20:30	MT II, Session I MT II, Session II Lunch MT II, Session III MT II, Session IV	COST B30 I COST B30 II Lunch COST B30 III COST B30 WS/MC	Anat Rec I Lunch Anat Rec II Anat Rec III			09:30 Rubens 13:30 Centre Antwerpen Congress Dinner
Monday 30/03/09	08:30 – 10:00 10:30 – 12:15 12:15 – 13:30 13:30 – 15:30 15:30	Neuroanatomy III Cell Biology II Lunch Gross Anatomy Closing Ceremony & Poster Prizes	COST B30 IV COST B30 V Lunch COST B30 VI	Dev/Repr/Imm Biology			9:45 Diamond Museum & Factory 13:30 Antwerp Zoo