

# The Changing Management of Esophageal Carcinoma: Survival in a Population Cohort 1985-1994

T. Bates<sup>1,\*</sup>, A. Antoniou<sup>2</sup>, R.E.K. Marshall<sup>3</sup>, M. Harrison<sup>1</sup> and E.E. Bassett<sup>4</sup>

<sup>1</sup>Department of Surgery, William Harvey Hospital, Ashford, Kent, UK

<sup>2</sup>Institute of Liver Studies, Kings College Hospital, London, UK

<sup>3</sup>Department of Surgery, The Horton and The John Radcliff Hospital, Oxford, UK

<sup>4</sup>Institute of Mathematics and Statistics, University of Kent, Canterbury, (Canterbury), UK

**Abstract:** *Background:* The management of esophageal carcinoma is changing but before the introduction of chemotherapy and multidisciplinary teams, surgery became more selective. The aim of this study was to confirm this trend and to examine survival in a total population cohort 1985-94.

*Results:* Only a quarter of 413 patients had surgery but from 1989 even fewer were operated on but there were more long-term survivors: 1/51 v. 7/58 ( $p < 0.05$ ). Operative mortality fell from 12% to 6.9% in the later period (N.S.) and survival post surgery was marginally improved, 15 v. 11 months  $p = 0.0502$ . The five year survival rate doubled from 7.8% to 17.2%.

*Conclusion:* Few studies of esophageal cancer include all cases in a defined population. This carries a very poor prognosis but the present cohort shows a slight improvement with more selective surgery and this may serve as a benchmark against which modern multidisciplinary management might be compared.

**Keywords:** Esophageal cancer, Esophagectomy, Radiotherapy, Mortality, Prognosis.

## INTRODUCTION

In contrast to the incidence of gastric cancer, which has fallen worldwide, the incidence of esophageal cancer has been increasing at an appreciable rate. There has been an increase in the incidence of adenocarcinoma of the distal esophagus, together with a shift of gastric carcinoma from the distal part of the stomach to the cardia and esophago-gastric junction [1-4]. Surgical resection is still the treatment for esophageal carcinoma which gives the best chance of achieving a cure, but this can only be achieved by accurate staging of the disease and may be improved by neo-adjuvant or adjuvant chemo-radiotherapy [2, 3]. The majority of patients diagnosed with upper gastrointestinal cancer only survive a few months after diagnosis because of the insidious nature of the condition but this poor prognosis is not fully reflected in published series of cases referred for surgery. The relatively low incidence of the disease in the UK may also delay presentation and result in the disease being too advanced at presentation for surgical intervention. There was an apparent change in the management of esophageal carcinoma with a more selective approach to surgical resection and an increase in palliation by intubation and radiotherapy in the era before the introduction of modern multidisciplinary management

[5] with intensive staging investigations and the increasing use of chemotherapy. However the evidence for such a trend has been anecdotal and any change in practice and outcome has not been well documented. A ten year cohort study spanning the period of the perceived change of management, 1985-1994, was therefore carried out. The inclusion of all cases of esophageal cancer in a defined population documents the overall survival from the disease in the era preceding current multidisciplinary management.

## MATERIALS AND METHODS

Over a ten year period between 1985-1994, all cases of esophageal carcinoma were studied in a Health District with a stable population of approximately 280,000. All death certificates over the period were examined and a computer search of the histopathological data-base was carried out for all cancers of the esophagus and stomach. A hand search was made of the operating theatre logbooks and a hand/computer search of the endoscopy records was also performed. Where possible the hospital records were retrieved and those cases of documented carcinoma of the cardia were included. Details of the histological type and node status were recorded. Cases with carcinoma of the body and distal stomach were excluded.

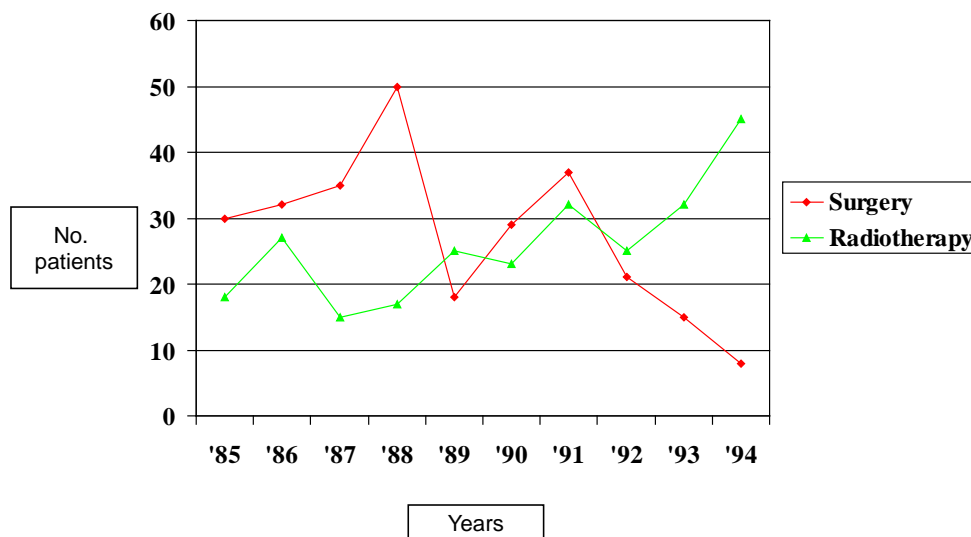
Details of the type of stent inserted and whether the latter was used in conjunction with chemo- or radiotherapy were recorded. The type of surgical resection and the operating surgeon were recorded. Data on the trends in the catchment

\*Address correspondence to this author at the Department of Surgery, William Harvey Hospital, Ashford, TN24 0LZ, Kent; Tel: 01233 750304; Fax: 01233 750599; E-mail: bates.tom@virgin.net

**Table 1. Treatments Received by all Patients by Year 1985-1994: Treatment given to Total Cohort**

	1985	1986	1987	1988	1989	1990	1991	1992	1993	1994	Total
Chemotherapy	2	1	0	1	0	1	2	2	3	1	13 <sup>1</sup>
Radiotherapy	6	8	6	6	13	11	12	13	14	17	106 <sup>2</sup>
Stenting/dilatation	19	22	33	19	26	21	20	22	20	32	234 <sup>3</sup>
Supportive care only	8	5	7	7	17	14	9	15	13	10	105 <sup>4</sup>
Surgery	10	10	14	18	9	14	14	11	6	3	109
TOTAL	33	31	40	36	51	48	38	52	45	39	413

**Notes:** <sup>1</sup>Chemotherapy was usually given in combination but in 4 cases this was the sole treatment; <sup>2</sup>Radiotherapy was the primary palliative treatment in 92 cases: in 14 it was given in combination with surgery; <sup>3</sup>Stents were used in 83 cases. Dilatation ± intubation was the sole 1<sup>o</sup> treatment in 103 cases; <sup>4</sup>The supportive care group include 12 patients where diagnosis was confirmed at postmortem and 37 patients where the diagnosis was established but no specific 1<sup>o</sup> therapy was given.



**Fig. (1).** Treatment of patients with esophageal cancer by surgery and radiotherapy over the decade 1985-1994.

population over the period of the study were obtained from the Office for National Statistics [6]. The treatment year and the length of survival were taken from the date of diagnosis. Operative mortality at 30 days was taken from the date of operation. All patients were followed up and at the most recent review of the survivors in October 2005, the minimum length of follow-up was 11 years. Overall and recurrence-free survival following primary treatment with surgery, radiotherapy alone, dilatation/intubation alone or supportive care were compared by Life Table analysis (Kaplan-Meier) and statistical analysis by the log rank test (Medcalc Schoonjans 2005).

**RESULTS**

A total of 413 patients diagnosed with esophageal carcinoma was identified between 1985 and 1994 of whom 109 had a surgical resection. From 1992 onwards there was a sharp decline in the proportion of patients treated by surgery, (Fig. 1) although the number of cases increased (Table 1). In the last 2 years of the study only 9 of 84 (11%) patients with esophageal cancer had a surgical resection.

There was a corresponding rise in the proportion of patients treated conservatively from 63% up to the end of

1988, to 79% in the subsequent years. The proportion of patients who received radiotherapy with palliative intent (n=92), or in addition to surgery (n=14) also rose over the 10 year period (Fig. 1).

**ESOPHAGEAL DILATATION/INTUBATION**

Dilatation of esophageal cancers with or without intubation was carried out in 234 patients (Table 1) and in 103 cases this was the sole primary treatment. Palliation with a stent was attempted in 93 patients of which 73% were of Celestin type, 22% Nottingham/Atkinson and 5% were not recorded. No patient in this cohort received intubation with an expandable metal stent.

**CHEMOTHERAPY**

Chemotherapy was only given to 13 patients which was adjuvant to other treatment in 9 patients but in 4 was the sole primary treatment.

**SUPPORTIVE CARE**

No active primary treatment was given to 105 patients (25%) who received supportive care. This group included 12 patients where the diagnosis was only confirmed at post

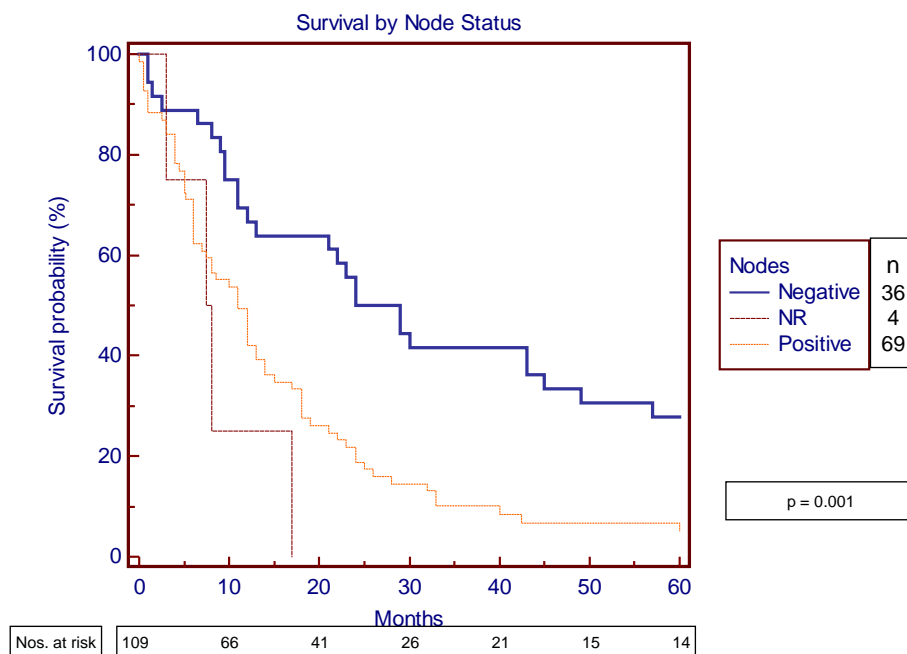


Fig. (2). Survival of operated patients by node status.

mortem and 37 patients where the diagnosis was confirmed but no definitive treatment was given.

**SURGICAL RESECTION**

Of the 109 patients treated by surgical resection, under the care of four surgeons, 59% underwent transhiatal esophagectomy, 16% an Ivor-Lewis operation, 12% a left thoracic approach, 7% a transabdominal operation for carcinoma of the cardia and in 4% a 3 stage procedure was carried out. In 3 cases the operation record was not available. Adjuvant radiotherapy was given in 14 surgical cases and chemotherapy in 5.

**PATHOLOGY**

Histological confirmation was confirmed in 93% of cases. In the first two years 1985-1986 the incidence of adenocarcinoma (47%) was similar to squamous cell carcinoma but thereafter adenocarcinoma became predominant (70%).

**PREOPERATIVE STAGING**

CT scans were not available until the last three years of the study but pre-operative staging by laparoscopy was used to an increasing extent in the later years.

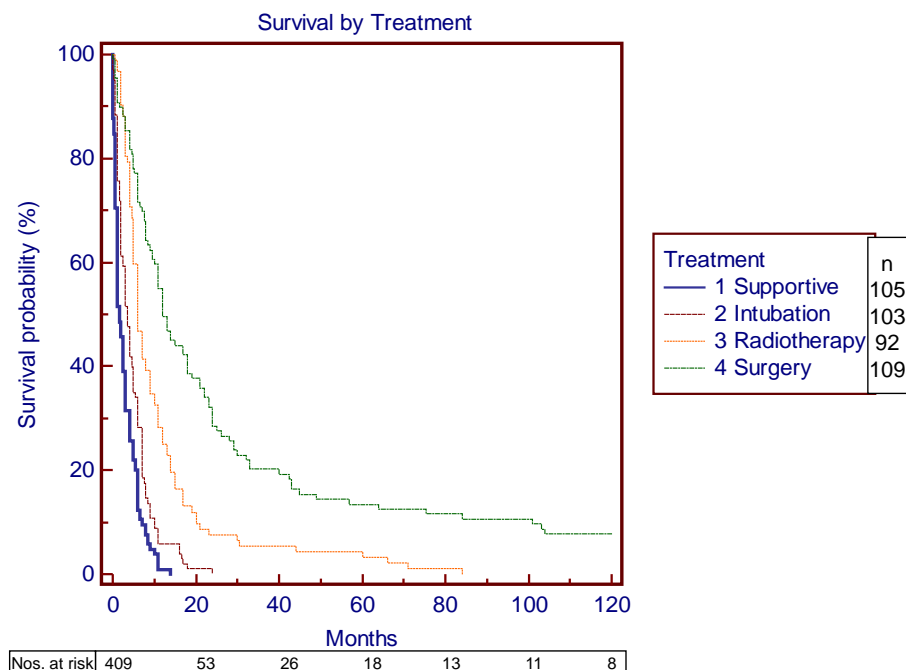


Fig. (3). Survival by primary treatment. (This figure does not include 4 patients treated by chemotherapy alone).

**POPULATION ESTIMATE**

The office for National Statistics estimated the rise in the catchment population for S.E. Kent over the study period in the age range 70-74 to have been 7% in males and 4.8 % in females [6]. It is unlikely that many patients were referred outside the district for the treatment of esophageal cancer over the period of the study. Only one patient is known to have been referred for resectional surgery in London.

**SURVIVAL**

**Node Status**

Of 109 patients who had a surgical resection the nodes were positive in 69 (63%), negative in 36 and not recorded in four. The median survival in the node negative patients was 24 months compared with 11 months for the node positive patients ( $p < 0.001$ ) (Fig. 2).

The median survival of 109 surgical patients was 12 months, compared with 6 months for the 92 patients treated by palliative radiotherapy. The median survival for the group treated primarily with dilatation/intubation was 3.5 months and for those who received supportive care 1.5 months (Fig. 3).

The median survival of the operated patients who had adjuvant radiotherapy ( $n=14$ ) was 29 months compared with 12 months for those who did not ( $n=95$ ) but the difference was not significant. ( $p= 0.22$ ) The median survival of the 13 patients who had chemotherapy was 13 months. Only 15 squamous carcinomas were resected with a median survival of 12 months.

There were more long-term survivors in the later period 1989-94 (7/58) vs 1/51 in the earlier 4 years ( $p < 0.05$ . Fisher's exact test), when the proportion of surgical treatment for esophageal cancer was in decline. There was

no difference in the overall median survival with the apparent change in the management 1985/88 v. 1989/94. Hazard ratio 0.95 (95% CI = 0.76 to 1.155) (Fig. 4).

However, there was a marginal improvement in survival seen in the surgical patients operated on in the later period. The five-year survival rate doubled from 8% to 17.2% and the median survival of 15 months compared with 11 months in the early group 1985/88  $p= 0.0502$  Hazard ratio 1.46 (95%CI 0.9997 to 2.26) (Fig. 5).

There were 10 post-operative deaths within 30 days (9.3%) but the operative mortality in the early period 1985/88 fell from 6/51 (12%) to 4/58 (6.9%) in the later period. (N.S.) The five year survival rate of the operated patients including post-operative mortality was 12% (13/109).

There were only 8 long-term survivors at 10 years post surgery (7.3%), none of whom had received adjuvant chemotherapy or radiotherapy. One patient was lost to follow-up at 33 months post surgical resection, when clinically free of recurrence. Of the long-term survivors three had a squamous carcinoma and five an adenocarcinoma. Five patients treated by surgery between 1989 and 1994 were still alive in October 2005 but all non-surgical patients had died.

**DISCUSSION**

The very few long-term survivors in this total population cohort of patients from the decade 1985-1994 had all been treated by surgery alone. The increasing place of chemotherapy in the treatment of esophageal cancer had not yet been established but his study does document a change in practice towards a more selective management of esophageal cancer with a decline in the rate of surgical resection. The outlook for those patients offered surgery improved and it is likely that the reduction of operative mortality from 12% to 6.9% is largely due to improved intensive care facilities. However, the separation of the survival curves at about 1 year

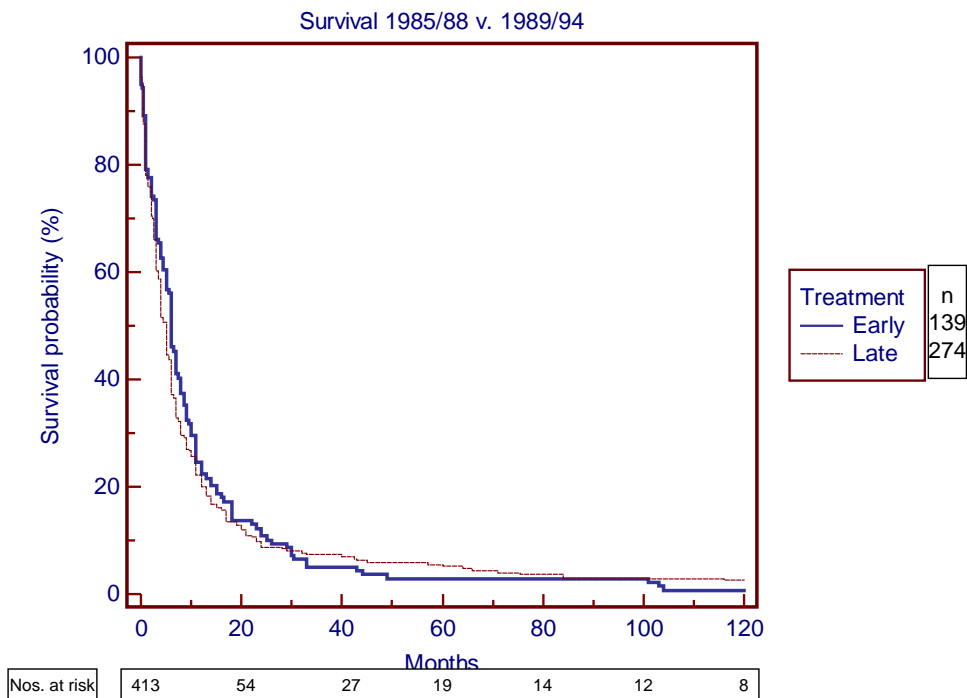
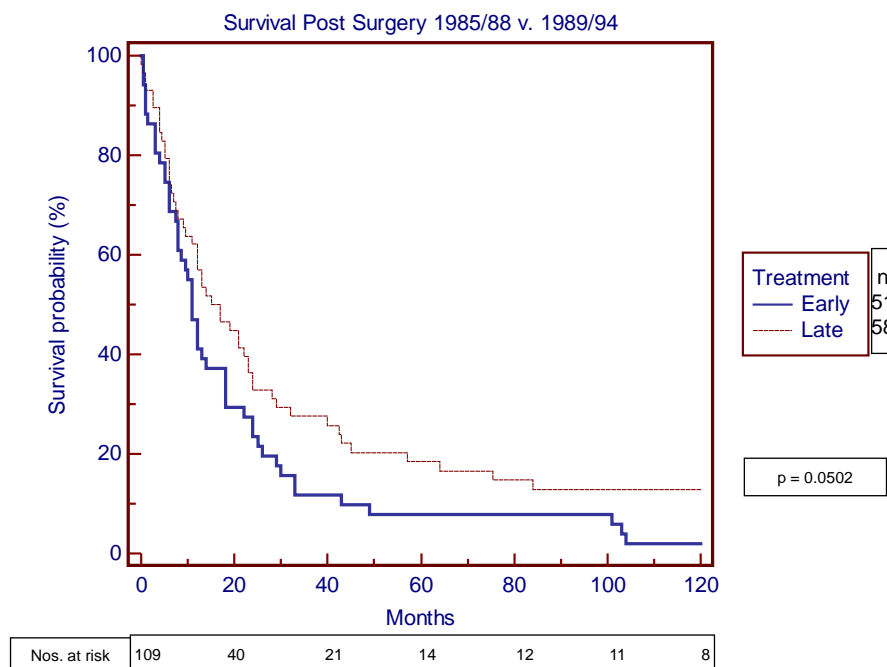


Fig. (4). Survival of total cohort 1985/88 vs. 1989/94.



**Fig. (5).** Survival post surgery 1985/88 vs. 1989/94.

in Fig. (5), in the absence of adjuvant therapy in the long-term survivors suggests that case selection may have improved. CT scans were only available from 1992 and pre-operative staging by laparoscopy was used to an increasing extent in the latter part of the study. It is likely that these two factors largely account for the reduced number of patients offered surgery towards the end of the period (Fig. 1). Every effort was made to identify all cases of esophageal cancer in the defined population cohort and although it is possible that more patients were referred to specialist centers this was not common practice over this period and any such case is likely to have been identified by the pre-operative biopsy or the death certificate. The few cases diagnosed at post mortem, where this was the certified cause of death, are unlikely to have died from another cause.

### Esophageal Carcinoma in 1985 was the Ninth Most Common Malignancy

Worldwide [5] and the incidence in England and Wales continues to rise. A number of factors have been attributed to this increase in incidence, which include alcohol, smoking, obesity, an increase in Barrett's oesophagus secondary to reflux disease and the introduction of H2 blockers [1,2,7,8]. A number of potentially curative and palliative treatments exist and although surgical resection has remained the main chance of cure for this condition, treatment has latterly been reinforced by adjuvant chemoradiotherapy [9-12] and most recently with evidence of survival benefit from perioperative chemotherapy [13]. There is now evidence that a high surgical workload improves operative mortality but this is as much a factor of the hospital volume as of the surgeon [14-16] and in the UK this has led to regionalization of high risk gastrointestinal surgery.

A transthoracic three-field lymphadenectomy carries considerable morbidity and since node positive disease has such a poor prognosis, considerable efforts are now made to exclude local extension and node involvement with endoluminal ultrasound [17, 18] and more distant disease with a CT-PET scan [19]. The transhiatal operation has much the same long-term outcome and since this approach carries less morbidity than the transthoracic operation this may have some advantage [20].

Palliative procedures carry their own morbidity and mortality so that quality of life assessment is most important. Blazeby *et al.* have shown that patients treated with palliation alone have consistently poorer function and more troublesome symptoms [21] but quality of life scores may not predict short-term outcome [22]. Esophagectomy does not always give good palliation especially when the mean survival was only 12 months but quality of life data were not available for the current cohort of patients.

The present study confirms that there was a definite change in management of esophageal cancer with fewer surgical resections and an increase in palliative treatment over the ten year period 1985-94. Palliation mainly took the form of intubation with the previous generation of rigid plastic tubes [23] or radiotherapy and very few patients received chemotherapy. There was no change in consultant medical or surgical staff over the study period but although they did not function as a multidisciplinary team at this time, a gradual change in practice has been confirmed.

Over the ten year period of study both the male and female population increased by 7.3% and 4.8% respectively for 70-74 year age group which would indicate that there were more people at risk of developing esophageal carcinoma in the latter part of the study. One would therefore have expected to see an increase in the number of patients having surgery but this was not the case.

The reported operative mortality and 5 year survival of esophagectomy vary widely but the nearest series to the present study is a Finnish cancer registry based population cohort of 402 patients with adenocarcinoma diagnosed between 1990 and 1998 [24]. The operation rate of 42.5% was higher than the rate of 27% in the present series and although the operative mortality was similar at 8.8% the 5 year survival was higher at 29% v. 12%. The operative mortality of transhiatal esophagectomy within the present study was 5.9% [25].

Thirty day operative mortality as low as 1.1 % has been reported from France [26] with a 5 year survival of 59%. However, this was a series with 78% squamous carcinoma and only 29% node positive cases. The present study more closely matches the data from Southampton [27] and Australia [28]. In the former study, for 1974-1996 the in-hospital mortality fell from 8.8% to less than 5% but the 5 year survival remained disappointingly low at 15.3% compared with 17% in the latter part of the present study.

The trend towards more careful selection of patients for surgery has not been the result of randomised controlled trials or prospective studies but reflects a change of practice in the light of a poor outcome for many patients [29, 30]. The short median survival of 11 months for node positive patients who had a surgical resection underlines the need to identify this group as far as possible by imaging techniques before surgery is considered. It is clear that the multidisciplinary team approach has further improved the staging accuracy and care of esophageal cancer [31, 32] and there is some evidence from historical controls that it has improved outcome [33, 34]. Modern therapy has substantially improved the outcome for operable esophageal cancer but the present study may serve as a benchmark when all cases presenting in a defined population are considered.

## REFERENCES

- [1] Cheng KK, Day NE. Oesophageal cancer in Britain. *BMJ* 1992; 304: 711.
- [2] Allum WH, Griffin SM, Watson A, Colin-Jones D, Association of Upper Gastrointestinal Surgeons of Great Britain and Ireland; British Society of Gastroenterology; British Association of Surgical Oncology. Guidelines for the management of oesophageal and gastric cancer. *Gut* 2002; 50 (Suppl v): v1-v23.
- [3] Coggon D, Inskip H. Is there an epidemic of cancer? *BMJ* 1994; 308: 705-8.
- [4] Devesa SS, Blot WJ, Fraumeni JF Jr. Changing patterns in the incidence of oesophageal and gastric carcinoma in the United States. *Cancer* 1998; 83: 2049-53.
- [5] Clark GW, Roy MK, Corcoran BA, Carey PD. Carcinoma of the oesophagus: the time for a multidisciplinary approach? *Surg Oncol* 1996; 5: 149-164.
- [6] Office for National Statistics. Population data for 70-74 years age range during 1985-1995, 2001.
- [7] Suleiman UL, Harrison M, Britton A, McPherson K, Bates T. H2-receptor antagonists may increase the risk of cardio-oesophageal adenocarcinoma: case-control study. *Eur J Cancer Prev* 2000; 9: 185-91.
- [8] Kubo A, Corley DA. Body Mass Index and adenocarcinomas of the esophagus or gastric cardia: a systematic review and meta-analysis. *Cancer Epidemiol Biomarkers Prev* 2006; 15: 872-878.
- [9] Wilson KS, Lim JT. Primary chemo-radiotherapy and selective esophagectomy for oesophageal cancer: goal of cure with organ preservation. *Radiother Oncol* 2000; 54: 129-34.
- [10] Macdonald JS, Smalley SR, Benedetti J, *et al.* Chemoradio-therapy after surgery compared with surgery alone for adenocarcinoma of the stomach or gastroesophageal junction. *N Engl J Med* 2001; 345: 725-30.
- [11] Greer SE, Goodney PP, Sutton JE, Birkmeyer JD. Neoadjuvant chemoradiotherapy for esophageal carcinoma: A meta-analysis. *Surgery* 2005; 137: 172-7.
- [12] Geh JJ, Bond SJ, Bentzen SM, Glynne-Jones R. Systematic overview of preoperative (neoadjuvant) chemoradiotherapy trials in oesophageal cancer: evidence of a radiation and chemotherapy dose response. *Radiother Oncol* 2006; 78: 236-44.
- [13] Cunningham D, Allum WH, Stenning SP, *et al.* Perioperative chemotherapy versus surgery alone for resectable gastroesophageal cancer. *N Engl J Med* 2006; 355: 11-20.
- [14] Gillison EW, Powell J, McConkey CC, Spychal RT. Surgical workload and outcome after resection for carcinoma of the oesophagus and cardia. *Br J Surg* 2002; 89: 344-48.
- [15] Metzger R, Bollschweiler E, Vallbohmer D, Maish M, De Meester TR, Holscher AH. High volume centers for esophagectomy: what is the number needed to achieve low post-operative mortality? *Dis Esophagus* 2004; 17: 310-314.
- [16] Bentrem DJ, Brennan MF. Outcomes in oncologic Surgery: does volume make a difference? *World J Surg* 2005; 29: 1210-16.
- [17] Das K, Chak A, Sivack MV, Payes J, Cooper GS. Endoscopic ultrasound and prognosis of esophageal cancer. *Clin Gastroenterol Hepatol* 2006; 4: 695-700.
- [18] Schrager JJ, Tarpley JL, Smalley WE, Austin MT, Pearson AS. Endoscopic ultrasound: impact on survival in patients with esophageal cancer. *Am J Surg* 2005; 190: 682-686.
- [19] Munden RF, Macapinlac HA, Erasmus JJ. Esophageal cancer: the role of integrated CT-PET in initial staging and response assessment after preoperative therapy. *J Thorac Imaging* 2006; 21: 137-145.
- [20] Sasako M, Sano T, Yamamoto S, *et al.* Left thoracoabdominal approach versus abdominal-transhiatal approach for gastric cancer of the cardia or subcardia: a randomised controlled trial. *Lancet Oncol* 2006; 7: 613-615.
- [21] Blazeby JM, Williams MH, Brookes ST, Alderson D, Farndon JR. Quality of life measurement in patients with oesophageal carcinoma. *Gut* 1995; 37: 505-8.
- [22] Blazeby JM, Metcalfe L, Nicklin J, Barham CP, Donovan J, Alderson D. Association between quality of life scores and short-term outcome after surgery for cancer of the oesophagus or gastric cardia. *Br J Surg* 2005; 92: 1502-1507.
- [23] O'Donnell CA, Fullarton GM, Watt E, Lennon K, Murray GD, Moss JG. Randomized clinical trial comparing self-expanding metallic stents with plastic endoprostheses in the palliation of oesophageal cancer. *Br J Surg* 2002; 89: 985-92.
- [24] Sihvo EI, Luostarinen ME, Salo JA. Fate of patients with adenocarcinoma of the oesophagus and the esophagogastric junction: a population-based analysis. *Am J Gastroenterol* 2004; 99: 419-424.
- [25] Johnson PR, Kanegoanker GS, Bates T. Indirect laryngoscopic evaluation of vocal cord function in patients undergoing transhiatal oesophagectomy. *J Am Coll Surg* 1994; 178: 605-8.
- [26] Mariette C, Piessen G, Balon GN, Van Senninger I, Tribonet JP. Surgery alone in the curative treatment of localized oesophageal carcinoma. *Eur J Surg Oncol* 2004; 30: 869-876.
- [27] Dalrymple-Hay MJ, Evans KB, Lea RE. Oesophagectomy for carcinoma of the oesophagus and oesophagogastric junction. *Eur J Cardio-Thoracic Surg* 1999; 15: 626-30.
- [28] Zhang X, Watson DI, Jamieson GG, Lally C, Bessell JR, Devitt PG. Outcome of oesophagectomy for adenocarcinoma of the oesophagus and oesophagogastric junction. *ANZ J Surg* 2005; 75: 513-519.
- [29] Bouvier AM, Binquet C, Gagnaire A, Jouve JL, Faivre J, Bedenne L. Management and prognosis of esophageal cancer: Has progress been made? *Eur J Cancer* 2006; 42: 228-233.
- [30] Popat S, Lopez J, Chan S, Waters J, Cominos M, Rutter D, Hill ME. Palliative treatments for patients with inoperable gastroesophageal cancers. *Int J Palliat Nurs* 2006; 12: 306-17.
- [31] Lerut T, Naftex P, Moons J, *et al.* Quality in the surgical treatment of cancers of the esophagus and gastroesophageal junction. *Eur J Surg Oncol* 2005; 31: 587-94.

- [32] Davies AR, Deans DA, Penman I, *et al.* The multidisciplinary team meeting improves staging accuracy and treatment selection for gastro-esophageal cancer. *Dis Esophagus* 2006; 19: 496-503.
- [33] Stephens MR, Lewis WG, Brewster AE, *et al.* Multidisciplinary team management is associated with improved outcomes after surgery for esophageal cancer. *Dis Esophagus* 2006; 19: 164-71.
- [34] Crane LMA, Schaapveld M, Visser O, Louwman MWJ, Plukker JTM, van Dam GM. Oesophageal cancer in the Netherlands: increasing incidence and mortality but improving survival. *Eur J Cancer* 2007; 43: 1445-1451.

---

Received: February 20, 2008

Revised: April 8, 2008

Accepted: July 4, 2008

© Tom Bates; Licensee *Bentham Open*.

This is an open access article licensed under the terms of the Creative Commons Attribution Non-Commercial License (<http://creativecommons.org/licenses/by-nc/3.0/>) which permits unrestricted, non-commercial use, distribution and reproduction in any medium, provided the work is properly cited.