



Annual Report 2007

Møller, Jacob Steen; Welin, Charlotte; Jensen, Per Anker; Rørig-Dalgaard, Inge; Laustsen, Jacob Birck; Strøm-Tejsen, Peter; Johannesson, Björn; Hertz, Kristian Dahl; Foged, Niels Nielsen; Ingeman-Nielsen, Thomas

Publication date:
2008

Document Version
Publisher's PDF, also known as Version of record

[Link back to DTU Orbit](#)

Citation (APA):
Møller, J. S., Welin, C. (Ed.), Jensen, P. A., Rørig-Dalgaard, I., Laustsen, J. B., Strøm-Tejsen, P., ... Rode, C. (2008). *Annual Report 2007*. Kgs. Lyngby: DTU Byg, Danmarks Tekniske Universitet.

General rights

Copyright and moral rights for the publications made accessible in the public portal are retained by the authors and/or other copyright owners and it is a condition of accessing publications that users recognise and abide by the legal requirements associated with these rights.

- Users may download and print one copy of any publication from the public portal for the purpose of private study or research.
- You may not further distribute the material or use it for any profit-making activity or commercial gain
- You may freely distribute the URL identifying the publication in the public portal

If you believe that this document breaches copyright please contact us providing details, and we will remove access to the work immediately and investigate your claim.

Department of Civil Engineering Annual Report 2007



DTU Civil Engineering
Annual Report 2007

Editor:

Charlotte Welin

Layout:

Helle A. Meulengrath

Photos:

Simon Klein Knudsen/MAKWERK

Inge Rörig-Dalgaard

Lisbeth M. Ottosen

Jacob Birck Laustsen

2. Maj

Kristian Hertz

Thomas Ingemann-Nielsen

Per Goltermann

Expan A/S

Carsten Lind

Poul Linnert Christiansen

4you/dtu

Printed in Denmark by Schultz Grafisk, Albertslund
ISBN: 978-87-87336-03-1

DTU Civil Engineering
Technical University of Denmark
Brovej, Building 118
DK-2800 Kgs. Lyngby

Phone: +45 4525 1700

Fax: +45 4588 3282

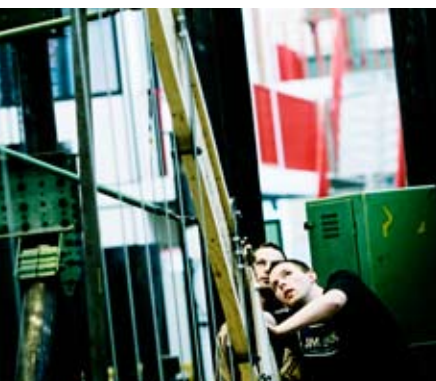
byg@dtu.dk

www.byg.dtu.dk

Front Picture: PhD student Anders Ole Stubbe Solgaard, DTU Civil Engineering

Contents

From the Head of Department	05
Organisation	06
Selections from 2007	07
A new research centre	07
Electrochemistry for preservation of cultural heritage	08
A new shading system lights the dark and saves energy	10
Simulated flights improve the indoor environment in aircraft	11
New advanced models can improve concrete constructions	12
Double Degree in Civil Engineering at TUM and DTU	13
Permafrost model predicts impacts of future climate changes	14
Concrete elements - from teaching to innovation	16
Nutaaliorfik - a show window for new sustainable projects	17
Self-Compacting Concrete, the concrete of the future	18
There is a need for more PhD students	19
Publications	20
Journal papers, ISI-indexed	20
Journal papers, peer reviewed	21
Books	22
Book chapters	22
Conference papers, peer reviewed	23
Reports	27
PhD theses	28
MSc theses	28
BEng theses	30
Staff, education, research, finance	34



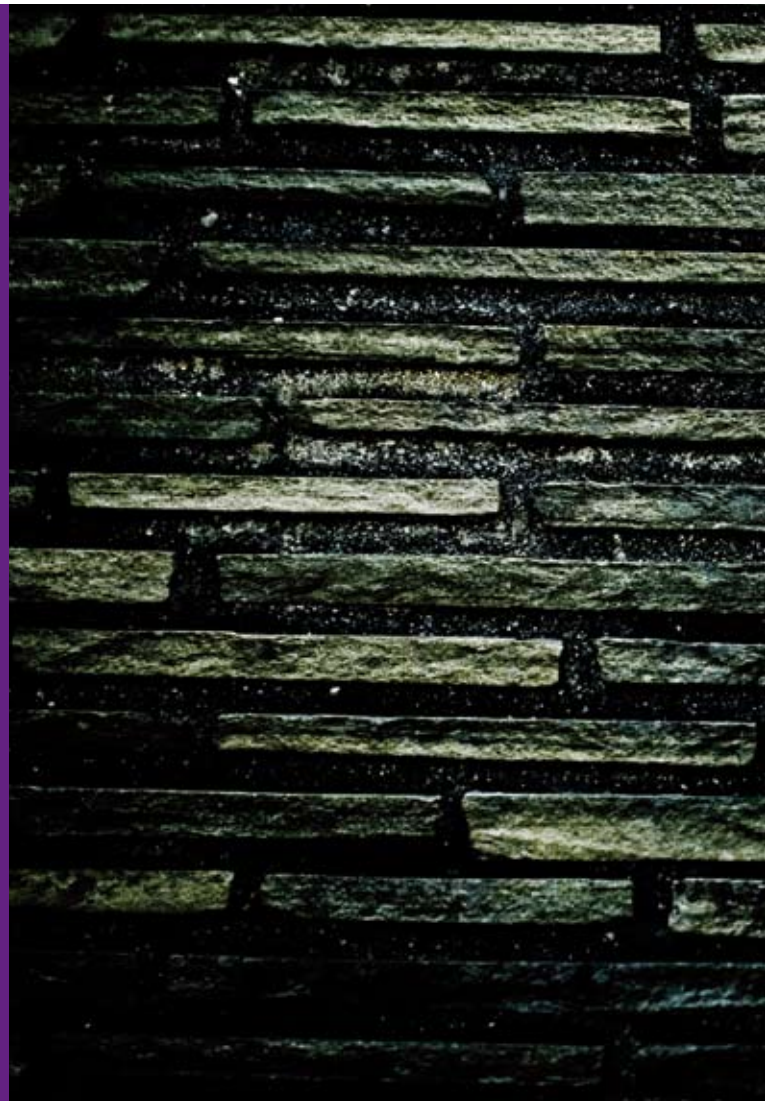
Management Report 2007:

A prosperous year for DTU Civil Engineering

DTU Civil Engineering is a university department within the building and construction sector.

Our mission is education, research, innovation, and public sector consultancy. Through our work we contribute to the generation of social and commercial value.

Our vision is to become a leading European Civil Engineering Department and a preferred partner for companies, authorities, and institutions in the building and construction sector.



Civil engineering education in Denmark started in 1857 when professor Ludvig Holmberg was employed at the Technical University of Denmark, then called "Polyteknisk Lærestalt". Since then Danish civil engineers have contributed with science based engineering solutions to social and economic value creation both in Denmark and internationally. DTU Civil Engineering celebrated the 150 years jubilee with a series of activities culminating at the "B150 conference" in November 2007.

Today DTU Civil Engineering covers most civil and architectural engineering research disciplines and offers engineering education at bachelor, master and PhD level in all areas of civil and architectural engineering.

Research

DTU Civil Engineering's Strategy 2003-08 identified facilities management as a new focus area. Thus it was a great success when the foundation Realdania through a grant of 3.4 million € established the Realdania Research Centre for Facilities Management at DTU.

DTU Civil Engineering has increased its focus on international research publication, and the number of ISI papers increased from 30 in 2006 to 48 in 2007. This is a result of a decision to move publications from conference proceedings and reports to ISI journals when appropriate. The number of ongoing PhD projects increased; 13 PhD projects started in 2007.

DTU's Dean of Research organised an international research evaluation of the department. The evaluation consisted of a self evaluation report and a three day review by an international expert panel. The panel concluded that DTU Civil Engineering since 2003 has followed a clear road map for elevation of the department, and that the changes have moved the average research level upwards to "high national", and that individual research groups have moved their level to "high international". The self evaluation report and the expert panel report are available at www.byg.dtu.dk.

Education

Since 2003 civil and architectural engineering has attracted an increasing amount of qualified students. The number of applicants are now higher than the number we can admit on the Danish bachelor programmes, thus a limitation based on marks from the entry exam is used. The limiting average marks, using the Danish ects-scale, were 7.2 for BSc in civil engineering, 7.1 for BEng in architectural engineering, and 4.1 for BEng in civil engineering. Also the BEng programme in arctic technology experienced an increasing number of applications following a revision of the study programme.

Following the introduction of the Bologna declaration on higher education at DTU in 2004 the first students entered the MSc programme in civil engineering in September 2007. The civil engineering programme had the largest uptake among DTU's



MSc programmes. The Danish Accreditation Institution, ACE Denmark, approved the new MSc programme in architectural engineering, and the first master students began their studies in spring 2008.

The Faculty for Civil Engineering and Surveying at Technical University of Munich, TUM, and DTU Civil Engineering established a double degree programme in Civil Engineering as one of the initiatives under the strategic alliance between TUM and DTU.

Innovation

Collaboration with industry has high priority for DTU Civil Engineering and we increased both the number and the magnitude of industry sponsored research and development projects. Notably the High Tech Network for Low Energy Building, LavEByg, was granted a three year prolongation grant from the Ministry of Research. LavEByg includes nearly 100 companies dealing with energy efficiency technology for buildings.

The Centre for Arctic Technology, ARTEK, was instrumental in creation of an innovation house in Sisimiut, Greenland. This illustrates the potential of the unique link between research at international level at DTU, education in Greenland (Sisimiut) and Denmark (Lyngby), and local innovation in Greenland facilitated by ARTEK. A conference on arctic roads was held in Sisimiut in March. It is a great pleasure that the Greenland Home Rule has

decided to increase the support for ARTEK substantially in the years to come.

The Danish and German governments have agreed to establish a fixed road and rail link across Femern Belt connecting Denmark and Germany. This strategic project will become a pivot of civil engineering in Denmark in the years to come, thus we are pleased that the link owner, Femern Belt AS, has asked DTU Civil Engineering to participate in the project.

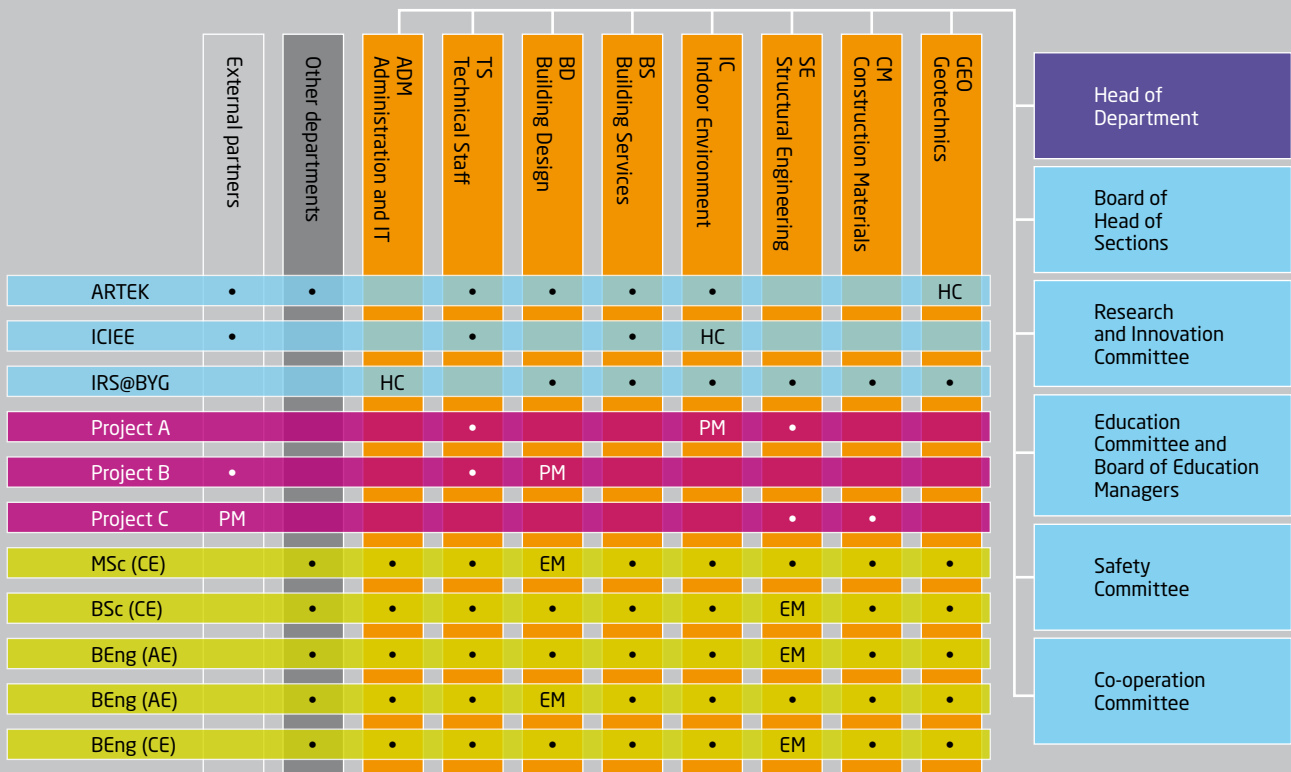
Organisation

As a consequence of the merger between DTU and a number of national research institutes and laboratories DTU Civil Engineering's group on construction, facilities and urban management moved to DTU Management, and the International Centre for Indoor Environment and Energy (ICIEE) moved from DTU Mechanical Engineering to DTU Civil Engineering on January 1, 2008.

Head of Department
Jacob Steen Møller, PhD

jsm@byg.dtu.dk

Organisation



HC: Head of Centre
 PM: Project Manager
 EM: Education Manager
 •: Project/Education Participant

Figure: Organisation Diagram

Study Programmes and Education Managers:

- Building Technology (BSc).
Associate Professor Per Goltermann
- Arctic Technology (BEng). In Greenland,
Associate Professor Hans Peter Christensen.
In Denmark, Associate Professor Egil Borchersen
- Building Engineer (BEng).
Associate Professor Egil Borchersen
- Civil Engineering (M.Sc).
Associate Professor Kristian Hertz.
- Architectural Engineering (BEng).
Associate Professor Lotte Bjerregaard

Department of Civil Engineering hosts the following centres:

- IRS@BYG, The International Research School for
Civil Engineering. Head of Department Jacob S. Møller.
- ARTEK, Arctic Technology Centre.
Professor Arne Villumsen.
- ICIEE, Centre for Indoor Environment and Energy.
Professor Bjarne W. Olesen.

The Advisory Board:

- Professor (adj.) Louis Becker Architect MAA, AIA, RIBA
Design Director, Partner, Henning Larsen Architects.
- CEO Ingelise Bogason, ALECTIA.
- Division Director Niels Kjeldgaard, MTHøjgaard.
- Head of Office Lasse Sundahl, Danish Enterprise
and Construction Authority.
- Senior Vice President Carsten Winther,
Group Technology, Rockwool International.



A new research centre is established at DTU

Many organizations and institutions have participated in the formation of the new centre at DTU.

The centre aims to create a lasting and highly qualified environment for Facilities Management research at DTU in particular and in Denmark in general



Associate professor Per Anker Jensen
Head of Centre for Facilities Management
pje@byg.dtu.dk

In 2007 it was decided to establish a new research centre concerning Facilities Management (FM) at DTU. The purpose is to strengthen research within this relatively new subject. FM concerns the management of the physical surroundings for the activities in an organisation and has developed as a new field of practice since 1990 in Denmark.

FM represents a new paradigm compared to the traditional view on building operation and maintenance with a technical focus on buildings. DTU Civil Engineering introduced FM in the department's strategy from 2003.

A pre-project was made in agreement with the private Danish foundation Realdania and carried out at the Department of Civil Engineering from March to September 2007. The result was a plan for the research centre and in October 2007 the Realdania adopted the plan together with a donation of more than € 3 million over a five year period.

Research profile

A central part of the plan for Centre for Facilities Management (CFM) is the definition of the research profile and themes. The profile is in short defined as research in:

- Space for humans
- Buildings with user value
- Property and infrastructure, that facilitates.

The main focus of the centre is the interrelationships between physical environments and social activities and how professionally managed and serviced physical surroundings can support and improve the conditions and activities of humans and organizations. CFM aims to create new knowledge and insight that can contribute to the strategic thinking about the built environment in relation to visions for the development of organisations and the needs of the users.

Seven project

From the beginning the following seven projects are planned:

1. Workplace Management
2. Facilities for Creative Environments
3. Implementation of Operational Knowledge in Building Projects
4. Sustainable Facilities Management
5. ICT-based Innovation in Facility Management Supply Chain
6. The Market for Facilities Management in Denmark
7. Strategic Partnerships within Facilities Management

CFM was initiated New Year 2008 with a physical and administrative base at a new Department for Planning, Innovation and Management at DTU, but CFM involves a number of other research institutions. The centre has a governance structure with a steering committee chaired by head of department Jacob Steen Møller, DTU Civil Engineering. The steering committee is supported by an advisory scientific committee with two professors from Norway and Sweden. As head of the centre I am responsible for the day to day management and administration of CFM.

CFM aims to create a lasting and highly qualified environment for FM research at DTU in particular and in Denmark in general. One of the measures is to start a number of PhD studies and it is expected that the results will be used in developing the teaching in Facilities Management at DTU and other educational institutions. The research will be mostly practice oriented and close collaboration with companies and organizations is planned.



The opening of the new centre was accompanied by jazzmusic

Electrochemistry for preservation of cultural heritage

A PhD project at DTU Civil Engineering is initiated due to a specific demand: a cheaper and more efficient method to extract the damaging salts in church vaults



PhD Inge Rörig-Dalgaard
Section for Construction Materials
ird@byg.dtu.dk



An item in the news in September 2003 pointed out the need for a cheaper and more efficient method for avoiding deterioration of the church murals and thereby the cultural heritage. Many church murals are damaged by salt in the vaults, and restoration is simply too expensive for some local parochial church councils, who has the ownership and the expenses. Financial support from the Villum Kann Rasmussen and Realdania foundations made it possible to initiate a PhD project on the subject at the DTU Civil Engineering.

The method

By application of direct current, a DC field, to a moist, porous material ion (dissolved salt) extraction will occur at high ion concentrations and water transport in case of low ion concentrations.

The principle of using electrochemistry for water transport and salt extraction from masonry has been known in Denmark and several other European countries for decades. However, due to a lack of documentation, such methods are not recommended for use by independent research institutes. Further more there are side effects from the application current that needs to be handled in a proper way before the electrochemical methods are safe to use.

In case of ion transport in an electric field the basic principle is simple attraction towards the electrodes in a liquid. Meanwhile the method is influenced from water content, ionic mobility, applied current, the non-uniform current distribution (figure) and especially electrode reactions. By electrode reactions the electrons in the electrodes are transformed to ions in the solutions, resulting in decomposition of the electrode material, acid/base production and decreased efficiency.

The invention

Water transport caused by an electric DC field in porous building materials is more complicated, because the water transport is proportional to the inner surface charge of the material. This means that the water transport is varying for each specific material. In case of bricks for example the inner surface charge is related to the original clay mixture and burning conditions. Documentation therefore includes extensive material characterization. Benefiting from previous and present electrokinetic research at DTU Civil Engineering on soil, wood, fly ash and harbour sediments made it possible to overcome the side effects from the electrode reactions though new developments. Presently an inven-



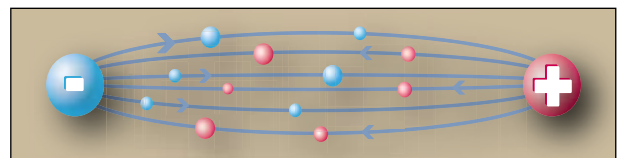
DTU Civil Engineering is planning a pilot plan experiment on church murals in the "Birds room" at the Carmelite monastery in Helsingør. The murals are damaged by salt and restoration is essential to save the cultural heritage

tion is taken over by DTU and the patent application is just about to be submitted.

Proven in laboratory

Through developments with single bricks it was possible to overcome the side effects and a high reduction in salt content from 1.0 wt% to a very low and unproblematic content of 0.01wt% was reached. On the basis of the present project the method is now considered proven in laboratory scale by advising engineers and researchers.

An experiment in a larger scale on a wall section has been carried out too, showing encouraging results. Shortly, a pilot plant experiment will be initiated at the Carmelite monastery in Helsingør in the so-called "Birds room" where presence of the salts is thought to be the main reason for deterioration of the painting. The PhD project is completed primo October 2008.



The electrochemical method for salt removal is not only applicable for church vaults. It can also be used for salt extraction from infected masonry of normal houses and a pilot plant for such treatment is seen here

A new shading system lights the dark and **saves energy**

DTU Civil Engineering has designed a solar shading device that reduces the energy demand in glazed buildings by reducing the solar gains and improving the utilisation of daylight



Research assistant Jacob Birck Laustsen
Section for Building Physics
jbl@byg.dtu.dk

The increasing need for energy savings and good daylight conditions in buildings brings about large challenges when designing facades for future buildings. The widespread use of highly glazed facades in office buildings results in large cooling demands which must be reduced with efficient solar shading devices. At the same time good daylight conditions are required in order to save energy for lighting and provide good visual indoor climate.

In buildings with large room depth compared to the window area, the daylight level is often insufficient in the back of the room to obtain a daylight factor of two percent. Furthermore the poor daylight conditions are worsened by the traditional fixed solar shading systems often used in modern glazed office buildings. Therefore there is a need for combined systems of flexible solar shading and light directing devices that, in addition to reducing the solar gain, will optimise the distribution and utilisation of the daylight. Such a solar shading system was developed at DTU Civil Engineering based on the idea of professor Svend Svendsen, and a full scale prototype mounted on a glass façade fitted in a test room at DTU (fig. 1 and 2).

Shading system

The shading system consists of variable horizontal glass lamellas with high reflective coating. The lamellas can be rotated in different positions depending on the requirements for solar shading or improved daylight conditions. On sunny days the lamellas are rotated into vertical position acting as an extra layer of solar control glass reducing the solar energy gain, but still allowing a good view out. On overcast days the lamellas are rotated 30 degrees with the reflective surface upwards. In this position the light from the sky is reflected into the room, up in the ceiling and further back in the room where the light is most needed (fig. 3).

Daylight measurements on the glass lamella system under overcast sky show that the daylight factor is reduced close to the façade where there is plenty of daylight. In the meantime the daylight factor, with the lamellas, is unchanged or even higher in the back of the room (fig. 4).



Fig. 1 The solar shading system with the lamellas in daylight redirecting position.



Fig. 2 The solar shading system with the lamellas in shading position.

Improved indoor climate

Consequently the light directing glass lamellas provide a better distribution of the daylight in the room resulting in improved visual indoor climate and reduced energy demand for electric lighting compared with traditional non transparent lamella systems. Under sunshine conditions the illuminance level in general and the solar gains are reduced resulting in energy savings for cooling and ventilation.

The same promising results have been found in preliminary calculations. Thus, the presented solar shading system is able to reduce the energy demand for cooling by controlling the solar gains and still maintaining good daylight conditions and a satisfactory view out. The project is carried out in co-operation with the Danish Building Research Institute.

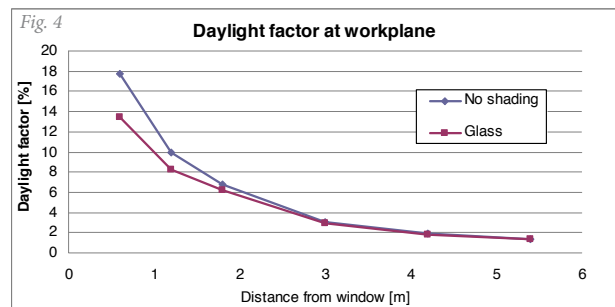


Fig. 4 Measured daylight factors for overcast sky. Blue: No lamellas. Red: reflecting glass lamellas tilted 30 degrees

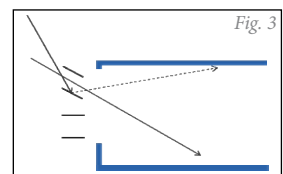


Fig. 3 Principle of the light directing lamellas

Simulated flights improve the indoor environment in aircraft

A study at the International Centre for Indoor Environment and Energy at DTU shows that even low levels of ozone in an aircraft cabin causes symptoms such as eye and nasal irritation, smarting eyes and headache.



Peter Strøm-Tejsen, PhD
International Centre for Indoor
Environment and Energy
pst@byg.dtu.dk



Physiological measurements performed inside the section of a simulated Boeing 767 aircraft cabin at the International Centre for Indoor Environment and Energy at DTU.

Boeing 787, Dreamliner, was presented for the public in 2007 at Everett Airport, Washington. The Indoor Environment System in the flight is created in co-operation with researchers at DTU Civil Engineering.



The environment in an aircraft cabin differs in several ways from other indoor environments e.g. offices and homes, due to the large number of occupants, the confinement of the passengers to their seats, and a much higher rate of air exchange. During flight, occupants experience low humidity (usually lower than 20 percent RH), reduced air pressure (as low as three-quarters that at sea level), and, at times, exposure to elevated ozone concentrations.

A three-row, 21-seat section of a simulated Boeing 767 aircraft cabin has been built in a climate chamber at the International Centre for Indoor Environment and Energy at DTU. The experimental facility simulates the cabin environment not only in terms of materials and geometry, but also in terms of cabin air and wall temperatures and ventilation with very dry air (comparable to that of outside air at altitude). This realistic simulation enables subjective assessments of the symptoms commonly experienced by passengers and crew during flights.

Human exposure studies

Six investigations have covered four environmental areas of study i.e. humidity, air purification techniques, ozone, and thermal effects, each investigation with four groups of 17 subjects acting as passengers and crew during 7-11 hour simulated transatlantic flights. These studies were sponsored primarily by the Boeing Company.

The humidity study, examining the optimum balance between fresh air supply and humidity, showed that increasing relative humidity in the aircraft cabin by reducing outside air flow did not reduce the intensity of symptoms typically experienced in the aircraft cabin. In stead it intensified complaints of headache, dizziness

and claustrophobia, suggesting that air pollutants rather than low humidity cause the distress reported by airline passengers. Three investigations studying the efficacy of various air purification technologies showed that a gas phase adsorption purification unit performed better than two different photo-catalytic oxidation units, although all three units greatly reduced the concentration of air pollutants in the cabin. The future Boeing 787 Dreamliner will therefore be equipped with the gas phase adsorption purification unit based on the DTU research.

A principal cause

Results obtained from the ozone investigation, supported by the US Federal Aviation Administration, indicate that the presence of ozone and ozone initiated chemistry in the aircraft cabin is a principal cause of a number of those symptoms commonly associated with the aircraft cabin e.g. air quality factors such as eye and nasal irritation and Sick Building Syndrome, SBS symptoms, such as smarting eyes, headache, dizziness and claustrophobia. It suggests that it would be beneficial to remove ozone at levels less than currently specified.

The last study, investigating the influence of air temperature on passenger comfort and symptoms, showed that cabin air temperature did not change symptoms typically observed in the cabin but affected the perception of air quality, air freshness, and thermal sensation, improving these perceptions when temperature was lowered.

Until now, subjects have spent more than ten thousand hours in the simulated cabin, and the study has resulted in numerous published papers.

New advanced models can improve concrete constructions

Researchers at DTU Civil Engineering have in co-operation with international researchers developed a method to estimate and predict the changing climate's effect on outdoor concrete constructions. The new knowledge can save money and prolong the lifetime of the constructions



Associate professor Björn Johannesson
Section for Construction Materials
bjjo@byg.dtu.dk

Outdoor concrete constructions are exposed to climate variations which can lead to durability problems. Common problems are chloride induced reinforcement corrosion, salt induced freeze/thaw damages, sulfate attack and leaching of calcium hydroxide. At the time being there is no method which in a stringent way can handle the outer climate variations and its effect on the durability of the concrete cover. The existing models treat almost always only constant outer climate conditions, and water saturated pores in the concrete, which actually has few real applications. Furthermore, most of these models does not account for the charged character of the important ionic species which being transported in the material, treating them as uncharged particles unaffected of other types of ions present.

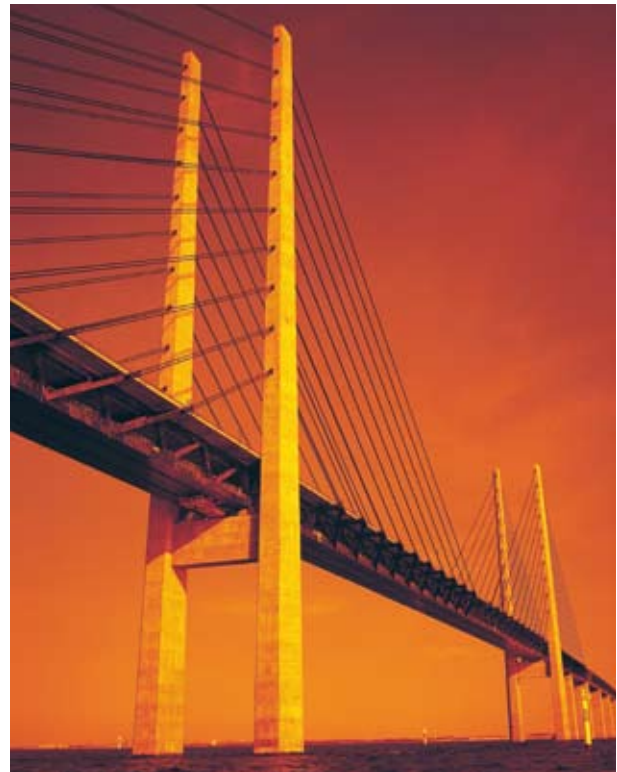
Important concrete constructions are today designed with regard to durability with heavily simplified methods of empirical nature based on data of experiments running for only a few years. In this constructions are designed for 100 years performance, without having in all parts quantifying all central material parameters and its empirical time dependence has not been fully understood and explained.

Such predictions become highly uncertain with the risk that high costs must be spent on reparations and maintenance at early ages. Another problem can also be that too strong demands are given on constructions using the rough models, which in turn contributes to difficulties in production.

New knowledge

Today, instead, there exist experimental evidence and verifications on the ionic multi-species diffusion, that is, diffusion of different types of ions, such as chlorides, hydroxide, and potassium, in the pore solution of concrete. New knowledge about how the moisture transport affects the ionic multi-species diffusion is also being established.

The effect of considering the ionic multi-species in durability models has during the last years been studied in Laval University in Quebec, Canada, Lund University and Chalmers University in Sweden, Technical University of Denmark and at Taiheiyo Cement in Japan. The moisture transport problem has been studied intensively in the Nordic countries and internationally for many years. In which way the moisture transport affects the ionic multispecies is in many part unknown, especially when considering the important coupling to the chemical interactions between ions in the pore solution and in the solid components of the cement in the concrete.



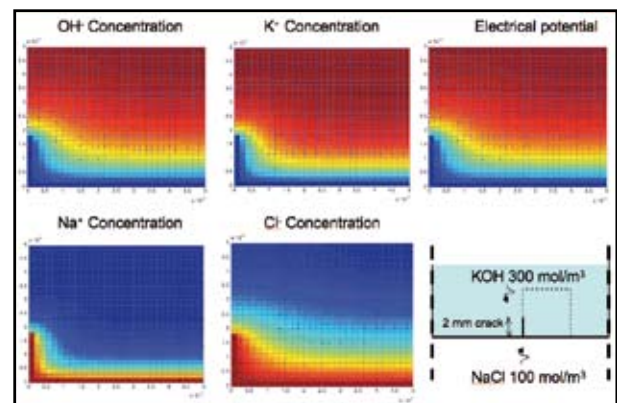
Øresund bridge:
The choice of the concrete composition in Øresund Bridge is partly a result of research involving mathematical modeling of its degradation

Advanced methods

The modeling of this type of behavior is presumed to be important as it is now possible to model cases, which is much more related to the real occurring behavior as compared with the much more simple traditional models.

In the project advanced numerical methods are applied together with advanced so-called hybrid mixture theories defined within the continuum mechanics. The finite element method is used to solve the coupled transient differential equations which stems from the continuum approach using suitable constitutive assumptions.

Tailored programs are implemented in the project using non-linear solution techniques and the finite element method. Results from different simulations are compared with measurements of several different chemical elements in concrete. In this respect, mainly, measurements from an electron micro probe analyzer are used.



Example of calculated results regarding ionic concentrations in a domain of concrete exposed to seawater. Penetrating chlorides is harmful due to its ability to accelerate reinforcement corrosion



The Airport in Munich provides a fine example of what may be a result of an education at DTU and TUM.

Double Degree in Civil Engineering at TUM and DTU

A new agreement between Denmark and Germany on teaching and research means that Danish students can study in Munich.



Associate professor Kristian Hertz
Section for Building Design
khz@byg.dtu.dk

DTU Civil Engineering and the Faculty of Civil Engineering and Geodesy at the highly reputed Technical University of Munich (TUM) have made an agreement on teaching and research. The agreement is quite comprehensive and comprises a Double Degree in Civil Engineering. This means that students fulfilling the criteria can obtain a diploma as Master of Science in Civil Engineering from TUM as well as from DTU.

A specialised double degree has already been established in computational mechanics, but the new double degree comprises all aspects of civil engineering.

In addition to the double degree, the agreement comprises exchange of students for master projects and for course work, summer courses, PhD courses, exchange of faculty for teaching and research, research collaboration, organisation of common workshops and collaboration on accreditation of the departments. The first students already benefit from the new agreement including the most advanced knowledge from the two universities in their education.

New MSc in Architectural Engineering

Architectural Engineering educations are popular with industry and students. Therefore, DTU Civil Engineering has established a new study programme from spring 2008.

The Bachelor education in Architectural Engineering has proved to be a success attracting very qualified students. It is a Bachelor of Engineering education, which is designed to prepare the students for practise in three and a half year. However, many students prefer to extend their study with a Master of Science education in Civil Engineering often supplemented with courses from a school of architecture, and the companies of the building sector agrees that Architectural Engineers at a MSc level would be of interest for many applications.

The Department of Civil Engineering at DTU has therefore established a Master of Science education in Architectural Engineering. The new education contains two study lines: Structural Design and Functional Design, which in this context means building services, comfort, and building energy. The new study is offered from spring 2008.

Permafrost model predicts impacts of future climate changes

The Arctic Technology Centre at DTU Civil Engineering is involved in a research project on changes in permafrost in Greenland and Alaska. The results will enable decision makers to evaluate the impacts on society



Head of Research
Niels Foged
Arctic Technology Centre,
Section for Geotechnics
nf@byg.dtu.dk



Assistant professor
Thomas Ingeman-Nielsen
Arctic Technology Centre,
Section for Geotechnics.
tin@byg.dtu.dk

Everyone talks about climate changes and generally scientists expect temperature increases on a global scale. According to the fourth assessment report from IPCC – UN's Intergovernmental Panel on Climate Change – the average global temperature is expected to increase between 2.8 and 7.8 degrees C in the course of the coming century, and the polar areas are expected to see larger temperature increases than the rest of the globe. In Midwest Greenland the mean annual air temperature has increased by approximately four degrees C over the past decade, and this has had consequences for constructions and infrastructure.

The reason is that the temperature changes affect the thermal regime of the ground, and thereby the distribution of permafrost. Permafrozen areas may contain large amounts of ice, the volume of which may exceed by far the natural unfrozen porosity of the ground. Thawing permafrost may therefore result in large settlements and thereby greatly affect on existing roads, airport runways and buildings, as well as larger future construction and infrastructure projects.

Research project

The Arctic Technology Centre (ARTEK) at DTU Civil Engineering is presently involved in a research project on changes in permafrost

in Greenland and Alaska. The project is funded by the American research council, National Science Foundation (NSE, project ARC-0612533), and one of the goals is to integrate climate and permafrost modelling and make the results available in a form suitable for decision makers. The project is a cooperation between the University of Alaska Fairbanks (UAF), the Danish Meteorological Institute (DMI), ASIAQ (Greenland Survey) and ARTEK.

We are currently calibrating a climate driven permafrost model for the two regions (west Greenland and the northern part of Alaska) by means of data from new and existing climate and ground temperature measurement stations. DMI's regional climate model, which is being modified to unprecedented high spatial resolution of 5-10 km², delivers temperature and precipitation data for future climate scenarios as input to the permafrost model. The model will be used to calculate the effect of different temperature scenarios for the 21st century on permafrost distribution and thickness in Greenland and Alaska.

Focus of the project

The west coast of Greenland is the most densely populated area of the country, and thus climate changes are expected to have greatest



Data collection from the ground temperature measurement station in Kangerlussuaq (Søndre Strømfjord in Greenland).

impact on the society in this area. The project therefore focuses on this area, which is even more interesting because it spans several different permafrost zones. In cooperation with ASIAQ, ARTEK has established a series of measurement stations in towns representative of the different climate zones on the Greenlandic west coast. These investigations will result in a technical characterization of the geological materials found in the different areas, such as the ice content and strength parameters. The investigations have already shown large variations in local conditions in the different towns.

The large local variations emphasize the necessity of establishing reliable predictions of climate related impacts on constructions and infrastructure, in order to be able to prioritize in technological and economical decisions to the benefit of society. One of the main goals of the project is therefore to produce risk zonations for the Greenlandic towns, based on concrete technical investigations combined with a quantitative assessment of how permafrost will react to the modelled climate scenarios.

This will enable decision makers in Greenland to evaluate impacts on society with a special view to planning, mitigation and adaption to future climate changes.

Permafrost The term “permafrost” is used about any type of soil or rock, for which the temperature is below 0° C for two years or more. The definition is applied without regard to the type of material or phase of the pore water (ice/water). Approximate 25 % of the land masses of the world are covered by permafrost. Permafrost can vary in thickness from very thin sections to layers many hundred meters in thickness.



Example of a sensitive clay deposit which has a water content above the liquidation limit after thawing

Concrete elements

- from teaching to innovation



Cooperation with the industry in teaching and student projects leads to innovations in modern practice. New simplified design formulas have been developed and lead to simpler and cheaper design procedures.



Associate professor Per Goltermann
Section for Structural Engineering
pg@byg.dtu.dk

Reinforced concrete is the world's most used construction material due to its cost-effective performance, this makes design of concrete structures one of the key qualifications all civil engineers must have. This is why DTU Civil Engineering teaches concrete structures to app. 300 students annually and why a large number of students each year choose to work with concrete in their projects.

Concrete has been used for many years, but there is still a large need for research, development and innovations in order to optimize the use of the material and perhaps also to reduce the use of cement and reinforcement in order to reduce the costs and environmental impact.

DTU Civil Engineering has been able to carry out a large number of student projects, where the students work together with the industry on relevant problems, leading to innovation, research and even scientific publications.

Performance of the elements

Precast elements are used extensively in Denmark, where 20-30.000 precast elements of lightweight aggregate concrete with open structure are used annually, corresponding to over 50 percent of the walls in the building structures. The elements use far less cement and reinforcement than ordinary concrete structures as the elements are lightly reinforced and as the concrete with open structure uses far less cement than ordinary concrete. The downside of these resource savings is that the verification of the performances may require additional work in some situations.

One of the time consuming activities in the design of precast concrete structures is thus the verification of the buildings overall

Buildings with prefabricated wall elements like Betty Sørensen Parken in Vejle, a home for old people, is popular, although window and doors requires large openings in the elements. This requires large shear capacities in the elements

stability, where the elements need to perform as shear walls, where the low content of reinforcement leads to time consuming estimations. The estimations are traditionally based on quite simplified and conservative models, which only take a part of the elements into account.

Student projects

Teams of students have in their projects designed a number of elements, which were produced by the industry and later tested in full-scale in the laboratories at DTU Civil Engineering, verifying capacities of 10-25 times the required capacities. The students have also estimated the shear wall capacities of the elements, using traditional concrete plasticity theories in FEM-estimations and plasticity models for predicting the behavior and capacity of the walls.

As a result of these projects, simplified design formulas have been developed, leading to an integrated estimation of the shear wall capacities with 100-200 percent increase of the design capacities and a simpler design procedure. These formulas will be made available to producers, consultants, national authorities and the Code Committee later this year.

The future

The projects and the innovative cooperation with the industry have spawned a number of research and development projects, and have also lead to an increase of the student projects in the field of modern concretes, improved shear wall designs and even to projects in the field of reduced or alternative reinforcement – as e.g. the use of plastic fibers, which are not only durable and non-corrosive, but which can actually replace the traditional steel reinforcement .



Testing of 12 m² large panels with window holes revealed in-plane shear strengths of up to 450 kN.

Nutaaliorfik

- a show window for new sustainable projects

The Greenland Innovation Centre was established in 2005 as an activity centre for the development of Arctic technology.



Artek student projects are currently being exhibited in the Greenland Innovation Centre. Here a student presents an installation of tubular heat collectors



The picture illustrates part of daily life in Nutaaliorfik – home for good ideas, models and innovative solutions in the fields of construction, energy and the environment.

Artek student projects are currently being exhibited in the Greenland Innovation Centre. Here a student presents an installation of tubular heat collectors



Professor Arne Villumsen
Arctic Technology Centre
av@byg.dtu.dk

In the old shipyard in the Sisimiut harbour area the Arctic Technology Centre, ARTEK, at DTU has got the opportunity to promote sustainable, innovative solutions in the fields of construction, energy and the environment. Solutions that show special consideration for Greenlandic society, the environment and the climatic conditions distinctive of Arctic areas are here exhibited.

The innovation Centre - Nutaaliorfik, in Greenlandic language - focuses on developing good ideas with the potential for transformation into sustainable business projects.

Filled with good ideas

The Innovation Centre was established in 2005 and after an extensive rebuilding it was opened for use the following year. It is now filled with good ideas, posters and models. Companies are exhibiting their products (heat exchangers, solar collectors, hydro power turbines, small waste water treatment plants etc).

Inventions made by ARTEK are also demonstrated here. An example is building materials – bricks and floor tile - produced of local raw materials.

Nutaaliorfik represents a natural development of the activities currently being run under the auspices of ARTEK. The best student projects developed during courses in Arctic Technology can be seen here in a physical model or as a poster – and the idea is to promote the ideas to the professional society. The final goal is to support and inspire so much that new innovative companies will be established.



Nutaaliorfik – the Greenland Innovation Centre is situated in the old shipyard in the Sisimiut harbour.

Self-Compacting Concrete, the **concrete of the future**



The extension to the Ordrupgaard Museum consists of structural elements, each with a unique geometry. The extension is made of glass and SCC cast in situ and is an example of the architectural freedom in structural design allowed by SCC.

Self-Compacting Concrete, SCC, was introduced in the 1980s and has continuously been an object for improvement and research. DTU Civil Engineering together with two other departments at DTU and the industry conduct a cross disciplinary project within technology and production science.

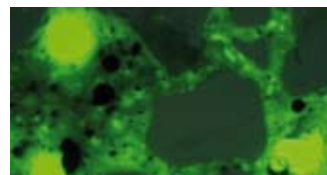


Associate Professor Mette Geiker
Section for Construction Materials
mge@byg.dtu.dk

Concrete is the world's most important construction material. In Denmark 10 million tons are produced annually. Conventional concrete requires vibration to overcome its yield stress and become compacted. Vibration is noisy, labour intensive, and can introduce inhomogeneities in the concrete. To overcome the need for vibration, Self-Compacting Concrete, SCC was introduced in Japan in the 1980s when new types of admixtures became available. SCC is a tailored concrete with special, engineered properties in its fresh state. SCC flows into the formwork and around reinforcement by its own weight. This drastically improves both productivity and the working environment during construction, and potentially improves the homogeneity and quality of the concrete. Moreover, SCC allows greater architectural freedom in structural design. SCC has since its introduction been an object for research in order to improve its properties, and at the Department of Civil Engineering at DTU research is focused on several aspects of SCC: from the impact of mix composition and mixing procedure on the rheological properties of fresh SCC, possible sources of error in testing to numerical modelling of flow and the engineering properties of the hardened material.

Challenges and opportunities

The main challenges and opportunities in using SCC lie in its robustness and the compatibility of constituent materials, the modelling of flow and virtual mix design, and last but not least, its sustainability. Robustness, i.e. the capacity of concrete to retain its fresh properties



Effect of mixing intensity and mixing schedule on the microstructure of a typical Danish SCC. Detail of fluorescence impregnated thin sections, area 2.0 x 1.2 mm. Photos were taken in UV light.

when small variations in the properties or quantities of the constituent materials occur, is vital for the success of SCC. SCC is generally more sensitive to variations in the content and properties of the constituent materials than conventional concretes. So it is essential to develop tools for the assessment and optimisation of mix design and casting. A major obstacle for further application of SCC is the lack of understanding of the form filling process, leading from time to time to problems such as segregation. Segregation significantly reduces the concrete quality which subsequently leads to problems during the service life of structures.

New prediction tools

It has in a recent industrial PhD project been demonstrated that a complete framework consisting of numerical, single fluid flow modelling and rheological testing and characterization can be established, yielding consistent results with the full-scale form filling of SCC. The industrial PhD project was undertaken by Lars Nyholm Thrane, Danish Technological Institute, in collaboration with Unicon, the Departments of Chemical and Biochemical Engineering and Civil Engineering at DTU.

Further work is planned in a cross disciplinary collaboration research project within technology and production science, focusing on solutions to scientifically unsolved problems in the construction industry. The project group consists of DTU Civil Engineering, the Department of Mechanical Engineering at DTU, and the Department of Chemical and Biochemical Engineering at DTU together with a group of associated partners from the industry and an international research institute. The main objective of the project is to improve the basic understanding of the flow behaviour of SCC. The research will produce tools for the prediction of the casting process itself (formwork filling and formwork pressure) along with the prediction of the occurrence of hidden defects such as heterogeneities and weak interfaces. The project will result in a modelling framework for numerical simulation of full scale casting of SCC. These prediction tools will facilitate optimisation of resources and reduction of CO₂-emission supporting the necessary sustainable development.

The Danish Government wants to double the number of PhD candidates in the following years, but many candidates in civil engineering choose to go on the job market instead of a pursuing career as a researcher. DTU Civil Engineering arranges annual PhD days to present the students with the possibilities as a PhD student.



The Technical University of Denmark and the departments plan a lot of arrangements every year to attract new students and PhD students. Besides the annual PhD days the university keeps an open house arrangement every year for students.

There is a **need** for more **PhD students**



Associate professor Carsten Rode
Section for Building Physics and Services
car@byg.dtu.dk

Fresh candidates in civil engineering are in big demand on the job market, and the candidates look forward to start in their first “real job” after education. Therefore, the possibility of entering into a career as a researcher has not always been sufficiently investigated before the candidates leave DTU

Regardless of this, it has been the goal of the Danish Government since its Globalisation Council completed its work in 2006 that the number of PhD candidates should be doubled within a short number of years, and an important purpose of this development should be to also get a significant number of PhDs into the industry. This was the background why DTU Civil Engineering, arranged a seminar on February 28, 2007 to explain about the possibilities to obtain a degree as PhD degree.

The seminar was arranged as a late afternoon event which included presentation by a number of representatives of stakeholders. The seminar addressed students in their last one or two years of studies so that it could directly stimulate them to consider a research career and so that they could possibly shape the last part of their studies in order to prepare for their continuation into research education.

New academic insight

Presenters at the seminar comprised young and experienced PhD candidates who now work in industry as contractors, building material manufacturers or consultants, or as researcher in a technological service institute. The candidates today have highly professional technical functions in their companies, or they possess strategic positions. The companies expressed that employment of a PhD means not only engaging a very skilled colleague to fulfill daily tasks in the business, but typically such a person also brings new academic insight, quality and thoroughness into the company. Furthermore, the PhDs are good contact points between the companies and universities and

they become ambassadors in initiating new types of projects and contacts. In another part of the seminar presentations by PhD candidates in progress were given: A freshman as a PhD student, a PhD student amidst his studies, and a PhD candidate who had just defended her thesis. The graduated PhD candidate expressed how the study had provided her with methods to obtain a feeling of high professional competence and overview, while she had gained a lot of good experiences in creating networks and establishing friends among colleagues and acquaintances from participation in conferences and external research visits.

Several forms of PhD projects

A representative from the PhD-administration at the Technical University of Denmark explained about the societal need for many new PhD candidates, and he explained about the different existing forms of PhD projects:

- Scholarships from DTU
- Projects financed by public or private research projects
- Co-financed projects with other research institutions or companies
- Industrial PhDs and Innovation PhDs

The seminar was attended by some 40 potential PhD-students, but also representatives of companies and some of DTU Byg’s supervisors. It was interrupted by a pizza and beer break, during which some first initial contacts were established. DTU had a call for applications for PhD-scholarships a month after the seminar. Eight students applied for scholarship. Although not all of them directly got a scholarship, seven of them today are active as PhD students – hereof two as industrial PhD students. In comparison, five students applied the year before, and three of these are today ongoing.

Publications



Journal papers
-ISI-indexed

Fan, Jianhua; Wang, Yundong; Fei, Weiyang

Large eddy simulations of flow instabilities in a stirred tank generate by a Rushton turbine In: Chinese Journal of Chemical Engineering, vol: 15 (2), p. 200-208 (2007).

Jensen, Pernille Erland; Ottosen, Lisbeth M.; Harmon, Thomas C.

The effect of soil type on the electrochemical remediation of lead-contaminated soil paperid: 10.1089/ees.2005-0122 In: Environmental Engineering Science, vol: 24 (2), p. 234-244 (2007). Mary Ann Liebert, Inc. publishers ISSN: 1092-8758

Jensen, Pernille Erland; Ottosen, Lisbeth M.; Ferreira, Célia

Electrochemical Remediation of Soil Fines (< 63µm) in Suspension: Influence of Current Strength and L/S. DOI : 10.1016/j.electacta.2006.03.116 In: Electrochimica Acta, vol: 52, p. 3412-3419 (2007). ELSEVIER

Geiker, Mette Rica; Nielsen, Erik Pram; Herforth, Duncan

Prediction of chloride ingress and binding in concrete In: Materials and Structures, vol: 40 (4 (RILEM 298)), p. 405-417 (2007). Springer ISSN: 1359-5997

Lura, Pietro; Jensen, Ole Mejlhede

Experimental observation of internal water curing of concrete In: Materials and Structures, vol: 40 (2), p. 211-210 (2007). Springer ISSN: 1359-5997

Lura, Pietro; Jensen, Ole Mejlhede; Igarashi, Shin-Ichi

Measuring techniques of autogenous strain of cement paste In: Materials and Structures, vol: 40 (4), p. 431-440 (2007). Springer ISSN: 1359-5997

Frandsen, Henrik Lund; Svensson, Staffan

Implementation of sorption hysteresis in multi-Fickian moisture transport In: Holzforschung, vol: 61, p. 693-701 (2007). Walter de Gruyter GmbH & Co. KG ISSN: ISSN: 0018-3830

Janssen, Hans; Blocken, Bert; Roels, Staf; Carmeliet, Jan

Wind-driven rain as a boundary condition for HAM simulations: analysis of simplified modelling approaches DOI : 10.1016/j.buildenv.2006.10.001 In: Building and Environment, vol: 42 (4), p. 1555-1567 (2007). Elsevier ISSN: 0360-1323

Sasic Kalagasidis, Angela; Weitzmann, Peter; Rode, Carsten; Nielsen, Toke Rammer; Peuhkuri, Ruut Hannele; Hagentoft, Carl-Eric

The International Building Physics Toolbox in Simulink In: Energy and Buildings, vol: 39, p. 665-674 (2007). Elsevier

Andersen, Elsa; Furbo, Simon; Hampel, Matthias; Heidemann, Wolfgang; Müller-Steinhagen, Hans

Investigations on stratification devices for hot water stores In: International Journal of Energy Research (2007). John Wiley & Sons Limited

Andersen, Elsa; Furbo, Simon

Theoretical comparison of solar water/space-heating combi systems and stratification design options In: Journal of Solar Energy Engineering, vol: 129, p. 438-448 (2007). ASME

Andersen, Elsa; Furbo, Simon; Fan, Jianhua

Multilayer fabric stratification pipes for solar tanks In: Journal of Solar Energy, vol: 81 (10), p. 1219-1226 (2007). Elsevier ISSN: 0038-092X

Koch, Christian; Bendixen, Mads

Negotiating Visualities in Briefing and Design In: Building Research and Information, vol: 35 (1), p. 42-53 (2007). Taylor & Francis

Fischer, Gregor; Li, Victor

Effect of Fiber Reinforcement on the Response of Structural Members DOI : 10.1016 In: Engineering Fracture Mechanics, vol: 74 (1-2), p. 258-272 (2007). Elsevier

Täljsten, Björn; Carolin, A.

CFRP strengthening of concrete beams - testing in sub-zero temperature In: Int. J. Materials and Product Technology, vol: 28 (1/2), p. 29-45 (2007).

Hansen, Henrik K.; Ribeiro, Alexandra B.; Mateus, Eduardo; Ottosen, Lisbeth M.

Diagnostic analysis of electrochemical remediation in mine tailing materials In: Electrochimica Acta, vol: 52, p. 3406-3411 (2007). Elsevier

Ribeiro, Alexandra; Rodriguez-Maroto, J.M.; Mateus, Eduardo; Velizarova, Emilia; Ottosen, Lisbeth M.

Modeling of electrochemical and dialytic removal of Cr, Cu and As from CCA-treated wood chips In: Chemosphere, vol: 66, p. 1716-1726 (2007). Elsevier

Ottosen, Lisbeth M.; Rørig-Dalgaard, Inge

Electrokinetic removal of Ca(NO₃)₂ from bricks to avoid salt induced decay Presented at: 5th Symposium on Electrokinetic Remediation. Ferrara, Italy, 2005 In: Electrochimica Acta, vol: 52 (10), p. 3454-3463 (2007). Elsevier

Jensen, Pernille Erland; Ahring, Birgitte Kiær; Ottosen, Lisbeth M.

Organic acid enhanced electrochemical extraction of Pb from contaminated soil fines in suspension DOI : 10.1002/jctb.1762 In: Journal of Chemical Technology & Biotechnology, vol: 82 (10), p. 920-928 (2007). WILEY ISSN: 0268-2575

Tommerup, Henrik M.; Rose, Jørgen; Svendsen, Svend

Energy-efficient houses built according to the energy performance requirement introduced in Denmark in 2006 DOI : 10.1016/j.enbuild.2006.12.011 In: Energy and Buildings, vol: 39 (10), p. 1123-1130 (2007). Elsevier

Fan, Jianhua; Shah, Louise Jivan; Furbo, Simon

Flow distribution in a solar collector panel with horizontal absorber strips In: Solar Energy, vol: 81, p. 1501-1511 (2007). Elsevier

Ottosen, Lisbeth M.; Pedersen, Anne Juul; Hansen, Henrik K.; Ribeiro, Alexandra B.

Screening the possibility for removing cadmium and other heavy metals from wastewater sludge and bio-ashes by an electrochemical method In: Electrochimica Acta, vol: 52 (10), p. 3420-3426 (2007). Elsevier

Hansen, Henrik K.; Rojo, Adrián; Ottosen, Lisbeth M.

Electrokinetic remediation of copper mine tailings In: Electrochimica Acta, vol: 52 (10), p. 3355-3359 (2007). Elsevier

Janssen, Hans; Blocken, Bert; Carmeliet, Jan

Conservative modelling of the moisture and heat transfer in building components under atmospheric excitation DOI : 10.1016/j.ijheatmasstransfer.2006.06.048 In: International Journal of Heat and Mass Transfer, vol: 50 (5-6), p. 1128-1140 (2007).

Ottosen, Lisbeth M.; Nystrøm, Gunvor Marie; Pedersen, Anne Juul; Vil-lumsen, Arne

Electrochemical extraction of Cd and Cu from sediment from Sisimiut Harbour, Greenland In: Journal of Hazardous Materials, vol: 140 (1), p. 271-279 (2007). Elsevier

Shah, Louise Jivan; Furbo, Simon

Theoretical flow investigations of an all glass evacuated tubular collector In: Solar Energy, vol: 81 (6), p. 822-828 (2007).

Derluyn, Hannelore; Janssen, Hans; Diepens, Jan; Derome, Dominique; Carmeliet, Jan

Hygroscopic behaviour of paper and books DOI : 10.1177/1744259107079143 In: Journal of Building Physics, vol: 31 (1), p. 9-34 (2007).

Frandsen, Henrik Lund; Svensson, Staffan; Damkilde, Lars
A hysteresis model suitable for numerical simulation of moisture content in wood DOI : 10.1515/HF.2007.031 In: *Holzforschung*, vol: 61, p. 175-181 (2007). Walter de Gruyter ISSN: 0018-3830

Frandsen, Henrik Lund; Damkilde, Lars; Svensson, Staffan
A revised multi-Fickian moisture transport model to describe non-Fickian effects in wood DOI : 10.1515/HF.2007.085 In: *Holzforschung*, vol: 61, p. 563-572 (2007). Walter de Gruyter ISSN: 0018-3830

Walter, Rasmus; Olesen, John Forbes; Stang, Henrik; Vejrum, Tina
Analysis of an Orthotropic Deck Stiffened with a Cement-Based Overlay DOI : 10.1061/(ASCE)1084-0702(2007)12:3(350) In: *Journal of Bridge Engineering*, vol: 12 (3), p. 350-363 (2007). ASCE ISSN: 10840702

Jensen, Jesper Ole; Elle, Morten
Exploring the Use of Tools for Urban Sustainability in European Cities In: *Indoor and Built Environment*, vol: 16 (3), p. 235-247 (2007). SAGE publications ISSN: 1420-326X

Johannesson, Björn
Multi-species Ionic Diffusion in Concrete with Account to Interaction Between Ions in the Pore Solution and the Cement Hydrates DOI : DOI 10.1617/s11527-006-9176-y In: *Materials and Structures*, vol: 40, p. 651-665 (2007). RILEM

Roussel, Nicolas; Geiker, Mette Rica; Dufour, Frederic; Thrane, Lars Nyholm; Szabo, Peter
Computational modeling of concrete flow: General overview In: *Cement and Concrete Research*, vol: 37, p. 1298-1307 (2007). Elsevier

Hoffmeyer, Preben; Sørensen, John Dalsgaard
Duration of load revisited DOI : 10.1007/s00226-007-0154-5 In: *Wood Science and Technology*, vol: 41 (8), p. 687-711 (2007). Springer Verlag ISSN: 0043-7719

Jørgensen, Anders Stuhr; Andreasen, Frank
Mapping of permafrost surface using ground-penetrating radar at Kangerlussuaq Airport, western Greenland DOI : 0.1016/j.coldregions.2006.10.007 In: *Cold Regions Science and Technology*, vol: 48 (1), p. 64-72 (2007). Elsevier B.V. ISSN: 0165-232X

Madsen, Bo; Hoffmeyer, Preben; Thomsen, Anne Belinda; Lilholt, Hans
Hemp yarn reinforced composites - I : Yarn characteristics DOI : 10.1016/j.compositesa.2007.06.001 In: *Journal of Composites : Part A*, vol: 38 (10), p. 2194-2203 (2007). Elsevier

Madsen, Bo; Hoffmeyer, Preben; Lilholt, Hans
Hemp yarn reinforced composites - II : Tensile Properties DOI : 10.1016/j.compositesa.2007.06.002 In: *Journal of Composites : Part A*, vol: 38 (10), p. 2204-2215 (2007). Elsevier

Täljsten, Björn; Carolin, A.
CFRP strengthening of concrete beams - testing in sub-zero temperature In: *Int. J. Materials and Product Technology*, vol: 28 (1/2), p. 29-45 (2007).

Täljsten, Björn; Hejl, A.; James, G.
Carbon Fibre Polymer Strengthening and monitoring of the Gröndals Bridge in Sweden In: *Journal of Composites in Construction*, vol: 11 (2), p. 1-9 (2007).

Täljsten, Björn; Blanksvärd, T.
Mineral-Based Bonding of Carbon FRP to Strengthen Concrete Structures In: *Journal of Composites for Construction*, vol: 11 (2), p. 120-128 (2007).

Meyer, Niels I
Learning from Wind Energy Policy in the EU: Lessons from Denmark, Sweden and Spain DOI : DOI:10.1002/eet.463 In: *European Environment*, vol: 17, p. 347-362 (2007). Wiley InterScience ISSN: DOI:10.1002/eet.463

Jensen, Ole Mejlhede; Geiker, Mette Rica; Stang, Henrik
Advanced cement-based materials - Research and Teaching In: *Materials and Structures*, vol: 40 (4) (2007). Springer ISSN: 1359-559

Jensen, Ole Mejlhede; Geiker, Mette Rica; Stang, Henrik
Editorial In: *Materials and Structures*, vol: 40 (4), p. 355-356 (2007). Springer ISSN: 1359-559

Asferg, Jesper L.; Poulsen, Peter Noe; Nielsen, Leif Otto
A direct XFEM formulation for modeling of cohesive crack growth in concrete In: *Computers and Concrete*, vol: 4 (2), p. 83-100 (2007). Techno Press ISSN: 1598-8198

Asferg, Jesper L.; Poulsen, Peter Noe; Nielsen, Leif Otto
A consistent partly cracked XFEM element for cohesive crack growth DOI : 10.1002/nme.2023 In: *International Journal for Numerical Methods in Engineering*, vol: 72, p. 464-485 (2007). Wiley ISSN: 0029-5981

Stang, Henrik; Olesen, John Forbes; Poulsen, Peter Noe; Dick-Nielsen, Lars
On the application of cohesive crack modeling in cementitious materials DOI : 10.1617/s11527-006-9179-8 In: *Materials and Structures*, vol: 40, p. 365-374 (2007).

Karihaloo, Bhushan L.; Stang, Henrik
Buckling-driven delamination growth in composite laminates: Guidelines for assessing the threat posed by interlaminar matrix delamination DOI : 10.1016/j.compositesb.2007.01.008 In: *Composites Part B: Engineering* (2007).

Blanusa, Petar; Goss, William P.; Roth, Hartwig; Weitzmann, Peter; Jensen, Claus Franco; Svendsen, Svend; Elmahdy, Hakim
Comparison between ASHRAE and ISO thermal transmittance calculation methods DOI : 10.1016/j.enbuild.2006.09.007 In: *Energy and Buildings*, vol: 39 (3), p. 374-384 (2007). Elsevier ISSN: 0378-7788



Hansen, Anders Viggo; Agerskov, Henning; Bjørnbak-Hansen, Jørgen
Improvement of Fatigue Life of Welded Structural Components by Grinding In: *Welding in the World, Journal of the International Institute of Welding*, vol: 51 (3/4), p. 61-67 (2007). International Institute of Welding

Mortensen, Lone Hedegaard; Woloszyn, Monika; Rode, Carsten; Peuhkuri, Ruut Hannele
Investigation of Microclimate by CFD Modeling of Moisture Interactions between Air and Constructions DOI : 10.1177/1744259106075233 In: *Journal of Building Physics*, vol: 30 (4), p. 279-315 (2007). Sage publications ISSN: 1744-2591

Thygesen, Lisbeth Garbrecht; Hansen, Kurt Kielsgaard
Improved suction technique for the characterization of construction materials DOI : 10.1520/JAI100335 In: *Journal of ASTM International*, vol: 4 (1), p. 9 pages (2007). ISSN: 1546-962X

Engelmark, Jesper; Dahl, Torben; Melgaard, Ebbe
State of the Art: Denmark In: *Research in Architectural Engineering Series : Cost C16: Improving the quality of existing urban building envelopes (2)*, p. 45-56 (2007). TU Delft ISSN: 1873-6033

Melgaard, Ebbe; Dahl, Torben; Engelmark, Jesper
General overview of the problems, needs and solutions in the Danish urban building envelopes In: *Research in Architectural Engineering Series : Cost C16: Improving the quality of existing urban building envelopes (3)*, p. 27-37 (2007). TU Delft ISSN: 1873-6033

Engelmark, Jesper; Dahl, Torben; Melgaard, Ebbe
Adding an extra storey In: *Research in Architectural Engineering Series : Cost C16: Improving the quality of existing urban building envelopes (4)*, p. 111-117 (2007). TU Delft ISSN: 1873-6033

Engelmark, Jesper; Dahl, Torben; Melgaard, Ebbe
New facade combined with inside rebuilding In: *Research in Architectural Engineering Series : Cost C16: Improving the quality of existing urban building envelopes (4)*, p. 119-124 (2007). TU Delft ISSN: 1873-6033

Dahl, Torben; Melgaard, Ebbe; Engelmark, Jesper
Technical improvements of housing envelopes in Denmark In: *Research in Architectural Engineering Series : Cost C16: Improving the quality of existing building envelopes (5)*, p. 21-30 (2007). TU Delft ISSN: 1873-6033

Emmitt, Stephen
Aspects of building design management In: *Architectural Engineering and Design Management*, vol: 3 (1), p. 1-75 (2007). Earthscan ISSN: 1745-2007

Emmitt, Stephen

Construction partnering and integrated teamworking : Book review In: Architectural Engineering and Design Management, vol: 3 (1), p. 73-74 (2007).Earthscan ISSN: 1745-2007

Emmitt, Stephen

Value and risk management, a guide to best practice : Book review In: Architectural Engineering and Design Management, vol: 3 (1), p. 74-75 (2007).Earthscan ISSN: 1745-2007

Gudmundsson,Gudmundur Valur; Ingólfsson, Einar Thór; Einarsson,Baldvin; Bessason,Bjarni

Experimental and analytical studies on pedestrian induced footbridge vibrations In: Proceedings of the Icelandic association of chartered engineers : Yearbook VFI/TFI (2007).Icelandic association of chartered engineers ISSN: 1027-7394

Ferraris,Chiara F; Geiker, Mette Rica; Martys,Nicos S.; Muzzatt,Nicholas

Parallel-plate rheometer calibration using oil and lattice Boltzmann simulation In: Journal of Advanced Concrete Technology, vol: 5 (3), p. 363-371 (2007).Japan Concrete Institute

Riisgaard, Benjamin; Gupta,Anant; Mendis,Priyan; Ngo,Tuan

Enhancing the performance under close-in with polymer reinforced CRC In: Electronic Journal of Structural Engineering, vol: 6, p. 75-79 (2006).

Bechberger,Mischa; Meyer, Niels I; Metz,Lutz; Sohre,Annika

Die Entwicklung der Windenergie in Dänemark, Spanien und Grossbritannien im Vergleich In: Zeitschrift für Energiewirtschaft, vol: 31 (3), p. 201-208 (2007).

Dick-Nielsen, Lars; Stang, Henrik; Poulsen, Peter Noe

Micro-mechanical Analysis of Fiber Reinforced Cementitious Composites In: Journal of Advanced Concrete Technology, vol: 5 (3), p. 373-382 (2007).Japan Concrete Institute

Jensen, Jens Stissing

Governing Science, Technology and Innovation: In: Int. J. Services, Economics and Management., vol: 1 (1), p. 24-35 (2007).Inderscience Enterprises Ltd.

Ottosen, Lisbeth M.; Pedersen, Anne Juul; Rörig-Dalgaard, Inge

Salt-related problems in brick masonry and electrokientic removal of salts In: Journal of Building Appraisal, vol: 3 (3), p. 181-194 (2007).Palgrave Macmillan Ltd

Ai,Ning; Fan, Jianhua; Ji,Jianbing

An overview of CFD and PIV application in investigation of solar thermal systems In: Chemical industry and Engineering progress, vol: 26 (4), p. 515-521 (2007).Chemical Industry Publisher, China ISSN: 1000-6613

**Books****Emmitt, Stephen; Gorse,Christopher**

Communication in Construction Teams. - Abingdon, Oxon, UK : Spon Research, Taylor & Francis, 2007 (p. 298) ISBN : 0-415-36619-4

Emmitt, Stephen

Design Management for Architects. - 1sted. - Oxford, UK : Blackwell Publishing, 2007 (p. 332) ISBN : 978-1-4051-3147-6

Furbo, Simon; Thür, Alexander; Bales,Chris; Fiedler,Frank; Rekstad,John; Meir,Michaela; Blumberga,Dagnija; Rochas,Claudio

Solar thermal components adapted to common building standards (SCAS) - Nordic Innovation Centre, 2007

Bjerregaard Jensen, Lotte

Futures of civil engineering. - Copenhagen : Technical University of Denmark, 2008 ISBN : 9788778772510

Pedersen, Elsebet Frydendal

Udenlandsk arbejdskraft: Et resultat af højkonjunkturen? Eller kommet for at blive?. - 1ed. - DTU, 2007 (p. 113) : 9788778772558

Kovler,Konstantin; Jensen, Ole Mejlhede

Internal curing of concrete. - Bagneux, Paris, France : RILEM publications SARRL, 2007 (p. I-141) ISBN : 978-2-35158-009-7

Book chapters**Krogsbøll, Anette Susanne; Hansen, Bent**

Stabilitet In: Lærebog i Geoteknik, p. 197-220 ; Fuglsang, Leif D ; Bagge, Gunnar - 1ed. - Lyngby : Polyteknisk Forlag, 2007 ISBN: 87-502-0961-2

Krogsbøll, Anette Susanne; Hansen, Bent

Brud i jordmasser In: Lærebog i Geoteknik, p. 185-196 ; Fuglsang, Leif D ; Bagge, Gunnar - 1ed. - Lyngby : Polyteknisk Forlag, 2007 ISBN: 87-502-0961-2

Krogsbøll, Anette Susanne; Hansen, Bent

Jordtryk In: Lærebog i geoteknik, p. 273-292 ; Fuglsang, Leif D ; Bagge, Gunnar - 1ed. - Lyngby : Polyteknisk Forlag, 2007 ISBN: 87-502-0961-2

Elle, Morten

Waste Sorting in Copenhagen In: Towards Sustainable Urban Infrastructure : Assessment, Tools and Good Practice, p. 205-207-Helsinki : ESF and COST, 2006 ISBN: 978-92-898-0035-8

Elle, Morten

Waste Sorting in Copenhagen In: Towards Sustainable Urban Infrastructure : Assessment, Tools and Good Practice, p. 205-207-Helsinki : ESF and COST, 2006 ISBN: 978-92-898-0035-8

Elle, Morten

Middelgrunden Windfarm, Copenhagen In: Towards Sustainable Urban Infrastructure : Assessment, Tools and Good Practice, p. 175-177-Helsinki : ESF and COST, 2006 ISBN: 978-92-898-0035-8

Nielsen, Jens Henrik; Olesen, John Forbes

The Use and Properties of Toughened Glass In: The Future of Civilengineering, 2008 ISBN: 97-88-77877251-0

Tommerup, Henrik M.; Svendsen, Svend

Energy Efficiency Policy In: Risø Energy Report : Future options for energy technologies, p. 13-20 / Editor: Sønderberg Petersen, Leif ; Larsen, Hans Hvidtfeldt ISBN: 978-87-550-3611-6

Pedersen, Elsebet Frydendal; Jensen, Per Anker

User involvement and role of briefing In: Perspectives on Architectural Management: A book by CIB W096 Architectural Management Blackwell Publishing, Oxford, 2008

Meyer, Niels I

Development of Danish Wind Power Market In: Green Power Markets: Support Schemes, Case Studies and Perspectives, p. 251-268-Essex, UK : Multi-Science Publishing Co. Ltd., 2007 ISBN: 0906522 595

Vestergaard, Flemming

DBK Dansk Byggeklassifikation 2006: En introduktion til konceptet bag DBK In: Implementeringsnetværket/linket artikel-http://detdigitalebyggeri.dk/content/view/308/662/: Dansk Byggeri, 2006

Kovler, Konstantin; Jensen, Ole Mejlhede

Introduction In: Internal curing of concrete, p. 1-3-Bagneux : Rilem Publications, SARL, 2007 ISBN: 978-2-35158-009-7

Kovler, Konstantin; Jensen, Ole Mejlhede

General concept and terminology In: Internal curing of concrete, p. 5-13-Bagneux : Rilem Publications, SARL, 2007 ISBN: 978-2-35158-009-7

Kovler, Konstantin; Jensen, Ole Mejlhede

Conclusions and outlook In: Internal curing of concrete, p. 137-140-Bagneux : Rilem Publications, SARL, 2007 ISBN: 978-2-35158-009-7

Jensen, Ole Mejlhede

Mechanisms of internal water curing In: Internal curing of concrete, p. 15-27-Bagneux : Rilem Publications, SARL, 2007 ISBN: 978-2-35158-009-7

Jensen, Ole Mejlhede; Lura, Pietro

Materials and methods for internal curing In: Internal curing of concrete, p. 45-55-Bagneux : Rilem Publications, SARL, 2007 ISBN: 978-2-35158-009-7

Lura, Pietro; Jensen, Ole Mejlhede; Igarashi, Shin-Ishi

Experimental methods to study internal curing In: Internal curing of concrete, p. 57-69-Bagneux : Rilem Publications, SARL, 2007 ISBN: 978-2-35158-009-7

Jensen, Ole Mejlhede

Strukturdannelse In: Materialebogen - 1ed. - København : Nyt Teknisk Forlag, 2007 ISBN: 978-87-571-2411-8

Christensen, Toke Haunstrup; Godskesen, Mirjam Irene; Røpke, Inge; Gram-Hanssen, Kirsten; Quitzau, Maj-Britt

På vej mod et bæredygtigt forbrug? Dansk politik inden for forbrug og miljø In: Økologisk modernisering på dansk, p. 259-290-København : Frydenlund, 2007

Conference papers - Peer Reviewed

Rode, Carsten; Peuhkuri, Ruut; Time, Berit; Svennberg, Kaisa; Ojanen, Tuomo

Moisture Buffer Value of Building Materials. Presented at: ASTM Symposium on Heat-Air-Moisture Transport: Measurements on Building Materials. Toronto, 2006 In: Journal of ASTM International, vol: 4 (5), p. 12 (2007). ASTM International ISSN: 1546-962X

Lura, Pietro; Weiss, Jason; Jensen, Ole Mejlhede

Detection and analysis of microcracks in high-performance cementitious materials. Presented at: Advances in Construction Materials. Stuttgart, Germany, 2007 In: Advances in Construction Materials : Symposium on honor of Hans W Reinhardt, p. 605-614-Stuttgart, Germany : Springer, 2007

Nielsen, Jens Henrik

Modeling of Residual Stresses In Toughened Glass. Presented at: 6th Int. PhD Symposium in Civil Engineering. ETH Zürich, 2006 In: Proceedings: 6th International PhD symposium in Civil Engineering-ETH Zürich : IBK Publikation, 2006

Andersen, Elsa; Fan, Jianhua; Furbo, Simon

Heat losses through pipe connections in hot water stores. Presented at: ISES Solar World Congress 2007. 18-21 September 2007, Beijing, China, 2007 In: Proceedings of ISES 2007 : Solar Energy and Human Settlement; Volume IV, p. 1998-2002-Beijing, China : Springer, 2007 ISBN: 978-7-302-16146-2

Jensen, Per Anker

General Managers' and building managers' different evaluation of building value and quality - as built and over time. Presented at: CIB2007 World Building Congress. Cape Town, South Africa, 2007 In: CIB2007 World Building Congress : Construction for development; Full Proceedings CD, p. 977-988 - Part 2ed. - Cape Town, South Africa : CIB, 2007 ISBN: 1-920-01704-6

Jensen, Per Anker

The Organisational Relationships between Support Functions and Core Business Presented at: EFMC2007 Conference and Research Symposium. Zürich, 2007 In: EFMC2007 Conference and Research Symposium : 6th EuroFM Research Symposium; Conference Papers, p. 47-54-Zürich : Euroforum, 2007

Ingólfsson, Einar Thór; Georgakis, Christos; Jönsson, Jeppe; Ricciardelli, Francesco

Vertical footbridge vibrations: Towards an improved and codifiable response evaluation. Presented at: The third international conference on structural engineering, mechanics and computation. Cape Town, South Africa, 2007 In: Proceedings of the Third International Conference on Structural Engineering, Mechanics and Computation-Rotterdam, Netherlands : Millpress, 2007

Almegaard, Henrik; Bagger, Anne; Gravesen, Jens; Jüttler, Bert; Šír, Zbyněk

Surfaces with Piecewise Linear Support Functions over Spherical Triangulations Presented at: Mathematics of Surfaces. Sheffield, England, 2007 In: Mathematics of Surfaces XII, p. 42-63 ; Sabin, Malcolm ; Winkler, Joab Springer-Verlag, 2007 ISBN: 978-3-540-73842-8

Bjerregaard Jensen, Lotte

Recent developments in Structural Engineering, Mechanics and Computation : Blobs and ideal spatial Structures-The context of ideal spatial structures. Presented at: Recent developments in Structural Engineering, Mechanics and Computation. South Africa, 2007 In: Recent developments in Structural Engineering, Mechanics and Computation: Blobs and ideal spatial Structures - The context of ideal spatial structures, p. 289-291 / Author: Bjerregaard Jensen, Lotte-Rotterdam : Mill Press, 2007 ISBN: 978 90 5966 054 0

Pinson, Pierre; Christensen, Lasse E.A.; Madsen, Henrik; Sørensen, Poul E.; Donovan, Martin Heyman; Jensen, Leo E.

Fluctuations of offshore wind generation: Statistical modelling. Presented at: EWEC 2007, 'European Wind Energy Conference', Scientific Track, Milan, Italy, 2007 In: EWEC 2007, 'European Wind Energy Conference', Scientific Track, Milan, Italy (2007), 2007, 2007

Emmitt, Stephen; den Otter, Ad

Managing design with the effective use of communication media. Presented at: Construction for Development. Cape Town, South Africa, 2007 In: Construction for Development : CIB World Building Congress, p. 1072-1079-South Africa : CIB, 2007 ISBN: 1-920-01704-6

Jørgensen, Bo; Emmitt, Stephen

Integrating design and construction from a lean perspective. Presented at: Construction for Development. Cape Town, South Africa, 2007 In: Construction for Development : CIB World Building Congress, p. 1080-1092-South Africa : CIB, 2007 ISBN: 1-920-01704-6

Fan, Jianhua; Dragsted, Janne; Furbo, Simon

Side-by-side tests of differently designed evacuated tubular collectors. Presented at: Solar World Congress 2007. Beijing, P.R. China, 2007 In: Proceedings of ISES Solar World Congress 2007 : Solar Energy and Human Settlement; II, p. 634-639-Beijing : Tsinghua University Press, Springer, 2007 ISBN: 978-7-302-16146-2

Fan, Jianhua; Dragsted, Janne; Furbo, Simon

Validation of simulation models for differently designed heat-pipe evacuated tubular collectors. Presented at: Solar World Congress 2007. Beijing, P.R. China, 2007 In: Proceedings of ISES Solar World Congress 2007 : Solar Energy and Human Settlement; II, p. 663-668-Beijing : Tsinghua University Press, Springer, 2007 ISBN: 978-7-302-16146-2



Furbo, Simon; Fan, Jianhua

Experimental investigations on small low flow SDHW systems based on mantle tanks. Presented at: ISES Solar World Congress 2007. Beijing, China, 2007 In: ISES Solar World Congress 2007 Proceedings, 2007

Furbo, Simon; Schultz, Jørgen Munthe; Thür, Alexander

Energy savings for a solar heating system in practice. Presented at: ISES Solar World Congress 2007 Congress. Beijing, China, 2007 In: ISES Solar World Congress 2007 Proceedings, 2007

Dragsted, Janne; Furbo, Simon; Andersen, Elsa; Karlsson, Björn

Measured reflection from snow. Presented at: ISES Solar World 2007 Congress. Beijing, China, 2007 In: ISES Solar World 2007 Congress

Yazdanshenas, Eshagh; Furbo, Simon

Solar combi system based on a mantle tank. Presented at: ISES Solar World Congress 2007. Beijing, China, 2007 In: Proceedings of ISES Solar World Congress 2007

Schultz, Jørgen Munthe; Furbo, Simon

Solar heating systems with heat of fusion storage with 100% solar fraction for solar low energy buildings. Presented at: ISES Solar World Congress 2007, 2007 In: ISES Solar World Congress 2007 Proceedings

Røpke, Inge; Gram-Hanssen, Kirsten; Jensen, Jesper Ole

Households' ICT use in an energy perspective. Presented at: The Good, the Bad and the Unexpected. The user and the future of information and communication technologies, 2007 In: The Good, the Bad and the Unexpected. The user and the future of information and communication technologies-Moscow : COST 298, 2007

Hviid, Christian Anker; Svendsen, Svend

A method for evaluating the problem complex of choosing the ventilation system for a new building. Presented at: A method for evaluating the problem complex of choosing the ventilation system for a new building. Helsinki, 2007 In: Clima 2007 Wellbeing Indoors : Proceedings CD-Helsinki : FINVAC, 2007 ISBN: 978-952-99898-2-9

Nielsen, Jens Henrik; Olesen, John Forbes; Stang, Henrik; Poulsen, Peter Noe

An implementation of 3D viscoelastic behavior for glass during toughening. Presented at: Glass Performance Days 2007. Tampere, Finland, 2007 In: Glass Performance Days 2007, p. 693-697 - 1ed. - Tampere, Finland : Glass Performance Days, 2007 ISBN: 952-91-8674-6

Nielsen, Jens Henrik; Olesen, John Forbes

Mechanically reinforced glass beams. Presented at: The third international conference on structural engineering, mechanics and computation, 2007 In: Recent Developments in Structural Engineering Mechanics and Computation, p. 655-657-Rotterdam, Capetown : Millpress, 2007 ISBN: 978-90-5966-054-0

Dick-Nielsen, Lars; Stang, Henrik; Poulsen, Peter Noe; Kabele, Petr

A Plastic Damage Mechanics Model for Engineered Cementitious Composites. Presented at: 6th International Conference on Fracture Mechanics of Concrete and Concrete Structures. Catania, Italy, 2007 In: High-Performance Concrete, Brick-Masonry and Environmental Aspects;3, p. 1449-1456 - 1ed. - London : Taylor & Francis Group, 2007 ISBN: 978-0-415-44617-4

Mougaard, Jens Falkenskov; Poulsen, Peter Noe; Nielsen, Leif Otto

An Enhanced Cohesive Crack Element for XFEM using a Double Enriched Displacement Field. Presented at: Fracture Mechanics of Concrete and Concrete Structures. Catania, Italy, 2007 In: New Trends in Fracture Mechanics of Concrete;1, p. 139-146, 2007

Østergaard, Lennart; Olesen, John Forbes; Poulsen, Peter Noe

Biaxial Testing Machine for Mixed Mode Cracking of Concrete. Presented at: Conference on Fracture Mechanics of Concrete and Concrete Structures. Catania, Italy, 2007 In: Fracture Mechanics of Concrete and Concrete Structures : New Trends in Fracture Mechanics of Concrete;1, p. 263-270-The Netherlands : Taylor & Francis/Balkema, 2007 ISBN: 978-0-415-44065-3

Almegaard, Henrik

The curvature coordinate system. Presented at: IASS Symposium 2007. University IUAV of Venice, Italy, 2007 In: IASS 2007 Venice Italy : Shell and Spatial Structures: Structural Architecture - Towards the future looking o the past

Astrup, Thomas; Kristensen, Kasper; Olesen, John Forbes; Svensson, Staffan

Experimental verification of strain field in CT-Specimens during crack propagation. Presented at: 3rd International Symposium on Wood Machining. Lausanne, Switzerland, 2007 In: Proceedings of the 3rd International Symposium on Wood Machining, 2007

Astrup, Thomas; Kristensen, Kasper; Olesen, John Forbes; Svensson, Staffan

Inverse analysis of cohesive fracture in CT-tests. Presented at: 3rd International Symposium on Wood Machining. Lausanne, Switzerland, 2007 In: Proceedings of the 3rd International Symposium on Wood Machining, 2007

Jönsson, Jeppe

Rigid-plastic stability analysis of slender quadratic plates. Presented at: Third International Conference on Structural Engineering, Mechanics and Computation, 2007 In: Recent Developments in Structural Engineering, Mechanics and Computation; Shells and Plates, p. 313-Rotterdam, The Netherlands : Millpress Science Publishers, 2007 ISBN: 978-90-5966-054-0

Hansen, Jan Langkjær; Hansen, Anders Viggo; Agerskov, Henning; Bjørnbak-Hansen, Jørgen

Residual Stresses from Welding, Prediction by FEA and Verification by Measurements and Fatigue Tests. Presented at: International Symposium on Integrated Design and Manufacturing of Welded Structures. Eskilstuna, Sweden, 2007 In: Proc. of the International Symposium on Integrated Design and Manufacturing of Welded Structures, p. 163-182-Eskilstuna : Lappeenranta Univ. of Technology, 2007 ISBN: 978-952-214-363-1

Hansen, Anders Viggo; Agerskov, Henning; Bjørnbak-Hansen, Jørgen

Improvement of Fatigue Life of Welded Structural Components by Grinding. Presented at: International Symposium on Integrated Design and Manufacturing of Welded Structures. Eskilstuna, Sweden, 2007 In: Proc. of the International Symposium on Integrated Design and Manufacturing of Welded Structures, p. 25-34-Eskilstuna, Sweden : Lappeenranta Univ. of Technology, 2007 ISBN: 978-952-214-363-1

Samuelsson, Jack; Haagenen, Per; Agerskov, Henning; Marquis, Gary

Work in Progress on Fatigue of Welded Structures in the Nordic Countries. Presented at: International Institute of Welding Annual Assembly. Dubrovnik, Croatia, 2007 In: IIW Doc. XIII-2168-07, p. 1-8-Dubrovnik, Croatia : International Institute of Welding, 2007

Hansen, Jan Langkjær; Hansen, Anders Viggo; Agerskov, Henning; Bjørnbak-Hansen, Jørgen

Residual Stresses from Welding, Prediction by FEA and Verification by Measurements and Fatigue Tests. Presented at: International Institute of Welding Annual Assembly. Dubrovnik, Croatia, 2007 In: IIW Doc. XIII-2172-07, p. 1-18-Dubrovnik, Croatia : International Institute of Welding, 2007

Tommerup, Henrik M.; Nørgaard, Jørgen

Proper Sizing of Circulation Pumps. Presented at: ECEEE 2007 Summer Study Proceedings. La Colle sur Loup, France, 2007 In: ECEEE 2007 Summer Study Proceedings : Saving energy - just do it!; Volume 3, p. 1353-1357

Tommerup, Henrik M.; Svendsen, Svend

Energy Renovation of a Typical Danish Single-family House. Presented at: 11th International Conference on Passive Houses 2007. Bregenz on Lake of Constance, Austria, 2007 In: 11th International Conference on Passive Houses 2007, p. 197-202

Yamada, Kazuo; Hosokawa, Yoshifumi; Johannesson, Björn; Nilsson, Lars-Olof

A Model for Combined Chemical and Multi-ionic Diffusion in Concrete. Presented at: JCI - conference, Tokyo. Tokyo, 2006 In: Japan Concrete Institute Proceedings; Vol. 29, No.1, p. 957-962

Thrane, Lars Nyholm; Stang, Henrik; Geiker, Mette Rica

Flow Induced segregation in full scale castings with SCC. Presented at: 5th International Symposium on Self-Compacting Concrete. Ghent, Belgium, 2007 In: Self-Compacting Concrete SCC 2007 : Proceedings of the Fifth International RILEM Symposium;1, p. 449-454 - 1ed. - France : RILEM Publication S.A.R.L., 2007 ISBN: 978-2-35158-050-9

Geiker, Mette Rica; Ekstrand, John Peter; Hansen, Rune

Effect of mixing on properties of SCC. Presented at: 5th International Symposium on Self-Compacting Concrete. Ghent, Belgium, 2007 In: Self-Compacting Concrete SCC 2007 : Proceedings of the Fifth International RILEM Symposium; 1, p. 231-238 - 1ed. - France : RILEM Publishing S.A.R.L., 2007 ISBN: 978-2-35158-050-9

Ferraris, Chiara F; Geiker, Mette Rica; Martys, Nicos S; Muzzatti, Nicholas

Calibration of modified parallel-plate rheometer through calibrated oil and lattice Boltzmann simulation. Presented at: 5th International Symposium on Self-Compacting Concrete. Ghent, Belgium, 2007 In: Self-Compacting Concrete SCC 2007 : Proceedings of the Fifth International Symposium; 1, p. 297-302 - 1ed. - France : RILEM Publications S.A.R.L., 2007 ISBN: 978-2-35158-050-9

Pease, Bradley Justin; Skocek, Jan; Geiker, Mette Rica; Stang, Henrik

The wedge splitting test: influence of aggregate size and water-to-cement ratio. Presented at: Workshop: transport mechanisms in cracked concrete. Ghent, Belgium, 2007 In: Transport mechanisms in cracked concrete, p. 111-122 - 1ed. - Loeven : Acco, 2007 ISBN: 978-90-334-6637-3

Jørgensen, Anders Stuhr; Doré, Guy

Use of reflective surfaces on roadway embankment. Presented at: International Symposium on Cold Region Development. Tampere, Finland, 2007 In: Proceeding of the 8th International Symposium on Cold Region Development, p. 67-68, 2007 ISBN: 978-951-758-482-1

Ricciardelli, Francesco; Briatico, C; Ingólfsson, Einar Thór; Georgakis, Christos

Experimental validation and calibration of pedestrian loading models for footbridges. Presented at: Experimental validation and calibration of pedestrian loading models for footbridges. Porto, Portugal, 2007 In: Experimental Vibration Analysis for Civil Engineering Structures, p. 189-199 ; Caetano, Elsa, 2006



Foged, Niels Nielsen; Jakobsen, Lisa; Jackson, Peter; Erichsen, Lars

Rock mass characterization for tunnels in the Copenhagen limestone. Presented at: 11th Congress of the International Society for Rock Mechanics, 2007 In: 11th Congress of the International Society for Rock Mechanics; 2, p. 1025-1030 Taylor & Francis Group, 2007 ISBN: 978-0-415-45084-3

Ferreira, P.; Sousa, T.; Silva, P.; Vasconcelos, H.; Foged, Niels Nielsen; Ribeiro e Sousa, L.

Numerical modeling and monitoring analysis of Heroísmo station, Metro do Porto. Presented at: 11th Congress of the International Society for Rock Mechanics, 2007 In: 11th Congress of the International Society for Rock Mechanics; 2, p. 967-970, 207 ISBN: 978-0-415-45084-3

Riisgaard, Benjamin

Finite element analysis of Polymer reinforced CRC columns under close-in

detonation. Presented at: 6th European LS-DYNA Users' Conference. Sweden, 2007 In: 6th European LS-DYNA Users' Conference, 2007

Riisgaard, Benjamin; Ngo, Tuan; Mendis, Priyan; Georgakis, Christos; Stang, Henrik

Dynamic Increase Factors for High Performance Concrete in Compression using Split Hopkinson Pressure Bar. Presented at: Fracture Mechanics of Concrete and Concrete Structures. Italy, 2007 In: Fracture Mechanics of Concrete and Concrete Structures, 2007

Gjelstrup, Henrik; Georgakis, Christos; Larsen, Allan

A Preliminary Investigation of the Hanger Vibrations on the Great Belt East Bridge. Presented at: Seventh International Symposium on Cable Dynamics. Vienna (Austria), 2007 In: Seventh International Symposium on Cable Dynamics, 2007

Derluyn, Hannelore; Janssen, Hans; Diepens, Jan; Derome, Dominique; Carmeliet, Jan

Can books and textiles help in controlling the indoor relative humidity? Presented at: 10th International Conference on Thermal Performance of the Exterior Envelopes of Whole Buildings, 2007 In: Proceedings of the 10th International Conference on Thermal Performance of the Exterior Envelopes of Whole Buildings, 2007

Bjerregaard Jensen, Lotte

CDIO projects at BYG DTU Architectural Engineering : Two traditions and one evolving. Presented at: Reflektori 2007. Helsinki, 2007 In: REFLEKTORI 2007, p. 192-195-Helsinki : Helsinki University of Technology, 2007 ISBN: 978-951-22-9063-5

Täljsten, Björn

Near Surface Mounted Reinforcement to strengthen concrete structures - Experience and use. Presented at: Int. Conf. Advanced Composites in Construction., Bath, 2007 In: Int. Conf. Advanced Composites in Construction-Bath : University of Bath, 2007

Täljsten, Björn; Carolin, C.

Beam Strengthened in shear by EBR - design model. Presented at: FRPRCS-8, 2007 In: FRPRCS-8; CD-Proceedings, p. 226-227, 2007 ISBN: 978-960-89691-0-0

Lundqvist, J.; Bernspång, L.; Täljsten, Björn; Olofsson, T.

A probability study of finite element analyses of near surface mounted carbon fibre reinforced polymer bonded to reinforce concrete. Presented at: FRPRCS-8, 2007 In: FRPRCS-8 : 8th International symposium on fibre reinforcement for concrete structures; CD-Proceedings, p. 338-339 ISBN: 978-960-89691-0-0

Hejll, A.; Täljsten, Björn; Maxstadh, P.

Civil health monitoring of a CFRP strengthened concrete bridge in Sweden. Presented at: FRPRCS-8, 2007 In: FRPRCS-8 : 8th International symposium on fibre reinforcement for concrete structures; CD-proceedings, p. 580-581, 2007

Orosz, Katalin; Täljsten, Björn; Fischer, Gregor

CFRP strengthening with Mineral Based Composites loaded in shear. Presented at: FRPRCS-8, 2007 In: FRPRCS-8 : 8th International symposium on fibre reinforcement for concrete structures; CD-proceedings, p. 642-643, 2007

Täljsten, Björn; Hejll, A.

Strengthening and civil structural health monitoring of the Panken road bridge in Sweden. Presented at: SEMC 2007. Cape Town, 2007 In: SEMC 2007 : The Third International Conference on Structural Engineering, Mechanics and Computation-Cape Town, 2007

Olofsson, J.; Elfgrén, L.; Bell, B.; Paulsson, P.; Niederleithinger, E.; Jensen, J.; Feltrin, G.; Täljsten, Björn; Cremona, C.; Kivilumoa, R.; Bien, J

Sustainable Bridges - A European Integrated Research Project, Background and overview. Presented at: Int. Conf. in Wroclaw. Wroclaw, 2007 In: Int. Conf. in Wroclaw-Wroclaw, 2007 ISBN: 978-83-7125-161-0

Täljsten, Björn; Carolin, A.; Helmerich, R.

Rehabilitation of railway bridges. Presented at: Int. Conf. in Wroclaw. Wroclaw, 2007 In: Int. Conf. in Wroclaw-Wroclaw, 2007 ISBN: 978-83-7125-161-0

Carolin, A.; Täljsten, Björn; Pedersen, H.

Repair and strengthening of railway bridges - guideline. Presented at: Int. Conf. in Wroclaw. Wroclaw, 2007 In: Int. Conf. in Wroclaw, p. 313-320-Wroclaw, 2007 ISBN: 978-83-7125-161-0

Täljsten, Björn; Blanksvärd, T.; Carolin, A.

Mineral Based bonding of CFRP to strengthen concrete structures. Presented at: Int. Conf. in Wroclaw. Wroclaw, 2007 In: Int. Conf. in Wroclaw, p. 331-339-Wroclaw, 2007 ISBN: 978-83-7125-161-0

Täljsten, Björn; Carolin, C.

Near Surface Mounted Reinforcement (NSMR) to strengthen concrete structures. Presented at: Int. Conf. in Wroclaw. Wroclaw, 2007 In: Int. Conf. in Wroclaw, p. 341-354-Wroclaw, 2007

Täljsten, Björn; Bergström, M.; Enochsson, O.; Elfgrén, L.

CFRP strengthening of the Örnköldsviks bridge - field test. Presented at: Int. Conf. in Wroclaw. Wroclaw, 2007 In: Int. Conf. in Wroclaw, p. 355-364-Wroclaw, 2007 ISBN: 978-83-7125-161-0

Täljsten, Björn; Sand, B.; Rusinowski, Piotr Michal

Shear and Peeling stresses at the end of concrete beams strengthened with CFRP plates. Presented at: SEMC 2007. Cape Town, 2007 In: SEMC 2007 : The Third International Conference on Structural Engineering, Mechanics and Computation-Cape Town, 2007

Täljsten, Björn; Elfgrén, L.; Enochsson, O.

Use of SHM in destructive testing of bridges. Presented at: Int. Conf. SHMII-3. Vancouver, 2007 In: SHMII-3; CD-Proceedings, p. 5-Vancouver, 2007 ISBN: 978-0-9736430-4-6

Täljsten, Björn; Hejll, A.

Use of SHM for investigating the performance for a CFRP strengthened concrete bridge. Presented at: Int. Conf. SHMII-3. Vancouver, 2007 In: SHMII-3; CD-Proceedings, p. 177-Vancouver, 2007

Täljsten, Björn; Orosz, Katalin; Fischer, Gregor

Crack development in CFRP reinforced mortar - an experimental study. Presented at: Asia Pacific Conference on FRP in Structures. Hong Kong, 2007 In: APFIS 2007-Hong Kong, 2007

Täljsten, Björn

Construction of the ASSET Polymer Composite Bridge. Presented at: Asia Pacific Conference on FRP in Structures. Hong Kong, 2007 In: APFIS 2007-Hong Kong, 2007

Hansen, C. S.; Schmidt, J. W.; Täljsten, Björn

Strengthening of old metallic structures with CFRP. Presented at: Asia Pacific Conference on FRP in Structures. Hong Kong, 2007 In: APFIS 2007-Hong Kong, 2007

Rusinowski, Piotr Michal; Täljsten, Björn

Interlaminar Peeling in concrete beams strengthened with CFRP plates - experimental study. Presented at: Asia Pacific Conference on FRP in Structures. Hong Kong, 2007 In: APFIS 2007-Hong Kong, 2007

Gjelstrup, Henrik; Larsen, Allan; Georgakis, Christos; Koss, Holger

A new general 3DOF quasi-steady aerodynamic instability model. Presented at: 6th International Colloquium on Bluff Bodies Aerodynamics and Applications, 2008 In: 6th International Colloquium on Bluff Bodies Aerodynamics and Applications, 2008

Sørensen, Lars Schiøtt

Ignition and flame spread properties of wood, elaborated during a new test method based on convective heat flux. Presented at: Ignition and flame spread properties of wood, elaborated during a new test method based on convective heat flux, 2007 In: Ignition and flame spread properties of wood, elaborated during a new test method based on convective heat flux; Volume 2, p. 1501-1506-Interflam 2007, London : SFPE, BRE, NIST, SP, NFPA, 2007 ISBN: ISBN 978-0-9541216-9-3

Rode, Carsten; Woloszyn, Monika

Whole-Building Hygrothermal Modeling in IEA Annex 41. Presented at: Thermal Performance of the Exterior Envelopes of Whole Buildings. Clearwater Beach, FL, USA, 2007 ISBN : 978-1-933742-28-1 In: Proceedings - Thermal Performance of the Exterior Envelopes of Whole Buildings : Buildings X, p. 1-15-ASHRAE - American Society of Heating, Refrigerating and Air-Conditioning Engineers, 2007 ISBN: 978-1-933742-28-1

Thygesen, Lisbeth Garbrecht; Hansen, Kurt Kielsgaard

Improved Suction Technique for the Characterization of Construction Materials. Presented at: Heat-air-moisture Transport: Measurements on building materials. Toronto, Canada, 2006 paperid : JAI100335 In: Heat-air-moisture Transport: Measurements on building materials, p. 12-20-West Conshohocken, PA, USA : American Society for Testing and Materials, 2007 ISBN: 978-0-8031-3422-5

Andersson, Niclas; Christensen, Knud

Practical implications of location-based scheduling. Presented at: CME25: Construction Management and Economics: past, present and future. Reading University, UK, 2007 In: CME25: Construction Management and Economics: past, present and future Taylor and Francis Group, 2007

Hansen, Christian Skodborg; Schmidt, Jacob Wittrup; Täljsten, Björn

Strengthening of old metallic structures in fatigue with CFRP materials. Presented at: Asia-Pacific Conference on FRP in Structures. Hong Kong, China, 2007 In: Asia-Pacific Conference on FRP in Structures; 2, p. 1033-1038 International Institute for FRP in Construction, 2007 ISBN: 978-962-8014-14-9

Elle, Morten

Sustainable Buildings in Interaction. Presented at: Central Europe Towards Sustainable Building. Czech Technical University in Prague, 2007 In: Central Europe towards Sustainable Building : Proceedings. CESB 07 Prague; Volume 2, p. 474-479-Prague : Czeck Sustainable Building Society, 2007 ISBN: 978-80-903807-8-3

Lura, Pietro; Weiss, Jason; Jensen, Ole Mejlhede

Detection and analysis of microcracks in high-performance cementitious materials. Presented at: Advances in construction materials 2007. Stuttgart, Germany, 2007 In: Advances in construction materials 2007, p. 605-614-Berlin : Springer, 2007 ISBN: 978-3-540-72447-6

Nørgaard, Jørgen; Brange, Birgitte; Guldbrandsen, Tom; Karbo, Peter

Turning the Appliance Market Around towards A++. Presented at: ECEEE 2007 Summer Study. La Colle sur Loup, France, 2007 In: ECEEE Summer Study Proceedings : Saving Energy - Just do it!; Volume 1, p. 155-164 ; Tillerson, Kenya ECEEE Secretariat, Stockholm, Sverige. www.eceee.org, 2007 ISBN: 978-91-633-0899-4

Rørig-Dalgaard, Inge; Ottosen, Lisbeth M.

Preservation of murals on salt loaded masonry vaults by electromigration. Presented at: Structural Studies, Repairs and Maintenance of Heritage Architecture. Prag, The Czech Republic, 2007 In: Structural Studies, Repairs and Maintenance of Heritage Architecture; X, p. 309-318 ISBN: 978-1-84564-085-9

Jensen, Jens Stissing; Koch, Christian

Systemic innovation in construction: THE. Presented at: Association of Researchers in Construction Management, 2007 In: Arcom 23th annual conference; volume 2

Jensen, Jens Stissing; Koch, Christian

Accelerating nano-technological. Presented at: Association of Researchers in Construction Management. Belfast, 2007 In: Arcom 23th annual conference; volume 2

Fischer, Gregor

Fiber Reinforced Concrete for Precast Applications - an Overview on Recent Developments and Applications. Presented at: International Concrete Conference & Exhibition Cape Town, 2007 In: International Concrete Conference & Exhibition Cape Town, 2007

Fischer, Gregor; Stang, Henrik; Dick-Nielsen, Lars

Initiation and development of cracking in ECC materials. Presented at: Fracture Mechanics of Concrete and Concrete Structures (FraMCoS 6), 2007 In: Fracture Mechanics of Concrete and Concrete Structures (FraMCoS 6)

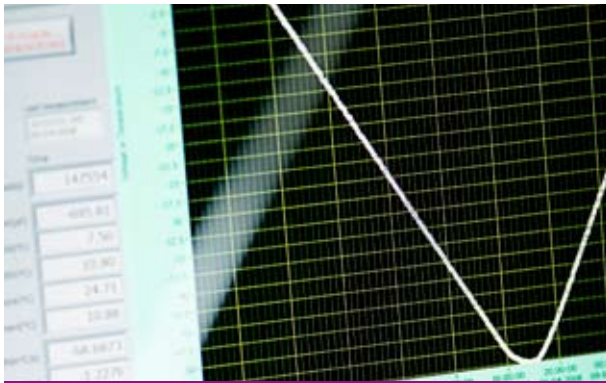
Orosz, Katalin; Täljsten, Björn; Fischer, Gregor

CFRP strengthening with Mineral Based Composites loaded in shear. Presented at: 8th International Symposium on Fibre Reinforcement for Concrete Structures, 2007 In: 8th International Symposium on Fibre Reinforcement for Concrete Structures, 2007

Täljsten, Björn; Orosz, Katalin; Fischer, Gregor

Crack Development in CFRP Reinforced Mortar. Presented at: First Asia-Pacific Conference on FRP in Structures, 2007 In: First Asia-Pacific Conference on FRP in Structures, 2007





Reports

Andersson,Berit; Dederichs, Anne; Blomqvist,Per

Thermal breakdown of fire suppression agents. - 11587 Stockholm, Sweden : Svenska Brandskyddsorganisationen, 2007

Nielsen, Lauge Fuglsang

A Bingham material mixed with stiff particles : Some theoretical aspects ISBN : 9788778772350 In: BYG Rapport;R-161 ISSN: 1601-2917

Ingeman-Nielsen, Thomas; Fritt-Rasmussen, Janne; Brock, Niels; Villumsen, Arne

International Conference, Arctic Roads : Operating, maintaining and building roads in a climatically challenging environment. - Kgs. Lyngby, Denmark : BYG, DTU, 2007 (p. 88) ISBN : 978-877877-230-5 In: BYG Rapport;R-157

Jensen, Per Anker; Nielsen, Kjeld; Nielsen, Susanne Balslev

Facilities Management Best Practice i Norden : 36 cases. - Internal Reported. - Kgs. Lyngby : BYG-DTU, 2007 (p. 350)

Jensen, Per Anker

Space for the Digital Age : Defining, designing and evaluation a new world class media centre. - Kgs. Lyngby : BYG-DTU, 2007 (p. 120) ISBN : 97-8877877-250-3 In: Research Reports;R-175

Jensen, Per Anker

Evaluering af DR Byen efter indflytning : Resultater af en interviewundersøgelse foråret 2007. - Kgs. Lyngby : BYG-DTU, 2007 (p. 30) ISBN : 97-88-77877248-0 In: Research Reports;R-173

Nielsen, Toke Rammer; Rosenfeld, Jean; Duer, Karsten; Svendsen, Svend

IEA SHC TASK 27 Performance of Solar Facade Components. Subtask A: Performance : Project A3: Solar building components and integrated assemblies. - International Energy Agency, 2007 (p. 103-139)

Kerelezova,Irina; Hansen, Thomas; Nielsen, Mogens Peter

Fracture mechanics of non-shear reinforced R/C Beams ISBN : 97-887-7877-226-5 In: BYG Rapport;R-154

Nielsen, Lauge Fuglsang

Moisture sorption in porous materials : A best fit from experimental data ISBN : 97887-7877-236-7 In: BYG Rapport;R-162

Andersson, Niclas; Christensen, Knud

Location based scheduling : Vurdering af LBS-metodens anvendelse i byggeprojekter ISBN : 97887-7877-241-1 In: BYG Rapport;R-167

Riberholt, Hilmer

Performance of glulam structures in Europe ISBN : 97887-7877-252-7 In: BYG Rapport;R-177

Villumsen, Arne; Jørgensen, Anders Stuhr; Abdel, Barten; Fritt-Rasmussen, Janne; Løgstrup,Laust; Brock, Niels; Hoedeman, Niels; Gunnarsdottir, Ragnhildur; Borre, Sara; Ingeman-Nielsen, Thomas

Road construction in Greenland : The Greenlandic case - Roadex, 2007 (p. 84) In: Roadex III - Northern Periphery

Andersson, Niclas; Christensen, Knud

Location-based Scheduling : Vurdering af LBS-metodens anvendelse i byggeprojekter. - 1ed. - Kgs. Lyngby : Technical University of Denmark, 2007 (p. 66) ISBN : 9788778772411

Villumsen, Arne

Arktisk Teknologi i Sisimiut : Statusrapport til KVUG. - Kgs. Lyngby : Center for Arktisk Teknologi, 2007 (p. 6)

Andersen, Elsa

Solar combi systems ISBN : 9788778772282 In: BYG Rapport;R-156

Thür, Alexander

Compact solar combisystems : High efficiency by minimizing temperatures ISBN : 9788778772343 In: BYG Rapport;R-160

Tommerup, Henrik M.

Energirenovering af typisk parcelhus opført i perioden 1960-1980 : Del 2: Målinger ISBN : 9788778772404 In: BYG Rapport;R-166

Nielsen, Lauge Fuglsang

Composite creep analysis of concrete : A rational, incremental stress-strain approach ISBN : 9788778772534 In: BYG Rapport;R-178

Astrup, Thomas; Damkilde,Lars

FEST3D Documentation : Users manual - BYG-DTU, 2007

Astrup, Thomas; Damkilde,Lars

FEST3D Documentation : Theory - BYG-DTU, 2007

Astrup, Thomas; Damkilde,Lars

FEST3D Documentation : Program structure - BYG-DTU, 2007

Astrup, Thomas; Damkilde,Lars

FEST3D Documentation : Aims and Applications - BYG-DTU, 2007

Schultz, Jørgen Munthe

Transmittans, reflektans og g-værdi for glas og ruder med integrerede PV-moduler - Danmarks Tekniske Universitet, 2007 (p. 14) ISSN : 1601 - 8605

Laustsen, Jacob Birck

Måling og beregning af samlet U-værdi for "Frederiksbergvindue", 1920 med koblede rammer. - kgs. Lyngby : BYG-DTU, 2007 (p. 25) ISSN : 1601-8605

Tian, Qian; Jensen, Ole Mejlhede

Measuring autogenous strain of concrete. - Lyngby, Denmark : DTU-BYG, 2007 (p. 36)

Rode, Carsten; Borchersen, Egil; Fan, Jianhua; Furbo, Simon; Kragh, Jesper

Lavenergihuset i Sisimiut : Årsrapport for Lavenergihusets ydeevne juli 2006 til juni 2007 In: BYG Sagsrapport;SR 07-10

Schultz, Jørgen Munthe; Furbo, Simon

Effektivitet af luft/væskesolfanger In: BYG Sagsrapport;SR 07-07

Fan, Jianhua; Furbo, Simon

Optimering og afprøvning af solfanger til solvarmecentraler In: BYG Sagsrapport;SR 07-07

Fan, Jianhua; Furbo, Simon

Forbedret varmtvandsbeholder til små solvarmeanlæg til brugsvandsopvarmning In: BYG Sagsrapport;SR 07-05

Rose, Jørgen

Udvikling af typehuse i lavenergiklasse 1 In: BYG Sagsrapport;SR 07-01

Furbo, Simon; Thür, Alexander; Bales,Chris; Fiedler, Frank; Rekstad,John; Meir,Michaela; Blumberga,Dagnija; Rochas,Claudio

Solar thermal component adapted to common building standards (SCAS). - Nordic Innovation Centre : Nordic Innovation Centre, 2007 (p. 106)

Furbo, Simon; Fan, Jianhua

Investigation on test method for a flat plate collector In: NEGST report

Furbo, Simon; Andersen, Elsa; Vogelsanger,Peter

Towards new standards for advanced stores : Final report

Nielsen, Lauge Fuglsang

A composite theory and its potential with respect to materials design ISBN : 87-7877-222-2 In: BYG Rapport;R-150



PhD theses

Thür, Alexander

Compact Solar Combi system : High Efficiency by Minimizing Temperatures, 2007 (p. 154) ISBN : 97-88778-772-343

Hansen, Thomas

Theory of Plasticity for Steel Structures : Solutions for Fillet Welds, Plate Girders and Thin Plates, 2007-03 (p. 239)

Thrane, Lars Nyholm

Form Filling with Self-Compacting Concrete, 2007 ISBN : 9788778772473

Krabbenhøft, Kristian; Hoffmeyer, Preben

Moisture Transport in Wood A Study of Physical-Mathematical Models and their Numerical Implementation, 200411

Costa, Joao Domingues

Earthquake Analysis of Concrete Structures, 200703

Andersen, Elsa

Solar Combi Systems, 2007 (p. 251) ISBN : 978-87-7877-228-2

Valkvist, Morten Birk Sabroe; Sørensen, Lars Schiøtt; Steffensen, Finn Buus; Thomsen, Per Grove; Nielsen, Peter Vilhelm

New Engineering Principles in Atrium Smoke Management : New Approach Flow and Spill Plume Model for Wide Openings, 200712 (p. 305) ISBN : 978-87-7877-242-8

Kjeldsen, Ane Mette

Consolidation behavior of cement-based systems, 2007. ISBN: 97-8877-8772-077

Bendixen, Mads

Rådgivende ingeniørers udfordringer : Et praksisstudium i professionel service-innovation med fokus på materialers og menneskers betydning, 200712 (p. 216) ISBN : 9788778772442;170

Andersen, Elsa

Solar combi systems, 200702 ISBN : 9788778772282 In: BYG Rapport;R-156

Simonsen, Rolf Bang; Koch, Christian

Et ledelseskoncept i politiske arenaer - Lean Construction i dansk byggeri, 2007-09

Jantzen, Thomas; Nielsen, Mogens Peter

Plasticitetsteori for jord som Coulomb materiale, 2007-09

Thuesen, Christian Langhoff

Anvendelse af den rette viden - et studie af byggeriets kulturelle organisering, 2007-01

Mortensen, Lone Hedegaard

Hygrothermal Microclimate on Interior Surfaces of the Building Envelope, 2007-08

MSc theses

Janni Elkjær Hansen

Design of Block Walls
Annette Krogsbøll

Christian Skodborg Hansen, Jacob Wittrup Schmidt

Strengthening of Old Metallic Structures with FRP Materials
Björn Täljsten, Jeppe Jönsson

Pedro Jose G. Cordoba

Wedge Splitting Test for Mineral Based Composites
Björn Täljsten, Katalin Orosz

Jakob F. Jensen

FRP Rebars to Reinforce Concrete Structures – A Comparison between Different Design Models
Björn Täljsten, Piotr Rusinowski

Halgrimur S. Sigurdsson

Debonding Problem in Concrete Beams Strengthened with CFI Crack
Björn Täljsten, Piotr Rusinowski

Rune Baszkiewicz

Analysis of New Forms of Human Re-sources Mangement in a Contractor
Christian Koch

Einar Karl Thorhalls-son

The Relationship between the Application of Partnering Collaboration and the Out-come of the Construction Project
Christian Koch

Kåre Flindt Jørgensen, Jesper Finne Pihl

Damping of Cables Through Support Vibration Control
Christos Georgakis

Anders Knudsen

Pedestrian-Induced Lateral Vibrations of Bridges
Christos Georgakis, Jeppe Jönsson

Martin Nymann Svendsen

Pedestrian-Induced Vertical Vibrations
Christos Georgakis, Jeppe Jönsson

Hanne Eiland

Structural Design of Multi-Storey Office Building
Egil Borchersen, Per Kjørbye

Mohamed Abdel Latif, Morten Isaksen

Optimizing Working Environment Management
Elsebet F. Pedersen

Thomas Hejnfelt, Rene Øksengaard

The Use of 3D- and BIM-Technology to Structural Analysis
Flemming Vestergaard

Claus Damkjær Nørrelund

Bending Behaviour of ECC/steel Composite Slabs
Gregor Fischer, Jeppe Jönsson

Lau Raffnsøe

Thermal Performance of Air Flow Win-dows
Hans Janssen, Jianhua Fan

Ágúst Ásgrímsson, Gudlaug Osk Sigurdardóttir

Analysis of a Spatial Truss System in an Untraditional Office Building
Henning Agerskov

Santiago González Vázquez

The strength of Glued Connections in load carrying Glass Structures
Henrik Stang

Aarón Amado Viña

The load carrying Capacity of Bolted Connections in Toughened Glass
Henrik Stang

Jacob Hamann Olsen

ECC-EPS Sandwich Panel for Construction Application
Henrik Stang, Gregor Fischer

Jacob Hamann Olsen

Preproject: Mechanical properties of Translucent Concrete
Henrik Stang, Gregor Fischer

Simon Rick Jensen, Moten Brogaard Jacobsen

Re Impregnation of Wood in Existing Structures – An Electrochemically Accelerated Process
Iben V. Christensen, Lisbeth Ottosen

Vigfus Björnsson

Adhesive Butt-joints in Glass
Jeppe Jönsson

Theis Vielsted Is-green

Finit Element Modelling of Faceted Shell in Glass
Jeppe Jönsson, Anne Bagger

Jacob Hudecek

Distortion of Thin-walled Beams
Jeppe Jönsson, Leif O. Nielsen

Kasper B. Kristensen

Modelling of Crack Propagation in Wood
John Forbes Olesen, Thomas Astrup

Toni Mühlestein Christiansen

Brandpåvirkning af parkeringsbygninger
Kristian Hertz

Lene Ulriksen, Thomas Hørlyck Ogesen

Fire-modelling – Moundaries for 2-zone Modelling
Lars Schiøtt Sørensen, Brian V. Jensen, ekstern

Martin Nerum Olsen

Durability of Polypropylene Fibre Reinforced Concrete
Mette Geiker, Carola Edvardsen

Augustyn Gawronski

Internal and External Interests in Local Urban Development
Morten Elle

Vibe Gry Nielsen

Urban Development in Ringsted
Morten Elle

Sidse Stengaard Jensen

Quality Assurance on International Projects
Niels Brock

Trine Sundsvold Christensen

Strenght and Deformation Properties of a Marine Clay at Thyborøn and Design of Harbour Constructions
Niels Nielsen Foged, Niels Bønding

Ann Mirjam Fugl-Meyer

Limestone Classification in the Copenha-gen Region using Borehole Geophysics
Niels Nielsen Foged, Ole Hededal

Dimitar Nikolaev Yurukov

Rock Mechanical Modelling with Reservoir Applications done by PLAXIS
Ole Hededal, Niels Foged

Sara Laustsen, Anders Møller Madsen

Engineered Airentainment in Concrete
Ole Mejlhede Jensen

Jens Brandt

Digital Handover in Various Client Orga-nisations
Per Anker Jensen

Guillem Mensa Vendrell

Comparison of Awarding Public Works between Spain and Denmark
Per Anker Jensen, Alvar Garla, ekstern

Andreas V. Bollerslev

Shearforce Capacity in Lightly Reinforced Lightweight Concrete Elements
Per Goltermann

Morteza S.M. Sarraf

Optimization of Lightly Reinforced Plates. Yield Lines in Concrete Walls
Per Goltermann

Søren Danielsen

Shearforce Capacity in Lightly Reinforced Lightweight Concrete Elements
Per Goltermann

Lasse Kamph Jepsen

Strength of Joints in Precast Concrete
Per Goltermann

Bjork Hauksdóttir

Nonlinear Analysis of Reinforced Concrete Shear Walls in Icelandic Buildings
Per Goltermann, Bjarni Bessason, ekstern

Magnus B. Kristjánsson, Eiríkur S. Búason

Reykjavik Concert Hall: Concrete Structures
Per Goltermann, Peter Noe Poulsen

Christina Wilken, Kennet Fredebo Rasmussen

Aggersvold Estate, Conversion of Barn
Per Kjærbye

Mette Ledgaard Holm

Office Building 6 Storeys – Concrete, Steel Glass
Per Kjærbye

Allan René Vinther, Kasper Paaske Larsen

Numerical Modelling of Concrete Plasticity in Structures
Peter Noe Poulsen

Jonas Christoffer Niebling

Numerical Modelling of Concrete Plasticity in Structures
Peter Noe Poulsen

Louise Toftebjerg Andersen

Connections in Tubular Constructions
Peter Noe Poulsen, Jesper Gath

Martin Morelli

Heat of Fusion Storage for Solar Heating Systems
Simon Furbo

Pedro Cordeiro

Solar Heating Systems in Portugal
Simon Furbo, Elsa Andersen

Lorenzo Lacovone

Investigation of Solar Combisystem
Simon Furbo, Eshagh Yazdanshenas

Janne Andersen, Rikke Jørgensen

Evacuated Tabular Solar Collectors Simon Furbo, Jianhua Fan

Emil Tang Engelund

Moisture Variations in Wood Cladding
Staffan Svensson, Preben Hoffmeyer

Kim Obel Nielsen, Mathias Gjendal

Experimental Methods for Determining the Longterm
Strength of Wood
Staffan Svensson, Tho-mas Astrup

Marie Lybeck

Bench in Construction
Sten Bonke

Tine Skotte

Daylight directing solar control glass lamelles
Svend Svendsen

Morten Vendelboe Nielsen, Mark A. Andersen

Passive Ventilation with Heat Recovery
Svend Svendsen

Inês Santos

Performance of Solar Shading Systems
Svend Svendsen

Cristobal Lopez Perez

Investigation of Composite Window with respect to Mechanical, Energy and
Durability Performance Svend Svendsen, Björn Täljsten

Dorthe Kragtig Mortensen, Anne Iversen

Integrated Ventilation and Heating System in Low Energy Buildings
Svend Svendsen, Peter Weitzmann, Toke Rammer Nielsen, Jianhua Fan

Ragnhildur Gunnarsdottir

Water Supply in Greenland Arne Villumsen

Marianne Willemoes Jørgensen

Reuse of Residuals from the Arctic Fishing Industry
Arne Villumsen

Nicolai S. Bennedsen

Engineering Geological Investigations for Road Construction in Qassiar-suq-area,
South Greenland
Niels Foged, Thomas Ingemann-Nielsen

**Trine Løjmand, Anne Sofie Overgaard**

Tile, Leca etc. Utilized in Greenlandic Building Industry
Arne Villumsen

Thomas Fænø Mondrup, Bastian Junker

Transformation of Urban Environment and Public Space
Birgitte Hoffmann

Svenning Lyholm Jensen

Sustainable Urban Development in Third World Countries
Birgitte Hoffmann

Brian Hurup-Felby, Jonas Vendel Jensen

Sustainable Integrated Design in an Urban Context
Birgitte Hoffmann, Lotte Bjerregaard Jensen

Ulla Frederiksen, Nina G. Jørgensen

Plate Structure in Fibre Reinforced Concrete and Glass
Henrik Almegaard, Lotte Bjerregaard Jensen

Julie Juhl Jakobsen, Maja Grud Christensen

Energy-refurbishment of Terrace House from – 70's
Jesper Engelmark, Toke Rammer Nielsen

Steffan S. Nielsen

Energy Renovation
Jesper Engelmark, Toke Rammer Nielsen

Nanna Dahl Pedersen, Michelle Herreholm

Brick Work in Building Constructions
Kurt Kielsgaard Hansen, Lotte Bjerregaard Jensen

Michael N. Steenberg

Design of Primary School Building
Lotte Bjerregaard Jensen, Carsten Munk Plum

Mikkel Simonsen, Rolf Schiøtt Pedersen

Detailed Design Proposal for Childrens Day Care Center
Lotte Bjerregaard Jensen, Svend Svendsen

Ditte I. Esbirk, Thomas Norling

Comprehensive Planning of the "Bispebjerg"
Area – A Local Perspective
Morten Elle, Peter Hartoft-Nielsen, SNS

Julie Storgaard Espensen

Comprehensive Planning of the "Bispebjerg" Area –
A Regional Perspective
Morten Elle, Peter Hartoft-Nielsen, SNS

Asker S. Larsen, Felix L.P. Meeske

Handing-over Procedure
Niclas Andersson, Knud Christensen

Stine Stensby Hansen, Signe Raymond Arnklit

New Housing in Lithuania
Per Kjærbye, Morten Toft Jensen

Barbara Harboe Lees

Study of Danish and Australian Timber Code
Staffan Svensson

Karin Bank Lindberg, Marie Bach Grønbæk

Interaction between Design and Production in Building
Sten Bonke

Jesper C. Pedersen, Martin J. Andersen

Management of Renovation Projects
Sten Bonke, Jesper Engelmark

Jonas Ransing Lindhart

Urban Space at Night – Lighting
Susanne B. Nielsen, Henrik Balslev, Rambøll

Eva E. Johnsen, Ulrik Pedersen

Design of New Energy Efficient Window
Svend Svendsen

Daniel T. Aarsø, Emil Redsted Edvardsen

Prefabricated Low Energy Buildings
Toke Rammer Nielsen

Mads Lundsgaard-Nielsen

Optimizing for Energy Consumed in Existing Multistory Buildings
Toke Rammer Nielsen

Ronni Lystgaard Pihl

Design of Church Building
Toke Rammer Nielsen, Anders Munck

Jesper Andersen

Energy-efficient Renovation
Toke Rammer Nielsen, Carsten Munk Plum, Peter Noyé, Niras

Carsten Lygum, Mads P. Kristiansen

Cellulac Concrete as a Primary Building Part in a One Family
Toke Rammer Nielsen, Kurt Kielsgaard Hansen, Björn Johanneson

Heide Skytte Larsen, Mikkel Bern

Deformation near anchored walls
Anette Krogsbøll

Christoffer U. Jørgensen, Kim Nielsen

Stability problems in deep excavations
Anette Krogsbøll

Daniel Lyngholm Jacobsen

Soil anchors Anette Krogsbøll

Kristoffer Negendahl Jensen

Development of an Evaluation-model Anne Dederichs

Nikolas Bue Jespersen, Mikkel Max Andersen

Crack development in FRP strengthened concrete structures
Björn Täljsten

Mads Helbo

Intelligent Vapour Barrier
Carsten Rode

Osama Hamza

Industrialized Construction - Utopia or a Revolution Waiting
to Happen? Christian Koch

Abdulkhadir Hasan Roble, Özgür Külpinar

Structural design of multi-storey building
Egil Borchersen

Christian Bjerglund Andersen, Thyge Pilgaard

Static- and Energy Analysis of Svinget 21
Egil Borchersen

Rasmus Pilgård Jensen

Energy Renovation of Typical Greenlandic Houses
Egil Borchersen, Jesper Kragh

Halilij Nesimi, Mahboob Pervez

Working environment in contracting firms
Elsebet F. Pedersen

Thomas Vinding Andersen, Orri Asbjarnarson

Manual for design of minor building
Flemming Vestergaard

Michael Olesen, Peter Villefrance Johansson

Evaluation of Traditional and Innovative Flooring Systems
Gregor Fischer, Per Goltermann

Thomas R. Møller, Danny K. Stoltz

Project engineering for pedestrian bridge crossing the Copenhagen harbour
Henning Agerskov

Claus O. Rasmussen

Bending Test with Steel Fiber Reinforced Concrete
Henrik Stang

Henrik J. Frederiksen, Asmus S. Christiansen

Constructions in glass
Henrik Stang

Jon Spangenberg, Nilas Mandrup Hansen

Concrete road
Henrik Stang

Tina Larsen, Thomas Kruse

Sandwich Elements in Fiber Concrete
Henrik Stang, Gregor Fischer

Kasper Hvid Pedersen, Jonathan Glud

Static Analysis: Ågade Bro
Henrik Stang, Per Kjærbye

Jacob A. Ployart Wetche

Stability of plates
Jeppe Jönsson, Jesper Gath

Rasmus Børner, Thomas Kjær Petersen

Bathroom renovation
Jesper Engelmark

Christian A. Andersen

Reinforcement Configurations for CRC Columns Subjected to Blast Load
John Forbes Olesen, Benjamin Riisgaard

Charlotte M. Christensen, Michael Holtemann Sass

Mechanically reinforced glass structures
John Forbes Olesen, Jens Henrik Nielsen

Rikard Nannestad

Repairing Faults and Deficiencies
Knud Christensen, Niclas Andersson

John Peter Ekstrand, Rune Hansen

SCC – on the effect of mixing
Mette Geiker

Martin Hemmingsen, Irene G. Hemmingsen

Casting and Curing of SCC-Floors
Mette Geiker

Alexander Poul Andreassen, Peter Andreas Wissing

Location Based Scheduling and Risk Management
Niclas Andersson

Richard Bogh Tobiasen

Det Digitale Byggeri – Analyse af digitalt udbud og levering
Niclas Andersson

Søren Holm Pedersen

New management tools in contracting firms
Niclas Andersson, Knud Christensen

Zahfran Qayum, Haroon K. Javad

Location-based management
Niclas Andersson, Knud Christensen

Dinh CongDoanh Ngo, Christoffer L.H. Jacobsen

Location Based Scheduling - The Scheduling Method that Supports Lean
Construction
Niclas Andersson, Sten Bonke

Erneraq Zeeb

Design Proposal of Road between Sisimiut and Kangerlussuaq, Greenland
Niels Brock, Arne Villumsen

Martin Bach Eriksson

Quality Assurance of Bored Piles
Niels Foged, Ole Hededal

Lars Kielsgaard Hansen, Jannick K. Roth

Digital construction
Per Anker Jensen

Lars Garde Rasmussen, Jens-Christian Kragh-Poulsen

Laterally Loaded Masonry Panels - Yield lines in masonry
Per Goltermann

Louise Pernille Straarup, Jens Junget

In-plane Shear Force Capacity in under Reinforced Lightweight
Concrete Elements
Per Goltermann

Anders Vilstrup Pedersen, Behrang Fayyazi

Up-Dating of Industry Building
Per Goltermann, Per Oluf H Kjærbye

Elnaz Ehsani

Design of building structures
Per Kjærbye

Anne Mette K. Olsen, Christian Hornstrup

New extension to Bryghuset, Hellerup
Per Kjærbye, Jesper Gath

Yashi Huang

Structural Design of Concrete Building
Per Kjærbye, Per Goltermann

Nete Rue Knudsen

Steel constructions in glass facades
Peter Noe Poulsen, Jesper Gath

Asger N. Ahmed

Solar energy for desalination of water
Simon Furbo

Mette Jensen, Louise H. Sørensen

Solar transmittance through glass
Simon Furbo

Morten Bandelow Winther

Study of a Wooden Joint in a Structural Structure
Staffan Svensson

Peter C. Wammen, Kim Stougaard

Multi skilled gangs and lean construction
Sten Bonke

Timmi Hampe Sargentoni, Morten Juul Jensen

Planning and Management of Building Project
Sten Bonke

Peter V.S. Nielsen

Logistics in the construction sector in Greenland
Sten Bonke, Egil Borchersen

Erik M. Johannesen, Philippe Scanlon

Energy retrofitting of one family house
Svend Svendsen

Benny Andersen, Katja Holst

Renovation of Atelierhusene with Regard to Energy
Toke Rammer Nielsen

Hans-Christian David

Road Construction and Permafrozen Ground
Arne Villumsen

Jonas Helgason

Design of Single Family House for Greenland
Egil Borchersen

Asdis Rosa Gunnarsdottir, Bogi Jon Antonsson

Project Development and Evaluation
Sten Bonke

Jorge De La Varga Lobato

Use of ECC for Improved Bridge Construction
Christos Georgakis, Gregor Fischer

Marie Louise Pedersen

Time Depent Stiffness of Laminated Glass
Henrik Stang, John Forbes Olesen

Joan Hee Roldsgaard, Martin Bjerre Nielsen

Time and Temperature Dependent Properties in Laminated Glass
Henrik Stang, John Forbes Olesen, Jens Henrik Nielsen

Dan Kallehave

Development and Application of Fibre Rein-forced Lightweight Concrete
Henrik Stang, Per Goltermann

Anders Madsen

Plastic Stability of Plates
Jeppe Jönsson

Heidi Christiansen, Jens Zangenberg Hansen

Mechanical Properties of Bolt Groups in Glass Structures
John Forbes Olesen, Jens Henrik Nielsen

Thomas Olsen

Beam Element for Modelling of RC in SLS and ULS
John Forbes Olesen, Peter Noe Poulsen

Therese Back Laursen, Marlene S. Hagen Eriksen

Heat and Moisture Investigation of Seagrass as Thermal Insulation in Outside Walls
Kurt Kielsgaard Hansen, Carsten Rode

Katarzyna Wróblewska

Application of Surface Treatment for Protection of Reinforced Concrete Structures
Mette Geiker

Hallgrímur Örn Arngrímsson

RCC for Dam Constructions – Characterization of Aggregates
Mette Geiker, Henrik Stang

Kirsten H. Jürgensen

Binding of Water in Dense Cementbased Materials
Ole Mejlhede Jensen

Jacob E. Christensen, Janni Tjell

Shear Failures in Lightweight Concrete Slabs
Per Goltermann



Stinne Hede Poulsen, Kenneth Kleissl

Flange Induced Buckling
Peter Noe Poulsen, Jesper Gath, Thomas Hansen

Aldis Run Larusdottir

Measurement of the convective heat transfer coefficient
from thermo active building systems focusing on acoustic
Peter Weitzmann

Kim Nicky Petersen, Svend Pilgaard Larsen

Frame Corner of I-Beams
Sigurdur Ormarsson, Staffan Svensson

Mads Christiansen, Mikkel Christopher Askjær-Friis

Moment Stiff Corner of Kerto-frame
Sigurdur Ormarsson, Staffan Svensson

Jakob Hauberg, Christian Ulrich Barfoed

Post and Beam Connections with Glued in Bolts
Staffan Svensson, Sigurdur Ormarsson

Anders Abildgaard Albertsen

Glued Connections between Wood and Steel Plates
Staffan Svensson, Sigurdur Ormarsson, Martin Uhre Mandrup

Søren Terkildsen

Development of a Simulation Model of the Thermo Active
Building System
Toke Rammer Nielsen

Eva Maria Larsen

Development of Ventilation Solutions for Low Energy
Single-family Houses
Toke Rammer Nielsen, Peter Weitzmann, Svend Svendsen

Henriette Ryssing Menå

Development of Ventilation Solutions for Low Energy Apartments
Toke Rammer Nielsen, Peter Weitzmann, Svend Svendsen

Jeppe Egelund Szameitat

Development of Ventilation Solutions for Low Energy Apartments
Toke Rammer Nielsen, Peter Weitzmann, Svend Svendsen

Susanne Vedel Jørgensen

Utilization of Waste from Fishing and hunting as Energy Supply
for Sisimiut, Greenland
Arne Villumsen, Janne Fritt-Rasmussen

Adalbjorg B. Guttormsdottir

Electrodialytic Remediation of Heavy Metals from
MSW Incineration Fly Ash from Sisimiut, Greenland
Arne Villumsen, Pernille Erland Jensen

Nanna Isbak Thomsen

Depository for MSWI Flyash in Greenland
Pernille Erland Jensen, Arne Villumsen

Katrine Staal-Thomsen, Johanne Wibroe

Investigation of the Effect of Electrodialytic Remediation
of Oil Contaminated Arctic Soil
Pernille Erland Jensen, Janne Fritt-Rasmussen

Staff

As of December 31 2007		2007	2006	2005	2004
Scientific	Professor	7	7	9	11
	Associate Professor	40	46	38	44
	Assistant Professor	7	10	15	15
	Other VIP	9	9	6	4
	PhD Students	42	37	44	40
Total		105	109	112	114
Technical and Administrative	Academic	9	11	11	10
	Clerical	13	13	12	12
	Technician	20	18	22	22
	Other	7	5	5	4
Total		49	47	50	48
Total Department Staff		154	156	162	162

Education

STÅ ¹ -total		514	483	508	519
Projects (students)	MSc	88	85	92	74
	BSc	51	31	36	56
	BEng	119	130	62	82
Admission (students)	BSc (Building Technology)	58	62	72	60
	BEng (Architectural Engineering)	47	50	52	42
	BEng (Civil Engineering-summer)	84	75	63	58
	BEng (Civil Engineering-winter)	29	38	30	32
	BEng (Arctic Technology)	18	8	9	8

Research

Refereed papers	Total	67	45	61	63
	Of these in ISI	48	30	43	37
PhD theses		13	5	8	10
Doctoral theses		0	0	1	0

Finances

Revenues	DTU-grant	59.827	56.656	53.184	52.523
	External revenue	30.326	31.033	30.862	28.563
	Total	90.153	87.689	84.046	81.094
Expenditures	Wages	66.782	63.021	62.725	62.917
	Other expenses	23.954	26.420	19.628	16.445
Total		90.736	89.441	82.353	79.362
Result		-583	-1.757	1.693	1.732
Available amount	January 1	6.200	7.957	6.264	4.532
Carried forward	December 31	5.617	6.200	7.957	6.264

STÅ¹: 1 STÅ is one student annual work (1 STÅ=60 ects points)

DTU Civil engineering
Technical University of Denmark, Brovej, Building 118
DK-2800 Kgs. Lyngby

Phone +45 4525 1700
Fax +45 4588 3282
byg@byg.dtu.dk
www.byg.dtu.dk