

The Rudd Adoption Research Program at the University of Massachusetts  
and the Evan B. Donaldson Adoption Institute present:

# NEW WORLDS OF ADOPTION: NAVIGATING THE TEEN YEARS

FRIDAY MARCH 30<sup>TH</sup>, 2012  
UMASS AMHERST | 8:00 A.M. - 5:30 P.M.

## KEYNOTE SPEAKER

**Megan R. Gunnar, Ph.D.**

Regents Professor, University of Minnesota, Director of the Institute of Child Development.

*"Post-institutionalized Children Become Teenagers: Early Deprivation and the Developing Teen Brain"*

## PANEL DISCUSSION

Panel and Audience Discussion of Clinical and Research Implications of Keynote Address.

Panelists include: • Ellen Pinderhughes • Sally Powers • David Scherer • Susan Smith • John Sobraske

## POSTER PRESENTATIONS

Attendees will learn about current adoption research projects and programs.

## CONCURRENT SESSIONS

- Adolescents and Identity
- Adoption and the Internet: Untangling the Web
- Experiences of Adolescent Birth Parents
- Medical Perspectives on International Adoption: Adolescent Growth, Health, and Development
- Resources and Opportunities for Students and New Professionals Focused on Adoption
- Who Am I? Where Do I Belong?
- Youth Speak: The Teen Years from the Inside Out

Rudd  
ADOPTION RESEARCH  
PROGRAM

EVAN B. DONALDSON  
adoptioninstitute

UMASS AMHERST DEPARTMENT OF  
PSYCHOLOGY



THE COLLEGE OF  
NATURAL  
SCIENCES



Psychological  
Services  
Center  
UMass.edu/PSC

BOSTON COLLEGE  
GRADUATE SCHOOL OF  
SOCIAL WORK

CRF  
Center for Research on Families

# Rudd ADOPTION RESEARCH PROGRAM



A generous gift from Andrew and Virginia Rudd, combined with matching funds, established the Rudd Family Foundation Endowed Chair. The Rudd's gift reflects their personal commitment to stimulate the development of new knowledge about adoption in order to benefit adoption practice (placements, education, post-adoption services, clinical work) and policy (at agency, state, federal, and international levels).

The Rudd Adoption Research Program is one of the key activities of the Rudd Chair. The program is located within the University of Massachusetts Amherst Psychology Department and is affiliated with the multidisciplinary Center for Research on Families.

### The program has four goals:

- to advance knowledge about the psychology of adoption
- to provide evidence-based knowledge to inform adoption policy and practice
- to build capacity for excellence in adoption research
- to promote adoption research initiatives of emerging scholars

In short, the program seeks to develop synergy among scientists, practitioners, and policymakers from varied disciplines who share interests in the many topics relevant to adoption. The ultimate goal of these activities is to contribute to evidence-based practice in adoption and to provide research-based information that will influence policy at agency, state, federal, and international levels.



The program is directed by Harold D. Grotevant, Ph.D., who holds the Rudd Family Foundation Chair in Psychology at UMass Amherst. He is Principal Investigator on the Minnesota / Texas Adoption Research Project (MTARP), a 20-year longitudinal research study that focuses on the consequences of variations in openness in adoption arrangements for all members of the adoptive kinship network: birthmothers, adoptive parents, and adopted children, and for the relationships within these family systems. His work has resulted in over 100 articles published in professional journals as well as several books, including *Openness in Adoption: Exploring Family Connections* (with Ruth McRoy, Sage Publications, 1998). He is a Fellow of the American Psychological Association, Association for Psychological Science, and the National Council on Family Relations; Senior Research Fellow of the Evan B. Donaldson Adoption Institute; former Board

President of Adoptive Families of America; and recipient of research, teaching, and leadership awards. Here he is pictured with Andrew and Virginia Rudd, whose generous gift established the Rudd Family Foundation Chair in Psychology.

# PROGRAM

- 8:00 – 9:00 REGISTRATION AND CONTINENTAL BREAKFAST**  
Ballroom, Student Union - University of Massachusetts Amherst
- 9:00 – 9:15 WELCOME AND OPENING REMARKS**  
Hal Grotevant, Rudd Family Foundation Chair of Psychology, UMass Amherst.
- 9:15 – 10:45 KEYNOTE**  
“Post-Institutionalized Children Become Teenagers: Early Deprivation and the Developing Teen Brain” | Ballroom, Student Union  
Presenter: Megan Gunnar
- 10:45 – 11:00 BREAK**
- 11:00 – 12:00 PANEL DISCUSSION**  
Panel and Audience Discussion of Clinical and Research Implications of Keynote Address | Ballroom, Student Union  
Chair: Sally Powers Panelists: David Scherer, Susan Smith, John Sobraske and Ellen Pinderhughes.
- 12:15 – 1:00 LUNCH**  
Ballroom, Student Union
- 1:00 - 1:30 POSTER SESSION, BOOK SALE, NETWORKING**  
Ballroom, Student Union
- 1:45 – 3:00 TOPICAL CONCURRENT SESSIONS - SESSION 1**
- 1. Who Am I? Where Do I Belong? | Ballroom, Student Union**  
Presenters: David Brodzinsky and Sally Popper.
  - 2. Adolescents and Identity | Cape Cod Lounge, Student Union**  
Presenters: Amanda Baden and Jeanne Howard.
  - 3. Youth Speak: The Teen Years from the Inside Out | Room 917, Campus Center**  
Presenters: Kim Stevens and a panel of teens who have experienced foster care and/or adoption.
  - 4. Resources and Opportunities for Students and New Professionals Focused on Adoption | Room 904-908, Campus Center.**  
Presenters: Abbie Goldberg and Rachel Farr.
- 3:15 – 4:30 TOPICAL CONCURRENT SESSIONS - SESSION 2**
- 1. Adoption and the Internet: Untangling the Web | Ballroom, Student Union**  
Presenters: Adam Pertman and Mary Fournier.
  - 2. Medical Perspectives on International Adoption: Adolescent Growth, Health, & Development | Cape Cod Lounge, Student Union**  
Presenters: Dana Johnson and Laurie Miller.
  - 3. Experiences of Adolescent Birth Parents | Room 904-908, Campus Center**  
Presenters: Ruth Mc Roy and Birth Parents: Marvin Drake & Susan Nickerson.
- 4:30 – 5:30 POSTER SESSION, BOOK SALE, RECEPTION, AND CLOSING**  
Student Union Ballroom

# PRESENTERS

## KEYNOTE



### **MEGAN GUNNAR, PH.D.**

Regents Professor, University of Minnesota; Director of the Institute of Child Development.

Megan R. Gunnar is Regents Professor and Distinguished McKnight University Professor of Child Psychology and Director of the Institute of Child Development at the University of Minnesota. Among many other honors, she received the Distinguished Scientific Contribution to Child Development Award from the Society for Research in Child Development (2009) and the G. Stanley Hall Award for Distinguished Contributions to Developmental Psychology from the American Psychological Association (2006). She has published over 130 articles in refereed journals and over 55 chapters in edited volumes. Her research has been funded by the National Institute of Child Health and Human Development, National Institute of Mental Health, National Science Foundation, and a number of private foundations. She is currently Director of the NIMH Center on Early Experience, Stress, and Neurobehavioral Development.

Gunnar is the principal investigator for The Minnesota International Adoption Project. She is also co-principal investigator of The Early Experience, Stress Neurobiology, and Prevention Science Network. Dr. Gunnar received her Ph.D. in Developmental Psychology from Stanford University in 1978. Following her graduate work she completed a postdoctoral fellowship at Stanford Medical School in Developmental Psychoneuroendocrinology. Dr. Gunnar came to the University of Minnesota in the Fall of 1979, becoming a full professor in 1988. In 1996 she was honored as a Distinguished McKnight University Professor, and in 2006 was named Regents Professor, the highest distinction a University of Minnesota professor can receive. Dr. Gunnar's main interest area is stress and coping in infants and young children. Her work documents the importance of sensitive and responsive care by adults in the modulation and buffering of stress physiology in the developing child. She has studied children living in orphanages in Romania and Russia and with her students traces the development of post-institutionalized children in the months immediately following adoption. Dr. Gunnar is a member of the Society for Research in Child Development, the International Society for Infant Studies, and the International Society of Developmental Psychobiology. She was also a member of the National Academy of Science's panel to review the science of early child development. Dr. Gunnar is currently a member of the Canadian Institute of Advanced Research's program on Experienced-Based Brain Development.

## PANEL DISCUSSION



### **SALLY POWERS, ED.D. (Chair)**

Professor, University of Massachusetts Amherst and Director, Center of Research on Families.

Dr. Powers is Professor of Psychology and Neuroscience at the University of Massachusetts Amherst and Associate Dean in its College of Natural Sciences. Dr. Powers' research investigates the interaction of normal developmental processes and psychopathology in adolescents. She focuses on understanding the role of cognitive, personality, and life history risk factors, interpersonal behavior in close relationships, and neuroendocrine functioning in the development of psychopathology. Her most recent studies, funded by NIMH, investigate a biopsychosocial model of factors hypothesized to contribute to the gender difference in the prevalence of adolescent and young adult depression. Colleague Paula Pietromonaco and she are also conducting a NCI-funded longitudinal study of close relationships and changes in neuroendocrine functioning throughout the early years of marriage.



### **DAVID SCHERER, PH.D.**

Professor, Clinical Psychology and Director, Clinical Training, University of Massachusetts Amherst.

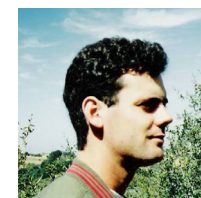
Dr. Scherer earned his Ph.D. in Clinical Psychology from the University of Virginia in 1989 and has been on the Psychology faculty at UMass Amherst since 2005. Dr. Scherer's research has focused on the ethics and process of adolescent and family decision-making in medical and research contexts. He also has conducted research on and published about psychotherapy for troubled adolescents and their families.



### **SUSAN SMITH, LCSW**

Professor Emerita School of Social Work Illinois State University & Program Director, Evan B. Donaldson.

Susan Smith has been a leading researcher in the field of post-adoption services for the past 25 years. Starting with a ground-breaking study on adoption disruption in 1988, Smith and her colleague, Jeanne Howard, began a scholarly partnership which has continued, resulting in many joint publications, over 60 presentations at professional conferences, and other activities on a national scale. Susan has co-authored three books on adoption, *Promoting Successful Adoptions: Practice with Troubled Families* (1999), *After Adoption: The Needs of Adopted Youth* (2003), and *Siblings in Adoption and Foster Care: Traumatic Separations and Honored Connections* (2009) as well as over 15 journal articles, several book chapters, and numerous scholarly monographs. Smith and Howard jointly received the U.S. Department of Health and Human Services Adoption 2002 Excellence Award for their work in applied scholarship and research. She currently resides in Raleigh, North Carolina.



### **JOHN SOBRASKE, MA, CLINICAL PSYCHOLOGY, LMFT, LMHC (NY)**

Adoption Therapist.

John Sobraske is an adoption psychotherapist in private practice who works extensively with members of the foster care and adoption constellations. His research interests include the cross-cultural history of adoption practice, media influence on adoption perspectives and policy, depth work with adult adoptees, and in adoption, the ability of research to inform practice and practice to inform research. John is adopted and a step-parent of adopted children. He is a frequent presenter at national conferences on adoption and regularly provides consultation and training to agencies and counties throughout Western New York.



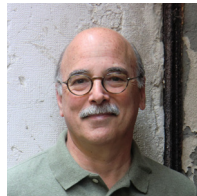
### **ELLEN PINDERHUGHES, PH.D.**

Associate Professor, Eliot Pearson Department of Child Development, Tufts University.

Ellen Pinderhughes is a developmental and clinical psychologist who has worked as a researcher, therapist, and clinical consultant. Her research focuses primarily on the complex interplay of family dynamics in adoptive and biological families with children at risk for problem outcomes. With 20 years of clinical and research experience in adoption, Dr. Pinderhughes is nationally known for her work on older child adoptions. She is also Principal Investigator on a study of Chinese girls' understanding of adoption, identity, and cultural differences and parents' childrearing experiences. She is also a Senior Research Fellow for the Evan B. Donaldson Adoption Institute. She serves on several professional editorial boards, including *Adoption Quarterly*, and has written extensively on adoption-related issues in books and journals.

# PRESENTERS

## CONCURRENT SESSIONS - SESSION 1 "Who Am I? Where Do I Belong?"



### DAVID BRODZINSKY, PH.D.

Research and Project Director, Evan B. Donaldson Adoption Institute

For the past three decades, his research and scholarly writing has focused primarily on issues related to the adjustment of adopted children and their families. He is especially well known for his research on developmental and family issues in adoption. Dr. Brodzinsky relocated to Oakland, CA, in 2006, where he maintains a private clinical and consultative practice focusing on the mental health needs of members of the adoption kinship system. He has been a consultant to countless public and private adoption agencies and has conducted training workshops on adoption and foster care throughout North America and Europe. He has published widely on the psychology of adoption in professional journals and is the co-author or co-editor of six books on adoption, the most recent one being *Adoption by Lesbians and Gay Men: A New Dimension in Family Diversity* (with Adam Pertman).



### SALLY POPPER, PH.D., M.ED.

Clinical Psychologist and Consultant

Sally Popper is a clinical psychologist and consultant working with several agencies and initiatives in the Pioneer Valley, including the Re-Envisioning Foster Care Task Force. Prior to moving to the Pioneer Valley, she was involved in private practice psychotherapy, focusing on treatment of families with children who had experienced loss, trauma, or abuse. She has also conducted training and supervision for therapists working with children who have experiences of attachment disruption and trauma. Popper received her M.Ed. in Early Childhood Education from Rutgers University and her Ph.D. in Clinical Psychology from the University of Pittsburgh. She has received advanced clinical training in working with children who have attachment issues. She is co-author of *Attachment Focused Therapy: A Professional Practice Guide*, published by the association for the Training and Treatment on the Attachment of Children.

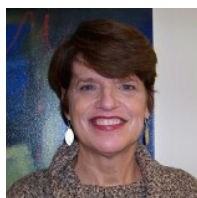
## "Adolescents and Identity"



### AMANDA L. BADEN, PH.D.

Associate Professor, Department of Counseling and Educational Leadership, Montclair State University in New Jersey.

Baden's experiences both personally and professionally have led her to focus her research and clinical practice on adoption triad members, transracial/international adoption issues, racial and cultural identity, and multicultural counseling competence. Dr. Baden co-created a model of identity for transracial and international adoptees called the Cultural-Racial Identity Model. She is one of the editors of the text entitled, *The Handbook of Adoption: Implications for Researchers, Practitioners, and Families* (Sage Publications), and she is on the editorial board for *Adoption Quarterly*. She also co-chairs the Biennial Adoption Initiative Conferences in New York City held at St. John's University. She is a regular columnist for *Families with Children from China* Journals across the US and for *Mei Magazine*, a publication for Chinese adopted children. Dr. Baden was named an Angel in Adoption by the Congressional Coalition on Adoption and was recently invited to be a Senior Research Fellow of the Evan B. Donaldson Adoption Institute. Dr. Baden's clinical specializations include counseling adoption triad members and transracial adoptees. She is a licensed psychologist with a clinical practice in Manhattan.



### JEANNE HOWARD, PH.D.

Professor at Illinois State University.

Dr. Jeanne Howard is Policy and Research Director of the Evan B. Donaldson Adoption Institute. Professor Howard completed her Ph.D. in social work at the University of Chicago and was involved in several research studies conducted by the Chapin Hall Center for Children at the University of Chicago. Howard brought expertise from having taught child welfare courses and conducted research. She had taught previously at the University of Illinois and Southeast Missouri State University. Howard serves on the post adoption task force of the North American Council for Adoptable Children and received the U.S. Department of Health and Human Services Adoption 2002 Excellence Award for her work (with Smith) in applied scholarship and research. Also in 2006 she received the Congressional Angels in Adoption Award.

## "Youth Speak: The Teen Years from the Inside Out"



### KIM STEVENS, M.ED.

Project Manager, Community Champions Network, North American Council on Adoptable Children.

Kim Stevens is Project Manager for the Community Champions Network of the North American Council on Adoptable Children. CCN is working to support communities in building advocacy coalitions to establish effective post adoption support services. Her prior professional experience includes eight years with Massachusetts Families for Kids. Kim moved from part-time Family Advocacy Coordinator to Co-Director of MFFK. Kim established the Speak Out Team, a nationally recognized model for youth advocacy and awareness raising. The seven founding members and staff were able to support and facilitate a Team that grew to more than 130 members. She also launched the Lifelong Families for Adolescents initiative with the Massachusetts Department of Social Services and assisted in successful advocacy for post-adoption services in Massachusetts.

Kim has provided training and consultation on foster care, adoption and youth permanency issues throughout the U.S. and Canada. She and her husband, Buddy have six children, four of whom were adopted from the public foster care system.

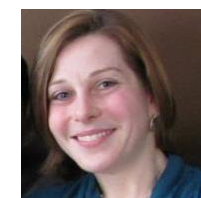
## "Resources and Opportunities for Students and New Professionals Focused on Adoption"



### ABBIE GOLDBERG, PH.D.

Assistant Professor, Psychology, Clark University

Abbie E. Goldberg is an Associate Professor of Clinical Psychology at Clark University in Worcester Massachusetts, and Senior Research Fellow at the Evan B. Donaldson Adoption Institute. Her research focuses on diverse families, including lesbian/gay parent families and adoptive families. She is the author of over 40 peer-reviewed journal articles as well as the book *Lesbian and Gay Parents and Their Children: Research on The Family Life Cycle*, which was published by the American Psychological Association in 2010. Her forthcoming book, *Gay Dads: Transitions to Adoptive Fatherhood*, will be published by NYU Press in Spring of 2012.



### RACHEL FARR, PH.D.

Rudd Postdoctoral Research Scholar in Psychology, University of Massachusetts Amherst.

Rachel received her Ph.D. in Developmental and Community Psychology from the University of Virginia in January 2011. Rachel's research focuses on adoptive families, child development, parenting, and family functioning. As a postdoc in the Rudd Program, Rachel is working with her colleagues on several lines of research related to openness arrangements among birth and adoptive families, particularly as adoptees enter adulthood. A central question in this work regards how adoptees conceptualize "family" in adulthood and how primary tasks of adulthood (e.g., entering long-term romantic relationships, marriage, establishing a career, having children) are influenced by adoptees' ongoing relationships with adoptive and birth family members. Rachel's graduate work included a large study of adoptive families from across the United States, headed by lesbian, gay, and heterosexual parenting couples, all of whom had completed domestic infant adoptions. The study examined the ways in which parental sexual orientation impacts child outcomes, parenting, and family dynamics in adoptive families with young children. With financial support from the UCLA Williams Institute, as well as the American Psychological Association, this study has been important in addressing current controversy surrounding adoption by lesbian and gay adults and informing adoption policy, practice, and law. The study has received national attention from mainline news sources, such as the New York Times, The Huffington Post, and The Washington Post, and has appeared in the media, such as in the TV Show, "Outlaw." In addition to research, Rachel also enjoys teaching psychology courses, such as Child Development, Diverse Family Systems, and Research Methods and Statistics. She was the recipient of several teaching awards at the University of Virginia.

# PRESENTERS

## CONCURRENT SESSIONS - SESSION 2

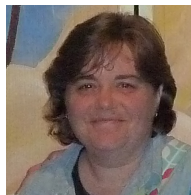
### “Adoption and the Internet: Untangling the Web”



#### ADAM PERTMAN

Executive Director of the Evan B. Donaldson Adoption Institute

Adam Pertman is Executive Director of the Evan B. Donaldson Adoption Institute. Pertman – a former Pulitzer-nominated journalist – is also Associate Editor of Adoption Quarterly and the author of two books published in 2011, *Adoption Nation: How the Adoption Revolution is Transforming Our Families – and America* and *Gay and Lesbian Adoption: A New Dimension in Family Diversity*, and has written many other chapters and articles on adoption- and family-related issues in books, scholarly journals and mass-market publications. Pertman has delivered hundreds of keynotes, trainings and other presentations in this country and internationally for organizations including the Child Welfare League of America, the American Adoption Congress, the National Academy of Sciences, the Annie E. Casey Foundation, the Joint Council on International Children’s Services, the Massachusetts Adoption Resource Exchange, the National Association of Child Advocates, and numerous professionals including judges, social workers, psychiatrists, educators and journalists – as well as pre-adoptive and adoptive parents, birthparents and adopted persons. As a leading expert on adoption and family issues, he is widely quoted in the media and has been a guest on many programs, including “Oprah,” “Today,” “The View” and “Nightline.”



#### MARY FOURNIER

Domestic Adoption Program Manager, Wide Horizons for Children.

Mary Fournier, LCSW earned her Master’s of Social Work Degree from the University of Connecticut School of Social Work in 1995 after a life-changing trip to China. Her interest in Social Work and her interest in China, led her to the field of adoption. She currently works as the Domestic Adoption Program Manager for Wide Horizons for Children, Inc. a position she has been in for the past 3 years. Mary has been with Wide Horizons for 13 years and in the adoption field for 15+ years. She has conducted workshops on topics such as “Clinical Issues in Adoption” and “Homeland Travel.” Since joining the staff of Wide Horizons, Mary has had the honor of traveling to China on 6 additional occasions and to Ethiopia to assist adoptive parents be united with their child. Mary is the adoptive mother of Olivia, age 11 and Jenna age 8 both of Guatemalan heritage.

### “Medical Perspectives on International Adoption: Adolescent Growth, Health, and Development”



#### DANA E. JOHNSON, M.D., PH.D..

Professor, Pediatrics, University of Minnesota

Dr. Johnson is a Professor of Pediatrics and member of the Divisions of Neonatology and Global Pediatrics at the University of Minnesota Medical School where Dr. Johnson co-founded the International Adoption Program in 1986. His research interests include the effects of early institutionalization on growth and development and the outcomes of internationally adopted children. Dr. Johnson is an invited speaker worldwide, a Senior Research Fellow in the Evan B. Donaldson Adoption Institute, serves on the editorial boards of *Adoption Quarterly* and *Adoptive Families Magazine* and has authored over 200 scholarly works. He received the Distinguished Service Award from Joint Council for International Children’s Services, Friend of Children Award from the North American Council on Adoptable Children and the Harry Holt Award from Holt International. He serves on the board of directors of Joint Council on International Children’s Services, Half The Sky Foundation and SPOON Foundation. He is the father of three children including an adopted son from India.



#### LAURIE MILLER, M.D

Professor of Pediatrics at Tufts University School of Medicine.

Miller founded the International Adoption Clinic at Tufts Medical Center in 1988. She has served as a pediatric consultant in more than 10 countries. She oversaw an NIH-funded program to improve outcomes for orphanage residents in Russia for many years. She established “Big Sisters” projects in Baby Homes in Russia, Ukraine, and India. Dr. Miller serves on the NIH Study Section for Brain Disorders in the Developing World. She currently is the Principal Investigator of a longitudinal project to monitor and improve the health and nutritional status of impoverished children in Nepal. She has published over 80 peer-reviewed articles and 30 chapters related to pediatrics and international adoption, as well as two books (*Handbook of International Adoption Medicine*, Oxford University Press, and *Encyclopedia of Adoption* [with C. Adamec], Facts on File). She also is a board-certified pediatric rheumatologist and directs the pediatric rheumatology training program at Tufts Medical Center.

### “Experiences of Adolescent Birth Parents”



#### RUTH G. MCROY, PH.D.

Donahue and DiFelice Endowed Professor, Boston College Graduate School of Social Work.

A practitioner, academician, researcher, trainer and lecturer in the field for over 30 years, her work has focused on such topics as open adoptions, kinship care, adoptive family recruitment, minority recruitment, racial identity development, transracial adoptions, family preservation, adolescent pregnancy, African American families, family violence, disproportionality in child welfare, older child adoptions, and post-adoption services. She has served as PI or Co-PI on numerous federal, foundation, state and local research and evaluation projects over the years. Her recent honors include the following: 2004 Flynn Prize for Social Work Research from the University of Southern California, the 2005 George Silcott Lifetime Achievement Award from the Black Administrators in Child Welfare, the 2006 Distinguished Achievement Award from the Society for Social Work and Research and the 2006-2007 University of Texas at Austin Graduate School’s Outstanding Alumna Award. In 2010 she was selected as a fellow in the American Academy of Social Work and Social Welfare and also was named the recipient of the St. John’s 2010 Outstanding Scholar in Adoption Award.

#### MARVIN DRAKE

Birth Parent

Marvin became a birthfather 52 years ago and reunited with this birthson, David, 2 ½ years ago. David’s birthmother, Marvin, and Marvin’s wife began a search for David three years ago, and with the support of ACONE, found and met David within a few months. Marvin and his wife, Elizabeth, are also in reunion with David’s adoptive family. David’s adoptive mother, Phyllis, has spent vacations with Marvin’s family during the past two summers. Marvin and Elizabeth have visited David at his home for long weekends and visit Phyllis frequently at her home. David and Marvin talk frequently on the phone about everything, particularly about music since they are both avid musicians. Marvin is a retired engineer who in his professional career has been a scientist, college professor, engineer and consultant. He has lectured at several universities in Massachusetts and has given seminars and short courses for professional societies and educational organizations in the USA and Europe. Both Marvin and Elizabeth look forward to developing a strong and lasting relationship with David, Phyllis, and their family as they all work toward becoming an extended family.

#### SUSAN NICKERSON

Birth Parent

Susan Nickerson is a birthmother from the closed adoption system of 1970. She and her birthson were reunited 11 years ago and continue on the journey of getting reacquainted. Susan is married and has 3 daughters and one grandson. She works as a hair stylist in skilled nursing and assisted living facilities, serving long-term care and rehabilitation clients.

# POSTER PRESENTATIONS

- 1. Parents' Ethnic Identification, Attitudes about Race/Cultural Differences and Bicultural Competence**  
Susanne Agerbak (Tufts University), Sing-Yiing Chung, Xian Zhang, Ellen Pinderhughes
- 2. Does Openness Affect Cultural Socialization in Transracial Adoptions?**  
Charlene Chester (Pennsylvania State University), Jenae M. Neiderhiser, Leslie D. Leve, MisakiNatsuaki, David Reiss
- 3. Adopted Child's Race and Sex Predict Cultural Socialization in Transracial Adoptions**  
Kathleen Davey (Pennsylvania State University), Charlene Chester, JenaeNeiderhiser, Leslie Leve, MisakiNatsuaki
- 4. White Adoptive Parents Communicating About Racism with their Asian Born Children**  
Jen Dolan (University of Massachusetts Amherst)
- 5. Contact with Birth Families among Adoptive Families with Lesbian, Gay, and Heterosexual Parents**  
Rachel H. Farr (University of Massachusetts Amherst) and Abbie E. Goldberg
- 6. Transracial Adoptees: The Search for Birth Family and the Search for Self**  
Danielle E. Godon (Mount Holyoke College), Patricia G. Ramsey, Whitney F. Green
- 7. Transracially Adopted Adolescent Development: The Influence of Different Adolescent-Parent Perspectives of the Family**  
Katie M. Hrapczynski (University of Maryland) and Leigh Leslie
- 8. Bronfenbrenner's Ecological Theory and the Impact of Community Climate among Adoptive Families with Lesbian, Gay, and Heterosexual Parents**  
Deanna L. Julian (University of Massachusetts Amherst) and Rachel H. Farr
- 9. Developmental Tasks of Prospective Adoptive Parents in Korea**  
HyangEun Kim (Kosin University)
- 10. Individual Personality Traits and Communicative Behavior in Adoptive and Non-Adoptive Families**  
Bibiana D. Koh (University of Minnesota), Ascan F. Koerner, Laurel Davis, Martha A. Rueter
- 11. The Yin & Yang of Identity and Relationships: The Queer Korean Adoptee Experience**  
Shawyn Lee (University of Minnesota)
- 12. Factors Within the Construct of Contact in Adoption Over Time**  
David M. Martin (University of Minnesota, TC), Jenae M. Neiderhiser, Misaki N. Natsuaki, Leslie D. Leve, Daniel S. Shaw, Laura Scaramella, David Reiss
- 13. Internationally Adopted Infants: Short-Term Self-regulation and Adaptation**  
Jessica A.K. Matthews (Tufts University), Chie Kotake, Elizabeth Mullins, Ellen Pinderhughes, Linda Tirella, Laurie Miller, Ann Easterbrooks
- 14. Challenges and Strengths in Parenting Foster-to-Adopt Children: Perspectives of Lesbian, Gay, and Heterosexual Parents**  
April M. Moyer (Clark University), Lori A. Kinkler, Hannah B. Richardson, Abbie E. Goldberg
- 15. A Strengths-Based Assessment of Young Adults Raised as Children of Lesbian Adoptive Mothers**  
Alicia Padovano (Widener University)
- 16. Intercountry Adoption Declines Lead to New Practices of Surrogacy in Guatemala**  
Karen Smith Rotabi (Virginia Commonwealth University)
- 17. Before Adopting: Decision-Making in International Adoption**  
Sophie Strassberg (Mount Holyoke College), Patricia G. Ramsey
- 18. Children Adopted from Eastern Europe: Evolution of Socio-emotional Symptoms at 8 years Post Adoption**  
RéjeanTessier (Université Laval), Sarah Paquin, KrassimiraMarinova
- 19. Parents' Experiences Launching Internationally Adopted Children into Young Adulthood**  
Richard Tessler (University of Massachusetts Amherst) and Gail Gamache
- 20. Adoptive and Nonadoptive Family Relationship Quality from Adolescence into Adulthood**  
Amy Walkner-Spaan (University of Minnesota) and Martha A. Rueter
- 21. Andrew and Virginia Rudd Centre for Adoption Research and Practice, University of Sussex**  
Robin Banerjee (University of Sussex)

## The Andrew and Virginia Rudd Centre for Adoption Research and Practice

The Andrew and Virginia Rudd Centre for Adoption Research and Practice at the University of Sussex is being established following a substantial donation by Sussex graduate Andrew Rudd and his wife Virginia.

Working in partnership with the Rudd Adoption Research Program at UMass Amherst, the Rudd Centre at Sussex has an interdisciplinary focus on understanding and supporting the development and well-being of children and young people who have been adopted. It will draw on recent advances in developmental neuroscience and psychology in order to inform our knowledge of how separation, institutionalization, maltreatment and other trauma influence children's development. A key priority for the Rudd Centre will be the translation of cutting edge research into effective policy and practice to support the well-being of adopted children and their families.

The University of Sussex is a leading teaching and research institution in the UK. The Rudd Centre will be based within the School of Psychology, which is one of the largest centres for the study of psychology in the UK. The Centre will complement existing research labs in the areas of neuroscience, developmental psychopathology, and family and peer relations.

The Rudd Centre will also have very close links with the School of Education and Social Work, which is at the forefront of innovation and development in social work education and research in the UK. The interdisciplinary orientation of the Centre will thus provide a unique bridge between research, policy, and practice.

The University of Sussex is now seeking candidates for the **Andrew and Virginia Rudd Professor of Psychology (Adoption Studies)**, who will also act as **founding Director of the Rudd Centre**. For further details, go to:

[www.sussex.ac.uk/aboutus/jobs/551](http://www.sussex.ac.uk/aboutus/jobs/551)



Attending the conference from the University of Sussex is:

**Prof Robin Banerjee**  
Professor of Developmental Psychology

**US**  
University of Sussex



The Rudd Centre builds on existing strengths in Neuroscience, Developmental and Clinical Psychology, and Social Work



The University of Sussex has a beautiful campus, combining award-winning architecture with green open spaces



The campus is only five miles from the lively seaside city of Brighton & Hove, just one hour away from London



*Rudd*  
**ADOPTION RESEARCH**  
PROGRAM

The Rudd Adoption Research Program, funded by the Rudd Family Foundation Chair in Psychology, is located within the University of Massachusetts Amherst Psychology Department and is affiliated with the interdisciplinary Center for Research on Families. The program conducts state-of-the-art research on the psychology of adoption that will impact policy at agency, state, federal, and international levels. It also trains postdoctoral scholars, graduate students, and undergraduate students in theories and methods needed for the study of adoption. Conferences, workshops, and publications disseminate research-based information needed by practitioners, policy makers, and the public. And through key community partnerships, the Rudd Adoption Research Program demonstrates how adoption research can transform policy and practice for the benefit of all whose lives are touched by adoption.

**UMASS  
AMHERST**

EVAN B. DONALDSON

**adoptioninstitute**



THE COLLEGE OF  
**NATURAL  
SCIENCES**



Psychological  
Services  
Center  
UMass.edu/PSC

**BOSTON COLLEGE  
GRADUATE SCHOOL OF  
SOCIAL WORK**

UMASS AMHERST DEPARTMENT OF  
**PSYCHOLOGY**