

Introducing ILRI's Science Strategy 2016-2020

Iain Wright

ILRI Institute Planning Meeting
4-7 October 2016



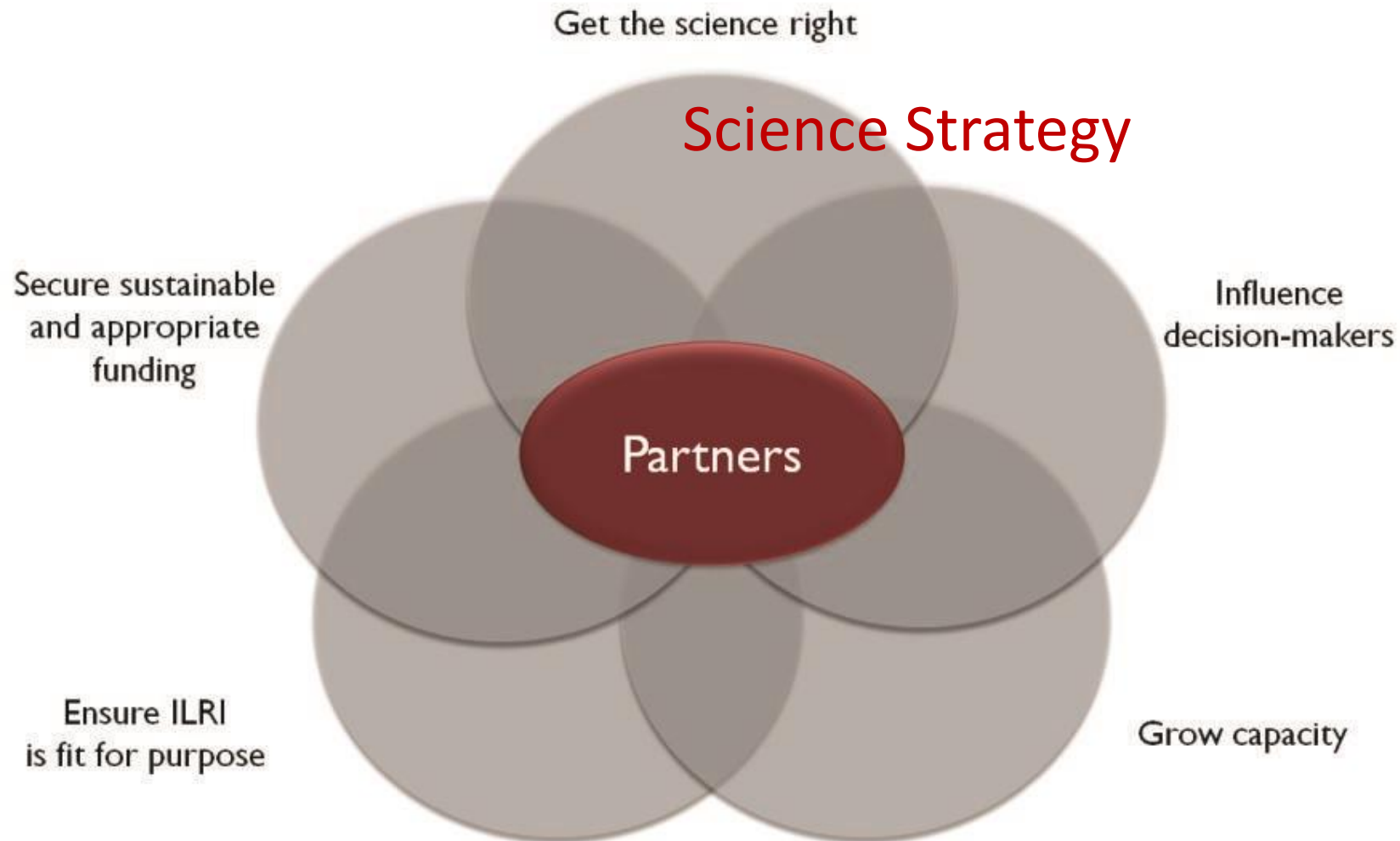
ILRI
INTERNATIONAL
LIVESTOCK RESEARCH
INSTITUTE



ILRI Strategy 2013-2022

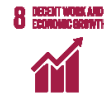


The critical success factors



CGIAR's Strategic Goals

CGIAR
STRATEGIC
GOALS



Opportunities and challenges in the livestock sector

Provides food and nutritional security

BUT overconsumption can cause obesity

Powers economic development

BUT equitable development can be a challenge



Priority research areas

- Animal genetics and breeding - gene discovery, genetic improvement, breeding strategies and conservation and use of genetic resources.
- Animal and human health—improvement of herd health, vaccine and diagnostic development, food safety, emerging infectious and zoonotic disease control.
- Feed resources development—conservation and use of forage genetic resources, increasing feed production and improving feed utilization.
- Sustainable livestock systems—sustainable intensification of livestock systems, livestock and the environment and increased resilience of livestock systems and communities.
- Policies, value chains and livelihoods—supporting livestock policy development and implementation, trade, livestock value chain development to equitably enhance livelihoods (gender, youth) and improve nutrition, and the impact of research

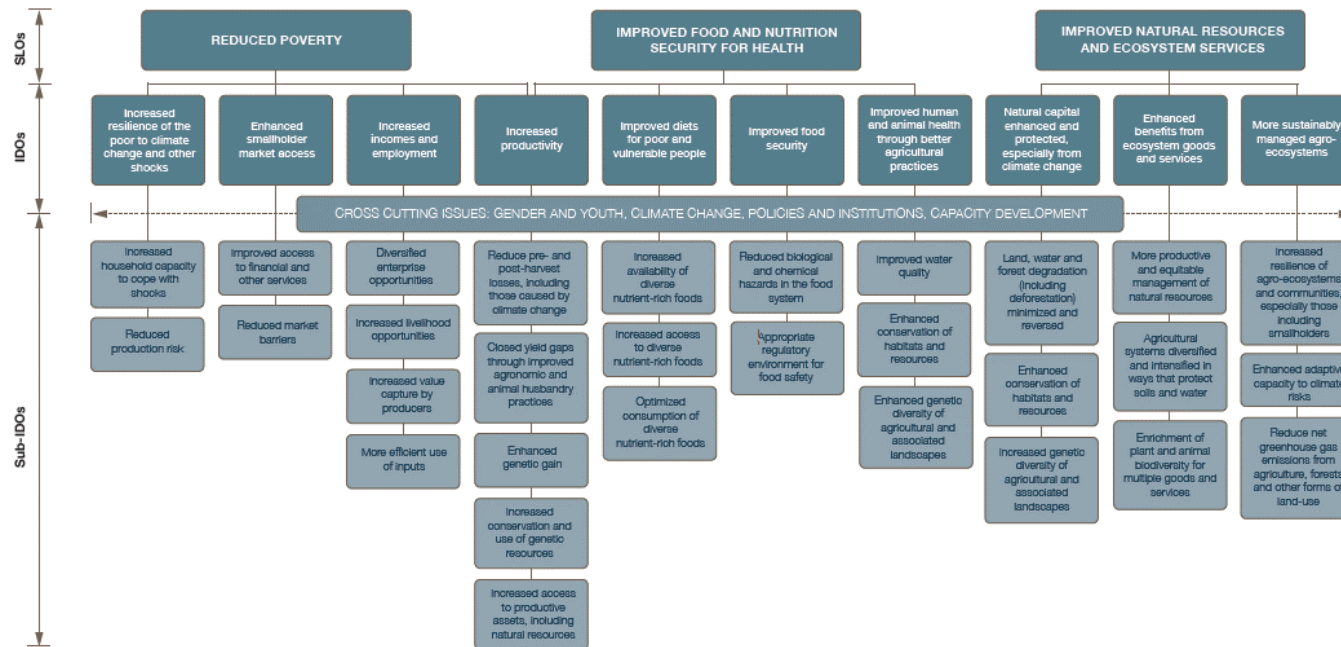
Operationalising the science strategy

- Multi-disciplinary project teams
- Pipeline of discovery to delivery
- Target of 40% of portfolio on biosciences
- Mixed portfolio of short and long term research
- Partnerships for research
- Partnerships for impact
- New Impact at Scale Program



Theory of change

FIGURE 2: CGIAR RESULTS FRAMEWORK

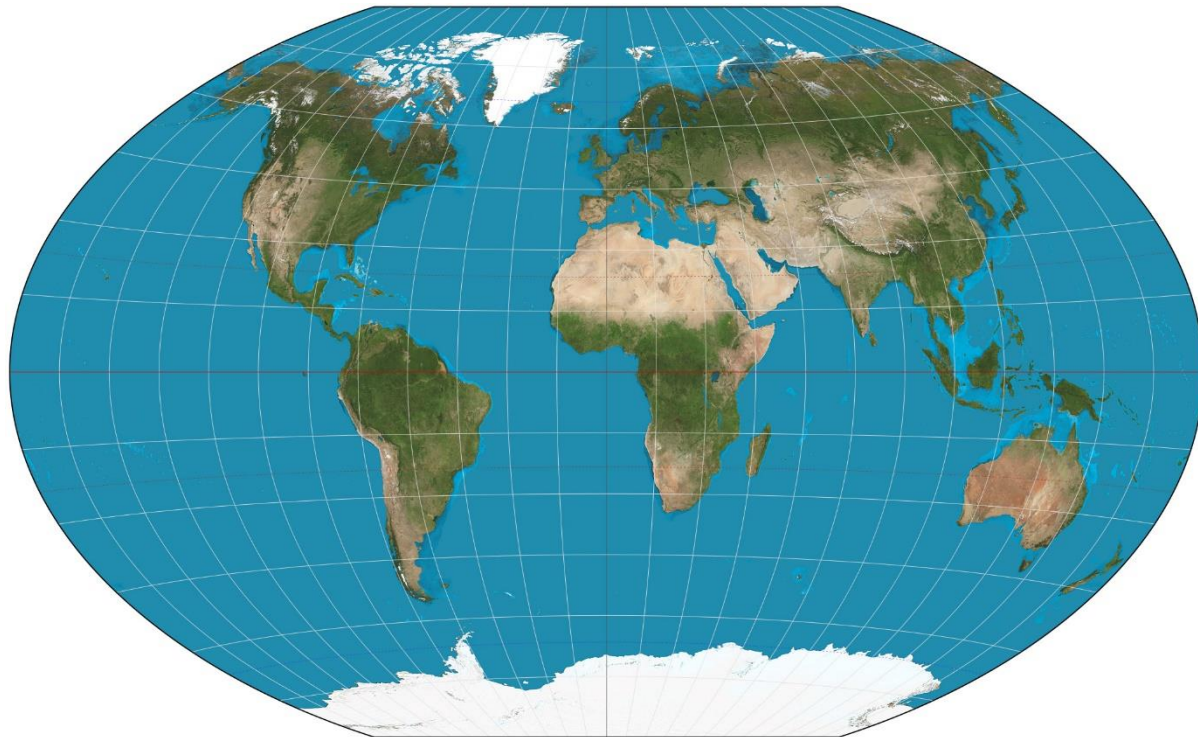


Deliver through the CRPs' theories of change:

- Global public goods
- Local and regional public goods

Regional strategies

Each region will have a strategy reflecting the regional context, opportunities and challenges



better lives through livestock

ilri.org

ILRI thanks all donors and organizations who globally supported its work through their contributions to the **CGIAR system**

Patron: Professor Peter C Doherty AC, FAA, FRS

Animal scientist, Nobel Prize Laureate for Physiology or Medicine–1996

Box 30709, Nairobi 00100 Kenya
Phone +254 20 422 3000
Fax +254 20 422 3001
Email ilri-kenya@cgiar.org

ilri.org
better lives through livestock
ILRI is a CGIAR research centre

Box 5689, Addis Ababa, Ethiopia
Phone +251 11 617 2000
Fax +251 11 667 6923
Email ilri-ethiopia@cgiar.org

ILRI has offices in East Africa • South Asia • Southeast and East Asia • Southern Africa • West Africa



This presentation is licensed for use under the Creative Commons Attribution 4.0 International Licence.