

Update on ILRI in West Africa

Tunde Omole

*ILRI Institute Planning Meeting
4-7 October 2016*

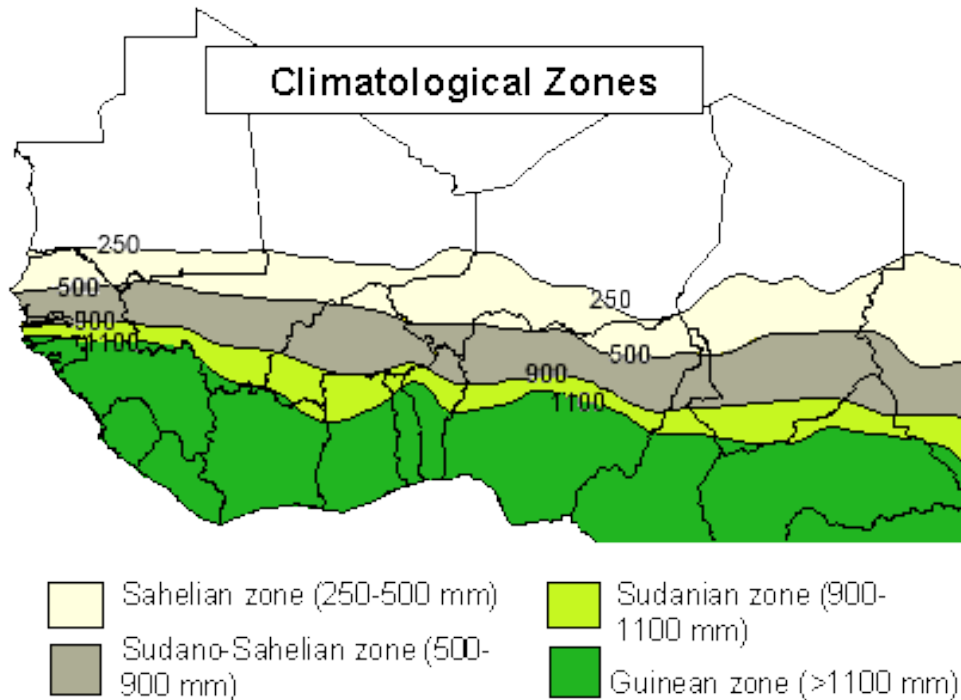


Livestock sector in West Africa

- West Africa is home to a large livestock population (66 million heads of cattle, 228 million sheep and goats, 14 million pigs, and 550 million poultry)
- About 100 million poor livestock keepers – 36% of West Africa's population
- 80% in mixed crop livestock / agro-pastoral systems
- Multiple roles of livestock: food production; income, saving account; soil fertility; power for cropping and transport
- Smallholders produce at least 50% of the regions' domestic livestock products
- Mostly extensive with low external-inputs use
- Livestock products trade deficits; High imports of livestock products especially milk and dairy products

Livestock sector in West Africa

Livestock production systems follow agro-ecological gradients



- Arid zone: Mainly pastoral system with pockets of agro-pastoral system
- Semi-arid zone: Mainly agro-pastoral and mixed crop-livestock systems, and peri-urban livestock system
- Sub-humid/humid zone: Mixed crop-livestock systems and peri-urban system
- Coastal zone: Peri-urban system; small scale commercial poultry production



ILRI in West Africa

Location:

- Ouagadougou, Burkina Faso – Regional hub
- Office in Ibadan, Nigeria and Bamako, Mali
- Staff in Ghana (1 IRS) and Senegal (1 IRS)

ILRI in West Africa

Opportunities

- Taking research to scale e.g. USAID Mali Livestock Scaling Programme
- Making a difference to poor livestock farmers as livestock contribute significantly to the livelihoods of about 80% of the rural population
- Strong existing network of research and development partners due to long presence in the region
- Renewed donors' interest in livestock development in the region e.g. World Bank project on Pastoralism in the Sahel; USAID Resilience in the Sahel etc
- Strengthening capacity of national partners in livestock research

ILRI in West Africa

Challenges

- Lack of critical mass in terms of staffing and dispersed staff (currently 7 IRS in 5 countries with 3 IRS leaving by the end of the year)
- Donors' priorities on livestock development issues and less on research
- Expertise to respond to development issues
- Visibility – ILCA is still better known than ILRI in the region due to strong capacity development programme of ILCA
- Changing the perception of national partners who still see ILRI as a donor

Current Research Areas

- Sustainable intensification of smallholder mixed crop-livestock systems for improved livelihoods, and food and nutrition security – Africa RISING, FtF SIIL Burkina Faso, USAID Mali Livestock Technology Scaling Programme
- Small ruminant value chain development in Burkina Faso – Livestock & Fish
- Livestock and water interactions – IFAD/EC Managing Water for Food (IWMI-led), WLE Biomass project
- Assessment of feed resources and feed-related interventions – Feed and Forage, Livestock & Fish
- Participatory analysis of evolution of pastoral & agro-pastoral systems including natural resource governance and ecosystem services –

West Africa: The land of opportunities



Thanks

better lives through livestock

ilri.org

ILRI thanks all donors and organizations who globally supported its work through their contributions to the **CGIAR system**

Patron: Professor Peter C Doherty AC, FAA, FRS

Animal scientist, Nobel Prize Laureate for Physiology or Medicine–1996

Box 30709, Nairobi 00100 Kenya
Phone +254 20 422 3000
Fax +254 20 422 3001
Email ilri-kenya@cgiar.org

ilri.org
better lives through livestock
ILRI is a CGIAR research centre

Box 5689, Addis Ababa, Ethiopia
Phone +251 11 617 2000
Fax +251 11 667 6923
Email ilri-ethiopia@cgiar.org

ILRI has offices in East Africa • South Asia • Southeast and East Asia • Southern Africa • West Africa



This presentation is licensed for use under the Creative Commons Attribution 4.0 International Licence.