

Recognising African Swine Fever

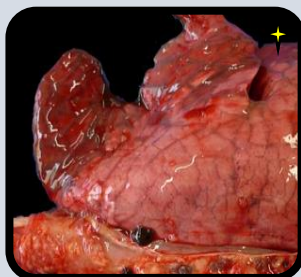
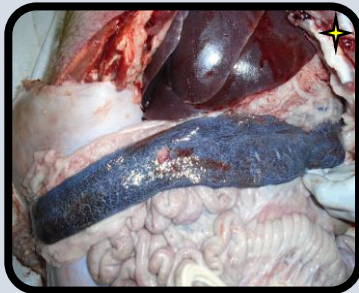
A guide for pork butchers

REDDENING OF THE SKIN

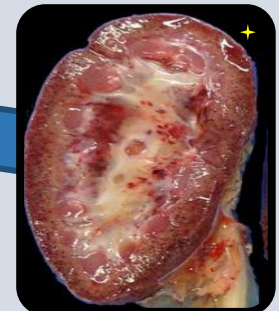
Easily Torn or Broken Spleen



Bloody Lymph Nodes



Fused or Joined Areas in Lungs



Small Blood Spots on Kidneys



Poor meat quality

There is NO CURE, NO VACCINE and NO TREATMENT!

How is it transmitted?

- Direct contact with sick animals
- Vehicles
- People or dogs
- Infected pork



What can I do?

- Inspect pigs before selling or purchasing
- Report sick pigs to area vet or DVO
- Do **NOT** buy, sell or slaughter sick pigs
- Bury or burn offal
- Properly destroy and bury carcasses of sick pigs
- Use disinfectants

Images: Michel Dione (ILRI) and <http://www.cresa.cat/blogs/sesc/lesions-de-pesta-porquina-africana/?lang=en>