




3-31-2014

# Promoting College Access for All Students

Laura W. Perna

*University of Pennsylvania*, [lperna@gse.upenn.edu](mailto:lperna@gse.upenn.edu)

Follow this and additional works at: [http://repository.upenn.edu/gse\\_pubs](http://repository.upenn.edu/gse_pubs)

 Part of the [Accessibility Commons](#), [Education Economics Commons](#), [Gender Equity in Education Commons](#), [Higher Education Commons](#), and the [Higher Education Administration Commons](#)

---

## Recommended Citation

Perna, L. W. (2014). Promoting College Access for All Students. *Leading the Way Compact Forum*, Retrieved from [http://repository.upenn.edu/gse\\_pubs/422](http://repository.upenn.edu/gse_pubs/422)

Presentation slides from a lecture given at the West Virginia Higher Education Consortium.

This paper is posted at ScholarlyCommons. [http://repository.upenn.edu/gse\\_pubs/422](http://repository.upenn.edu/gse_pubs/422)  
For more information, please contact [repository@pobox.upenn.edu](mailto:repository@pobox.upenn.edu).

---

# Promoting College Access for All Students

## **Disciplines**

Accessibility | Education | Education Economics | Gender Equity in Education | Higher Education | Higher Education Administration

## **Comments**

Presentation slides from a lecture given at the West Virginia Higher Education Consortium.

# Promoting College Access For All Students

Presentation for the Leading the Way Compact Forum  
West Virginia Higher Education Commission

Laura W. Perna

[lperna@gse.upenn.edu](mailto:lperna@gse.upenn.edu)

@lauraperna1

March 31, 2014



# Improving Educational Attainment Is One of the Most Pressing Issues of Our Time

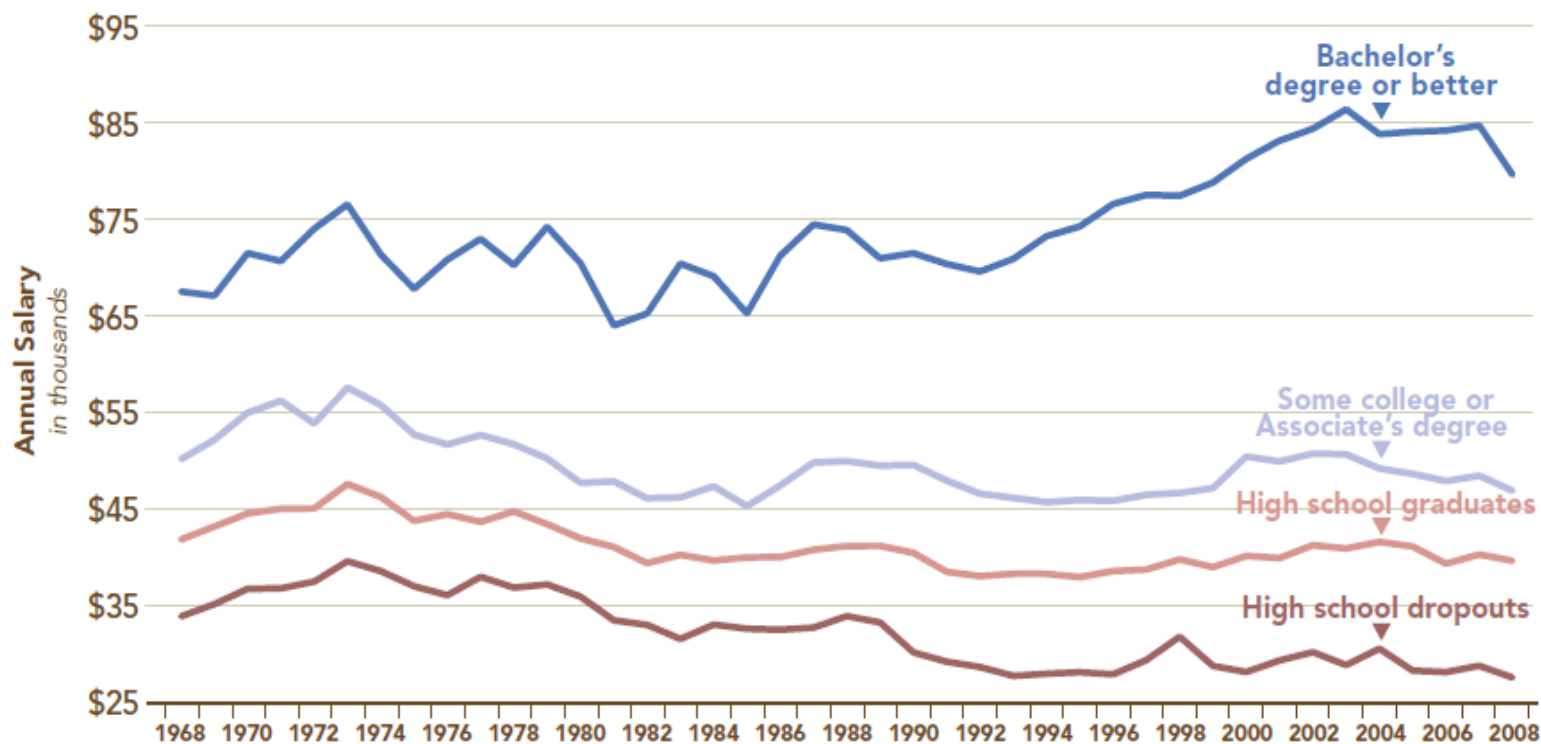


# Higher Education Is Increasingly Important To Individual AND Societal Well-Being

## Salaries Increase with Educational Attainment

Wage premium by education. Compared to high school graduates, holders of Bachelor's degrees and better have earned a substantial wage premium since the 1990s. (makes no control for full-time or full-year status of workers)

Source: Authors' analysis of March CPS data, various years

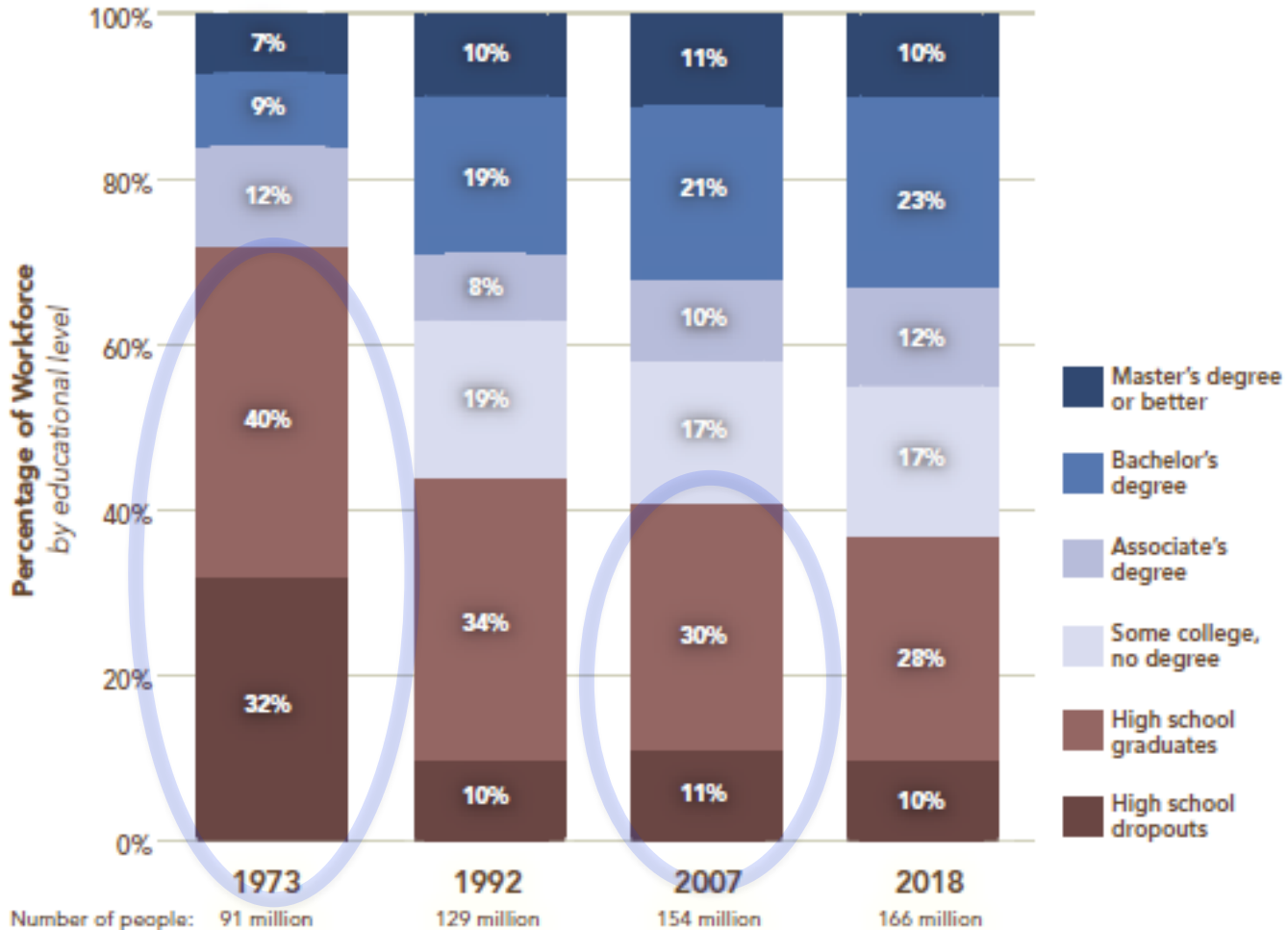


Source: Carnevale, A., Smith, N., & Strohl, J. (2010). *Help wanted*. Washington, DC: Georgetown Center for Workforce and the Economy.

# Available Jobs Increasingly Require Higher Education

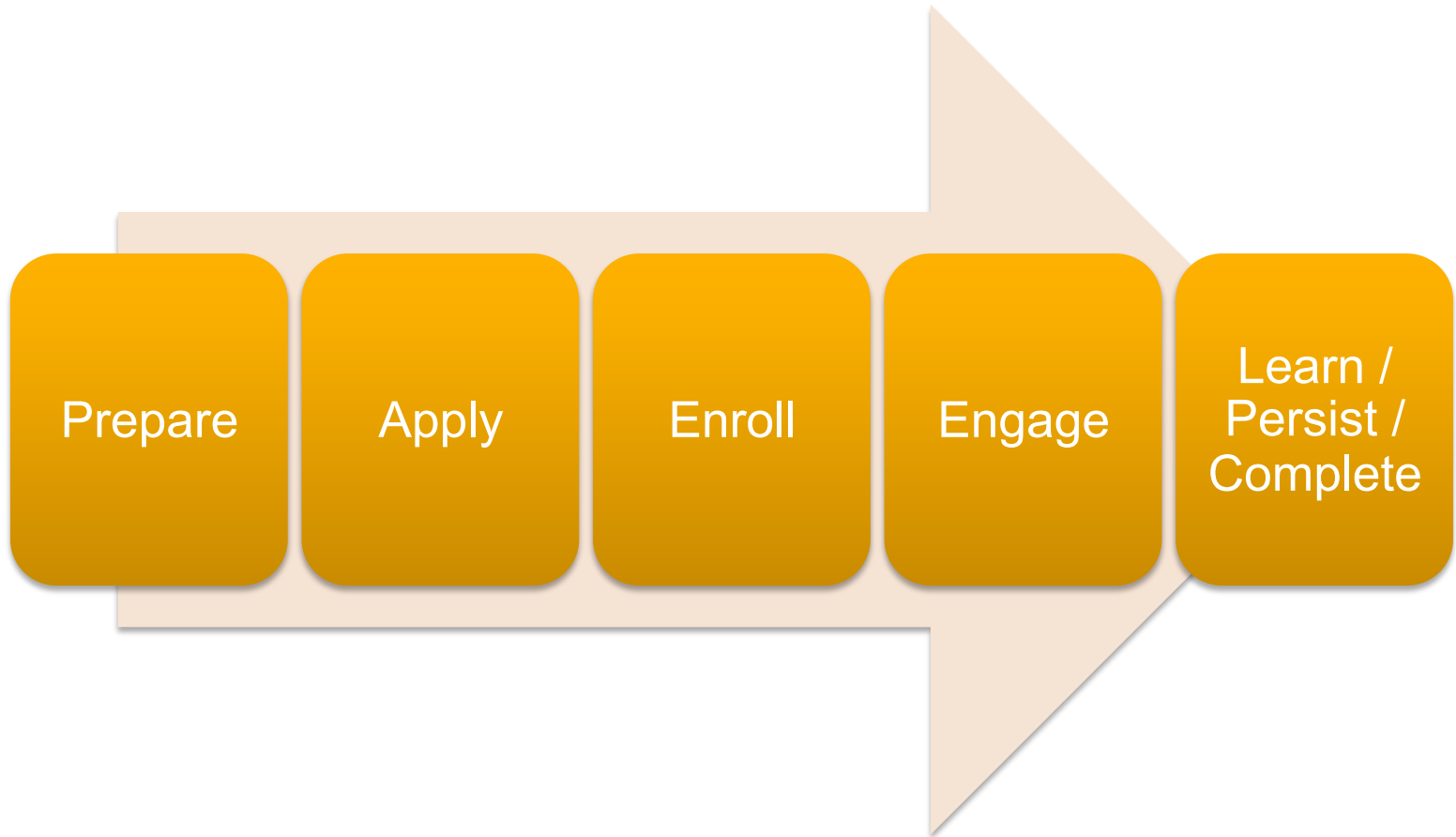
By 2018, about two-thirds of all employment will require some college education or better.

Source: Authors' analysis of March CPS data, various years; Center on Education and the Workforce forecast of educational demand to 2018



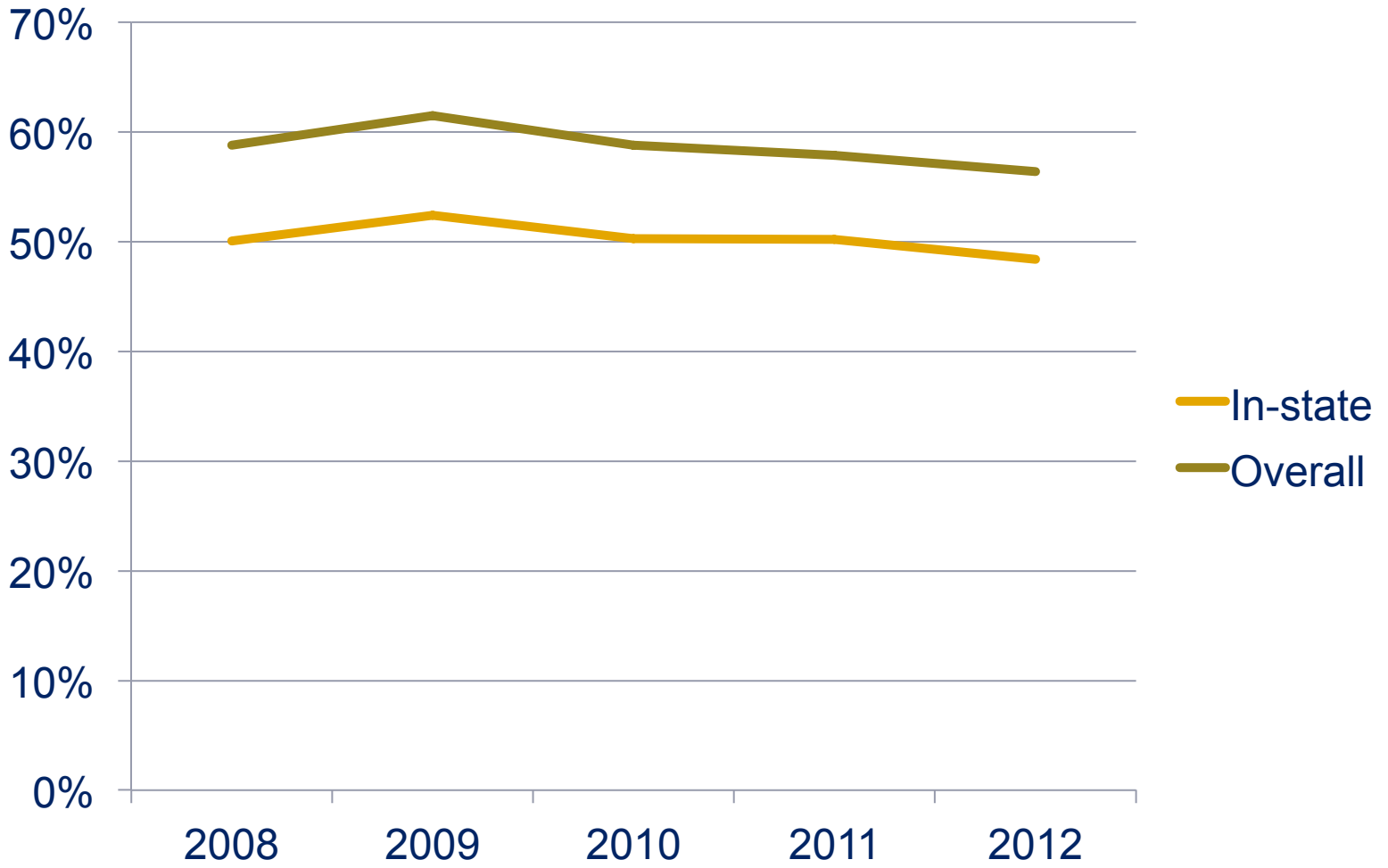
Source: Carnevale, A., Smith, N., & Strohl, J. (2010). *Help wanted*. Washington, DC: Georgetown Center for Workforce and the Economy.

# Educational Attainment is the Result of A Longitudinal Process





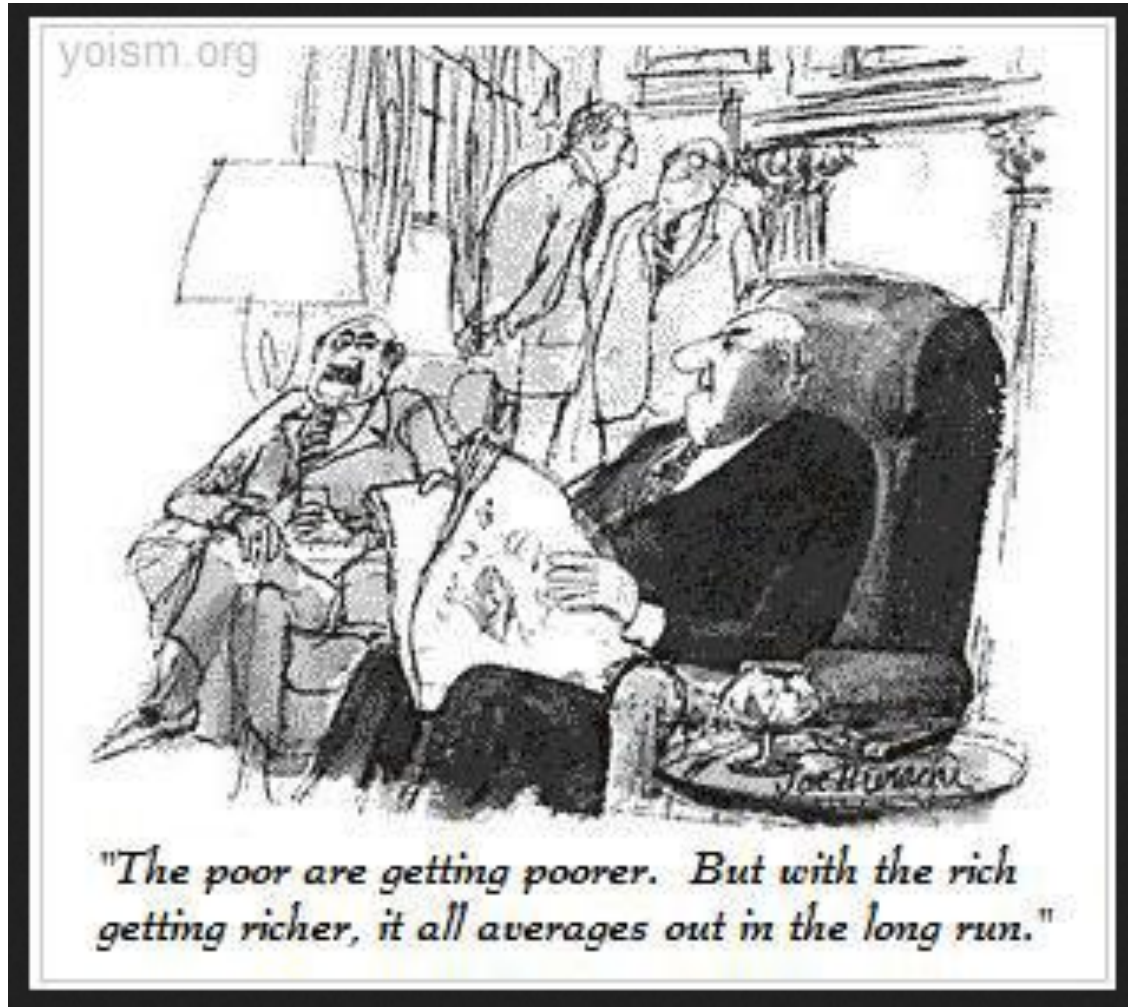
# College Enrollment Rates of Recent High School Graduates Are Declining in West Virginia



Source: *West Virginia Report Card 2013*.

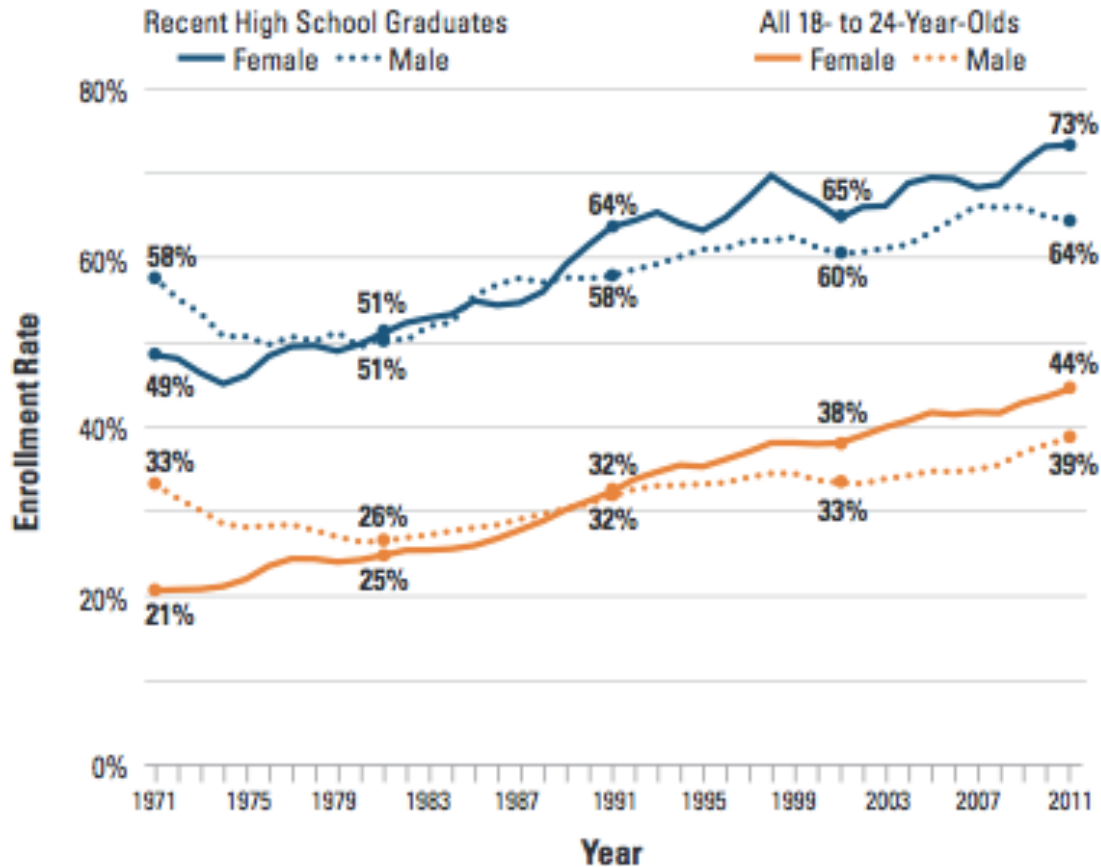


# Attention Only to the Average Masks Differences Across Groups



# College Enrollment Rates Are Higher for Women than Men

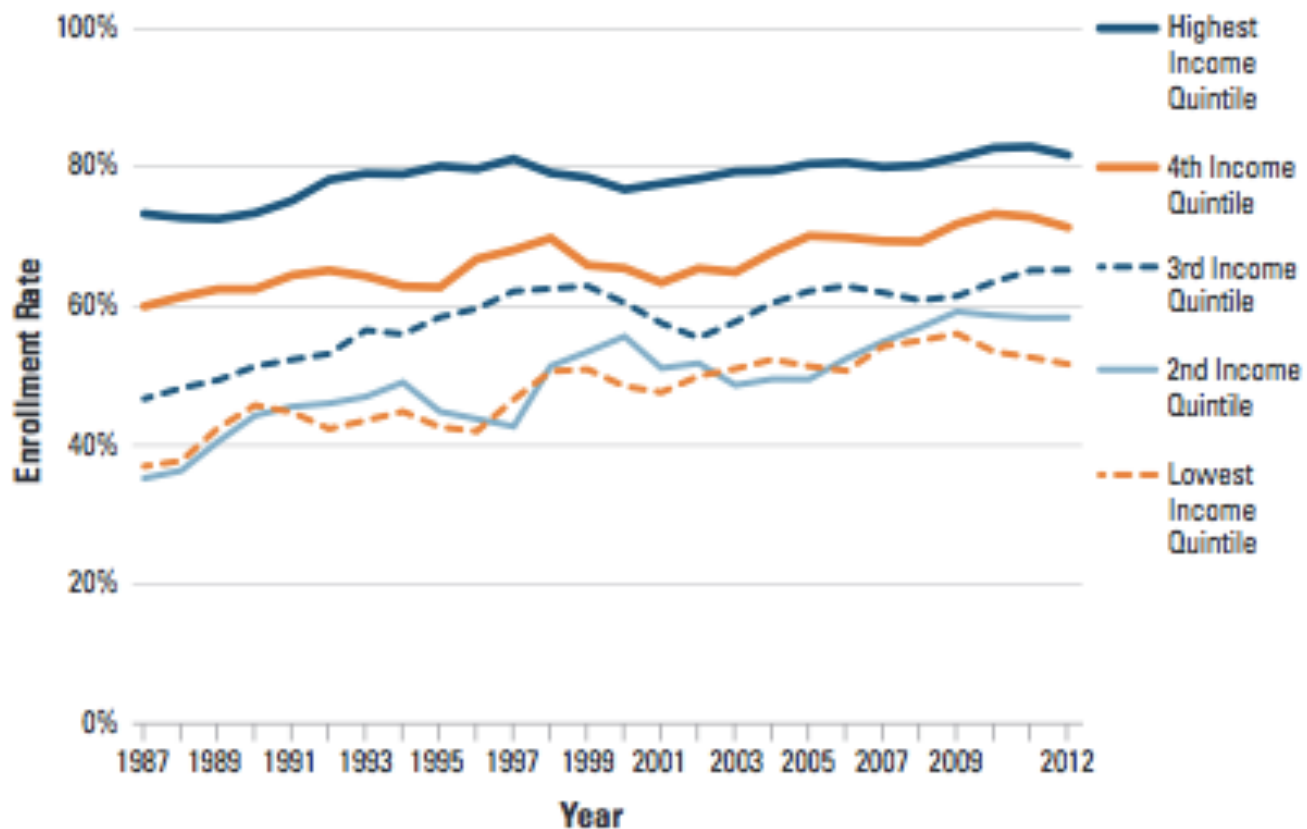
Postsecondary Enrollment Rates of Recent High School Graduates and of All 18- to 24-Year-Olds by Gender, 1971 to 2011



Source: Baum, S., Ma, J., & Payea, K. (2013). *Education Pays*. Washington, DC: College Board.

# College Enrollment Rates Increase with Family Income

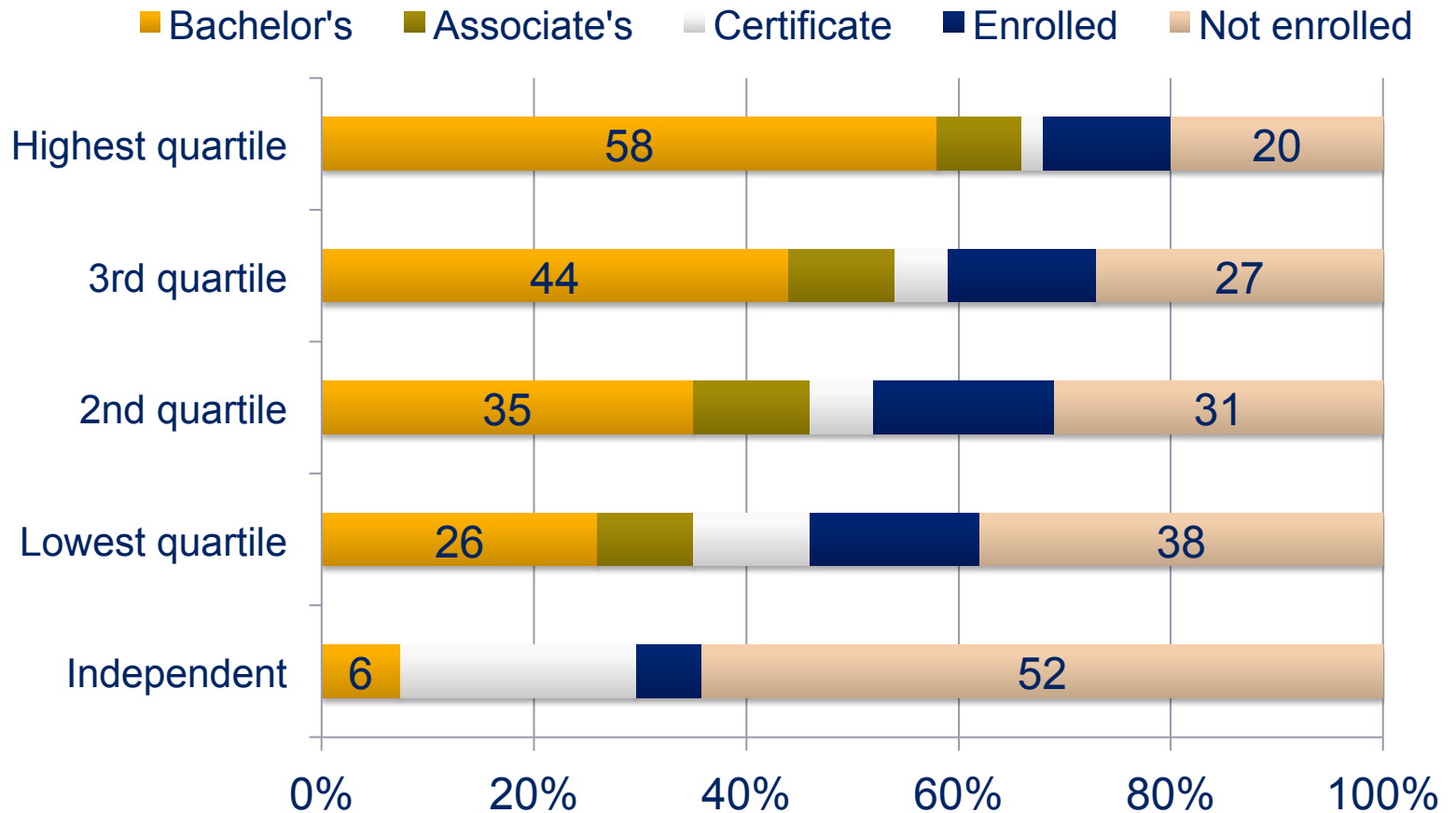
Postsecondary Enrollment Rates of Recent High School Graduates by Family Income, 1987 to 2012



Source: Baum, S., Ma, J., & Payea, K. (2013). *Education Pays*. Washington, DC: College Board.

# Among Those Who Enroll: Completion Rates Increase With Family Income

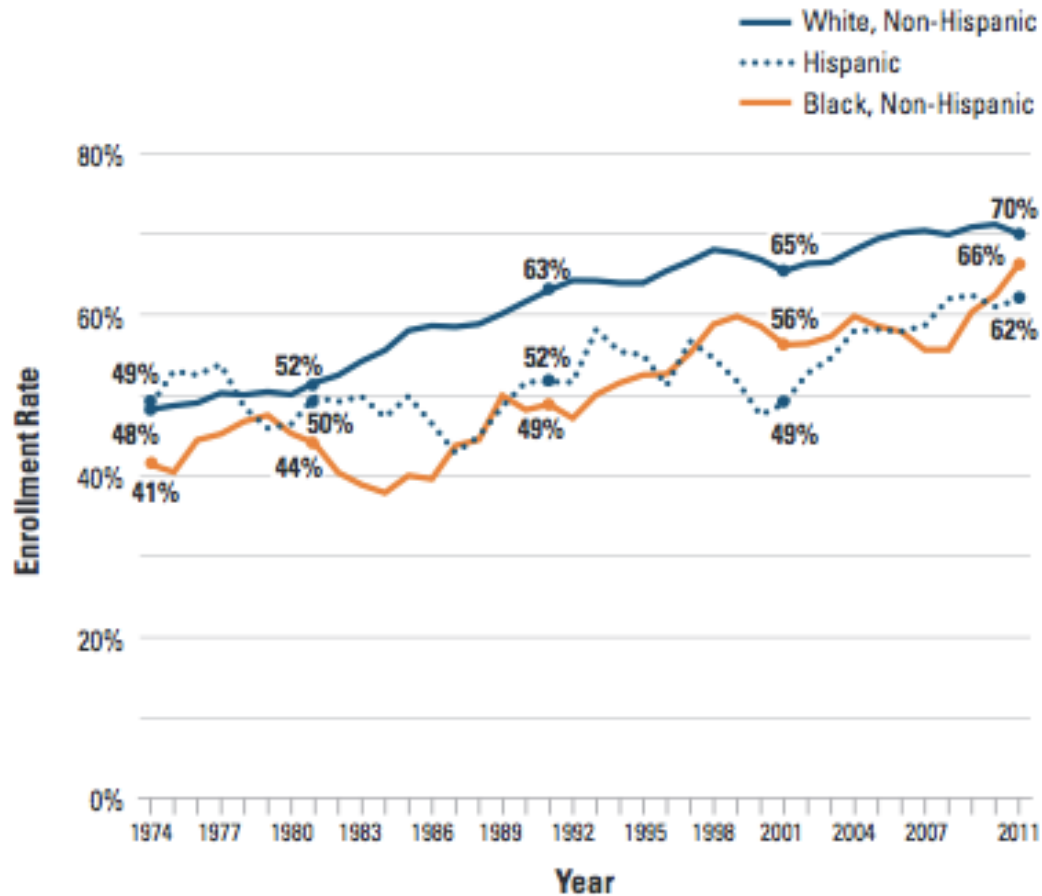
Outcomes by Family Income Five Years After First Enrolling, 2003-04



Source: Baum, S., Ma, J., & Payea, K. (2013). *Education Pays*. Washington, DC: College Board.

# College Enrollment Rates Vary Based on Race/Ethnicity

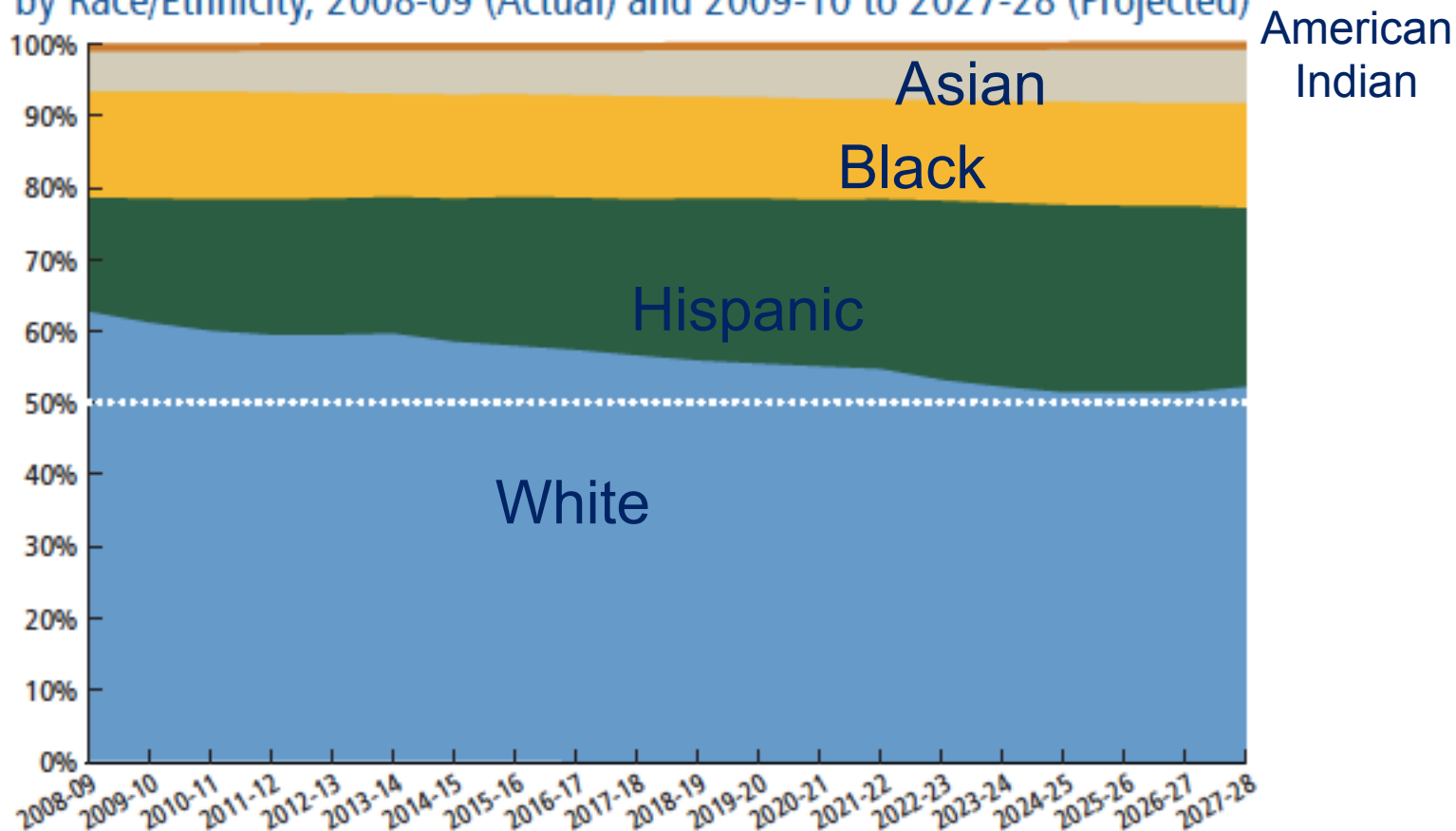
Postsecondary Enrollment Rates of Recent High School Graduates by Race/Ethnicity, 1974 to 2011



Source: Baum, S., Ma, J., & Payea, K. (2013). *Education Pays*. Washington, DC: College Board.

# Racial/Ethnic Diversity of the U.S. Population Is Increasing

Figure 3.5. Composition of U.S. Public High School Graduates, by Race/Ethnicity, 2008-09 (Actual) and 2009-10 to 2027-28 (Projected)

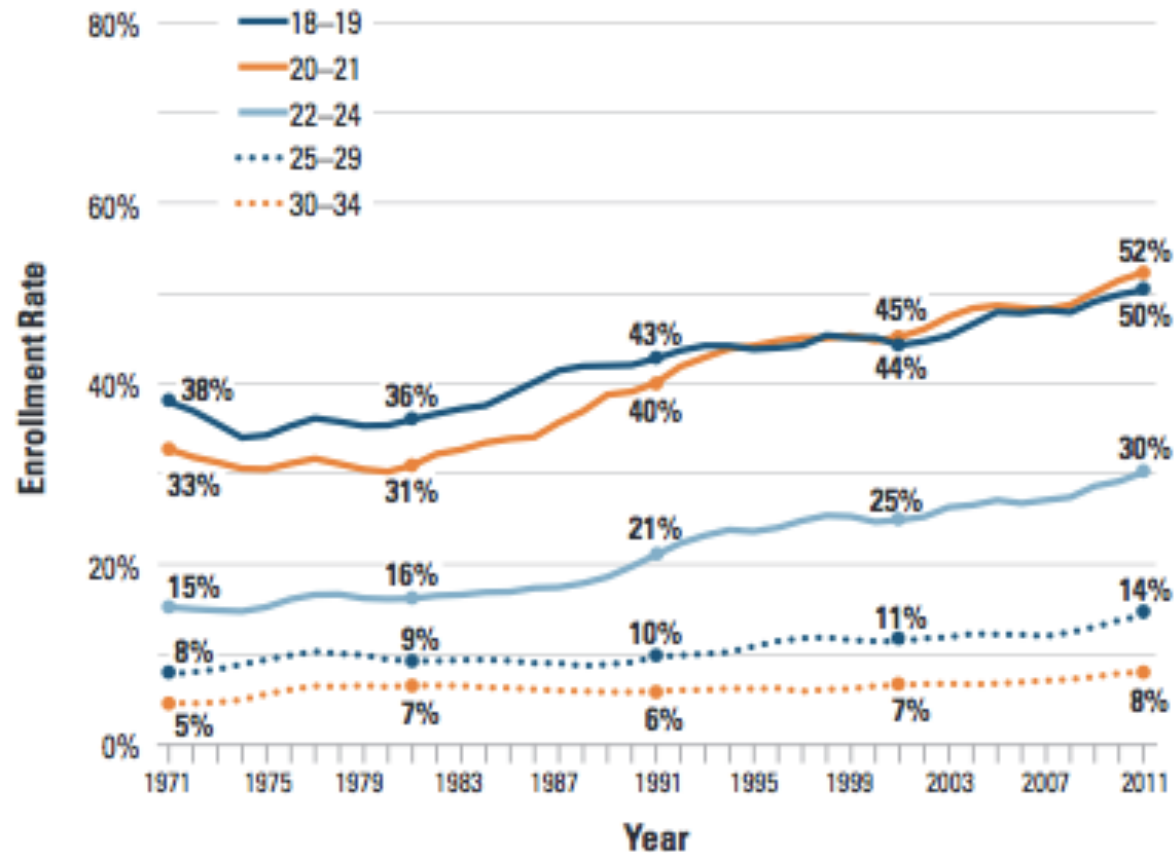


# What Do We Know About How to Improve College Access and Success?



# Most of What We Know is Based on “Traditional” Students

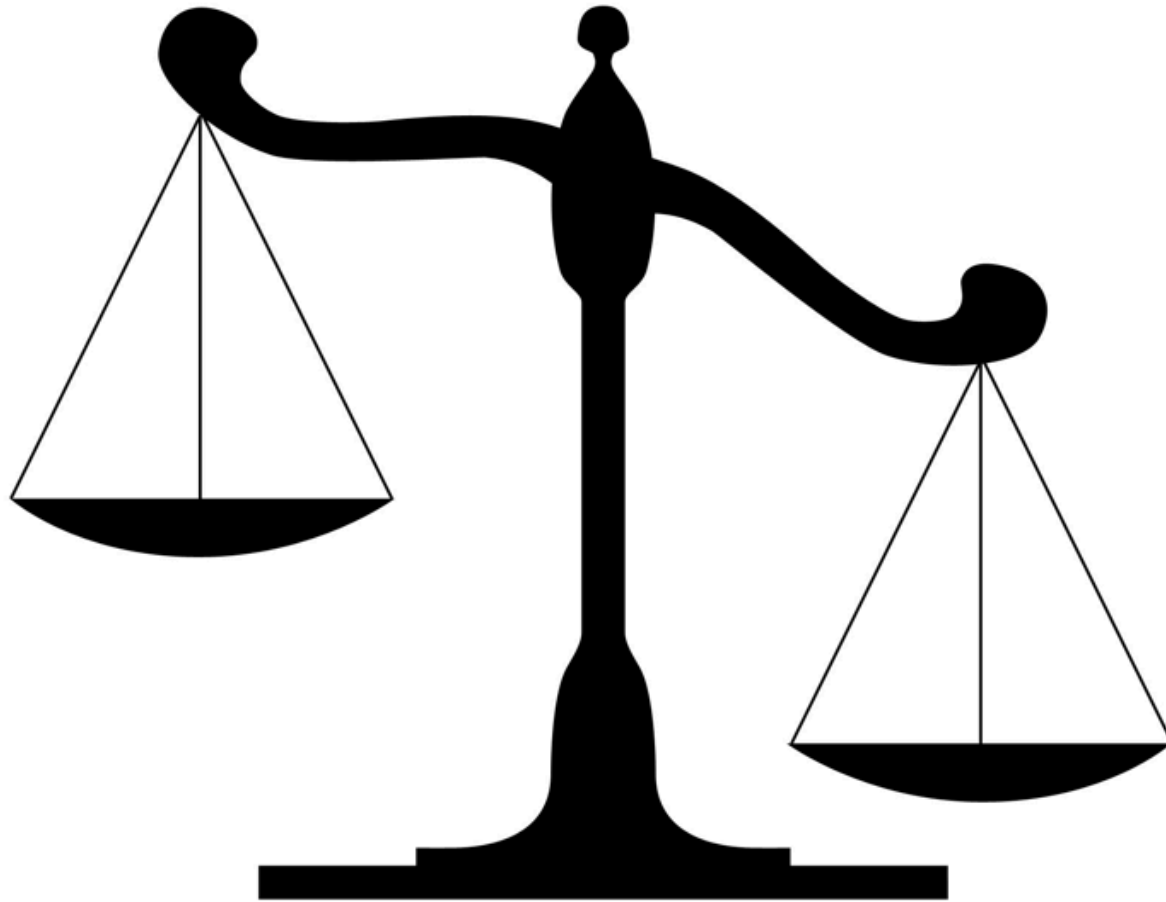
Postsecondary Enrollment Rates of All 18- to 34-Year-Olds by Age, 1971 to 2011



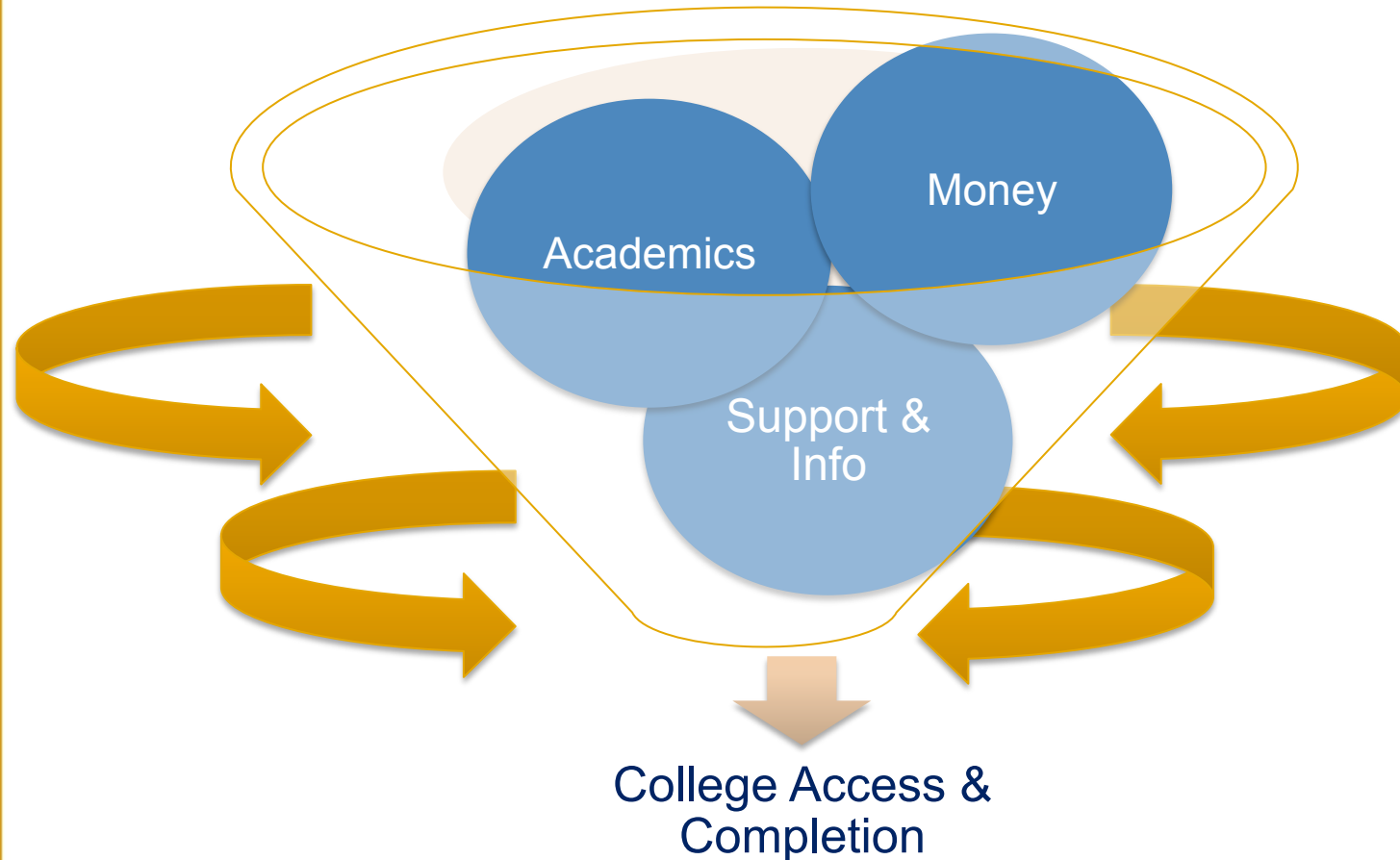
Source: Baum, S., Ma, J., & Payea, K. (2013). *Education Pays*. Washington, DC: College Board.



# The College Enrollment Decision: Students Weigh the Benefits and Costs

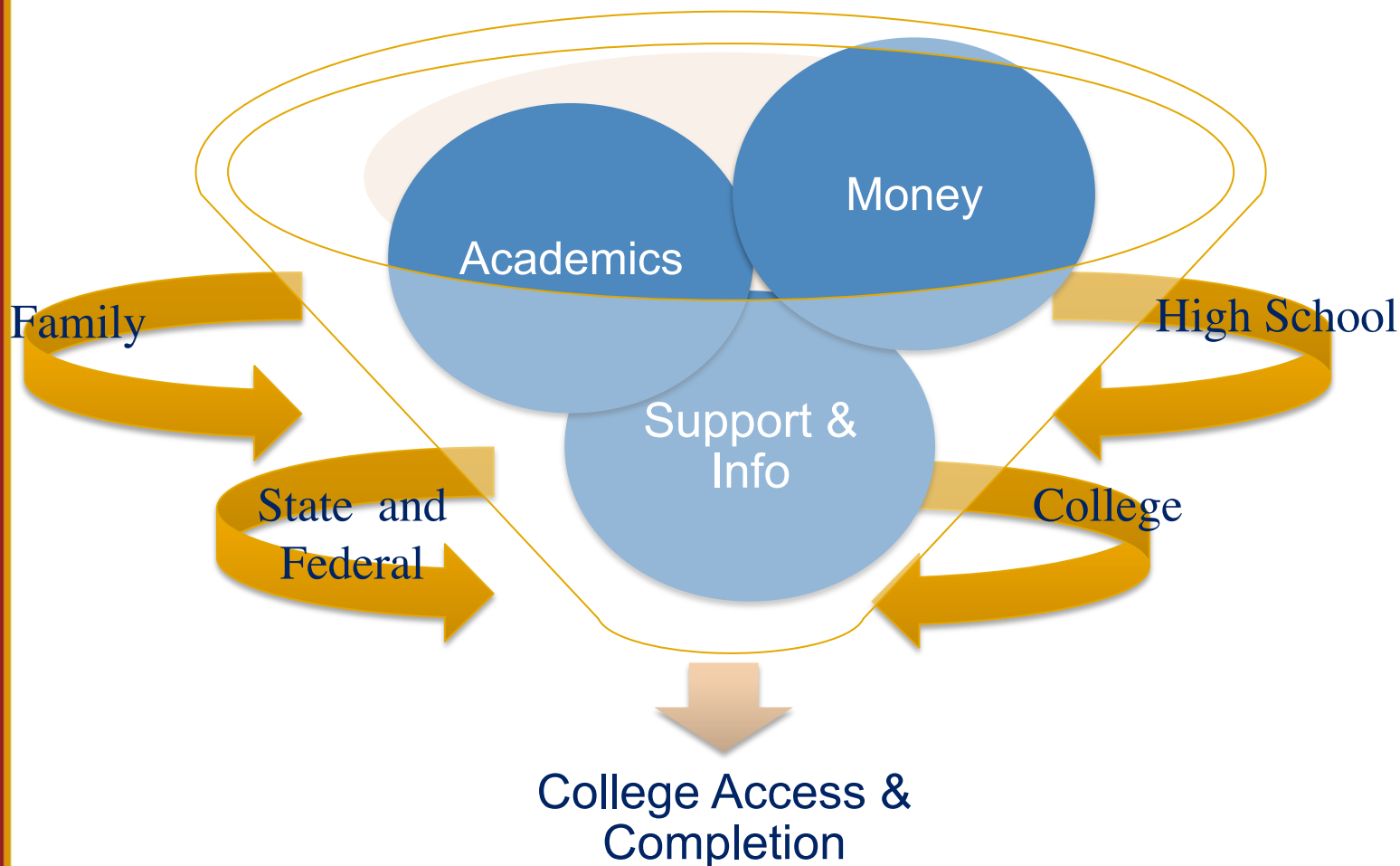


# Multiple Forces Limit and Promote Higher Education Attainment



Source: Derived from Perna, L. W. (2006). Studying college choice: A proposed conceptual model. In J. C. Smart (Ed.), *Higher Education: Handbook of theory and research*, Vol. XXI (pp. 99-157). Springer.

# Improving Higher Education Attainment Requires Attention to Context



Source: Derived from Perna, L. W. (2006). Studying college choice: A proposed conceptual model.

In J. C. Smart (Ed.), *Higher Education: Handbook of theory and research*, Vol. XXI .

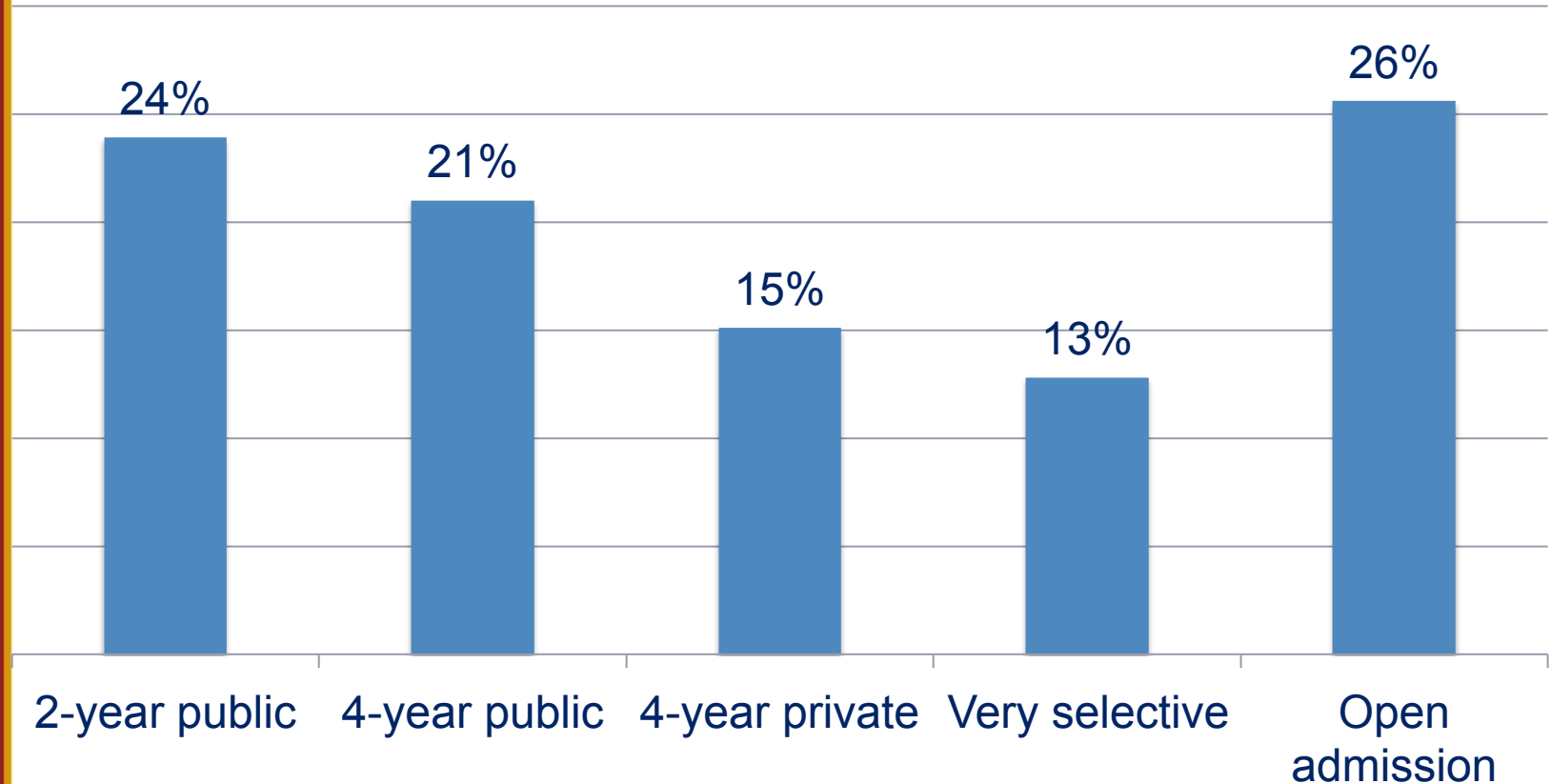
# Worrisome Trends

**WRONG  
WAY**



# Trend 1: Academic Readiness for College Is Often Inadequate

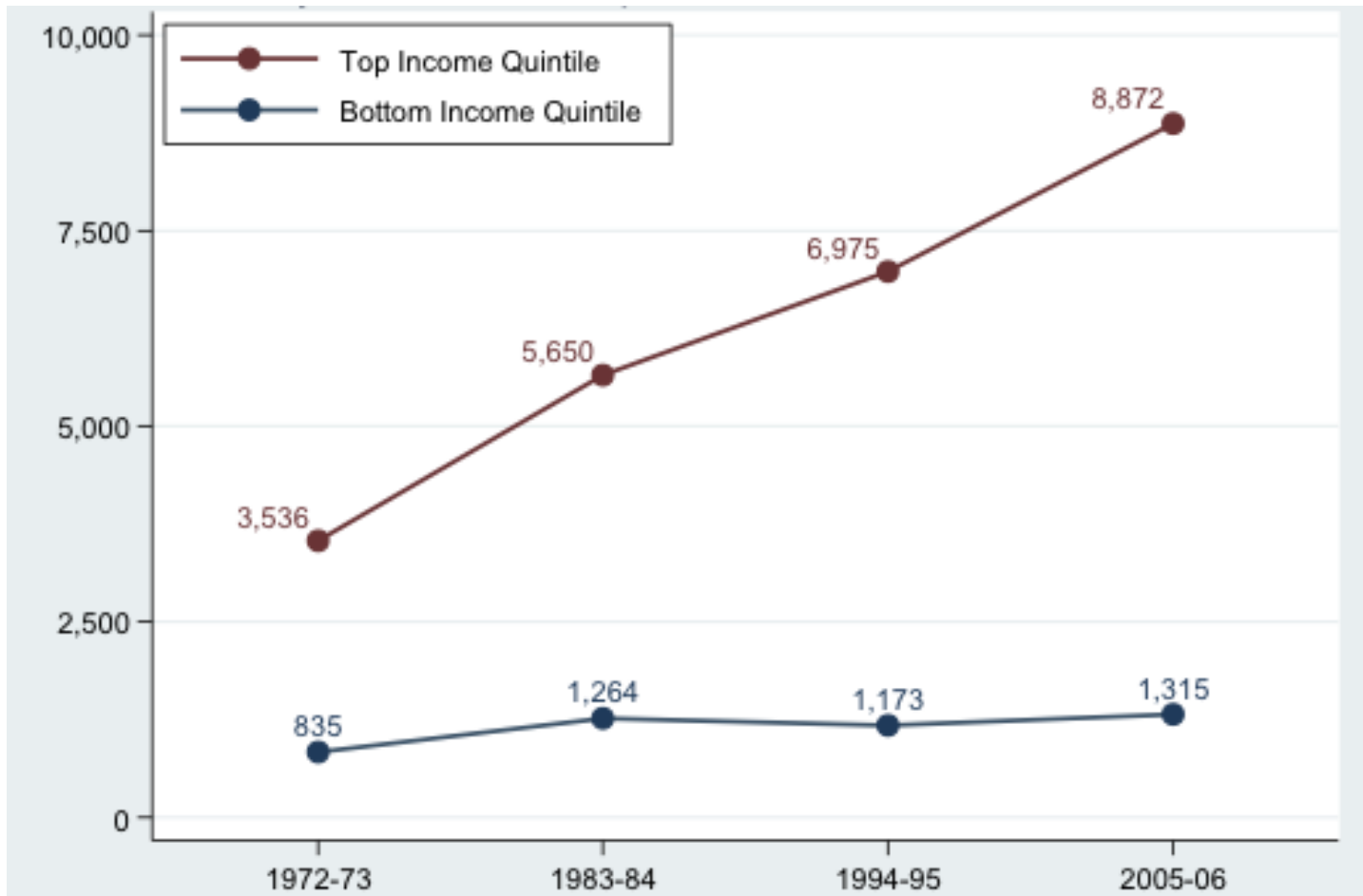
Percentage of First-Year Undergraduates Who Took  
At least one Remedial Course in 2007-08



Source: National Center for Education Statistics (2013, January). *First-year undergraduate remedial coursetaking*. Statistics in brief. Washington, DC: Author.

# Stratification of Academic Resources

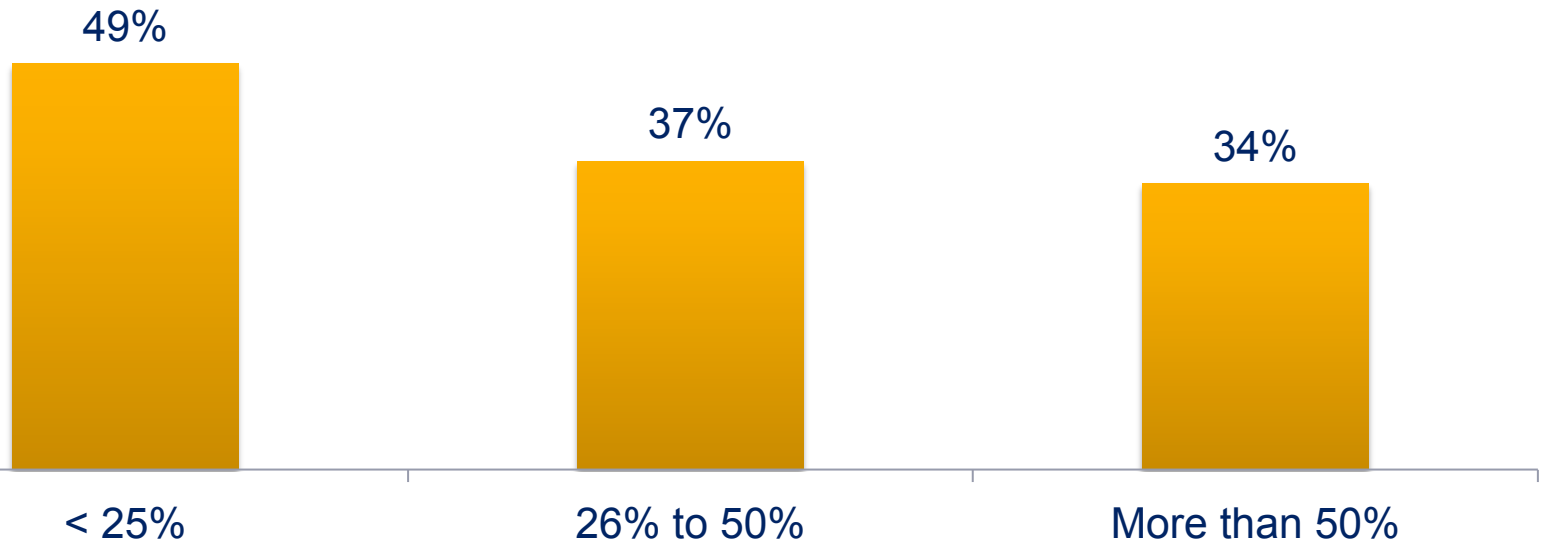
Family Enrichment Expenditures on Children: 1972 to 2002



Source: Reardon (2012, November). *Income, inequality, and educational outcomes: U.S. and international evidence*. Presentation at the University of Pennsylvania, Philadelphia, PA.

# Differential Access to Academic Resources In K-12 Education

Percentage of 2009 Public H.S. Graduates Who Earned Credits in Dual Credit, AP, or IB Courses



**% Students Eligible for  
Free/Reduced Lunch**

Source: NCES (2012). *Digest of Education Statistics 2011*.  
Washington, DC: Author.

# Potential Improvements in College Readiness?





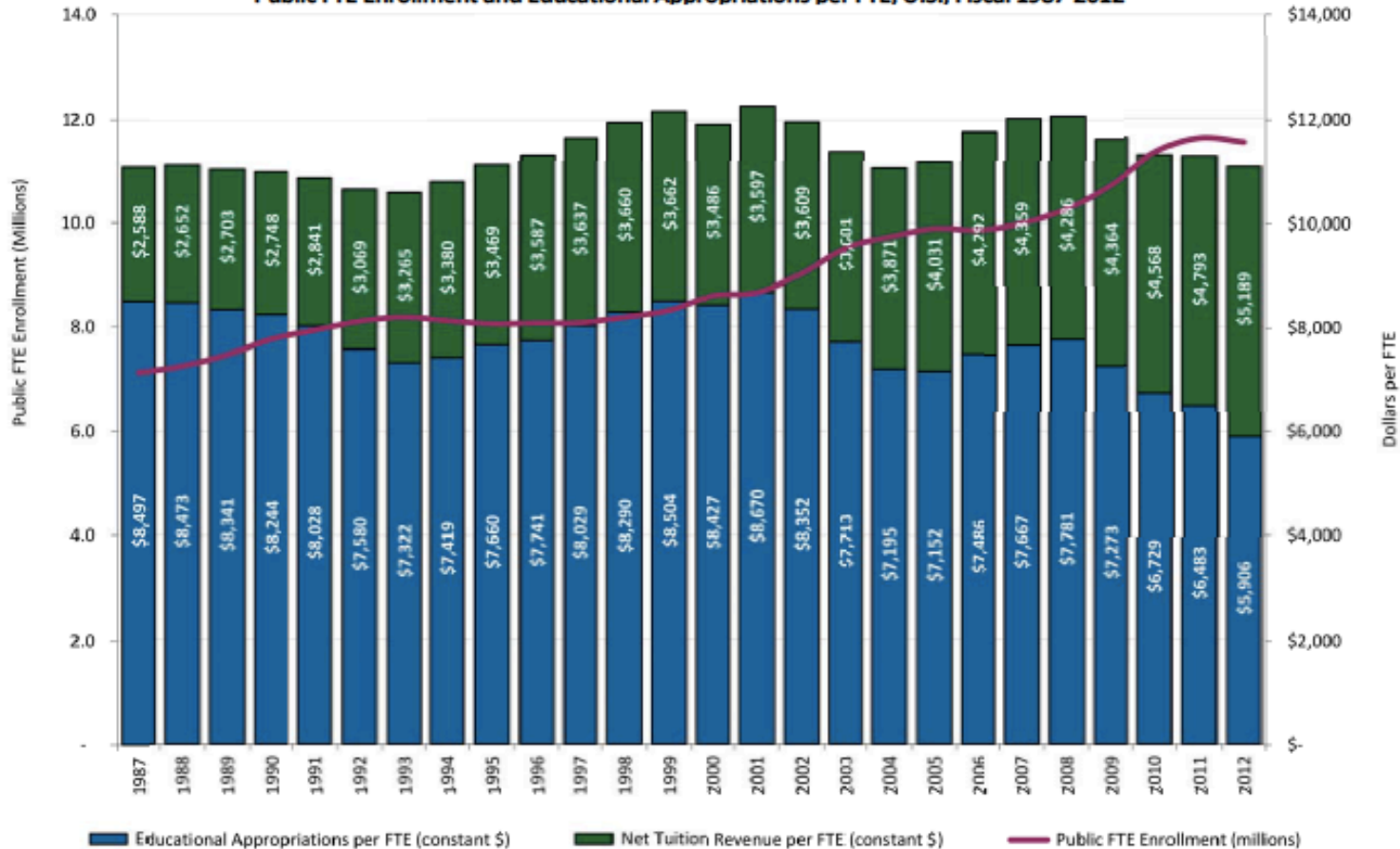
## Trend 2: Shifting Responsibility for Paying College Costs



# Increasing Privatization of Higher Education



**Figure 3**  
Public FTE Enrollment and Educational Appropriations per FTE, U.S., Fiscal 1987-2012



Note: Net tuition revenue used for capital debt service are included in the above figures.  
Constant 2012 dollars adjusted by SHEEO Higher Education Cost Adjustment (HECA).

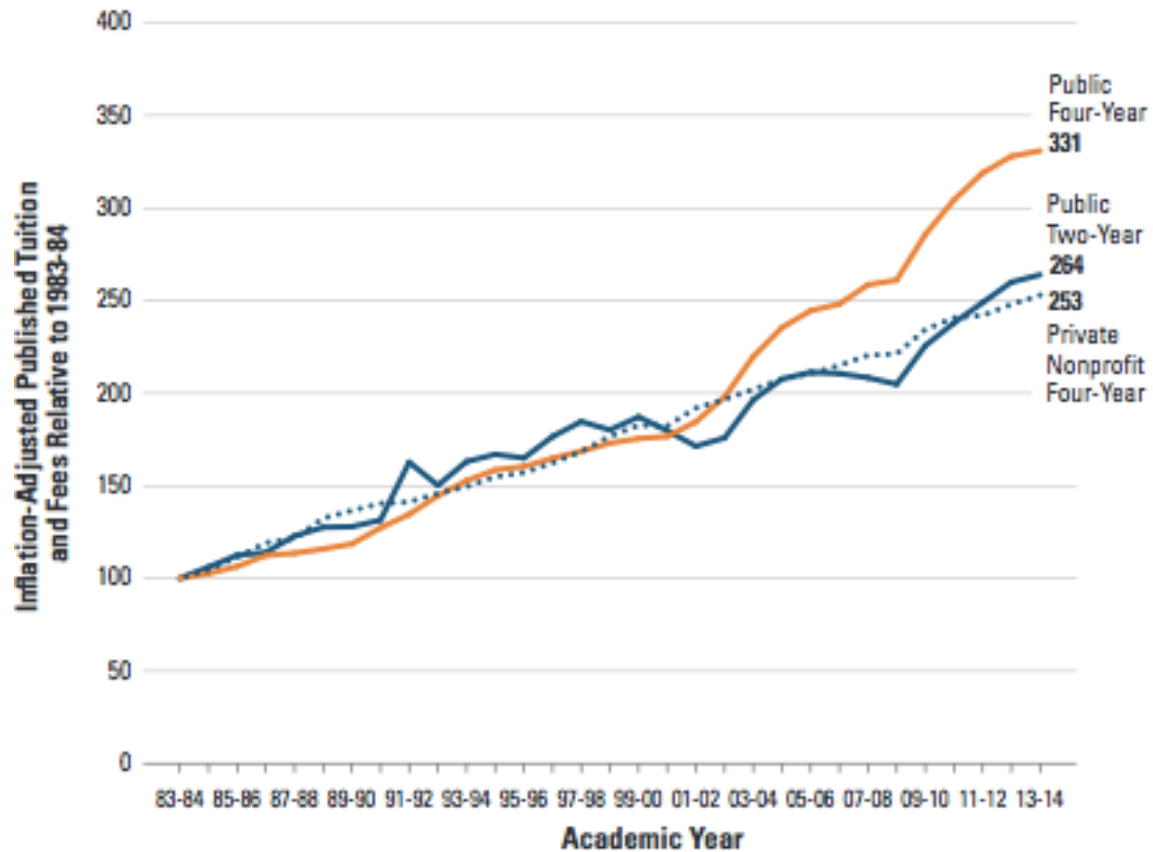
Note: Dollars adjusted by 2012 HECA, Cost of Living Adjustment, and Enrollment Mix Index.  
Source: State Higher Education Executive Officers. SHEF FY2012.



# Growth in Tuition and Fees

**FIGURE 5**

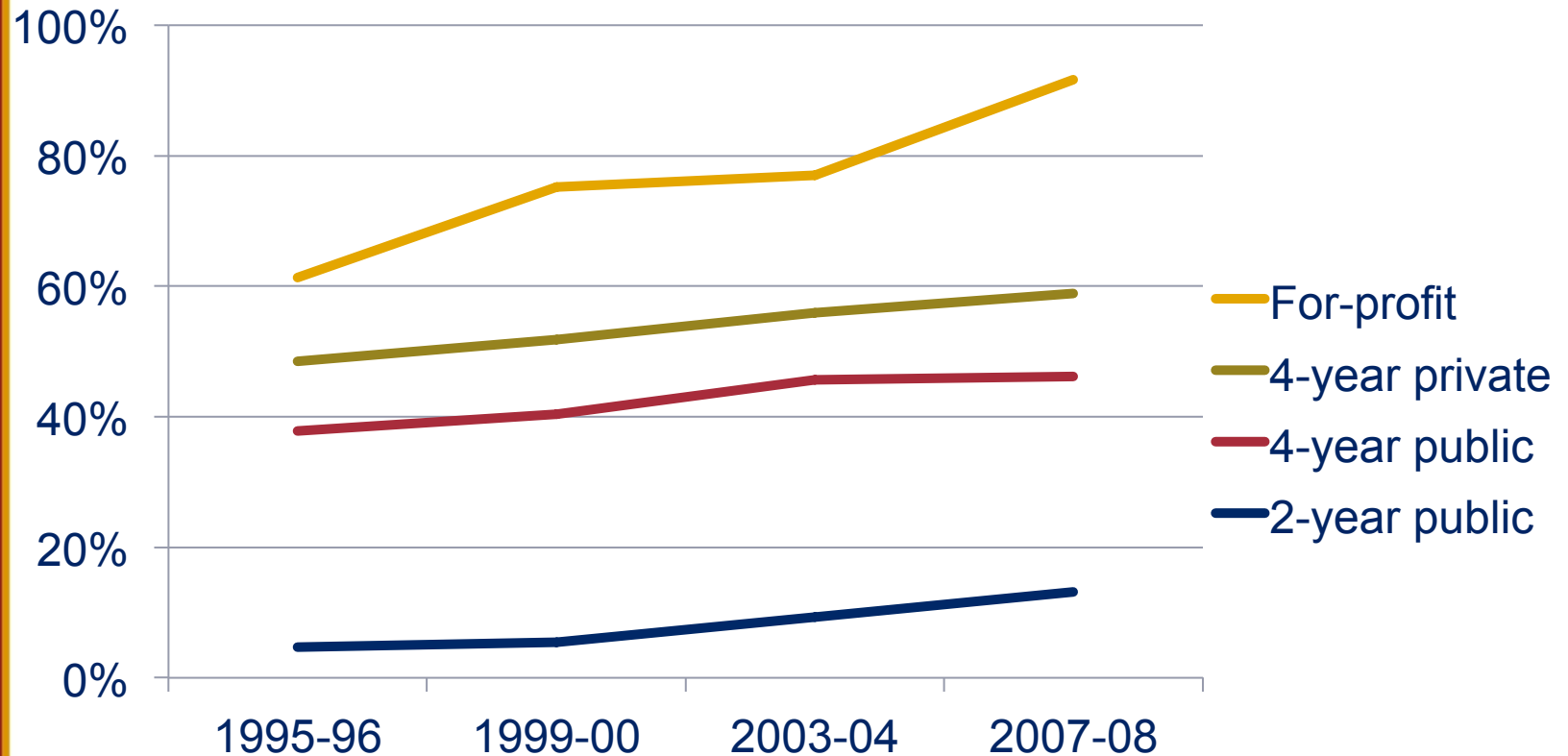
Inflation-Adjusted Published Tuition and Fees Relative to 1983-84, 1983-84 to 2013-14 (1983-84 = 100)



Source: College Board (2013). *Trends in College Pricing 2013*.

# Increasing Use of Loans To Pay College Costs

Percent of Undergraduates Borrowing: 1995-96 to 2007-08

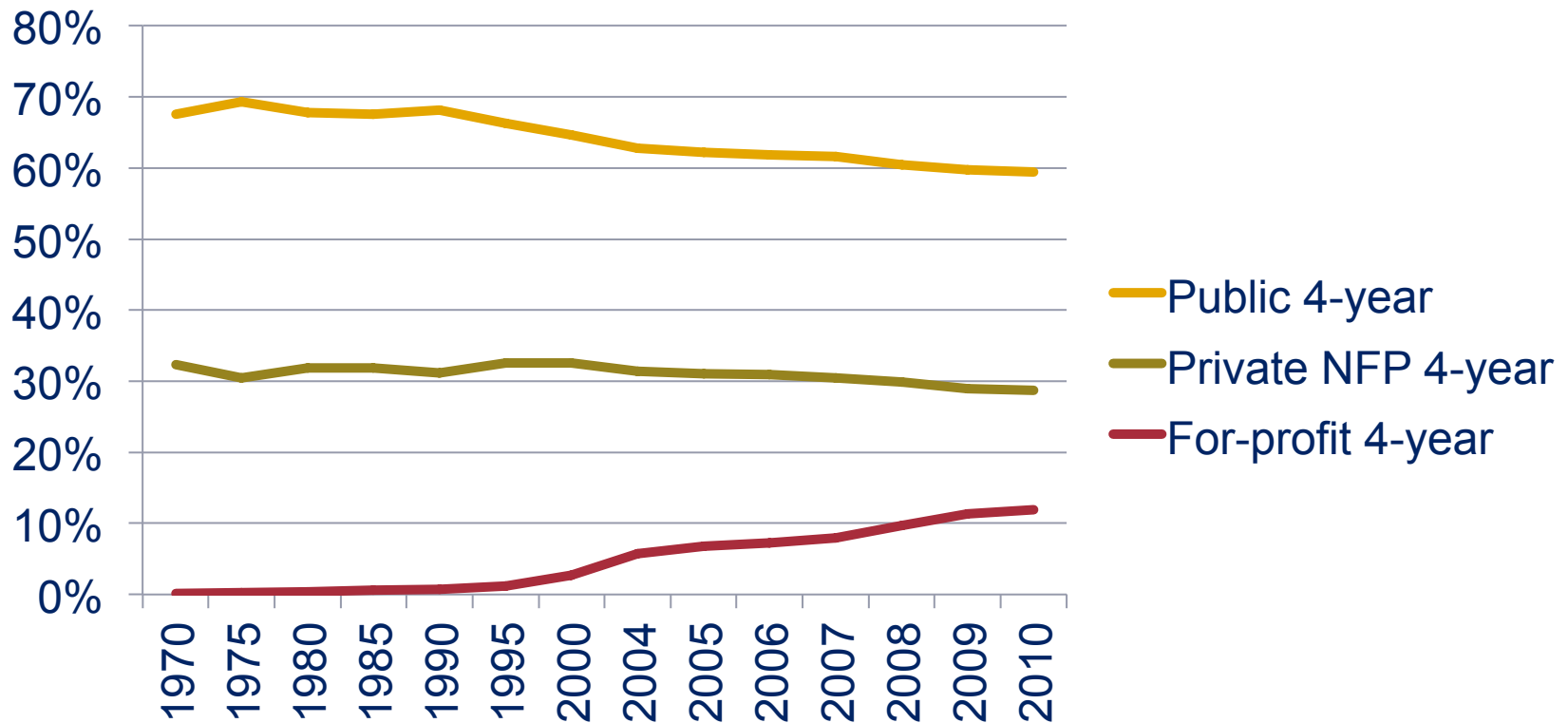


Source: National Center for Education Statistics (2011). *Trends in student financing of undergraduate education: Selected years*. Washington, DC: Author.



## Trend 3: Changing Higher Education Options

### Distribution of Total Enrollment in Four-Year Degree-Granting Institutions by Institutional Type

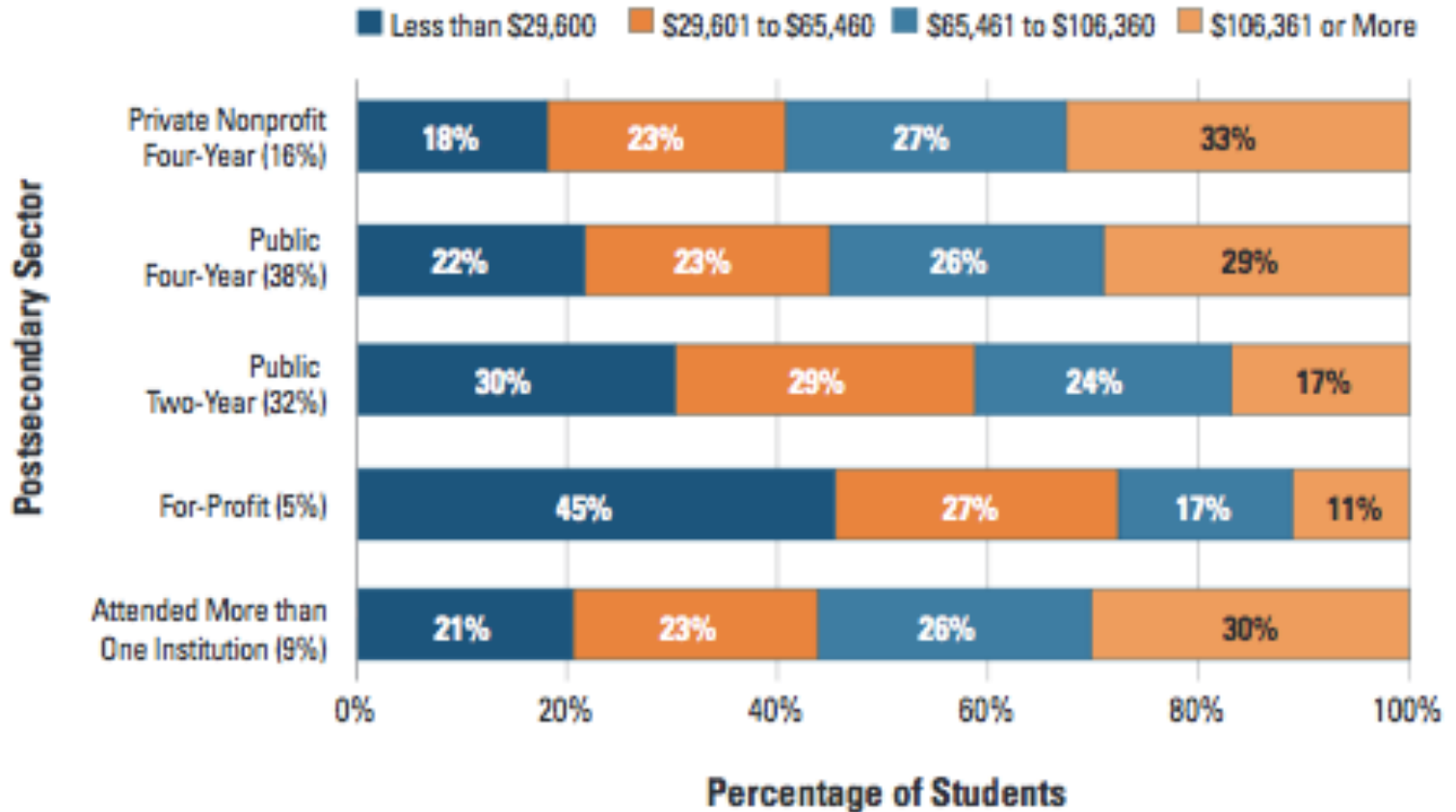


Source: National Center for Education Statistics (2012). *Digest of Education Statistics*. Washington, DC: Author.



# College Destinations Vary By Family Income

Family Income Distribution of Dependent Students Within Postsecondary Sectors (with Percentage of Students Enrolled in Each Sector), 2011-12



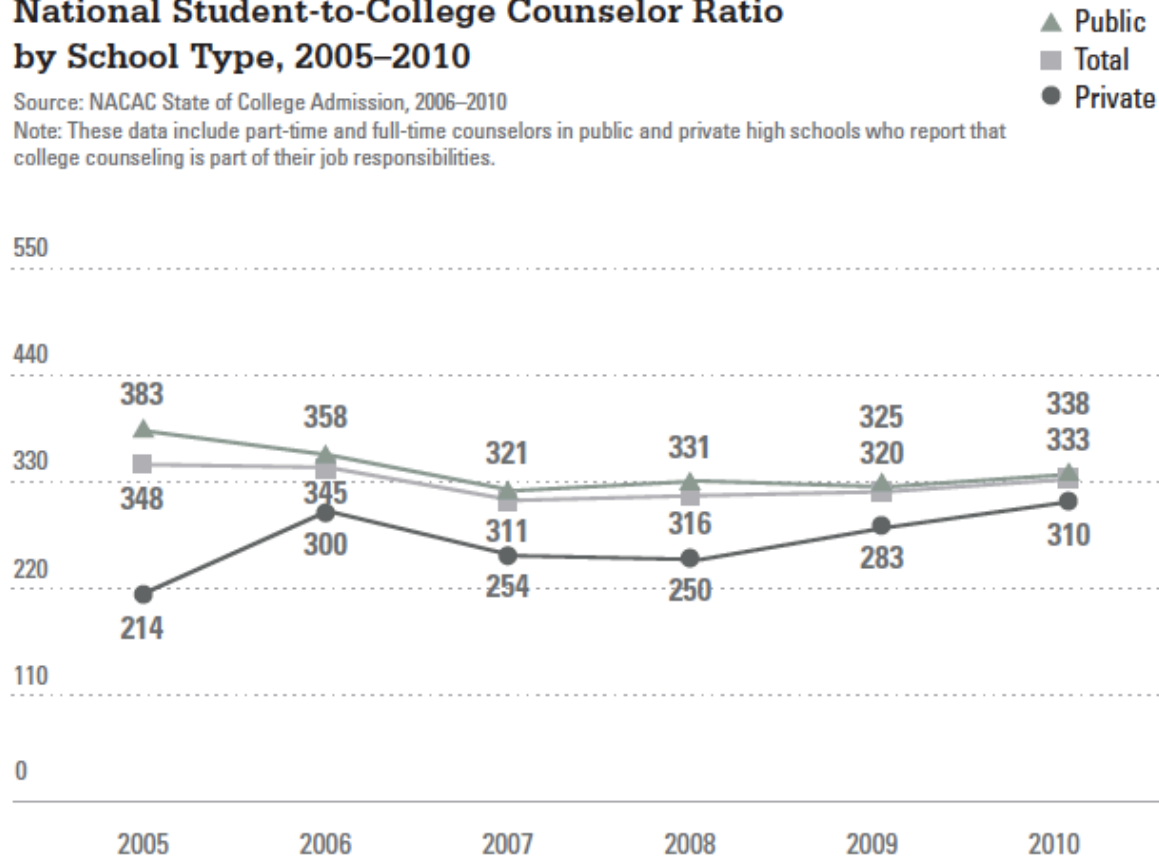
Source: Baum, S., Ma, J., & Payea, K. (2013). *Education Pays*. Washington, DC: College Board.

# Trend 4: Minimal Changes In Availability of H.S. Counselors

## National Student-to-College Counselor Ratio by School Type, 2005–2010

Source: NACAC State of College Admission, 2006–2010

Note: These data include part-time and full-time counselors in public and private high schools who report that college counseling is part of their job responsibilities.



Source: Hughes, K. (2012). *The college completion agenda 2012, Progress report*. College Board Advocacy & Policy Center.

## Trend 5: Increasing Attention to Finding the “Silver Bullet”

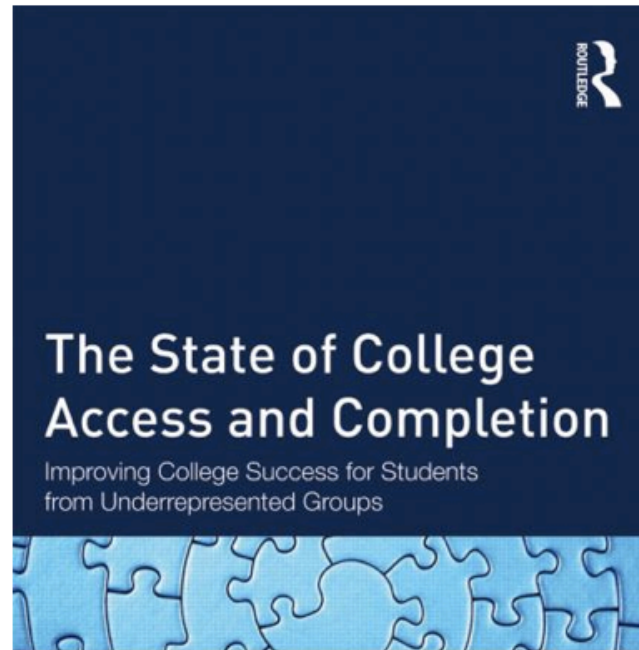




# Is Stratification of Higher Education Opportunity Inevitable?



# What are Effective Strategies for Raising Attainment and Closing Gaps Across Groups?



Edited by LAURA W. PERNA and ANTHONY JONES

Perna, L.W., & Jones, A. (Eds., 2013). *The state of college access and completion: Improving college success for students from underrepresented groups*. New York, NY: Routledge

# Recommendations

## *(The State of College Access and Completion)*

1. **Improve academic readiness for college.**
2. **Improve alignment across and within sectors and levels**
3. **Improve college affordability**
4. **Ensure early knowledge of college and aid**
5. **Adapt approaches to reflect diversity of students, institutions, and state and other contexts**
6. **Collect and use data to monitor college access and completion and refine policies and practices**

# The Role of State Policy in Improving Attainment

## *The* Attainment Agenda

State Policy Leadership

*in*

Higher Education

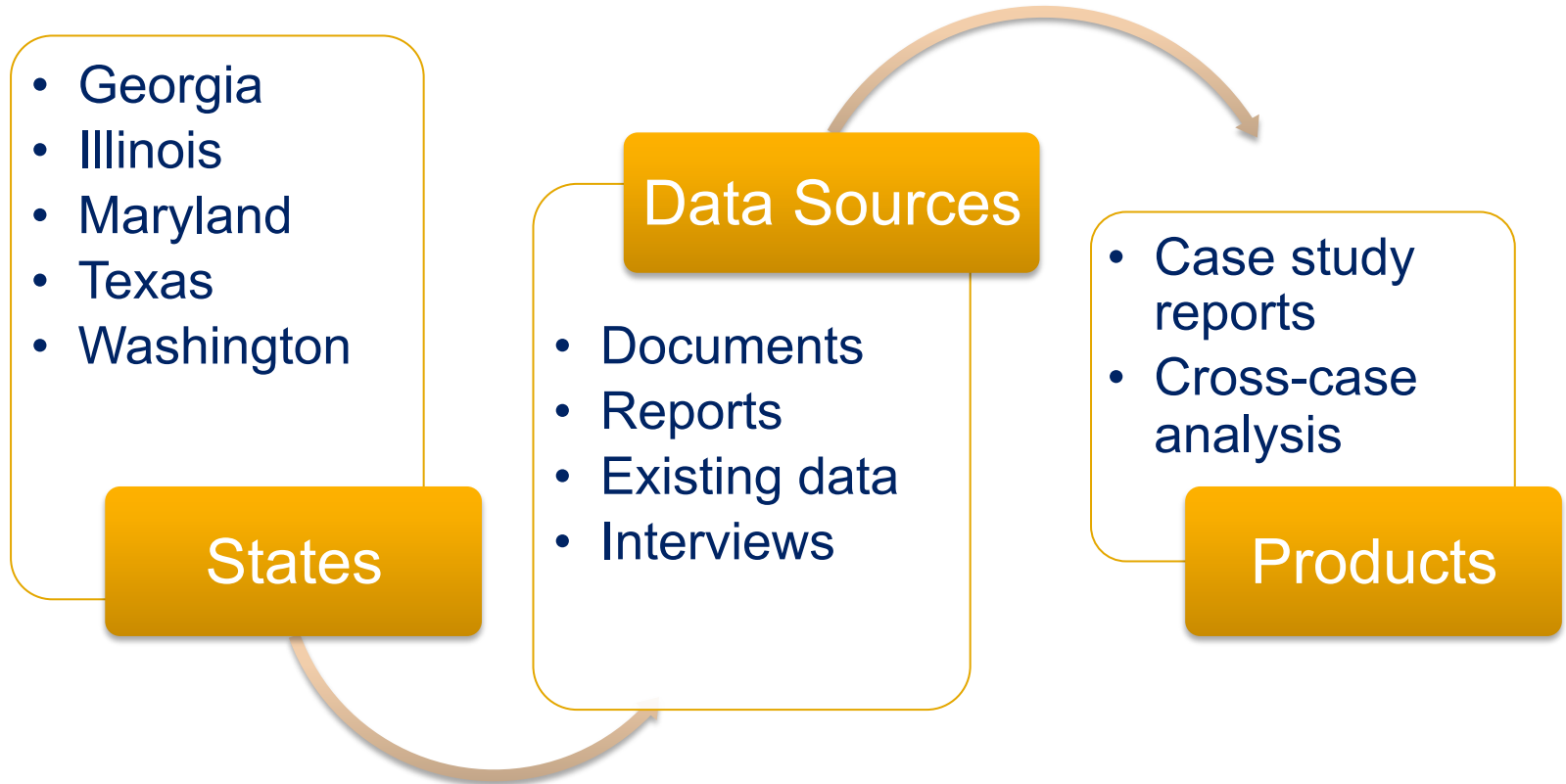


Laura W. Perna & Joni E. Finney

*Foreword by Patrick M. Callan*

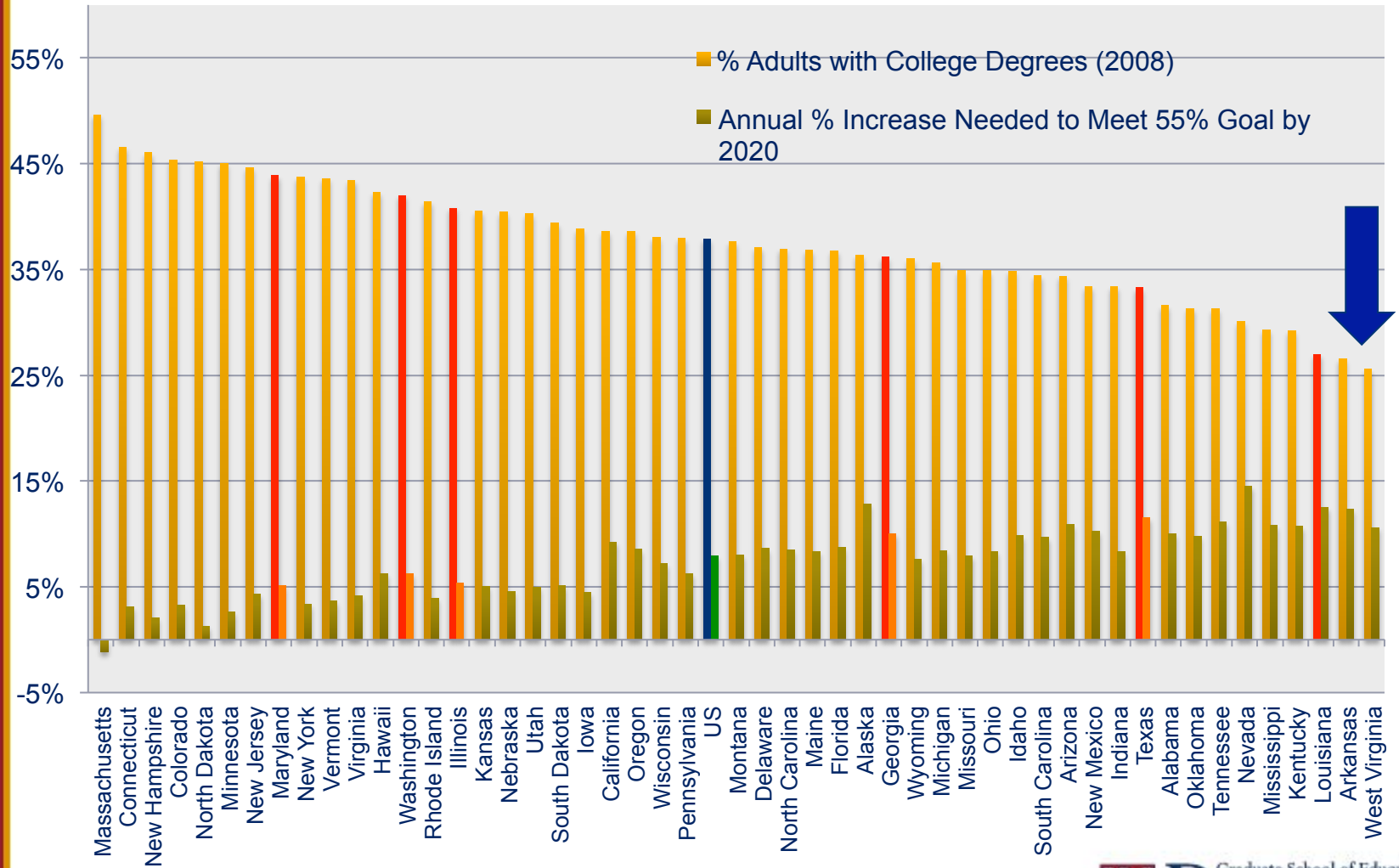


# What We Did





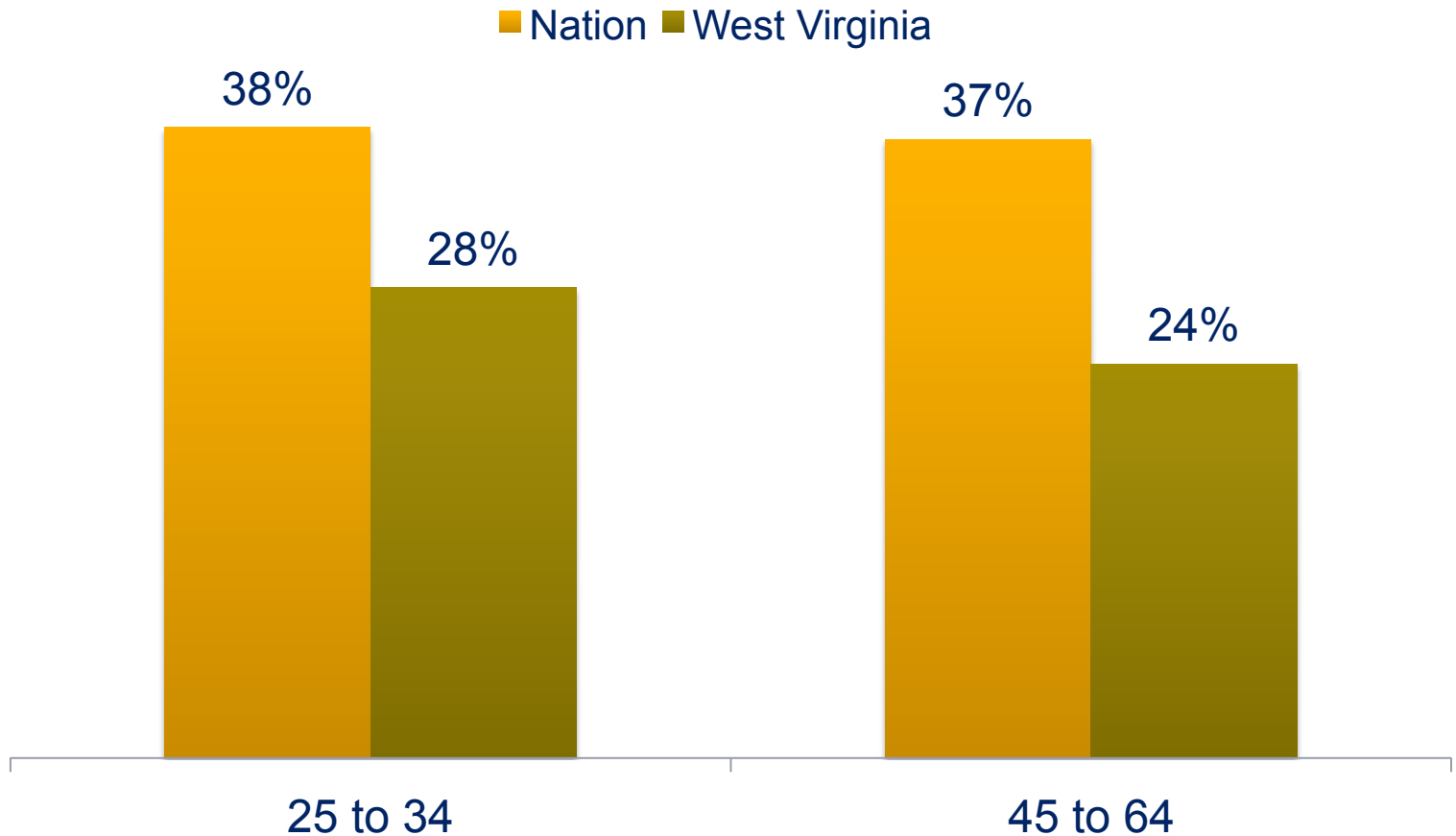
# Educational Attainment Varies Across States



Source: Kelly (2010)

# Educational Attainment in West Virginia is Higher Among Younger than Older Adults

Percentage of Adults With at Least an Associate's Degree, 2008



Source: Kelly (2010)



## State-Specific Stories

Illinois

- A story of decline

Washington

- State leadership vacuum

Maryland

- Much accomplished, much at stake

Texas

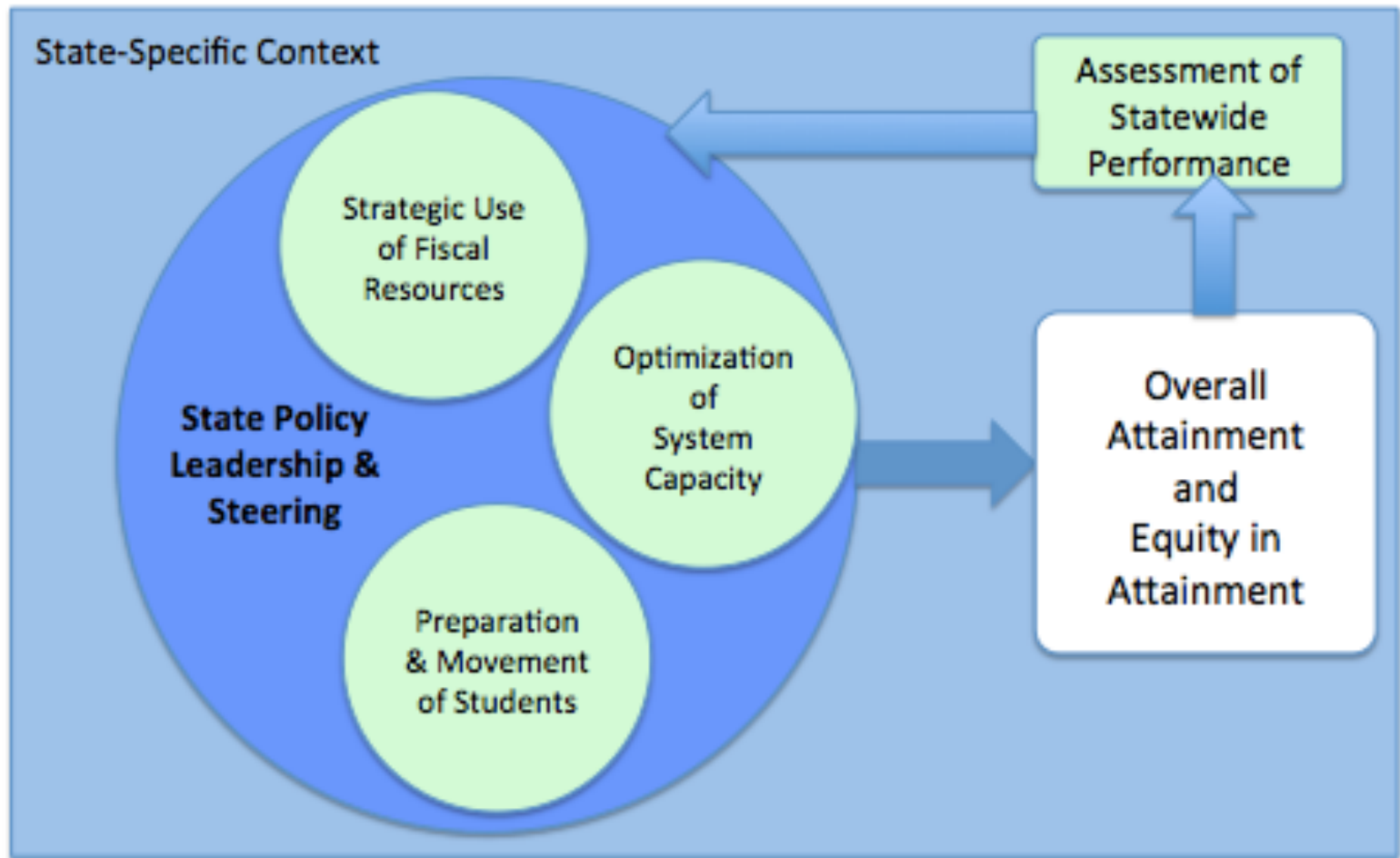
- Hard choices ahead

Georgia

- Perpetuating disparity



# Cross-State Conclusions

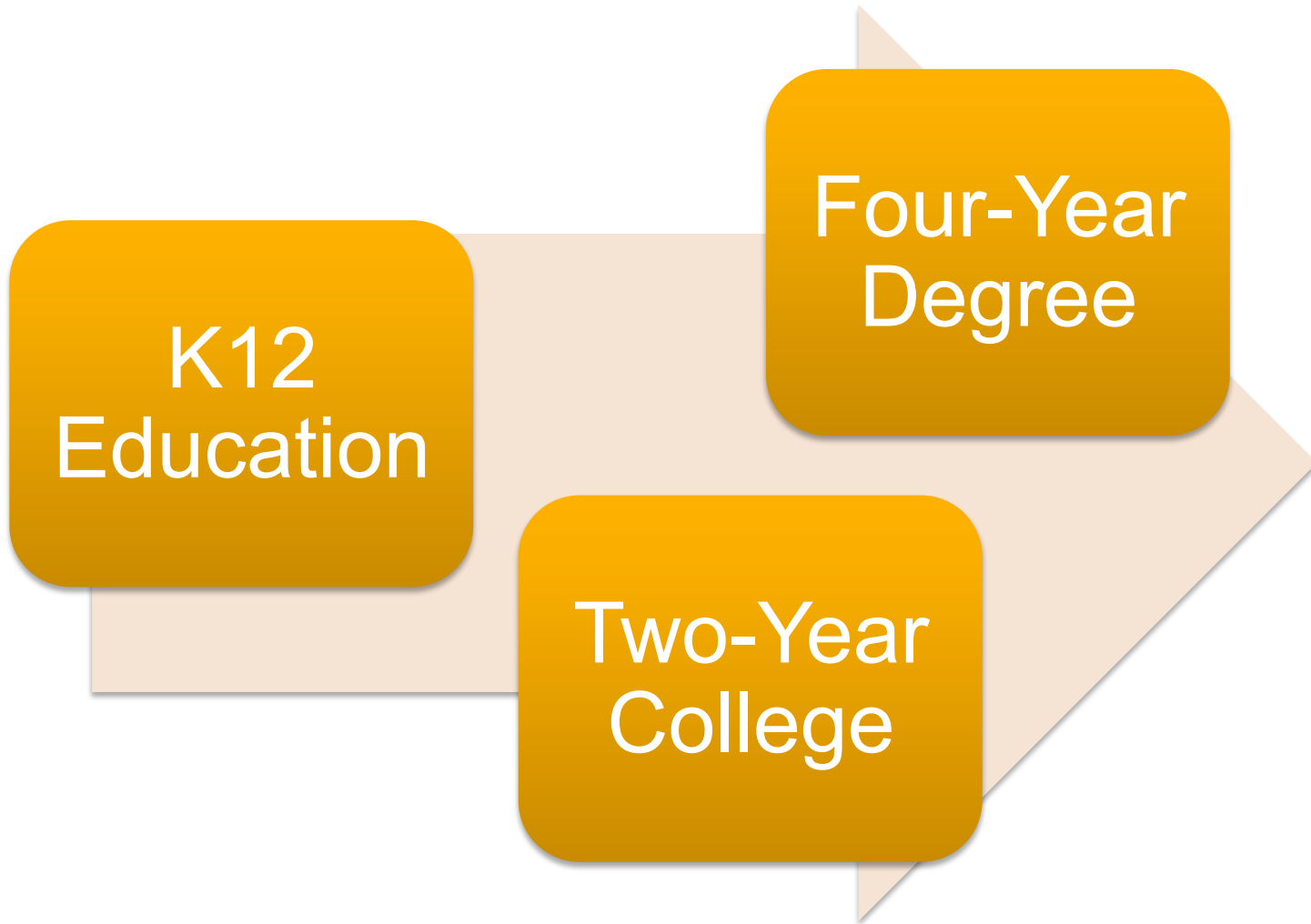


Source: Perna & Finney (2014).

# Strategic Use of Available Fiscal Resources



# Academic Preparation and Smooth Movement of Students



K12  
Education

Four-Year  
Degree

Two-Year  
College

# Optimization of System Capacity



# Policy Leadership and Steering



# Make Equity a Priority



*The only thing more expensive than education is ignorance.*  
– Benjamin Franklin



# Alliance for Higher Education and Democracy

[www.ahead-penn.org](http://www.ahead-penn.org)

