

## DOCUMENT DE TREBALL

XREAP2014-01

# Are we living longer but less healthy? Trends in mortality and morbidity in Catalonia (Spain), 1994-2011

Aida Solé-Auró (RFA-IREA, XREAP)  
Manuela Alcañíz (RFA-IREA, XREAP)

**Are we living longer but less healthy?  
Trends in mortality and morbidity in Catalonia (Spain), 1994-2011**

Aïda Solé-Auró<sup>1,2</sup> and Manuela Alcañiz<sup>2</sup>

<sup>1</sup>Mortality, Health and Epidemiology Unit  
Institut National d'Études Démographiques INED  
133 Boulevard Davout, 75020, Paris, France.

<sup>2</sup>Riskcenter, Department of Econometrics, Statistics and Spanish Economy  
University of Barcelona  
Av. Diagonal 690, 08034 Barcelona, Spain.

**Abstract**

Evidence on trends in prevalence of disease and disability can clarify whether countries are experiencing a compression or expansion of morbidity. An expansion of morbidity as indicated by disease have appeared in Europe and other developed regions. It is likely that better treatment, preventive measures and increases in education levels have contributed to the declines in mortality and increments in life expectancy. This paper examines whether there has been an expansion of morbidity in Catalonia (Spain). It uses trends in mortality and morbidity from major causes of death and links of these with survival to provide estimates of life expectancy with and without diseases and functioning loss. We use a repeated cross-sectional health survey carried out in 1994 and 2011 for measures of morbidity; mortality information comes from the Spanish National Statistics Institute. Our findings show that at age 65 the percentage of life with disease increased from 52% to 70% for men, and from 56% to 72% for women; the expectation of life unable to function increased from 24% to 30% for men and 40% to 47% for women between 1994 and 2011. These changes were attributable to increases in the prevalences of diseases and moderate functional limitation. Overall, we find an expansion of morbidity along the period. Increasing survival among people with diseases can lead to a higher prevalence of diseases in the older population. Higher prevalence of health problems can lead to greater pressure on the health care system and a growing burden of disease for individuals.

**Keywords:** healthy life expectancy, diseases, physical functioning, Spain.

## **Introduction**

In recent years, researchers have tried to understand whether the ideal of living longer and healthier lives will be accomplished. Mortality and morbidity research is crucial to address such a complex issue. Many countries have experienced a continuing decline in mortality during the past half-century, influenced by overall reductions among older individuals after retirement age (Vaupel et al. 1998; Robine 2011; Janssen and Kunst 2005) with an increasing chance of surviving to the fourth age (Baltes and Mayer 1998). In the future, mortality changes at very old ages will be compelling due to mortality declines from cardiovascular and respiratory diseases, which are attributable to medical prevention, better treatment of diseases, and increases in education levels (Crimmins et al. 2010). However, living to older ages has raised the question of how healthy longer life will be. Surprisingly, countries experiencing longer lives at very old ages, e.g. southern European countries, do not appear to have better health and they often rank among the worst in indicators of disability. For instance, Spain is one of the European countries with the longest life expectancy at birth in 2009 (HMD 2013) but the highest levels of functioning problems (Solé-Auró and Crimmins 2013), coupled by facing a wave of increasing financial and social costs of long-term care (Alcañiz et al. 2011).

Taking into account these demographic and health changes, our work tries to understand whether this long life is being accompanied by an increase in time living in good health, examining changes in the prevalence of diseases and loss of mobility along with change in mortality in a Mediterranean region of over seven million people (Catalonia, Spain). In order to clarify whether there have been changes in the transition from health to disease or mobility limitations, we will look at three chronic conditions which can result in death, as well as mobility limitations, and link these with mortality. Hence, we will provide estimates of life expectancy with and without these conditions during the last two decades. In the following sections we summarize the recent general trends in health, morbidity, disability and mortality, paying special attention to Spain. We begin with a discussion of the dynamics of health to see whether there is a redistribution of disease and disability in the latter stages of life. Afterwards, we study trends in major diseases and mobility limitations, and we compute healthy life expectancies linked to disease and disability. In the end, our main aim is to investigate the implications of changes in the prevalence of conditions on the length of life with and without disease and mobility limitations in the life table population.

### **The dynamics of health at old ages**

As Gruenberg (1977), Manton (1982) and Fries (1980) pointed out thirty years ago, mortality declines at older ages could be due to: 1) an expansion of morbidity (people live longer, but less healthy), 2) a compression of morbidity (death is delayed, disease starts later), or 3) a dynamic equilibrium between increased prevalence of disability and a reduction in its severity. These three theories have contributed to the development of further research on health trends (Robine and Michel 2004) and are important for service planning, since the three imply quite different pressures on health systems and services.

The optimistic point of view of aging proposed by Fries (1980), a compression of morbidity, pointed out that morbidity is compressed into a shorter period before death, increasing the proportion of life free of disease. There is now an open debate about this theory within a large body of research in demography, epidemiology and public health. In the 1990s, an increase in life expectancy was accompanied by an increase in time lived without disability (Cai and Lubitz 2007) or moderate limitations (Graham et al. 2004), indicating a dynamic equilibrium, as only a small delay in the onset was found. In the early 2000s, a continuation of the dynamic equilibrium of the 1990s (Cheung and Yip 2010; Galenkamp et al. 2012), and an emerging expansion in some forms of severe disability in the older populations were observed (Hashimoto et al. 2010). Thus, there was an expansion of morbidity by diseases in the late 1990s and early 2000s as the prevalence of chronic diseases and some risk factors appear to have been increasing in both Europe and other developed regions (Gutiérrez-Fisac et al. 2002; Crimmins and Beltrán-Sánchez 2011). Spain, like other countries (Freedman et al. 2004; Cambois et al. 2008), experienced a compression of disability since the 1980s (Sagardui-Villamor et al. 2005). For diseases, most prevalences in the Spanish population have risen until advanced ages (Martínez-Beneyto et al. 2011). Further investigation will provide evidence on survival and morbidity trends in Spain.

### **Trends in diseases**

At the beginning of the past century, infectious diseases accounted for the majority of deaths, but now chronic diseases dominate. Due to medical improvements people often live with diagnosed diseases for long periods of time. Cardiovascular disease (CVD) is a major health problem across the world and is now responsible for approximately one-third of the deaths in both developing and developed countries (Deaton et al. 2011). CVD among European populations is mainly attributable to classical risk factors such as diets high in saturated fats, elevated cholesterol, hypertension, diabetes, smoking and sedentary lifestyle. However, it is important to notice that developed countries have enjoyed substantial mortality declines in CVD (O'Flaherty et al. 2013; Bhatnagar et al. 2011). Within Europe, southern European countries are better off in terms of CVD mortality risk than those in the north. CVD in Spain has also experienced a downward trend (Ruiz-Ramos et al. 2008), and it now represents the second lowest coronary mortality rate in Europe after France (Sans et al. 1997).

Hypertension is one of the most prevalent universal risk factors, especially in patients with established CVD, and accounts for 6% of deaths worldwide (Murray and Lopez 1997). Around 11% of all disease burden in developed countries and about a quarter of European heart attacks are due to hypertension, while hypertensive individuals have twice the risk of experiencing heart attack compared to those without a history of hypertension (Nichols et al. 2012). The treatment of hypertension has improved dramatically over the past decades, contributing to the reductions of mortality incidence due to CVD. In Spain, substantial efforts have been made to diminish hypertension rates (Llisterri et al. 2012); however, the treatment strategy adopted has not been enough to slow down the increases through the last decade (Cordero et al. 2011).

Diabetes is another chronic disease that substantially contributes to increase the risk of CVD, and also magnifies the effect of other risk factors (cholesterol levels, raised blood pressure, smoking and obesity). People with diagnosed diabetes have three times the risk of a heart attack compared to those without (Nichols et al. 2012). Diabetes trends in Europe are alarming, given the notable increase in prevalence in most countries (Passa 2002). Spain is not an exception and diabetes has become an important public health problem because of its growing magnitude and its impact on CVD (Ruiz-Ramos et al. 2006). A combination of several factors, such as changes in the diagnostic criteria for diabetes, population aging, and lower mortality among persons with diabetes, has led to the rise in increases in the disease (Valdés et al. 2007).

Other diseases, such as cancer, play an important role in mortality and morbidity research, though they will not be examined in this study due to lack of data. Cancer is the leading cause of death in developed countries, and the global burden of cancer continues to increase (Jemal et al. 2011). During the past decade, many changes in the occurrence, survival, and mortality of cancer have occurred. In Europe, the total number of cancer cases is growing due to the aging of the population (Malvezzi et al. 2012), but mortality from major cancers has fallen because of the continuing progress in prevention, early detection, and better control of co-morbidity, as well as the recent large reductions in smoking prevalence among males (Karim-Kos et al. 2008). Important improvements in cancer survival have been achieved in southern and central Europe, where survival rates have been traditionally lagging behind compared to the rest of European countries (Coleman et al. 2003). Cancer prevention and management in Europe is moving in the right direction by increasing the chance of survival and cure among those who do develop cancer. Since the mid 1990s Spanish cancer mortality rates decreased about 12% for both genders (Regidor et al. 2009).

### **Disability and physical functioning trends**

The first studies on disability appeared in the late 1960s and 1970s with a general conclusion that disability did not decrease during this time period (Wilmoth 1997; Kaplan 1991; Crimmins et al. 1997). Later on disability declines were reported, particularly for the older population and during the 1980s, in developed countries like Japan, the United States, or France (Jacobzone et al. 1999; Robine et al. 2002). In the 1990s, the worldwide rates of disability indicated a dynamic equilibrium between prevalence and severity (Parker and Thorslund 2007; Moe and Hagen 2011; Crimmins et al. 2009), and mixed patterns have appeared in recent years. The disability distribution within Europe is not uniform. Some European countries have accomplished an expansion of disability among mid-adults (Cambois et al. 2012; Lafortune et al. 2007), while other countries, like the Netherlands, have experienced high and stable prevalence of disability. However, disability rates are expected to increase in the future due to the aging of the population (Picavet and Hoeymans 2002). Southern Europeans are expected to spend a higher percentage of their lives with disability compared to the people from the north (Minicuci et al. 2004). For instance, Spain experienced a compression of disability and the postponement of severe disability onset to more advanced ages from the 1980s to the present (Zunzunegui et al. 2006; Sagardui-Villamor et al. 2005).

In the progressive deterioration of health, the mobility limitations that people suffer at old ages are an anticipated stage before the development of disability. The trends in prevalence of functioning problems have reported reduced functioning ability of people approaching old ages in the early 2000s (Martin et al. 2010; Lakdawalla et al. 2004). These results contrast unfavorably with the ones obtained two decades ago, particularly in the U.S., when research showed improvements in physical functioning problems in the 1990s (Crimmins 2004). However, there is a less clear worldwide pattern between the 1990s to 2000s. For instance, in the 1990s, increasing functioning limitations were found for England, while reduced prevalences appeared among older Norwegians, and stable rates were seen in the Netherlands (Moe and Hagen 2011; Martin et al. 2012; Hoeymans et al. 2011). Knowing these trends is crucial, because an increase in the number of older persons may raise the demand for health care services, whereas decreasing prevalences of functioning limitation among them may counteract this demographic effect.

## **Methodology**

### **Data**

We used data obtained between 1994 and 2012 from the Catalan Health Survey (ESCA) (Generalitat de Catalunya 2013). The Department of Health in Catalonia (Spain) – a highly populated Mediterranean region located in the northeast corner of the Iberian Peninsula – is responsible for the technical execution of the project (e.g. sample design, questionnaires). The ESCA is the only source of micro data for Catalonia, containing information on morbidity in relation with socio-demographic variables, health behaviors and individual's state of health. The sample follows a stratified design, based on age, gender and geographical area. The random collection of the data is performed using personal interviews. The questionnaires of each time-period are designed to be comparable.

This cross-sectional survey was collected in 1994 and continuously during the period 2010 to 2012 (Alcañiz et al. 2014). In the last time period we combined data of the last three year's available (2010, 2011 and 2012) to increase our sample size, and considered 2011 our midpoint year. Hence, when we refer to the year 2011 in our analysis, we include data from the years 2010, 2011 and 2012. Our sample is comprised of 20,433 Catalan non-institutionalized residents (12,584 people in 1994 and 7,849 people in 2011) randomly selected aged 15 years and older. Because mortality is not appended to the ESCA, mortality information came from the official life tables from the Spanish National Statistics Institute database (INE 2012).

### **Measures**

We use three indicators of the presence of chronic diseases: hypertension, diabetes and heart disease. Similar question wording is reported in the two time periods in response to the question: "Do you have or has a doctor ever told you that you have any of the following conditions...?", followed by a list of chronic medical disorders including hypertension, diabetes and heart disease. Unfortunately, data regarding cancer were not collected in 1994, so we cannot include this disease between the ones studied here.

In this survey, people also reported whether they had difficulties or limitations to perform a set of mobility functions. We have chosen an indicator of mobility limitations based on a positive answer (yes versus no) to at least one of these three items: 1) mobility problems, such as the inability to move out of the house without receiving help from another person, 2) walking problems, that may require using special equipment, and 3) other important mobility limitations, such as the difficulty to walk up and down a flight of stairs, and standing, without using special equipment.

The interest of studying both chronic diseases and mobility functions is to see how and when such hazardous health conditions appear in the pathway of human life span, and how long they last until death ensues. It is worth noting that having more chronic diseases may cause functional limitations in the population, and therefore, an activity limitation.

### **Statistical analyses**

We first examine recent changes in the prevalence of diseases, which are prominent causes of mortality at older ages, and the presence of mobility limitations. Healthy life expectancy is estimated using the *Sullivan* approach (Sullivan 1971), a prevalence-based method of dividing life-table years lived in an age interval, into years with and without health disorders, based on the specific health prevalence of that age group. We also show 95% confidence intervals for estimated life expectancy with and without conditions (Jagger 1999). Using the healthy life expectancy calculations, we compute the expected age that chronic diseases or mobility limitations appear in life by gender in each time period. Analyses were conducted using Stata software, version 12 (StataCorp).

## **Results**

### **Prevalences of diseases and functional limitations**

Table 1 shows the percentages of people with hypertension, diabetes and heart disease, and ensuing mobility limitations. Results are stratified by age groups and gender over time. Error margins may be constructed based on statistical sampling analysis (Kish 1995; Levy and Lemeshow 1991). If we set a 95% confidence level, estimated sampling errors are around  $\pm 3\%$  for all percentages, except at the older ages, where samples are smaller and the errors range between  $\pm 5\%$  and  $\pm 7\%$ .

[Insert Table 1 about here]

Prevalence of hypertension increased over time, while gender differences exist between periods. For men, prevalence of hypertension increased in the almost two-decade time period, except at younger ages (15-39) where rates are low and differences between periods are not statistically significant. After age 60, the percentage of males with hypertension is similar with age. This could indicate a dynamic equilibrium among men if some individuals have been diagnosed with hypertension later in life and are balanced with those that were diagnosed at younger ages

and already died. This is not the case for women, who survived longer with diseases, and show significant increases after age 60 over time.

Diabetes is our second chronic disease and significant increases are seen between 1994 to 2011 through much of the adult age range for males (50-plus) and only in older ages for females (80-plus). Increments of diabetes rates are seen with age, growing similarly for men and women. Gender differences are only significant in the range 50-79 for 2011, showing lower percentages of disease for women. It could be stated that for ages 50-plus the onset of diabetes is a whole decade earlier for men compared to women. Diabetes rates diminish for both genders after age 70 in 1994. This is not the case in recent dates, where prevalence for men is steady after age 70, and even grows for women.

Our third health condition is heart disease. In both periods, the prevalence of heart disease rises as individuals get older. Such increments until very old ages may be a result of early detection plans, and as a consequence longer survival due to better treatment. Again, significant differences exist by gender over this period. Among men aged 70-plus, increases of heart disease prevalences are noticed in the two decade period, while this trend is not so clear for women. Women rates of heart disease are quite similar over time, with significant increases only after age 80.

Table 1 concludes with our mobility measure. The prevalence of mobility problems doesn't seem to stop increasing over time, a sign of longevity since more people are reaching older ages. Since this is a non-fatal health condition, the growing prevalence of mobility limitations directly influences the quality of life of older people. In general, rates of mobility limitations rise by age and gender over time, and higher levels are found for women than men almost at all ages. Seventy-plus is a critical age where mobility problems experienced a sharp growth.

### **Changes in healthy life expectancy: 1994-2011**

Few analyses on healthy life expectancy in Spain or other Mediterranean countries have examined changes in life expectancy with disease or mobility limitations (Sagardui-Villamor et al. 2005). Figure 1 shows the increase in overall survival between 1994 and 2011. This curve indicates a rise on survival time over these years, so people are expected to live longer now than two decades ago. Figure 1 also shows the curves representing survival without mobility limitations and without diseases over time. For both genders survival curves without diseases are shifted leftward, indicating less time surviving without diseases. A particularity for women between ages 45 and 55 is seen as curves show more time surviving without diseases in recent periods. Survival curves without disease are much more linear than those for mobility limitations or full life, especially after age 40. This steady negative slope in the survival curve without diseases indicates that the onset of diseases after age 40 is not as concentrated in older ages as it is death. It is worth noting that survival curves without mobility limitations are closer to overall curves - more for men than for women -, showing that females spend a longer period of their late life accusing mobility problems. The curves indicating survival without mobility limitations are above those representing survival without diseases, meaning that mobility limitations occur at older ages in the whole population than the diseases we consider.



[Insert Figure 1 about here]

Table 2 gives the values of the expected lifetime with and without diseases and mobility limitations over time at 15 and 65 years of age. Confidence intervals are shown and due to large sample sizes their precision is quite good (hardly exceeding 1 year around the healthy life expectancy). Life expectancy increases along the whole period, showing faster increments in younger cohorts. At age 15, life expectancy increased 4.6 years for men and 3.2 years for women; at age 65, both genders show the same gain in life expectancy (2.5 years). Since we want to address how mortality and morbidity trends affect the lifetime of the population, and since the majority of health disorders appear late in life, we are going to further concentrate on the healthy life expectancy results obtained at age 65.

[Insert Table 2 about here]

Over time, men aged 65 experienced increments of life expectancy with disease (4.5 years), and consequently a decrease of years without disease (2 years). If we compare increases in men overall life expectancy with decreases in life expectancy without disease, we observe an expansion of morbidity: men live longer but the onset of disease is earlier. This trend is also true for women. This expansion can be easily seen when we look at the percentage of life spent with disease over time: at age 65, this percentage goes from 52% to 70% for men and from 56% to 72% for women. Similar patterns are observed at age 15.

In recent times we also see different patterns on the gender gap in life expectancy with diseases. Table 3 presents the expected age that health disorders appear by gender over time. For instance, in 2011, 15-year-old men will suffer from diseases a third of their life, starting, on average, at age 58.1; the same portion of men's life with diseases is identified for women, but they will start suffering from the diseases considered here later in life as they live longer (age 61.6). Therefore, 3.5 years was the gender difference in 2011; but only 1.4 years in 1994 (starting at age 62.1 for men and 63.5 for women). This gender gap decreases, but does not vanish, at older ages: 1.1 years in 1994, and only a scarcely significant 0.6 years in 2011. At older ages women's health declines more sharply than men's and the gap between genders fades out.

[Insert Table 3 about here]

Temporal patterns for mobility limitations are slightly different. At 65 the percentage of life with functioning problems has risen from 24% to 30% for men, and from 40% to 47% for women from 1994 to 2011. Men aged 65 in 1994 have experienced mobility problems at 77.3 years; in 2011 this activity limitation appears at 78, and women at age 65 have suffered mobility problems at 77.1 in both years (Table 3). Therefore, the ages of onset of impairment are very similar; thus we can conclude that there is no relevant gender difference concerning mobility limitations over time. There has been an expansion of life unable to function for both genders, but this expansion is not due to an earlier onset of mobility problems, but to the increase in life expectancy. It is also remarkable that the magnitude of this expansion mainly at older ages is much lower than the one for chronic diseases.

## Conclusion

Regarding the health of the population in Catalonia (Spain), we found that mobility limitations occur later in life than the diseases studied. These chronic diseases arrive earlier for men than women, while the onset of mobility limitations for those who were able to function at 65 appears at a similar age by gender at both time periods (Table 3). Specifically, the prevalence of hypertension increases over time, though part of these increments may be due to better health surveillance that makes people aware of the conditions they have (Howard et al. 2010). Concerning diabetes the fact that in recent dates prevalences do not decrease at old ages suggests that better monitoring and treatment have succeeded in avoiding premature death due to health complications caused by this disorder for both genders (Valdés et al. 2007). Part of the gender differences in heart disease may be explained, as pointed out by Flink et al. (2013), by the fact that women are less likely to know the symptoms of heart failure, which may delay requesting the medical services until life is already seriously compromised. Because life expectancy is longer for women than men, women will spend a higher portion of their lives with both chronic diseases and mobility limitations.

Our findings reveal an outstanding expansion of morbidity by disease along the period at the oldest age, as people live almost 5 years longer with diseases in 2011 than at the beginning of the 1990s. This expansion is attributable to both a longer life (mostly for women), and an earlier onset of diseases (especially for men), which translates to higher incidence as pointed out by Solé-Auró et al. (2013) in some European countries. Increasing survival among people with diseases has led to a higher prevalence of diseases in the Catalan population. As shown in Figure 1, our results may be picking up not only a higher risk of illness at younger ages, but an improvement in early control and diagnosis of diseases over the years. Due to the earlier onset of disease in the lifetime, individuals affected are not only the oldest, but also working age people. There is no evidence on whether earlier diagnosis of diseases is caused by a real deterioration of people's health at younger ages, higher incidence, or if it is somehow the product of better health control leading to earlier detection. It is likely that the rise in the prevalence of health disorders is mainly explained by better knowledge of the diseases, increased contacts with medical doctors, and screening campaigns. Either way, a scenario of a higher prevalence of diagnosed health problems and longer disease-specific survival can lead to a greater pressure on the health care system, compounded by the fact that in Spain this system is universal and provides appropriate basic health care coverage for all. This effect is lessened taking into account that early diagnosis helps prevent the arrival of advanced stages of the disease that often imply substantial medical expenses. In addition, regarding individual quality of life, a timely diagnosis usually implies medical care, which can extend their life in relatively good health, or at least lead to less severe illness. In sum, disease expands, although we can't assert that quality of life deteriorates because it may be an effect of decreased severity as a consequence of better monitoring of diseases, which would partially explain the increase of the proportion of years with disease. Concerning mobility limitations, little expansion between 1994 and 2011 is found for men and women at age 65, mainly caused by the increments in life expectancy and not by an earlier detection. Nevertheless, the growth on the demand of health care is not necessarily smaller than for diseases, because the expenses incurred depend on the severity of the disorders and need for care.

Gender differences are also relevant over time. Our results show an expansion of the gender gap in life expectancy with diseases at younger ages, but decreases at older ages. If the gender gap keeps decreasing at older ages, it may suggest that the mortality advantage of women is influenced by lower prevalence of the diseases we consider in earlier stages in the life cycle. The literature states several causes for these gender differences, such as hormonal differences (Pérez-López et al. 2010). In any case, it has to be taken into account that these results could change if we studied other diseases, such as cancer. Concerning mobility limitations, no relevant changes in gender difference appear over time.

Despite the Spanish advantageous position in CVD mortality rates within Europe, if we want a more healthy society with fewer diseases concentrated at the end of our life, it is important to work on prevention. The strong interrelation among hypertension, diabetes and heart disease contributes to increased risk of cardiovascular problems and magnifies the effect of several risk factors, such as smoking or obesity (Nichols et al. 2012). Much of the CVD burden worldwide is avoidable, but demands a global approach to prevention (Deaton et al. 2011). For instance, there is a wide field for preventive measures of diabetes and hypertension beginning with simple strategies of primary care, such as the control of body mass index (Lee et al. 2012). Thus, a good control of hypertension is relatively easy to achieve through a healthy lifestyle accompanied by medication in severe cases (Llisterri et al. 2012). Deterioration in mobility associated with old age could be delayed by educating people from youth about the benefits of a regular practice of physical exercise. Further thoughts are necessary on how to improve the key modifiable lifestyles or behavioral risk factors for CVD and functioning loss - smoking, dietary intake, and physical activity (WHO 2009). In fact, any improvement in the prevention or treatment of one of these diseases will have an overall positive effect over the individual health, and therefore over society as a whole.

There are some limitations to the present study that should be noted here. The investigation of disease incidence and longer survival with adverse health conditions would provide clarity, but no longitudinal data for Spain are available. The ESCA does not provide any indicator of disease severity, so we can not assert that quality of life related to health has been diminished. As we indicated above, cancer is another important disease to take into account, but our survey does not provide such information in the first year of our analysis. However, cancer does not directly interact with the diseases in this study and can therefore be analyzed separately. Moreover, since the institutionalized population is not included in our analysis, our findings apply only to the community-dwelling population. While we recognize these limitations, we believe that the analysis presented here is an important step in understanding the trends and dynamics in healthy life expectancy for almost the last two decades in a Mediterranean region.

Individual and population approaches are necessary for decreasing the global burden of health disorders. To do so, precise public health policies for specific individual sub-groups need to be implemented. Addressing societal factors that promote the development of unhealthy behaviors will lead to a better quality of life for individuals until advanced ages. Overall, we aim for better policies for better lives.

**Acknowledgments**

The authors are very grateful to the funding from NIA R01 AG040176-02, funding provided from the Spanish Ministry of Science and Innovation (ECO2010-21787-C03-01) and the Spanish Ministry of Economy and Competitiveness (ECO2012-35584) . The authors also acknowledge the Health Catalan Department team for sharing the data.

## References

- Alcañiz M, Mompart A, Guillén M, Medina A, Aragay JM, Brugulat P, Tresserras R (2014) Nuevo diseño de la Encuesta de Salud de Cataluña (2010-2014): un paso adelante en planificación y evaluación sanitaria. *Gacet Sanit*, in press
- Alcañiz M, Alemany R, Bolancé C, Guillén M (2011) The Cost of Long-Term Care in the Spanish Population: Comparative Analysis between 1999 and 2008. *Rev Met Cuant Econ Emp* 12:111-131
- Baltes PB, Mayer KU (1998) *The Berlin Aging Study Aging from 70 to 100*. Cambridge University Press. Available via <http://worldcat.org>
- Bhatnagar P, Scarborough P, Wickramasinghe K (2011) P1-93 Trends in the burden of cardiovascular diseases in the UK, 1961 to 2011. *J Epidemiol Commun H* 65 (Suppl 1):A92-A93
- Cai L, Lubitz J (2007) Was there compression of disability for older Americans from 1992 to 2003? *Demography* 44 (3):479-495
- Cambois E, Blachier A, Robine J-M (2012) Aging and health in France: an unexpected expansion of disability in mid-adulthood over recent years. *Eur J Public Health*. doi:10.1093/eurpub/cks136
- Cambois E, Clavel A, Romieu I, Robine J-M (2008) Trends in disability-free life expectancy at age 65 in France: consistent and diverging patterns according to the underlying disability measure. *Eur J Ageing* 5 (4):287-298
- Cheung K, Yip P (2010) Trends in healthy life expectancy in Hong Kong SAR 1996–2008. *Eur J Ageing* 7 (4):257-269
- Coleman MP, Gatta G, Verdecchia A, Esteve J, Sant M, Storm H, Allemani C, Ciccolallo L, Santaquilani M, Berrino F, Group EW (2003) EURO CARE-3 summary: cancer survival in Europe at the end of the 20th century. *Ann Oncol: official journal of the European Society for Medical Oncology / ESMO* 14:128-149
- Cordero A, Bertomeu-Martinez V, Mazón P, Facila L, Cosin J, Galve E, Lekuona I, Rodriguez M, Moreno J, Gonzalez-Juanatey JR (2011) Trends in Hypertension prevalence, control and guidelines implementation in Spain through last decade. *J Am Coll Cardiol* 57 (14s1):E591-E591
- Crimmins EM (2004) Trends in the Health of the Elderly. *Annu Rev Publ Health* 25 (1):79-98
- Crimmins EM, Beltrán-Sánchez H (2011) Mortality and morbidity trends: Is there compression of morbidity? *J Gerontol - B-Physicol* 66 B (1):75-86
- Crimmins EM, Garcia K, Kim JK (2010) Are International Differences in Health Similar to International Differences in Life-Expectancy?. In: Crimmins EM, Preston SH, Cohen B (eds) *International differences in mortality at older ages: Dimensions and Sources*. . Panel on Understanding Divergent Trends in Longevity in High-Income Countries. The National Academies Press, Washington, DC
- Crimmins EM, Hayward MD, Hagedorn A, Saito Y, Brouard N (2009) Change in disability-free life expectancy for Americans 70 years old and older. *Demography* 46 (3):627-646. doi:10.1353/dem.0.0070
- Crimmins EM, Saito Y, Ingegneri D (1997) Trends in Disability-Free Life Expectancy in the United States, 1970-90. *Popul Dev Rev* 23 (3):555-572
- Deaton C, Froelicher ES, Wu LH, Ho C, Shishani K, Jaarsma T (2011) The Global Burden of Cardiovascular Disease. *J Cardiovasc Nurs* 26 (4):S5-S14
- Flink LE, Sciacca RR, Bier ML, Rodriguez J, Giardina EG (2013) Women at risk for cardiovascular disease lack knowledge of heart attack symptoms. *Clin Cardiol* 36 (3):133-138
- Freedman V, Crimmins E, Schoeni R, Spillman B, Aykan H, Kramarow E, Land K, Lubitz J, Manton K, Martin L, Shinberg D, Waidmann T (2004) Resolving inconsistencies in trends in old-age disability: Report from a technical working group. *Demography* 41 (3):417-441
- Fries JF (1980) Aging, natural death, and the compression of morbidity. *N Engl J Med* 303 (3):130-135

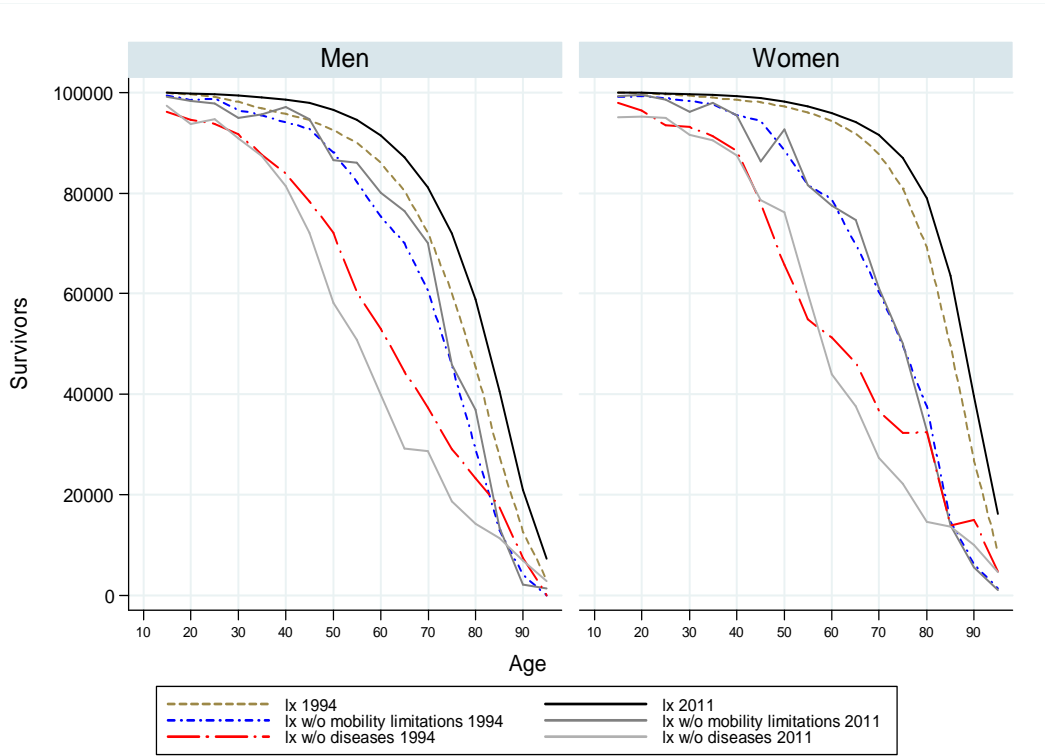
- Galenkamp H, Braam AW, Huisman M, Deeg DJH (2012) Seventeen-year time trend in poor self-rated health in older adults: changing contributions of chronic diseases and disability. *Eur J Public Health*. doi:10.1093/eurpub/cks031
- Generalitat de Catalunya (2013) Enquesta de Salut de Catalunya (ESCA), Departament de Salut, <http://www.gencat.cat/salut/esca>
- Graham P, Blakely T, Davis P, Sporle A, Pearce N (2004) Compression, expansion, or dynamic equilibrium? The evolution of health expectancy in New Zealand. *J Epidemiol Commun H* 58 (8):659-666
- Gruenberg EM (1977) The Failures of Success. *The Milbank Mem Fund Q Health Soc* 55 (1):3-24
- Gutiérrez-Fisac JL, Regidor E, Banegas Banegas JR, Rodríguez Artalejo F (2002) The size of obesity differences associated with educational level in Spain, 1987 and 1995/97. *J Epidemiol Commun H* 56 (6):457-460
- Hashimoto S, Kawado M, Seko R, Murakami Y, Hayashi M, Kato M, Noda T, Ojima T, Nagai M, Tsuji I (2010) Trends in Disability-Free Life Expectancy in Japan, 1995-2004. *J Epidemiol* 20 (4):308-312
- HMD (2013) Human Mortality Database, <http://www.mortality.org/>.
- Hoeymans N, Wong A, van Gool CH, Deeg DJH, Nusselder WJ, de Klerk MMY, van Boxtel MPJ, Picavet HSJ (2011) The Disabling Effect of Diseases: A Study on Trends in Diseases, Activity Limitations, and Their Interrelationships. *Am J Public Health* 102 (1):163-170
- Howard DH, Thorpe KE, Busch SH (2010) Understanding recent increases in chronic disease treatment rates: more disease or more detection? *Health Econ Pol Law* 5 (04):411-435
- INE (2012) Instituto Nacional de Estadística, Spain. <http://www.ine.es>
- Jacobzone S, Cambois E, Robine J-M (1999) The health of the Older Persons in OECD countries: Is it improving fast enough to compensate for population ageing? Ministerio de Desarrollo Social, Naciones Unidas
- Jagger C (1999) Health expectancy calculation by the Sullivan method. A practical guide. Nihon University. Population Research Institute
- Janssen F, Kunst AE (2005) Cohort patterns in mortality trends among the elderly in seven European countries, 1950–99. *Int J Epidemiol* 34 (5):1149-1159
- Jemal A, Bray F, Center MM, Ferlay J, Ward E, Forman D (2011) Global cancer statistics. *CA-Cancer J Clin* 61 (2):69-90. doi:10.3322/caac.20107
- Kaplan GA (1991) Epidemiologic Observations on the Compression of Morbidity: Evidence From the Alameda County Study. *J Aging Health* 3 (2):155-171
- Karim-Kos HE, de Vries E, Soerjomataram I, Lemmens V, Siesling S, Coebergh JWW (2008) Recent trends of cancer in Europe: A combined approach of incidence, survival and mortality for 17 cancer sites since the 1990s. *Euro J Cancer* 44 (10):1345-1389
- Kish JL (1995) Survey sampling. John Wiley, New York
- Lafortune G, Balestat G, Organisation for Economic C-o, Development (2007) Trends in severe disability among elderly people assessing the evidence in 12 OECD countries and the future implications. OECD. Available via <http://worldcat.org>
- Lakdawalla DN, Bhattacharya J, Goldman DP (2004) Are The Young Becoming More Disabled? *Health Affair* 23 (1):168-176
- Lee J, Gebremariam A, Vijan S, Gurney JG (2012) Excess body mass index–years, a measure of degree and duration of excess weight, and risk for incident diabetes. *Arch Pediat Adol Med* 166 (1):42-48
- Levy PS, Lemeshow S (1991) Sampling of Populations: Methods and Applications. John Wiley & Sons, New York
- Llisterri JL, Rodríguez-Roca GC, Escobar C, Alonso-Moreno FJ, Prieto MA, Barrios V, González-Alsina D, Divisón JA, Pallarés V, Beato P, on behalf of the Working Group of Arterial Hypertension of

- the Spanish Society of Primary Care Physicians (2012) Treatment and blood pressure control in Spain during 2002–2010. *J Hypertens* 30 (12): 2425-2431
- Malvezzi M, Bertuccio P, Levi F, La Vecchia C, Negri E (2012) European cancer mortality predictions for the year 2012. *Ann Oncol* 23 (4):1044-1052
- Manton KG (1982) Changing Concepts of Morbidity and Mortality in the Elderly Population. *The Milbank Mem Fund Q Health Soc* 60 (2):183-244
- Martin LG, Freedman VA, Schoeni RF, Andreski PM (2010) Trends In Disability And Related Chronic Conditions Among People Ages Fifty To Sixty-Four. *Health Affair* 29 (4):725-731
- Martin LG, Schoeni RF, Andreski PM, Jagger C (2012) Trends and inequalities in late-life health and functioning in England. *J Epidemiol Commun H* 66 (10):874-880
- Martínez-Beneyto V, Brugulat-Guiteras P, Mompert-Penina A, Rosas-Ruiz A, Tresserras-Gaju R (2011) Impacto de los trastornos crónicos en la esperanza de vida de la población de Cataluña en 1994 y 2006. *Med Clin: Suppl* 2 137:9-15
- Minicuci N, Noale M, Pluijm SMF, Zunzunegui MV, Blumstein T, Deeg DJH, Bardage C, Jylhä M, group ftCw (2004) Disability-free life expectancy: a cross-national comparison of six longitudinal studies on aging. The CLESA project. *Eur J Ageing* 1 (1):37-44
- Moe J, Hagen T (2011) Trends and variation in mild disability and functional limitations among older adults in Norway, 1986–2008. *Eur J Ageing* 8 (1):49-61
- Murray CJL, Lopez AD (1997) Global mortality, disability, and the contribution of risk factors: Global Burden of Disease Study. *Lancet* 349 (9063):1436-1442
- Nichols M, Townsend N, Luengo-Fernandez R, Leal J, Gray A, Scarborough P, Rayner M (2012) European Cardiovascular Disease Statistics 2012. European Heart Network, Brussels, European Society of Cardiology, Sophia Antipolis
- O'Flaherty M, Buchan I, Capewell S (2013) Contributions of treatment and lifestyle to declining CVD mortality: Why have CVD mortality rates declined so much since the 1960s? *Heart* 99 (3):159-162
- Parker MG, Thorslund M (2007) Health Trends in the Elderly Population: Getting Better and Getting Worse. *Gerontologist* 47 (2):150-158
- Passa P (2002) Diabetes trends in Europe. *Diabetes/Metabolism Research and Reviews* 18 (S3):S3-S8. doi:10.1002/dmrr.276
- Pérez-López FR, Larrad-Mur L, Kallen A, Chedraui P, Taylor HS (2010) Gender Differences in Cardiovascular Disease: Hormonal and Biochemical Influences. *Reprod Sci*, 17 (6): 511-531
- Picavet HSJ, Hoeymans N (2002) Physical disability in The Netherlands: Prevalence, risk groups and time trends. *Public Health* 116 (4):231-237
- Regidor E, Gutiérrez-Fisac JL, Alfaro M (2009) Indicadores de salud 2009. Evolución de los indicadores de salud en España y su magnitud en el contexto de la Unión Europea. Madrid: Ministerio de Sanidad y Política Social
- Robine J-M (2011) Age Patterns in Adult Mortality. In: Rogers RG, Crimmins EM (eds) *International Handbook of Adult Mortality*, vol 2. *International Handbooks of Population*. Springer Netherlands, pp 207-226. doi:10.1007/978-90-481-9996-9\_10
- Robine J-M, Michel J-P (2004) Looking Forward to a General Theory on Population Aging. *J Gerontol A-Biol* 59 (6):M590-M597
- Robine J-M, Romieu I, Michel J-P (2002) Trends in Health Expectancies. In: *Determining Health Expectancies*. John Wiley & Sons Ltd, 75-101
- Ruiz-Ramos M, Escolar-Pujolar A, Mayoral-Sánchez E, Corral-San Laureano F, Fernández-Fernández I (2006) La diabetes mellitus en España: mortalidad, prevalencia, incidencia, costes económicos y desigualdades. *Gac Sanit* 20 (Supl 1):15-24
- Ruiz-Ramos M, Hermosín Bono T, Gamboa Antiñolo F (2008) Tendencias de la mortalidad por enfermedades cardiovasculares en Andalucía entre 1975 y 2004. *Rev Esp Salud Pública* 82:395-403

- Sagardui-Villamor J, Guallar-Castillón P, García-Ferruelo M, Banegas JR, Rodríguez-Artalejo F (2005) Trends in Disability and Disability-Free Life Expectancy Among Elderly People in Spain: 1986–1999. *J Gerontol A-Biol* 60 (8):1028-1034
- Sans S, Kesteloot H, Kromhout D (1997) The burden of cardiovascular diseases mortality in Europe. *Eur Heart J* 18 (8):1231-1248
- Solé-Auró A, Michaud PC, Hurd M, Crimmins EM (2013) Disease Incidence and Mortality Among Older Americans and European. RAND Labor & Population Working paper
- Solé-Auró A, Crimmins EM (2013) The Oldest Old Health in Europe and the United States. *Annu Rev Gerontol Geriatr* 33 (1):1-33. doi:10.1891/0198-8794.33.3
- Sullivan DF (1971) A single index of mortality and morbidity. Health Services and Mental Health Administration], Rockville, Md
- Valdés S, Rojo-Martínez G, Soriguer F (2007) Evolución de la prevalencia de la diabetes tipo 2 en población adulta española. *Med Clin* 129 (9):352-355
- Vaupel JW, Carey JR, Christensen K, Johnson TE, Yashin AI, Holm NV, Iachine IA, Kannisto V, Khazaeli AA, Liedo P, Longo VD, Zeng Y, Manton KG, Curtsinger JW (1998) Biodemographic Trajectories of Longevity. *Science* 280 (5365):855-860
- WHO (2009) Cardiovascular Diseases. World Health Organization; [http://www.who.int/cardiovascular\\_diseases/priorities/en/index.html](http://www.who.int/cardiovascular_diseases/priorities/en/index.html).
- Wilmoth JR (1997) In Search of Limits. In: Wachter KW, Finch CE (eds) *Between Zeus and the Salmon: The Biodemography of Longevity* The National Academies Press
- Zunzunegui MV, Nuñez O, Durban M, García de Yébenes MJ, Otero A (2006) Decreasing prevalence of disability in activities of daily living, functional limitations and poor self-rated health: a 6-year follow-up study in Spain. *Aging Clin Exp Res* 18 (5):352-358



**Figure 1. Survivors in the life table population**



Source: Life Tables from the Spanish National Statistics Institute

Table 1: Prevalence (percent) of diseases and mobility problems by age and sex in Catalonia (Spain). Individuals aged 15-plus

Age	<i>Hypertension</i>						<i>Diabetes</i>					
	<i>Men</i>			<i>Women</i>			<i>Men</i>			<i>Women</i>		
	1994	2011	Difference	1994	2011	Difference	1994	2011	Difference	1994	2011	Difference
15-29	2.8	3.5	0.7	1.9	3.3	1.4	0.6	0.4	-0.2	0.4	1.0	0.6
30-39	5.7	8.4	2.7	4.9	5.6	0.7	0.9	0.5	-0.4	0.5	2.8	2.3
40-49	10.9	19.6	8.7	10.7	11.6	0.9	2.4	3.2	0.8	3.0	4.5	1.5
50-59	19.2	36.0	16.8	29.8	24.6	-5.2	5.6	11.2	5.6	6.3	5.7	-0.6
60-69	28.2	49.4	21.2	36.8	48.9	12.1	12.3	18.7	6.4	12.5	13.9	1.4
70-79	29.9	53.5	23.6	45.5	62.0	16.5	12.0	22.7	10.7	13.0	15.9	2.9
80+	26.7	50.3	23.6	42.3	68.3	26.0	7.4	22.8	15.4	9.0	22.9	13.9

Age	<i>Heart Diseases</i>						<i>Mobility Limitations</i>					
	<i>Men</i>			<i>Women</i>			<i>Men</i>			<i>Women</i>		
	1994	2011	Difference	1994	2011	Difference	1994	2011	Difference	1994	2011	Difference
15-29	1.5	1.1	-0.4	1.5	1.1	-0.4	0.7	1.4	0.7	0.8	0.8	0.0
30-39	1.9	1.8	-0.1	1.8	1.4	-0.4	1.5	4.0	2.5	1.2	2.5	1.3
40-49	2.5	2.8	0.3	3.9	1.2	-2.7	1.7	2.4	0.7	3.4	8.0	4.6
50-59	7.9	6.0	-1.9	6.2	6.6	0.4	6.8	9.8	3.0	11.9	10.5	-1.4
60-69	13.0	17.8	4.8	11.6	11.3	-0.3	12.6	12.4	-0.2	20.1	19.9	-0.2
70-79	18.9	27.8	8.9	18.5	20.5	2.0	19.0	24.6	5.6	34.3	37.8	3.5
80+	22.7	36.6	13.9	22.6	30.9	8.3	44.5	52.0	7.5	57.4	69.5	12.1

Source: Catalan Health Survey, 1994 and 2011. Survey weights are used in this table.

Table 2: Life expectancy (LE), life expectancy with and without diseases, and life expectancy with and without mobility limitations for men and women: 1994 and 2011

	<i>Men</i>		<i>Women</i>	
	1994	2011	1994	2011
<i>Age 15</i>				
LE	60.2	64.8	67.5	70.7
Without disease	47.1	43.1	48.5	46.6
CI	(46.5, 47.5)	(42.1, 43.9)	(47.7, 49.3)	(45.5, 47.5)
With at least one disease	13.1	21.7	19.0	24.1
% With diseases/LE	22	33	28	34
-----				
Able to function	55.5	57.5	57.6	57.5
CI	(55.1, 55.9)	(56.7, 58.0)	(56.9, 58.1)	(56.7, 58.2)
Unable to function	4.7	7.3	9.9	13.2
% Unable to function/LE	8	11	15	19
<hr/>				
<i>Age 65</i>				
LE	16.2	18.7	20.2	22.7
Without disease	7.7	5.7	8.8	6.3
CI	(8.1, 9.0)	(4.9, 6.3)	(8.1, 9.5)	(5.5, 7.1)
With at least one disease	8.5	13.0	11.4	16.3
% With diseases/LE	52	70	56	72
-----				
Able to function	12.3	13.0	12.1	12.1
CI	(11.9, 12.7)	(12.3, 13.5)	(11.5, 12.6)	(11.3, 12.7)
Unable to function	3.9	5.7	8.1	10.6
% Unable to function/LE	24	30	40	47

Source: Catalan Health Survey, 1994 and 2011. Survey weights are used in this table. LE: Life expectancy. CI: Confidence intervals. Chronic diseases include hypertension, diabetes and heart disease. Mobility limitations include: 1) mobility problems, such as the inability to move out of the house without receiving help from another person, 2) walking problems, that may require using special equipment, and 3) other important mobility limitations, such as the difficulty to walk up and down a flight of stairs, and standing, without using special equipment.

Table 3: Expected age that chronic diseases or mobility limitations appear for men and women: 1994 and 2011

	Men		Women	
	1994	2011	1994	2011
<i>Chronic diseases</i>				
Age 15	62.1	58.1	63.5	61.6
Age 65	72.7	70.7	73.8	71.3
<i>Mobility functioning loss</i>				
Age 15	70.5	72.5	72.6	72.5
Age 65	77.3	78.0	77.1	77.1

Source: Catalan Health Survey, 1994 and 2011. Chronic diseases include hypertension, diabetes and heart disease. Mobility limitations include: 1) mobility problems, such as the inability to move out of the house without receiving help from another person, 2) walking problems, that may require using special equipment, and 3) other important mobility limitations, such as the difficulty to walk up and down a flight of stairs, and standing, without using special equipment.



2006

**CREAP2006-01**

**Matas, A.** (GEAP); **Raymond, J.Ll.** (GEAP)

"Economic development and changes in car ownership patterns"

(Juny 2006)

**CREAP2006-02**

**Trillas, F.** (IEB); **Montolio, D.** (IEB); **Duch, N.** (IEB)

"Productive efficiency and regulatory reform: The case of Vehicle Inspection Services"

(Setembre 2006)

**CREAP2006-03**

**Bel, G.** (PPRE-IREA); **Fageda, X.** (PPRE-IREA)

"Factors explaining local privatization: A meta-regression analysis"

(Octubre 2006)

**CREAP2006-04**

**Fernández-Villadangos, L.** (PPRE-IREA)

"Are two-part tariffs efficient when consumers plan ahead?: An empirical study"

(Octubre 2006)

**CREAP2006-05**

**Artís, M.** (AQR-IREA); **Ramos, R.** (AQR-IREA); **Suriñach, J.** (AQR-IREA)

"Job losses, outsourcing and relocation: Empirical evidence using microdata"

(Octubre 2006)

**CREAP2006-06**

**Alcañiz, M.** (RISC-IREA); **Costa, A.**; **Guillén, M.** (RISC-IREA); **Luna, C.**; **Rovira, C.**

"Calculation of the variance in surveys of the economic climate"

(Novembre 2006)

**CREAP2006-07**

**Albalate, D.** (PPRE-IREA)

"Lowering blood alcohol content levels to save lives: The European Experience"

(Desembre 2006)

**CREAP2006-08**

**Garrido, A.** (IEB); **Arqué, P.** (IEB)

"The choice of banking firm: Are the interest rate a significant criteria?"

(Desembre 2006)

**CREAP2006-09**

**Segarra, A.** (GRIT); **Teruel-Carrizosa, M.** (GRIT)

"Productivity growth and competition in spanish manufacturing firms:

What has happened in recent years?"

(Desembre 2006)

**CREAP2006-10**

**Andonova, V.**; **Díaz-Serrano, Luis.** (CREB)

"Political institutions and the development of telecommunications"

(Desembre 2006)

**CREAP2006-11**

**Raymond, J.L.**(GEAP); **Roig, J.L.** (GEAP)

"Capital humano: un análisis comparativo Catalunya-España"

(Desembre 2006)

**CREAP2006-12**

**Rodríguez, M.**(CREB); **Stoyanova, A.** (CREB)

"Changes in the demand for private medical insurance following a shift in tax incentives"

(Desembre 2006)

**CREAP2006-13**

**Royuela, V.** (AQR-IREA); **Lambiri, D.**; **Biagi, B.**

"Economía urbana y calidad de vida. Una revisión del estado del conocimiento en España"

(Desembre 2006)



**CREAP2006-14**

**Camarero, M.; Carrion-i-Silvestre, J.LL. (AQR-IREA); Tamarit, C.**

"New evidence of the real interest rate parity for OECD countries using panel unit root tests with breaks"  
(Desembre 2006)

**CREAP2006-15**

**Karanassou, M.; Sala, H. (GEAP); Snower, D. J.**

"The macroeconomics of the labor market: Three fundamental views"  
(Desembre 2006)

**2007**

**XREAP2007-01**

**Castany, L. (AQR-IREA); López-Bazo, E. (AQR-IREA); Moreno, R. (AQR-IREA)**

"Decomposing differences in total factor productivity across firm size"  
(Març 2007)

**XREAP2007-02**

**Raymond, J. Ll. (GEAP); Roig, J. Ll. (GEAP)**

"Una propuesta de evaluación de las externalidades de capital humano en la empresa"  
(Abril 2007)

**XREAP2007-03**

**Durán, J. M. (IEB); Esteller, A. (IEB)**

"An empirical analysis of wealth taxation: Equity vs. Tax compliance"  
(Juny 2007)

**XREAP2007-04**

**Matas, A. (GEAP); Raymond, J.Ll. (GEAP)**

"Cross-section data, disequilibrium situations and estimated coefficients: evidence from car ownership demand"  
(Juny 2007)

**XREAP2007-05**

**Jofre-Montseny, J. (IEB); Solé-Ollé, A. (IEB)**

"Tax differentials and agglomeration economies in intraregional firm location"  
(Juny 2007)

**XREAP2007-06**

**Álvarez-Albelo, C. (CREB); Hernández-Martín, R.**

"Explaining high economic growth in small tourism countries with a dynamic general equilibrium model"  
(Juliol 2007)

**XREAP2007-07**

**Duch, N. (IEB); Montolio, D. (IEB); Mediavilla, M.**

"Evaluating the impact of public subsidies on a firm's performance: a quasi-experimental approach"  
(Juliol 2007)

**XREAP2007-08**

**Segarra-Blasco, A. (GRIT)**

"Innovation sources and productivity: a quantile regression analysis"  
(Octubre 2007)

**XREAP2007-09**

**Albalade, D. (PPRE-IREA)**

"Shifting death to their Alternatives: The case of Toll Motorways"  
(Octubre 2007)

**XREAP2007-10**

**Segarra-Blasco, A. (GRIT); Garcia-Quevedo, J. (IEB); Teruel-Carrizosa, M. (GRIT)**

"Barriers to innovation and public policy in catalonia"  
(Novembre 2007)

**XREAP2007-11**

**Bel, G. (PPRE-IREA); Foote, J.**

"Comparison of recent toll road concession transactions in the United States and France"  
(Novembre 2007)



**XREAP2007-12**

**Segarra-Blasco, A.** (GRIT);

“Innovation, R&D spillovers and productivity: the role of knowledge-intensive services”  
(Novembre 2007)

**XREAP2007-13**

**Bermúdez Morata, Ll.** (RFA-IREA); **Guillén Estany, M.** (RFA-IREA), **Solé Auró, A.** (RFA-IREA)

“Impacto de la inmigración sobre la esperanza de vida en salud y en discapacidad de la población española”  
(Novembre 2007)

**XREAP2007-14**

**Calaeys, P.** (AQR-IREA); **Ramos, R.** (AQR-IREA), **Suriñach, J.** (AQR-IREA)

“Fiscal sustainability across government tiers”  
(Desembre 2007)

**XREAP2007-15**

**Sánchez Hugalbe, A.** (IEB)

“Influencia de la inmigración en la elección escolar”  
(Desembre 2007)

**2008**

**XREAP2008-01**

**Durán Weitkamp, C.** (GRIT); **Martín Bofarull, M.** (GRIT) ; **Pablo Martí, F.**

“Economic effects of road accessibility in the Pyrenees: User perspective”  
(Gener 2008)

**XREAP2008-02**

**Díaz-Serrano, L.;** **Stoyanova, A. P.** (CREB)

“The Causal Relationship between Individual’s Choice Behavior and Self-Reported Satisfaction: the Case of Residential Mobility in the EU”  
(Març 2008)

**XREAP2008-03**

**Matas, A.** (GEAP); **Raymond, J. L.** (GEAP); **Roig, J. L.** (GEAP)

“Car ownership and access to jobs in Spain”  
(Abril 2008)

**XREAP2008-04**

**Bel, G.** (PPRE-IREA) ; **Fageda, X.** (PPRE-IREA)

“Privatization and competition in the delivery of local services: An empirical examination of the dual market hypothesis”  
(Abril 2008)

**XREAP2008-05**

**Matas, A.** (GEAP); **Raymond, J. L.** (GEAP); **Roig, J. L.** (GEAP)

“Job accessibility and employment probability”  
(Maig 2008)

**XREAP2008-06**

**Basher, S. A.;** **Carrión, J. Ll.** (AQR-IREA)

Deconstructing Shocks and Persistence in OECD Real Exchange Rates  
(Juny 2008)

**XREAP2008-07**

**Sanromá, E.** (IEB); **Ramos, R.** (AQR-IREA); **Simón, H.**

Portabilidad del capital humano y asimilación de los inmigrantes. Evidencia para España  
(Juliol 2008)

**XREAP2008-08**

**Basher, S. A.;** **Carrión, J. Ll.** (AQR-IREA)

Price level convergence, purchasing power parity and multiple structural breaks: An application to US cities  
(Juliol 2008)

**XREAP2008-09**

**Bermúdez, Ll.** (RFA-IREA)

A priori ratemaking using bivariate poisson regression models  
(Juliol 2008)



**XREAP2008-10**

**Solé-Ollé, A.** (IEB), **Hortas Rico, M.** (IEB)

Does urban sprawl increase the costs of providing local public services? Evidence from Spanish municipalities  
(Novembre 2008)

**XREAP2008-11**

**Teruel-Carrizosa, M.** (GRIT), **Segarra-Blasco, A.** (GRIT)

Immigration and Firm Growth: Evidence from Spanish cities  
(Novembre 2008)

**XREAP2008-12**

**Duch-Brown, N.** (IEB), **García-Quevedo, J.** (IEB), **Montolio, D.** (IEB)

Assessing the assignation of public subsidies: Do the experts choose the most efficient R&D projects?  
(Novembre 2008)

**XREAP2008-13**

**Bilotkach, V., Fageda, X.** (PPRE-IREA), **Flores-Fillol, R.**

Scheduled service versus personal transportation: the role of distance  
(Desembre 2008)

**XREAP2008-14**

**Albalate, D.** (PPRE-IREA), **Gel, G.** (PPRE-IREA)

Tourism and urban transport: Holding demand pressure under supply constraints  
(Desembre 2008)

**2009**

**XREAP2009-01**

**Calonge, S.** (CREB); **Tejada, O.**

“A theoretical and practical study on linear reforms of dual taxes”  
(Febrer 2009)

**XREAP2009-02**

**Albalate, D.** (PPRE-IREA); **Fernández-Villadangos, L.** (PPRE-IREA)

“Exploring Determinants of Urban Motorcycle Accident Severity: The Case of Barcelona”  
(Març 2009)

**XREAP2009-03**

**Borrell, J. R.** (PPRE-IREA); **Fernández-Villadangos, L.** (PPRE-IREA)

“Assessing excess profits from different entry regulations”  
(Abril 2009)

**XREAP2009-04**

**Sanromá, E.** (IEB); **Ramos, R.** (AQR-IREA), **Simon, H.**

“Los salarios de los inmigrantes en el mercado de trabajo español. ¿Importa el origen del capital humano?”  
(Abril 2009)

**XREAP2009-05**

**Jiménez, J. L.; Perdiguero, J.** (PPRE-IREA)

“(No)competition in the Spanish retailing gasoline market: a variance filter approach”  
(Maig 2009)

**XREAP2009-06**

**Álvarez-Albelo, C. D.** (CREB), **Manresa, A.** (CREB), **Pigem-Vigo, M.** (CREB)

“International trade as the sole engine of growth for an economy”  
(Juny 2009)

**XREAP2009-07**

**Callejón, M.** (PPRE-IREA), **Ortún V, M.**

“The Black Box of Business Dynamics”  
(Setembre 2009)

**XREAP2009-08**

**Lucena, A.** (CREB)

“The antecedents and innovation consequences of organizational search: empirical evidence for Spain”  
(Octubre 2009)





**XREAP2009-09**

**Domènech Campmajó, L.** (PPRE-IREA)  
“Competition between TV Platforms”  
(Octubre 2009)

**XREAP2009-10**

**Solé-Auró, A.** (RFA-IREA), **Guillén, M.** (RFA-IREA), **Crimmins, E. M.**  
“Health care utilization among immigrants and native-born populations in 11 European countries. Results from the Survey of Health, Ageing and Retirement in Europe”  
(Octubre 2009)

**XREAP2009-11**

**Segarra, A.** (GRIT), **Teruel, M.** (GRIT)  
“Small firms, growth and financial constraints”  
(Octubre 2009)

**XREAP2009-12**

**Matas, A.** (GEAP), **Raymond, J.Ll.** (GEAP), **Ruiz, A.** (GEAP)  
“Traffic forecasts under uncertainty and capacity constraints”  
(Novembre 2009)

**XREAP2009-13**

**Sole-Ollé, A.** (IEB)  
“Inter-regional redistribution through infrastructure investment: tactical or programmatic?”  
(Novembre 2009)

**XREAP2009-14**

**Del Barrio-Castro, T.**, **García-Quevedo, J.** (IEB)  
“The determinants of university patenting: Do incentives matter?”  
(Novembre 2009)

**XREAP2009-15**

**Ramos, R.** (AQR-IREA), **Suriñach, J.** (AQR-IREA), **Artís, M.** (AQR-IREA)  
“Human capital spillovers, productivity and regional convergence in Spain”  
(Novembre 2009)

**XREAP2009-16**

**Álvarez-Albelo, C. D.** (CREB), **Hernández-Martín, R.**  
“The commons and anti-commons problems in the tourism economy”  
(Desembre 2009)

**2010**

**XREAP2010-01**

**García-López, M. A.** (GEAP)  
“The Accessibility City. When Transport Infrastructure Matters in Urban Spatial Structure”  
(Febrer 2010)

**XREAP2010-02**

**García-Quevedo, J.** (IEB), **Mas-Verdú, F.** (IEB), **Polo-Otero, J.** (IEB)  
“Which firms want PhDs? The effect of the university-industry relationship on the PhD labour market”  
(Març 2010)

**XREAP2010-03**

**Pitt, D.**, **Guillén, M.** (RFA-IREA)  
“An introduction to parametric and non-parametric models for bivariate positive insurance claim severity distributions”  
(Març 2010)

**XREAP2010-04**

**Bermúdez, Ll.** (RFA-IREA), **Karlis, D.**  
“Modelling dependence in a ratemaking procedure with multivariate Poisson regression models”  
(Abril 2010)

**XREAP2010-05**

**Di Paolo, A.** (IEB)  
“Parental education and family characteristics: educational opportunities across cohorts in Italy and Spain”  
(Maig 2010)



**XREAP2010-06**

**Simón, H.** (IEB), **Ramos, R.** (AQR-IREA), **Sanromá, E.** (IEB)

“Movilidad ocupacional de los inmigrantes en una economía de bajas cualificaciones. El caso de España”  
(Juny 2010)

**XREAP2010-07**

**Di Paolo, A.** (GEAP & IEB), **Raymond, J. Ll.** (GEAP & IEB)

“Language knowledge and earnings in Catalonia”  
(Juliol 2010)

**XREAP2010-08**

**Bolancé, C.** (RFA-IREA), **Alemany, R.** (RFA-IREA), **Guillén, M.** (RFA-IREA)

“Prediction of the economic cost of individual long-term care in the Spanish population”  
(Setembre 2010)

**XREAP2010-09**

**Di Paolo, A.** (GEAP & IEB)

“Knowledge of catalan, public/private sector choice and earnings: Evidence from a double sample selection model”  
(Setembre 2010)

**XREAP2010-10**

**Coad, A., Segarra, A.** (GRIT), **Teruel, M.** (GRIT)

“Like milk or wine: Does firm performance improve with age?”  
(Setembre 2010)

**XREAP2010-11**

**Di Paolo, A.** (GEAP & IEB), **Raymond, J. Ll.** (GEAP & IEB), **Calero, J.** (IEB)

“Exploring educational mobility in Europe”  
(Octubre 2010)

**XREAP2010-12**

**Borrell, A.** (GiM-IREA), **Fernández-Villadangos, L.** (GiM-IREA)

“Clustering or scattering: the underlying reason for regulating distance among retail outlets”  
(Desembre 2010)

**XREAP2010-13**

**Di Paolo, A.** (GEAP & IEB)

“School composition effects in Spain”  
(Desembre 2010)

**XREAP2010-14**

**Fageda, X.** (GiM-IREA), **Flores-Fillol, R.**

“Technology, Business Models and Network Structure in the Airline Industry”  
(Desembre 2010)

**XREAP2010-15**

**Albalade, D.** (GiM-IREA), **Bel, G.** (GiM-IREA), **Fageda, X.** (GiM-IREA)

“Is it Redistribution or Centralization? On the Determinants of Government Investment in Infrastructure”  
(Desembre 2010)

**XREAP2010-16**

**Oppedisano, V., Turati, G.**

“What are the causes of educational inequalities and of their evolution over time in Europe? Evidence from PISA”  
(Desembre 2010)

**XREAP2010-17**

**Canova, L., Vaglio, A.**

“Why do educated mothers matter? A model of parental help”  
(Desembre 2010)

**2011**

**XREAP2011-01**

**Fageda, X.** (GiM-IREA), **Perdiguer, J.** (GiM-IREA)

“An empirical analysis of a merger between a network and low-cost airlines”  
(Maig 2011)



**XREAP2011-02**

**Moreno-Torres, I.** (ACCO, CRES & GiM-IREA)

“What if there was a stronger pharmaceutical price competition in Spain? When regulation has a similar effect to collusion”  
(Maig 2011)

**XREAP2011-03**

**Miguélez, E.** (AQR-IREA); **Gómez-Miguélez, I.**

“Singling out individual inventors from patent data”  
(Maig 2011)

**XREAP2011-04**

**Moreno-Torres, I.** (ACCO, CRES & GiM-IREA)

“Generic drugs in Spain: price competition vs. moral hazard”  
(Maig 2011)

**XREAP2011-05**

**Nieto, S.** (AQR-IREA), **Ramos, R.** (AQR-IREA)

“¿Afecta la sobreeducación de los padres al rendimiento académico de sus hijos?”  
(Maig 2011)

**XREAP2011-06**

**Pitt, D., Guillén, M.** (RFA-IREA), **Bolancé, C.** (RFA-IREA)

“Estimation of Parametric and Nonparametric Models for Univariate Claim Severity Distributions - an approach using R”  
(Juny 2011)

**XREAP2011-07**

**Guillén, M.** (RFA-IREA), **Comas-Herrera, A.**

“How much risk is mitigated by LTC Insurance? A case study of the public system in Spain”  
(Juny 2011)

**XREAP2011-08**

**Ayuso, M.** (RFA-IREA), **Guillén, M.** (RFA-IREA), **Bolancé, C.** (RFA-IREA)

“Loss risk through fraud in car insurance”  
(Juny 2011)

**XREAP2011-09**

**Duch-Brown, N.** (IEB), **García-Quevedo, J.** (IEB), **Montolio, D.** (IEB)

“The link between public support and private R&D effort: What is the optimal subsidy?”  
(Juny 2011)

**XREAP2011-10**

**Bermúdez, Ll.** (RFA-IREA), **Karlis, D.**

“Mixture of bivariate Poisson regression models with an application to insurance”  
(Juliol 2011)

**XREAP2011-11**

**Varela-Irimia, X-L.** (GRIT)

“Age effects, unobserved characteristics and hedonic price indexes: The Spanish car market in the 1990s”  
(Agost 2011)

**XREAP2011-12**

**Bermúdez, Ll.** (RFA-IREA), **Ferri, A.** (RFA-IREA), **Guillén, M.** (RFA-IREA)

“A correlation sensitivity analysis of non-life underwriting risk in solvency capital requirement estimation”  
(Setembre 2011)

**XREAP2011-13**

**Guillén, M.** (RFA-IREA), **Pérez-Marín, A.** (RFA-IREA), **Alcañiz, M.** (RFA-IREA)

“A logistic regression approach to estimating customer profit loss due to lapses in insurance”  
(Octubre 2011)

**XREAP2011-14**

**Jiménez, J. L., Perdiguero, J.** (GiM-IREA), **García, C.**

“Evaluation of subsidies programs to sell green cars: Impact on prices, quantities and efficiency”  
(Octubre 2011)

**XREAP2011-15**

**Arespa, M.** (CREB)

“A New Open Economy Macroeconomic Model with Endogenous Portfolio Diversification and Firms Entry”  
(Octubre 2011)



**XREAP2011-16**

**Matas, A.** (GEAP), **Raymond, J. L.** (GEAP), **Roig, J.L.** (GEAP)  
“The impact of agglomeration effects and accessibility on wages”  
(Novembre 2011)

**XREAP2011-17**

**Segarra, A.** (GRIT)  
“R&D cooperation between Spanish firms and scientific partners: what is the role of tertiary education?”  
(Novembre 2011)

**XREAP2011-18**

**García-Pérez, J. I.; Hidalgo-Hidalgo, M.; Robles-Zurita, J. A.**  
“Does grade retention affect achievement? Some evidence from PISA”  
(Novembre 2011)

**XREAP2011-19**

**Arespa, M.** (CREB)  
“Macroeconomics of extensive margins: a simple model”  
(Novembre 2011)

**XREAP2011-20**

**García-Quevedo, J.** (IEB), **Pellegrino, G.** (IEB), **Vivarelli, M.**  
“The determinants of YICs’ R&D activity”  
(Desembre 2011)

**XREAP2011-21**

**González-Val, R.** (IEB), **Olmo, J.**  
“Growth in a Cross-Section of Cities: Location, Increasing Returns or Random Growth?”  
(Desembre 2011)

**XREAP2011-22**

**Gombau, V.** (GRIT), **Segarra, A.** (GRIT)  
“The Innovation and Imitation Dichotomy in Spanish firms: do absorptive capacity and the technological frontier matter?”  
(Desembre 2011)

**2012**

**XREAP2012-01**

**Borrell, J. R.** (GiM-IREA), **Jiménez, J. L., García, C.**  
“Evaluating Antitrust Leniency Programs”  
(Gener 2012)

**XREAP2012-02**

**Ferri, A.** (RFA-IREA), **Guillén, M.** (RFA-IREA), **Bermúdez, Ll.** (RFA-IREA)  
“Solvency capital estimation and risk measures”  
(Gener 2012)

**XREAP2012-03**

**Ferri, A.** (RFA-IREA), **Bermúdez, Ll.** (RFA-IREA), **Guillén, M.** (RFA-IREA)  
“How to use the standard model with own data”  
(Febrer 2012)

**XREAP2012-04**

**Perdiguero, J.** (GiM-IREA), **Borrell, J.R.** (GiM-IREA)  
“Driving competition in local gasoline markets”  
(Març 2012)

**XREAP2012-05**

D’Amico, G., **Guillen, M.** (RFA-IREA), Manca, R.  
“Discrete time Non-homogeneous Semi-Markov Processes applied to Models for Disability Insurance”  
(Març 2012)

**XREAP2012-06**

**Bové-Sans, M. A.** (GRIT), Laguardo-Ramírez, R.  
“Quantitative analysis of image factors in a cultural heritage tourist destination”  
(Abril 2012)



**XREAP2012-07**

**Tello, C.** (AQR-IREA), **Ramos, R.** (AQR-IREA), **Artís, M.** (AQR-IREA)

“Changes in wage structure in Mexico going beyond the mean: An analysis of differences in distribution, 1987-2008”  
(Maig 2012)

**XREAP2012-08**

**Jofre-Monseny, J.** (IEB), **Marín-López, R.** (IEB), **Viladecans-Marsal, E.** (IEB)

“What underlies localization and urbanization economies? Evidence from the location of new firms”  
(Maig 2012)

**XREAP2012-09**

**Muñiz, I.** (GEAP), **Calatayud, D.**, **Dobaño, R.**

“Los límites de la compacidad urbana como instrumento a favor de la sostenibilidad. La hipótesis de la compensación en Barcelona medida a través de la huella ecológica de la movilidad y la vivienda”  
(Maig 2012)

**XREAP2012-10**

**Arqué-Castells, P.** (GEAP), **Mohnen, P.**

“Sunk costs, extensive R&D subsidies and permanent inducement effects”  
(Maig 2012)

**XREAP2012-11**

**Boj, E.** (CREB), **Delicado, P.**, **Fortiana, J.**, **Esteve, A.**, **Caballé, A.**

“Local Distance-Based Generalized Linear Models using the dbstats package for R”  
(Maig 2012)

**XREAP2012-12**

**Royuela, V.** (AQR-IREA)

“What about people in European Regional Science?”  
(Maig 2012)

**XREAP2012-13**

**Osorio A. M.** (RFA-IREA), **Bolancé, C.** (RFA-IREA), **Madise, N.**

“Intermediary and structural determinants of early childhood health in Colombia: exploring the role of communities”  
(Juny 2012)

**XREAP2012-14**

**Miguelé, E.** (AQR-IREA), **Moreno, R.** (AQR-IREA)

“Do labour mobility and networks foster geographical knowledge diffusion? The case of European regions”  
(Juliol 2012)

**XREAP2012-15**

**Teixidó-Figueras, J.** (GRIT), **Duró, J. A.** (GRIT)

“Ecological Footprint Inequality: A methodological review and some results”  
(Setembre 2012)

**XREAP2012-16**

**Varela-Irimia, X-L.** (GRIT)

“Profitability, uncertainty and multi-product firm product proliferation: The Spanish car industry”  
(Setembre 2012)

**XREAP2012-17**

**Duró, J. A.** (GRIT), **Teixidó-Figueras, J.** (GRIT)

“Ecological Footprint Inequality across countries: the role of environment intensity, income and interaction effects”  
(Octubre 2012)

**XREAP2012-18**

**Manresa, A.** (CREB), **Sancho, F.**

“Leontief versus Ghosh: two faces of the same coin”  
(Octubre 2012)

**XREAP2012-19**

**Alemany, R.** (RFA-IREA), **Bolancé, C.** (RFA-IREA), **Guillén, M.** (RFA-IREA)

“Nonparametric estimation of Value-at-Risk”  
(Octubre 2012)



**XREAP2012-20**

**Herrera-Idárraga, P.** (AQR-IREA), **López-Bazo, E.** (AQR-IREA), **Motellón, E.** (AQR-IREA)

“Informality and overeducation in the labor market of a developing country”  
(Novembre 2012)

**XREAP2012-21**

**Di Paolo, A.** (AQR-IREA)

“(Endogenous) occupational choices and job satisfaction among recent PhD recipients: evidence from Catalonia”  
(Desembre 2012)

**2013**

**XREAP2013-01**

**Segarra, A.** (GRIT), **García-Quevedo, J.** (IEB), **Teruel, M.** (GRIT)

“Financial constraints and the failure of innovation projects”  
(Març 2013)

**XREAP2013-02**

**Osorio, A. M.** (RFA-IREA), **Bolancé, C.** (RFA-IREA), **Madise, N.**, **Rathmann, K.**

“Social Determinants of Child Health in Colombia: Can Community Education Moderate the Effect of Family Characteristics?”  
(Març 2013)

**XREAP2013-03**

**Teixidó-Figueras, J.** (GRIT), **Duró, J. A.** (GRIT)

“The building blocks of international ecological footprint inequality: a regression-based decomposition”  
(Abril 2013)

**XREAP2013-04**

**Salcedo-Sanz, S.**, **Carro-Calvo, L.**, **Claramunt, M.** (CREB), **Castañer, A.** (CREB), **Marmol, M.** (CREB)

“An Analysis of Black-box Optimization Problems in Reinsurance: Evolutionary-based Approaches”  
(Maig 2013)

**XREAP2013-05**

**Alcañiz, M.** (RFA), **Guillén, M.** (RFA), **Sánchez-Moscona, D.** (RFA), **Santolino, M.** (RFA), **Llatje, O.**, **Ramon, Ll.**

“Prevalence of alcohol-impaired drivers based on random breath tests in a roadside survey”  
(Juliol 2013)

**XREAP2013-06**

**Matas, A.** (GEAP & IEB), **Raymond, J. Ll.** (GEAP & IEB), **Roig, J. L.** (GEAP)

“How market access shapes human capital investment in a peripheral country”  
(Octubre 2013)

**XREAP2013-07**

**Di Paolo, A.** (AQR-IREA), **Tansel, A.**

“Returns to Foreign Language Skills in a Developing Country: The Case of Turkey”  
(Novembre 2013)

**XREAP2013-08**

**Fernández Gual, V.** (GRIT), **Segarra, A.** (GRIT)

“The Impact of Cooperation on R&D, Innovation and Productivity: an Analysis of Spanish Manufacturing and Services Firms”  
(Novembre 2013)

**XREAP2013-09**

**Bahraoui, Z.** (RFA); **Bolancé, C.** (RFA); **Pérez-Marín, A. M.** (RFA)

“Testing extreme value copulas to estimate the quantile”  
(Novembre 2013)

**2014**

**XREAP2014-01**

**Solé-Auró, A.** (RFA), **Alcañiz, M.** (RFA)

“Are we living longer but less healthy? Trends in mortality and morbidity in Catalonia (Spain), 1994-2011”  
(Gener 2014)



[xarxa.xreap@gmail.com](mailto:xarxa.xreap@gmail.com)