

## ACCEPTED ARTICLE PREVIEW

Accepted Article Preview: Published ahead of advance online publication

**Patterns of childhood body mass index (BMI), overweight and obesity in South Asian and black participants in the English National child measurement programme: Effect of applying BMI adjustments standardizing for ethnic differences in BMI-body fatness associations**

M T Hudda, C M Nightingale, A S Donin, C G Owen, A R Rudnicka, J C K Wells, H Rutter, D G Cook, P H Whincup

**Cite this article as:** M T Hudda, C M Nightingale, A S Donin, C G Owen, A R Rudnicka, J C K Wells, H Rutter, D G Cook, P H Whincup, Patterns of childhood body mass index (BMI), overweight and obesity in South Asian and black participants in the English National child measurement programme: Effect of applying BMI adjustments standardizing for ethnic differences in BMI-body fatness associations, *International Journal of Obesity* accepted article preview 2 November 2017; doi: [10.1038/ijo.2017.272](https://doi.org/10.1038/ijo.2017.272).

This is a PDF file of an unedited peer-reviewed manuscript that has been accepted for publication. NPG are providing this early version of the manuscript as a service to our customers. The manuscript will undergo copyediting, typesetting and a proof review before it is published in its final form. Please note that during the production process errors may be discovered which could affect the content, and all legal disclaimers apply.

This work is licensed under a Creative Commons Attribution 4.0 International License. The images or other third party material in this article are included in the article's Creative Commons license, unless indicated otherwise in the credit line; if the material is not included under the Creative Commons license, users will need to obtain permission from the license holder to reproduce the material. To view a copy of this license, visit <http://creativecommons.org/licenses/by/4.0/>

Received 19 April 2017; revised 8 September 2017; accepted 16 October 2017;  
Accepted article preview online 2 November 2017

**Patterns of childhood body mass index (BMI), overweight and obesity in South Asian and Black participants in the English National Child Measurement Programme: effect of applying BMI adjustments standardizing for ethnic differences in BMI-body fatness associations**

Mohammed T Hudda MSc<sup>1</sup>, Claire M Nightingale PhD<sup>1</sup>, Angela S Donin PhD<sup>1</sup>, Christopher G Owen PhD<sup>1</sup>, Alicja R Rudnicka PhD<sup>1</sup>, Jonathan C K Wells PhD<sup>2</sup>, Harry Rutter MB BChir<sup>3</sup>, Derek G Cook PhD<sup>1</sup>, Peter H Whincup FRCP<sup>1</sup>

1 Population Health Research Institute, St George's, University of London, London, UK

2 Childhood Nutrition Research Centre, Population, Policy and Practice Programme, UCL Great Ormond Street Institute of Child Health, London, UK

3 ECOHOST – The Centre for Health and Social Change, London School of Hygiene and Tropical Medicine, London, UK

**Correspondence to:**

Mr Mohammed Hudda

Population Health Research Institute,

St George's, University of London,

Cranmer Terrace,

London SW17 0RE

Email: mhudda@sgul.ac.uk

Tel: (+44) 208 725 5553

**Conflict of Interests:**

We declare no competing interests

**ABSTRACT:**

**Background:** The National Child Measurement Programme (NCMP) records weight and height and assesses overweight-obesity patterns in English children using body mass index (BMI), which tends to underestimate body fatness in South Asian children and overestimate body fatness in Black children of presumed African ethnicity. Using BMI adjustments to ensure that adjusted BMI was similarly related to body fatness in South Asian, Black and White children, we reassessed population overweight and obesity patterns in these ethnic groups in NCMP.

**Methods:** Analyses were based on 2012-2013 NCMP data in 582,899 children aged 4-5 years and 485,362 children aged 10-11 years. Standard centile-based approaches defined weight status in each age-group before and after applying BMI adjustments for English South Asian and Black children derived from previous studies using the deuterium dilution method.

**Findings:** Among White children, overweight-obesity prevalences (boys, girls) were 23% and 21% respectively in 4-5 year-olds and 33% and 30% respectively in 10-11 year-olds. Before adjustment, South Asian children had lower overweight-obesity prevalences at 4-5 years (19%, 19%) and slightly higher prevalences at 10-11 years (42%, 34%), while Black children had higher overweight-obesity prevalences both at 4-5 years (31%, 29%) and 10-11 years (42%, 45%). Following adjustment, overweight-obesity prevalences were markedly higher in South Asian children both at 4-5 years (39%, 35%) and at 10-11 years (52%, 44%), while Black children had lower prevalences at 4-5 years (11%, 12%); at 10-11 years, prevalences were slightly lower in boys (32%) but higher in girls (35%).

**Interpretation:** BMI adjustments revealed extremely high overweight-obesity prevalences among South Asian children in England, which were not apparent in unadjusted data. In contrast, after adjustment, Black children had lower overweight-obesity prevalences except among older girls.

**Funding:** British Heart Foundation, NIHR CLAHRC (South London), NIHR CLAHRC (North Thames).

## **INTRODUCTION**

Childhood obesity is a major public health problem both globally (1) and in England, where approximately one-third of children aged 2-15 years were recently reported to be overweight or obese using body mass index [BMI] (2). Childhood overweight-obesity is associated with adult overweight-obesity (3), and with higher risks of type 2 diabetes and cardiovascular disease (4-6). Overweight-obesity in English South Asian and Black children of African origin is of particular concern; both ethnic groups have high type 2 diabetes and cardiovascular disease risks in adulthood (7-10), originating in childhood (11, 12).

Accurate assessment of overweight-obesity prevalence in English South Asian and Black children is therefore important. Most national surveys, including the National Child Measurement Programme (NCMP) and the Health Survey for England (2, 13), use BMI to categorise overweight and obesity identically in all ethnic groups. However, the relations between BMI and body fatness differ by ethnicity both in adults and children. Asian adults tend to have a lower BMI for a given body fatness than Whites (14). Among English children, more specifically, BMI systematically underestimates body fatness in South Asians and overestimates it in Blacks (15, 16). We recently developed ethnic-specific BMI adjustments, which provide adjusted BMI values for South Asian and Black children which have the same relation to body fatness as in White children (17). In this report, we have applied these BMI adjustments to recent NCMP data to obtain an improved picture of the burdens of body fatness, as reflected in adjusted overweight-obesity prevalences in South Asian and Black children and in the English child population as a whole.

## **METHODS**

### **National Child Measurement Programme (NCMP)**

#### **Participants**

The NCMP is an annual survey of the weights and heights of English children aged 4-5 years (Reception year) and 10-11 years (Year 6) carried out since 2006-7, currently directed by Public Health England; data collection is conducted by Local Authority (LA) public health departments (18).

All state primary schools in England (n ~ 17,000) are invited to participate; within participating schools, all relevant pupils are invited to participate on an opt-out basis. This report is based on the 2012/13 survey, the most recent for which relevant information including pupil ethnicity was available from the Health and Social Care Information Centre (HSCIC), now NHS Digital. Overall, 93% of eligible children participated (13).

### **Data collection**

Weight and height were measured by assessment teams recruited, trained and supervised by LA public health departments. Public Health England provided detailed instructions on instrument choice and calibration (requiring the use of annually checked Class III weight scales) and measurements, made without shoes in light indoor clothing. Weight was measured to the nearest 0.1kg and height with the child's heels together and the head in the Frankfurt plane to the nearest 0.1cm. BMI was calculated as  $\text{weight}/\text{height}^2$ . School record information on name, date of birth, sex and parentally-defined ethnicity was collected. Data were entered using the NCMP IT system and collated by HSCIC.

### **NCMP BMI category definitions**

The NCMP uses the British 1990 child growth reference population (UK90) to assign each child a BMI centile taking into account their height, weight, sex and age (18, 19). Children are classified using population level thresholds as underweight (2nd centile or below), healthy weight (above 2nd centile, below 85th centile), overweight (on or above the 85th centile and below the 95th centile), or obese (on or above the 95th centile). 'Overweight-obesity' combines children who are overweight or obese (on or above the 85th centile). These population level thresholds follow standard NCMP reporting practice (18). More extreme clinical BMI centile thresholds identify children who are overweight (on or above the 91<sup>st</sup> centile, up to the 98<sup>th</sup> centile) or obese (on or above the 98<sup>th</sup> centile) as a basis for informing parents of their child's weight status (18). Clinical 'overweight-obesity' refers to children on or above the 91<sup>st</sup> BMI centile.

**Ethnicity**

Ethnicity was defined using the National Health Service classification (20). For the present analyses, children identified as 'White British', 'White Irish' and 'any other White background' were grouped as 'White'. Children identified as 'Black African', 'Black Caribbean' or 'any other Black background' were of presumed African origin and grouped together as 'Black'. Children of 'Indian', 'Pakistani' or 'Bangladeshi' origin were grouped as 'South Asian'. Children of 'Chinese' or 'Asian other' origins were grouped as 'Other Asian'. Children of 'any other ethnic background' and 'mixed ethnicity' were grouped as 'Other Ethnicity'. Children with missing ethnicity data formed a separate category of "Unknown".

**Adjusted BMI values for Black and South Asian children**

Ethnic-specific BMI adjustments for Black and South Asian children were derived using pooled data from four recent studies which used the deuterium dilution reference method to assess fat free mass (and indirectly fat mass) in Black, South Asian and White children aged 4-12 years (17). BMI adjustments were derived using sex-stratified regression models which ensured that adjusted BMI values were associated with fat mass (based on the reference method and expressed as a height independent fat mass index [fat mass/height<sup>5</sup>]) in the same way as in Whites (17). Regression models were adjusted for ethnic group and age group (in 3-year age groups [4.0–6.9, 7.0–9.9 and 10.0–12.9 years]) to provide robust and stable estimates. Model building was conducted using a stepwise forwards approach; two-way interaction terms between FMI, ethnic group and age group were included in the model and three way interactions were only considered if their corresponding two-way interactions were statistically significant at the 5% significance level (17). For South Asian children, single sex-specific positive BMI adjustments of +1.12 kg/m<sup>2</sup> for boys and +1.07 kg/m<sup>2</sup> for girls were applicable for all age-groups and body fatness levels. For Black children, negative BMI adjustments were needed which were modified by age and body fatness (Supplementary Table 1). Fuller details are provided in a previous report (17).

**Statistical analysis**

The distributions of weight, height and BMI were reviewed for outliers. BMI was positively skewed and therefore medians rather than means were presented. Median BMI and the prevalences of specific BMI categories (underweight, normal weight, overweight, obese) defined using the UK90 (19) were determined for each ethnic group and for all participants before and after the application of BMI adjustments. Mann-Whitney U tests were used to compare the distributions of BMI (or adjusted BMI) and indirectly to compare the differences in medians; z-tests for differences in proportions were used to compare prevalences of overweight-obesity between each of the ethnic minority groups and the White children. The prevalence of overweight-obesity was also determined for each LA in England to allow geographical comparisons to be made (including both prevalence and prevalence rankings) before and after BMI adjustment.

### **Role of the funding source**

The funder had no role in the study design, data analysis, data interpretation, or writing of the report. The authors had full access to all the data in the study and had final responsibility to submit the manuscript for publication.

## **RESULTS**

### **Participants and data exclusions**

In the 2012-13 school year, 1,076,824 children participated in NCMP. Of these, we excluded 8563 children (0.01%) from analyses. Four children had implausible weight or height values and 324 children were outside the study age-range. A further 8235 children who were measured in LAs identified by NCMP as having data quality concerns (Redcar-Cleveland, Torbay and Middlesbrough) were excluded. Children from one further area (Bassetlaw) flagged up by NCMP for potential data quality concerns were not excluded; Bassetlaw was part of a substantially larger LA district (Nottinghamshire) without quality concerns. LA analyses specifically excluded 684 children from three LAs each with fewer than 1000 participants (The City and County of the City of London [n=11], Isles of Scilly [n = 21] and Rutland [n=652]) to avoid unnecessary imprecision in the results.

### **Characteristics of Study Participants**

Table 1 summarises participant characteristics for each age-sex group, including 582,899 children aged 4-5 years and 485,362 children aged 10-11 years from 152 LAs. Ethnicity prevalences (~60% Whites, ~5% Blacks, ~8% South Asians) did not differ appreciably by age-sex group. Data on ethnicity were not available for ~13% of 4-5 year-olds and ~16% of 10-11 year-olds. As expected, older children were heavier and taller on average and had higher median BMIs. At 4-5 years, boys were heavier and taller than girls, with a marginally higher median BMI; at 10-11 years, girls were heavier and taller than boys and had a higher median BMI.

### **Median BMI and prevalences of overweight, obesity and overweight-obesity by ethnicity: effect of BMI adjustments**

Median BMI and prevalences of BMI categories by ethnicity before and after BMI adjustment are shown for 4-5 year-olds in Tables 2 and 3 and for 10-11 year-olds in Tables 4 and 5. In White children, the prevalences of overweight-obesity (boys, girls) were 23.0% and 20.9% in 4-5 year-olds, 32.8% and 30.4% in 10-11 year-olds respectively.

**Black children:** before BMI adjustment, Black children had higher median BMI than Whites for all age-sex groups (Mann-Whitney U tests, all  $p < 0.0001$ ). The prevalences of overweight-obesity and obesity were higher than those of White children, both for boys and girls at 4-5 years and at 10-11 years

(z-tests, all  $p < 0.0001$ ). However, after adjustment, Black children aged 4-5 years (both boys and girls) and 10-11 year-old boys had slightly lower median adjusted BMI whilst Black 10-11 year-old girls had higher adjusted BMI (compared to Whites) (Mann-Whitney U tests, all  $p < 0.0001$ ). Overweight-obesity prevalences were slightly lower in Black children aged 4-5 years (both boys and girls) (z-tests, both  $p < 0.0001$ ) and in 10-11 year-old boys (z-test,  $p = 0.04$ ). However, black girls aged 10-11 years had a higher overweight-obesity prevalence than their White peers (z-test,  $p < 0.0001$ ). There were no consistent differences in median adjusted BMI and overweight-obesity prevalence between Black African, Black Caribbean and other Black children either before or after adjustment.



**South Asian children:** before BMI adjustment, BMI patterns in South Asian children differed by age-group. At 4-5 years, median BMI was lower in South Asians than in White children (Mann Whitney U tests, both  $p < 0.0001$ ). Overweight-obesity prevalences were also lower in 4-5 year-old South Asians than in White children (z-tests, both  $p < 0.0001$ ). At 10-11 years, South Asian boys had an appreciably higher median BMI than Whites (Mann Whitney U test,  $p < 0.0001$ ) but there was no marked difference in girls (Mann Whitney U test,  $p = 0.77$ ). However, overweight-obesity prevalences for both boys and girls were higher than White children (z-test, both  $p < 0.0001$ ). After adjustment, South Asian children (boys and girls), both at 4-5 years and more so at 10-11 years, had higher median BMIs (Mann Whitney U tests, all  $p < 0.0001$ ); they also had higher overweight-obesity prevalences than White children (z-tests, all  $p < 0.0001$ ); more than half of older South Asian boys were overweight-obese. Within the South Asian group, children of Pakistani and Bangladeshi origin had higher median adjusted BMI, obesity and overweight-obesity prevalences than children of Indian origin; these patterns were observed for both boys and girls.

#### **Prevalences of underweight and healthy weight by ethnicity: effect of BMI adjustments**

Unadjusted underweight prevalences were higher in younger Black children and similar in older Black children compared to Whites; South Asian children had higher unadjusted prevalences of underweight in both age-groups. However, after adjustment Black children had even higher, and South Asian children lower, underweight prevalences. Unadjusted healthy weight prevalences were lower in Black children (younger and older) compared to Whites; younger South Asian children had similar unadjusted healthy weight prevalences to Whites, while older children had lower prevalences. However, adjusted prevalences of healthy weight were markedly higher in Black children and markedly lower in South Asian children compared with White children.

#### **Overall median BMI and prevalences of weight categories: effect of BMI adjustments**

The effects of ethnic-specific BMI adjustments on overall BMI and overweight-obesity patterns in the NCMP population were also examined (Table 2-5). After BMI adjustment, overall population median BMI values and the prevalences of being underweight or healthy changed very little. The adjusted

overall prevalences of overweight-obesity were marginally increased in all age-sex groups, all by 0.5% or less.

### **Local Authority (LA) differences in overall overweight-obesity prevalence: effect of BMI adjustments**

The effects of BMI adjustment on the prevalences and rankings of overweight-obesity in LA areas were examined. Prevalences of overweight-obesity in LA areas before and after BMI adjustments are plotted against one another in Figure 1, for each age-sex group. LA variations in overweight-obesity prevalence were marked in 10-11 year-olds (20-50%); the Spearman rank correlations of unadjusted and adjusted prevalence were high both for boys and girls (both  $\rho=0.96$ ). LA variations in overweight-obesity prevalence were smaller in 4-5 year-old boys and girls (15-30%) and correlations between unadjusted and adjusted prevalence were weaker ( $r = 0.62, 0.74$  respectively). After adjustment, overweight-obesity prevalences in LAs with a high South Asian population prevalence ( $\geq 20\%$ ) were systematically higher, while prevalences in LAs with a high Black population prevalence ( $\geq 20\%$ ) were systematically lower. In the small number of LAs with a high population prevalence of both ethnicities, adjustment had little effect on overweight-obesity prevalences (Figure 1). However, the effects of BMI adjustment on LA rankings were substantial. The 20 LAs with the highest overweight-obesity prevalences both before and after BMI adjustment in each age-sex group are summarised in supplementary Figures 1-4. In 4-5 year-olds, more than half of the 20 LAs with high overweight-obesity rankings were different after BMI adjustment; in 10-11 year-olds, at least a quarter were different. After adjustment, more LA areas with a high South Asian population prevalence were present in the top 20 rankings, while the number of LA areas with a high Black population prevalence declined (Supplementary Figures 1-4). A complete summary of LA overweight-obesity prevalences before and after BMI adjustment for each age-sex group is presented in Supplementary Table 2; corresponding information on overweight-obesity prevalence rankings is presented in Supplementary Table 3.

### **Sensitivity Analyses**

To determine whether results were influenced by children with particularly high unadjusted BMI values, sensitivity analyses excluded children with severe obesity ( $n=14,087$ ), defined using age and sex specific Extended International Obesity Task Force thresholds (21). The results were not materially affected by excluding these individuals. The results were also examined using more extreme overweight-obesity definitions, those based on the use of NCMP clinical reporting thresholds (on or above the 91<sup>st</sup> percentile). The patterns of ethnic differences in overweight-obesity prevalence were not materially changed by the use of more extreme thresholds (Supplementary Table 4).

## **DISCUSSION**

In this study, the first to our knowledge using ethnic-specific BMI adjustments to obtain an accurate picture of the relative prevalences of overweight-obesity in English children of different ethnicity, adjusted childhood overweight-obesity prevalence was particularly high among South Asian children in all age-sex groups and among older Black girls. These patterns were markedly different from those based on unadjusted BMI data, in which higher overweight-obesity prevalences in Black children were apparent. BMI adjustment increased the prevalences and rankings of overweight-obesity in LAs with high South Asian representation ( $\geq 20\%$ ) and reduced them in LAs with high Black representation.

### **Relation to previous studies**

In the present investigation, unadjusted median BMI and overweight-obesity prevalences were particularly high in Black children compared with Whites, both at 4-5 years and at 10-11 years. This is consistent with previous NCMP reports from the same (13) and previous years (22), and with BMI data from other nationally representative studies, including the Health Survey for England (7) and the Millennium Cohort Study both at 5 years (23) and 11 years (24). The unadjusted BMI patterns in South Asian children, with lower unadjusted median BMI and overweight-obesity prevalences than Whites at 4-5 years but higher prevalences at 10-11 years, are also consistent with NCMP data from the same (13) and previous years (22) and with reports from the Millennium Cohort Study (23, 24).

The markedly higher adjusted median BMI and overweight-obesity prevalences levels observed among South Asian children at both 4-5 and 10-11 years are consistent with the results of other population-based studies using more direct body fatness measures, including bioimpedance and skinfold thickness in 9-10 year-olds (15), deuterium dilution in both 8-10 year-olds (16) and 5-11 year olds (25) and dual energy X-ray absorptiometry in 5-18 year-olds (26), all of which showed higher body fatness in South Asians than in Whites. The lower adjusted median BMI and overweight-obesity prevalences observed in all Black children (except older girls) are also consistent with the results of earlier studies using more direct body fatness measures, including bioimpedance and skinfold thickness in 9-10 year-olds (15), deuterium dilution in 8-10 year-olds (16) and dual energy X-ray absorptiometry in 5-18 year-olds (26), which all showed lower body fatness in Blacks than in Whites. Our results reinforce the conclusion of an earlier systematic review that observed ethnic patterns of childhood overweight-obesity are strongly dependent on the method used to assess overweight-obesity (27).

### **Implications**

Our results, based on adjustment of BMI values to achieve consistent BMI-body fatness associations in South Asian, Black and White children, provide strong evidence that English South Asian children (especially Bangladeshis and Pakistanis) have elevated overweight-obesity burdens. This is a particular concern, given the high long-term risks of type 2 diabetes and cardiovascular disease in UK South Asians (7, 8) from childhood (11, 12). A second concern is the high adjusted BMI values in older Black girls, which suggest that the patterning of high obesity prevalence in UK Black women (7) is emerging between 4-5 and 10-11 years, again with implications for the focus of prevention in young age-groups. The average differences in adjusted BMI of more than 1 kg/m<sup>2</sup> (for example between South Asians and Whites at 10-11 years) would (if sustained into adulthood, which appears likely on current trends) account for appreciably higher risks of both T2D (by at least 25%) (28) and CHD (by at least 5%) (5, 29); the impact of higher BMI from childhood on T2D risk is likely to be particularly marked (6). The results also reinforce earlier concerns that unadjusted BMI data may disproportionately misclassify weight status in South Asian and Black children (14-16, 25). This

report emphasizes the scale of potential misclassification, showing that while unadjusted BMI data point to an excess of overweight-obesity in Black children, in reality the excess is greater in South Asian children – though overall overweight-obesity prevalences in the entire population of England are little affected, since the changes in South Asian and Black children tend to offset one another. The results also draw attention to uncertainties in overweight-obesity prevalence estimates at LA level which have been reported annually by NCMP (13). These LA prevalence estimates are very sensitive to BMI adjustments and are particularly (and predictably) affected in LAs with high ethnic minority prevalences. Adjustment reduced overweight-obesity prevalence rankings in LAs with substantial Black representation and increased them in LAs with substantial South Asian populations. This underscores the need to treat LA rankings cautiously, and emphasize instead the widespread occurrence of childhood overweight-obesity in all English LAs; even among the lowest ranking LAs, overweight-obesity prevalences are excessive. Effective population-wide strategies for overweight-obesity prevention are therefore needed in all children, with a special emphasis on South Asian children and older Black girls. While the present analyses focus on English children, the results are likely to be relevant for the UK as a whole. Moreover, they are likely to have relevance for other countries with substantial South Asian and African origin ethnic minority populations and could also have relevance for other ethnic minority populations (e.g. Pacific Island populations) with different BMI-body fatness associations from those of majority White populations (30, 31).

### **Strengths and limitations**

The NCMP is a large-scale, national survey resource with high rates of participation both by schools and individual children, with standardized data collection and quality control procedures. We used 2012-13 data, the latest year available to us. The validity of the BMI adjustments used is critical; these used the reference deuterium dilution method (32) to obtain fat mass estimates based on a pooled resource of ~1750 Black, South Asian and White children. The BMI distributions of the South Asian, Black and White children in the studies used to derive BMI adjustments were very similar to those of the children in NCMP populations, suggesting that their application to NCMP data was appropriate. BMI adjustments were provided for South Asian and Black children (based on inclusion of Indian,

Pakistani, Bangladeshi, Black African and Caribbean children); these groups together account for almost two-thirds of all ethnic minority participants in the NCMP. However, it was not possible to provide adjustments for other ethnic groups not represented in the deuterium studies, including children with mixed ethnicities. It is however possible that the adjustments derived for South Asian children could be applied to Other Asians (14), which would increase their estimated overweight-obesity burden. The validity of BMI adjustments could be greater if they could be standardized in relation to visceral fat (rather than total body fat), which is particularly implicated in the development of insulin resistance and type 2 diabetes risk and may be particularly high in South Asians (8). Although the validity and practicability of such adjustments remains uncertain, the current adjustments for South Asians may be conservative, potentially underestimating their true burden of overweight-obesity.

### **Conclusion**

There is a substantial excess of overweight-obesity among English South Asian children (both at 4-5 years and especially at 10-11 years) and among Black girls aged 10-11 years, with important implications for overweight-obesity prevention. These patterns are not apparent using unadjusted BMI data, which tend to underestimate overweight-obesity prevalences in South Asian children and overestimate them in Black children.

### **Acknowledgments**

The authors are grateful to Mary S Fewtrell, Dalia Haroun, Sooky Lum and Jane E Williams for providing deuterium dilution data in support of this research. We acknowledge The Health and Social Care Information Centre (now NHS Digital) for providing NCMP data. This work was supported by a project grant from the British Heart Foundation (Grant ref: PG/15/19/31336) and by the National Institute for Health Research (NIHR) Collaboration for Leadership in Applied Health Research and Care (South London). CMN was supported by the Wellcome Trust Institutional Strategic Support Fund awarded to St. George's, University of London (204809/Z/16/Z). HR was part supported by the National Institute for Health Research (NIHR) Collaboration for Leadership in Applied Health Research and Care (CLAHRC) North Thames at Bart's Health NHS Trust. The views expressed are

those of the authors and not necessarily those of the funding agencies, the NHS or the Department of Health.

**Contributors**

Study design – MTH, CMN, PHW, CGO, ARR, DGC, JCKW

Data analysis – MTH, ARR, DGC, CMN

Data interpretation - MTH, PHW, ARR, CGO, DGC, JCKW, HR, CMN

Drafting manuscript - MTH, PHW

Critical evaluation and revision of manuscript - MTH, CMN, PHW, ASD, CGO, ARR, DGC, JCKW, HR

**Competing interests:**

We declare that we have no conflicts of interest.

Accepted manuscript

**REFERENCES**

1. World Health Organisation. Childhood overweight and obesity 2014 [Available from: [www.who.int/dietphysicalactivity/childhood/en/](http://www.who.int/dietphysicalactivity/childhood/en/)].
2. Bridges S, Darton R, Evans-Lacko S, Fuller E, Henderson C, Ilic N, et al. Health Survey for England 2014. Joint Health Surveys Unit [<http://content.digital.nhs.uk/catalogue/PUB19295>]. 2015.
3. Cole TJ, Bellizzi MC, Flegal KM, Dietz WH. Establishing a standard definition for child overweight and obesity worldwide: international survey. *BMJ*. 2000;320(7244):1240-3.
4. Tirosh A, Shai I, Afek A, Dubnov-Raz G, Ayalon N, Gordon B, et al. Adolescent BMI trajectory and risk of diabetes versus coronary disease. *N Engl J Med*. 2011;364(14):1315-25.
5. Owen CG, Whincup PH, Orfei L, Chou QA, Rudnicka AR, Wathern AK, et al. Is body mass index before middle age related to coronary heart disease risk in later life? Evidence from observational studies. *International journal of obesity*. 2009;33(8):866-77.
6. Narayan KM, Boyle JP, Thompson TJ, Gregg EW, Williamson DF. Effect of BMI on lifetime risk for diabetes in the U.S. *Diabetes Care*. 2007;30(6):1562-6.
7. The Health and Social Care Information Centre. Health Survey for England 2004: The health of ethnic minority groups., [<http://content.digital.nhs.uk/catalogue/PUB01209/health-surv-hea-eth-min-hea-tab-eng-2004-rep.pdf>]; 2006.
8. Tillin T, Hughes AD, Godsland IF, Whincup PH, Forouhi NG, Welsh P, et al. Insulin resistance and truncal obesity as important determinants of the greater incidence of diabetes in Indian Asians and African Caribbeans compared with Europeans: the Southall And Brent REvisited (SABRE) cohort. *Diabetes Care*. 2013;36(2):383-93.
9. Tillin T, Hughes AD, Mayet J, Whincup PH, Sattar N, Forouhi NG, et al. The relationship between metabolic risk factors and incident cardiovascular disease in Europeans, South Asians, and African Caribbeans: SABRE (Southall and Brent Revisited) -- a prospective population-based study. *Journal of the American College of Cardiology*. 2013;61(17):1777-86.
10. Wild SH, Fischbacher C, Brock A, Griffiths C, Bhopal R. Mortality from all causes and circulatory disease by country of birth in England and Wales 2001-2003. *J Public Health (Oxf)*. 2007;29(2):191-8.
11. Whincup PH, Nightingale CM, Owen CG, Rudnicka AR, Gibb I, McKay CM, et al. Early emergence of ethnic differences in type 2 diabetes precursors in the UK: the Child Heart and Health Study in England (CHASE Study). *PLoS Med*. 2010;7(4):e1000263.
12. Whincup PH, Gilg JA, Papacosta O, Seymour C, Miller GJ, Alberti KG, et al. Early evidence of ethnic differences in cardiovascular risk: cross sectional comparison of British South Asian and white children. *BMJ*. 2002;324(7338):635.
13. The Health and Social Care Information Centre. National Child Measurement Programme: England, 2012-2013 year., [<http://content.digital.nhs.uk/catalogue/PUB03034/nati-chil-meas-prog-eng-2010-2011-rep1.pdf>]; 2014.
14. World Health Organisation. Appropriate body-mass index for Asian populations and its implications for policy and intervention strategies. *Lancet*. 2004;363(9403):157-63.
15. Nightingale CM, Rudnicka AR, Owen CG, Cook DG, Whincup PH. Patterns of body size and adiposity among UK children of South Asian, black African-Caribbean and white European origin: Child Heart And health Study in England (CHASE Study). *International Journal of Epidemiology*. 2011;40(1):33-44.
16. Nightingale CM, Rudnicka AR, Owen CG, Donin AS, Newton SL, Furness CA, et al. Are ethnic and gender specific equations needed to derive fat free mass from bioelectrical impedance in children of South asian, black african-Caribbean and white European origin? Results of the assessment of body composition in children study. *PLoS One*. 2013;8(10):e76426.
17. Hudda MT, Nightingale CM, Donin AS, Fewtrell MS, Haroun D, Lum S, et al. Body mass index adjustments to increase the validity of body fatness assessment in UK Black African and South Asian children. *International journal of obesity (2005)*. 2017;41(7):1048-55.



18. Public Health England. National child measurement programme: operational guidance. London, [[https://www.gov.uk/government/uploads/system/uploads/attachment\\_data/file/377902/NCMP\\_operational\\_guidance.pdf](https://www.gov.uk/government/uploads/system/uploads/attachment_data/file/377902/NCMP_operational_guidance.pdf)]; 2016.
19. Cole TJ, Freeman JV, Preece MA. Body mass index reference curves for the UK, 1990. *Arch Dis Child*. 1995;73(1):25-9.
20. The Health and Social Care Information Centre. Ethnic Category Code 2016 [Available from: [http://www.datadictionary.nhs.uk/data\\_dictionary/attributes/e/end/ethnic\\_category\\_code\\_de.asp?shownav=1](http://www.datadictionary.nhs.uk/data_dictionary/attributes/e/end/ethnic_category_code_de.asp?shownav=1)].
21. Cole TJ, Lobstein T. Extended international (IOTF) body mass index cut-offs for thinness, overweight and obesity. *Pediatric Obesity*. 2012;7(4):284-94.
22. The Health and Social Care Information Centre. National Child Measurement Programme: England, 2010/11 school year. London: Department of Health, [<http://content.digital.nhs.uk/catalogue/PUB03034>]; 2011.
23. Zilanawala A, Davis-Kean P, Nazroo J, Sacker A, Simonton S, Kelly Y. Race/ethnic disparities in early childhood BMI, obesity and overweight in the United Kingdom and United States. *International journal of obesity*. 2015;39(3):520-9.
24. Massion S, Wickham S, Pearce A, Barr B, Law C, Taylor-Robinson D. Exploring the impact of early life factors on inequalities in risk of overweight in UK children: findings from the UK Millennium Cohort Study. *Arch Dis Child*. 2016;101(8):724-30.
25. Lee S, Bountziouka V, Lum S, Stocks J, Bonner R, Naik M, et al. Ethnic variability in body size, proportions and composition in children aged 5 to 11 years: is ethnic-specific calibration of bioelectrical impedance required? *PLoS One*. 2014;9(12):e113883.
26. Shaw NJ, Crabtree NJ, Kibirige MS, Fordham JN. Ethnic and gender differences in body fat in British schoolchildren as measured by DXA. *Arch Dis Child*. 2007;92(10):872-5.
27. El-Sayed AM, Scarborough P, Galea S. Ethnic inequalities in obesity among children and adults in the UK: a systematic review of the literature. *Obesity Reviews*. 2011;12(5):e516-e34.
28. Corbin LJ, Richmond RC, Wade KH, Burgess S, Bowden J, Smith GD, et al. BMI as a Modifiable Risk Factor for Type 2 Diabetes: Refining and Understanding Causal Estimates Using Mendelian Randomization. *Diabetes*. 2016;65(10):3002-7.
29. Whitlock G, Lewington S, Sherliker P, Clarke R, Emberson J, Halsey J, et al. Body-mass index and cause-specific mortality in 900 000 adults: collaborative analyses of 57 prospective studies. *Lancet*. 2009;373(9669):1083-96.
30. Rush EC, Puniani K, Valencia ME, Davies PS, Plank LD. Estimation of body fatness from body mass index and bioelectrical impedance: comparison of New Zealand European, Maori and Pacific Island children. *European journal of clinical nutrition*. 2003;57(11):1394-401.
31. Carpenter CL, Yan E, Chen S, Hong K, Arechiga A, Kim WS, et al. Body fat and body-mass index among a multiethnic sample of college-age men and women. *Journal of obesity*. 2013;2013:790654.
32. Wells JC, Fewtrell MS. Measuring body composition. *Arch Dis Child*. 2006;91(7):612-7.

**Figure****Legends:**

FIGURE 1: CORRELATION OF PREVALENCES OF OVERWEIGHT-OBESITY IN LOCAL AUTHORITIES BEFORE AND AFTER BMI ADJUSTMENTS BY AGE-SEX GROUP IN THE NATIONAL CHILD MEASUREMENT PROGRAMME (2012-13). LOCAL AUTHORITIES ARE COLOUR CODED BY ETHNIC COMPOSITION

Legend: Open Circles = South Asian & Blacks < 20%, Green diamond = South Asian  $\geq$  20% & Blacks < 20%, Red triangle = Blacks  $\geq$  20% & South Asian < 20%, Blue square = South Asian & Blacks  $\geq$  20%

Based on the Overweight-Obesity population thresholds: Overweight-obese:  $\geq$ 85th centile

Excluding areas with potential data quality issues and areas with less than 1000 individuals

TABLE 1: CHARACTERISTICS OF PARTICIPANTS IN THE NATIONAL CHILD MEASUREMENT PROGRAMME (2012-13): BY AGE-SEX GROUP

TABLE 2: 4-5 YEAR OLD BOYS - SUMMARY OF BODY MASS INDEX AND WEIGHT CATEGORIES USING UK90 POPULATION THRESHOLDS\* BY ETHNIC GROUP BEFORE AND AFTER ETHNIC ADJUSTMENTS TO BMI IN THE NATIONAL CHILD MEASUREMENT PROGRAMME (2012-13)

TABLE 3: 4-5 YEAR OLD GIRLS - SUMMARY OF BODY MASS INDEX AND WEIGHT CATEGORIES USING UK90 POPULATION THRESHOLDS\* BY ETHNIC GROUP BEFORE AND AFTER ETHNIC ADJUSTMENTS TO BMI IN THE NATIONAL CHILD MEASUREMENT PROGRAMME (2012-13)

TABLE 4: 10-11 YEAR OLD BOYS - SUMMARY OF BODY MASS INDEX AND WEIGHT CATEGORIES USING UK90 POPULATION THRESHOLDS\* BY ETHNIC GROUP BEFORE AND AFTER ETHNIC ADJUSTMENTS TO BMI IN THE NATIONAL CHILD MEASUREMENT PROGRAMME (2012-13)

TABLE 5: 10-11 YEAR OLD GIRLS - SUMMARY OF BODY MASS INDEX AND WEIGHT CATEGORIES USING UK90 POPULATION THRESHOLDS\* BY ETHNIC GROUP BEFORE AND AFTER ETHNIC ADJUSTMENTS TO BMI IN THE NATIONAL CHILD MEASUREMENT PROGRAMME (2012-13)

TABLE 1: CHARACTERISTICS OF PARTICIPANTS IN THE NATIONAL CHILD MEASUREMENT PROGRAMME (2012-13): BY AGE-SEX GROUP

Variable	4-5 Year olds N= 582,899		10-11 Year olds N= 485,362	
	Boys N= 297,887	Girls N= 285,012	Boys N= 248,783	Girls N= 236,579
Age (years), mean (SD)	5.0 (0.3)	5.0 (0.3)	10.9 (0.4)	10.9 (0.4)
Height (cm), mean (SD)	110.0 (5.1)	109.0 (5.1)	144.7 (7.0)	145.4 (7.5)
Weight (kg), median(LQ-UQ)	19.3 (17.7 - 21.1)	18.9 (17.3 - 20.8)	37.5 (32.9 - 44.1)	39.0 (33.5 - 46.2)
BMI (kg/m <sup>2</sup> ), median(LQ-UQ)	16.0 (15.2 - 16.9)	15.9 (15.1 - 17.0)	17.9 (16.3 - 20.4)	18.3 (16.5 - 21.0)
<b>Variable, n (%)</b>				
Ethnicity				
White	197691 (66.4)	188663 (66.2)	160278 (64.4)	151146 (64.0)
Black	14468 (4.9)	13970 (4.9)	11347 (4.6)	11319 (4.8)
Black African	9003 (3.0)	8520 (3.0)	6172 (2.5)	6154 (2.6)
Black Caribbean	2838 (1.0)	2788 (1.0)	2971 (1.2)	2927 (1.2)
Black - Other	2627 (0.9)	2662 (0.9)	2204 (0.9)	2238 (1.0)
South Asian	23191 (7.8)	22109 (7.8)	19406 (7.8)	18636 (7.9)
South Asian - Indian	7474 (2.5)	7200 (2.5)	5817 (2.3)	5493 (2.3)
South Asian - Pakistani	11502 (3.9)	10855 (3.8)	9675 (3.9)	9322 (3.9)
South Asian – Bangladeshi	4215 (1.4)	4054 (1.4)	3914 (1.6)	3821 (1.6)
Other Asian	6184 (2.1)	6062 (2.1)	4325 (1.7)	41745(1.8)
Other Ethnicity	18832 (6.3)	18168 (6.4)	12914 (5.2)	12547 (5.3)
Unknown	37521 (12.6)	36040 (12.7)	40513 (16.3)	38756 (16.4)
Region				
East Midlands	25212 (8.5)	23837 (8.4)	21496 (8.6)	20232 (8.6)
East of England	34041 (11.4)	32391 (11.4)	28195 (11.3)	26143 (11.1)
London	47613 (16.0)	46331 (16.3)	37346 (15.0)	36701 (15.5)
North East	12603 (4.2)	12509 (4.4)	10856 (4.4)	10432 (4.4)
North West	40997 (13.8)	38947 (13.7)	34734 (14.0)	32848 (13.9)
South East	45948 (15.4)	43628 (15.3)	38988 (15.7)	37052 (15.7)
South West	26481 (8.9)	25377 (8.9)	22370 (9.0)	21136 (8.9)
West Midlands	33353 (11.2)	31636 (11.1)	28430 (11.4)	26999 (11.4)
Yorkshire and The Humber	30590 (10.3)	29206 (10.3)	25026 (10.1)	23696 (10.0)
Unknown	1049 (0.4)	1150 (0.4)	1342 (0.5)	1340 (0.6)

Key:

SD = Standard deviation, LQ = Lower quartile, UQ = Upper quartile

TABLE 2: 4-5 YEAR OLD BOYS - SUMMARY OF BODY MASS INDEX AND WEIGHT CATEGORIES USING UK90 POPULATION THRESHOLDS\* BY ETHNIC GROUP BEFORE AND AFTER ETHNIC ADJUSTMENTS TO BMI IN THE NATIONAL CHILD MEASUREMENT PROGRAMME (2012-13)

Ethnic Group	N	Median BMI, kg/m <sup>2</sup> (LQ-UQ)	4-5 Year Old Boys Prevalence, % (95% CI)				
			Underweight	Healthy	Overweight	Obese	Overweight-Obese
<b>Before BMI Adjustment</b>							
White	197,691	16.0 (15.3-16.9)	0.7 (0.6 - 0.7)	76.3 (76.1 - 76.5)	14.1 (13.9 - 14.2)	8.9 (8.8 - 9.1)	23.0 (22.8 - 23.2)
Black	14,468	16.2 (15.3-17.3)	1.1 (0.9 - 1.3)	68.1 (67.3 - 68.8)	14.9 (14.4 - 15.5)	15.9 (15.3 - 16.5)	30.8 (30.1 - 31.6)
Black African	9,003	16.3 (15.4-17.4)	1.1 (0.8 - 1.3)	65.8 (64.8 - 66.7)	15.8 (15.0 - 16.5)	17.4 (16.6 - 18.2)	33.2 (32.2 - 34.2)
Black Caribbean	2,838	16.0 (15.2-17.0)	0.9 (0.6 - 1.3)	74.3 (72.7 - 76.0)	13.2 (12.0 - 14.5)	11.5 (10.3 - 12.7)	24.7 (23.1 - 26.3)
Black - Other	2,627	16.2 (15.3-17.2)	1.6 (1.1 - 2.0)	69.1 (67.4 - 70.9)	14.0 (12.7 - 15.3)	15.3 (13.9 - 16.7)	29.3 (27.6 - 31.1)
South Asian	23,191	15.5 (14.6-16.6)	4.3 (4.1 - 4.6)	76.3 (75.8 - 76.9)	8.3 (8.0 - 8.7)	11.0 (10.6 - 11.4)	19.3 (18.8 - 19.9)
South Asian - Indian	7,474	15.3 (14.4-16.3)	6.1 (5.5 - 6.6)	77.6 (76.7 - 78.6)	7.1 (6.6 - 7.7)	9.2 (8.5 - 9.8)	16.3 (15.5 - 17.1)
South Asian - Pakistani	11,502	15.5 (14.7-16.6)	3.7 (3.3 - 4.0)	75.9 (75.1 - 76.7)	9.1 (8.5 - 9.6)	11.4 (10.8 - 12.0)	20.4 (19.7 - 21.2)
South Asian -Bangladeshi	4,215	15.6 (14.7-16.7)	3.1 (0.1 - 0.2)	75.2 (73.9 - 76.5)	8.5 (7.7 - 9.4)	13.2 (12.2 - 14.2)	21.8 (20.5 - 23.0)
Other Asian	6,184	15.7 (14.9-16.8)	2.6 (2.2 - 3.0)	75.9 (74.8 - 76.9)	10.7 (9.9 - 11.5)	10.8 (10.1 - 11.6)	21.5 (20.5 - 22.5)
Other Ethnicity	18,832	15.9 (15.2-16.9)	1.2 (1.0 - 1.3)	75.4 (74.7 - 76.0)	12.9 (12.4 - 13.4)	10.6 (10.1 - 11.0)	23.5 (22.9 - 24.0)
Unknown	37,521	16.0 (15.2-16.9)	1.0 (0.9 - 1.1)	75.5 (75.1 - 76.0)	13.5 (13.1 - 13.8)	10.0 (9.7 - 10.3)	23.4 (23.0 - 23.9)
Overall	297,887	16.0 (15.2-16.9)	1.1 (1.1 - 1.1)	75.7 (75.6 - 75.9)	13.4 (13.3 - 13.6)	9.7 (9.6 - 9.8)	23.2 (23.0 - 23.3)
<b>After BMI Adjustment **</b>							
White							
Black		15.1 (14.4-15.9)	4.3 (4.0 - 4.7)	85.1 (84.5 - 85.7)	5.8 (5.4 - 6.1)	4.8 (4.4 - 5.1)	10.5 (10.0 - 11.0)
Black African		15.2 (14.4-16.9)	4.1 (3.7 - 4.5)	84.1 (83.4 - 84.9)	6.4 (5.9 - 6.9)	5.4 (4.9 - 5.8)	11.8 (11.1 - 12.4)
Black Caribbean		15.0 (14.3-15.7)	4.2 (3.4 - 4.9)	88.5 (87.4 - 89.7)	4.4 (3.6 - 5.1)	2.9 (2.3 - 3.5)	7.3 (6.3 - 8.3)
Black - Other		15.1 (14.4-15.9)	5.3 (4.4 - 6.1)	84.8 (83.5 - 86.2)	5.0 (4.2 - 5.8)	4.9 (4.0 - 5.7)	9.9 (8.7 - 11.0)
South Asian		16.6 (15.7-17.7)	0.2 (0.2 - 0.3)	60.4 (59.8 - 61.1)	18.4 (17.9 - 18.9)	21.0 (20.5 - 21.5)	39.4 (38.7 - 40.0)
South Asian - Indian		16.4 (15.5-17.5)	0.3 (0.2 - 0.4)	65.2 (64.1 - 66.3)	16.7 (15.9 - 17.5)	17.8 (16.9 - 18.7)	34.5 (33.4 - 35.6)
South Asian - Pakistani		16.6 (15.8-17.8)	0.2 (0.1 - 0.2)	58.5 (57.6 - 59.4)	19.2 (18.5 - 19.9)	22.2 (21.4 - 23.0)	41.4 (40.5 - 42.3)
South Asian - Bangladeshi		16.7 (15.8-17.9)	0.2 (0.1 - 0.4)	57.4 (55.9 - 58.9)	19.1 (18.0 - 20.3)	23.3 (22.0 - 24.5)	42.4 (40.9 - 43.9)
Other Asian							
Other Ethnicity							
Unknown							
Overall		16.0 (15.2 - 16.9)	0.9 (0.9 - 1.0)	75.3 (75.2 - 75.5)	13.8 (13.7 - 13.9)	10.0 (9.8 - 10.1)	23.7 (23.6 - 23.9)

\* Population thresholds: Underweight:  $\leq 2^{\text{nd}}$  centile, Healthy:  $> 2^{\text{nd}}$  and  $< 85^{\text{th}}$  centiles, Overweight:  $\geq 85^{\text{th}}$  centile, Obese:  $\geq 95^{\text{th}}$  centile Overweight-obese:  $\geq 85^{\text{th}}$  centile

\*\* Only ethnic groups affected by the BMI adjustments presented

TABLE 3: 4-5 YEAR OLD GIRLS - SUMMARY OF BODY MASS INDEX AND WEIGHT CATEGORIES USING UK90 POPULATION THRESHOLDS\* BY ETHNIC GROUP BEFORE AND AFTER ETHNIC ADJUSTMENTS TO BMI IN THE NATIONAL CHILD MEASUREMENT PROGRAMME (2012-13)

Ethnic Group	N	Median BMI, KG/M <sup>2</sup> (LQ-UQ)	4-5 Year old Girls Prevalence, % (95% CI)				
			Underweight	Healthy	Overweight	Obese	Overweight-Obese
<b>Before BMI Adjustment</b>							
White	188,663	16.0 (15.1-16.9)	0.4 (0.4 - 0.4)	78.7 (78.5 - 78.9)	12.8 (12.7 - 13.0)	8.1 (7.9 - 8.2)	20.9 (20.7 - 21.1)
Black	13,970	16.2 (15.2-17.4)	0.7 (0.5 - 0.8)	70.4 (69.7 - 71.2)	13.8 (13.2 - 14.4)	15.1 (14.5 - 15.7)	28.9 (28.2 - 29.7)
Black African	8,520	16.2 (15.2-17.5)	0.7 (0.5 - 0.8)	68.8 (67.8 - 69.8)	14.6 (13.8 - 15.3)	16.0 (15.2 - 16.8)	30.6 (29.6 - 31.5)
Black Caribbean	2,788	16.0 (15.0-17.3)	0.7 (0.4 - 1.0)	72.8 (71.2 - 74.5)	12.5 (11.3 - 13.7)	14.0 (12.7 - 15.3)	26.5 (24.8 - 28.1)
Black - Other	2,662	16.1 (15.1-17.3)	0.6 (0.3 - 0.9)	73.1 (71.4 - 74.8)	12.7 (11.5 - 14.0)	13.6 (12.3 - 14.9)	26.3 (24.6 - 28.0)
South Asian	22,109	15.4 (14.5-16.7)	2.6 (2.4 - 2.8)	78.5 (78.0 - 79.1)	9.1 (8.7 - 9.5)	9.8 (9.4 - 10.2)	18.9 (18.4 - 19.4)
South Asian - Indian	7,200	15.2 (14.3-16.4)	3.4 (3.0 - 3.8)	81.1 (80.2 - 82.0)	7.6 (7.0 - 8.2)	7.8 (7.2 - 8.5)	15.4 (14.6 - 16.3)
South Asian - Pakistani	10,855	15.5 (14.6-16.8)	2.3 (2.0 - 2.6)	77.7 (76.9 - 78.5)	9.8 (9.2 - 10.4)	10.2 (9.7 - 10.8)	20.0 (19.3 - 20.8)
South Asian - Bangladeshi	4,054	15.6 (14.6-16.9)	1.9 (0.1 - 0.2)	76.1 (74.8 - 77.4)	10.1 (9.1 - 11.0)	11.9 (10.9 - 12.9)	22.0 (20.7 - 23.3)
Other Asian	6,062	15.6 (14.7-16.8)	1.6 (1.3 - 2.0)	79.9 (78.9 - 80.9)	10.4 (9.6 - 11.2)	8.1 (7.4 - 8.8)	18.5 (17.5 - 19.5)
Other Ethnicity	18,168	15.9 (15.0-17.0)	0.9 (0.7 - 1.0)	77.4 (76.8 - 78.0)	12.0 (11.5 - 12.5)	9.7 (9.3 - 10.1)	21.7 (21.1 - 22.3)
Unknown	36,040	15.9 (15.1-17.0)	0.6 (0.5 - 0.7)	78.1 (77.6 - 78.5)	12.6 (12.2 - 12.9)	8.8 (8.5 - 9.1)	21.4 (20.9 - 21.8)
Overall	285,012	15.9 (15.2-17.0)	0.7 (0.6 - 0.7)	78.2 (78.0 - 78.3)	12.5 (12.3 - 12.6)	8.7 (8.6 - 8.8)	21.2 (21.0 - 21.8)
<b>After BMI Adjustment **</b>							
White							
Black		15.1 (14.3-16.1)	2.8 (2.6 - 3.1)	85.0 (84.4 - 85.6)	6.4 (6.0 - 6.8)	5.8 (5.4 - 6.1)	12.2 (11.6 - 12.7)
Black African		15.1 (14.3-16.2)	2.7 (2.4 - 3.0)	84.3 (83.6 - 85.1)	6.8 (6.3 - 7.4)	6.1 (5.6 - 6.6)	13.0 (12.2 - 13.7)
Black Caribbean		15.0 (14.2-16.0)	3.1 (2.5 - 3.8)	85.5 (84.2 - 86.8)	6.2 (5.3 - 7.1)	5.2 (4.4 - 6.0)	11.4 (10.2 - 12.5)
Black - Other		15.0 (14.2-16.0)	2.9 (2.3 - 3.6)	86.6 (85.3 - 87.9)	5.3 (4.5 - 6.2)	5.1 (4.3 - 6.0)	10.5 (9.3 - 11.6)
South Asian		16.5 (15.6-17.7)	0.2 (0.1 - 0.2)	65.0 (64.3 - 65.6)	17.2 (16.7 - 17.7)	17.7 (17.2 - 18.2)	34.9 (34.3 - 35.5)
South Asian - Indian		16.3 (15.4-17.5)	0.2 (0.1 - 0.3)	69.9 (68.9 - 71.0)	15.6 (14.7 - 16.4)	14.3 (13.5 - 15.1)	29.9 (28.8 - 30.9)
South Asian - Pakistani		16.6 (15.7-17.8)	0.2 (0.1 - 0.2)	62.7 (61.8 - 63.6)	18.3 (17.6 - 19.0)	18.8 (18.1 - 19.6)	37.2 (36.3 - 38.1)
South Asian - Bangladeshi		16.6 (15.7-18.0)	0.1 (0.0 - 0.2)	62.2 (60.7 - 63.7)	17.0 (15.8 - 18.2)	20.7 (19.4 - 21.9)	37.7 (36.2 - 39.2)
Other Asian							
Other Ethnicity							
Unknown							
Overall		16.0 (15.1-17.0)	0.6 (0.5 - 0.6)	77.8 (77.7 - 78.0)	12.7 (12.6 - 12.8)	8.9 (8.8 - 9.0)	21.6 (21.5 - 21.8)

\* Population thresholds: Underweight:  $\leq 2^{\text{nd}}$  centile, Healthy:  $> 2^{\text{nd}}$  and  $< 85^{\text{th}}$  centiles, Overweight:  $\geq 85^{\text{th}}$  centile, Obese:  $\geq 95^{\text{th}}$  centile Overweight-obese:  $\geq 85^{\text{th}}$  centile

\*\* Only ethnic groups affected by the BMI adjustments presented

TABLE 4: 10-11 YEAR OLD BOYS - SUMMARY OF BODY MASS INDEX AND WEIGHT CATEGORIES USING UK90 POPULATION THRESHOLDS\* BY ETHNIC GROUP BEFORE AND AFTER ETHNIC ADJUSTMENTS TO BMI IN THE NATIONAL CHILD MEASUREMENT PROGRAMME (2012-13)

Ethnic Group	N	Median BMI, KG/M <sup>2</sup> (LQ-UQ)	10-11 Year old Boys Prevalence, % (95 CI)				
			Underweight	Healthy	Overweight	Obese	Overweight-Obese
<b>Before BMI Adjustment</b>							
White	160,278	17.8 (16.3-20.1)	0.9 (0.8 - 0.9)	66.3 (66.1 - 66.5)	14.1 (14.0 - 14.3)	18.7 (18.5 - 18.9)	32.8 (32.6 - 33.1)
Black	11,347	18.5 (16.7-21.4)	0.9 (0.7 - 1.1)	56.9 (56.0 - 57.8)	15.4 (14.8 - 16.1)	26.8 (26.0 - 27.6)	42.2 (41.3 - 43.1)
Black African	6,172	18.6 (16.7-21.4)	1.0 (0.8 - 1.3)	55.8 (54.6 - 57.1)	15.9 (15.0 - 16.8)	27.2 (26.1 - 28.3)	43.1 (41.9 - 44.4)
Black Caribbean	2,971	18.3 (16.7-21.3)	0.6 (0.3 - 0.9)	58.5 (56.7 - 60.2)	14.6 (13.3 - 15.9)	26.3 (24.7 - 27.9)	40.9 (39.2 - 42.7)
Black - Other	2,204	18.5 (16.7-21.2)	1.0 (0.6 - 1.5)	57.6 (55.6 - 59.7)	15.1 (13.6 - 16.6)	26.2 (24.4 - 28.1)	41.3 (39.3 - 43.4)
South Asian	19,406	18.3 (16.0-21.4)	3.6 (3.4 - 3.9)	54.6 (53.9 - 55.3)	14.8 (14.3 - 15.3)	27.0 (26.4 - 27.6)	41.8 (41.1 - 42.5)
South Asian - Indian	5,817	18.1 (15.9-21.1)	4.6 (4.0 - 5.1)	55.9 (54.6 - 57.2)	14.8 (13.9 - 15.7)	24.7 (23.6 - 25.8)	39.5 (38.3 - 40.8)
South Asian - Pakistani	9,675	18.3 (16.0-21.4)	3.8 (3.5 - 4.2)	54.9 (53.9 - 55.9)	14.5 (13.8 - 15.2)	26.7 (25.9 - 27.6)	41.2 (40.2 - 42.2)
South Asian - Bangladeshi	3,914	18.8 (16.3-22.0)	1.8 (0.3 - 0.6)	51.8 (50.2 - 53.4)	15.4 (14.2 - 16.5)	31.0 (29.6 - 32.5)	46.4 (44.8 - 48.0)
Other Asian	4,325	18.4 (16.3-21.3)	2.4 (1.9 - 2.8)	55.2 (53.7 - 56.7)	15.8 (14.8 - 16.9)	26.6 (25.3 - 27.9)	42.4 (41.0 - 43.9)
Other Ethnicity	12,914	18.2 (16.4-20.9)	1.0 (0.9 - 1.2)	60.1 (59.3 - 60.9)	15.2 (14.6 - 15.9)	23.6 (22.9 - 24.4)	38.9 (38.0 - 39.7)
Unknown	40,513	17.9 (16.3-20.4)	1.0 (0.9 - 1.1)	64.3 (63.8 - 64.8)	14.5 (14.2 - 14.9)	20.1 (19.7 - 20.5)	34.7 (34.2 - 35.1)
Overall	248,783	17.9 (16.3-20.4)	1.1 (1.1 - 1.2)	64.1 (63.9 - 64.3)	14.4 (14.3 - 14.5)	20.4 (20.2 - 20.5)	34.7 (34.6 - 34.9)
<b>After BMI Adjustment **</b>							
White							
Black		17.6 (16.0-21.1)	2.1 (1.8 - 2.4)	66.0 (65.1 - 66.9)	13.4 (12.8 - 14.0)	18.5 (17.8 - 19.2)	31.9 (31.0 - 32.8)
Black African		17.7 (16.0-20.1)	2.2 (1.8 - 2.6)	65.6 (64.4 - 66.8)	13.5 (12.7 - 14.4)	18.7 (17.7 - 19.7)	32.2 (31.0 - 33.4)
Black Caribbean		17.4 (16.0-20.0)	1.7 (1.2 - 2.2)	66.3 (64.6 - 68.0)	13.0 (11.8 - 14.2)	18.9 (17.5 - 20.4)	31.9 (30.3 - 33.6)
Black - Other		17.5 (16.0-20.0)	2.4 (1.7 - 3.0)	66.7 (64.7 - 68.6)	13.7 (12.3 - 15.1)	17.3 (15.7 - 18.9)	31.0 (29.1 - 32.9)
South Asian		19.4 (17.1-22.6)	0.4 (0.3 - 0.5)	47.5 (46.8 - 48.2)	16.7 (16.2 - 17.3)	35.4 (34.7 - 36.1)	52.1 (51.4 - 52.9)
South Asian - Indian		19.2 (17.0-22.2)	0.4 (0.2 - 0.5)	49.5 (48.3 - 50.8)	16.8 (15.9 - 17.8)	33.3 (32.1 - 34.5)	50.1 (48.8 - 51.4)
South Asian - Pakistani		19.4 (17.1-22.5)	0.5 (0.3 - 0.6)	48.1 (47.1 - 49.1)	16.4 (15.7 - 17.2)	35.0 (34.1 - 36.0)	51.5 (50.5 - 52.5)
South Asian - Bangladeshi		19.9 (17.5-23.1)	0.2 (0.0 - 0.3)	42.9 (41.3 - 44.4)	17.4 (16.2 - 18.6)	39.5 (38.0 - 41.1)	56.9 (55.4 - 58.5)
Other Asian							
Other Ethnicity							
Unknown							
Overall		17.9 (16.4-20.4)	0.9 (0.9 - 1.0)	64.0 (63.8 - 64.2)	14.5 (14.3 - 14.6)	20.6 (20.5 - 20.8)	35.1 (34.9 - 35.3)

Accepted manuscript

\* Population thresholds: Underweight:  $\leq 2^{\text{nd}}$  centile, Healthy:  $> 2^{\text{nd}}$  and  $< 85^{\text{th}}$  centiles, Overweight:  $\geq 85^{\text{th}}$  centile, Obese:  $\geq 95^{\text{th}}$  centile Overweight-obese:  $\geq 85^{\text{th}}$  centile  
\*\* Only ethnic groups affected by the BMI adjustments presented

TABLE 5: 10-11 YEAR OLD GIRLS - SUMMARY OF BODY MASS INDEX AND WEIGHT CATEGORIES USING UK90 POPULATION THRESHOLDS\* BY ETHNIC GROUP BEFORE AND AFTER ETHNIC ADJUSTMENTS TO BMI IN THE NATIONAL CHILD MEASUREMENT PROGRAMME (2012-13)

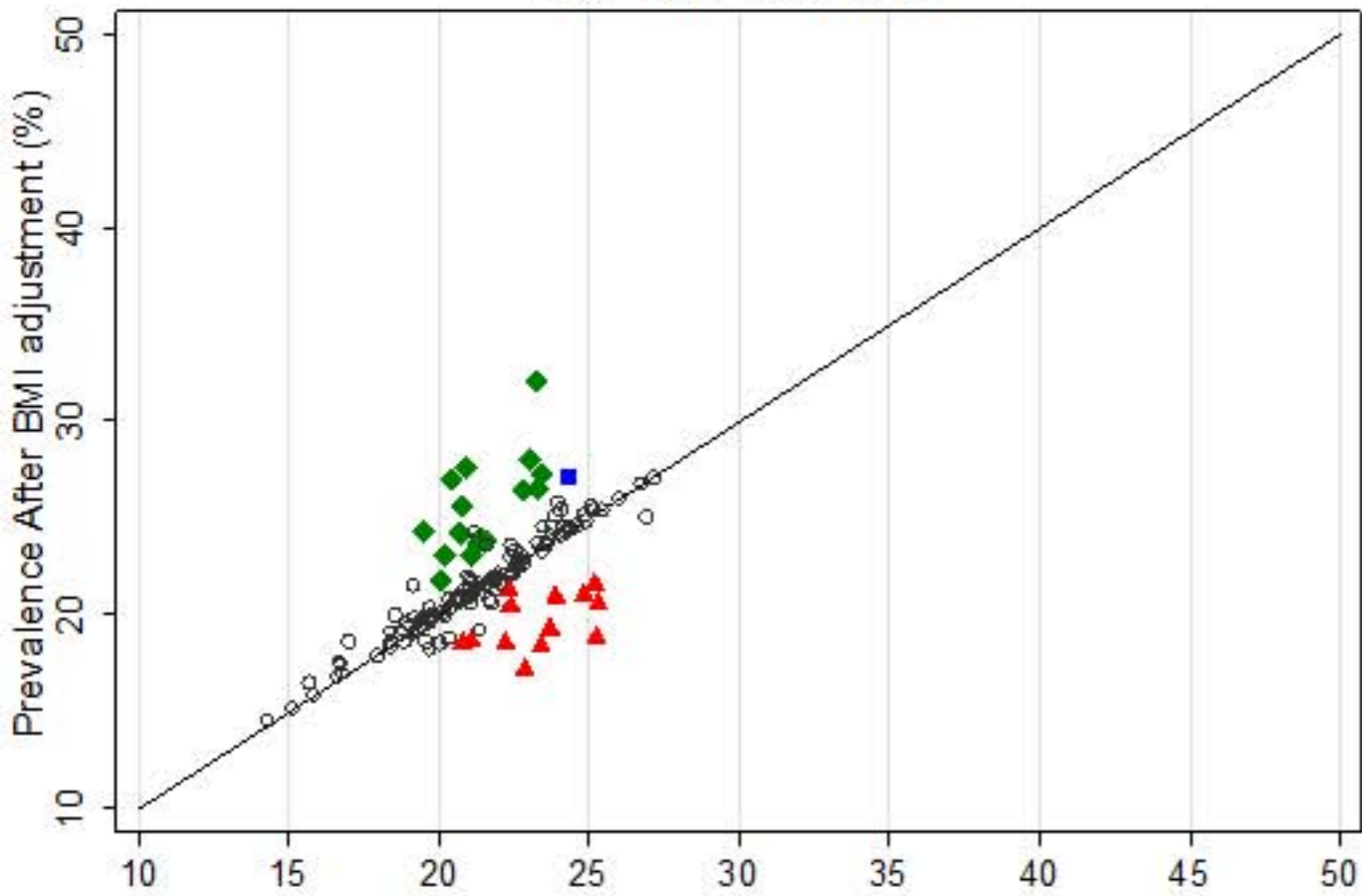
Ethnic Group	N	Median BMI, KG/M <sup>2</sup> (LQ-UQ)	10-11 Year old Girls Prevalence, % (95 CI)				
			Underweight	Healthy	Overweight	Obese	Overweight-Obese
<b>Before BMI Adjustment</b>							
White	151,146	18.3 (16.5-20.8)	1.2 (1.1 - 1.3)	68.4 (68.1 - 68.6)	14.2 (14.0 - 14.4)	16.2 (16.0 - 16.4)	30.4 (30.2 - 30.7)
Black	11,319	19.6 (17.3-22.7)	1.3 (1.1 - 1.5)	54.1 (53.2 - 55.0)	17.2 (16.5 - 17.9)	27.4 (26.6 - 28.2)	44.6 (43.7 - 45.5)
Black African	6,154	19.6 (17.3-22.7)	1.4 (1.1 - 1.7)	53.5 (52.3 - 54.8)	17.5 (16.6 - 18.5)	27.5 (26.4 - 28.6)	45.0 (43.8 - 46.3)
Black Caribbean	2,927	19.6 (17.2-22.8)	1.0 (0.6 - 1.3)	54.2 (52.4 - 56.0)	16.3 (14.9 - 17.6)	28.6 (27.0 - 30.2)	44.9 (43.1 - 46.7)
Black - Other	2,238	19.4 (17.0-22.3)	1.4 (0.9 - 1.9)	55.5 (53.5 - 57.6)	17.5 (15.9 - 19.1)	25.6 (23.8 - 27.4)	43.1 (41.0 - 45.1)
South Asian	18,636	18.4 (16.1-21.4)	4.1 (3.8 - 4.4)	61.7 (61.0 - 62.4)	14.7 (14.2 - 15.2)	19.6 (19.0 - 20.1)	34.2 (33.5 - 34.9)
South Asian - Indian	5,493	18.0 (15.9-20.9)	5.2 (4.6 - 5.7)	64.4 (63.1 - 65.7)	14.3 (13.4 - 15.3)	16.1 (15.1 - 17.1)	30.4 (29.2 - 31.7)
South Asian - Pakistani	9,322	18.6 (16.2-21.6)	4.2 (3.8 - 4.6)	60.3 (59.3 - 61.3)	14.7 (14.0 - 15.4)	20.7 (19.9 - 21.5)	35.4 (34.5 - 36.4)
South Asian - Bangladeshi	3,821	18.7 (16.4-21.8)	2.2 (0.5 - 0.8)	61.1 (59.5 - 62.6)	15.0 (13.9 - 16.1)	21.7 (20.4 - 23.1)	36.7 (35.2 - 38.3)
Other Asian	41,745	18.2 (16.2-20.6)	2.7 (2.2 - 3.2)	68.3 (66.9 - 69.7)	14.1 (13.1 - 15.2)	14.8 (13.8 - 15.9)	29.0 (27.6 - 30.3)
Other Ethnicity	12,547	18.7 (16.6-21.6)	1.7 (1.5 - 2.0)	62.5 (61.7 - 63.4)	14.9 (14.3 - 15.5)	20.8 (20.1 - 21.5)	35.7 (34.9 - 36.6)
Unknown	38,756	18.3 (16.5-20.9)	1.5 (1.3 - 1.6)	67.4 (67.0 - 67.9)	14.2 (13.8 - 14.5)	16.9 (16.6 - 17.3)	31.1 (30.7 - 31.6)
Overall	236,579	18.3 (16.5-21.0)	1.5 (1.5 - 1.6)	66.7 (66.5 - 66.9)	14.4 (14.3 - 14.6)	17.3 (17.2 - 17.5)	31.8 (31.6 - 32.0)
<b>After BMI Adjustment **</b>							
White							
Black		18.6 (16.6-21.4)	2.2 (1.9 - 2.5)	63.0 (62.1 - 63.9)	15.7 (15.0 - 16.4)	19.1 (18.4 - 19.8)	34.8 (33.9 - 35.7)
Black African		18.7 (16.6-21.4)	2.3 (1.9 - 2.7)	62.6 (61.4 - 63.8)	16.0 (15.0 - 16.9)	19.1 (18.1 - 20.1)	35.1 (33.9 - 36.2)
Black Caribbean		18.6 (16.5-21.5)	1.7 (1.2 - 2.2)	62.7 (61.0 - 64.5)	15.4 (14.1 - 16.7)	20.2 (18.7 - 21.6)	35.6 (33.8 - 37.3)
Black - Other		18.4 (16.4-21.1)	2.4 (1.8 - 3.0)	64.5 (62.5 - 66.5)	15.4 (13.9 - 16.9)	17.7 (16.1 - 19.3)	33.1 (31.1 - 35.0)
South Asian		19.5 (17.2-22.5)	0.6 (0.5 - 0.7)	55.8 (55.1 - 56.5)	17.3 (16.7 - 17.8)	26.4 (25.7 - 27.0)	43.6 (42.9 - 44.3)
South Asian - Indian		19.1 (17.0-21.9)	0.8 (0.5 - 1.0)	59.6 (58.3 - 60.9)	17.1 (16.1 - 18.1)	22.6 (21.5 - 23.7)	39.7 (38.4 - 41.0)
South Asian - Pakistani		19.6 (17.2-22.6)	0.7 (0.5 - 0.8)	54.7 (53.7 - 55.7)	17.1 (16.4 - 17.9)	27.5 (26.6 - 28.4)	44.7 (43.7 - 45.7)
South Asian - Bangladeshi		19.8 (17.5-22.9)	0.3 (0.2 - 0.5)	53.0 (51.4 - 54.6)	17.7 (16.5 - 19.0)	28.9 (27.5 - 30.4)	46.7 (45.1 - 48.2)
Other Asian							
Other Ethnicity							
Unknown							
Overall		18.4 (16.5-21.1)	1.3 (1.3 - 1.3)	66.7 (66.5 - 66.8)	14.6 (14.4 - 14.7)	17.5 (17.3 - 17.6)	32.0 (31.9 - 32.2)



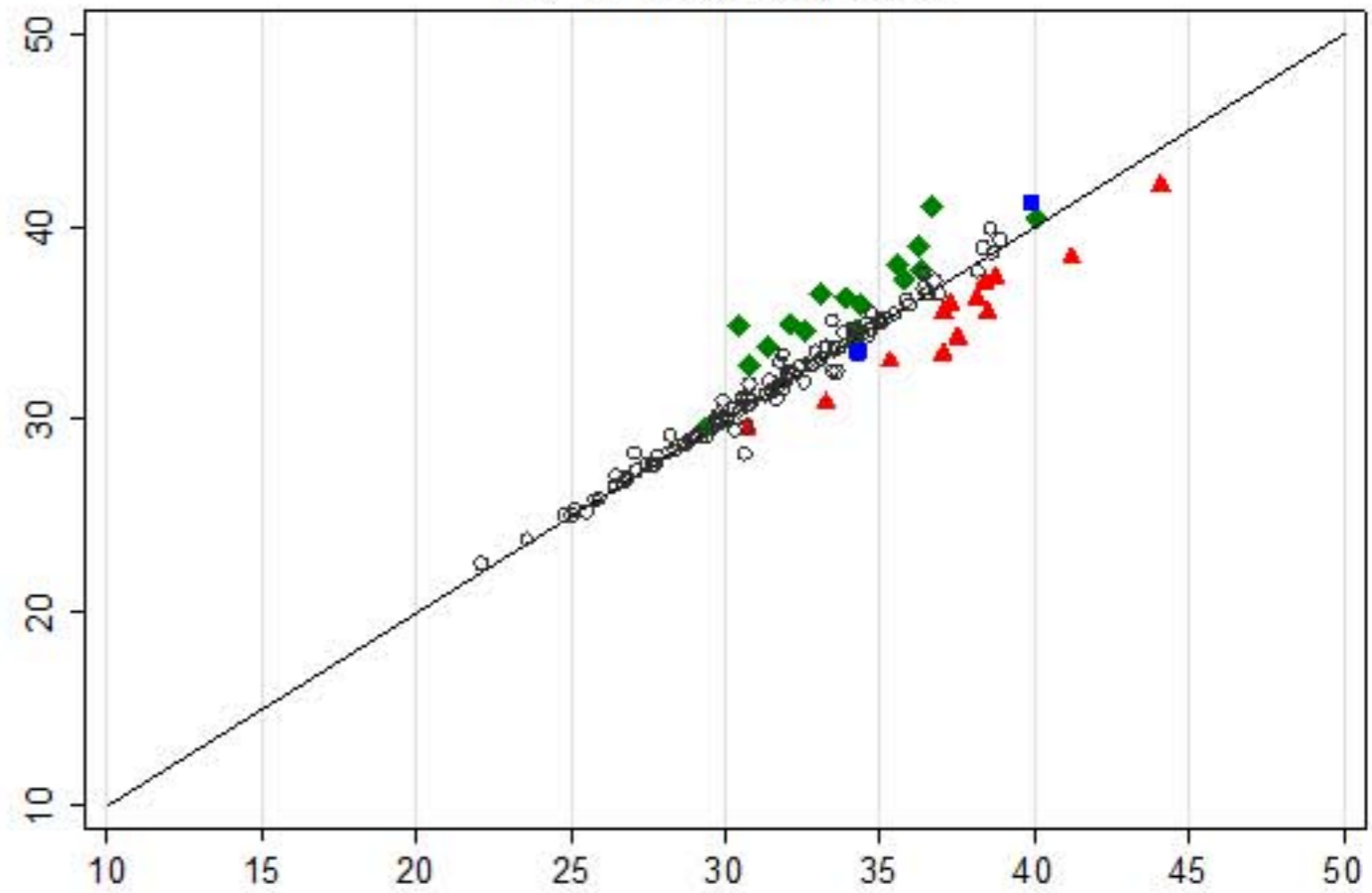
Accepted manuscript

\* Population thresholds: Underweight:  $\leq 2^{\text{nd}}$  centile, Healthy:  $> 2^{\text{nd}}$  and  $< 85^{\text{th}}$  centiles, Overweight:  $\geq 85^{\text{th}}$  centile, Obese:  $\geq 95^{\text{th}}$  centile Overweight-obese:  $\geq 85^{\text{th}}$  centile  
\*\* Only ethnic groups affected by the BMI adjustments presented

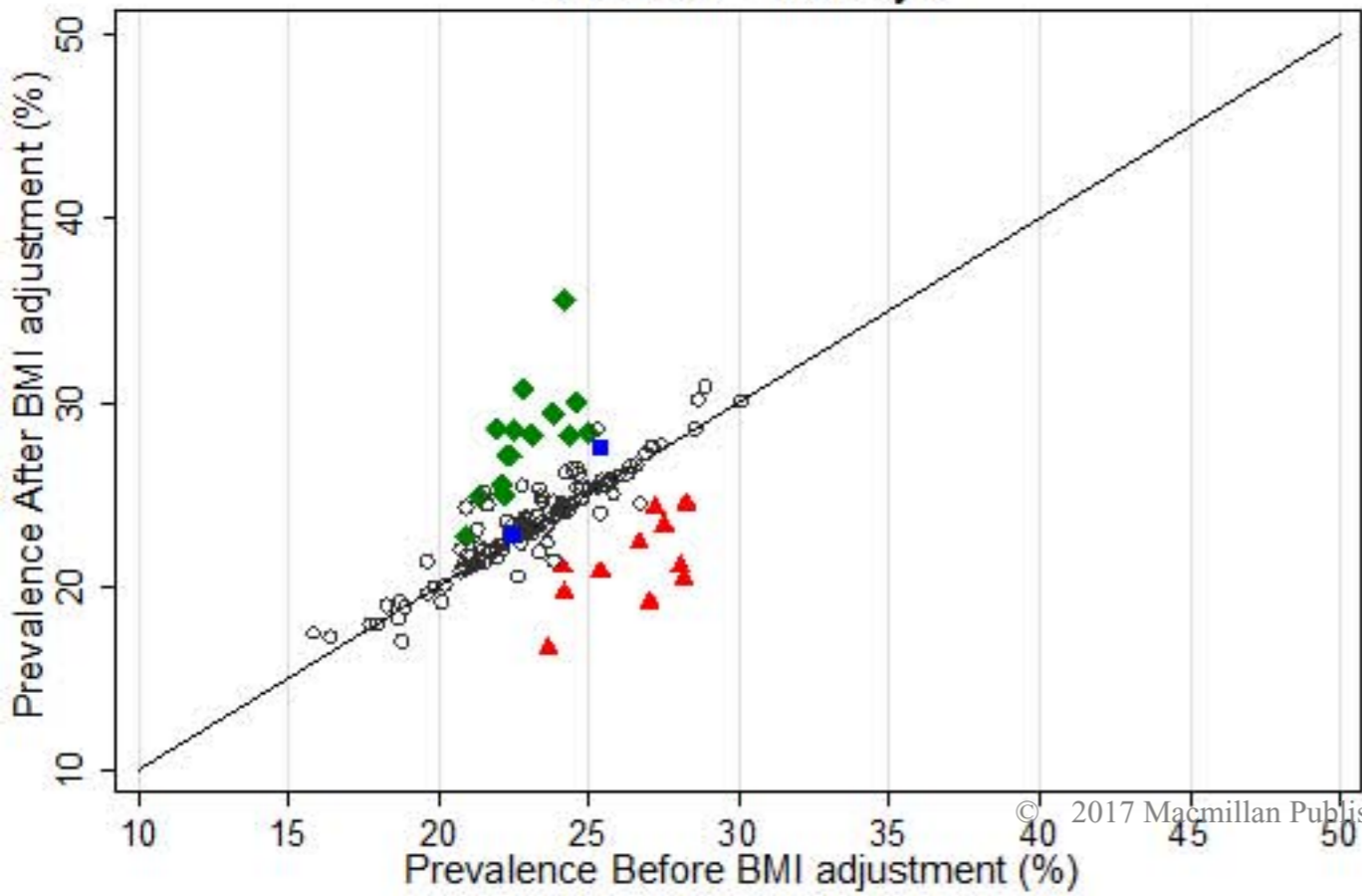
4-5 Year Old Girls



10-11 Year Old Girls



4-5 Year Old Boys



10-11 Year Old Boys

