



Journal Homepage: - www.journalijar.com
**INTERNATIONAL JOURNAL OF
 ADVANCED RESEARCH (IJAR)**

Article DOI: 10.21474/IJAR01/3382
 DOI URL: <http://dx.doi.org/10.21474/IJAR01/3382>



RESEARCH ARTICLE

EMPOWERMENT OF INDIGENOUS WOMEN AND SOCIAL EXCLUSION IN COMBATING POVERTY IN THE STATE OF VERACRUZ MEXICO.

Carlos Medel-Ramírez¹, Juan Ruíz-Ramírez² and Hilario Medel-Lopez³.

1. PhD in Public Finance from the Universidad Veracruzana. Faculty of Economics. Universidad Veracruzana. Av. Xalapa s/n Xalapa Veracruz, Mexico. Line of research: Multidimensional Poverty, Social Exclusion and Citizen Empowerment.
2. Professor at the Faculty of Economics. Universidad Veracruzana. Mexico.
3. Researcher of the Institute of Anthropology. Universidad Veracruzana. Mexico.

Manuscript Info

Manuscript History

Received: 21 December 2016
 Final Accepted: 16 January 2017
 Published: February 2017

Key words:-

Index of social exclusion, indigenous population, main components. Empowerment of indigenous women.

Abstract

In Mexico, the Productive Organization Program for Indigenous Women (POPMI) seeks the empowerment of productive capacities in indigenous women. Our study analyzes POPMI outreach, focusing our attention on women beneficiaries who present a high degree of social exclusion and multidimensional poverty in the State of Veracruz. In the study area, the 542 indigenous women benefited in POPMI, presented a condition of multidimensional poverty and a degree of social exclusion: very high, high and medium, they represent only 22.19% of the total beneficiaries of this program In 2010, since at the state level a total of 2,243 indigenous women were cared for. The results show that the localities where the condition of multidimensional poverty and very high, medium and high levels of social exclusion have been excluded in the coverage of POPMI.

Copy Right, IJAR, 2017,. All rights reserved.

Introduction:-

Recent studies have shown that the indigenous population has been subject to social exclusion, a situation that aggravates their situation of multidimensional poverty (Medel, 2106), making it difficult for them to become socially integrated, access the formal labor market, health services, Education and housing. (Tetreault, 2012; Rionda, 2010; Barba, 2009; Del Popolo et al., 2009; World Bank, 2004; Appasamy et al., 2003) indicate that the indigenous population is subject to social exclusion Due to factors such as: (i) their ethnic status; (ii) their gender status; and (iii) their multidimensional poverty condition. In Mexico, as part of a strategy to combat poverty, the federal government seeks to achieve labor insertion, generation of productive projects and income, access to credit, microcredit and organization for the production of indigenous women. The empowerment of their productive capacities in indigenous women. According to Braddotti (1998), the indigenous women's empowerment strategy seeks to generate the conditions for the construction of their human development and their communities, by increasing their productive capacities in order to achieve personal and community development, A situation that implies a redefinition in its power structure (Batliwala, 1997: 194) and of intragroups and intergroups. The empowerment of indigenous women is aimed at overcoming unfavorable conditions of multidimensional poverty,

Corresponding Author:- Carlos Medel-Ramírez.

Address:- PhD in Public Finance from the Universidad Veracruzana. Faculty of Economics. Universidad Veracruzana. Av. Xalapa s/n Xalapa Veracruz, Mexico. Line of research: Multidimensional Poverty, Social Exclusion and Citizen Empowerment.

gender and ethnicity that prevent access to social and market benefits. One of the strategies for combating poverty,¹ Which seeks to contribute to improving living conditions and social position in indigenous women, through the development of productive projects, providing them with training and economic resources for the operation of the same² Is the Productive Organization Program for Indigenous Women.

It should be noted that in accordance with the Rules of Operation of POPMI its scope of operation is defined in the following:³

1. In localities with 40% and more of indigenous population, and that show a high or very high marginalization, and are outside the municipal head offices;
2. In localities of interest and determined by the Planning and Consultation Unit under the National Commission for the Development of Indigenous Peoples (CDI).
3. In localities located in the municipalities that are in the National System for the Crusade against Hunger, with 40% and more of indigenous population and with a high or very high degree of marginalization.
4. In localities where an Indigenous Micro-regional Development Plan of the CDI has been developed.

Here we have to ask ourselves: What is the scope of POPMI as a strategy for the empowerment of indigenous women in places with multidimensional poverty and social exclusion? This article seeks to analyze the scope of the Productive Organization Program for Indigenous Women, focusing attention on indigenous women beneficiaries who present a high degree of social exclusion and multidimensional poverty.

The main objective of the present work is to identify scenarios in order to define lines of priority attention in support of the strategy for the empowerment of indigenous women in the State of Veracruz, as well as to provide information about the characteristics of indigenous women who were Beneficiaries in 2010, based on the analysis of the degree of multidimensional poverty and social exclusion.

Empowerment of indigenous women in Mexico:-

The first efforts to achieve the empowerment of women in rural Mexico have been through the support of civil associations, as documented (Olivares, 2006; Zapata et al., 2003 (2002), and in the literature (Martínez et al. In the public sphere, it is from the year 2004 when the Social Development Law is established, which defines, among others, the guideline on social development and assign responsibilities, rules of operation and definition of the target population that Is a beneficiary of the various social programs. In the case of POPMI, from 2004 onwards it emerged as a program with rules of operation and a guide for executing agencies.⁴

- According to the final report of the POPMI Evaluation of Consistency and Results 2007, the importance of the program was noted in the following areas:
- Nearly 40% of indigenous women benefiting from POPMI in 2007 and 2008 indicate that they have improved their living conditions compared to the initial year.
- By the end of 2009, it is estimated that at least 20% of the groups benefiting from indigenous women by POPMI since 2007 were still in operation.
- Of the total number of women organized and trained with an approved project in 2008, at least 30% have received training for the development of their project at the end of the year. Of the total of women's groups with

¹ See. INMUJERES. Productive Organization Program for Indigenous Women (POPMI). Retrieved from: <http://padrones.inmujeres.gob.mx/programanio.php?idPrograma=7>

² Productive Organization Program for Indigenous Women (POPMI) is a federal program run by the National Commission for the Development of Indigenous Peoples (CDI), which provides economic support for productive activities such as livestock, agriculture, aquaculture, forestry, handicrafts And services such as bakeries, grocery stores, stationery, among others, indigenous women's groups belonging to communities classified as marginalized, where the products derived from these activities can be for consumption or for marketing, technical assistance And training. See. Http://www2.cdi.gob.mx/menu_1.html

³ See. AGREEMENT for Modification to the Rules of Operation of the Productive Organization Program for Indigenous Women (POPMI), in charge of the General Coordination of Promotion of Indigenous Development for fiscal year 2013.) Retrieved from: http://www2.cdi.gob.Mx/popmi_reglas_de_operacion_2013.pdf

⁴ See. Center for Studies on the Advancement of Women and Gender Equity. Public policies, federal programs and budget targeting women from 2006 to 2009. Recovered from: Http://www.diputados.gob.mx/documentos/CEAMEG/POLITICAS_CEAMEG.pdf

a project authorized in 2008, at least 40% received information and training for the development of their project and on issues of equity, gender, rights and interculturality"⁵

As a strategy, the POPMI aims to replace the status of indigenous beneficiary women traditionally considered as passive subjects by the active actors, as is the proposal of (Sen, 2003: 44), in this way, the value of networks Social, grassroots organization and cooperative productive schemes in support of indigenous women.⁶ However, it is important to note that at present, the operation of federal social development programs and their impact on the empowerment of indigenous women has not been analyzed, through the direct benefit of the public resources applied in the localities which present multidimensional poverty and social exclusion.

At the national level, in 2014, 46.2% of the population is in poverty, of which 9.5% are in extreme poverty. At the state level, in the year 2014 in State of Veracruz 58.0% of the population is located in a condition of poverty, which represents 4.4 million people; While extreme poverty represented 17.2%, or 1.3 million in extreme poverty.⁷ It is important to note that the poverty condition is more evident in the indigenous population than in the non-indigenous population. In this way, in the year 2014, 73.2% of the indigenous population was found to be in poverty, while only 43.2% of the non-indigenous population is in this condition. From the information provided by CONEVAL, it can be observed that in the year 2014, the states that increased levels of poverty and extreme poverty are: Morelos, Veracruz, Oaxaca, State of Mexico, Sinaloa, Coahuila, Hidalgo, Baja California Sur.⁸ The State of Veracruz's Poverty and Assessment Report 2014, of the 32 entities, ranked the seventh in percentage of the population in poverty and the fourth in percentage of the population in extreme poverty.⁹ Therefore, it is located within the ten institutions with the highest poverty in the country, where in 186 municipalities out of a total of 212, that is, 87.7% are in poverty.

Theoretical framework:-

Social exclusion as a social phenomenon has been addressed by: Medel (2016); Tetreault (2012); Rionda (2010); Del Popolo et al. (2009); Barba (2009); Laparra et. to the. (2007); Hickey (2007); Sen and Kliksberg (2007); Subirats et al. (2004); Uquillas et al. (2003); Estivill (2003); Sen (2003); Cabrera (2002); Sen (2000); Barry (1998); Appasamy et al. (1996); Castel (1995); Renes (1993); Donzelot (1992).

Social exclusion:-

The concept of social exclusion has to do with the process through which individuals or groups are totally or partially excluded from the society where they live, being that this category refers not only to the lack of employment. In this sense Subirats *et al.* (2004: 17) recognize that social exclusion is related to employment and the welfare state. While with Donzelot (1992); Renes (1993); Castel (1995) recognizes that social exclusion is not a concept of economic theory, its central paradigm being: scarcity, situation that leads to raise the issue in terms of poverty / wealth, equality / inequality in the possession and use of the goods produced. Barry (1998) points out that there is an association between income dispersion and social exclusion, and that public policy can make the difference between the degree of inequality that manifests itself in social exclusion. In a broader sense Sen and

⁵ See. Autonomous University of Chapingo (2008). Final report: From the POPMI 2007 consistency and results evaluation p. 152.

⁶ The POPMI program includes the equity and gender approach which seeks to encourage indigenous women who are assisted in the program to provide knowledge of their rights, seeking to raise their self-esteem and contribute to the empowerment of indigenous women in areas of very high and high marginalization And with little or no organizational experience, giving them the unique opportunity to organize themselves around a productive project to develop their skills and abilities and to integrate themselves with superior forms of organization that allow them to improve their quality of life. Final report: From the 2007 consistency and results evaluation of POPMI Op. Cit. Pp.10.

⁷ See. CONEVAL (2015) Measuring poverty in Mexico and in the states. 2014. Retrieved from: [Http://www.coneval.gob.mx/Medicion/Documents/Pobreza%202014_CONEVAL_web.pdf](http://www.coneval.gob.mx/Medicion/Documents/Pobreza%202014_CONEVAL_web.pdf) consulted on April 7, 2016

⁸ See. CONEVAL. Measuring poverty in Mexico and in the federative entities. 2014

⁹ Medel-Ramírez Carlos. (2013) "Multidimensional Poverty, Indigenous Population and Social Exclusion in Mexico: A Look at the National Crusade against Hunger Program (SINHAMBRE 2013)" Retrieved from: [Http://www.academia.edu/7085028/Pobreza_multidimensional_poblaci%C3%B3n_ind%C3%ADgena_y_exclusi%C3%B3n_social_en_Mexico_Una_mirada_al_Programa_Cruzada_Nacional_contra_el_Hambre_SINHAMBRE_2013_](http://www.academia.edu/7085028/Pobreza_multidimensional_poblaci%C3%B3n_ind%C3%ADgena_y_exclusi%C3%B3n_social_en_Mexico_Una_mirada_al_Programa_Cruzada_Nacional_contra_el_Hambre_SINHAMBRE_2013_)

Kliksberg (2007:27) consider that the set of deprivations or deficiencies not only corresponds to the material or economic aspect, but can also extend to other dimensions, that is, that limit the development of capacities in the people to lead a full and dignified life in the society in which they live, this set is what is called social exclusion. Finally, we agree with Hickey and du Toit (2007:3) in the sense that the phenomenon of social exclusion must recognize the perspective of class, ethnicity and gender, a situation that generates a multidimensional analysis of poverty, (2016a:134) proposes to integrate social exclusion as a missing dimension in the study and measurement of multidimensional poverty of Alkire-Foster (2007). For purposes of the present work, it is considered: **Definition 1. Social exclusion** is the "combination of various factors of social disadvantage or vulnerability that affect individuals and / or groups, which prevent or hinder access to mechanisms for development and social integration, as well as protection systems Social. "(Subirats et al., 2004: 19)

The phenomenon of social exclusion occurs both in the population living in poverty and in the one that does not have this condition. Estivill (2003: 20) points out in this regard that social exclusion and poverty are not equivalent. "You can be poor and not excluded and, conversely, not all the excluded are poor... although there is a broad circle in which poor and excluded people coincide." The measurement proposal is presented in Laparra et. Al (2007: 27) in pointing out that social exclusion is analyzed from the economic, political and social dimensions. In the economic dimension, social exclusion is manifested by the lack of access to the labor market and its normal salaries and wages, reflecting a decline in the share of consumption, a situation that generates poverty and economic deprivation. Cabrera, (2002: 84) refers that social exclusion is a social process of a structural character and that even in the presence of abundance, the limitation of access to goods and opportunities is observed. This is why (Sen and Kliksberg, 2007) summarize that social exclusion reflects a set of deficiencies or deprivations, which is not only totally limited to the material or economic, but can extend to other dimensions that limit people's capacities to Lead a full, dignified and decent life in the society in which they live. In (Medel, 2016) a methodological proposal is presented for the estimation of the social exclusion index from the adaptation (Subirats et al., 2004: 19) and from the considerations of (Sen and Kliksberg, 2007).

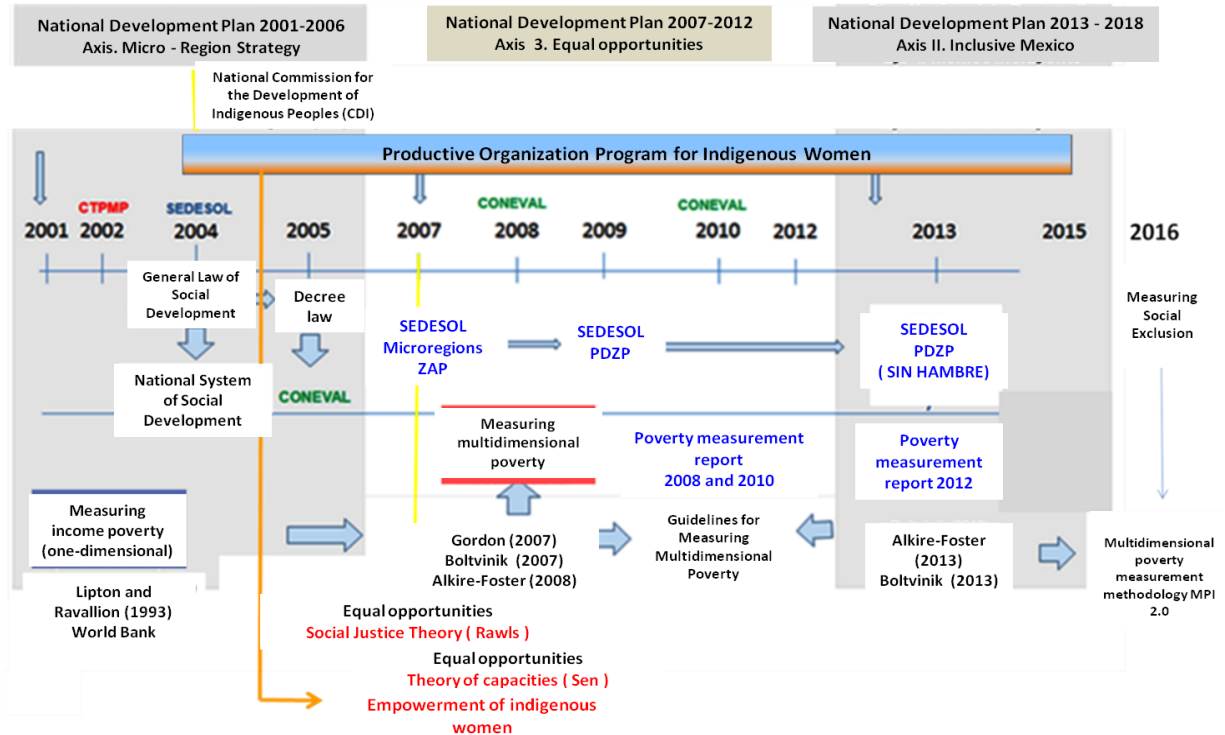
Multidimensional Poverty:-

In Mexico, poverty is a subject that has been extensively studied; however, the multidimensional poverty approach is relatively new. It is from (Sen, 2000: 3) that poverty is conceived as the deprivation of basic capacities and not only in terms of low income. In the logic proposed by Sen (Boltvinik, 2013: 25) defines poverty as a multidimensional process and Alkire-Foster (2007: 15) present a methodology that allows identifying two cuts, identified with the poverty line and deprivation In people identified as poor. In Mexico, the responsibility for determining the methodological criteria for the measurement of multidimensional poverty rests, by constitutional mandate in the Secretariat of Social Development (SEDESOL) supported by the National Council for the Evaluation of Social Development Policy (CONEVAL), which define To multidimensional poverty in the following terms: **Definition 2. Multidimensional poverty.** "A person is in poverty when he / she has at least one social deficit (in the six indicators of educational backwardness, access to health services, access to social security, quality and housing spaces, basic housing services and Access to food) and their income is insufficient to acquire the goods and services they require to meet their food and non-food needs. "¹⁰

As an institutional strategy that seeks to reduce vulnerability and increase the capacities of the poor and marginalized sectors, in order to promote human and sustainable development, in accordance with the National Development Plan 2001-2006, Based on the strategy that sought to promote the active participation of indigenous peoples in national development, in order to combat lags and marginalization respecting their uses and customs. The following Graph 1 shows the evolution of the multidimensional poverty approach and the empowerment of indigenous women in Mexico.

¹⁰ See. CONEVAL. [Http://www.coneval.org.mx/Medicion/Paginas/Glosario.aspx](http://www.coneval.org.mx/Medicion/Paginas/Glosario.aspx)

Graph 1:- Evolution of the multidimensional poverty approach and Empowerment of indigenous women in Mexico. 2004-2016.



Source: Own elaboration. Adapted from Medel-Ramírez C. (2016). "Evaluation of the degree of social exclusion and multidimensional poverty in the indigenous communities in the State of Veracruz: The case of the program of development of priority areas." (Doctoral thesis). Economy faculty. PhD in Public Finance. Universidad Veracruzana. Mexico.

Empowerment:-

POPMI emerged in 2004, being the responsibility of the National Commission for the Development of Indigenous Peoples (CDI), its main objective is to promote and finance the implementation of productive projects for indigenous women, through the promotion of processes Which, in addition to providing them with employment and income alternatives, will have an impact on their living conditions and social position, thereby achieving empowerment. Friedman (1992: 12) states in the following terms: **Definition 3. Empowerment** "... is a process related to access and control of three types of powers: a) social, understood as access to the basis of productive wealth; b) the political, or access of individuals to the decision-making process, especially those that affect their own future; And c) the psychological, understood in the sense of individual potentiality and capacity." In recent years the priority of the Mexican State and one of its central objectives in social policy is the fight against poverty. In this way, one of the strategies seeks to achieve the empowerment of the population in poverty, and particularly, in indigenous women. There is now an academic debate on how to measure social exclusion and multidimensional poverty. In this sense, (Medel, 2016) presents the methodological proposal to incorporate as a relevant dimension in the study of multidimensional poverty to social exclusion, in order to seek an explanation of the current situation of multidimensional poverty, and in particular the one that is manifested in the localities of the State of Veracruz that register a high degree of presence of native speakers.

Methodology:-

Definition of the area of study:-

The study area is the State of Veracruz in Mexico and corresponds to the localities with population that present a high degree of presence of native speakers, with a very high or high degree of social exclusion and multidimensional poverty in the Year 2010. A first survey of the area of study is determined by the incorporation in POPMI, thus identifying indigenous women who are beneficiaries of a program that seeks their productive empowerment in the State of Veracruz.

Sources of information:-

The level of consultation of information corresponds to that presented at the level of territorial integration and whose level of disaggregation corresponds to the localities of the State of Veracruz. The data source corresponds to that contained in the statistical information of the General Census of Population and Housing of the year 2010 issued by the National Institute of Statistics and Geography (INEGI), as well as the information for 2010 of the Productive Organization Program for Indigenous Women (POPMI) issued by the National Commission for the Development of Indigenous Peoples (CDI). The estimation of the degree of social exclusion and multidimensional poverty at the local level for the year 2010 is presented in (Medel, 2016b) below is a brief description.

Index of social exclusion:-

The index of social exclusion (ES) is constructed as a weighted sum of 16 variables. For its construction, the main component method is used and the coefficients of the first component are weights. The selection of the variables is an adaptation proposed by (Medel, 2016b) of (Subirats, 2004). The data source corresponds to the statistical information contained in the General Census of Population and Housing for 2010.

Index of social exclusion:-

The index of social exclusion (ES) is constructed as a weighted sum of 16 variables. For its construction, the main component method is used and the coefficients of the first component are weights. The selection of the variables is an adaptation proposed by (Medel, 2016b) of the (Subirats, 2004). The data source corresponds to the statistical information contained in the General Census of Population and Housing for 2010.

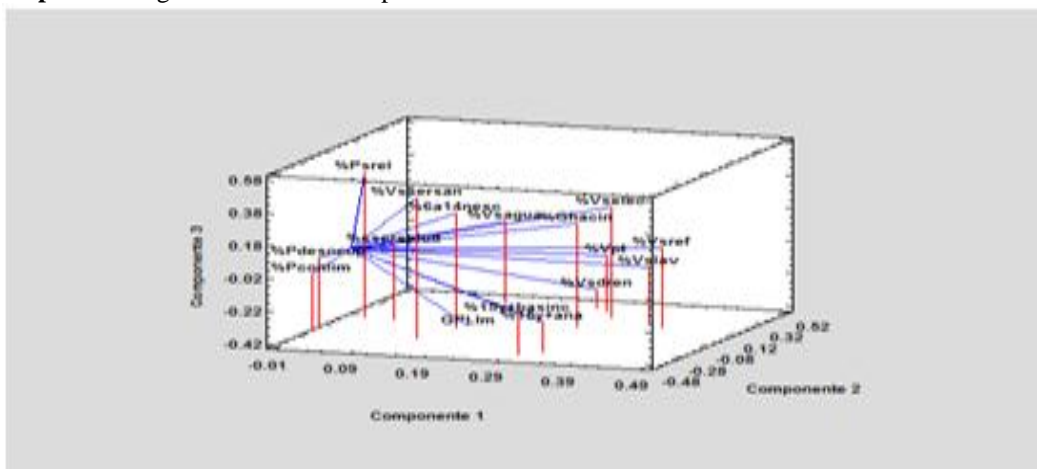
| ID. | Key | Description |
|-----|--------------|---|
| 1 | % 15y+ana | Percentage of population aged 15 years and over illiterate. |
| 2 | % 6a14nesc | Percentage of the population aged 6 to 14 years who do not attend school. |
| 3 | % 15y+basinc | Percentage of population aged 15 and over who have incomplete basic education. |
| 4 | % sssersalud | Percentage of population without right to health service. |
| 5 | % Vpt | Percentage of dwellings with ground floor. |
| 6 | % Vssersan | Percentage of households without health care. |
| 7 | % Vsagua | Percentage of private dwellings that do not have piped water. |
| 8 | % Vsdren | Percentage of inhabited private dwellings that do not have drainage. |
| 9 | % Vselec | Percentage of private dwellings inhabited that do not have electricity. |
| 10 | % Vslav | Percentage of private dwellings that do not have a washing machine. |
| 11 | % Vsref | Percentage of private dwellings that do not have a refrigerator. |
| 12 | % Pconlim | Percentage of population with disabilities. |
| 13 | % Pdesocup | Percentage of unoccupied population. |
| 14 | % GPLIm | Degree of presence of indigenous language. |
| 15 | % Ghacin | Degree of overcrowding in housing. |
| 16 | % Psrel | Percentage of population aged 5 years and over non-Catholic (includes non-religious). |

In the estimation of social exclusion index the multivariate statistical technique is used using principal components. The information was processed with the application software Statgraphics Centurion XVII version 17.0.16 (32 bits) and XLSTAT Version 2015.4.01.22368.

Social exclusion index = 0.339966 *% 15y + ana + 0.159867 *% 6a14nesc + 0.313252 *% 15y + basinc + 0.0631256 *% sssersalud + 0.297299 *% Vpt + 0.146342 *% Vssersan + 0.150605 *% Vsagua + 0.276032 *% Vsdren + 0.321636 *% Vselec + 0.386768 *% Vslav + 0.414214 *% Vsref - 0.00415242 *% Pconlim - 0.00461739 *% Pdesocup + 0.171148 * GPLIm + 0.306127 *% Ghacin + 0.0204543 *% Psrel

Where the values of the variables in the equation have been standardized by subtracting their mean and dividing them by their standard deviations, this is shown in Graph 2.

Graph 2:- Weights of the main components in the estimation of the index of social exclusion 2010.



Source: Own estimates based on data from the General Population and Housing Census 2010, main results by location.

Because the index of social exclusion, by the way in which it is constructed, serves the purpose of ordering the different units of observation (localities, municipalities and states), these were stratified into five categories, so that within Each category the units were as homogeneous as possible and among the strata as different as possible. The stratification technique of Dalenius and Hodges serves this purpose. Establishing the classification of five categories to define the degree of social exclusion, taking into account the following:

Degree of social exclusion (GIES)

| | | | |
|-----------|-----------|---|-----------|
| Very high | 7.375186 | - | 10.5691 |
| High | 4.181272 | - | 7.375186 |
| Half | 0.987358 | - | 4.181272 |
| Low | -2.206556 | - | 0.987358 |
| Very Low | -5.40047 | - | -2.206556 |

The multidimensional poverty index (MPI):-

Developed by Alkire-Foster (2007: 15) and applied by Oxford Poverty & Human Development Initiative (OPHI) is an indicator that reflects the deprivation of households in different dimensions. In this sense, the MPI allows to observe patterns of poverty different from those of monetary poverty, reflecting different sets of deprivations. The possibility of analyzing multiple dimensions of poverty is one of the reasons for adopting a multidimensional poverty index. In addition, the methodology fulfills a number of useful properties for the analysis of multidimensional poverty, and since it is constructed with variables susceptible of modification through public policy, they make it a useful instrument for the design and monitoring of the public policy of the poverty reduction. According to Alkire-Foster (2007: 15) the method consists of two stages:

Given a population of n individuals, a set of dimensions d, and a cut-off value for each dimension (Zj; j = 1, d), it is required to identify those dimensions in which the individual encounters one or more deprivations; And identification of the number of deprivations for each individual is required.

In this way, those whose number of deprivations equals or exceeds a specific cutoff value (k) of deprivations are identified as poor. In this sense, Alkire-Foster proposes a stage of identification and integration. With regard to the identification stage, which seeks to respond who is poor? Shows the following characteristics:

- The union approach (which requires deprivation in all dimensions to classify a person as poor, $k = d$)
- The intersection approach (which requires deprivation in a single dimension to classify someone as poor, where $k = 1$, are special cases.

The multidimensional poverty index is constructed according to the Alkire-Foster method:

Multidimensional poverty index = $M_0 = H \times A$

Where:

H = The percentage of people who are poor, shows the incidence of multidimensional poverty.

A = The average of the proportion of weighted deprivations suffered by the poor. It shows the intensity of people's poverty - the joint distribution of their deprivation, where:

Being thus

$$M_0 = \mu(g^0(k)) = \frac{\sum_{i=1}^n \sum_{j=1}^d g_{ij}^0(k)}{nd}$$

The multidimensional poverty index satisfies properties such as consistency by subgroups, dimensional monotonicity, focus on poverty and deprivation. Since it is desired to have a multidimensional poverty index to analyze the periods 2000 and 2010 which allows the comparability of information through different periods in time and taking into account that satisfying the homogeneity of the information, the data source corresponds to the General Census of Population and Housing 2000 and 2010.

Study population.- In 2010, out of a total of 12,162 localities analyzed at the state level, 49.95% were placed in multidimensional poverty, ie 6,075 localities. Within this group 2,274 localities showed in addition to the condition of multidimensional poverty, a degree of social exclusion with levels: very high, high and medium.¹¹

Be:-

Tot_Loc = Total locations in 2010 in the State of Veracruz (12,162 locations)

A first dimension of the study area is done by identifying the condition of multidimensional poverty (^{poor} IPM)¹²

Where:-

^{Poor} IMP = Multidimensional poverty index, where its "multidimensional poor" status is identified.

A second dimension, corresponds to the localities that show a degree of exclusion Very High, High and Medium.

Where:-

GES^{Very High, High, Medium} = Degree of exclusion Very High, High, Medium

A third item corresponds to the localities benefited and that operated in the Productive Organization Program for Indigenous Women (POPMI).

Be:

% APOPMI_{loc} = Level of coverage of POPMI to give attention to localities that are multidimensional poor and have a very high, high and medium degree of social exclusion.

Where:

% APOPMI_{loc} = [(POPMI_{loc} IPM Poor Multidimensional, GES^{Very High, High, Medium}) / POPMI_{loc}] x 100

where:

POPMI_{loc} IPM Poor multidimensional, GES^{Muy high, High, Medium}) = Locations that are multidimensional poor and have a very high, high and medium Degree of Social Exclusion.

¹¹ See. Medel-Ramírez C. (2016a) "Evaluation of the degree of social exclusion and multidimensional poverty in indigenous communities in the State of Veracruz: The case of the program of development of priority areas." *Op. Cit.*

¹² The multidimensional poverty index (MPI) corresponds to that developed by Alkire-Foster (2007) and the Oxford Poverty & Human Development Initiative (OPHI), an indicator that reflects the deprivation of households in different dimensions. In this sense, the MPI allows to observe patterns of poverty different from those of monetary poverty, reflecting different sets of deprivations. The estimates referred to here for 2010 incorporate as a relevant dimension, social exclusion. Section 3.4.1 Multidimensional Poverty Index at the Local Level for the State of Veracruz, In: Medel-Ramírez C. (2016a) "Evaluation of the degree of social exclusion and multidimensional poverty in indigenous communities in the State of Veracruz: The case of Program for the development of priority areas." *Op.cit.* Pp. 115-137.

and:

POPMI_{loc} = Locations incorporated in the Productive Organization Program for Indigenous Women (POPMI) in 2010.

Where:

% APOPMI_{loc} = [(POPMI_{loc} IPM Poor Multidimensional, GES^{Very High, High, Medium}) / POPMI_{loc}] x 100

Where:

(POPMI_{loc} IPM Poor multidimensional, GES^{Muy high, High, Medium}) = Locations that are multidimensional poor and have a very high, high and medium Degree of Social Exclusion.

and:

POPMI_{loc} = Locations incorporated in the Productive Organization Program for Indigenous Women (POPMI) in 2010.

According to information provided by the CDI, in 2010 POPMI operated in 55 municipalities out of a total of 212, covering 196 localities in the State of Veracruz benefiting 2,443 indigenous women, with a contribution of 20,128,492.60 pesos for projects aimed at empowerment Indigenous women.

Results and Discussion:-

In order to evaluate the scope of the POPMI, as a strategy of productive empowerment of indigenous women, in the State of Veracruz in 2010, localities showing conditions of multidimensional poverty and social exclusion, the following results are presented, see below Table 1.

Table 1:- Localities in the State of Veracruz of Ignacio de la Llave, according to condition of multidimensional poverty, exclusion and participation in the Productive Organization Program for Indigenous Women (POPMI), 2010.

| Characteristic of the location according to the selected condition | Number of locations |
|---|---------------------|
| 1. Number of places of study / 1 | 12,162 |
| 2. Locations according to the condition of multidimensional poverty: / 2 | |
| — Poor multidimensional | 6,075 |
| — Not poor multidimensional | 6 087 |
| 3. Localities according to the condition of multidimensional poverty and degree of social exclusion: / 3 | |
| — In a condition of multidimensional poverty and with a high degree of social exclusion, high and medium. | 2,274 |
| — In a multidimensional poverty condition with a degree of social exclusion: Low and Very Low. | 3,801 |
| 4. Productive Organization Program for Indigenous Women (POPMI) | |
| — Locations participating in POPMI / 4 | 197 |
| — Locations participating in POPMI in a condition of multidimensional poverty and with a high degree of social exclusion, high and medium. /2. 3. 4 | 47 |

Source: Own elaboration, based on the following information:

INEGI. Territorial integration of the State of Veracruz of Ignacio de la Llave. 2010.

2/3 Medel-Ramírez C. (2016a) "Evaluation of the degree of social exclusion and multidimensional poverty in the indigenous communities in the State of Veracruz: The case of the program of development of priority areas" (Doctoral Thesis). Economy faculty. PhD in Public Finance. Universidad Veracruzana. Mexico. March 2016.

/ 4 National Commission for the Development of Indigenous Peoples. Productive Organization Program for Indigenous Women (POPMI). 2010.

It stands out in the year 2010 of the 12,162 localities, 6,075 localities present a multidimensional poverty condition, which represents 49.95% of the total localities in the State.

In a first estimate, the number of localities in a multidimensional poverty condition with a degree of social exclusion: very high, high or medium is 2,274. In 2010, 197 localities of the State of Veracruz participated in the POPMI, of these only 47 localities present a condition of multidimensional poverty and very high, medium or high degree of exclusion; In the following municipalities: Chicontepec, Atlahuilco, Coxquihui, Filomeno Mata, Hueyapan de Ocampo, Iamatlán, Ixcatepec, Los Reyes, Mecatlán, Pajapan, Papantla, Santiago Sochiapan, Soledad Atzompa, Tehuipango, Temapache, Tequila, Texcatepec, Tezonapa, Tlaquilpa, Xoxocotla, Zongolica, Zontecomatlán de López and Fuentes. POPMI localities in a multidimensional poverty situation and also show a degree of social exclusion: very high, high and medium, represent 23.86% of the total number of localities that operated in the program in 2010 (Table 2).

Table 2:- Number of Indigenous Women Benefited in the State of Veracruz de Ignacio de la Llave, according to the condition of multidimensional poverty, exclusion and participation in the Productive Organization Program for Indigenous Women (POPMI), 2010.

| Indigenous women participating in POPMI according to selected characteristics | Total |
|---|-------|
| 1. Productive Organization Program for Indigenous Women (POPMI) | |
| — Number of indigenous women participating in POPMI / 4 | 2,443 |
| — Number of indigenous women participating in POPMI in multidimensional poverty. | 1,389 |
| — Number of indigenous women participating in POPMI who are not in a multidimensional poverty condition. | 1,054 |
| — Number of indigenous women participating in POPMI in a situation of multidimensional poverty and with very high, medium and high degree of social exclusion. /2. 3. 4 | 542 |
| — Number of indigenous women participating in POPMI in a multidimensional poverty condition with low social exclusion / 2/3/4 | 847 |

Source: Own elaboration, based on the following information:

/ 1 INEGI. Territorial integration of the State of Veracruz of Ignacio de la Llave. 2010.

/ 2/3 Medel-Ramírez C. (2016a) "Evaluation of the degree of social exclusion and multidimensional poverty in the indigenous communities in the State of Veracruz: The case of the program of development of priority areas" (Doctoral Thesis). Economy faculty. PhD in Public Finance. Universidad Veracruzana. Mexico. March 2016.

/ 4 National Commission for the Development of Indigenous Peoples. Productive Organization Program for Indigenous Women (POPMI). 2010.

In 2010 2,443 indigenous women were beneficiaries in POPMI, of which 56.86% were in multidimensional poverty, that is, 1,389 indigenous women benefited in POPMI in 2010 were placed in a condition of multidimensional poverty (See Table 2). With regard to indigenous women who were in a situation of multidimensional poverty and who participated in POPMI in 2010, only 39.02% had a very high, high and / or medium degree of social exclusion, which corresponds to 542 indigenous women benefited. While 60.98% correspond to indigenous women who showed a low degree of social exclusion. Table 3 shows that the total amount applied in the program of 20,128,493.00 pesos, of which 11,241,656.00 pesos were channeled to localities in situation of multidimensional poverty, however, it is important to note that only 4,460,016.00 pesos were channeled for generation Of productive projects of indigenous women who present a condition of multidimensional poverty and very high, medium or high degree of social exclusion, a figure that represents only 22.16% for the population in vulnerable situations. It is also noted that 58.86% of the allocation of POPMI resources is allocated to the population of Nahuatl, 13.35%, for Totonaco speakers, 5.16%, Otomí speakers, 4.00%, Popoluca, 0.80%, Tepehua and Others with 17.83%. See Table 3 below.

Table 3:- Total amount allocated in the Program Productive Organization for Indigenous Women (POPMI) 2010 according to condition of multidimensional poverty, social exclusion and indigenous language.

| Characteristics of POPMI according to selected conditions | Total (Pesos) |
|--|---------------|
| 1. Productive Organization Program for Indigenous Women (POPMI). /1 | 20,128,493 |
| 2. Applied in localities according to the condition of multidimensional poverty / 2 | |
| — Poor multidimensional | 11,241,656 |
| — Not poor multidimensional | 8,886,837 |
| 3. Applied in localities according to the condition of multidimensional poverty and degree of social exclusion: / 1/2 | |
| — In a condition of multidimensional poverty and with a high degree of social exclusion, high and medium. | 4,460,016 |
| — In a multidimensional poverty condition with a degree of social exclusion: Low and Very Low. | 6,781,640 |
| 4. Applied in localities according to the condition of multidimensional poverty, degree of social exclusion very high, high and medium and indigenous language: / 1/2 | 2,625,202 |
| — Nahuatl | 595,311 |
| — Totonaco | 230,300 |
| — Otomí | 178,315 |
| — Popoluca | 35,860 |
| — Tepehua | 795,028 |
| — Others | |

Source: Own elaboration, based on the following information:

/ 1 National Commission for the Development of Indigenous Peoples. Productive Organization Program for Indigenous Women (POPMI). 2010.

/ 2 Medel- Ramírez C. (2016a) "Evaluation of the degree of social exclusion and multidimensional poverty in indigenous communities in the State of Veracruz: The case of the program of development of priority areas." Op. Cit.

In the following table 4, it is observed that the total resources allocated in the POPMI 20,128,493 pesos were distributed in localities in situation of multidimensional poverty the sum of 11,241,656 pesos, which represents 55.85%. Regarding the sum of resources allocated to POPMI to indigenous women who are placed in a multidimensional poverty condition, it is observed that 4,370,585 pesos were allocated to those that showed a high level of social exclusion, high and medium, as a whole Represented 34.59% of the resources allocated under this category. On the other hand, 6,871,071 pesos were allocated, that is, 61.12% were applied to the benefit of indigenous women who were placed in a condition of low social exclusion.

According to the social problems detected in the localities of origin of indigenous women benefited in POPMI in 2010, it is highlighted that of the total resources allocated in POPMI, 28.13% were allocated to indigenous women whose social problems identified correspond to the Economic area, in which 5,661,998 pesos were allocated. Of this last figure, 69.20% is destined in localities where a lack of employment or emigration was identified; and 19.08% went to localities where poverty or marginalization was identified.

Table 4:- Total amount allocated in the Program Productive Organization for Indigenous Women (POPMI) 2010 according to the condition of multidimensional poverty, social exclusion and social problems of economic area identified in the locality.

| Characteristics of POPMI according to selected conditions | Total (Pesos) |
|--|---------------|
| 1. Productive Organization Program for Indigenous Women (POPMI). /1 | 20,128,493 |
| 2. Applied to locations in multidimensional poverty conditions: / 2 | |
| — Poor multidimensional | 11,241,656 |
| 3. Applied in localities in multidimensional poverty condition according to degree of social exclusion | |
| — Very high degree of social exclusion | 75,835 |
| — Degree of high social exclusion | 165,220 |
| — Degree of average social exclusion | 4,129,530 |
| — Degree of low social exclusion | 6,871,071 |
| 4. Applied to localities in multidimensional poverty condition according to social problems of an economic nature detected in the locality: / 1/2 | 5,661,998 |
| — Lack of employment or emigration | 3,917,972 |
| — Poverty or marginalization | 1,080,472 |
| — Lack of road or transportation | 364,579 |
| — Drought, flood or adverse weather | 130,000 |
| — Lack of financial resources | 93,140 |
| — Irregularity or dispute related to land tenure | 75,835 |

Source: Own elaboration, based on the following information:

/ 1 National Commission for the Development of Indigenous Peoples. Productive Organization Program for Indigenous Women (POPMI). 2010.

/ 2 Medel-Ramírez C. (2016a) "Evaluation of the degree of social exclusion and multidimensional poverty in indigenous communities in the State of Veracruz: The case of the program of development of priority areas." Op. Cit.

In 2010, the total number of indigenous women benefited in POPMI was 2,443; For its part, the number of indigenous women in multidimensional poverty and with a high level of social exclusion, high and medium, correspond only to 542 beneficiaries in POPMI in that year. See Table 5.

The resources granted by the POPMI were distributed mainly among indigenous women aged 30 to 39 years, which represents 27.09%; For its part, support for indigenous women aged 60 and over represented only 6.95%.

The next Table 5 shows the analysis of multidimensional poverty throughout the period 2000 and 2010, which correspond to 2,443 indigenous women beneficiaries in the POPMI program, classified according to the multidimensional poverty condition shown in the locality corresponding to the year 2010.

Table 5:- Number of Women benefited from the Program Productive Organization for Indigenous Women (POPMI) / 1 according to their condition of multidimensional poverty / 2, exclusion / 3 in localities of the State of Veracruz, from 2000 to 2010.

| Evolution of the condition of multidimensional poverty | 2000 | 2010 | Estimate |
|--|---------------------------|---------------------------|----------|
| Number of women benefited in localities that improved their condition of multidimensional poverty. | Poor multidimensional | Not poor multidimensional | 619 |
| Number of Women benefited in localities that worsened their condition of multidimensional poverty. | Not poor multidimensional | Poor multidimensional | 504 |
| Number of Women benefited in localities that maintain positive stability in their condition of multidimensional poverty. | Not poor multidimensional | Not poor multidimensional | 424 |

| | | | |
|--|-----------------------|-----------------------|-------|
| Number of Women benefited in localities that maintain negative stability in their condition of multidimensional poverty. | Poor multidimensional | Poor multidimensional | 885 |
| Number of Women benefited in localities without comparability in the year 2000 to 2010. | Not comparable | Not comparable | 11 |
| Total of women benefited in POPMI. | | | 2,443 |

Source: Own elaboration, based on the following information:

/ 1 National Commission for the Development of Indigenous Peoples. Productive Organization Program for Indigenous Women (POPMI). 2010.

/ 2 Medel-Ramírez C. (2016a) "Evaluation of the degree of social exclusion and multidimensional poverty in indigenous communities in the State of Veracruz: The case of the program of development of priority areas." Op. Cit.

/ 3 The degree of exclusion is considered very high, high and medium.

"Not comparable" means is not available for comparability 2000 to 2010.

Of these, 619 indigenous women benefited from the POPMI program were located in villages that show an improvement in their multidimensional poverty status, from a multidimensional poverty in 2000 to a multidimensional non-poor in 2010. From the localities that present this characteristic are the municipality of Cosamaloapan de Carpio when registering 65 indigenous women benefited in the POPMI followed by Chicontepec with 52, Uxpanapa and Coyutla with 47 each.

For its part, 424 indigenous women benefited in the POPMI were located localities that show a favorable position since in 2000 they were non-poor multidimensional and this condition is maintained in 2010. The municipality of Tatahuicapan de Juárez registered 53 indigenous women, Uxpanapa with 47, Coyutla with 42, Playa Vicente with 38 and Chicontepec with 33.

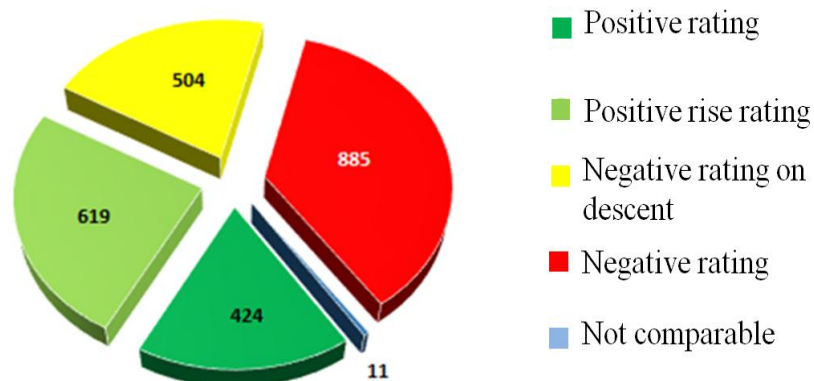
Of the 504 indigenous women who were beneficiaries of the POPMI program, locations were found that showed a deterioration since they were non-poor multidimensional in 2000 and in 2010 presented a multidimensional poor condition. The municipality of Chiconamel stands out, with 62 indigenous women benefiting from POPMI, Tlachichilco, Tehuipango and Hueyapan de Ocampo with 32; And Papantla with 27.

Finally, 885 indigenous women benefited in the POPMI are placed in an unfavorable situation since they presented a condition of poor multidimensional in the year 2000 and in the year 2010. The municipality of Papantla registered 100 beneficiary indigenous women, Soledad Atzompa with 77, Chicontepec with 58, Hueyapan de Ocampo with 53 and Mecatlán with 36.

In order to achieve a comparability between the years 2000 and 2010, 5 levels of qualification of the localities are identified according to their condition of multidimensional poverty: a). With positive qualification, they correspond to those localities that were identified as non-poor multidimensional, both in the year 2000 and in the year 2010; B). With a positive rating on the rise, they correspond to those localities that were identified as multidimensional poor in the year 2000 and as non-poor multidimensional ones in the year 2010; C). With negative qualification in decline, they correspond to those localities that were identified as multidimensional non-poor in the year 2000 and as multidimensional poor in the year 2010; D). With negative qualification, they correspond to those localities that were identified as multidimensional poor both in the year 2000 and in the year 2010; And e). Not comparable, they correspond to those localities that do not have information for comparability between the year 2000 and 2010. Thus, according to the information in Graph 3, the following is observed:

- 885 indigenous women benefited from the POPMI program were located in localities that show a negative condition with respect to their multidimensional poverty, that is, they correspond to localities that were identified as multidimensional poor in the year 2000 and that in 2010 maintained That condition.
- 504 indigenous women benefited were located in localities that show a declining negative condition with respect to their condition of multidimensional poverty, that is to say that they correspond to localities that were identified as non-poor multidimensional in the year 2000 and that in the year 2010 they were identified As multidimensional poor.

Graph 3:- Distribution of indigenous women beneficiaries in the POPMI program according to the locality's qualification regarding their condition of multidimensional poverty in the period 2000-2010.



Source:

/ 1 National Commission for the Development of Indigenous Peoples. Productive Organization Program for Indigenous Women (POPMI). 2010.

/ 2 Medel-Ramírez C. (2016) "Evaluation of the degree of social exclusion and multidimensional poverty in indigenous communities in the State of Veracruz: The case of the program of development of priority areas." Op. Cit.

- 619 indigenous women benefited were located in localities that show a positive condition on the rise with respect to their condition of multidimensional poverty, that is, they correspond to localities that were identified as multidimensional poor in the year 2000 and that in the year were identified as not Poor multidimensional in the year 2010.
- 424 indigenous women benefited were located in localities that show a positive condition with respect to their condition of multidimensional poverty, that is, they correspond to localities that were identified as multidimensional non-poor in both 2000 and 2010.
- And finally, 11 indigenous women benefited were located in localities that do not have information for comparability between 2000 and 2010.

Conclusions:-

The analysis of multidimensional poverty is an important factor in analyzing the distribution of federal public resources applied in the operation of the POPMI program, since it allows the identification of scenarios, based on information from the period 2000 to 2010, since it establishes Strategies for the empowerment of indigenous women, with the following lines of priority attention:

- a. Give attention to the 504 localities that worsened their condition of multidimensional poverty in 2010;
- b. Give priority attention to the 885 localities that present a negative stagnation in their condition of multidimensional poverty.
- c. Strengthen support for the empowerment of indigenous women in 619 localities that improved their condition of multidimensional poverty.
- d. Continue to promote support in the 424 localities that maintain positive stability in their multidimensional poverty situation.

From the obtained results we conclude that:-

1. Locations in the State of Veracruz where indigenous presence and multidimensional poverty and high levels of social exclusion have been excluded in the strategy proposed by the Productive Organization Program for Indigenous Women (POPMI) in the State of Veracruz.
2. The status of indigenous language speaker in localities with high or very high levels of marginalization, as well as high or very high rates of social backwardness are factors that condition a high rate of social exclusion, since the condition of The condition of having a high degree of indigenous presence (% GPLIloc) and having a social backwardness index (RS = high or very high) is a detonating factor to have a high social exclusion rate.
3. The fight against poverty, while recognizing its multidimensional character, examines the degree of social exclusion in localities with a high presence of indigenous language speakers, since the selection criteria in the rules of operation of the POPMI for the transfer of federal public resource applied in PDZP at localities level is exclusive.

4. The current social expenditure policy aimed at seeking the empowerment of productive capacities in the indigenous population; And increasing the capacities of indigenous women, who are placed in unfavorable conditions of both multidimensional poverty and social exclusion, does not solve the problem of social exclusion.

Bibliografía:-

1. Alkire Sabina y Foster James (2007). Recuento y Medición Multidimensional de la Pobreza. Documento de trabajo OPHI No.7. Universidad de Oxford y Universidad Vanderbilt. Diciembre de 2007. Recuperado de: <http://www.ophi.org.uk/wp-content/uploads/ophi-wp7-es.pdf>
2. Appasamy Paul *et al.* (1996). Social exclusion from a welfare rights perspective in India (RS 106). ILO. International Institute for Labour Studies. UNDP. Switzerland. Recuperado de: http://www.ilo.org/public/libdoc/ilo/1996/96B09_501_engl.pdf
3. Barba Solano, C. (2009). “Los estudios de la pobreza en América Latina”. En: Revista Mexicana de Sociología. UNAM. Instituto De Investigaciones Sociales.
4. Barry B. (1998), Social exclusion, social isolation and the distribution of income, CASE, Londres. Recuperado de: <https://core.ac.uk/download/files/67/93935.pdf>
5. Batliwala, Srilata (1997) “El significado del empoderamiento de las mujeres: nuevos conceptos desde la acción”. En: Poder y empoderamiento de las mujeres, Bogotá Colombia. pp. 186-207 Recuperado de: http://www.congresoed.org/wp-content/uploads/2014/10/D4_Batliwala_1997.pdf
6. Boltvinik J. (2013). “Medición multidimensional de la pobreza. AL de precursora a rezagada”. En: Revista Sociedad y Equidad, número 5. pp. 4-29. Recuperado en: <http://www.sye.uchile.cl/index.php/RSE/article/viewArticle/26337/27840>,
7. Cabrera P. (2002). “Cárcel y exclusión”. En: Revista del Ministerio de Trabajo y Asuntos sociales, número 35. pp. 83-120. Recuperado de: <http://libros-revistas-derecho.vlex.es/vid/carcel-exclusion-173520>
8. Castel Robert (1995) “De la exclusión como estado a la vulnerabilidad como proceso”. En: Cuadernos de crítica de la cultura. Archipiélago.
9. Centro de estudios para el adelanto de las mujeres y la equidad de género. Políticas públicas, programas federales y presupuesto dirigidos a mujeres del año 2006 al 2009. Recuperado de: http://www.diputados.gob.mx/documentos/CEAMEG/POLITICAS_CEAMEG.pdf
10. Consejo Nacional de Evaluación de la Política de Desarrollo Social CONEVAL (2015) Medición de la pobreza en México y en las entidades federativas. 2014. Recuperado de: http://www.coneval.gob.mx/Medicion/Documents/Pobreza%202014_CONEVAL_web.pdf
11. Consejo Nacional de Evaluación de la Política de Desarrollo Social CONEVAL (2009). Metodología para la medición multidimensional de la pobreza en México. México D.F. pp. 1-129 Recuperado de: http://www.coneval.gob.mx/rw/resource/Metodologia_Medicion_Multidimensional.pdf
12. Del Popolo Fabiana *et al.* (2009) “Indígenas urbanos en América Latina: algunos resultados censales y su relación con los Objetivos de Desarrollo del Milenio”. En: Notas de población. Año XXXV. N°86 • CEPAL. CELADE-División de Población de la CEPAL - Naciones Unidas. Santiago de Chile. pp 101- 140 Recuperado de: http://www.cepal.org/publicaciones/xml/6/35866/lcg2349-P_5.pdf
13. Donzelot Jacques (ed.) (1992) Face à l'exclusion Le modèle français. Ed. Esprit. Paris. pp. 137-168
14. Estivill J. (2003). *Panorama de lucha contra la exclusión social: conceptos y estrategias*. Oficina Internacional del Trabajo. Ginebra Suiza. pp. 5 – 144. Recuperado de: <http://www.derechoshumanos.unlp.edu.ar/assets/files/documentos/panorama-de-la-lucha-contra-la-exclusion-social.pdf>
15. Friedman, J. (1992), Empowerment. The Politics of Alternative Development, Blackwell Ed., Massachusetts.
16. Hickey Sam y Andries du Toit. (2007). Adverse incorporation, social exclusion and chronic poverty. Institute for Development Policy and Management School of Environment and Development. University of Manchester. Recuperado de: http://www.chronicpoverty.org/uploads/publication_files/WP81_Hickey_duToit.pdf
17. INMUJERES. Programa Organización Productiva para Mujeres Indígenas (POPMI). Recuperado de: <http://padrones.inmujeres.gob.mx/programanio.php?idPrograma=7>
18. Instituto Nacional de Estadística y Geografía INEGI (2010) Censos Generales de Población y Vivienda.
19. Laparra *et al.* (2007). “Una propuesta de consenso sobre el concepto de exclusión. Implicaciones metodológicas.” En: Revista Española del Tercer Sector número 5, pp. 15-57. Recuperado de: <https://documat.unirioja.es/descarga/articulo/2376685.pdf>
20. Martínez Corona B. (2000) Género, empoderamiento y sustentabilidad. Una experiencia de microempresa artesanal de mujeres indígenas, México, Grupo Interdisciplinario sobre Mujeres y Pobreza.

21. Medel-Ramírez C. (2016a). "Evaluación del grado de exclusión social y de pobreza multidimensional en las localidades indígenas en el Estado de Veracruz: El caso del programa de desarrollo de zonas prioritarias." (Tesis doctoral). Facultad de Economía. Doctorado en Finanzas Públicas. Universidad Veracruzana. México.
22. Medel-Ramírez C. (2016b). "Proposed methodology for estimating the rate of social exclusion as a relevant dimension in multidimensional poverty of the indigenous population in the state of Veracruz." Human Development and Capability Association 2016 Conference. Hitotsubashi University in Tokyo, September. 1-3, 2016. <https://hd-ca.org/publications/proposed-methodology-for-estimating-the-rate-of-social-exclusion-as-a-relevant-dimension-in-multidimensional-poverty-of-the-indigenous-population-in-the-state-of-veracruz>
23. Olivares Cuevas P. (2006) "Una mirada desde la perspectiva de género hacia las mujeres rurales de Achichipico Morelos y el proceso de empoderamiento", Tesis de Maestría en Ciencias, México, Universidad Autónoma Chapingo.
24. Pérez Nasser E. (2001) "El proceso de empoderamiento de mujeres indígenas organizadas desde una perspectiva de género", en Estudios Agrarios, núm. 17, pp.125-169.
25. Programa Organización Productiva para Mujeres Indígenas (POPMI) Véase. http://www2.cdi.gob.mx/menu_1.html
26. Renes V. (1993). Luchar contra la pobreza hoy. HOAC. Madrid España.
27. Rionda Ramírez Jorge Isauro. (2010). "Exclusión indígena en México (Historia económica en retrospectiva)". En: Revista electrónica de las ciencias sociales. Tecsitecatl. no. 7. pp. 1-21. Recuperado en: <http://www.eumed.net/rev/tecsitecatl/n7/jirr.pdf>
28. Sen A. (2000). "Social exclusion: Concept, application, an scrutiny". En: Social Development Papers No. 1, pp. 1-54. Manila Phillipines: Asian Development Bank. doi: ISBN 971-561-274-1 Recuperado de: <http://www.adb.org/sites/default/files/publication/29778/social-exclusion.pdf>
29. Sen A. (2003). "Development as Capability Expansion" En: Readings in Human Development. Oxford University Press. pp. 41-54.
30. Sen A. y Kliksberg, B. (2007): Primero la gente. Una mirada desde la ética del desarrollo a los principales problemas del mundo globalizado. Ed. Deusto, España. pp. 27 – 42 Recuperado de: <http://www.fder.edu.uy/contenido/rrll/contenido/licenciatura/ff-2013/sen-kliksberg.pdf>
31. Subirats J. *et al.* (2004). "Pobreza y exclusión social. Un análisis de la realidad española y europea". En: Colección Estudios Sociales. Núm.16. Fundación "laCaixa", Barcelona España. pp. 5 - 182 Recuperado de: <http://www.didacqueralt.com/pobreza-sp.pdf>
32. Tetreault Darcy V. (2012). "La política social y los programas para combatir la pobreza en México ¿Oportunidades para quiénes?" En: Estudios Críticos del Desarrollo Vol. II, no. 2, primer semestre de 2012, pp. 41–74 Recuperado de: <http://estudiosdeldesarrollo.net/critical/rev2/2.pdf>
33. Universidad Autónoma de Chapingo. (2008) Evaluación de Consistencia y Resultados 2007 del Programa Organización Productiva para Mujeres Indígenas (POPMI). Recuperado de: http://www.cdi.gob.mx/programas/evaluaciones/popmi_evaluacion2007.pdf
34. Uquillas J., Carrasco T. y Rees M. (2003). Exclusión social y estrategias de vida de los indígenas urbanos en Perú, México y Ecuador. Quito Ecuador. Banco Mundial. Recuperado de: http://www-wds.worldbank.org/external/default/WDSContentServer/WDSP/IB/2006/04/13/000012009_20060413154451/Rendered/PDF/358410rev0EXCLUSION120SOCIAL1.pdf
35. Vázquez E. *et al.* (2002) "Procesos de empoderamiento entre mujeres productoras en Tabasco", en Revista Mexicana de Sociología, vol. 4, núm. 2, pp. 85-124
36. World Bank (2004) Medición de la pobreza a nivel nacional. Recuperado en: <http://web.worldbank.org/WBSITE/EXTERNAL/TOPICS/EXTPOVERTY/EXTPA/0,,contentMDK:22397595~pagePK:210058~piPK:>
37. Zapata E. *et al.* (2003) Microfinanciamiento y empoderamiento de mujeres rurales, Las cajas de ahorro y crédito en México, México, Plaza y Valdés, Colegio de Postgraduados y Programa Nacional de Financiamiento al Microempresario.
38. ACUERDO de Modificación a las Reglas de Operación del Programa Organización Productiva para Mujeres Indígenas (POPMI) a cargo de la Coordinación General de Fomento al Desarrollo Indígena para el ejercicio fiscal 2013.). Recuperado de: http://www2.cdi.gob.mx/popmi_reglas_de_operacion_2013.pdf