

Comparison between chaotropic and detergent-based sample preparation workflow in tendon for mass spectrometry analysis

Yalda A. Kharaz^{1*}, Danae Zamboulis^{1*}, Karen Sander¹, Eithne Comerford¹, Peter Clegg^{1,2}, Mandy Peffers^{1,2},

¹Department of Musculoskeletal Biology, Institute of Ageing and Chronic Disease, University of Liverpool, William Duncan Building

²The MRC-Arthritis Research UK Centre for Integrated research into Musculoskeletal Ageing (CIMA)

**These authors contributed equally to this work*

*Correspondence to: Yalda Ashraf Kharaz

Tel: 0151 7956100 Email: Y.Ashraf-Kharaz@liverpool.ac.uk

Total word count = 5258

Key Words: tendon, proteomics, RapiGest™, Urea, Guanidine-HCl

Abbreviations: Ambic: Ammonium bicarbonate, ECM: Extracellular matrix, HCD: High energy collisional dissociation, LC-MS/MS: Liquid chromatography tandem mass spectrometry, SDFT:

Received: 01 13, 2017; Revised: 05 16, 2017; Accepted: 05 19, 2017

This article has been accepted for publication and undergone full peer review but has not been through the copyediting, typesetting, pagination and proofreading process, which may lead to differences between this version and the [Version of Record](#). Please cite this article as [doi: 10.1002/pmic.201700018](https://doi.org/10.1002/pmic.201700018).

This article is protected by copyright. All rights reserved.

superficial digital flexor tendon, LF: Label-free, GnHCl: Guanidine hydrochloride, PANTHER: protein analysis through evolutionary Relationships.

Abstract (200 words)

Exploring the tendon proteome is a challenging but important task for understanding the mechanisms of physiological/pathological processes during ageing and disease and for the development of new treatments. Several extraction methods have been utilised for tendon mass spectrometry, however different extraction methods have not been simultaneously compared. In the present study we compared protein extraction in tendon with two chaotropic agents, guanidine hydrochloride (GnHCl) and urea, a detergent, RapiGest™, and their combinations for shotgun mass spectrometry.

An initial proteomic analysis was performed following urea, GnHCl, and RapiGest™ extraction of equine superficial digital flexor tendon (SDFT) tissue. Subsequently, another proteomic analysis was performed following extraction with GnHCl, Rapigest™, and their combinations. Between the two chaotropic agents, GnHCl extracted more proteins, whilst a greater number of proteins were solely identified after Rapigest™ extraction. Protein extraction with a combination of GnHCl followed by RapiGest™ on the insoluble pellet demonstrated, after label-free quantification, increased abundance of identified collagen proteins and low sample to sample variability. In contrast, GnHCl extraction on its own showed increased abundance of identified proteoglycans and cellular proteins. Therefore, the selection of protein extraction method for tendon tissue for mass spectrometry analysis should reflect the focus of the study.

Significance of the study

The ability to produce robust and effective methodologies in mass spectrometry-based proteomic sample preparation will be invaluable for future studies in tendon enabling its comprehensive proteomic characterisation and helping to identify potential target areas for diagnostics/therapeutic purposes. In this study, we determine the first comparison between chaotropic- and detergent-based work-flows for tendon sample preparation for mass spectrometry analysis.

1 1 Introduction

Tendons are dense connective tissues that perform key roles in the musculoskeletal system. They serve primarily to transfer the pull of muscles to bone [1] but also engage in locomotion by transferring the forces generated by the muscles to the skeleton [2]. Injuries to tendons are common in humans as well as other species such as the horse [3, 4]. More than 30 million tendon injuries per year are reported worldwide in humans [5] and represents a major health care burden [6]. Among tendons, the rotator cuff, Achilles, and patellar tendons are the most commonly affected in humans [7], whilst in the horse the superficial digital flexor tendon (SDFT) is most commonly injured [4]. Risk factors such as repetitive loading [8], chronic inflammation [9], genetic factors [10], and ageing [11] have been demonstrated to play a role in tendon injury in both humans and the horse.

Mass spectrometry (MS) analysis is becoming an attractive tool for tendon proteomic profile characterisation, with studies outlining the differences in disease [9], with ageing [11], at different anatomical compartment [12], as well as differences between tendon and ligament and tissues engineered tissues [13]. However, a robust and reproducible protein extraction method specific for

tendon tissue is lacking. The use of proteomic techniques will allow tendon protein profiles and patterns to be defined under different conditions to obtain a clearer insight into tendon composition, which will have an impact for cell based therapies and tissue engineering strategies in tendon disease.

Tendons are composed of water, a small population of cells (predominately tenocytes) and extracellular matrix (ECM) consisting predominately of collagens (I, III, V, VI, XII, XIV) [8, 14], proteoglycans [15], glycoproteins [14], and elastin [16]. Tendon protein extraction can be challenging due to its collagen-rich composition

which exhibits high intermolecular cross-linking [17] that accumulates with ageing and therefore makes it resistant to extraction [11]. Chaotropic agents [11, 13], surfactants [12, 18, 19], and other agents such as cyanogen bromide and proteases [20] have been used for tendon protein extraction for MS analysis. However, to date no study has compared different extraction methods for tendon.

Guanidine-HCl (GnHCl) is one of the most efficient chaotropic agents [21] and has been used for protein extraction in ECM-rich tissues such as bone [22, 23], cartilage [24, 25], ligament and tendon [13, 20, 26]. Urea is another chaotropic agent that has been widely used and is efficient for cell and tissue lysis [27-29]. Chaotropic agents exert their function by extracting non-covalently bound ECM and cellular proteins leaving behind an insoluble fraction [11, 13, 25]. Another extraction technique that has recently been used in tendon proteomic studies is the surfactant RapiGest™ (Waters) [12, 18], which was shown to increase protein identification [25, 30].

The aim of this study was 1) to compare differences between two different chaotropic agents and a detergent based work-flow for label-free (LF) MS-based analysis in tendon and 2) to identify

whether combining a chaotropic agent and a detergent for protein extraction could increase the protein coverage in tendon.

2 2 Material and Methods

All chemicals were supplied by Sigma–Aldrich, Dorset, UK unless otherwise stated.

2.1 Tissue collection and preparation

Forelimbs, distal to the carpus, were collected from middle-aged horses (n=3, aged 12.3 ± 1.15, mean ± SD) from a commercial equine abattoir. Ethical approval is not required for samples collected as by-products of the agricultural industry according to the Animal (Scientific Procedures) Act 1986, Schedule 2. SDFTs were collected and a 2 cm sample was dissected from the mid-metacarpal region. Only tendons that had no evidence of previous tendon injury at post-mortem examination were included in the study. All samples were snap-frozen in liquid nitrogen and stored at -80°C until required.

Samples for protein extraction were homogenised using a dismembrator (B.Braun Biotech. International, Germany), split into three or four aliquots of approximately 20 mg and deglycolysated with 1 U/ml chondroitinase ABC for six hours at 37°C [13] prior to protein extraction.

2.2 Comparison between GnHCl, urea and RapiGest™ extraction

2.2.1 GnHCl protein extraction

0.5 mL of GnHCl extraction buffer (4 M GnHCl, 65 mM dithiothreitol (DTT), 50 mM sodium acetate and protease inhibitors (complete Protease Inhibitors, EDTA-free, Roche Applied Science) was added to the samples. Each sample was then sonicated on ice (3 cycles of 10s each at 40% output) on an ultrasonic processor followed by incubation at 4°C on a shaker for 48 hours. After centrifugation at

15,000 rpm at 4°C for 15 minutes, the supernatant (soluble fraction) was collected and stored at -20°C until further analysis.

2.2.2 Urea protein extraction

0.5 mL of urea extraction buffer (7 M Urea, 0.15 M Sodium Chloride, 50 mM tris hydrochloride and protease inhibitors, pH 6.5) was added to each sample followed by sonication, centrifugation, and supernatant collection as described in Section 2.2.1.

2.2.3 RapiGest™ protein extraction

250 µL 50 mM ammonium bicarbonate (Ambic) was added to each sample before sonication (Section 2.2.1). The samples were then topped up with 250 µL 0.2% RapiGest™ in 50 mM Ambic and heated at 80°C for 10 minutes. A second heating step at 60°C for one hour was performed after the samples were left to cool down at room temperature for 10 minutes. Following the second heating step, the samples were spun down at maximum speed for 10 minutes and the supernatant was collected. The remaining pellet was topped up with 20 µL RapiGest™ (0.1%, in 50 mM Ambic) and heated at 60°C for 10 minutes before centrifugation at maximum speed for 10 minutes. The supernatant was collected and added to the previously collected supernatant (soluble fraction).

2.3 Comparison between GnHCl and RapiGest™ extraction and their combinations

A schematic representation of the experimental workflow for the comparison of GnHCl and RapiGest extraction methods and their combinations is presented in Figure 1B.

2.4.1 GnHCl and Rapigest combined protein extraction

450 µL GnHCl and RapiGest™ extraction buffer (0.1% RapiGest™ in guanidine extraction buffer) was added to each sample before sonication (Section 2.2.1). The samples were then incubated on a

shaker for 48 hours at 4°C followed by heating at 80°C for 10 minutes. A second heating step at 60°C for one hour was performed after the samples were left to cool down at room temperature for 10 minutes. Following the second heating step, the samples were spun down at maximum speed for 10 minutes at room temperature, and the supernatant was collected. The remaining pellet was topped up with 20 µL RapiGest™ (0.1%, in 50 mM Ambic), heated at 60°C for 10 minutes, centrifuged, and the supernatant collected as described in Section 2.2.3.

2.4.2 *GnHCl extraction followed by RapiGest™ extraction on the insoluble pellet*

250 µL GnHCl extraction buffer was added to each sample before sonication (Section 2.2). The samples were then incubated on a shaker for 48 h at 4°C, centrifuged and the soluble fraction collected (Section 2.2.1). Subsequently, the remaining pellet was washed three times with 100 µL 50 mM Ambic. The supernatant from the first wash was collected and added to the soluble fraction (additional washes were discarded). 250 µL 0.2% RapiGest™ was added to the insoluble pellet and the RapiGest™ extraction steps undertaken as described in Section 2.2.3.

The same protocol was used when comparing different concentrations of RapiGest™ (0.1%, 0.2% and 0.4%) following GnHCl extraction.

2.7 *In-solution trypsin digestion and LC-MS/MS*

Prior to trypsin digestion the protein concentration of each soluble fraction was calculated using the Pierce™ 660 nm protein assay and samples were analysed by 1D-SDS-PAGE gel electrophoresis to assess gross qualitative differences in protein profiles. In-solution tryptic digest was carried out on 10 µl of strataclean™ resins (Agilent Genomics, UK) on 100 µg protein for each sample. Prior to digest Strataclean beads were washed 3x of 25mM ambic. In-solution tryptic digestion of protein samples was carried out following sequential reduction and alkylation in 3 mM DTT (60 °C for 10

min) and then 9 mM iodoacetamide (30 min in the dark at room temperature) with trypsin at a ratio of 1:25 protein: trypsin ratio overnight at 37 °C. Detergent inactivation was then assumed by incubating for 45 min at 37 °C with trifluoroacetic acid (VWR International, UK) to a final concentration of 0.5% (v/v). Following centrifugation (10 min, 15,000 × g) the soluble phase was retrieved [31]. LC-MS/MS was performed using an Ultimate 3000 nano system (Dionex/Thermo Fischer) coupled online to a Q-Exactive Quadrupole-Orbitrap mass spectrometer. 50 ng tryptic peptides from randomised samples was loaded onto the column on a one hour gradient with an inter-sample 30 minutes blank [26].

2.8 Proteomic data analysis

MS data were analysed for protein identification using PEAKS (version, 7, Bioinformatics Solution, Waterloo, Canada) and label-free (LF) quantification was performed with Progenesis^{QI} LC-MS (Waters, Elstree Hertfordshire, UK) software [26]. The MS data has been deposited in PRIDE database (<http://www.ebi.ac.uk/pride/>) at the European Bioinformatics Institute under the accession number PXD004453.

2.8.1 Protein identification

Raw MS/MS files were imported into PEAKS studio 7 (Bioinformatics solution, 7, Waterloo, Canada) and searched against the UniHorse database (<http://www.uniprot.org/proteomes/>). Search parameters used were: 10 ppm peptide mass tolerance and 0.01 Da fragment mass tolerance; precursor mass search type, monoisotopic; enzyme, trypsin; max missed cleavage, 1; nonspecific cleavage, 1; fixed modification; carbamidomethylation; variable modifications, methionine oxidation and hydroxylation; variable PTMs per peptide, 3. Search results were adjusted to 1% FDR at peptide spectrum matches, $-10 \lg p > 20$, unique peptides ≥ 2 , and confidence score $\geq 50\%$.

2.8.3 GO and protein network analysis

Identified proteins for each extraction method and were classified into ECM categories according to Matrisome Project [32] and for cellular compartments according through PANTHER (protein analysis through evolutionary relationships) [33].

2.8.2 LF quantification

LF quantitative analysis between different extraction methods was performed using Progenesis^{qi} LC-MS as previously described [26]. Briefly, the top 5 spectra for each feature were exported from Progenesis^{qi} and utilized for peptide identification with a PEAKS studio 7 searching against the UniHorse database. Search parameters used were as described in Section 2.8.1 and were re-imported into Progenesis^{qi}. Differentially abundant proteins ($p < 0.05$, fold change > 2) in each group were categorised through PANTHER Classification System.

2.8.3 Statistical analysis

Statistical analysis was performed on protein concentration measurements using one-way analysis of variance (ANOVA) with Bonferroni post-hoc test using Graphpad Prism (version 6, Graphpad Software, La Jolla California, USA). Statistical analysis for LF quantification was performed by Progenesis^{qi} software on all detected features using transformed normalized abundance for ANOVA. Identified proteins with two or more peptides, greater than 2 fold abundance and with a p -value adjusted to FDR $p < 0.05$ were considered as significantly differentially abundant.

3 3 Results

3.1 A higher number of proteins were identified with GnHCl in comparison to Urea and RapiGest™ extraction methods

A total of 249, 186 and 123 proteins were identified with GnHCl, Urea, and RapiGest™ extraction methods respectively. Between all three extraction methods 62 proteins were found to be common (Figure 1A). Chaotropic agents identified 139 proteins in common, but a higher number of total and unique proteins were identified in GnHCl compared to Urea (Figure 1A). RapiGest™ extraction gave less common identified proteins with GnHCl (74) and with urea (67), whilst having more unique proteins than urea (Figure 1A). Based on these results, a combination of GnHCl and RapiGest™ was investigated (Figure 1B). All identified proteins in the three methods are provided in Supplementary Table 1.

3.2 Improved extraction efficiency and less disparity was found with the extraction method of GnHCl followed by RapiGest™ on the insoluble pellet

1D SDS-PAGE analysis of GnHCl and RapiGest™ extraction and their combinations displayed variability in protein profiles with the RapiGest™ extraction showing an absence of high molecular proteins compared to the other methods (Figure 2A). GnHCl followed by RapiGest™ extraction yielded a higher protein concentration (13.9 ± 1.2 µg/mg weight) with the least variability between the samples in comparison to the other three extraction methods (Figure 2B). A total number of 229, 112, 138, and 203 proteins were identified for GnHCl, RapiGest™, GnHCl and RapiGest™ and GnHCl followed by RapiGest™ respectively (Figure 2C). The GnHCl followed by RapiGest™ method gave the most identified unique proteins whilst RapiGest™ had the least (Figure 2C). Protein composition with GnHCl and GnHCl followed by RapiGest™ extracts revealed a similar percentage of cell associated proteins (49%) which was higher than for the other two methods. Following RapiGest™ extraction, a higher percentage of proteins (39%) associated to the matrisome was identified being

predominantly core matrisomal collagens (Figure 2D). All identified proteins in the four methods are provided in Supplementary Table 2.

The Progenesis^{Qi} quality control report demonstrated less inter-sample variability in percentage of peptide ions and number of peptides and proteins for the GnHCl followed by RapiGestTM extraction method (Figure 3A-C). This finding was supported by the protein PCA plot which demonstrated that samples from the GnHCl followed by RapiGestTM extraction method were grouped closer together (Figure 3D). LF analysis demonstrated a set of 170 proteins within the four extraction methods with a fold change > 2, unique peptides \geq 2, and FDR adjusted $p < 0.05$. From the proteins that were most abundant in the GnHCl extract, 65% were cellular and intracellular associated, with the remaining 28% and 6% identified as ECM and membrane bound proteins respectively (Figure 3E). In contrast, from the proteins that were most abundant after RapiGestTM extraction, a considerably higher percentage were ECM associated proteins (78%) and a smaller percentage were cell associated proteins (22%) (Figure 3F). Of the most abundant proteins in GnHCl and RapiGestTM extraction, 65% and 35% were ECM and cellular associated proteins respectively (Figure 3G). The most abundant proteins in the GnHCl followed by RapiGestTM extract were classified as 44% ECM associated, 44% cellular associated and the remaining 12% were membrane associated proteins (Figure 3H).

3.3 Quantitative differences in protein composition were observed between the GnHCl and GnHCl followed by RapiGest extraction methods

Subsequent relative protein abundance between GnHCl and GnHCl followed by RapiGestTM was assessed by LF quantitative analysis. There were 35 differentially abundant proteins identified with 2 or more peptides, a p -value < 0.05, and more than a 2-fold change (Figure 4A). Collagens, such as collagen type I alpha 2 chain, collagen type II alpha 1 chain and collagen type V alpha 1, were most abundantly found in the GnHCl followed by RapiGestTM extraction (Table 1). On the other hand,

proteoglycans, such as fibromodulin and lumican, were most abundantly found after GnHCl extraction (Table 1). Several cellular proteins, such as actin 1 and 4, talin 1, and tubulin alpha 4A, were also found to be more abundant after GnHCl extraction. Following GnHCl extraction, the collagenous proteins and the proteoglycans abundance represented 49% and 20% respectively of the overall identified proteins abundance. Whereas GnHCl followed by RapiGest™ extraction resulted in 80% and 4% abundance of collagens and proteoglycans respectively (Supplementary Table 3).

The addition of RapiGest™ at variable concentrations (0.1%, 0.2% and 0.4%) following GnHCl extraction demonstrated no differences on 1D SDS-PAGE analysis between the three concentrations indicating the use of 0.1% RapiGest™ on the insoluble pellet is sufficient (Figure 4B).

4 4 Discussion

This is the first study to compare different protein extraction methods in tendon for shotgun MS. The experimental design involved a proteomics comparison between GnHCl, urea, and RapiGest™ extractions and a further comparison between GnHCl and RapiGest™ and their combinations.

Both GnHCl and urea are chaotropic agents implying that they disrupt the non-covalent bonds within the proteins tertiary structure. In this study, we found GnHCl extraction increased the number of proteins identified compared to urea. The higher number of intracellular proteins extracted with GnHCl indicates that this agent is able to disrupt cellular membranes in a more efficient manner, which is consistent with other studies findings, whereas GnHCl was thought to disrupt the cell membrane causing permeabilisation [34, 35]. In tendon, the relatively poorer protein identification by urea could possibly be due to its lower ability to solubilise the lipid bilayer of membranes which could lead to reduced release of cell contents and fewer less abundant proteins.

The surfactant RapiGest™ was chosen for the detergent-based extraction method, as it does not suppress peptide ionisation or modify peptides and proteins making it compatible with MS [36] also offering a simple extraction method for tendon tissue. In this study, when compared to GnHCl and urea, RapiGest™ gave less overall protein identifications but had fewer proteins in common with the chaotropic agents suggesting extraction of different proteins. RapiGest™ has been shown to improve ECM MS protein coverage by its addition to the trypsin digestion solution and protein extraction efficiency in cartilage [25, 37]. Based on the above findings, combinations of GnHCl and RapiGest™ extraction were further investigated in the current study.

Overall, GnHCl and GnHCl followed by RapiGest™ demonstrated a more robust extraction of tendon by yielding a higher protein concentration, more protein identifications and a good representation of cell and membrane associated proteins. In addition, GnHCl followed by RapiGest™ demonstrated the least inter-sample variation in terms of protein concentration and in peptide and protein identification and quantification, suggesting this method to be the most consistent.

Furthermore, the addition of RapiGest™ to GnHCl extraction and RapiGest™ alone resulted in an increased abundance of identified collagens compared to GnHCl alone. Following GnHCl extraction, the proteoglycans abundance represented 20% of the overall identified protein abundance, whilst with GnHCl followed by RapiGest™ extraction it was only 4% and 80% were collagens compared to only 49% collagen proteins in GnHCl extraction. Since tendon ECM composition consists of 60-85% collagens and 1-5% proteoglycans (per dry weight tissue), GnHCl followed by RapiGest™ extraction most closely reflected the expected tendon ECM composition [38]. These results thus demonstrate the advantages of combining the surfactant RapiGest™ to GnHCl extraction. However, for studies specifically looking at proteoglycans or less abundant proteins in tendon, GnHCl extraction may be more advantageous. Also for studies that are trying to achieve to complete tendon proteome

identification, separate MS analysis of successive fractions of GnHCl followed by RapiGest™ method could provide more identifications. In addition, the tendon has different anatomical compartments with distinct proteome composition [12] and studies looking at a specific compartment such as the interfascicular matrix [12] might benefit from one method over the other.

In our study, elastin was not identified following any of the extraction methods used. This may be due to elastin being highly cross-linked, hydrophobic [39] and containing repetitive sequences [40]. In order to identify elastin, other mass spectrometry studies have used cyanogen bromide extraction [41] and elastase digestion [20, 40] or 2D separation techniques which could be applied in future studies.

In conclusion, we have shown for the first time a comparison between different extraction methods for MS analysis in tendon tissue. Whilst GnHCl followed by RapiGest™ extraction may be appropriate for extraction and identification of collagenous proteins, GnHCl extraction may be more appropriate for extraction and identification of cellular proteins and proteoglycans in tendon tissue. Therefore, the optimal extraction method should be based on the hypothesis and study design. Our findings make a significant contribution in the field of tendon proteomics and will be invaluable for future studies in tendon research, and could benefit in the diagnosis and therapeutics of tendon disease.

5 5 Acknowledgement

Mandy Peffers is funded through a Wellcome Trust Intermediate Clinical Fellowship (107471/Z/15/Z). Danae Zamboulis is supported by a project grant from the Horserace Betting Levy Board (PRJ/776). Yalda Ashraf Kharaz is supported by the University of Liverpool Institute of Ageing and Chronic Disease. We thank the Medical Research Council (MRC) and Arthritis Research UK as

This article is protected by copyright. All rights reserved.

part of the MRC-Arthritis Research UK Centre for Integrated research into Musculoskeletal Ageing (CIMA) for funding.

The authors have declared no conflict of interest.

6 6 References

- [1] Benjamin, M., Ralphs, J. R., Fibrocartilage in tendons and ligaments—an adaptation to compressive load. *J Anat* 1998, *193*, 481-494.
- [2] Screen, H. R. C., Hierarchical approaches to understanding tendon mechanics. *Journal of Biomechanical Science and Engineering* 2009, *4*, 481-499.
- [3] Clegg, P., Musculoskeletal disease and injury, now and in the future. Part 2: Tendon and ligament injuries. *Equine veterinary journal* 2012, *44*, 371-375.
- [4] Thorpe, C., Clegg, P., Birch, H., A review of tendon injury: why is the equine superficial digital flexor tendon most at risk? *Equine veterinary journal* 2010, *42*, 174-180.
- [5] Maffulli, N., Wong, J., Almekinders, L. C., Types and epidemiology of tendinopathy. *Clinics in sports medicine* 2003, *22*, 675-692.
- [6] Birch, H. L., Thorpe, C. T., Rumian, A. P., Specialisation of extracellular matrix for function in tendons and ligaments. *Muscles Ligaments Tendons J* 2013, *3*, 12-22.
- [7] Moshiri, A., Oryan, A., Tendon and ligament tissue engineering, healing and regenerative medicine. *J Sports Med Doping Stud* 2013, *3*, 2161-0673.1000126.

- [8] Riley, G., Tendinopathy--from basic science to treatment. *Nature clinical practice. Rheumatology* 2008, 4, 82-89.
- [9] Dakin, S. G., Dudhia, J., Smith, R. K., Resolving an inflammatory concept: the importance of inflammation and resolution in tendinopathy. *Veterinary immunology and immunopathology* 2014, 158, 121-127.
- [10] Tully, L., Murphy, A., Smith, R., Hulin-Curtis, S., *et al.*, Polymorphisms in TNC and COL5A1 genes are associated with risk of superficial digital flexor tendinopathy in National Hunt Thoroughbred racehorses. *Equine veterinary journal* 2014, 46, 289-293.
- [11] Peffers, M. J., Thorpe, C. T., Collins, J. A., Eong, R., *et al.*, Proteomic analysis reveals age-related changes in tendon matrix composition, with age-and 1 injury-specific matrix fragmentation. *Journal of Biological Chemistry* 2014, jbc. M114. 566554.
- [12] Thorpe, C. T., Peffers, M. J., Simpson, D., Halliwell, E., *et al.*, Anatomical heterogeneity of tendon: Fascicular and interfascicular tendon compartments have distinct proteomic composition. *Scientific reports* 2016, 6.
- [13] Kharaz, Y. A., Tew, S. R., Peffers, M., Canty-Laird, E. G., Comerford, E., Proteomic differences between native and tissue-engineered tendon and ligament. *Proteomics* 2016, 16, 1547-1556.
- [14] Thorpe, C. T., Birch, H. L., Clegg, P. D., Screen, H. R., The role of the non-collagenous matrix in tendon function. *Int J Exp Pathol* 2013, 94, 248-259.
- [15] Yoon, J. H., Halper, J., Tendon proteoglycans: biochemistry and function. *J Musculoskelet Neuronal Interact* 2005, 5, 22-34.

- [16] Grant, T. M., Thompson, M. S., Urban, J., Yu, J., Elastic fibres are broadly distributed in tendon and highly localized around tenocytes. *Journal of anatomy* 2013, 222, 573-579.
- [17] Bailey, A. J., Paul, R. G., Knott, L., Mechanisms of maturation and ageing of collagen. *Mechanisms of ageing and development* 1998, 106, 1-56.
- [18] Little, D., Thompson, J. W., Dubois, L. G., Ruch, D. S., *et al.*, Proteomic Differences between Male and Female Anterior Cruciate Ligament and Patellar Tendon. *PloS one* 2014, 9, e96526.
- [19] Peffers, M. J., Collins, J., Loughlin, J., Proctor, C., Clegg, P. D., A proteomic analysis of chondrogenic, osteogenic and tenogenic constructs from ageing mesenchymal stem cells. *Stem cell research & therapy* 2016, 7, 133.
- [20] Sato, N., Taniguchi, T., Goda, Y., Kosaka, H., *et al.*, Proteomic Analysis of Human Tendon and Ligament: Solubilization and Analysis of Insoluble Extracellular Matrix in Connective Tissues. *Journal of Proteome Research* 2016.
- [21] Poulsen, J. W., Madsen, C. T., Young, C., Poulsen, F. M., Nielsen, M. L., Using guanidine-hydrochloride for fast and efficient protein digestion and single-step affinity-purification mass spectrometry. *Journal of proteome research* 2012, 12, 1020-1030.
- [22] Jiang, X., Ye, M., Jiang, X., Liu, G., *et al.*, Method development of efficient protein extraction in bone tissue for proteome analysis. *Journal of proteome research* 2007, 6, 2287-2294.
- [23] Cleland, T. P., Voegelé, K., Schweitzer, M. H., Empirical evaluation of bone extraction protocols. *PloS one* 2012, 7, e31443.

- [24] Wilson, R., Diseberg, A. F., Gordon, L., Zivkovic, S., *et al.*, Comprehensive profiling of cartilage extracellular matrix formation and maturation using sequential extraction and label-free quantitative proteomics. *Molecular & Cellular Proteomics* 2010, 9, 1296-1313.
- [25] Hsueh, M.-F., Khabut, A., Kjellström, S., Önnarfjord, P., Kraus, V. B., Elucidating the Molecular Composition of Cartilage by Proteomics. *Journal of proteome research* 2015.
- [26] Peffers, M. J., Thorpe, C. T., Collins, J. A., Eong, R., *et al.*, Proteomic analysis reveals age-related changes in tendon matrix composition, with age-and injury-specific matrix fragmentation. *Journal of Biological Chemistry* 2014, 289, 25867-25878.
- [27] Ngoka, L. C., Sample prep for proteomics of breast cancer: proteomics and gene ontology reveal dramatic differences in protein solubilization preferences of radioimmunoprecipitation assay and urea lysis buffers. *Proteome science* 2008, 6, 1.
- [28] Monera, O. D., Kay, C. M., Hodges, R. S., Protein denaturation with guanidine hydrochloride or urea provides a different estimate of stability depending on the contributions of electrostatic interactions. *Protein Science* 1994, 3, 1984-1991.
- [29] Su, Z., Dias, C. L., Molecular interactions accounting for protein denaturation by urea. *Journal of Molecular Liquids* 2016.
- [30] Tanca, A., Biosa, G., Pagnozzi, D., Addis, M. F., Uzzau, S., Comparison of detergent-based sample preparation workflows for LTQ-Orbitrap analysis of the Escherichia coli proteome. *Proteomics* 2013, 13, 2597-2607.
- [31] Peffers, M. J., Beynon, R. J., Clegg, P. D., Absolute quantification of selected proteins in the human osteoarthritic secretome. *International journal of molecular sciences* 2013, 14, 20658-20681.

- [32] Hynes, R. O., Naba, A., Overview of the matrisome—an inventory of extracellular matrix constituents and functions. *Cold Spring Harbor perspectives in biology* 2012, 4, a004903.
- [33] Mi, H., Muruganujan, A., Casagrande, J. T., Thomas, P. D., Large-scale gene function analysis with the PANTHER classification system. *Nature protocols* 2013, 8, 1551-1566.
- [34] Naglak, T. J., Wang, H. Y., Recovery of a foreign protein from the periplasm of Escherichia coli by chemical permeabilization. *Enzyme and microbial technology* 1990, 12, 603-611.
- [35] Pace, C. N., Laurents, D. V., Thomson, J. A., pH dependence of the urea and guanidine hydrochloride denaturation of ribonuclease A and ribonuclease T1. *Biochemistry* 1990, 29, 2564-2572.
- [36] Yu, Y.-Q., Gilar, M., Lee, P. J., Bouvier, E. S., Gebler, J. C., Enzyme-friendly, mass spectrometry-compatible surfactant for in-solution enzymatic digestion of proteins. *Analytical chemistry* 2003, 75, 6023-6028.
- [37] Hansen, K. C., Kiemle, L., Maller, O., O'Brien, J., *et al.*, An in-solution ultrasonication-assisted digestion method for improved extracellular matrix proteome coverage. *Molecular & Cellular Proteomics* 2009, 8, 1648-1657.
- [38] Thorpe, C. T., Screen, H. R., *Metabolic Influences on Risk for Tendon Disorders*, Springer 2016, pp. 3-10.
- [39] Bailey, A. J., Molecular mechanisms of ageing in connective tissues. *Mechanisms of ageing and development* 2001, 122, 735-755.

[40] Heinz, A., Schröder, C. U., Baud, S., Keeley, F. W., *et al.*, Molecular-level characterization of elastin-like constructs and human aortic elastin. *Matrix Biology* 2014, 38, 12-21.

[41] Schmelzer, C. E., Jung, M. C., Wohlrab, J., Neubert, R. H., Heinz, A., Does human leukocyte elastase degrade intact skin elastin? *FEBS Journal* 2012, 279, 4191-4200.

Table 1. A select number of significantly differentially abundant ECM proteins identified between GnHCl and GnHCl followed by RapiGest extraction by Progenesis^{Qi} LC-MS software (>2-fold change, $p < 0.05$, ≥ 2 peptides).

Higest mean condition	Accession	Description	Peptide count	Max fold change	ANOVA (p)
GnHCl	F6PVJ6	Osteoglycin	8	5.8	0.008
	A2Q126	Fibromodulin	6	4.03	0.0004
	F6SKT2	Lumican	11	5.4	0.0002
	O46542	Decorin	19	2.73	0.0007
	O46403	Biglycan	16	2.08	0.004
	F6YR34	Thrombospondin 1	14	4.50	0.0015

GnHCI followed by RapiGest	F6RTH9	Collagen type I alpha 2	126	10.67	1.58E-05
	F6R4Y3	Collagen type I alpha 1	134	2.51	0.004
	F6XIM5	Collagen type II alpha 1	31	2.67	0.0002
	F6R4Y3	Collagen type III alpha 1	105	3.03	0.004
	F6VVM5	Collagen type IV alpha 1	5	5.46	4.64E-05
	F6Q0M8	Collagen type IV alpha 2	6	2.68	0.002
	F6PLH0	Collagen type V alpha 1	21	6.77	0.002
	F7BH47	Collagen type V alpha 2	30	6.67	0.0004
	F6XKF5	Collagen type V alpha 3	6	2.673	0.0005
	F6XHX	Collagen type XVIII alpha 1	3	6.71	0.002

Figure legends

Figure 1. (A) Venn diagram of GnHCl, urea, and RapiGest™ extraction methods. Total number, common, and unique proteins identified following MS. All identified proteins in each method are can be found in Supplementary Table 1. (B) Schematic workflow of follow up experiment using the chaotropic agent GnHCl, the surfactant RapiGest™, a combination of GnHCl and RapiGest™, and a combination of GnHCl followed by RapiGest™ extraction on the insoluble pellet.

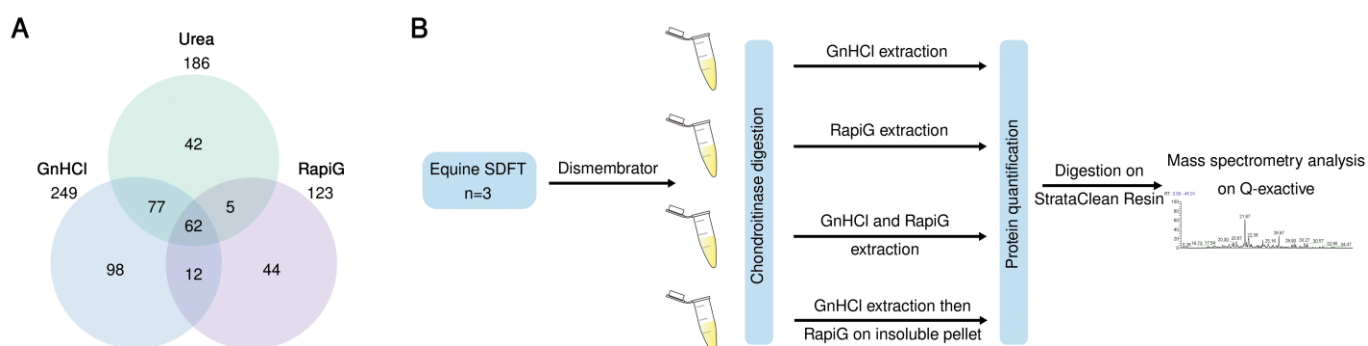
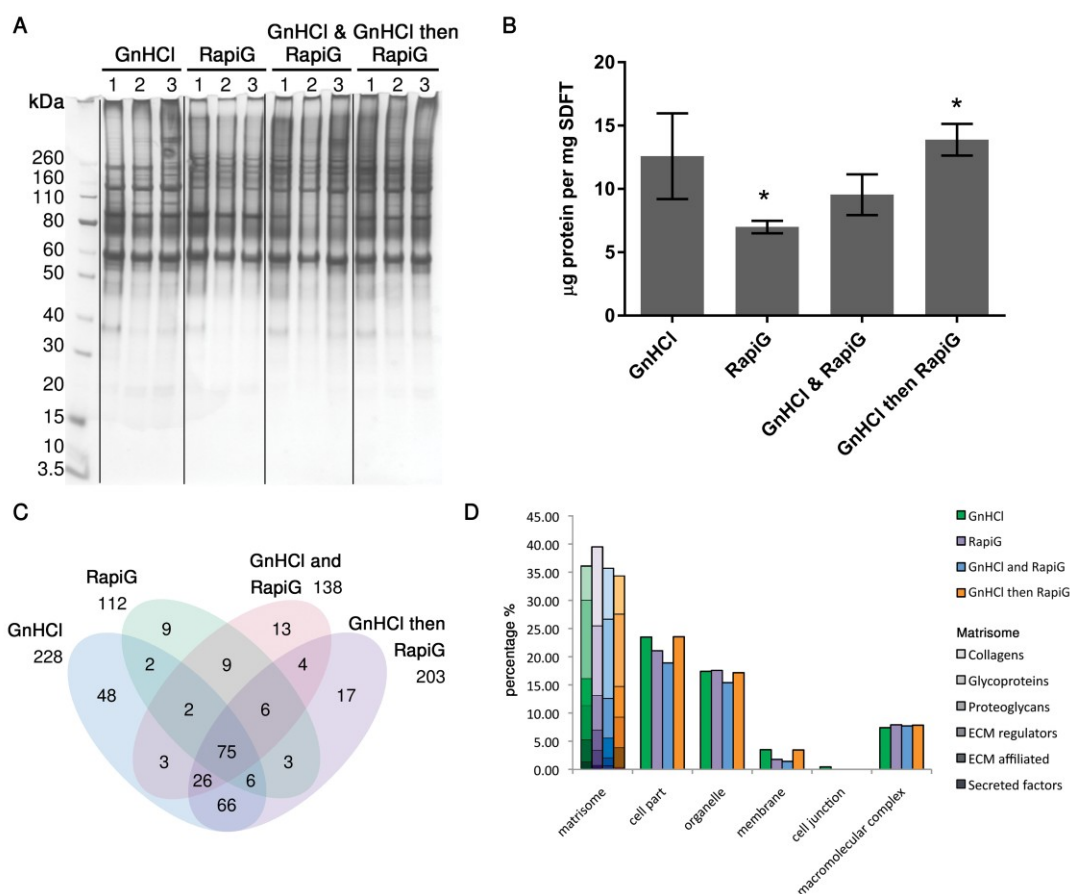


Figure 2. (A) 1D SDS-PAGE analysis of the protein profiles of GnHCl, RapiGest™, GnHCl and RapiGest™, and GnHCl followed by RapiGest™ extraction methods. (B) Protein concentration yielded with the different extraction methods. Values are mean and error bars represent SD, * $p < 0.05$. (C) Venn diagram of the different extraction methods. (D) Classification of identified proteins for each extraction according to cell compartment (PANTHER) and matrisome classification (Matrisome Project). All identified proteins in each method can be found in Supplementary Table 2.



This article is protected by copyright. All rights reserved.

Figure 3. (A-C) Quality control and label free quantitative analysis comparison between GnHCl, RapiGest™, GnHCl and RapiGest™, and GnHCl followed by RapiGest™ using Progenesis^{QI} software. The variation in percentage of all peptide ions (A), number of peptides (B) and proteins (C) was presented for each extraction method. (D) PCA plot of all methods, GnHCl followed by RapiGest™ samples grouped closer together. (E-H) Significantly abundant proteins (fold change > 2 and $p < 0.05$) identified in GnHCl (E), RapiGest (F), GnHCl and RapiGest™ (G), and GnHCl followed by RapiGest™ (H) extraction. Abundant proteins in each group were categorised using PANTHER classification.

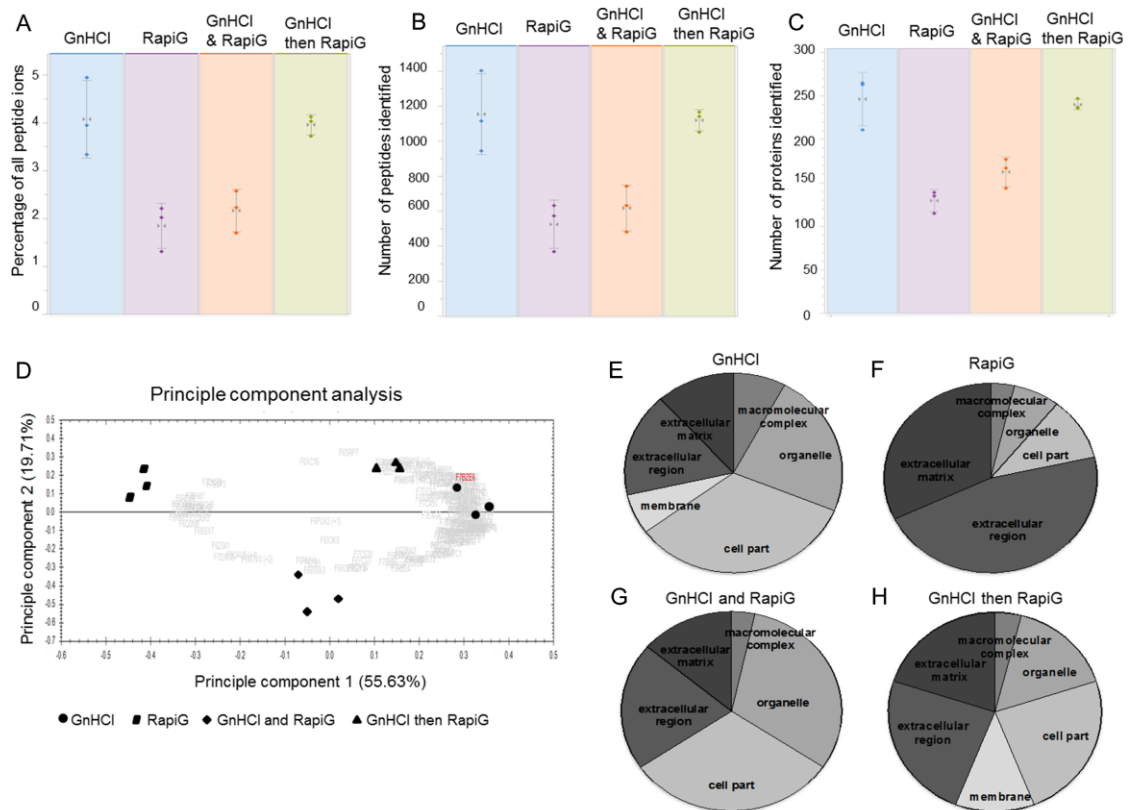


Figure 4. (A) The volcano plot demonstrates all differentially abundant proteins between GnHCl and GnHCl followed by RapiGest™ (fold change > 2 and $p < 0.05$). Collagens were most abundantly identified in GnHCl followed by RapiGest™ and proteoglycans in GnHCl extraction. All differentially abundant proteins between GnHCl and GnHCl followed by RapiGest™ can be found in Supplementary table 3. (B) 1D SDS-PAGE analysis of GnHCl followed by different concentrations of RapiGest™.

