

LONDON
SCHOOL of
HYGIENE
& TROPICAL
MEDICINE



Mbuba, CK; Ngugi, AK; Fegan, G; Ibinda, F; Muchohi, SN; Nyundo, C; Odhiambo, R; Edwards, T; Odermatt, P; Carter, JA; Newton, CR (2012) Risk factors associated with the epilepsy treatment gap in Kilifi, Kenya: a cross-sectional study. *Lancet neurology*, 11 (8). pp. 688-696. ISSN 1474-4422 DOI: [https://doi.org/10.1016/S1474-4422\(12\)70155-2](https://doi.org/10.1016/S1474-4422(12)70155-2)

Downloaded from: <http://researchonline.lshtm.ac.uk/251151/>

DOI: [10.1016/S1474-4422\(12\)70155-2](https://doi.org/10.1016/S1474-4422(12)70155-2)

Usage Guidelines

Please refer to usage guidelines at <http://researchonline.lshtm.ac.uk/policies.html> or alternatively contact researchonline@lshtm.ac.uk.

Available under license: <http://creativecommons.org/licenses/by-nc-nd/2.5/>

THE LANCET **Neurology**

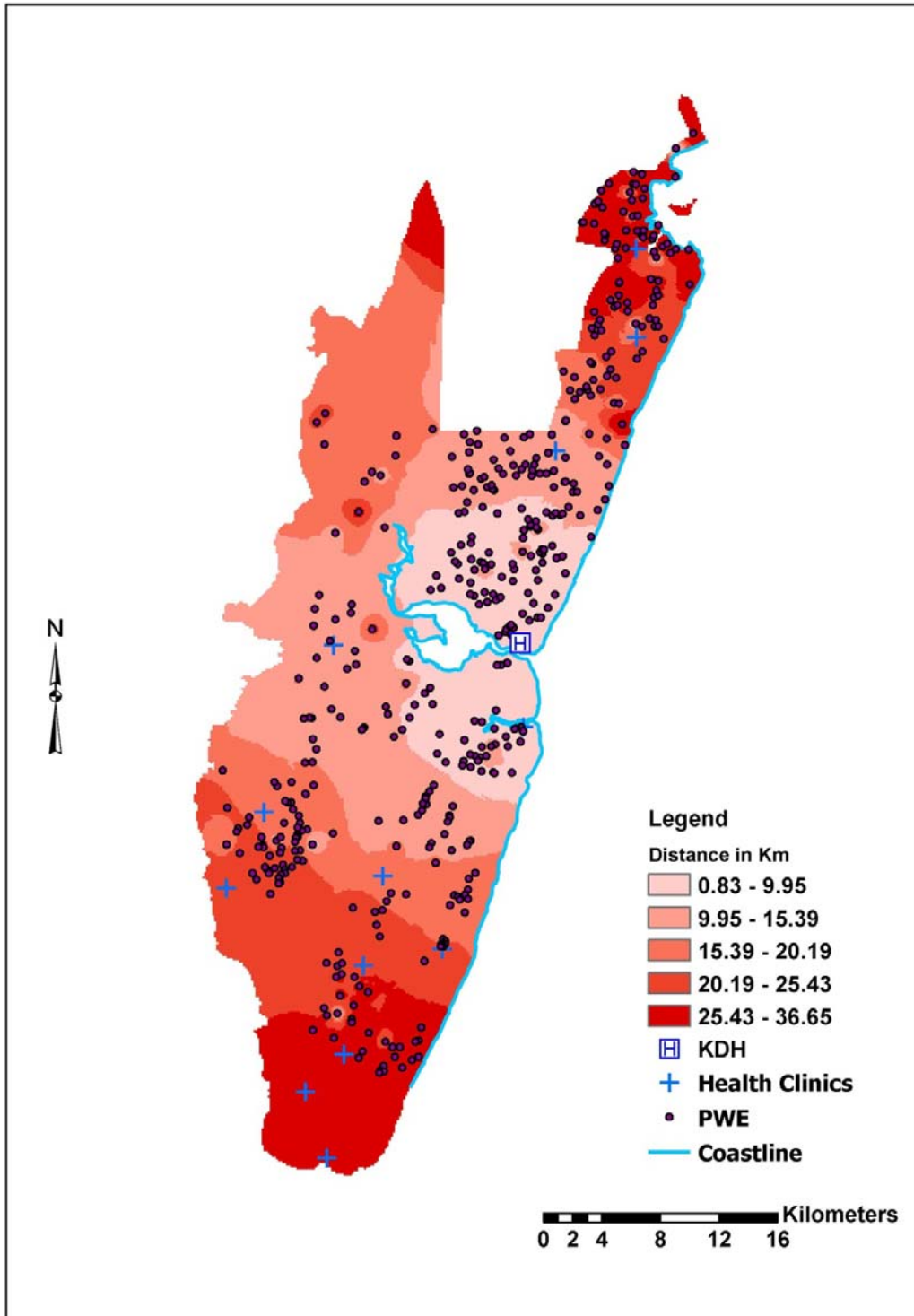
Supplementary webappendix

This webappendix formed part of the original submission and has been peer reviewed. We post it as supplied by the authors.

Supplement to: Mbuba CK, Ngugi AK, Fegan G, et al. Risk factors associated with the epilepsy treatment gap in Kilifi, Kenya: a cross-sectional study. *Lancet Neurol* 2012; published online July 6. [http://dx.doi.org/10.1016/S1474-4422\(12\)70155-2](http://dx.doi.org/10.1016/S1474-4422(12)70155-2).

Figure: Distances to health facility used by people with epilepsy to seek biomedical treatment

Euclidian distance to the health facility where the person with epilepsy (PWE) sought treatment (n=499). Background shading represents quintiles of the distance to Kilifi District Hospital (KDH), the health facility used by 79% of people with epilepsy accessing treatment.



Variable	Blood samples available (n=502)		Blood samples not available (n=171)		P-Value
	n	%	n	%	
Age: median(IQR)	502	17.5(11-29)	171	12(6-21)	<0.001
Sex : female	248	49.4	84	49.1	0.950
Religion					
Traditional	204	40.6	93	54.4	0.005
Christian	231	46.0	64	37.4	
Islam	67	13.4	14	8.2	
Education level:					
None	223	44.4	83	48.5	0.213
Primary	239	47.6	77	45.0	
Secondary	29	5.8	11	6.4	
Tertiary	11	2.2	0	0	
Marital status:					
Single	101	20.1	16	9.4	0.007
Married	305	60.8	129	75.4	
Separated	8	1.6	3	1.8	
Divorced	30	6.0	9	5.2	
Widowed	58	11.6	14	8.2	
Occupation:					
Farmer	269	53.6	104	60.8	0.432
Trader	112	22.3	33	19.3	
Casual	48	9.6	13	7.6	
Other	73	14.5	21	12.3	
Social economic status:					
Least poor	105	20.9	29	17.0	0.401
Less poor	96	19.1	38	22.2	
Poor	101	20.1	33	19.3	
Very poor	92	18.3	40	23.4	
Most poor	108	21.5	31	18.1	
Beliefs about causes of epilepsy: median(IQR)	502	8(6-10)	171	8(4-10)	0.259
Beliefs about biomedical treatment: median(IQR)	502	16(15-16)	171	16(14-16)	0.009
Beliefs about cultural treatment: median(IQR)	502	12(8-15)	171	12(8-15)	0.798
Risk and safety concerns beliefs: median(IQR)	502	8(8-8)	171	8(8-8)	0.644
Stereotype about PWE : median(IQR)	502	8(6-12)	171	8(6-12)	0.930
Stigma score : Median(IQR)	502	7(2-13)	171	5(2-12)	0.176
Distance to health facility(Kms)	502	15.7(0.43)	171	16.61(0.66)	0.293
Paying for AEDs:	181	36.1	46	26.9	0.029

Learning difficulties:	136	27.1	45	26.3	0.843
Duration of epilepsy					
<1	27	6.6	17	12.8	
1-3	35	8.6	23	17.39	
3-5	36	8.9	10	7.5	
>5	309	75.9	83	62.4	0.002
How often have you had seizures in the last 3 months					
None	142	28.3	67	39.2	
1-3	163	32.5	57	33.3	
4-6	78	15.5	16	9.4	
>6	119	23.7	31	18.1	0.017
Focal seizures	170	33.8	58	33.9	0.998
Injury during seizures: mean (SE)	502	55.0	171	39.2	<0.001
No of AEDs:					
Monotherapy	177	60	43	70.5	
Polytherapy	118	40	18	29.5	0.160
Duration of medication					
<1	57	19.3	14	23.0	
1-3	86	29.2	19	31.2	
4-5	36	12.2	5	8.2	
>5	116	39.3	23	37.7	0.767
Reported side effects of AED	24	8.1	8	13.1	0.216
AED stored out of sight	200	67.8	48	78.7	0.092
Good relation with provider	254	86.1	57	93.4	0.116
Availability of family support	238	80.7	49	80.3	0.959
Self-reported non-adherence	163	55.3	29	47.5	0.271

Supplementary Table: Comparison between those who gave blood samples and those who did not give blood samples.