



# THE UNIVERSITY *of* EDINBURGH

## Edinburgh Research Explorer

### **Molecular Characterization of Escherichia coli O157:H7 and non-O157 Shiga Toxin Producing E. coli from Retail Meat and Humans**

**Citation for published version:**

Ahmed, HA, MacLeod, E, M. El Bayomi, R, A. Mohsen, R & Nassar, AH 2017, 'Molecular Characterization of Escherichia coli O157:H7 and non-O157 Shiga Toxin Producing E. coli from Retail Meat and Humans' Zagazig Veterinary Journal, vol. 45, no. 250-261. DOI: 10.5281/zenodo.999570

**Digital Object Identifier (DOI):**

[10.5281/zenodo.999570](https://doi.org/10.5281/zenodo.999570)

**Link:**

[Link to publication record in Edinburgh Research Explorer](#)

**Document Version:**

Publisher's PDF, also known as Version of record

**Published In:**

Zagazig Veterinary Journal

**General rights**

Copyright for the publications made accessible via the Edinburgh Research Explorer is retained by the author(s) and / or other copyright owners and it is a condition of accessing these publications that users recognise and abide by the legal requirements associated with these rights.

**Take down policy**

The University of Edinburgh has made every reasonable effort to ensure that Edinburgh Research Explorer content complies with UK legislation. If you believe that the public display of this file breaches copyright please contact [openaccess@ed.ac.uk](mailto:openaccess@ed.ac.uk) providing details, and we will remove access to the work immediately and investigate your claim.



## Molecular Characterization of *Escherichia coli* O157:H7 and non-O157 Shiga Toxin Producing *E. coli* from Retail Meat and Humans

Heba A. Ahmed<sup>1\*</sup>, Ewan T. MacLeod<sup>2</sup>, Rasha M. El Bayomi<sup>3</sup>, Rasha A. Mohsen<sup>4</sup> and Arwa H. Nassar<sup>4</sup>

<sup>1</sup>Zoonoses Department, Faculty of Veterinary Medicine, Zagazig University, 44511, Zagazig, Egypt

<sup>2</sup>Division of Infection and Pathway Medicine, Deanery of Biomedical Sciences, College of Medicine and Veterinary Medicine, 1 George Square, Edinburgh, EH8 9JZ, Scotland, UK

<sup>3</sup>Food Control Department, Faculty of Veterinary Medicine, Zagazig University, 44511, Zagazig, Egypt

<sup>4</sup>Animal Health Research Institute, Mansoura Branch, Mansoura, Egypt

Article History: Received: 28/4/2017 Received in revised form: 25/8/2017 Accepted: 8/9/2017

### Abstract

A total of 550 meat samples (300 minced beef and 250 chicken meat) marketed in Zagazig City, Sharkia Governorate, Egypt, as well as 150 human stool samples were examined for Shiga toxin producing *E. coli*. Results revealed that the isolation rates of *E. coli* O157:H7 versus non- O157 were 1.7% versus 2.3% in minced beef, 0.8% versus 2% in chicken meat and 0.7% versus 2.7% in human stools. Other identified serotypes were including O111:H8 (25%), O26:H11 (20.8%), O55:H7 (16.7%) and O113:H21 (4.2%). Virulence associated genes were identified in *E. coli* serotypes, *stx1* and *stx2* were characterized in 16.7% and 62.5% of the isolates, while, *eaeA* and *hlyA* genes were identified in 50% and 70.8% of the examined serotypes, respectively. Genotyping of *E. coli* O157:H7 serotype from different sources using Enterobacterial repetitive intergenic consensus polymerase chain reaction (ERIC-PCR) fingerprinting revealed heterogeneity of the isolates, however, human and minced beef isolates were grouped in the same cluster indicating potential transmission of infection from contaminated beef to human consumers. In conclusion, ERIC-PCR is a highly discriminatory, reliable and cost-effective tool for tracing sources of infection with bacteria. Public health education and application of strict hygienic measures during slaughtering, transportation and preparation of meat are essential to minimize the risk of contamination and transmission of infection to consumers.

**Keywords:** STEC, Poultry meat, Beef, Shiga toxin, *eaeA* gene, *hly* gene

### Introduction

*Escherichia coli* is a normal intestinal microflora in humans and animals, however, certain serotypes can result in intestinal and extra-intestinal infections with manifestations ranging from mild diarrhea to severe hemorrhagic colitis (HC) and hemolytic uraemic syndrome (HUS) [1]. The pathogenicity of some *E. coli* serotypes is attributed to the acquisition of certain genes that enable them to produce different diseases [2]. According to their virulence factors, pathogenic *E. coli* have been classified to several pathotypes including Shiga toxin-producing *E. coli* (STEC) [1]. Nearly 82% of STEC strains of animal origin are related to those isolated from humans, which in turn

indicate the zoonotic potential of such strains [3]. *E. coli* O157:H7 has been widely known to be directly linked with foodborne infections, however, outbreaks due to non-O157 *E. coli* have increased recently [4]. Other serogroups including *E. coli* O26, O91, O103, O111, O118, O113 and O145 have been reported as STEC [5-7]. Many STEC harbor shiga toxin 1 and shiga toxin 2 genes (*stx1* and *stx2*), such genes are responsible for the damage of endothelial and tubular cells resulting in acute renal failure [8]. Moreover, the presence of *eaeA* gene (*E. coli* attachment and effacement) encoding the intimin protein is essential for pathogenicity of *E. coli* resulting in a characteristic histopathological feature known as "attaching and effacing" which is associated

\*Corresponding author email: (heba\_ahmed@zu.edu.eg), Zoonoses Department, Faculty of Veterinary Medicine, Zagazig University, Egypt. 250

with an increased risk of bloody diarrhea [9]. Other virulence factors such as enterohemolysin encoded by *hlyA* gene causing enterocyte and leukocyte lysis have been reported [10]. Molecular typing is useful to determine the genetic relationship of pathogens isolated from different sources. Enterobacterial repetitive intergenic consensus polymerase chain reaction (ERIC PCR) is a simple, cost effective tool with high discriminatory power for genotyping of different bacterial pathogens [11-13]. In order to investigate the occurrence of STEC in Zagazig City, Egypt, minced beef and chicken meat purchased from food outlets and human samples from outpatient clinics at Sharkia Governorate were examined. Characterization of virulence associated genes and genotyping of the isolates from different sources were also carried out.

## Material and Methods

### Sampling

A total of 300 fresh minced beef and 250 fresh chicken breast meat samples obtained from retail outlets and 150 stool swabs diarrheic (n=48) and apparently healthy persons (n=102) attending the outpatient clinic of Al-Ahrar General Hospital, Sharkia Governorate were examined.

**Table 1: Prevalence of STEC serotypes meat and human samples (n: number of samples)**

Sample type	<i>E. coli</i> O157:H7	Non-O157	Total
Minced beef (n=300)	5 (1.7%)	7 (2.3%)	12 (4%)
Chicken meat (n=250)	2 (0.8%)	5 (2%)	7 (2.8%)
Human stool (n=150)	1 (0.7%)	4 (2.7%)	5 (3.3%)
Diarrheic (n=48)	1 (2.1%)	1 (2.1%)	2 (4.2%)
Apparently healthy (n=102)	0	3 (2.9%)	3 (2.9%)

### Molecular characterization

#### DNA extraction

Genomic DNA was extracted from the serologically typed STEC isolates using Bacterial DNA extraction kit (Spin-column) (BioTeke Corporation Shanghai, China, Catalogue # DP2001) according to the manufacturer's guidelines. The PCR was carried out at the PCR Unit, Virology Department, Faculty of Veterinary Medicine, Zagazig University.

### Isolation and identification of STEC

Meat samples (25 g) homogenized with 225 mL modified tryptone soya broth base (Oxoid, CM0989) containing vancomycin (40 µg/mL) as well as stool swabs inoculated into tubes containing the same media were incubated at 37°C for 18 h. Enriched cultures were plated onto Sorbitol MacConkey agar (Oxoid, CM0813) containing cefixime and potassium tellurite (Oxoid SR0172E). Twenty-five grams from meat samples were homogenized with 225mL modified tryptone soya broth base (Oxoid, CM0989) containing vancomycin (40 µg/mL) and then incubated at 37°C for 18 h. Enriched cultures were plated onto Sorbitol MacConkey agar (Oxoid, CM0813) containing cefixime and potassium tellurite (Oxoid SR0172E). The plates were then incubated at 37°C for 24 h. Presumptive colorless (suspected *E. coli* O157:H7) and/or dark pink colonies (suspected non-O157 strains) were purified and sub-cultured for confirmation. The colonies were confirmed using biochemical tests as previously described [14]. *E. coli* isolates were then serogrouped using rapid diagnostic *E. coli* antisera sets [15] (DIFCO Laboratories, Detroit Michigan 48232-7058, USA). Serotyping was carried out at Bacteriology Department, Faculty of Veterinary Medicine, Benha University.

#### Molecular identification of virulence associated genes

The serologically identified STEC strains were subjected to PCR for the amplification of *stx1*, *stx2*, *hlyA* and *eaeA* genes. The reaction was performed using oligonucleotide primers sets specific for each gene (AlphaDNA, Montreal, Quebec, Canada). Primers for the amplification of the aforementioned genes are Stx1F- 5'-AAA TCG CCA TTC GTT GAC TAC TTCT-3' and Stx1R- 5'-TGC CAT TCT GGC AAC TCG CGA TGC A-3' producing 366 bp of *stx1* gene [16], Stx2F – 5'-CGA

TCG TCA CTC ACT GGT TTC ATC A-3' and Stx2R- 5'-GGA TAT TCT CCC CAC TCT GAC ACC-3' producing 282 bp of *stx2* gene [16], EAE1- 5'-TGC GGC ACA ACA GGC GGC GA-3' and EAE2- 5'-CGG TCG CCG CAC CAG GAT TC-3' amplifying 629 bp of *eaeA* gene [17], finally, Hly F- 5'-CAA TGC AGA TGC AGA TAC CG-3' and Hly R- 5'-CAG AGA TGT CGT TGC AGC AG-3' producing 432 bp of *hlyA* gene [18].

The reactions were performed in 20 µL reaction volume using readymade 2x power *Taq* PCR master mix (BioTeke Corporation, Shanghai, China) in Primus Thermal Cycler (MWG-Biotech Thermal Cycler, Ebersberg, Germany). Amplification products were resolved in 1.5% (w/v) agarose gels along with 100 bp molecular weight ladder (BioTeke Corporation, Shanghai, China). The gels were run in 1xTBE, 5 µM ethidium bromide for at least 45 minutes at 100 volts and then visualized under ultraviolet light of a transilluminator (Spectroline, Westbury, NY, USA).

#### Genotyping of *E. coli* O157:H7 isolates

Two primer sets with the sequences ERIC-DG111-F 5'-ATG TAA GCT CCT GGG GAT TCA C-3' and ERIC-DG112-R 5'-AAG TAA GTG ACT GGG GTG AGC G-3' were used to amplify repetitive sequences contained in the chromosomal DNA of *E. coli* O157:H7 isolates using single amplification profile [19]. Depending on the presence or absence of each band, a binary code was used to transform ERIC-PCR fingerprinting data. Un weighted pair group method with arithmetic average (UPGMA) and sequential hierarchical and

nested clustering routine were used to generate a dendrogram using SPSS, Inc. version 22 (IBM Corp. 2013, Armonk, NY). The Simpson's index of diversity (*D*) was used to measure the discriminatory power of ERIC-PCR [20]. *D* value of more than 0.9 indicates good differentiation.

#### Results

Table (1) showed that *E. coli* O157:H7 was isolated from 1.7%, 0.8% and 0.7% of minced beef, chicken meat and human stools, respectively. out of the examined minced beef and chicken meat samples, 1.7% and 0.8% were positive for *E. coli* O157:H7, respectively, while, 0.7% of the human stool samples were positive.

However, 2.3%, 2% and 2.7% of minced beef, chicken meat and human stool samples were respectively positive for non-O157 STEC.

Serotypes of the identified non-O157 STEC strains were distributed in the examined samples as shown in Table (2). The most prevalent serotype was O111:H8 (25%), followed by, O26:H11 (20.8%), O55:H7 (16.7%) and O113:H21 (4.2%).

Virulence associated genes were detected in the examined isolates using PCR (Figure 1). Table (3) shows the distribution of the investigated genes in each serotype. STEC strains with *stx2* gene were more frequent than that carrying *stx1* gene (62.5% versus 16.7%, respectively). The *eaeA* and *hlyA* genes, were identified in 12 (50%) and 17 (70.8%), respectively.

**Table 2: Distribution of *E. coli* serotypes in meat and human samples**

Serotype	Source			Total
	Minced beef	Chicken	Humans	
O157:H7	5	2	1	8 (33.3%)
O26:H11	2	1	2	5 (20.8%)
O111:H8	3	2	1	6 (25%)
O113:H21	1	0	0	1 (4.2%)
O55:H7	1	2	1	4 (16.7%)
<b>Total</b>	12	7	5	24

The banding patterns obtained by ERIC-PCR revealed multiple DNA fragments ranging in size between 148 and 2900 bp

(Figure 2). Eight profiles were produced and they were referred to as E1 to E8. Simpson's index of diversity calculation revealed a high

discriminatory index of ERIC-PCR ( $D = 1$ ). The dendrogram analysis of eight *E. coli* O157:H7 isolates of minced beef, chicken meat and human origins showed three clusters, cluster I contained 2 isolates of beef and chicken meat origin, cluster II showed 2 isolates of beef meat and human origin, while, cluster III showed 2 isolates of beef and chicken meat origin. In addition, two single isolates of beef meat origin were identified.

## Discussion

Cattle are considered the main reservoir of STEC that are carried in the gastrointestinal tract without apparent symptoms [21]. Contamination of the carcass usually occurs during slaughtering, dressing and evisceration [22]. Consumption of ground beef poses more risk than intact muscles because it can be contaminated during the grinding operation [23].

*E. coli* O157:H7 was isolated from 1.7% of minced beef meat in the present study. Nearly similar isolation rate (1%) was reported in

Belgium [5], while, higher percentages of 3.2%, 6.2%, 7.6% and 26.7% were obtained in UK [24], Serbia [22], Turkey [25] and Egypt [26], respectively. The variation in the prevalence of *E. coli* O157:H7 in these samples could be attributed to the differences in the study areas and hygienic measures during handling and mincing of meat. In contrary, Cadirci, Siriken [27] reported that *E. coli* O157:H7 was not isolated from ground beef samples in Turkey and only 0.1% of minced beef samples in France were contaminated with the pathogen [28].

Globally, the prevalence of non-O157 STEC in beef is more than the prevalence of O157, the range of isolation rates of non-O157 from beef samples at outlets was 3-62.5% [7]. In the present study, 2.3% of minced beef samples were contaminated with different serotypes of STEC other than *E. coli* O157:H7. Higher isolation rates of 16.7% in Egypt [29], 12% in New Zealand [30], 12% in Spain [31] and 36.4% in Canada [32] have previously been reported.

**Table 3: Distribution of virulence genes (*stx1*, *stx2*, *eaeA*, *hly*) in the identified *E. coli* O157:H7 and non-O157 isolates**

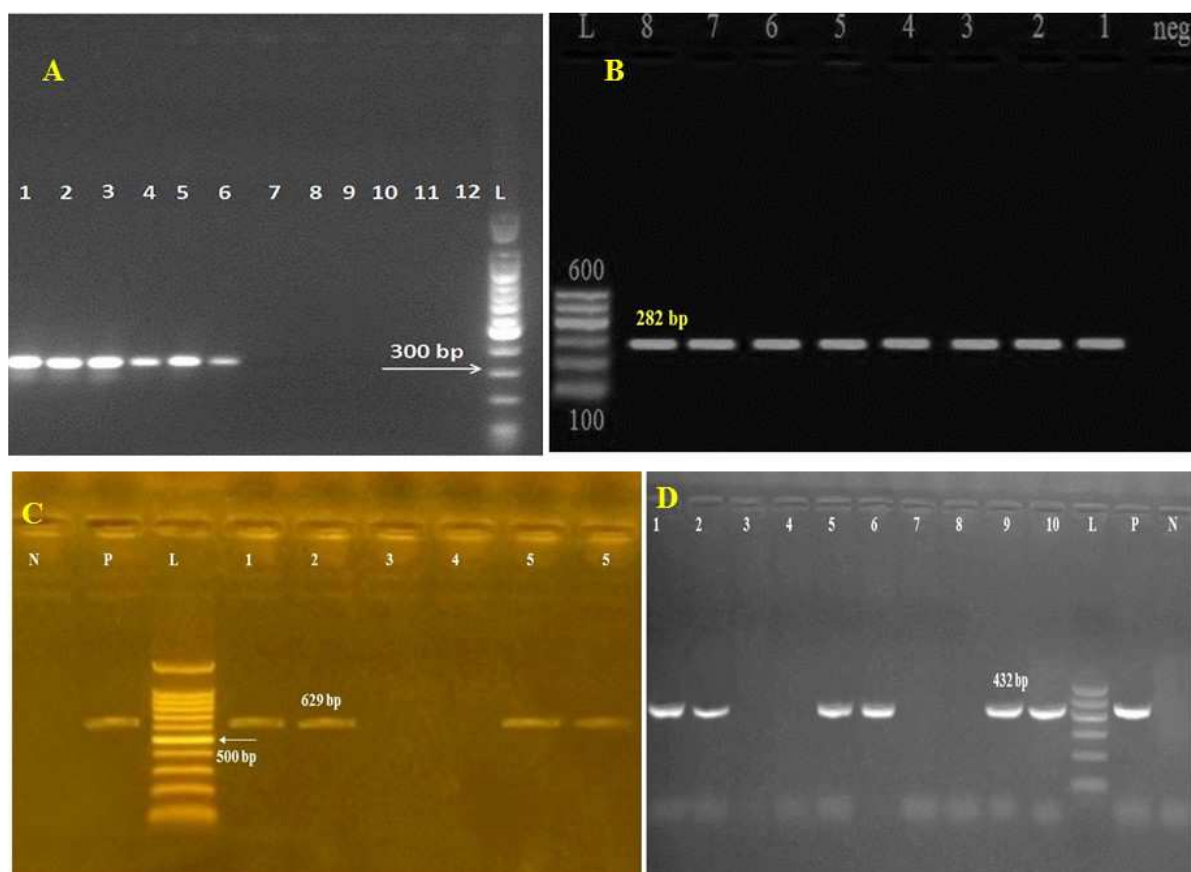
Serotype	Sources	Virulence associated genes			
		<i>Stx1</i>	<i>Stx2</i>	<i>eaeA</i>	<i>hlyA</i>
O157:H7	Minced beef	+	+	+	+
O157:H7	Minced beef	-	+	-	+
O157:H7	Minced beef	-	+	-	+
O157:H7	Minced beef	+	+	+	-
O157:H7	Minced beef	+	+	-	+
O157:H7	Chicken	-	+	+	+
O157:H7	Chicken	-	+	+	+
O157:H7	Humans	+	+	+	+
O26:H11	Minced beef	-	-	-	-
O26:H11	Minced beef	-	-	-	-
O26:H11	Chicken	-	-	-	-
O26:H11	Humans	-	-	+	+
O26:H11	Humans	-	+	-	+
O111:H8	Minced beef	-	+	-	+
O111:H8	Minced beef	-	+	-	-
O111:H8	Minced beef	-	+	+	-
O111:H8	Chicken	-	-	+	-
O111:H8	Chicken	-	+	-	+
O111:H8	Humans	-	-	-	+
O113:H21	Minced beef	-	-	+	+
O55:H7	Minced beef	-	-	+	+
O55:H7	Chicken	-	+	+	+
O55:H7	Chicken	-	+	+	+
O55:H7	Humans	-	-	-	+
<b>Total</b>		4 (16.7%)	15 (62.5%)	12 (50%)	17 (70.8%)

The role of chicken meat as a potential source of *E. coli* O157:H7 has been previously reported [33-35]. The isolation rate of *E. coli* O157:H7 from chicken meat samples during the current study (0.8%) was lower than the prevalence of 4% [36], 5% [37] and 1.3% [38] reported also in Egypt. Studies in other countries have also shown different isolation rates, for example 1.1% in Turkey [33], 3% in China [39], 7.6% in Argentina [40] and 7.4% in Iran [35].

Non-O157:H7 STEC of serotypes O111:H8, O26:H11 and O55:H7 were identified in 2% of chicken meat samples in the current study. In Iran, 34.6% of chicken meat samples were contaminated with STEC of different serogroups including O111 (1.2%), O26 (11%) [35]. In

another study in Korea, *E. coli* other than O157 were identified in 4.6% of chicken meat samples [41].

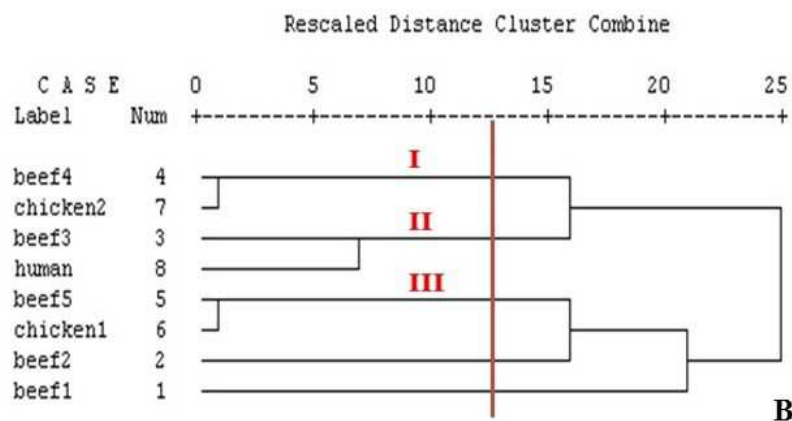
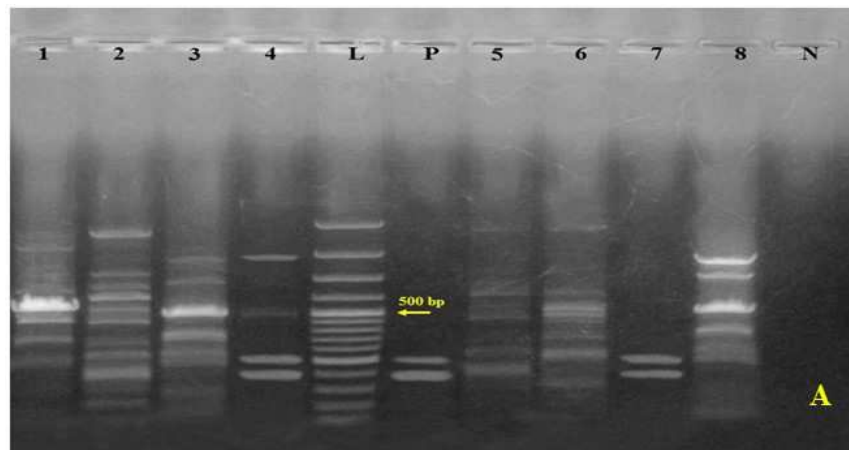
In the current study, *E. coli* O157:H7 was isolated from 0.7% of human stool samples. This is similar to studies carried out in South Africa [42] and Canada where prevalence was reported to be 0.8% and 2.3%, respectively. However, higher isolation rate (7.5%) was reported in a different study in South Africa [43]. The isolation of non-O157 strains from human stools (2.7%) in the present study was comparable to 2.5% reported in Canada [44] and USA, where 4.2% of stool sample were positive [45].



**Figure 1:** Sample of gel picture showing amplification of different virulence associated genes in *E. coli* isolates. A: *stx1* gene amplified 366 bp product, B: *stx2* gene amplified 282 bp product, C: *eaeA* gene amplified 629 bp product, D: *hlyA* gene amplified 432 bp product. L: 100 bp ladder, Numbers indicated positive and negative samples, P: positive controls kindly obtained from Microbiology Department, Faculty of Veterinary Medicine, Zagazig University. N: negative controls.

Serotyping revealed that O111:H8 was the most prevalent serogroup followed by O26:H11, O55:H7 and O113:H21. These serotypes are associated with human illness [46]. Another study in Egypt reported similar findings [29]. They reported that the distribution of the identified 18 isolates from beef samples was 7 (38.9%) O111:H8, 6 (33.3%) O26:H11, 2 (11.1%) O111: He and one (5.56%) for each of O55:H7, O126:H5, and O128:H2. In human stool samples, O157:H7, O26:H11, O111:H8 and O55:H7 were identified. In accordance, the most strains of EHEC isolated from humans in Japan are belonging to serotypes O157, O26, O111, and O128 [47]. *E. coli* O26:H11/He was found to be the most often serotype associated with HUS development in 40% of patients [48].

In the current study, four *E. coli* O157:H7 isolates harbored *stx2* gene only (50%), while, the other 4 (50%) were positive for *stx1/stx2* genes. However, 5 (62.5%) and 7 (87.5%) carried *eaeA* and *hlyA* genes, respectively. The present findings supported that most *E. coli* O157 isolates harbored *stx2* [27]. *E. coli* O157:H7 isolates harboring all investigated genes were isolated from the case of diarrhea. This was consistent with other findings [42]. However, a study reported *E. coli* O157:H7 isolate from diarrheic patient without *stx* genes [49]. Thus, pathogenicity of *E. coli* O157:H7 depends on the production of different virulence factors in addition to physiological factors in the host [42].



**Figure 2: A:** ERIC-PCR fingerprinting of 8 *E. coli* O157:H7 isolates of different origins in 1.5% agarose gel, L: 100 bp Molecular marker, N: Negative control. **B:** Dendrogram showing the relatedness of the isolates as determined by ERIC-PCR fingerprinting using SPSS computer software program.

Among non-O157 STEC isolates, 7 (43.8%), 6 (37.5%) and 10 (62.5%) harbored *stx2*, *eaeA* and *hlyA* genes, respectively. In Egypt, 9 (50%), 11 (61.1%), and 9 (50%) non-O157 STEC strains harbored *stx1*, *stx2*, and *eaeA* genes, respectively [29]. In France, STEC isolated from fresh beef showed that *stx1*, *stx2* and both genes were identified in 39%, 50% and 11% of the isolates, while, none of them carried *eaeA* gene [50]. Another study in Korea, revealed that STEC from fresh beef carried *stx2* (64%), both *stx1* and *stx2* (14%), both *stx2* and *eaeA* (14%) and both *stx1* and *eaeA* (7%) [41]. While, in Germany, STEC isolated from meat harbored *stx1*, *stx2* and *eaeA* with the respective percentages of 40, 80.8, 5% [51].

Strains that carry only *stx2* are more virulent than those carrying only *stx1* or even both *stx1* and *stx2*, and are more associated with cases of HUS in humans [29, 46, 52]. Production of Stx2 is mainly associated with HUS, moreover, this toxin is reported to be 1000 times more cytotoxic than Stx1 on human renal endothelial cells [53]. While, *eaeA* gene was reported in STEC strains associated with severe human illnesses such as bloody diarrhea and HUS [46, 54, 55]. However, STEC strains lacking *eaeA* gene have been reported to cause outbreaks [56].

The higher frequency of *stx2* isolation in STEC isolates from beef was in accordance with other studies [23, 55, 57, 58]. However, in beef, *eaeA* gene was reported in 100% of STEC O157:H7 and 19% of non-O157 isolates [31]. In contrary, all STEC strains from meat products in Australia were negative for *eaeA* gene [59].

The detection of *eaeA* gene in *E. coli* O157:H7 isolates in the current study was consistent with 54.7% reported by Ojo, Ajuwape [60] in Nigeria. The presence of this gene in STEC strains has been strongly correlated to their implication in severe illness resulting in HUS [60, 61]. However, some STEC strains that are *eaeA* negative also cause sporadic HUS cases [60, 62].

Several studies have also reported inconsistent carriage percentages of *stx1*, *stx2* and *eaeA* genes in *E. coli* O157:H7 strains. For instance, in Thailand, two *E. coli* O157:H7

isolates recovered from chicken meat were negative for Shiga like toxin production [63]. Whereas, in Iran, all 31 *E. coli* O157:H7 isolates from chicken meat were positive for *stx1* and *eaeA*, while negative for *stx2* [35]. In a Czech study, only 40.9% of *E. coli* O157:H7 isolated from poultry meat samples were positive for *stx1*, *stx2* and *eaeA* [64].

ERIC-PCR has been used previously for genotyping of different bacteria including *E. coli* isolates of different origins in order to determine the genetic relationship between the isolates [11, 12, 65].

The present study revealed that *E. coli* O157:H7 isolates of beef, chicken and meat origin were of different genotypes indicating heterogeneity. However, the presence of human and beef meat isolate in the same cluster indicated the possibility of potential *E. coli* transmission from contaminated beef meat to human consumers. Another study on *E. coli* O157:H7 isolates reported that 94 isolates of pig, pork, cattle, beef, water and human origin in South Africa were arranged into eight clusters with similarities ranged from 72-91% between the isolates from animal feces and meat samples indicating the possibility of cross contamination [65]. They also concluded that ERIC-PCR genotyping is reliable in comparing *E. coli* O157:H7 isolates of different sources.

## Conclusion

It could be concluded from the current study that STEC are prevalent in chicken and beef meat sold in the study area as well as in their consumers. These results substantiate the role of chicken and beef meat in transmitting these pathogens to human. The study recommended using of ERIC-PCR for genotyping of the isolates from different sources due to its reliability, cost effectiveness and high discriminatory power.

## Conflict of interest

The authors declare no conflict of interest.

## Referenc

- [1] Gyles, C.L. (2007): Shiga toxin-producing *Escherichia coli*: an overview. J Anim Sci, 85(13 Suppl): E45-62.



- [2] Kaper, J.B.; Nataro, J.P. and Mobley, H.L. (2004): Pathogenic *Escherichia coli*. *Nat Rev Microbiol*, 2(2): 123-40.
- [3] Blanco, M.; Blanco, J.E.; Mora, A.; Rey, J.; Alonso, J.M.; Hermoso, M.; Hermoso, J.; Alonso, M.P.; Dahbi, G.; Gonzalez, E.A.; Bernardez, M.I. and Blanco, J. (2003): Serotypes, virulence genes, and intimin types of Shiga toxin (verotoxin)-producing *Escherichia coli* isolates from healthy sheep in Spain. *J Clin Microbiol*, 41(4): 1351-6.
- [4] Chen, Y. and Hsueh, P. (2011): European *Escherichia coli* O104:H4 outbreak. *J Formos Med Assoc*, 110(10): 611-2.
- [5] Tutenel, A.V.; Pierard, D.; Van Hoof, J.; Cornelis, M. and De Zutter, L. (2003): Isolation and molecular characterization of *Escherichia coli* O157 isolated from cattle, pigs and chickens at slaughter. *Int J Food Microbiol*, 84(1): 63-9.
- [6] Blanco, J.; Blanco, M.; Blanco, J.E.; Mora, A.; Gonzalez, E.A.; Bernardez, M.I.; Alonso, M.P.; Coira, A.; Rodriguez, A.; Rey, J.; Alonso, J.M. and Usera, M.A. (2003): Verotoxin-producing *Escherichia coli* in Spain: prevalence, serotypes, and virulence genes of O157:H7 and non-O157 VTEC in ruminants, raw beef products, and humans. *Exp Biol Med (Maywood)*, 228(4): 345-51.
- [7] Fukushima, H. and Seki, R. (2004): High numbers of Shiga toxin-producing *Escherichia coli* found in bovine faeces collected at slaughter in Japan. *FEMS Microbiol Lett*, 238(1): 189-97.
- [8] Williams, J.M.; Boyd, B.; Nutikka, A.; Lingwood, C.A.; Barnett Foster, D.E.; Milford, D.V. and Taylor, C.M. (1999): A comparison of the effects of verocytotoxin-1 on primary human renal cell cultures. *Toxicol Lett*, 105(1): 47-57.
- [9] Caprioli, A.; Morabito, S.; Brugere, H. and Oswald, E. (2005): Enterohaemorrhagic *Escherichia coli*: emerging issues on virulence and modes of transmission. *Vet Res*, 36(3): 289-311.
- [10] Beutin, L.; Montenegro, M.A.; Orskov, I.; Orskov, F.; Prada, J.; Zimmermann, S. and Stephan, R. (1989): Close association of verotoxin (Shiga-like toxin) production with enterohemolysin production in strains of *Escherichia coli*. *J Clin Microbiol*, 27(11): 2559-64.
- [11] Ahmed, H.A.; El Hofy, F.I.; Ammar, A.M.; Abd El Tawab, A.A. and Hefny, A.A. (2015): ERIC-PCR genotyping of some *Campylobacter jejuni* isolates of chicken and human origin in Egypt. *Vector Borne Zoonotic Dis*, 15(12): 713-7.
- [12] Awadallah, M.A.; Ahmed, H.A.; Merwad, A.M. and Selim, M.A. (2016): Occurrence, genotyping, shiga toxin genes and associated risk factors of *E. coli* isolated from dairy farms, handlers and milk consumers. *Vet J*, 217: 83-8.
- [13] Zhang, S.; Zhu, X.; Wu, Q.; Zhang, J.; Xu, X. and Li, H. (2015): Prevalence and characterization of *Escherichia coli* O157 and O157:H7 in retail fresh raw meat in South China. *Ann Microbiol*, 65(4): 1993-9.
- [14] Quinn, P.J., Carter, M.E., Markey, B.K., Donnelly, W.J.C., Leonard, F.C. (2002): *Veterinary Microbiology and Microbial diseases*. MPG. Book 1st ed Bodmin, Cornwall, UK.
- [15] Kok, T.; Worswich, D. and Gowans, E. (1996): Some serological techniques for microbial and viral infections. In: Collee J, Fraser A, Marmion B, Simmons A, editors. *Practical Medical Microbiology* 14<sup>th</sup> ed. Edinburgh, UK: Churchill Livingstone.
- [16] Brian, M.J.; Frosolono, M.; Murray, B.E.; Miranda, A.; Lopez, E.L.; Gomez, H.F. and Cleary, T.G. (1992): Polymerase chain reaction for diagnosis of enterohemorrhagic *Escherichia coli* infection and hemolytic-uremic syndrome. *J Clin Microbiol*, 30(7): 1801-6.
- [17] Heuvelink, A.E.; van de Kar, N.C.; Meis, J.F.; Monnens, L.A. and Melchers, W.J. (1995): Characterization of verocytotoxin-producing *Escherichia coli* O157 isolates from patients with haemolytic uraemic syndrome in Western Europe. *Epidemiol Infect*, 115(1): 1-14.

- [18] Idress, M.; Mussarat, U.; Badshah, Y.; Qamar, R. and Bokhari, H. (2010): Virulence factors profile of drug-resistant *Escherichia coli* isolates from urinary tract infections in Punjab, Pakistan. *Eur J Clin Microbiol Infect Dis*, 29(12): 1533-7.
- [19] Versalovic, J.; Koeuth, T. and Lupski, J.R. (1991): Distribution of repetitive DNA sequences in eubacteria and application to fingerprinting of bacterial genomes. *Nucleic Acids Res*, 19(24): 6823-31.
- [20] Hunter, P.R. (1990): Reproducibility and indices of discriminatory power of microbial typing methods. *J Clin Microbiol*, 28(9): 1903-5.
- [21] Renter, D.G.; Sargeant, J.M.; Oberst, R.D. and Samadpour, M. (2003): Diversity, Frequency, and Persistence of *Escherichia coli* O157 Strains from Range Cattle Environments. *Appl Environ Microbiol*, 69(1): 542-7.
- [22] Nastasijevic, I.; Mitrovic, R. and Buncic, S. (2009): The occurrence of *Escherichia coli* O157 in/on faeces, carcasses and fresh meats from cattle. *Meat Sci*, 82(1): 101-5.
- [23] Etcheverria, A.I.; Padola, N.L.; Sanz, M.E.; Polifroni, R.; Kruger, A.; Passucci, J.; Rodriguez, E.M.; Taraborelli, A.L.; Ballerio, M. and Parma, A.E. (2010): Occurrence of Shiga toxin-producing *E. coli* (STEC) on carcasses and retail beef cuts in the marketing chain of beef in Argentina. *Meat Sci*, 86(2): 418-21.
- [24] McEvoy, J.M.; Doherty, A.M.; Sheridan, J.J.; Thomson-Carter, F.M.; Garvey, P.; McGuire, L.; Blair, I.S. and McDowell, D.A. (2003): The prevalence and spread of *Escherichia coli* O157:H7 at a commercial beef abattoir. *J Appl Microbiol*, 95(2): 256-66.
- [25] Sarimehmetoglu, B.; Aksoy, M.H.; Ayaz, N.D.; Ayaz, Y.; Kuplulu, O. and Kaplan, Y.Z. (2009): Detection of *Escherichia coli* O157:H7 in ground beef using immunomagnetic separation and multiplex PCR. *Food Control*, 20(4): 357-61.
- [26] Sallam, K.I.; Mohammed, M.A.; Ahdy, A.M. and Tamura, T. (2013): Prevalence, genetic characterization and virulence genes of sorbitol-fermenting *Escherichia coli* O157:H- and *E. coli* O157:H7 isolated from retail beef. *Int J Food Microbiol*, 165(3): 295-301.
- [27] Cadirci, O.; Siriken, B.; Inat, G. and Kevenk, T.O. (2010): The prevalence of *Escherichia coli* O157 and O157:H7 in ground beef and raw meatball by immunomagnetic separation and the detection of virulence genes using multiplex PCR. *Meat Sci*, 84(3): 553-6.
- [28] Vernozy-Rozand, C.; Ray-Gueniot, S.; Ragot, C.; Bavai, C.; Mazuy, C.; Montet, M.P.; Bouvet, J. and Richard, Y. (2002): Prevalence of *Escherichia coli* O157:H7 in industrial minced beef. *Lett Appl Microbiol*, 35(1): 7-11.
- [29] Mohammed, M.A.; Sallam, K.I.; Eldaly, E.A.Z.; Ahdy, A.M. and Tamura, T. (2014): Occurrence, serotypes and virulence genes of non-O157 Shiga toxin-producing *Escherichia coli* in fresh beef, ground beef, and beef burger. *Food Control*, 37: 182-7.
- [30] Brooks, H.J.; Mollison, B.D.; Bettelheim, K.A.; Matejka, K.; Paterson, K.A. and Ward, V.K. (2001): Occurrence and virulence factors of non-O157 Shiga toxin-producing *Escherichia coli* in retail meat in Dunedin, New Zealand. *Lett Appl Microbiol*, 32(2): 118-22.
- [31] Mora, A.; Blanco, M.; Blanco, J.E.; Dahbi, G.; López, C.; Justel, P.; Alonso, M.P.; Echeita, A.; Bernardez, M.I.; Gonzalez, E.A. and Blanco, J. (2007): Serotypes, virulence genes and intimin types of Shiga toxin (verocytotoxin)-producing *Escherichia coli* isolates from minced beef in Lugo (Spain) from 1995 through 2003. *BMC Microbiol*, 7(1): 13.
- [32] Read, S.C.; Gyles, C.L.; Clarke, R.C.; Lior, H. and McEwen, S. (1990): Prevalence of verocytotoxigenic *Escherichia coli* in ground beef, pork, and chicken in southwestern Ontario. *Epidemiol Infect*, 105(1): 11-20.

- [33] Akkaya, L.; Atabay, H.I.; Kenar, B. and Alisarli, M. (2006): Prevalence of verocytotoxigenic *Escherichia coli* O157:H7 on chicken carcasses sold in Turkey. *Bulletin of the Veterinary Institute in Pulawy*, 50(4): 513-6.
- [34] Doyle, M.P. and Schoeni, J.L. (1987): Isolation of *Escherichia coli* O157:H7 from retail fresh meats and poultry. *Appl Environ Microbiol*, 53(10): 2394-6.
- [35] Momtaz, H. and Jamshidi, A. (2013): Shiga toxin-producing *Escherichia coli* isolated from chicken meat in Iran: serogroups, virulence factors, and antimicrobial resistance properties. *Poult Sci*, 92(5): 1305-13.
- [36] Abdul-Raouf, U.M.; Ammar, M.S. and Beuchat, L.R. (1996): Isolation of *Escherichia coli* O157:H7 from some Egyptian foods. *Int J Food Microbiol*, 29(2-3): 423-6.
- [37] El-Safey, M. S. (2001): Search for *E. coli* O157:H7 in Egyptian foods and dairy products. Ph.D. thesis, Faculty of Science, Al-Azhar University, Cairo.
- [38] Ahmed, A.M. and Shimamoto, T. (2014): Isolation and molecular characterization of *Salmonella enterica*, *Escherichia coli* O157:H7 and *Shigella* spp. from meat and dairy products in Egypt. *Int J Food Microbiol*, 168-169: 57-62.
- [39] Li, M.C.; Wang, F. and Li, F. (2011): Identification and molecular characterization of antimicrobial-resistant shiga toxin-producing *Escherichia coli* isolated from retail meat products. *Foodborne Pathog Dis*, 8(4): 489-93.
- [40] Chinen, I.; Epszteyn, S.; Melamed, C.L.; Aguerre, L.; Martinez Espinosa, E.; Motter, M.M.; Baschkier, A.; Manfredi, E.; Miliwebsky, E. and Rivas, M. (2009): Shiga toxin-producing *Escherichia coli* O157 in beef and chicken burgers, and chicken carcasses in Buenos Aires, Argentina. *Int J Food Microbiol*, 132(2-3): 167-71.
- [41] Lee, G.Y.; Jang, H.I.; Hwang, I.G. and Rhee, M.S. (2009): Prevalence and classification of pathogenic *Escherichia coli* isolated from fresh beef, poultry, and pork in Korea. *Int J Food Microbiol*, 134(3): 196-200.
- [42] Ateba, C.N. and Mbewe, M. (2011): Detection of *Escherichia coli* O157:H7 virulence genes in isolates from beef, pork, water, human and animal species in the northwest province, South Africa: public health implications. *Res Microbiol*, 162(3): 240-8.
- [43] Ateba, C.N.; Mbewe, M. and Bezuidenhout, C.C. (2008): Prevalence of *Escherichia coli* O157 strains in cattle, pigs and humans in North West province, South Africa. *S Afr J Sci*, 104(1-2): 7-8.
- [44] Gilmour, M.W.; Chui, L.; Chiu, T.; Tracz, D.M.; Hagedorn, K.; Tschetter, L.; Tabor, H.; Ng, L.K. and Louie, M. (2009): Isolation and detection of Shiga toxin-producing *Escherichia coli* in clinical stool samples using conventional and molecular methods. *J Med Microbiol*, 58(7): 905-11.
- [45] Fey, P.D.; Wickert, R.S.; Rupp, M.E.; Safranek, T.J. and Hinrichs, S.H. (2000): Prevalence of non-O157:H7 shiga toxin-producing *Escherichia coli* in diarrheal stool samples from Nebraska. *Emerg Infect Dis*, 6(5): 530-3.
- [46] Brooks, J.T.; Sowers, E.G.; Wells, J.G.; Greene, K.D.; Griffin, P.M.; Hoekstra, R.M. and Strockbine, N.A. (2005): Non-O157 Shiga toxin-producing *Escherichia coli* infections in the United States, 1983-2002. *J Infect Dis*, 192(8): 1422-9.
- [47] Taneike, I.; Wakisaka-Saito, N.; Harada, Y.; Zhang, H. M. and Yamamoto, T. (2000): The Enterohemorrhagic *Escherichia coli* (EHEC) Hemolysin Genes of a Shiga Toxin (Stx1)- and Stx2-Producing, Serotype O128 *Escherichia coli* Strain with a Greatest Hemolytic Activity. *Acta Med Biol (Niigata)*, 48(1): 11-8.
- [48] Käppeli, U.; Hächler, H.; Giezendanner, N.; Beutin, L. and Stephan, R. (2011): Human Infections with Non-O157 Shiga Toxin-producing *Escherichia coli*, Switzerland, 2000-2009. *Emerg Infect Dis*, 17(2): 180-5.

- [49] Ateba, C.N. and Bezuidenhout, C.C. (2008): Characterisation of *Escherichia coli* O157 strains from humans, cattle and pigs in the North-West Province, South Africa. *Int J Food Microbiol*, 128(2): 181-8.
- [50] Pradel, N.; Livrelli, V.; De Champs, C.; Palcoux, J.-B.; Reynaud, A.; Scheutz, F.; Sirot, J.; Joly, B. and Forestier, C. (2000): Prevalence and Characterization of Shiga Toxin-Producing *Escherichia coli* Isolated from Cattle, Food, and Children during a One-Year Prospective Study in France. *J Clin Microbiol*, 38(3): 1023-31.
- [51] Beutin, L.; Miko, A.; Krause, G.; Pries, K.; Haby, S.; Steege, K. and Albrecht, N. (2007): Identification of human-pathogenic strains of Shiga toxin-producing *Escherichia coli* from food by a combination of serotyping and molecular typing of Shiga toxin genes. *Appl Environ Microbiol*, 73(15): 4769-75.
- [52] Pradel, N.; Bertin, Y.; Martin, C. and Livrelli, V. (2008): Molecular analysis of shiga toxin-producing *Escherichia coli* strains isolated from hemolytic-uremic syndrome patients and dairy samples in France. *Appl Environ Microbiol*, 74(7): 2118-28.
- [53] Louise, C.B. and Obrig, T.G. (1995): Specific interaction of *Escherichia coli* O157:H7-derived Shiga-like toxin II with human renal endothelial cells. *J Infect Dis*, 172(5): 1397-401.
- [54] Beutin, L.; Krause, G.; Zimmermann, S.; Kaulfuss, S. and Gleier, K. (2004): Characterization of Shiga toxin-producing *Escherichia coli* strains isolated from human patients in Germany over a 3-year period. *J Clin Microbiol*, 42(3): 1099-108.
- [55] Blanco, M.; Blanco, J.E.; Mora, A.; Dahbi, G.; Alonso, M.P.; González, E.A.; Bernárdez, M.I. and Blanco, J. (2004): Serotypes, Virulence Genes, and Intimin Types of Shiga Toxin (Verotoxin)-Producing *Escherichia coli* Isolates from Cattle in Spain and Identification of a New Intimin Variant Gene (eae-xi). *J Clin Microbiol*, 42(2): 645-51.
- [56] Paton, J.C. and Paton, A.W. (1998): Pathogenesis and diagnosis of Shiga toxin-producing *Escherichia coli* infections. *Clin Microbiol Rev*, 11(3): 450-79.
- [57] Fernandez, D.; Rodriguez, E.M.; Arroyo, G.H.; Padola, N.L. and Parma, A.E. (2009): Seasonal variation of Shiga toxin-encoding genes (stx) and detection of *E. coli* O157 in dairy cattle from Argentina. *J Appl Microbiol*, 106(4): 1260-7.
- [58] Padola, N.L.; Sanz, M.E.; Blanco, J.E.; Blanco, M.; Blanco, J.; Etcheverria, A.I.; Arroyo, G.H.; Usera, M.A. and Parma, A.E. (2004): Serotypes and virulence genes of bovine Shigatoxigenic *Escherichia coli* (STEC) isolated from a feedlot in Argentina. *Vet Microbiol*, 100(1-2): 3-9.
- [59] Barlow, R.S.; Gobius, K.S. and Desmarchelier, P.M. (2006): Shiga toxin-producing *Escherichia coli* in ground beef and lamb cuts: Results of a one-year study. *Int J Food Microbiol*, 111(1): 1-5.
- [60] Ojo, O.E.; Ajuwape, A.T.; Otesile, E.B.; Owoade, A.A.; Oyekunle, M.A. and Adetosoye, A.I. (2010): Potentially zoonotic shiga toxin-producing *Escherichia coli* serogroups in the faeces and meat of food-producing animals in Ibadan, Nigeria. *Int J Food Microbiol*, 142(1-2): 214-21.
- [61] Boerlin, P.; McEwen, S.A.; Boerlin-Petzold, F.; Wilson, J.B.; Johnson, R.P. and Gyles, C.L. (1999): Associations between virulence factors of Shiga toxin-producing *Escherichia coli* and disease in humans. *J Clin Microbiol*, 37(3): 497-503.
- [62] Bonnet, R.; Souweine, B.; Gauthier, G.; Rich, C.; Livrelli, V.; Sirot, J.; Joly, B. and Forestier, C. (1998): Non-O157:H7 Stx2-producing *Escherichia coli* strains associated with sporadic cases of hemolytic-uremic syndrome in adults. *J Clin Microbiol*, 36(6): 1777-80.
- [63] Suthienkul, O.; Brown, J.E. and Seriwatana, J. (1990): Shiga-like toxin-producing *Escherichia coli* in retail markets and cattle in Thailand. *Appl Environ Microbiol*, 56: 1135-9.

[64] Lukášová, J.; Abraham, B. and Cupáková, S. (2004): Occurrence of *Escherichia coli* O157 in raw material and food in Czech Republic. J Vet Med B Infect Dis Vet Public Health, 51(2): 77-81.

*coli* O157:H7 isolates from different sources in the North-West Province, South Africa, using enterobacterial repetitive intergenic consensus PCR analysis. Int J Mol Sci, 15(6): 9735-47.

[65] Ateba, C.N. and Mbewe, M. (2014): Genotypic characterization of *Escherichia*

### المخلص العربي

التوصيف الجزيئي للإيشيريشيا كولاي O157:H7 والإيشيريشيا كولاي الغير O157 المنتجة لسموم الشيجا من اللحوم المسوقة ومن الإنسان

هبة أحمد عبدالله<sup>1</sup>، إيوان ماكلويد<sup>2</sup>، رشا محمد البيومي<sup>3</sup>، رشا محسن<sup>4</sup>، أروى نصار<sup>4</sup>

<sup>1</sup>قسم الأمراض المشتركة- كلية الطب البيطري- جامعة الزقازيق

<sup>2</sup>قسم طب المسار والعدوي، كلية العلوم الطبية الحيوية كلية الطب والطب البيطري، جامعة ادنبره

<sup>3</sup>قسم مراقبة الأغذية- كلية الطب البيطري- جامعة الزقازيق

<sup>4</sup>معهد بحوث صحة الحيوان- فرع المنصورة

تم جمع 550 عينة من اللحوم (300 من لحم البقر المفروم و 250 من لحم الدجاج) المسوقة في مدينة الزقازيق، فضلا عن 150 عينة من البراز البشري لفحصها بكتيريولوجياً لمعرفة مدى تواجد ميكروب الإيشيريشيا كولاي بها. أوضحت النتائج ان نسبة الإيشيريشيا كولاي O157: H7 و غير O157 كانت معزولة بنسبتي 1.7% و 2.3% من لحم البقر المفروم، بينما تم تحديدها في 0.8% و 2% من عينات لحم الدجاج. وبالإضافة إلى ذلك، تم عزلها من مسحات البراز البشري بمعدل 0.7% و 2.7% على التوالي. تم أيضا تحديد بعض الأنماط المصلية الأخرى مثل: O111: H8 (25%) ، O26: H11 (20.8%)، O55: H7 (16.7%) و O113: H21 (4.2%) في العينات التي تم فحصها. وقد تم التعرف على الجينات المرتبطة بالضراوة في الأنماط المصلية للإيشيريشيا كولاي ومنها *stx1* و *stx2* في 16.7% و 62.5% من العزلات، في حين تم تحديد جينات *hlyA* و *eaeA* في 50% و 70.8% من العزلات على التوالي. تم استخدام بصمات ERIC-PCR للكشف عن الأنماط الجينية للإيشيريشيا كولاي O157: H7 من مصادر مختلفة ومع ذلك، تم تجميع العزلات البشرية ولحم البقر المفروم في نفس المجموعة مما يشير إلى احتمال إنتقال العدوى من لحوم البقر الملوثة إلى المستهلكين. وأكدت هذه الدراسة ERIC-PCR أداة متميزة وفعالة لتعقب مصادر العدوى البكتيرية. ويعتبر التثقيف الصحي العام وتطبيق تدابير صحية صارمة أثناء ذبح اللحوم ونقلها وإعدادها أمرا ضروريا للحد من خطر التلوث ونقل العدوى إلى المستهلكين.