

Thesis submitted for the degree of Doctor of Philosophy in the History of Art
University of East Anglia
2016

PETRIFIED PASSIONS
BODILY RHETORIC IN ARCHITECTURAL SCULPTURE,
c.1100–c.1270

Agata Anna Gomółka



Volume II: Illustrations

This copy of the thesis has been supplied on condition that anyone who consults it is understood to recognise that its copyright rests with the author and that use of any information derived there-from must be in accordance with current UK Copyright Law. In addition, any quotation or extract must include full attribution.

VOLUME II

CONTENTS

LIST OF ILLUSTRATIONS	2
DIAGRAMS	10
PLATES	12
FIGURES	
Introduction	18
Chapter I	20
Chapter II	49
Chapter III	81
Chapter IV	99

LIST OF ILLUSTRATIONS

(All uncredited photographs are my own)

FRONTISPIECES

- Volume I Conques (Aveyron), St Foy, west portal, tympanum, detail (photo Lucas Rols).
Volume II Reims, Palais du Tau. View of voussoir with the scene of expulsion from
paradise, formerly north transept of Notre-Dame, Reims (Lucas Rols).

PLATES

1. Conques, St Foy, west portal, tympanum (Chris Henige).
2. Autun, Saint-Lazare, west portal, tympanum (Chris Henige).
3. Moissac, Saint-Pierre, south porch, demon and woman with serpents.
4. Paris, Musée de Cluny, Adam, formerly south transept of Notre-Dame, Paris.
5. Chartres, Notre-Dame, north transept, right portal, tympanum (Chris Henige).
6. Reims, Notre-Dame, north transept, central portal, tympanum (Chris Henige).

FIGURES

Introduction

1. Santiago de Compostela, north transept interior, capital.
2. Santiago de Compostela, north transept interior, capital.
3. Ida and Herimann cross, Erzbischofliches Diözesanmuseum, Cologne (Web).
4. Strasbourg, Notre-Dame, west façade, right portal, Deceiver (Web).

Chapter I

5. Detail of Plate 2, Virgin.
6. Autun, nave capital, Daniel (Web).
7. Autun, choir capital, Christ (after Grivot and Zarnecki 1961).
8. Conques, north transept interior, Annunciation.
9. Detail of Plate 2, angel (after Grivot and Zarnecki 1961).
10. Detail of Plate 2, Christ (after Grivot and Zarnecki 1961).
11. Detail of Plate 2, heavenly side (Chris Henige).
12. Detail of Plate 2, St Peter (after Grivot and Zarnecki 1961).
13. Detail of Plate 2, hell's side (Chris Henige).
14. Detail of Plate 2, St Michael.
15. Detail of Plate 1, angels with olifants.
16. Detail of Plate 1, wooden insertions.
17. Detail of Plate 1, Christ.
18. Detail of Plate 1, militant angels.
19. Detail of Plate 1, procession of saints.
20. Detail of Plate 1, procession of saints.
21. Detail of Plate 1, saints.
22. Detail of Plate 1, demon crossing compartments.
23. Detail of Plate 1, heavenly lintel.
24. Detail of Plate 1, hell's lintel.
25. Detail of Plate 1, the antechambers.
26. Detail of Plate 2, heavenly lintel.
27. Detail of Plate 2, hell's lintel.
28. Beaulieu sur Dordogne, Saint-Pierre, south porch, atlante.
29. Detail of Plate 2, lintel, woman with cloak.
30. Detail of Plate 2, lintel, bent necks.
31. Detail of Plate 2, lintel, Adam and Eve.
32. Autun, apse capital, Constantine?
33. Autun, nave capital, demon with pincers.
34. Autun, nave capital, Simon Magus.
35. Autun, nave capital, St Stephen.
36. Autun, north portal, capital, Ishmael.
37. Autun, north portal, capital, St Martin.
38. Autun, Musée Rolin, Eve, formerly north portal of St Lazare.
39. Detail of Plate 1, Christ (Lucas Rols).

40. Detail of Plate 1, infernal spaces.
41. Detail of Plate 1 clouds as transitional elements.
42. Detail of Plate 1, Satan.
43. Detail of Plate 1, Pride.
44. Detail of Plate 1, Avarice.
45. Detail of Plate 1, Monier.
46. Detail of Plate 1, upper section.
47. Detail of Plate 1, procession of sinners.
48. Moissac, south porch, tympanum.
49. Vézelay, narthex, tympanum (Web).
50. Saint-Eptade de Cervon, west tympanum, Christ (Web).
51. Detail of Plate 2, scales.
52. Detail of Plate 2, herringbone pattern.
53. Detail of Plate 2, demons' feet overlapping.
54. Detail of Plate 1, the Virgin photographed from above the water-source.
55. Detail of Plate 1, view under lintel.
56. Detail of Plate 1, Christ's pelvis, low view.
57. Detail of Plate 1, heavenly procession, view from below.
58. Detail of Plate 1, militant angels, view from below.
59. Detail of Plate 1, hell's section, shadowy recesses in upper parts.
60. Detail of Plate 1, relief landscape.
61. Santiago de Compostela, Portico de la Gloria (Web).
62. Reims, north transept, left portal, tympanum.

Chapter II

63. Detail of Plate 1, Christ (Web).
64. Conques, treasury, reliquary statue of St Foy.
65. Detail of Plate 1, Virgin's face.
66. Detail of Plate 1, Satan's face.
67. Detail of Plate 1, Satan's body (Web).
68. Moissac, south porch.
69. Moissac, south porch, detail of torment of woman with serpents.
70. Moissac, south porch, detail of woman with serpents.
71. Moissac, south porch, detail of Virgin of Annunciation.
72. Moissac, south porch, Visitation, copy (original in cloister museum), detail.
73. Santiago de Compostela, Portico de la Gloria, Christ (Web).
74. Bourges, Saint-Étienne, west front, central portal, Christ (Web).
75. Amiens, Notre-Dame, west front, central portal, Christ.
76. Roman bronze figurine of Jupiter, found in near Pompeii (Web).
77. Reims, north transept, left portal, Beau Dieu.
78. Reims, north transept, left portal, Beau Dieu (Web).
79. Rome, Conservatori, Roman head of a commander (after Richter 1984)
80. Santiago de Compostela, Portico de la Gloria, Christ (Web).
81. Santiago de Compostela, Portico de la Gloria, St James (Web).
82. Santiago de Compostela, Portico de la Gloria, St James and Christ in perspective.
83. Chartres, west facade, central portal, Christ.
84. Chartres, west facade central portal, wrinkled apostle.
85. Bourges, west front, central portal, Abraham (Web).
86. Bourges, west front, central portal, elect (Web).
87. Bourges, west front, central portal, damned (Chris Henige).
88. Detail of Plate 2, damned.
89. Detail of Plate 1, damned.
90. Detail of Plate 2, facial creases.
91. Detail of Plate 2, facial creases.
92. Detail of Plate 2 (Chris Henige).
93. Moissac, south porch, tormenting demon.
94. Moissac, south porch, Visitation, copy (original in cloister museum).
95. Moissac, south porch, torments of avaricious man and woman with serpents.

96. Conques, north transept interior, Virgin of Annunciation.
97. Detail of Plate 1, Christ.
98. Detail of Plate 1, Virgin.
99. Detail of Plate 1, nude sinners.
100. Detail of Plate 1, nude sinners.
101. Detail of Plate 1, faces of the elect.
102. Detail of Plate 1, faces of the damned.
103. Santiago de Compostela, Portico de la Gloria, angel.
104. Santiago de Compostela, Portico de la Gloria, angel holding souls (Jenny Alexander)
105. Santiago de Compostela, Portico de la Gloria, demons.
106. Santiago de Compostela, Portico de la Gloria, detail of Christ.
107. Amiens, west front, central portal, damned (Chris Henige).
108. Bourges, west front, central portal, damned (Chris Henige).
109. Reims, north transept, left portal, damned (Web).
110. Moissac, south porch, the woman with serpents.
111. Venus pudica, Capitoline Museum (Web).
112. Vézelay, St Marie-Madeleine, nave capital, Luxuria.
113. Tavant, St Nicholas, Luxuria? (Web).
114. Paris, Note Dame, west façade, trumeau.
115. Detail of Plate 4.
116. Detail of Plate 4.
117. Detail of Plate 4.
118. Clermont-Ferrand, Notre-Dame du Port, ambulatory capital, Adam (Web).
119. Bamberg, St. Peter and St. George, Adam portal (Web).
120. Reims, north transept, left portal, nudes (Web).
121. Amiens, west façade, central portal, nudes (Chris Henige).
122. Apollo Belvedere, Vatican Museums (Web).
123. Reims, west façade, central portal, Virgin of Visitation.
124. Face of Venus de Milo, Musée du Louvre, Paris (Web).
125. Reims, Notre Dame, angel on the chevet.

Chapter III

126. Anzy-le Duc, Notre-Dame, south tympanum (Web).
127. Detail of fig. 126 (Web).
128. Neuilly-en-Donjon, St Mary-Magdalen, west tympanum (Web).
129. Detail of fig. 128 (Web).
130. Cluny, capital of the Fall (Web).
131. Sant Pere de Rodés, capital seen in cloister (Web).
132. Paris, Musée de Cluny, capital of the Fall, formerly Sant Pere de Rodés.
133. Paris, Musée de Cluny, capital of the Fall, formerly Sant Pere de Rodés, creation of Eve.
134. Paris, Musée de Cluny, capital of the Fall, formerly Sant Pere de Rodés, original sin.
135. Paris, Musée de Cluny, capital of the Fall, formerly Sant Pere de Rodés, accusation.
136. Paris, Musée de Cluny, capital of the Fall, formerly Sant Pere de Rodés, labours of Adam and Eve.
137. Conques, interior, capital with angel Annunciate (Web).
138. Conques, interior, capital with arrest of St Foy (Web).
139. Clermont-Ferrand, ambulatory capital, angel (Web).
140. Clermont-Ferrand, ambulatory capital, original sin and hiding (Web).
141. Clermont-Ferrand, ambulatory capital, accusation (Web).
142. Clermont-Ferrand, ambulatory capital, expulsion (Web).
143. Chartres, Portail Royal, capitals.
144. Chartres, north transept, voussoirs with the scenes of the Fall.
145. Reims, north transept, voussoirs with the scenes of the Fall.
146. Reims, Palais du Tau. View of voussoir with Adam's labours (Lucas Rols).
147. Reims, Palais du Tau. View of voussoir with original sin (Lucas Rols).
148. Chartres, north transept, voussoirs with original sin (Web).
149. Reims, Palais du Tau. Voussoir with original sin (Paradoxplace).
150. Reims, Palais du Tau. Voussoir with Adam and Eve hiding.
151. Chartres, north transept, voussoirs with Adam and Eve hiding (Web).
152. Chartres, north transept, voussoirs with Adam and Eve's condemnation (Web).
153. Chartres, north transept, voussoirs with Adam labouring.
154. Reims, Palais du Tau. Voussoir with expulsion from paradise (Paradoxplace).
155. Reims, Palais du Tau. Voussoir with creation of Eve.

156. Reims, Palais du Tau. View of voussoir with Eve's labours.
157. Reims, Palais du Tau. View of voussoir with labours of the year, with digging Adam in the background.
158. Chartres, south nave window of the Good Samaritan, detail of scenes of the Fall (Web).
159. Chartres, south nave window of the Good Samaritan, detail of spinning Eve and Adam digging (Web).
160. Reims, north transept, rose window, detail (Web).
161. Hildesheim, St. Mariä Himmelfahrt, bronze doors of Bernward, creation of Eve (Web).
162. Hildesheim, St. Mariä Himmelfahrt, bronze doors of Bernward, Adam and Eve meeting (Web).
163. Hildesheim, St. Mariä Himmelfahrt, bronze doors of Bernward, temptation and original sin (Web).
164. Hildesheim, St. Mariä Himmelfahrt, bronze doors of Bernward, expulsion from paradise (Web).

Chapter IV

165. Vatican Museums, sarcophagus of Junius Bassus, Job (Web).
166. Venice, Biblioteca Nazionale Marciana, Codex Gr. 538, fol.23, Job (Web).
167. Mount Sinai, Saint Catherine's Monastery, Codex gr.3, fol. unknown, Job (Web).
168. Toulouse, Musée des Augustins, formerly La Daurade capital with story of Job.
169. Pamplona, Santa María la Real, capital in cathedral museum, story of Job (Web).
170. Vienne, Saint André-le-Bas.nave capital, Job (Web).
171. Avignon, museum, capital with Job (Web).
172. Paris, Notre-Dame, west façade, central portal, Job.
173. Detail of Plate 6, Job (Marburg).
174. Detail of Plate 6, damaged scene of expulsion of fire demons from Reims (Marburg).
175. Detail of Plate 6, resurrected girl of Toulouse (Chris Henige).
176. Dialogus de laudibus sanctae crucis, Bayerische Staatsbibliothek (München), Cod. lat. 14159 (Web).
177. Vatopedi Manuscript nr. 590 (Web).
178. Bible Moralisée, Vienna, Österreichische Nationalbibliothek, Codex Vindobonensis 1179 (Web).
179. Moissac, south porch, Lazarus and Dives.
180. Detail of Plate 5 (Chris Henige).
181. Detail of Plate 6.
182. BnF MS lat. 15675, fol. 3r, detail (Web).
183. BnF MS lat. 15675, fol. 3v, detail (Web).
184. BnF MS lat. 15675, fol. 4r, detail (Web).
185. BnF MS lat. 15675, fol. 4v, detail (Web).
186. BnF MS lat. 15675, fol. 5r, detail (Web).
187. BnF MS lat. 15675, fol. 5v, detail (Web).
188. Vatican MS gr. 1231, Job attacked by monster (Web).
189. London, British Museum, Jonah sarcophagus, detail of reclining Jonah (Web).
190. Detail of Plate 5 (Chris Henige).
191. Detail of Plate 6, Job's friends.

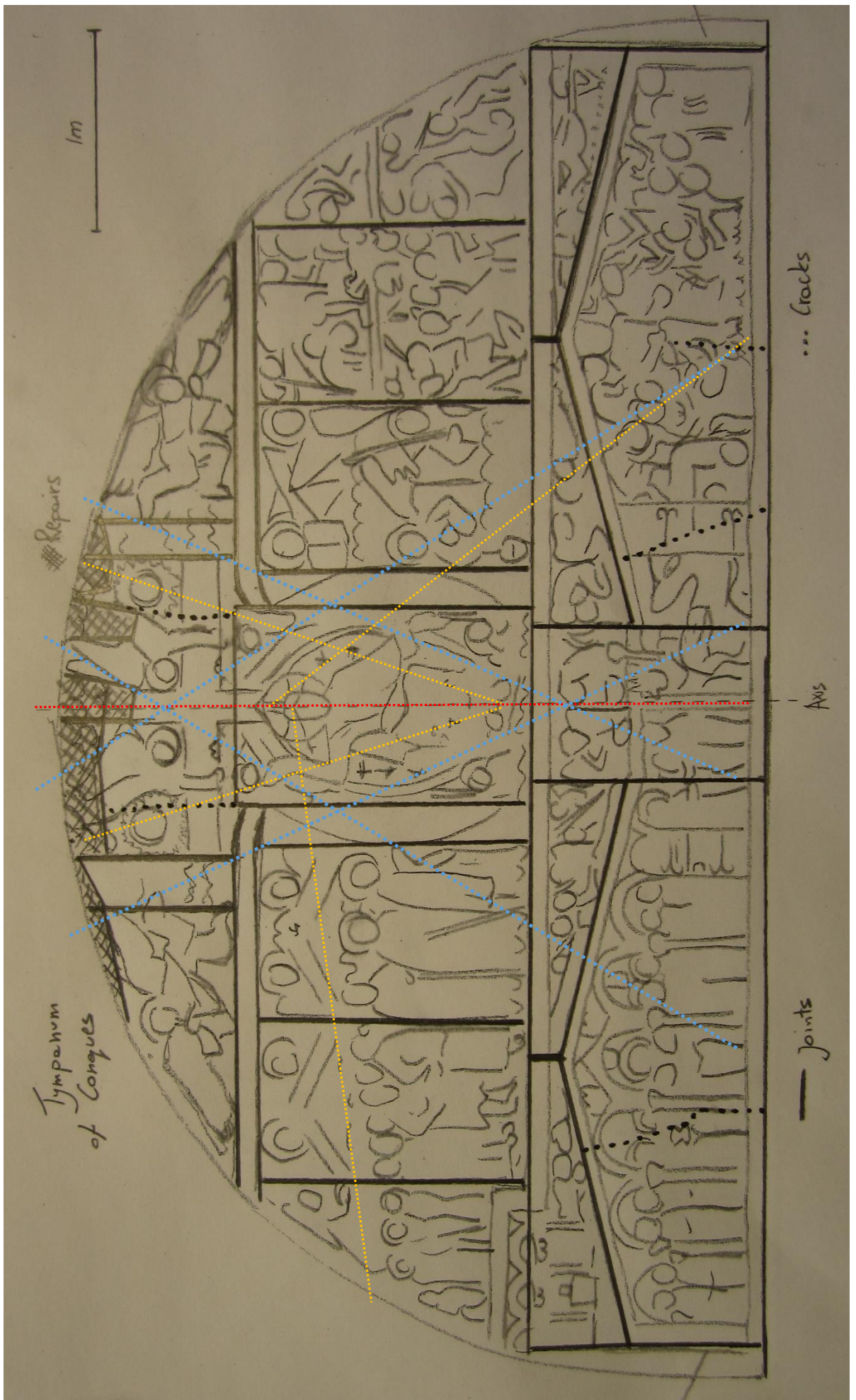


Diagram 1

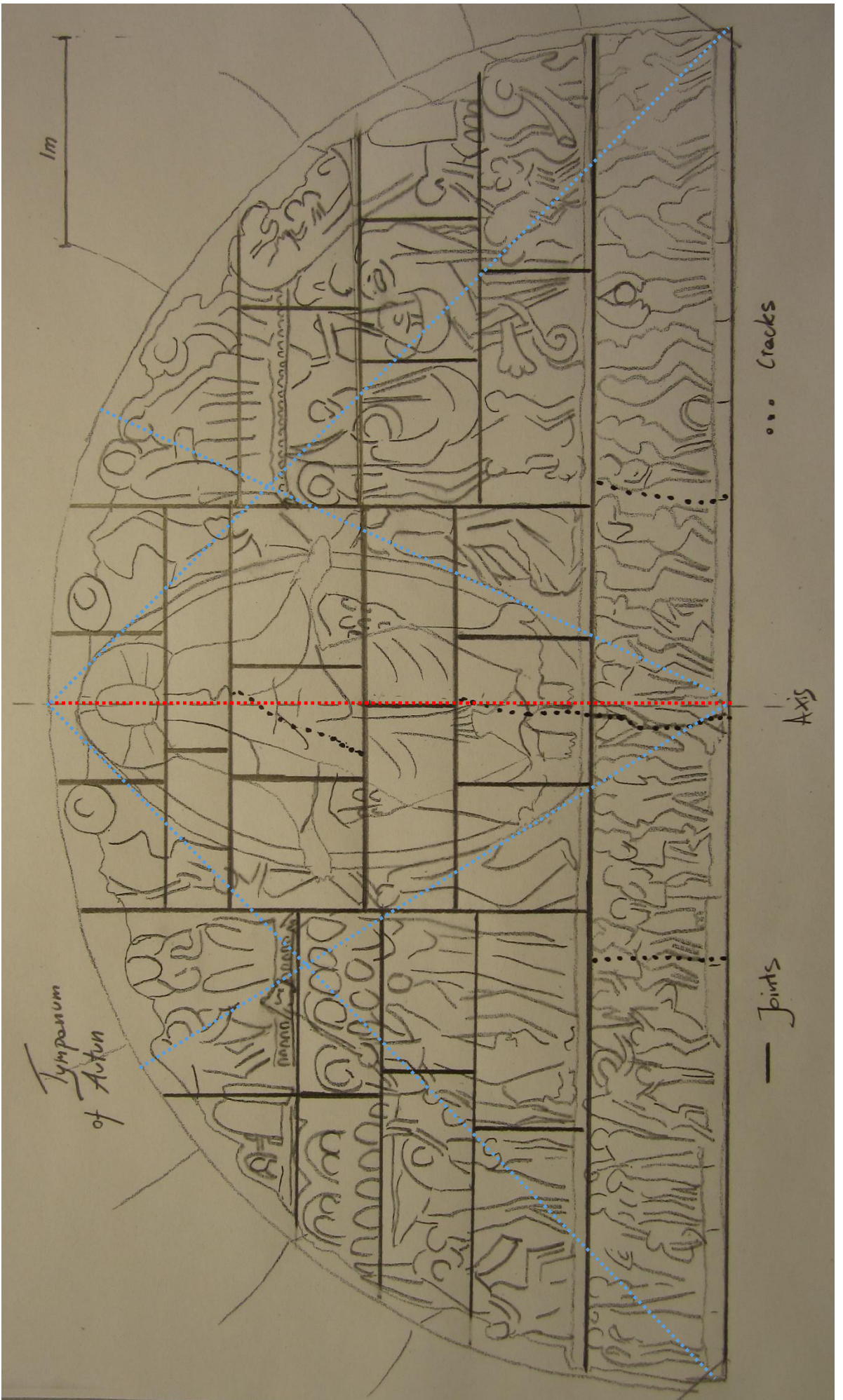


Diagram 2



Plate 1

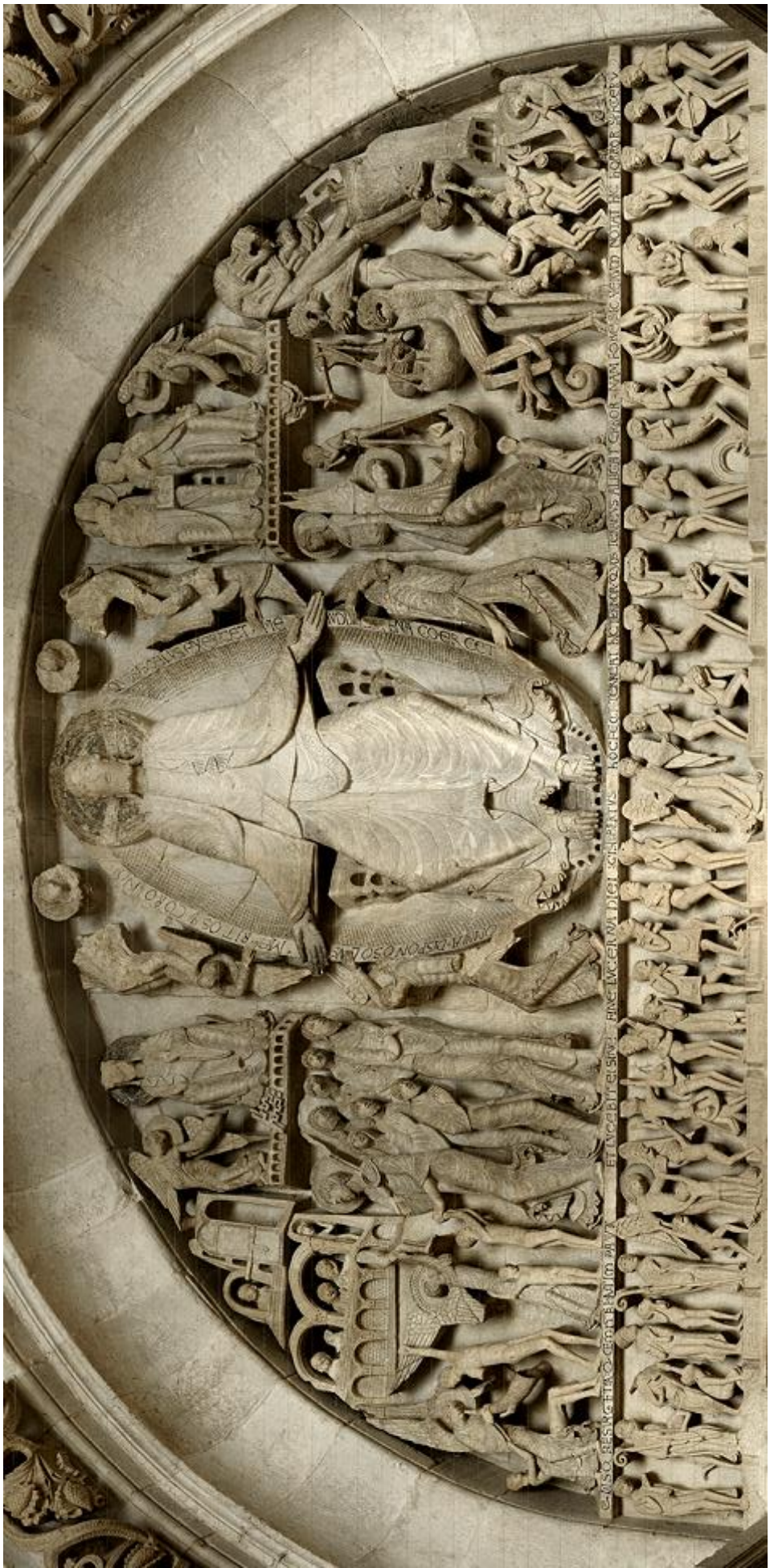


Plate 2



Plate 3

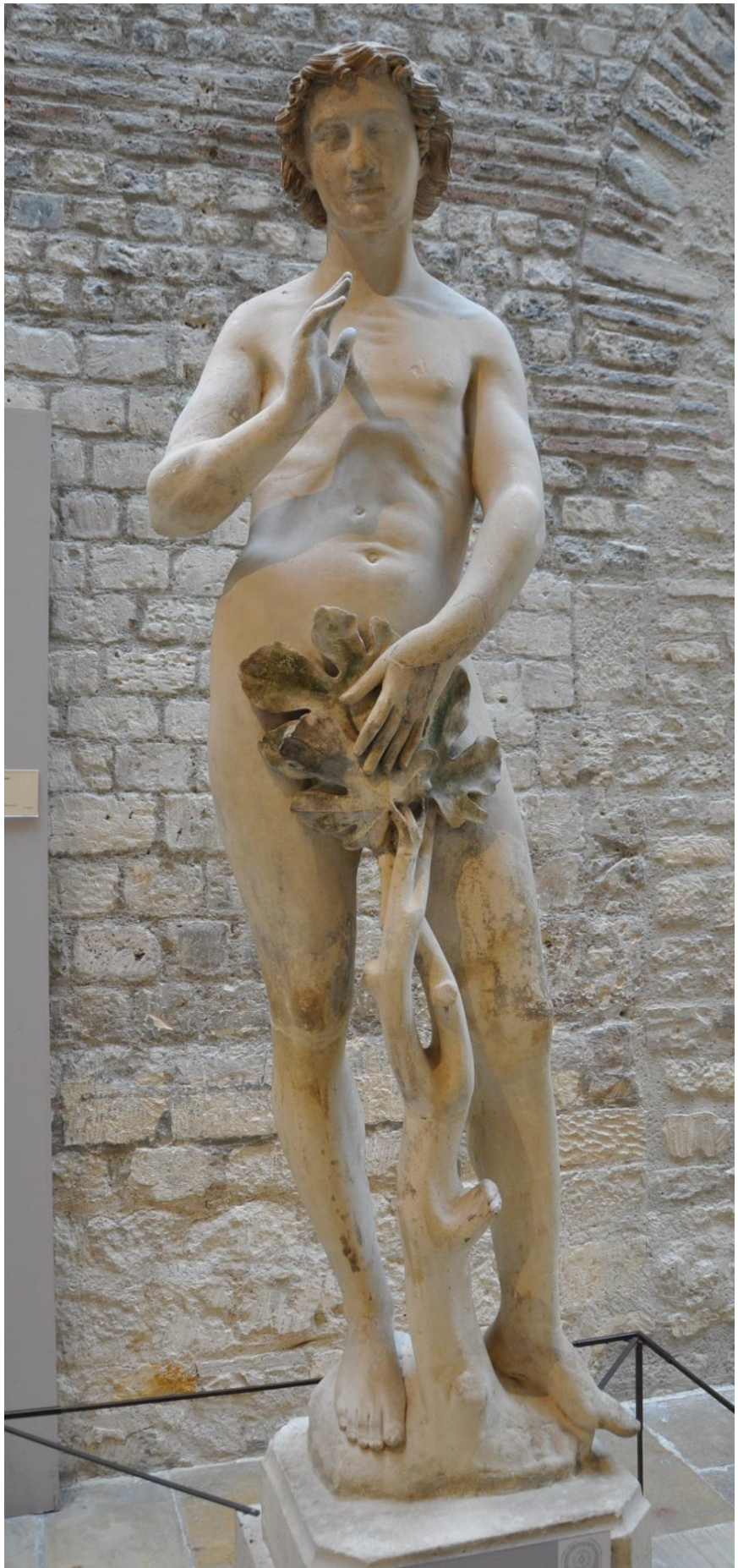


Plate 4



Plate 5



Plate 6

Figure 1



Figure 2



Figure 3



Figure 4



Figure 5



Figure 6



Figure 7



Figure 8

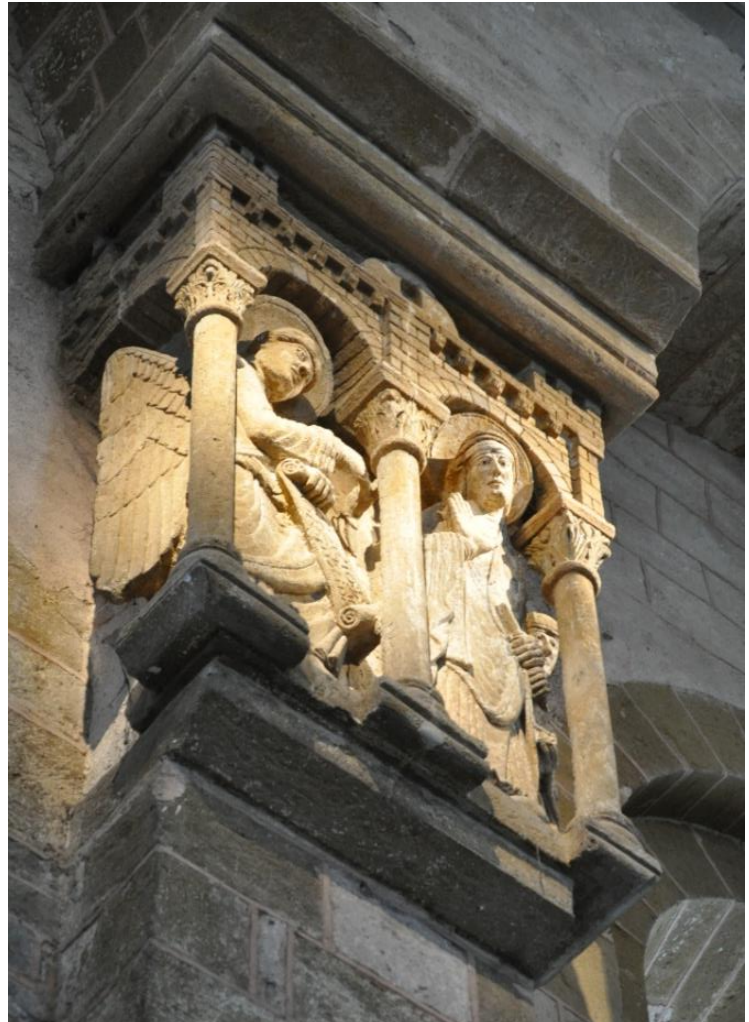


Figure 9



Figure 10



Figure 11

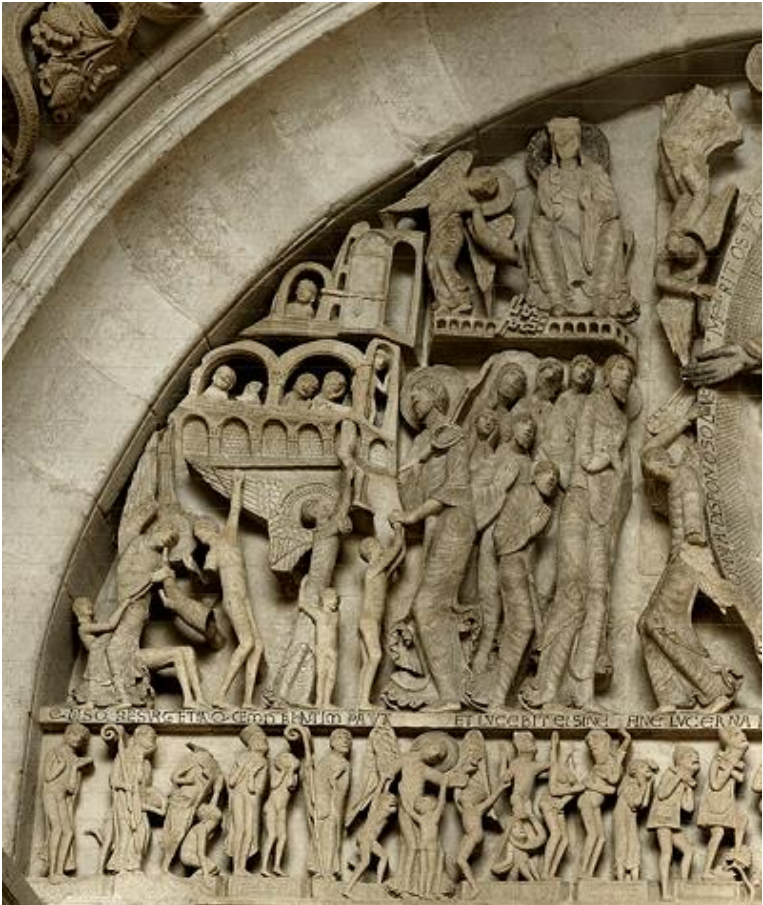


Figure 12



Figure 13

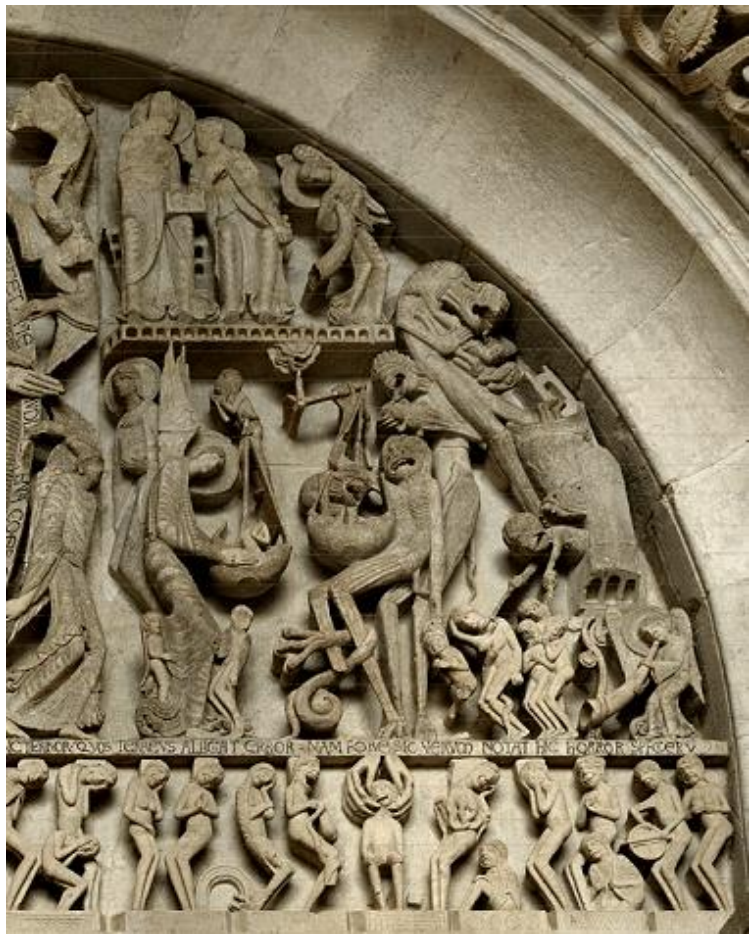


Figure 14



Figure 15



Figure 16



Figure 17



Figure 18



Figure 19



Figure 20



Figure 21



Figure 22

Figure 23



Figure 24



Figure 25





Figure 26



Figure 27

Figure 28



Figure 29



Figure 30



Figure 31



Figure 32



Figure 33



Figure 34



Figure 35



Figure 36



Figure 37





Figure 38

Figure 39



Figure 40



Figure 41



Figure 42



Figure 43



Figure 44



Figure 45



Figure 46



Figure 47



Figure 48

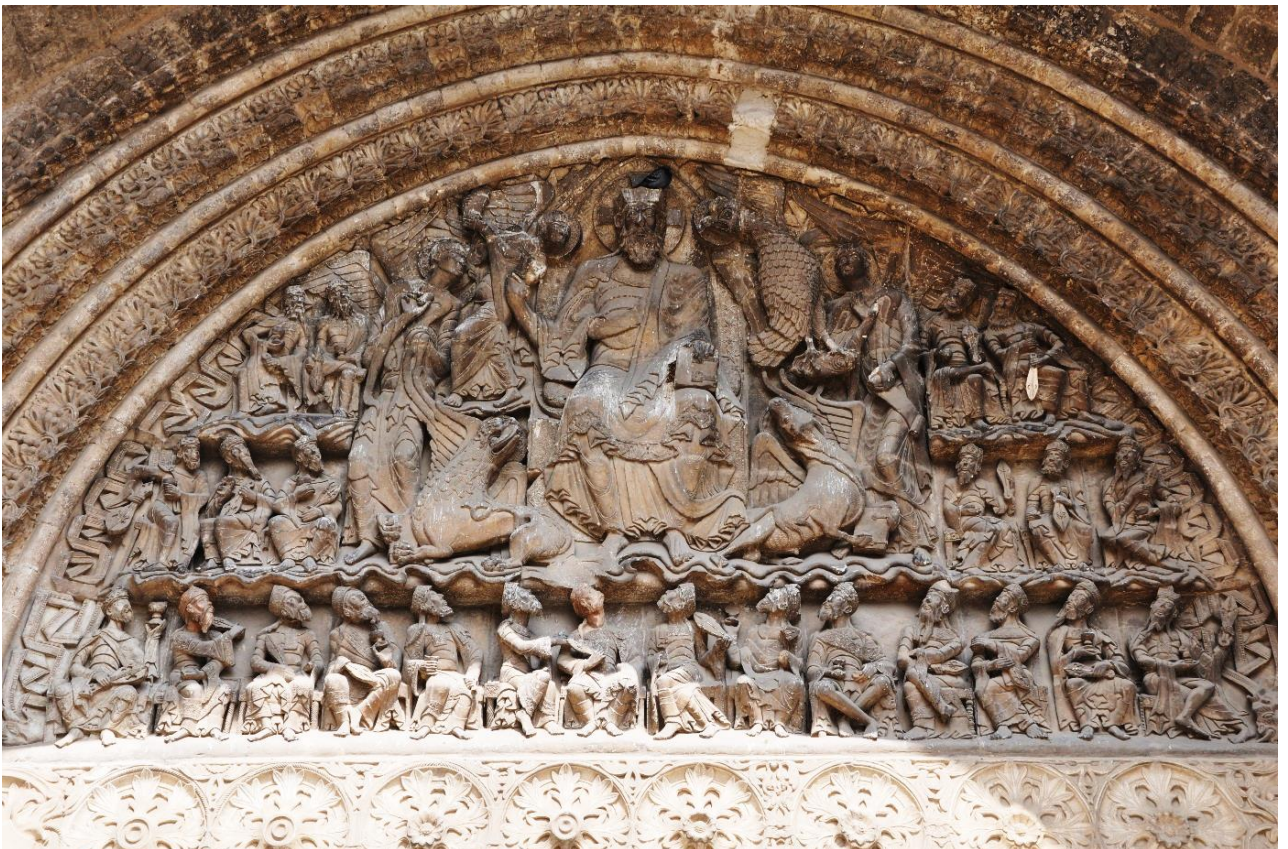


Figure 49

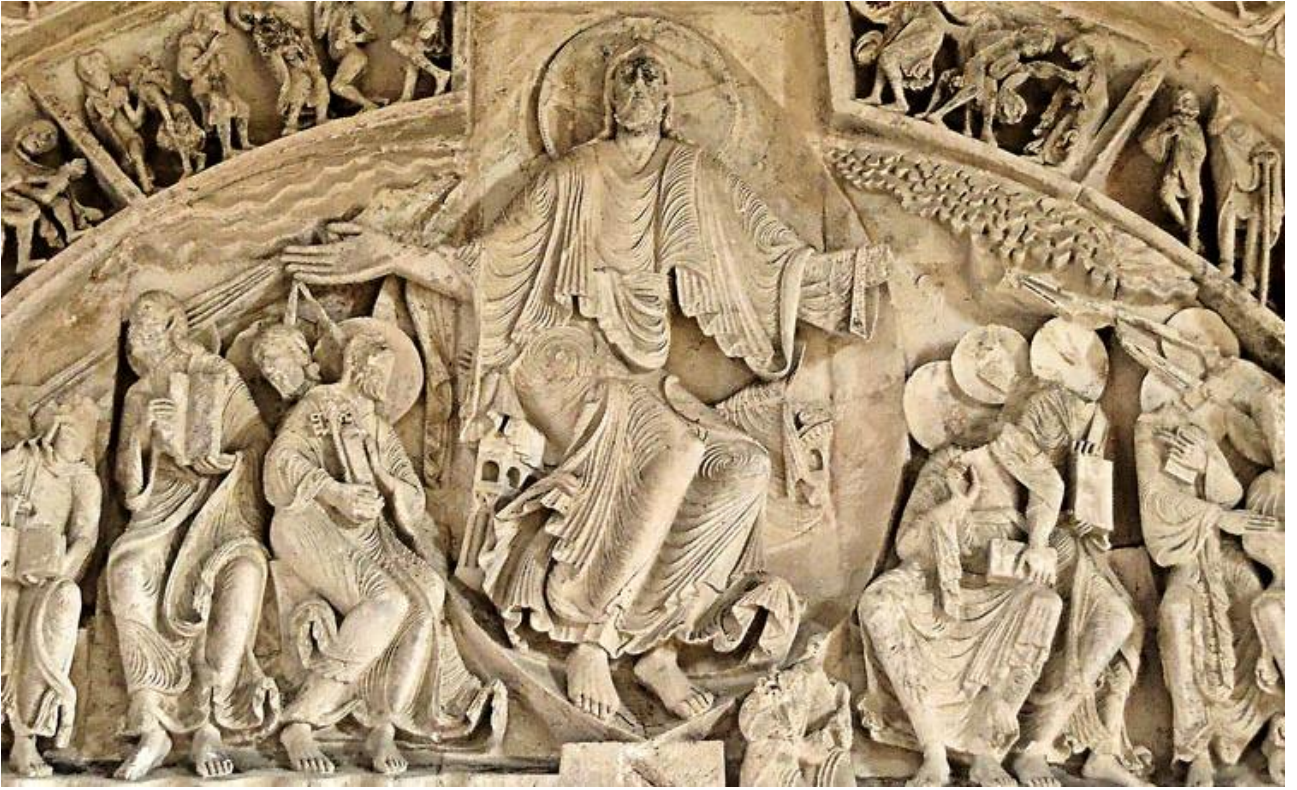


Figure 50



Figure 51

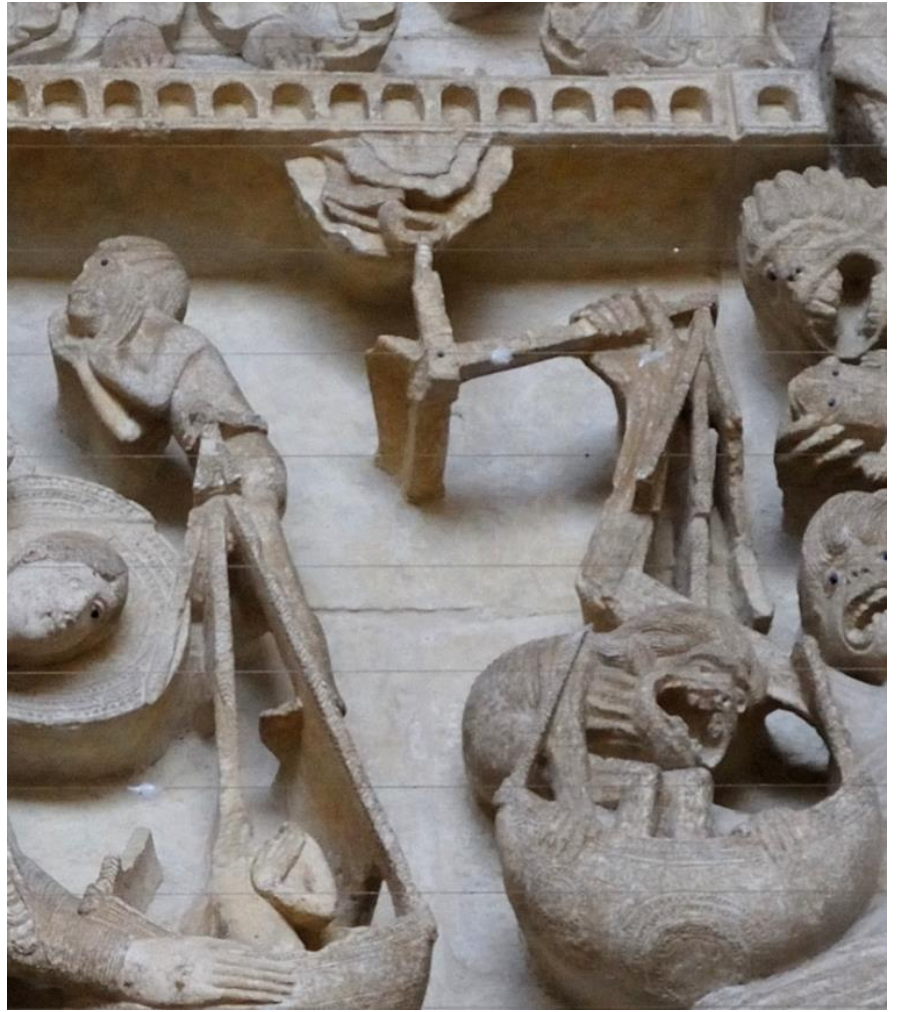


Figure 52

Figure 53



Figure 54



Figure 55



Figure 56



Figure 57



Figure 58



Figure 59



Figure 60



Figure 61



Figure 62



Figure 63



Figure 64

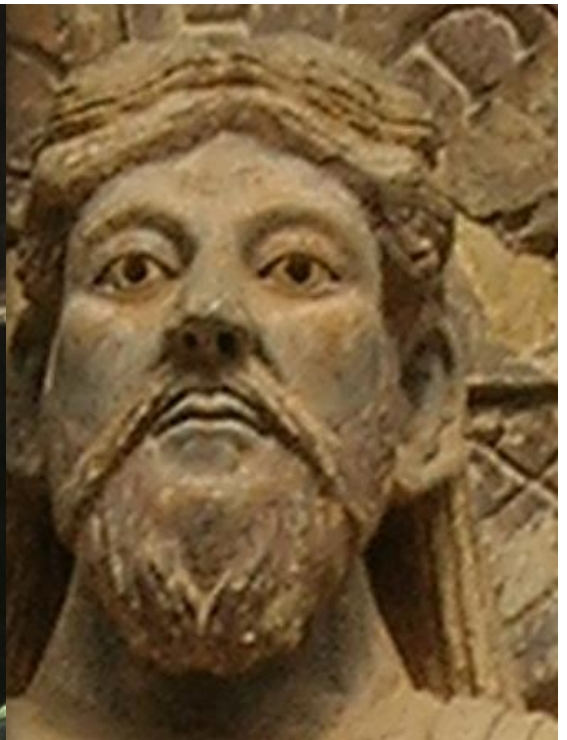


Figure 65

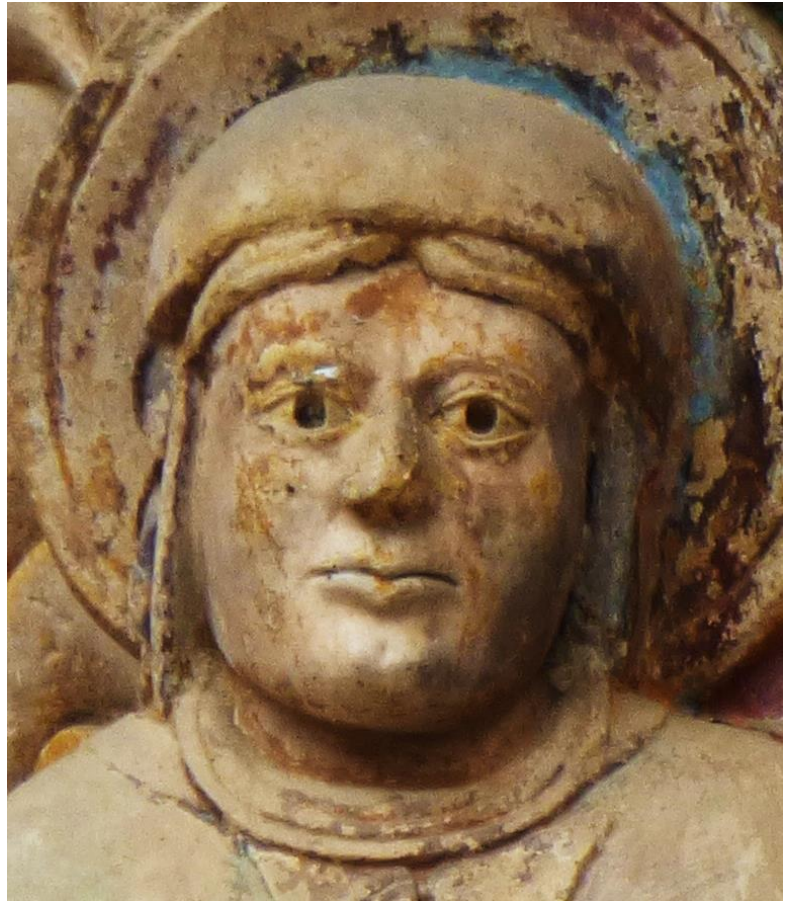


Figure 66





Figure 68



Figure 69





Figure 70

Figure 71



Figure 72





Figure 73

Figure 74



Figure 75



Figure 76

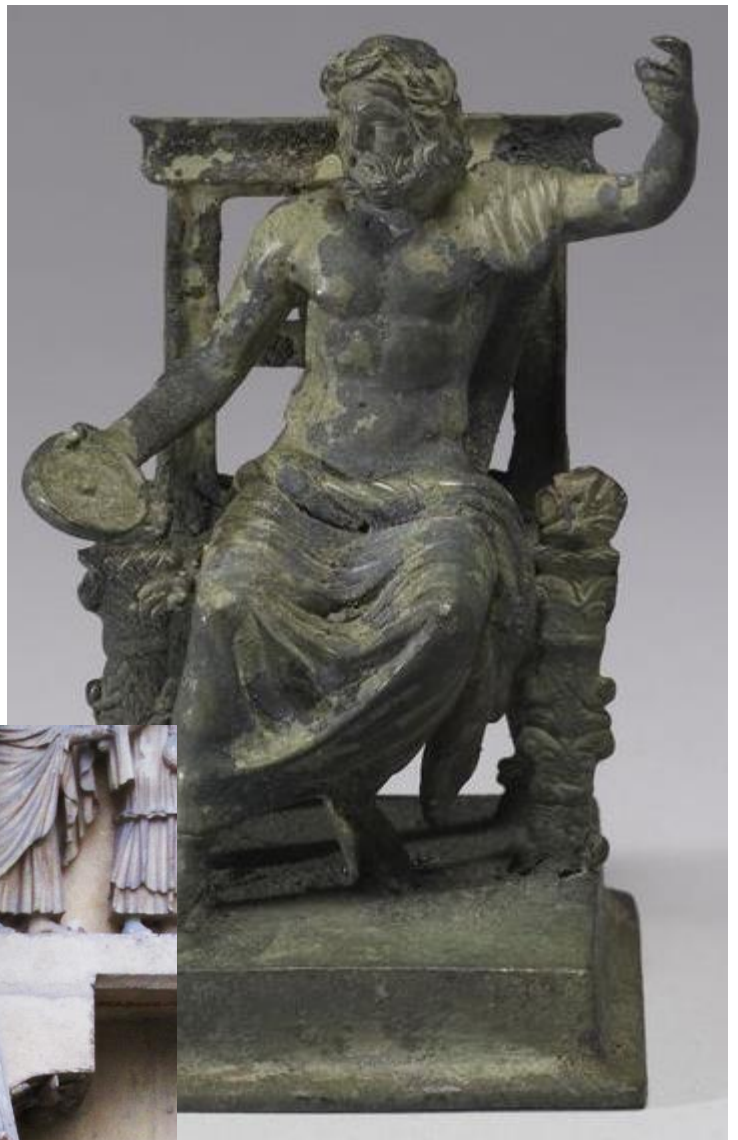


Figure 77

Figure 78

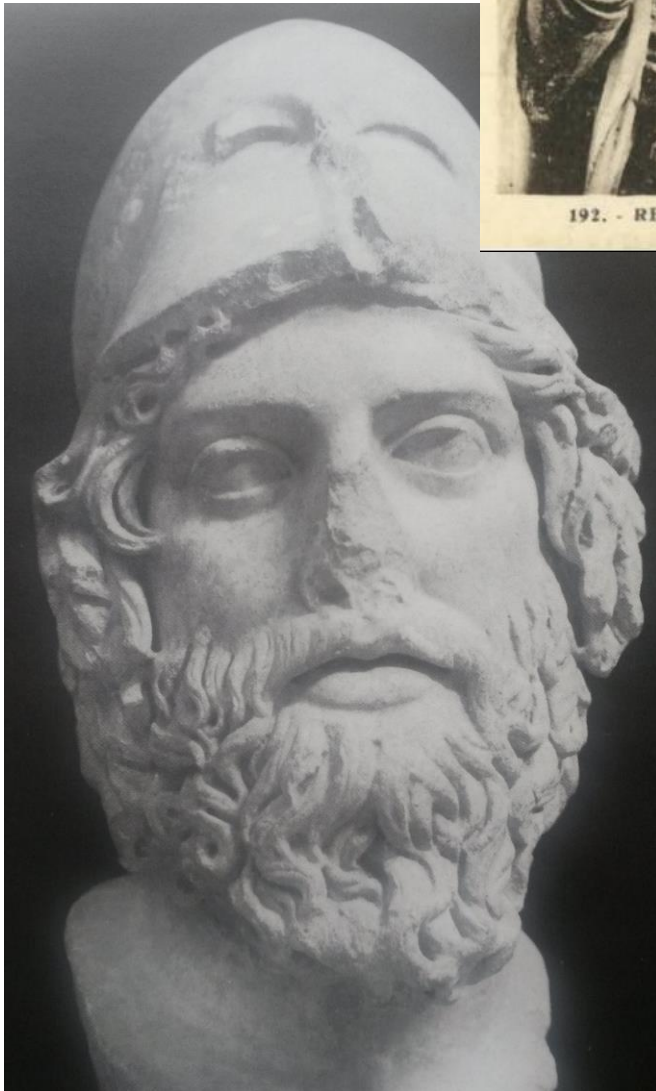
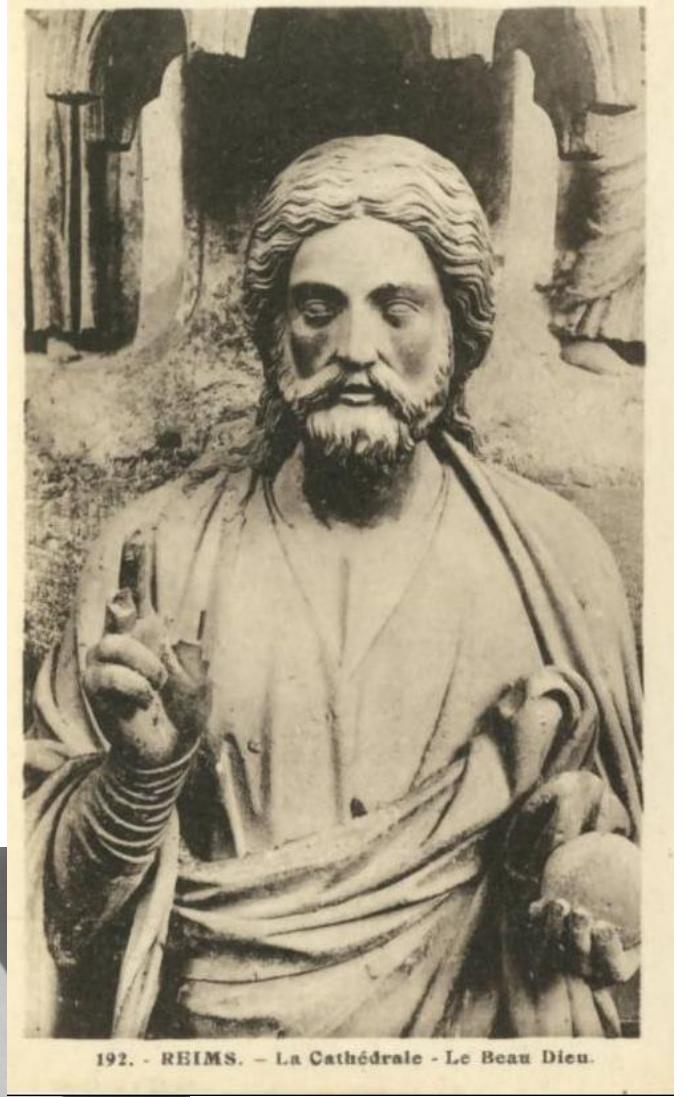


Figure 79

Figure 80

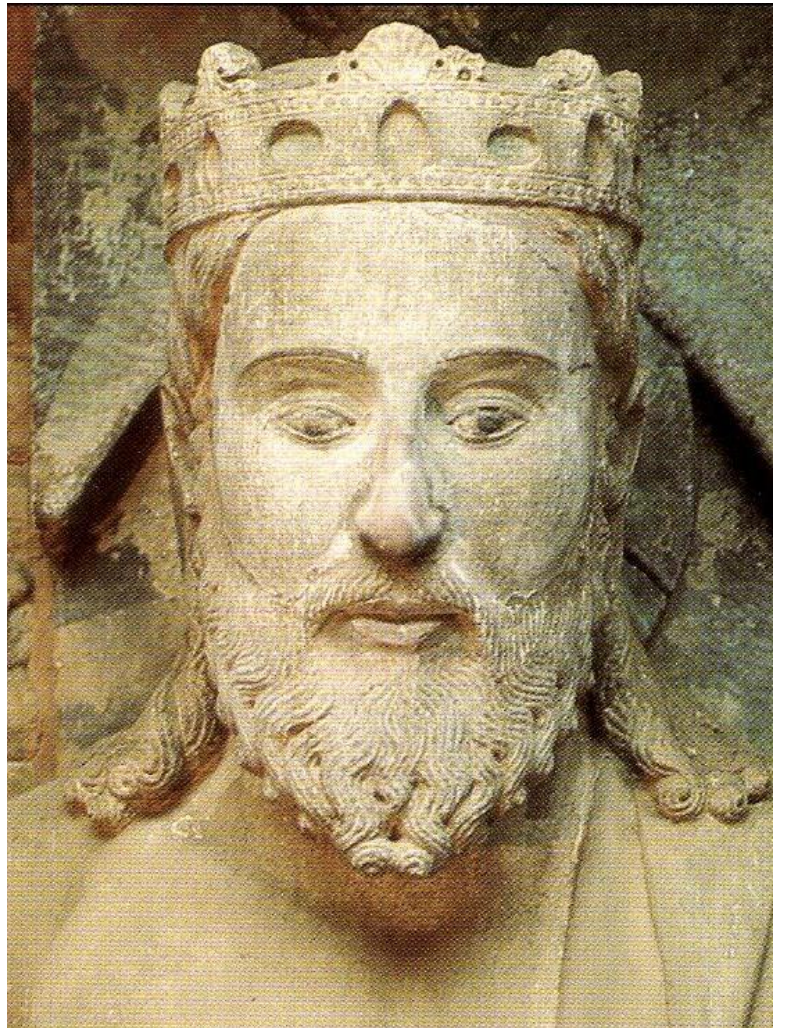


Figure 81

Figure 82

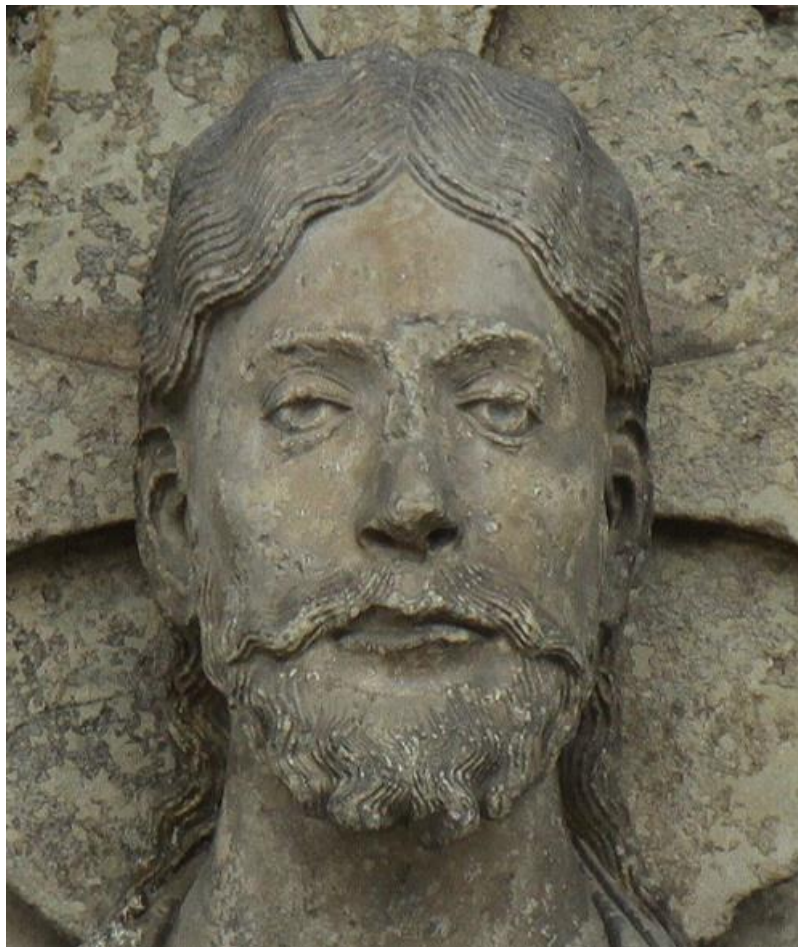
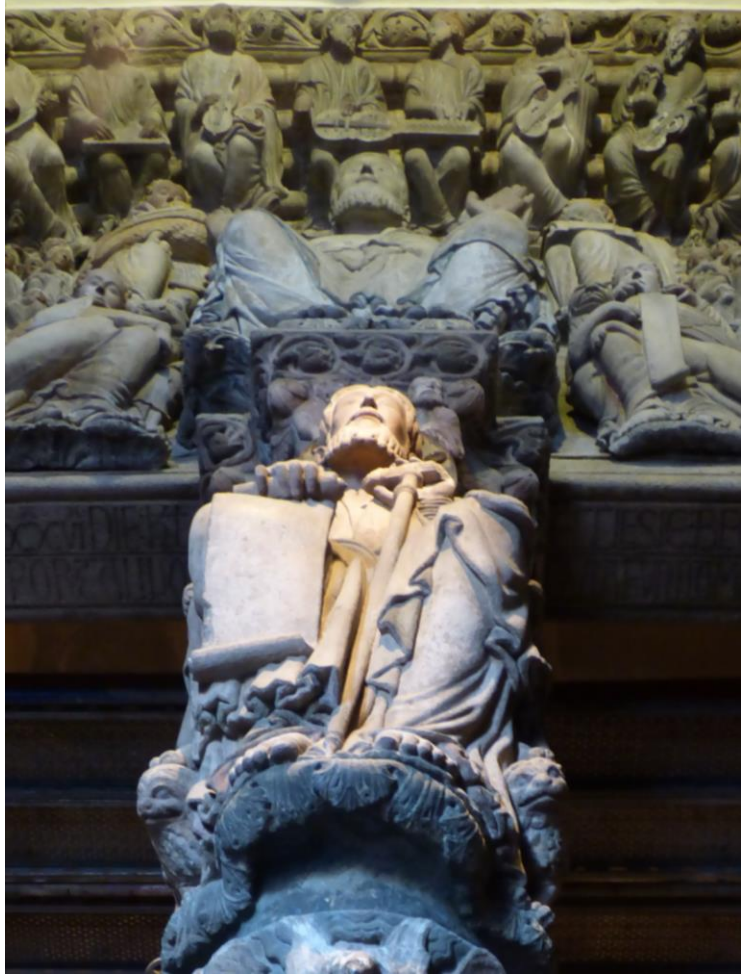


Figure 83



Figure 84



Figure 85

Figure 86



Figure 87



Figure 88



Figure 89



Figure 90



Figure 91

Figure 92



Figure 93



Figure 94



Figure 95

Figure 96

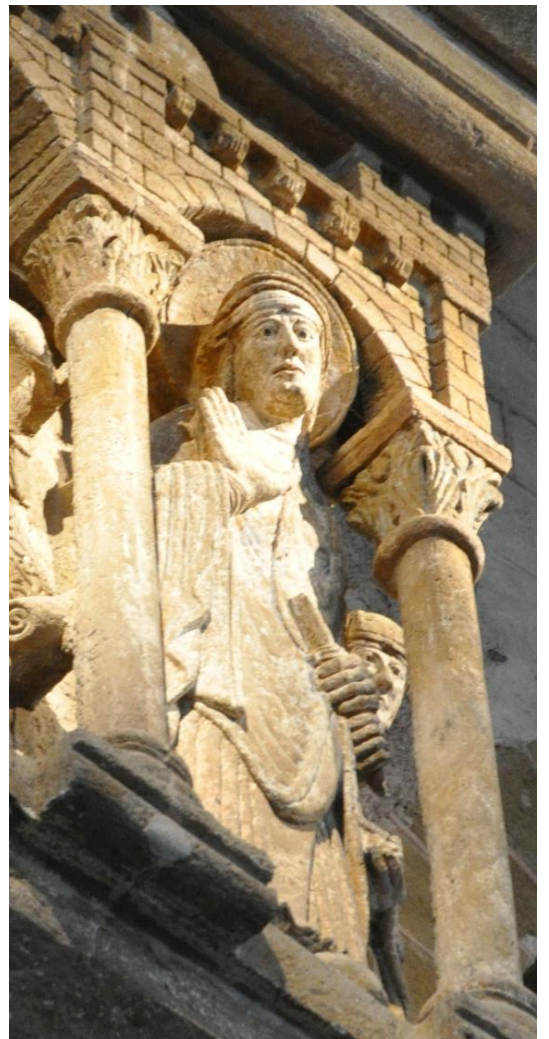


Figure 97



Figure 98

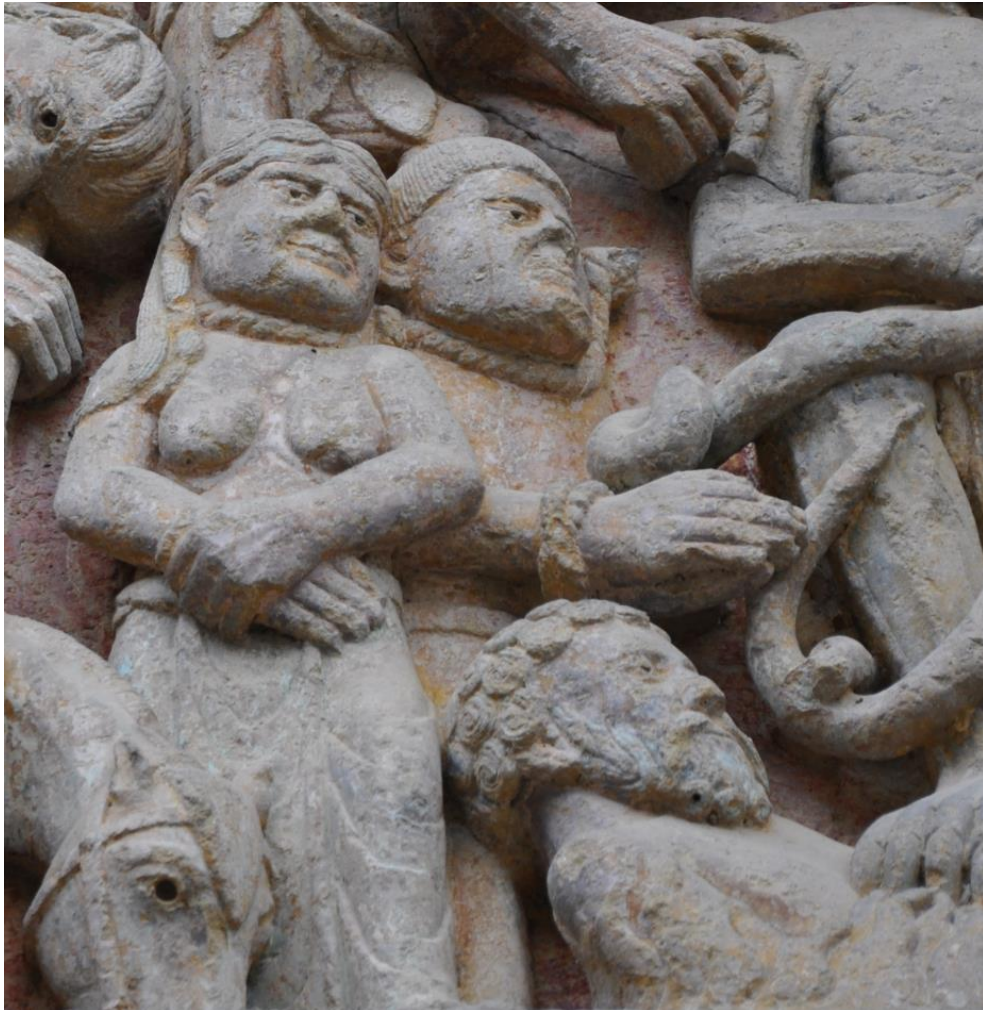


Figure 99



Figure 101

Figure 102

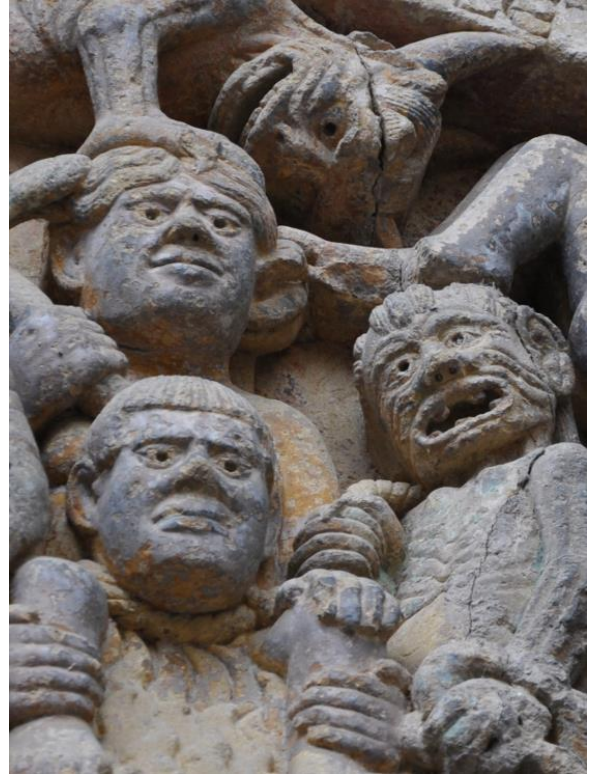


Figure 103



Figure 104

Figure 105

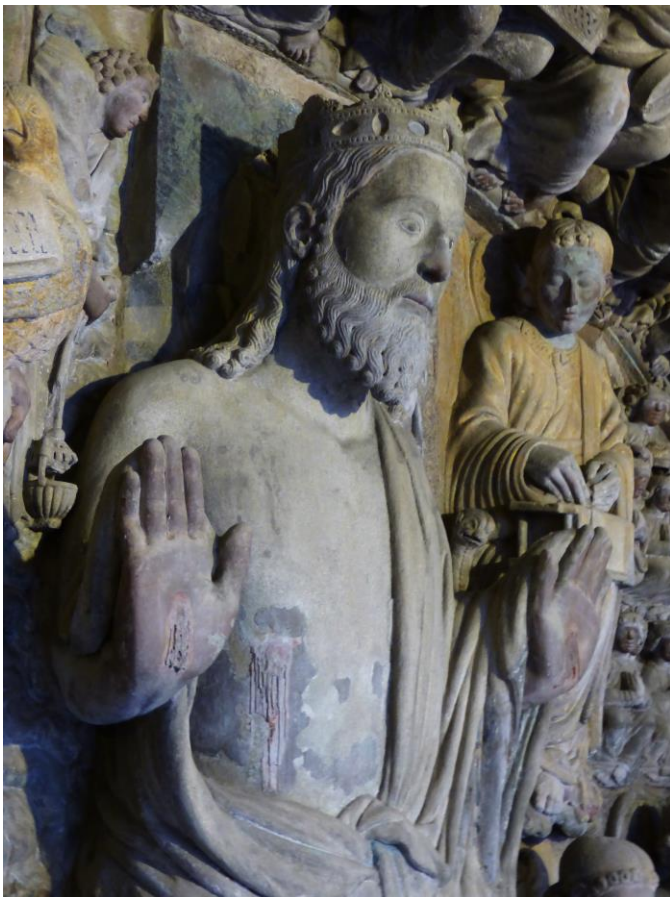


Figure 106

Figure 107



Figure 108





Figure 111

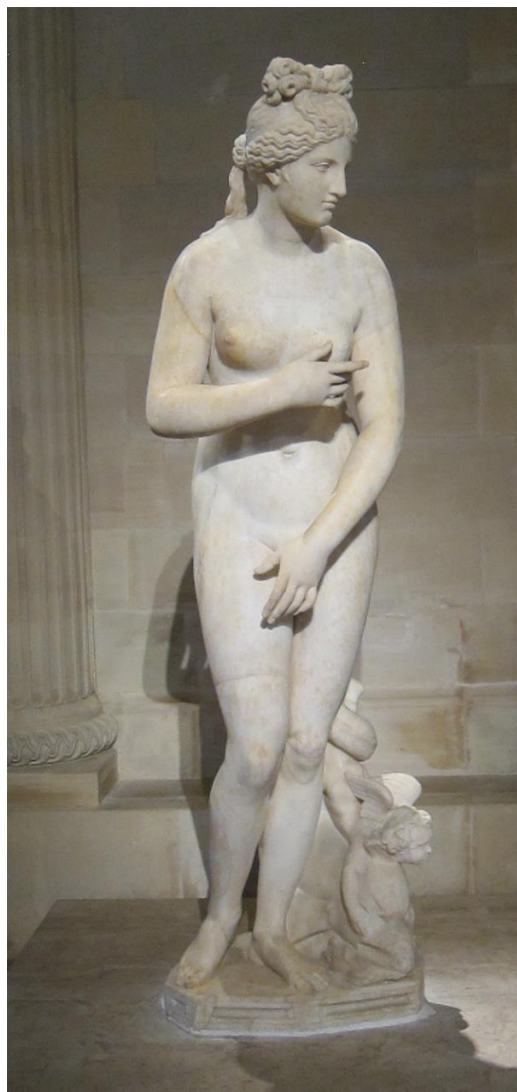


Figure 110

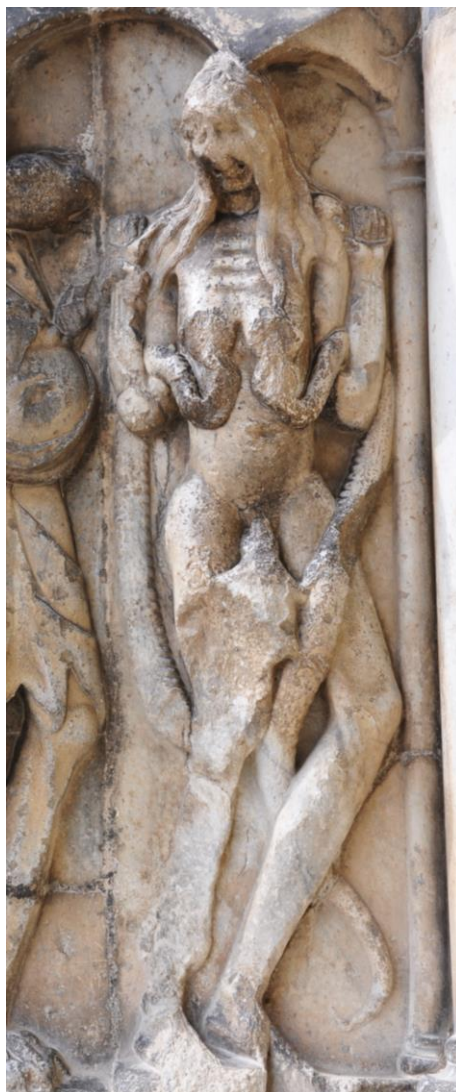


Figure 112



Figure 113





Figure 114

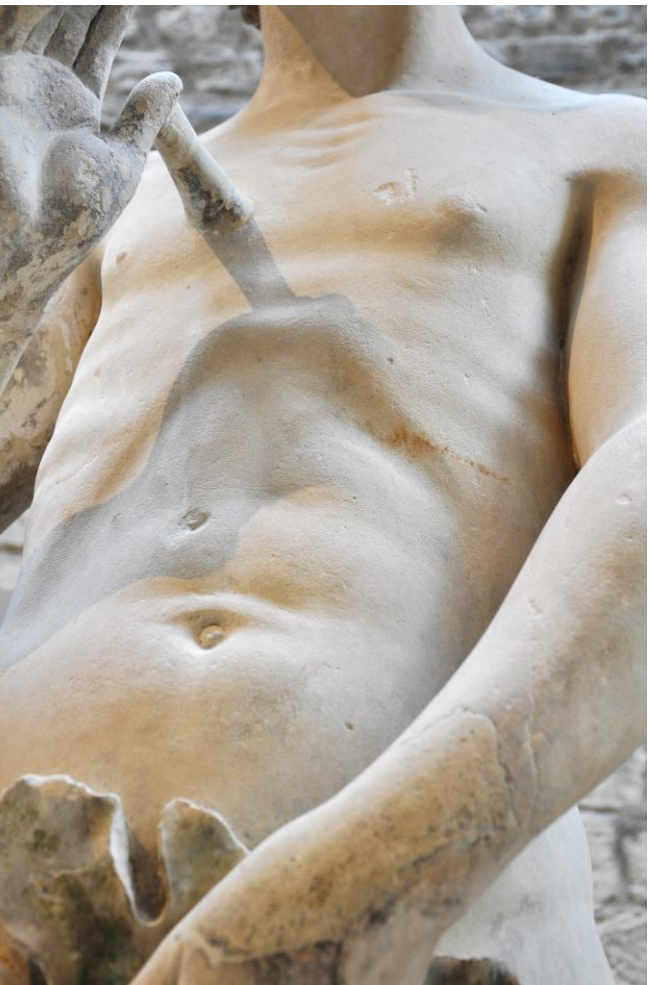


Figure 115

Figure 116



Figure 117

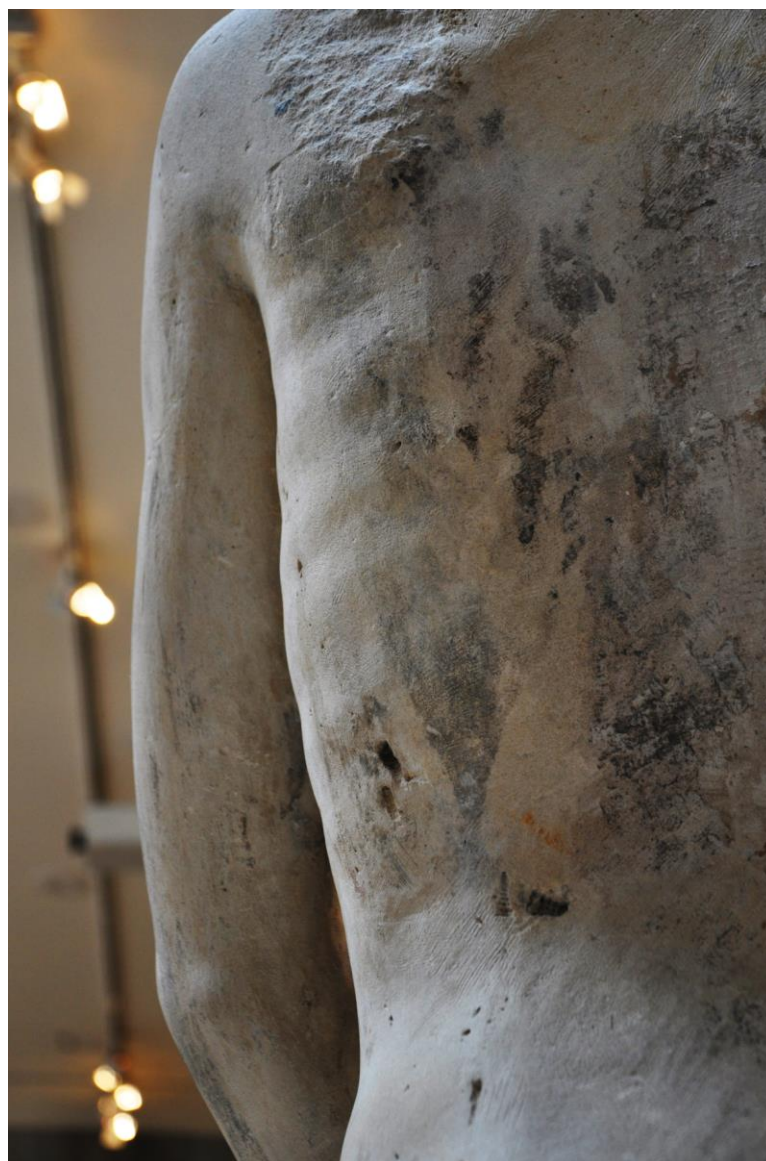




Figure 118



Figure 119

Figure 120



Figure 121



Figure 122



Figure 123



Figure 124

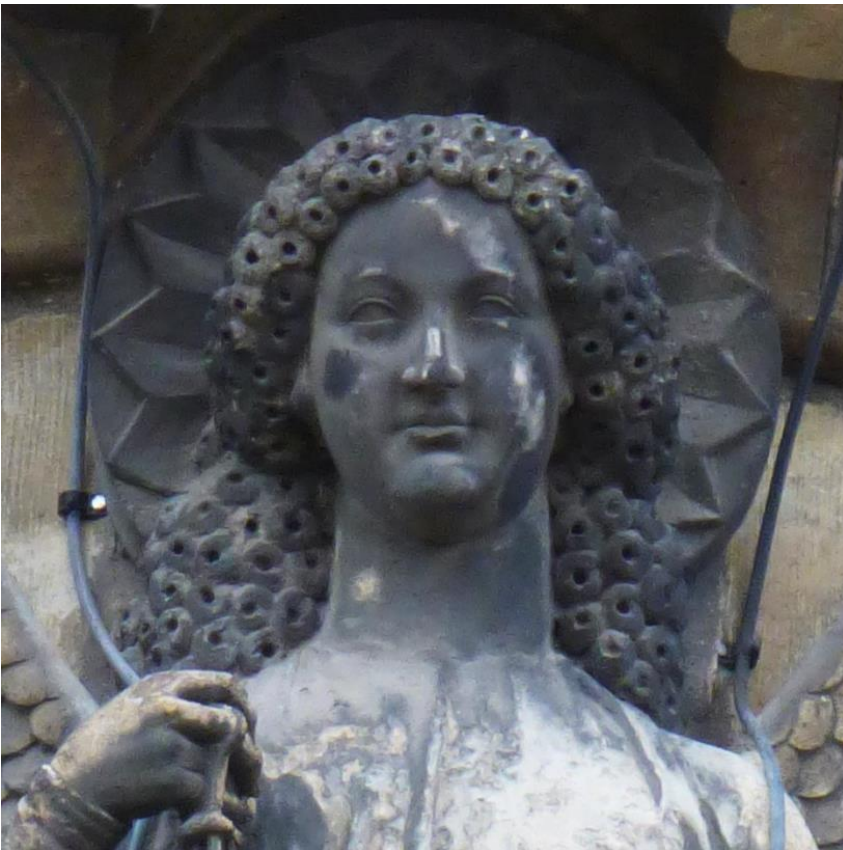


Figure 125

Figure 126

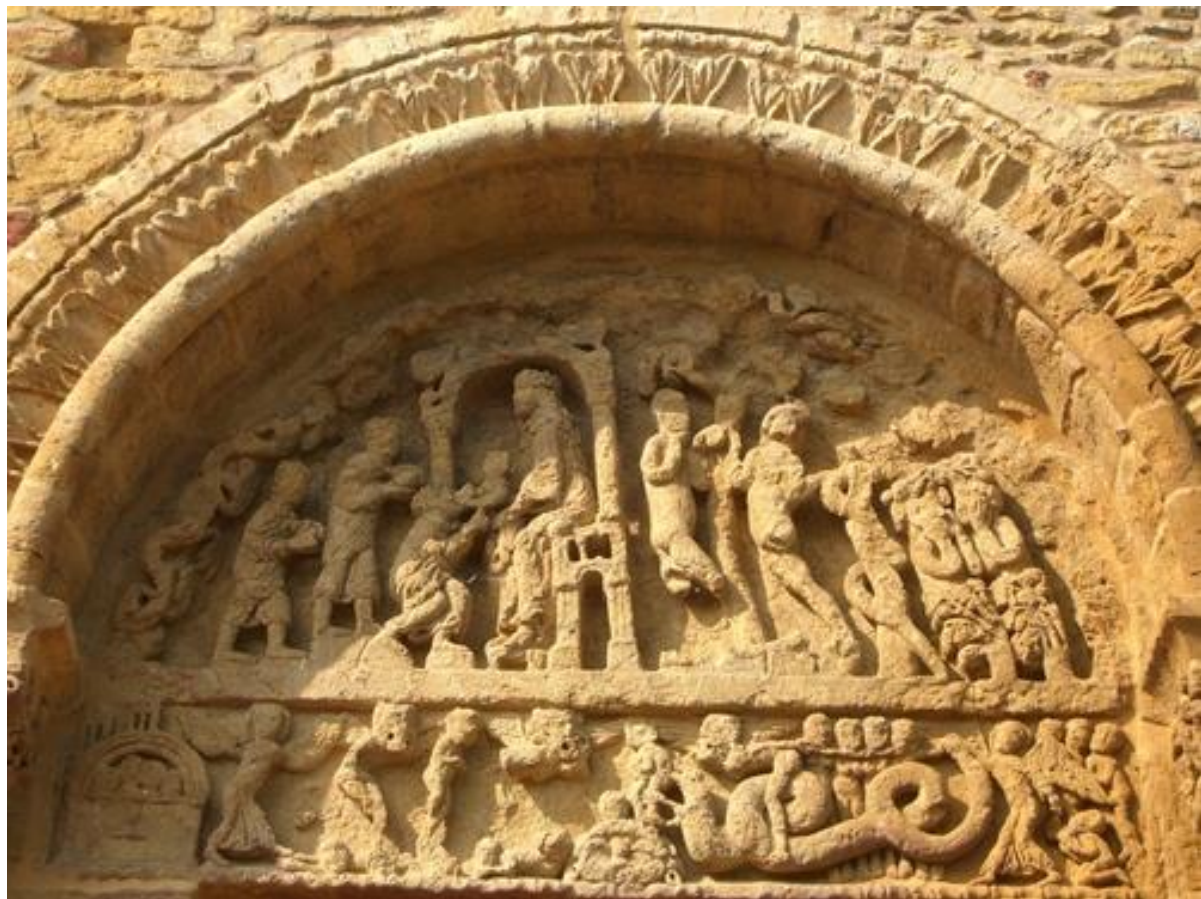


Figure 127



Figure 128



Figure 129

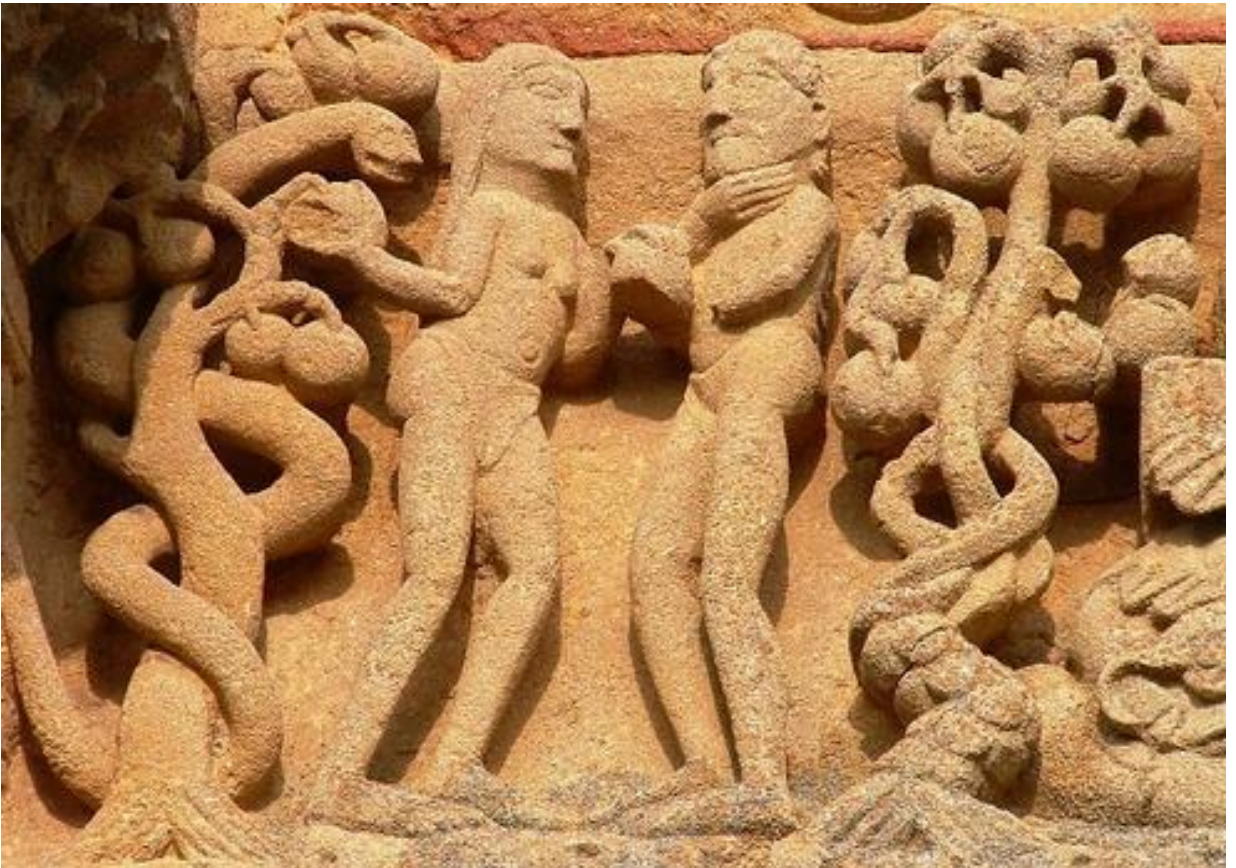


Figure 130



Figure 132



Figure 131

Figure 133



Figure 134



Figure 135



Figure 136

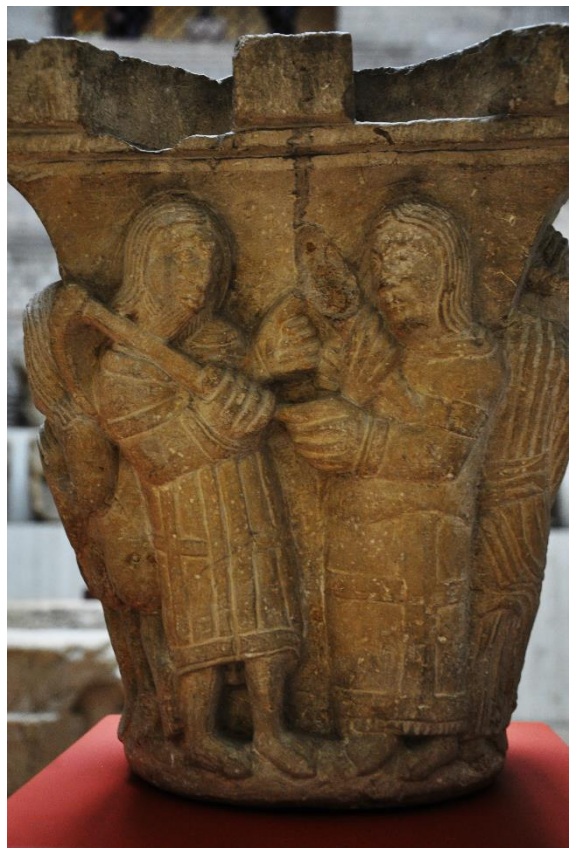


Figure 137



Figure 138

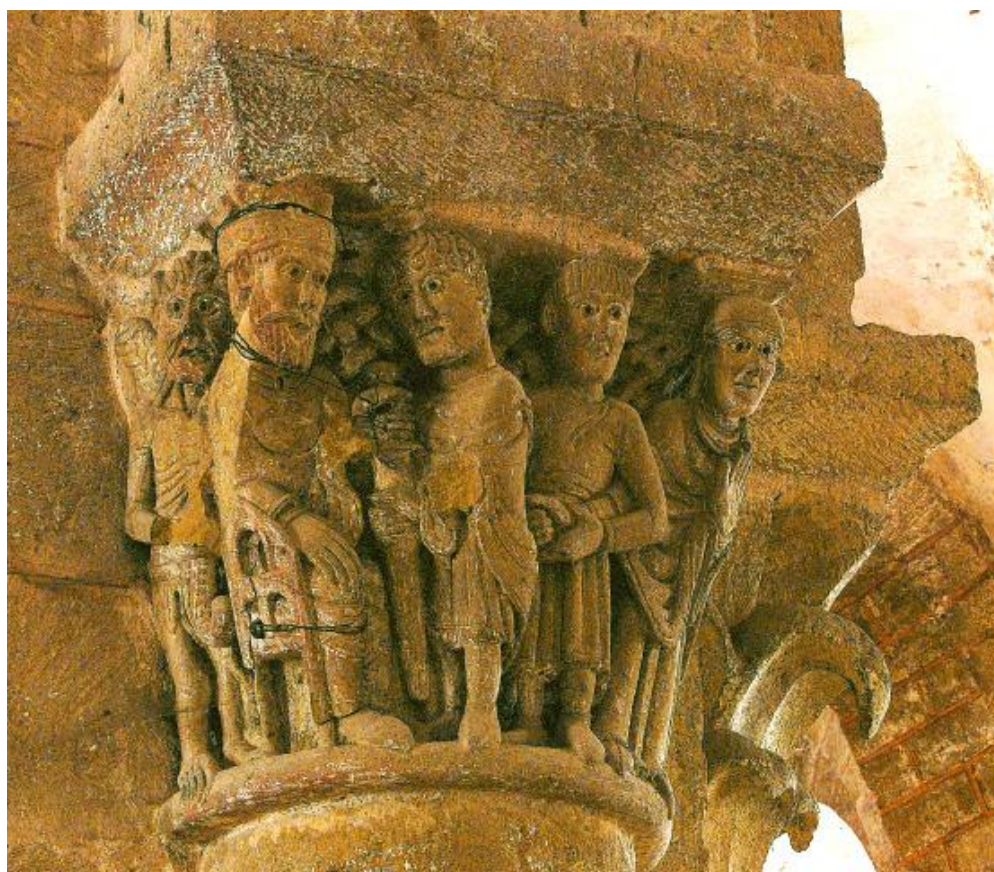


Figure 139



Figure 140



Figure 141

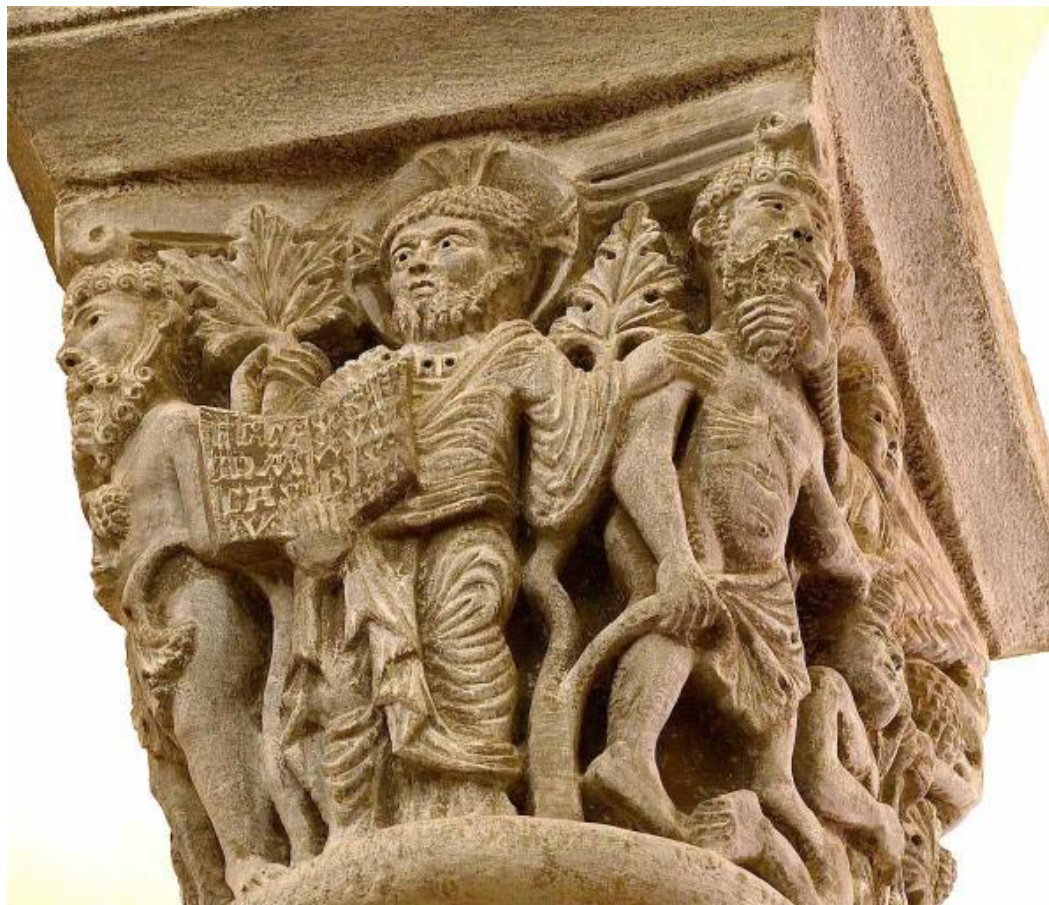


Figure 142

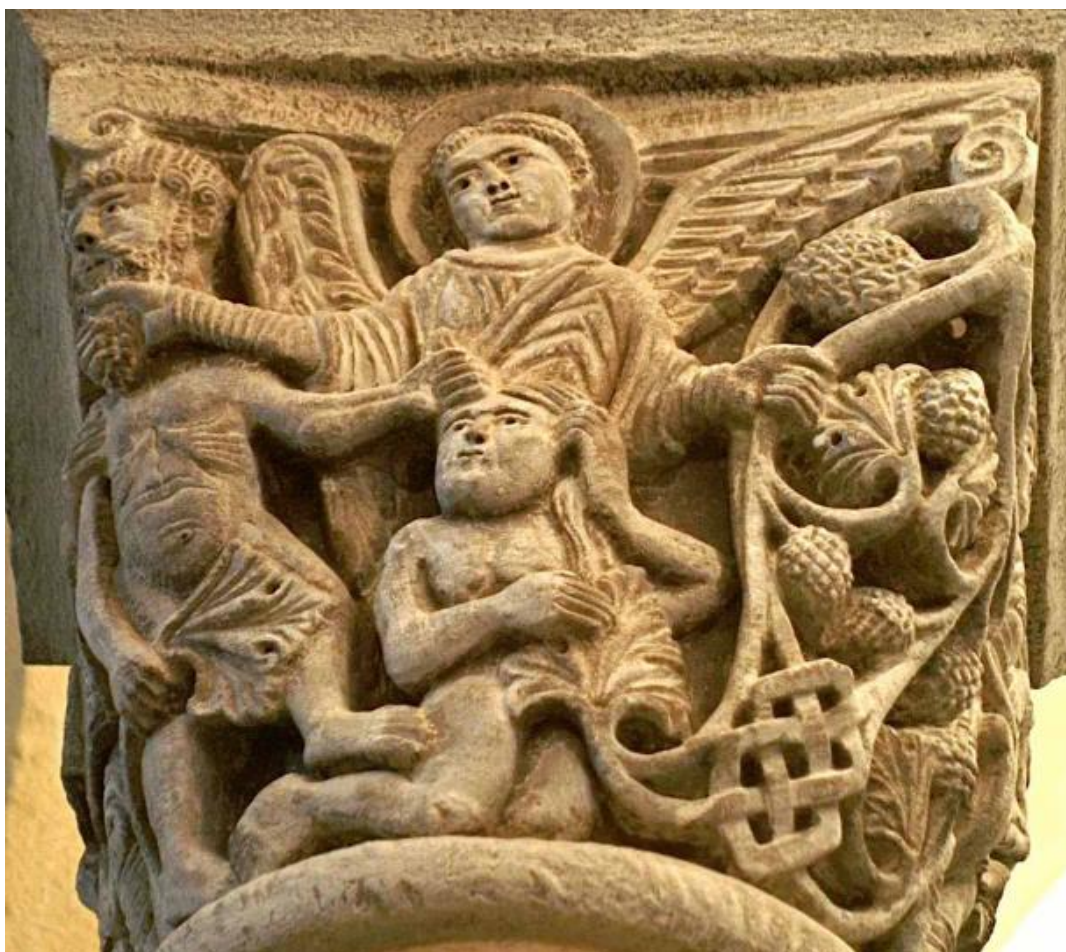




Figure 143



Figure 144

Figure 145



Figure 146

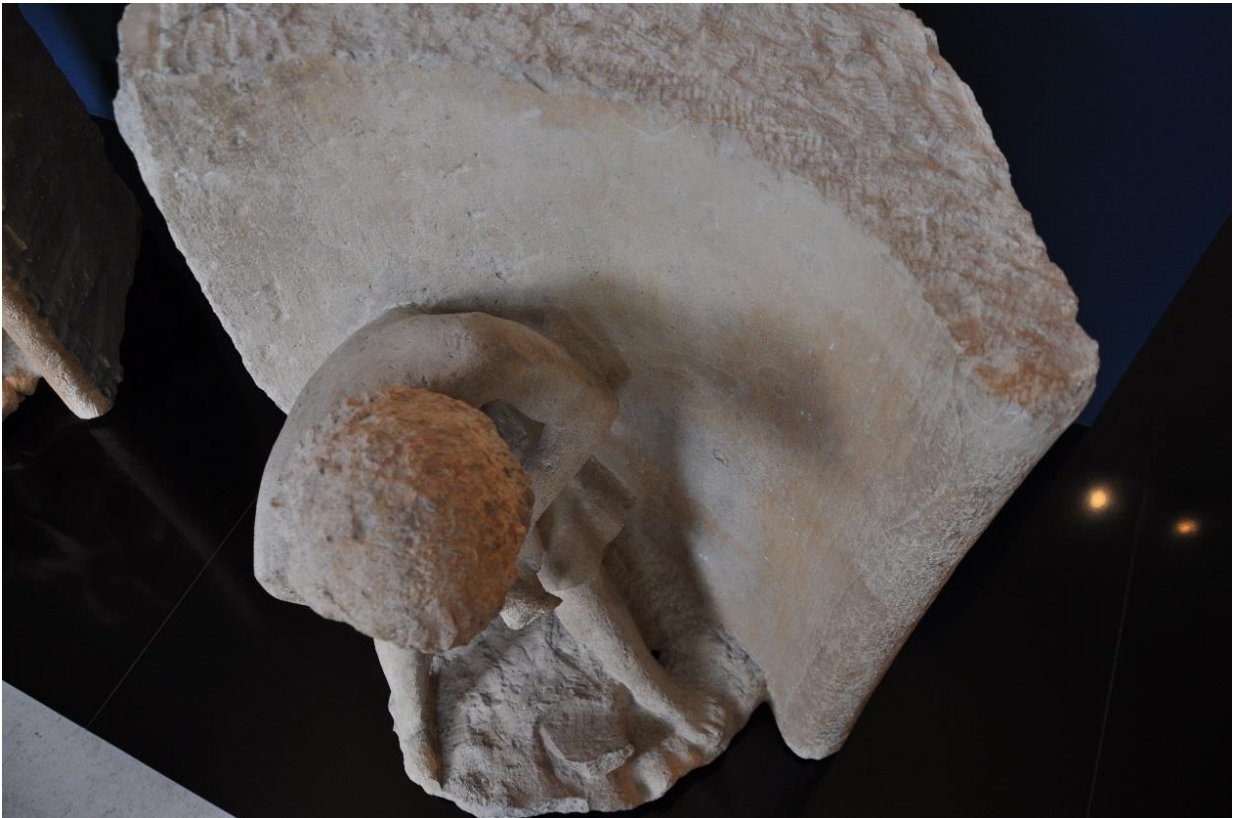


Figure 147

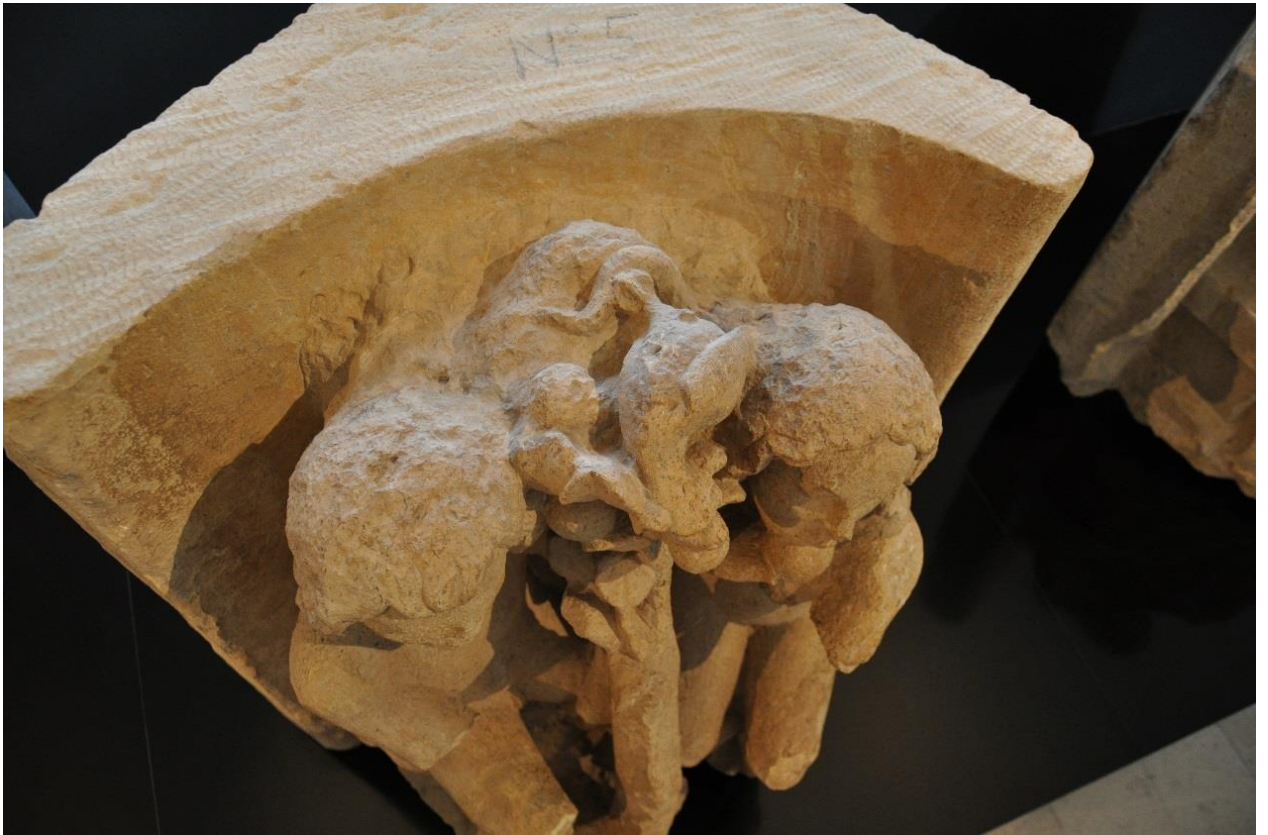


Figure 148

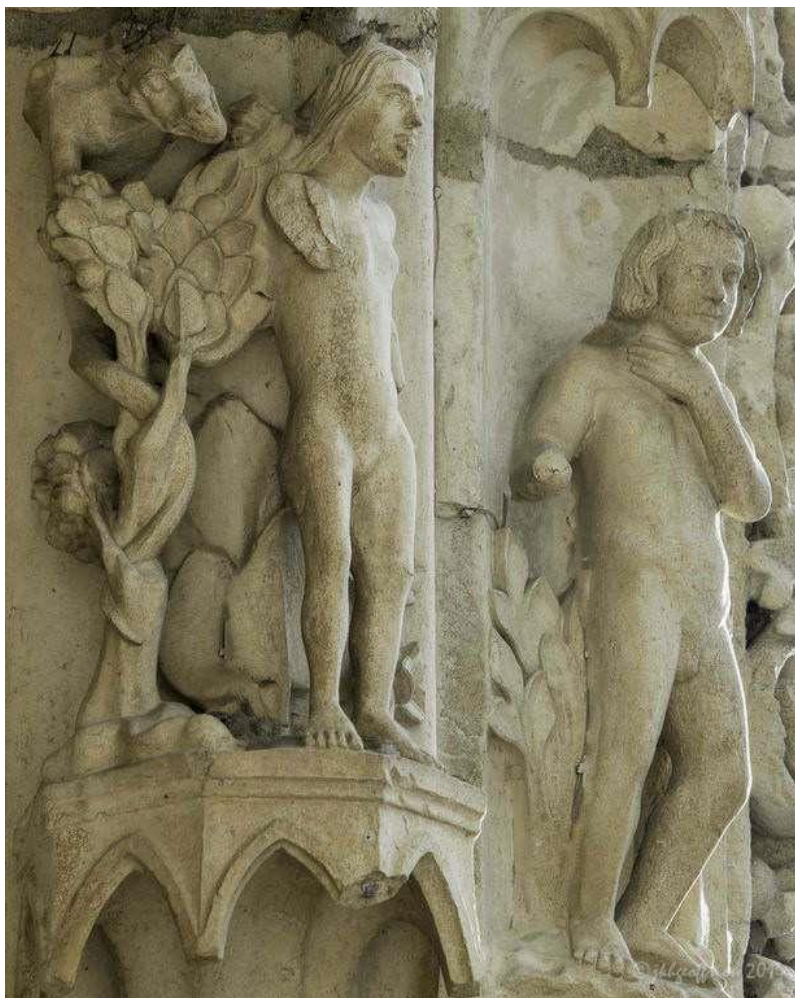




Figure 149

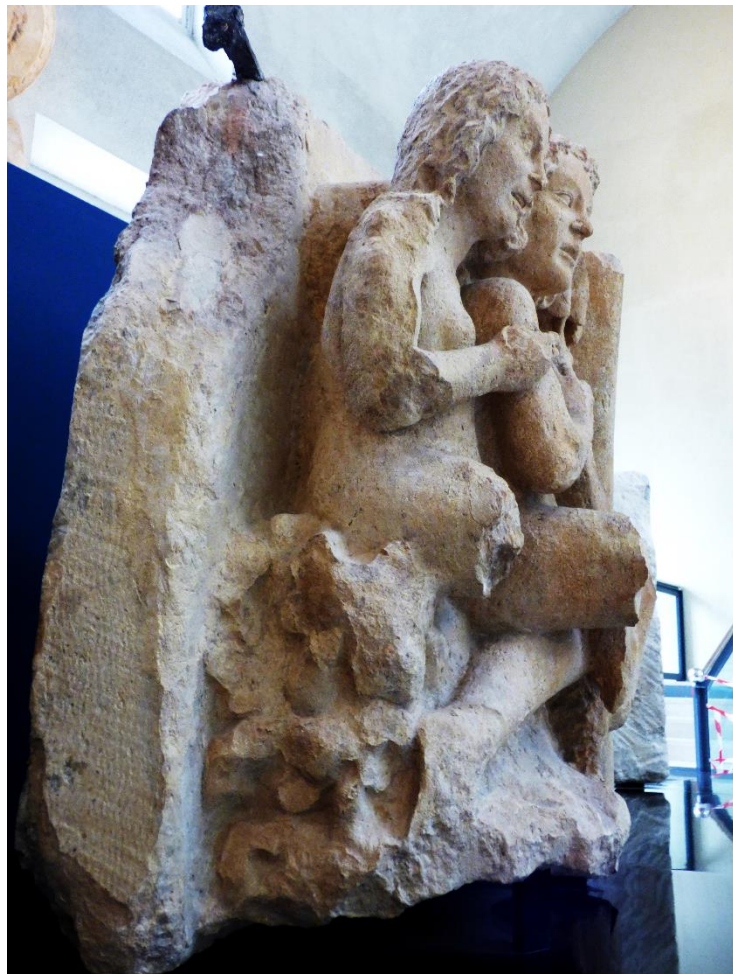


Figure 150

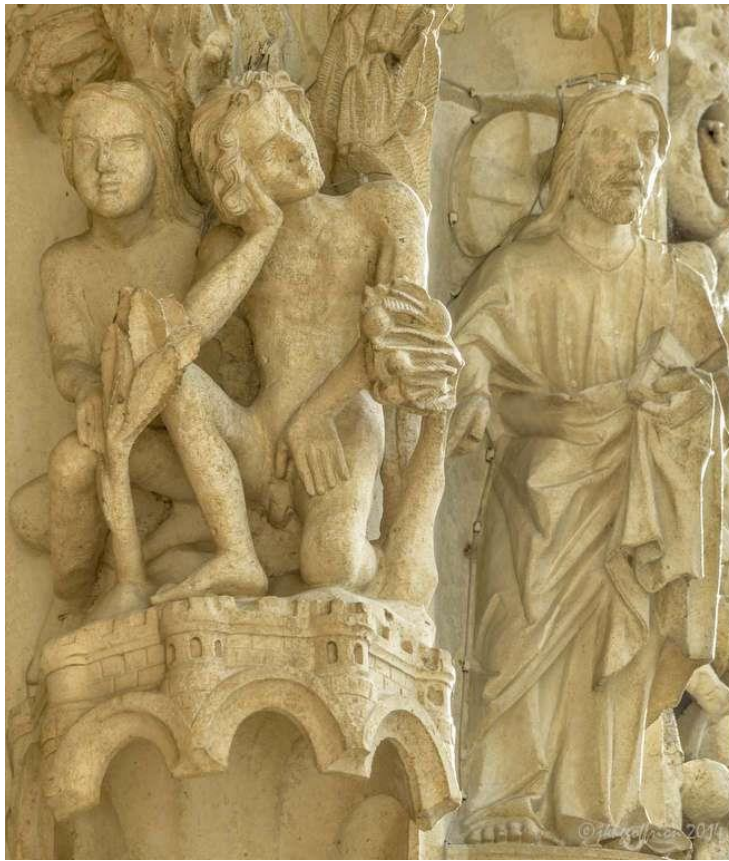


Figure 151

Figure 152

Figure 153





Figure 154



Figure 155

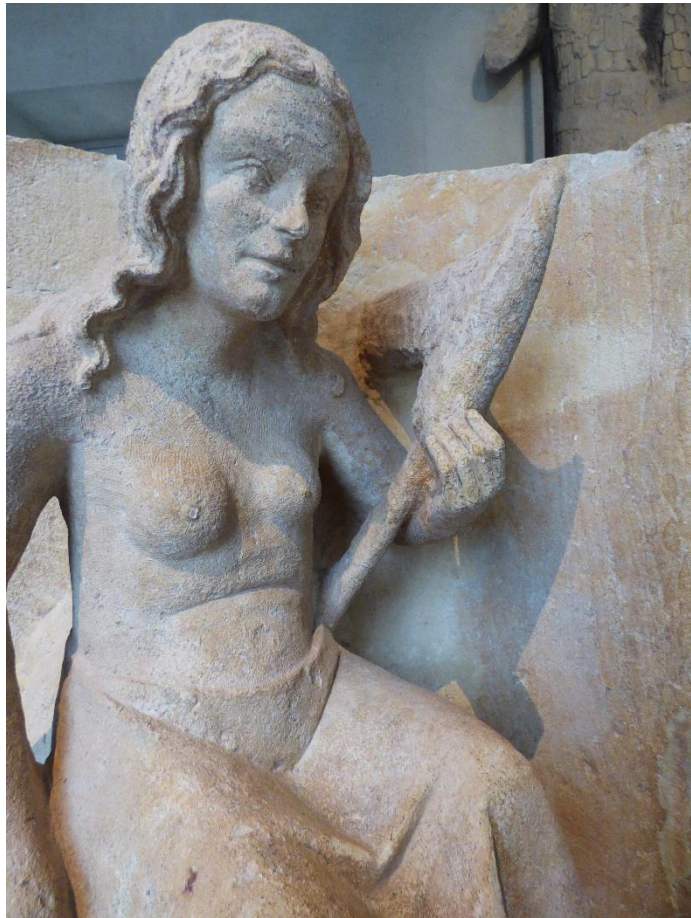


Figure 156



Figure 157

Figure 158

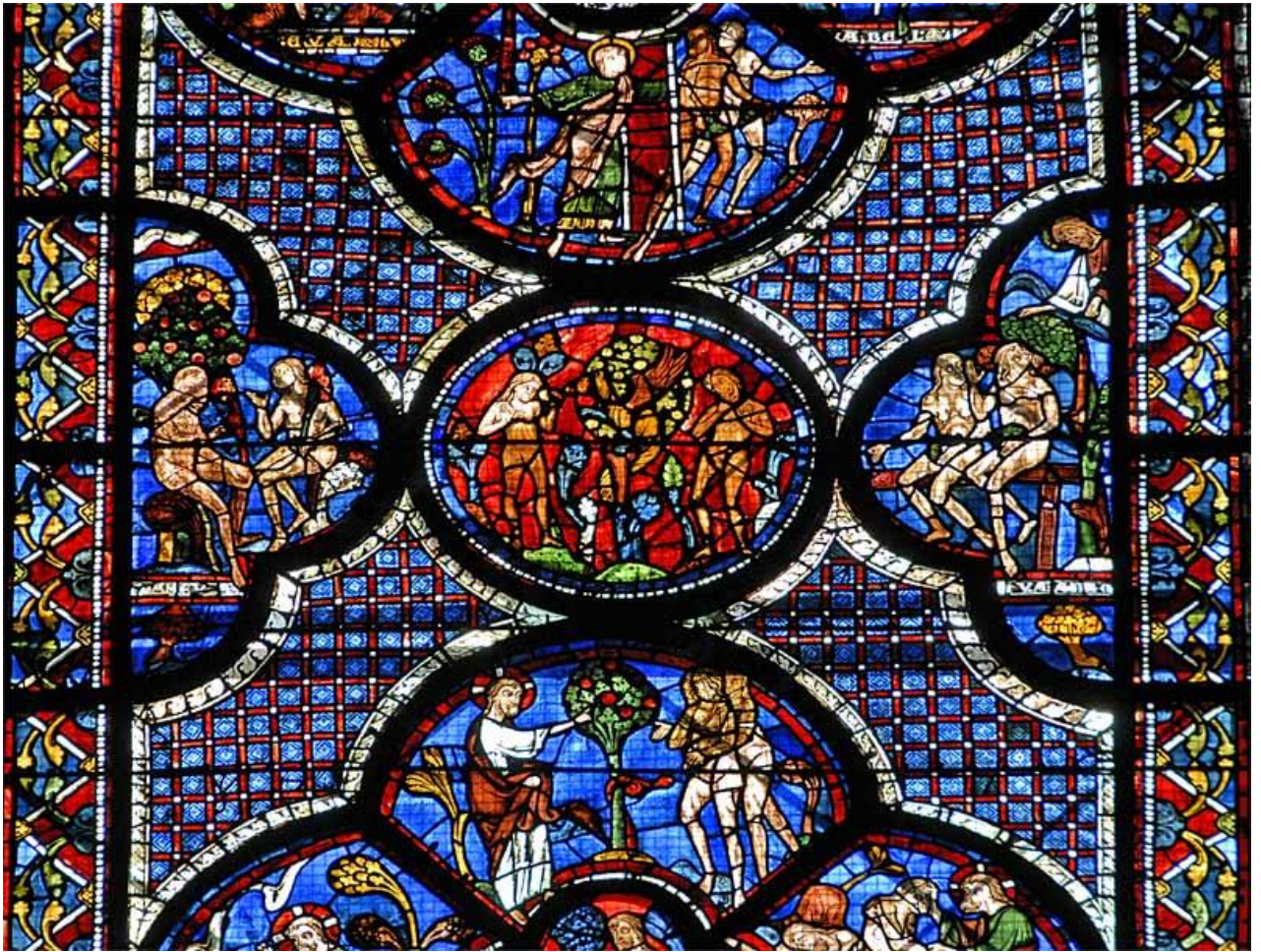
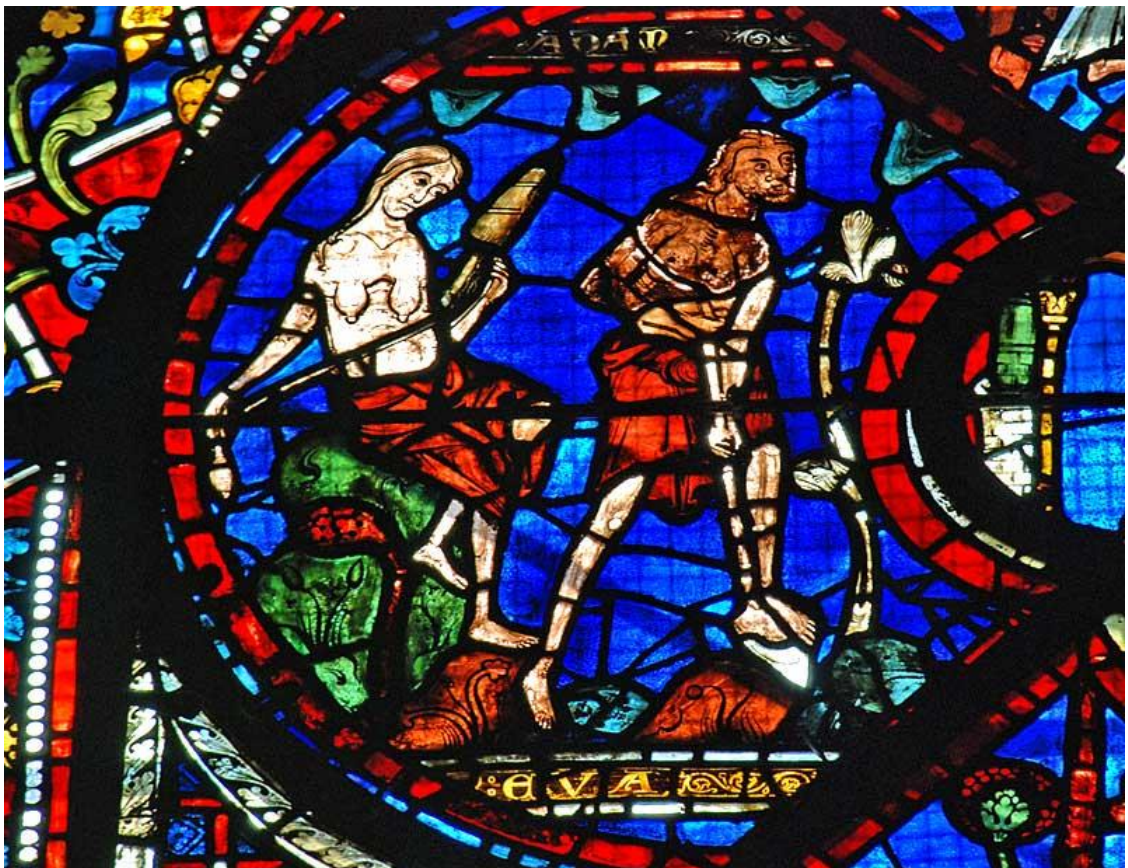


Figure 159



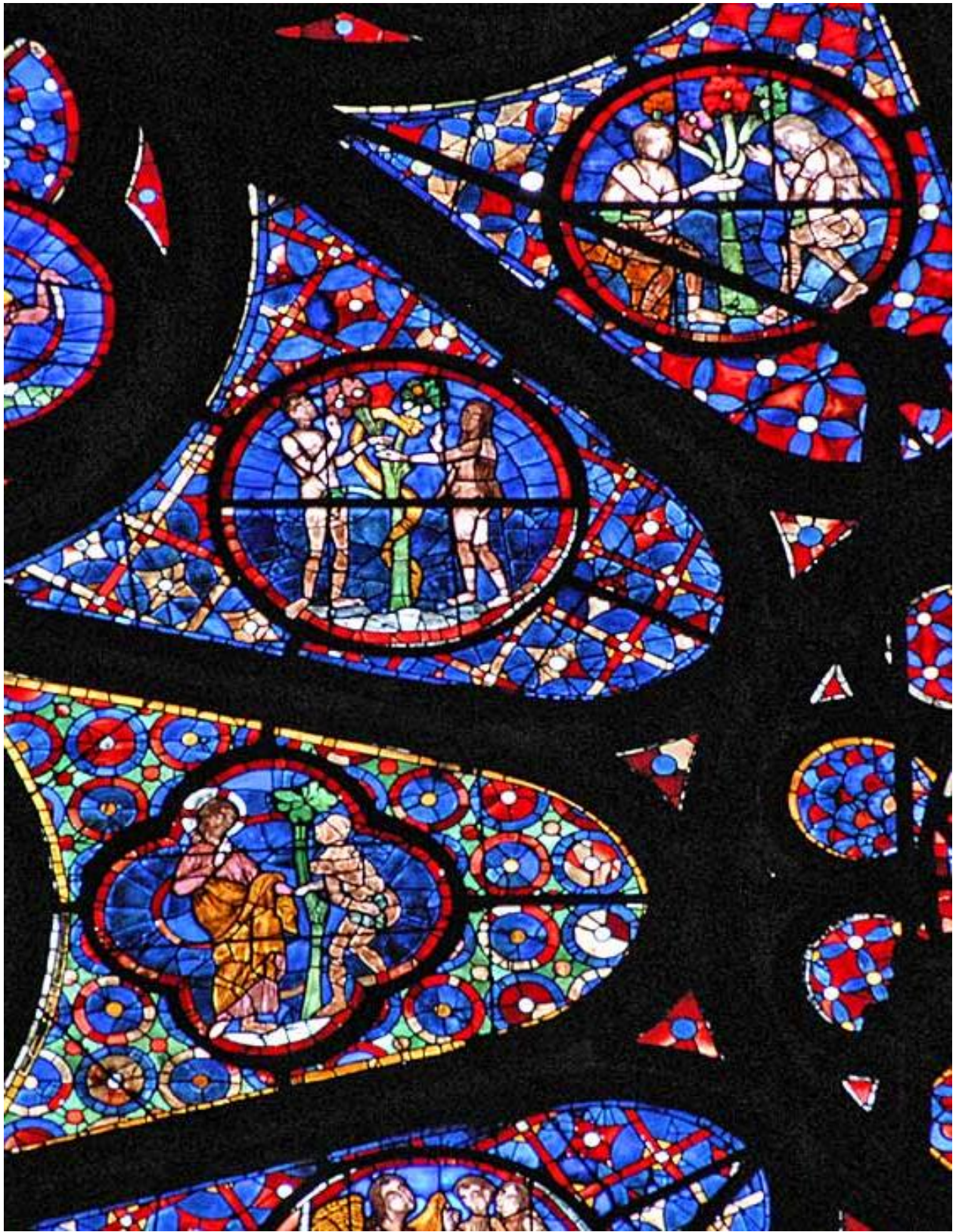


Figure 160



Figure 162



Figure 163



Figure 164



Figure 165



Figure 166



Figure 167



Figure 168



Figure 169



Figure 170



Figure 171



Figure 172



Figure 173



Figure 174



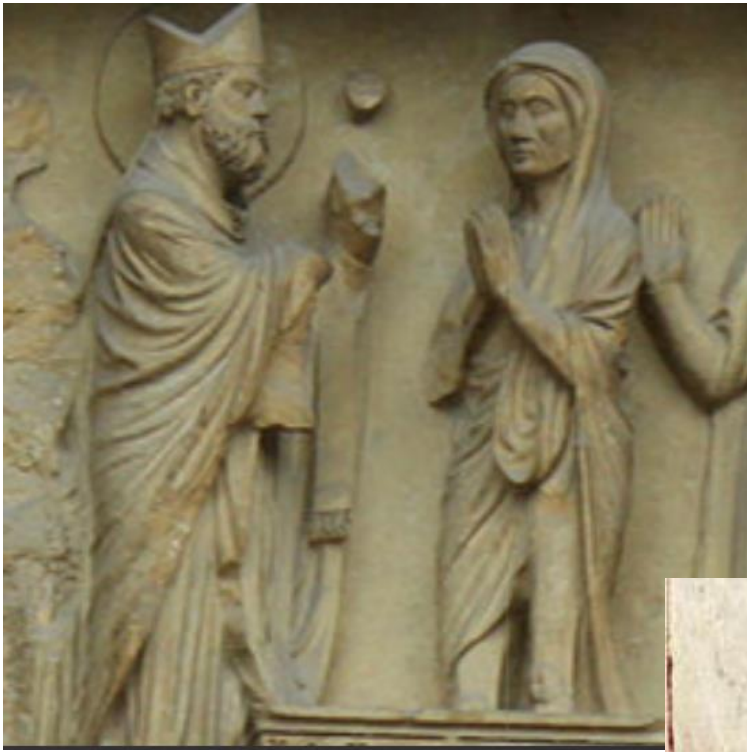


Figure 175



Figure 176

Figure 177

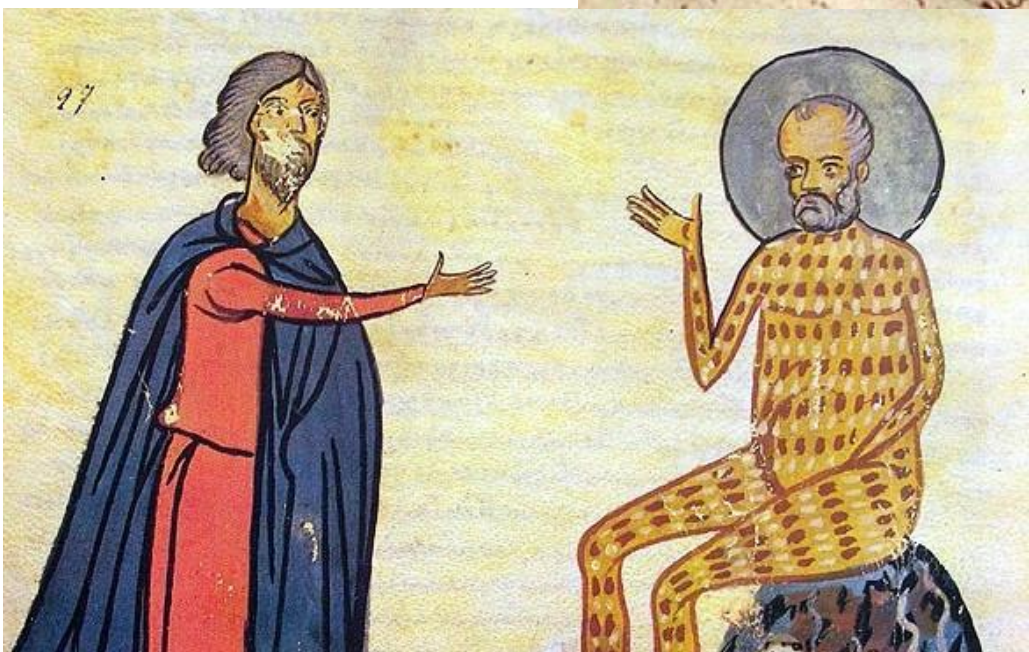




Figure 178

Figure 179

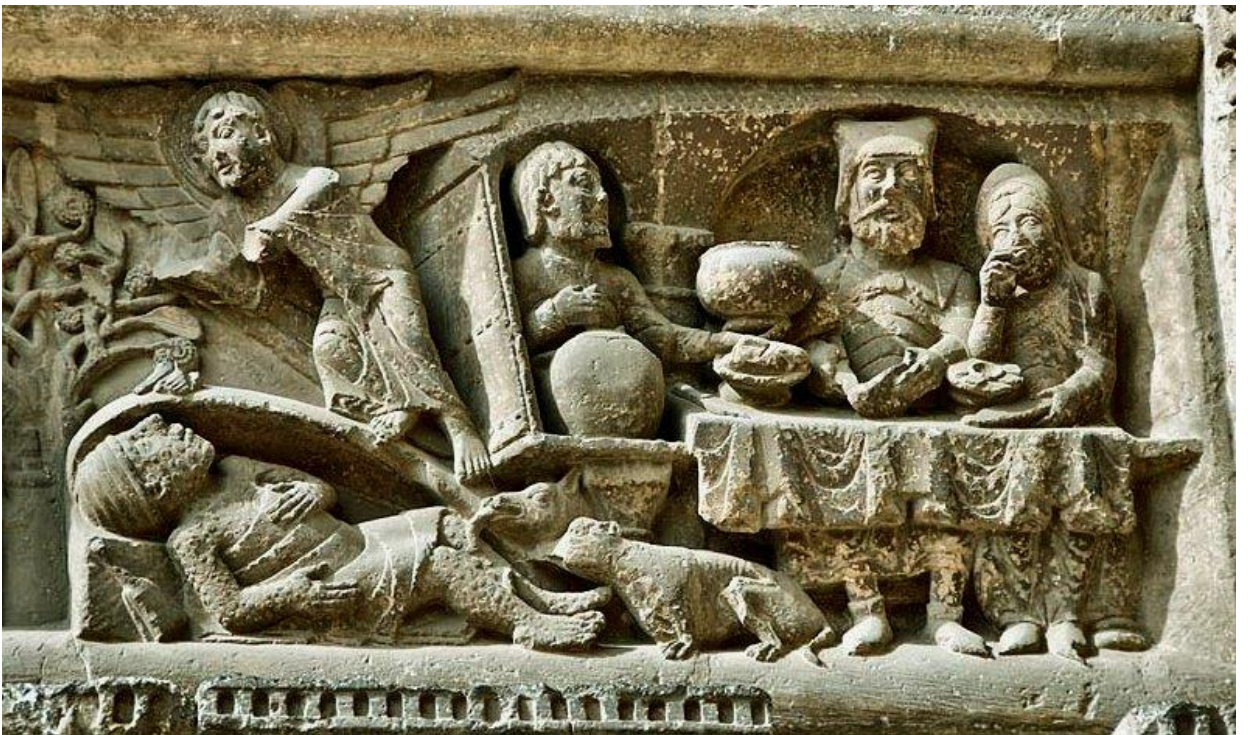
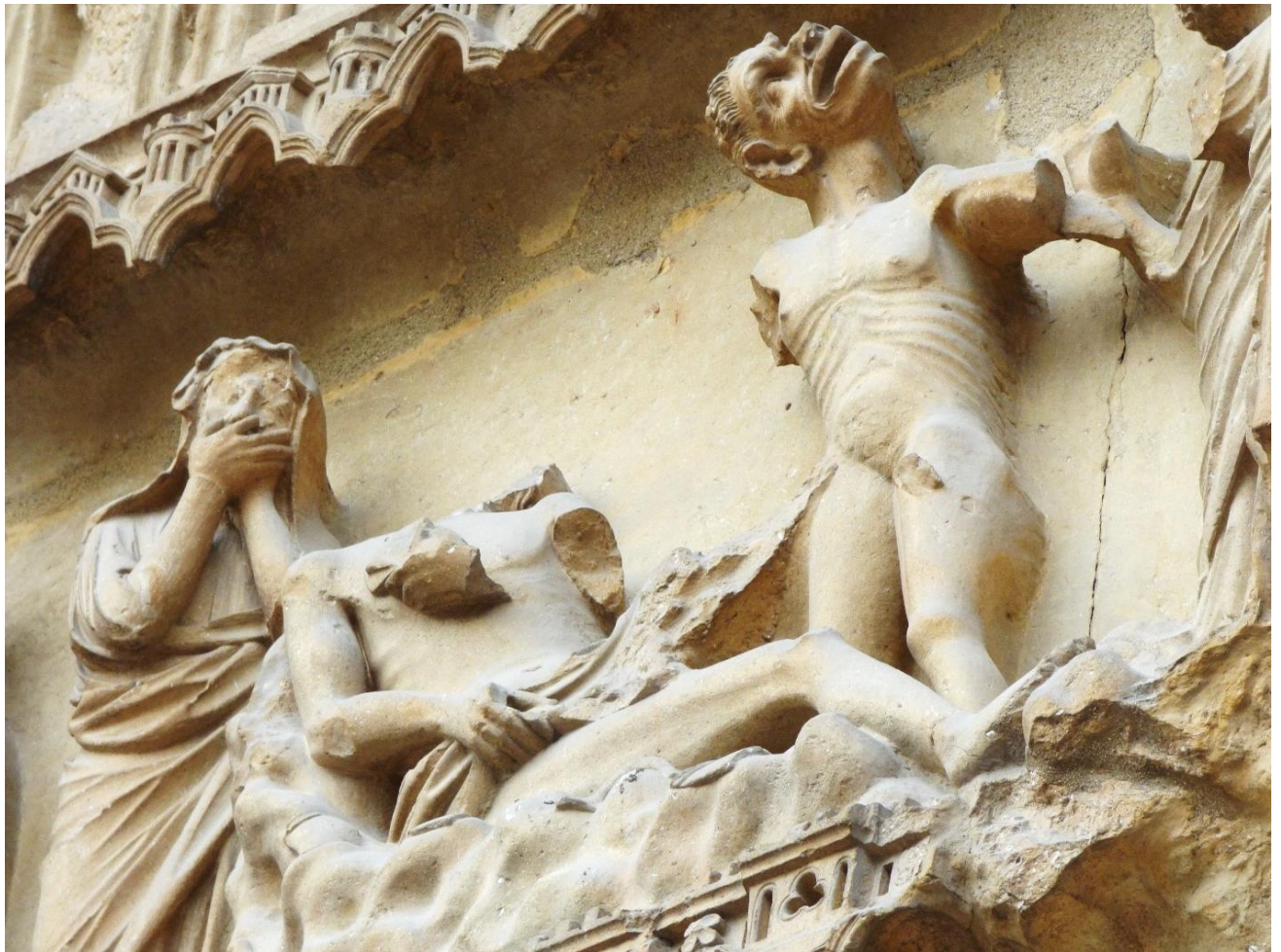


Figure 180



Figure 181



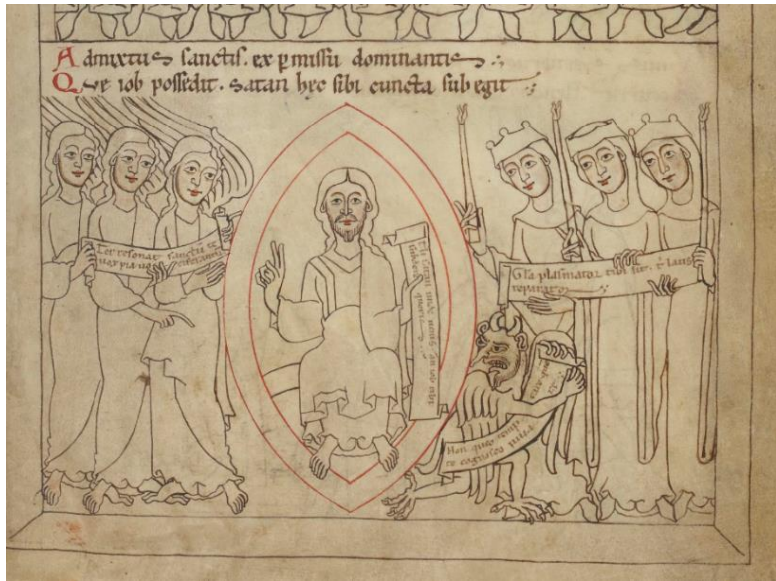


Figure 182



Figure 183



Figure 184



Figure 185



Figure 186



Figure 187

Figure 188



Figure 189



Figure 190



Figure 191

