



# THE UNIVERSITY *of* EDINBURGH

## Edinburgh Research Explorer

### A tail of translational regulation

**Citation for published version:**

Gray, GA & Gray, NK 2017, 'A tail of translational regulation' eLIFE, vol. 6. DOI: 10.7554/eLife.29104

**Digital Object Identifier (DOI):**

[10.7554/eLife.29104](https://doi.org/10.7554/eLife.29104)

**Link:**

[Link to publication record in Edinburgh Research Explorer](#)

**Document Version:**

Publisher's PDF, also known as Version of record

**Published In:**

eLIFE

**Publisher Rights Statement:**

This article is distributed under the terms of the Creative Commons Attribution License, which permits unrestricted use and redistribution provided that the original author and source are credited.

**General rights**

Copyright for the publications made accessible via the Edinburgh Research Explorer is retained by the author(s) and / or other copyright owners and it is a condition of accessing these publications that users recognise and abide by the legal requirements associated with these rights.

**Take down policy**

The University of Edinburgh has made every reasonable effort to ensure that Edinburgh Research Explorer content complies with UK legislation. If you believe that the public display of this file breaches copyright please contact [openaccess@ed.ac.uk](mailto:openaccess@ed.ac.uk) providing details, and we will remove access to the work immediately and investigate your claim.



## CARDIAC HYPERTROPHY

# A tail of translational regulation

**An RNA-binding protein called PABPC1 has an important role in determining protein synthesis rates and hypertrophy in the heart.**

GILLIAN A GRAY AND NICOLA K GRAY

**Related research article** Chorghade S, Seimetz J, Emmons R, Yang J, Bresson SM, De Lisio M, Parise G, Conrad NK, Kalsotra A. 2017. Poly(A) tail length regulates PABPC1 expression to tune translation in the heart. *eLife* 6:e24139. doi: [10.7554/eLife.24139](https://doi.org/10.7554/eLife.24139)

The mammalian heart is a muscular pump that handles about five litres of blood per minute in the average human. Muscle cells known as cardiomyocytes make up 25–35% of all cells in the heart, with the remainder largely being vascular endothelial cells and fibroblasts (Pinto *et al.*, 2016). The proliferation of cardiomyocytes is key to the growth of the heart before birth, and also soon after birth, but most cardiomyocytes lose their capacity to proliferate after the early post-natal period in both mice (Soonpaa *et al.*, 1996) and humans (Bergmann *et al.*, 2015). Thereafter, cardiac growth is achieved mainly by increases in the size of cardiomyocytes in a process known as hypertrophy.

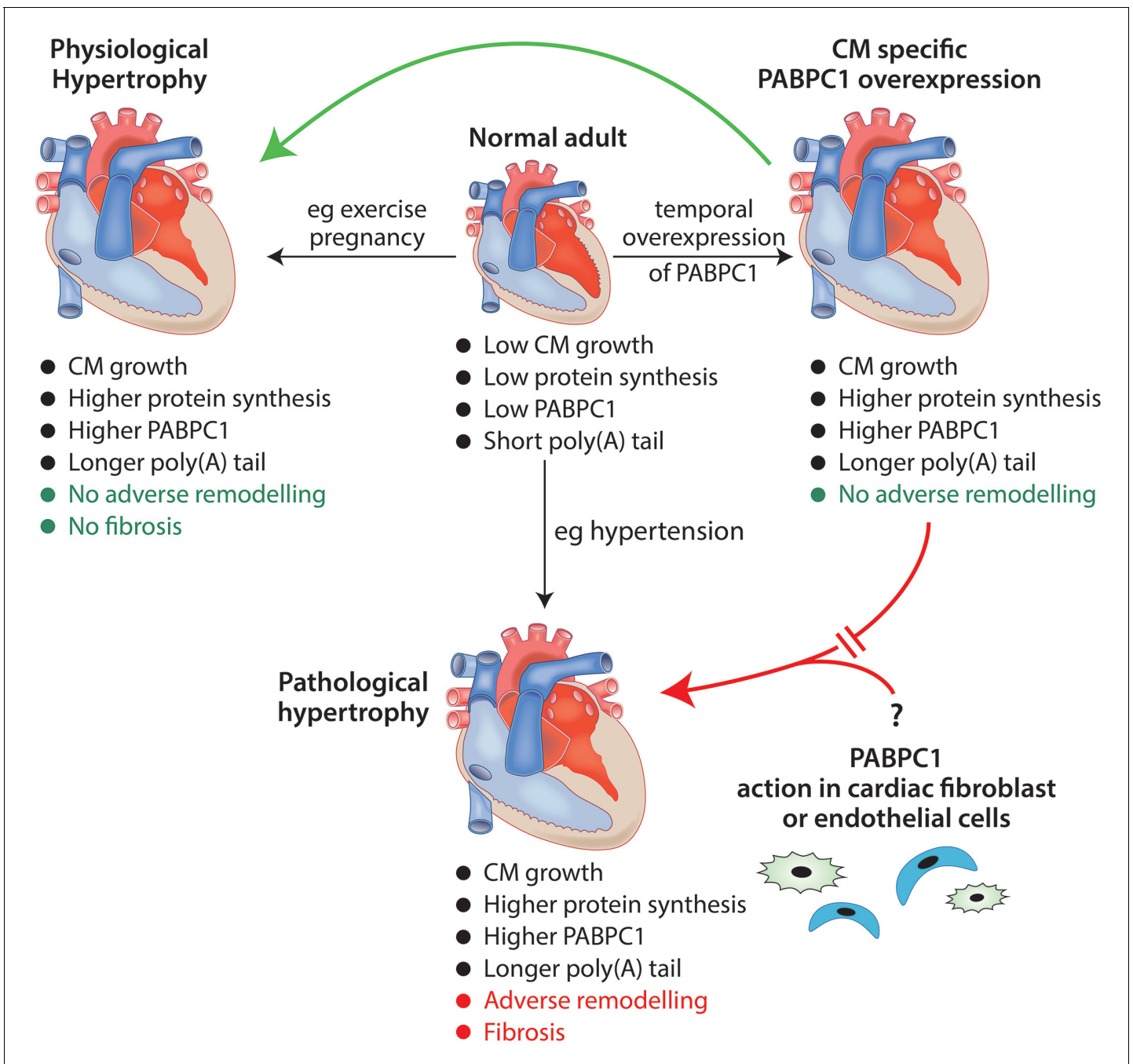
In adulthood cardiac hypertrophy can occur as a physiological adaptation to an increased need to pump blood following sustained athletic training or during pregnancy (reviewed in Maillet *et al.*, 2013). Cardiac hypertrophy can also be pathological in nature – for example, when it is caused by long-term hypertension. Although cellular signalling pathways and gene transcription change in distinct ways during ‘physiological’ and ‘pathological’ cardiac hypertrophy, both require *de novo* protein synthesis

in order to increase cardiomyocyte size (Figure 1; reviewed in Heineke and Molkentin, 2006). Now, in eLife, Auinash Kalsotra of the University of Illinois and co-workers – including Sandip Chorghade and Joseph Seimetz as joint first authors – reveal an unexpected role for an RNA-binding protein called PABPC1 in cardiac hypertrophy (Chorghade *et al.*, 2017).

PABPC1 (commonly known as PABP1) is one of the 1000+ RNA-binding proteins found in humans, and has multiple functions in controlling the synthesis of new proteins (reviewed in Smith *et al.*, 2014). However, it is best characterized as a factor that is required for efficient messenger RNA (mRNA) translation and to maintain mRNA stability, and it is generally considered to be an abundant and essential protein (Smith *et al.*, 2014).

Protein synthesis is surprisingly low in the adult heart, perhaps reflecting the relatively low level of cell turnover there. Intriguingly, Chorghade *et al.* show that PABPC1 is abundant in the neonatal heart, but is only present at very low levels in the adult heart, and they go on to show that the low levels of PABPC1 in the adult heart are due to reduced translation of PABPC1 mRNA. Chorghade *et al.* also found that this reduction in translation coincided with a shortening of the 3′ poly(A) tail of PABPC1 mRNA: poly(A) tails are critical for efficient translation but their length can be exquisitely regulated by a number of mechanisms (reviewed in Charlesworth *et al.*, 2013).

Intriguingly, the length of the poly(A) tail of PABPC1 mRNA and its translation were increased in experimental models of both physiological hypertrophy (induced by swimming) and pathological hypertrophy (induced by narrowing of the aorta to mimic high blood pressure), leading to an increase in PABPC1 levels.



**Figure 1.** The role of the RNA-binding protein PABPC1 in cardiac hypertrophy. In a normal adult heart, cardiomyocytes (CM) show little growth or turnover, and protein synthesis and PABPC1 levels are low. The temporal overexpression of PABPC1 in adult cardiomyocytes leads to a form of cardiac hypertrophy (top right) that resembles (green arrow) physiological cardiac hypertrophy (e.g. induced by pregnancy or endurance exercise) but not (red broken arrow) pathological cardiac hypertrophy (e.g. induced by long-term hypertension). However, a number of features (such as cardiomyocyte growth, higher protein synthesis and higher levels of PABPC1) are common to both physiological and pathological cardiac hypertrophy. This raises the question (bottom right) of whether PABPC1 function in other types of cardiac cells (such as endothelial cells or fibroblasts) may be important in the induction of pathological cardiac hypertrophy. During cardiac hypertrophy, longer poly(A) tails are associated with more efficient translation of the messenger RNA for PABPC1.

Illustration: Ronnie Grant

It was already known that the translation of PABPC1 mRNA was controlled by two mechanisms (reviewed in *Eliseeva et al., 2013*), but uncovering that its poly(A) tail length is also regulated further underscores how important it is to control cellular levels of PABPC1. However, Chorghade et al. found that the 3'untranslated region of PABPC1 mRNA is not important for its regulated translation. This is surprising since studies in multiple cell types have shown that sequences within the 3'untranslated region normally regulate poly(A) tail length. Therefore, more work is needed to clarify the mechanism by which PABPC1 mRNA translation and poly(A) tail length is controlled in cardiomyocytes.

The altered levels of PABPC1 suggested that it may facilitate a dynamic response to an increased workload being placed on the heart. Importantly, Chorghade et al. probed the functional relevance of altered PABPC1 levels and in doing so uncovered new avenues for exploration. Reducing PABPC1 levels in cultured neonatal mouse cardiomyocytes blocked the normal increase in protein synthesis and cell size associated with stimulus-induced growth: moreover, this effect that could be rescued with wild-type PABPC1, but not with mutant PABPC1.

In transgenic mice, the overexpression of PABPC1 in adult cardiomyocytes increased protein synthesis and heart size without any loss of cardiac function, similar to what happens in physiological hypertrophy (*Figure 1*). The transcriptional changes that accompanied these increases were also similar to physiological rather than pathological hypertrophy. Therefore, despite the level of PABPC1 increasing in models of both forms of hypertrophy, increased PABPC1 levels in cardiomyocytes do not appear sufficient to drive pathological hypertrophy.


Other types of cardiac cells, including endothelial cells and fibroblasts, proliferate during pathological hypertrophy and can influence the behaviour of cardiomyocytes (*Figure 1*; *Frieler and Mortensen, 2015*). Future research is needed to determine the extent to which PABPC1 levels in other cardiac cell types may be involved in this process.

In addition to adding to the growing body of evidence that translational control has a role in cardiac hypertrophy, the work of Chorghade et al. also greatly extends our knowledge of the physiological roles of PABPC1. Previous whole-organism studies of PABPC1 function in vertebrates were confined to the frog *X. laevis*, where it is essential for early embryonic development (*Gorgoni et al., 2011*).

Since these new results also showed that PABPC1 levels were highest in fetal and neonatal hearts (prior to hypertrophic growth), this suggests that PABPC1 might have a critical role in cell proliferation and/or the growth of heart tissue during heart development and maturation, as well as in adult cardiac hypertrophy. Thus, ascertaining its function in fetal and neonatal hearts in mammals is an exciting question for the future.

Finally, there is significant interest in invoking pathways that promote physiological cardiac hypertrophy as an alternative to the detrimental structural and functional "remodelling" of the heart that is associated with heart failure. The work of Chorghade et al. has opened a new window on our understanding of cardiac hypertrophy, and future research should reveal whether or not PABPC1 has potential as a therapeutic target for cardiovascular disease.

**Gillian A Gray** is in the BHF/University Centre for Cardiovascular Science, Queen's Medical Research Institute, University of Edinburgh, Edinburgh, United Kingdom

 <http://orcid.org/0000-0003-3104-3305>

**Nicola K Gray** is in the MRC Centre for Reproductive Health, Queen's Medical Research Institute, University of Edinburgh, Edinburgh, United Kingdom  
Nicola.Gray@ed.ac.uk

 <http://orcid.org/0000-0002-0413-1767>

**Competing interests:** The authors declare that no competing interests exist.

**Published** 27 June 2017

## References

- Bergmann O**, Zdunek S, Felker A, Salehpour M, Alkass K, Bernard S, Sjoström SL, Szewczykowska M, Jackowska T, Dos Remedios C, Malm T, Andrä M, Jashari R, Nyengaard JR, Possnert G, Jovinge S, Druid H, Frisén J. 2015. Dynamics of cell generation and turnover in the human heart. *Cell* **161**:1566–1575. doi: [10.1016/j.cell.2015.05.026](https://doi.org/10.1016/j.cell.2015.05.026), PMID: [26073943](https://pubmed.ncbi.nlm.nih.gov/26073943/)
- Charlesworth A**, Meijer HA, de Moor CH. 2013. Specificity factors in cytoplasmic polyadenylation. *Wiley Interdisciplinary Reviews: RNA* **4**:437–461. doi: [10.1002/wrna.1171](https://doi.org/10.1002/wrna.1171), PMID: [23776146](https://pubmed.ncbi.nlm.nih.gov/23776146/)
- Chorghade S**, Seimetz J, Emmons R, Yang J, Bresson SM, De Lisio M, Parise G, Conrad NK, Kalsotra A. 2017. Poly(A) tail length regulates PABPC1 expression to tune translation in the heart. *eLife* **6**:e24139. doi: [10.7554/eLife.24139](https://doi.org/10.7554/eLife.24139)
- Eliseeva IA**, Lyabin DN, Ovchinnikov LP. 2013. Poly(A)-binding proteins: structure, domain organization, and activity regulation. *Biochemistry* **78**:1377–1391. doi: [10.1134/S0006297913130014](https://doi.org/10.1134/S0006297913130014), PMID: [24490729](https://pubmed.ncbi.nlm.nih.gov/24490729/)

- Frieler RA**, Mortensen RM. 2015. Immune cell and other noncardiomyocyte regulation of cardiac hypertrophy and remodeling. *Circulation* **131**:1019–1030. doi: [10.1161/CIRCULATIONAHA.114.008788](https://doi.org/10.1161/CIRCULATIONAHA.114.008788), PMID: [25779542](https://pubmed.ncbi.nlm.nih.gov/25779542/)
- Gorgoni B**, Richardson WA, Burgess HM, Anderson RC, Wilkie GS, Gautier P, Martins JP, Brook M, Sheets MD, Gray NK. 2011. Poly(A)-binding proteins are functionally distinct and have essential roles during vertebrate development. *PNAS* **108**:7844–7849. doi: [10.1073/pnas.1017664108](https://doi.org/10.1073/pnas.1017664108), PMID: [21518916](https://pubmed.ncbi.nlm.nih.gov/21518916/)
- Heineke J**, Molkentin JD. 2006. Regulation of cardiac hypertrophy by intracellular signalling pathways. *Nature Reviews Molecular Cell Biology* **7**:589–600. doi: [10.1038/nrm1983](https://doi.org/10.1038/nrm1983), PMID: [16936699](https://pubmed.ncbi.nlm.nih.gov/16936699/)
- Maillet M**, van Berlo JH, Molkentin JD. 2013. Molecular basis of physiological heart growth: fundamental concepts and new players. *Nature Reviews Molecular Cell Biology* **14**:38–48. doi: [10.1038/nrm3495](https://doi.org/10.1038/nrm3495), PMID: [23258295](https://pubmed.ncbi.nlm.nih.gov/23258295/)
- Pinto AR**, Ilinykh A, Ivey MJ, Kuwabara JT, D'Antoni ML, Debuque R, Chandran A, Wang L, Arora K, Rosenthal NA, Tallquist MD. 2016. Revisiting cardiac cellular composition. *Circulation Research* **118**:400–409. doi: [10.1161/CIRCRESAHA.115.307778](https://doi.org/10.1161/CIRCRESAHA.115.307778), PMID: [26635390](https://pubmed.ncbi.nlm.nih.gov/26635390/)
- Smith RW**, Blee TK, Gray NK. 2014. Poly(A)-binding proteins are required for diverse biological processes in metazoans. *Biochemical Society Transactions* **42**:1229–1237. doi: [10.1042/BST20140111](https://doi.org/10.1042/BST20140111), PMID: [25110030](https://pubmed.ncbi.nlm.nih.gov/25110030/)
- Soonpaa MH**, Kim KK, Pajak L, Franklin M, Field LJ. 1996. Cardiomyocyte DNA synthesis and binucleation during murine development. *American Journal of Physiology* **271**:H2183–H2189. PMID: [8945939](https://pubmed.ncbi.nlm.nih.gov/8945939/)