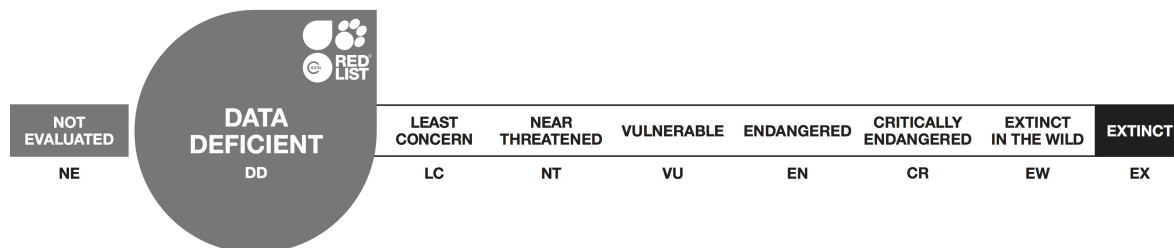


## *Hypsugo joffrei*, Joffre's Pipistrelle

Assessment by: Görföl, T., Francis, C.M., Bates, P.J.J. & Csorba, G.



View on [www.iucnredlist.org](http://www.iucnredlist.org)

**Citation:** Görföl, T., Francis, C.M., Bates, P.J.J. & Csorba, G. 2016. *Hypsugo joffrei*. *The IUCN Red List of Threatened Species 2016*: e.T17345A22127938. <http://dx.doi.org/10.2305/IUCN.UK.2016-3.RLTS.T17345A22127938.en>

**Copyright:** © 2016 International Union for Conservation of Nature and Natural Resources

*Reproduction of this publication for educational or other non-commercial purposes is authorized without prior written permission from the copyright holder provided the source is fully acknowledged.*

*Reproduction of this publication for resale, reposting or other commercial purposes is prohibited without prior written permission from the copyright holder. For further details see [Terms of Use](#).*

*The IUCN Red List of Threatened Species™ is produced and managed by the [IUCN Global Species Programme](#), the [IUCN Species Survival Commission \(SSC\)](#) and [The IUCN Red List Partnership](#). The IUCN Red List Partners are: [Arizona State University](#); [BirdLife International](#); [Botanic Gardens Conservation International](#); [Conservation International](#); [NatureServe](#); [Royal Botanic Gardens, Kew](#); [Sapienza University of Rome](#); [Texas A&M University](#); and [Zoological Society of London](#).*

*If you see any errors or have any questions or suggestions on what is shown in this document, please provide us with [feedback](#) so that we can correct or extend the information provided.*

## Taxonomy

Kingdom	Phylum	Class	Order	Family
Animalia	Chordata	Mammalia	Chiroptera	Vespertilionidae

**Taxon Name:** *Hypsugo joffrei* Thomas, 1915

**Synonym(s):**

- *Pipistrellus joffrei* (Thomas, 1915)

**Common Name(s):**

- English: Joffre's Pipistrelle

**Taxonomic Notes:**

The species may be conspecific with *anthonyi* (Csorba pers. comm.) in which case the name *joffrei* has the priority.

## Assessment Information

**Red List Category & Criteria:** Data Deficient [ver 3.1](#)

**Year Published:** 2016

**Date Assessed:** December 24, 2015

**Justification:**

Listed as Data Deficient as the species is known only from a few localities. It may have a wide distribution range, but nothing is known about its population size, ecology or threats.

**Previously Published Red List Assessments**

2008 – Data Deficient (DD) – <http://dx.doi.org/10.2305/IUCN.UK.2008.RLTS.T17345A7006975.en>

1996 – Critically Endangered (CR)

## Geographic Range

**Range Description:**

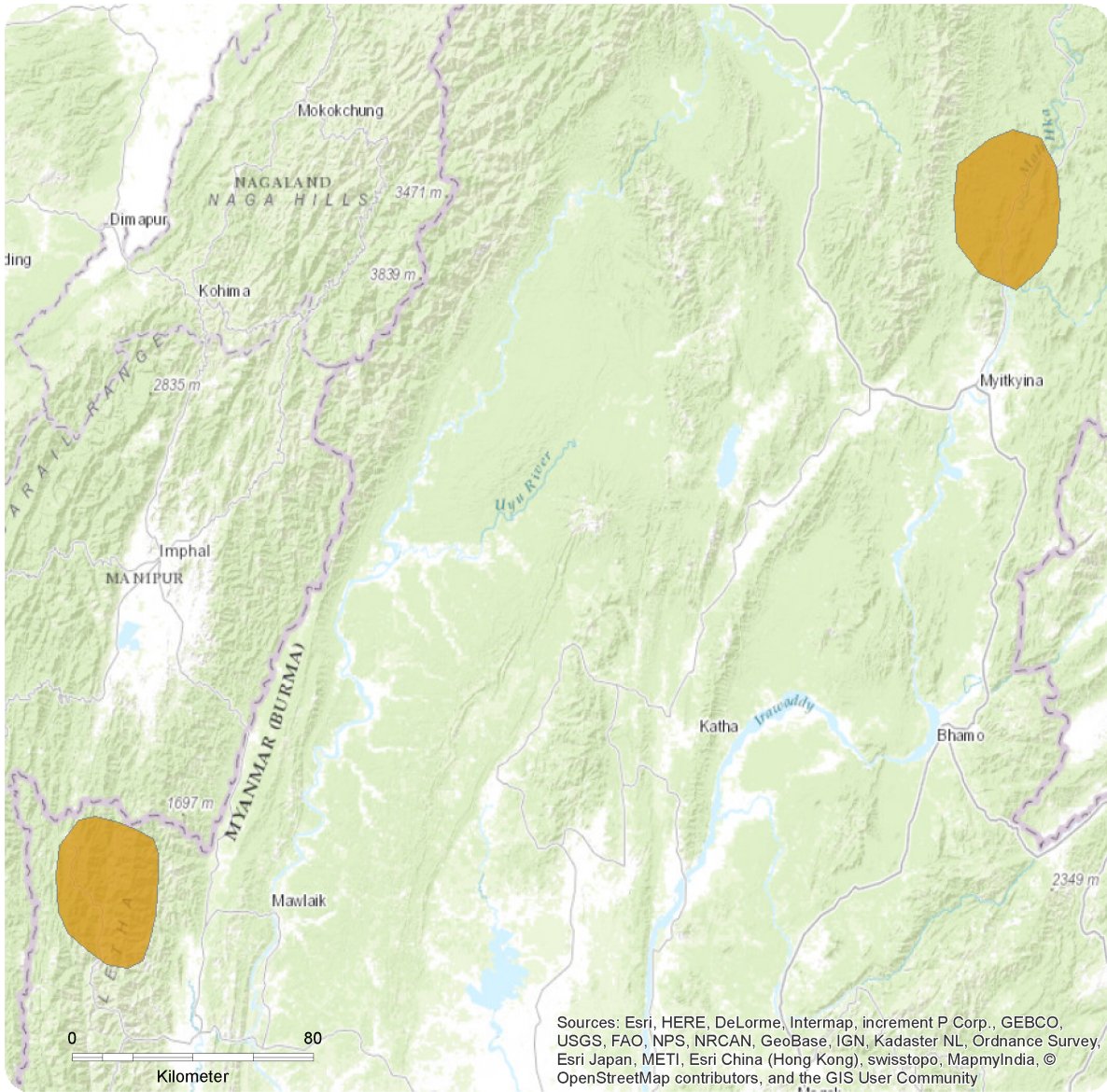
This species is only known from a few locations in northern Myanmar (Bates *et al.* 2005), India, Nepal (Csorba pers. comm.) and Vietnam (Kruskop and Shchinov 2010).

**Country Occurrence:**

**Native:** India; Myanmar; Nepal; Viet Nam

# Distribution Map

*Hypsugo joffrei*



**Range**

Extant (resident)

**Compiled by:**

IUCN (International Union for Conservation of Nature)



The boundaries and names shown and the designations used on this map do not imply any official endorsement, acceptance or opinion by IUCN.



## Population

This species is known only from a few records, hence the abundance and population are not known.

**Current Population Trend:** Unknown

## Habitat and Ecology (see Appendix for additional information)

This species has been collected from 'thick forest' in Myanmar (Bates *et al.* 2005). Three Vietnamese specimens were captured over a stream (1,900 m Asl) and one in the vicinity of a village (Kruskop and Shchinov 2010)

**Systems:** Terrestrial

## Threats

The threats to this species are not known.

## Conservation Actions (see Appendix for additional information)

It is not known if the species is present in any protected areas. Further studies are needed into the distribution, abundance, ecology and threats to this species.

## Credits

**Assessor(s):** Görföl, T., Francis, C.M., Bates, P.J.J. & Csorba, G.

**Reviewer(s):** Piraccini, R.

## Bibliography

Bates, J.J., Tin Nwe, Si Si Hla Bu, Khin Mie Mie, Khin Maung Swe, Nyo Nyo, Aye Aye Khaing, Nu Nu Aye, Yin Yin Toke, Naing Naing Aung, Mar Mar Thi and Mackie, I. 2005. A review of the genera *Myotis*, *Ia*, *Pipistrellus*, *Hypsugo*, and *Arielulus* (Chiroptera : Vespertilionidae) from Myanmar (Burma), including three species new to the country. *Acta Chiropterologica* 7(2): 205-236.

IUCN. 2016. The IUCN Red List of Threatened Species. Version 2016-3. Available at: [www.iucnredlist.org](http://www.iucnredlist.org). (Accessed: 07 December 2016).

Kruskop, S.V. and Shchinov, A.V. 2010. New remarkable bat records in Hoang Lien Son mountain range, northern Vietnam. *Russian Journal of Theriology* 9(1): 1-8.

Pacifici, M., Santini, L., Di Marco, M., Baisero, D., Francucci, L., Grottolo Marasini, G., Visconti, P. and Rondinini, C. 2013. Generation length for mammals. *Nature Conservation* 5: 87–94.

## Citation

Görföl, T., Francis, C.M., Bates, P.J.J. & Csorba, G. 2016. *Hypsugo joffrei*. *The IUCN Red List of Threatened Species 2016*: e.T17345A22127938. <http://dx.doi.org/10.2305/IUCN.UK.2016-3.RLTS.T17345A22127938.en>

## Disclaimer

To make use of this information, please check the [Terms of Use](#).

## External Resources

For [Images and External Links to Additional Information](#), please see the [Red List website](#).

# Appendix

## Habitats

(<http://www.iucnredlist.org/technical-documents/classification-schemes>)

Habitat	Season	Suitability	Major Importance?
1. Forest -> 1.6. Forest - Subtropical/Tropical Moist Lowland	-	Suitable	-

## Conservation Actions in Place

(<http://www.iucnredlist.org/technical-documents/classification-schemes>)

Conservation Actions in Place
In-Place Land/Water Protection and Management
Occur in at least one PA: Unknown

## Research Needed

(<http://www.iucnredlist.org/technical-documents/classification-schemes>)

Research Needed
1. Research -> 1.2. Population size, distribution & trends
1. Research -> 1.3. Life history & ecology
1. Research -> 1.5. Threats

## Additional Data Fields

Distribution
Estimated extent of occurrence (EOO) (km <sup>2</sup> ): 27467
Population
Population severely fragmented: No
Habitats and Ecology
Generation Length (years): 5.2

## The IUCN Red List Partnership



The IUCN Red List of Threatened Species™ is produced and managed by the [IUCN Global Species Programme](#), the [IUCN Species Survival Commission \(SSC\)](#) and [The IUCN Red List Partnership](#).

The IUCN Red List Partners are: [Arizona State University](#); [BirdLife International](#); [Botanic Gardens Conservation International](#); [Conservation International](#); [NatureServe](#); [Royal Botanic Gardens, Kew](#); [Sapienza University of Rome](#); [Texas A&M University](#); and [Zoological Society of London](#).