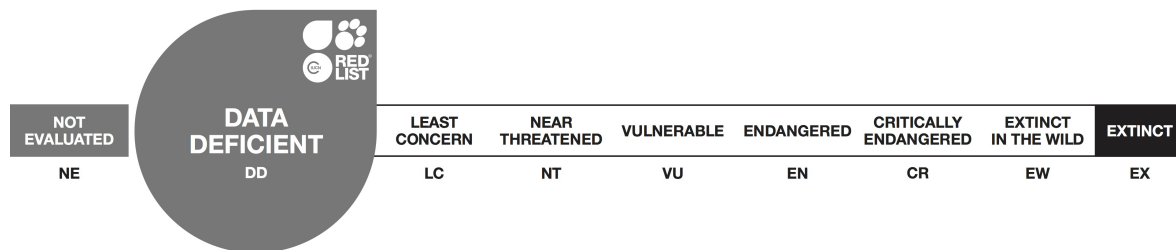


Myotis borneoensis, Bornean Whiskered Myotis

Assessment by: Görföl, T. & Csorba, G.



View on www.iucnredlist.org

Citation: Görföl, T. & Csorba, G. 2017. *Myotis borneoensis*. *The IUCN Red List of Threatened Species 2017*: e.T85568289A85568292. <http://dx.doi.org/10.2305/IUCN.UK.2017-2.RLTS.T85568289A85568292.en>

Copyright: © 2017 International Union for Conservation of Nature and Natural Resources

Reproduction of this publication for educational or other non-commercial purposes is authorized without prior written permission from the copyright holder provided the source is fully acknowledged.

Reproduction of this publication for resale, reposting or other commercial purposes is prohibited without prior written permission from the copyright holder. For further details see [Terms of Use](#).

The IUCN Red List of Threatened Species™ is produced and managed by the [IUCN Global Species Programme](#), the [IUCN Species Survival Commission \(SSC\)](#) and [The IUCN Red List Partnership](#). The IUCN Red List Partners are: [Arizona State University](#); [BirdLife International](#); [Botanic Gardens Conservation International](#); [Conservation International](#); [NatureServe](#); [Royal Botanic Gardens, Kew](#); [Sapienza University of Rome](#); [Texas A&M University](#); and [Zoological Society of London](#).

If you see any errors or have any questions or suggestions on what is shown in this document, please provide us with [feedback](#) so that we can correct or extend the information provided.

Taxonomy

Kingdom	Phylum	Class	Order	Family
Animalia	Chordata	Mammalia	Chiroptera	Vespertilionidae

Taxon Name: *Myotis borneoensis* Hill and Francis, 1984

Common Name(s):

- English: Bornean Whiskered Myotis

Taxonomic Source(s):

Görföl, T., Estók, P. and Csorba, G. 2013. The subspecies of *Myotis montivagus* – Taxonomic Revision And Species Limits (Mammalia: Chiroptera: Vespertilionidae). *Acta Zoologica Academiae Scientiarum Hungaricae* 59(1): 41–59.

Taxonomic Notes:

This taxon was generally regarded until recently as a subspecies of *M. montivagus* but was elevated to species rank based on morphology and morphometrics by Görföl *et al.* (2013).

Assessment Information

Red List Category & Criteria: Data Deficient [ver 3.1](#)

Year Published: 2017

Date Assessed: July 2, 2016

Justification:

This species is listed as Data Deficient as it is known only from a few specimens and we have very few information on its distribution, abundance, ecology or threats.

Geographic Range

Range Description:

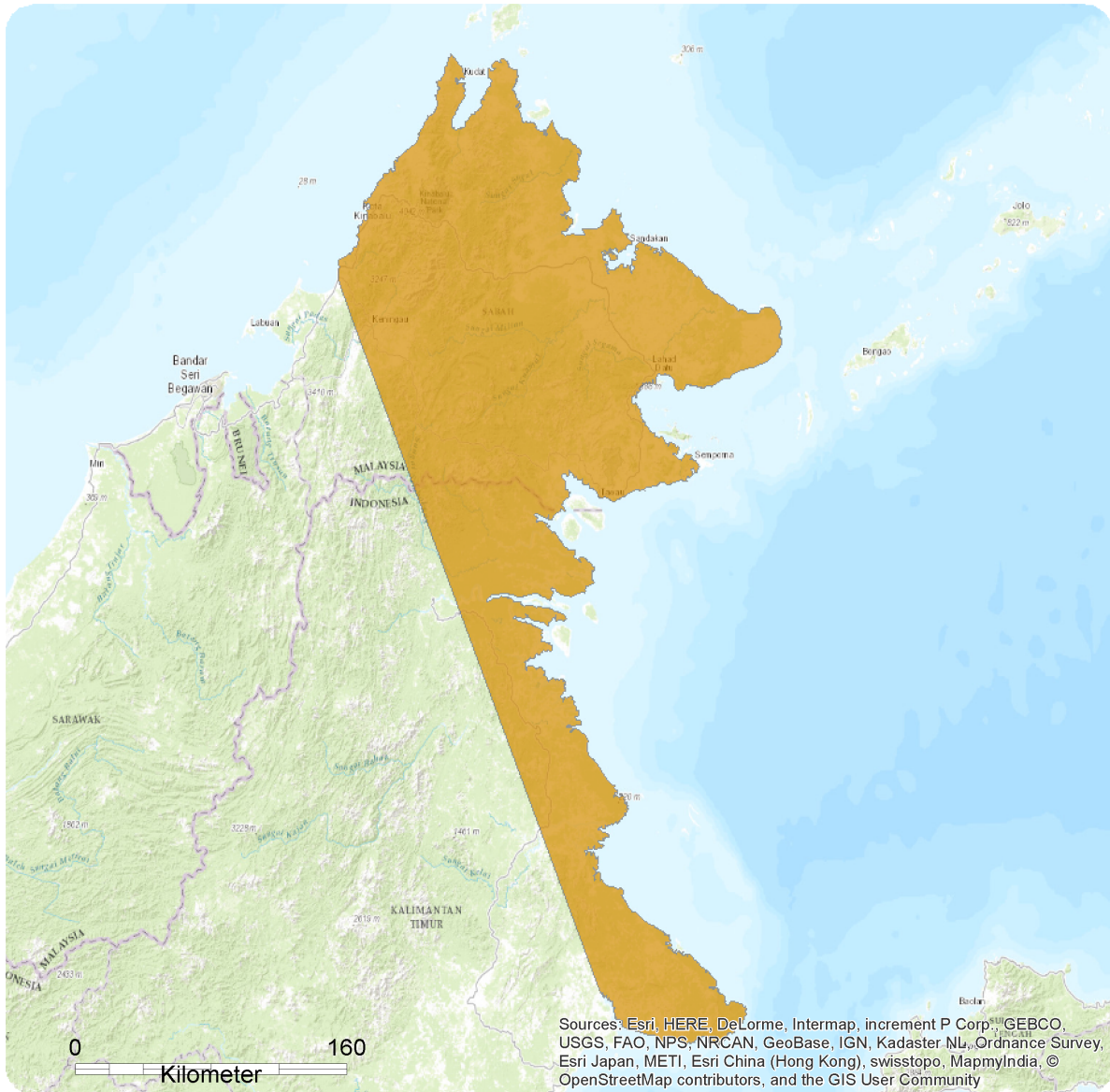
Myotis borneoensis is confined to Borneo. It occurs in Sabah, Malaysia (Hill and Francis 1984, Payne *et al.* 1985, Yasuma and Andau 2000 in Francis *et al.* 2008), Sarawak (Wilson *et al.* 2006), and also in Kalimantan, Indonesia (Suyanto and Struebig 2007).

Country Occurrence:

Native: Indonesia (Kalimantan); Malaysia (Sabah, Sarawak)

Distribution Map

Myotis borneoensis



Range

Extant (resident)

Compiled by:

IUCN (International Union for Conservation of Nature)



The boundaries and names shown and the designations used on this map do not imply any official endorsement, acceptance or opinion by IUCN.



Population

The species is known from only a handful of specimens from Borneo.

Current Population Trend: Unknown

Habitat and Ecology (see Appendix for additional information)

Payne *et al.* (1985) and Wilson *et al.* (2006) recorded the species alongside forest streams, whereas specimens collected in Kalimantan emerged from a cave in a karst area.

Systems: Terrestrial

Threats (see Appendix for additional information)

The species may be a cave-dweller (Görföl *et al.* 2013), hence the disturbance of caves is a threat to the species. It was captured in tall forest; logging of forests may be also a threat.

Conservation Actions (see Appendix for additional information)

No conservation actions are known to be in place for this species.

Credits

Assessor(s): Görföl, T. & Csorba, G.

Reviewer(s): Piraccini, R.

Bibliography

Görföl, T., Estók, P. and Csorba, G. 2013. The subspecies of *Myotis montivagus* – Taxonomic Revision And Species Limits (Mammalia: Chiroptera: Vespertilionidae). *Acta Zoologica Academiae Scientiarum Hungaricae* 59(1): 41–59.

Hill, J.E. and Francis, C.M. 1984. New bats (Mammalia: Chiroptera) and new records of bats from Borneo and Malaya. *Bulletin of the British Museum (Natural History), Zoology Series* 47: 303-329.

IUCN. 2017. The IUCN Red List of Threatened Species. Version 2017-2. Available at: www.iucnredlist.org. (Accessed: 14 September 2017).

Payne, J., Francis, C.M. and Phillipps, K. 1985. *A field guide to the mammals of Borneo*. The Sabah Society and WWF Malaysia, Kota Kinabalu and Kuala Lumpur, Malaysia.

Suyanto, A. and Struebig, M. J. 2007. Bats of the Sangkulirang limestone karst formations, East Kalimantan — a priority region for Bornean bat conservation. *Acta Chiropterologica* 9(1): 67-95.

Wilson, D.E., Helgen, K.M., Chin, S.Y. and Gimán B. 2006. Small mammal survey at two sites in planted forest zone, Bintulu, Sarawak. *Malayan Nature Journal* 52(2): 165-187.

Yasuma, S. and Andau, M. 2000. *Mammals of Sabah. Part-2. Habitat and ecology*. Japan International Cooperation Agency and Sabah Wildlife Department, Kota Kinabalu and Kuala Lumpur, Malaysia.

Citation

Görföl, T. & Csorba, G. 2017. *Myotis borneoensis*. *The IUCN Red List of Threatened Species 2017*: e.T85568289A85568292. <http://dx.doi.org/10.2305/IUCN.UK.2017-2.RLTS.T85568289A85568292.en>

Disclaimer

To make use of this information, please check the [Terms of Use](#).

External Resources

For [Images and External Links to Additional Information, please see the Red List website](#).

Appendix

Habitats

(<http://www.iucnredlist.org/technical-documents/classification-schemes>)

Habitat	Season	Suitability	Major Importance?
1. Forest -> 1.6. Forest - Subtropical/Tropical Moist Lowland	-	Suitable	-

Threats

(<http://www.iucnredlist.org/technical-documents/classification-schemes>)

Threat	Timing	Scope	Severity	Impact Score
5. Biological resource use -> 5.3. Logging & wood harvesting -> 5.3.5. Motivation Unknown/Unrecorded	Ongoing	Unknown	Unknown	Unknown
6. Human intrusions & disturbance -> 6.1. Recreational activities	Ongoing	Unknown	Unknown	Unknown

Conservation Actions in Place

(<http://www.iucnredlist.org/technical-documents/classification-schemes>)

Conservation Actions in Place
In-Place Land/Water Protection and Management
Occur in at least one PA: Unknown

Research Needed

(<http://www.iucnredlist.org/technical-documents/classification-schemes>)

Research Needed
1. Research -> 1.2. Population size, distribution & trends
1. Research -> 1.5. Threats

Additional Data Fields

Distribution
Lower elevation limit (m): 0

The IUCN Red List Partnership



The IUCN Red List of Threatened Species™ is produced and managed by the [IUCN Global Species Programme](#), the [IUCN Species Survival Commission \(SSC\)](#) and [The IUCN Red List Partnership](#).

The IUCN Red List Partners are: [Arizona State University](#); [BirdLife International](#); [Botanic Gardens Conservation International](#); [Conservation International](#); [NatureServe](#); [Royal Botanic Gardens, Kew](#); [Sapienza University of Rome](#); [Texas A&M University](#); and [Zoological Society of London](#).