

# Bedrock Geology of the New Haven (Iowa) 7.5' Quadrangle

## BEDROCK GEOLOGY OF THE NEW HAVEN 7.5' QUADRANGLE, MITCHELL COUNTY, IOWA

Iowa Geological Survey  
Open File Map OFM-15-3  
June 2015

Ryan Clark<sup>1</sup>, Hanbao Liu<sup>1</sup>, Philip Kerr<sup>1</sup>, Stephanie Tassier-Surine<sup>1</sup>, Robert Rowden<sup>2</sup>, and Matthew J. Streeter<sup>2</sup>

<sup>1</sup>Iowa Geological Survey, IHR-Hydroscience & Engineering, University of Iowa, Iowa City, Iowa



Iowa Geological Survey, Robert D. Libra, State Geologist

Supported in part by the U.S. Geological Survey  
Cooperative Agreement Number G14AC00229

National Cooperative Geologic Mapping Program (NCGMP)  
Completed under contract with the Iowa Department of Natural Resources



ACKNOWLEDGMENTS

Special thanks to Lindsey Falk of Falk Construction, Inc., An Weison, Dan Swann, and Uland Brothers for allowing us access to their properties. Zachary Thomsett and Austin Hubert of the Iowa Geological Survey (IGS) prepared well drilling samples for stratigraphic logging. Bill Hunter, Ray Anderson, Bob McKay, and Brian Witzke (IGS) provided valuable background information concerning the bedrock geology, geologic, and Devonian stratigraphy of the area. Bedrock maps adapted from Ray Anderson, 2010 coverage. Thanks also to Rick Langel (IGS) for managing the Iowa geologic sampling database (GEOSAM). Administrative support was provided by Megan Hunsberr, Teresa Gaffey, and Han Cao.

<sup>1</sup>Iowa Geological Survey, IHR-Hydroscience & Engineering, University of Iowa, Iowa City, Iowa  
<sup>2</sup>Iowa Department of Natural Resources, Des Moines, Iowa

### Introduction to the Bedrock Geology of the New Haven 7.5' Quadrangle, Mitchell County, Iowa

The New Haven Quadrangle lies within the Iowan Surface landform region (Prior, 1991; Prior and Kohrt, 2006). This area has been subjected to multiple periods of Quaternary glaciations and subaerial erosion providing a relatively low-relief terrain with moderately incised drainage valleys.

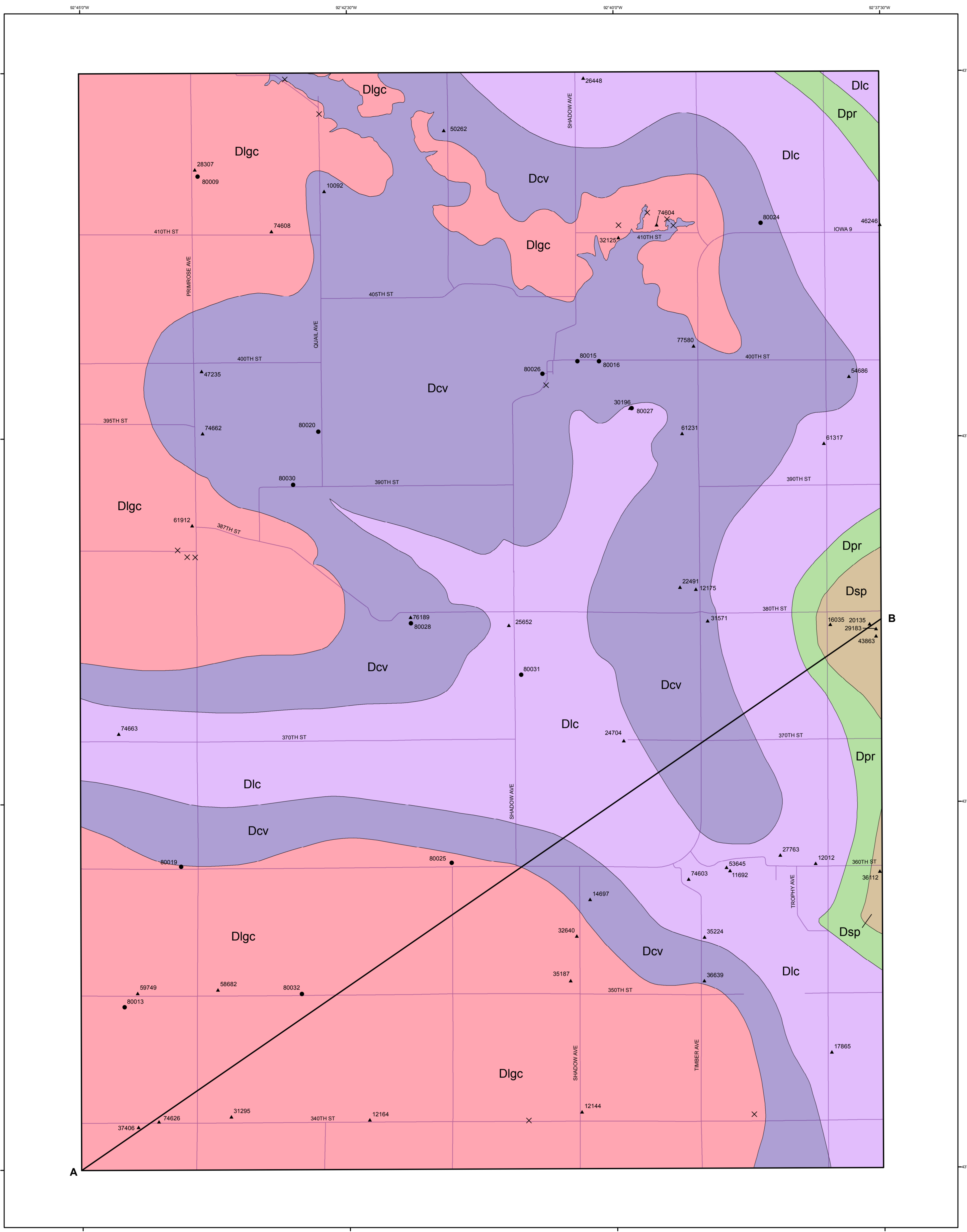
The thickness of Quaternary materials which overlies the Devonian bedrock surface, varies widely across the quadrangle. Where the Lithograph City Formation is at the bedrock surface, Quaternary cover ranges from 0 to 14 m (0 to 45 ft). However, several bedrock valleys exist within the quadrangle with the most prominent located along the eastern border where the thickness of Quaternary materials reaches a maximum of 84 m (275 ft). Shallow bedrock information from the soil survey in Mitchell County (Voy and Highland, 1975) was used for identifying potential bedrock outcrop locations during field mapping activities. Bedrock outcrops exist primarily along the Little Cedar River exposing Lithograph City and Coralville formations in the northern half of the quadrangle. A few sporadic outcrops appear along Beaver Creek and Burr Oak Creek, also in the northern half of the quadrangle. Rare outcrops of the Lithograph City Formation can be found in the southern part of the quadrangle as well. Subsurface information was mostly derived from the analysis of water well cutting samples repositied at the Iowa Geological Survey (IGS). Lithologic and stratigraphic information from these samples are stored in the online GEOSAM database of the IGGS. Well information from three quarters, 12 outcrops, and more than 110 private and public geologic information from the New Haven Quadrangle and surrounding area were used for bedrock geological mapping purposes.

Paleogeographically, the mapping area is within the northern portion of the Devonian Iowa Basin, a region of thickened shelf carbonate and shale deposits (Middle and lower Upper Devonian rocks form the major bedrock surface and upper bedrock aquifer in this area). The hydrogeology of Floyd and Mitchell counties has been well studied (e.g., Libra and Hallberg, 1985; Litra et al., 1994). Due to its stratigraphic completeness and rich fossil fauna, the stratigraphic and depositional environments of the Devonian Iowa Basin have been intensively studied (e.g., Day et al., 1992). Other important geologic and stratigraphic studies of this basin include Witzke and Bunker (1984 and 1985), Anderson (1984), Bunker et al. (1986), Witzke et al. (1988), Bunker (1995), and Groves et al. (2008). The bedrock surface of the surrounding area was recently mapped by Witzke et al. (2010), Liu et al. (2012 and 2014), and Rowden et al. (2014a and b). Results from these studies provided an important stratigraphic framework for this bedrock geologic map. The bedrock stratigraphic nomenclature and correlation for this map follows the stratigraphic framework proposed by Witzke et al. (1988).

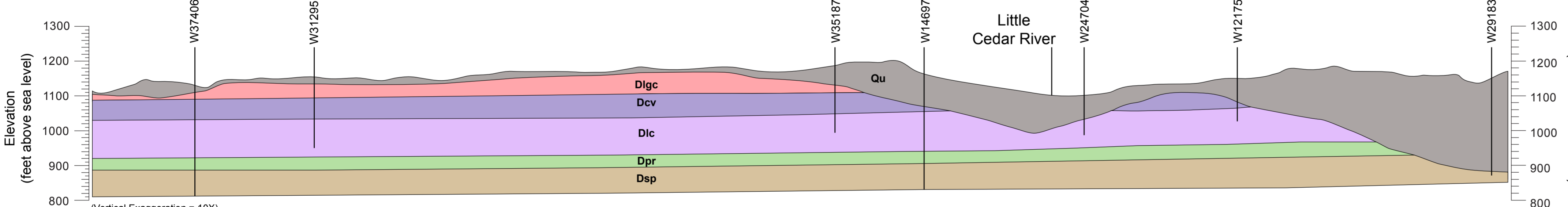
The entire mapping area is underlain by Devonian rocks comprised of carbonates, varying between limestone and dolomite, and shale based on lithologic features and fossils, the Devonian strata comprising the bedrock surface in the mapping area can be subdivided into, in descending order, the Lithograph City, Coralville, and Little Cedar formations of the Cedar Valley Group and the Pinicon Ridge and Spillville formations of the Wapsipicon Group. The Middle to Upper Devonian Lithograph City Formation is characterized by laminated lithologic and sublitographic limestone and dolomite "Birdseye", vugs, and calcite vug-fills are common in this formation. Some layers of this formation are fossiliferous with abundant brachiopods, most as molds, as well as some stromatoporoids and corals. The majority of bedrock outcrops within the mapping area are of the Lithograph City Formation. The maximum thickness of the Lithograph City Formation is about 14 m (45 ft) within the quadrangle. The Coralville Formation consists of limestone, dolomitic limestone, and dolomite; in part laminated and argillaceous Brachiopods, chondroid debris, and corals may be found within the limestone facies and occur as fossil molds within the dolomite facies. The Coralville Formation has an average thickness of about 12 to 20 m (40 to 65 ft). Together, the Lithograph City and Coralville formations dominate the bedrock surface in the New Haven Quadrangle. The Little Cedar Formation is characterized by slightly argillaceous to argillaceous dolomite and dolomitic limestone, usually vuggy or partially laminated and/or cherty. A moderate shale unit (Chickasaw Shale Member) occurs in the upper half of the formation and is relatively continuous across the quadrangle. The thickness of the Little Cedar Formation in the mapping area is approximately 37 m (120 ft). This unit occurs at the bedrock surface within the east-west trending bedrock valley near the middle of the quadrangle and along the slopes of the prominent bedrock valley along the eastern boundary of the mapping area. The Middle Devonian Wapsipicon Group consists of two formations in north-central Iowa including the Spillville and Pinicon Ridge, which were undifferentiated in previous mapping efforts. The Pinicon Ridge Formation consists of unfossiliferous dolomite and limestone exhibiting a wide variety of textures (shaly, laminated, brecciated, sandy, and cherty). The formation ranges from 9 to 15 m (30 to 50 ft) in thickness within the mapping area. The Pinicon Ridge Formation appears at the bedrock surface within the slope of the prominent bedrock valley along the eastern border of the quadrangle. The Spillville Formation is characterized by medium to thick bedded dolomite with scattered to abundant fossil molds. The basal unit of the formation, where present, is variably sandy, shaly, and/or conglomeratic with reworked chert clasts from the underlying Ordovician Maquoketa Formation. The Spillville Formation is restricted to the bedrock surface within the deepest parts of the prominent bedrock valley along the eastern margin of the mapping area and reaches a maximum thickness of 24 m (80 ft). Deep wells within the New Haven Quadrangle (W-37406, W-14697, and W-11692), along with previous research by Witzke and Bunker (1984) indicate that the Devonian bedrock units lie unconformably over older Ordovician units across the entire quad.

### References

- Anderson, W.I. (ed.), 1984. General geology of north-central Iowa. Guidebook for the 48<sup>th</sup> Annual Tri-State Geol. Field Conf., 150 p.
- Bunker, B.J., Witzke, B.J., and Day, J.E., 1986. Upper Cedar Valley Stratigraphy, North-Central Iowa, Lithograph City Formation. Geol. Soc. of Iowa Guidebook No. 44, 41 p.
- Bunker, B.J. (ed.), 1995. Geology and Hydrogeology of Floyd/Mitchell counties, north-central Iowa. Geol. Soc. of Iowa Guidebook No. 62, 114 p.
- Day, J.E. and Bunker, B.J. (eds.), 1992. The stratigraphy, paleontology, depositional and diagenetic history of the Middle-Upper Devonian Cedar Valley Group of central and eastern Iowa. Iowa Geological Survey Guidebook Series No. 16, 195 p., 3 parts.
- Groves, J.R., Walters, J.C., and Day, J. (eds.), 2008. Carbonate platform facies and faunas of the Middle and Upper Devonian Cedar Valley Group and Lime Creek Formation, northern Iowa. Iowa Geological Survey Guidebook No. 28, 96 p.
- Libra, R.D. and Hallberg, G.R., 1985. Part 1. Hydrogeologic observations from multiple core holes and piezometers in the Devonian-carbonate aquifers in Floyd and Mitchell counties, Iowa. Iowa Geological Survey Open File Report 85-2, p. 1-19, 5 figs., 6 tables.
- Libra, R.D., Quade, D.J., Hallberg, G.R., and Litke, J.P., 1994. Groundwater quality, hydrogeology, and agricultural drainage wells: Floyd and Mitchell Counties, Iowa. Iowa Geological Survey Bureau Technical Information Series No. 29, 64 p., 25 figs., and 6 tables.
- Liu, H., McKay, R., Rowden, R., Quade, D., Tassier-Surine, S., and Gagliano, J., 2012. Bedrock Geology of Worth County, Iowa. Iowa Geological and Water Survey Open File Map OFM12-1.
- Liu, H., McKay, R., Rowden, R., Clark, R., Tassier-Surine, S., Quade, D., Galer, M., and Streeter, M., 2014. Bedrock Geology of the Nora Springs 7.5' Quadrangle, Cerro Gordo, Mitchell, and Floyd Counties, Iowa. Iowa Geological Survey Open File Map OFM14-3.
- Prior, J.C., 1991. Landforms of Iowa. Univ. of Iowa Press Iowa City, 154 p.
- Prior, J.C. and Kohrt, C.J., 2006. The Landform Regions of Iowa, Iowa Geological Survey, digital map, available on the IDNR NRGIS Library.
- Rowden, R., McKay, R., Clark, R., Liu, H., Tassier-Surine, S., Quade, D., Galer, M., and Streeter, M., 2014a. Bedrock Geology of the Osage 7.5' Quadrangle, Mitchell County, Iowa. Iowa Geological Survey Open File Map OFM14-7.
- Rowden, R., McKay, R., Clark, R., Liu, H., Tassier-Surine, S., Quade, D., Galer, M., and Streeter, M., 2014b. Bedrock Geology of the St. Ansgar 7.5' Quadrangle, Mitchell County, Iowa. Iowa Geological Survey Open File Map OFM14-5.
- Voy, K.D. and Highland, J.D., 1975. Soil Survey of Mitchell County, Iowa. U.S. Dept. of Agriculture, Soil Conservation Service, 125 p., 70 map sheets.
- Witzke, B.J. and Bunker, B.J., 1984. Devonian stratigraphy of north-central Iowa. Iowa Geological Survey Open File Report 84-2, p. 107-149.
- Witzke, B.J. and Bunker, B.J., 1985. Part 2. Stratigraphic framework for the Devonian aquifers in Floyd and Mitchell Counties, Iowa. Iowa Geological Survey Open File Report 85-2, p. 21-32, 6 figs.
- Witzke, B.J., Bunker, B.J., and Rogers, F.S., 1988. Eifelian through lower Frasnian stratigraphy and deposition in the Iowa area, central midcontinent, U.S.A. In McMillan, N.J., Embry, A.F., and Glass, D.J. (eds.), Devonian of the World, Canadian Soc. of Petroleum Geologists, Memoir 14, vol. 1, p. 221-250.
- Witzke, B.J., Anderson, R.R., and Pope, J.P., 2010. Bedrock Geologic Map of Iowa, 1:500,000. Iowa Geological and Water Survey Open File Map OFM10-1.



### GEOLOGIC CROSS-SECTION A-B

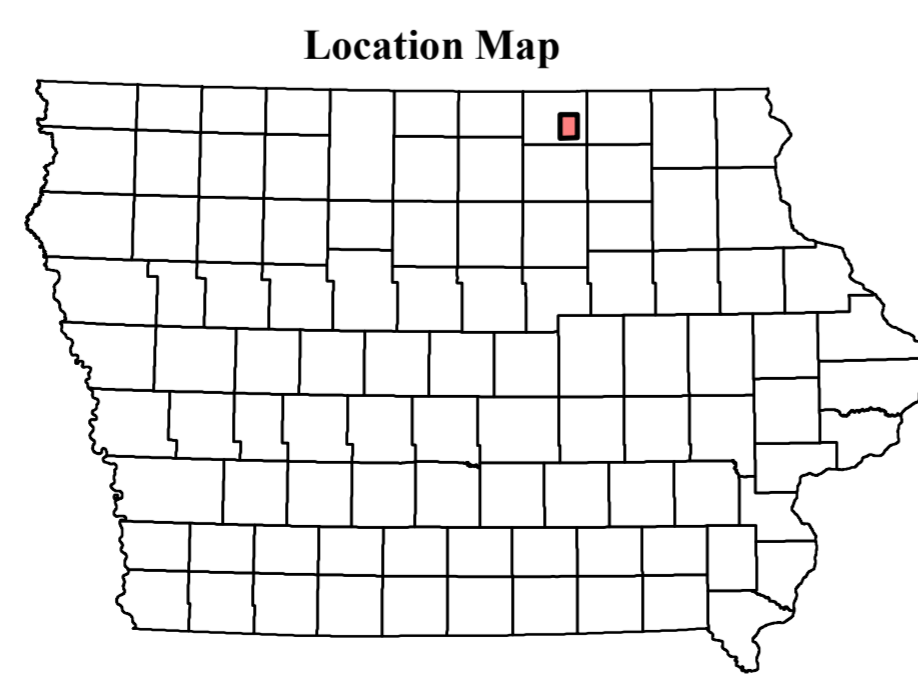
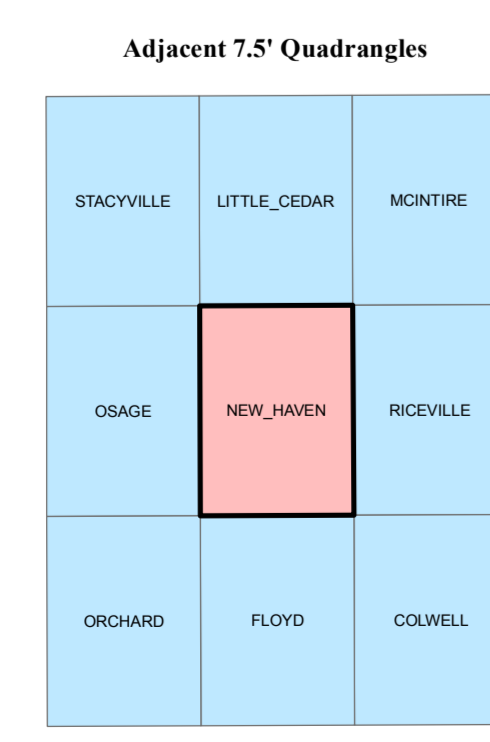


### LEGEND

- CENOZOIC**
- QUATERNARY SYSTEM**
- Qu - Unconsolidated Quaternary Sediments
- PALEOZOIC**
- DEVONIAN SYSTEM**
- Dlgc - Dolomite, Limestone, and Shale (Lithograph City Formation) Middle Devonian. Maximum thickness of up to 14 m (45 ft) within the mapping area. This unit consists of dolomite and limestone, partially laminated by shales of Devonian stratigraphic and sublitographic limestone and dolomite facies. In part argillaceous to argillaceous limestone, usually vuggy and partially laminated and/or cherty. Some strata are fossiliferous and conglomeratic with reworked chert clasts from the underlying Ordovician Maquoketa Formation. This unit occurs at the bedrock surface within the eastern margin of the mapping area.
  - Dcv - Limestone and Shale (Coralville Formation) Middle Devonian. Ranges from 12 to 20 m (40 to 65 ft) in thickness. This formation consists of limestone, dolomitic limestone, and dolomite. In part laminated and argillaceous Brachiopods, chondroid debris, and corals may be found within the limestone facies and occur as fossil molds within the dolomite facies. The Coralville Formation has an average thickness of about 12 to 20 m (40 to 65 ft). Together, the Lithograph City and Coralville formations dominate the bedrock surface in the New Haven Quadrangle.
  - Dic - Dolomite, Limestone, and Shale (Little Cedar Formation) Middle Devonian. Approximately 37 m (120 ft) thick. This unit is dominated by slightly argillaceous to argillaceous dolomite and dolomitic limestone, usually vuggy or partially laminated and/or cherty. A moderate shale unit (Chickasaw Shale Member) occurs in the upper half of the formation and is relatively continuous across the quadrangle. The thickness of the Little Cedar Formation in the mapping area is approximately 37 m (120 ft). This unit occurs at the bedrock surface within the east-west trending bedrock valley near the middle of the quadrangle and along the slopes of the prominent bedrock valley along the eastern boundary of the mapping area.
  - Dpr - Dolomite and Limestone (Pinicon Ridge Formation) Middle Devonian. Ranges from 9 to 15 m (30 - 50 ft) in thickness. This formation consists of unfossiliferous dolomite and limestone exhibiting a wide variety of textures (shaly, laminated, brecciated, sandy, and cherty). The formation ranges from 9 to 15 m (30 to 50 ft) in thickness within the mapping area. The Pinicon Ridge Formation appears at the bedrock surface within the slope of the prominent bedrock valley along the eastern border of the quadrangle.
  - Dsp - Dolomite (Spillville Formation) Middle Devonian. Maximum thickness of approximately 24 m (80 ft). This unit is dominated by medium to thick bedded dolomite with scattered to abundant fossil molds. The basal unit of the formation, where present, is variably sandy, shaly, and/or conglomeratic with reworked chert clasts from the underlying Ordovician Maquoketa Formation. The Spillville Formation is restricted to the bedrock surface within the deepest parts of the prominent bedrock valley along the eastern margin of the mapping area.
- Other Symbols:**
- 77202 - New Well Holes for this map project
  - 2839 - Outcrop
  - IGS GEOSAM Data Points - records available at www.iowageologicalsurvey.com
  - W9046 - Wells used for geologic cross-section

### Correlation of Map Units

AGE (Ma)	SYSTEM	SERIES	STAGE	MAP UNIT
2.588	QUATERNARY			Qu
382.7	DEVONIAN	Upper	Frasnian	Dlgc
387.7			Givetian	Dic
387.7			Eifelian	Dpr
393.3	DEVONIAN	Middle	Eifelian	Dsp



Base map from Iowa DOT Road map Layers 2006.  
Iowa Geological Survey digital cartographic file NewHaven\_BedrockGeology.mxd, version 6/30/15 (ArcGIS 10.3)  
Map projection and coordinate system based on Universal Transverse Mercator (UTM) Zone 15, datum NAD83.  
The map and cross section are based on interpretations of the best available information at the time of mapping. Map interpretations are not a substitute for detailed site specific studies.  
Research supported by the U.S. Geological Survey, National Cooperative Geologic Mapping Program, under USGS award number G14AC00229. The views and conclusions contained in this document are those of the authors and should not be interpreted as necessarily representing the official policies, either expressed or implied, of the U.S. Government.