

Bedrock Geology of the St. Ansgar (Iowa) 7.5' Quadrangle

BEDROCK GEOLOGY OF THE ST. ANSGAR 7.5' QUADRANGLE, MITCHELL COUNTY, IOWA

Iowa Geological Survey
Open File Map OFM-14-5
September 2014

Robert Rowden¹, Robert McKay², Ryan Clark³, Huanbo Liu⁴, Stephanie Tassier-Surine⁵, Deborah Quade⁶,
Rochelle Gale⁷, and Matthew T. Streeter⁸
¹Iowa Geological Survey, IBHR-Hydroscience & Engineering, University of Iowa, Iowa City, Iowa



Iowa Geological Survey, Robert D. Libra, State Geologist
Supported in part by the U.S. Geological Survey
Cooperative Agreement Number CE15AC00072
National Cooperative Geologic Mapping Program (NCGMP)

ACKNOWLEDGMENTS

Special thanks to Robert and Andrea Winger and Eric Klein, as well as the Crowl-Roth-Mo, Green-Linnwood, Harfield-Asphal, Mason-Hamlin, and the St. Ansgar (Iowa) geologic quadrangle. Michael Harlow, of the Iowa Department of Natural Resources (IDNR) provided digital topographic data. Iowa Geological Survey, Robert D. Libra, State Geologist (IDNR) provided digital topographic data. Iowa Geological Survey, Robert D. Libra, State Geologist (IDNR) provided digital topographic data. Iowa Geological Survey, Robert D. Libra, State Geologist (IDNR) provided digital topographic data.

Introduction to the Bedrock Geology of St. Ansgar 7.5' Quadrangle, Mitchell County, Iowa

The St. Ansgar quad lies within the Iowan Surface landform region (Prior, 1991 and Prior and Kohrt, 2006). This area has been subjected to multiple periods of Quaternary glaciations and subaerial erosion providing a relatively low-relief terrain with moderately incised drainage valleys.

The thickness of Quaternary materials varies from 0 to 10 m (0 to 40 ft) across the mapping area. Bedrock outcrops exist primarily along the Cedar River and its tributaries, Otter Creek, Deer Creek, and Turtle Creek. Several bedrock quarries located within the quad were also visited during field mapping activities. Subsurface information was mostly derived from the analysis of water well cutting samples repositied at the Iowa Geological Survey (IGS). Lithologic and stratigraphic information from these samples are stored in the online GEOSAM database of the IGS. Geologic information from a total of 26 outcrops and more than 90 private and public wells within the mapping area were used for bedrock geological mapping purposes. Shallow bedrock information from the soil survey in Mitchell County (Voy & Highland, 1975) was used for identifying potential bedrock outcrop locations during field mapping activities. Stratigraphic information from the surrounding area, including bedrock outcrops, quarries, and well samples, were also utilized for this mapping project.

Paleogeographically, the mapping area is within the northern portion of the Devonian Iowa Basin, a region of thickened shelf carbonate and shale deposits. Middle and lower Devonian rocks form the major bedrock surface and upper bedrock aquifer in this area. The hydrogeology of Floyd and Mitchell counties has been well studied by Libra and others (1994). Due to its stratigraphic completeness, the stratigraphy and depositional environments of the Devonian Iowa Basin have been intensively studied (e.g., Belanski, 1927, 1928; Koch, 1970). Recent geologic and stratigraphic studies of this basin include Witkie and Bunker (1984), Anderson (1984), Bunker and others (1986), Witkie and others (1988), Bunker (1995), and Groves and others (2008). Devonian stratigraphy at Mason City, Iowa, has also been discussed by McKay and Liu (2012). The bedrock surface of the surrounding areas recently mapped by Witkie and others (2010) and Liu and others (2010 & B, 2011 & C, 2012). Results from these studies provided an important stratigraphic framework for this bedrock geologic map. The bedrock stratigraphic nomenclature and correlation for this map follows the stratigraphic framework proposed by Witkie and others (1988).

The entire mapping area is underlain by Devonian rocks comprised of carbonates, varying between limestone and dolomite, and shale. Based on lithologic features and fossils, the Devonian strata comprising the bedrock surface in the mapping area can be subdivided into, in descending order, the Lithograph City, Coralville, and Little Cedar Formations. The middle to upper Devonian Lithograph City Formation dominates the bedrock surface within the mapping area and is characterized by laminated lithographic and sublithographic limestone and dolomite. "Birdseye", vugs, and calcite vug-fills are common in this formation. Some layers of this formation are fossiliferous with abundant brachiopods and stromatoloids. The majority of bedrock outcrops within the mapping area are of the Lithograph City Formation. The maximum thickness of the Lithograph City Formation is about 24 m (80 ft) within the St. Ansgar quad. The Coralville Formation consists of limestone, dolomite limestone, and dolomite, in part laminated and argillaceous. Brachiopods, schistoid debris, and corals may be found within the limestone facies. The Coralville Formation has an average thickness of about 12 to 18 m (40 to 60 ft) in the mapping area and occurs at the bedrock surface primarily within the core of the Cedar River valley and portions of the Otter Creek valley. The Little Cedar Formation is dominated by slightly argillaceous to argillaceous dolomite and dolomite limestone, usually vuggy or partially laminated and/or cherty. Moderate shale units also occur in this formation with the lower portion being commonly fossiliferous. The thickness of the Little Cedar Formation in the mapping area is approximately 40 m (130 ft). This unit is shown only on the cross-section, not on the map. Deep wells within the St. Ansgar quad (W-62090, W-66806, W-66808, W-66810) along with previous research by Witkie and Bunker (1984), indicate that the Devonian bedrock units lie unconformably over older Ordovician units across the entire quad.

Cited References:

Anderson, R.R., and Bunker, B.J. (eds), 1988. Fossil shells, glacial till, siltstone, and drainage wells: the geology of the Mason City, Iowa, area. Geol. Soc. of Iowa Guidebook No. 65, 71 p.
Anderson, W.J. (ed), 1984. General Geology of north-central Iowa. Guidebook for the 48th Annual Tri-State Geol. Field Conf., 150 p.
Belanski, C.H., 1927. The Shellock Stage of the Devonian. American Midland Naturalist, v. 10, p. 316-70.
Belanski, C.H., 1928. The Shellock Stage of the Devonian. Description of some typical fossils of the Shellock Stage. American Midland Naturalist, v. 11, p. 162-172.
Bunker, B.J., Witkie, B.J., and Day, J.E., 1988. Upper Cedar Valley Stratigraphy, North-Central Iowa, Lithograph City Formation. Geol. Soc. of Iowa Guidebook No. 44, 41 p.
Bunker, B.J. (ed), 1995. Geology and hydrogeology of Floyd/Mitchell counties, north-central Iowa. Geol. Soc. of Iowa Guidebook No. 62, 114 p.
Groves, J.R., Walters, J.C., and Day, J. (eds), 2008. Carbonate platform facies and faunas of the Middle and Upper Devonian Cedar Valley Group and Lime Creek Formation, northern Iowa. Iowa Geological Survey Guidebook No. 28, 96 p.
Koch, D.L., 1970. Stratigraphy of the Upper Devonian Shell Rock Formation of north-central Iowa. Iowa Geological Survey Report of Investigations 10, 123 p.
Libra, R.D., Quade, D.J., Hallberg, G.R., and Litke, J.P., 1994. Groundwater Quality, Hydrogeology, and Agricultural Drainage Wells: Floyd and Mitchell Counties, Iowa. Iowa Geological Survey Bureau Technical Information Series No. 29, 44 p., 25 figs., and 16 tables.
Liu, H., McKay, R.M., Quade, D., Tassier-Surine, S., and Gliglerano, J.D., 2010b. Bedrock Geology of the Mully 7.5' Quadrangle, Worth and Cerro Gordo Counties, Iowa, scale 1:24,000. Iowa Geological and Water Survey Open File Map OFM10-3.
Liu, H., McKay, R.M., Quade, D., Tassier-Surine, S., and Gliglerano, J.D., 2010c. Bedrock Geology of the Fertle SE 7.5' Quadrangle, Worth and Cerro Gordo Counties, Iowa, scale 1:24,000. Iowa Geological and Water Survey Open File Map OFM10-5.
Liu, H., McKay, R., Rowden, R., Quade, D., Tassier-Surine, S., and Gliglerano, J., 2011a. Bedrock Geology of the North NE 7.5' Quadrangle, Worth County, Iowa, scale 1:24,000. Iowa Geological and Water Survey Open File Map OFM11-1.
Liu, H., McKay, R., Rowden, R., Quade, D., Tassier-Surine, S., and Gliglerano, J., 2011b. Bedrock Geology of Northwood 7.5' Quadrangle, Worth County, Iowa, scale 1:24,000. Iowa Geological and Water Survey Open File Map OFM11-2.
Liu, H., McKay, R., Rowden, R., Quade, D., Tassier-Surine, S., and Gliglerano, J., 2012. Bedrock Geology of Worth County, Iowa. Iowa Geological and Water Survey Open File Map OFM12-1.
McKay, R.M. & Liu, H., 2012. Cedar Valley Group: the Lithograph City–Shellock Formation contact at Mason City, Iowa. Geol. Soc. of Iowa Guidebook No. 90, 12 p.
Prior, J.C., 1991. Landforms of Iowa. Univ. of Iowa Press, Iowa City, 154 p.
Prior, J.C., and Kohrt, C.J., 2006. The Landform Regions of Iowa. Iowa Geological Survey, digital map, available on the IDNR NRGIS Library.
Voy, K.D. & Highland, J.D., 1975. Soil Survey of Mitchell County, Iowa. U.S. Dept. of Agriculture, Soil Conservation Service, 125 p., 70 map sheets.
Witkie, B.J. and Bunker, B.J., 1984. Devonian stratigraphy of north-central Iowa. Iowa Geological Survey Open File Report 84-1, p. 107-149.
Witkie, B.J., Bunker, B.J., and Rogers, F.S., 1988. Eifelian through lower Frasnian stratigraphy and deposition in the Iowa area, central midcontinent, U.S.A. in McMillan, N.J., Embry, A.F., and Glass, D.J. (eds.) Devonian of the World, Canadian Soc. of Petroleum Geologists, Memoir 14, vol. 1, p. 221-250.
Witkie, B.J., Anderson, R.R., and Pope, J.P., 2010. Bedrock geologic map of Iowa, 1:500,000. Iowa Geological and Water Survey Open File Map OFM10-1.

LEGEND

CENOZOIC
QUATERNARY SYSTEM

QUATERNARY SYSTEM

QUATERNARY SYSTEM

QUATERNARY SYSTEM

QUATERNARY SYSTEM

QUATERNARY SYSTEM

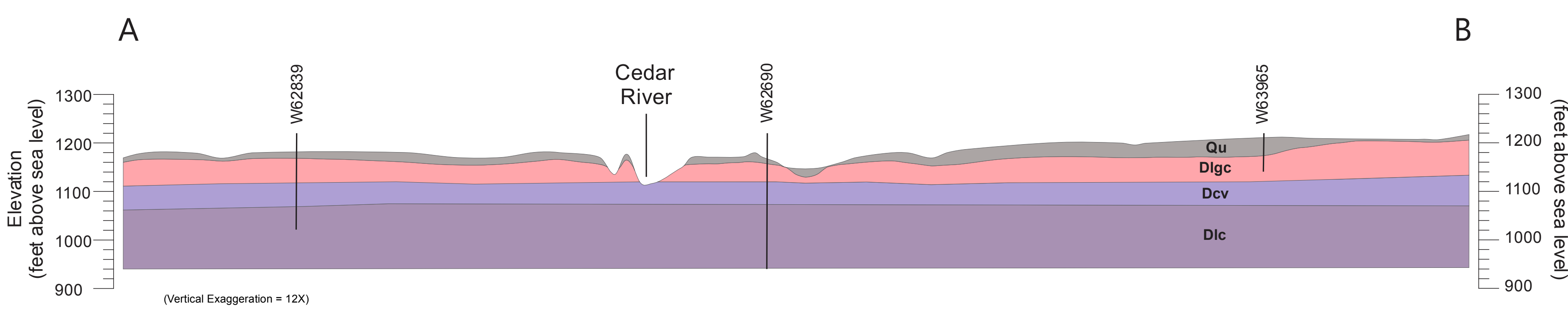
QUATERNARY SYSTEM

QUATERNARY SYSTEM

QUATERNARY SYSTEM

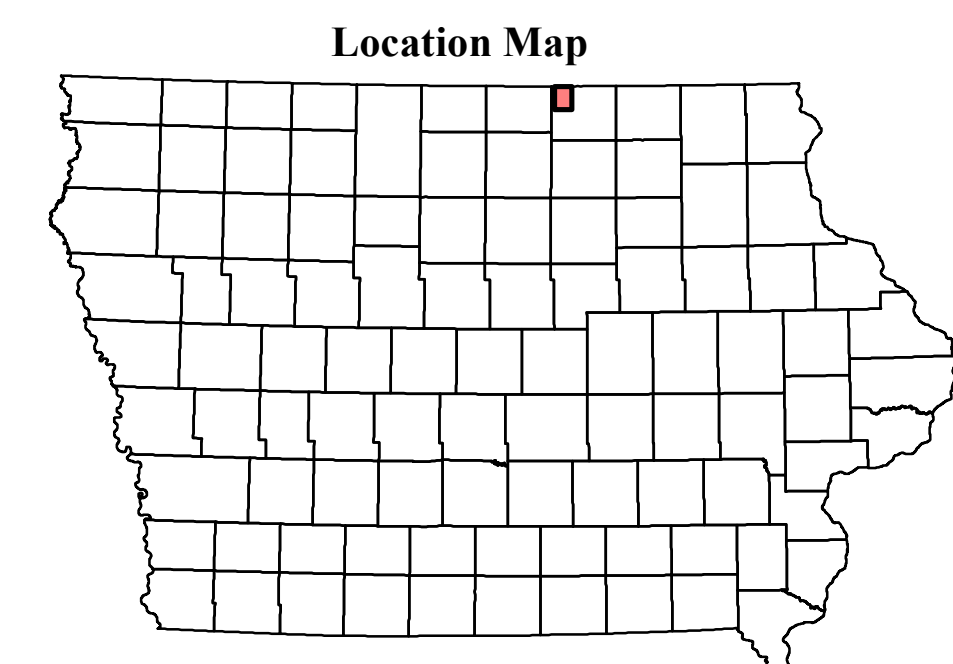
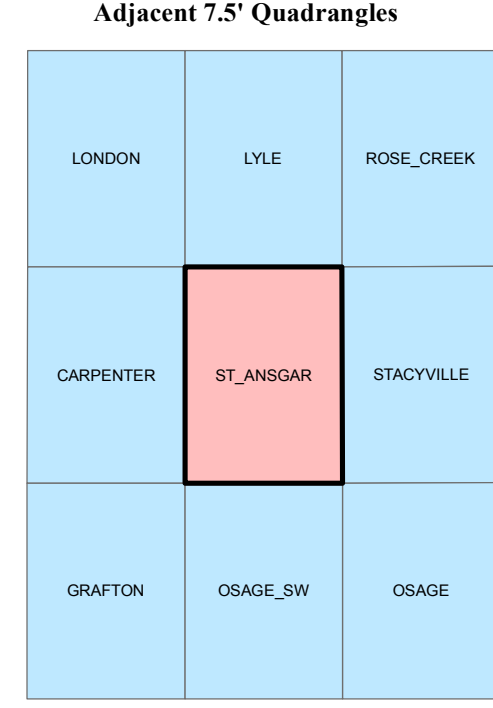
QUATERNARY SYSTEM

GEOLOGIC CROSS-SECTION A-B



Correlation of Map Units

AGE (Ma)	SYSTEM	SERIES	STAGE	MAP UNIT
2.588	QUATERNARY			Qu
382.7	DEVONIAN	Upper	Frasnian	Dlgc
			Givetian	Dcv
			Eifelian	
387.7				
393.3				



Base map from Iowa DOT Road map Layers 2006. Shaded relief from Iowa Lidar Project 2007-2011.
Iowa Geological Survey digital cartographic by Sturge, BedrockGeology.mxd, version 9/15/14. (ArcGIS 10.1) Map projection and coordinate system based on General Transverse Mercator (ITM Zone 16, datum NAD83).
The map and cross section are based on interpretations of the best available information at the time of mapping. Map interpretations are not a warranty for intended site specific studies.
Research supported by the U.S. Geological Survey, National Cooperative Geologic Mapping Program, under USGS award number CE15AC00072. The text and cartographic content of this document are those of the authors and do not necessarily represent the official position, either expressed or implied, of the U.S. Government.