

BEDROCK GEOLOGIC MAP OF IOWA

1:500,000

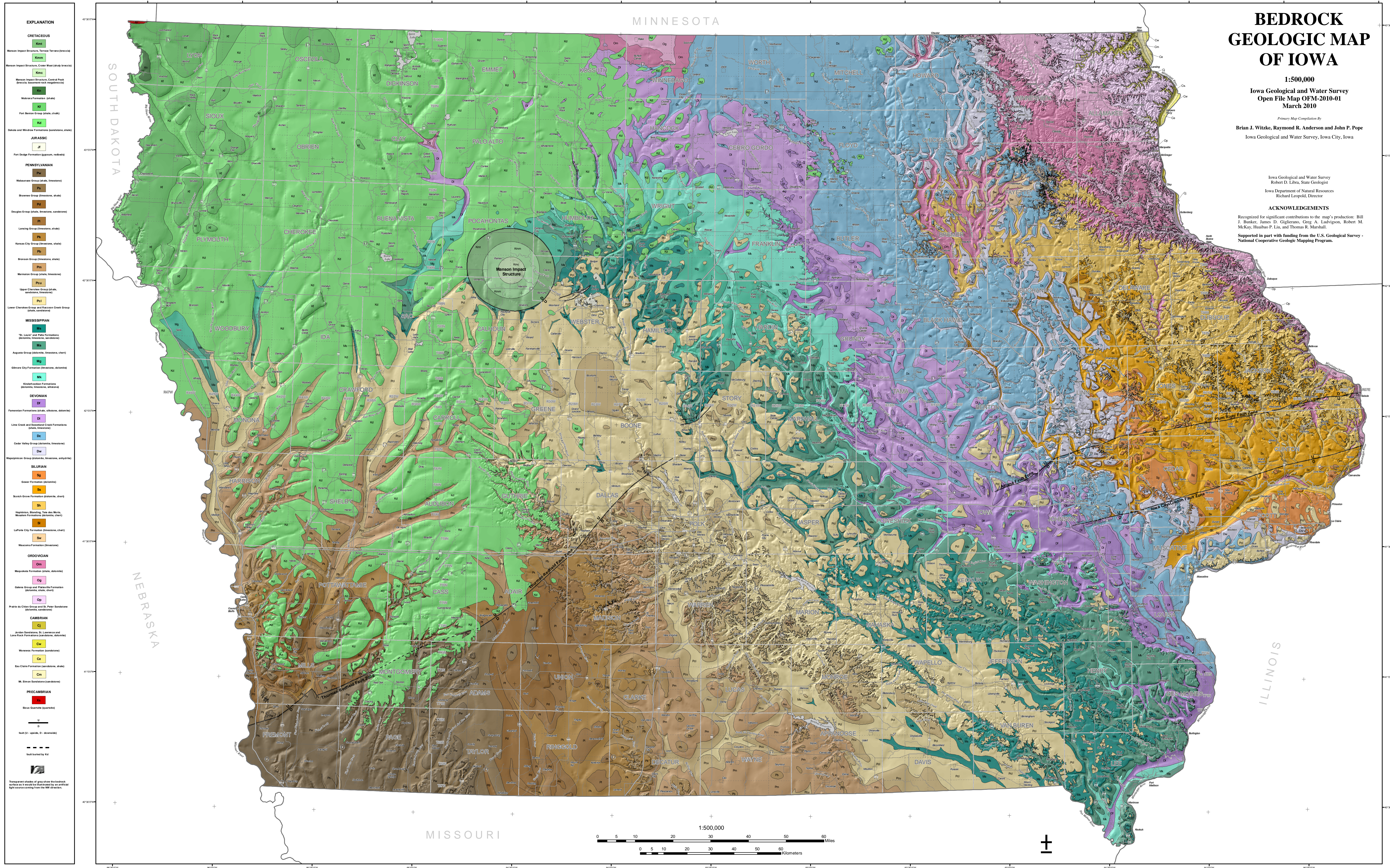
Iowa Geological and Water Survey
Open File Map OFM-2010-01
March 2010

Primary Map Compilation By
Brian J. Witzke, Raymond R. Anderson and John P. Pope
Iowa Geological and Water Survey, Iowa City, Iowa

Iowa Geological and Water Survey
Robert D. Libra, State Geologist
Iowa Department of Natural Resources
Richard Leopold, Director

ACKNOWLEDGEMENTS

Recognized for significant contributions to the map's production: Bill J. Bunker, James D. Giglietto, Greg A. Ludvigson, Robert M. McKay, Huibao P. Liu, and Thomas R. Marshall.
Supported in part with funding from the U.S. Geological Survey - National Cooperative Geologic Mapping Program.



EXPLANATION

CRETACEOUS

- Kmt Manson Impact Structure, Tertiary Terrane (breccia)
- Kmm Manson Impact Structure, Crater Moat (shaly breccia)
- Kmc Manson Impact Structure, Central Peak (breccia, basaltic rock impregnation)
- Km Holston Formation (shale)
- Kd Fort Benton Group (shale, chert)
- Kd Dakota and Winfield Formations (sandstone, shale)

JURASSIC

- Jf Fort Dodge Formation (limestone, redbeds)

PENNSYLVANIAN

- Pw Wabasha Group (shale, limestone)
- Pm Shawnee Group (limestone, shale)
- Pd Douglas Group (shale, limestone, sandstone)
- Pb Lansing Group (limestone, shale)
- Pc Hannan City Group (limestone, shale)
- Pn Bronson Group (limestone, shale)
- Pm Morrison Group (shale, limestone)
- Pcu Upper Cherokee Group (shale, sandstone, limestone)
- Pcl Lower Cherokee Group and Racoon Creek Group (shale, sandstone)

MISSISSIPPIAN

- Mu "St. Louis" and Pella Formations (dolomite, limestone, sandstone)
- Mg Argonne Group (dolomite, limestone, chert)
- Mg Gilmore City Formation (limestone, dolomite)
- Mk Middle Cambrian (dolomite, limestone, siliceous)

DEVONIAN

- Df Farnham Formations (shale, siliceous, dolomite)
- Di Line Creek and Reservoir Creek Formations (shale, limestone)
- Dv Cedar Valley Group (dolomite, limestone)
- Dw Wapsiegan Group (dolomite, limestone, anthracite)

SILURIAN

- Sg Glenora Formation (dolomite)
- Ss Scotch Grove Formation (dolomite, chert)
- Sh Hopkins, Standing, Tea, and Mott, Madison Formations (dolomite, chert)
- Sw LaPore City Formation (limestone, chert)
- Sw Waucoma Formation (limestone)

ORDOVICIAN

- Om Maquoketa Formation (shale, dolomite)
- Og Osborn Group and Potosi Formation (dolomite, shale, chert)
- Op Prairie du Chien Group and St. Peter Sandstone (limestone, sandstone)

CAMBRIAN

- Cw Jordan Sandstone of Laramie and Lone Rock Formations (sandstone, dolomite)
- Ce Waverock Formation (sandstone)
- Cc Elk Creek Formation (sandstone, shale)
- Cm Mt. Simon Sandstone (sandstone)

PRECAMBRIAN

- Mt. Beulah (granite)
- U Unit (U - upper, D - downwash)
- Fault buried by Kd

Transparent shades of gray show the bedrock surface as viewed by illustration by an artificial light source coming from the NW direction.

