

Bedrock Geology of the Gilbertville (Iowa)


7.5' Quadrangle

**BEDROCK GEOLOGY OF
THE GILBERTVILLE 7.5' QUADRANGLE,
BLACK HAWK COUNTY, IOWA**

Iowa Geological and Water Survey
Open File Map OFM-11-43
September 2011

prepared by
Robert Rowden, Robert McKay, Huabao Liu, Stephen Tasser-Surine, Deb Quade, and James Giffinger

Iowa Geological and Water Survey, Iowa City, Iowa

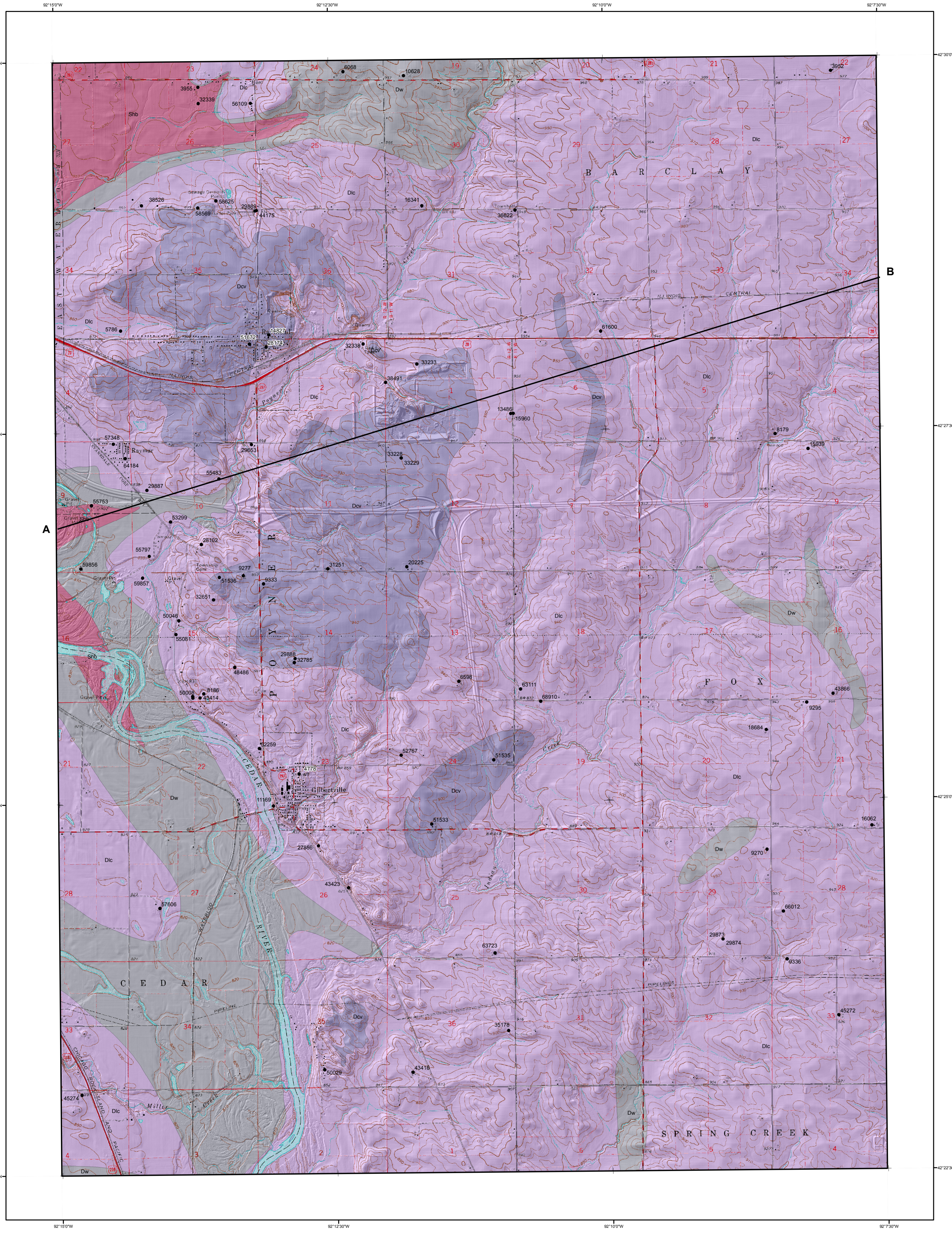


Iowa Department of Natural Resources, Roger Laska, Director
Iowa Geological and Water Survey, Robert D. Laska, State Geologist

Supported in part by the U.S. Geological Survey
Cooperative Agreement Number G15AC0021
National Cooperative Geologic Mapping Program (STATSMAP)

ACKNOWLEDGMENTS

Special thanks to Sherman Family of BMC, Aggrigate and Leo Pire of Paul Norman Contractors for allowing us access to their property. Steve Schaefer of Paul Norman Contractors for his assistance in field investigations and for providing field notes. Special thanks also to the staff of the Iowa Geological and Water Survey (IGWS) for their assistance in the field. Special thanks to the staff of the Iowa Geological and Water Survey (IGWS) for their assistance in the field. Special thanks to the staff of the Iowa Geological and Water Survey (IGWS) for their assistance in the field. Special thanks to the staff of the Iowa Geological and Water Survey (IGWS) for their assistance in the field.



Introduction to the Bedrock Geology of the Gilbertville 7.5' Quadrangle

The Gilbertville 7.5' Quadrangle within Black Hawk County, Iowa, is located in the south-central portion of the Iowa Surface landform region, which is characterized by various episodes of erosion before the Wisconsin glacial events (Piper, 1994).

The quadrangle area of Gilbertville is covered by various Quaternary glacial deposits with a maximum thickness of up to 427 m (1401 ft). Nine identifiable bedrock outcrops were found in the northwest portion of the quad near the towns of Raymond and Raymond during the field investigation. Subsurface information for the bedrock mapping was mostly derived from the analysis of water well materials and drill-hole information collected by the Iowa Geological and Water Survey (IGWS) and stored in the GEOSAM database of IGWS. A total of 80 private and public wells and 11 drill holes were reviewed within the quad. Bedrock information from surrounding quarries was also helpful in mapping the bedrock geology of the quad.

In the mapping area, Middle Devonian rocks form the major bedrock surface, and water wells are developed in both Devonian and Silurian rocks. Being part of a special depositional region within the Iowa Basin, the Devonian stratigraphy of the regional area has been intensively studied by IGWS staff (e.g., Belanski, 1927; Koch, 1970) and re-studied and correlated by Witzke and Bunker (1984), Witzke and others (1988), Anderson and Bunker (1998), Groves and others (2008), etc. Other studies in the area include Anderson and Garvin (1984) and Day and others (2006). The stratigraphic nomenclature and correlation in this map follow the stratigraphic framework proposed by Witzke and others (1988).

The youngest bedrock unit within the quad is the Devonian Coralville Formation, while the oldest rocks forming part of the bedrock surface are the Silurian Hopkinton and Blanding formations. The Devonian is dominated by carbonates varying between limestone and dolomite with accompanying minor shale. The Silurian is comprised of dolomite with varying amounts of chert and minor shale. Based on lithologic features and fossils, the Devonian rocks in the mapping area can be subdivided, in descending order, into the Coralville and Little Cedar formations and the Wapsipinnicon Group.

The Coralville Formation occurs mostly in the western half of the quad on bedrock highs and is characterized by a lower fossiliferous carbonate member with abundant marine fauna (Grazed Creek Member) and an upper carbonate dominated unit with laminated, brecciated, or evaporitic textures and some restricted marine faunas (Iowa City Member).

The Little Cedar Formation is the dominant bedrock surface unit in the quad and is characterized by fossiliferous dolomite and dolomitic limestone in the lower part and by sparsely fossiliferous to unfossiliferous dolomite, shale, and limestone (laminated to brecciated) in the upper part.

The Wapsipinnicon Group is dominated by laminated or brecciated, unfossiliferous limestone and dolomite that is sometimes sandy and cherty at its base. Within the quad, only the Pinicon Ridge Formation of the group is present, and it forms the bedrock surface in the deeper bedrock valleys.

The Silurian Hopkinton and Blanding formations are comprised of fossiliferous to vuggy dolomite that are cherty to very cherty with nodular to bedded chert in the upper part of the Blanding Formation. The Hopkinton rocks are generally more fossiliferous and less cherty than the underlying Blanding rocks. The Silurian rocks form the bedrock surface in the deeper parts of the bedrock valleys in the northwest and central western edge of the quad.

Ordovician Maquoketa Formation rocks do not occur at the bedrock surface within the quad, but directly underlie the Silurian rocks. The Maquoketa rocks include interbedded green to gray dolomitic shale and shaly dolomite with minor limestone, and are variably cherty and fossiliferous.

LEGEND

CENOZOIC

QUATERNARY SYSTEM

Qu - Undifferentiated unconsolidated sediment. Consists of loamy soils developed in loess and glacial till of variable thickness, and alluvial clay, silt, sand, and gravel. Total thickness can be up to 50 m (165 ft) in the bedrock valleys within the quad. This unit is shown only on a cross-section, not on the map.

PALEOZOIC

DEVONIAN SYSTEM

Dcv - Limestone and Dolomite (Coralville Formation) Middle Devonian. The thickness of this map unit varies between 0 and 10 m (0-32 ft) within the quad. The lower Grazed Creek Member is fossiliferous carbonate with abundant marine fauna and is dominated by dolomite and dolomitic limestone, becoming slightly argillaceous in part, with common calcite (flint) veins; the low diversity fauna are characterized by crinoid stems and brachiopods and rare gastropods and bryozoans. The upper Iowa City Member is carbonate dominated, with laminated, brecciated, or evaporitic textures and some restricted marine faunas; the restricted marine fauna is dominated by bivalved corals and/or branching and domal stromatopora. Stromatopora rich bryozoan intervals occur within and around the quad area.

Dlc - Dolomite and Limestone (Little Cedar Formation) Middle Devonian. The thickness of this map unit ranges from 0 to 10 m (0-100 ft) within the quad. The map unit is dominated by slightly argillaceous to argillaceous dolomite and dolomitic limestone, usually vuggy and partially laminated and/or cherty. This unit is commonly fossiliferous and brachiopods are especially abundant in lower portion. The upper portion (Iliatic Member) is an unfossiliferous lithologic or subs lithologic limestone or dolomitic limestone, with laminated, pitted, intracratic, and bedded fabrics.

Dw - Dolomite, Limestone, Shale, and minor Sandstone (Wapsipinnicon Group) Middle Devonian. This map unit consists only of the Pinicon Ridge Formation of the group, with a total thickness that varies from 0 to 25 m (0-75 ft) in the mapping area. It is dominated by laminated or brecciated, unfossiliferous limestone and dolomite that is sometimes sandy and cherty at its base.

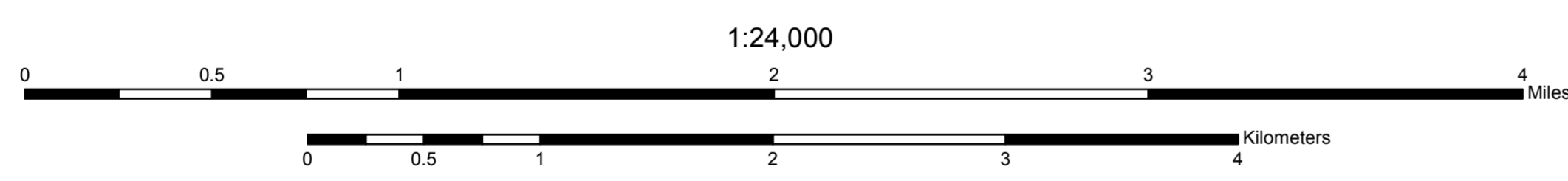
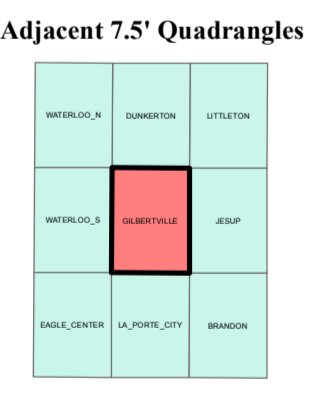
SILURIAN SYSTEM

Shb - Dolomite with Chert (Hoplinton and Blanding formations) Lower Silurian. The total thickness of the map unit is up to 49 m (160 ft). The unit is fossiliferous to vuggy dolomite and cherty to very cherty with nodular to bedded chert in the upper part of the Blanding Formation. Fossils include corals, brachiopods, and stromatopora. The Hopkinton rocks are generally more fossiliferous and less cherty than the underlying Blanding rocks.

ORDOVICIAN SYSTEM

Om - Shale and Dolomite (Maquoketa Formation) Upper Ordovician. The total thickness of the map unit is up to 91 m (300 ft). The unit is comprised of interbedded green to gray dolomite shale and shaly dolomite with minor limestone variably cherty and variably fossiliferous with brachiopod and graptolite; thin brown to gray dolomitic shale layers occur in lower 10 m (33 ft). This unit is shown only on the cross-section, not on the map.

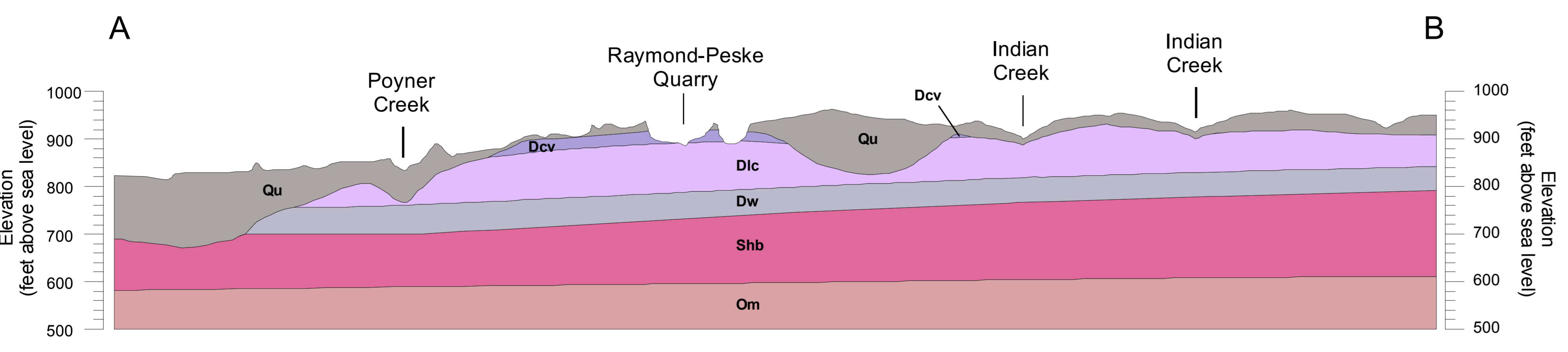
Wells
Drill Holes
Outcrops



Correlation of Map Units

AGE SYSTEM (Ma)	SERIES	STAGE	MAP UNIT
2.58	QUATERNARY		Qu
385	DEVONIAN	Upper	Frasnian
		Middle	Givetian
			Dvc
390		Dw	
395		Eifelian	
436	SILURIAN	LLandoverian	Aeronian
439			Shb
			Rhuddanian
445			Gamachian
450	ORDOVICIAN	Upper	Richmondian
		Cincinnatian	Om
			Maysvillian
			Edenian

GEOLOGIC CROSS-SECTION A-B



Base map from USGS Gilbertville 7.5' Digital Raster Graphic (IGS GIS file DRGRB28.TIF) which was scanned from the Gilbertville 7.5' Topographic Quadrangle map, published by US Geological Survey in 1972. Topographic contours and land features based on 1971 aerial photography, field checked in 1972. Land elevation contours (10' interval).

Iowa Geological and Water Survey digital cartographic file Gilbertville_BedrockGeology.mxd, version 9/28/11 (ArcGIS 10.0). Map projection and coordinate system based on Universal Transverse Mercator (UTM), Zone 16, datum NAD83.

The map and cross section are based on interpretations of the best available information at the time of mapping. Map interpretations are not a substitute for detailed site specific studies.