

## Preterm birth: can we do better?

Scott A. Sullivan MD,<sup>1</sup> Matthew Hoffman MD,<sup>2</sup> John Elliott MD<sup>3</sup>

**Keywords:** Preterm Birth, Progestins, Cervical length

### Abstract

Preterm birth (PTB) remains the most serious complication in obstetrics and a substantial excess burden in US healthcare economics. The etiology of PTB is complex and likely has multiple physiological pathways. Unfortunately, current antenatal care screening methods have not been successful in predicting and, eventually, preventing PTB.

Although treatments such as progesterone, cerclage and pessary are available for patients with historical risk factors and shortened cervix, these treatments are not universally efficacious. Antenatal care is in great need of new prediction and prevention strategies.

The role of more global methods of screening and treatment is still undefined. Most women with clinical risk factors will not deliver early, and aggressive interventions in large segments of the population may not be warranted or cost effective. Furthermore, over half of women who experience PTB have no historical risk factors. Even second-trimester cervical length (CL) has only modest ability to predict which women will experience PTB.

*There is thus a clear need to identify biomarkers that provide quantitative, individualized assessment of risk early in pregnancy that is specific for each individual woman. The ideal biomarkers would be indicative of the pathway leading to PTB, require no special testing equipment, have a low false positive and negative rate, and offer early identification, allowing adequate time to intervene. We need an aggressive and comprehensive approach to see a dramatic reduction in rates of preterm delivery in the U.S.*

<sup>1</sup>Division of Maternal-Fetal Medicine of the Department of Obstetrics & Gynecology at the Medical University of South Carolina, Charleston, SC.

<sup>2</sup>Department of Obstetrics and Gynecology and the Division of Education and Research for the Christiana Care Health System, Newark, DE.

<sup>3</sup>Maternal Fetal Medicine at Valley Perinatal Services and Banner Good Samaritan Medical Center in Phoenix, AZ.

Recent media reports have praised several states (Iowa, Virginia, Arkansas, Nevada and Oklahoma) for achieving

Please cite this paper as: Sullivan SA, Hoffman M, Elliott J. Preterm birth: can we do better? *Proc Obstet Gynecol.* 2016;6(3): Article 1 [ 17 p.]. Available from: <http://ir.uiowa.edu/pog/> full text article.

**Corresponding author:** Scott A. Sullivan, Division of Maternal-Fetal Medicine of the Department of Obstetrics & Gynecology at the Medical University of South Carolina, Charleston, SC. [sullivas@musc.edu](mailto:sullivas@musc.edu)

**Financial Disclosure:** The authors report no conflict of interest.

Received: 12 February 2016; accepted 9 May 2016; POG in Press, 9 October 2016.

Copyright: © 2016 Sullivan et al. This is an open-access article distributed under the terms of the Creative Commons Attribution License, which permits unrestricted use, distribution, and reproduction in any medium, provided the original author and source are credited.

reductions in the rate of preterm birth (PTB).<sup>1</sup> Though these reports represent progress, we must acknowledge that the current rate of 9.6% in the US, which is the highest among developed countries, is unacceptable, and that our current thinking about PTB requires revision.<sup>2</sup>

### **Preterm Birth as a Public Health Issue**

PTB remains the most serious complication in obstetrics and a substantial excess burden in US healthcare economics. In addition, it accounts for 85% of neonatal morbidity and mortality worldwide,<sup>3</sup> is a leading cause of death in children <5 years of age, is responsible for nearly 1 million deaths per year, and a leading cause of chronic disability, straining the Medicaid budgets of most states.<sup>4,5</sup> Persistent and wide disparities in PTB also exist, especially for Africa-American women.<sup>1</sup> The rate of PTB increased in the United States until 2006, is now declining slightly.

Currently, the average cost of a stay in a neonatal intensive care unit (NICU) exceeds \$10,000 for infants born at 34 weeks' gestation and is greater than \$100,000 for those born at 28 weeks or earlier.<sup>6</sup> In the United States, over \$26 billion per year is spent on PTB.<sup>7</sup> This estimate is likely low, as it does not include the costs of long-term care due to ongoing sequelae, which are significantly higher than the acute costs.<sup>7,8</sup> Children affected by the consequences of PTB may face ongoing intellectual impairments, learning difficulties, motor deficits, other chronic medical issues, and reduced prospects for employment. Economic analyses alone do not fully capture the emotional

and financial burdens to children and their families.

While some states and the March of Dimes are attempting to increase awareness of PTB, there is still insufficient media focus and public outcry about the emotional and financial costs and impact on society associated with PTB. Considering the serious consequences of PTB, public awareness of the problem is surprisingly low!

PTB may be spontaneous or iatrogenic, usually medically indicated. The recent downward trends of PTB rate has been weighted toward iatrogenic PTB and minimally impacted the early gestational age births, the children primarily born with short-term as well as long-term economic, physical, and emotional implications.

### **Challenges We Face**

The etiology of spontaneous PTB is complex and likely has multiple physiological pathways. Unfortunately, current antenatal care screening methods have not been successful in predicting and, eventually, preventing PTB. In the majority of cases of PTB, our current approach is usually limited to waiting for symptoms of preterm labor (PTL) to occur, attempting to decrease the frequency and strength of contractions, administering steroids and, if appropriate, transferring patients to facilities with high-level neonatal care. However, this focus on preterm labor (PTL) has met with limited success. Contractions, rupture of membranes, and labor are late events in the physiologic cascade leading to PTB.<sup>9</sup> Uterine activity may not be evident until

weeks after modulation of progesterone receptors, activation of decidua, overexpression of proinflammatory cytokines, and cervical remodeling have begun.<sup>9,10</sup> When uterine contractions or cervical changes are present, the physiologic process of PTB may have been ongoing for several weeks.

Although treatments such as progesterone, cerclage and pessary are available for patients with historical risk factors and shortened cervix, these treatments are not universally efficacious. Antenatal care is in great need of new prediction and prevention strategies.

Addressing individual risk factors alone is unlikely to make a large impact. In a review across 39 countries, the only effective interventions noted were smoking cessation, decreased number of embryo transfers during assisted reproduction, cerclage, progesterone, and reducing nonmedically-indicated deliveries.<sup>11</sup> However, application of these interventions proved to be of limited value. The expected overall change in the rate of PTB from using these interventions was calculated to result in a 0.52% decrease in the overall rate of PTB.

The role of more global methods of screening and treatment is still undefined. Petrini, et al., estimated that using current treatment strategies such as progesterone treatment in all women with a history of PTB would only lower the overall rate of PTB by 0.3%.<sup>12</sup> Most women with clinical risk factors will not deliver early, and aggressive interventions in large segments of the population may not be warranted or cost effective.<sup>13</sup> Furthermore, over half of

women who experience PTB have no historical risk factors. Even second-trimester cervical length (CL) has only modest ability to predict which women will experience PTB.<sup>13,14,15</sup>

There is thus a clear need to identify biomarkers that provide quantitative, individualized assessment of risk early in pregnancy that is specific for each individual woman. The ideal biomarkers would be indicative of the pathway leading to PTB, require no special testing equipment, have a low false positive and negative rate, and offer early identification, allowing adequate time to intervene.

In parallel, we must redouble our efforts to optimize current treatments, invest in development of new interventions and focus on incremental improvements in neonatal health and cost reduction. Although effective primary prevention has not yet been developed, secondary prevention (assessment of risk factors, screening for CL, and treatment of bacteriuria and other infections associated with PTB) and tertiary prevention (ensuring administration of corticosteroids and proximity to a NICU) are strategies still available. The ultimate measure of the benefit of an intervention is whether it: (1) improves the short-term and long-term health of the child, and (2) and lowers health care costs when applied to the general population.

## **Screening**

### *Clinical Risk Assessment*

The clinician's primary task is to ascertain the risk factors for PTB in the individual patient and address

preventable causes. Screening for risk factors from a woman's past medical, family and pregnancy history is inexpensive, requires no technology, and can begin at the preconception visit or the first prenatal visit.

The single most important risk factor for PTB and the one most likely to alter medical management is a history of a previous spontaneous PTB.<sup>16</sup> A woman with a single previous PTB has a 16% risk for PTB at <35 weeks' gestation.<sup>17</sup> A woman with 2 previous PTBs has a 41% risk for PTB, and a woman with 3 previous PTBs has a 67% risk. Family history of PTB is an additional risk factor, as is multiple gestation, 60% of whom experience PTB.<sup>18</sup>

Many historical, social, behavioral, and medical risk factors for PTB have been reported in the literature (Table 1).<sup>9,13,15,19-21</sup> Simple questions as part of the screening form may uncover modifiable risk factors, such as smoking and substance abuse, and social risk factors that can be addressed by offering adequate support services, which are readily available in most communities but not adequately accessed by women who would benefit from these services to modify risk. Of note, the majority of patients surveyed by the Pregnancy Risk Assessment Monitoring System who reported a need for help with domestic violence or substance abuse did not receive assistance for modifying this risk.<sup>22</sup>

Unfortunately, many risk factors apply to large proportions of the population and are too imprecise to be useful for guiding direct individual interventions, as most women who have them will not have PTB.<sup>23</sup> At present, risk factors

alone cannot effectively predict the risk for PTB among primigravidas. And even with more effective screening, it remains that all women are at risk for PTB, as evidenced by the fact that 50% of PTB occurs in women with no apparent risk factors for PTB.<sup>24</sup>

**Table 1. Risk Factors for Spontaneous Preterm Birth**

<i>Historical</i>
Personal history of preterm birth
Family history of preterm birth
Short inter birth interval
Cervical surgery
Recurrent first or second trimester loss
African descent
Maternal age
<i>Medical</i>
Maternal body mass index
Transfer of multiple embryos
Multiple gestation
Urinary tract infection
Cervicitis
Dental problems
Short cervical length
Vaginal bleeding
<i>Social</i>
Low socioeconomic status
Lack of social support
Domestic violence
Lack of food security
Poverty
High level of stress
Literacy
<i>Behavioral</i>
Smoking
Substance abuse
Recent change of domicile

### Cervical Length

Regular monitoring of CL has been suggested for women with a history of PTB, with cerclage placement offered based on CL.<sup>22,25,26,27,28</sup>

Universal CL screening at 18 to 20 weeks' gestation for women without risk factors for PTB is hotly debated.<sup>29-32</sup> Some authors have demonstrated a cost benefit for universal screening based on decision analyses<sup>30</sup> with the belief that early detection of cervical shortening may allow time for intervention before PTL begins. Although universal screening for CL is not currently recommended, it may be a reasonable way to screen women who do not have a prior pregnancy history. Even so, it fails to detect 26% of PTB cases.<sup>26</sup>

Universal CL screening is warranted if it results in better outcomes and lower costs. CL screening could be a major step toward identifying women who deliver preterm but have no risk factors. However, screening has several limitations. Most important, a change in CL indicates that the process of cervical ripening has already begun. Many women with a short cervix will not deliver early and thus will receive serial monitoring and interventions unnecessarily. The ultrasonographer must be trained and demonstrate expertise in measurement of CL. In addition, there are significant costs related to equipment and errors in interpretation. Ideally, a test that predicts PTB before a significant change in CL occurs would allow the most time for intervention.

### **Management**

#### Awareness

Many of our patients are unaware of the risk factors for or causes of PTB. Women can be highly motivated to avoid PTB but they do not always have adequate information. We can teach all patients, especially high-risk women, about the causes of PTB and the need for self-monitoring. Most women are not aware of their own level of risk for PTB, and risky behaviors may continue as a result of inadequate knowledge.<sup>33</sup> Based on screening assessments, we should provide each patient with her own personal risk for PTB and engage her as a proactive partner in preventing PTB.<sup>9</sup>

With better awareness of risk, physicians and patients are in a better position to target optimal weight management, and to tackle smoking cessation and avoidance of drugs and alcohol. As an example, aggressive programs for smoking cessation can include education and behavioral counseling, as well as pharmacological intervention.<sup>9,34,35</sup>

#### Progestins

Current recommendations of the American Congress of Obstetricians and Gynecologists (ACOG) include offering treatment with weekly injectable 17 alpha-hydroxyprogesterone-caproate (17-OHP) starting at 16 to 20 weeks' gestation for women with a history of PTB.<sup>36,37</sup> For women with a short cervix (< 15 mm), providing daily vaginal progesterone well before contractions or other symptoms of parturition begin may delay the onset of PTB.<sup>17</sup>

Progestins are currently our best intervention, but we still have much to learn about them. Even the basic mechanism of action is not well understood. Manuck, Lai et al. are evaluating methods for identifying women who are likely to respond to progesterone.<sup>38</sup> Remaining questions include the optimal dose, best vaginal preparation of progesterone (gel vs micronized), and effect of BMI on administration and effectiveness.<sup>39</sup>

### Cerclage

It has been recommended to offer prophylactic cerclage to women with a history of cervical insufficiency,<sup>40</sup> and offer ultrasonographically-indicated cerclage to women with a short cervix (<15mm) and a history of PTB.<sup>25,41</sup>

An alternative for patients who wish to avoid surgery or who are poor surgical candidates is a vaginal pessary. In a recent randomized trial, pessaries demonstrated similar effectiveness to cerclage and vaginal progesterone strategies in women with singleton pregnancy, previous spontaneous PTB and short cervix.<sup>42</sup> Unfortunately we do not have direct comparison trials between progesterone, cerclage and pessary for patients at risk.

### Care Management

Prematurity prevention programs have been investigated by several centers.<sup>24,43,44,45,46,47</sup> Increased contact with physicians and nurses in a specialized PTB clinic decreases the rate of PTB.<sup>48,49</sup> Compared with the current standard of care, a preterm prevention clinic resulted in prolongation of pregnancy by 1 week and reduction in

a measure of composite morbidity from 16.3% to 5.7%, illustrating that an aggressive, comprehensive approach in a collaborative model including the primary physician and maternal-fetal-medicine specialist can prolong pregnancy.<sup>50</sup>

Specialty prematurity prevention clinics are staffed by or offer access to social workers, case managers, nutritionists, genetic counselors, telemedicine providers, and other skilled individuals who can address issues related to adequate transportation, safe and affordable housing, domestic violence counseling, and obtaining prescription medications. This type of care management can ensure that patients are compliant with regular treatment and evidence-based interventions such as 17-OHP.<sup>51</sup> Among women on progestins, a simple check-in by telephone decreased the rate of PTB (<35 weeks) by 50%.<sup>49</sup> Case management based on Medicaid status reduced the rate of PTB at 24-28 weeks and reduced NICU days, saving millions of dollars.<sup>48</sup>

### Other Interventions

Screening for asymptomatic bacteriuria is required during pregnancy. Screening and eliminating cervicitis has also been shown to reduce PTB.<sup>52</sup>

For women in whom PTB appears imminent, effective interventions include corticosteroids for acceleration of fetal pulmonary maturation and MgSO<sub>4</sub> for neuroprotection for women between 24 and 32 weeks' gestation.<sup>53,54,55</sup> Tocolysis may be given for up to 48 hours to facilitate these treatments.<sup>56</sup>

Checking fetal fibronectin every 2 weeks from 24 to 32 weeks, in the highest risk patients, is not currently the standard of care, but may facilitate appropriate administration of corticosteroids when necessary.

## **The Future**

### Paradigm Shifts

Prenatal care has been traditionally focused on identifying and managing preeclampsia, which is less common than PTB. Introducing the same level of surveillance and care for prevention of PTB would entail asking patients at each visit about signs and symptoms such as back pain and cramping, and would entail increased visits in the mid-portion of pregnancy, rather than the end.

Insurance coverage and reimbursement strategies that favor improved neonatal outcomes could support changes in practice that emphasize early identification and treatment for women at risk for PTB. These might include 'Pay-for-Performance' initiatives aimed at improving quality, efficiency and value of care. They also include greater support for case management, pregnancy centering or other evidence-based care models. Value-based payment is accelerating with hospitals and health plans; it is likely a matter of time for similar models emphasizing value and outcomes to impact physician payments.

The ability to predict PTB early in the course of pregnancy could markedly improve neonatal outcomes. Time-intensive programs focusing on patient education and modification of risk

factors could be targeted to the correct population. Even if we cannot substantially decrease the rate of PTB, simply increasing the gestational age at which it occurs is likely to achieve the desired outcomes of reducing disability, improving neonatal outcomes, and decreasing costs associated with PTB.<sup>6,8, 55, 56</sup> Identifying patients who are at risk for PTB early will allow us to improve the availability of care by assuring proximity to a tertiary care center and giving antenatal corticosteroids and MgSO<sub>4</sub> for neuroprotection as needed.<sup>56</sup>

### Identifying High-Risk Women Early using Newly Developed Methods

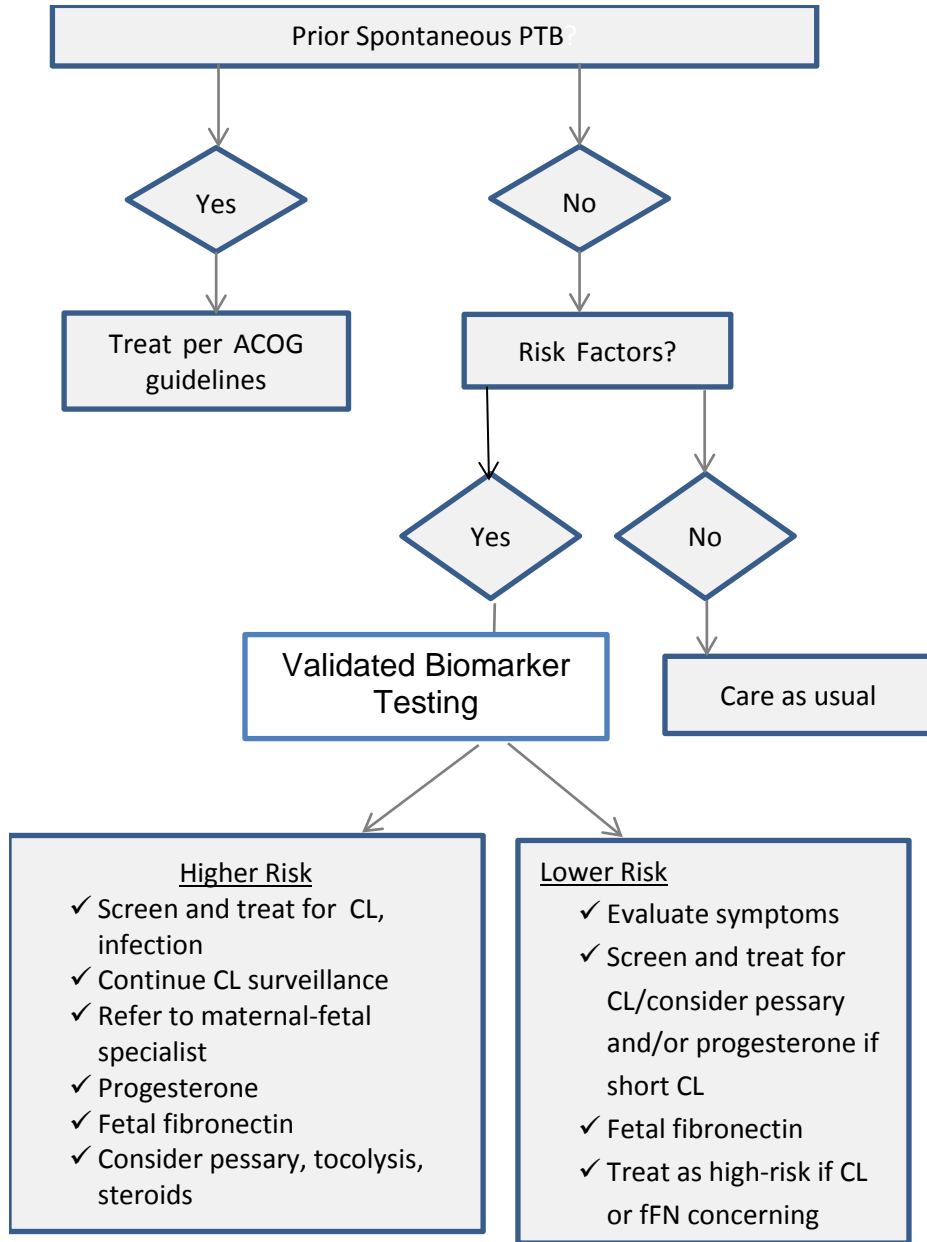
At present, for the majority of patients, we have no opportunity to intervene because risk factors for PTB are absent. Screening for demographic and clinical factors alone is not adequate. The appearance of symptoms of PTL is too late for most evidence-based interventions to be effective at stopping or delaying PTB, and tocolysis does not extend gestational age.<sup>9</sup> There are many opportunities for basic science investigations, including unanswered questions about chorioamnionitis, premature cervical ripening, genetic predisposition and other possible triggers for PTB. We must focus on early prediction and improved diagnostic techniques. An inexpensive and accurate way to detect women at risk remains a high priority.

Multi-marker serum proteomics is being developed to predict PTB during the second trimester.<sup>58</sup> Such a test could be combined with a treatment algorithm to classify women who require more intensive surveillance or interventions

(Figure 1).

Attempts to create prognostic models are ongoing but are only modestly

successful.<sup>3,59</sup> Early studies are exploring genomics as a predictor of PTB.<sup>60,61,62</sup>



**Figure 1. Treatment Algorithm for Focused Risk Management**

Developing accurate biomarkers would not only be clinically useful, but could speed the progress of research by limiting low-risk patients from clinical

trials. In the past, these studies have been diluted by inclusion of women unlikely to benefit from the interventions studied. If proteomic risk stratification is



successful, trials of treatments to prevent PTB and its consequences can enroll fewer subjects and be completed more economically and quickly. Studies of pharmacogenomics would also be possible.

In addition, several new clinical interventions are being studied. Atosiban is in use in Europe and is being explored as a tocolytic.<sup>63</sup> Early treatment of vaginal infections with antibiotics and the use of probiotics are likewise under investigation. Comparisons between pessary, cerclage and vaginal progestins are also underway.

### **Conclusions**

Celebration may be premature for the recent decrease in the rate of PTB. The results of our current treatments are inadequate. The recent small decrease in the rate of PTB is primarily related to changes in physician behavior and elective inductions.<sup>64</sup>

Can we do better? We can't keep doing what we are doing and expect success. We have to change behavior. With passionate advocacy and out-of-the-box strategy, we can do better. This was proven in France through implementation of an aggressive and comprehensive health policy for the prevention of preterm delivery directed at all pregnant women—not just women considered to be at high risk. With this aggressive and comprehensive approach, the proportion of deliveries before 37 weeks decreased from 8.2% in 1972 to 4.9% in 1988—a 41% reduction—and the proportion of deliveries before 34 weeks decreased from 2.4% in 1972 to .09% in 1988—a

96% reduction.<sup>65, 66</sup>

We need an aggressive and comprehensive approach to see a dramatic reduction in rates of preterm delivery in the U.S. The road to a primary prevention strategy is long. Until primary prevention is possible, we must treat PTB as a complex, multifactorial condition that demands multifaceted solutions:

- Identify at-risk patients early so that treatment can begin before late signs of parturition are observed. Aggressively screen every patient as early as possible, and provide her with an individualized assessment of risk.
- Study neonatal outcomes and costs rather than focusing on the overall rate of PTB. With the right interventions, we may find that simply prolonging pregnancy is sufficient to impact neonatal outcomes, lifelong sequelae, and costs of care.<sup>6,49</sup>
- Actively educate patients and engage them in their care.
- Use validated biomarker approaches to move toward early, patient-specific, risk-specific interventions.
- Individualize the frequency and content of prenatal visits to emphasize risk assessment and prevention of PTB.
- Reduce outcome disparities for minorities and disadvantaged communities

- Do the low-cost, low-technology, non-glamorous work of addressing modifiable risk factors: social support, smoking cessation, education, intensive case management, etc.
- Maximize use of current evidence-based interventions such as progesterone, cerclage, liberal use of CL, and continue to study which populations should receive screening and treatment.
- Build and retain local and regional community networks of obstetric providers and maternal-fetal-medicine specialists. Streamline referrals, create a suite of interventions and programs for coordinated, collaborative prevention of PTB, and provide resources for community physicians.
- Encourage funding agencies to allocate more resources to the study of prevention of PTB.
- Encourage patients and ACOG to lobby members of Congress for additional funding to study prevention of PTB.

*Our thanks to Mary Chandler, MD, for her editorial support in preparing this article.*

## References

1. March of Dimes. U.S. Preterm Birth Rate Hits Healthy People 2020 Goal Seven Years Early Nation Still Earns a "C" on March of Dimes Annual Premature Birth Report Card. 2015 Nov. Available at: <http://www.marchofdimes.org/news/us-preterm-birth-rate-hits-healthy-people-2020-goal-seven-years-early.aspx.ttp>
2. Hamilton BE, Martin JA, Ventura SJ. Births: preliminary data for 2012. Natl Vital Stat Rep. 2013 Sep;62(3):1-20. PubMed PMID: 24321416.
3. Norwitz ER, Caughey AB. Progesterone supplementation and the prevention of preterm birth. Rev Obstet Gynecol. 2011 Summer;4(2):60-72. PubMed PMID: 22102929.
4. World Health Organization. Preterm birth. Updated November 2014. Available at: <http://www.who.int>.
5. Gravett MG, Rubens CE; Global Alliance to Prevent Prematurity and Stillbirth Technical Team. A framework for strategic investments in research to reduce the global burden of preterm birth. Am J Obstet Gynecol. 2012 Nov;207(5):368-73. <http://dx.doi.org/10.1016/j.ajog.2012.09.008> Epub 2012 Sep 10. PubMed PMID: 22999156.
6. Phibbs CS, Schmitt SK. Estimates of the cost and length of stay changes that can be attributed to one-week increases in gestational age for premature infants. Early Hum Dev. 2006 Feb;82(2):85-95. <http://dx.doi.org/10.1016/j.earlhumdev.2006.01.001> Epub 2006 Feb 3. PubMed PMID: 16459031.
7. Societal costs of preterm birth. In: Behrman RE, Butler AS, editors. Preterm Birth: Causes, Consequences, and Prevention. National Academies Press; 2007. <http://www.ncbi.nlm.nih.gov/books/NBK11358/>

8. Blencowe H, Cousens S, Oestergaard MZ, Chou D, Moller AB, Narwal R, Adler A, Vera Garcia C, Rohde S, Say L, Lawn JE. National, regional, and worldwide estimates of preterm birth rates in the year 2010 with time trends since 1990 for selected countries: a systematic analysis and implications. *Lancet*. 2012 Jun 9;379(9832):2162-72. [http://dx.doi.org/10.1016/S0140-6736\(12\)60820-4](http://dx.doi.org/10.1016/S0140-6736(12)60820-4) PubMed PMID: 22682464.
9. Iams JD, Berghella V. Care for women with prior preterm birth. *Am J Obstet Gynecol*. 2010 Aug;203(2):89-100. <http://dx.doi.org/10.1016/j.ajog.2010.02.004> Epub 2010 Apr 24. PubMed PMID: 20417491.
10. Campbell S. Universal cervical-length screening and vaginal progesterone prevents early preterm births, reduces neonatal morbidity and is cost saving: doing nothing is no longer an option. *Ultrasound Obstet Gynecol*. 2011 Jul;38(1):1-9. <http://dx.doi.org/10.1002/uog.9073> PubMed PMID: 21713990.
11. Chang HH, Larson J, Blencowe H, Spong CY, Howson CP, Cairns-Smith S, Lackritz EM, Lee SK, Mason E, Serazin AC, Walani S, Simpson JL, Lawn JE; Born Too Soon preterm prevention analysis group. Preventing preterm births: analysis of trends and potential reductions with interventions in 39 countries with very high human development index. *Lancet*. 2013 Jan 19;381(9862):223-34. [http://dx.doi.org/10.1016/S0140-6736\(12\)61856-X](http://dx.doi.org/10.1016/S0140-6736(12)61856-X) Epub 2012 Nov 16. PubMed PMID: 23158883
12. Petrini JR, Callaghan WM, Klebanoff M, Green NS, Lackritz EM, Howse JL, Schwarz RH, Damus K. Estimated effect of 17 alpha-hydroxyprogesterone caproate on preterm birth in the United States. *Obstet Gynecol*. 2005 Feb;105(2):267-72. <http://dx.doi.org/10.1097/01.AOG.0000150560.24297.4f> PubMed PMID: 15684150.
13. Dekker GA, Lee SY, North RA, McCowan LM, Simpson NA, Roberts CT. Risk factors for preterm birth in an international prospective cohort of nulliparous women. *PLoS One*. 2012;7(7):e39154. <http://dx.doi.org/10.1371/journal.pone.0039154> Epub 2012 Jul 16. PubMed PMID: 22815699.
14. Fonseca EB, Celik E, Parra M, Singh M, Nicolaides KH; Fetal Medicine Foundation Second Trimester Screening Group. Progesterone and the risk of preterm birth among women with a short cervix. *N Engl J Med*. 2007 Aug 2;357(5):462-9. <http://dx.doi.org/10.1056/NEJMoa067815> PubMed PMID: 17671254.
15. Iams JD, Goldenberg RL, Meis PJ, Mercer BM, Moawad A, Das A, Thom E, McNellis D, Copper RL, Johnson F, Roberts JM. The length of the cervix and the risk of spontaneous premature delivery. National Institute of Child Health and Human Development Maternal Fetal Medicine Unit Network. *N Engl J Med*. 1996 Feb 29;334(9):567-72. <http://dx.doi.org/10.1056/NEJM199602293340904> PubMed PMID: 8569824.

16. Mercer BM, Goldenberg RL, Moawad AH, Meis PJ, Iams JD, Das AF, Caritis SN, Miodovnik M, Menard MK, Thurnau GR, Dombrowski MP, Roberts JM, McNellis D. The preterm prediction study: effect of gestational age and cause of preterm birth on subsequent obstetric outcome. National Institute of Child Health and Human Development Maternal-Fetal Medicine Units Network. *Am J Obstet Gynecol.* 1999 Nov;181(5 Pt 1):1216-21. [http://dx.doi.org/10.1016/S0002-9378\(99\)70111-0](http://dx.doi.org/10.1016/S0002-9378(99)70111-0) PubMed PMID: 10561648.
17. Spong CY. Prediction and prevention of recurrent spontaneous preterm birth. *Obstet Gynecol.* 2007 Aug;110(2 Pt 1):405-15. <http://dx.doi.org/10.1097/01.AOG.0000275287.08520.4a> PubMed PMID: 17666618.
18. Multiple pregnancy and birth: twins, triplets, and high-order multiples. American Society for Reproductive Medicine, 2012. Available at: [http://www.sart.org/uploadedFiles/ASRM\\_Content/Resources/Patient\\_Resources/Fact\\_Sheets\\_and\\_Info\\_Booklets/multiples.pdf](http://www.sart.org/uploadedFiles/ASRM_Content/Resources/Patient_Resources/Fact_Sheets_and_Info_Booklets/multiples.pdf).
19. Hogue CJ, Bremner JD. Stress model for research into preterm delivery among black women. *Am J Obstet Gynecol.* 2005 May;192(5 Suppl):S47-55. <http://dx.doi.org/10.1016/j.ajog.2005.01.073> PubMed PMID: 15891712.
20. Ratzon R, Sheiner E, Shoham-Vardi I. The role of prenatal care in recurrent preterm birth. *Eur J Obstet Gynecol Reprod Biol.* 2011 Jan;154(1):40-4. <http://dx.doi.org/10.1016/j.ejogrb.2010.08.011> Epub 2010 Sep 24. PubMed PMID: 20869804.
21. Welch MB, Hoversten K, Varner M. The Obstetric Family History. In: Studd J, Tan SL, Chervenak FA, editors. *Current Progress in Obstetrics and Gynecology*, volume 2. Mumbai:Kothari Medical, Ltd; 2014, p. 216-33.
22. Centers for Disease Control and Prevention (CDC). Perceived health needs and receipt of services during pregnancy - Oklahoma and South Carolina, 2004-2007. *MMWR Morb Mortal Wkly Rep.* 2010 Jun 18;59(23):710-4. PubMed PMID: 20559201.
23. Menon R, Torloni MR, Voltolini C, Torricelli M, Meriardi M, Betrán AP, Widmer M, Allen T, Davydova I, Khodjaeva Z, Thorsen P, Kacerovsky M, Tambor V, Massinen T, Nace J, Arora C. Biomarkers of spontaneous preterm birth: an overview of the literature in the last four decades. *Reprod Sci.* 2011 Nov;18(11):1046-70. <http://dx.doi.org/10.1177/1933719111415548> PubMed PMID: 22031189.
24. Iams JD. Clinical practice. Prevention of preterm parturition. *N Engl J Med.* 2014 Jan 16;370(3):254-61. <http://dx.doi.org/10.1056/NEJMcp1103640> PubMed PMID: 24428470.
25. Owen J, Hankins G, Iams JD, Berghella V, Sheffield JS, Perez-Delboy A, Egerman RS, Wing DA, Tomlinson M, Silver R, Ramin SM, Guzman ER, Gordon M, How HY, Knudtson EJ, Szychowski JM, Cliver S, Hauth JC. Multicenter randomized trial of cerclage for preterm birth prevention in high-risk women with shortened midtrimester cervical length. *Am J Obstet Gynecol.* 2009 Oct;201(4):375.e1-8. <http://dx.doi.org/10.1016/j.ajog.2009.08.015> PubMed PMID: 19788970.

26. Berghella V, Daly SF, Tolosa JE, DiVito MM, Chalmers R, Garg N, Bhullar A, Wapner RJ. Prediction of preterm delivery with transvaginal ultrasonography of the cervix in patients with high-risk pregnancies: does cerclage prevent prematurity? *Am J Obstet Gynecol.* 1999 Oct;181(4):809-15. [http://dx.doi.org/10.1016/S0002-9378\(99\)70306-6](http://dx.doi.org/10.1016/S0002-9378(99)70306-6) PubMed PMID: 10521734.
27. Berghella V, Rafael TJ, Szychowski JM, Rust OA, Owen J. Cerclage for short cervix on ultrasonography in women with singleton gestations and previous preterm birth: a meta-analysis. *Obstet Gynecol.* 2011 Mar;117(3):663-71. <http://dx.doi.org/10.1097/AOG.0b013e31820ca847> PubMed PMID: 21446209.
28. Conde-Agudelo A, Romero R, Nicolaides K, Chaiworapongsa T, O'Brien JM, Cetingoz E, da Fonseca E, Creasy G, Soma-Pillay P, Fusey S, Cam C, Alfirevic Z, Hassan SS. Vaginal progesterone vs. cervical cerclage for the prevention of preterm birth in women with a sonographic short cervix, previous preterm birth, and singleton gestation: a systematic review and indirect comparison metaanalysis. *Am J Obstet Gynecol.* 2013 Jan;208(1):42.e1-42.e18. <http://dx.doi.org/10.1016/j.ajog.2012.10.877> Epub 2012 Nov 15. PubMed PMID: 23157855.
29. Markham K, Iams JD. Universal or selective cervical length screening?: Examining the evidence. *Contemporary Ob/Gyn eNews.* 2013 Jun 01. <http://contemporaryobgyn.modernmedicine.com/contemporary-obgyn/content/tags/cervical-length-measurement/universal-or-selective-cervical-length-s?page=full>
30. Cahill AG, Odibo AO, Caughey AB, Stamilio DM, Hassan SS, Macones GA, Romero R. Universal cervical length screening and treatment with vaginal progesterone to prevent preterm birth: a decision and economic analysis. *Am J Obstet Gynecol.* 2010 Jun;202(6):548.e1-8. <http://dx.doi.org/10.1016/j.ajog.2009.12.005> Epub 2010 Jan 15. PubMed PMID: 20079888.
31. Parry S, Simhan H, Elovitz M, Iams J. Universal maternal cervical length screening during the second trimester: pros and cons of a strategy to identify women at risk of spontaneous preterm delivery. *Am J Obstet Gynecol.* 2012 Aug;207(2):101-6. <http://dx.doi.org/10.1016/j.ajog.2012.04.021> Epub 2012 Apr 28. PubMed PMID: 22633270.
32. Berghella V, Baxter JK, Hendrix NW. Cervical assessment by ultrasound for preventing preterm delivery. *Cochrane Database Syst Rev.* 2013 Jan 31;1:CD007235. <http://dx.doi.org/10.1002/14651858.CD07235.pub3> PubMed PMID: 23440813.
33. Clark EA, Esplin S, Torres L, Turok D, Yoder BA, Varner MW, Winter S. Prevention of recurrent preterm birth: role of the neonatal follow-up program. *Matern Child Health J.* 2014 May;18(4):858-63. <http://dx.doi.org/10.1007/s10995-013-1311-0> PubMed PMID: 23817726.
34. Chamberlain C, O'Mara-Eves A, Oliver S, Caird JR, Perlen SM, Eades SJ, Thomas J. Psychosocial interventions for supporting women to stop smoking in pregnancy. *Cochrane Database Syst Rev.* 2013 Oct 23;10:CD001055. <http://dx.doi.org/10.1002/14651858.CD01055.pub4> PubMed PMID: 24154953.

35. Screening, brief intervention, and referral to treatment (SBIRT) in behavioral healthcare. Substance Abuse and Mental Health Services Administration (SAMHSA). Available at: <http://www.samhsa.gov/prevention/sbirt/SBIRTwhitepaper.pdf>.
36. Meis PJ, Klebanoff M, Thom E, Dombrowski MP, Sibai B, Moawad AH, Spong CY, Hauth JC, Miodovnik M, Varner MW, Leveno KJ, Caritis SN, Iams JD, Wapner RJ, Conway D, O'Sullivan MJ, Carpenter M, Mercer B, Ramin SM, Thorp JM, Peaceman AM, Gabbe S; National Institute of Child Health and Human Development Maternal-Fetal Medicine Units Network. Prevention of recurrent preterm delivery by 17 alpha-hydroxyprogesterone caproate. *N Engl J Med.* 2003 Jun 12;348(24):2379-85. Erratum in: *N Engl J Med.* 2003 Sep 25;349(13):1299. <http://dx.doi.org/10.1056/NEJMoa035140> PubMed PMID: 12802023.
37. Spong CY, Meis PJ, Thom EA, Sibai B, Dombrowski MP, Moawad AH, Hauth JC, Iams JD, Varner MW, Caritis SN, O'Sullivan MJ, Miodovnik M, Leveno KJ, Conway D, Wapner RJ, Carpenter M, Mercer B, Ramin SM, Thorp JM, Peaceman AM, Gabbe S; National Institute of Child Health and Human Development Maternal Fetal Medicine Units Network. Progesterone for prevention of recurrent preterm birth: impact of gestational age at previous delivery. *Am J Obstet Gynecol.* 2005 Sep;193(3 Pt 2):1127-31. <http://dx.doi.org/10.1016/j.ajog.2005.05.077> PubMed PMID: 16157124.
38. Manuck TA, Lai Y, Meis PJ, Dombrowski MP, Sibai B, Spong CY, Rouse DJ, Durnwald CP, Caritis SN, Wapner RJ, Mercer BM, Ramin SM. Progesterone receptor polymorphisms and clinical response to 17-alpha-hydroxyprogesterone caproate. *Am J Obstet Gynecol.* 2011 Aug;205(2):135.e1-9. <http://dx.doi.org/10.1016/j.ajog.2011.03.048> Epub 2011 Apr 8. PubMed PMID: 21600550.
39. Dodd JM, Jones L, Flenady V, Cincotta R, Crowther CA. Prenatal administration of progesterone for preventing preterm birth in women considered to be at risk of preterm birth. *Cochrane Database Syst Rev.* 2013 Jul 31;7:CD004947. <http://dx.doi.org/10.1002/14651858.CD004947.pub3> PubMed PMID: 23903965.
40. Final report of the Medical Research Council/Royal College of Obstetricians and Gynaecologists multicentre randomised trial of cervical cerclage. MRC/RCOG Working Party on Cervical Cerclage. *Br J Obstet Gynaecol.* 1993 Jun;100(6):516-23. <http://dx.doi.org/10.1111/j.1471-0528.1993.tb15300.x> PubMed PMID: 8334085.
41. Berghella V, Odibo AO, To MS, Rust OA, Althuisius SM. Cerclage for short cervix on ultrasonography: meta-analysis of trials using individual patient-level data. *Obstet Gynecol.* 2005 Jul;106(1):181-9. <http://dx.doi.org/10.1097/01.AOG.0000168435.17200.53> PubMed PMID: 15994635.



42. Alfirevic Z, Owen J, Carreras Moratonas E, Sharp AN, Szychowski JM, Goya M. Vaginal progesterone, cerclage or cervical pessary for preventing preterm birth in asymptomatic singleton pregnant women with a history of preterm birth and a sonographic short cervix. *Ultrasound Obstet Gynecol.* 2013 Feb;41(2):146-51. <http://dx.doi.org/10.1002/uog.12300> Epub 2013 Jan 17. PubMed PMID: 22991337.
43. Huel G, Keller E, Gueguen S, Robert C, Bouyer J, Papiernik E, Mamelle N, Laumon B, Munoz F, Collin D, et al. Effective prevention of preterm birth: the French experience measured at Haguenau. *Birth Defects Orig Artic Ser.* 1989;25(1):1-234. PubMed PMID: 2495829.
44. Tafforeau J, Papiernik E, Richard A, Pons JC. Is prevention of preterm births in twin pregnancies possible? Analysis of the results of a prevention program in France (1989-1991). *Eur J Obstet Gynecol Reprod Biol.* 1995 Apr;59(2):169-74. [http://dx.doi.org/10.1016/0028-2243\(95\)02048-W](http://dx.doi.org/10.1016/0028-2243(95)02048-W) PubMed PMID: 7657011.
45. Buescher PA, Meis PJ, Ernest JM, Moore ML, Michielutte R, Sharp P. A comparison of women in and out of a prematurity prevention project in a North Carolina perinatal care region. *Am J Public Health.* 1988 Mar;78(3):264-7. <http://dx.doi.org/10.2105/AJPH.78.3.264> PubMed PMID: 3341494.
46. Dyson DC, Danbe KH, Bamber JA, Crites YM, Field DR, Maier JA, Newman LA, Ray DA, Walton DL, Armstrong MA. Monitoring women at risk for preterm labor. *N Engl J Med.* 1998 Jan 1;338(1):15-9. <http://dx.doi.org/10.1056/NEJM19980113380103> PubMed PMID: 9414326.
47. Dyson DC, Crites YM, Ray DA, Armstrong MA. Prevention of preterm birth in high-risk patients: the role of education and provider contact versus home uterine monitoring. *Am J Obstet Gynecol.* 1991 Mar;164(3):756-62. [http://dx.doi.org/10.1016/0002-9378\(91\)90510-X](http://dx.doi.org/10.1016/0002-9378(91)90510-X) PubMed PMID: 2003537.
48. Newman RB, Sullivan SA, Menard MK, Rittenberg CS, Rowland AK, Korte JE, Kirby H. South Carolina Partners for Preterm Birth Prevention: a regional perinatal initiative for the reduction of premature birth in a Medicaid population. *Am J Obstet Gynecol.* 2008 Oct;199(4):393.e1-8. <http://dx.doi.org/10.1016/j.ajog.2008.07.047> PubMed PMID: 18928985.
49. Rittenberg C, Sullivan S, Istwan N, Rhea D, Stanziano G, Newman R. Women receiving 17-alpha-hydroxyprogesterone caproate hospitalized for preterm labor at less than 34 weeks benefit from daily perinatal nursing surveillance. *Am J Obstet Gynecol.* 2008 Oct;199(4):389.e1-4. <http://dx.doi.org/10.1016/j.ajog.2008.06.070> PubMed PMID: 18928983.
50. Manuck TA, Henry E, Gibson J, Varner MW, Porter TF, Jackson GM, Esplin MS. Pregnancy outcomes in a recurrent preterm birth prevention clinic. *Am J Obstet Gynecol.* 2011 Apr;204(4):320.e1-6. <http://dx.doi.org/10.1016/j.ajog.2011.01.011> Epub 2011 Feb 23. PubMed PMID: 21345407.
51. Lucas B, Poole-Yaeger A, Istwan N, Stanziano G, Rhea D, Mason M. Pregnancy outcomes of managed Medicaid members prescribed home administration of 17  $\alpha$ -hydroxyprogesterone caproate. *Am J Perinatol.* 2012 Aug;29(7):489-96. <http://dx.doi.org/10.1055/s-0032-1304833> Epub 2012 Mar 7. PubMed PMID: 22399213.

52. Folger AT. Maternal Chlamydia trachomatis infections and preterm birth: the impact of early detection and eradication during pregnancy. *Matern Child Health J.* 2014 Oct;18(8):1795-802. <http://dx.doi.org/10.1007/s10995-013-1423-6> PubMed PMID: 24337865.
53. Roberts D, Dalziel S. Antenatal corticosteroids for accelerating fetal lung maturation for women at risk of preterm birth. *Cochrane Database Syst Rev.* 2006 Jul 19;(3):CD004454. <http://dx.doi.org/10.1002/14651858.cd004454.pub2> PubMed PMID: 16856047.
54. Costantine MM, Weiner SJ; Eunice Kennedy Shriver National Institute of Child Health and Human Development Maternal-Fetal Medicine Units Network. Effects of antenatal exposure to magnesium sulfate on neuroprotection and mortality in preterm infants: a meta-analysis. *Obstet Gynecol.* 2009 Aug;114(2 Pt 1):354-64. <http://dx.doi.org/10.1097/AOG.0b013e3181ae98c2> PubMed PMID: 19622997.
55. Manuck TA, Esplin MS, Biggio J, Bukowski R, Parry S, Zhang H, Huang H, Varner MW, Andrews W, Saade G, Sadovsky Y, Reddy UM, Ilekis J; Eunice Kennedy Shriver National Institute of Child Health and Human Development (NICHD) Genomics and Proteomics Network for Preterm Birth Research (GPN-PBR). Predictors of response to 17-alpha hydroxyprogesterone caproate for prevention of recurrent spontaneous preterm birth. *Am J Obstet Gynecol.* 2016 Mar;214(3):376.e1-8. <http://dx.doi.org/10.1016/j.ajog.2015.12.010> Epub 2015 Dec 12. PubMed PMID: 26692181.
56. Rouse DJ, Hirtz DG, Thom E, Varner MW, Spong CY, Mercer BM, Iams JD, Wapner RJ, Sorokin Y, Alexander JM, Harper M, Thorp JM Jr, Ramin SM, Malone FD, Carpenter M, Miodovnik M, Moawad A, O'Sullivan MJ, Peaceman AM, Hankins GD, Langer O, Caritis SN, Roberts JM; Eunice Kennedy Shriver NICHD Maternal-Fetal Medicine Units Network. A randomized, controlled trial of magnesium sulfate for the prevention of cerebral palsy. *N Engl J Med.* 2008 Aug 28;359(9):895-905. <http://dx.doi.org/10.1056/NEJMoa0801187> PubMed PMID: 18753646
57. American College of Obstetricians and Gynecologists; Committee on Practice Bulletins—Obstetrics. ACOG practice bulletin no. 127: Management of preterm labor. *Obstet Gynecol.* 2012 Jun;119(6):1308-17. <http://dx.doi.org/10.1097/AOG.0b013e31825af2f0> PubMed PMID: 22617615.
58. Esplin MS, Merrell K, Goldenberg R, Lai Y, Iams JD, Mercer B, Spong CY, Miodovnik M, Simhan HN, van Dorsten P, Dombrowski M; Eunice Kennedy Shriver National Institute of Child Health and Human Development Maternal-Fetal Medicine Units Network. Proteomic identification of serum peptides predicting subsequent spontaneous preterm birth. *Am J Obstet Gynecol.* 2011 May;204(5):391.e1-8. <http://dx.doi.org/10.1016/j.ajog.2010.09.021> Epub 2010 Nov 11. PubMed PMID: 21074133.
59. Schaaf JM, Ravelli AC, Mol BW, Abu-Hanna A. Development of a prognostic model for predicting spontaneous singleton preterm birth. *Eur J Obstet Gynecol Reprod Biol.* 2012 Oct;164(2):150-5. <http://dx.doi.org/10.1016/j.ejogrb.2012.07.007> Epub 2012 Jul 21. PubMed PMID: 22824569.



60. Romero R, Friel LA, Velez Edwards DR, Kusanovic JP, Hassan SS, Mazaki-Tovi S, Vaisbuch E, Kim CJ, Erez O, Chaiworapongsa T, Pearce BD, Bartlett J, Salisbury BA, Anant MK, Vovis GF, Lee MS, Gomez R, Behnke E, Oyarzun E, Tromp G, Williams SM, Menon R. A genetic association study of maternal and fetal candidate genes that predispose to preterm prelabor rupture of membranes (PROM). *Am J Obstet Gynecol.* 2010 Oct;203(4):361.e1-361.e30. <http://dx.doi.org/10.1016/j.ajog.2010.05.026> Epub 2010 Jul 31. PubMed PMID: 20673868.
61. Romero R, Mazaki-Tovi S, Vaisbuch E, Kusanovic JP, Chaiworapongsa T, Gomez R, Nien JK, Yoon BH, Mazor M, Luo J, Banks D, Ryals J, Beecher C. Metabolomics in premature labor: a novel approach to identify patients at risk for preterm delivery. *J Matern Fetal Neonatal Med.* 2010 Dec;23(12):1344-59. <http://dx.doi.org/10.3109/14767058.2010.482618> Epub 2010 May 26. PubMed PMID: 20504069.
62. Romero R, Velez Edwards DR, Kusanovic JP, Hassan SS, Mazaki-Tovi S, Vaisbuch E, Kim CJ, Chaiworapongsa T, Pearce BD, Friel LA, Bartlett J, Anant MK, Salisbury BA, Vovis GF, Lee MS, Gomez R, Behnke E, Oyarzun E, Tromp G, Williams SM, Menon R. Identification of fetal and maternal single nucleotide polymorphisms in candidate genes that predispose to spontaneous preterm labor with intact membranes. *Am J Obstet Gynecol.* 2010 May;202(5):431.e1-34. <http://dx.doi.org/10.1016/j.ajog.2010.03.026> PubMed PMID: 20452482.
63. van Vliet EO, Schuit E, Heida KY, Opmeer BC, Kok M, Gyselaers W, Porath MM, Woiski M, Bax CJ, Bloemenkamp KW, Scheepers HC, Jaquemyn Y, van Beek E, Duvékot HJ, Franssen MT, Bijvank BN, Kok JH, Franx A, Mol BW, Oudijk MA. Nifedipine versus atosiban in the treatment of threatened preterm labour (Assessment of Perinatal Outcome after Specific Tocolysis in Early Labour: APOSTEL III-Trial). *BMC Pregnancy Childbirth.* 2014 Mar 3;14:93. <http://dx.doi.org/10.1186/1471-2393-14-93> PubMed PMID: 24589124.
64. Preterm birth. Health Resources and Services Administration, 2013. Available at: <http://mchb.hrsa.gov/chusa13/perinatal-health-status-indicators/pdf/pb.pdf>.
65. Bréart G, Blondel B, Tuppin P, Grandjean H, Kaminski M. Did preterm deliveries continue to decrease in France in the 1980s? *Paediatr Perinat Epidemiol.* 1995 Jul;9(3):296-306. <http://dx.doi.org/10.1111/j.1365-3016.1995.tb00146.x> PubMed PMID: 7479278.
66. Papiernik E, Goffinet F. Prevention of preterm births, the French experience. *Clin Obstet Gynecol.* 2004 Dec;47(4):755-67; discussion 881-2. <http://dx.doi.org/10.1097/01.grf.0000141409.92711.11> PubMed PMID: 15596930.