

University of Massachusetts Medical School  
**eScholarship@UMMS**

---

[Open Access Articles](#)

[Open Access Publications by UMMS Authors](#)

---

2017-03-01


## A common class of transcripts with 5'-intron depletion, distinct early coding sequence features, and N1-methyladenosine modification

Can Cenik  
*University of Massachusetts Medical School*

*Et al.*

### Let us know how access to this document benefits you.

Follow this and additional works at: <https://escholarship.umassmed.edu/oapubs>

 Part of the [Biochemistry, Biophysics, and Structural Biology Commons](#), [Bioinformatics Commons](#), and the [Genetics and Genomics Commons](#)

---

### Repository Citation

Cenik C, Chua HN, Singh G, Akef A, Snyder MP, Palazzo AF, Moore MJ, Roth FP. (2017). A common class of transcripts with 5'-intron depletion, distinct early coding sequence features, and N1-methyladenosine modification. Open Access Articles. <https://doi.org/10.1261/rna.059105.116>. Retrieved from <https://escholarship.umassmed.edu/oapubs/3009>

Creative Commons License



This work is licensed under a [Creative Commons Attribution 4.0 License](#).

This material is brought to you by eScholarship@UMMS. It has been accepted for inclusion in Open Access Articles by an authorized administrator of eScholarship@UMMS. For more information, please contact [Lisa.Palmer@umassmed.edu](mailto:Lisa.Palmer@umassmed.edu).

# A common class of transcripts with 5'-intron depletion, distinct early coding sequence features, and *N*<sup>1</sup>-methyladenosine modification

CAN CENIK,<sup>1,2</sup> HON NIAN CHUA,<sup>3,4,5</sup> GURAMRIT SINGH,<sup>2,6,7,8</sup> ABDALLA AKEF,<sup>9</sup> MICHAEL P. SNYDER,<sup>1</sup> ALEXANDER F. PALAZZO,<sup>9</sup> MELISSA J. MOORE,<sup>2,7,8</sup> and FREDERICK P. ROTH<sup>3,4,10,11</sup>

<sup>1</sup>Department of Genetics, Stanford University School of Medicine, Stanford, California 94305, USA

<sup>2</sup>Department of Biochemistry and Molecular Pharmacology, University of Massachusetts Medical School, Worcester, Massachusetts 01605, USA

<sup>3</sup>Donnelly Centre, Department of Molecular Genetics, and Department of Computer Science, University of Toronto, Toronto M5S 3E1, Ontario, Canada

<sup>4</sup>Lunenfeld-Tanenbaum Research Institute, Mt. Sinai Hospital, Toronto M5G 1X5, Ontario, Canada

<sup>5</sup>DataRobot, Inc., Boston, Massachusetts 02109, USA

<sup>6</sup>Department of Molecular Genetics, Center for RNA Biology, The Ohio State University, Columbus, Ohio 43210, USA

<sup>7</sup>Howard Hughes Medical Institute, University of Massachusetts Medical School, Worcester, Massachusetts 01605, USA

<sup>8</sup>RNA Therapeutics Institute, University of Massachusetts Medical School, Worcester, Massachusetts 01605, USA

<sup>9</sup>Department of Biochemistry, University of Toronto, Toronto, Ontario M5S 1A8, Canada

<sup>10</sup>Center for Cancer Systems Biology (CCSB), Dana-Farber Cancer Institute, Boston 02215, Massachusetts, USA

<sup>11</sup>The Canadian Institute for Advanced Research, Toronto M5G 1Z8, Ontario, Canada

## ABSTRACT

Introns are found in 5' untranslated regions (5'UTRs) for 35% of all human transcripts. These 5'UTR introns are not randomly distributed: Genes that encode secreted, membrane-bound and mitochondrial proteins are less likely to have them. Curiously, transcripts lacking 5'UTR introns tend to harbor specific RNA sequence elements in their early coding regions. To model and understand the connection between coding-region sequence and 5'UTR intron status, we developed a classifier that can predict 5'UTR intron status with >80% accuracy using only sequence features in the early coding region. Thus, the classifier identifies transcripts with 5' proximal-intron-minus-like-coding regions ("5IM" transcripts). Unexpectedly, we found that the early coding sequence features defining 5IM transcripts are widespread, appearing in 21% of all human RefSeq transcripts. The 5IM class of transcripts is enriched for non-AUG start codons, more extensive secondary structure both preceding the start codon and near the 5' cap, greater dependence on eIF4E for translation, and association with ER-proximal ribosomes. 5IM transcripts are bound by the exon junction complex (EJC) at noncanonical 5' proximal positions. Finally, *N*<sup>1</sup>-methyladenosines are specifically enriched in the early coding regions of 5IM transcripts. Taken together, our analyses point to the existence of a distinct 5IM class comprising ~20% of human transcripts. This class is defined by depletion of 5' proximal introns, presence of specific RNA sequence features associated with low translation efficiency, *N*<sup>1</sup>-methyladenosines in the early coding region, and enrichment for noncanonical binding by the EJC.

**Keywords:** 5'-UTR introns; random forest; *N*<sup>1</sup>-methyladenosine; exon junction complex

## INTRODUCTION

Approximately 35% of all human transcripts harbor introns in their 5' untranslated regions (5'UTRs) (Hong et al. 2006; Cenik et al. 2010). Among genes with 5'UTR introns (5UIs), those annotated as "regulatory" are significantly over-represented, while there is an underrepresentation of genes encoding proteins that are targeted to either the endoplasmic reticulum (ER) or mitochondria (Cenik et al. 2011). For tran-

scripts that encode ER- and mitochondria-targeted proteins, 5UI depletion is associated with the presence of specific RNA sequence properties (Palazzo et al. 2007, 2013; Cenik et al. 2011). Specifically, nuclear export of an otherwise inefficiently exported microinjected mRNA or cDNA transcript can be promoted by an ER-targeting signal sequence-containing region (SSCRs) or mitochondrial signal sequence coding region (MSCRs) from a gene lacking 5'UTR introns (Cenik et al. 2011; Lee et al. 2015). However, more recent studies suggest that many SSCRs have little impact on nuclear export

Corresponding authors: [Melissa.Moore@umassmed.edu](mailto:Melissa.Moore@umassmed.edu), [Fritz.Roth@utoronto.ca](mailto:Fritz.Roth@utoronto.ca)

Article is online at <http://www.rnajournal.org/cgi/doi/10.1261/rna.059105.116>. Freely available online through the RNA Open Access option.

© 2017 Cenik et al. This article, published in *RNA*, is available under a Creative Commons License (Attribution 4.0 International), as described at <http://creativecommons.org/licenses/by/4.0/>.

for RNAs transcribed in vivo (Lee et al. 2015), but rather enhance translation in a RanBP2-dependent manner (Mahadevan et al. 2013).

Among SSCR- and MSCR-containing transcripts (referred to hereafter as SSCR and MSCR transcripts), ~75% lack 5'UTR introns ("5UI<sup>-</sup>" transcripts) and ~25% have them ("5UI<sup>+</sup>" transcripts). These two groups have markedly different sequence compositions at the 5' ends of their coding sequences. 5UI<sup>-</sup> transcripts tend to have lower adenine content (Palazzo et al. 2007) and use codons with fewer uracils and adenines than 5UI<sup>+</sup> transcripts (Cenik et al. 2011). Their signal sequences also contain leucine and arginine more often than the biochemically similar amino acids isoleucine and lysine, respectively. Leucine and arginine codons contain fewer adenine and thymine nucleotides, consistent with adenine and thymine depletion. This depletion is also associated with the presence of a specific GC-rich RNA motif in the early coding region of 5UI<sup>-</sup> transcripts (Cenik et al. 2011).

Despite some knowledge as to their early coding region features, key questions about this class of 5UI<sup>-</sup> transcripts have remained unanswered: Do the above sequence features extend beyond SSCR- and MSCR-containing transcripts to other 5UI<sup>-</sup> genes? Do 5UI<sup>-</sup> transcripts having these features share common functional or regulatory features? What binding factor(s) recognize these RNA elements? A more complete model of the relationship of early coding features and 5UI<sup>-</sup> status would begin to address these questions.

Here, to better understand the relationship between early coding region features and 5UI status, we undertook an integrative machine learning approach. We reasoned that a machine learning classifier which could identify 5UI<sup>-</sup> transcripts solely from early coding sequence would potentially provide two types of insight. First, it could systematically identify predictive features. Second, the subset of 5UI<sup>-</sup> transcripts that could be identified by the classifier might then represent a functionally distinct transcript class. Having developed such a classifier, we found that it identified ~21% of all human transcripts as harboring coding regions characteristic of 5UI<sup>-</sup> transcripts. While many of these transcripts encode ER- and mitochondrial-targeted proteins, many others encode nuclear and cytoplasmic proteins. This class of transcripts shares characteristic tendencies to lack 5' proximal introns, to contain noncanonical exon junction complex (EJC) binding sites, to have multiple features associated with lower intrinsic translation efficiency, and to have an increased incidence of *N*<sup>1</sup>-methyladenosine modification.

## RESULTS

### A classifier that predicts 5UI status using only early coding sequence information

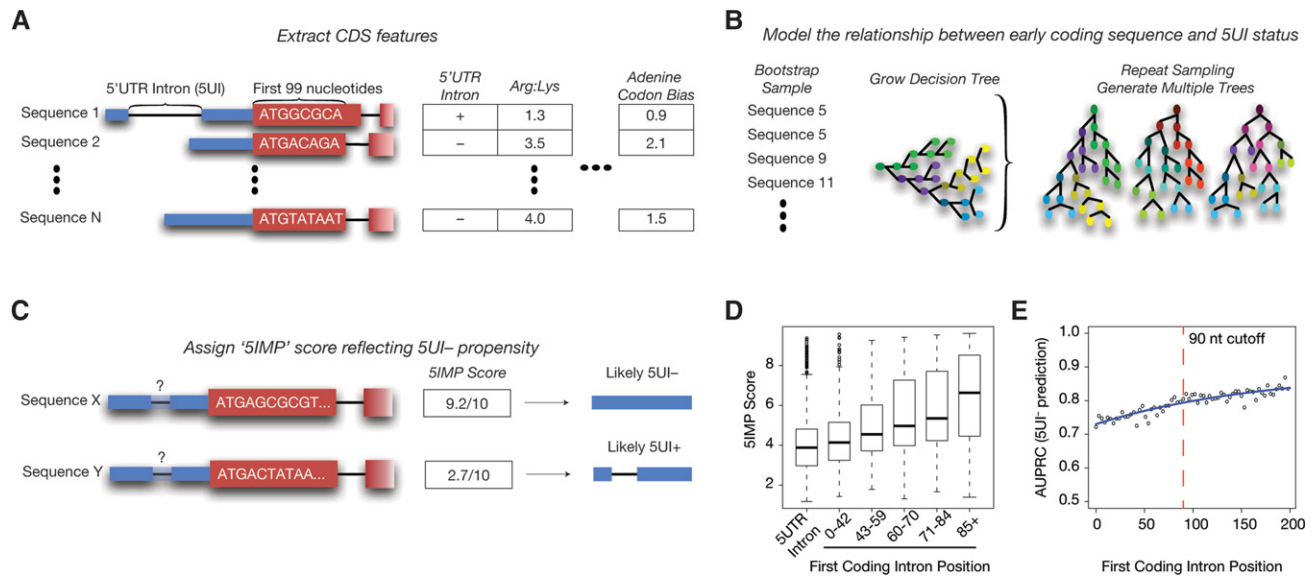
To better understand the previously reported enigmatic relationship between certain early coding region sequences and

the absence of a 5UI, we sought to model this relationship. Specifically, we used a random forest classifier (Breiman 2001) to learn the relationship between 5UI absence and a collection of 36 different sequence features extracted from the first 99 nt of all human coding regions (CDS) (Fig. 1A–C; Supplemental Table S1; Materials and Methods). We then used all transcripts known to contain an SSCR (a total of 3743 transcripts clusters; Materials and Methods), regardless of 5UI status, as our training set. This training constraint ensured that all input nucleotide sequences were subject to similar functional constraints at the protein level. Thus, we sought to identify sequence features that differ between 5UI<sup>-</sup> and 5UI<sup>+</sup> transcripts at the RNA level.

Our classifier assigns to each transcript a "5'UTR-intron-minus-predictor" (5IMP) score between 0 and 10, where higher scores correspond to a higher likelihood of being 5UI<sup>-</sup> (Fig. 1C). Interestingly, preliminary ranking of the 5UI<sup>-</sup> transcripts by 5IMP score revealed a relationship between the position of the first intron in the coding region and the 5IMP score. 5UI<sup>-</sup> transcripts for which the first intron was more than 85 nt downstream from the start codon had the highest 5IMP scores. Furthermore, the closer the first intron was to the start codon, the lower the 5IMP score (Fig. 1D). We explored this relationship further by training classifiers that increasingly excluded from the training set 5UI<sup>-</sup> transcripts according to the distance of the first intron from the 5' end of the coding region. This revealed that classifier performance, as measured by the area under the precision recall curve (AUPRC), increased as a function of the distance from start codon to first intron distance (Materials and Methods, Fig. 1E). Thus, the RNA sequence features we identified as being predictive of 5UI<sup>-</sup> transcripts are more accurately described as being predictors of transcripts without 5'-proximal introns.

To minimize the impact of transcripts that may "behave" as though they were 5UI<sup>+</sup> due to an intron early in the coding region, we eliminated 5UI<sup>-</sup> SSCR transcripts with a first intron <90 nt downstream from the start codon (Materials and Methods) and generated a new classifier. Discriminative motif features were learned independently (Materials and Methods), and performance of this new classifier was gauged using 10-fold cross validation. We assessed cross-validation performance in two ways: (i) in terms of the area under the receiver operating curve (AUC)—which can be thought of as a measure of average recall across a range of false positive rates; (ii) in terms of area under the precision versus recall curve (AUPRC), which can be thought of as the average precision (fraction of predictions which are correct) across a range of recall values. Specifically, the classifier showed an AUC of 74% and AUPRC of 88% (Fig. 2A, yellow curves; exceeding AUC 50% and AUPRC 71%, the performance values expected of a naïve predictor). We used this optimized classifier for all subsequent analyses.

SSCR transcripts exhibited markedly different 5IMP score distributions for the 5UI<sup>+</sup> and 5UI<sup>-</sup> subsets (Fig. 2B). The



**FIGURE 1.** Modeling the relationship between sequence features in the early coding region and the absence of 5'UTR introns (5UIs). (A) For all human transcripts, information about 36 sequence features of the early coding region (first 99 nt) and 5UI presence was extracted. (B) Transcripts containing a signal sequence coding region (SSCR) were used to train a random forest classifier that modeled the relationship between 5UI absence and 36 sequence features. (C) With this classifier, all human transcripts were assigned a score that quantifies the likelihood of 5UI absence based on specific RNA sequence features in the early coding region. Transcripts with high scores are thus considered to have 5'-proximal intron minus-like coding regions (5IMs). (D) "5'UTR-intron-minus-predictor" (5IMP) score distributions for SSCR-containing transcripts shift to higher scores with later-appearing first introns, suggesting that 5IM coding region features not only predict lack of a 5UI, but also lack of early coding region introns. (E) Classifier performance was optimized by excluding 5UI<sup>-</sup> transcripts with introns appearing early in the coding region. Cross-validation performance (area under the precision recall curve, AUPRC) was examined for a series of alternative 5IMP classifiers using different first-intron-position criterion for excluding 5UI<sup>-</sup> transcripts from the training set (Materials and Methods).

5UI<sup>+</sup> score distribution was unimodal with a peak at ~2.4. In contrast, the 5UI<sup>-</sup> score distribution was bimodal with one peak at ~3.6 and another at ~9, suggesting the existence of at least two underlying 5UI<sup>-</sup> transcript classes. The peak at score 3.6 resembled the 5UI<sup>+</sup> peak. Also contributing to the peak at 3.6 is the set of 5UI<sup>-</sup> transcripts harboring an intron in the first 90 nt of the CDS (55% of all 5UI<sup>-</sup> transcripts). The other distinct high-scoring 5UI<sup>-</sup> class (peak at score 9) is composed of transcripts that have specific 5UI<sup>-</sup>-predictive RNA sequence elements within the early coding region.

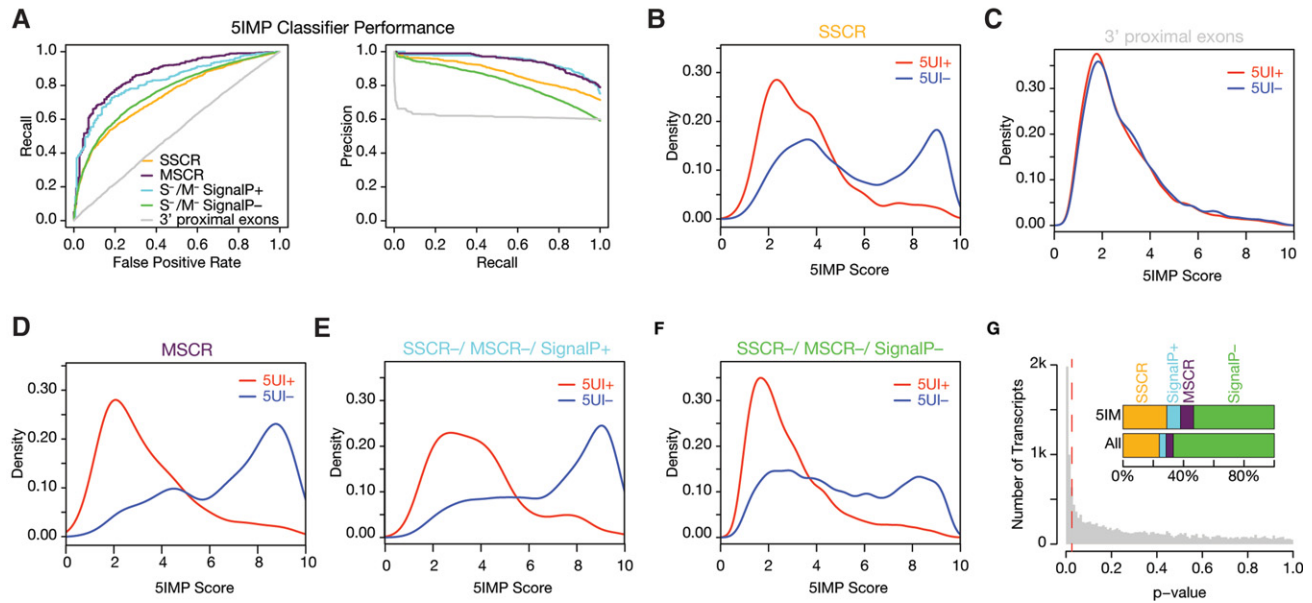
We next wished to evaluate whether our classifier was discriminating 5UI<sup>+</sup> and 5UI<sup>-</sup> SSCR transcripts using signals that appear specifically in the early coding region as opposed to signals that appear broadly across the coding region. To do so, for every transcript we randomly chose 99 nt from the region downstream from the third exon. The 5IMP score distributions of these "3' proximal exon" sets were identical for 5UI<sup>+</sup> and 5UI<sup>-</sup> transcripts (Fig. 2A,C), confirming that the sequence features that distinguish 5UI<sup>+</sup> and 5UI<sup>-</sup> transcripts are specific to the early coding region.

### RNA elements associated with 5UI<sup>-</sup> transcripts are pervasive in the human genome

Having trained the classifier on SSCR transcripts, we wondered how well it would predict the 5UI status of other tran-

scripts. Despite having been trained exclusively on SSCR transcripts, the classifier performed remarkably well on MSCR transcripts, achieving an AUC of 86% and AUPRC of 95% (Fig. 2A, purple line; Fig. 2D; when compared with 50% and 77%, respectively, expected by chance). This result suggests that RNA elements within early coding regions of 5UI<sup>-</sup> MSCR-transcripts are similar to those in 5UI<sup>-</sup> SSCR-transcripts despite distinct functional constraints at the protein level.

We next wondered whether the class of 5UI<sup>-</sup> transcripts that can be predicted on the basis of early coding region features is restricted to transcripts encoding proteins trafficked to the ER or mitochondria, or is instead a more general class of transcripts. We therefore asked whether the classifier could predict 5UI<sup>-</sup> status in transcripts that contain neither an SSCR nor an MSCR ("S<sup>-</sup>/M<sup>-</sup>" transcripts). Because unannotated SSCRs could confound this analysis, we first used SignalP 3.0 to identify S<sup>-</sup>/M<sup>-</sup> transcripts most likely to contain an unannotated SSCR (Bendtsen et al. 2004). These "SignalP<sup>+</sup>" transcripts had a 5IMP score distribution comparable to those of known SSCR and MSCR transcripts (Fig. 2E), and the classifier worked well to identify the 5UI<sup>-</sup> subset of these transcripts (AUC 82% and AUPRC 95%, Fig. 2A, light blue line). While 5UI<sup>+</sup> SignalP<sup>+</sup> transcripts had predominantly low 5IMP scores, 5UI<sup>-</sup> SignalP<sup>+</sup> 5IMP scores were strongly skewed toward high 5IMP scores (peak at ~9;



**FIGURE 2.** Predicting 5UI status accurately using only early coding sequences. (A) As judged by area under the receiver operating characteristic curve (AUROC) and AUPRC, the 5IM classifier performed well for several different transcript classes. (B) The distribution of 5IMP scores reveals clear separation of 5UI<sup>+</sup> and 5UI<sup>-</sup> transcripts for SSCR-containing transcripts, where each SSCR-containing transcript was scored using a classifier that did not use that transcript in training (Materials and Methods). (C) Coding sequence features that are predictive of 5' proximal intron presence are restricted to the early coding region. This was supported by identical 5IM classifier score distributions with respect to 5UI presence for negative control sequences, each derived from a single randomly chosen “window” downstream from the third exon from one of the evaluated transcripts. (D) MSCR transcripts exhibited a major difference in 5IMP scores based on their 5UI status even though no MSCR transcripts were used in training the classifier. (E) Transcripts predicted to contain signal peptides (SignalP<sup>+</sup>) had a 5IMP score distribution similar to that of SSCR-containing transcripts. (F) After eliminating SSCR, MSCR, and SignalP<sup>+</sup> transcripts, the remaining S<sup>-</sup>/M<sup>-</sup>/SignalP<sup>-</sup> transcripts were still significantly enriched for high 5IMP classifier scores among 5UI<sup>-</sup> transcripts. (G) The control set of randomly chosen sequences downstream from the third exon from each transcript was used to calculate an empirical cumulative null distribution of 5IMP scores. Using this function, we determined the *P*-value corresponding to the 5IMP score for all transcripts. The red dashed line indicates the *P*-value corresponding to 5% false discovery rate. The *inset* depicts the distribution of various classes of mRNAs among the input set and 5IM transcripts.

Fig. 2E). These results were consistent with the idea that SignalP<sup>+</sup> transcripts do contain many unannotated SSCRs.

Having considered SignalP<sup>+</sup> transcripts as well as SSCR- and MSCR-containing transcripts, we used the classifier to calculate 5IMP scores for all remaining “S<sup>-</sup>/M<sup>-</sup>/SignalP<sup>-</sup>” transcripts. Although the performance was weaker on this gene set, it was still better than expected of a naïve predictor (Fig. 2A, green line). 5UI<sup>+</sup> S<sup>-</sup>/M<sup>-</sup>/SignalP<sup>-</sup> transcripts were strongly skewed toward low 5IMP scores (Fig. 2F). Surprisingly, however, a significant fraction of 5UI<sup>-</sup> S<sup>-</sup>/M<sup>-</sup>/SignalP<sup>-</sup> transcripts had high 5IMP scores (~18%). Thus, our results suggest a broad class of transcripts with early coding regions carrying sequence signals that predict the absence of a 5' proximal intron, or in other words, a class of transcripts with 5' proximal-intron-minus-like coding regions. Hereafter we refer to transcripts in this class as “5IM” transcripts.

We sought to identify what fraction of transcripts have 5IMP scores that exceed what would be expected in the absence of 5UI<sup>-</sup>-predictive early coding region signals. To establish this expectation, we used the above-described negative control set of equal-length coding sequences from outside of the early coding region. By quantifying the excess of high-scoring sequences in the real distribution relative to

this control distribution, we estimate that 21% of all human transcripts are 5IM transcripts (a 5IMP score of 7.41 corresponds to a 5% false discovery rate; Fig. 2G). The set of 5IM transcripts defined by our classifier (Supplemental Table S2) includes many that do not encode ER-targeted or mitochondrial proteins. The distribution of various classes of mRNAs among the 5IM transcripts was: 38% ER-targeted (SSCR or SignalP<sup>+</sup>), 9% mitochondrial (MSCR), and 53% other classes (S<sup>-</sup>/M<sup>-</sup>/SignalP<sup>-</sup>) (Fig. 2G). These results suggest that RNA-level features prevalent in the early coding regions of 5UI<sup>-</sup> SSCR and MSCR transcripts are also found in other transcript types (Fig. 2F,G), and that 5IM transcripts represent a broad class.

### Functional characterization of 5IM transcripts

5IM transcripts are defined by mRNA sequence features. Hence, we hypothesized that 5IM transcripts may be functionally related through shared regulatory mechanisms mediated by the presence of these common features. To this end, we collected large-scale data sets representing diverse attributes covering six broad categories (see Supplemental Table S3 for a complete list): (i) Curated functional

annotations, e.g., Gene Ontology terms, annotation as a “housekeeping” gene, genes subject to RNA editing; (ii) RNA localization, e.g., to dendrites, to mitochondria; (iii) protein and mRNA half-life, features that decrease mRNA stability, e.g., AU-rich elements; (iv) sequence features associated with regulated translation, e.g., codon optimality, secondary structure near the start codon; (v) known interactions with RNA-binding proteins or complexes such as Staufen-1, TDP-43, or the exon junction complex (EJC); (vi) RNA modifications, i.e.,  $N^1$ -methyladenosine ( $m^1A$ ).

We adjusted for multiple hypotheses testing at two levels. First, we took a conservative approach (Bonferroni correction) to correct for the number of tested functional characteristics. Second, some of the functional categories were analyzed in more depth and multiple sub-hypotheses were tested within the given category. In this in-depth analysis a false discovery-based correction was adopted. Below, all reported  $P$ -values remain significant ( $P$ -adjusted  $<0.05$ ) after multiple hypothesis test correction.

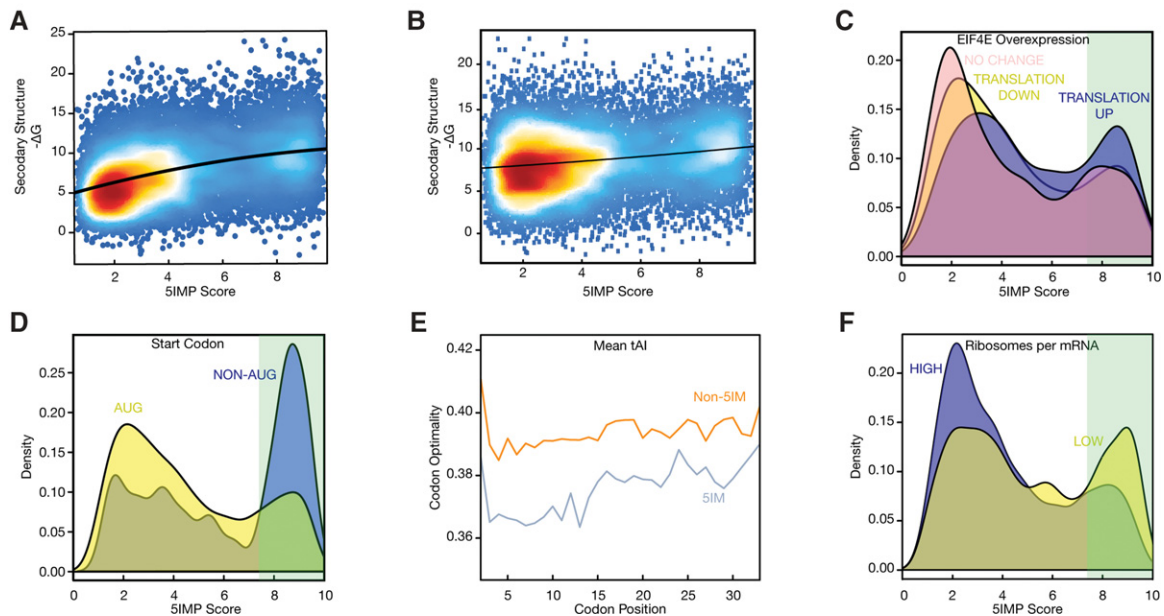
No associations between 5IM transcripts and features in categories (i), (ii), and (iii) were found, other than the already-known enrichments for ER- and mitochondrial-

targeted mRNAs. However, analyses for the remaining categories yielded the significant results described below.

### 5IM transcripts have features suggesting lower translation efficiency

Translation regulation is a major determinant of protein levels (Vogel and Marcotte 2012). To investigate potential connections between 5IM transcripts and translational regulation, we examined features associated with translation. Features found to be significant were:

- I. “Secondary structures near the start codon” can affect initiation rate by modulating start codon recognition (Parsyan et al. 2011). We observed a positive correlation between 5IMP score and the free energy of folding ( $-\Delta G$ ) of the 35 nt immediately preceding the start codon (Fig. 3A; Spearman  $\rho = 0.39$ ;  $P < 2.2 \times 10^{-16}$ ). This suggests that 5IM transcripts have a greater tendency for secondary structure near the start codon, presumably making the start codon less accessible.
- II. Similarly, “secondary structures near the 5′ cap” can modulate translation by hindering binding by the 43S-



**FIGURE 3.** 5IM transcripts have sequence features associated with lower translation efficiency. (A) The 5IM classifier score was positively correlated with the propensity for mRNA structure preceding the start codon ( $-\Delta G$ ) (Spearman  $\rho = 0.39$ ;  $P < 2.2 \times 10^{-16}$ ). For each transcript, 35 nt immediately upstream of the AUG were used to calculate  $-\Delta G$  (Materials and Methods). (B) The 5IM classifier score was positively correlated with the propensity for mRNA structure near the 5′ cap ( $-\Delta G$ ) (Spearman  $\rho = 0.18$ ;  $P = 7.9 \times 10^{-130}$ ; Materials and Methods). (C) Transcripts that are translationally up-regulated in response to eIF4E overexpression (Larsson et al. 2007) (blue) were enriched for higher 5IMP scores. Light green shading indicates 5IMP scores corresponding to 5% FDR. (D) Transcripts with non-AUG start codons (blue) exhibited significantly higher 5IMP scores than transcripts with a canonical ATG start codon (yellow). (E) Higher 5IMP scores were associated with less optimal codons (as measured by the tRNA adaptation index, tAI) for the first 33 codons. For all transcripts within each 5IMP score category (blue, high; orange, low), the mean tAI was calculated at each codon position. Start codon was not shown. (F) Transcripts with lower translation efficiency were enriched for higher 5IMP scores. Transcripts with translation efficiency one standard deviation below the mean (“LOW” translation, yellow) and one standard deviation higher than the mean (“HIGH” translation, blue) were identified using ribosome profiling and RNA-seq data from human lymphoblastoid cell lines (Materials and Methods).

preinitiation complex to the mRNA (Babendure et al. 2006). We observed a positive correlation between 5IMP score and the free energy of folding ( $-\Delta G$ ) of the 5' most 35 nt (Fig. 3B; Spearman  $\rho = 0.18$ ;  $P = 7.9 \times 10^{-130}$ ). This suggests that 5IM transcripts have a greater tendency for secondary structure near the 5' cap, presumably hindering binding by the 43S-preinitiation complex.

- III. "Increased translation upon eIF4E overexpression." The heterotrimeric translation initiation complex eIF4F (made up of eIF4A, eIF4E, and eIF4G) is responsible for facilitating the translation of transcripts with strong 5'UTR secondary structures (Parsyan et al. 2011). The eIF4E subunit binds to the 7mGpppG "methyl-G" cap, and the ATP-dependent helicase eIF4A (scaffolded by eIF4G) destabilizes 5'UTR secondary structure (Marintchev et al. 2009). A previous study identified transcripts that were more actively translated under conditions that promote cap-dependent translation (overexpression of eIF4E) (Larsson et al. 2007). In agreement with the observation that 5IM transcripts have more secondary structure upstream of the start codon and near the 5' cap, transcripts with high 5IMP scores were more likely to be translationally, but not transcriptionally, up-regulated upon eIF4E overexpression (Fig. 3C; Wilcoxon rank sum test  $P = 2.05 \times 10^{-22}$ , and  $P = 0.28$ , respectively).
- IV. "Non-AUG start codons." Transcripts with non-AUG start codons also have intrinsically low translation initiation efficiencies (Hinnebusch and Lorsch 2012). These mRNAs were greatly enriched among transcripts with high 5IMP scores (Fisher's exact test  $P = 0.0003$ ; odds ratio = 3.9) and have a median 5IMP score that is 3.57 higher than those with an AUG start (Fig. 3D).
- V. "Codon optimality." The efficiency of translation elongation is affected by codon optimality (Hershberg and Petrov 2008). Although some aspects of this remain controversial (Charneski and Hurst 2013; Shah et al. 2013; Zinshteyn and Gilbert 2013; Gerashchenko and Gladyshev 2015), it is clear that decoding of codons by tRNAs with different abundances can affect the translation rate under conditions of cellular stress (for review, see Gingold and Pilpel 2011). We therefore examined the tRNA adaptation index (tAI), which correlates with copy numbers of tRNA genes matching a given codon (dos Reis et al. 2004). Specifically, we calculated the median tAI of the first 99 coding nucleotides of each transcript, and found that 5IMP score was negatively correlated with tAI (Supplemental Fig. S1A; Spearman correlation  $\rho = -0.23$ ;  $P < 2 \times 10^{-16}$  median tAI and 5IMP score). This effect was restricted to the early coding regions as the negative control set of randomly chosen sequences downstream from the third exon from each transcript did not exhibit a relationship between 5IMP score and codon optimality (Supplemental Fig. S1B,C). Thus, 5IM transcripts show reduced codon optimality in early

coding regions, suggesting that 5IM transcripts have decreased translation elongation efficiency.

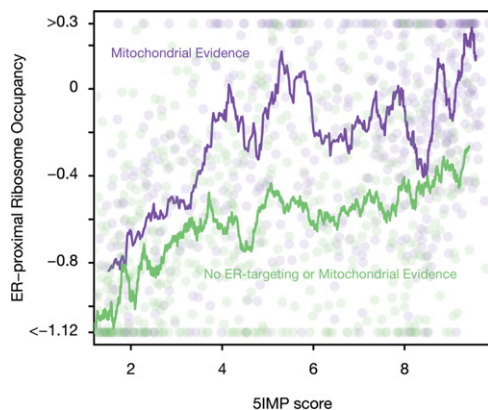
To more precisely determine where the codon optimality phenomenon occurs within the entire early coding region, we grouped transcripts by 5IMP score. For each group, we calculated the mean tAI at codons 2–33 (i.e., nts 4–99). Across this entire region, 5IM transcripts (5IMP >7.41; 5% FDR) had significantly lower tAI values at every codon except codons 24 and 32 (Fig. 3E; Wilcoxon Rank Sum test Holm-adjusted  $P < 0.05$  for all comparisons). To eliminate potential confounding variables, including nucleotide composition, we performed several additional control analyses (Materials and Methods); none of these altered the basic conclusion that 5IM transcripts have lower codon optimality than non-5IM transcripts across the entire early coding region.

- VI. "Ribosomes per mRNA." Finally, we examined the relationship between 5IMP score and translation efficiency, as measured by the steady-state number of ribosomes per mRNA molecule. To this end, we used a large set of ribosome profiling and RNA-seq experiments from human lymphoblastoid cell lines (Cenik et al. 2015). From this, we calculated the average number of ribosomes on each transcript and identified transcripts with high or low ribosome occupancy (respectively defined by occupancy at least one standard deviation above or below the mean; see Materials and Methods). 5IM transcripts were slightly but significantly depleted in the high ribosome-occupancy category (Fig. 3F; Fisher's exact test  $P = 0.0006$ , odds ratio = 1.3). Moreover, 5IMP scores exhibited a weak but significant negative correlation with the number of ribosomes per mRNA molecule (Spearman  $\rho = -0.11$ ;  $P = 5.98 \times 10^{-23}$ ).

Taken together, all of the above results reveal that 5IM transcripts have sequence features associated with lower translation efficiency, at the stages of both translation initiation and elongation.

### Non-ER trafficked 5IM transcripts are enriched in ER-proximal ribosome occupancy

We next investigated the relationship between 5IMP score and the localization of translation within cells. Exploring the subcellular localization of translation at a transcriptome-scale remains a significant challenge. Yet, a recent study described proximity-specific ribosome profiling to identify mRNAs occupied by ER-proximal ribosomes in both yeast and human cells (Jan et al. 2014). In this method, ribosomes are biotinylated based on their proximity to a marker protein such as Sec61, which localizes to the ER membrane (Jan et al. 2014). For each transcript, the enrichment for biotinylated ribosome occupancy yields a measure of ER-proximity of translated mRNAs.



**FIGURE 4.** 5IM transcripts are more likely to exhibit ER-proximal ribosome occupancy, even where there is no evidence of ER-targeting. A moving average of ER-proximal ribosome occupancy was calculated by grouping genes by 5IMP score (see Materials and Methods). We plotted the moving average of 5IMP scores for transcripts with no evidence of ER- or mitochondrial targeting (green) or for transcripts predicted to be mitochondrial (purple). We plotted a random subsample of transcripts on *top* of the moving average (circles).

We reanalyzed this data to explore the relationship between 5IMP scores and ER-proximal ribosome occupancy in HEK-293 cells. As expected, transcripts that exhibit the highest enrichment for ER-proximal ribosomes were SSCR-containing transcripts and transcripts with other ER-targeting signals. Yet, we noticed a surprising positive correlation between ER-proximal ribosome occupancy and 5IM transcripts with no ER-targeting evidence (Fig. 4). This relationship was true for both mitochondrial genes (Fig. 4; Spearman  $\rho = 0.43$ ;  $P < 2.2 \times 10^{-16}$ ) and genes with no evidence for either ER- or mitochondrial-targeting (Fig. 4; Spearman  $\rho = -0.36$ ;  $P < 2.2 \times 10^{-16}$ ). These results suggest that 5IM transcripts are more likely than non-5IM transcripts to engage with ER-proximal ribosomes.

### 5IM transcripts are strongly enriched in noncanonical EJC occupancy sites

Shared sequence features and functional traits among 5IM transcripts cause one to wonder what common mechanisms might link 5IM sequence features to 5IM traits. For example, 5IM transcripts might share regulation by one or more RNA-binding proteins (RBPs). To investigate this idea further, we tested for enrichment of 5IM transcripts among the experimentally identified targets of 25 different RBPs (including CLIP-seq and variants; see Materials and Methods). Only one data set was substantially enriched for high 5IMP scores among targets (Supplemental Fig. S2): a transcriptome-wide map of binding sites of the exon junction complex (EJC) in human cells, obtained via tandem-immunoprecipitation followed by deep sequencing (RIPiT) (Singh et al. 2012, 2014). The EJC is a multiprotein complex that is stably deposited

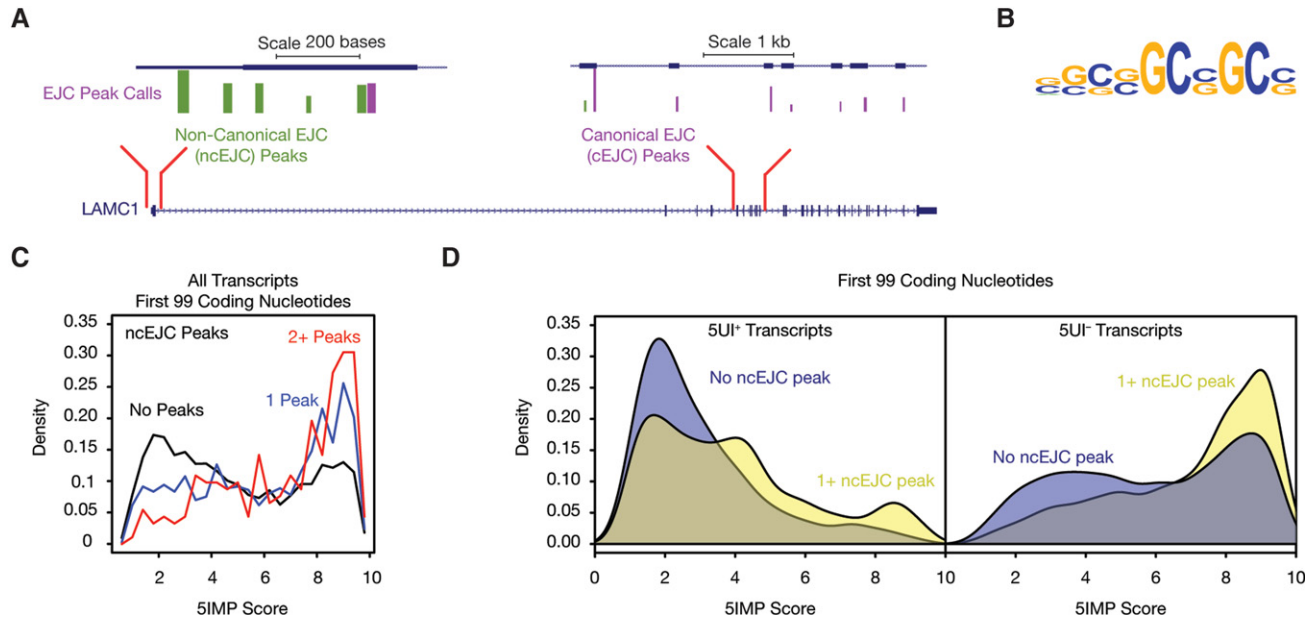
upstream of exon–exon junctions as a consequence of pre-mRNA splicing (Le Hir et al. 2000). RIPiT data confirmed that canonical EJC sites (cEJC sites; sites bound by EJC core factors and appearing  $\sim 24$  nt upstream of exon–exon junctions) occupy  $\sim 80\%$  of all possible exon–exon junction sites and are not associated with any sequence motif. Unexpectedly, many EJC-associated footprints outside of the canonical  $-24$  regions were observed (Fig. 5A; Singh et al. 2012). These “noncanonical” EJC occupancy sites (ncEJC sites) were associated with multiple sequence motifs, three of which were similar to known recognition motifs for SR proteins that copurified with the EJC core subunits (Singh et al. 2012). Interestingly, another motif (Fig. 5B; top) that was specifically found in first exons is not known to be bound by any known RNA-binding protein (Singh et al. 2012). This motif was CG-rich, a sequence feature that also defines 5IM transcripts. This similarity presages the possibility of enrichment of first exon ncEJC sites among 5IM transcripts.

Positional analysis of called EJC peaks revealed that while only 9% of cEJCs reside in first exons, 19% of all ncEJCs are found there. When we investigated the relationship between 5IMP scores and ncEJCs in early coding regions, we found a striking correspondence—the median 5IMP score was highest for transcripts with the greatest number of ncEJCs (Fig. 5C; Wilcoxon rank sum test;  $P < 0.0001$ ). When we repeated this analysis by conditioning on 5UI status, we similarly found that ncEJCs were enriched among transcripts with high 5IMP scores regardless of 5UI status (Fisher’s exact test,  $P < 3.16 \times 10^{-14}$ , odds ratio  $> 2.3$ ; Fig. 5D). These results suggest that the striking enrichment of ncEJC peaks in early coding regions was generally applicable to all transcripts with high 5IMP scores regardless of 5UI presence.

### Transcripts harboring $N^1$ -methyladenosine ( $m^1A$ ) have high 5IMP scores

It is increasingly clear that ribonucleotide base modifications in mRNAs are highly prevalent and can be a mechanism for post-transcriptional regulation (Frye et al. 2016). One RNA modification present toward the 5′ ends of mRNA transcripts is  $N^1$ -methyladenosine ( $m^1A$ ) (Dominissini et al. 2016; Li et al. 2016), which was initially identified in total RNA and rRNAs (Dunn 1961; Hall 1963; Klootwijk and Planta 1973). Intriguingly, the position of  $m^1A$  modifications has been shown to be more correlated with the position of the first intron than with transcriptional or translational start sites (Fig. 2G from Dominissini et al. 2016). When the distance of  $m^1A$ s to each splice site in a given mRNA was calculated, the first splice site was found to be the nearest one for 85% of  $m^1A$ s (Dominissini et al. 2016). When 5′UTR introns were present,  $m^1A$  was found to be near the first splice site regardless of the position of the start codon (Dominissini et al. 2016). Given that 5IM transcripts are also characterized by the position of the first intron, we investigated the





**FIGURE 5.** 5IM transcripts harbor noncanonical exon junction complex (EJC) binding sites. (A) Observed EJC binding sites (Singh et al. 2012) are shown for an example 5IM transcript (*LAMC1*). Canonical EJC binding sites (purple) are ~24 nt upstream of an exon–intron boundary. The remaining binding sites are considered to be noncanonical (green). (B) A CG-rich sequence motif previously identified to be enriched among ncEJC binding sites in first exons (Singh et al. 2012) is shown. (C) 5IMP score for transcripts with zero, one, two, or more noncanonical EJC binding sites in the first 99 coding nucleotides reveals that transcripts with high 5IMP scores frequently harbor noncanonical EJC binding sites. (D) Transcripts with high 5IMP scores are enriched for noncanonical EJCs regardless of 5UI presence or absence.

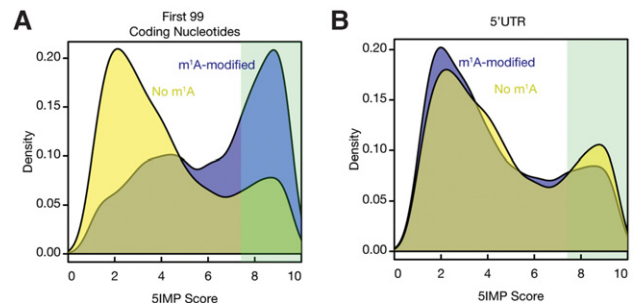
relationship between 5IMP score and  $m^1A$  RNA modification marks.

We analyzed the union of previously identified  $m^1A$  modifications (Dominissini et al. 2016) across all cell types and conditions. Although there is some evidence that these marks depend on cell type and growth condition, it is difficult to be confident of the cell type and condition-dependence of any particular mark given experimental variation (see Materials and Methods). Nevertheless, we found that mRNAs with  $m^1A$  modification early in the coding region (first 99 nt) had substantially higher 5IMP scores than mRNAs lacking these marks (Fig. 6A; Wilcoxon rank sum test  $P = 3.4 \times 10^{-265}$ ), and were greatly enriched among 5IM transcripts (Fig. 6A; Fisher's exact test  $P = 1.6 \times 10^{-177}$ ; odds ratio = 3.8). In other words, the sequence features within the early coding region that define 5IM transcripts also associate with  $m^1A$  modification in the early coding region.

We next wondered whether 5IMP score was related to  $m^1A$  modification generally, or only associated with  $m^1A$  modification in the early coding region. Indeed, many of the previously identified  $m^1A$  peaks were within the 5'UTRs of mRNAs (Li et al. 2016). Interestingly, 5IMP scores were only associated with  $m^1A$  modification in the early coding region and not with  $m^1A$  modification in the 5'UTR (Fig. 6B). This offers the intriguing possibility that the sequence features that define 5IMP transcripts are colocalized with  $m^1A$  modification.

## DISCUSSION

Coordinating the expression of functionally related transcripts can be achieved by post-transcriptional processes such as splicing, RNA export, RNA localization, or translation (Moore and Proudfoot 2009). Sets of mRNAs subject to a common regulatory transcriptional process can exhibit common sequence features that define them to be a class. For example, transcripts subject to regulation by particular miRNAs tend to share certain sequences in their 3'UTRs



**FIGURE 6.** 5IM transcripts are enriched for mRNAs with early coding region  $m^1A$  modifications. (A) Transcripts with  $m^1A$  modifications (blue) in the first 99 coding nucleotides exhibit significant enrichment for 5IM transcripts and have higher 5IMP scores than transcripts without  $m^1A$  modifications in the first 99 coding nucleotides (yellow). (B) Transcripts with  $m^1A$  modifications (blue) in the 5'UTR do not display a similar enrichment.

that are complementary to these regulatory miRNAs (Ameres and Zamore 2013). Similarly, transcripts that share a 5' terminal oligopyrimidine tract are coordinately regulated by mTOR and ribosomal protein S6 kinase (Meyuhas 2000). Here we quantitatively define “5IM” transcripts as a class that shares common sequence elements and functional properties. We estimate the 5IM class to comprise 21% of all human transcripts.

Whereas 35% of human transcripts have one or more 5'UTR introns, the majority of 5IM transcripts have neither a 5'UTR intron nor an intron in the first 90 nt of the ORF. Other shared features of 5IM transcripts include sequence features associated with low translation initiation rates. These are (i) a tendency for RNA secondary structure in the region immediately preceding the start codon (Fig. 3A), and near the 5' cap (Fig. 3B); (ii) translational up-regulation upon overexpression of eIF4E (Fig. 3C); and (iii) more frequent use of non-AUG start codons (Fig. 3D). Also consistent with low intrinsic translation efficiencies, 5IM transcripts additionally tend to depend on less abundant tRNAs to decode the beginning of the open reading frame (Fig. 3E). Taken together, our analyses support a model in which 5IM transcripts have properties that would normally lead to diminished translation efficiency. Future work will be needed to experimentally validate this computationally supported model.

We had previously reported that transcripts encoding proteins with ER- and mitochondrial-targeting signal sequences (SSCRs and MSCRs, respectively) are overrepresented among the 65% of transcripts lacking 5'UTR introns (Cenik et al. 2011). Transcripts in this set are enriched for the sequence features detected by our 5IM classifier. By examining these enriched sequence features, we showed that the 5IM class extends beyond mRNAs encoding membrane proteins. Jan et al. (2014) recently developed a transcriptome-scale method to identify mRNAs occupied by ER-proximal ribosomes in both yeast and human cells. As expected, transcripts known to encode ER-trafficked proteins were highly enriched for ER-proximal ribosome occupancy. However, their data also showed many transcripts encoding non-ER trafficked proteins to also be engaged with ER-proximal ribosomes (Reid and Nicchitta 2015b). Similarly, several other studies have suggested a critical role of ER-proximal ribosomes in translating several cytoplasmic proteins (Reid and Nicchitta 2015a). Here, we found that 5IM transcripts—including those that are not ER-trafficked or mitochondrial—were significantly more likely to exhibit binding to ER-proximal ribosomes (Fig. 4).

In addition to ribosomes directly resident on the ER, an interesting possibility is the presence of a pool of peri-ER ribosomes (Jan et al. 2015; Reid and Nicchitta 2015a). Association of 5IM transcripts with such a peri-ER ribosome pool could potentially explain the observed correlation of 5IM status with binding to ER-proximal ribosomes. The ER is physically proximal to mitochondria (Rowland and Voeltz 2012), so peri-ER ribosomes may include those translating mRNAs on mitochondria (i.e., mRNAs with MSCRs)

(Sylvestre et al. 2003). However, even when transcripts corresponding to ER-trafficked and mitochondrial proteins were excluded from consideration, ER-proximal ribosome enrichment and 5IMP scores were highly correlated (Fig. 4). Thus another shared feature of 5IM transcripts is their translation on or near the ER regardless of the ultimate destination of the encoded protein.

In an attempt to identify a common factor binding 5IM transcripts, we asked whether 5IM transcripts were enriched among the experimentally identified targets of 25 RBPs. Only one RBP emerged—the exon junction complex (EJC). Specifically, we observed a dramatic enrichment of non-canonical EJC (ncEJC) binding sites within the early coding region of 5IM transcripts. Further, the CG-rich motif identified for ncEJCs in first exons is strikingly similar to the CG-rich motif enriched in the first exons of 5IM transcripts (Fig. 5B). The interaction between the cap-binding proteins and splicing machinery (Izaurre et al. 1994; Pabis et al. 2013) may also be pertinent to first exons and ncEJC deposition. Previous work implicated RanBP2, a protein associated with the cytoplasmic face of the nuclear pore, as a binding factor for some SSCRs (Mahadevan et al. 2013). This finding suggests that nuclear pore proteins may influence EJC occupancy on these transcripts.

EJC deposition during the process of pre-mRNA splicing enables the nuclear history of an mRNA to influence post-transcriptional processes including mRNA localization, translation efficiency, and nonsense-mediated decay (Chang et al. 2007; Kervestin and Jacobson 2012; Choe et al. 2014). While canonical EJC binding occurs at a fixed distance upstream of exon–exon junctions and involves direct contact between the sugar–phosphate backbone and the EJC core anchoring protein eIF4AIII, ncEJC binding sites likely reflect stable engagement between the EJC core and other mRNP proteins (e.g., SR proteins) recognizing nearby sequence motifs. Although some RBPs were identified for ncEJC motifs found in internal exons (Singh et al. 2012, 2014), to date no candidate RBP has been identified for the CG-rich ncEJC motif found in the first exon. If this motif does result from an RBP interaction, it is likely to be one or more of the ~70 proteins that stably and specifically bind to the EJC core (Singh et al. 2012).

Finally, we observed a dramatic enrichment for m<sup>1</sup>A modifications among 5IM transcripts, with specific enrichment for m<sup>1</sup>A modifications in the early coding region. Given this striking enrichment it is perhaps not surprising that m<sup>1</sup>A containing mRNAs were also shown to have more structured 5'UTRs that are CG-rich compared to m<sup>1</sup>A lacking mRNAs (Dominissini et al. 2016). Similar to 5IM transcripts, m<sup>1</sup>A-containing mRNAs were found to decorate start codons that appear in a highly structured context. While ALKBH3 has been identified as a protein that can demethylate m<sup>1</sup>A, it is currently unknown whether there are any proteins that can specifically act as “readers” of m<sup>1</sup>A. Recent studies have begun to identify such readers for other mRNA modifications

such as YTHDF1, YTHDF2, WTAP, and HNRNPA2B1 (Liu et al. 2014; Ping et al. 2014; Wang et al. 2014, 2015; Alarcón et al. 2015). Our study highlights a possible link between noncanonical EJC binding and m<sup>1</sup>A. Hence, our results yield the intriguing hypothesis that one or more of the ~70 proteins that stably and specifically bind to the EJC core can function as an m<sup>1</sup>A reader. Future work involving directed experiments would be needed to test this hypothesis.

Given that 5IM transcripts are enriched for ER-targeted and mitochondrial proteins, it is plausible that the observed functional characteristics of 5IM transcripts are driven solely by SSCR and MSCR-containing transcripts. Hence, we repeated all analyses for the subclasses of 5IM transcripts (MSCR-containing, SSCR-containing, S<sup>-</sup>/M<sup>-</sup>/SignalP<sup>+</sup>, or S<sup>-</sup>/M<sup>-</sup>/SignalP<sup>-</sup>). We found the observed associations had the same direction of effect, even after eliminating SSCR- and MSCR-containing transcripts, despite the fact that all training of the 5IM classifier was performed using only SSCR transcripts (Supplemental Figs. S3–S9). We also found that 5IMP score was equally or more strongly associated with each of the functional characteristics compared to the 5UI status. In conclusion, the molecular associations we report apply to 5IM transcripts as a whole, and are not driven solely by the subset of 5IM transcripts encoding ER- or mitochondria-targeting signal peptides, and seem to indicate shared features beyond simple lack of a 5'UTR intron.

An intriguing possibility is that 5IM transcript features associated with lower intrinsic translation efficiency may together enable greater “tunability” of 5IM transcripts at the translation stage. Regulated enhancement or repression of translation, for 5IM transcripts, could allow for rapid changes in protein levels. There are analogies to this scenario in transcriptional regulation, wherein highly regulated genes often have promoters with low baseline levels that can be rapidly modulated through the action of regulatory transcription factors. As more ribosome profiling studies are published examining translational responses transcriptome-wide under multiple perturbations, conditions under which 5IM transcripts are translationally regulated may be revealed. Directed experiments will be needed to test translational status of 5IM transcripts hypothesized via this computational analysis.

Taken together, our analyses reveal the existence of a distinct “5IM” class comprising 21% of human transcripts. This class is defined by depletion of 5' proximal introns, presence of specific RNA sequence features associated with low translation efficiency, noncanonical binding by the EJC and an enrichment for N<sup>1</sup>-methyladenosine modification.

## MATERIALS AND METHODS

### Data sets and annotations

Human transcript sequences were downloaded from the NCBI Human Reference Gene Collection (RefSeq) via the UCSC Table Browser (hg19) on June 25, 2010 (Kent et al. 2002; Pruitt et al.

2005). Transcripts with fewer than three coding exons, and transcripts where the first 99 coding nucleotides straddle more than two exons were removed from further consideration. The criteria for exclusion of genes with fewer than three coding exons were to ensure that the analysis of downstream regions was possible for all genes that were used in our analysis of early coding regions. Specifically, the downstream regions were selected randomly from downstream from the third exons. Hence, genes with fewer exons would not be able to contribute a downstream region, potentially creating a skew in representation. In total there were ~3000 genes that were removed from consideration due to this filter. Therefore, our classifier is limited in its ability to assess transcripts from these genes. However, the performance measures reported in our manuscript are robust to exclusion of these genes, in the sense that the same class of transcripts was used in both training and test data sets.

Transcripts were clustered based on sequence similarity in the first 99 coding nucleotides. Specifically, each transcript pair was aligned using BLAST with the DUST filter disabled (Altschul et al. 1990). Transcript pairs with BLAST *E*-values  $<1 \times 10^{-25}$  were grouped into transcript clusters. In total, there were 15,576 transcript clusters that were considered further. These clusters were subsequently assigned to one of four categories: MSCR-containing, SSCR-containing, S<sup>-</sup>/MSCR<sup>-</sup> SignalP<sup>+</sup>, or S<sup>-</sup>/MSCR<sup>-</sup> SignalP<sup>-</sup> as follows:

MSCR-containing transcripts were annotated using MitoCarta and other sources as described in Cenik et al. (2011). SSCR-containing transcripts were the set of transcripts annotated to contain signal peptides in the Ensembl Gene v.58 annotations, which were downloaded through Biomart on June 25, 2010. For transcripts without an annotated MSCR or SSCR, the first 70 amino acids were analyzed using SignalP 3.0 (Bendtsen et al. 2004). Using the eukaryotic prediction mode, transcripts were assigned to the S<sup>-</sup>/MSCR<sup>-</sup> SignalP<sup>+</sup> category if either the hidden Markov model or the Artificial Neural Network classified the sequence as signal peptide containing. All remaining transcript clusters were assigned to the S<sup>-</sup>/MSCR<sup>-</sup> SignalP<sup>-</sup> category. The number of transcript clusters in each of the four categories was: 3743 SSCR, 737 MSCR, 696 S<sup>-</sup>/MSCR<sup>-</sup> SignalP<sup>+</sup>, 10400 S<sup>-</sup>/MSCR<sup>-</sup> SignalP<sup>-</sup>.

For each transcript cluster, we also constructed matched control sequences. Control sequences were derived from a single randomly chosen in-frame “window” downstream from the third exon from the evaluated transcripts. If an evaluated transcript had fewer than 99 nt downstream from the third exon, no control sequence was extracted. 5UI labels and transcript clustering for the control sequences were inherited from the evaluated transcript. The rationale for this decision is that our analysis depends on the position of the first intron; hence genes with fewer than two exons need to be excluded, as these will not have introns. We further required the matched control sequences to fall downstream of the early coding region. In the vast majority of cases the third exon fell outside the first 99 nt of the coding region, making this a convenient criterion by which to choose control regions.

### Sequence features and motif discovery

Thirty-six sequence features were extracted from each transcript (Supplemental Table S1). The sequence features included the ratio of arginines to lysines, the ratio of leucines to isoleucines, adenine content, the length of the longest stretch without adenines, and preference against codons that contain adenines or thymines. These features were previously found to be enriched in SSCR-containing and

certain 5UI<sup>-</sup> transcripts (Palazzo et al. 2007; Cenik et al. 2011). In addition, we extracted ratios between several other amino acid pairs based on having biochemical/evolutionary similarity, i.e., having positive scores, according to the BLOSUM62 matrix (Henikoff and Henikoff 1992). To avoid extreme ratios given the relatively short sequence length, amino acid ratios were regularized by distributing additional pseudo-counts to raw amino acid counts in proportion to proteome-wide amino-acid prevalence.

In addition, we used three published motif-finding algorithms (AlignACE, DEME, and MoAN [Roth et al. 1998; Redhead and Bailey 2007; Valen et al. 2009]) to discover RNA sequence motifs enriched among 5UI<sup>-</sup> transcripts. AlignACE (Roth et al. 1998), which implements a Gibbs sampling approach for motif discovery, was modified to restrict motif searches to only the forward strand of the input sequences to enable RNA motif discovery. DEME and MoAN adopt discriminative approaches to motif finding by searching for motifs that are differentially enriched between two sets of sequences (Redhead and Bailey 2007; Valen et al. 2009). MoAN has the additional advantage of discovering variable length motifs, and can identify co-occurring motifs with the highest discriminative power.

In total, six motifs were discovered using the three motif finding algorithms (Supplemental Table S1). Position-specific scoring matrices for all motifs were used to score the first  $99 - l$  positions in each sequence, where  $l$  is the length of the motif. We assessed the significance of each motif instance by calculating the  $P$ -value of enrichment (Fisher's exact test) among 5UI<sup>-</sup> transcripts considering all transcripts with a motif instance achieving a PSSM score greater than or equal to the instance under consideration. The significance score and position of the two best motif instances were used as features for the classifier (Supplemental Table S1).

### 5IM classifier training and performance evaluation

We modified an implementation of the random forest classifier (Breiman 2001) to model the relationship between sequence features in the early coding region and the absence of 5'UTR introns (5UIs). This classifier discriminates transcripts with 5'proximal-intron-minus-like-coding regions and hence is named the "5IM" classifier. The training set for the classifier was composed of SSCR transcripts exclusively. There were two reasons to restrict model construction to SSCR transcripts: (i) we expected the presence of specific RNA elements as a function of 5UI presence based on our previous work (Cenik et al. 2011); and (ii) we wanted to restrict model building to sequences that have similar functional constraints at the protein level.

We observed that 5UI<sup>-</sup> transcripts with introns proximal to the 5' end of the coding region have sequence characteristics similar to 5UI<sup>+</sup> transcripts (Fig. 1D). To systematically characterize this relationship, we built different classifiers using training sets that excluded 5UI<sup>-</sup> transcripts with a coding region intron positioned at increasing distances from the start codon. We evaluated the performance of each classifier using 10-fold cross validation.

Given that a large number of motif discovery iterations were needed, we sought to reduce the computational burden. We isolated a subset of the training examples to be used exclusively for motif finding. Motif discovery was performed once using this set of sequences, and the same motifs were used in each fold of the cross validation for all the classifiers. Imbalances between the sizes of positive and negative training examples can lead to detrimental classification

performance (Wang and Yao 2012). Hence, we balanced the training set size of 5UI<sup>-</sup> and 5UI<sup>+</sup> transcripts by randomly sampling from the larger class. We constructed 10 subclassifiers to reduce sampling bias, and for each test example, the prediction score from each subclassifier was summed to produce a combined score between 0 and 10. For the rest of the analyses, we used the classifier trained using 5UI<sup>-</sup> transcripts where the first coding intron falls outside the first 90 coding nucleotides (Fig. 1E).

We evaluated classifier performance using a 10-fold cross validation strategy for SSCR-containing transcripts (i.e., the training set). In each fold of the cross-validation, the model was trained without any information from the held-out examples, including motif discovery. For all the other transcripts and the control sets (see above), the 5IMP scores were calculated using the classifier trained using SSCR transcripts as described above. 5IMP score distribution for the control set was used to calculate the empirical cumulative null distribution. Using this function, we determined the  $P$ -value corresponding to the 5IMP score for all transcripts. We corrected for multiple hypotheses testing using the  $q$ value R package (Storey 2003). Based on this analysis, we estimate that a 5IMP score of 7.41 corresponds to a 5% false discovery rate and suggest that 21% of all human transcripts can be considered as 5IM transcripts.

While the theoretical range of 5IMP scores is 0–10, the highest observed 5IMP is 9.855. We note that for all figures that depict 5IMP score distributions, we displayed the entire theoretical range of 5IMP scores (0–10).

### Functional characterization of 5IM transcripts

We collected genome-scale data sets from publicly available databases and from supplementary information provided in selected articles. For all analyzed data sets, we first converted all gene/transcript identifiers (IDs) into RefSeq transcript IDs using the Synergizer web-server (Berriz and Roth 2008). If a data set was generated using a nonhuman species (e.g., targets identified by TDP-43 RNA immunoprecipitation in rat neuronal cells), we used HomoloGene release 64 (downloaded on September 28, 2009) to identify the corresponding ortholog in humans. If at least one member of a transcript cluster was associated with a functional phenotype, we assigned the cluster to the positive set with respect to the functional phenotype. If more than one member of a cluster had the functional phenotype, we only retained one copy of the cluster unless they differed in a quantitative measurement. For example, consider two hypothetical transcripts: NM\_1 and NM\_2 that were clustered together and have a 5IMP score of 8.5. If NM\_1 had an mRNA half-life of 2 h while NM\_2's half-life was 1 h, then we split the cluster while preserving the 5IMP score for both NM\_1 and NM\_2.

Once the transcripts were partitioned based on the functional phenotype, we ran two statistical tests: (i) Fisher's exact test for enrichment of 5IM transcripts within the functional category; (ii) Wilcoxon rank sum test to compare 5IMP scores between transcripts partitioned by the functional phenotype. Additionally, for data sets where a quantitative measurement was available (e.g. mRNA half-life), we calculated the Spearman rank correlation between 5IMP scores and the quantitative variable. In these analyses, we assumed that the test space was the entire set of RefSeq transcripts. For all phenotypes where we observed a preliminary statistically significant result, we followed up with more detailed analyses described below.

## Analysis of features associated with translation

For each transcript, we predicted the propensity for secondary structure preceding the translation start site and following the 5' cap. Specifically, we extracted 35 nt preceding the translation start site or the first 35 nt of the 5'UTR. If a 5'UTR was shorter than 35 nt, the transcript was removed from the analysis. Hybrid-ss-min utility (UNAFold package version 3.8) with default parameters was used to calculate the minimum folding energy (Markham and Zuker 2008).

Codon optimality was measured using the tRNA Adaptation Index (tAI), which is based on the genomic copy number of each tRNA (dos Reis et al. 2004). tAI for all human codons were downloaded from Tuller et al. (2010); Supplemental Table S1. tAI profiles for the first 30 amino acids were calculated for all transcripts. Codon optimality profiles were summarized for the first 30 amino acids for each transcript or by averaging tAI at each codon.

We carried out two control experiments to test whether the association between 5IMP score and tAI could be explained by confounding variables. First, we permuted the nucleotides in the first 90 nt and observed no relationship between 5IMP score and mean tAI when these permuted sequences were used (Supplemental Fig. S1). Second, we selected random in-frame 99 nt from the third exon to the end of the coding region and found no significant differences in tAI (Supplemental Fig. S1). These results suggest that the relationship between tAI and 5IMP score is confined to the first 30 amino acids and is not explained by simple differences in nucleotide composition.

Ribosome profiling and RNA expression data for human lymphoblastoid cells (LCLs) were downloaded from NCBI GEO database accession number GSE65912. Translation efficiency was calculated as previously described (Cenik et al. 2015). Median translation efficiency across the different cell types was used for each transcript.

## Analysis of proximity-specific ribosome profiling data

We downloaded proximity-specific ribosome profiling data for HEK 293 cells from Jan et al. (2014), Table S6. We converted UCSC gene identifiers to HGNC symbols using g:Profiler (Reimand et al. 2011). We retained all genes with an RPKM >5 in either input or pulldown and required that at least 30 reads were mapped in either of the two libraries. We used ER-targeting evidence categories “secretome,” “phobius,” “TMHMM,” “SignalP,” “signalSequence,” “signalAnchor” from Jan et al. (2014) to annotate genes as having ER-targeting evidence. The genes that did not have any ER-targeting evidence or “mitoCarta”/“mito.GO” annotations were deemed as the set of genes with no ER-targeting or mitochondrial evidence. We calculated the log<sub>2</sub> of the ratio between ER-proximal ribosome pulldown RPKM and control RPKM as the measure of enrichment for ER-proximal ribosome occupancy (as described in Jan et al. 2014). A moving average of this ratio was calculated for genes grouped by their 5IMP score. For this calculation, we used bins of 30 mitochondrial genes or 100 genes with no evidence of ER- or mitochondrial targeting.

## Analysis of genome-wide binding sites of exon junction complex

Dr. Gene Yeo and Gabriel Pratt (pers. comm.) generously shared uniformly processed peak calls for experiments identifying human

RNA binding protein targets. We first filtered all data sets (Supplemental Table S4) to retain experiments that contain at least 100 significant peaks. We then converted the target gene names from Ensembl gene identifiers to RefSeq transcripts as before. These data sets include various CLIP-seq data sets and their variants such as iCLIP. A total of 24 factors were analyzed. These factors were: hnRNPA1, hnRNPF, hnRNPM, hnRNPU, Ago2, hnRNPU, HuR, IGF2BP1, IGF2BP2, IGF2BP3, FMR1, FXR1, FXR2, eIF4AIII, PTB, IGF2BP1, Ago3, Ago4, MOV10, Fip1, CF Im68, CF Im59, CF Im25, and hnRNPA2B1. We extracted the 5IMP scores for all targets of each RBP. When a particular RBP was assayed in a given cell type across multiple experiments and replicates, we merged all targets such that we considered any gene that was identified in any experiment for the given RBP as a potential target. We calculated the Wilcoxon rank sum test statistic comparing the 5IMP score distribution of the targets of each RBP to all other transcripts with 5IMP scores. None of the tested RBP target sets had a Bonferroni adjusted *P*-value <0.05 and a median difference in 5IMP score >1 when compared to nontarget transcripts.

In addition, we used RNA:protein immunoprecipitation in tandem (RIPiT) data to determine EJC binding sites (Singh et al. 2012, 2014). We analyzed the common peaks from the Y14-Magoh immunoprecipitation configuration (Singh et al. 2012; Kucukural et al. 2013). Canonical EJC binding sites were defined as peaks whose weighted centers were 15–32 nucleotides upstream of an exon–intron boundary. All remaining peaks were deemed as “non-canonical” EJC binding sites. We extracted all noncanonical peaks that overlapped the first 99 nt of the coding region and restricted our analysis to transcripts that had an RPKM greater than one in the matched RNA-seq data.

## Analysis of m<sup>1</sup>A modified transcripts

We downloaded the list of RNAs observed to contain m<sup>1</sup>A from Li et al. (2016) and Dominissini et al. (2016). RefSeq transcript identifiers were converted to HGNC symbols using g:Profiler (Reimand et al. 2011). The overlap between the two data sets was determined using HGNC symbols. m<sup>1</sup>A modifications that overlap the first 99 nt of the coding region were determined using BEDTools (Quinlan and Hall 2010).

Li et al. (2016) identified 600 transcripts with m<sup>1</sup>A modification in normal HEK293 cells. Of these, 368 transcripts were not found to contain the m<sup>1</sup>A modification in HEK293 cells by Dominissini et al. (2016). Yet, 81% of these were found to be m<sup>1</sup>A modified in other cell types. Li et al. (2016) also analyzed m<sup>1</sup>A upon H<sub>2</sub>O<sub>2</sub> treatment and serum starvation in HEK293 cells and identified many m<sup>1</sup>A modifications that are only found under these stress conditions. However, 20% of 371 transcripts harboring stress-induced m<sup>1</sup>A modifications were found in normal HEK293 cells by Dominissini et al. (2016). Taken together, these analyses suggest that transcriptome-wide m<sup>1</sup>A maps remain incomplete. Hence, we analyzed the 5IMP scores of all mRNAs with m<sup>1</sup>A across cell types and conditions. We reported results using the Dominissini et al. (2016) data set but the same conclusions were supported by m<sup>1</sup>A modifications from Li et al. (2016).

## SUPPLEMENTAL MATERIAL

Supplemental material is available for this article.

## ACKNOWLEDGMENTS

We thank Gene Yeo and Gabriel Pratt for sharing peak calls for RNA-binding protein target identification experiments (CLIP, PAR-CLIP, iCLIP). We thank Elif Sarinay Cenik, Başar Cenik, and Alper Küçükural for helpful discussions. F.P.R. and H.N.C. were supported by the Canada Excellence Research Chairs Program. This work was supported in part by National Institutes of Health grants CA204522 (C.C.), GM053007 (M.J.M.), HG001715, and HG004233 (F.P.R.), the Krembil Foundation, an Ontario Research Fund award, and the Avon Foundation (F.P.R.). A.F.P. was supported by a grant from the Canadian Institutes of Health Research to A.F.P. (FRN 102725).

*Author contributions:* C.C., M.J.M., and F.P.R. designed the study. C.C. and H.N.C. implemented the random forest classifier and carried out all analyses. G.S. and A.A. performed initial experiments. M.P.S. and A.F.P. provided critical feedback. M.J.M. and F.P.R. jointly supervised the project. C.C., F.P.R., and M.J.M. wrote the manuscript with input from all authors.

Received September 5, 2016; accepted December 14, 2016.

## REFERENCES

- Alarcón CR, Goodarzi H, Lee H, Liu X, Tavazoie S, Tavazoie SF. 2015. HNRNPA2B1 is a mediator of m<sup>6</sup>A-dependent nuclear RNA processing events. *Cell* **162**: 1299–1308.
- Altschul SF, Gish W, Miller W, Myers EW, Lipman DJ. 1990. Basic local alignment search tool. *J Mol Biol* **215**: 403–410.
- Ameres SL, Zamore PD. 2013. Diversifying microRNA sequence and function. *Nat Rev Mol Cell Biol* **14**: 475–488.
- Babendure JR, Babendure JL, Ding J-H, Tsien RY. 2006. Control of mammalian translation by mRNA structure near caps. *RNA* **12**: 851–861.
- Bendtsen JD, Nielsen H, von Heijne G, Brunak S. 2004. Improved prediction of signal peptides: SignalP 3.0. *J Mol Biol* **340**: 783–795.
- Berriz GF, Roth FP. 2008. The Synergizer service for translating gene, protein and other biological identifiers. *Bioinformatics* **24**: 2272–2273.
- Breiman L. 2001. Random forests. *Mach Learn* **45**: 5–32.
- Cenik C, Derti A, Mellor JC, Berriz GF, Roth FP. 2010. Genome-wide functional analysis of human 5' untranslated region introns. *Genome Biol* **11**: R29.
- Cenik C, Chua HN, Zhang H, Tarnawsky SP, Akef A, Derti A, Tasan M, Moore MJ, Palazzo AF, Roth FP. 2011. Genome analysis reveals interplay between 5'UTR introns and nuclear mRNA export for secretory and mitochondrial genes. *PLoS Genet* **7**: e1001366.
- Cenik C, Sarinay Cenik E, Byeon GW, Grubert F, Candille SI, Spacek D, Alsallakh B, Tilgner H, Araya CL, Tang H, et al. 2015. Integrative analysis of RNA, translation and protein levels reveals distinct regulatory variation across humans. *Genome Res* **25**: 1610–1621.
- Chang Y-F, Imam JS, Wilkinson MF. 2007. The nonsense-mediated decay RNA surveillance pathway. *Annu Rev Biochem* **76**: 51–74.
- Charneski CA, Hurst LD. 2013. Positively charged residues are the major determinants of ribosomal velocity. *PLoS Biol* **11**: e1001508.
- Choe J, Ryu I, Park OH, Park J, Cho H, Yoo JS, Chi SW, Kim MK, Song HK, Kim YK. 2014. eIF4AIII enhances translation of nuclear cap-binding complex-bound mRNAs by promoting disruption of secondary structures in 5'UTR. *Proc Natl Acad Sci* **111**: E4577–E4586.
- Dominissini D, Nachtergaele S, Moshitch-Moshkovitz S, Peer E, Kol N, Ben-Haim MS, Dai Q, Di Segni A, Salmon-Divon M, Clark WC, et al. 2016. The dynamic N<sup>1</sup>-methyladenosine methylome in eukaryotic messenger RNA. *Nature* **530**: 441–446.
- dos Reis M, Savva R, Wernisch L. 2004. Solving the riddle of codon usage preferences: a test for translational selection. *Nucleic Acids Res* **32**: 5036–5044.
- Dunn DB. 1961. The occurrence of 1-methyladenine in ribonucleic acid. *Biochim Biophys Acta* **46**: 198–200.
- Frye M, Jaffrey SR, Pan T, Rechavi G, Suzuki T. 2016. RNA modifications: what have we learned and where are we headed? *Nat Rev Genet* **17**: 365–372.
- Gerashchenko MV, Gladyshev VN. 2015. Translation inhibitors cause abnormalities in ribosome profiling experiments. *Nucleic Acids Res* **42**: e134.
- Gingold H, Pilpel Y. 2011. Determinants of translation efficiency and accuracy. *Mol Syst Biol* **7**: 481.
- Hall RH. 1963. Method for isolation of 2'-O-methylribonucleosides and N<sup>1</sup>-methyladenosine from ribonucleic acid. *Biochim Biophys Acta* **68**: 278–283.
- Henikoff S, Henikoff JG. 1992. Amino acid substitution matrices from protein blocks. *Proc Natl Acad Sci* **89**: 10915–10919.
- Hershberg R, Petrov DA. 2008. Selection on codon bias. *Annu Rev Genet* **42**: 287–299.
- Hinnebusch AG, Lorsch JR. 2012. The mechanism of eukaryotic translation initiation: new insights and challenges. *Cold Spring Harb Perspect Biol* **4**: a011544.
- Hong X, Scofield DG, Lynch M. 2006. Intron size, abundance, and distribution within untranslated regions of genes. *Mol Biol Evol* **23**: 2392–2404.
- Izaurralde E, Lewis J, McGuigan C, Jankowska M, Darzynkiewicz E, Mattaj JW. 1994. A nuclear cap binding protein complex involved in pre-mRNA splicing. *Cell* **78**: 657–668.
- Jan CH, Williams CC, Weissman JS. 2014. Principles of ER cotranslational translocation revealed by proximity-specific ribosome profiling. *Science* **346**: 1257521.
- Jan CH, Williams CC, Weissman JS. 2015. Response to Comment on “Principles of ER cotranslational translocation revealed by proximity-specific ribosome profiling”. *Science* **348**: 1217.
- Kent WJ, Sugnet CW, Furey TS, Roskin KM, Pringle TH, Zahler AM, Haussler D. 2002. The human genome browser at UCSC. *Genome Res* **12**: 996–1006.
- Kervestin S, Jacobson A. 2012. NMD: a multifaceted response to premature translational termination. *Nat Rev Mol Cell Biol* **13**: 700–712.
- Klootwijk J, Planta RJ. 1973. Analysis of the methylation sites in yeast ribosomal RNA. *Eur J Biochem* **39**: 325–333.
- Kucukural A, Özadam H, Singh G, Moore MJ, Cenik C. 2013. ASPeak: an abundance sensitive peak detection algorithm for RIP-Seq. *Bioinformatics* **29**: 2485–2486.
- Larsson O, Li S, Issaenko OA, Avdulov S, Peterson M, Smith K, Bitterman PB, Polunovsky VA. 2007. Eukaryotic translation initiation factor 4E-induced progression of primary human mammary epithelial cells along the cancer pathway is associated with targeted translational deregulation of oncogenic drivers and inhibitors. *Cancer Res* **67**: 6814–6824.
- Le Hir H, Izaurralde E, Maquat LE, Moore MJ. 2000. The spliceosome deposits multiple proteins 20–24 nucleotides upstream of mRNA exon-exon junctions. *EMBO J* **19**: 6860–6869.
- Lee ES, Akef A, Mahadevan K, Palazzo AF. 2015. The consensus 5' splice site motif inhibits mRNA nuclear export. *PLoS One* **10**: e0122743.
- Li X, Xiong X, Wang K, Wang L, Shu X, Ma S, Yi C. 2016. Transcriptome-wide mapping reveals reversible and dynamic N<sup>1</sup>-methyladenosine methylome. *Nat Chem Biol* **12**: 311–316.
- Liu J, Yue Y, Han D, Wang X, Fu Y, Zhang L, Jia G, Yu M, Lu Z, Deng X, et al. 2014. A METTL3–METTL14 complex mediates mammalian nuclear RNA N<sup>6</sup>-adenosine methylation. *Nat Chem Biol* **10**: 93–95.
- Mahadevan K, Zhang H, Akef A, Cui XA, Gueroussou S, Cenik C, Roth FP, Palazzo AF. 2013. RanBP2/Nup358 potentiates the translation of a subset of mRNAs encoding secretory proteins. *PLoS Biol* **11**: e1001545.
- Marintchev A, Edmonds KA, Marintcheva B, Hendrickson E, Oberer M, Suzuki C, Herdy B, Sonenberg N, Wagner G. 2009. Topology and regulation of the human eIF4A/4G/4H helicase complex in translation initiation. *Cell* **136**: 447–460.
- Markham NR, Zuker M. 2008. UNAFold: software for nucleic acid folding and hybridization. *Methods Mol Biol* **453**: 3–31.

- Meyuhas O. 2000. Synthesis of the translational apparatus is regulated at the translational level. *Eur J Biochem* **267**: 6321–6330.
- Moore MJ, Proudfoot NJ. 2009. Pre-mRNA processing reaches back to transcription and ahead to translation. *Cell* **136**: 688–700.
- Pabis M, Neufeld N, Steiner MC, Bojic T, Shav-Tal Y, Neugebauer KM. 2013. The nuclear cap-binding complex interacts with the U4/U6-U5 tri-snRNP and promotes spliceosome assembly in mammalian cells. *RNA* **19**: 1054–1063.
- Palazzo AF, Springer M, Shibata Y, Lee C-S, Dias AP, Rapoport TA. 2007. The signal sequence coding region promotes nuclear export of mRNA. *PLoS Biol* **5**: e322.
- Palazzo AF, Mahadevan K, Tarnawsky SP. 2013. ALREX-elements and introns: two identity elements that promote mRNA nuclear export. *Wiley Interdiscip Rev RNA* **4**: 523–533.
- Parsyan A, Svitkin Y, Shahbazian D, Gkogkas C, Lasko P, Merrick WC, Sonenberg N. 2011. mRNA helicases: the tacticians of translational control. *Nat Rev Mol Cell Biol* **12**: 235–245.
- Ping XL, Sun BF, Wang L, Xiao W, Yang X, Wang WJ, Adhikari S, Shi Y, Lv Y, Chen Y-S, et al. 2014. Mammalian WTAP is a regulatory subunit of the RNA  $N^6$ -methyladenosine methyltransferase. *Cell Res* **24**: 177–189.
- Pruitt KD, Tatusova T, Maglott DR. 2005. NCBI Reference Sequence (RefSeq): a curated non-redundant sequence database of genomes, transcripts and proteins. *Nucleic Acids Res* **33**: D501–D504.
- Quinlan AR, Hall IM. 2010. BEDTools: a flexible suite of utilities for comparing genomic features. *Bioinformatics* **26**: 841–842.
- Redhead E, Bailey TL. 2007. Discriminative motif discovery in DNA and protein sequences using the DEME algorithm. *BMC Bioinformatics* **8**: 385.
- Reid DW, Nicchitta CV. 2015a. Diversity and selectivity in mRNA translation on the endoplasmic reticulum. *Nat Rev Mol Cell Biol* **16**: 221–231.
- Reid DW, Nicchitta CV. 2015b. Comment on “Principles of ER cotranslational translocation revealed by proximity-specific ribosome profiling”. *Science* **348**: 1217.
- Reimand J, Arak T, Vilo J. 2011. g: Profiler—a web server for functional interpretation of gene lists (2011 update). *Nucleic Acids Res* **39**: W307–W315.
- Roth FP, Hughes JD, Estep PW, Church GM. 1998. Finding DNA regulatory motifs within unaligned noncoding sequences clustered by whole-genome mRNA quantitation. *Nat Biotechnol* **16**: 939–945.
- Rowland AA, Voeltz GK. 2012. Endoplasmic reticulum-mitochondria contacts: function of the junction. *Nat Rev Mol Cell Biol* **13**: 607–625.
- Shah P, Ding Y, Niemczyk M, Kudla G, Plotkin JB. 2013. Rate-limiting steps in yeast protein translation. *Cell* **153**: 1589–1601.
- Singh G, Kucukural A, Cenik C, Leszyk JD, Shaffer SA, Weng Z, Moore MJ. 2012. The cellular EJC interactome reveals higher-order mRNP structure and an EJC-SR protein nexus. *Cell* **151**: 750–764.
- Singh G, Ricci EP, Moore MJ. 2014. RIPit-Seq: a high-throughput approach for footprinting RNA:protein complexes. *Methods* **65**: 320–332.
- Storey JD. 2003. The positive false discovery rate: a Bayesian interpretation and the q-value. *Ann Stat* **31**: 2013–2035.
- Sylvestre J, Vialette S, Corral Debrinski M, Jacq C. 2003. Long mRNAs coding for yeast mitochondrial proteins of prokaryotic origin preferentially localize to the vicinity of mitochondria. *Genome Biol* **4**: R44.
- Tuller T, Carmi A, Vestsigian K, Navon S, Dorfan Y, Zaborske J, Pan T, Dahan O, Furman I, Pilpel Y. 2010. An evolutionarily conserved mechanism for controlling the efficiency of protein translation. *Cell* **141**: 344–354.
- Valen E, Sandelin A, Winther O, Krogh A. 2009. Discovery of regulatory elements is improved by a discriminatory approach. *PLoS Comput Biol* **5**: e1000562.
- Vogel C, Marcotte EM. 2012. Insights into the regulation of protein abundance from proteomic and transcriptomic analyses. *Nat Rev Genet* **13**: 227–232.
- Wang S, Yao X. 2012. Multiclass imbalance problems: analysis and potential solutions. *IEEE Trans Syst Man Cybern B Cybern* **42**: 1119–1130.
- Wang X, Lu Z, Gomez A, Hon GC, Yue Y, Han D, Fu Y, Parisien M, Dai Q, Jia G, et al. 2014.  $N^6$ -methyladenosine-dependent regulation of messenger RNA stability. *Nature* **505**: 117–120.
- Wang X, Zhao BS, Roundtree IA, Lu Z, Han D, Ma H, Weng X, Chen K, Shi H, He C. 2015.  $N^6$ -methyladenosine modulates messenger RNA translation efficiency. *Cell* **161**: 1388–1399.
- Zinshteyn B, Gilbert WV. 2013. Loss of a conserved tRNA anticodon modification perturbs cellular signaling. *PLoS Genet* **9**: e1003675.



# RNA

A PUBLICATION OF THE RNA SOCIETY

## A common class of transcripts with 5'-intron depletion, distinct early coding sequence features, and *N*<sup>1</sup>-methyladenosine modification

Can Cenik, Hon Nian Chua, Guramrit Singh, et al.

*RNA* 2017 23: 270-283 originally published online December 19, 2016  
Access the most recent version at doi:[10.1261/ma.059105.116](https://doi.org/10.1261/ma.059105.116)

---

### Supplemental Material

<http://rnajournal.cshlp.org/content/suppl/2016/12/19/rna.059105.116.DC1>

### References

This article cites 66 articles, 17 of which can be accessed free at:  
<http://rnajournal.cshlp.org/content/23/3/270.full.html#ref-list-1>

### Open Access

Freely available online through the *RNA* Open Access option.

### Creative Commons License

This article, published in *RNA*, is available under a Creative Commons License (Attribution 4.0 International), as described at <http://creativecommons.org/licenses/by/4.0/>.

### Email Alerting Service

Receive free email alerts when new articles cite this article - sign up in the box at the top right corner of the article or [click here](#).

---



Profiling plasma microRNAs in populations. Read expert advice.

**EXIQON**

---

To subscribe to *RNA* go to:  
<http://rnajournal.cshlp.org/subscriptions>

---