

This discussion paper is/has been under review for the journal Biogeosciences (BG).  
Please refer to the corresponding final paper in BG if available.

# Space-time dynamics of carbon stocks and environmental parameters related to carbon dioxide emissions in the Buor-Khaya Bay of the Laptev Sea

I. P. Semiletov<sup>1,2</sup>, N. E. Shakhova<sup>1,2</sup>, I. I. Pipko<sup>2</sup>, S. P. Pugach<sup>2</sup>, A. N. Charkin<sup>2</sup>,  
O. V. Dudarev<sup>2</sup>, D. A. Kosmach<sup>2</sup>, and S. Nishino<sup>3</sup>

<sup>1</sup>International Arctic Research Center, University of Alaska Fairbanks, Fairbanks, AK, USA

<sup>2</sup>V. I. Il'ichev Pacific Oceanological Institute, Far Eastern Branch of the Russian Academy of Science, Vladivostok, Russia

<sup>3</sup>Research Institute for Global Change, Japan Agency for Marine-Earth Science and Technology, Yokosuka, Japan

Received: 28 December 2012 – Accepted: 10 January 2013 – Published: 6 February 2013

Correspondence to: I. P. Semiletov (igorsm@iarc.uaf.edu)

Published by Copernicus Publications on behalf of the European Geosciences Union.

BGD

10, 2159–2204, 2013

Carbon dynamics in  
the Buor-Khaya Bay  
of the Laptev Sea

I. P. Semiletov et al.

Title Page

Abstract

Introduction

Conclusions

References

Tables

Figures

⏪

⏩

◀

▶

Back

Close

Full Screen / Esc

Printer-friendly Version

Interactive Discussion



## Abstract

This study aims to improve understanding of carbon cycling in the Buor-Khaya Bay (BKB) by studying the inter-annual, seasonal, and meso-scale variability of carbon stocks and related hydrological and biogeochemical parameters in the water, as well as factors controlling carbon dioxide (CO<sub>2</sub>) emission. Here we present data sets obtained on summer cruises and winter expeditions during 12 yr of investigation. Based on data analysis, we suggest that in the heterotrophic BKB area, coastal erosion and river discharge serve as predominant drivers of the organic carbon (OC) cycle, determining OC input and transformation, dynamics of nutrients, carbon stocks in the water column, and atmospheric emissions of CO<sub>2</sub>.

## 1 Introduction

Unlike other oceans, the Arctic Ocean is completely surrounded by permafrost, which is being degraded at an increasing rate under conditions of warming which are most pronounced in Siberia and Alaska (ACIA, 2004; AMAP: SWIPA, 2012). Permafrost underlies a substantial fraction of the Arctic; its thawing accelerates river discharge and carbon losses from soils (Savelieva et al., 2000; Freeman et al., 2001). Thaw and release of organic carbon (OC) from Arctic permafrost is postulated to be one of the most powerful mechanisms causing a net redistribution of carbon from land and ocean to the atmosphere (Gruber et al., 2004; IPCC, 2007; Canadell and Raupach, 2009). Because more than 30% of the planet's OC storage is in the Arctic region (Tarnocai et al., 2009), remobilization of this carbon and its involvement in the modern biogeochemical cycle was suggested to contribute to the carbon dioxide (CO<sub>2</sub>) and methane (CH<sub>4</sub>) atmospheric maxima observed above the Arctic (IPCC, 2007; Semiletov et al., 1996; Shakhova et al., 2010a,b; Zimov et al., 1993, 1997). A recent assessment of the carbon balance of Arctic tundra (and boreal forests) shows that Arctic tundra serves as a sink for atmospheric CO<sub>2</sub> (McGuire et al., 2012), while the East Siberian Arctic Shelf

**BGD**

10, 2159–2204, 2013

### Carbon dynamics in the Buor-Khaya Bay of the Laptev Sea

I. P. Semiletov et al.

Title Page

Abstract

Introduction

Conclusions

References

Tables

Figures



Back

Close

Full Screen / Esc

Printer-friendly Version

Interactive Discussion





distribution pattern of biogeochemical parameters and nutrients in the sea water. Analysis of biogeochemical parameters indicative of degradation showed that terrestrial OC was substantially older but less degraded in the surface sediments than in the surface water (Vonk et al., 2010). It has been shown that transformation of coastal erosion-induced OC starts well before it reaches the shelf water (Dudarev et al., 2003). The result of such transformation is the failure of > 50 % of mobilized OC to reach the shelf water due to its release to the atmosphere as CO<sub>2</sub> (Vonk et al., 2012).

The fate of particulate OC (POC) was poorly understood until recently, when it was shown that POC is biologically immobile to a very high degree. Its transformation in shelf water sooner rather than later results in the high partial pressure of CO<sub>2</sub> (*p*CO<sub>2</sub>) observed in the water (Semiletov, 1999a,b; Semiletov et al., 2007, 2011, 2012; Pipko et al., 2005, 2011; Anderson et al., 2009, 2011). After Vonk et al. (2010), it was hypothesized that the yedoma (Ice-Complex)-borne OC, largely associated with mineral-rich matter from coastal erosion, quickly settles to the bottom and exhibits great resistance to degradation. In contrast, young terrestrial OC from surface soil and recent vegetation was found to be more amorphous and humic-like, and lower in density; its buoyancy kept it in the surface water where it became more degraded and, thus, more bioavailable. Finally, it was concluded that yedoma-borne OC and OC from surface soils will contribute differently to the *p*CO<sub>2</sub> inventory of the Buor-Khaya Bay (BKB) waters (Karls-son et al., 2011). Dissolved OC (DOC) is believed to be brought mainly by rivers and to be relatively inert carbon stock, because its pool turnover time is significantly greater than the shelf water residence time (Dittmar and Kattner, 2003; Alling et al., 2010).

From this point of view, the BKB in the southeastern Laptev Sea is a key site where all these processes interact, determining specific dynamic patterns of hydrological, biogeochemical, and sedimentological parameters observed in the water and water-air interface year-round. Our current contribution aims to share with readers our improved understanding of both OC cycling in this unique area and the factors controlling CO<sub>2</sub> emission, understanding gained through 12 yr of studying the inter-annual, seasonal,

## BGD

10, 2159–2204, 2013

### Carbon dynamics in the Buor-Khaya Bay of the Laptev Sea

I. P. Semiletov et al.

Title Page

Abstract

Introduction

Conclusions

References

Tables

Figures



Back

Close

Full Screen / Esc

Printer-friendly Version

Interactive Discussion



and meso-scale variability of carbon stocks and related hydrological and biogeochemical parameters in the BKB water.

## 2 Data sets and methods

### 2.1 Study area

5 The BKB is located in the southeastern Laptev Sea and is one of the most important Laptev Sea gulfs. It is located between the Lena Delta to the west and Cape Buor-Khaya to the northeast (Fig. 1). The total area of the BKB is about 30 000 km<sup>2</sup>; water depth varies mostly from 10 to 20 m.

10 The BKB is the primary recipient of Lena River discharge; it receives about 80–90 % of the river's water and up to 85 % of its sediment discharge (Kassens et al., 1999; Dudarev et al., 2006). The BKB represents a hotspot for erosion input from coastal ice-complexes (called “yedoma” by local people) and was reported to be an important region for land-sea-atmosphere carbon exchanges (Semiletov, 1999a,b; Charkin et al., 2011; Karlsson et al., 2011; Semiletov et al., 2011). Erosion input stems from rapidly  
15 collapsing ice-complexes, which compose up to 30 % of the BKB coastline. Rates of coastal retreat as high as 2–3 myr<sup>-1</sup> were reported within the Lena River Delta (Grigoriev, 1993, 2008) while at some places, e.g. on Muostakh Island which is located roughly in the middle of the gulf, loss by erosion can average 11 myr<sup>-1</sup> (Grigoriev and Kunitsky, 2000, Fig. 2).

20 Hence, the BKB's sedimentary and terrestrial OC material input stems from two major sources: fluvial sediment discharge from the Lena River, and thermal collapse and erosion input from coastal and deltaic ice-complexes (Karlsson et al., 2011). Hydro-meteorological conditions, Lena River discharge, and rates of coastal erosion vary inter-annually, creating different backgrounds for the sedimentation processes and OC  
25 transport and distribution in the water column and in the surface sediments (Savelieva et al., 2000; Semiletov et al., 2000, 2011; Charkin et al., 2011).

**BGD**

10, 2159–2204, 2013

### Carbon dynamics in the Buor-Khaya Bay of the Laptev Sea

I. P. Semiletov et al.

Title Page

Abstract

Introduction

Conclusions

References

Tables

Figures



Back

Close

Full Screen / Esc

Printer-friendly Version

Interactive Discussion



## 2.2 Materials and methods

Hydrographic observations and sampling were carried out in the southeastern Laptev Sea during the fall seasons of 1999–2000, 2004–2006, 2008–2009, and 2011, and winter seasons of 2002 and 2007 (Table 1).

### 5 2.2.1 pH

Seawater samples were collected in Niskin bottles and then transferred into smaller bottles for chemical analysis. pH was determined potentiometrically and reported on the total hydrogen ion concentration scale (DOE, 1994). pH measurement precision was about  $\pm 0.004$  pH units. Direct comparison between potentiometric and spectrophotometric pH measurements (both on the “total” scale) was carried out in September 2008. Results of this comparison demonstrate good concurrence between the two methods (Pipko et al., 2011). In 2008 the CO<sub>2</sub> system was studied by measuring concentrations of dissolved inorganic carbon (C<sub>T</sub>), total alkalinity (A<sub>T</sub>), and pH, and computations using the different constituents showed good pH accuracy; C<sub>T</sub> and A<sub>T</sub> were calibrated versus certified reference materials (CRMs) supplied by Andrew Dickson, Scripps Institution of Oceanography.

### 2.2.2 A<sub>T</sub>

In August-September 2004 and 2005 and in winter 2002 and 2007 A<sub>T</sub> was determined as proposed in DOE (1994). The A<sub>T</sub> samples were poisoned with a mercuric chloride solution at the time of sampling. Samples were kept in the dark and were analyzed in the lab within one month using an indicator titration method in which 25 mL of seawater was titrated with 0.02 M hydrochloric acid (HCl) in an open cell according to Bruevich (1944). In 2000 the Carbon Dioxide in the Ocean working group of the North Pacific Marine Science Organization (PICES) performed an intercalibration of A<sub>T</sub> in seawater using CRMs. The results of the intercalibration showed that the alkalinity values obtained

**BGD**

10, 2159–2204, 2013

## Carbon dynamics in the Buor-Khaya Bay of the Laptev Sea

I. P. Semiletov et al.

Title Page

Abstract

Introduction

Conclusions

References

Tables

Figures



Back

Close

Full Screen / Esc

Printer-friendly Version

Interactive Discussion



by the Bruevich method are in agreement with the standard within  $\pm 1 \mu\text{mol kg}^{-1}$  when state-of-the-art analytical practice is applied (Pavlova et al., 2008).

In August–September 2008  $A_T$  was determined after pH from the same sample on board the *Yakob Smirnitskiy*, using an open-cell potentiometric titration method; 0.05 M HCl was used and the endpoint was determined by a Gran function (Haraldsson et al., 1997). The concentrations thus obtained were calibrated against CRMs. In September 2011  $A_T$  was determined onboard the *Academic Lavrentiev* according to Bruevich (1944), again using CRMs.

The precision of both titration methods was similar at about 0.1 %.

### 2.2.3 $C_T$

To measure  $C_T$  (fall seasons 1999, 2000) we used a TSVET-530 or LKHM-80MD gas chromatograph (GC), with a Poropac T (1.5 m, 80–120 mesh) and a flame-ionization detector (FID) run isothermally at 30 °C with hydrogen carrier gas; a stripping GC technique similar to that described in Weiss (1981) was used. The total  $\text{CO}_2$  ( $\text{TCO}_2$ ) calibrations were based on 0.73, 1.02, and 1.99 mM standard solutions of sodium carbonate ( $\text{Na}_2\text{CO}_3$ ) that were prepared gravimetrically in fresh distilled water. Conversion of  $\text{CO}_2$  to  $\text{CH}_4$  after the Poropac column was done in a nickel (Ni)-catalyst column (14 cm Chromaton, 80–100 mesh, coated with Ni) at 400 °C (Semiletov, 1993). The measurements are reproducible to within  $\pm 1$ –2 %.

### 2.2.4 Partial pressure of $\text{CO}_2$

The seawater  $p\text{CO}_2$  was computed from pH- $A_T$  using CO2SYS (Lewis and Wallace, 1998), except for cruises in 1999 and 2000 on which the pH- $C_T$  pair was used. The carbonic acid dissociation constants ( $K_1$  and  $K_2$ ) of Mehrbach et al. (1973) as refit by Dickson and Millero (1987) were used. The uncertainty in computed  $p\text{CO}_2$  was about  $\pm 10 \mu\text{atm}$ .

BGD

10, 2159–2204, 2013

## Carbon dynamics in the Buor-Khaya Bay of the Laptev Sea

I. P. Semiletov et al.

Title Page

Abstract

Introduction

Conclusions

References

Tables

Figures

◀

▶

◀

▶

Back

Close

Full Screen / Esc

Printer-friendly Version

Interactive Discussion





### 2.2.5 O<sub>2</sub>

Dissolved oxygen (O<sub>2</sub>) concentrations were obtained using a Winkler titration system, giving a precision of ~ 3 μmol kg<sup>-1</sup> for 1999–2005 data and ~ 1 μmol kg<sup>-1</sup> for 2008 and 2011 data. These values were then converted to percent saturation, following Weiss (1970).

### 2.2.6 Nutrients

Nitrates, nitrites, ammonium, silicates, and phosphates were determined by traditional oceanographic techniques prescribed by Ivanenkov and Bordovsky (1978). In September 2008 they were determined by a SmartChem analyzer (<http://www.unityscientific.com/products/chem-analyzers-and-sample-prep/smartchem-200.asp>). More detailed descriptions can be found elsewhere (Anderson et al., 2009, 2011). The samples were filtered before analysis and evaluated by a 6- to 8-point calibration curve at ~ 1 % precision.

### 2.2.7 Dissolved organic carbon

DOC contents of samples sealed in glass tubes were determined using a Shimadzu TOC-5000 high-temperature catalytic oxidation technique in University of Alaska, Fairbanks laboratories.

### 2.2.8 Hydrological parameters

During the 2004–2011 cruises a Seabird SBE19plus Profiler ([www.seabird.com](http://www.seabird.com)) was used for measurements of conductivity, temperature, photosynthetically active radiation (PAR) (by LI-193SA Spherical Quantum Sensor), turbidity (by OBS-3 Sensor), and fluorescence. A WetStar fluorimeter was used to assess the in situ colored dissolved OM (CDOM) concentration; this instrument has a single excitation ( $E_x = 370$  nm)/emission

## BGD

10, 2159–2204, 2013

### Carbon dynamics in the Buor-Khaya Bay of the Laptev Sea

I. P. Semiletov et al.

Title Page

Abstract

Introduction

Conclusions

References

Tables

Figures



Back

Close

Full Screen / Esc

Printer-friendly Version

Interactive Discussion





( $E_m = 460$  nm) wavelength pair. These measurements characterized the distribution of CDOM at 0.20 m vertical intervals at the oceanographic stations.

## 2.2.9 Analytical methods for sedimentological research

5 Size composition of fine-grained sediments and suspended particulate matter (SPM) was studied using a laser microanalyzer (Analysette 22, Fritsch GmbH). Sieve analysis was used to examine coarse sediments (Petelin, 1961). Bottom sediment sizing was then performed on the basis of a three-component classification system (Shepard, 1954) that defines sand (1–0.1 mm), silt (0.1–0.01 mm), and clay (< 0.01 mm).

10 The SPM content was obtained by filtration through membrane filters with pore diameter of 0.47  $\mu\text{m}$  followed by gravimetry. The POC composition was analyzed on samples filtered on pre-combusted (12 h, 450 °C) glass fiber filters (GF/F, 0.7  $\mu\text{m}$ , Whatman), 47 or 142 mm in diameter; after filtration samples were immediately transferred to pre-combusted aluminum envelopes, frozen, and kept at –18 °C until analysis.

15 Surface sediment samples were retrieved with a Van Veen grab sampler. The top-most surface sediment layer was transferred with stainless steel spatulas to pre-cleaned polyethylene containers before being stored at –18 °C until analysis.

20 Elementary OC and isotopic ( $\delta^{13}\text{C}$ ) composition of bottom sediment were determined by Carlo Erba elemental analyzers and a Finnigan MAT Delta Plus mass spectrometer, respectively, at the International Arctic Research Center, University of Alaska, Fairbanks (USA) and with similar instruments at Stockholm University (Sweden). Accuracy and reproducibility of the isotope results were  $\pm 0.1\%$ . Freeze-dried sediments from each station were weighed into pre-combusted silver capsules (5 × 9 mm, Säntis Analytical AG, Teufen, Switzerland), acidified in situ with 50  $\mu\text{L}$  1 M HCl for removal of carbonates, and dried overnight at 60 °C following a procedure adapted from Gustafsson et al. (1997). A similar procedure of *in situ* acidification and subsequent drying in  
25 silver capsules (5 × 12 mm) was followed to measure POC on sub-sampled GF/F (8–12 punches, 5 mm each). Acidified samples were analyzed in triplicate for OC content and  $\delta^{13}\text{C}$  composition using an isotope ratio mass spectrometer.

**BGD**

10, 2159–2204, 2013

### Carbon dynamics in the Buor-Khaya Bay of the Laptev Sea

I. P. Semiletov et al.

Title Page

Abstract

Introduction

Conclusions

References

Tables

Figures

◀

▶

◀

▶

Back

Close

Full Screen / Esc

Printer-friendly Version

Interactive Discussion



### 3 Results and discussion

#### 3.1 Specific features of hydrology, sedimentation, and permafrost dynamics in the BKB

Hydrological conditions in the BKB are determined by Lena River discharge changes, wind direction and speed, tidal fluctuations of the sea water level, and ice-related conditions. Climatic data show that riverine fresh waters propagate far to the east of the Lena River Delta (Semiletov et al., 2005). Alteration of the salinity and temperature of the surface and the bottom shelf water layers depends on the river discharge (Fig. 3) and prevailing wind conditions (Proshutinsky et al., 1997; Semiletov et al., 2000).

For example, in summer 2005 one of the lowest levels of river discharge (Fig. 3a, b) in the 1999–2008 period was observed ( $617 \text{ km}^3$ ) and winds with average velocities of  $11\text{--}12 \text{ ms}^{-1}$  prevailed. As a result, the water column in close proximity to the Lena Delta was mixed to the bottom, while most of the BKB was stratified (Fig. 4a, b). Salinity varied from 4.9 to 12.1 in the surface layer and from 8.9 to 31.5 in the bottom layer.

In summer 2005 observed temperatures varied from  $3.5$  to  $5.5^\circ\text{C}$  and from  $0.9$  to  $5^\circ\text{C}$ , respectively in the surface and bottom layers. In winter 2007, surface and bottom layer salinities varied from 0.24 to 15.4 and from 0.7 to 27.4, respectively; temperatures ranged from  $-0.48$  to  $2.3^\circ\text{C}$  in the surface layer and from  $-0.7$  to  $0.15^\circ\text{C}$  in the bottom layer (Fig. 4c, d). In contrast to summer 2005, in summer 2008 the Lena River discharge was very high ( $716 \text{ km}^3$ ) while winds during the period of observations were mostly low ( $1\text{--}2 \text{ ms}^{-1}$ ). This resulted in salinity variation from 0.1 to 8.4 in the surface layer and from 9.3 to 28.9 in the bottom layer (Fig. 4e, f). In summer 2008 temperature varied from  $5.2$  to  $16.5^\circ\text{C}$  in the surface water layer and from  $-1.37$  to  $7.5^\circ\text{C}$  in the bottom water (Fig. 5).

Note that the mean annual Lena River discharge (MAD) observed in the last decade varied between  $617 \text{ km}^3$  and  $716 \text{ km}^3$  (Fig. 3a) or  $\sim 17\text{--}36\%$  higher than MAD in the 1990s ( $\sim 525 \text{ km}^3$ ). It has been suggested that this reflects a significant increase in the eastward zonal air water vapor transport from the Northern Atlantic to the Lena River

BGD

10, 2159–2204, 2013

### Carbon dynamics in the Buor-Khaya Bay of the Laptev Sea

I. P. Semiletov et al.

Title Page

Abstract

Introduction

Conclusions

References

Tables

Figures



Back

Close

Full Screen / Esc

Printer-friendly Version

Interactive Discussion



watershed and increasing shelf-ward transport of permafrost thaw waters observed since the 1990s (Savelieva et al., 2000; Semiletov et al., 2000).

Two different BKB sedimentation regimes were revealed: Type 1 (erosion-accumulation) and Type 2 (accumulation) (Charkin et al., 2011). Under Type 1 accumulation conditions, terrigenous sources of SPM and POC stem predominantly from river discharge and thermal erosion of coastal ice-complexes and remobilized bottom sediments. A Type 1 sedimentation regime occurs more often and is believed to be the quantitatively most important mechanism for SPM and POC delivery to the BKB. According to our data, concentrations of SPM in the near-bottom water layer can reach 187 mgL<sup>-1</sup> (average 57.9 mgL<sup>-1</sup>) in the areas where river discharge dominates, and 594 mgL<sup>-1</sup> in areas located close to the intensively degrading coast. A maximum POC content in bottom waters exceeding 2.0 mgL<sup>-1</sup> was also observed in the latter areas (Fig. 6a). Note that the mean concentration of SPM observed in the BKB was one order of magnitude greater than the mean concentration of SPM (~20 mgL<sup>-1</sup>) observed along the Lena River stream in summer 2003 (Semiletov et al., 2011).

The Type 2 sedimentation regime usually occurs in winter but can be observed in summer under conditions of halted coastal erosion processes and low river flow or high river discharge associated with gentle winds. For example in 2008, under halted erosion, SPM averaged 2.9 mgL<sup>-1</sup> in the surface water and 4.8 mgL<sup>-1</sup> in the bottom water in winter and 11.2 mgL<sup>-1</sup> in the surface water and 13.4 mgL<sup>-1</sup> in the bottom water in summer. The POC content did not exceed 0.1 mgL<sup>-1</sup> in winter (Charkin et al., 2011) and 1.1 mgL<sup>-1</sup> in summer (Fig. 6).

The water column SPM and POC loadings vary by more than a factor of two between the two regimes. Under the Type 1 sedimentation regime, the highest POC levels were confined to a north-south band east of the delta, in the prodelta, and around Muostakh Island, likely reflecting remobilization of OC from bottom sediments and input of OC from coastal ice complex retreat. Under the Type 2 sedimentation conditions, the highest POC levels were measured in an eastward direction, reflecting river plume propagation from the delta channels to the BKB interior (Charkin et al., 2011).

## BGD

10, 2159–2204, 2013

### Carbon dynamics in the Buor-Khaya Bay of the Laptev Sea

I. P. Semiletov et al.

Title Page

Abstract

Introduction

Conclusions

References

Tables

Figures



Back

Close

Full Screen / Esc

Printer-friendly Version

Interactive Discussion



The  $\delta^{13}\text{C}$  of sea water POC in 2005 ranged from  $-26.4$  to  $-28.5\text{‰}$ , typical values for both river-borne and coastal erosion-borne POC (Semiletov, 1999a,b; Semiletov et al., 2012; Vonk et al., 2010, 2012), while in 2008,  $\delta^{13}\text{C}$  of POC varied from  $-24.3\text{‰}$  to  $-32.2\text{‰}$  (Fig. 7); this depletion reflects the strong terrestrial influence of the river plume extending eastward from the Lena Delta.

In winter (April) 2007, when river discharge was significantly smaller but propagated predominantly in the surface water layer,  $\delta^{13}\text{C}$  of surface water POC reflected the river contribution by exhibiting values as depleted as  $-29.9\text{‰}$ ; in the surface sediments the isotopic signature of old terrestrial carbon (from  $-24.9$  to  $-27.1\text{‰}$ ) prevailed, with a small area of much heavier carbon (from  $-22.2$  to  $-24.0\text{‰}$ ) that could be explained by a contribution from sea-ice algae (Charkin et al., 2011).

### 3.2 Biogeochemical signatures of OC degradation in sea water (dynamics of carbon stocks, nutrients, and related environmental parameters)

Microbial degradation of OM that has been either produced photosynthetically in the euphotic zone or delivered by river and coastal erosion input occurs mostly at the pycnocline and the water-sediment interface, which results in decreasing  $\text{O}_2$  concentrations, increasing nutrients concentrations (primarily phosphate,  $\text{PO}_4^{3-}$ , and nitrate,  $\text{NO}_3^-$ ), and increasing  $p\text{CO}_2$  in the bottom water. In the ESAS, the total amount of OC is the sum of primarily produced OC, OC delivered to the shelf water by river runoff, and OC resulting from coastal and bottom erosion (Stein and Macdonald, 2004; Semiletov et al., 2011, 2012). This pool consists of two major carbon stocks: POC and DOC. POC represents an earlier phase of OM transformation associated with poorly-defined compositional changes such as aggregation/disaggregation of particles, incorporation of older and more degraded material, and recombination of organic compounds (Cooper et al., 2005). In the BKB, major POC sources include soil and yedoma-borne terrestrial OC and OC mobilized to the water column by coastal and bottom erosion (Vonk et al., 2010, 2012; Karlsson et al., 2011).

BGD

10, 2159–2204, 2013

## Carbon dynamics in the Buor-Khaya Bay of the Laptev Sea

I. P. Semiletov et al.

Title Page

Abstract

Introduction

Conclusions

References

Tables

Figures

◀

▶

◀

▶

Back

Close

Full Screen / Esc

Printer-friendly Version

Interactive Discussion





$p\text{CO}_2$  along the transect ranged from a few hundreds to 4000  $\mu\text{atm}$ , which implies supersaturation by up to 10 times relative to equilibrium with atmosphere. Higher  $p\text{CO}_2$  values were observed where salinity and POC levels were higher and CDOM was lower, suggesting that the predominant source of  $\text{CO}_2$  in the water column is not river runoff (Fig. 8b, e). We also found that when POC concentrations in waters of different salinities were comparable, higher  $p\text{CO}_2$  occurred where salinity was higher (Fig. 8c).  $\text{NO}_3^-$  concentrations in the water column along the transect varied from negligible values up to  $8\text{ mgL}^{-1}$ . Higher  $\text{NO}_3^-$  concentrations were observed in saltier water and were associated with lower CDOM concentrations, which suggests that coastal erosion, rather than river runoff, is the  $\text{NO}_3^-$  source (Fig. 8f). In 2011, relationships between studied parameters were similar to those observed in 2005 except for levels of  $p\text{CO}_2$  detected in the water column (Fig. 9).

In summer 2011, sea water  $p\text{CO}_2$  varied from near saturated relative to the atmosphere ( $\sim 400\ \mu\text{atm}$ ) to 2.5 times oversaturated ( $900\ \mu\text{atm}$ ), much lower than in summer 2005, when sea water oversaturation reached 10 times relative to atmosphere. Note that the 2005 Lena River discharge was the lowest in the last ten years, while in 2011 it was about average volume. Because concentrations of nutrients ( $\text{NO}_3^-$ , Fig. 9a, b) in 2005 and in 2011 were comparable, we suggest that rates of OM degradation were also comparable. That implies that the observed difference in  $p\text{CO}_2$  between the two years was caused by strong 2011 winds ( $10\text{--}20\ \text{ms}^{-1}$ ) which induced higher levels of coastal erosion and wind-driven surface sediment resuspension (Heim et al., 2013) that contributed to the OM supply to the shelf water. At the same time more frequent and longer-lasting storms caused intense water mixing down to the very bottom and consequent release of  $\text{CO}_2$  to the atmosphere, allowing significant unloading of the water column  $\text{CO}_2$  (Fig. 10). In the winter, when the Lena River discharge was up to 10 times less than in summer (Fig. 3b), values of  $p\text{CO}_2$  in the water column remained comparable with those observed in summer 2005 (up to 4000  $\mu\text{atm}$ , Fig. 11a, d).

As is clearly seen in Fig. 11, in winter the highest  $p\text{CO}_2$  values were associated with bottom water and could be attributed to the microbial degradation of OM that occurs

**BGD**

10, 2159–2204, 2013

**Carbon dynamics in the Buor-Khaya Bay of the Laptev Sea**

I. P. Semiletov et al.

Title Page

Abstract

Introduction

Conclusions

References

Tables

Figures

|◀

▶|

◀

▶

Back

Close

Full Screen / Esc

Printer-friendly Version

Interactive Discussion





at the water-sediment interface. Because the water column is better stratified in winter, vertical distribution of  $p\text{CO}_2$  in the water column reflected the stratification pattern. Because the BKB in winter is covered with sea ice,  $\text{CO}_2$  release to the atmosphere is restricted, which allows accumulation of  $p\text{CO}_2$  up to  $5000\ \mu\text{atm}$  (Semiletov et al., 2004), higher than  $p\text{CO}_2$  values measured in winter ( $1267\text{--}1579\ \mu\text{atm}$ ) in the Lena Delta channels (Semiletov et al., 2011).

Degradation of the OC resulting in increasing  $p\text{CO}_2$  is manifested by decreasing concentrations of  $\text{O}_2$ . As is seen in Fig. 12a, the most pronounced increase in  $p\text{CO}_2$  corresponded with a decrease in concentrations of  $\text{O}_2$  in the bottom water, where the highest  $p\text{CO}_2$  and the lowest levels of  $\text{O}_2$  were observed. Higher  $p\text{CO}_2$  in the bottom water resulted in lower pH or an acidified water column (Fig. 12b). The strong negative correlation observed between salinity and pH ( $R = -0.82$ ,  $n = 43$  in 2005) implies that coastal erosion/oxidation of eroded OM rather than river discharge is responsible for acidifying shelf water (Table 2). Intensive water mixing weakened the correlation to  $R = -0.43$ ,  $n = 74$  in 2011 as was described above.

We observed strong negative correlation between  $p\text{CO}_2$  and  $\text{O}_2$  ( $R = -0.97$ ,  $n = 43$  in 2005 and  $R = -0.92$ ,  $n = 74$  in 2011), between  $\text{O}_2$  and  $\text{NO}_3^-$  ( $R = -0.87$ ,  $n = 43$  in 2005 and  $R = -0.84$ ,  $n = 74$  in 2011), and between  $\text{O}_2$  and  $\text{PO}_4^{3-}$  ( $R = -0.7$ ,  $n = 43$  in 2005 and  $R = -0.84$ ,  $n = 74$  in 2011). We found a strong positive correlation between  $p\text{CO}_2$  and  $\text{NO}_3^-$  ( $R = 0.75$ ,  $n = 43$  in 2005 and  $R = 0.91$ ,  $n = 74$  in 2011), and between  $p\text{CO}_2$  and  $\text{PO}_4^{3-}$  ( $R = 0.53$ ,  $n = 43$  in 2005 and  $R = 0.83$ ,  $n = 74$  in 2011) (Table 2 and Table 3) suggesting that high  $p\text{CO}_2$  is caused by in situ microbial OM (POC) decomposition in the water column.

Our data show that concentrations of nutrients ( $\text{NO}_3^-$  in the range of 5 to  $8\ \mu\text{M}$  and  $\text{PO}_4^{3-}$  in the range of 0.45 to  $1.45\ \mu\text{M}$ ) observed in the water column near Buor-Khaya Cape, known to be a landform subject to very high rates of coastal erosion, were significantly greater than values measured in the Lena River. Specifically, in the Lena River,  $\text{NO}_3^-$  concentrations ranged from 0.01 to  $1.4\ \mu\text{M}$ , and  $\text{PO}_4^{3-}$  concentrations ranged from

## BGD

10, 2159–2204, 2013

### Carbon dynamics in the Buor-Khaya Bay of the Laptev Sea

I. P. Semiletov et al.

[Title Page](#)[Abstract](#)[Introduction](#)[Conclusions](#)[References](#)[Tables](#)[Figures](#)[|◀](#)[▶|](#)[◀](#)[▶](#)[Back](#)[Close](#)[Full Screen / Esc](#)[Printer-friendly Version](#)[Interactive Discussion](#)





Sorokin and Sorokin, 1996). Thus, the proposed NPP increase based on interpretation of satellite data must be validated with observational data (Heim et al., 2013). Meanwhile, the observed increase in the Lena River discharge of up to 37 % since the 1990 s suggests that increased levels of annual primary production could be explained by an increasing load of humic acids delivered to shelf water; in this water the color from CDOM mimics the color from Chl *a* as seen from space.

### 3.3 BKB and its coastal zone as a source of CO<sub>2</sub> emissions to the atmosphere

The multi-year investigation of BKB  $p\text{CO}_2$  shows that strong oversaturation of the surface water predominantly occurred in the eastern part of the study area (Fig. 14), while sometimes a slight oversaturation ( $\sim 400 \mu\text{atm}$ ) was observed in the small area adjacent to the Lena River Delta, perhaps as a result of lower  $p\text{CO}_2$  values in the river water followed by the enhanced uptake of CO<sub>2</sub> by photosynthesis (Sorokin and Sorokin, 1996).

The result of surface water oversaturation with CO<sub>2</sub> is that surface water serves as a source of CO<sub>2</sub> to the atmosphere. As is shown in Fig. 15, the BKB surface is a source of CO<sub>2</sub> to the atmosphere with rates varying from near zero to  $56 \text{ mMm}^{-2} \text{ day}^{-1}$  in 2005, and from near zero to  $95 \text{ mMm}^{-2} \text{ day}^{-1}$  in 1999. In winter  $p\text{CO}_2$  remained high, exceeding the summer values, due to restricted ventilation of the ice-covered water column (Semiletov et al., 2004, 2007). The bottom water is oversaturated with CO<sub>2</sub> year-round and the potential exists for the CO<sub>2</sub> to be released into the atmosphere through open flaw polynyas because of deep convection (Shakhova et al., 2010a).

It was reported that the area surrounding Muostakh Island experiences coastal erosion of up to 15–20 m during only a few summertime weeks, much higher than the average coastal erosion rates in the area (Grigoriev and Kunitsky, 2000). A significant fraction of old carbon activated by erosion of coastal permafrost is released directly to the atmosphere as CO<sub>2</sub> as a result of sub-aerial degradation (Vonk et al., 2012), in contrast to the prior assumption that all thawed and erosion-mobilized OC is flushed into

## BGD

10, 2159–2204, 2013

### Carbon dynamics in the Buor-Khaya Bay of the Laptev Sea

I. P. Semiletov et al.

Title Page

Abstract

Introduction

Conclusions

References

Tables

Figures



Back

Close

Full Screen / Esc

Printer-friendly Version

Interactive Discussion



the sea (Stein and Macdonald, 2004). Figure 16 presents observational data on CO<sub>2</sub> emissions from the thawing ice-complex measured by the same technique in September 2006 and September 2009 along similar transects across the Northern Cape of Muostakh Island.

5 As seen in Fig. 16, the CO<sub>2</sub> fluxes measured in late September 2009 were in the same range (6–319 mMm<sup>-2</sup> day<sup>-1</sup>) as fluxes measured in early September 2006 (3–439 mMm<sup>-2</sup> day<sup>-1</sup>, Vonk et al., 2012). These fluxes were a few-fold greater than those observed from the tundra (8.6–9.5 mMm<sup>-2</sup> day<sup>-1</sup>) on the neighboring Primorsky coastal plain. The CO<sub>2</sub> fluxes measured at near-shore sites were much  
10 lower than those observed from the beach but were in the range of CO<sub>2</sub> fluxes (1–50 mMm<sup>-2</sup> day<sup>-1</sup>) reported for other shallow areas of the ESAS impacted by export of eroded carbon (Pipko et al., 2011; Semiletov et al., 2011, 2012). In terms of inter-annual variability, CO<sub>2</sub> fluxes observed at sea sites in September 2009 (34–41 mMm<sup>-2</sup> day<sup>-1</sup>) were slightly higher than in September 2006 (26–34 mMm<sup>-2</sup> day<sup>-1</sup>).

#### 15 4 Conclusions

Based on our multi-year data (1999–2011), we suggest that in the BKB, heterotrophic processes associated with river discharge and coastal erosion drive OC input and transformation, dynamics of nutrients, and carbon stocks in the water column. Specifically:

- 20 – Input of terrestrially-borne OC varies seasonally and inter-annually and is largely determined by rates of coastal erosion and river discharge. The latter has increased during the last two decades by up to 36 %.
- Hydrological conditions in the BKB reflect ongoing changes in river runoff, which have resulted in fresher and warmer water observed in summer and winter.

**BGD**

10, 2159–2204, 2013

### Carbon dynamics in the Buor-Khaya Bay of the Laptev Sea

I. P. Semiletov et al.

Title Page

Abstract

Introduction

Conclusions

References

Tables

Figures

◀

▶

◀

▶

Back

Close

Full Screen / Esc

Printer-friendly Version

Interactive Discussion



- The sedimentation regime in the BKB changes from erosion-accumulation (Type 1) to accumulation (Type 2). Loadings of the water column with particulate material vary by more than a factor of two between the two regimes.
- Higher levels of  $p\text{CO}_2$ , higher concentrations of nutrients, and lower levels of oxygen saturation were observed in the bottom water near the eroded coasts; this implies that coastal erosion and subsequent oxidation of eroded OM rather than the Lena River serves as the predominant source of nutrients to the BKB.
- $\text{CO}_2$  fluxes from the BKB and ESAS sea water ( $1\text{--}50 \text{ mMm}^{-2} \text{ day}^{-1}$ ) into the atmosphere are determined by specific features of hydrology and wind conditions, which change seasonally and inter-annually; this implies that the sea surface is a more significant source of  $\text{CO}_2$  to the atmosphere than the tundra (see below).
- Atmospheric  $\text{CO}_2$  emissions ( $3\text{--}439 \text{ mMm}^{-2} \text{ day}^{-1}$ ) measured from a thawed ice-complex in the BKB in two years (2006 and 2009) suggest that the coastal area serves as a more significant source of  $\text{CO}_2$  to the atmosphere than the tundra ( $8.6\text{--}9.5 \text{ mMm}^{-2} \text{ day}^{-1}$ ) on the neighboring Primorsky coastal plain.

The BKB area can be employed as an integrator of ongoing changes in the surrounding environment. These changes create a terrestrial or exogenous signal generated by increasing coastal and bottom erosion (increasing export of terrestrial POC to the Arctic Ocean), increasing river runoff (increasing export of terrestrial DOC/humic acids/CDOM to the Arctic Ocean), and involvement of terrestrial carbon in the modern biogeochemical cycle. Thus, we suggest that under ongoing changes, more nutrients, products of eroded OC transformation and river transport, will be delivered to the Arctic Ocean with its shrinking ice cover, potentially increasing primary production outside of the shallow ESAS. At the same time, because the ESAS is characterized by very low transparency which limits thickness of the euphotic layer, excessive  $p\text{CO}_2$  will not be utilized by photosynthesis, but will rather be emitted to the atmosphere at increasing rates affecting regional  $\text{CO}_2$  balance.

## BGD

10, 2159–2204, 2013

### Carbon dynamics in the Buor-Khaya Bay of the Laptev Sea

I. P. Semiletov et al.

Title Page

Abstract

Introduction

Conclusions

References

Tables

Figures



Back

Close

Full Screen / Esc

Printer-friendly Version

Interactive Discussion



*Acknowledgements.* This work was supported by the International Arctic Research Center (IARC) of the University of Alaska Fairbanks; the Far Eastern Branch of the Russian Academy of Sciences (FEBRAS); the Cooperative Institute for Arctic Research, through NOAA Cooperative Agreement NA17RJ1224; the US National Science Foundation (Nos. OPP-0327664, OPP-0230455, ARC-1023281, ARC-0909546); the NOAA OAR Climate Program Office (NA08OAR4600758); Japan Agency for Marine-Earth Science and Technology (JAM-STE), and the Russian Foundation for Basic Research (Nos. 07-05-64819, 08-05-00184, 08-05-00191, 10-05-00996, 11-05-00781, 11-05-12021, 11-05-12027, 11-05-12028, 11-05-12032). We thank Candace O'Connor for English editing.

## 10 References

- ACIA: Impacts of a Warming Arctic: Arctic Climate Impact Assessment, Cambridge University Press, Cambridge, 139 pp., 2004.
- Alling, V., Sánchez-García, L., Porcelli, D., Pugach, S., Vonk, J., van Dongen, B., Mörrth, C. M., Anderson, L. G., Sokolov, A., Andersson, P., Humborg, C., Semiletov, I., and Gustafsson, Ö.: Nonconservative behavior of dissolved organic carbon across the Laptev and East Siberian seas, *Global Biogeochem. Cy.*, 24, GB4033, doi:10.1029/2010GB003834, 2010.
- AMAP: Snow, Water, Ice and Permafrost in the Arctic (SWIPA): Climate Change and the Cryosphere, Arctic Monitoring and Assessment Programme (AMAP), Oslo, Norway, 538 pp., 2012.
- 20 Amon, R. M. W. and Benner, R.: Bacterial utilization of different size classes of dissolved organic matter, *Limnol. Oceanogr.*, 41, 41–51, 1996.
- Anderson, L. G., Jutterström, S., Hjalmarsson, S., Wahlström, I., and Semiletov, I.: Out-gassing of CO<sub>2</sub> from Siberian Shelf seas by terrestrial organic matter decomposition, *Geophys. Res. Lett.*, 36, L20601, doi:10.1029/2009GL040046, 2009.
- 25 Anderson, L. G., Björk, G., Jutterström, S., Pipko, I., Shakhova, N., Semiletov, I., and Wåhlström, I.: East Siberian Sea, an Arctic region of very high biogeochemical activity, *Biogeosciences*, 8, 1745–1754, doi:10.5194/bg-8-1745-2011, 2011.
- Arrigo, K. R. and van Dijken, G.: Secular trends in Arctic Ocean net primary production, *J. Geophys. Res.*, 116, C09011, doi:10.1029/2011JC007151, 2011.

## BGD

10, 2159–2204, 2013

### Carbon dynamics in the Buor-Khaya Bay of the Laptev Sea

I. P. Semiletov et al.

Title Page

Abstract

Introduction

Conclusions

References

Tables

Figures

◀

▶

◀

▶

Back

Close

Full Screen / Esc

Printer-friendly Version

Interactive Discussion



- Belzil, C. C., Roesler, S., Christensen, J. P., Shakhova, N., and Semiletov, I.: Fluorescence measured using the WETStar DOM fluorometer as a proxy for dissolved matter absorption, *Estuar. Coast. Shelf Sci.*, 67, 41–49, 2006.
- 5 Boucsein, B., Fahl, K., and Stein, R.: Variability of river discharge and Atlantic-water inflow at the Laptev Sea continental margin during the past 15,000 yr: implications from maceral and biomarker records, *Int. J. Earth Sci.*, 89, 578–591, 2000.
- Bruevich, S. V.: Instruction for Chemical Investigation of Seawater, Glavsevmorput, Moscow, 83 pp., 1944 (in Russian).
- 10 Canadell, J. G. and Raupach, M. R.: Land carbon cycle feedbacks, in: Arctic Climate Feedbacks: Global Implications, edited by: Sommerkorn, M. and Hassol, S. J., WWF International Arctic Programme, Oslo, 70–80, 2009.
- Charkin, A. N., Dudarev, O. V., Semiletov, I. P., Kruhmalev, A. V., Vonk, J. E., Sánchez-García, L., Karlsson, E., and Gustafsson, Ö.: Seasonal and interannual variability of sedimentation and organic matter distribution in the Buor-Khaya Gulf: the primary recipient of input from Lena River and coastal erosion in the southeast Laptev Sea, *Biogeosciences*, 8, 15 2581–2594, doi:10.5194/bg-8-2581-2011, 2011.
- Dickson, A. G. and Millero, F. J.: A comparison of the equilibrium constants for the dissociation of carbonic acid in seawater media, *Deep-Sea Res.*, 34, 1733–1743, 1987.
- 20 Dittmar, T. and Kattner, G.: The biogeochemistry of the river and shelf ecosystem of the Arctic Ocean: a review, *Mar. Chem.*, 83, 103–120, 2003.
- DOE: Handbook of Methods for the Analysis of the Various Parameters of the Carbon Dioxide System in Sea Water, Version 2, edited by: Dickson, A. G. and Goyet, C., 1994.
- Dudarev, O., Semiletov, I., Botsul, A., and Charkin, A.: Modern sedimentation in the coastal cryolithozone of the Dmitry Laptev Strait/East-Siberian Sea, *Pacific Geology*, 22, 51–60, 2003 (translated into English).
- 25 Dudarev, O. V., Semiletov, I. P., and Charkin, A. N.: Particulate material composition in the Lena River-Laptev Sea system: scales of heterogeneities, *Dokl. Earth Sci.*, 411A, 1445–1451, 2006 (translated in English).
- Freeman, C., Evans, C. D., Monteith, D. T., Reynolds, B., and Fenner, N.: Export of organic carbon from peat soils, *Nature*, 412, 785, doi:10.1038/35090628, 2001.
- 30 Gordeev, V. V., Martin, J. M., Sidorov, I. S., and Sidorova, M. V.: A reassessment of the Eurasian river input of water, sediment, major elements, and nutrients to the Arctic Ocean, *Am. J. Sci.*, 296, 664–691, 1996.

**BGD**

10, 2159–2204, 2013

**Carbon dynamics in the Buor-Khaya Bay of the Laptev Sea**

I. P. Semiletov et al.

Title Page

Abstract

Introduction

Conclusions

References

Tables

Figures

I◀

▶I

◀

▶

Back

Close

Full Screen / Esc

Printer-friendly Version

Interactive Discussion



- Grigoriev, M. N.: Criomorphogenesis of the Mouth Area of the Lena River, Institute of Permafrost Study of the Siberian Branch of the Russian Academy of Science, Yakutsk, 1–176, 1993 (in Russian).
- Grigoriev, M. N.: Cryomorphogenesis and Lithodynamics of the Coastal-Shelf Zone of the Seas of Eastern Siberia, Doctoral thesis, Melnikov Permafrost Inst., Yakutsk, 2008 (in Russian).
- Grigoriev, M. N. and Kunitsky, V. V.: Destruction of the sea coastal ice-complex in Yakutia, in: Hydrometeorological and Biogeochemical Research in the Arctic, Proc. Arctic Regional Center, 2, edited by: Semiletov, I. P., Dal'nauka Press, Vladivostok, 109–116, 2000 (in Russian).
- Grigoriev, M. N., Razumov, S. O., Kunitzkiy, V. V., and Spektor, V. B.: Dynamics of the Russian East Arctic Sea coast: major factors, regularities and tendencies, Earth's Cryosphere, X(4), 74–94, 2006 (in Russian).
- Gruber, N., Friedlingstein, P., Field, C. B., Valentini, R., Heimann, M., Richey, C. B., Romero-Lankao, P., Schulze, D., and Chen, C.-T. A.: The vulnerability of the carbon cycle in the 21st century: an assessment of carbon-climate-human interactions, in: The Global Carbon Cycle: Integrating Humans, Climate, and the Natural World, edited by: Field, C. B. and Raupach, M. R., Island Press, Washington DC, 45–76, 2004.
- Guo, L., Semiletov, I., Gustafsson, Ö., Ingri, J., Andersson, P., Dudarev, O., and White, D.: Characterization of Siberian Arctic coastal sediments: implications for terrestrial organic carbon export, Global Biogeochem. Cy., 18, GB1036, doi:10.1029/2003GB002087, 2004.
- Gustafsson, Ö., Haghseta, F., Chan, C., MacFarlane, J., and Gschwend, P. M.: Quantification of the dilute sedimentary soot phase: implications for PAH speciation and bioavailability, Environ. Sci. Technol., 31, 203–209, 1997.
- Gustafsson, Ö., van Dongen, B. E., Vonk, J. E., Dudarev, O. V., and Semiletov, I. P.: Widespread release of old carbon across the Siberian Arctic echoed by its large rivers, Biogeosciences, 8, 1737–1743, doi:10.5194/bg-8-1737-2011, 2011.
- Haraldsson, C., Anderson, L. G., Hasselov, M., Hulth, S., and Olsson, K.: Rapid, high-precision potentiometric titration of alkalinity in ocean and sediment pore waters, Deep-Sea Res. Pt. I, 44, 2031–2044, 1997.
- Heim, B., Abramova, E., Doerffer, R., Guenther, F., Holemann, J., Kraberg, A., Lantuit, H., Loginova, A., Martynov, F., Overduin, P. P., and Wegner, C.: Ocean color remote sensing in the Southern Laptev Sea: evaluation and applications, Biogeosciences Discuss., accepted, 2013.

**BGD**

10, 2159–2204, 2013

**Carbon dynamics in the Buor-Khaya Bay of the Laptev Sea**

I. P. Semiletov et al.

Title Page

Abstract

Introduction

Conclusions

References

Tables

Figures

I◀

▶I

◀

▶

Back

Close

Full Screen / Esc

Printer-friendly Version

Interactive Discussion





- Holemann, J., Kirillov, S., Klagge, T., Novikhin, A., Kassens, H., and Timokhov, L.: Near-bottom water warming in the Laptev Sea in response to atmospheric sea-ice conditions in 2007, *Polar Res.*, 30, 6425–6440, 2011.
- 5 IPCC: Climate Change 2007: The Physical Science Basis. Contribution of Working Group I to the Fourth Assessment Report of the Intergovernmental Panel on Climate Change, edited by: Solomon, S., Qin, D., Manning, M., Chen, Z., Marquis, M., Avery, K. B., Tignor, M., and Miller, H. L., Cambridge University Press, Cambridge, UK and NY, NY, USA, 996 pp., 2007.
- Ivanenkov, V. N. and Bordovsky, O. K.: Methods of Hydrochemical Investigation of Seawater, Nauka, Moscow, 270 pp., 1978 (in Russian).
- 10 Jørgensen, N. O. G., Tranvik, L., Edling, H., Granéli, W., and Lindell, M.: Effects of sunlight on occurrence and bacterial turnover of specific carbon and nitrogen compounds in lake water, *FEMS Microbiol. Ecol.*, 25, 217–227, 1998.
- Karlsson, E. S., Charkin, A., Dudarev, O., Semiletov, I., Vonk, J. E., Sánchez-García, L., Andersson, A., and Gustafsson, Ö.: Carbon isotopes and lipid biomarker investigation of sources, transport and degradation of terrestrial organic matter in the Buor-Khaya Bay, SE Laptev Sea, *Biogeosciences*, 8, 1865–1879, doi:10.5194/bg-8-1865-2011, 2011.
- 15 Kassens, H., Bauch, H. A., Dmitrenko, J. A., Eicken, H., Hubberten, H. W., Melles, M., Thiede, J., and Timokhov, L. A.: Land-Ocean Systems in the Siberian Arctic: Dynamics and History, Springer, Berlin, Heidelberg, New York, 711 pp., 1999.
- 20 Lara, R. J., Rachold, V., Kattner, G., Hubberten, H.-W., Guggenbergen, G., Skoog, A., and Thomas, D. N.: Dissolved organic matter and nutrients in the Lena River, Siberian Arctic: characteristics and distribution, *Mar. Chem.*, 59, 301–309, 1998.
- Lewis, E. and Wallace, D. W. R.: Program developed for CO<sub>2</sub> system calculations, ORNL/CDIAC-105, Carbon Dioxide Information Analysis Center, Oak Ridge National Laboratory, US Department of Energy, Oak Ridge, Tennessee, 1998.
- 25 Macdonald, R. W., Anderson, L. G., Christensen, J. P., Miller, L. A., Semiletov, I. P., and Stein, R.: The Arctic Ocean: budgets and fluxes, carbon and nutrient fluxes, in: *Continental Margins: A Global Synthesis*, edited by: Liu, K.-K., Atkinson, L., Quinones, R., and Talaue-McManus, L., Springer, Berlin, 291–303, 2008.
- 30 Mantoura, R. F. C. and Woodward, E. M. S.: Conservative behavior of riverine dissolved organic-carbon in the Severn Estuary – chemical and geochemical implications, *Geochim. Cosmochim. Acta*, 47, 1293–1309, 1983.

**BGD**

10, 2159–2204, 2013

**Carbon dynamics in the Buor-Khaya Bay of the Laptev Sea**

I. P. Semiletov et al.

Title Page

Abstract

Introduction

Conclusions

References

Tables

Figures

|◀

▶|

◀

▶

Back

Close

Full Screen / Esc

Printer-friendly Version

Interactive Discussion







- Semiletov, I. P., Pipko, I. I., Shakhova, N. E., Dudarev, O. V., Pugach, S. P., Charkin, A. N., McRoy, C. P., Kosmach, D., and Gustafsson, Ö.: Carbon transport by the Lena River from its headwaters to the Arctic Ocean, with emphasis on fluvial input of terrestrial particulate organic carbon vs. carbon transport by coastal erosion, *Biogeosciences*, 8, 2407–2426, doi:10.5194/bg-8-2407-2011, 2011.
- 5 Semiletov, I. P., Shakhova, N. E., Sergienko, V. I., Pipko, I. I., and Dudarev, O. V.: On carbon transport and fate in the East Siberian Arctic land-shelf-atmosphere system, *Environ. Res. Lett.*, 7, 015201, doi:10.1088/1748-9326/7/1/015201, 2012.
- 10 Shakhova, N. E. and Semiletov, I. P.: Characteristic features of carbon cycle in the shallow shelf of the eastern sector of Russian Arctic, in: *Environmental and Climate Changes and Catastrophes*, Vol. 4, edited by: Laverov, N. P., Institute of Physicochemical and Biological Problems of Soil Science, Russian Academy of Sciences, Moscow, 167–181, 2008.
- Shakhova, N., Semiletov, I., Leifer, I., Rekant, P., Salyuk, A., and Kosmach, D.: Geochemical and geophysical evidence of methane release from the inner East Siberian Shelf, *J. Geophys. Res.*, 115, C08007, doi:10.1029/2009JC005602, 2010a.
- 15 Shakhova, N., Semiletov, I., Salyuk, A., Yusupov, V., Kosmach, D., and Gustafsson, Ö.: Extensive methane venting to the atmosphere from sediments of the East Siberian Arctic Shelf, *Science*, 327, 1246–1250, 2010b.
- Shepard, F. P.: Nomenclature based on sand-silt-clay ratios, *J. Sediment. Petrol.*, 24, 151–158, 1954.
- 20 Soloviev, V. A., Ginzburg, G. D., Telepnev, E. B., and Mihalyuk, Yu. N.: *Cryothermia and natural gas hydrates within the Arctic Ocean*, Sevmorgeologiya, Leningrad, 150 pp., 1987 (in Russian).
- Sondergaard, M. and Middelboe, M.: A cross-system analysis of labile dissolved organic carbon, *Mar. Ecol.-Prog. Ser.*, 118, 283–294, 1995.
- 25 Sorokin, Yu. A. and Sorokin, P. Yu.: Plankton and primary production in the Lena River estuary and in the South-eastern Laptev Sea, *Estuar. Coast. Shelf Sci.*, 43, 399–418, 1996.
- Stein, R. and Macdonald, R. W.: *The Organic Carbon Cycle in the Arctic Ocean*, Springer-Verlag, Berlin, 417 pp., 2004.
- 30 Tarnocai, C., Canadell, J. G., Schuur, E. A. G., Kuhry, P., Mazhitova, G., and Zimov, S.: Soil organic carbon pools in the northern circumpolar permafrost region, *Global Biogeochem. Cy.*, 23, GB2023, doi:10.1029/2008GB003327, 2009.

**BGD**

10, 2159–2204, 2013

**Carbon dynamics in the Buor-Khaya Bay of the Laptev Sea**

I. P. Semiletov et al.

Title Page

Abstract

Introduction

Conclusions

References

Tables

Figures

I◀

▶I

◀

▶

Back

Close

Full Screen / Esc

Printer-friendly Version

Interactive Discussion



- Vonk, J. E., Sánchez-García, L., Semiletov, I., Dudarev, O., Eglinton, T., Andersson, A., and Gustafsson, Ö.: Molecular and radiocarbon constraints on sources and degradation of terrestrial organic carbon along the Kolyma paleoriver transect, East Siberian Sea, *Biogeochemistry*, 7, 3153–3166, doi:10.5194/bg-7-3153-2010, 2010.
- 5 Vonk, J. E., Sánchez-García, L., van Dongen, B. E., Alling, V., Kosmach, D., Charkin, A., Semiletov, I. P., Dudarev, O. V., Shakhova, N., Roos, P., Eglinton, T. I., Andersson, A. and Gustafsson, Ö.: Activation of old carbon by erosion of coastal and subsea permafrost in Arctic Siberia, *Nature*, 489, 137–140, 2012.
- 10 Walsh, J. J., McRoy, C. P., Coachman, L. K., Goering, J. J., Nihoul, J. J., Whittedge, T. E., Blackburn, T. H., Parker, P. L., Wirick, C. D., Shuert, P. G., Grebmeier, J. M., Springer, A. M., Tripp, R. D., Hansell, D. A., Djenidi, S., Deleersnijder, E., Henriksen, K., Lund, B. A., Andersen, P., Muller-Karger, F. E., and Dean, K.: Carbon and nitrogen cycling within the Bering/Chukchi Seas: source regions for organic matter effecting AOU demands of the Arctic Ocean, *Prog. Oceanogr.*, 22, 277–359, 1989.
- 15 Weiss, R. F.: The solubility of nitrogen, oxygen and argon in water and seawater, *Deep-Sea Res.*, 17, 721–735, 1970.
- Weiss, R. F.: Determination of gas carbon dioxide and methane by dual catalyst flame ionization chromatography and nitrous oxide by electron capture chromatography, *J. Chromatogr. Sci.*, 19, 611–616, 1981.
- 20 Wiegner, T. N. and Seitzinger, S. P.: Photochemical and microbial degradation of external dissolved organic matter inputs to rivers, *Aquat. Microb. Ecol.*, 24, 27–40, 2001.
- Zimov, S. A., Semiletov, I. P., Daviodov, S. P., Voropaev, Yu. V., Prosyannikov, S. F., Wong, C. S., and Chan, Y.-H.: Wintertime CO<sub>2</sub> emission from soils of Northeastern Siberia, *Arctic*, 46, 197–204, 1993.
- 25 Zimov, S. A., Voropaev, Yu. V., Semiletov, I. P., Daviodov, S. P., Chapin, F. S., and Trumbore, S.: North Siberian lakes: a methane source fueled by Pleistocene carbon, *Science*, 277, 800–802, 1997.

**BGD**

10, 2159–2204, 2013

**Carbon dynamics in the Buor-Khaya Bay of the Laptev Sea**

I. P. Semiletov et al.

Title Page

Abstract

Introduction

Conclusions

References

Tables

Figures

I◀

▶I

◀

▶

Back

Close

Full Screen / Esc

Printer-friendly Version

Interactive Discussion



**Table 1.** List of summer cruises and winter expeditions (1999–2011).

Cruise	Date
<i>Dunay</i> 1999	9 Sep to 24 Sep
<i>Nikolay Kolomeitsev</i> 2000	30 Aug to 5 Sep
Winter surveys 2002	15 Apr to 4 May
<i>Ivan Kireev</i> 2004	24 Aug to 1 Sep 14 Sep
<i>Neptun</i> 2005	3 Sep to 8 Sep
<i>Auga</i> 2005	21 Sep to 25 Sep
<i>Neptun</i> 2006	5 Sep to 27 Sep
Winter surveys 2007	3 Apr to 13 Apr
<i>Yakob Smirnitkiy</i> 2008	23 Aug to 29 Aug 16 Sep to 18 Sep
TB-0012 2008	14 Aug to 26 Aug
TB-0012 2009	25 Aug to 7 Sep
TB-0012 2010	24 Aug to 28 Aug
<i>Akademic Lavrentiev</i> 2011	18 Sep to 30 Sep

Discussion Paper | Discussion Paper | Discussion Paper | Discussion Paper | Discussion Paper

## BGD

10, 2159–2204, 2013

---

### Carbon dynamics in the Buor-Khaya Bay of the Laptev Sea

I. P. Semiletov et al.

---

[Title Page](#)

[Abstract](#) | [Introduction](#)

[Conclusions](#) | [References](#)

[Tables](#) | [Figures](#)

[⏪](#) | [⏩](#)

[◀](#) | [▶](#)

[Back](#) | [Close](#)

[Full Screen / Esc](#)

[Printer-friendly Version](#)

[Interactive Discussion](#)



**Table 2.** Correlation matrix of the environmental parameters observed in the BKB in 2005 ( $N = 43$ ).

	T	S	Alk	pH	$\rho\text{CO}_2$	$\text{O}_2$	$\text{PO}_4^{3-}$	Si	$\text{NO}_3^-$	$\text{NH}_4^+$	CDOM	POC	PM
T	1												
S	-0.97	1											
Alk	-0.97	0.99	1										
pH	0.74	-0.82	-0.84	1									
$\rho\text{CO}_2$	-0.69	0.77	0.80	-0.98	1								
$\text{O}_2$	0.82	-0.88	-0.90	0.98	-0.97	1							
$\text{PO}_4^{3-}$	-0.91	0.88	0.88	-0.62	0.53	-0.70	1						
Si	0.09	-0.07	0.00	-0.38	0.38	-0.30	-0.04	1					
$\text{NO}_3^-$	-0.93	0.93	0.95	-0.82	0.75	-0.87	0.92	0.18	1				
$\text{NH}_4^+$	-0.02	0.01	0.02	-0.14	0.11	-0.12	0.10	0.21	0.17	1			
CDOM	0.89	-0.91	-0.87	0.66	-0.59	0.71	-0.75	0.37	-0.76	0.06	1		
POC	0.27	-0.26	-0.31	0.11	-0.09	0.18	-0.44	-0.08	-0.37	0.20	0.05	1	
SPM	-0.16	0.16	0.12	-0.22	0.26	-0.19	-0.03	-0.14	0.07	-0.02	-0.27	0.70	1

## BGD

10, 2159–2204, 2013

### Carbon dynamics in the Buor-Khaya Bay of the Laptev Sea

I. P. Semiletov et al.

Title Page

Abstract

Introduction

Conclusions

References

Tables

Figures



Back

Close

Full Screen / Esc

Printer-friendly Version

Interactive Discussion





**Table 3.** Correlation matrix of the environmental parameters observed in the BKB in 2011 ( $N = 74$ ).

	T	S	Alk	pH	$p\text{CO}_2$	$\text{O}_2$	$\text{PO}_4^{3-}$	Si	$\text{NO}_3^-$	$\text{NH}_4^+$	CDOM	PM
T	1											
S	-0.26	1										
Alk	-0.33	0.99	1									
pH	0.31	-0.43	-0.42	1								
$p\text{CO}_2$	-0.42	0.81	0.82	-0.81	1							
$\text{O}_2$	0.35	-0.93	-0.94	0.61	-0.92	1						
$\text{PO}_4^{3-}$	-0.48	0.72	0.74	-0.61	0.83	-0.84	1					
Si	-0.22	-0.62	-0.58	-0.26	-0.16	0.44	-0.23	1				
$\text{NO}_3^-$	-0.68	0.71	0.75	-0.73	0.91	-0.84	0.85	-0.02	1			
$\text{NH}_4^+$	-0.06	-0.18	-0.21	-0.31	0.08	0.06	0.12	0.36	0.08	1		
CDOM	0.10	-0.91	-0.88	0.24	-0.63	0.79	-0.60	0.73	-0.53	0.28	1	
SPM	-0.32	0.27	0.25	-0.33	0.36	-0.33	0.46	-0.04	0.33	0.30	-0.15	1

## BGD

10, 2159–2204, 2013

### Carbon dynamics in the Buor-Khaya Bay of the Laptev Sea

I. P. Semiletov et al.

Title Page

Abstract

Introduction

Conclusions

References

Tables

Figures



Back

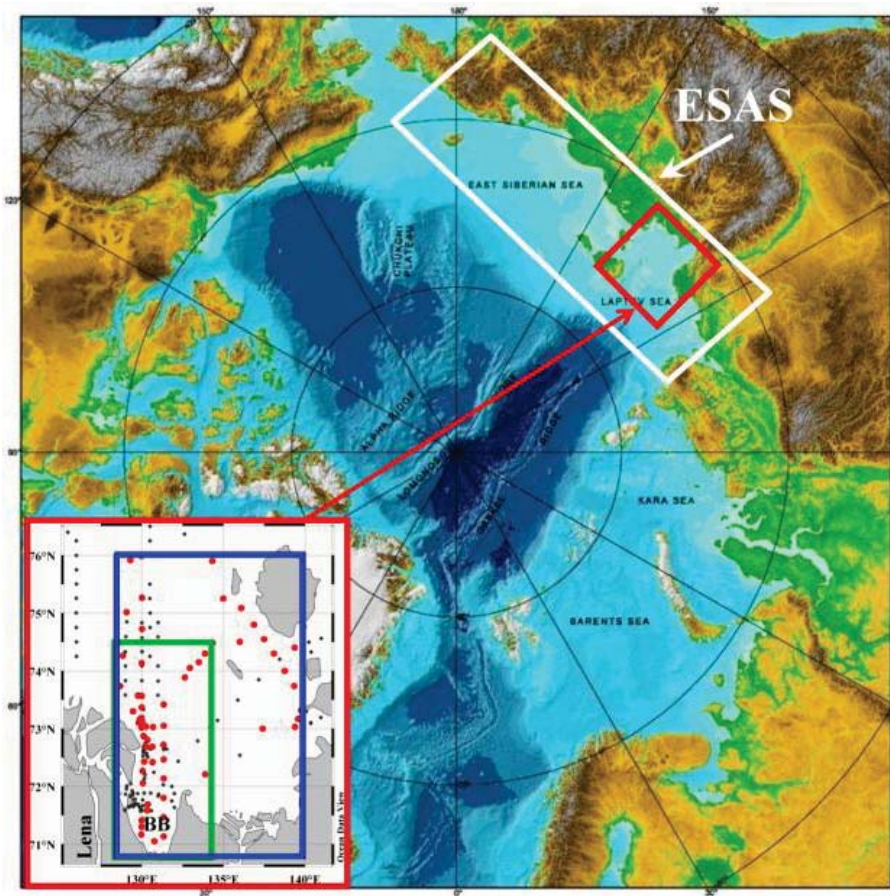
Close

Full Screen / Esc

Printer-friendly Version

Interactive Discussion





**Fig. 1.** Study area: position of the BKB of the Laptev Sea in the ESAS. Study area coverage with oceanological stations is shown in the lower left corner.

## BGD

10, 2159–2204, 2013

### Carbon dynamics in the Buor-Khaya Bay of the Laptev Sea

I. P. Semiletov et al.

Title Page

Abstract

Introduction

Conclusions

References

Tables

Figures



Back

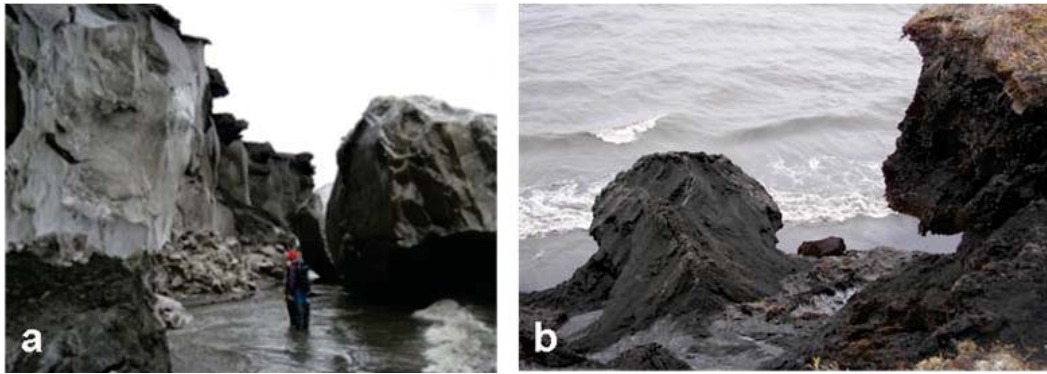
Close

Full Screen / Esc

Printer-friendly Version

Interactive Discussion





**Fig. 2.** Coastal erosion as seen on the northern cape of Muostakh Island (photos by I. P. Semiletov). During < 2 weeks in early September 2006, the North Cape of Muostakh Island (Buor-Khaya Gulf of the Laptev Sea) retreated > 20 m delivering a large amount of eroded OC to the sea.

## BGD

10, 2159–2204, 2013

### Carbon dynamics in the Buor-Khaya Bay of the Laptev Sea

I. P. Semiletov et al.

Title Page

Abstract

Introduction

Conclusions

References

Tables

Figures

◀

▶

◀

▶

Back

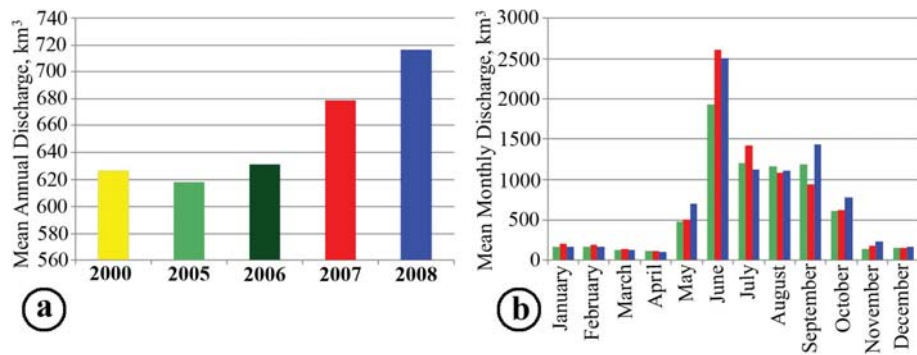
Close

Full Screen / Esc

Printer-friendly Version

Interactive Discussion





**Fig. 3.** Mean annual **(a)** and average monthly **(b)** Lena River discharge (Kusur observation station) documented during the period of BKB observations.

## BGD

10, 2159–2204, 2013

### Carbon dynamics in the Buor-Khaya Bay of the Laptev Sea

I. P. Semiletov et al.

Title Page

Abstract

Introduction

Conclusions

References

Tables

Figures



Back

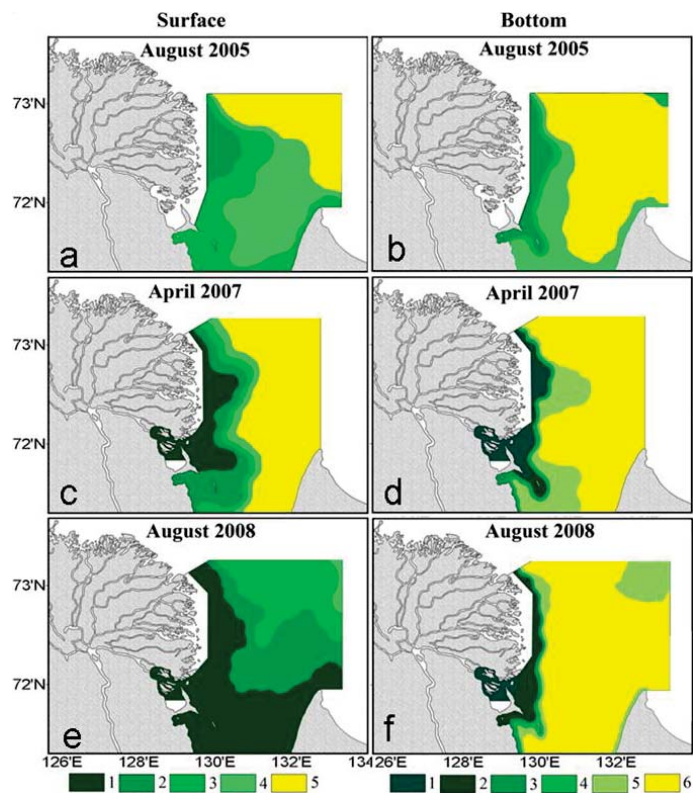
Close

Full Screen / Esc

Printer-friendly Version

Interactive Discussion





**Fig. 4.** Salinity of the surface and bottom BKB water layers. Salinity levels shown as colored rectangles below panels (e) and (f). For the surface layer: (1) 0–2.5, (2) 2.5–5, (3) 5–7.5, (4) 7.5–10, (5) > 10. For the bottom layer: (1) 0–5, (2) 5–10, (3) 10–15, (4) 15–20, (5) 20–25, (6) > 25.

## BGD

10, 2159–2204, 2013

### Carbon dynamics in the Buor-Khaya Bay of the Laptev Sea

I. P. Semiletov et al.

Title Page

Abstract

Introduction

Conclusions

References

Tables

Figures

◀

▶

◀

▶

Back

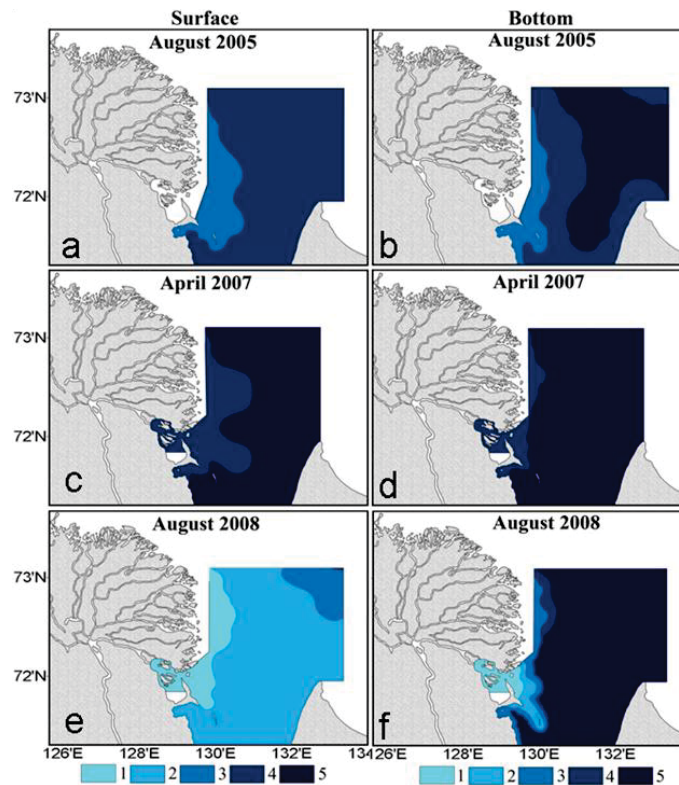
Close

Full Screen / Esc

Printer-friendly Version

Interactive Discussion





**Fig. 5.** Temperature of the surface and bottom BKB water layers. Temperature levels ( $^{\circ}\text{C}$ ) shown as colored rectangles below panels (e) and (f). For the surface layer: (1)  $> 15$ , (2)  $15-10$ , (3)  $10-5$ , (4)  $5-0$ , (5)  $< 0$ . For the bottom layer: (1)  $> 7.5$ , (2)  $7.5-5$ , (3)  $5-2.5$ , (4)  $2.5-0$ , (5)  $< 0$ .

## BGD

10, 2159–2204, 2013

### Carbon dynamics in the Buor-Khaya Bay of the Laptev Sea

I. P. Semiletov et al.

Title Page

Abstract

Introduction

Conclusions

References

Tables

Figures

◀

▶

◀

▶

Back

Close

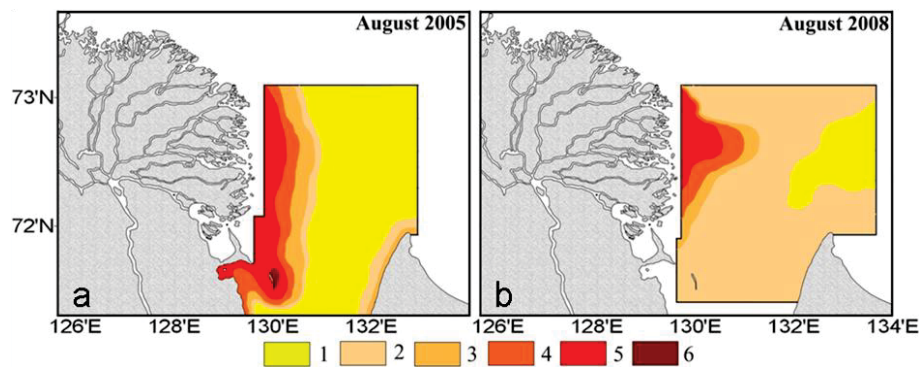
Full Screen / Esc

Printer-friendly Version

Interactive Discussion







**Fig. 6.** Distribution of POC in the BKB surface water layer. Concentration range is shown as colored rectangles below the panels ( $\text{mgL}^{-1}$ ): (1)  $< 0.25$ , (2)  $0.25\text{--}0.5$ , (3)  $0.5\text{--}0.75$ , (4)  $0.75\text{--}1$ , (5)  $1\text{--}1.25$ , (6)  $> 1.25$ .

## BGD

10, 2159–2204, 2013

### Carbon dynamics in the Buor-Khaya Bay of the Laptev Sea

I. P. Semiletov et al.

Title Page

Abstract

Introduction

Conclusions

References

Tables

Figures

◀

▶

◀

▶

Back

Close

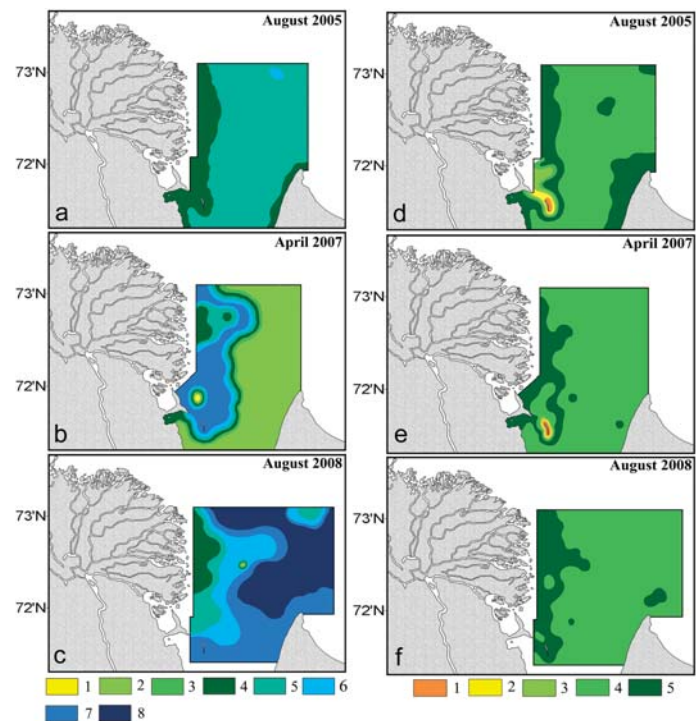
Full Screen / Esc

Printer-friendly Version

Interactive Discussion







**Fig. 7.** Inter-annual variability of  $\delta^{13}\text{C}$  of POC observed in BKB sea water (**a–c**) and surface sediments (**d–f**). Observed value ranges (‰) are shown as colored rectangles below the correspondent panels. For (**a–c**) panels: (1)  $>(-24)$ , (2)  $(-24)-(-25)$ , (3)  $(-25)-(-26)$ , (4)  $(-26)-(-27)$ , (5)  $(-27)-(-28)$ , (6)  $(-28)-(-29)$ , (7)  $(-29)-(-30)$ , (8)  $<(-30)$ ; for (**d–f**) panels: (1)  $(-22)-(-23)$ , (2)  $(-23)-(-24)$ , (3)  $(-24)-(-25)$ , (4)  $(-25)-(-26)$ , (5)  $(-26)-(-27)$ .

## BGD

10, 2159–2204, 2013

### Carbon dynamics in the Buor-Khaya Bay of the Laptev Sea

I. P. Semiletov et al.

Title Page

Abstract

Introduction

Conclusions

References

Tables

Figures

⏪

⏩

◀

▶

Back

Close

Full Screen / Esc

Printer-friendly Version

Interactive Discussion



## BGD

10, 2159–2204, 2013

Carbon dynamics in  
the Buor-Khaya Bay  
of the Laptev Sea

I. P. Semiletov et al.

Title Page

Abstract

Introduction

Conclusions

References

Tables

Figures

◀

▶

◀

▶

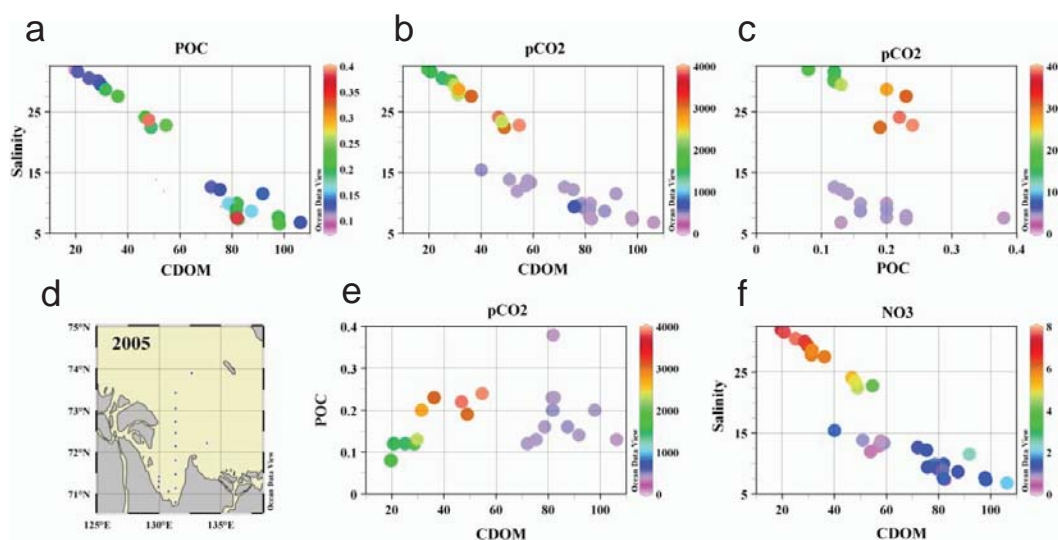
Back

Close

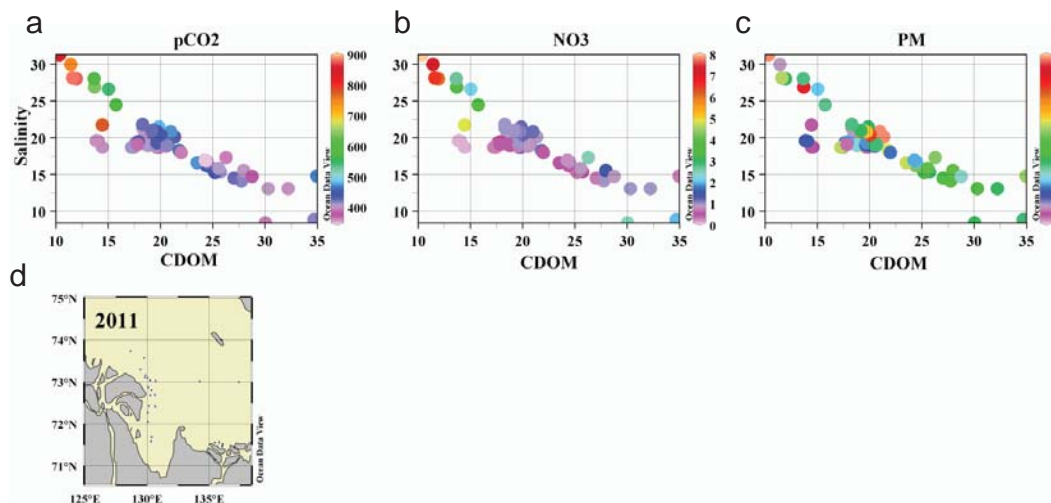
Full Screen / Esc

Printer-friendly Version

Interactive Discussion



**Fig. 8.** Plots of POC, mgL<sup>-1</sup> (a) and pCO<sub>2</sub>, μatm (b) color coded by salinity and CDOM; pCO<sub>2</sub> color coded by POC (c) and CDOM (e); NO<sub>3</sub><sup>-</sup>, μM color coded by salinity and CDOM (f). Position of the transect conducted in September 2005 is shown in panel (d).



**Fig. 9.** Plots of  $p\text{CO}_2$ ,  $\mu\text{atm}$ , color coded by salinity and CDOM,  $\text{mgm}^{-3}$  **(a)**;  $\text{NO}_3^-$  ( $\mu\text{M}$ ) color coded by salinity and CDOM **(b)**; SPM ( $\text{mgL}^{-1}$ ) color coded by salinity and CDOM **(c)**. Position of transect performed in 2011 is shown in panel **(d)**.

## BGD

10, 2159–2204, 2013

### Carbon dynamics in the Buor-Khaya Bay of the Laptev Sea

I. P. Semiletov et al.

Title Page

Abstract

Introduction

Conclusions

References

Tables

Figures

⏪

⏩

◀

▶

Back

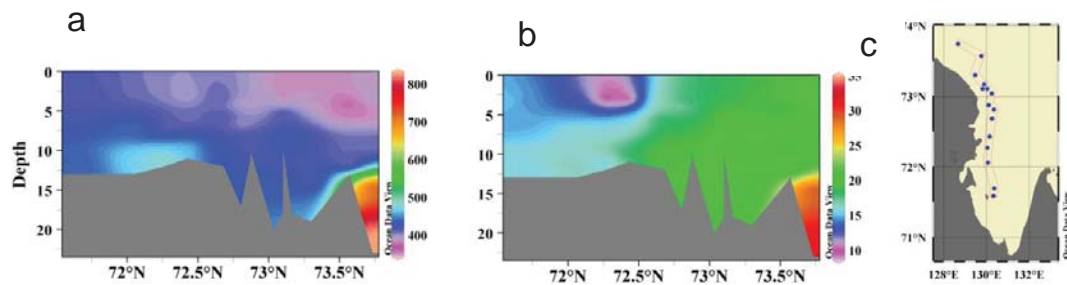
Close

Full Screen / Esc

Printer-friendly Version

Interactive Discussion





**Fig. 10.** Distribution of  $p\text{CO}_2$ ,  $\mu\text{atm}$  **(a)** and salinity **(b)** in the water column of the BKB along the transect observed in 2011. Position of transect is shown in panel **(c)**.

## BGD

10, 2159–2204, 2013

### Carbon dynamics in the Buor-Khaya Bay of the Laptev Sea

I. P. Semiletov et al.

Title Page

Abstract

Introduction

Conclusions

References

Tables

Figures



Back

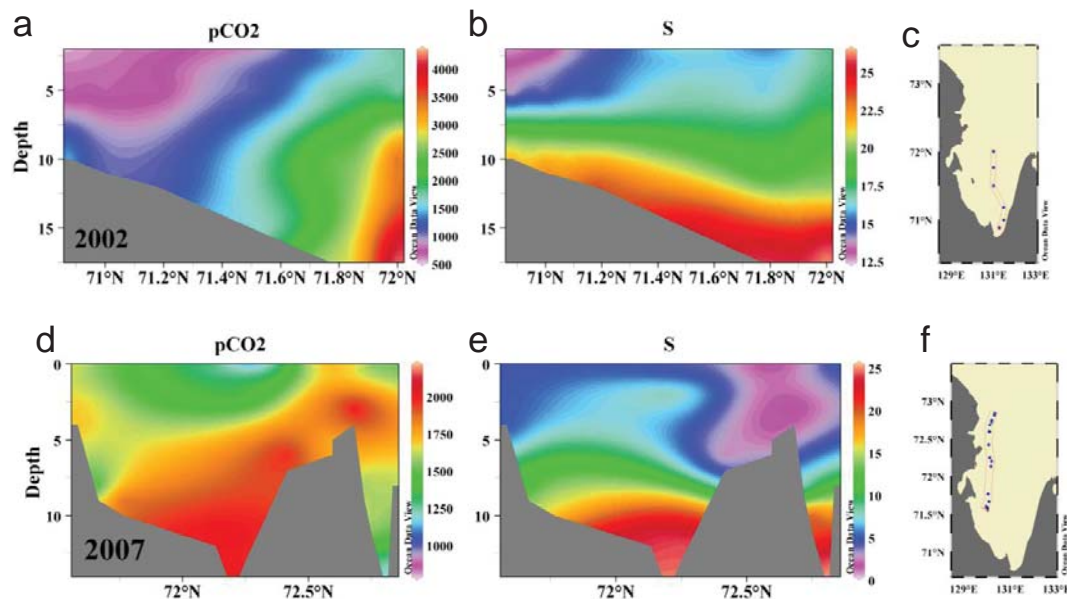
Close

Full Screen / Esc

Printer-friendly Version

Interactive Discussion





**Fig. 11.** Vertical distribution of  $p\text{CO}_2$ ,  $\mu\text{atm}$  ((a), 2002; (d), 2007) and salinity ((b), 2002; (e), 2007) in the water column observed in the BKB in winters 2002 and 2007. Positions of transects are shown in (c) (2002) and panel (f) (2007).

## BGD

10, 2159–2204, 2013

### Carbon dynamics in the Buor-Khaya Bay of the Laptev Sea

I. P. Semiletov et al.

Title Page

Abstract

Introduction

Conclusions

References

Tables

Figures

◀

▶

◀

▶

Back

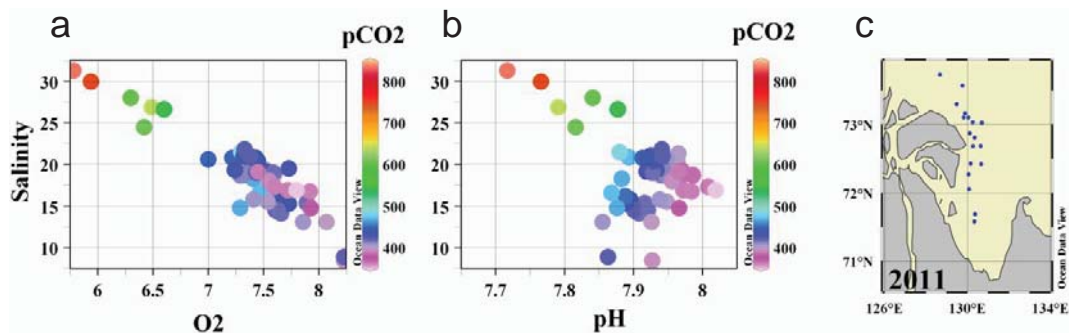
Close

Full Screen / Esc

Printer-friendly Version

Interactive Discussion





**Fig. 12.** Plots of  $p\text{CO}_2$ ,  $\mu\text{atm}$ , color coded by salinity and  $\text{O}_2$ , **(a)**;  $p\text{CO}_2$  color coded by salinity and pH **(b)**. Position of transects is shown in panel **(c)**.

## BGD

10, 2159–2204, 2013

### Carbon dynamics in the Buor-Khaya Bay of the Laptev Sea

I. P. Semiletov et al.

Title Page

Abstract

Introduction

Conclusions

References

Tables

Figures

◀

▶

◀

▶

Back

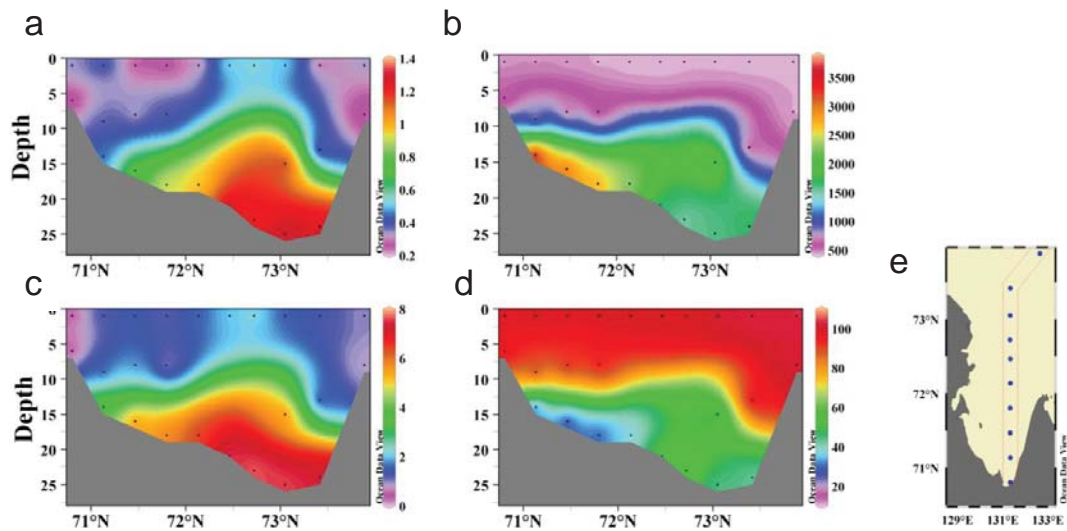
Close

Full Screen / Esc

Printer-friendly Version

Interactive Discussion





**Fig. 13.** Vertical distribution of  $\text{PO}_4^{3-}$ ,  $\mu\text{M}$  (a),  $p\text{CO}_2$ ,  $\mu\text{atm}$  (b),  $\text{NO}_3^-$ ,  $\mu\text{M}$  (c), and  $\text{O}_2$ , % (d) in the water column observed in the BKB in summer 2005. Transect position is shown in panel (e).

## BGD

10, 2159–2204, 2013

### Carbon dynamics in the Buor-Khaya Bay of the Laptev Sea

I. P. Semiletov et al.

Title Page

Abstract

Introduction

Conclusions

References

Tables

Figures



Back

Close

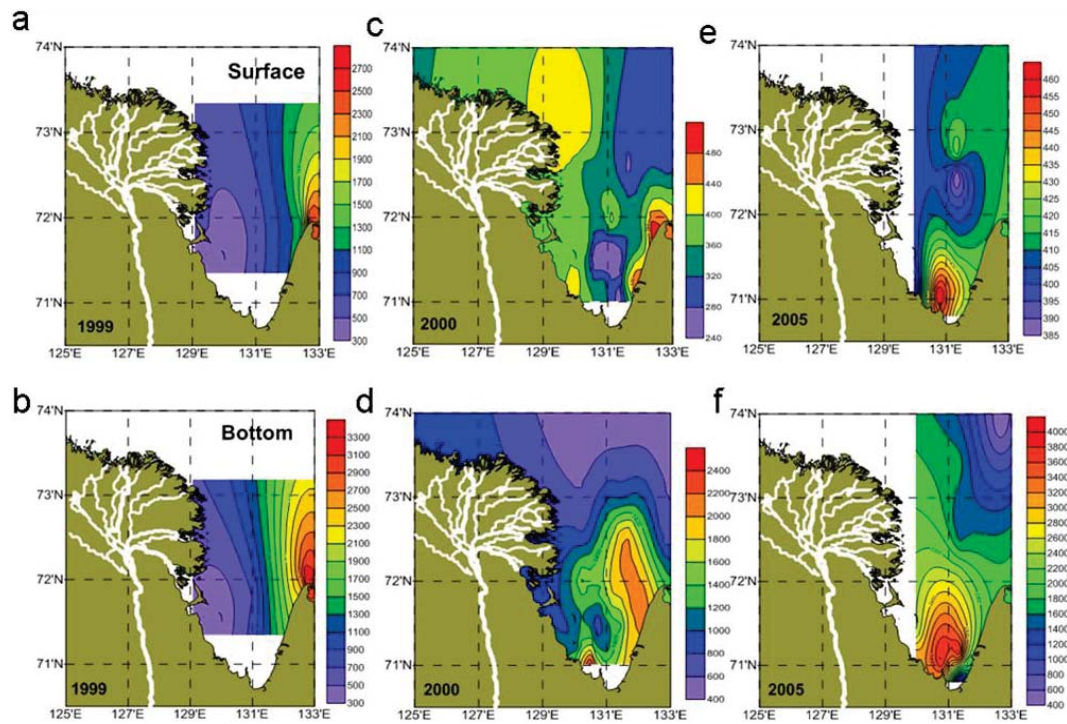
Full Screen / Esc

Printer-friendly Version

Interactive Discussion







**Fig. 14.** Distribution of  $p\text{CO}_2$  ( $\mu\text{atm}$ ) in the surface and bottom water layer of the BKB observed in 1999 (a, b), 2000 (c, d), and 2005 (e, f).

## BGD

10, 2159–2204, 2013

### Carbon dynamics in the Buor-Khaya Bay of the Laptev Sea

I. P. Semiletov et al.

Title Page

Abstract

Introduction

Conclusions

References

Tables

Figures



Back

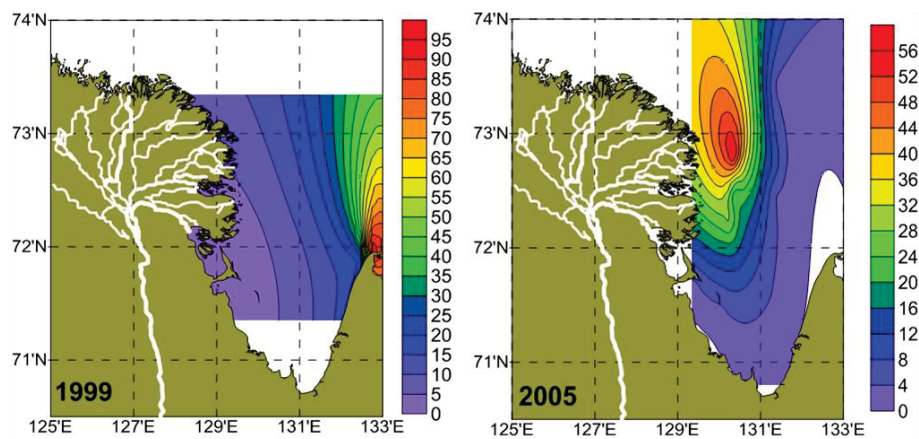
Close

Full Screen / Esc

Printer-friendly Version

Interactive Discussion





**Fig. 15.** Distribution of sea-air CO<sub>2</sub> fluxes,  $F_{\text{CO}_2}$ ,  $\text{mmol m}^{-2} \text{day}^{-1}$  in the BKB observed in September 1999 (left panel) and September 2005 (right panel).

## BGD

10, 2159–2204, 2013

### Carbon dynamics in the Buor-Khaya Bay of the Laptev Sea

I. P. Semiletov et al.

Title Page

Abstract

Introduction

Conclusions

References

Tables

Figures



Back

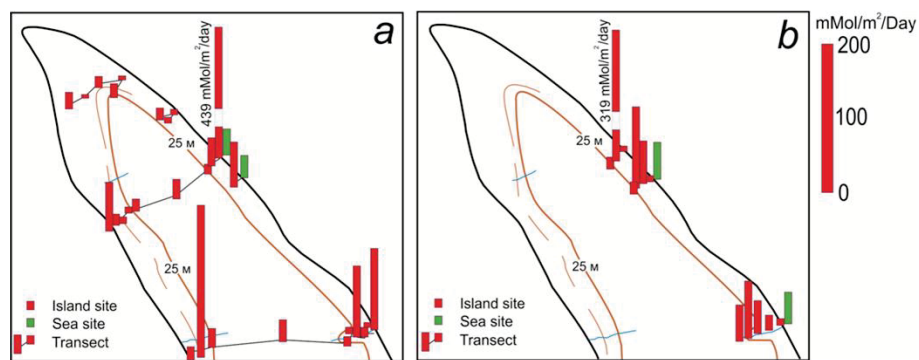
Close

Full Screen / Esc

Printer-friendly Version

Interactive Discussion





**Fig. 16.** Distribution of CO<sub>2</sub> outgassing ( $F_{\text{CO}_2}$ ,  $\text{mmol m}^{-2} \text{day}^{-1}$ ) from Muostakh Island sites (red columns) and from sea sites (green columns) in September 2006 (a), and in September 2009 (b).

## BGD

10, 2159–2204, 2013

### Carbon dynamics in the Buor-Khaya Bay of the Laptev Sea

I. P. Semiletov et al.

Title Page

Abstract

Introduction

Conclusions

References

Tables

Figures

⏪

⏩

◀

▶

Back

Close

Full Screen / Esc

Printer-friendly Version

Interactive Discussion

