

2015

New Host and County Records of the Fish Leech *Cystobranchnus klemmi* (Hirudinida: Piscicolidae) in Arkansas

C. S. Thigpen

Arkansas State University, christopher.thigpen@smail.astate.edu

S. E. Trauth

Arkansas State University

L. I. Bagwell

Arkansas State University

J. D. Konvalina

Arkansas State University

S. A. Schratz

Arkansas State University

See next page for additional authors

Follow this and additional works at: <http://scholarworks.uark.edu/jaas>

 Part of the [Zoology Commons](#)

Recommended Citation

Thigpen, C. S.; Trauth, S. E.; Bagwell, L. I.; Konvalina, J. D.; Schratz, S. A.; McAllister, C. T.; Moser, D. E.; Richardson, D. J.; and Robison, H. W. (2015) "New Host and County Records of the Fish Leech *Cystobranchnus klemmi* (Hirudinida: Piscicolidae) in Arkansas," *Journal of the Arkansas Academy of Science*: Vol. 69 , Article 30.

Available at: <http://scholarworks.uark.edu/jaas/vol69/iss1/30>

This article is available for use under the Creative Commons license: Attribution-NoDerivatives 4.0 International (CC BY-ND 4.0). Users are able to read, download, copy, print, distribute, search, link to the full texts of these articles, or use them for any other lawful purpose, without asking prior permission from the publisher or the author.

This General Note is brought to you for free and open access by ScholarWorks@UARK. It has been accepted for inclusion in Journal of the Arkansas Academy of Science by an authorized editor of ScholarWorks@UARK. For more information, please contact scholar@uark.edu, ccmiddle@uark.edu.

New Host and County Records of the Fish Leech *Cystobranchnus klemmi* (Hirudinida: Piscicolidae) in Arkansas

Authors

C. S. Thigpen, S. E. Trauth, L. I. Bagwell, J. D. Konvalina, S. A. Schratz, C. T. McAllister, D. E. Moser, D. J. Richardson, and H. W. Robison

New Host and County Records of the Fish Leech *Cystobranchus klemmi* (Hirudinida: Piscicolidae) in Arkansas

C.S. Thigpen^{1*}, S.E. Trauth¹, L.I. Bagwell¹, J.D. Konvalina¹, S.A. Schratz¹, C.T. McAllister², W.E. Moser³, D.J. Richardson⁴, and H.W. Robison⁵

¹Department of Biological Sciences, Arkansas State University P.O. Box 599, State University, AR 7246

²Science and Mathematics Division, Eastern Oklahoma State College, Idabel, OK 74745

³Smithsonian Institution, National Museum of Natural History, Department of Invertebrate Zoology, Museum Support Center-MRC 534, 4210 Silver Hill Road, Suitland, MD 20746

⁴Department of Biological Sciences, Quinnipiac University, 275 Mt. Carmel Avenue, Hamden, CT 06518

⁵Department of Biology, Southern Arkansas University, Magnolia, AR 71754

*Correspondence: christopher.thigpen@smail.astate.edu

Running Title: New Host and County Records of *Cystobranchus klemmi*

Cystobranchus klemmi is a piscicolid fish leech first described by Williams and Bureson (2005) as *Gonimosobdella klemmi* and transferred to *Cystobranchus* by Williams and Bureson (2006). The first specimens were obtained from the Central Stoneroller, *Campostoma anomalum*, and Largescale Stoneroller, *Campostoma oligolepis*, from the Little Red River in Searcy County, Arkansas. Subsequently, Richardson et al. (2013) reported *C. klemmi* from Carroll, Franklin, Garland, Howard, Hot Spring, Independence, Madison, Montgomery, Pike, and Sevier counties in Arkansas (Fig. 1) and expanded the host list to include the Southern Redbelly Dace, *Chrosomus erythrogaster*, and Creek Chub, *Semotilus atromaculatus*.

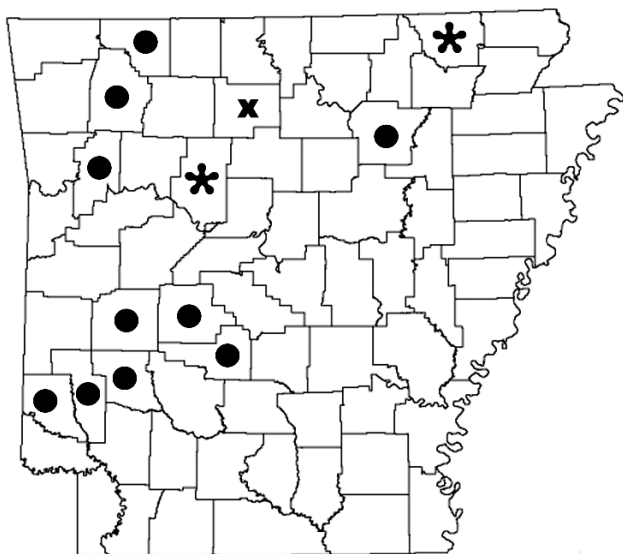


Figure 1. Known distribution of *Cystobranchus klemmi* as given by Williams and Bureson (2005) (X) and Richardson et al. (2013) (•). Localities reported herein (*).

A single individual of *C. klemmi* was collected from a Bigeye Shiner, *Notropis boops*, on 4 April 2014 from Eassis Creek in Randolph County (YPM67784) representing a new host and county record in Arkansas. Eighteen individuals *C. klemmi* were also collected from a single *C. anomalum* on 9 April 2014 from McCoy Creek in Pope County (YPM IZ 075985) representing a new county record. *C. klemmi* was also collected on 17 January 2015 from Central Stonerollers from Jane's Creek in Randolph County (YPM IZ 075986) (Fig. 2).

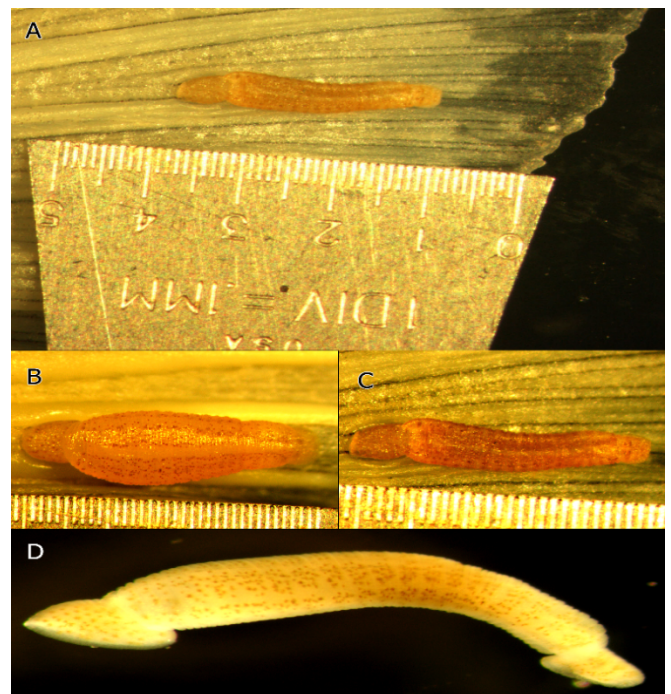


Figure 2. Leeches collected on 17 January 2015. Leech on caudal fin of *C. anomalum* (A, B, C) and detached leech (D). Each notch on ruler is 100 μ m.

Voucher specimens of leeches were deposited in the Invertebrate Zoology Collections of the Peabody Museum of Natural History at Yale University, New Haven, Connecticut.

In summary, we have provided additional information on *C. klemmi* in Arkansas. Additional study is suggested in other parts of the state, particularly eastern and southern Arkansas, where other potential hosts of this leech might be expected.

Acknowledgments

We thank the Arkansas Game and Fish Commission for a scientific collection permit and Dr. Brook Fluker for assistance in fish identification.

Literature Cited

- Richardson DJ, R Tumilson, JW Allen Jr, WE Moser, CT McAllister, SE Trauth, and HW Robison.** 2013. New host records for the fish leech *Cystobranchus klemmi* (Hirudinida: Piscicolidae) on cyprinid fishes from Arkansas and Oklahoma. *Journal of the Arkansas Academy of Science* 67:211-213.
- Williams JI and EM Burreson.** 2005. *Gonimosobdella klemmi* n. gen., n. sp. (Hirudinida: Piscicolidae) from cyprinid fishes in Arkansas, Illinois, and Missouri, U.S.A. *Comparative Parasitology* 72:166-172.
- Williams JI and EM Burreson.** 2006. Phylogeny of the fish leeches (Oligochaeta, Hirudinida, Piscicolidae) based on nuclear and mitochondrial genes and morphology. *Zoologica Scripta* 35:627-639.