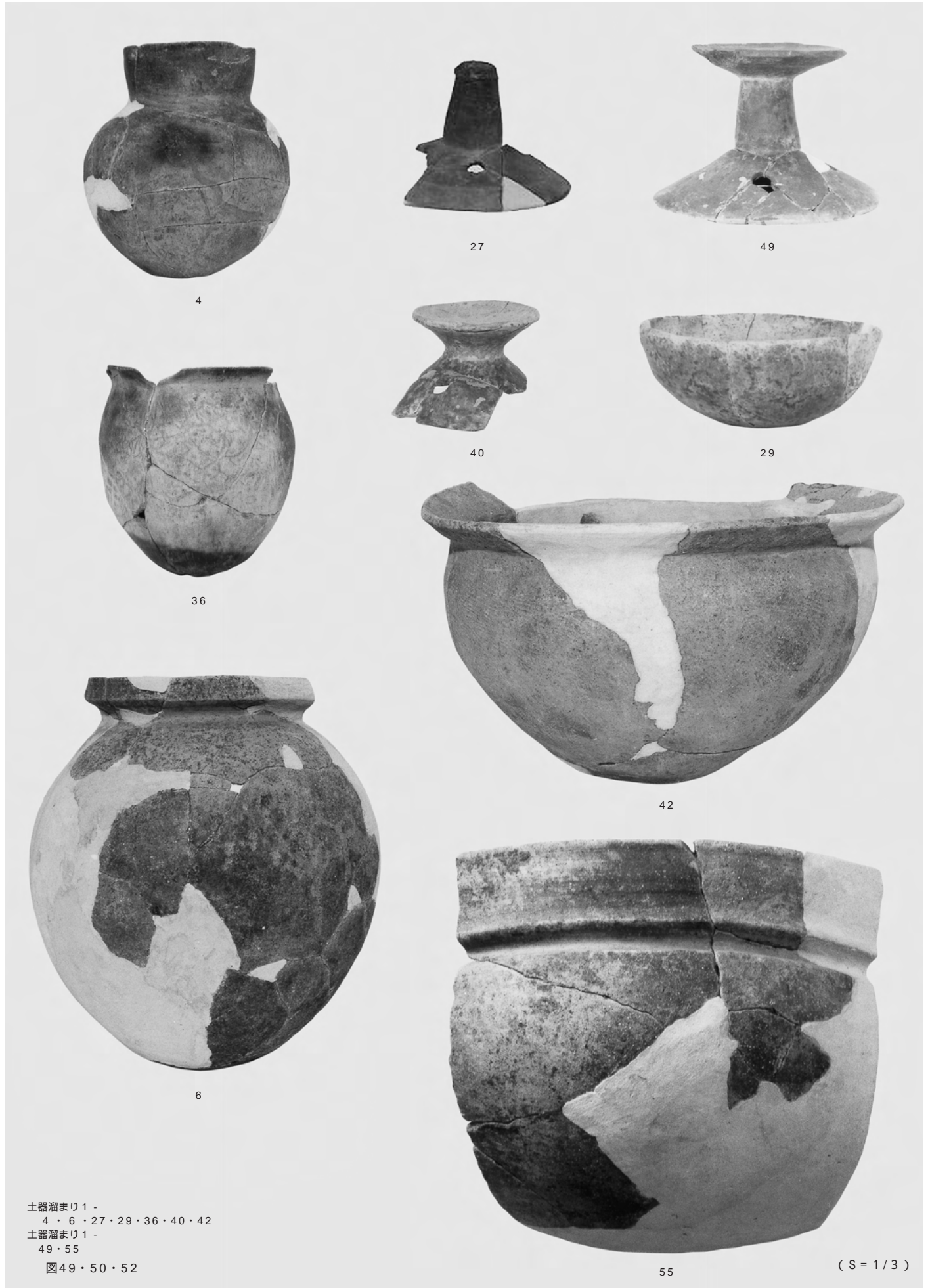




図版 2 古墳時代初頭の土師器 (2) 土器溜まり 1

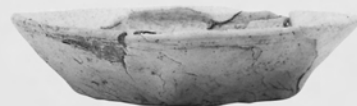




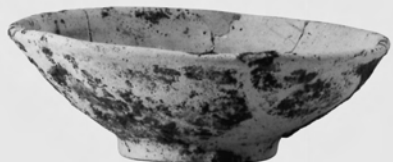
溝6: 図72-1



溝6: 図72-14



柱穴: 図69-5



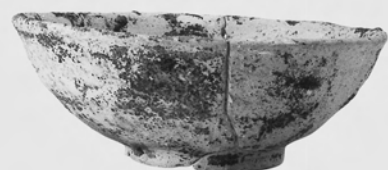
溝6: 図72-3



柱穴: 図69-1



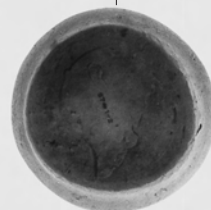
溝6: 図72-18



溝6: 図72-4



井戸2: 図57-1



井戸3: 図60-7



柱穴: 図69-6



溝6: 図72-9



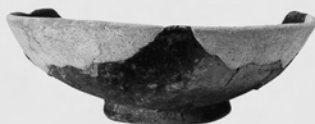
柱穴: 図69-2



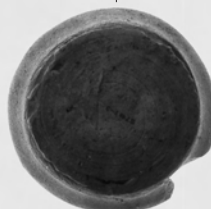
柱穴: 図69-8



溝6: 図72-10



溝19: 図87-1



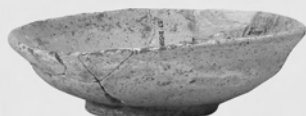
井戸3: 図60-6



柱穴: 図69-9



溝6: 図72-12



柱穴: 図69-4



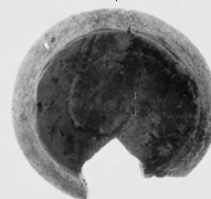
溝21: 図95-9



溝6: 図72-11



溝20: 図91-2



井戸2: 図57-8



土坑9: 図65-14



溝6: 図72-7



溝23: 図97-5



溝21: 図95-5



溝21: 図95-6

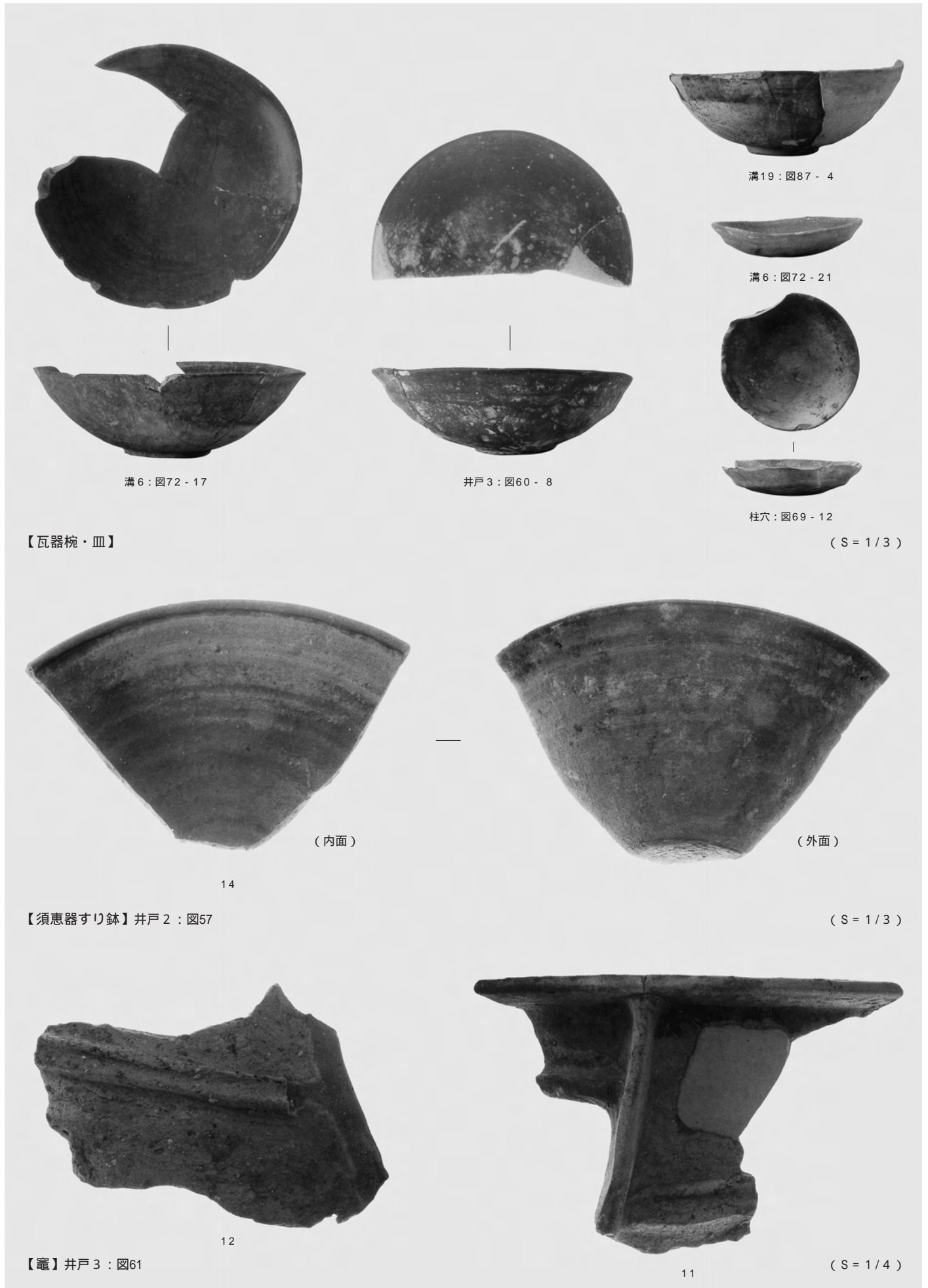


溝21: 図95-4



溝21: 図95-7

図版4 古代末～中世の土器(2): 瓦器・須恵器他



溝19: 図87 - 4

溝6: 図72 - 21

溝6: 図72 - 17

井戸3: 図60 - 8

柱穴: 図69 - 12

(S = 1/3)

【瓦器碗・皿】



(内面)

14



(外面)

【須恵器すり鉢】井戸2: 図57

(S = 1/3)



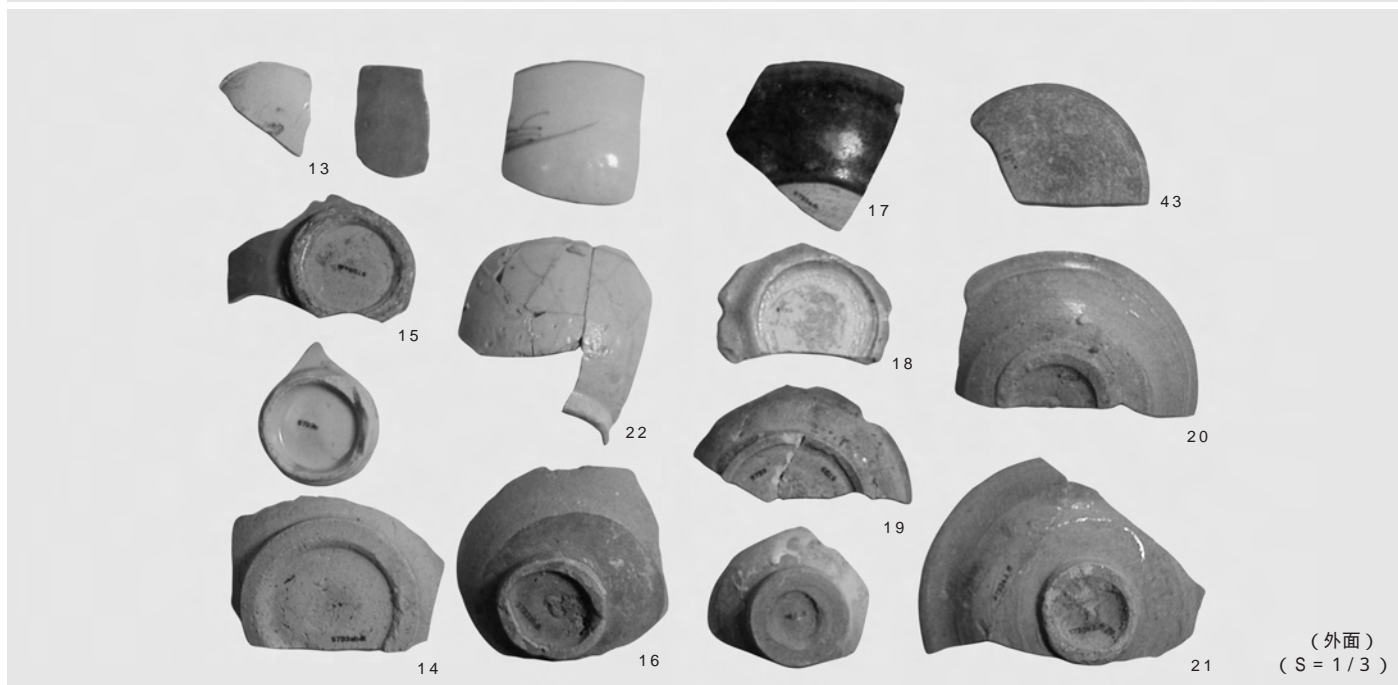
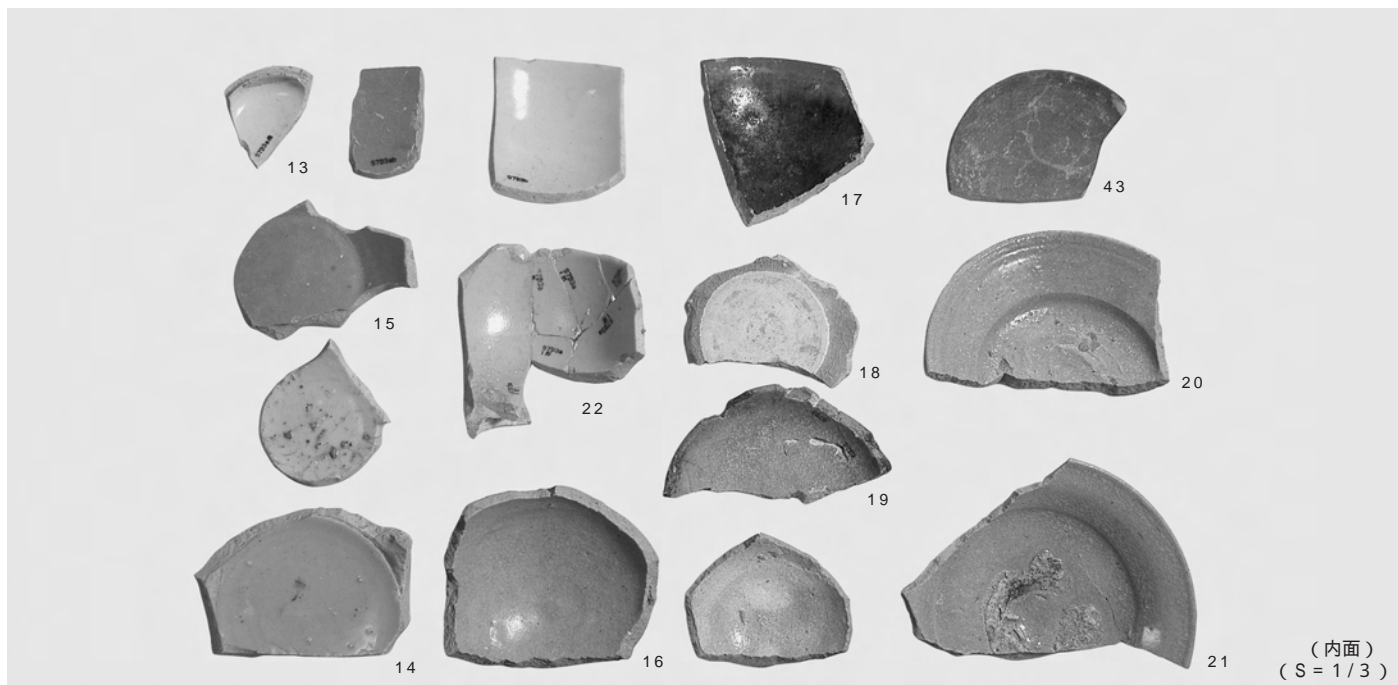
12

【竈】井戸3: 図61



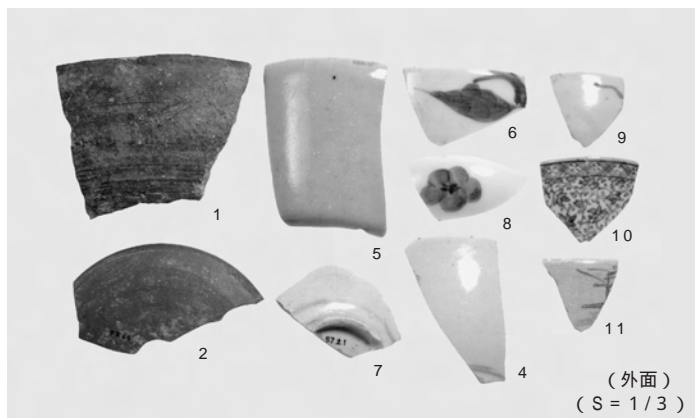
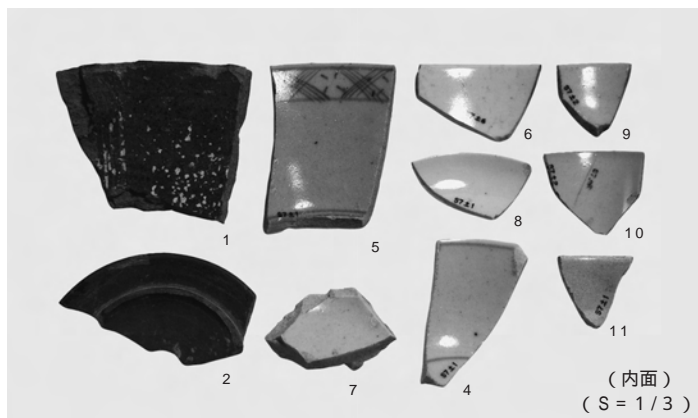
11

(S = 1/4)



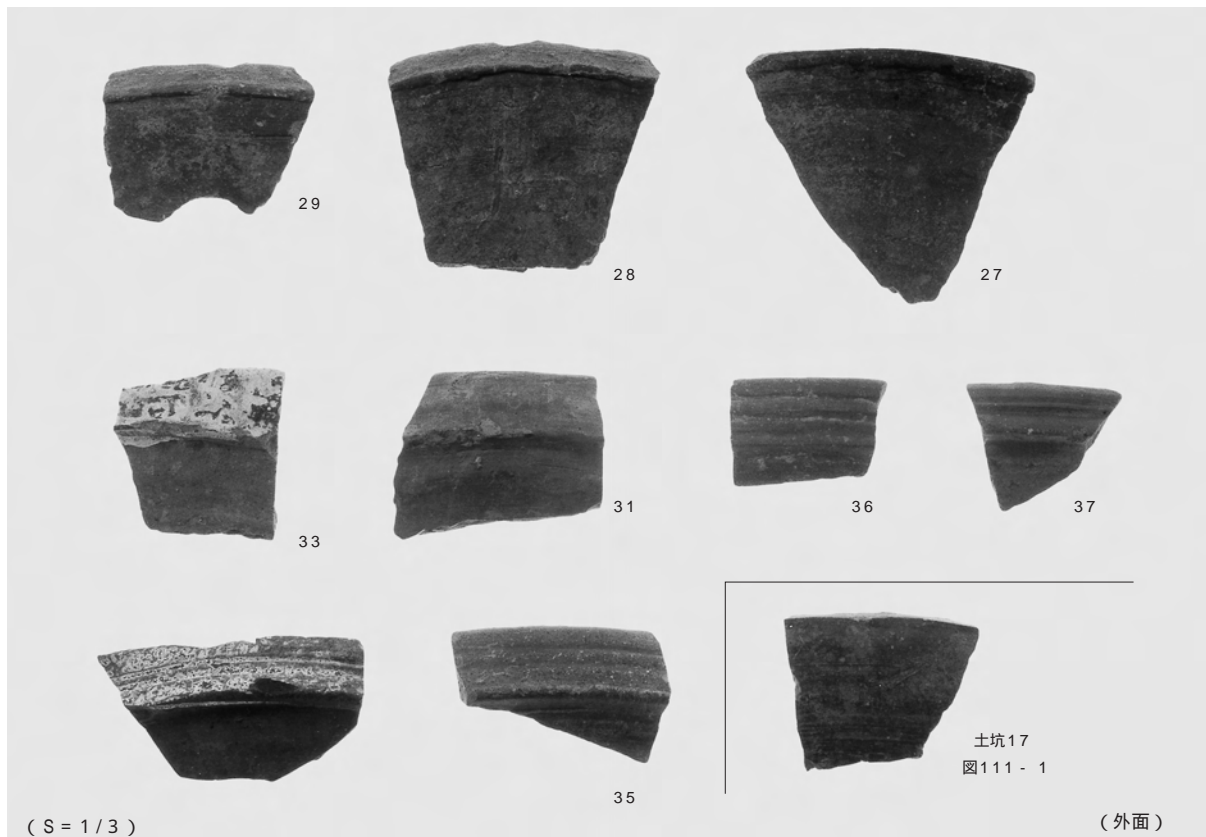
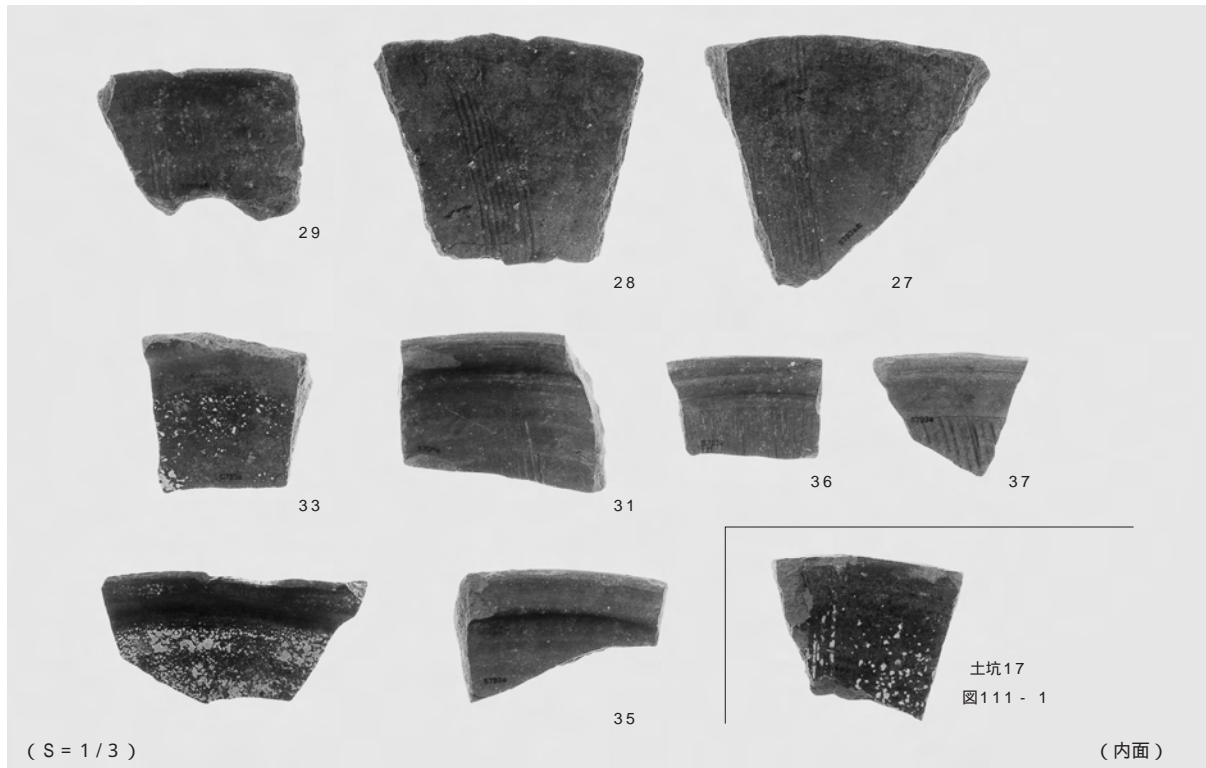
【中世～近世の陶磁器】溝23：図97・図98

番号なしは本文中未掲載



【近世の陶磁器】土坑10～13・15～17：図111

図版6 中世・近世の備前焼・瓦他



【備前焼】溝23：図98 番号なしは本文中に未掲載





S5: 図51



S2: 図21



S38: 図119



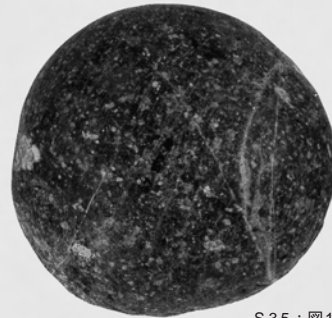
S37: 図119



S36: 図119



S3: 図24



S35: 図119

【石錘】

- S2: 竪穴住居3
- S3: 竪穴住居4
- S5: 土器溜まり1
- S36・38: 包含層

【磨石・叩石】

- S35・37: 包含層



S8: 図70



S19: 図87



S25: 図119



S29: 図119



S6: 図51



S20: 図99



S21: 図99



S26: 図119



S27: 図119



S28: 図119



S30: 図119



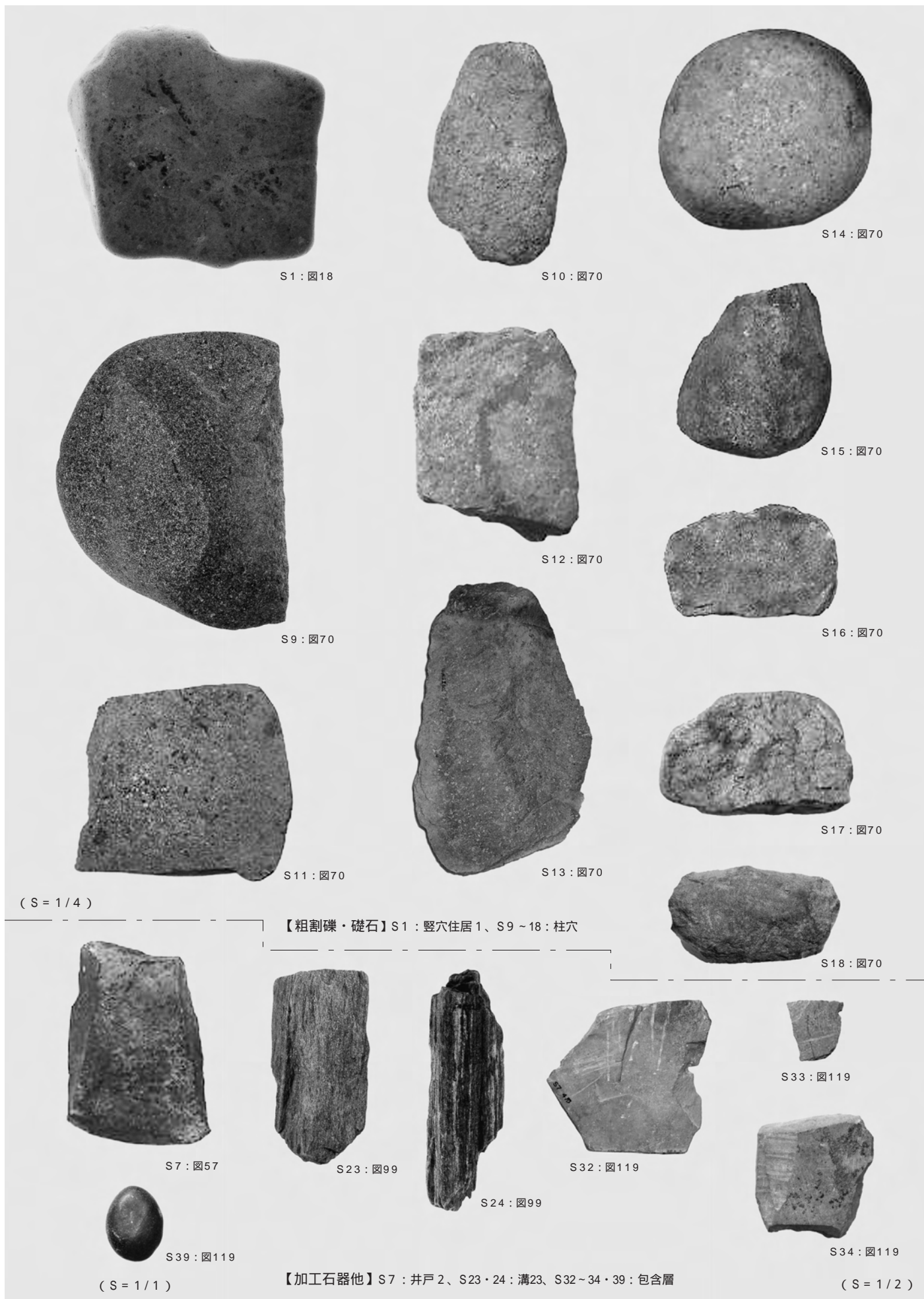
S31: 図119

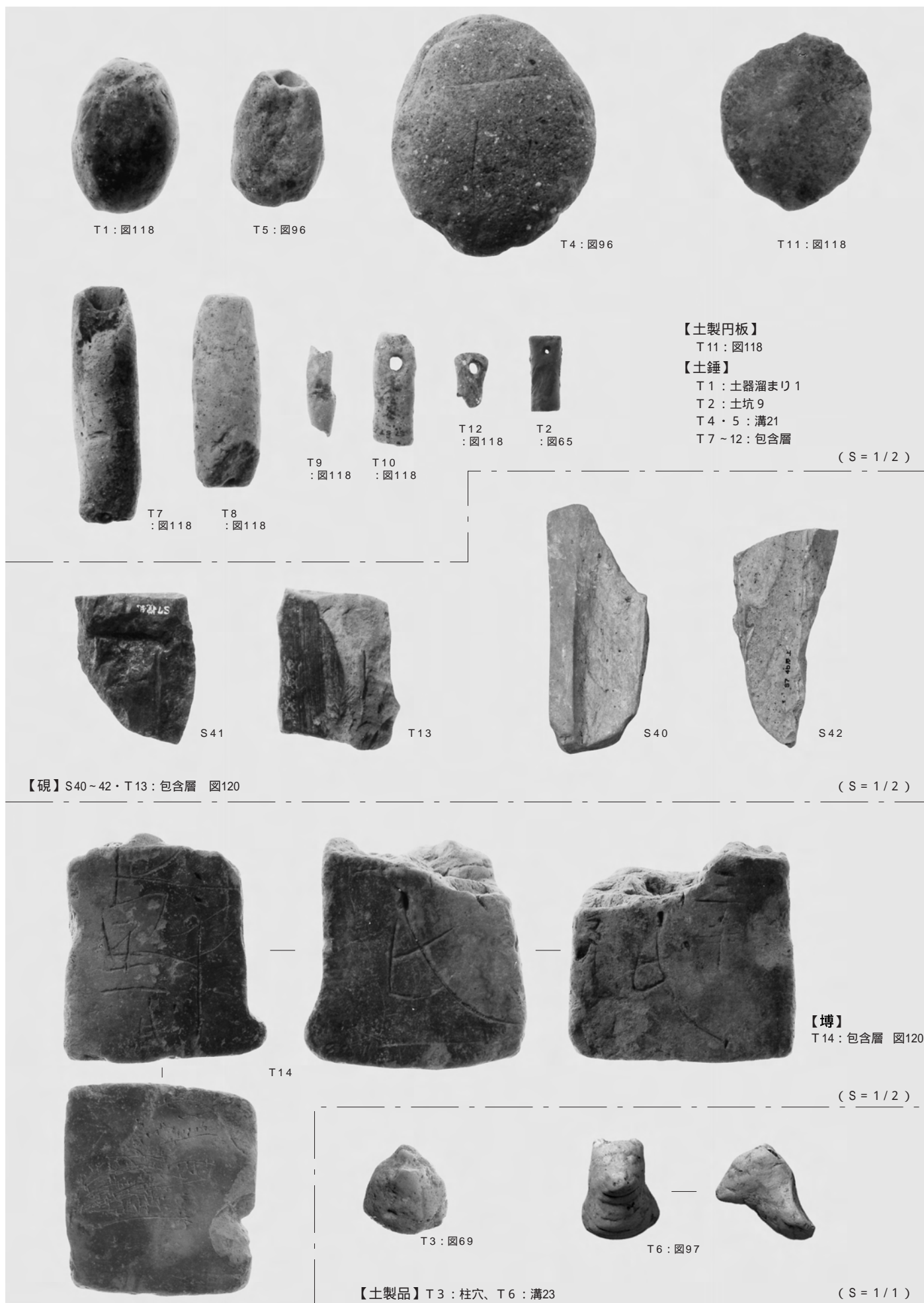


S22: 図99

【砥石】S6: 土器溜まり1、S8: 柱穴、S19: 溝19、S20~22: 溝23、S25~31: 包含層

図版 8 石器 (2): 粗割石・加工石器





T1 : 図118

T5 : 図96

T4 : 図96

T11 : 図118

【土製円板】

T11 : 図118

【土錘】

T1 : 土器溜まり1

T2 : 土坑9

T4・5 : 溝21

T7~12 : 包含層

(S = 1 / 2)

T7 : 図118

T8 : 図118

T9 : 図118

T10 : 図118

T12 : 図118

T2 : 図65

【硯】 S40~42・T13 : 包含層 図120

(S = 1 / 2)

【埴】

T14 : 包含層 図120

(S = 1 / 2)

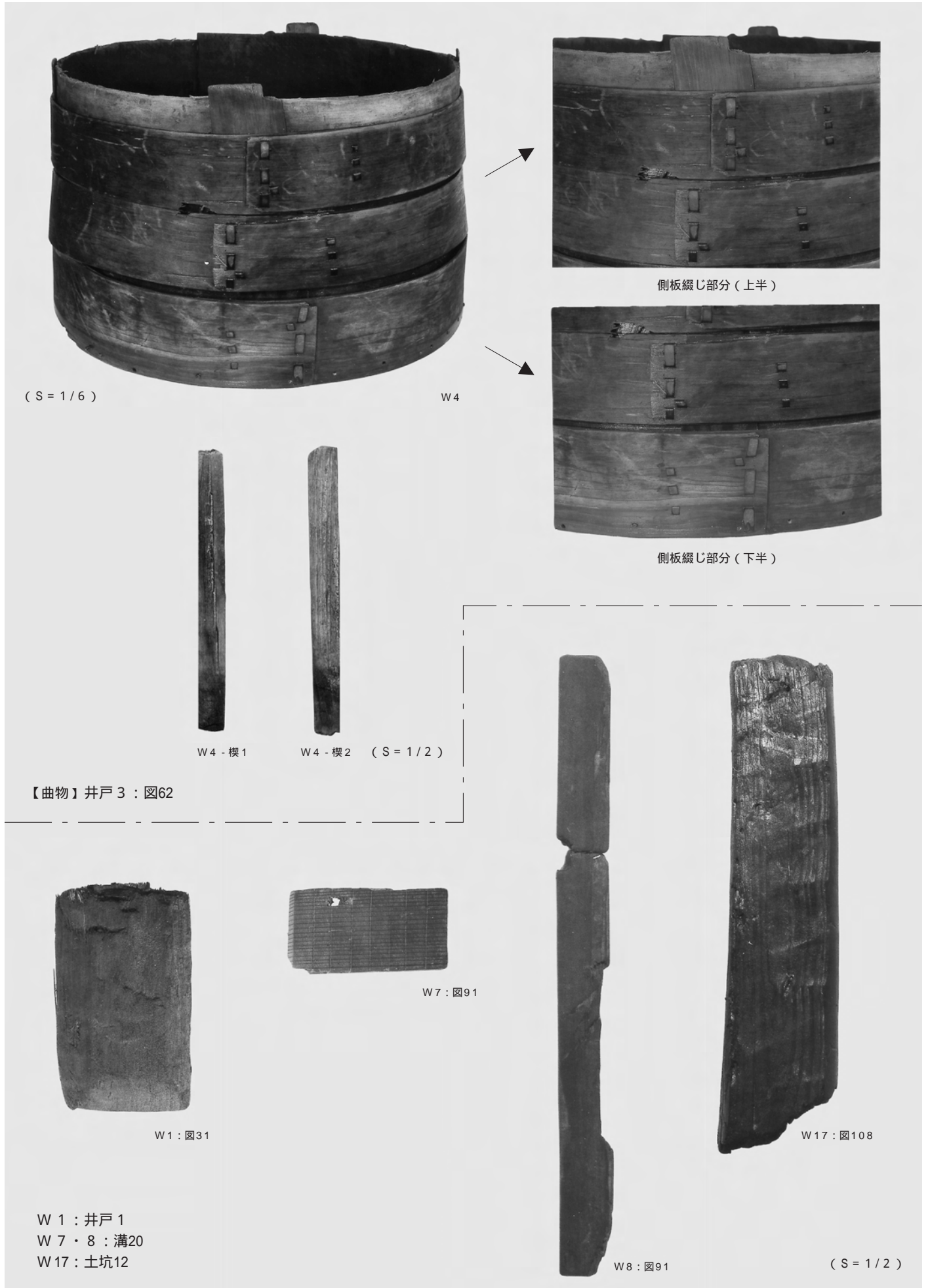
T3 : 図69

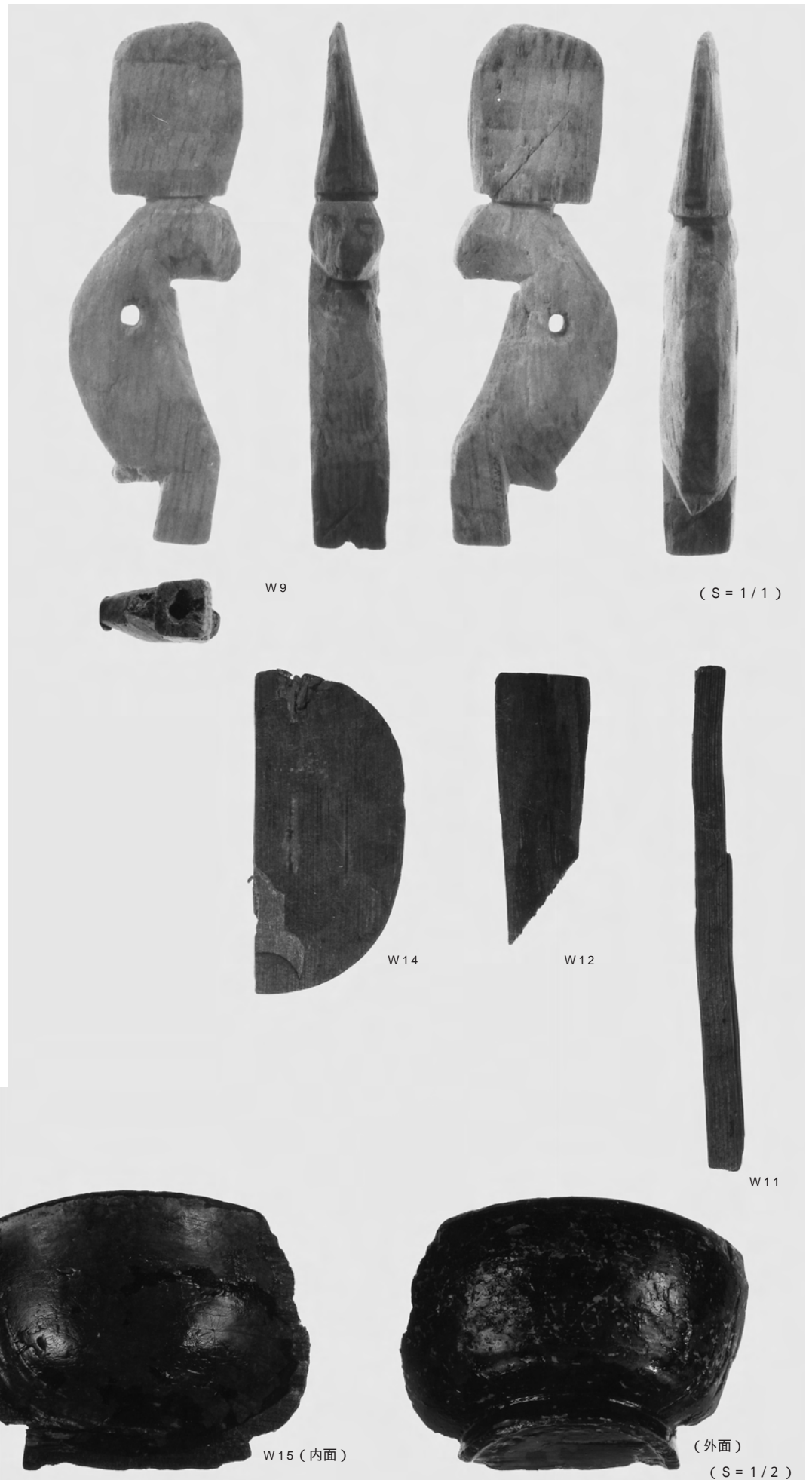
T6 : 図97

【土製品】 T3 : 柱穴、T6 : 溝23

(S = 1 / 1)

図版10 木器(1): 曲物他

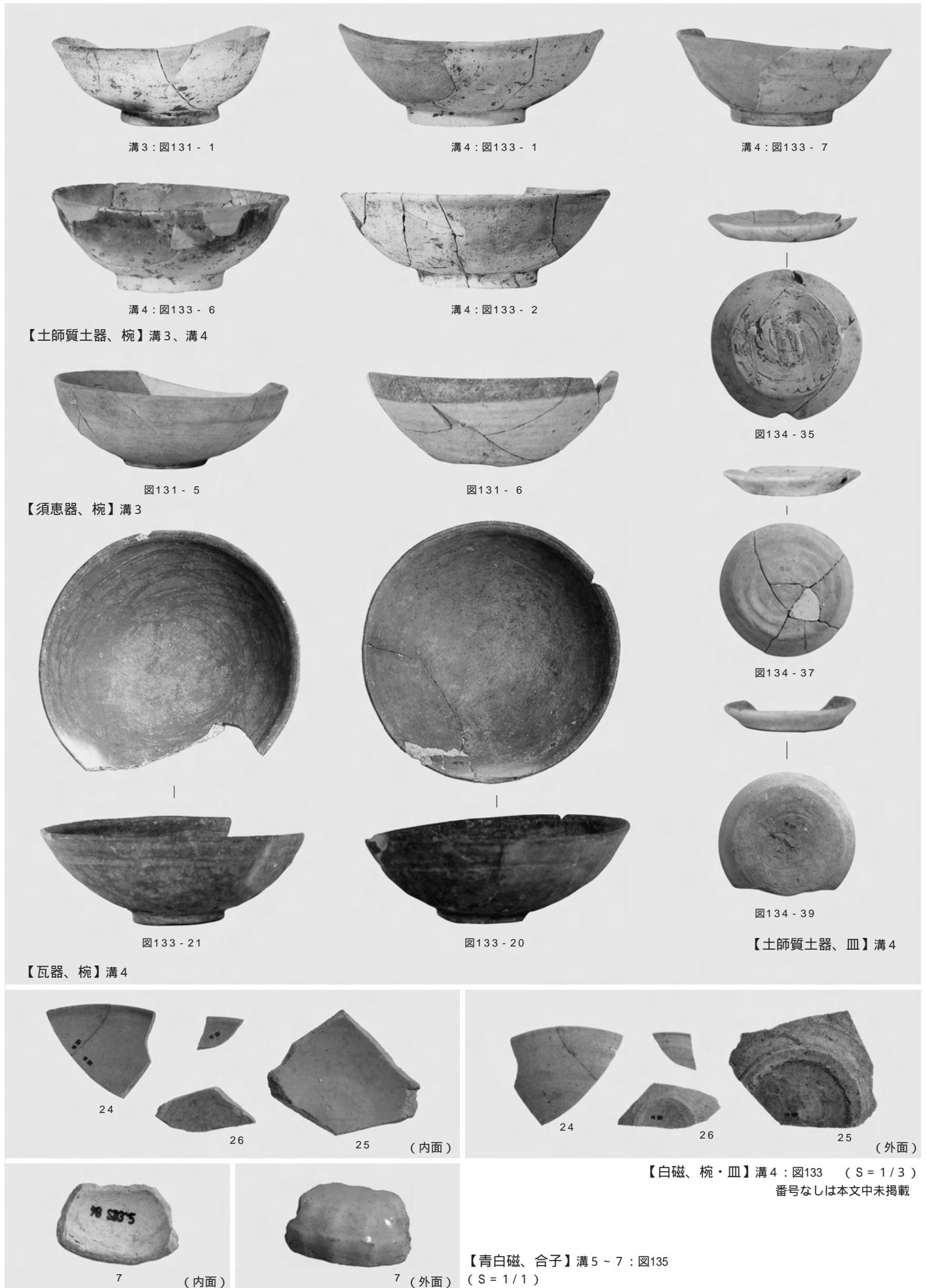




W 9 : 猿形木製品
W 11 : 棒状木製品
W 12 : 板材
W 14 : 曲物底板
W 15 : 椀

[図96]

図版12 古代末～中世の土器(1)・磁器



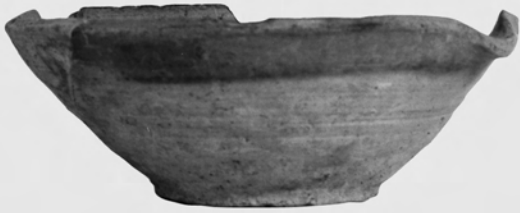


図134 - 40

【須恵器、鉢】溝4



図134 - 41



図134 - 42

【土師質土器、鍋】溝4

(S = 1/3)



T1 : 図126



T2 : 図126



T3 : 図134



T4 : 図134

【土錘】T1・2 : 溝1、T3・4 : 溝4



T5 : 図135

【土製支脚?】溝5～7



S1 : 図134



S2 : 図134

【砥石】溝4

(S = 1/2)