

Physics

Electricity & Magnetism fields

Okayama University

Year 1999

Optimal design of tank shield model of
transformer

Norio Takahashi*

Tetsuro Kitamura[†]

Makoto Horii[‡]

Jun Takehara**

*Okayama University

[†]Okayama University

[‡]Okayama University

**The Chugoku Electric Power Corporation, incorporated

This paper is posted at eScholarship@OUDIR : Okayama University Digital Information Repository.

http://escholarship.lib.okayama-u.ac.jp/electricity_and_magnetism/50

Optimal Design of Tank Shield Model of Transformer

Norio Takahashi, *Fellow, IEEE*, Tetsuro Kitamura, Makoto Horii, and Jun Takehara

Abstract—A tank shield model of transformer which is proposed by the Investigation Committee of IEE of Japan is analyzed. This is the model having the constraint that the maximum eddy current density should be less than a specified value. The automatic 3-D mesh generation technique for hexahedral element is investigated for the optimal design of such a model. It is shown that the reasonable results that satisfy the specified constraints can be obtained using the Rosenbrock's method within the acceptable CPU time. The experimental verification is also carried out.

Index Terms—Optimization, Rosenbrock's method, tank shield, transformers.

I. INTRODUCTION

It is important to examine the problems in applying the optimal design method to the practical design of magnetic devices. The "Investigation Committee on Highly Advanced Optimization Problems", IEE of Japan has proposed five kinds of benchmark models for comparing optimal design methods. The "tank shield model of transformer" is a benchmark model for reducing the volume of shielding plate and for constraining the eddy current density in the tank within a specified value.

In this paper, tank shield model is optimized using the Rosenbrock's method [1] and the finite element method (FEM). The effectiveness of the technique of generating 3-D mesh of hexahedral elements for the optimal design of practical model is discussed. The comparison with measurement is also shown.

II. TANK SHIELD MODEL OF TRANSFORMER

Fig. 1 shows the tank shield model of transformer. The tank plate is made of steel and the eddy current is taken into account (conductivity: 0.75×10^7 S/m). The shielding plate is made of grain-oriented silicon steel (grade(JIS): 30G140) in which no eddy current flows. The rolling direction of steel is the y -direction. The ampere-turns of the coil are 5484 AT(max) (12 A(max) \times 475 turns, 60 Hz). As the steel is not saturated, the phasor method (so-called $j\omega$ method) is applied in 3-D eddy current analysis by assuming that the magnetic characteristics of magnetic material is linear. The relative permeability of tank plate is assumed as 1000, and those in the rolling and transverse directions of silicon steel are assumed as 3000 and 30,

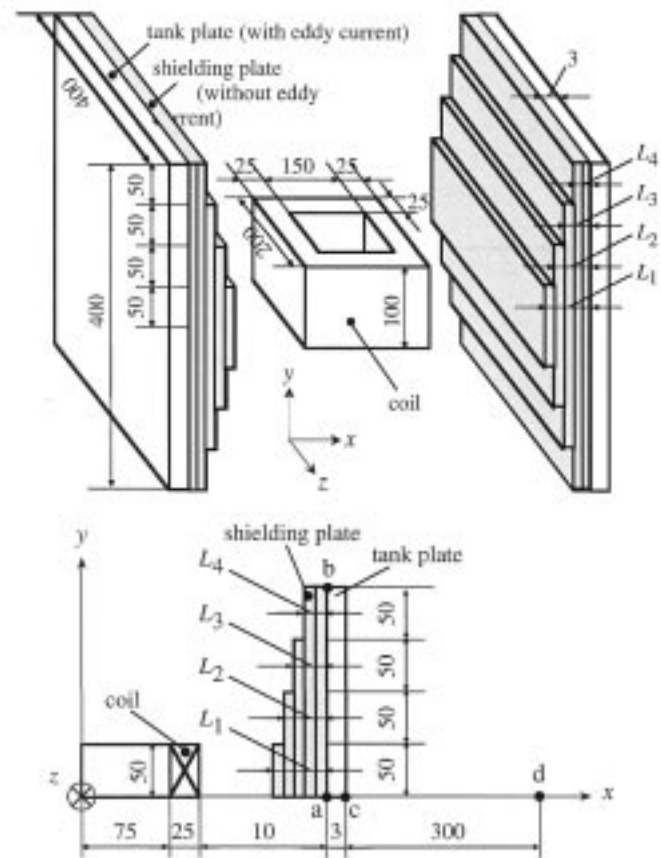


Fig. 1. Tank shield model.

respectively. The dimension of analyzed region is $1000 \text{ mm} \times 1000 \text{ mm} \times 1000 \text{ mm}$.

The dimensions L_1 – L_4 of the shielding plate should be determined so that the following objective function W becomes minimum, and the maximum value of the eddy current density J_{em} in the tank plate should be less than the specified value J_{emo} in order to avoid the local heating:

$$W = V + P \quad (1)$$

where V is the volume of shielding plate and P is the penalty function which are defined by

$$V = 10 \times (L_1 + L_2 + L_3 + L_4) \times 10^{-3} \quad [\text{m}^3] \quad (2)$$

$$P = \begin{cases} 0 & (J_{em} < J_{emo}) \\ J_{em} & (J_{em} \geq J_{emo}) \end{cases} \quad (3)$$

J_{em} is given by

$$J_{em} = \sqrt{|\dot{j}_{ex}|^2 + |\dot{j}_{ey}|^2 + |\dot{j}_{ez}|^2} \quad (4)$$

Manuscript received October 25, 1999.

N. Takahashi and M. Horii are with the Department of Electrical and Electronic Engineering, Okayama University 3-1-1, Tsushima, Okayama 700-8530, Japan (e-mail: {norio; horri}@eplab.elec.okayama-u.ac.jp).

T. Kitamura was with the Department of Electrical and Electronic Engineering, Okayama University 3-1-1, Tsushima, Okayama 700-8530, Japan. He is now with Kyocera Co., Ltd.

J. Takehara is with Technical Research Center, The Chugoku Electric Power Co., Inc., Higashi-Hiroshima 739-0046, Japan (e-mail: 477241@pnet.energia.co.jp).

Publisher Item Identifier S 0018-9464(00)06690-5.

TABLE I
ORTHOGONAL ARRAY

model no.	design variable (mm)				V (10^{-4} m^3)	J_{em} (10^6 A/m^2)
	L_1	L_2	L_3	L_4		
1	1	1	1	1	1.0	0.392
2	1	2	2	2	1.75	0.400
3	1	3	3	3	2.5	0.406
4	2	1	3	2	2.0	0.203
5	2	2	1	3	2.0	0.203
6	2	3	2	1	2.0	0.203
7	3	1	2	3	2.25	0.131
8	3	2	3	1	2.25	0.131
9	3	3	1	2	2.25	0.130
0	—	—	—	—	—	3.462

where $\text{dot}(\cdot)$ means the complex number. As J_{em} is of the order of 10^5 and V is of the order of 10^{-4} , (1) and (3) can be approximated as follows:

$$W = \begin{cases} V [\text{m}^3] & (J_{em} < J_{emo}) \\ J_{em} [\text{A/m}^2] & (J_{em} \geq J_{emo}) \end{cases} \quad (5)$$

The constraint of L_1 – L_4 is given by

$$0 < L_1, L_2, L_3, L_4 < 0.01 \quad [\text{m}] \quad (6)$$

III. METHOD OF OPTIMIZATION

Although the evolution strategy, the simulated annealing method etc. are suitable to obtain the global minimum of the objective function, the number of iterations becomes huge and not useful for 3-D optimization. Therefore, the Rosenbrock's method (RBM), which is the direct search method, is used for the optimization from the standpoints of the CPU time. The experimental design method (EDM, Taguchi's method) [2] is used to determine the upper value of eddy current density which is suitable for the optimization method of tank shield model and to determine the appropriate initial values. In this case, constraints are divided into three levels (1: low (2.5 mm), 2: medium (5.0 mm), 3: high (7.5 mm)).

The volume V of shielding plate and the maximum eddy current density J_{em} in the tank plate, which has nine patterns, are calculated from the orthogonal array (Nos. 1–9) shown in Table I. J_{em} calculated using 3-D FEM for the respective combinations of design variables L_1, L_2, L_3 and L_4 and the volume V of shielding plate are also shown in Table I. V and J_{em} at the models Nos. 4, 5 and 6 are nearly the middle values and the minimum (optimal) value of V may exist if the upper limit of eddy current density is determined as around these values. Then, the specified value J_{emo} of the maximum eddy current density is assumed as $0.24 \times 10^6 \text{ A/m}^2$.

Although $0.24 \times 10^6 \text{ A/m}^2 (=J_{emo})$ is not enough to heat the tank plate, it is assumed that the tank plate is overheated when J_{em} is larger than $0.24 \times 10^6 \text{ A/m}^2$ in order to become possible to carry out the experiment in laboratory.

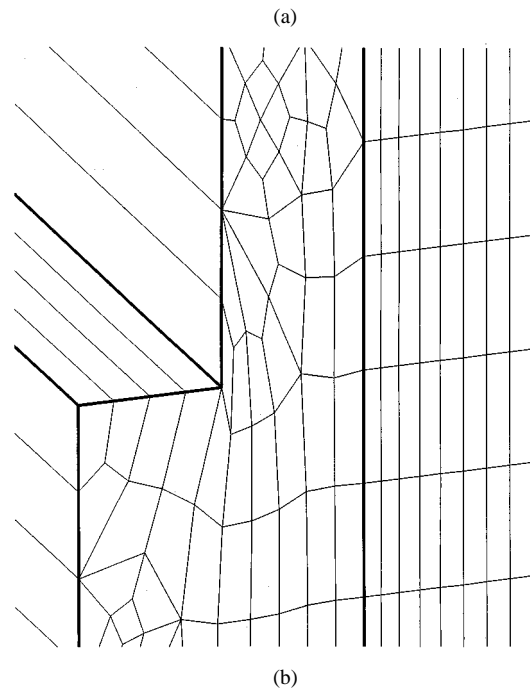
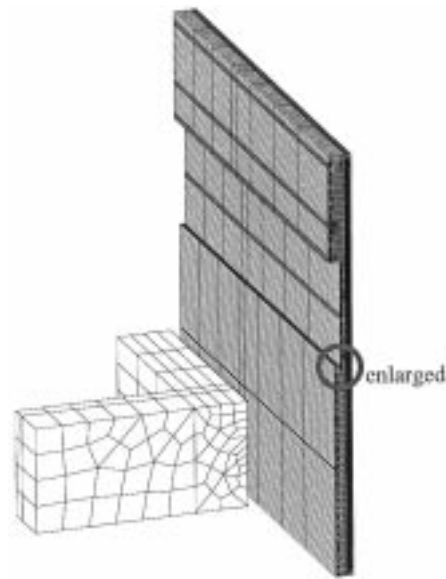


Fig. 2. 3-D mesh. (a) Whole view. (b) Enlarged view.

TABLE II
RESULTS OF OPTIMIZATION

		case A		case B	
		initial	optimal	initial	optimal
design variable (mm)	L_1	5.0	4.08	5.0	4.04
	L_2	5.0	4.51	5.0	3.25
	L_3	5.0	0.59	2.5	1.12
	L_4	5.0	0.12	7.5	0.14
$V (10^{-4} \text{ m}^3)$		2.0	0.93	2.0	0.85
$J_{em} (10^6 \text{ A/m}^2)$		0.203	0.247	0.203	0.248
number of iterations		51		28	
CPU time (h)		49.3		25.7	

computer used : VT-Alpha533 (SPECfp95:22.5)

The result without shielding plate is denoted as model no. 0 in Table I.

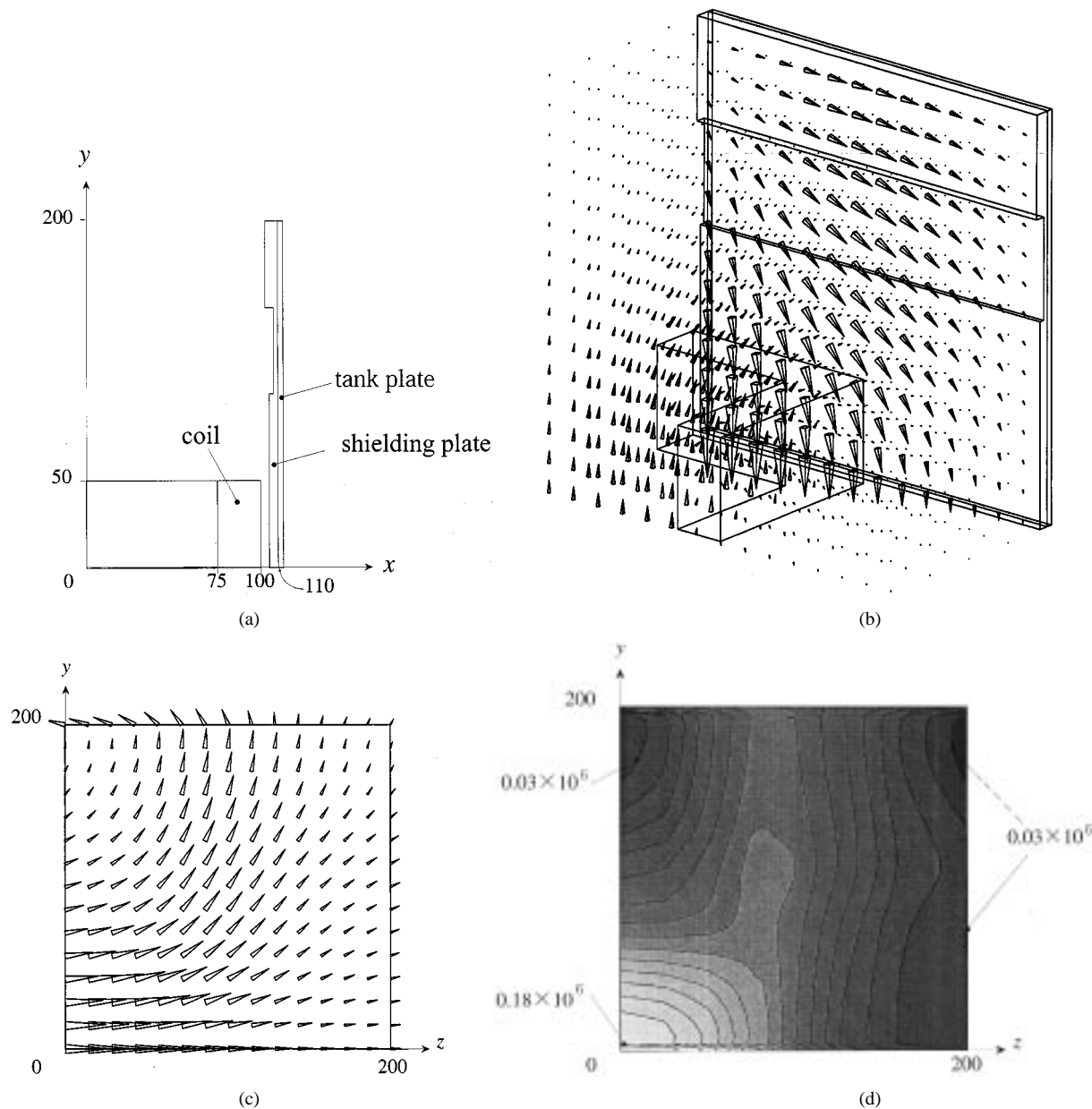


Fig. 3. Initial shape (case B). (a) Shape of x - y plane, (b) flux distribution ($\omega t = 0$ deg), (c) eddy current distribution on tank plate ($x = 110$ mm), (d) contour line of eddy current density ($x = 110$ mm).

IV. 3-D MESH GENERATION FOR OPTIMAL DESIGN

In the optimal design using the finite element method, the mesh must be changed according to the obtained design variables at each iteration.

As there is no universal automatic mesh generator for hexahedral elements [3], a technique for making the pile in the z -direction of 2-D mesh of quadrilateral element in the x - y plane as shown in the following process is introduced:

- a) The 3-D model is projected on the x - y plane as shown in Fig. 1(b). Delaunay method is applied to divide the region having the obtained shape (in principle, arbitrary shape correspond to design variables) into 2-D triangular elements. Then, the mesh of quadrilateral elements is obtained from these triangular elements as shown in Fig. 2(b). The skin depth region (0.75 mm) of iron steel

is subdivided into three-layers to obtain accurate results. In this model, the tank plate is subdivided into eight layers in the x -direction.

- b) The 2-D mesh of quadrilateral elements is piled up in the z -direction, then the mesh of hexahedral elements is obtained. The number of quadrilateral elements is about 3 200 in this case. The total number of hexahedral elements is about 30 000.

Although this mesh generator for hexahedral element is not universal, the optimization of the model having arbitrary shape in 2-D plane and having brick shape in the pile up direction (z -direction) is possible by utilizing this mesh generator.

V. RESULTS AND DISCUSSION

Table II shows results obtained using only Rosenbrock's method (RBM, case A) and the combined method of EDM

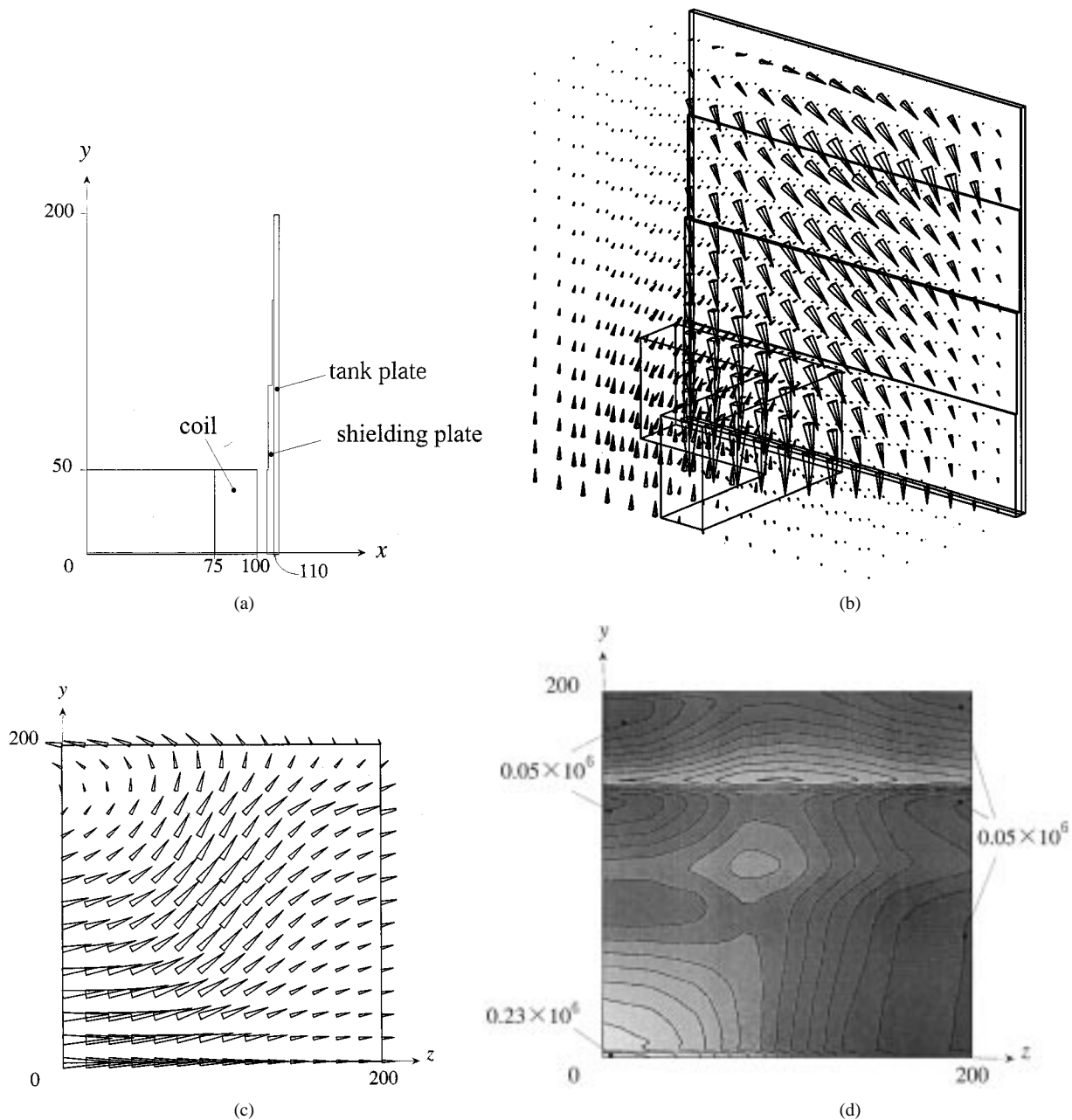


Fig. 4. Optimal shape (case B). (a) Shape of x - y plane, (b) flux distribution ($\omega t = 0$ deg), (c) eddy current distribution on tank plate ($x = 110$ mm), (d) contour line of eddy current density ($x = 110$ mm).

and RBM (case B) [4]. In the combined method (case B), the initial values of design variables for Rosenbrock's method are determined by using EDM. In this case, the variables of the model no. 5 in Table I is used as the initial value. If the change of design variables L_1 – L_4 becomes less than 0.1 mm in the process of direct search of RBM, it is judged that the final result is obtained.

The volume V in the case B of which the initial values are determined by EDM is smaller (about 9%) than that in the case A having the same initial values ($L_1 = L_2 = L_3 = L_4 = 5$ mm). And the CPU time in the case B is shorter than that in the case A. Therefore, the combined method of EDM + RBM may be effective.

Figs. 3 and 4 show the shapes, flux and eddy current distributions and contour lines of eddy current density at the initial

shape and the final shape in the case B. Figures (c) and (d) are the distributions on the surface of tank plate which is observed from the coil side. Figs. 3 and 4 and Table II denote that about 60% of the volume V of shielding plate is reduced, and the eddy current density can be limited within the specified value by the shielding plate.

Fig. 5 shows the comparison of the y -component B_y of flux density calculated by 3-D FEM along the line c-d in Fig. 1(b) and measured value without shielding plate. As this is the open circuit model, the error of the case without tank plate is larger than that of the case with tank plate. The result of nonlinear analysis for the case with tank plate is also shown. The CPU time of nonlinear analysis is about 120 hours using VT-Alpha600 (SPECfp95:27.0). As the difference between the linear and nonlinear analysis is small, the optimization

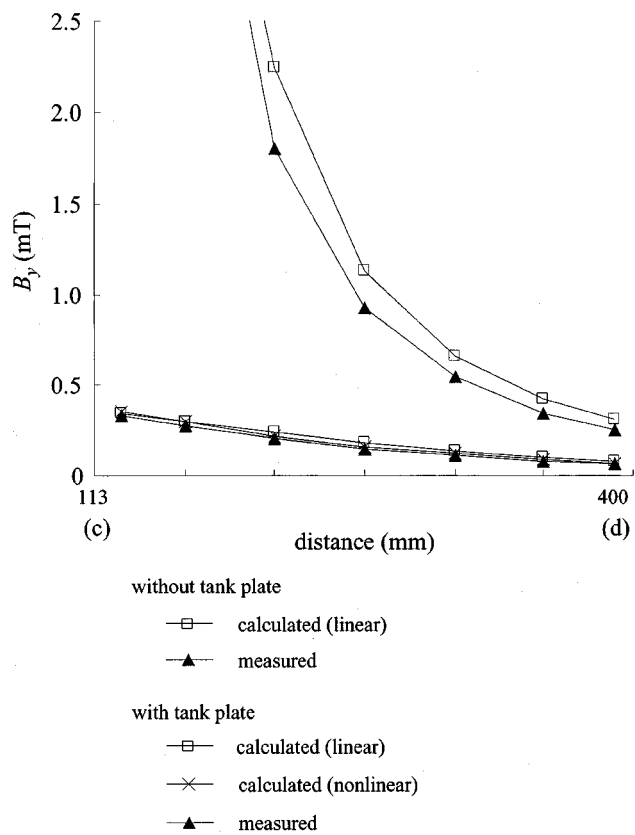


Fig. 5. Comparison with measurement (without shielding plate).

using linear analysis shown in Table II is acceptable from the practicable standpoint.

VI. CONCLUSION

The obtained results can be summarized as follows:

- a) It is shown that the technique for making the pile in the z -direction of 2-D mesh of quadrilateral element in the x - y plane is effective in 3-D optimization.
- b) The optimal dimension of shielding plate can be obtained by considering 3-D eddy current within the acceptable CPU time.

REFERENCES

- [1] D. M. Himmelblau, *Applied Nonlinear Programming*: McGraw-Hill, 1972.
- [2] D. C. Montgomery, *Design and Analysis of Experiments*: John Wiley & Sons, 1976.
- [3] A. Kameari, "Calculation of transient 3-D eddy current using edge-elements," *IEEE Trans. Magn.*, vol. 26, no. 2, pp. 466-469, 1990.
- [4] N. Takahashi and M. Natsumeda *et al.*, "Optimization of permanent magnet type of retarder using 3-D finite element method and direct search method," *IEEE Trans. Magn.*, vol. 34, no. 5, pp. 2996-2999, 1998.