



Bibliothèque numérique de l'enssib

Turning the library inside out, 4 au 7 juillet 2006
35^e congrès LIBER

The changing landscape of teaching and research

BULPITT, Graham
Director of Information Services

BULPITT, Graham. The changing landscape of teaching and research. In *35th LIBER Annual General Conference, Turning the library inside out, Uppsala, du 4 au 7 juillet 2006* [en ligne]. Format PDF.

Disponible sur : <<http://www.enssib.fr/bibliotheque-numerique/notice-1325>>

Ce document est « **tous droits réservés** ». Il est protégé par le droit d'auteur et le code de la propriété intellectuelle. Il est strictement interdit de le reproduire, dans sa forme ou son contenu, totalement ou partiellement, sans un accord écrit de son auteur.

L'ensemble des documents mis en ligne par l'enssib sont accessibles à partir du site : <http://www.enssib.fr/bibliotheque-numerique/>

The changing landscape of teaching and research

Graham Bulpitt
Director of Information Services





Aim

To set out the strategic context for developments in libraries

in order to

Inform the development of collections and information resources

Key issues

Challenges for universities

- more students and more diversity
- competition in higher education 'market'
- financial pressure
- employers' expectations
- quality and accountability



Top concerns of Library Directors

From SCONUL survey 2004

- compliance issues
- developments in electronic environment
- financial management, pressure on spending
- reconfiguration of sector
- institutional management issues
- staffing
- capacity and configuration of space

The higher education funding gap



Additional funding from student fees

University priorities for expenditure

- Bursaries and grants
- Staff salaries
- Investment in facilities

Student priorities for expenditure

- Libraries
- Campus security
- Staff salaries

Demand for higher education

- *Individuals*
 - personal aspirations
 - financial benefit
- *Employers*
 - demand for skilled employees
 - global competition
- *Government*
 - skills underpin knowledge economy
 - 50% participation target in UK

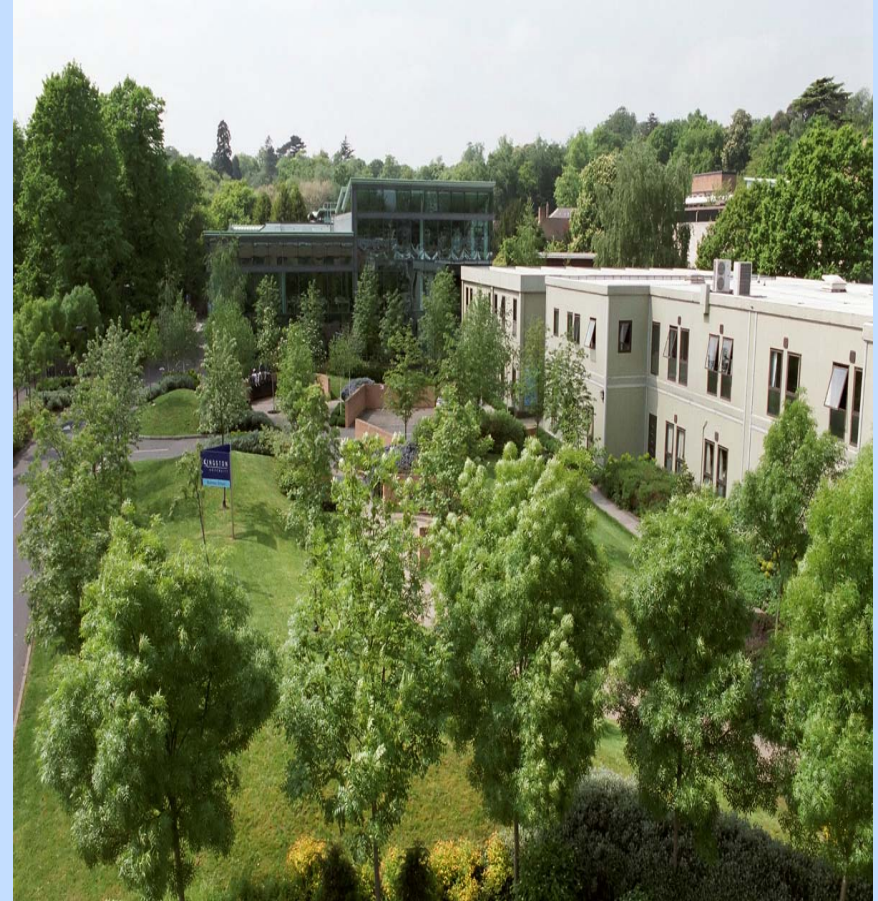
Lisbon target

Agreement made in March 2000 among the EU Heads of States and Governments to make the European Union

'the most competitive and dynamic knowledge-driven economy by 2010'.

Global competition

- League tables
- Provision in new economies
- International recruitment patterns
- Global alliances
- Overseas campuses
- Distance learning



Quality and accountability

[Questions](#)[Survey](#)[Downloads](#)[Links](#)[Contact Us](#)[Cymraeg](#)

Welcome to the National Student Survey

The National Student Survey (NSS) is an opportunity for final year undergraduates to feedback on their academic experience. The results will be used to help future students to choose courses that best suit their needs and interests. This is the second year of the NSS, the first being conducted last year in 2005. The 2005 results have been published on the [Teaching Quality Information \(TQI\) website](#).

The survey is being conducted by [Ipsos MORI](#), an independent market research agency, and has the full support of the [National Union of Students \(NUS\)](#).

Final year students will receive an e-mail from Ipsos MORI during January or February 2006 inviting them to complete the survey online. However, if you are in your final year of an undergraduate course you can complete the survey now by clicking on the link [Start Survey](#). You will be asked for some personal data in order to verify that you are eligible to take part. The survey is straightforward and should take no more than five minutes to complete.

This website has been designed to be compatible with assistive technologies and provides responses to [Frequently Asked Questions](#) on the survey. If you have a query which is not answered under this section please [Contact Us](#) at Ipsos MORI.



Review reports

Kingston University

Institutional level

Institutional audit

March 2005 - RG 139 08/05 [HTML](#) | [PDF](#)
Status: Audit complete

Audit Report

January 2002 - IRD690 [HTML](#)

Overseas

Asian Aviation Centre (Sri Lanka)
May 2004 - RG 124 06/05 [HTML](#) | [PDF](#)

[About us](#)

[News & events](#)

[Reviews & reports](#)

- [Reports listed A-Z by institution](#)
- [Reports listed A-Z by subject](#)
- [Access to HE reports](#)
- [Major Review of healthcare programme reports](#)
- [Overseas reports](#)
- [How to order](#)

- [Academic review](#)
- [Access to higher education](#)
- [Collaborative provision audit](#)

The Sunday Times University Guide 2005



Widening access without diluting quality

Teaching excellence and a vote of confidence by its own students combine to make Durham our university of the year

Make an informed choice



Follow the money to ease the pain of tuition fees

Universities plan to give £350m in grants and bursaries to help cushion student debt, reports Judith O'Reilly

First study the choices to select the best campuses and courses

Online Extra: The head teachers' verdicts

Click for The Sunday Times university league table

1-30

Click for The Sunday Times university league table

31-60

Click for The Sunday Times university league table

61-90

Click for The Sunday Times university league table

91-119

TABLES AND DATA

- ◆ Excellence over past years
- ◆ Admissions
- ◆ Student satisfaction
- ◆ Graduates / jobs
- ◆ Degrees / Research / Sport

THE SUNDAY TIMES UNIVERSITY OF THE YEAR

DURHAM

Shortlisted:

Bath East Anglia

Hull Loughborough

BASED ON LEAGUE TABLE POSITION

BEST UNIVERSITY

Cambridge

BEST NEW UNIVERSITY

Oxford Brookes

BEST HIGHER EDUCATION COLLEGE

Queen Margaret University College

BEST IN LONDON

Imperial College

BEST IN SCOTLAND

Edinburgh

BEST IN WALES

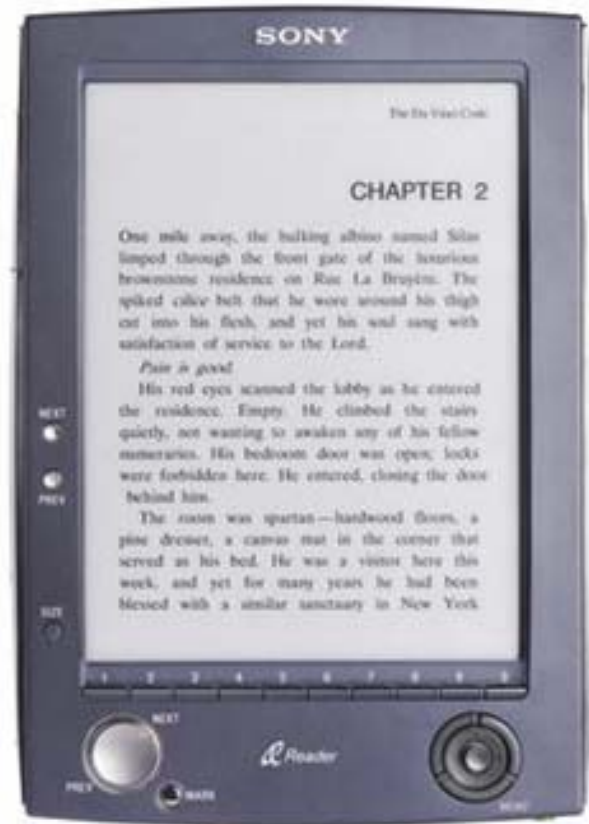
Cardiff

Technological developments

The Sony Reader

“Will Reader do for books what iPod did for music?”

Times, 4 February 2006, p 64.



*Courtesy of Goodman Media
International*



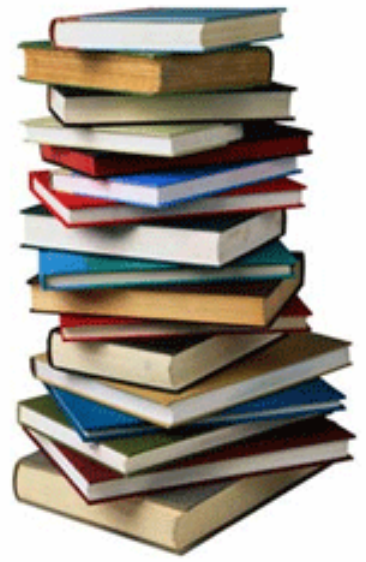
All the world's books at your fingertips

In May 1961, JFK said that he was going to put a man on the moon. The idea was unthinkable at the time, but within the decade, the goal was achieved.

Google Book Search (books.google.com) is our **man on the moon** initiative. We see a world where **all books are online and searchable***. How exactly will this be done? How long exactly will it take? We aren't sure, but **we're committed to making it happen**.

Imagine this program's potential impact on education and research. On how our children discover books. On writing and publishing. On how all of us find and use information.

Do we need your help? Yes.



Community tools

- Blogs
- Wikis
- Discussion forums
- Instant messaging
- Newsfeeds



Learning and teaching

Changes in student expectations

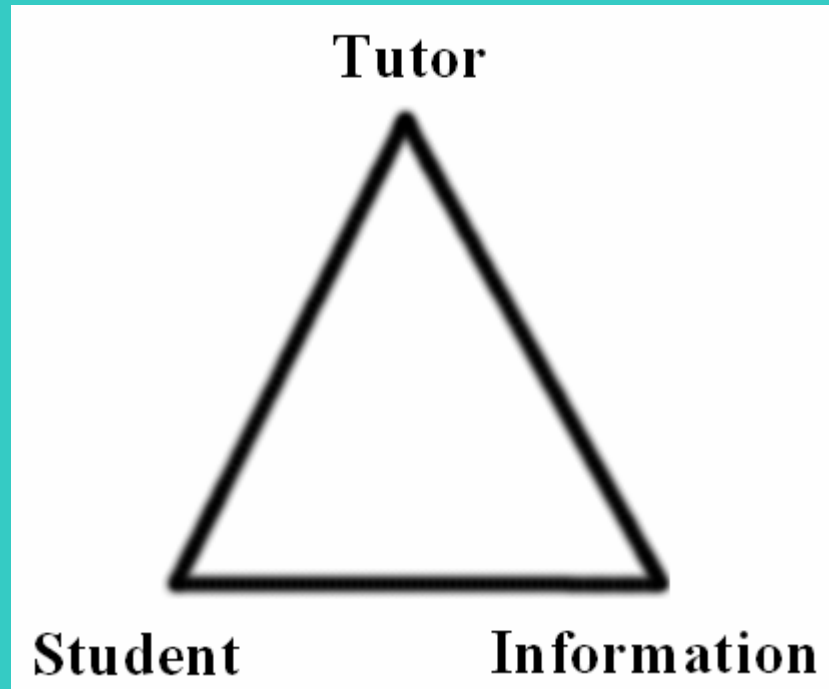


- Students behaving as consumers
- The need to actively engage students in learning
- The demand for flexibility in when and where people study
- New generations of students and their use of technology and multimedia
- The learning needs of each individual

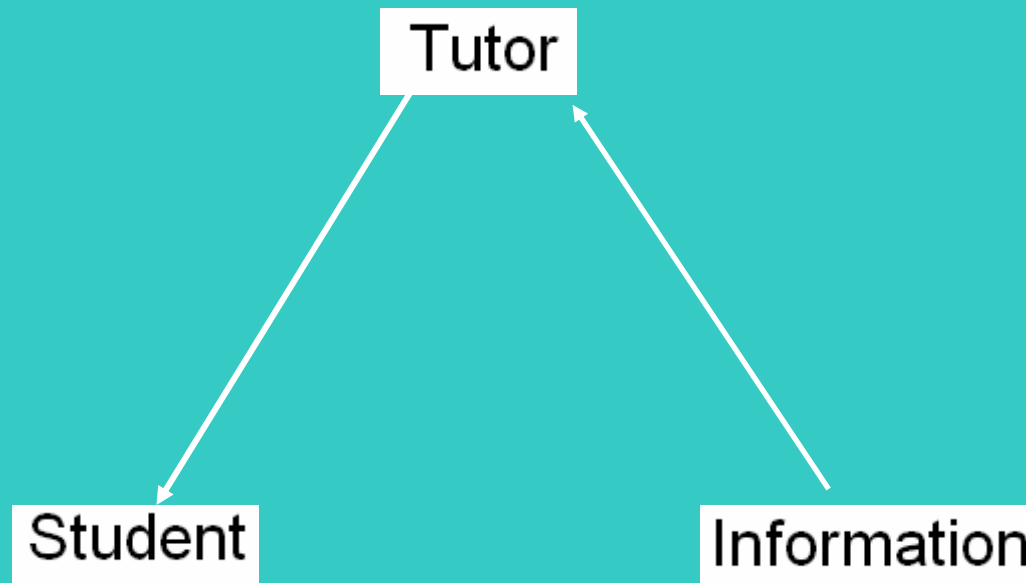
A distinctive style of learning?

The focus on the learning experience of the student is a key feature of British education. It nurtures the critical and creative skills which underpin the UK's most successful industries. Books and other information resources play a key role in this educational model, and this places libraries at the heart of the learning process.

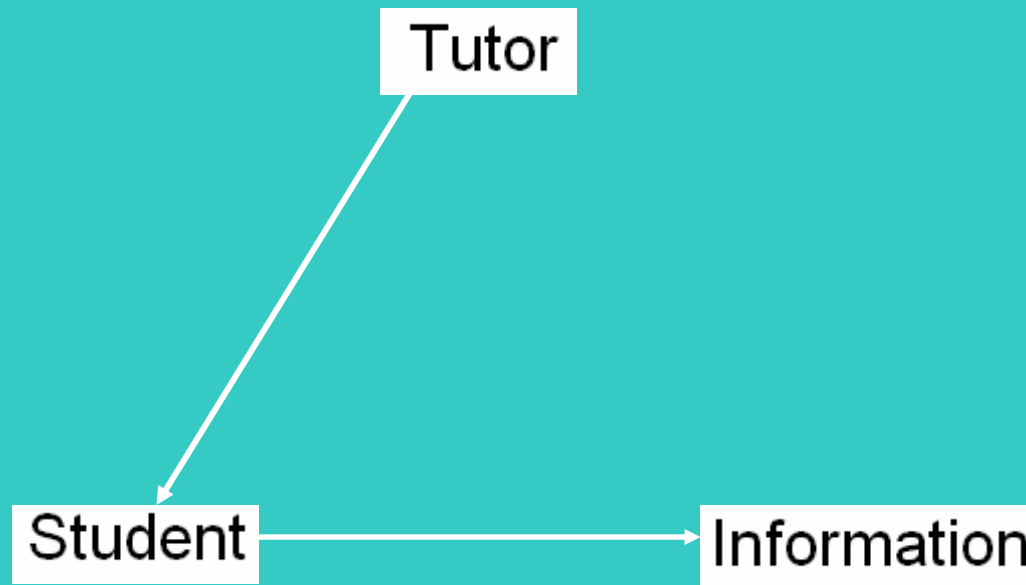
A learning and teaching model



Traditional teaching model



Independent learning model



“Perhaps eventually we will face a world where reading and writing are almost obsolete. If all facts are available to everyone, what will be the need to learn?”

Baroness Greenfield, 2005.

Virtual learning environments

Tools

- Announcements
- Calendar
- Tasks
- View Grades
- Personal Information

Links

- ETU Website
- Staff Overview
- LMS Position Paper
- Student Guide
- Past Exam Papers

Study Support

Welcome, GRAHAM

[Contents](#) [Layout](#)

My Organizations

Organizations in which you are participating:

- [Blackboard For Staff](#)
- [Kingston 10 Years Ahead: First Thoughts](#)

My Modules

Courses you are teaching:

- [L&MS Intranet \(LR030\)](#)

Announcements

- [Message of the Day](#)

Staff Information

Improved Blackboard Performance

We have achieved a stable and much improved response-time from our Blackboard system, after applying a whole range of fixes and fine-tuning the back-end database.

One of the fixes involves running a script every half an hour (25 and 55 minutes past the hour) to clear out unused sessions on the system. This script causes a small dip in performance (for a couple of minutes). However, we are

The virtual learning environment

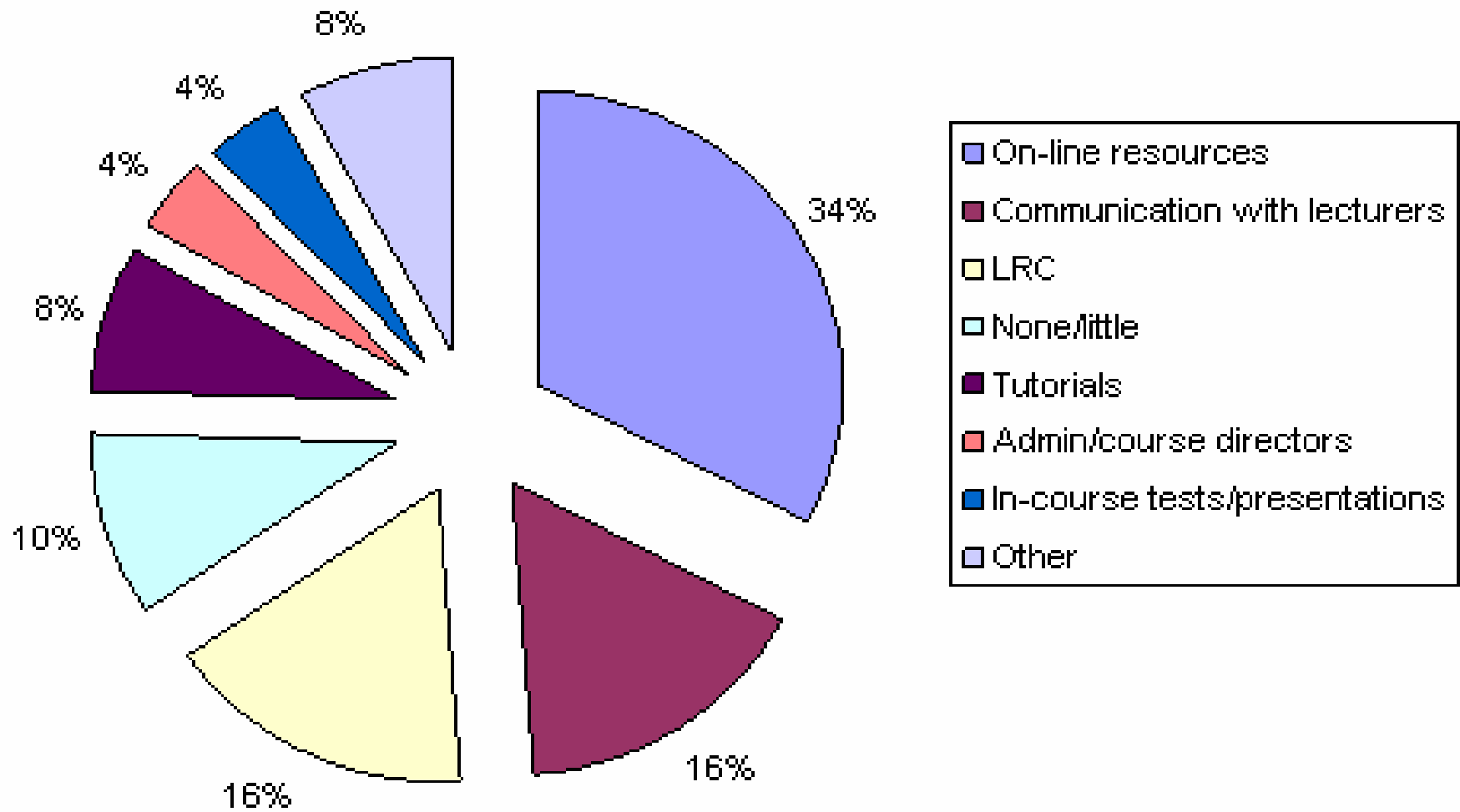
*“ The aim is to create an electronic environment which replicates all the facilities of the real environment...
...allowing students to move seamlessly between the two...in a way which meets their own needs.”*

The eCampus



- Course information
- Enrolment
- Fees payment
- Learning materials
- Information resources
- Interaction with staff
- Contact with students
- Assignments
- Assessment
- Feedback
- Certification

Academic support found most useful



“It is the view of the group - and research studies reinforce this - that effective learning takes place in a social environment.”

Foresight. The Learning Process in 2020
Task Force.

Research

Research trends

- highly competitive
- differences between disciplines
- evidence-based work
- multi and cross disciplinary projects
- eResearch
- shifts in professional boundaries
- links with teaching, innovation

Libraries and research

Current developments

- Training programmes for researchers
- Research Information Network
- SCONUL Research Extra
- 'Access' funding
- Collaborative storage projects
- Digital legal deposit

“..by the year 2020, 40% of UK research monographs will be available in electronic form only...”

Lynne Brindley, British Library

An enhanced role for librarians

Given the increasing importance of evidence – drawn from a range of inter-disciplinary and digital sources which require specialist searching and curation skills – it is time for the information professional to take their place as a full member of the research team.

Kingston University London

kuir [Home](#) | [About](#) | [Browse](#) | [Search](#) | [Register](#) | [User Area](#) | [Help](#)

Design feasibility study, concept design and detail development for a solar powered illuminated bus stop for London now being installed throughout London / commissioned by London Buses Ltd.

Elson, John (2003) *Design feasibility study, concept design and detail development for a solar powered illuminated bus stop for London now being installed throughout London / commissioned by London Buses Ltd.* JEDCo Product Designers Ltd. Product.

Full text available as:



Welcome to academici.

- ▶ Start page
- ▶ About academici
- ▶ Benefits of academici
- ▶ User testimonials
- ▶ Registration

academici: Join

Register now free of charge and without obligation

[Sign up](#)

Login for members:

User name

Password

Login automatically on this computer

[Forgot your login data?](#)

[Log in](#)

Welcome to "academici. Knowledge networks". Here, you can extend your personal and academic networks.

Good reasons to enroll:

academici is successful, because it combines the interests of

- knowledge workers who are interested in their special interest areas, topics and problems
- people who are interested in relating to others, sharing information and knowledge, but also friendship and life
- institutions who would like to support and enhance their knowledge workers and all the other people dealing with them and their institutions
- companies who spend billions for R&D, but could save millions if they could easier link up with researchers:
- secure data protection, no advertising, no direct sales, no spam

academici. Knowledge networks

academici is available in



[English](#)



[Deutsch](#)



[Español](#)



[Français](#)



[Italiano](#)



[Português](#)



[Nederlands](#)



[Svenska](#)



[中文](#)



[日本語](#)



[한국어](#)



[Русский](#)



[Polski](#)

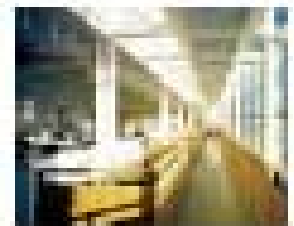
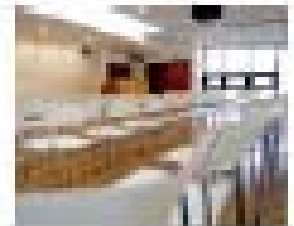
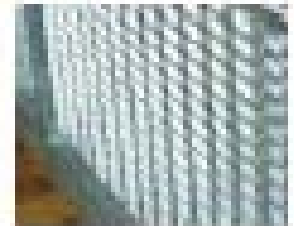
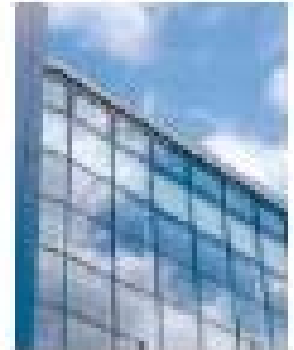


[Magyar](#)



[Türkçe](#)

University of Sheffield Informatics Collaboratory of the Social Sciences

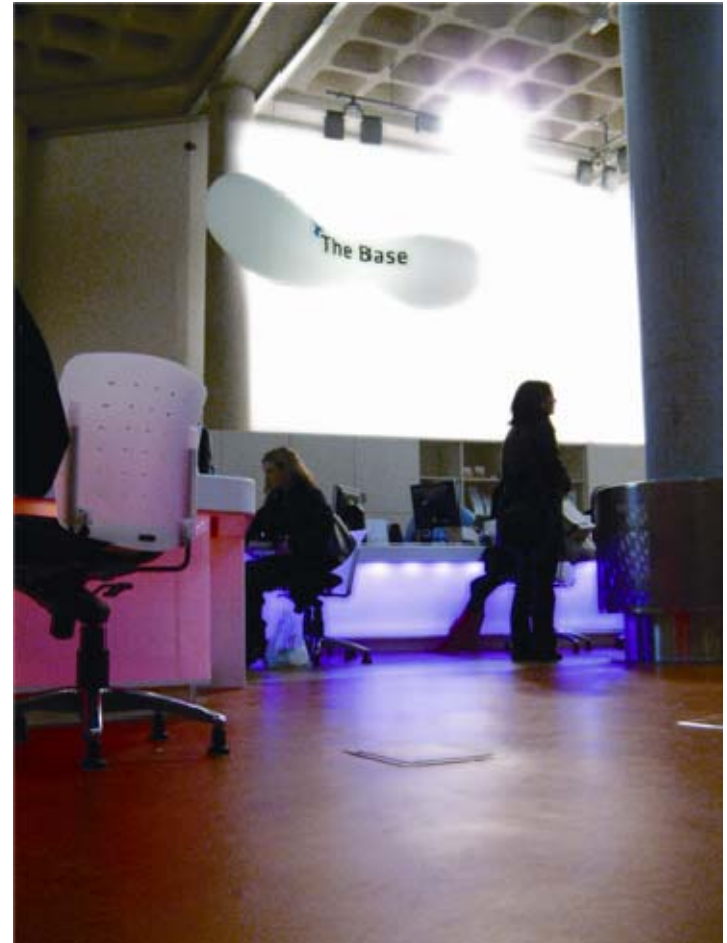


IKMZ, Brandenburg Technical University, Cottbus



Saltire Centre, Glasgow Caledonian University

- Student Services Mall
- 600 seat learning café
- Learning Support
- Course support
- Library provision
- Computing



A glowing lightbulb is centered against a dark blue background. The lightbulb is illuminated from within, creating a bright yellow-white glow. The word "idea" is written in a bold, black, sans-serif font across the middle of the bulb's glass. The base of the bulb, showing the screw threads, is visible at the bottom.

idea

The Idea Store



- public library
- computing facilities
- advice centre
- adult education
- homework club
- exhibition and performance space
- café, crèche



Research agenda

- What are student expectations of their experience at university?
- How do students interact with electronic learning environments?
- What are the changing needs of researchers working in libraries?
- What impact will these changes have on the provision of information resources?

g.bulpitt@kingston.ac.uk