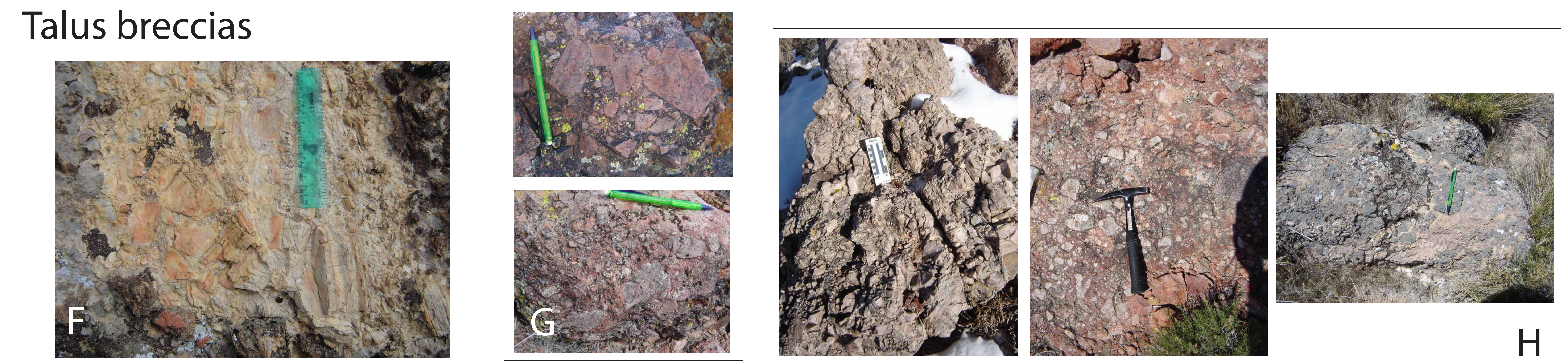


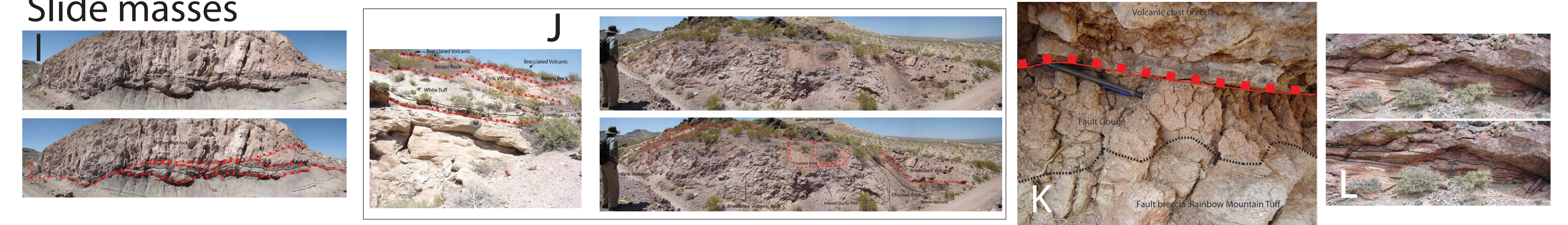
Sedimentary conglomerates or breccias



Talus breccias



Slide masses



Tectonic/fault related breccias



Plate 2: Photo mosaic of the variety of breccia and conglomerate deposits in the field area discussed in chapters 2, 3, and 4. Sedimentary conglomerates and breccias include the following photos: A is a basal Oligocene conglomerate, B is the Post-Paintbrush breccia exposed in Fluorspar Canyon, C is the Sedimentary sandstone and breccia of the NBH, D is a layer of inter-finger breccias within the Pre-Rainier Mesa rhyolite, E is the Rainbow Basin conglomerate. Talus breccias include the following photos: F is the carbonate clast breccia in the western Fluorspar Hills, G are monolithic breccias deposited after the first extensional pulse in the NBH. The top image is Paintbrush-clast breccia. The bottom image is Bullfrog-clast breccia, H are monolithic breccias deposited after the second extensional pulse in the NBH. The photo on the left is Zabriskie-clast breccia, the middle photo is Rainier Mesa-clast breccia, and the right photo is Wood Canyon-clast breccia. Slide masses in the SBH include photos: I is a massive block within the Rainbow Basin conglomerate, J is a series of slides and detachment blocks within the Rainbow Mountain group. The photo on the left contains a penecontemporaneous fold and a series of later slides. The photo on the right is approximately 10 meters east and is a series of slides exposed in a railroad cut. K is a low angle structure (detachment) accommodating the movement of the overlying breccia, and L is a slide block within the Rainbow Mountain group. Tectonic or fault related breccias include photos: M is brecciated Bonanza King in the FC-BH detachment fault zone in the Fluorspar Hills, N is microbrecciation of the Devonian footwall of the FC-BH detachment, and O are Paleozoic-clast breccias formed in a wedge between the upper and lower plates of the FC-BH detachment in the SBH. See text for more detailed descriptions.