

# A Technique for Portacaval Transposition

THOMAS E. STARZL, M.D., GEORGE W. BUTZ, JR., M.D., AND  
DAVID H. MUNGER, B.S., *Northwestern University Medical School*

Since its description by Child<sup>1</sup> in 1953, portacaval transposition has proved to be a versatile tool for studying various aspects of hepatic and gastrointestinal physiology. With this preparation, the effects of diverting the splanchnic drainage away from the liver can be assessed without the complicating factor of deterioration of hepatic function.<sup>4</sup>

Two factors have reduced the experimental value of portacaval transposition. The first of these involves the ligation of tributary vessels to the portal vein or vena cava<sup>1</sup> in order to obtain greater mobilization for the anastomoses. The resultant alteration of the adrenal, pancreatic or duodenal venous drainage could influence various parameters to be measured. The second factor involves technical difficulties<sup>5</sup> which are related to the need for portal obstruction during transposition of the vessels.

In the present study, a simple technique is outlined with which acute portal or caval hypertension is prevented during operation, and with which none of the portal or vena caval branches are ligated. A high rate of success has been attained, without transfusions, intravenous fluid therapy or other care.

## TECHNIQUE

Twenty-two mongrel dogs, from 13 to 25 kg., were anesthetized with pentobarbital sodium. An upper midline incision was made (Fig. 1, A). The vena cava above the adrenal veins was mobilized. The portal vein was cleaned and mobilized above the entrance of the pancreatic vein (the highest tributary of the portal vein) to the bifurcation in the liver hilus. The proximal 1 cm. of the pancreatic vein was also mobilized.

*From the Department of Surgery, Northwestern University Medical School, Chicago.*

This work was aided by a grant from the American Heart Association and Grant A-3176 from the U.S. Public Health Service, National Institutes of Health, Bethesda, Maryland. Dr. Starzl is a Markle Scholar.

Paper submitted for publication April 17, 1961; accepted May 5, 1961.

An 8 to 10 mm. portacaval anastomosis was performed as far below the pancreatic vein as possible (Fig. 1, B) without excision of tissue from either vessel wall. The femoral-jugular external polyethylene bypass described by Kaupp<sup>2</sup> was then inserted and the portal vein and inferior vena cava occluded with Potts clamps above and below the proposed site of transposition (Fig. 1, C).

The anastomosis of the distal portal vein to the proximal vena cava was performed first with 6-0 continuous arterial silk (Fig. 1, D). The distal vena cava was then connected to the proximal portal vein (Fig. 1, E). The posterior row was placed from within the vessels. At first, these anastomoses were difficult because of the short segments of vessels and the confined space of the operative field. After a few trials, these difficulties were eliminated.

After completion of transposition, the external polyethylene bypass was removed and the external jugular and femoral veins ligated. The preliminary side-to-side portacaval shunt was drawn into the jaws of a partially occluding Potts clamp, divided, and closed with continuous 6-0 silk (Fig. 1, E).

## RESULTS

The external bypass which decompressed both the portal vein and vena cava afforded excellent protection to the gastrointestinal tract. The bowel remained pink during transposition of the vessels. Transfusions or fluids were not given during or after surgery. The dogs were allowed to eat the day after operation, and no subsequent care was required.

In the developmental stages of this technique, difficulties were encountered with the anastomoses, which had to be performed with short venous cuffs. In three of the first five experiments, portal anastomotic thrombosis occurred. Subsequently, 17 consecutive transpositions were performed with long-term survival.

The  
tion v  
and a  
dogs v  
for tw  
dogs  
weigh  
At a  
three  
the ar  
and th  
no an  
bosis  
of fem  
into ti  
volved  
no gr  
tract w

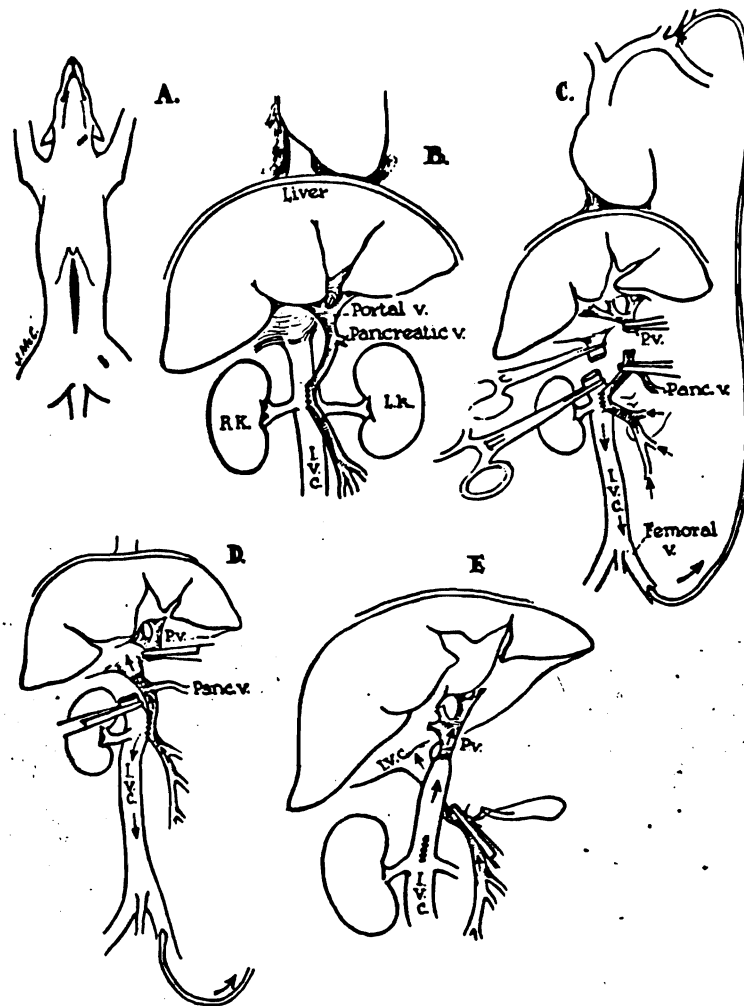


Fig. 1. Steps in the technique of portacaval transposition.

s was  
in as  
from  
ternal  
s was  
ferior  
e and  
(Fig.

to the  
th 6-0  
distal  
ximal  
v was  
these  
short  
of the  
ulties

ernal  
e ex-  
The  
was  
Potts  
is 6-0

both  
llent  
owel  
the  
yiven  
ed to  
uent

ique,  
asto-  
short  
ents,  
-abse-  
per-

1961

The studies for which the portacaval transposition was performed were carried out from one and a half to eight weeks after operation, and the dogs were sacrificed. Weight loss was consistent for two or three weeks after operation, but all the dogs followed for one month or longer gained weight up to or toward the preoperative level.

At autopsy, the anastomoses were examined. In three of the first five animals, clots had formed at the anastomosis between the distal portal vein and the proximal vena cava. In the last 17 dogs, no anastomotic thrombosis was present. Thrombosis of the iliac vein was present above the site of femoral vein ligation, sometimes extending into the lower vena cava, but edema of the involved leg was not seen. In the chronic animals, no gross abnormalities of the gastrointestinal tract were found.

DISCUSSION

Apparently, most of the difficulties during and after portacaval transposition have been due to shock. Transfusions have generally been necessary.<sup>1, 5</sup> Summers<sup>5</sup> has reported that irreversible shock with hemorrhagic gastroenteritis was commonly seen even when the technique of operation had reached a high degree of perfection. He suggested that exposure of the diverted adrenal venous flow to the detoxifying influence of the liver caused a state of adrenal insufficiency. In support of this contention was the fact that pre- and postoperative steroid therapy resulted in a striking reduction in operative mortality.<sup>5</sup>

The uniform success with the method described in the present study and further experience in Eiseman's laboratory<sup>2</sup> provide evidence that acute adrenal insufficiency does not occur as

a result of the transposition per se. Rather, it suggests that the problems of fluid therapy and hypotension are the result of depletion of the circulating blood volume by sequestration in the acutely obstructed portal and caval venous beds, and by continued fluid loss in these areas even after the obstruction is relieved. When such obstruction is avoided during the operation, as has been described, no shock problems are encountered, and the operative mortality approaches zero.

#### SUMMARY

A technique is described for portacaval transposition in which portal or inferior vena caval hypertension is prevented by a decompressing external bypass during the period of vascular anastomoses. Successful preparations were uniformly attained without transfusions or fluid therapy, and with a minimum of postoperative care. The method allows transposition without ligation of tributary branches of either the vena cava or portal vein.

#### ADDENDUM

Recently, an alternative technique for transposition has been used, based on the observation by

Medins and Laufman<sup>6</sup> of the protective action of hypothermia during mesenteric vein occlusion. The animals are cooled to 30° C. and the transposition performed as described above with omission of the portacaval shunt and external bypass. In experiments in which it is desirable to leave intact femoral veins for subsequent testing, this modification is the method of choice.

#### REFERENCES

1. Child, C. G., III, Barr, D. B., Holswade, G. R., and Harrison, C. S.: Liver regeneration following portacaval transposition in dogs. *Ann. Surg.*, 138:600, 1951.
2. Eiseman, B.: Personal communication.
3. Kaupp, H. A., Jr., and Starzl, T. E.: The use of an external by-pass in experimental total hepatectomy. *Surgery*, 48:330, 1960.
4. Silen, W., Mawdsley, D. L., Weirich, W. L., Harper, H. A., and McCorkle, H. J.: A comparison of liver function following Eck fistula and porta-caval transposition. *Surg. Forum*, 7:425, 1956.
5. Summers, W. B., Malette, W. G., and Eiseman, B.: Metabolic effects of transposition of the portal vein and inferior vena cava. *Surg. Forum*, 7:429, 1956.
6. Medins, G., and Laufman, H.: Hypothermia in mesenteric arterial and venous occlusions. *Experimental study. Ann. Surg.*, 148:747, 1958.

T  
H  
AI  
DI  
AF  
OV  
T  
pat  
ren  
pot  
ven  
tion  
is t  
a p  
pas  
acti  
hor  
Oth  
effo  
gog  
tion  
was  
and  
tha  
Tre  
from  
allc  
blo  
and  
blo  
of T  
hyp  
affe  
tion  
and  
site  
Fr  
sota  
T  
Jay  
U.S.1  
Pa  
cept  
JSR