

The Copenhagen Diagnosis

Updating the World on the Latest Climate Science



The Copenhagen Diagnosis, 2009: Updating the World on the Latest Climate Science.

Ian Allison, Nathan Bindoff, Robert Bindaschadler, Peter Cox, Nathalie de Noblet-Ducoudre, Matthew England, Jane Francis, Nicolas Gruber, Alan Haywood, David Karoly, Georg Kaser, Corinne Le Quéré, Tim Lenton, Michael Mann, Ben McNeil, Andy Pitman, Stefan Rahmstorf, Eric Rignot, Hans Joachim Schellnhuber, Stephen Schneider, Steven Sherwood, Richard Somerville, Konrad Steffen, Eric Steig, Martin Visbeck, Andrew Weaver.

The Copenhagen Diagnosis

Updating the World on the Latest Climate Science



<http://www.copenhagendiagnosis.com/>

Figure 1: Global CO₂ Emissions from Fossil Fuels

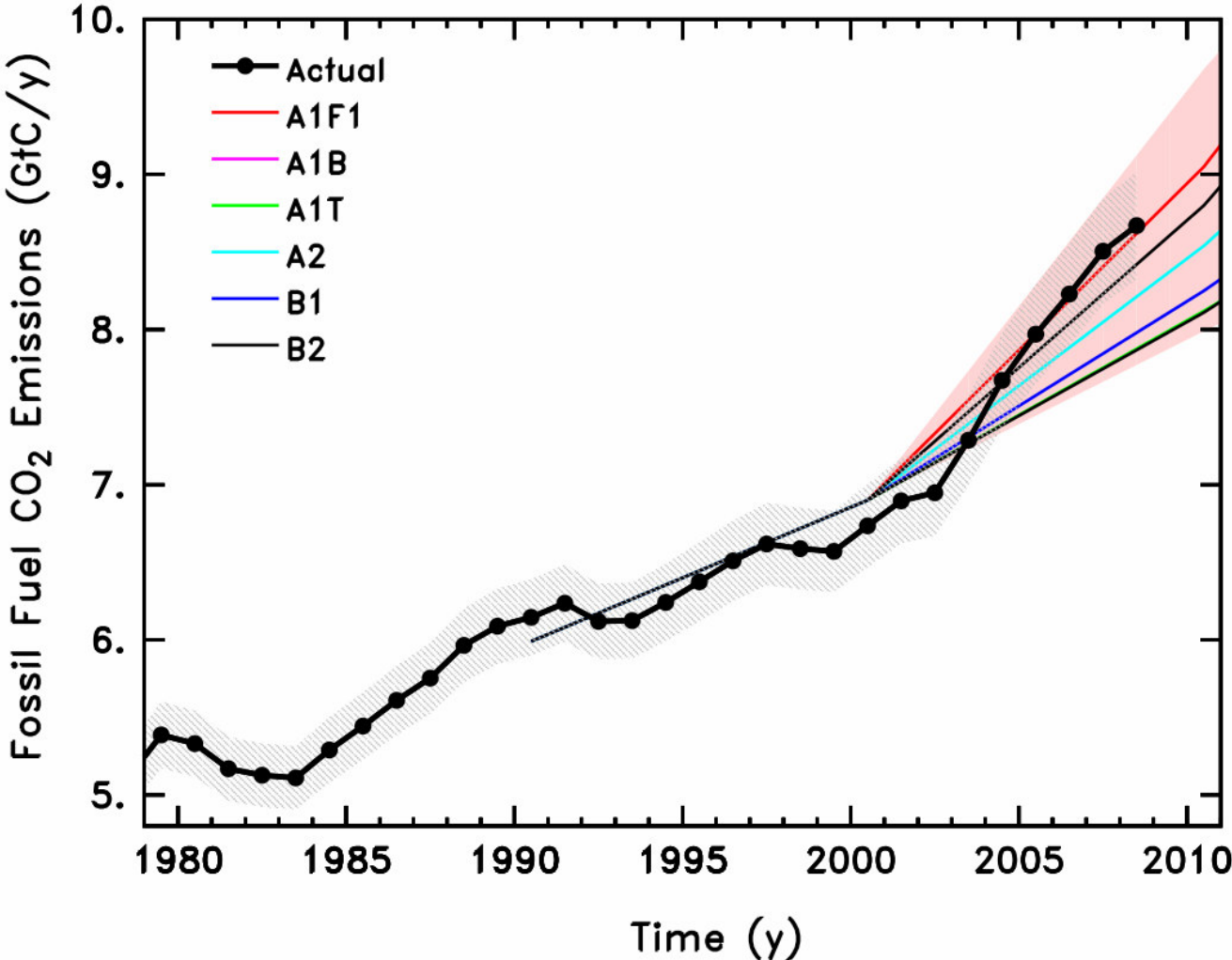
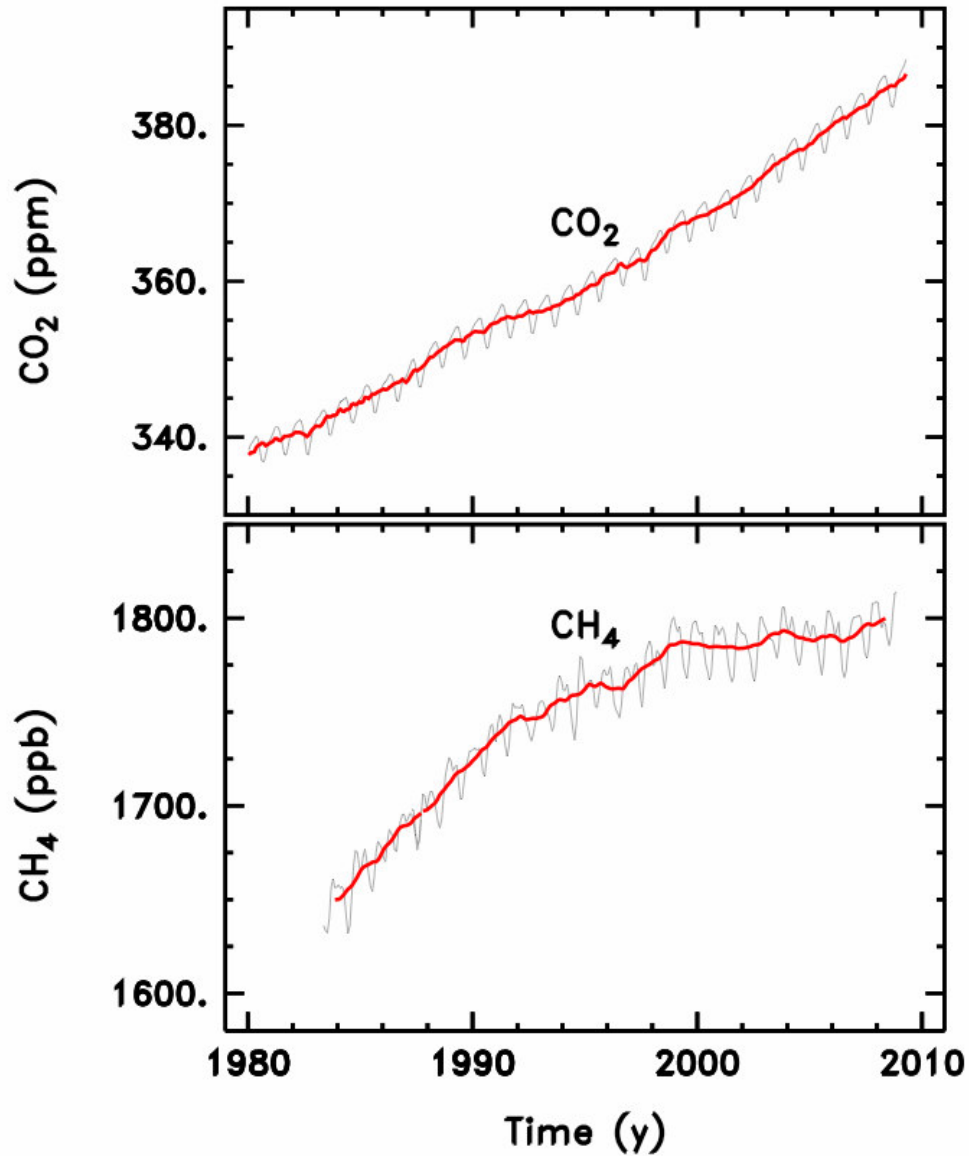


Figure 2: Atmospheric concentration of carbon dioxide (CO_2) and methane (CH_4)



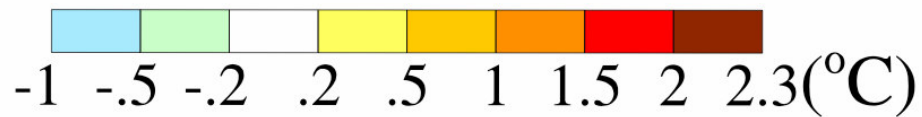
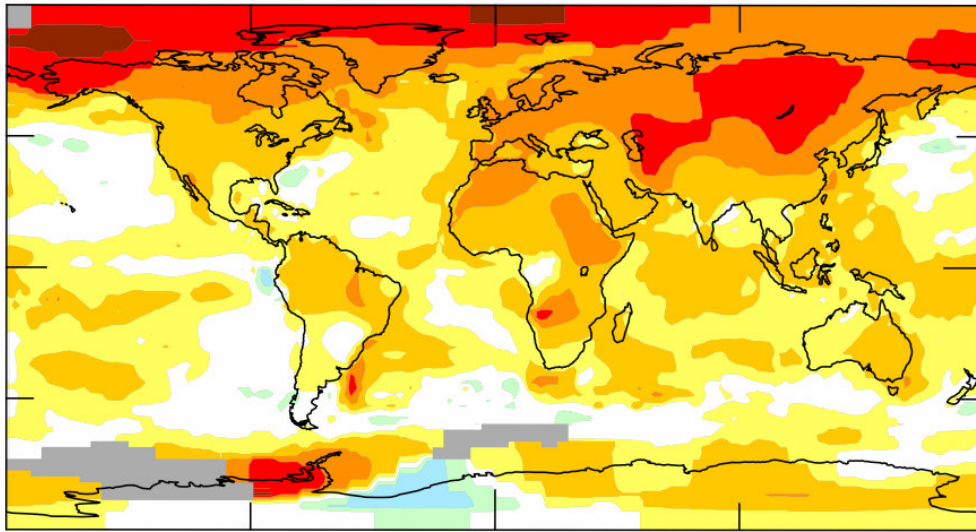
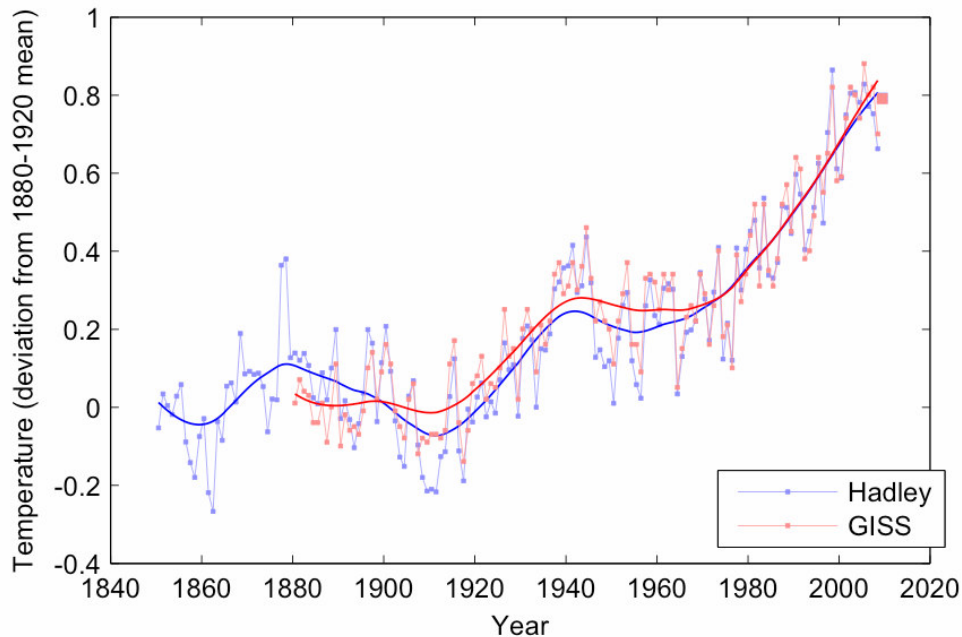


Figure 3: (Top) Mean temperature change between 1950's and 2000's: (Bottom) Global average temperature change from 1850



<http://www.copenhagendiagnosis.com/>

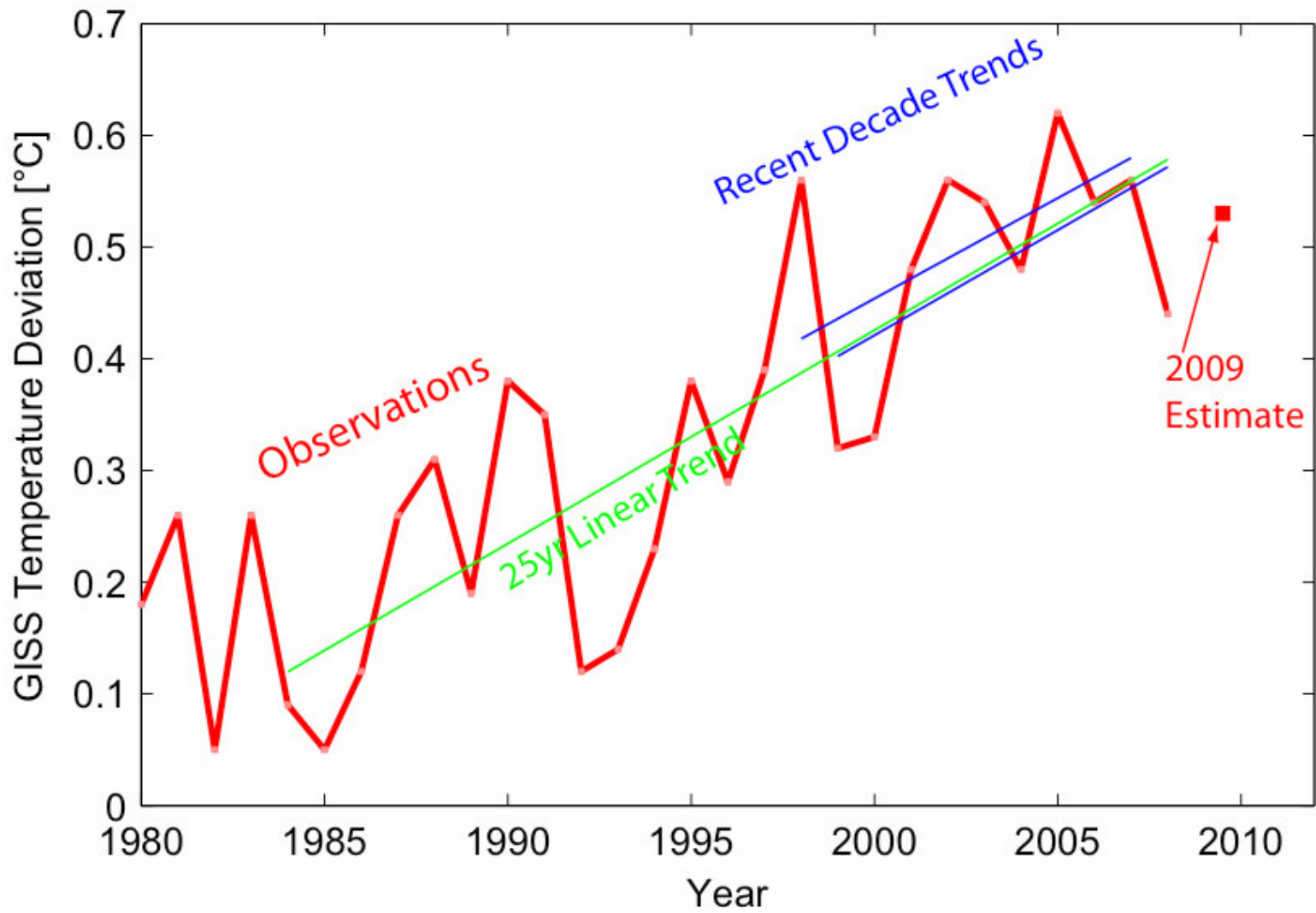


Figure 4: Global Temperature Change since 1980 from GISS data

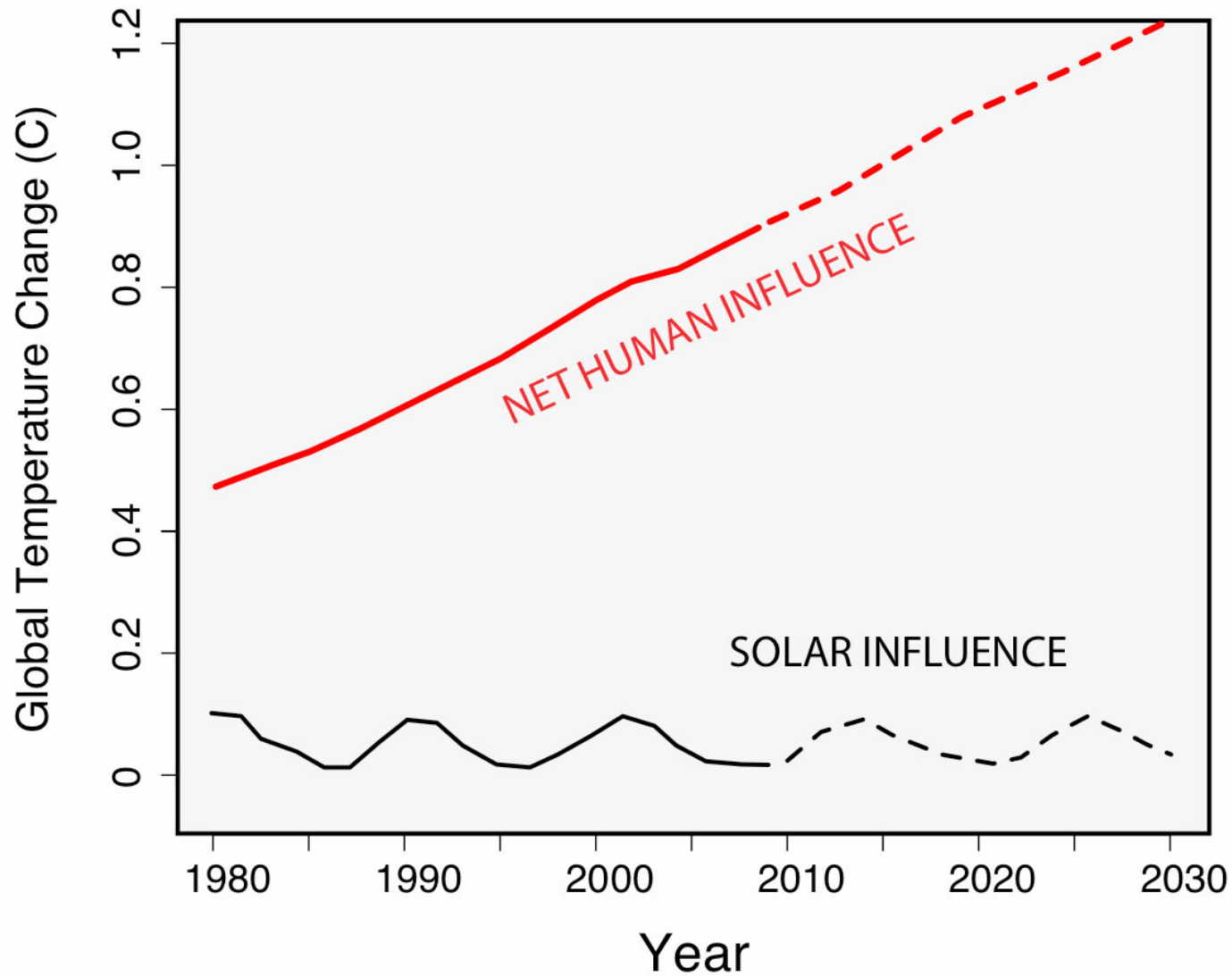


Figure 5: Human versus Solar influence since 1980 and projections to 2030

U.S. Climate Extremes Index: Step4

Annual (Jan-Dec)
1910-2008

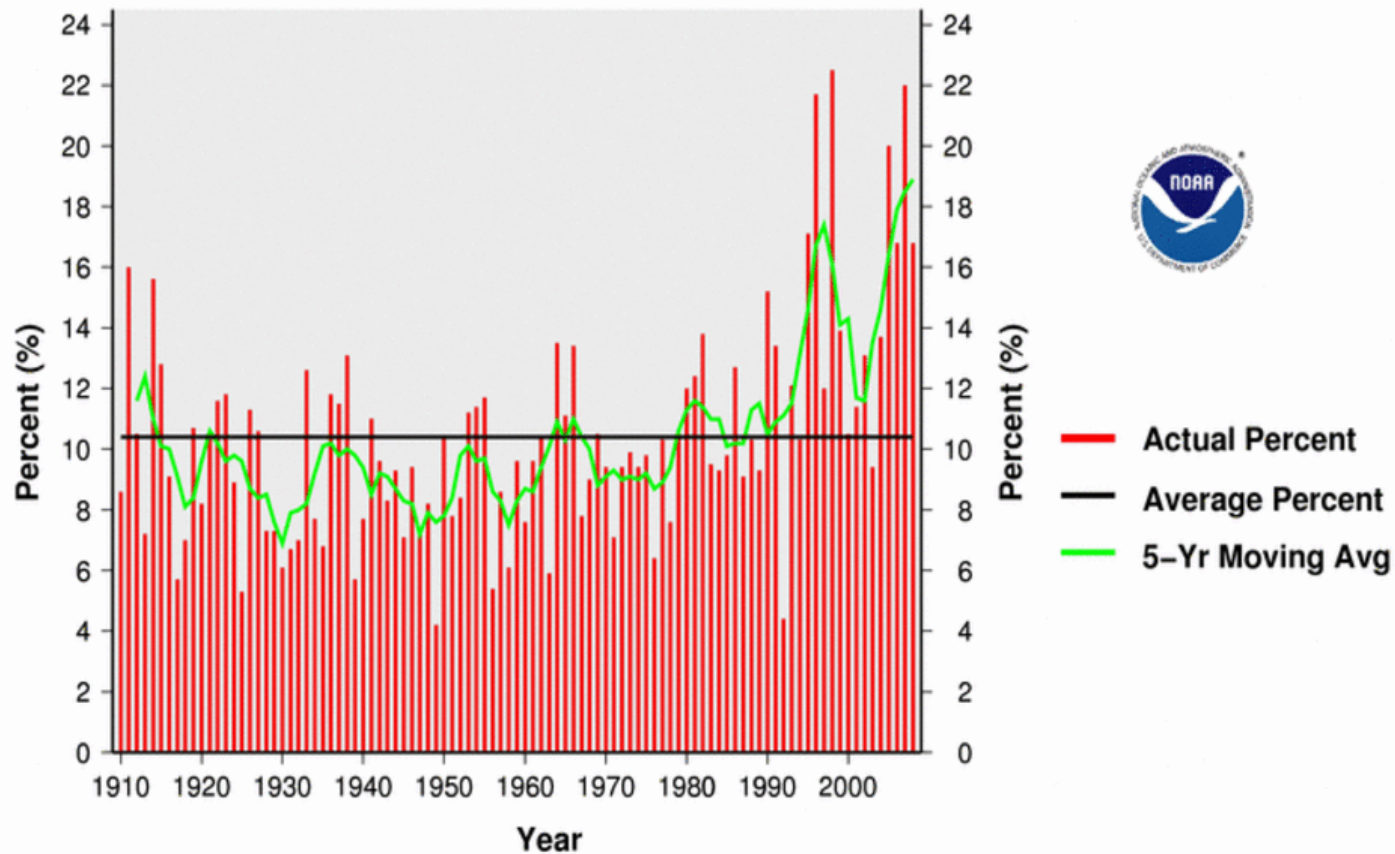


Figure 6: United States climatic extremes since 1910

The Copenhagen Diagnosis

Updating the World on the Latest Climate Science



<http://www.copenhagendiagnosis.com/>

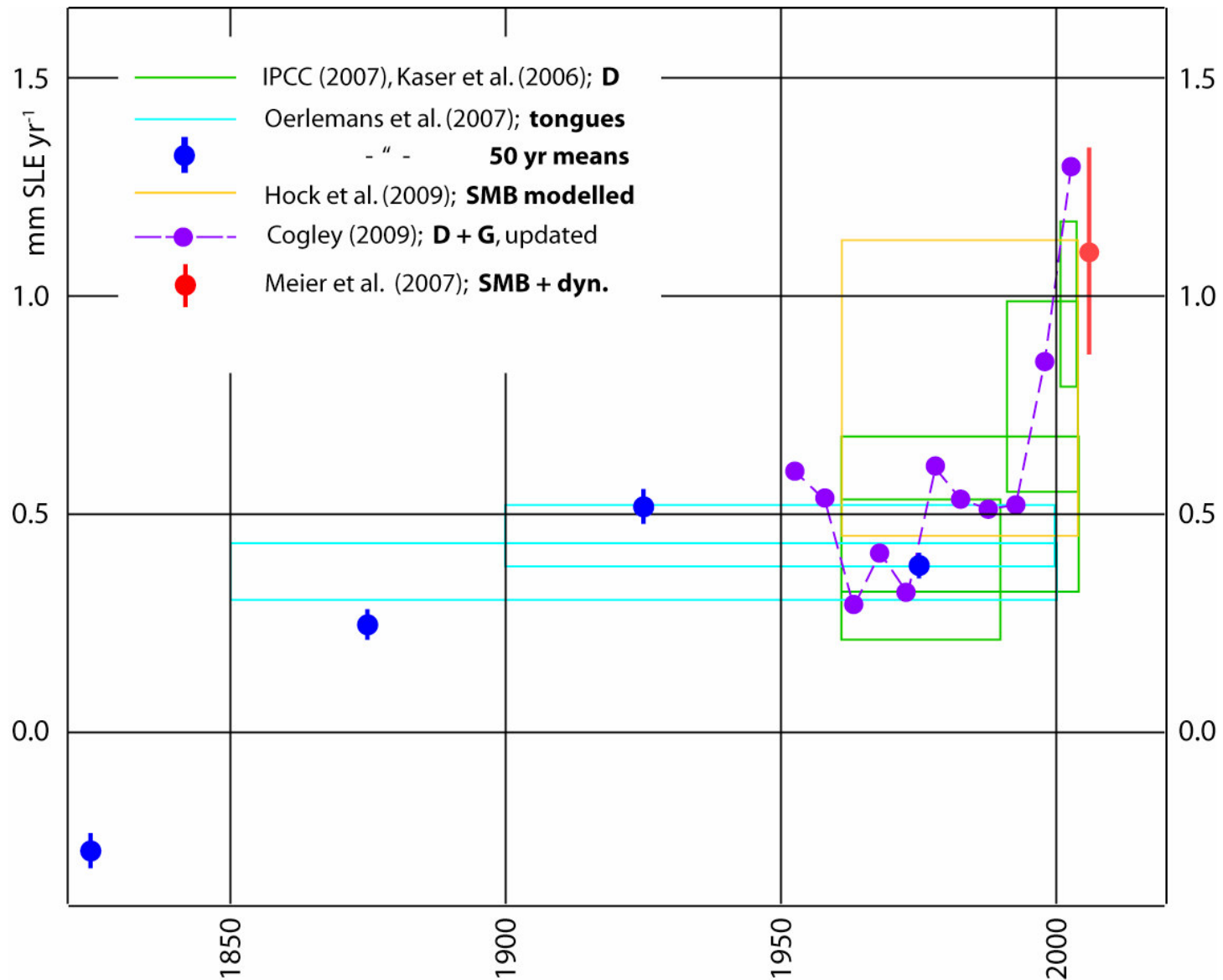


Figure 7: Contribution of glaciers and ice-caps to global sea-level

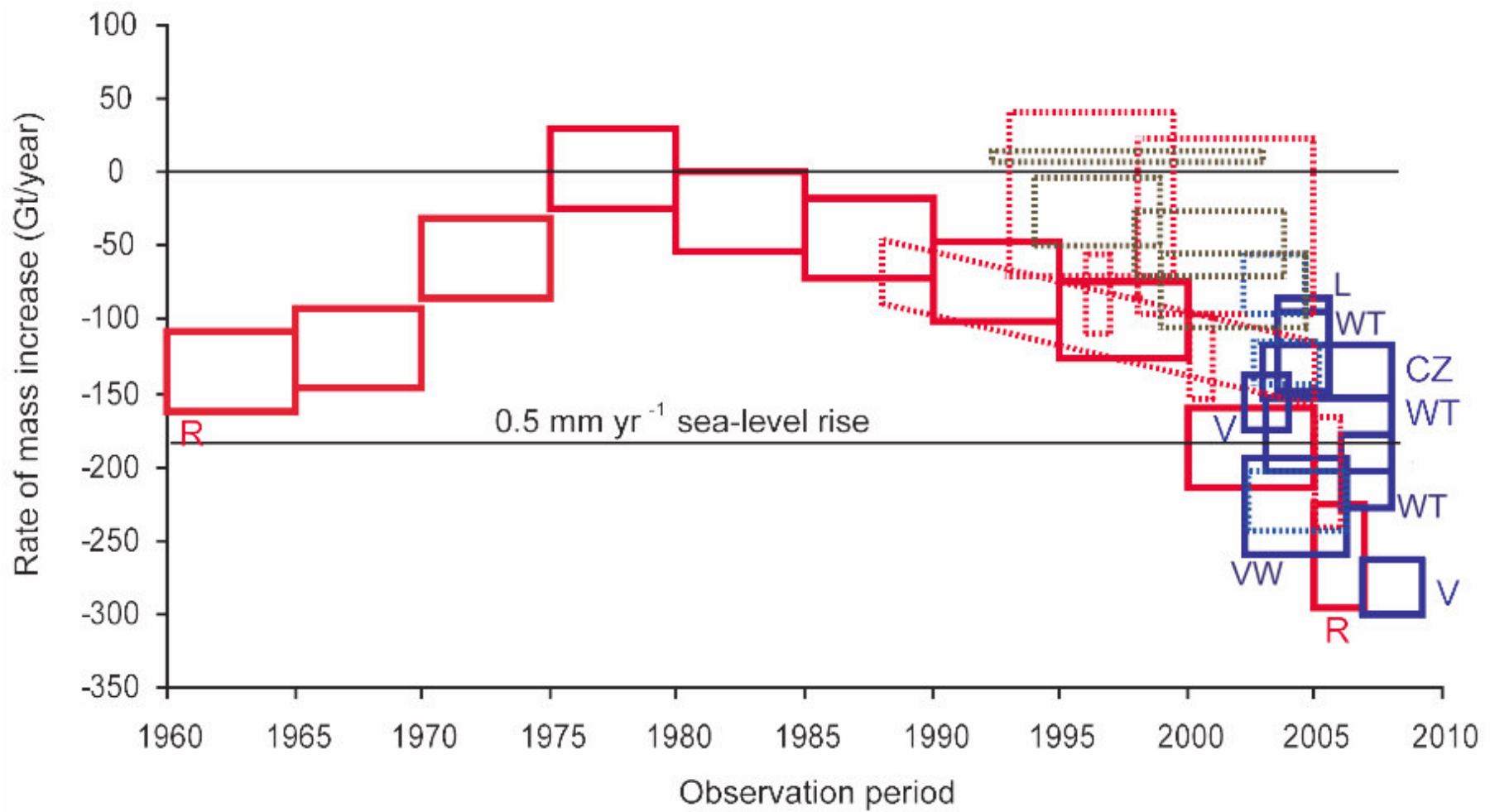


Figure 8: Greenland ice loss since 1960

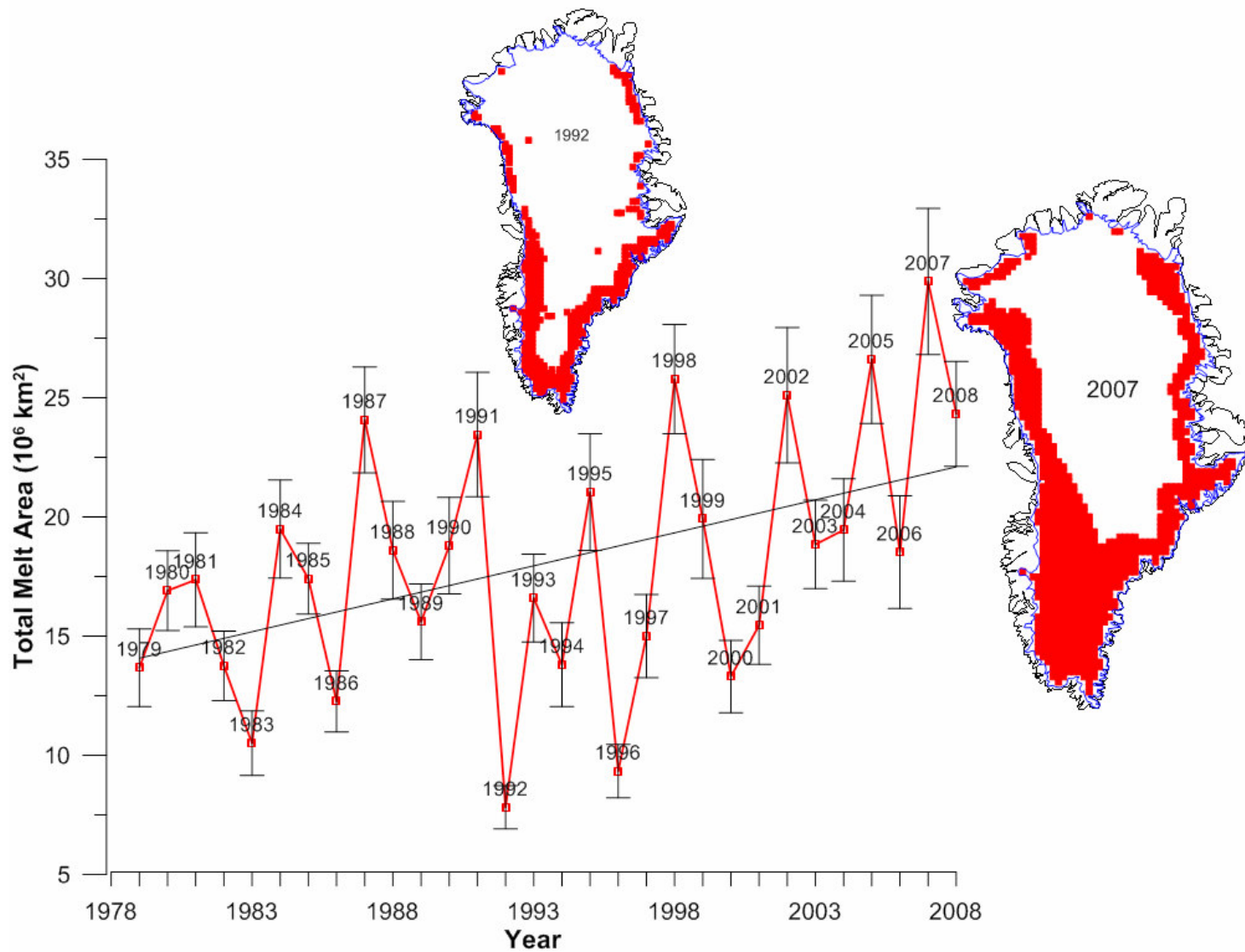


Figure 9: Greenland ice-melt since 1979



<http://www.copenhagendiagnosis.com/>

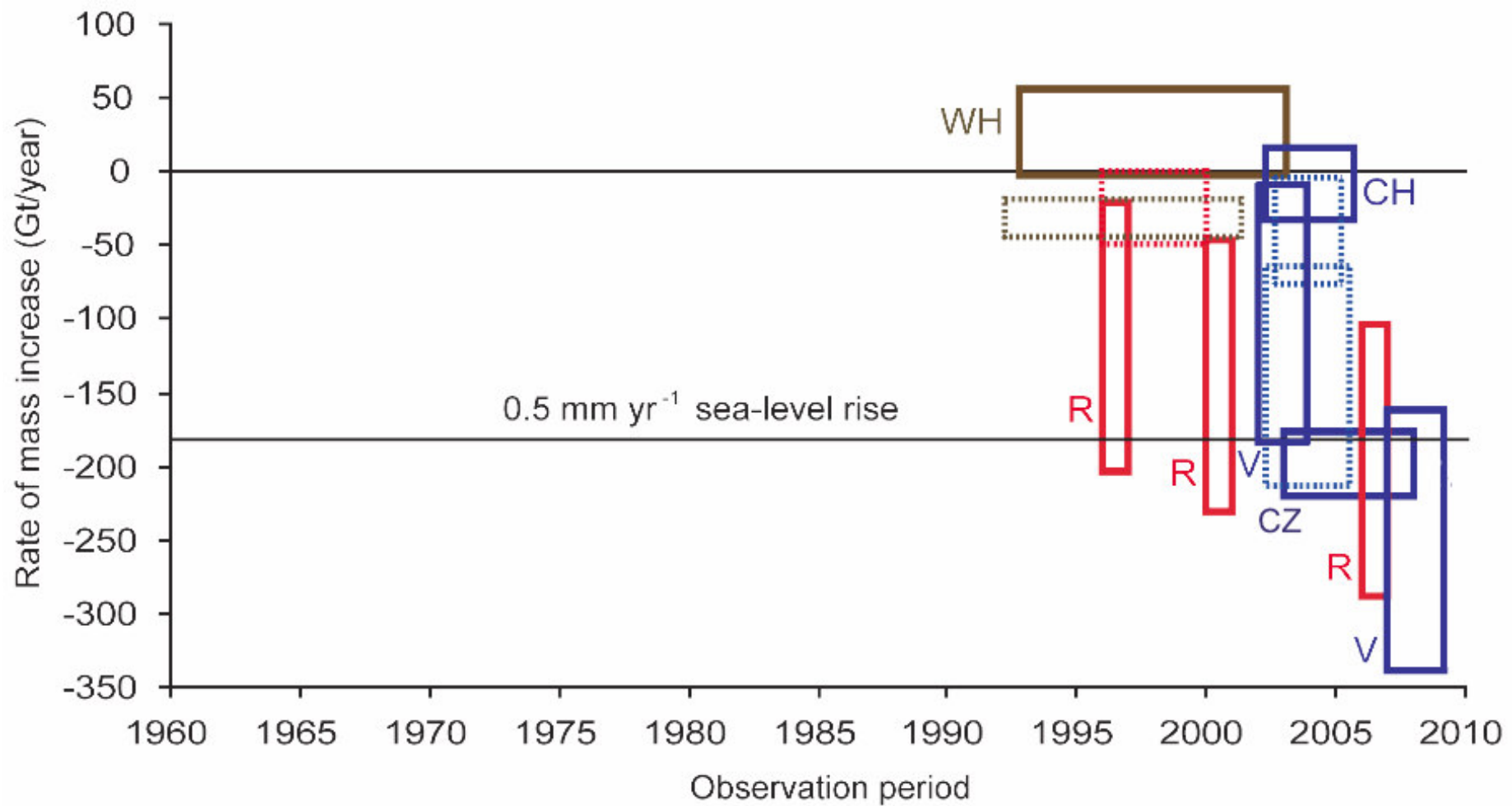


Figure 10: Antarctic ice loss since 1960

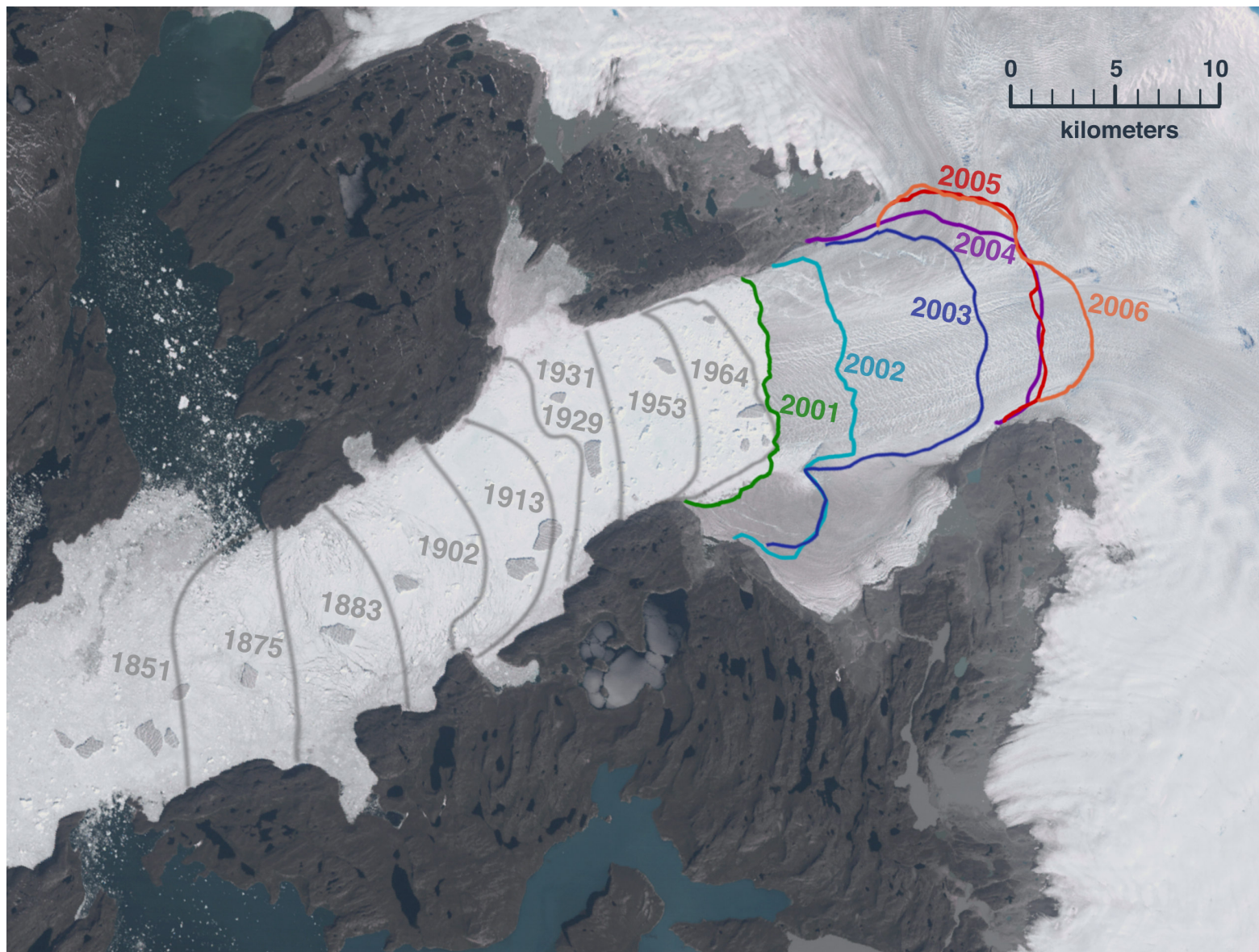


Figure 11: Jakobshaven Isbrae ice shelf calving since 1851

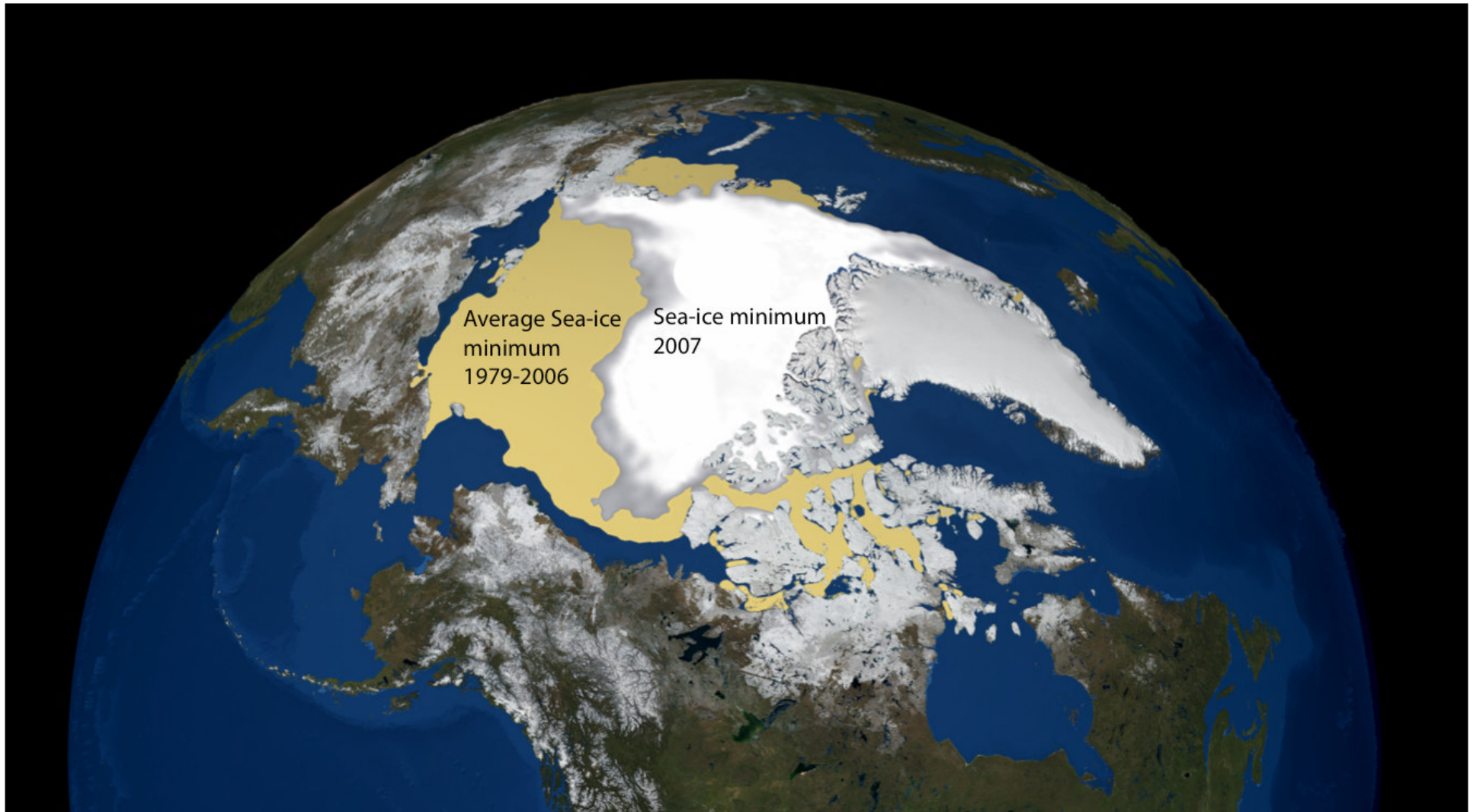


Figure 12: Minimum arctic sea-ice extent from 1979 to 2007

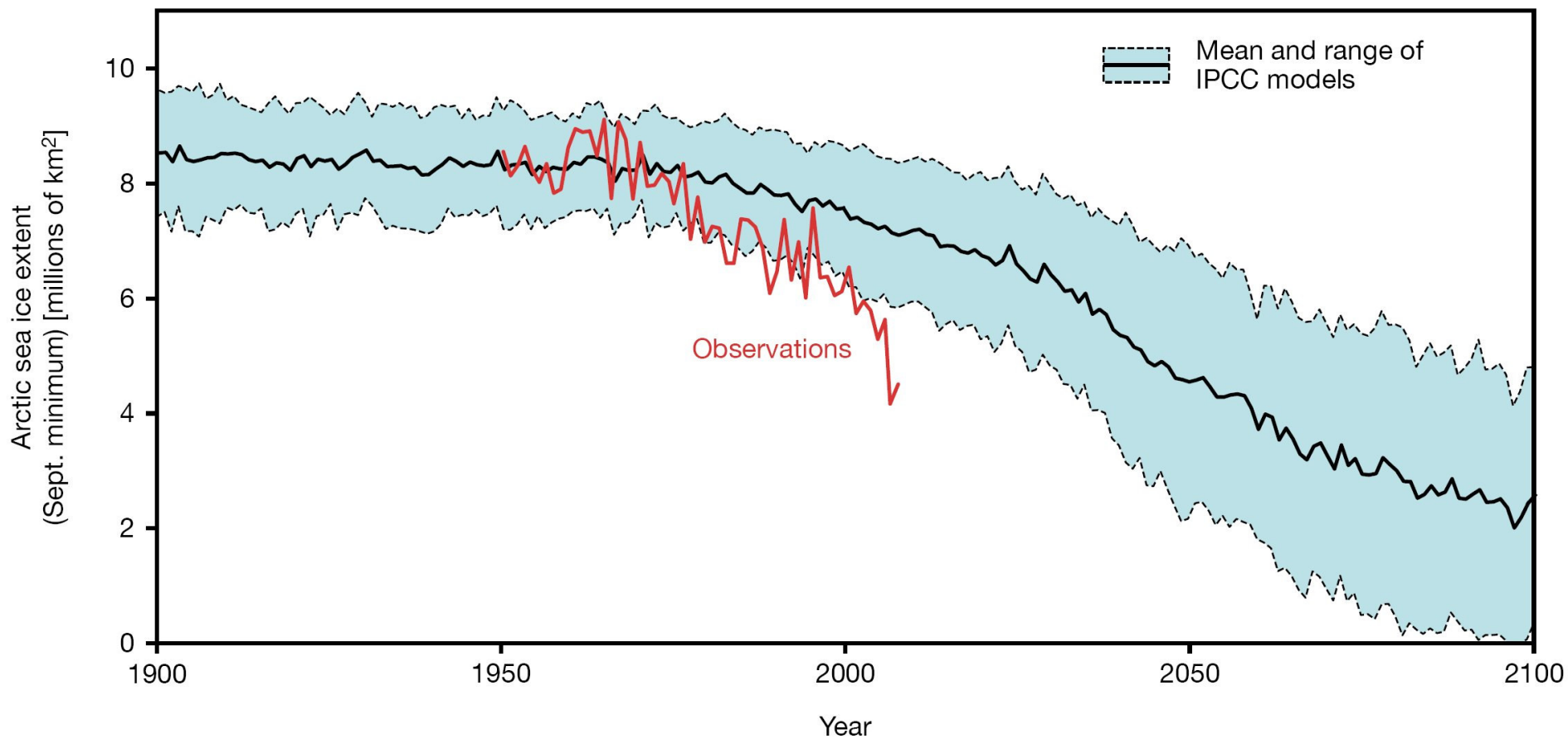


Figure 13: Observed and modeled Arctic sea-ice extent

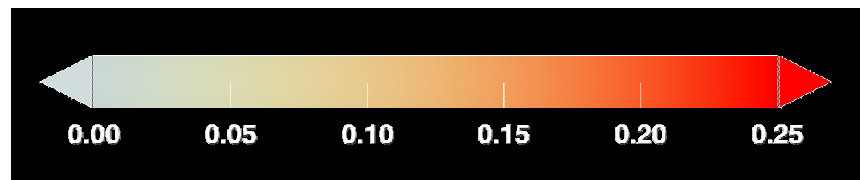
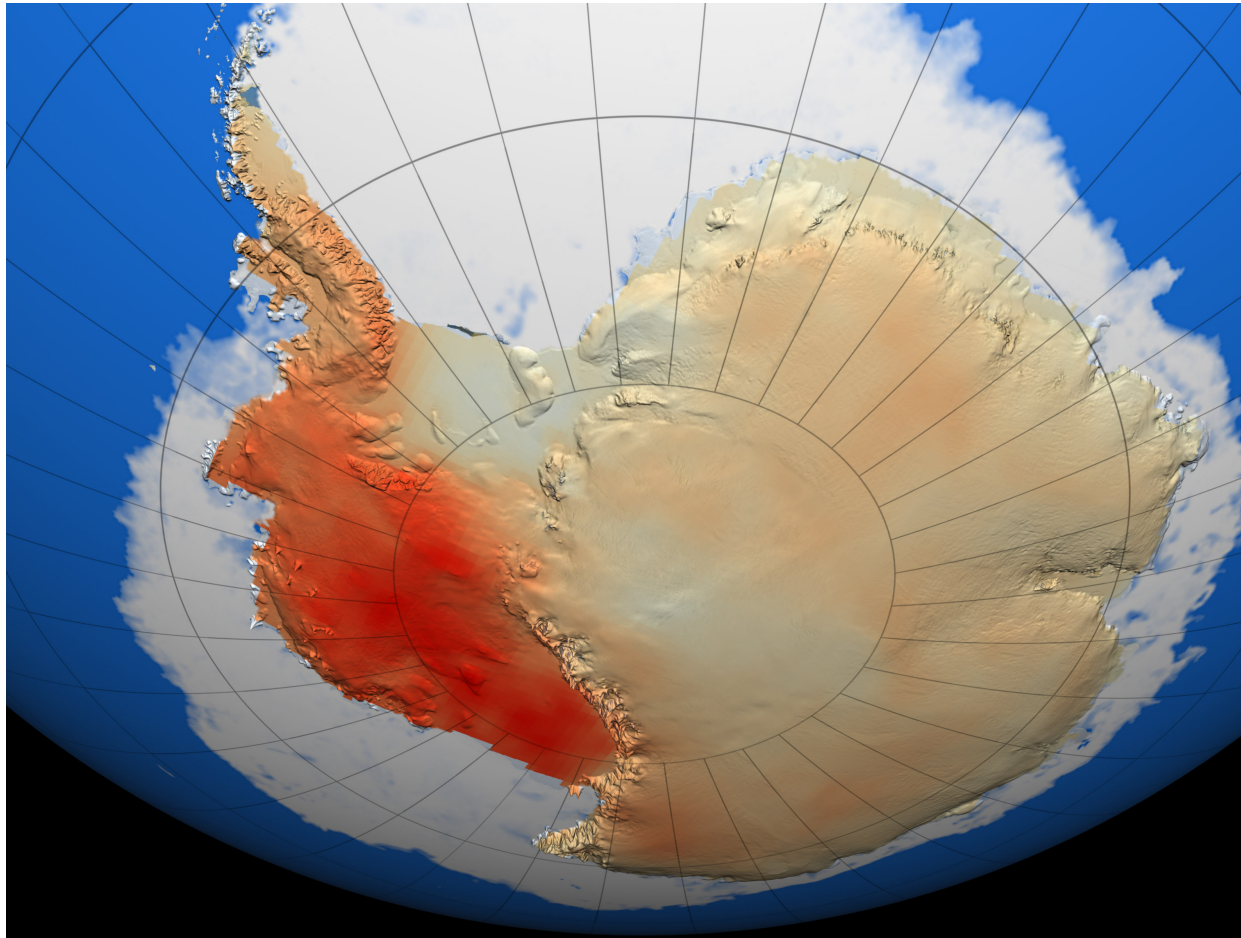


Figure 14: Observed Antarctic Warming Trend ($^{\circ}\text{C}/\text{decade}$) from 1957-2006

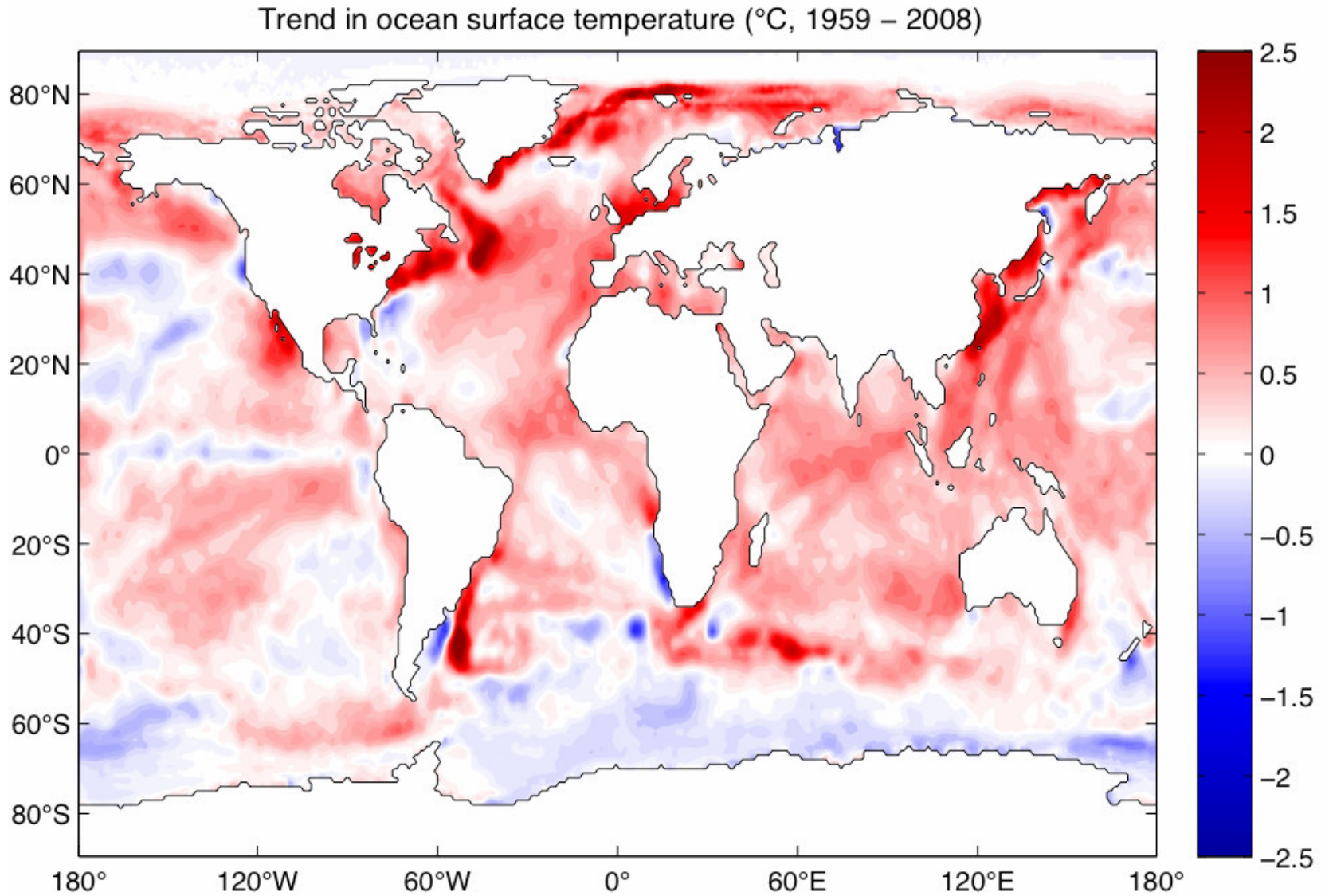


Figure 15

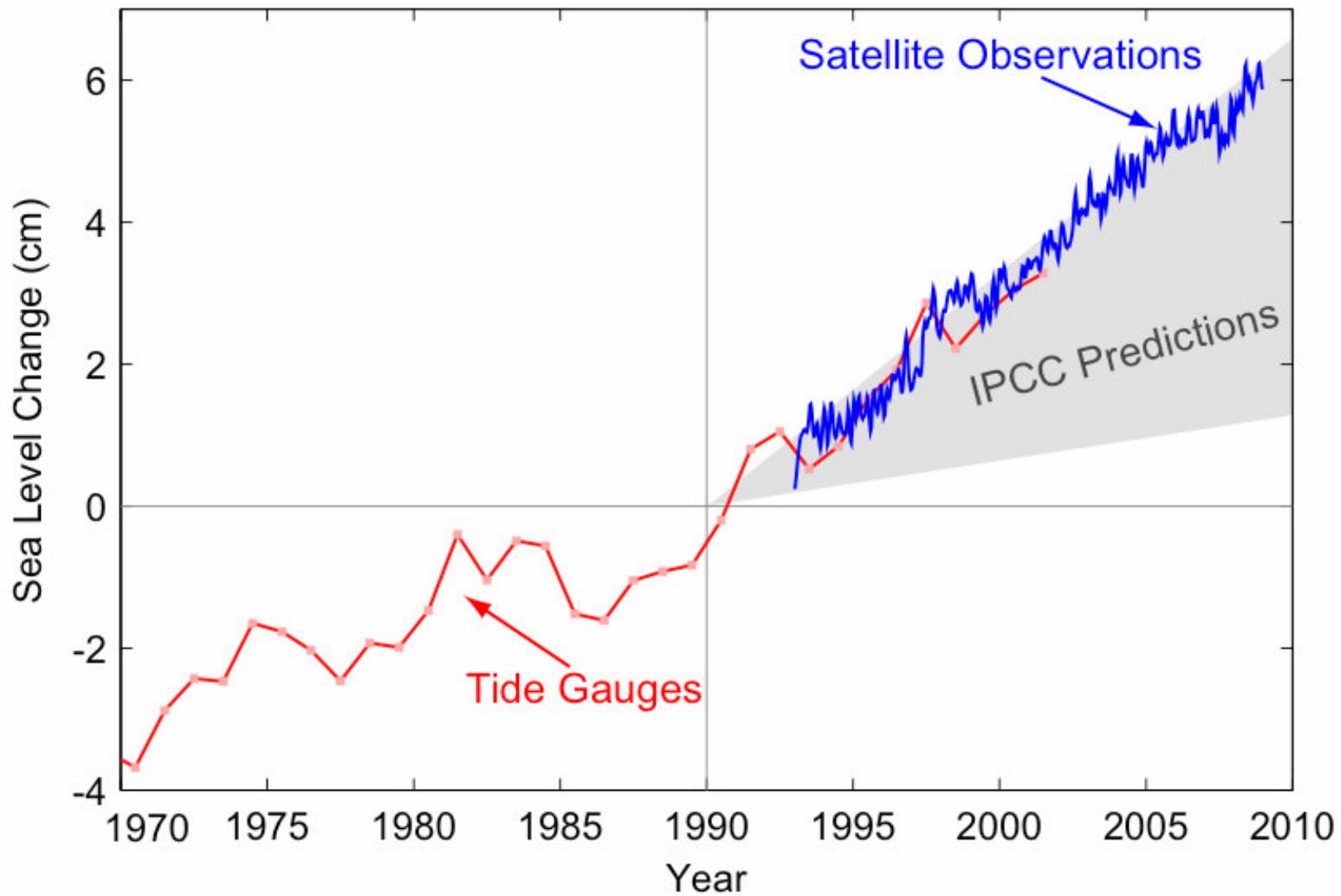


Figure 16: Sea-level change 1970-2010

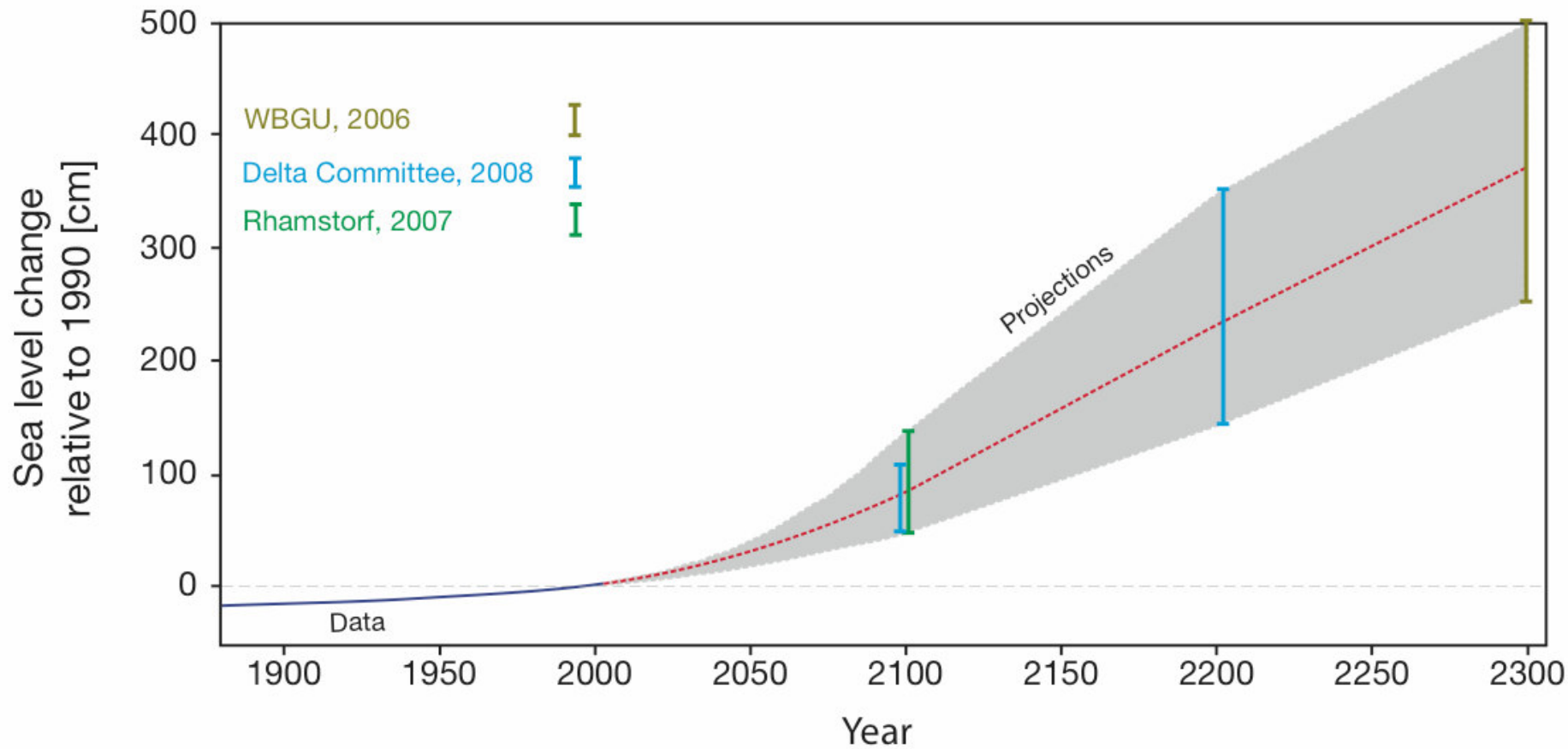


Figure 17: Past and future sea-level projections

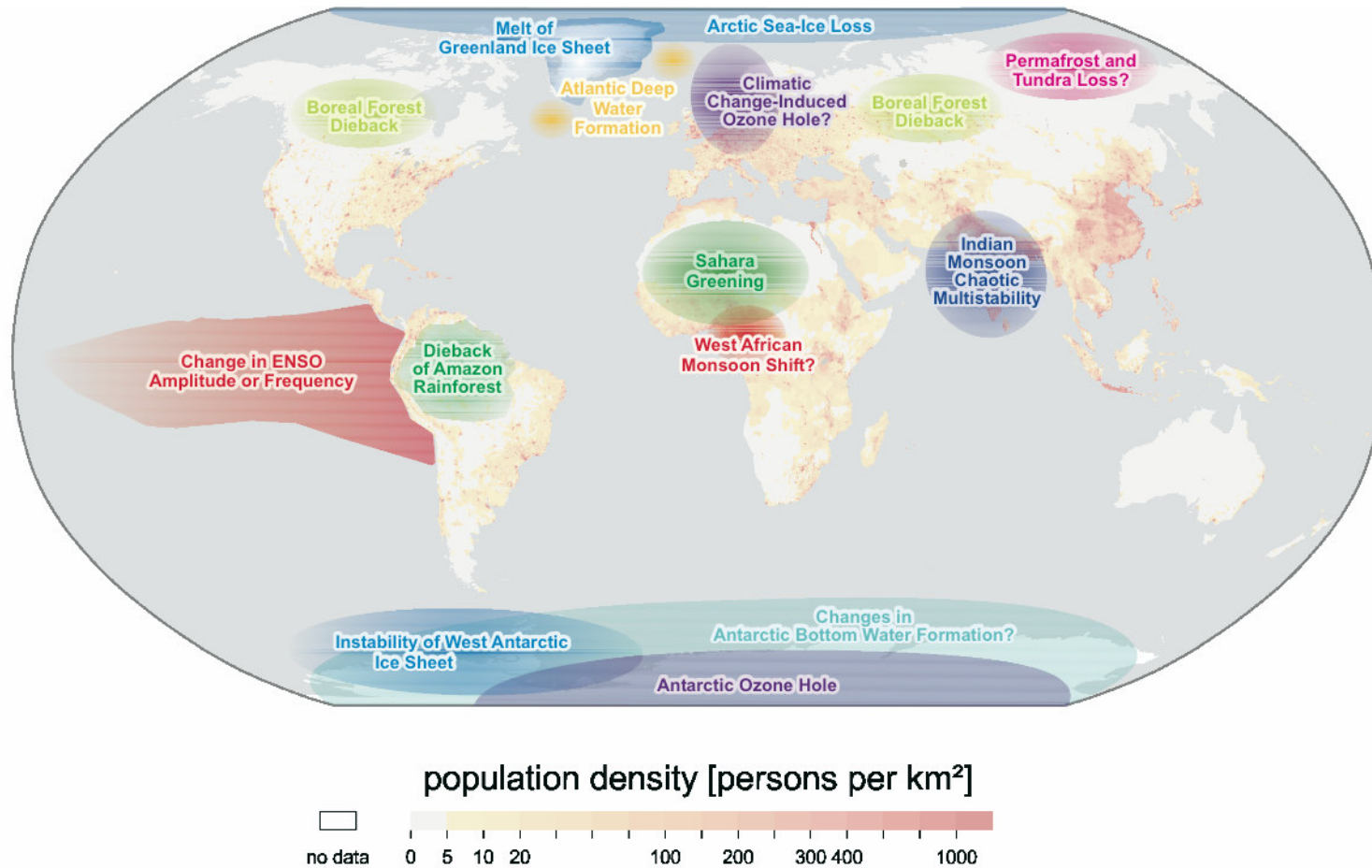


Figure 18: Major tipping-points in the climate system

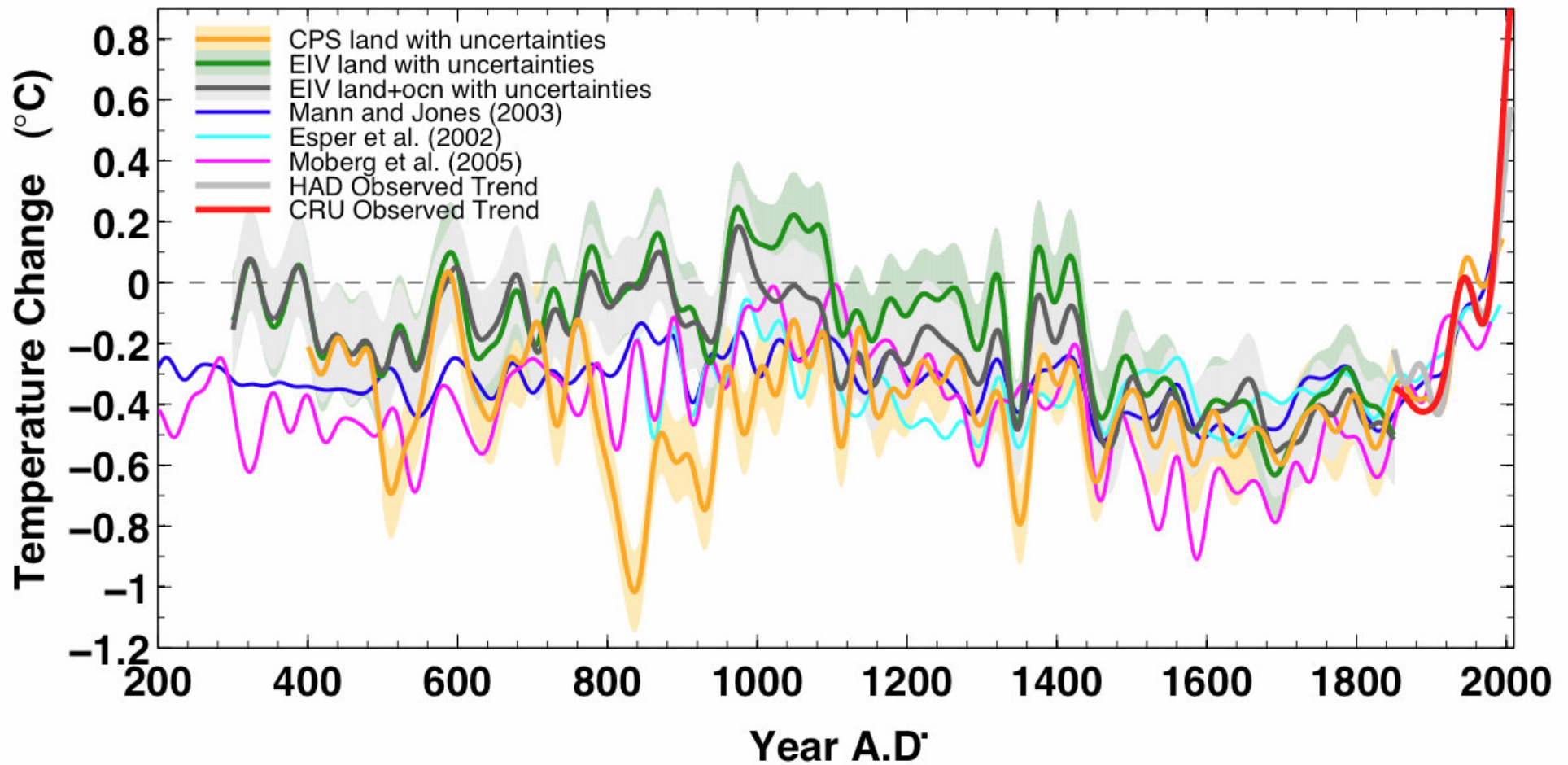


Figure 19: Northern Hemisphere reconstructed temperature change since 200AD



<http://www.copenhagendiagnosis.com/>

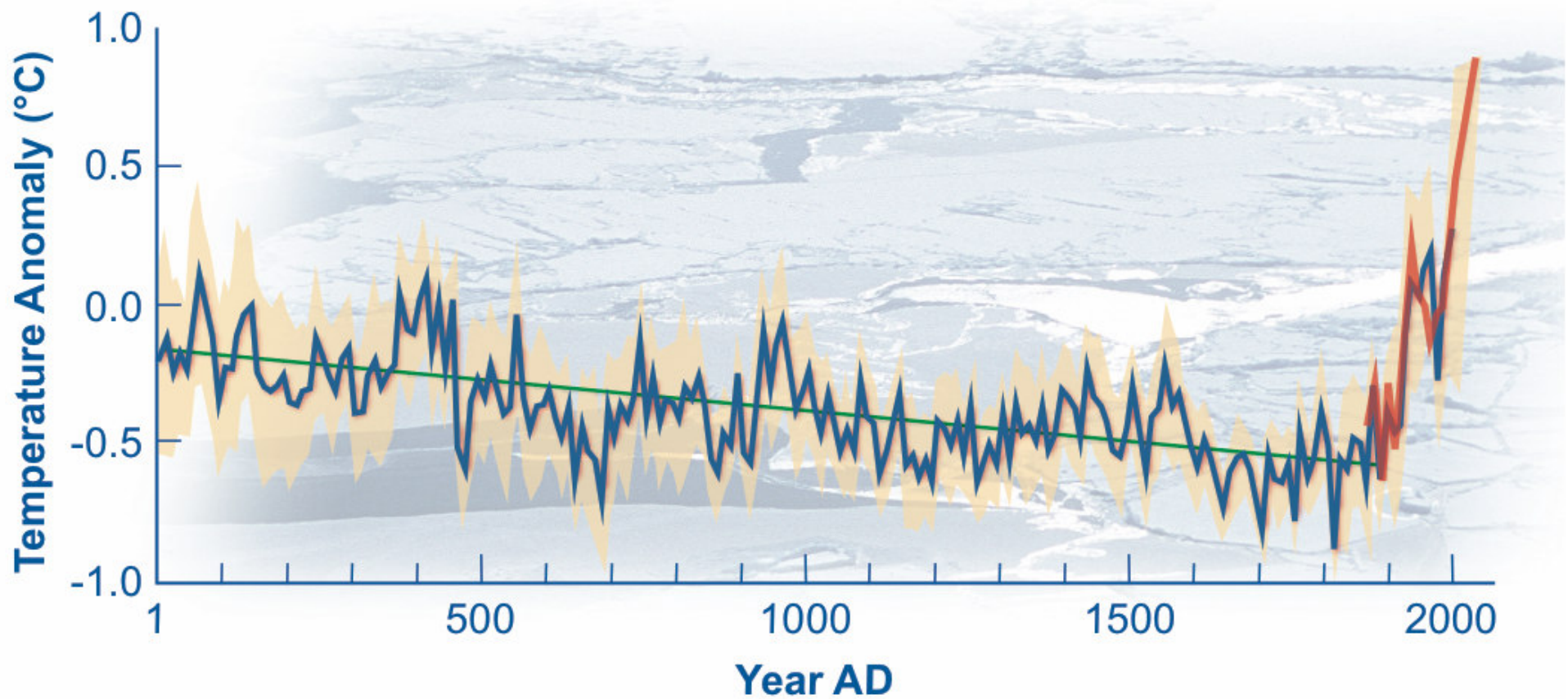


Figure 20: Arctic air temperature change reconstructed (blue), observed (red)

Global Temperature Relative to 1800-1900 (°C)

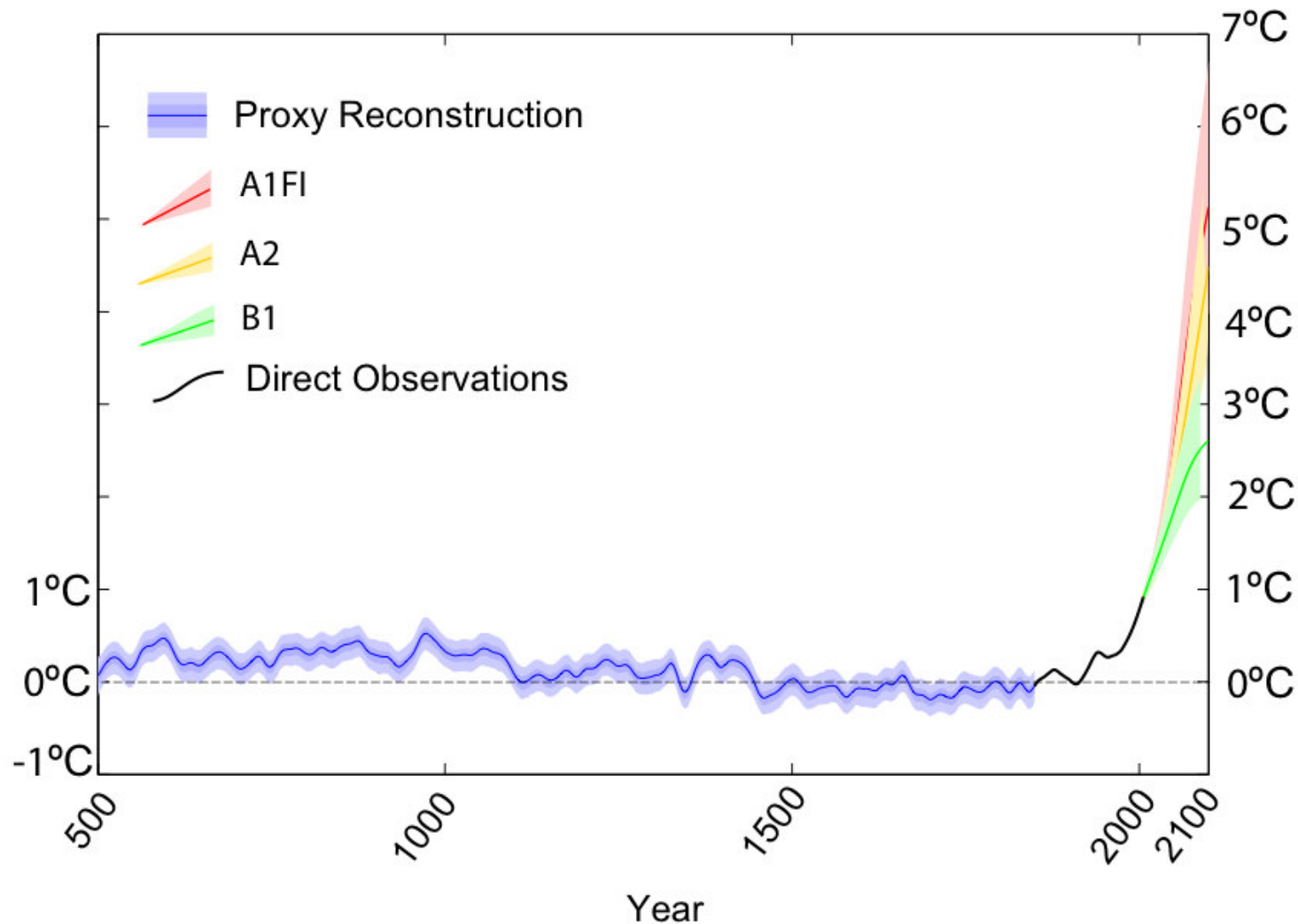


Figure 21: Reconstructed, observed and future warming projections

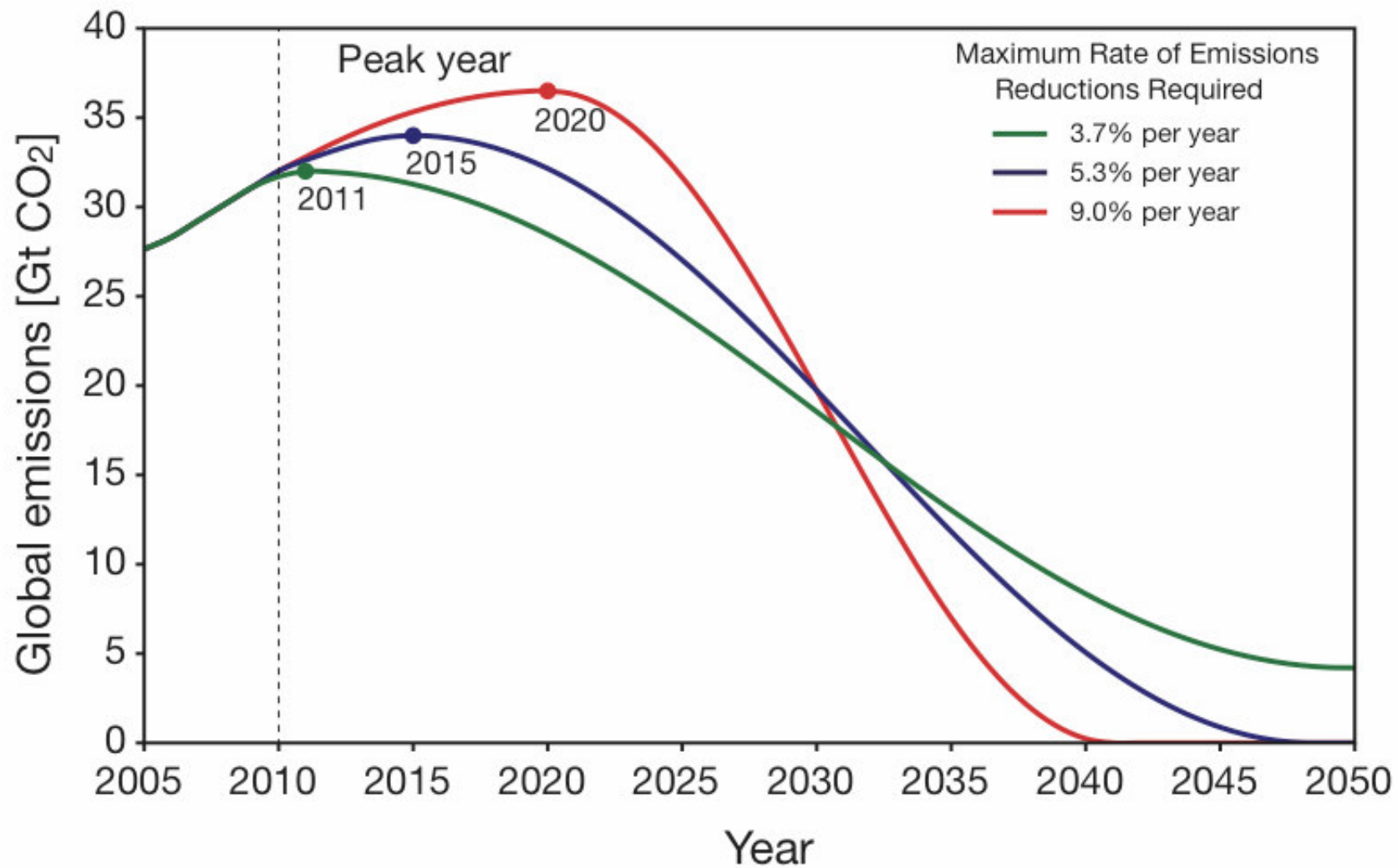


Figure 22: Emissions pathways to give 67% chance of limiting global warming to 2°C