

# **Integrated Ocean Drilling Program Expedition 316 Preliminary Report**

## **NanTroSEIZE Stage 1A: NanTroSEIZE Shallow Megasplay and Frontal Thrusts**

19 December 2007–5 February 2008

Gaku Kimura, Elizabeth J. Screaton, Daniel Curewitz,  
and the Expedition 316 Scientists



Published by  
Integrated Ocean Drilling Program Management International, Inc.,  
for the Integrated Ocean Drilling Program

## **Publisher's notes**

Material in this publication may be copied without restraint for library, abstract service, educational, or personal research purposes; however, this source should be appropriately acknowledged. Core samples and the wider set of data from the science program covered in this report are under moratorium and accessible only to Science Party members until 5 February 2009.

### **Citation:**

Kimura, G., Sreaton, E.J., Curewitz, D., and the Expedition 316 Scientists, 2008. NanTroSEIZE Stage 1A: NanTroSEIZE shallow megasplay and frontal thrusts. *IODP Prel. Rept.*, 316. doi:10.2204/iodp.pr.316.2008

### **Distribution:**

Electronic copies of this series may be obtained from the Integrated Ocean Drilling Program (IODP) Scientific Publications homepage on the World Wide Web at [www.iodp.org/scientific-publications](http://www.iodp.org/scientific-publications).

This publication was prepared by the Japanese Implementing Organization, Center for Deep Earth Exploration (CDEX) at the Japan Agency for Marine-Earth Science and Technology (JAMSTEC), as an account of work performed under the international Integrated Ocean Drilling Program (IODP), which is managed by IODP Management International (IODP-MI), Inc. Funding for the program is provided by the following agencies:

National Science Foundation (NSF), United States

Ministry of Education, Culture, Sports, Science and Technology (MEXT), Japan

European Consortium for Ocean Research Drilling (ECORD)

Ministry of Science and Technology (MOST), People's Republic of China

Korea Institute of Geoscience and Mineral Resources (KIGAM), Interim Asian Consortium

## **Disclaimer**

Any opinions, findings, and conclusions or recommendations expressed in this publication are those of the author(s) and do not necessarily reflect the views of the participating agencies, IODP Management International, Inc., or Japan Agency for Marine-Earth Science and Technology.

## Expedition 316 participants

### Expedition 316 scientists

**Gaku Kimura (Specialty Coordinator)**  
**Co-Chief Scientist**  
Department of Earth and Planetary Science  
Graduate School of Science  
The University of Tokyo  
7-3-1 Hongo, Bunkyo-ku  
Tokyo 113-0033  
Japan  
[gaku@eps.s.u-tokyo.ac.jp](mailto:gaku@eps.s.u-tokyo.ac.jp)

**Elizabeth J. Screaton**  
**Co-Chief Scientist**  
Department of Geology  
University of Florida  
PO Box 112120  
Gainesville FL 32611  
USA  
[screaton@ufl.edu](mailto:screaton@ufl.edu)

**Daniel Curewitz**  
**Expedition Project Manager**  
Center for Deep Earth Exploration  
Science Support Group  
Japan Agency for Marine-Earth Science  
and Technology  
Yokohama Institute of Earth Sciences  
3173-25 Showa-machi, Kanazawa-ku  
Yokohama 236-000  
Japan  
[daniel@jamstec.go.jp](mailto:daniel@jamstec.go.jp)

**Frederick Chester**  
**Structural Geologist**  
Department of Geology and Geophysics  
Texas A&M University  
MS 3115  
College Station TX 77843-3115  
USA  
[chester@geo.tamu.edu](mailto:chester@geo.tamu.edu)

**Olivier Fabbri**  
**Structural Geologist**  
University of Franche-Comte  
16 Route de Gray  
25030 Besançon  
France  
[Olivier.fabbri@univ-fcomte.fr](mailto:Olivier.fabbri@univ-fcomte.fr)

**Chris Fergusson**  
**Sedimentologist**  
School of Earth and Environmental Sciences  
University of Wollongong  
New South Wales 2522  
Australia  
[cferguss@uow.edu.au](mailto:cferguss@uow.edu.au)

**France E. Girault**  
**Micropaleontologist (foraminifers and radiolarians)**  
Geological Institute  
ETH Zürich  
CAB E-62  
Universitätstrasse 6  
8092 Zürich  
Switzerland  
[france.girault@erdw.ethz.ch](mailto:france.girault@erdw.ethz.ch)

**David Goldsby**  
**Physical Properties (fault rocks)**  
Department of Geological Sciences  
Brown University  
324 Brook Street, PO Box 1846  
Providence RI 02912  
USA  
[David\\_Goldsby@brown.edu](mailto:David_Goldsby@brown.edu)

**Robert Harris**  
**Physical Properties (downhole measurements)**  
College of Atmospheric and Oceanic Sciences  
Oregon State University  
104 COAS Administration Building  
Corvallis OR 97331  
USA  
[rharris@coas.oregonstate.edu](mailto:rharris@coas.oregonstate.edu)

**Fumio Inagaki**  
**Microbiologist (biogeochemistry)**  
Kochi Institute for Core Sample Research  
Japan Agency for Marine-Earth Science  
and Technology  
B200 Monobe, Nankoku  
Kochi 783-8502  
Japan  
[inagaki@jamstec.go.jp](mailto:inagaki@jamstec.go.jp)

**Tao Jiang**  
**Core-Log-Seismic Integration**  
Submarine Geophysics Group  
Ocean Research Institute  
Department of Ocean Floor Geoscience  
University of Tokyo  
1-15-1 Minamidai, Nakano-ku  
Tokyo 164-8639  
Japan  
[jiangtao@ori.u-tokyo.ac.jp](mailto:jiangtao@ori.u-tokyo.ac.jp)

Present address (1 September 2008):  
Faculty of Earth Resources  
China University of Geosciences  
388 Lumo Road  
Wuhan 430074  
People's Republic of China  
[fluid@cug.edu.cn](mailto:fluid@cug.edu.cn)

**Yujin Kitamura**  
**Paleomagnetist**  
Leibniz Institute of Marine Sciences  
IFM-GEOMAR  
Wischhofstrasse 1-3  
24148 Kiel  
Germany  
[ykitamura@ifm-geomar.de](mailto:ykitamura@ifm-geomar.de)

**Matt Knuth**  
**Physical Properties**  
Department of Geology and Geophysics  
University of Wisconsin  
1215 West Dayton Street  
Madison WI 53706  
USA  
[mwknuth@wisc.edu](mailto:mwknuth@wisc.edu)

**Chun-Feng Li**  
**Structural Geologist**  
School of Ocean and Earth Sciences  
Tongji University  
1239 Siping Road  
Shanghai 200092  
People's Republic of China  
[cfl@tongji.edu.cn](mailto:cfl@tongji.edu.cn)

**Lillemor Claesson Liljedahl**  
**Inorganic Geochemist**  
Department of Geology and Geochemistry  
Stockholm University  
Svante Arrhenius väg 8C  
106 91 Stockholm  
Sweden  
[lillemor.claesson@geo.su.se](mailto:lillemor.claesson@geo.su.se)

**Laurent Louis**  
**Physical Properties (hydrogeology)**  
Département des Sciences de la Terre  
et de l'Environnement  
Université de Cergy-Pontoise  
UMR CNRS 7072  
Bâtiment Neuville 3.1  
95031 Cergy-Pontoise  
France  
[laurent.louis@u-cergy.fr](mailto:laurent.louis@u-cergy.fr)

**Kitty Milliken**  
**Sedimentologist**  
Department of Geological Sciences  
University of Texas at Austin  
1 University Station C1100  
Austin TX 78712  
USA  
[kittym@mail.utexas.edu](mailto:kittym@mail.utexas.edu)

**Uisdean Nicholson**  
**Sedimentologist**  
Department of Geology and Petroleum  
Geology  
King's College  
University of Aberdeen  
Aberdeen AB24 3UE  
United Kingdom  
[u.nicholson@abdn.ac.uk](mailto:u.nicholson@abdn.ac.uk)

**Natascha Riedinger**  
**Organic Geochemist**  
Max Planck Institute for Marine Microbiology  
Celsiusstrasse 1  
28359 Bremen  
Germany  
[nrieding@mpi-bremen.de](mailto:nrieding@mpi-bremen.de)

**Arito Sakaguchi**  
**Sedimentologist**

Institute for Frontier Research on Earth  
Evolution (IFREE)  
Japan Agency for Marine-Earth Science  
and Technology  
3173-25 Showa-machi, Kanazawa-ku  
Yokohama 236-0001  
Japan  
[arito@jamstec.go.jp](mailto:arito@jamstec.go.jp)

**Evan Solomon**  
**Inorganic Geochemist**

Geoscience Research Division  
Scripps Institution of Oceanography  
University of California, San Diego  
9500 Gilman Drive #0212  
La Jolla CA 92037-0212  
USA  
[esolomon@ucsd.edu](mailto:esolomon@ucsd.edu)

**Michael Strasser**  
**Sedimentologist**

Research Centre Ocean Margins  
University of Bremen  
Leobener Strasse/MARUM Building  
28359 Bremen  
Germany  
[mstrasser@uni-bremen.de](mailto:mstrasser@uni-bremen.de)

**Xin Su**  
**Micropaleontologist (nannofossils)**

School of Marine Geosciences  
China University of Geosciences  
Xueyuan Road 29  
Beijing 100083  
People's Republic of China  
[xsu@cugb.edu.cn](mailto:xsu@cugb.edu.cn)

**Akito Tsutsumi**  
**Physical Properties**

Department of Geology and Mineralogy  
Division of Earth and Planetary Sciences  
Graduate School of Science  
Kyoto University  
Kyoto 606-8502  
Japan  
[tsutsumi@kueps.kyoto-u.ac.jp](mailto:tsutsumi@kueps.kyoto-u.ac.jp)

**Kohtaro Ujiie**  
**Structural Geologist**

Institute for Research on Earth Evolution  
Japan Agency for Marine-Earth Science  
and Technology  
3173-25 Showa-machi, Kanazawa-ku  
Yokohama 236-0001  
Japan  
[ujiiek@jamstec.go.jp](mailto:ujiiek@jamstec.go.jp)

**Asuka Yamaguchi**  
**Structural Geologist**

Department of Earth and Planetary Science  
University of Tokyo  
7-3-1 Hongo, Bunkyo-ku  
Tokyo 113-0033  
Japan  
[asuka@eps.s.u-tokyo.ac.jp](mailto:asuka@eps.s.u-tokyo.ac.jp)

**Xixi Zhao**  
**Paleomagnetist**

Department of Earth and Planetary Sciences  
University of California Santa Cruz  
1156 High Street  
Santa Cruz CA 95064  
USA  
[xzhao@pmc.ucsc.edu](mailto:xzhao@pmc.ucsc.edu)

## Shipboard personnel and technical representatives

**Captains (Seadrill)**

Kazuo Ichiyama  
Yasushi Minoura  
Yuji Onda

**Offshore Installation Managers (Seadrill)**

Simon Cook  
Scott Pederson

**Operations Superintendents (CDEX)**

Tsuyoshi Abe  
Ikuo Sawada

**Coring Supervisors (AAI)**

Joe (Bubba) Attryde  
James Aumann

**Curators (Marine Works Japan)**

Yohei Arakawa  
Masaru Yasunaga

**Drilling Engineers (CDEX)**

Kazuhiro Higuchi  
Kazutaka Higuchi  
Ikenomoto Daiji  
Tomokazu Saruhashi

**Information Technology Managers (CDEX)**

Yoshihiro Shiga  
Kyoma Takahashi

**Laboratory Officers (Marine Works Japan)**

Kazuhiro Hayashi  
Toshikatsu Kuramoto

**Assistant Laboratory Officers (Marine Works Japan)**

Hiroaki Muraki  
Tomoyuki Tanaka

**Laboratory Technicians (Marine Works Japan)**

Yasuhiro Arii  
Saya Anzai  
Akihiko Fujihara  
Toru Fujiki  
Yuji Fuwa  
Yasushi Hashimoto  
Ayaka Hatsuyama  
Yuya Hitomi  
Tetsuro Iino  
Masumi Ishimori  
Yoshiki Kido  
Yuji Kotani  
Ryo Kurihara  
Lena Maeda  
Junji Matsushita  
Shunsuje Miyabe

Takumi Miyahara  
Takami Mori  
Soichi Moriya  
Hideki Mukoyoshi  
Yukihiko Nakano  
Kimiko Nishijima  
Masahiro Nishimura  
Takuroh Noguchi  
Yoshifumi Noiri  
Daisuke Nyui  
Yuko Sagawa  
Masumi Sakaguchi  
Yusuke Sato  
Miyabi Shunsuke  
Akira So  
Toshikatsu Sugawara  
Tomohiko Sugiyama  
Naomi Suzuki  
Takahiro Suzuki  
Youhei Taketomo  
Tamami Ueno  
Hideki Yamamoto

**Publication Assistants (USIO)**

Ginny Lowe  
Katerina E. Petronotis

**Downhole Measurements (USIO)**

Michael Meiring

**Wellsite Geologists (CDEX)**

Chikara Hiramatsu  
Jo Gyuhwan  
Arata Kato  
Toshio Kaminishi  
Takishi Maki

## Abstract

Integrated Ocean Drilling Program (IODP) Expedition 316 is part of the Nankai Trough Seismogenic Zone Experiment (NanTroSEIZE) complex drilling project (CDP). This coordinated, multiplatform, and multiexpedition drilling project is designed to investigate fault mechanics and seismogenesis along subduction megathrusts through direct sampling, in situ measurements, and long-term monitoring in conjunction with allied laboratory and numerical modeling studies.

Expedition 316 was designed to evaluate the deformation, inferred depth of detachment, structural partitioning, fault zone physical characteristics, and fluid flow at the frontal thrust and at the shallow portion of the megasplay system. To accomplish these objectives, drilling was conducted at two sites in the megasplay region, one within the fault zone and one in the slope basin seaward of the megasplay. Two sites were also drilled within the frontal thrust region. During Expedition 314, two of these sites were characterized using logging while drilling. Site C0004 is located along the slope of the accretionary prism landward of the inferred intersection of the megasplay fault zone with the seafloor. Drilling at this site examined the youngest sediments on the slope overlying the accretionary prism; these sediments consist of slowly deposited marine sediments and redeposited material from upslope. This redeposited material provides information about past slope failures, which may be related to past megasplay movement, earthquakes, and tsunamigenesis. The accretionary prism was sampled and the megasplay fault zone was successfully drilled. Structural observations of core material from the fault zone and two age reversals suggested by nannofossils indicate a complex history of deformation. The sediments under the fault zone were sampled to understand their deformation, consolidation, and fluid flow history. Drilling at Site C0008 targeted the slope basin seaward of the megasplay fault. This basin records the history of fault movement. In addition, sediment layers within this basin provide a reference for sediment underthrusting Site C0004. Drilling at Sites C0006 and C0007 allowed examination of the frontal thrust region. At Site C0006, several fault zones within the prism were penetrated before drilling was stopped because of poor conditions. The plate boundary frontal thrust was successfully drilled and thrust fault material ranging from breccia to fault gouge was successfully recovered at Site C0007.

## Introduction

### Overview of the NanTroSEIZE complex drilling project

Subduction zones account for 90% of global seismic moment release, generating damaging earthquakes and tsunamis with potentially disastrous effects on heavily populated coastal areas (e.g., Lay et al., 2005). Understanding the processes that govern the strength, nature, and distribution of slip along these plate boundary fault systems is a crucial step toward evaluating earthquake and tsunami hazards. More generally, characterizing fault behavior at all plate boundary types through direct sampling, near-field geophysical observations, and measurement of in situ conditions at depths of coseismic slip is a fundamental and societally relevant goal of modern earth science.

To this end, several recent and ongoing drilling programs have targeted portions of active plate boundary faults that have either slipped coseismically during large earthquakes or that have nucleated smaller events. These efforts include the San Andreas Fault Observatory at Depth (Hickman et al., 2004), the Taiwan-Chelungpu Drilling Project (Ma, 2005), and Integrated Ocean Drilling Program (IODP) Nankai Trough Seismogenic Zone Experiment (NanTroSEIZE) drilling (Tobin and Kinoshita, 2006a, 2006b).

The NanTroSEIZE project is a multiexpedition, multiplatform, multistage IODP complex drilling program focused on understanding the mechanics of seismogenesis and rupture propagation along subduction plate boundary faults. The drilling program represents a coordinated effort to sample and instrument the plate boundary system at several locations offshore the Kii Peninsula (Figs. **F1**, **F2**), with the main objectives of understanding (Tobin and Kinoshita, 2006a, 2006b)

- The aseismic–seismic transition of the megathrust fault system,
- Processes of earthquake and tsunami generation, and
- The hydrologic behavior of the plate boundary.

The drilling program will evaluate a set of core hypotheses through a combination of riser and riserless drilling, long-term observatories, and associated geophysical, laboratory, and numerical modeling efforts. The following hypotheses are paraphrased from the original proposals and outlined in Tobin and Kinoshita (2006a, 2006b):

1. Systematic, progressive material and state changes control the onset of seismogenic behavior on subduction thrusts.



2. Subduction megathrusts are weak faults.
3. Plate motion is accommodated primarily by coseismic frictional slip in a concentrated zone (i.e., the fault is locked during the interseismic period).
4. Physical properties of the plate boundary system change with time during the earthquake cycle.
5. A significant, laterally extensive fault system (the “megasplay” fault; Park et al., 2002) slips in discrete events that may include tsunamigenic slip during great earthquakes. During the interseismic period, the megasplay remains locked and accumulates strain.

Sediment-dominated subduction zones such as the East Aleutian, Cascadia, and Nankai margins are characterized by repeated occurrences of great earthquakes of ~M 8.0 (Ruff and Kanamori, 1983). Although the causative mechanisms are not well understood (e.g., Byrne et al., 1988; Moore and Saffer, 2001; Saffer and Marone, 2003), the updip limit of the seismogenic zones at these margins is thought to correlate with a topographic break along the outer rise (e.g., Byrne et al., 1988; Wang and Hu, 2006). Accretionary prisms in these subduction zones are separated into two parts by this topographic break (Wang and Hu, 2006; Kimura et al., 2007a), and the inner and outer wedges are located above the seismogenic plate boundary and aseismic décollement, respectively.

At Nankai Trough, high-resolution images of the outer rise from seismic reflection profiles clearly document a large out-of-sequence thrust (OOST) fault system (the megasplay fault after Park et al., 2002) that branches from the plate boundary décollement within the coseismic rupture zone of the 1944 Tonankai M 8.2 earthquake (Fig. F2). Several lines of evidence indicate that the megasplay system is active and may accommodate an appreciable component of plate boundary motion. However, the partitioning of strain between the lower plate interface (the décollement zone) and the megasplay system and the nature and mechanisms of fault slip as a function of depth and time on the megasplay are not understood. As stated in the fifth hypothesis above, one of the first-order goals in characterizing the seismogenic zone along the Nankai Trough—and which bears on understanding subduction zone megathrust behavior globally—is to document the role of the megasplay fault in accommodating plate motion and to characterize its mechanical and hydrologic behavior.

Stage 1A of the NanTroSEIZE project consisted of three coordinated riserless drilling expeditions to drill several sites across the continental slope and rise offshore the Kii Peninsula, within the inferred coseismic slip region of the 1944 Tonankai M 8.2 earth-

quake (Figs. **F1B**, **F2**) (Tobin and Kinoshita, 2006a, 2006b). The first of these was a logging-while-drilling (LWD) expedition that served as a geophysical baseline for all of the Stage 1A drilling sites (IODP Expedition 314: LWD Transect; D/V *Chikyu*) to define physical properties, lithology, and structural information in advance of coring operations. This was followed by a coring expedition (Expedition 315: Megasplay Riser Pilot, *Chikyu*) that sampled the materials and characterized in situ conditions within the accretionary wedge to a depth of 458 meters below seafloor (mbsf) at Site C0001 (proposed Site NT2-03) and 1057 mbsf at Site C0002. This expedition (IODP Expedition 316; Shallow Megasplay and Frontal Thrusts, *Chikyu*) was designed to characterize two major thrust fault systems at relatively shallow depths where they are accessible to riserless drilling.

## Background

### Geological setting

The Nankai Trough is formed by subduction of the Philippine Sea plate to the northwest beneath the Eurasian plate at a rate of ~4 km/m.y. (Seno et al., 1993). The convergence direction is approximately normal to the trench, and sediments of the Shikoku Basin are actively accreting at the deformation front. The Nankai Trough is among the most extensively studied subduction zones in the world, and great earthquakes during the past 3000 or more years are well documented in historical and archaeological records (e.g., Ando, 1975). The Nankai Trough has been selected as a focus site for studies of seismogenesis by both IODP and the U.S. MARGINS initiative, based on the wealth of geological and geophysical data available, a long historical record of great ( $M > 8.0$ ) earthquakes, and direct societal relevance of understanding tsunamis and earthquakes that have had, and will have, great impact on nearby heavily populated coastal areas.

The Kumano Basin region, off Kii Peninsula (Fig. **F1A**, **F1B**), was chosen for drilling based on three criteria: (1) the updip end of the seismogenic zone is well defined based on slip in past great earthquakes, (2) seismic imaging presents clear drilling targets, and (3) deep targets are within the operational limits of riser drilling by the *Chikyu* (i.e., maximum of 2500 m water depth and 7000 mbsf). In the Kumano Basin, the seismogenic zone lies at ~6000 mbsf (Nakanishi et al., 2002). Slip inversion studies suggest that only in this area of the Nankai Trough did past coseismic rupture clearly extend shallow enough for drilling (Ichinose et al., 2003; Baba and Cummins, 2005),

and an updip zone of large slip (a potential asperity) has been identified and targeted (Fig. F1B). Coseismic slip during events like the 1944 Tonankai M 8.2 earthquake likely occurred on the megasplay fault rather than on the décollement beneath it, though slip on either plane is consistent with the available data. The megasplay fault, therefore, is a primary drilling target equal in importance to the basal décollement zone.

The region offshore the Kii Peninsula on Honshu Island has been identified as the best location for seismogenic zone drilling for several reasons. First, the rupture area of the most recent great earthquake, the 1944 Tonankai event, is well constrained by seismic and tsunami waveform inversions (e.g., Tanioka and Satake, 2001; Kikuchi et al., 2003). A horizon of significant coseismic slip is reachable by drilling with the *Chikyu*. Second, the region offshore the Kii Peninsula is generally typical of the Nankai margin in terms of heat flow and sediment on the incoming plate. This is in contrast to the area offshore Cape Muroto where previous Deep Sea Drilling Project and Ocean Drilling Program (ODP) drilling has focused and where both local stratigraphy associated with basement topography and anomalously high heat flow have been documented (Moore, Taira, Klaus, et al., 2001; Mikada, Moore, Taira, Becker, Moore, and Klaus, 2005). Third, ocean bottom seismometer campaigns and onshore high-resolution geodetic studies (though of short duration) indicate significant interseismic strain accumulation (e.g., Miyazaki and Heki, 2001; Obana et al., 2001).

As noted above, the megasplay, a large OOST, branches from the master décollement ~50 km landward of the trench along the drilling transect and forms the trenchward boundary of the Kumano Basin. This forearc basin is filled by turbiditic sediments with a maximum thickness of ~2000 m. A pronounced continuous ridge of topography extending >120 km along strike is evident in swath-bathymetric and multichannel seismic data and is likely related to splay fault slip. Remotely operated vehicle (ROV) and submersible surveys reveal a very steep slope on both sides of the ridge, suggesting recent activity (Ashi et al., 2002, unpubl. data). This fault has been termed a megasplay because it differs markedly from other OOSTs in several respects:

- It is continuous along strike, is associated with a significant break in seafloor slope, and is a strong seismic reflector, suggesting that it is a first-order structural element of the margin.
- Significant long-term slip is documented by sequence boundaries and progressive landward tilting of strata in the Kumano Basin as observed in seismic reflection data (Fig. F2).

- The megasplay separates rocks with significantly higher seismic velocity on its landward side from rocks of lower seismic velocity toward the trench, suggesting that it represents a major mechanical discontinuity (Nakanishi et al., 2002).
- It is geographically coincident with the updip termination of slip during the 1944 Tonankai event, as inferred from tsunami (Tanioka and Satake, 2001) and seismic (Kikuchi et al., 2003) waveform inversions, and recent structural studies indicate that it may have experienced coseismic slip (e.g., Park et al., 2002).

Mechanical arguments further suggest that the megasplay is the primary coseismic plate boundary near the updip terminus of slip (e.g., Kame et al., 2003; Wang and Hu, 2006).

Subduction zones like the Nankai Trough, on which great earthquakes ( $M > 8.0$ ) occur, are especially favorable for study because the entire width (dip extent) of the seismogenic zone ruptures in each great event, so the future rupture area is perhaps more predictable than for smaller earthquakes. The Nankai Trough region is among the best-studied subduction zones in the world. It has a 1300 y historical record of recurring and typically tsunamigenic great earthquakes, including the 1944 Tonankai M 8.2 and 1946 Nankaido M 8.3 earthquakes (Ando, 1975; Hori et al., 2004). The rupture area and zone of tsunami generation for the 1944 event are now reasonably well understood (Ichinose et al., 2003; Baba et al., 2006). Land-based geodetic studies suggest that the plate boundary thrust here is strongly locked (Miyazaki and Heki, 2001). Similarly, the relatively low level of microseismicity near the updip limits of the 1940s earthquakes (Obana et al., 2001) implies significant interseismic strain accumulation on the megathrust; however, recent observations of very low frequency earthquake event swarms apparently taking place within the accretionary prism in the drilling area (Obara and Ito, 2005) demonstrate that interseismic strain is not confined to slow elastic strain accumulation.

The outer accretionary wedge seaward of the 1944 earthquake seismogenic zone is characterized by strongly deformed fold-and-thrust belts above the aseismic plate boundary. Similar spatial and geometric relationships are commonly observed at other accretionary prisms (Plafker, 1972). The mechanical relationship between great earthquake slip in seismogenic zones and slip and deformation in the outer wedge is not well understood. However, Wang and Hu (2006) proposed that the forearc region can be described as a “dynamic critical wedge,” and recent discoveries of low frequency events within the accretionary wedge (Ito and Obara, 2006) suggest that deformation and slip may occur episodically as both high-frequency postseismic events

or as much lower frequency “slower” interseismic events. These factors contribute to both the evolution of the margin architecture and to the behavior of the system today (e.g., Park et al., 2002).

## Seismic studies and site survey data

A significant volume of site survey data has been collected in the drilling area, including multiple generations of two-dimensional seismic reflection (e.g., Park et al., 2002), wide-angle refraction (Nakanishi et al., 2002), passive seismicity (e.g., Obara et al., 2004), heat flow (Yamano et al., 2003), side-scan sonar, and swath bathymetry and submersible and ROV dive studies (Ashi et al., 2002). In 2006, Japan and the United States conducted a joint three-dimensional (3-D) seismic reflection survey over a ~11 km × 55 km area, acquired by PGS Geophysical, an industry service company. This 3-D data volume is the first deep-penetration fully 3-D marine survey ever acquired for basic research purposes and has been used to refine selection of drill sites and targets, define the regional structures and seismic stratigraphy, analyze subsurface physical properties through seismic attribute studies, and assess drilling safety. Further, these data will be used in conjunction with physical properties and geophysical data obtained from core analyses and LWD to allow extensive and high-resolution integration of core, logs, and seismic data.

## Scientific objectives

The first target of Expedition 316 was the shallow portion of the megasplay fault system, just seaward of the break in slope marking the boundary between the inner and outer accretionary wedge (Fig. F2). The scientific objectives of drilling the shallow portion of the megasplay fault system are

- To clarify the character and behavior of the shallow portion of the megasplay:
  - Is the megasplay an active blind thrust or an inactive fault?
  - Is there evidence for past seismogenic slip, supporting contention that the megasplay is the primary candidate for the source of great earthquakes and tsunamis?
- To clarify the slip and deformation mechanisms in the region above the (inferred) unstable seismogenic fault;
- To clarify the relationship between fluid behavior, slip, and deformation along the megathrust; and

- To clarify the evolutionary development of the splay fault.

Two sites were drilled to investigate the shallow region of the megasplay. Site C0004 was selected during Expedition 314 (LWD) as an alternate to Site C0003 (proposed Site NT2-01B), where the target could not be reached (Kinoshita et al., 2008). Site C0004 was projected to cross the splay fault at a depth of ~300 mbsf; total depth (TD) was 400 mbsf in order to sample the underthrust material. Site C0008 was originally proposed as a contingency site (proposed Site NT2-10). This site was selected as the last site of Expedition 316 because it represented the best balance between science objectives and time available (Fig. F3). Cores from Site C0008 will allow evaluation of the material eroded from thrust blocks following uplift to the surface via faulting on the megasplay system. Results will help to assess the timing and relative age of past fault motions via identification of provenance and age of deposited material and the age across any unconformities between newly deposited sediments and older uplifted fault blocks. Numerous postcruise studies of fault and wall rock frictional properties will test ideas about fault zone strength and sliding stability. The permeability and geotechnical properties of this material will also help interpretation of the fluid flow and consolidation response to splay fault movement as the slope basin sediments are progressively underthrust.

The second target of Expedition 316 was the main frontal thrust at the seaward edge of the accretionary wedge (Fig. F4). Based on seismic data and submersible studies, this thrust is thought to have placed moderately consolidated ~2 Ma clastic rocks over weak and unlithified late Quaternary trench section clastic sediments (Ashi et al., 2002). Two sites were drilled in this area to achieve the following objectives:

- Clarify the function of the frontal thrust with respect to large earthquakes:
  - Do great earthquakes trigger slip along this fault plane, and if so, are they tsunamigenic?
  - Does the frontal thrust generate low-frequency events or does it creep during the interseismic period?
- Evaluate the relationship between fluid behavior and slip and deformation.
- Assess the evolution of the frontal thrust from its birth to death.

Core samples collected during Expedition 316 allow description of lithology and structure, provide age control through paleontological and paleomagnetic analysis, and provide samples for interstitial water, microbiology, and shipboard and post-cruise physical property and geotechnical studies. In situ temperature measurements

provide an important control for thermal models of the subduction zone. The ship-board and postcruise results, when integrated with other NanTroSEIZE expeditions, will characterize physical properties, strength, frictional properties and behavior, composition, and structure of the slope sediments, hanging wall, and footwall of the splay fault and frontal thrust. Development of the fault zones at shallow depths will also be compared to drilling of the splay fault at greater depths at Sites C0001 and C0002 in later NanTroSEIZE expeditions.

## Principal results

### Site C0004

Site C0004 (proposed Site NT2-01I) targeted the uppermost 400 m at the seaward edge of the Kumano Basin uplift (outerarc high) where the megasplay fault system branches and approaches the surface. This site penetrated the toe of a thrust wedge in the hanging wall of the megasplay fault system. The scientific objectives of drilling into the shallow portion of the megasplay fault were

1. To clarify the character and behavior of the shallow portion of the megasplay;
2. To characterize the slip, deformation mechanisms, and evolution in the stable region seaward of the unstable seismogenic fault; and
3. To investigate the relationship between fluid behavior, slip, and deformation along and adjacent to the megasplay fault zone.

Four lithologic units were defined at this site during Expedition 316 (Fig. F5). The uppermost unit (lithologic Unit I; 0–78.08 m core depth below seafloor [CSF; IODP Method A: core expansion lengths overlap (are not scaled)]) is dominated by greenish gray silty clay with a substantial component of calcareous nannofossils (up to ~25%) and a lesser amount of siliceous biogenic debris (sponge spicules, diatoms, and radiolarians). Unit I is interpreted to have been deposited from the early Pleistocene to the late Pleistocene as a sediment blanket on the upper slope mainly by hemipelagic settling with minor volcanic ash and sand-silt input. An observed gradual increase in carbonate content upsection is consistent with greater carbonate dissolution at depth and implies that the unit was slowly uplifted to its present water depth of 2632 m. At 78.08 m CSF, an angular unconformity separates Units I and II; this unconformity was predicted by seismic reflection and LWD data (Kinoshita et al., 2008). A significant age gap is indicated by both paleomagnetic and nannofossil data. Below the unconformity, the age of Unit II (78.06–258.01 m CSF) ranges from late Pliocene to middle

Pliocene. The uppermost part of Unit II strata (Subunit IIA) consists mainly of sedimentary breccia with silty clay clasts that most likely result from deposition of slumps and mass wasting along an unstable slope. The dominant lithology in Subunit IIB is dark greenish gray silty clay. The low carbonate content of Unit II is consistent with deposition at much greater depths than its present setting, presumably near or below the calcite compensation depth.

Unit III is a middle Pliocene structurally bounded package that hosts the brittle deformation of the splay fault zone. A biostratigraphic age reversal across the boundary between Units II and III suggests that the lithologic change to slightly more calcitic and ash-bearing sediments corresponds to a fault contact. A larger age reversal is found at the lower boundary between Units III and IV at 307.52 m CSF. Shipboard sedimentological observations are not able to resolve whether this Pliocene fault-bounded sedimentary package is more closely related to the overlying slightly older Pliocene prism sediments or the underlying slope basin sediments. Unit IV (307.52 m CSF to the bottom of Hole C0004D at 403 m CSF) is early Pleistocene in age and consists of dark olive-gray silty clay with a moderate amount of calcareous nannofossils and a lesser amount of calcareous and siliceous microfossils. It is interpreted to have formed in a lower trench-slope basin, dominated by fine-grained hemipelagic deposition with relatively minor sand input.

Structural observation of the upper slope sediments (Unit I) indicates southeast-dipping beds and normal faults (Fig. F5). Between 100 and 256 m CSF, faults and deformation bands are locally observed within the fragments of drilling-induced breccias, indicating deformation within the accretionary prism. In addition, sediment-filled veins (vein structures) are observed within the fragments, although these are rare. In most cases, faults cut and offset shear zones and have a reverse sense of shear with their displacement less than a few millimeters. A ~60 m thick fractured and brecciated zone is observed between 256 and 316 m CSF; this zone contains two age reversals identified by biostratigraphy. The upper boundary is marked by the abrupt occurrence of brecciated fragments with polished and slickenlined surfaces below 256 m CSF. The lower termination of this zone was defined at 315 m CSF, based on a gradual increase of unbroken rock intervals in which subhorizontal bedding and fissility are well preserved.

The seismic reflection profile suggests that the projected depth of the splay fault is ~290 mbsf. Based on recovered cores, fractured rocks and drilling-induced breccias are widely distributed in the fault zone, whereas fault breccia and microbreccia have rel-



actively limited distribution. At 291 m CSF, a 6 cm thick microbreccia is bounded above and below by fault breccia ~50 cm thick, which in turn is bounded above and below by fractured rocks. The localized comminution in microbreccia zones contrasts with distributed deformation in fractured rocks and fault breccia. There is no obvious evidence of fluid-rock interaction (e.g., mineralized veins or alteration) in the fault zone. Microbreccia possibly represents a zone of concentrated shear within the splay fault-related zone. However, the location of microbrecciation does not correlate with the two inversions of biostratigraphic age. The borehole image analysis of the structurally defined fault zone (depth shifted between Holes C0004B and C0004D) shows that electrically conductive fractures are relatively highly concentrated in these intervals. The presence of conductive fractures and/or highly deformed material associated with the concentrated shear may have caused the poor recovery within these intervals. The underthrust slope basin sediments show horizontal to gently dipping bedding and fissility, which is consistent with the bedding dips acquired by the borehole images at this site during Expedition 314 and the seismic reflection profile. Steeply dipping faults are sporadically distributed in the underthrust sediments; their random orientations suggest a lack of tectonic influence associated with plate convergence.

Shipboard measurement of moisture and density indicate that porosity decreases slightly, from ~65% at the seafloor to 59% at 78 m CSF (Fig. F5). A discontinuity in porosity at ~78 m CSF is related to the unconformity between the younger less compacted slope sediments and the older, more compacted Pliocene prism sediments. Within Unit II, porosity slowly decreases with depth, from ~53% at the top of Unit II to ~49% near the bottom. Within Unit III, a region of faulted and brecciated rocks, porosities are scattered over the range 46%–59% with no clear trend. These perhaps higher-than-expected values of porosity may be due to its younger age compared to the lower half of Unit II or pervasive crack/damage porosity within the fault zone. At the thrust fault boundary between Units III and IV, porosities abruptly decrease from ~50% to 43% despite the biostratigraphic evidence that the underlying sediments of Unit IV are significantly younger than those of Unit III.

Within the underthrust sediments, *P*-wave velocity anisotropy is consistent with dominantly vertical compaction (vertical minimum velocity and high maximum and intermediate velocities within the bedding plane). This type of fabric might be present over most of the depth range of the underthrust sediments except in zones where interrupted by mechanical deformation such as fracturing or faulting. However, the anisotropy data could also be consistent with bed-parallel shear of the underthrust

sediments. The electrical conductivity data appear to correlate with the *P*-wave velocity data.

The average thermal conductivities are 1.02, 1.09, and 1.50 W/(m·K), for Units I, II, and IV, respectively. Downhole temperature was measured at four depths between 25.4 and 135.0 m CSF. Equilibrium temperatures plotted as a function of depth are relatively linear, and coupled with the average bottom water temperature, give a least-squares gradient of 52°C/km. A constant conductive heat flow appears to describe the overall thermal structure quite well.

The intensities of natural remanent magnetization (NRM) span more than two orders of magnitude, ranging from 0.02 to 80 mA/m. NRM intensity peaks at 352.7 m CSF, corresponding to silty clay with interbedded volcanic sand. Magnetic susceptibility values are generally  $\sim 10 \times 10^{-3}$  SI within Units I–III and rapidly decrease and then increase within the breccia observed in Subunit IIA (Fig. F5). These susceptibility variations were verified by further measurements of corresponding discrete samples. Magnetic susceptibility is significantly higher within the underthrust slope basin deposits of Unit IV, which contain volcanic and sand layers.

The pore fluid profiles in the upper 30 m of the sediment column are dominated by microbially mediated reactions, and the sulfate–methane transition (SMT) is reached between 16 and 20 m CSF. Below this depth, downhole increases in Cl, Na, and H<sub>4</sub>SiO<sub>4</sub> concentrations and decreases in Mg, B, K, and Rb concentrations are interpreted to be caused by alteration of volcanic ash to authigenic clay minerals and zeolites (Fig. F5). At 248, 306.7, and 344 m CSF, sharp increases in the concentrations of H<sub>4</sub>SiO<sub>4</sub>, ammonium, and Mn, as well as decreases in Mg, K, and Rb concentrations, suggest the possibility of recent or current focused flow of fluids from greater depth. These increases are observed ~8 m above, within, and 29 m below the structurally identified splay fault zone. A decrease in the K and Mg data is also evident at 50 m CSF. Given the reactive nature of these ions in pore fluids, these spikes may be caused by diagenesis; postcruise research will examine whether these are diagenetic signatures or related to fluid flow. The chemistry of the fluids sampled along these horizons is strikingly similar to that of fluids sampled at the base of Site C0001, drilled upslope from Site C0004 during IODP Expedition 315 (Ashi et al., 2008). Methane shows spikes of elevated concentrations within Unit III and near the top of Unit IV (Fig. F5); however, core recovery and brecciation may greatly influence observed measured methane concentrations.

Under epifluorescent microscopy, very high numbers of microbial cells were observed in core sediments at Site C0004 (Fig. F5). The cell populations slightly decreased with depth to 150 m CSF and slightly increased at ~280 m CSF in the splay fault zone. Cell populations then sharply decreased below the splay fault zone.

## Site C0006

Site C0006 (proposed Site NT1-03B) targeted the main frontal thrust at the seaward edge of the accretionary wedge (Fig. F4). The scientific objectives of drilling at Site C0006 were

1. To clarify the evolution of the frontal thrust from its birth to death,
2. To clarify the function of the frontal thrust with respect to large earthquakes, and
3. To evaluate the relationship between fluid behavior, slip, and deformation within this fault zone.

Site C0006 was previously drilled during Expedition 314 (Kinoshita et al., 2008), in which LWD logs were obtained to 885.5 m LWD depth below seafloor (LSF). During Expedition 316, coring was completed to 603 m CSF. Poor hole conditions stopped drilling at this site before the frontal thrust was reached.

Three lithologic units were recognized during examination of cores from Site C0006 (Fig. F6). Lithologic Unit I is Pleistocene in age and extends from the seafloor to 27.23 m CSF. Unit I consists of a fining-upward succession of silty clay, sand, silty sand, and rare volcanic ash layers. Deposition is interpreted to have occurred on the lowermost slope above the trench floor by hemipelagic settling, turbidite deposition that decreased through time, and accumulation of a thick ash near the base of Unit I. An age gap between Units I and II suggests that the contact is an unconformity that formed during the uplift of underlying sediments.

Unit II (27.23–449.67 m CSF) is Pleistocene in age and is interpreted as having been deposited in a trench setting, with increasing proximity to the axial portion of the trench upsection. Subunit IIA (27.23–72.06 m CSF) is dark gray to black fine-grained sand, consisting dominantly of metamorphic and volcanic lithic fragments with secondary quartz and feldspar. Individual sand beds (~1–7 m thick) typically grade into silt and sometimes silty clay with indistinct boundaries between the different lithologies. Subunit IIB (72.06–163.33 m CSF) consists of interbedded fine-grained sand, silty sand, and silty clay in approximately equal abundances. Assessment of this subunit was hampered by poor core recovery, possibly indicating substantial loss of the

sand units indicated by LWD logs (Kinoshita et al., 2008). Sand intervals are typically normally graded with indistinct upper boundaries that grade into silty clay. The silty clay is greenish gray and is only slightly bioturbated or mottled in places. An age reversal within Zone NN19 was identified at the lithologic boundary between Subunits IIB and IIC. This reversal is attributed to thrust faulting, although no major fault zone was identified based on structural description of the cores from this depth. The dominant lithology in Subunit IIC (163.33–391.33 m CSF) is greenish gray silty clay, and minor lithologies include normally graded silt, sand, and rare ash. Of the siliciclastic beds, silt is generally more abundant than sand, particularly when compared to Subunit IIA.

The dominant lithology of Subunit IID (391.33–449.67 m CSF) is greenish gray silty clay, and minor lithologies include silt and ash. Silt layers are thin-bedded and are relatively rare in this section, becoming absent below 405 m CSF. Sand is completely absent from this subunit, and ash layers are relatively abundant in comparison with overlying units. A short time gap (~0.17 m.y.) was found between 434.71 and 439.50 m CSF. A longer time gap or unconformity (~1 m.y.) was found at the boundary between Units II and III.

Unit III is late Miocene–early Pleistocene in age and consists of greenish gray to grayish silty clay with some interbedded volcanic ash, including dolomite- and calcite-cemented ash. Unit III has an overall increased clay content and decreased quartz and feldspar content compared to the overlying sediments. Unit III was deposited by hemipelagic settling along with accumulation of volcanic ash. The Miocene–early Pleistocene age and lithologic content of Unit III are similar to the Shikoku Basin facies documented at ODP Sites 1173 and 1174 in the Muroto transect more than 100 km to the west-southwest along the Nankai Trough (Shipboard Scientific Party, 2001a, 2001b).

Structural geology observations indicate that most bedding surfaces in Unit I strike north–south to northwest–southeast and dip westward. Between 15 and 35 m CSF, these sediments are affected by normal faults striking north–south to northwest–southeast and dipping steeply with offsets <10 cm. The strikes of bedding or fissility surfaces in the accretionary prism sediments (below 27 m CSF) are variable, and no preferred direction is apparent. Between 28 and 31 m CSF, the sediments are cut by two reverse faults showing very small offsets (<1 cm).

A broad fractured/brecciated zone extends from 230 to 545 m CSF (Fig. F6). In this zone, cores are commonly strongly fractured, striated or polished planes are common, and tectonic breccias were identified. In contrast, the sections above or below this fractured and brecciated interval are more coherent and less fractured and generally do not include tectonic breccias. The transition between the fractured/brecciated zone and the underlying sections appears to be sharp. Deformation bands are observed in cores between 300 and 460 m CSF with a clear predominance between 300 and 405 m CSF. Within this section, most deformation bands dip  $>30^\circ$ , and the sense of shear is reverse. These bands predominantly strike about northeast–southwest and dip either northeastward or southwestward, forming two sets with an apparent conjugate geometry. Given the reverse sense of slip observed along these deformation bands, this geometry suggests a shortening axis that is horizontal and oriented along  $138^\circ$ .

Concentrated zones of deformation occur at 235–243, 277–297, 367.5–369.5, 433.75–440, and 533–543 m CSF (Fig. F6). These zones contain greater densities of deformation bands, fractures, and tectonic breccias. The lowermost interval (533–543 m CSF) contains a progression from tectonic breccia to micro-breccia and then fault gouge. The sediments recovered in the 545–603 m CSF interval, which consist of bioturbated hemipelagic mud (Unit III), are less fractured or brecciated than observed above. Normal faults predominate in this interval, and the dip angles of fault planes are scattered between  $20^\circ$  and  $88^\circ$ , but steep angles predominate. No preferred orientation of fault plane directions can be recognized.

A notable feature of the porosity profile at Site C0006 is that near-surface ( $>5$  m CSF) porosities are quite low, averaging  $\sim 48\%$  (Fig. F6); this suggests the possibility of erosion of overlying material. From  $\sim 5$  to 410 m CSF, porosities gradually decrease with depth from  $\sim 48\%$  to  $\sim 38\%$ . Between  $\sim 410$  and  $\sim 450$  m CSF, porosities increase from  $\sim 39\%$  to  $\sim 49\%$  and reach the highest porosities ( $\sim 50\%$ ) between  $\sim 450$  and 490 m CSF. This interval includes a zone of deformation at 433.75–440 m CSF, raising the possibility that elevated porosity results from microcracks and other fault-related damage within the samples or that sediments in this zone are underconsolidated because of elevated fluid pressures. The observed increase in porosity is also coincident with an increase in clay content, which could contribute to low permeabilities and encourage undercompaction. Alternatively, if the clay contains interlayer water, the apparent porosity change could partially reflect interlayer water that cannot be distinguished from pore water in the moisture and density measurements. Porosity values that are corrected postcruise to account for hydrous clay content will shed light on this pos-

sibility. From ~475 to 570 m CSF, porosities decrease from ~49% to ~40%, reaching values at 570 m CSF that are in good agreement with the extrapolated porosity trend observed from 5 to ~410 m CSF.

Electrical conductivity exhibits an overall decrease with depth but increases at ~410 m CSF, mimicking the change in porosity. Electrical conductivity anisotropy values show considerable scatter at depths shallower than 300 m CSF; between 300 and 400 m CSF, the transverse anisotropy decreases with depth. This observation, coupled with the decrease of electrical conductivity magnitude, suggests progressive horizontal compaction. *P*-wave velocity generally increases with depth through the hole. The anisotropy of *P*-wave velocity data shows a general decrease with depth with two discrete zones of higher transverse anisotropy at ~400 and ~480 m CSF.

Vane shear measurements of shear strength increase rapidly through the uppermost 40 m CSF, below which measured shear strength drops rapidly and is associated with the prevalence of sandy beds, where the measurement technique might not be suitable because of drained conditions in the sand. The boundary between Subunits IIA and IIB is coincident with an increase in shear strength at 72 m CSF. A similar increase at 110 m CSF does not appear to be concurrent with a significant lithologic change. Shear strength continues to increase to 200 m CSF. Between 200 and 275 m CSF is an apparent decrease in the shear strength.

Thermal conductivities from the seafloor to ~80 m CSF show a striking positive excursion through Units I and IIA that likely reflects higher sand content through this interval. A negative trend in thermal conductivity through Subunit IIA likely reflects a decrease in sand content. Between ~80 and 400 m CSF, thermal conductivity values generally increase and likely reflect decreasing porosity. Thermal conductivity in Unit III increases with depth but is offset to lower values relative to the trend through Subunits IIB and IIC. Downhole temperature was measured using the both the advanced piston coring temperature tool (APCT3) and Davis-Villinger Temperature Probe (DVTP). The best fitting thermal gradient through the first six measurements is 27°C/km. The very low thermal gradient gives rise to an anomalously low heat flow value.

Paleomagnetic measurements indicate that the mud in Unit III has the lowest NRM intensity (averaging ~0.1 mA/m) compared to turbiditic Unit II (~12 mA/m) and nanofossil-bearing mud and sand of Unit I (~2 mA/m). Variations in magnetic susceptibility generally parallel the variations in NRM intensity. Magnetic susceptibility values are generally  $\sim 19 \times 10^{-3}$  SI for sediments in Unit I,  $>200 \times 10^{-3}$  SI for Unit II,

and  $12 \times 10^{-3}$  SI for Unit III (Fig. F6). A few discrete peaks of higher NRM and susceptibility values appear at some depth intervals in Units I and II, which can be tied directly to the visible presence of volcanic sand in these regions.

The pore fluid profiles in the upper ~60 m of the sediment column are dominated by microbially mediated reactions, and the SMT is reached at 8–12 m CSF. The relatively shallow SMT at this site suggests an elevated upward methane flux; coupled with anomalously low heat flow, this provides ideal conditions for gas hydrate formation in the sediment. Assuming equilibrium with Structure I gas hydrate, the gas hydrate stability field extends from the seafloor to ~800–850 mbsf. Dissociation of disseminated gas hydrates within the sediment pore space during recovery is suggested by pore fluid Cl concentrations that gradually decline from 571 to 540 mM at depths of ~100–500 m CSF (Fig. F6). Assuming that all the hydrate dissociates during core recovery and handling, the gradual decrease in pore fluid Cl with depth indicates that gas hydrate concentrations, though overall very low, increase with depth. Estimated pore space gas hydrate concentrations range from negligible to <2% within the sediment column. Superimposed on the gradual decline in Cl concentrations are three Cl minima at 76, 292, and 570 m CSF that indicate horizons of elevated gas hydrate occurrence; however, the concentrations at these depths are still relatively low, comprising less than ~5% of the sediment pore space.

The pore fluid geochemical profiles are relatively smooth through the deformation zone at Site C0006 (Fig. F6). No local maxima or minima are coincident with the faults described at Site C0006. Thus, pore water chemistry provides no indication of fluid flow along these fault zones. From ~450 m CSF to the base of the hole at ~600 m CSF, many of the pore fluid chemical profiles (e.g., Mg, Ca, Li, K, Rb, Cs, B, and Mn) change distinctly. These geochemical variations could reflect diagenetic reactions because of the higher clay content or the greater age of the pore fluids in the Miocene sediments of Unit III. Another possibility is that these fluids reflect mixing or diffusion with a fluid originating deeper than the base of Hole C0006F.

The depth profile of methane below 14 m CSF decreases throughout the sediment column, except for two peaks at ~100 and 310 m CSF (Fig. F6). These increased methane values could be related to the destabilization of gas hydrates and the consequent release of methane into the sediment. Ethane was detected in low amounts in the sediment at depths below 76 m CSF. Higher molecular weight hydrocarbons were not detected at Site C0006. Except for a few enrichments, the total organic carbon (TOC) remains low throughout the core (average = 0.46 wt%). Total nitrogen (TN) is highest

in Unit III, perhaps because of clay-bound nitrogen substances. The ratio of TOC and TN (C/N) averages ~7.0, indicating that the organic matter at Site C0006 is mainly of marine origin. The concentration of total sulfur (TS) in the sediments is generally low with a mean value of 0.25 wt%.

Preliminary microbial cell abundances were enumerated by visual inspection (Fig. F6). At Site C0006,  $\sim 10^9$  cells/cm<sup>3</sup> were detected in the upper sedimentary unit above 100 m CSF. The porous sand layers in the upper unit harbor abundant microbial populations, suggesting that the environment is rich in available energy sources and habitable space. The potential energy sources in the sand layers are probably buried consumable organic matter (e.g., organic acids). Below the upper sedimentary unit, the population decreased with increasing depth in the accretionary prism with no or very small proliferation of cell abundance observed at sand layers or lithologic boundaries. Generally, the microbial population in the accretionary prism at Site C0006 was found to be low ( $10^7$  cells/cm<sup>3</sup>), suggesting that the accretionary prism at Site C0006 may be a harsh and energy-starved habitat for subseafloor life. This is in clear contrast to the accretionary prism at Site C0004, where relatively high biomass is present throughout the cored materials.

## Site C0007

Site C0007 (proposed Site NT1-03A) targeted the main frontal thrust at the seaward edge of the accretionary wedge (Fig. F4). This site was drilled during Expedition 316 after hole conditions at Site C0006 precluded reaching the frontal thrust.

Four lithologic units were identified at Site C0007 (Fig. F7). The uppermost (lithologic Unit I; 0–33.94 m CSF) consists of hemipelagic silty clay with interbedded sand. Deposition of this unit is interpreted to have occurred on the lowermost slope above the trench floor by hemipelagic settling, turbidite deposition, and possibly subsequent soft-sediment slumping on an oversteepened slope.

The top of Unit II is placed at the first occurrence of a thick interval of dark sand. Unit II (33.94–362.26 m CSF) constitutes a coarsening-upward succession from fine-grained mud to sand- and gravel-rich deposits. Unit II is interpreted to have been deposited in a trench setting with increasing proximity to the axial portion of the trench upsection. Repetition of coarser facies, interpreted as axial-channel fill, indicates either a repetition of the sequence because of thrust faulting or switching of the position of the trench channel because of advancement of the thrust front or major



slumping of the rapidly steepened frontal slope. Biostratigraphy suggests a possible age reversal below 135 mbsf in Hole C0007C (within Unit II) and a significant age gap between Units II and III.

Unit III (362.26–439.44 m CSF) is a Pliocene succession of green bioturbated fine-grained hemipelagic sediments. Thin (<1 cm) greenish layers, reworked glauconite, and pervasive burrowing suggest that low sedimentation rates attended the deposition of this lowermost mud. Small ash layers and dispersed ash made of clear glass and pumice are observed throughout the section but are especially abundant within the lowermost portion of Unit II and in Unit III. Unit III was deposited by hemipelagic settling with accumulation of volcanic ash; its characteristics are consistent with the Shikoku Basin facies as documented in the western Nankai Trough (Shipboard Scientific Party, 2001a, 2001b).

Unit IV is of possible Pleistocene age based on its correlation on seismic profiles with the active trench wedge of the Nankai Trough to the southwest of Site C0007. Only 25 cm of dark gray sand and a few drilling-affected mud fragments were recovered. The presence of thick unconsolidated sand is also suggested by the significant increase of drilling penetration rate below 439 m CSF. The sand is fine to medium grained and consists of abundant black lithic fragments, metamorphic rock fragments, ferromagnesian minerals, quartz, feldspar, and opaque grains. Nannofossil dating of Unit IV was not possible as it was either potential fall-in material or a sand slurry that did not yield nannofossils.

Structural geology observations describe slump-related features (e.g., disaggregated or chaotically mixed bedding) in the upper portion of Hole C0007C. Bedding dips between 20° and 70° to the southeast in Unit I, which is in contrast to gently dipping beds in the prism below (Fig. F7). In places, faults offset bedding with normal or reverse sense of shear and displacement of less than a few centimeters, and faults show scattered orientations after paleomagnetic correction. Sandy layers are locally disturbed and form inclusions in the muddy matrix, or in the extreme case, sandy layers are chaotically mixed with the muddy layers.

Bedding and fissility dip gently (0°–30°) throughout the prism sediments at Site C0007. Bedding-oblique deformation bands show a conjugate geometry of reverse slip associated with northwest-directed layer-parallel contraction. Two types of healed faults are observed in bioturbated hemipelagic mud: a parallel to bedding type, and a type defined by randomly oriented normal faults.

Three fault zones were recognized in cores recovered from Hole C0007D. A fault zone at 237.5–259.3 m CSF is related to a thrust that brings mud onto sand. Fault breccias in this fault zone are 17–19 cm thick and are characterized by angular to subangular fragments 1–10 mm. The brecciated fragments are commonly polished and slicken-lined and lineations indicate multiple slip directions. Occurrence of three similar ash layers in this fault zone could indicate repetition of the same layer by thrust faulting and needs to be confirmed by postcruise research.

A fault zone at 341.5–362.3 m CSF is located where the lithology changes from mud (Unit II) to bioturbated hemipelagic mud (Unit III). The location of this zone is comparable to the interval where a subhorizontal strong reflector is recognized in a nearby seismic line (Fig. F4) and an age gap is noted by the biostratigraphy. This fault zone consists mostly of fractured rocks characterized by fragmentation along sets of polished and striated surfaces. Concentration of deformation at the bottom of the fault zone is indicated by occurrence of breccia and fault gouge. Fault breccia includes subangular to rounded fragments of ~1 mm to 2 cm in size and a random texture. Fault breccia is replaced by fault gouge at 362.1 m CSF. This is marked by a decrease in size and volume fraction of fragments to <2 mm and 30%, respectively. Fault gouge is weakly foliated and the angle between a foliation defined by alignment of fragments and the horizontal plane is 38°. Deformation bands are concentrated above fault Zone 2 and band kinematics show reverse slip associated with northwest-directed contraction. Deformation bands are absent below fault Zone 2, but healed faults are well developed and show normal slip consistent with vertical compaction of sediments during burial. The changes in deformation style and kinematics of structures across the fault zone, as well as the asymmetric distribution of fractured rock, suggest that the major slip zone is located at the bottom of the fault zone, possibly represented by the fault breccia/fault gouge zone.

Fault Zone 3 is located at the basal part of the prism above the frontal thrust that juxtaposes the hemipelagic mud (Unit III) above and sand-dominated sediments (Unit IV) below. This zone is marked by a heterogeneous distribution of fractures, commonly with polished and slickenlined surfaces and brecciation. A foliated fault gouge was observed at 418.83–418.94 m CSF with a shear sense consistent with thrust faulting. The lowermost part of the fault zone at 438.28–438.57 m CSF is intensely brecciated into fragments ~1–10 mm in size. This 29 cm thick breccia shows a foliated aspect from an anastomosing network of polished and striated surfaces. At the base of this zone, the 2 mm thick dark layer sharply separates intensely brecciated hemipelagic mud above from unbroken hemipelagic mud and ash below. There is a bio-

stratigraphic age reversal across the lowermost part of the fault zone (Fig. F7). These features indicate that the thin dark layer most likely represents extreme localization of slip associated with thrust faulting. Below this interval recovery was poor; however, additional thrust faulting is inferred from the transition to unconsolidated axial trench deposits (Unit IV).

Porosity decreases rapidly in the uppermost 34 m at this site (Fig. F7). From 34 to 320 m CSF, porosity decreases more gradually from ~48% to ~39% at 320 m CSF, increases from ~39% to ~50% at 400 m CSF, and then decreases to the bottom of the hole. Porosity data reveal no clear discontinuities at depths corresponding to possible faults or at lithologic boundaries within that depth range. The major discontinuity in the porosity versus depth trend at ~320 m CSF occurs within Unit II and coincides approximately with the top boundary of fault Zone 3 (~399 to ~446 m CSF). The zone of highest porosity (~50%) between ~360 and ~400 m CSF may be bounded by fault Zones 2 and 3. This zone of elevated porosity likely results from higher densities of microcracks and other fault-related damage. Lithologic analyses reveal that Unit III exhibits an overall increase in clay content, which could lead to spuriously high values of porosity because the drying process during the moisture and density analysis removes interlayer water from smectite. Alternatively, elevated porosities in this zone could indicate that these sediments are underconsolidated (and therefore overpressured), which may have localized shear deformation in this interval and would be consistent with the probable lower permeability associated with higher clay contents. Clays may also decrease permeability of the sediments/rocks in this interval, leading to overpressurization of pore fluids.

*P*-wave velocity values of discrete samples range between 1800 and 2000 m/s. Velocities generally increase to 360 m CSF (the Unit II/III boundary) and then decrease to ~440 m CSF. It is possible that the apparent decrease below 360 m CSF is the combination of a *P*-wave velocity offset (about -100 m/s) because of lithologic changes or thrust faults observed at ~430–440 m CSF. The electrical conductivity data appear to be inversely correlated to the *P*-wave velocity data. Shear strength increases rapidly from the seafloor to 35 m CSF. Shear strength through this interval increases at a much faster rate than at similar depths at Sites C0004 and C0006. Below 35 m CSF, shear strength shows cycles of decreases and increases until it is too consolidated for measurement below 91 m CSF.

Thermal conductivities range from 0.94 to 1.58 W/(m·K). Thermal conductivities increase rapidly from the seafloor to ~50 m CSF, likely reflecting the decrease in porosity

with depth and relatively high sand content. A negative trend in thermal conductivity occurs between ~50 and 75 m CSF, likely reflecting a decrease in sand content. Between ~80 and 400 m CSF, thermal conductivity values fall within a restricted range of values between 1.2 and 1.4 W/(m·K). Downhole in situ temperature was measured using both the APCT3 and sediment temperature tool. The average apparent bottom water temperature is 1.65°C. Equilibrium temperatures as a function of depth are quite linear. The best fitting thermal gradient through the first six measurements is 42°C/km. The least-squares fit to the temperature as a function of thermal resistance indicates a heat flow of 53 mW/m<sup>2</sup> and a bottom water temperature of 2.0°C. The computed heat flow is anomalously low with respect to other values of heat flow in the vicinity of the Kii transect (Yamano et al., 2003), although it is higher than measured at Site C0006.

In the nannofossil-bearing mud and sand cores in Unit I, both the intensity of NRM and magnetic susceptibility increase steadily downhole (Fig. F7). Numerous volcanic ash and sand layers in Unit II have relatively high concentrations of magnetic minerals, causing relatively high NRM intensity (average 15 mA/m) and magnetic susceptibility (~190 × 10<sup>-3</sup> SI units). The mud of Unit III has the lowest NRM intensity (mean ~0.25 mA/m) and magnetic susceptibility (mean ~9 × 10<sup>-3</sup> SI units). Poor recovery of underthrust trench wedge type sand and rocks in Unit IV limits paleomagnetic work, although a few pass-through magnetic susceptibility measurements indicate relatively high susceptibility values.

Pore water analyses indicate that sulfate reduction is relatively rapid in the upper ~20 m of the sediment section of Hole C0007C; however, sulfate never reaches depletion and remains ~8–14mM to the bottom of the hole. In Hole C0007D, sulfate is totally depleted at the start of coring (175 m CSF) with only localized horizons of elevated sulfate. This behavior suggests that the rate of sulfate reduction changes between Holes C0007C and C0007D. In Hole C0007D, there is evidence of gas hydrate occurrence at ~325 m CSF where Cl values are ~10% less than modern seawater and dilution is also observed in the other major ions (Fig. F7).

Within Unit III, Ca, H<sub>4</sub>SiO<sub>4</sub>, Li, and Mn concentrations increase and Cl, alkalinity, Ba, K, and B concentrations decrease. The maxima and minima coincide with the deepest of three fault zones observed in cores from this site (400–420 m CSF). The pore fluid concentrations reverse below 420 mbsf in the lowermost 1–3 samples at this site. There pore water chemical changes within Unit III could result from diagenetic

changes associated with sediment composition above or from fluid flow within the fault zone.

In Hole C0007C, methane concentrations increase with depth but remain low (<50  $\mu\text{M}$ ). The concentration of methane increases from the beginning of coring at 175 m CSF to a maximum of 5.3 mM at ~230 m CSF and decreases below 230 m CSF (Fig. F7). Further light hydrocarbons were only detected in one sample in Hole C0007C, and ethane is very low in Hole C0007D. The methane to ethane ratio indicates a biogenic origin. The amount of calcite is generally very low; the highest values in Hole C0007C (up to ~5 wt%) are observed in Unit I sediments and at ~82 m CSF. At this depth, the highest TOC content (~0.7 wt%) was found for this site. A slight enrichment of TS was found in Unit I at ~6 m CSF. In Hole C0007D, the calcite concentration increases with depth and shows higher amounts below 300 m CSF. The TOC content remains low throughout the sediment column and the C/N ratio indicates marine origin of the organic matter. Except for a peak at ~190 m CSF, TS is low and only increases slightly below ~360 m CSF in Unit III.

Based on fluorescent microscopic observation, the sediments at Site C0007 consistently harbor  $\sim 10^8$  cells/cm<sup>3</sup> (Fig. F7). In the sand layers of the upper sedimentary units, very bright fluorescent signals of SYBR Green I-stained cells were observed, indicating that metabolic activities of microbes are generally high.

## Site C0008

Site C0008 was proposed as contingency Site NT2-10 in an addendum to the Expedition 316 *Scientific Prospectus* (Kimura et al., 2007b). This site examined the basin seaward of the splay fault penetrated at Site C0004. Site C0008 is located ~1 km seaward of Site C0004 (Fig. F3). This contingency site was selected during Expedition 316 because of its good fit within the available time window and the scientific objectives of Expedition 316. Results from this site will allow evaluation of the basin material that was shed from upslope, presumably from thrust blocks uplifted by the megasplay system. Recovered material from this basin will help assess the timing and relative age of past fault motions via identification of provenance and age of basin material. Ages across any unconformities between newly deposited sediments and older uplifted fault blocks will constrain the deformation history. The basin material will provide reference properties for the section overrun by the splay fault. Shipboard and shore-based study of these properties will constrain the fluid flow and consolidation response of the footwall to splay fault movement. Downhole temperature measure-

ments were also collected to assess the thermal gradient and heat flow in this area for comparison with the temperatures recorded at Site C0004.

Two lithologic units were identified at Site C0008 (Fig. F8). The uppermost (lithologic Unit I) consists of a 272 m (in Hole C0008A) succession of hemipelagic silty clay with thin sand beds and volcanic ash layers. In addition to the discrete ash layers, volcanic glass and pumice are disseminated as a significant component within the sediments. At the base of Unit I, a 40 m section of clayey gravel containing rounded clasts of clay and pumice constitutes Subunit IB. This subunit is interpreted as a series of mass-wasting deposits accumulated in the lower slope basin, possibly during an early stage of basin formation. The Pleistocene/Pliocene boundary is found within Subunit IB. Unit II includes ~57 m of sand-rich sediment for which there was very limited recovery. This sand, along with a minor gravel component, contains a diverse detrital grain assemblage that includes clasts of sedimentary, metasedimentary, plutonic, and volcanic rocks.

Structural observations of the two holes drilled at Site C0008 indicate that sediments are nondeformed to weakly deformed. The main structural features consist of subhorizontal bedding and normal faults (Fig. F8). Deformation bands and sediment-filled veins were not observed. Normal faults do not show any preferred orientation, suggesting that they reflect vertical compaction. A high concentration of normal faults is found in Hole C0008C between 35 and 80 m CSF, and a 5 cm thick gently dipping shear zone was observed by computed tomography (CT) scan image analysis at ~41 m CSF. These features could correspond to the discontinuity in bedding dip that is apparent in seismic reflection profiles.

Two microfossil groups, calcareous nannofossils and radiolarians, from core catcher samples were analyzed for biostratigraphy at Site C0008. Moderately preserved and abundant calcareous nannofossils and radiolarians were seen in samples from the upper part of the sequences in Holes C0008A and C0008C, whereas they are relatively poorly preserved in the lower part of the sequences in the both holes. For sediments recovered in Hole C0008A, calcareous nannofossil zones from Pleistocene Zone NN21 to Pliocene Zone NN16 were recognized, and Pleistocene radiolarian *Botryocyrites aquilonaris* and *Encyrtidium matuyamai* zones were determined. Between 11.92 and 21.31 m CSF, a transition from Zones NN21 to NN19 is observed, suggesting low sedimentation rates or an age gap. Both calcareous nannofossils and radiolarians suggest an age reversal at ~90 m CSF; postcruise work will evaluate whether this reversal is an artifact of reworking. No reliable ages were obtained below 282.35 m CSF. A sample at

329.36 m CSF indicates a Miocene Zone NN11 age; however, because this was an isolated clast, it is not clear if this is representative of the formation.

Paleomagnetic studies in Hole C0008A indicate that NRM averages 10 mA/m within the depth range of 0–45 mbsf, 39 mA/m between 40 and 150 mbsf, and 207 mA/m between 160 and 270 mbsf. Magnetic susceptibility and NRM intensity variations through sedimentary units are closely correlated. Two sharp increases in magnetic susceptibility are present at ~45 and 165 m CSF, respectively. Interestingly, the stable inclinations also switch polarity from normal to reversed at ~165 m CSF, suggesting that characteristic susceptibility and NRM intensity response might be useful for identifying geomagnetic event boundaries. Variations in magnetic susceptibility are probably caused by variations in the magnetic mineral type or in the content of magnetic minerals in the observed volcanic ashes and silty clay with depth. Parts of the magnetic polarity interval were able to be correlated with biostratigraphic data to refine the age history at the site.

In Hole C0008A, porosity from discrete samples decreases with depth from ~65% at the surface to 50% at 270 m CSF (Fig. F8). This is mirrored by an increasing trend of bulk density values. Bulk density increases with depth from ~1.60 g/cm<sup>3</sup> at the surface to ~1.87 g/cm<sup>3</sup> at 270 m CSF. Grain density is almost constant at ~2.69 g/cm<sup>3</sup>. Thermal conductivity values increase slightly with depth but are scattered because of gas expansion cracks in much of the core. Heat flow at Site C0008 is low compared to near-surface data but agrees well with heat flow at Site C0004. Heat flow estimates in Holes C0008A and C0008C yield similar results. Thermal conductivity values associated with Holes C0008A and C0008C vary between 0.7 and 1.2 W/(m·K) and show a great deal of scatter, possibly because of gas expansion cracks. Downhole temperature was measured using the APCT3 in Holes C0008A and C0008C and supplemented by the sediment temperature tool in Hole C0008A. The best fitting thermal gradients are 51°C/km and 57°C/km in Holes C0008A and C0008C, respectively.

One of the main features in the pore water chemical profiles at Site C0008 is the evidence for gas hydrate occurrence. In Hole C0008A, gas hydrate is evidenced by two sharp and local Cl minima detected at ~120 and 136 m CSF, in which Cl values were ~2%–3% less than modern seawater. These local minima coincide with concentration minima in Na, Sr, PO<sub>4</sub>, and salinity, and the minimum at 136 m CSF is very near a maximum in methane concentrations (at ~140 m CSF). After thermal infrared camera scanning in the cutting area showed negative temperature anomalies, we were able to sample gas hydrate-bearing horizons in Hole C0008C. Hole C0008C shows seven pro-

nounced negative concentration excursions between ~70 and 170 m CSF. The lowest Cl concentration was observed at 149.8 m CSF and was half modern seawater values. These Cl anomalies are accompanied by minima in the concentration-depth profiles of other chemical species. These coincident anomalies indicate horizons of high gas hydrate concentration in Hole C0008C, which were predominantly associated with ash or coarse sand layers.

Inorganic geochemical data suggest that the SMT is reached at 6–10 m CSF in Hole C0008A and between 4 and 6 m CSF in Hole C0008C. The SMT depth at this site is much shallower than the other sites drilled during Expedition 316. The concentration of methane increases sharply from the SMT zone and reaches 8.5 mM at ~15.3 m CSF in Hole C0008A. Below this depth, methane decreases to ~2 mM at 60 m CSF and remains at this concentration to the base of the sediment column in Hole C0008A, except for a localized enrichment at ~140 m CSF. At this depth, the concentration of methane reaches 15 mM, indicating the presence of gas hydrates. The C<sub>1</sub>/C<sub>2</sub> ratio increases in the uppermost 15 m and then decreases to 372 at ~160 m CSF, but no further light hydrocarbons were detected.

The calcium carbon content is relatively high in the upper 50 m with concentrations as high as 22.3 wt% and decreases in the lower portion of the site. Total carbon and TN concentrations remain low throughout the site and show a strong positive correlation. The C/N ratio remains generally low, indicating marine origin of the organic matter. The TS content is rather high in the upper 50 m and in the lower ~60 m of the sediment column in Hole C0008A, correlating with the occurrence of iron sulfides.

Microorganisms inhabiting marine subsurface sediments play significant roles for biogeochemical cycling of one-carbon compounds, such as methane production and consumption. At Site C0008, more than 10<sup>8</sup> cells/cm<sup>3</sup> were observed throughout the sediment cores from Holes C0008A and C0008C. The microbial communities were mainly composed of very small coccoids and short rods. The cell abundances in Hole C0008C were slightly higher than those in Hole C0008A, suggesting that the flux of nutrient and energy substrates, as well as the occurrence of methane hydrates, controls the population size and activities of seafloor microbial life.



## Discussion

As a result of the expedition, several unsolved questions were clarified although results and synthesis are still in a preliminary stage. We briefly discuss these preliminary results in this section.

### Activity of the megasplay fault

Seismic and tsunami inversion studies combined with seismic reflection research strongly suggested that the splay fault drilled at Site C0004 slipped during the 1944 Tonankai M 8.2 earthquake (Park et al., 2002) and generated a tsunami. Moore et al. (2007) also suggested recent historical and geological accumulation of displacement along the fault on the basis of 3-D seismic reflection investigation. Although various lines of evidence suggest relatively recent activity along the splay fault, there is one conflicting feature on the seismic profile. The splay fault clearly thrusts hanging wall prism over younger slope sediments in the footwall; however, the youngest slope sediments that cover the fault appear not to be cut by the fault. In addition, the lack of a slope break on the seafloor above the fault could also suggest that this splay fault is presently not active but ceased activity in the recent past. However, shipboard results provide support for an alternate interpretation: the splay fault is active as a kind of blind thrust in which the tip of the fault has not propagated to the surface but remains buried. Slip on deeper levels of the fault zone are expressed by some combination of folding and layer-parallel slip in the shallow slope sediments draping the uppermost portion of the megasplay, as well as the possible triggering of marine slump or slide deposits.

Drilling results at Site C0004 indicate that the shallowest cover sediments above the hanging wall wedge are composed of repeated mass flow deposits associated with repeated slope collapses and rip-up debris generation. Pleistocene cover sediments dip steeply approximately parallel to the slope and are cut by numerous normal faults. Normal faults are also developed within the slope basin sediments in Holes C0008A and C0008C. These lines of evidence document that the slope is quite unstable and easily collapses when triggered, possibly by earthquakes. The age reversal from Pliocene to Pleistocene documented beneath the splay fault is also consistent with geologically recent activity.

Despite inferences of recent activity on the splay fault system, no porosity inversion is observed beneath the splay fault; this contrasts with previous results from the déc-

ollement of the Muroto transect (Screaton et al., 2002), in which a clear porosity inversion across the fault likely reflects fluid overpressure. Unlike the Muroto transect décollement, the splay fault system observed at Sites C0004 and C0008 has permeable pathways for dewatering provided by the observed sand and coarse ash layers.

Sediments of the slope basin at Site C0008 provide a “reference site” for the sediments underthrust beneath the megasplay fault. Comparison of the interval 190–200 m CSF in Hole C0008A with an average porosity of 50% and the correlated interval 320–330 m CSF in Hole C0004D with an average porosity of 43% suggests the sediments are dewatering during underthrusting. Evidence for lateral flow is provided by  $C_1/C_2$  ratios at Site C0008 that are slightly lower than expected for biogenic production at the estimated in situ temperature. Lateral flow along sand layers could transmit fluids from where the temperature is higher because of greater burial underneath the splay fault.

These sand layers are truncated at a normal fault drilled in Hole C0008C, where surficial material has slid downward. Hole C0008C structural descriptions document normal faults within the sediments at ~40 m CSF. Lateral transmission of fluids from areas with thicker to thinner overburden has previously been suggested as a mechanism for enhancing slope failure (Dugan and Flemings, 2000). As a result, splay fault movement could produce slope failures through seaward propagation of pore pressures from the footwall in addition to oversteepening of the hanging wall. Postcruise examination of lithologic evidence, hydrogeologic properties, and geotechnical properties will help assess the interaction between splay fault movement and slope failures.

Permeable pathways for consolidation and dewatering of the underthrust sediments could have implications for splay fault evolution. As these sediments dewater, drainage will affect the profile of effective stress in the section, resulting in a migrating zone of minimum mechanical strength. As this progresses through time, it is possible that the splay fault will migrate to less consolidated sediments (Moore and Byrne, 1987; Saffer, 2003).

Two steps of age reversal are tentatively recognized across the splay fault zone; this evidence suggests that fault-bounded Unit III at Site C0004 is a sliverlike unit coming up from a much deeper setting. The lithology of the slope sediments and the old accretionary prism in Hole C0008A suggests that one of the possible sources for Unit III “sliver” at Site C0004 is the lowermost slope sediments beneath the Pleistocene and

late Pliocene slope sediments. In this case, displacement along the splay fault, especially the lower boundary fault beneath Unit III, might be more than a couple of kilometers, which would require hundreds of large earthquakes, assuming meter-scale coseismic slip in this location (Tanioka and Satake, 2001; Kikuchi et al., 2003). Interestingly, porosities within this lithologic unit are slightly higher than expected relative to trends observed in overlying material. If these materials have been brought up from depth, they either never had an opportunity to consolidate or have subsequently had considerable opening of porosity by microfractures in this fault sliver.

Detailed analysis of the fault zone, including properties of the hanging wall, fault sliver, and footwall, is a main target of postcruise science to clarify the fault mechanism in the shallow splay fault.

## **Accretionary prism and plate boundary frontal thrust**

The accretionary prism and frontal thrust cored during Expedition 316 (Sites C0006 and C0007) present unique features that are not observed in the Muroto and Ashizuri transects in the Nankai Trough or at other accretive margins such as Barbados, Aleutian, or Cascadia margins.

The features are

1. Systematic in-sequence thrust propagating mode within the accretionary prism, which is well observed in the Muroto transect and the Barbados Ridge, is not observed; rather, the frontal thrust appears to have functioned as a plate boundary thrust for a long period, similar to the architecture observed along erosive margins.
2. Taper angle at the toe is the largest in the Nankai Trough (Kimura et al., 2007a) and similar to those in erosive margins (Clift and Vannucchi, 2004).
3. Seismic reflection profiles suggest that a new incipient décollement appears to be formed within a layer beneath the trench wedge sediments (G. Moore, pers. comm., 2007)
4. Sandy and channel-filling coarse sediments are interpreted based on geophysical evidence to constitute most of the accretionary prism, and the same sediments fill the present trench wedge in the Nankai Trough.

How these characteristic features of accretionary prism in this region are intimately related to each other is unclear.

As a result of drilling at two sites (Holes C0006E, C0006F, C0007A–C0007C, and C0007D), several new aspects of the accretion/subduction system have been revealed. The upper accretionary prism is composed of coarse terrigenous sediments, including gravel-dominated and lower mud-dominated lithologies in the upper and lower parts of the accretionary wedge, respectively. They may be trench wedge to slope sediments and hemipelagic Shikoku Basin sediments, respectively; however, that interpretation must be confirmed by more detailed onshore analysis and results of planned drilling of sediments on the incoming plate. The modern trench wedge is composed of channel-filling deposits that are currently underthrusting beneath the accretionary prism. The plate boundary frontal thrust is located at a stratigraphic horizon of late Miocene mud, which appears to be similar to the Shikoku Basin facies that hosts the décollement in the Muroto and Ashizuri transects (Moore, Taira, Klaus, et al., 2001).

The sediments of lithologic Unit I at Site C0006 are interpreted to represent a transition from trench to slope deposition; thus, the boundary between Units I and II records the uplift of trench material into the prism, and its age potentially provides a constraint on the timing of frontal thrust activity (Fig. F4). Sediments of Unit I are younger or the same age as sediments filling the basin behind the thrust. The age of the boundary is ~0.9 Ma. Taking into account the relative plate motion velocity between the overriding Japanese islands and the Philippine Sea plate, ~4 cm/y (Seno et al., 1993), the relative slip distance has to be ~40 km. No frontal accretion during this period means that the plate boundary frontal thrust has large displacement (total relative motion minus horizontal shortening of the accretionary prism). How such a large amount of slip has concentrated within the fault zone and how the evolution of the fault zone has affected the characteristic features in this region is one of the important issues of postcruise research.

The accretionary prism in the frontal thrust region is deformed by thrusting, as visible on the seismic profiles (Moore et al., 2007) and LWD data (Kinoshita et al., 2008). Most of the thrusts inferred from the seismic profile and LWD were confirmed from age reversals, fault zones sampled in cores, and repetition of specific strata, but some additional faults were also defined during Expedition 316 drilling. Chemical analysis of interstitial fluid and microbial habitat around most of these “intraprism” thrusts do not indicate any signal of active fluid flow.

In contrast to such intraprism thrusts, many normal faults are developed at the core scale and appear to be the youngest deformation feature. Clear slope-parallel mass sliding is observed from the submarine topography, seismic profiles, and shallow

cores. These facts suggest that the taper angle of the prism is presently above the critical wedge taper angle and is unstable; there is evidence that the system is currently in a period of collapse. These preliminary interpretations of the frontal part of the accretionary prism have to be investigated from the physical and hydrological properties of accretionary prism material in postcruise research. Extremely low heat flow observed at Sites C0006 and C0007 might be related to stratigraphic or structural fluid pathways developed in this region. Porosity data suggest that a considerable thickness of material has been removed from the surface at Sites C0006 and C0007. Porosities are quite low at shallow depths below the surface, reaching 48% at 5 and 34 m CSF at Sites C0006 and C0007, respectively. In contrast, porosities do not decrease to <50% until ~150 or ~200 m CSF, respectively, at prism Site C0004 and slope basin Site C0008.

Frontal thrust fault rocks were successfully recovered and preliminary visual core description shows shear localization and repeated slip in the fault zone; relationships between apparent repeated localized slip and coseismic and/or interseismic slip are a primary component of postcruise science research. Shipboard geochemical analyses suggest possible fluid flow around the frontal thrust. Episodicity of fluid flow and relationships between pore pressure and slip along the thrust are keys to understanding the dynamics of this part of accretionary prism and plate boundary thrust.

## **Preliminary scientific assessment**

Expedition 316 successfully achieved the drilling objectives at the shallow megasplay fault and the frontal thrust. Site C0004, located seaward of the originally proposed site, was successfully cored during Expedition 316. Recovery conditions were difficult because the consolidation state and fractured nature of the prism was not ideal for either extended shoe coring system (ESCS) or rotary core barrel (RCB) coring. Recovery through the fault zone was increased by taking 4.5 m (rather than the typical 9.5 m) cores. This method allowed successful recovery of fault zone samples, enabling description of the deformation surrounding the splay fault. In addition, samples were collected for multidisciplinary postcruise analysis. Whole-round cores were taken for postcruise geotechnical and hydrogeological studies; where these samples were unavailable because of brecciation, split core samples were collected. Testing of samples from beneath the splay fault will evaluate the consolidation state, mechanical properties, and hydrologic properties of the underthrust material. Results from Site C0004 underthrust sediments will be compared to data from correlated material at Site

C0008. In addition, Expedition 316 results from Site C0004 will be integrated with LWD data (Expedition 314), and results from Kumano Basin drilling (Expedition 315) will also provide critical information on the timing of splay fault initiation.

The primary unachieved goal at the megasplay region was installment of casing for a future observatory. The casing was originally planned for Site C0003; during Expedition 314, the splay fault could not be reached at this site because of drilling conditions. Instead, Site C0004, which penetrated the splay fault at an estimated depth of ~290 m CSF, was selected as a replacement. The casing plan was not transferred to Site C0004 because of uncertainty as to whether its shallower depth would meet the observatory objectives. In addition, it was felt that if time allowed after completion of Sites C0004 and C0006, it would be scientifically more valuable to attempt a second, deeper crossing of the megasplay fault at ~480 m CSF (which later turned out to be impossible because of time constraints) rather than to begin casing operations.

Drilling of the frontal thrust area provided the material to meet the Expedition 316 objectives in this area. Although Site C0006 did not reach the frontal thrust, it successfully captured several fault zones and characterized the lithologies, ages, deformation, pore fluid geochemistry, and physical properties of the hanging wall. Site C0007 provided a clear view of the high-energy nature of the axial channel environment through recovery of very coarse grained deposits, including gravel. These coarse-grained sediments provide clues to the nature of material accreted into the prism. After moving to Hole C0007C, ~185 m from Hole C0007A, to avoid a fault-thickened section of gravels, the frontal thrust was crossed. Through age reversals and structural observations, it is clear that a significant fault within the frontal thrust was recovered at Site C0007 and that the recovered material documents shear localization.

X-ray CT scan imaging proved to be extremely scientifically valuable during the cruise. It was used to ensure that critical intervals were not removed for whole-round samples for interstitial water or microbiological analyses. It was also crucial for identifying and measuring deformation structures that would otherwise have been masked by the splitting process and for discerning natural from drilling-induced brecciation. Postcruise analyses of the X-ray CT images will assist in structural analyses and evaluation of slump or slope failure deposits, potentially related to the seismogenic zone.

## Operations

Expedition 316 began at 0000 h on 20 December 2007 following the arrival by helicopter of the science party and initial science and prespud meetings. See Table **T1** for a breakdown of general coring and Table **T2** for downhole measurement operations.

### Site C0004

#### *Positioning on Site C0004*

The *Chikyu* was on site on 19 December 2007. The final site drilled during Expedition 315 was <5 nmi from Site C0004, requiring minimal transit time prior to the start of operations for Expedition 316. Additionally, since the site was occupied during Expedition 314 for both pilot hole (Hole C0004A) and LWD (Hole C0004B) operations, the acoustic beacons required for dynamic positioning (DP) operations were already in place. The full science party arrived on the *Chikyu* on the afternoon of 19 December, and Hole C0004C was tagged at 0535 h on 20 December at 2632 m drillers depth below rig floor (DRF) (2603.5 m mud depth below sea level [MSL]).

#### *Hole C0004C*

Coring with hydraulic piston coring system (HPCS) commenced at that time and continued to 89.22 m CSF. Three APCT3 measurements were taken at the same time as collection of Cores 316-C0004C-3H, 6H, and 9H. ESCS coring commenced at 2213 h on 20 December in Hole C0004C and continued to 127.22 m CSF. Because of poor ESCS core quality, HPCS coring was resumed at 0447 h on 21 December, and three cores (Cores 316-C0004C-16H through 18H) were collected. The last HPCS core (Core 316-C0004C-18H, 133.18–135 m CSF) also included an APCT3 run. At 0732 h on 21 December, because of failure to achieve full penetration using the HPCS, the bottom-hole assembly (BHA) and drill pipe was run out of the hole, and the hole was killed with high-density mud.

#### *Hole C0004D*

Repositioning to Hole C0004D began at 1300 h on 21 December 2007, in parallel with making up the RCB assembly and running pipe to the seafloor.

Hole C0004D was tagged at 0030 h on 22 December at 2659 m DRF (2630.5 m MSL) and washing down to 100 mbsf commenced. RCB coring commenced at 1225 h on 22 December. During RCB coring, several instances of plugged bit throat and plugged

bit nozzles were inferred from coring results and pressure readings, and bit deplugging was conducted to clear the problem. Variations in revolutions per minute (rpm) and drilling fluid pressure/flow rate were used to attempt to improve recovery, and cleaning the bit by increasing flow after each core was implemented. Additionally, because of recovery problems, short cores (4.5 m) were taken on every coring run below 238 mbsf CSF (Core 316-C0004D-21R).

Coring was delayed several times because of weather conditions for a total of ~6 h of standby. An additional 3 h of downtime was caused by a fault in the integrated automation system that provides power to one of the DP modules.

TD of 400 m CSF was reached at 2334 h on 25 December 2007 and pulling out of the hole and killing the hole with high-density mud was carried out. Tripping the drill string and breaking down the bit assembly commenced.

Seafloor acoustic navigation beacons were recovered, the vessel was repositioned to Site C0006, and preparations for testing of the underwater television camera (for drilling at depths >3000 m MSL) commenced.

## **Site C0006**

### ***Positioning on Site C0006***

The *Chikyu* arrived on site on 27 December 2007 and began testing the underwater television system. Electronics problems forced the cancellation of that test, and positioning over Hole C0006C began at 1200 h on 28 December. The HPCS BHA was rigged up and run to the seafloor, and Hole C0006C was tagged at 1915 h on 28 December.

### ***Hole C0006C***

Because of the lack of a camera system or ROV observation, collection of a mudline core had to be accomplished by trial and error. One HPCS core (316-C0006C-1H) was taken at 1915 h on 28 December (33°1.6458'N, 136°47.6282'E, seafloor: 3880.5 m MSL), resulting in full recovery, requiring repositioning and reshooting in order to collect the mudline.



### **Hole C0006D**

One HPCS core (316-C0006D-1H) was taken in Hole C0006D (33°1.6431'N, 136°47.6282'E, seafloor: 3877.5 m MSL) at 2245 h on 28 December, resulting in full recovery with no mudline. The vessel was again repositioned.

### **Hole C0006E**

Core 316-C0006E-1H was collected at 0000 h on 29 December, resulting in 5.19 m of recovery, including the mudline in Hole C0006E (33°1.6444'N, 136°47.6282'E, seafloor: 3875.81 m MSL). HPCS coring continued from 5.19 m CSF. Fourteen HPCS cores were collected with total recovery of 79.33 m and average recovery of 96.47%. APCT3 measurements were taken every two cores starting at the third core (Cores 316-C0006E-3H, 5H, 8H, 10H, 12H, and 14H). Refusal (no penetration) occurred at Core 316-C0006E-14H and HPCS coring was halted.

ESCS coring commenced at that time, resulting in the recovery of 35 cores (Cores 316-C0006E-15X through 49X), with total recovery of 330.11 m at a rate of 74.61%. Six DVTP measurements were made following Cores 316-C0006E-23X, 26X, 28X, 29X, 35X, and 42X. Three of the DVTP runs were unsuccessful because of battery failure, thermistor failure, and failure to penetrate formation following Cores 316-C0006E-23X, 28X, and 42X, respectively.

After observing a drastically reduced rate of penetration during the cutting of Core 316-C0006E-49X, we determined that refusal had been reached, and Hole C0006E was completed at 409.4 m CSF at 1930 h on 6 January 2008. Hole C0006E was killed with high-density mud, the BHA was pulled out of the hole, the drill pipe was tripped, and the HPCS/ESCS BHA was racked back. During this time, there was an electrical problem with the wireline winch motor, requiring that Core 316-C0006E-49X be recovered after recovering the BHA on the rig floor. This occurred at 0330 h on 7 January.

### **Hole C0006F**

The *Chikyu* then relocated to Hole C0006F and the RCB BHA was run to the seafloor. Hole C0006F was tagged at 1730 h on 7 January 2008 (33°1.6242'N, 136°47.6282'E, water depth: 3875.5 m MSL). We conducted jet-in to 50 mbsf and washed down to 395 mbsf. RCB coring operations began, and 23 RCB cores were recovered (Cores 316-C0006F-1R through 23R) from 395 to 603 m CSF with total recovery of 56.48 m at a rate of 28.26%.

Following the collection of Core 316-C0006F-23R, it was determined based on pump rates, pressure, torque, and rpm that the hole condition had deteriorated to such a degree as to make further coring too risky. As pumping rate increased, the torque increased to the point of stalling the top drive (0 rpm); as pump rates were dropped, torque simultaneously dropped and rpm increased. The only way to get the bit back to the bottom of the hole was to run in the hole with <10 spm, which was considered unacceptably risky for either drilling or coring. The decision was made at ~0900 h on 13 January to abandon Site C0006 and relocate to proposed Site NT1-03A as an alternative means to achieve the science goals for the NT1-03 family of sites. Hole C0006F was killed with high-density mud, the BHA was pulled out of the hole, the drill pipe was tripped, and the RCB BHA was racked back at 2100 h on 13 January 2008.

## **Site C0007**

### ***Positioning on Site C0007***

The *Chikyu* relocated to Site C0007 (proposed site NT1-03A) on 13 January 2008. The ROV was launched in order to deploy seafloor transponders below the Kuroshio Current (running at 2.0–2.5 kt at the time). The ROV was recovered, and the HPCS/ESCS BHA was rigged up and readied while the vessel was calibrating for DP navigation and positioning over the site. The BHA was run to the seafloor, and Hole C0007A was tagged at 2230 h on 14 January (33°01.23258'N, 136°47.94852'E, depth: 4081 m MSL).

### ***Holes C0007A, C0007B, and C0007C***

The first core (316-C0007A-1H) was a successful mudline core that penetrated to 3.14 m CSF with 100% recovery. Because of operational and curatorial issues, the following core was labeled 316-C0007B-1H. This core was taken from 3.14 m CSF and it recovered 10.06 m of sediment with recovery of 105.9%. Because the bit came out of the borehole during recovery of this core and no set standard for hole naming dealt with this issue, the following core was labeled 316-C0007C-1H. This core was taken from 12.64 m CSF and recovered 7.95 m of sediment with 100% recovery. All further coring was conducted continuously in Hole C0007C from this point. Cores 316-C0007C-2H to 4H, 5X to 15X, and 16H to 17H were collected with total recovery of 51.26 m at a recovery rate of 33.82% in interlayered silt, sand, and coarse pebbles. Jamming of the piston core barrel in the BHA following the shooting of Core 316-C0007C-18H at ~1500 h on 17 January required several hours of operational down time and resulted

in the abandonment of Hole C0007C. The inner core barrel was lost during the attempts to recover Core 316-C0007C-18H.

Pulling out of the hole and recovery of BHA took place between 1200 and 2400 h on 18 January 2008. During this operation, request for permission to drill an alternate hole 185 m northwest of Hole C0007C was made, and permission was granted via Center for Deep Earth Exploration (CDEX) and Environmental Protection and Safety Panel (EPSP). Because of consideration of both science target and time requirements, the decision was made to run the RCB coring system.

### ***Hole C0007D***

After permission to core in Hole C0007D was granted, the vessel was repositioned 185 m northwest of Hole C0007C. The RCB BHA was made up and run in the hole, and Hole C0007D was spudded on 19 January 2008 at 0330 h (33°1.3167'N, 136°47.8872'E, water depth: 4049 m MSL). Jet-in and wash down to 18 mbsf and drilling to 175 m CSF were conducted down to the first coring point, which was reached at 1330 h on 19 January. Coring operations in Hole C0007D resulted in the collection of Cores 316-C0007D-1R through 35R (175–493.5 m CSF) with total recovery of 87.9 m at a rate of 27.61%. A combination of

1. Determination that the primary scientific target had been reached,
2. Deteriorating hole conditions,
3. Repeated zero-recovery cores, and
4. Recovery of small amounts of loose fine sand in the final core (316-C0007D-35R)

resulted in the determination (made at 1500 h on 24 January) to pull out of the hole, kill the hole with dense mud, and recover the BHA to the surface. The BHA was recovered at 0130 h on 25 January. All sea bottom acoustic navigation beacons were recovered from Sites C0006 and C0007, and the vessel moved to contingency Site NT2-10 (Site C0008) on 26 January 2008.

## **Site C0008**

### ***Positioning on Site C0008***

The *Chikyu* relocated to Site C0008 (proposed Site NT2-10A) on 26 January 2008. The ROV was launched in order to deploy seafloor transponders below the Kuroshio Current (running at 2.0–2.5 kt at the time), and the HPCS/ESCS BHA was rigged up and readied while the vessel was calibrating for DP navigation and positioning over the

site. The BHA was run to the seafloor, the ROV was used to check position, and Hole C0008A was tagged at 0130 h on 27 January (33°12.8229'N, 136°43.5997'E, depth: 2751 m MSL). The ROV was then recovered.

### ***Hole C0008A***

The first core (316-C0008A-1H) was a successful mudline core that penetrated to 6.93 m CSF with 100% recovery. Cores 316-C0008A-2H to 28H, 29X to 42X, and 43H were collected with a total recovery of 271.2 m at a rate of 75.8% in interlayered mud, silt, and sand. Near the bottom of the hole, starting from Core 316-C0008A-34X, the drilling rate of penetration dramatically increased and recovery dropped to near 0%. After several repeated attempts to improve recovery by changing drilling and pumping parameters and a final attempt to successfully HPCS core the inferred unconsolidated sand at the bottom of Hole C0008A, the hole was abandoned. During this time, a request was made to CDEX and EPSP to shift 215 m southeast and core Hole C0008B. This request was approved.

Pulling out of the hole and the killing of Hole C0008A took place between 0900 and 1815 h on 31 January 2008. The BHA was pulled out of the hole to 200 m above the seafloor and the rig was shifted to Hole C0008B between 1815 and 1930 h on 31 January 2008.

### ***Holes C0008B and C0008C***

The vessel was positioned above Hole C0008B (Hole C0008C is at the same location) at 2130 h on 31 January 2008 (33°12.7313'N, 136°43.6727'E, water depth: 2797 m MSL). The BHA was run in the hole to the seafloor, and the seafloor was tagged at 2828 m DRF. The first HPCS core (316-C0008B-1H) was shot at 2135 h but did not successfully capture the mudline. Hole C0008B was abandoned and Core 316-C0008C-1H (5.51 m of recovery, successful mudline) was shot in Hole C0008C at 0005 h on 1 February 2008. Coring operations in Hole C0008C resulted in the collection of Cores 316-C0008C-1H to 21H, 22X, and 23X\* to 25X\* (the \* for Cores 316-C0008C-23X\* to 25X\* denote the test of the newly designed “punch” system, which is a modification of the ESCS system) (0–176.2 m CSF) with total recovery of 189.7 m of core at a rate of 108%.

During this operation, observations from previous Hole C0008A were used to adjust the determination of the advance of the piston core based on the drillers information and the observation of large amounts of exotic material sucked into the bottoms of HPCS cores deeper in the section (Cores 316-C0008C-7H to 21H). This phenomenon

resulted in initial recovery rates that in some cases exceeded 200% (i.e., with an advance of 5 m and recovery of 10.2 m). However, X-ray CT imagery and visual core description have confirmed that the drillers' advance data are generally reliable as a measure of actual HPCS penetration. The intervals of each core occupied by exotic material pulled into the core bottom have been recorded, and use of the J-CORES depth processing and "D-Tunes" functionality will allow postprocessing of the coring recovery and data registration with little difficulty.

After HPCS refusal was determined based on low penetration, severe core liner deformation, and severe core expansion problems in Cores 316-C0008C-17H to 21H, ESCS coring was employed. However, the first ESCS core (316-C0008C-22X) was not of sufficient quality to justify further coring (preservation of the unconsolidated portions of the lithologic section and gas hydrates were particularly poor). The scientific goals of this site were deemed to have been accomplished, TD was declared, and the newly developed ESCS punch coring system was deployed for testing. Three cores (316-C0008C-23X\* to 25X\*) were collected with this system with excellent results. A postexpedition report of the results of this coring system test, including X-ray CT scan, visual core description, and chemistry data (for contamination analysis) will be produced to supplement this report.

Following collection of the final ESCS punch core at 2035 h on 2 February 2008, Hole C0008C was abandoned, the hole killed with dense mud, and the BHA pulled out of the hole to the surface. The BHA was recovered at 0530 h on 3 February 2008. The BHA was rigged down, excess drill pipe laid out, and the guidehorn rigged down. Transponders were recovered on the morning of 4 February and the *Chikyu* began transit to Shingu, Wakayama Prefecture, Japan. Expedition 316 ended with first line ashore at 0930 h on 5 February 2008.

## References

- Ando, M., 1975. Source mechanisms and tectonic significance of historical earthquakes along the Nankai Trough, Japan. *Tectonophysics*, 27(2):119–140. doi:10.1016/0040-1951(75)90102-X
- Ashi, J., Kuramoto, S., Morita, S., Tsunogai, U., Goto, S., Kojima, S., Okamoto, T., Ishimura, T., Ijiri, A., Toki, T., Kudo, S., Asai, S., and Utsumi, M., 2002. Structure and cold seep of the Nankai accretionary prism off Kumano—outline of the off Kumano survey during YK01-04 Leg 2 cruise. *JAMSTEC J. Deep Sea Res.*, 20:1–8.
- Ashi, J., Lallemand, S., Masago, H., and the Expedition 315 Scientists, 2008. NanTroSEIZE Stage 1A: NanTroSEIZE megasplay riser plot. *IODP Prel. Rept.*, 315. doi:10.2204/iodp.pr.315.2008
- Baba, T., and Cummins, P.R., 2005. Contiguous rupture areas of two Nankai Trough earthquakes revealed by high-resolution tsunami waveform inversion. *Geophys. Res. Lett.*, 32(8):L08305. doi:10.1029/2004GL022320
- Baba, T., Cummins, P.R., Hori, T., and Kaneda, Y., 2006. High precision slip distribution of the 1944 Tonankai earthquake inferred from tsunami waveforms: possible slip on a splay fault. *Tectonophysics*, 426(1–2):119–134. doi:10.1016/j.tecto.2006.02.015
- Byrne, D.E., Davis, D.M., and Sykes, L.R., 1988. Loci and maximum size of thrust earthquakes and the mechanics of the shallow region of subduction zones. *Tectonics*, 7(4):833–857. doi:10.1029/TC007i004p00833
- Clift, P., and Vannucchi, P., 2004. Controls on tectonic accretion versus erosion in subduction zones: implications for the origin and recycling of the continental crust. *Rev. Geophys.*, 42(2):RG2001. doi:10.1029/2003RG000127
- Dugan, B., and Flemings, P.B., 2000. Overpressure and fluid flow in the New Jersey continental slope: implications for slope failure and cold seeps. *Science*, 289(5477):288–291. doi:10.1126/science.289.5477.288
- Hickman, S., Zoback, M., and Ellsworth, W., 2004. Introduction to special section: preparing for the San Andreas Fault Observatory at depth. *Geophys. Res. Lett.*, 31(12):L12S01. doi:10.1029/2004GL020688
- Hori, T., Kato, N., Hirahara, K., Baba, T., and Kaneda, Y., 2004. A numerical simulation of earthquake cycles along the Nankai Trough in southwest Japan: lateral variation in frictional property due to the slab geometry controls the nucleation position. *Earth Planet. Sci. Lett.*, 228(3–4):215–226. doi:10.1016/j.epsl.2004.09.033
- Ichinose, G.A., Thio, H.K., Somerville, P.G., Sato, T., and Ishii, T., 2003. Rupture process of the 1944 Tonankai earthquake ( $M_s$  8.1) from the inversion of teleseismic and regional seismograms. *J. Geophys. Res.*, 108(B10):2497. doi:10.1029/2003JB002393
- Ito, Y., and Obara, K., 2006. Very low frequency earthquakes within accretionary prisms are very low stress-drop earthquakes. *Geophys. Res. Lett.*, 33(9):L09302. doi:10.1029/2006GL025883
- Kame, N., Rice, J.R., and Dmowska, R., 2003. Effects of prestress state and rupture velocity on dynamic fault branching. *J. Geophys. Res.*, 108(B5):2265. doi:10.1029/2002JB002189
- Kikuchi, M., Nakamura, M., and Yoshikawa, K., 2003. Source rupture processes of the 1944 Tonankai earthquake and the 1945 Mikawa earthquake derived from low-gain seismograms. *Earth, Planets Space*, 55(4):159–172.
- Kimura, G., Kitamura, Y., Hashimoto, Y., Yamaguchi, A., Shibata, T., Ujiie, K., and Okamoto, S., 2007a. Transition of accretionary wedge structures around the up-dip limit of the seis-

- mogenic subduction zone. *Earth Planet. Sci. Lett.*, 225(3–4):471–484. doi:10.1016/j.epsl.2007.01.005
- Kimura, G., Sreaton, E.J., and Curewitz, D., 2007b. NanTroSEIZE Stage 1: NanTroSEIZE shallow megasplay and frontal thrusts addendum. *IODP Sci. Prosp.*, 316 addendum. doi:10.2204/iodp.sp.316add.2007
- Kinoshita, M., Tobin, H., Moe, K.T., and the Expedition 314 Scientists, 2008. NanTroSEIZE Stage 1A: NanTroSEIZE LWD transect. *IODP Prel. Rept.*, 314. doi:10.2204/iodp.pr.314.2008
- Lay, T., Kanamori, H., Ammon, C.J., Nettles, M., Ward, S.N., Aster, R.C., Beck, S.L., Bilek, S.L., Brudzinski, M.R., Butler, R., DeShon, H.R., Ekström, G., Satake, K., and Sipkin, S., 2005. The great Sumatra-Andaman earthquake of 26 December 2004. *Science*, 308(5725):1127–1133. doi:10.1126/science.1112250
- Ma, K., 2005. Slip zone and energetic of a large earthquake from seismological modeling and fault core of TCDP. *Eos, Trans. Am. Geophys. Union*, 86(52):T43D-02. (Abstract)
- Mikada, H., Moore, G.F., Taira, A., Becker, K., Moore, J.C., and Klaus, A. (Eds.), 2005. *Proc. ODP, Sci. Results*, 190/196: College Station, TX (Ocean Drilling Program). doi:10.2973/odp.proc.sr.190196.2005
- Miyazaki, S., and Heki, K., 2001. Crustal velocity field of southwest Japan: subduction and arc-arc collision. *J. Geophys. Res.*, 106(B3):4305–4326. doi:10.1029/2000JB900312
- Moore, G.F., Bangs, N.L., Taira, A., Kuramoto, S., Pangborn, E., and Tobin, H.J., 2007. Three-dimensional splay fault geometry and implications for tsunami generation. *Science*, 318(5853):1128–1131. doi:10.1126/science.1147195
- Moore, G.F., Taira, A., Klaus, A., et al., 2001. *Proc. ODP, Init. Repts.*, 190: College Station, TX (Ocean Drilling Program). doi:10.2973/odp.proc.ir.190.2001
- Moore, J.C., and Byrne, T., 1987. Thickening of fault zones: a mechanism of melange formation in accreting sediments. *Geology*, 15(11):1040–1043. doi:10.1130/0091-7613(1987)15<1040:TOFZAM>2.0.CO;2
- Moore, J.C., and Saffer, D., 2001. Updip limit of the seismogenic zone beneath the accretionary prism of southwest Japan: an effect of diagenetic to low-grade metamorphic processes and increasing effective stress. *Geology*, 29(2):183–186. doi:10.1130/0091-7613(2001)029<0183:ULOTSZ>2.0.CO;2
- Nakanishi, A., Takahashi, N., Park, J.-O., Miura, S., Kodaira, S., Kaneda, Y., Hirata, N., Iwasaki, T., and Nakamura, M., 2002. Crustal structure across the coseismic rupture zone of the 1944 Tonankai earthquake, the central Nankai Trough seismogenic zone. *J. Geophys. Res.*, 107(B1):2007. doi:10.1029/2001JB000424
- Obana, K., Kodaira, S., Mochizuki, K., and Shinohara, M., 2001. Micro-seismicity around the seaward updip limit of the 1946 Nankai earthquake dislocation area. *Geophys. Res. Lett.*, 28(12):2333–2336. doi:10.1029/2000GL012794
- Obara, K., Hirose, H., Yamamizu, F., and Kasahara, K., 2004. Episodic slow slip events accompanied by non-volcanic tremors in southwest Japan subduction zone. *Geophys. Res. Lett.*, 31(23):L23602. doi:10.1029/2004GL020848
- Obara, K., and Ito, Y., 2005. Very low frequency earthquakes excited by the 2004 off the Kii Peninsula earthquakes: a dynamic deformation process in the large accretionary prism. *Earth, Planets Space*, 57(4):321–326.
- Park, J.-O., Tsuru, T., Kodaira, S., Cummins, P.R., and Kaneda, Y., 2002. Splay fault branching along the Nankai subduction zone. *Science*, 297(5584):1157–1160. doi:10.1126/science.1074111

- Plafker, G., 1972. Alaskan earthquake of 1964 and Chilean earthquake of 1960: implications for arc tectonics. *J. Geophys. Res.*, 77(5):901–925. doi:10.1029/JB077i005p00901
- Ruff, L., and Kanamori, H., 1983. Seismic coupling and uncoupling at subduction zones. *Tectonophysics*, 99(2–4):99–117. doi:10.1016/0040-1951(83)90097-5
- Saffer, D.M., 2003. Pore pressure development and progressive dewatering in underthrust sediments at the Costa Rican subduction margin: comparison with northern Barbados and Nankai. *J. Geophys. Res.*, 108(B5):2261–2276. doi:10.1029/2002JB001787
- Saffer, D.M., and Marone, C., 2003. Comparison of smectite- and illite-rich gouge frictional properties: application to the updip limit of the seismogenic zone along subduction megathrusts. *Earth Planet. Sci. Lett.*, 215(1–2):219–235. doi:10.1016/S0012-821X(03)00424-2
- Screaton, E., Saffer, D., Henry, P., and Hunze, S., 2002. Porosity loss within the underthrust sediments of the Nankai accretionary complex: implications for overpressures. *Geology*, 30(1):19–22. doi:10.1130/0091-7613(2002)030<0019:PLWTUS>2.0.CO;2
- Seno, T., Stein, S., and Gripp, A.E., 1993. A model for the motion of the Philippine Sea plate consistent with NUVEL-1 and geological data. *J. Geophys. Res.*, 98(B10):17941–17948. doi:10.1029/93JB00782
- Shipboard Scientific Party, 2001a. Site 1173. In Moore, G.F., Taira, A., Klaus, A., et al., *Proc. ODP, Init. Repts.*, 190: College Station, TX (Ocean Drilling Program), 1–147. doi:10.2973/odp.proc.ir.190.104.2001
- Shipboard Scientific Party, 2001b. Site 1174. In Moore, G., Taira, A., Klaus, A., et al., *Proc. ODP, Init. Repts.*, 190: College Station, TX (Ocean Drilling Program), 1–149. doi:10.2973/odp.proc.ir.190.105.2001
- Tanioka, Y., and Satake, K., 2001. Detailed coseismic slip distribution of the 1944 Tonankai earthquake estimated from tsunami waveforms. *Geophys. Res. Lett.*, 28(6):1075–1078. doi:10.1029/2000GL012284
- Tobin, H.J., and Kinoshita, M., 2006a. Investigations of seismogenesis at the Nankai Trough, Japan. *IODP Sci. Prosp.*, NanTroSEIZE Stage 1. doi:10.2204/iodp.sp.nantroseite1.2006
- Tobin, H.J., and Kinoshita, M., 2006b. NanTroSEIZE: the IODP Nankai Trough Seismogenic Zone Experiment. *Sci. Drill.*, 2:23–27. doi:10.2204/iodp.sd.2.06.2006
- Wang, K., and Hu, Y., 2006. Accretionary prisms in subduction earthquake cycles: the theory of dynamic Coulomb wedge. *J. Geophys. Res.*, 111(B6):B06410. doi:10.1029/2005JB004094
- Yamano, M., Kinoshita, M., Goto, S., and Matsubayashi, O., 2003. Extremely high heat flow anomaly in the middle part of the Nankai Trough. *Phys. Chem. Earth*, 28(9–11):487–497. doi:10.1016/S1474-7065(03)00068-8



Expedition 316 Preliminary Report

**Table T1.** Expedition 316 operations summary.

Hole	Location	Water depth (mbsl)	Cores (N)	Cored (m)	Recovered (m)	Recovery (%)	Drilled (m)	Penetration (m)
C0004C	33°13.2278'N, 136°43.3312'E	2627.0	18	131.3	135.23	102.31	135.0	135.00
C0004D	33°13.2190'N, 136°43.3287'E	2630.5	56	300.0	130.76	43.59	400.0	400.00
Site C0004 totals:			74	431.3	265.99	61.67	535.0	535.00
C0006C	33°01.6458'N, 136°47.6282'E	3880.5	1	9.5	10.26	108.00	9.5	9.50
C0006D	33°01.6431'N, 136°47.6282'E	3877.5	1	9.5	10.20	107.37	9.5	9.50
C0006E	33°01.6444'N, 136°47.6282'E	3875.8	49	409.4	330.32	80.68	409.4	409.44
C0006F	33°01.6242'N, 136°47.6282'E	3875.5	23	208.0	56.48	27.15	208.0	208.00
Site C0006 totals:			74	636.4	407.26	63.99	636.4	636.44
C0007A	33°01.2326'N, 136°47.9485'E	4081.0	1	3.1	3.14	100.00	3.1	3.14
C0007B	33°01.2326'N, 136°47.9485'E	4081.0	1	9.5	10.03	105.58	12.6	12.64
C0007C	33°01.2326'N, 136°47.9485'E	4081.0	18	163.5	59.31	36.29	176.1	176.09
C0007D	33°01.3167'N, 136°47.8872'E	4049.0	35	318.5	87.93	27.61	493.5	493.50
Site C0007 totals:			55	494.6	160.41	32.43	685.4	685.37
C0008A	33°12.8229'N, 136°43.5997'E	2751.0	43	357.8	271.20	75.81	357.8	357.75
C0008B	33°12.7313'N, 136°43.6727'E	2797.0	1	9.5	9.82	103.40	9.5	9.50
C0008C	33°12.7313'N, 136°43.6727'E	2797.0	25	176.2	189.66	108.00	176.2	176.20
Site C0008 totals:			69	543.5	470.68	86.61	543.5	543.45
Expedition 316 totals:			272	2105.8	1304.34	61.94	2400.3	2400.26

Expedition 316 Preliminary Report

**Table T2.** Expedition 316 temperature tool deployments.

Hole, core	Depth (mbsf)	Extrapolated temperature (°C)	Temperature tool	Solution reliability
C0004C-3H	25.38	3.24	APCT3	Good
C0004C-6H	53.88	4.77	APCT3	Good
C0004C-9H	80.84	6.42	APCT3	Good
C0004C-18H	135.00	8.86	APCT3	Good
C0006E-3H	24.19	2.85	APCT3	Good
C0006E-5H	38.52	3.00	APCT3	Good
C0006E-8H	57.69	No usable data	APCT3	Failure
C0006E-10H	64.70	3.75	APCT3	Good
C0006E-14H	79.33	No usable data	APCT3	Failure
C0006E-16X (bottom)	98.33	4.82	DVTP	Fair
C0006E-23X (bottom)	163.33	No data	DVTP	Failure
C0006E-26X (bottom)	191.83	No data	DVTP	Failure
C0006E-28X (bottom)	210.83	No data	DVTP	Failure
C0006E-29X (bottom)	220.33	7.87	DVTP	Fair
C0006E-35X (bottom)	277.33	No usable data	DVTP	Failure
C0006E-42X (bottom)	343.83	No usable data	DVTP	Failure
C0007B-1H	12.64	2.42	APCT3	Good
C0007C-2H	30.09	3.23	APCT3	Good
C0007C-4H	43.09	4.02	APCT3	Good
C0007C-5X (bottom)	52.59	4.14	SET	Good
C0007C-8X (bottom)	81.09	5.43	SET	Good
C0008A-3H	25.00	3.31	APCT3	Poor
C0008A-6H	53.50	4.73	APCT3	Good
C0008A-9H	82.00	No usable data	APCT3	Failure
C0008A-11H	100.00	8.18	APCT3	Poor
C0008A-13H	119.00	8.35	APCT3	Poor
C0008A-16H	130.89	8.46	APCT3	Fair
C0008A-19H	152.70	9.16	APCT3	Good
C0008A-22H	177.73	11.63	APCT3	Good
C0008A-25H	200.89	12.60	APCT3	Good
C0008A-30X (bottom)	243.75	14.60	SET	Fair
C0008C-3H	24.51	3.41	APCT3	Good
C0008C-5H	43.51	4.60	APCT3	Good
C0008C-7H	60.51	5.22	APCT3	Good
C0008C-9H	73.51	6.44	APCT3	Good
C0008C-11H	90.11	7.39	APCT3	Good
C0008C-13H	97.59	7.69	APCT3	Good
C0008C-15H	108.29	7.73	APCT3	Good
C0008C-17H	119.89	8.72	APCT3	Good
C0008C-19H	129.39	9.62	APCT3	Good
C0008C-21H	139.00	10.07	APCT3	Good

Note: APCT3 = advanced piston coring temperature tool, DVTP = Davis-Villinger Temperature Probe, SET = sediment temperature.

**Figure F1. A.** Nankai Trough off southwestern Japan, locus of Philippine Sea plate (PSP) subduction beneath Honshu and Shikoku islands. Yellow arrow = convergence direction between PSP and Japan. Rupture zones of 1944 and 1946 earthquakes are also shown. Stars = epicenter locations for earthquake nucleation. Red dashed box = B. In inset, EP = Eurasian plate, PP = Pacific plate, NAP = North American plate. (Continued on next page.)

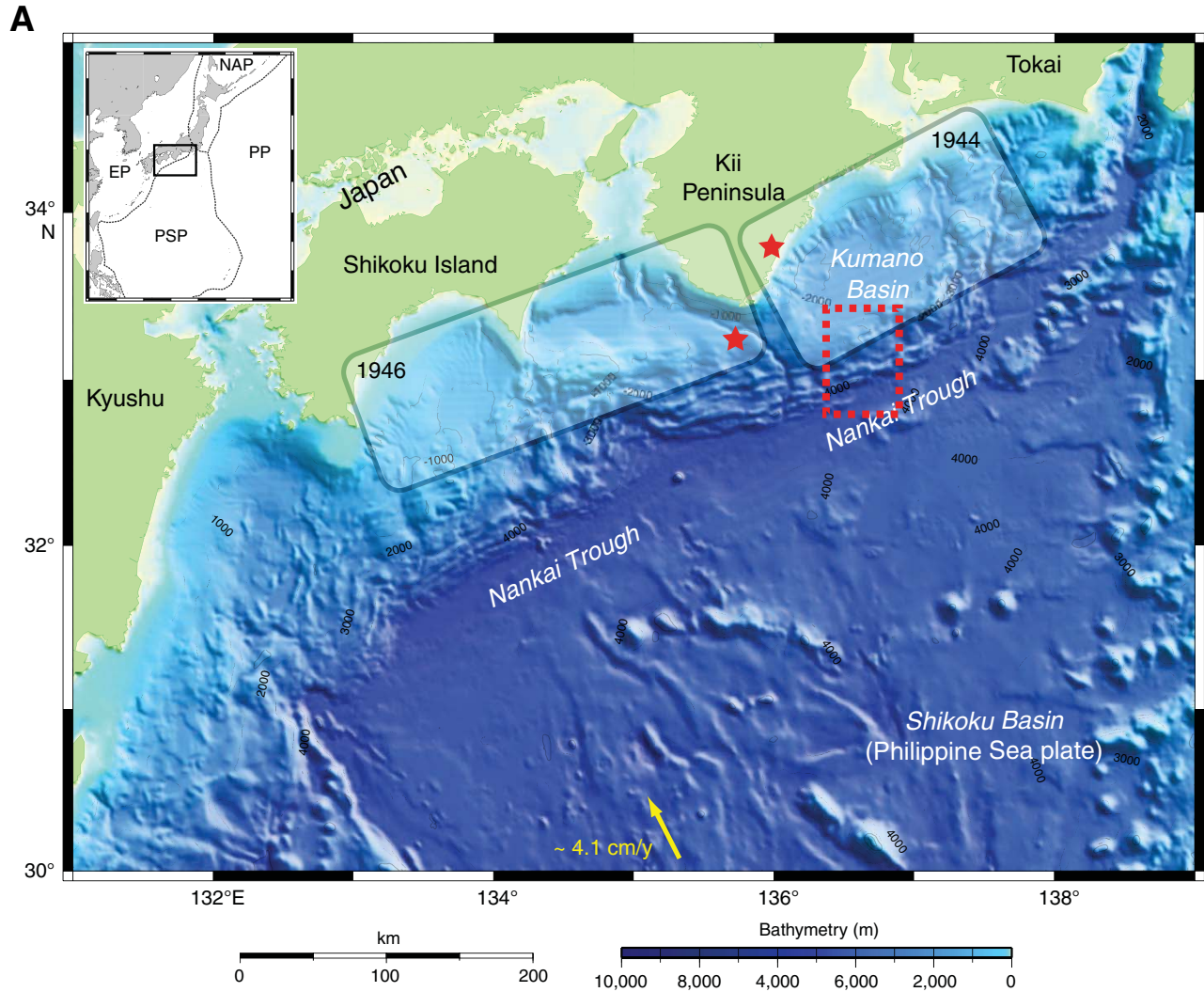
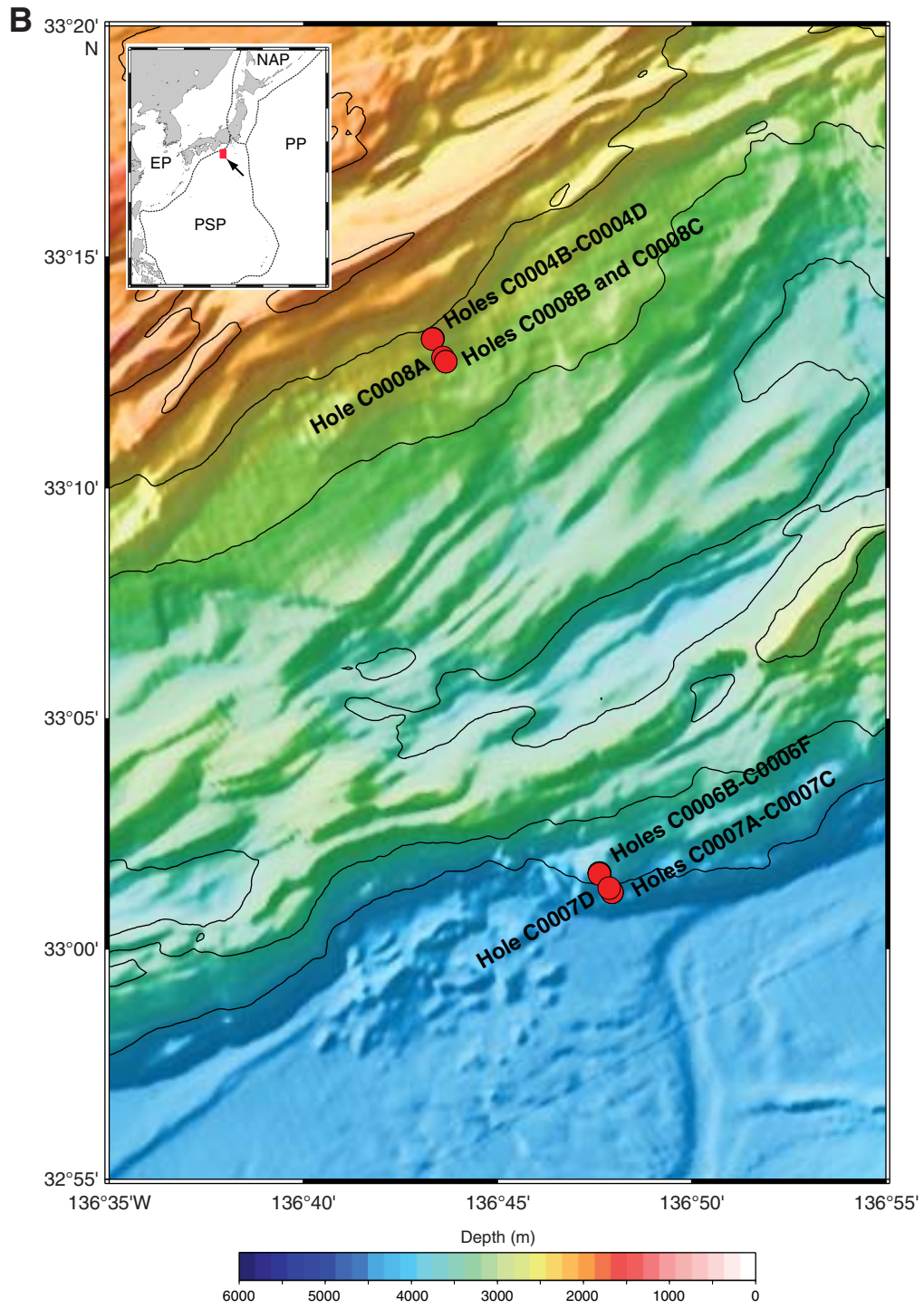


Figure F1 (continued). B. Locations of four drilling sites occupied during IODP Expedition 316.



**Figure F2.** Interpretation of Line KR0108-5 (after Park et al., 2002) showing locations of sites cored during IODP Expedition 316. Extent of coseismic rupture in 1944 Tonankai M 8.2 earthquake determined from tsunami (Tanioka and Satake, 2001) and seismic (Kikuchi et al., 2003) waveform inversions are shown above the seismic line by red and blue arrows, respectively.

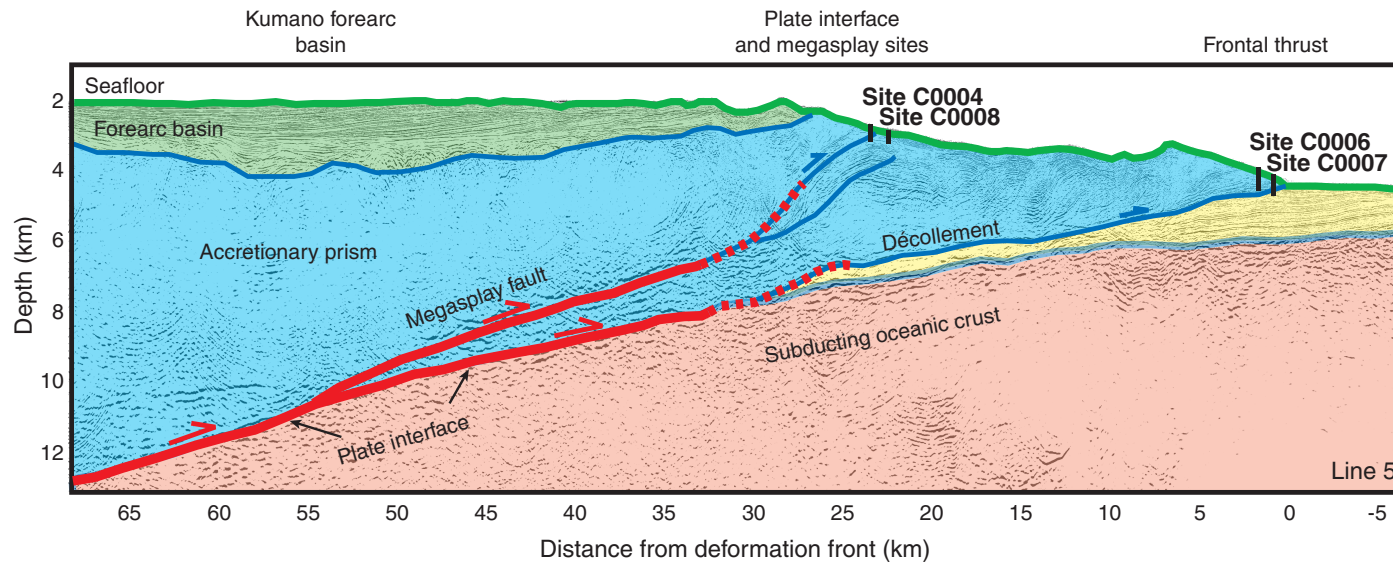


Figure F3. 3-D seismic profile crossing Sites C0004 and C0008 (Moore et al., 2007). VE = vertical exaggeration.

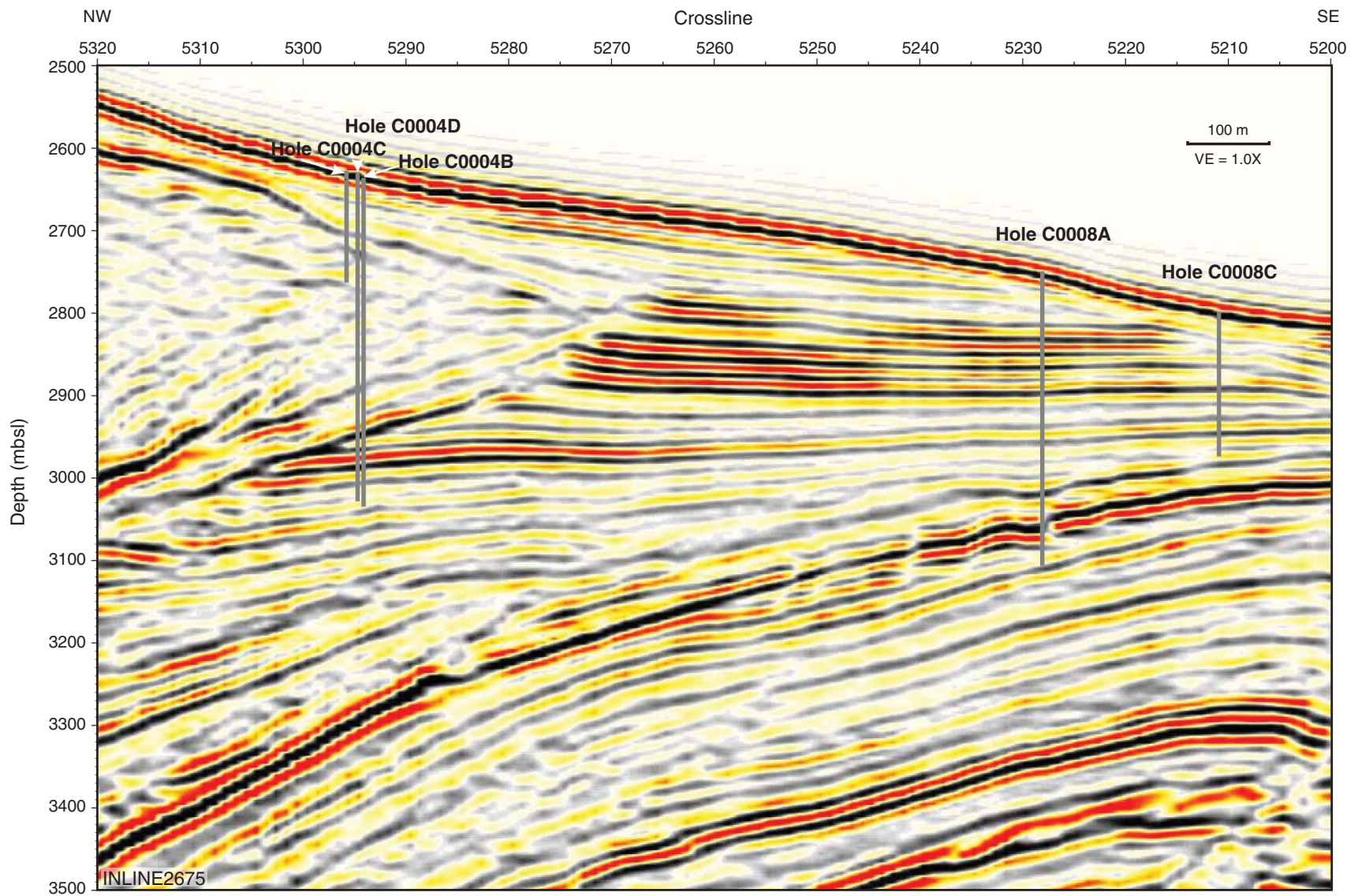


Figure F4. 3-D seismic profile crossing Sites C0006 and C0007 (Moore et al., 2007). VE = vertical exaggeration.

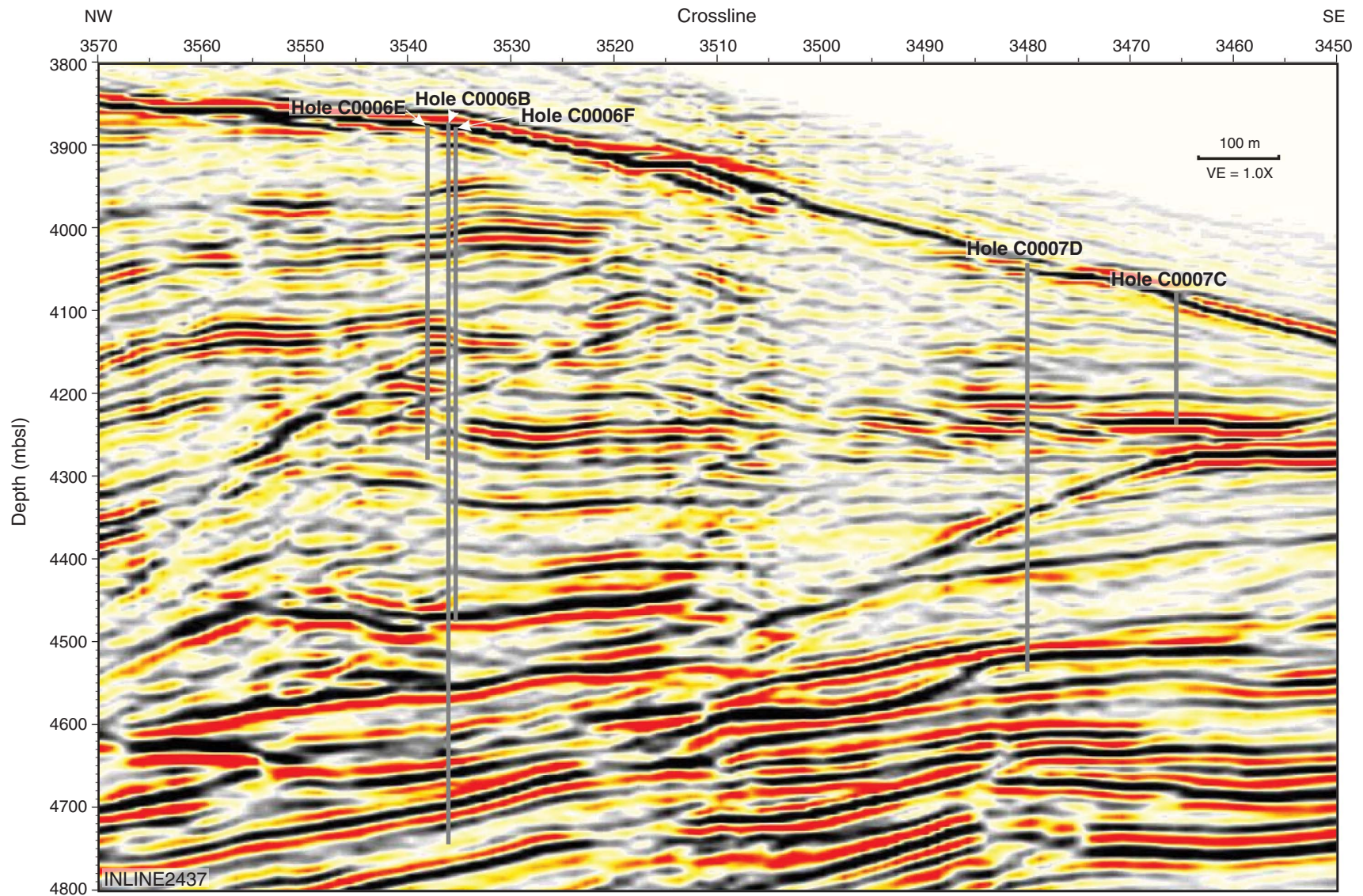


Figure F5. Site C0004 summary results. CSF = core depth below seafloor.

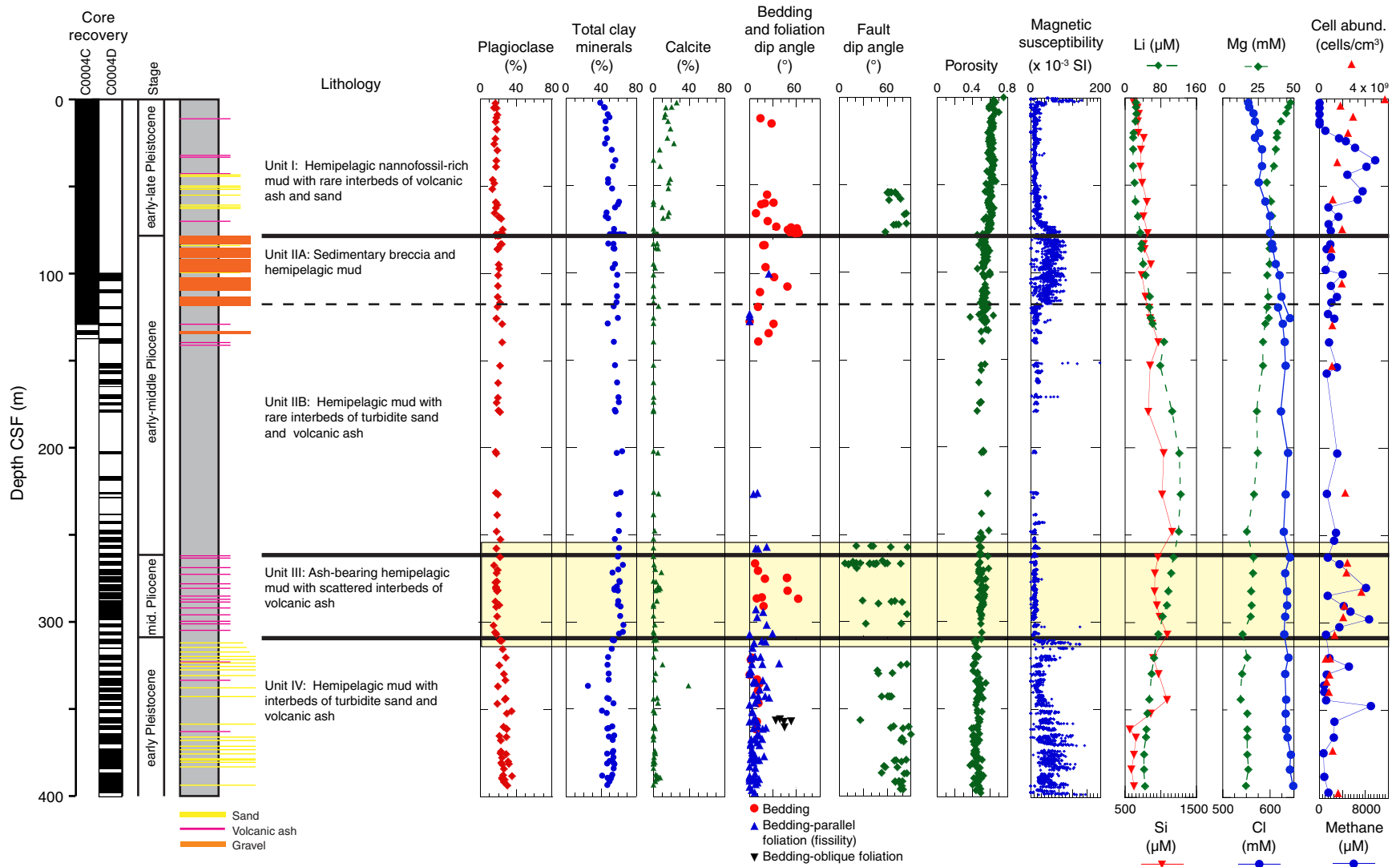
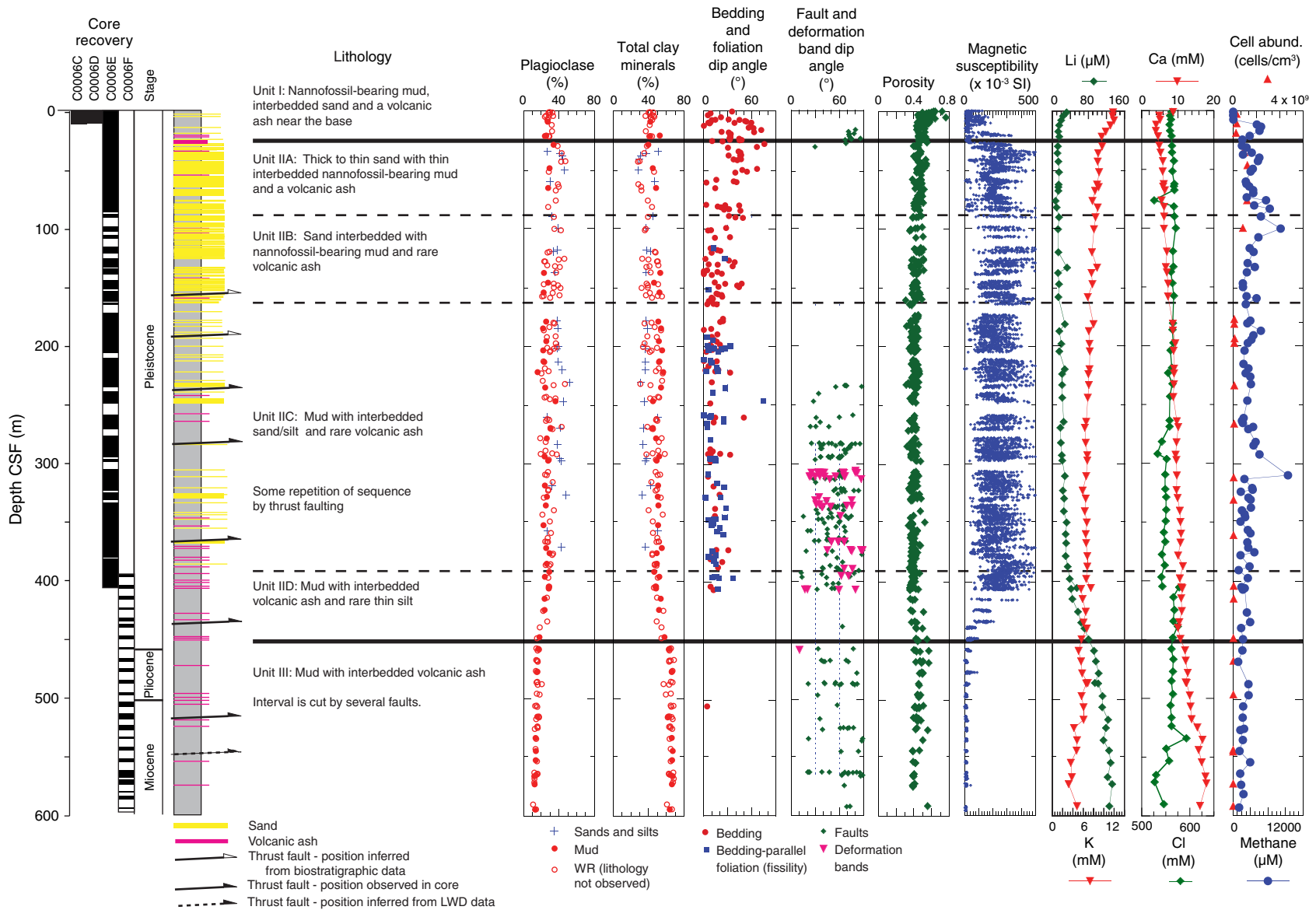
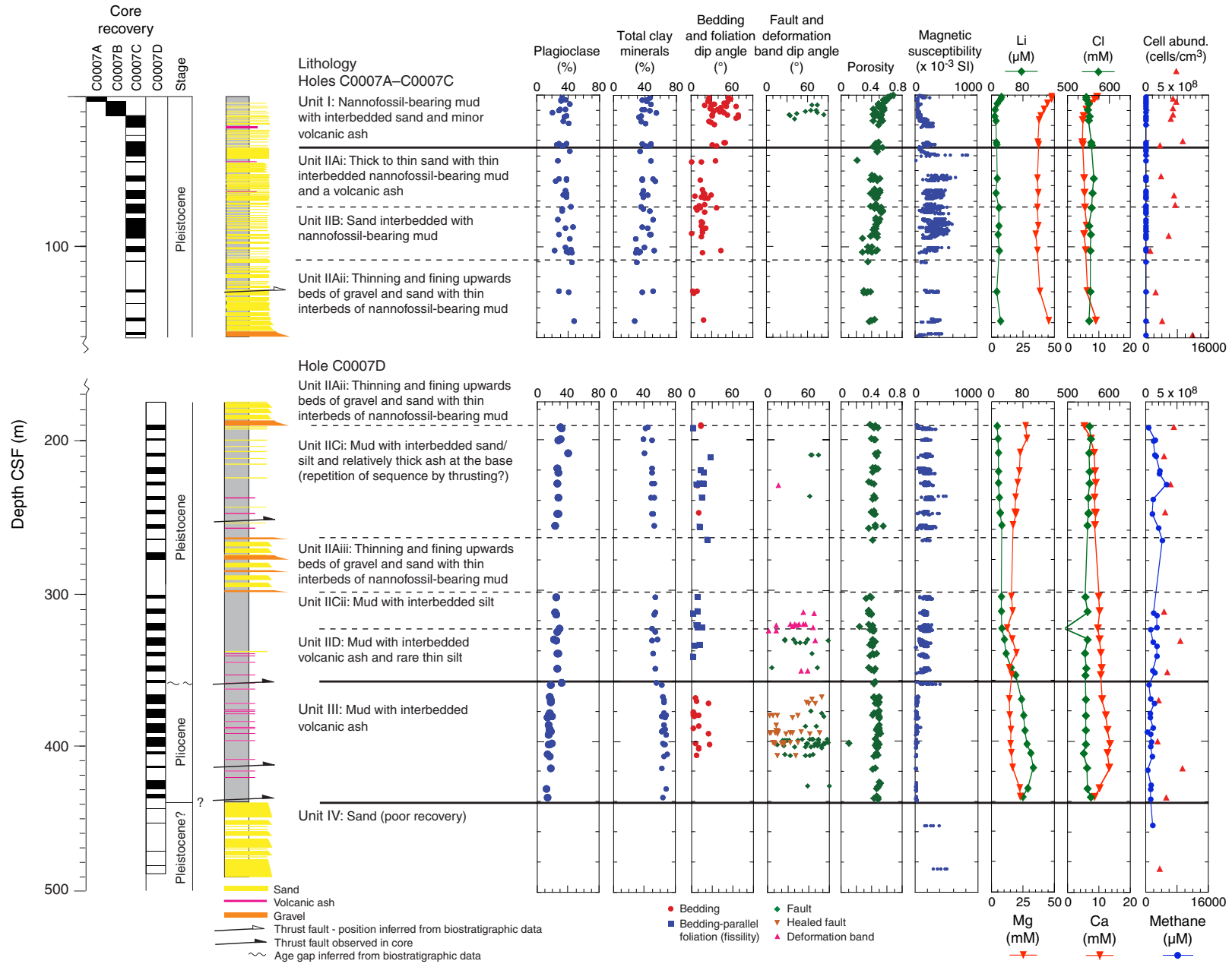




Figure F6. Site C0006 summary results. CSF = core depth below seafloor, LWD = logging-while-drilling, WR = whole-round.



**Figure F7.** Site C0007 summary results. Because of the distance (185 m) and prism thickening between Holes C0007A–C0007C and C0007D, they are not combined. CSF = core depth below seafloor.



**Figure F8.** Site C0008 summary results. Because of the distance (215 m) and possible normal faulting between Holes C0008A and C0008B–C0008C, they are not combined. CSF = core depth below seafloor.

