

Converting Winisis Database into Access or Excel Database

K Rajasekharan* & K M Nafala**

Abstract

The article describes how to convert a Winisis database into an Access database with *Iso2access* software and then re-converting the access database into excel database.

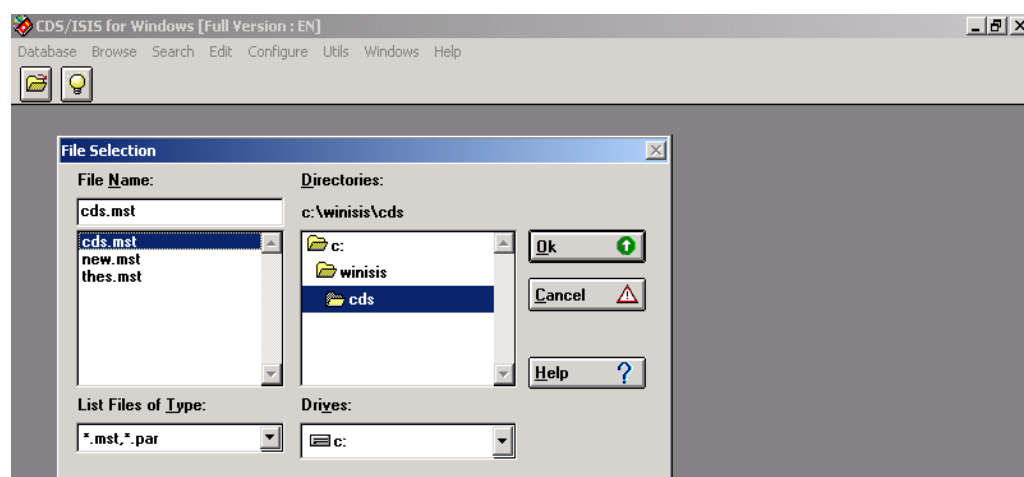
Introduction

Winisis database can be converted into an Access database. *Iso2access*¹ is the free software tool used for the purpose. The purpose of this guide is to show the process, with the help of screenshots, for the beginners.

Convert Winisis Database into .iso Format

The Winisis database with **.mst** extension need to be converted into **.iso** format using the **Export** process (File ⇒ Export). Open the Winisis database as follows :-

Figure 1 Opening the Winisis Database



* Librarian, Kerala Institute of Local Administration, Mulagunnathu Kavu – 680 581

** Library Computer Operator, Kerala Institute of Local Administration, Mulagunnathukavu, Thrissur

¹ The software is available at <http://consag.tij.uia.mx/cgi-bin/ftp/file.pl?file=Isis/iso2access.exe> for download

Click on **Export** menu, as follows, to convert **.mst** into **.iso** format.

Figure 2 Starting Export Process

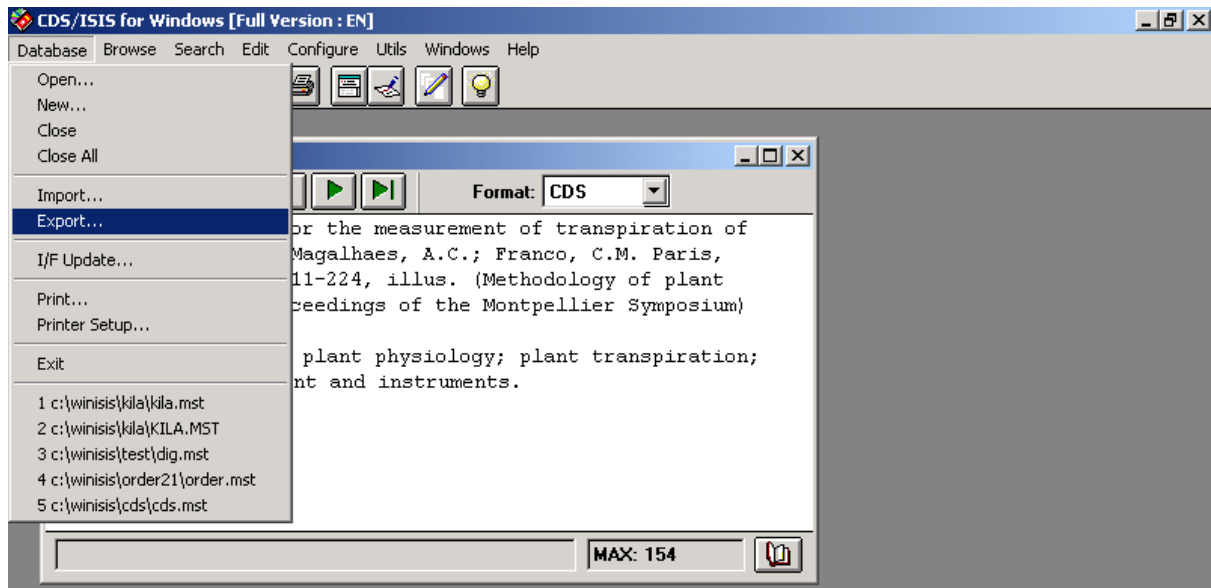
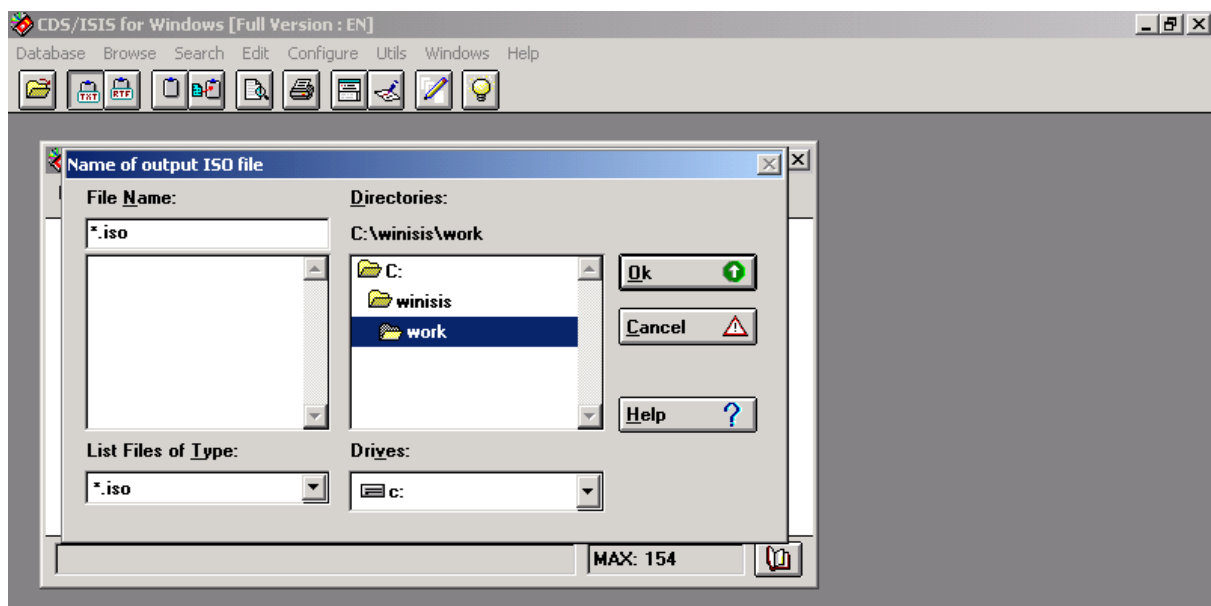
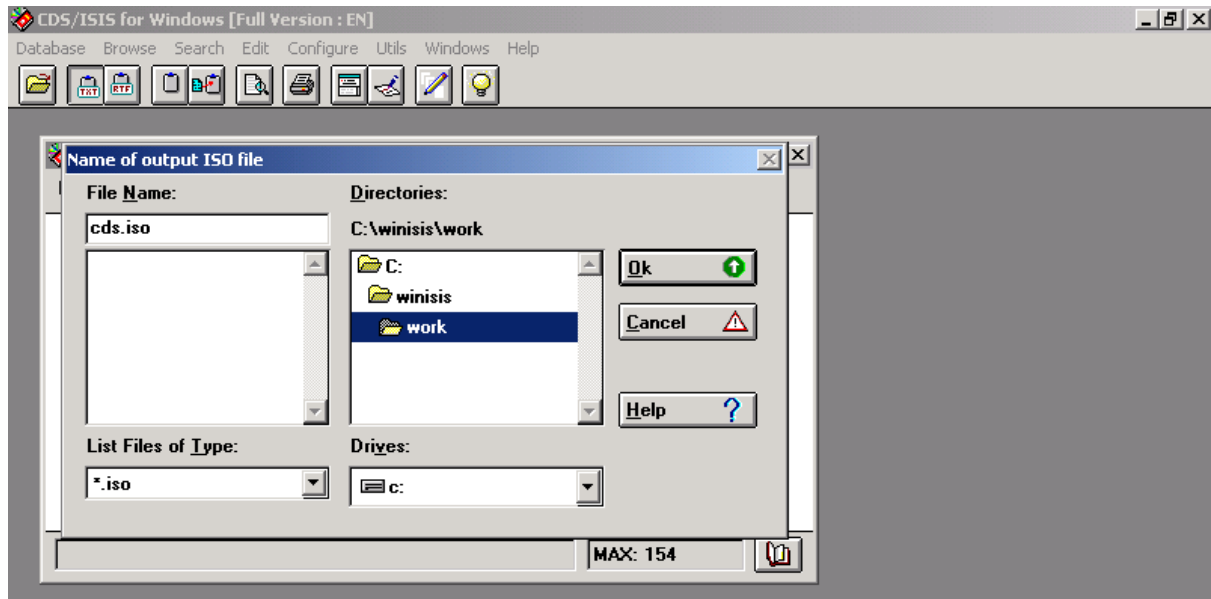


Figure 3 Continue Export Process



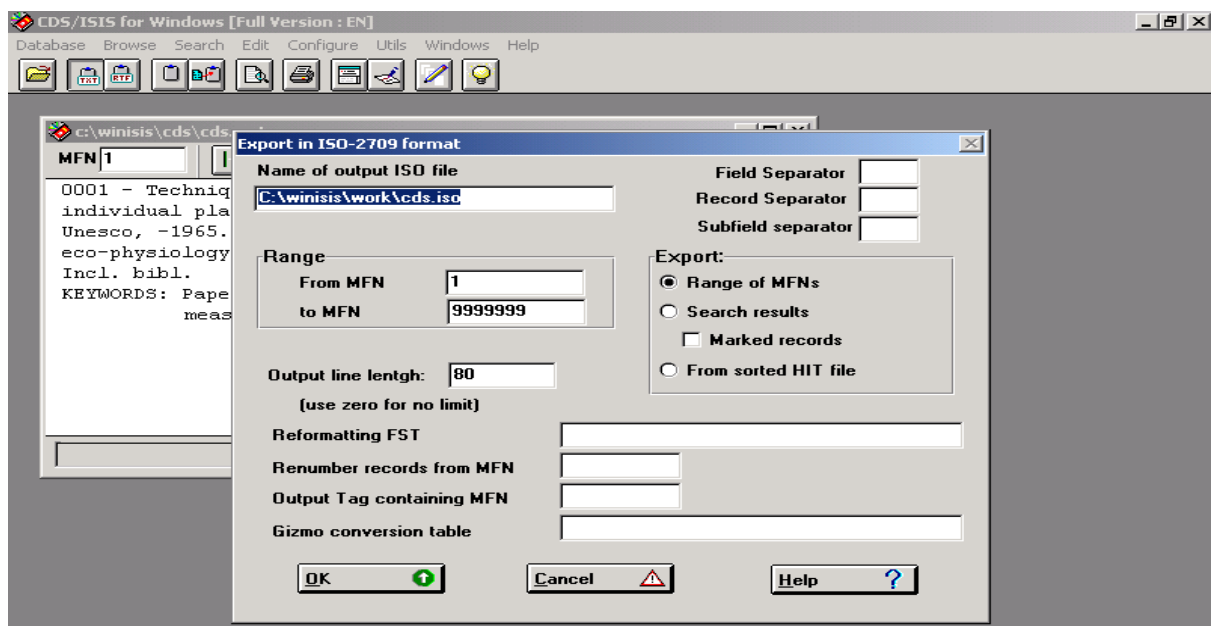
Give a name (such as *cds.iso*) to **.iso** file.

Figure 4 Named the file as *cds.iso*



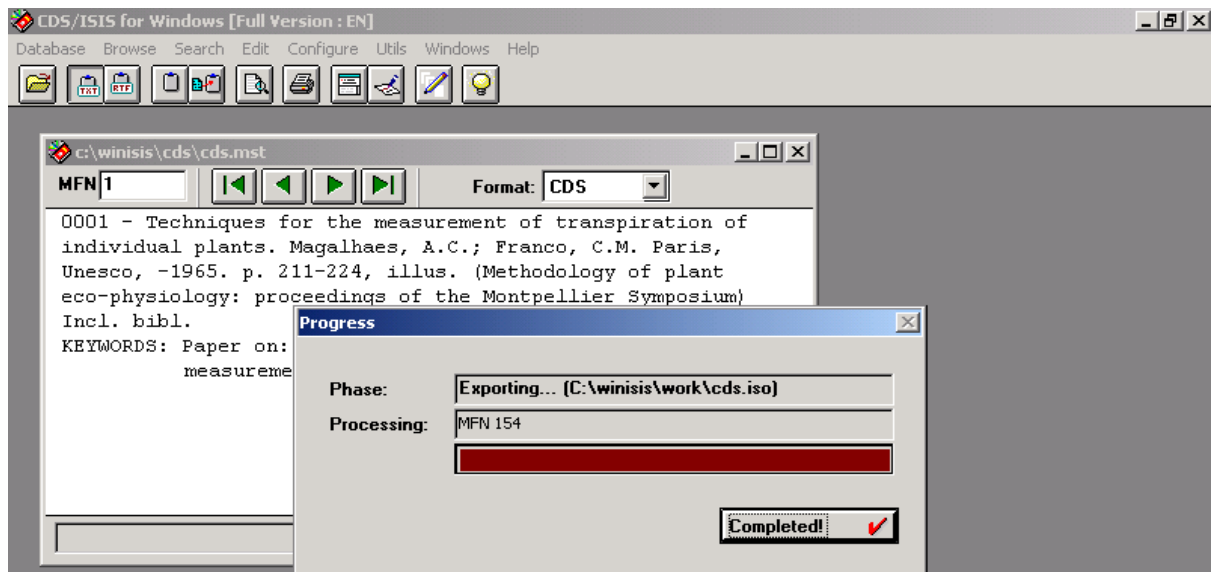
Click on the Ok button

Figure 5 Continue the Export Process



Click on the OK button.

Figure 6 Export completed



Click on the **Completed** button, when the export is completed.

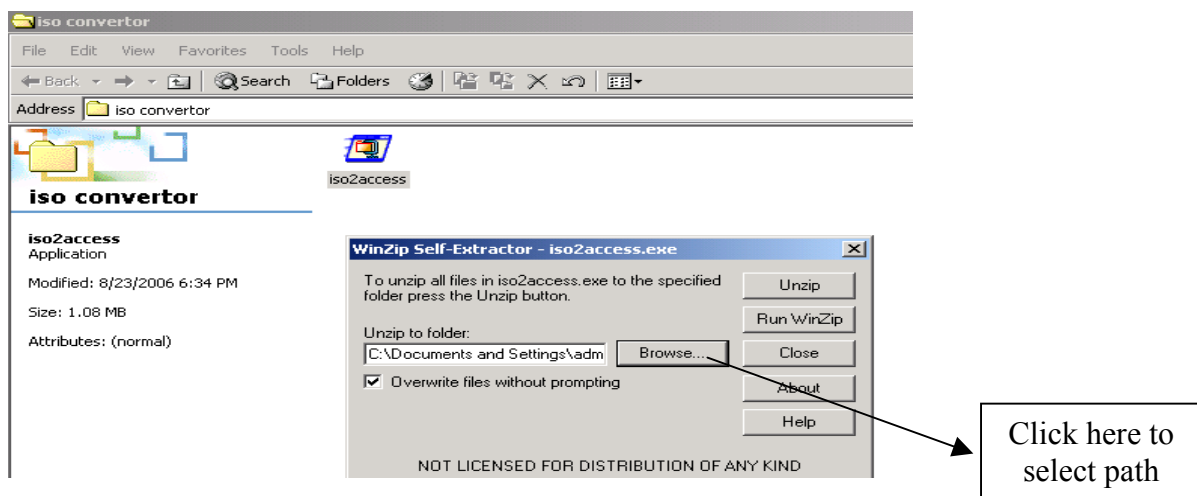
Installation of ISOconvert

Double Click on the **iso2access** zip file.

Figure 7

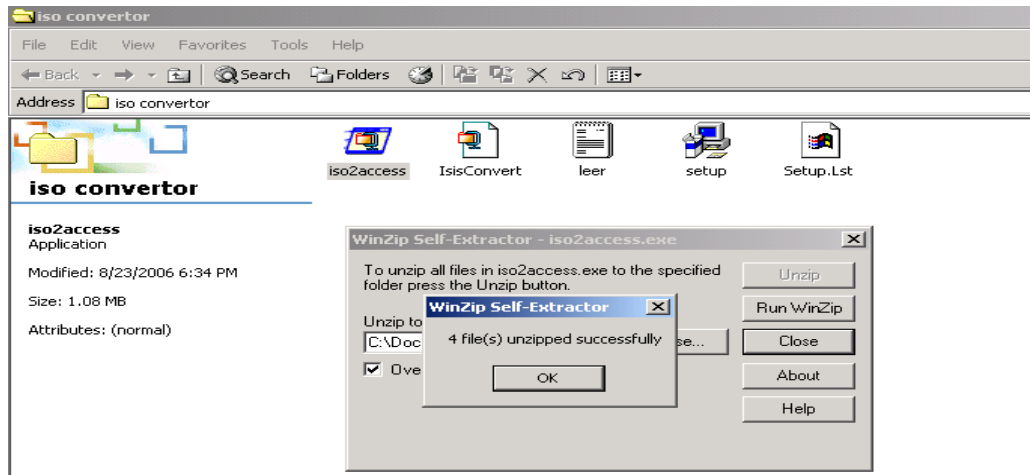


Figure 8



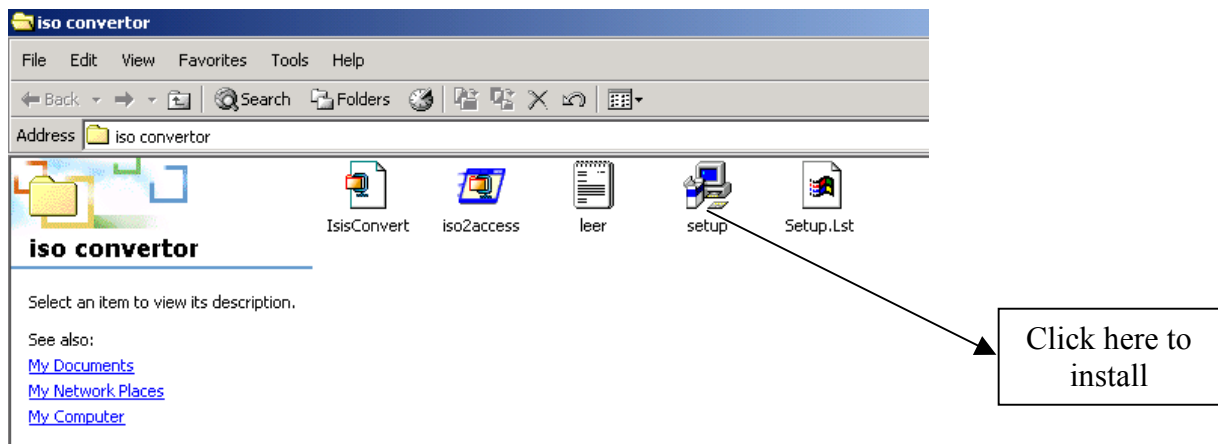
In the above screen, select the path of the folder (you can choose any folder) where the zip file should be unzipped. Then click the Unzip button and you will get the following screen.

Figure 9



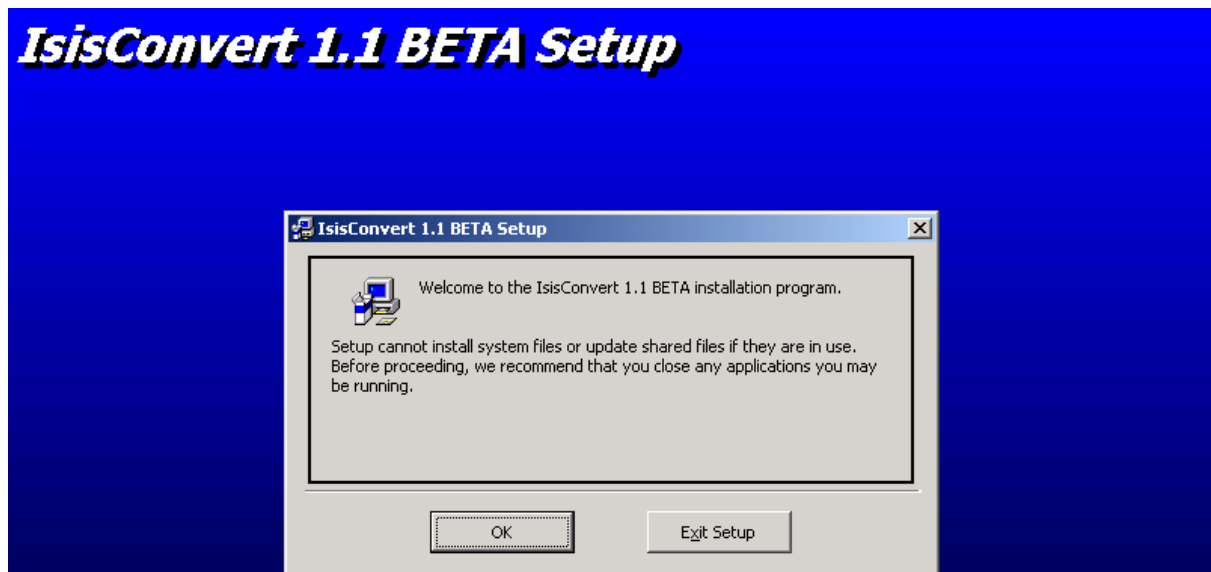
The four unzipped files will look as follows :-

Figure 10



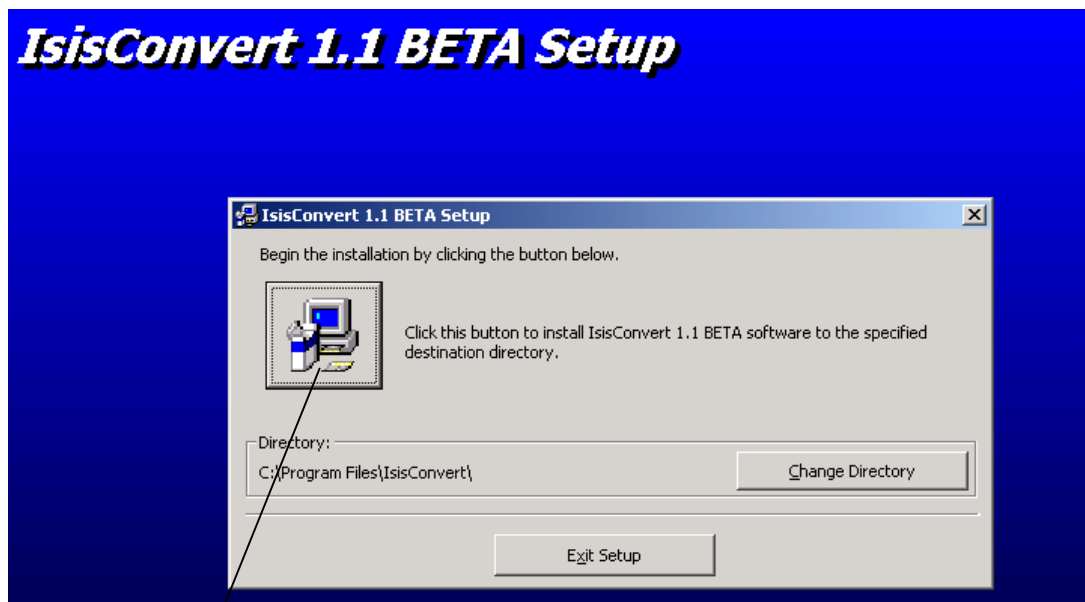
Double click on the **setup.exe** file to start the installation process as follows:-

Figure 11



Click on the **OK** button.

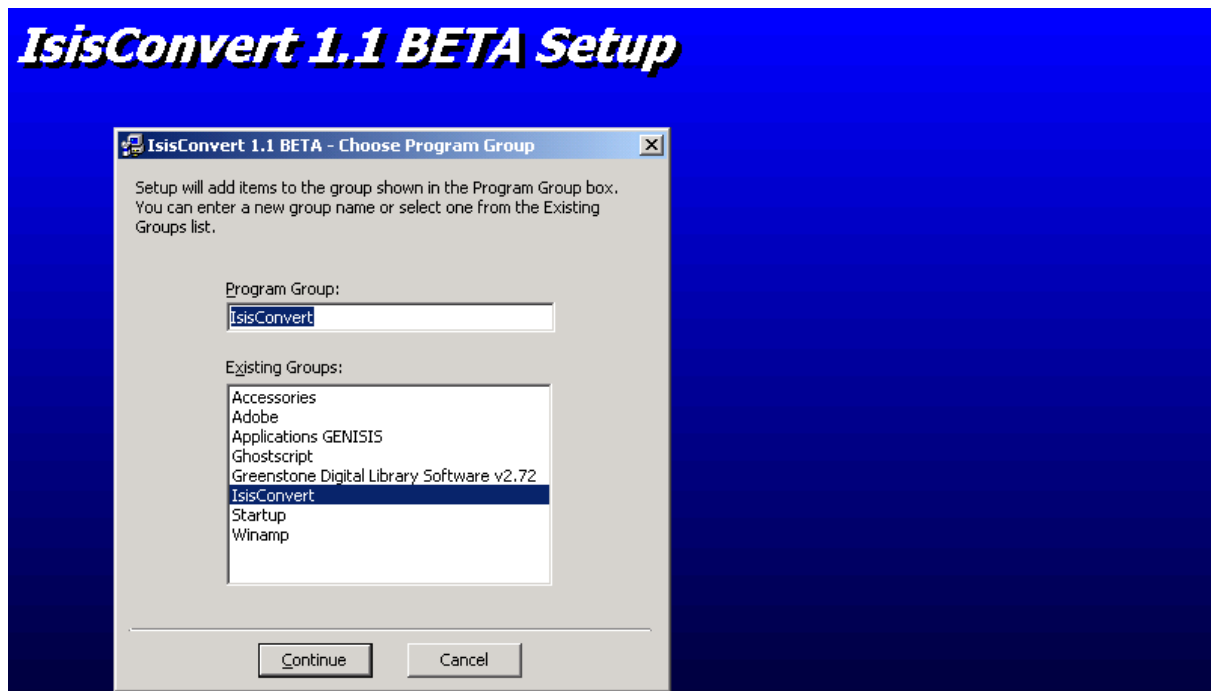
Figure 12



Click on the
computer icon

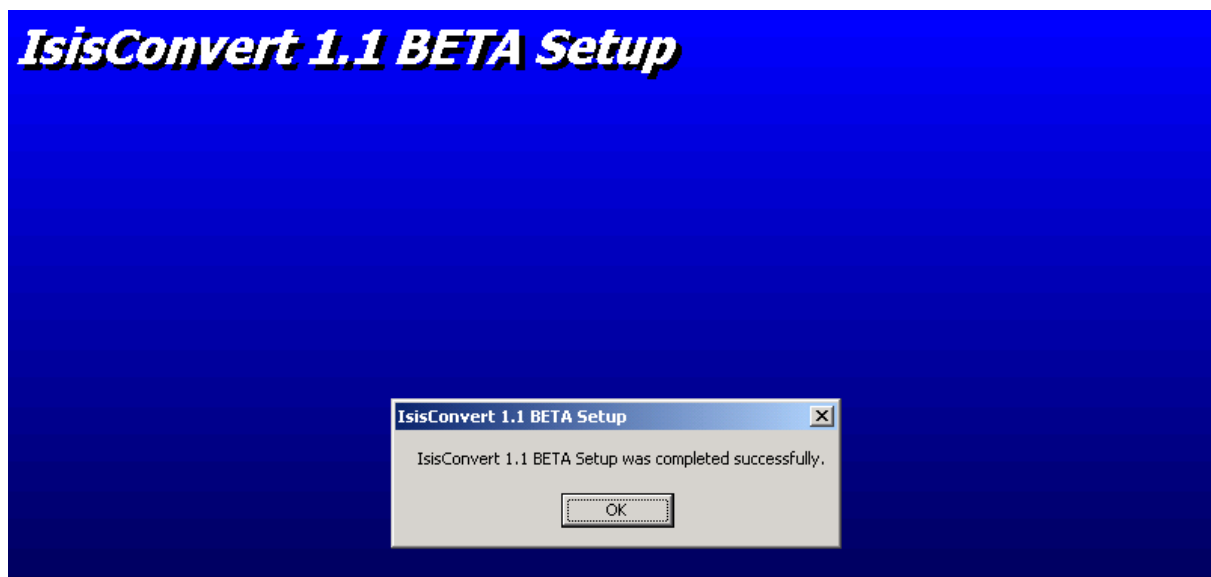
Click on the **computer icon** to continue.

Figure 13



Click on the **Continue** button.

Figure 14

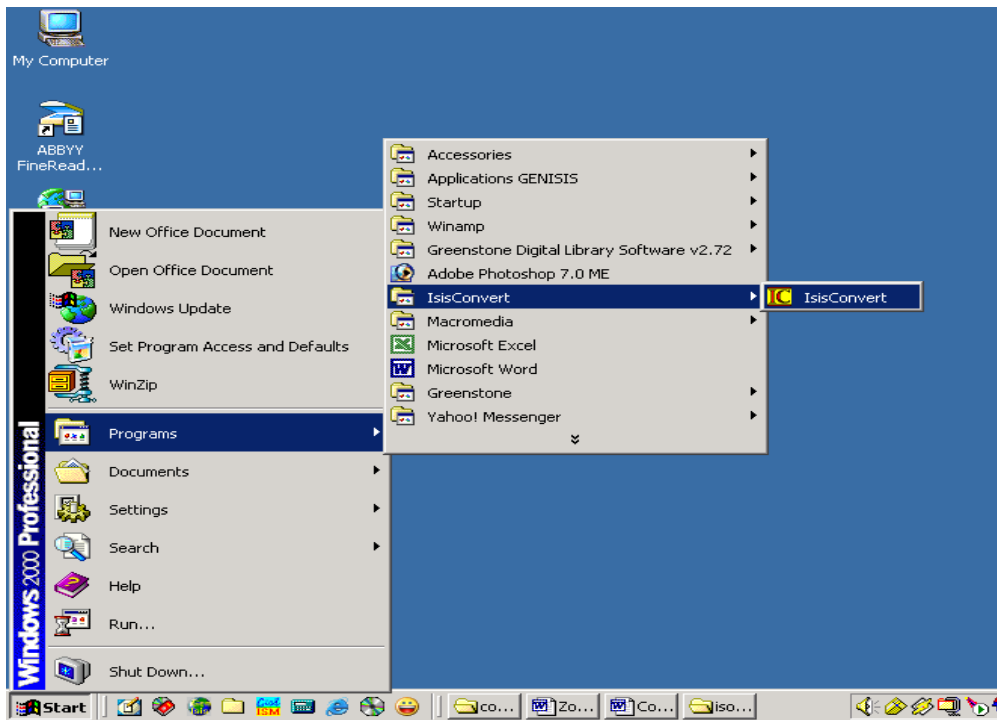


The installation process is completed. Click on the **OK** button.

Run the IsoConverter Program

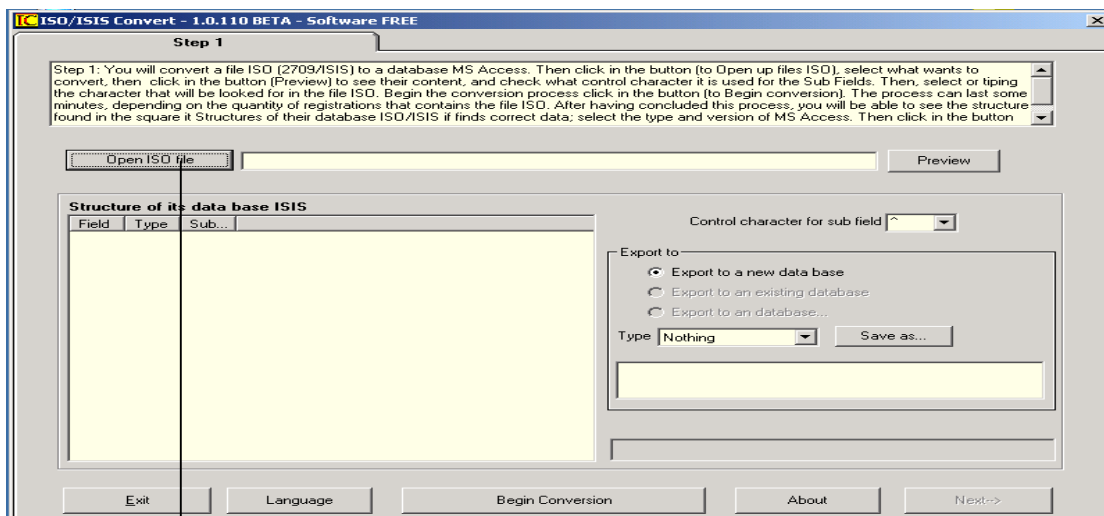
Open the IsoConvert program by selecting **Start** ⇒ **Programs** ⇒ **IsisConvert**⇒ **IsisConvert**

Figure 15



An opened Isoconvert program window will look as follows:-

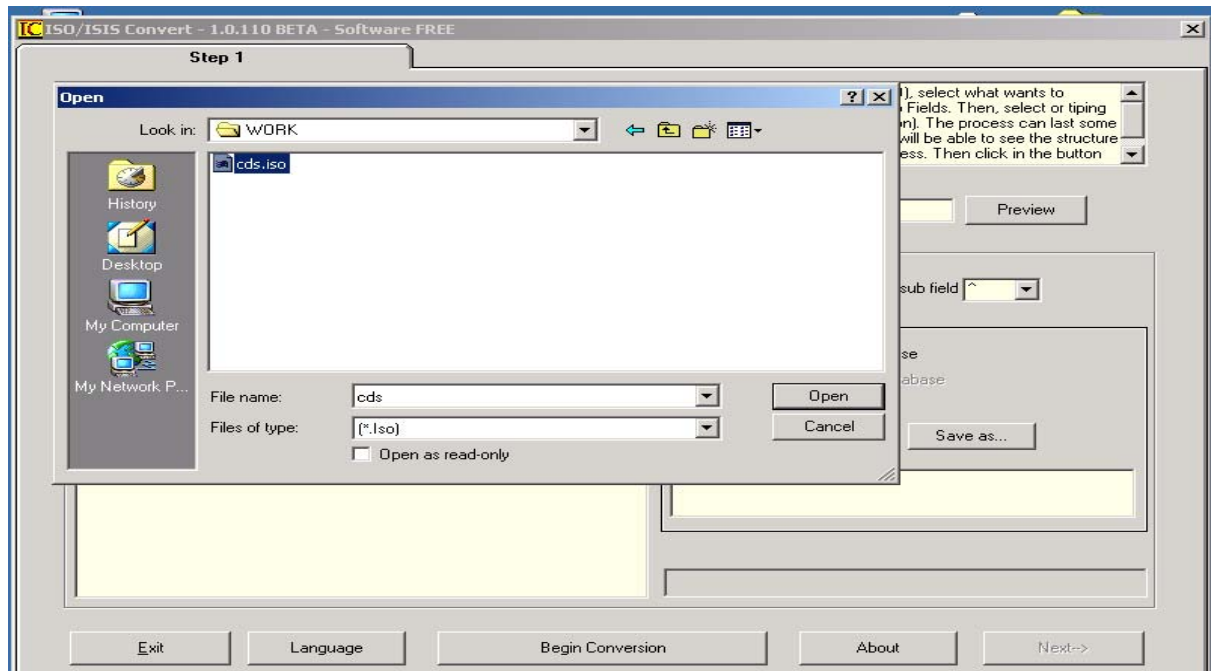
Figure 16



Click here to open the ISO file

Click on the **Open the ISO file** button and the following screen will appear, if the computer has Winisis installation.

Figure 17 Select the iso file



Select the **ISO** file and click on the **Open** button.

Figure 18 iso file Selected

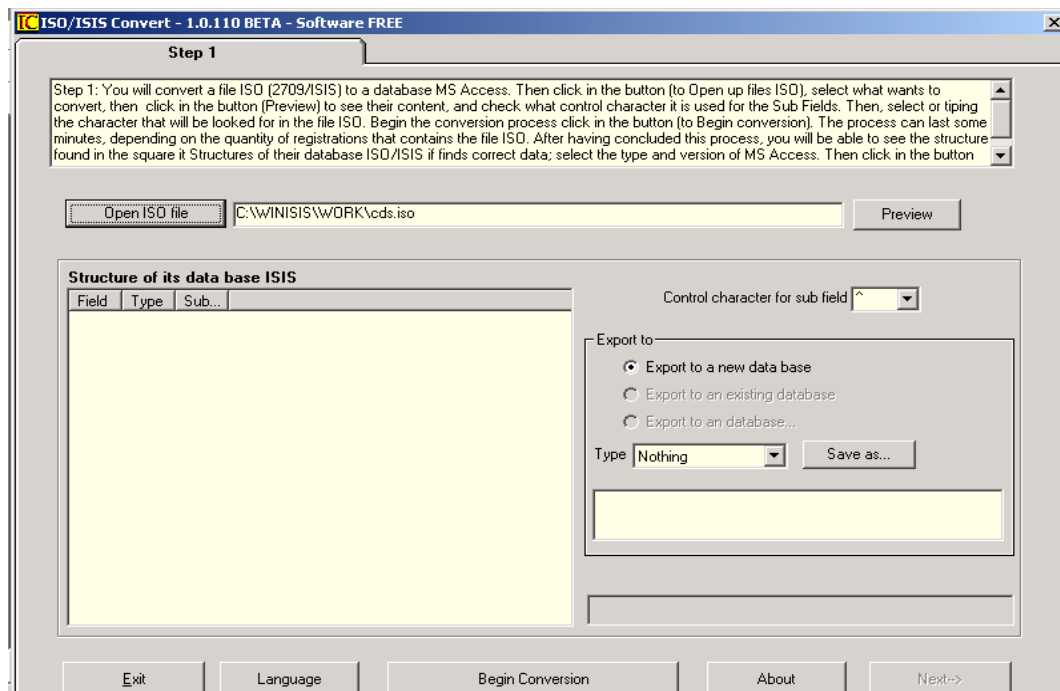
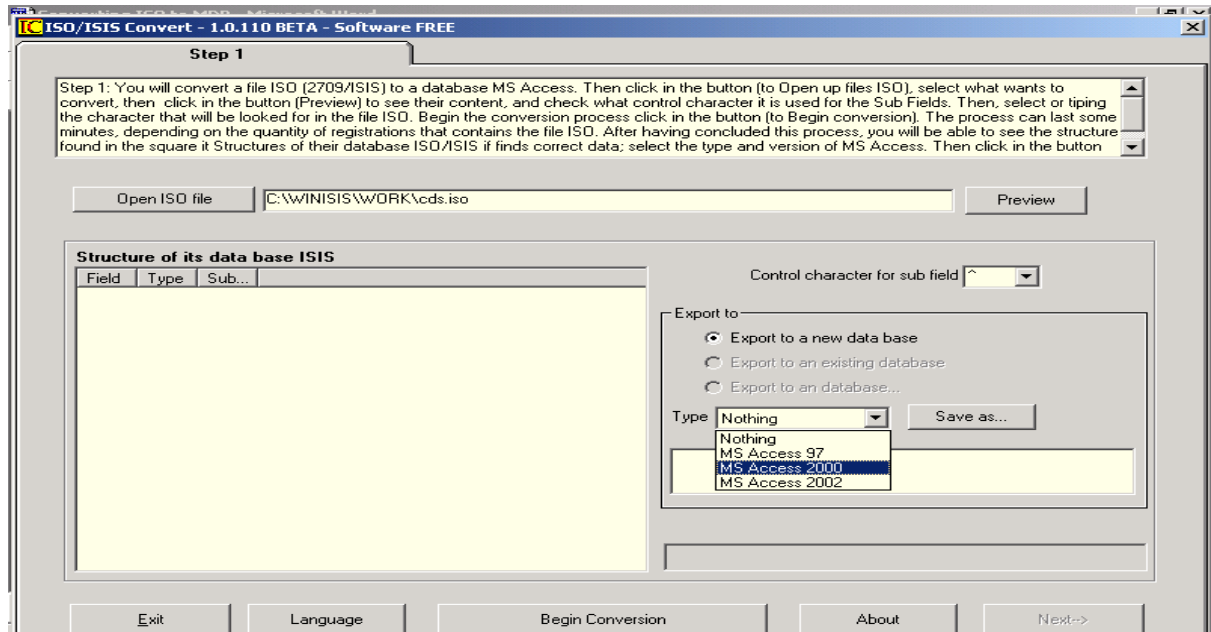
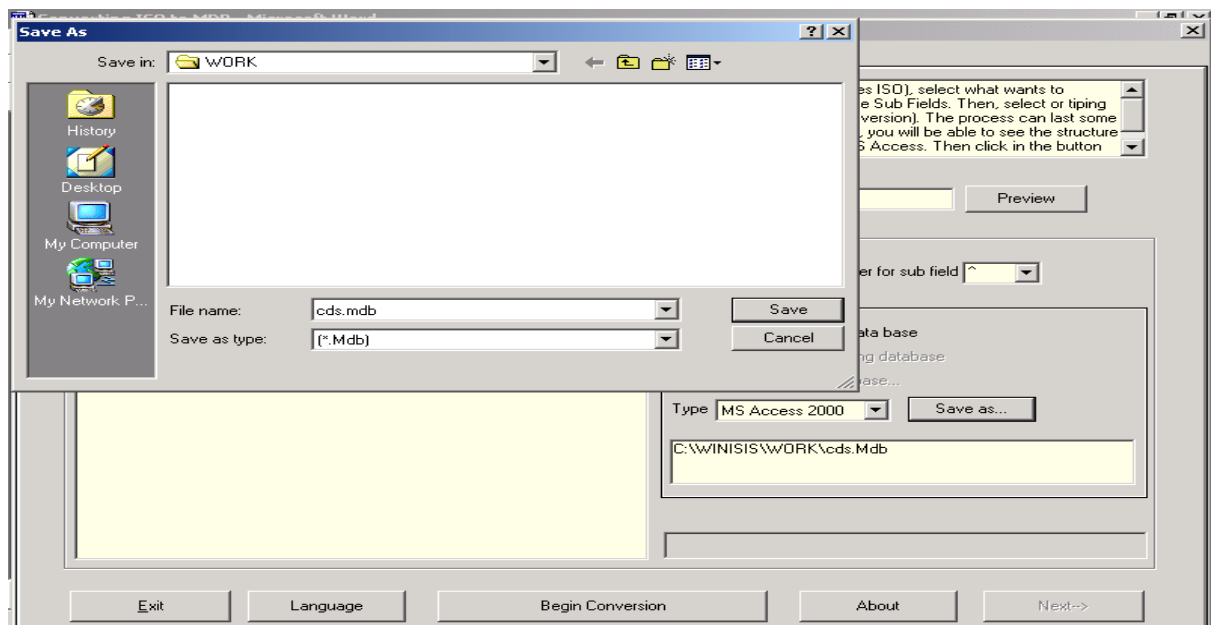


Figure 19 Chose the File Type as MS Access 2000



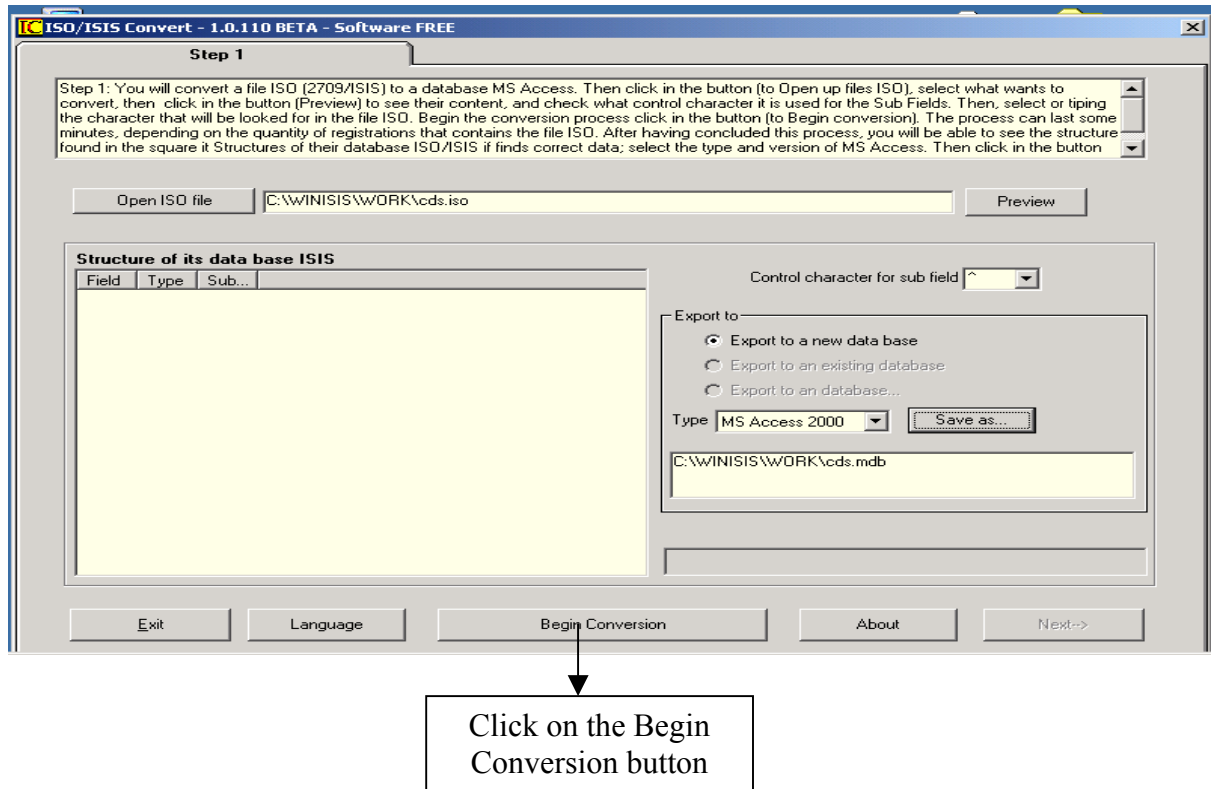
In the above window select **Type** as **MS Access 2000** and click on the **Save as** button.

Figure 20 Select a Filename for Access Database



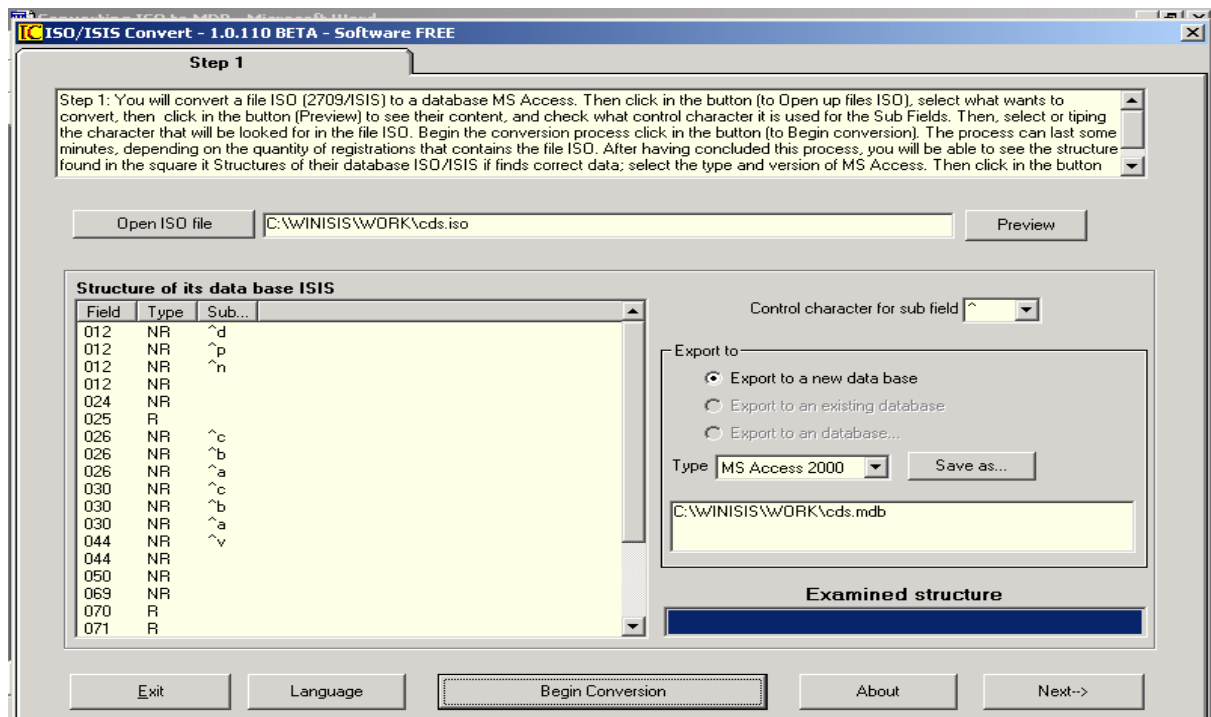
Give a filename to **mdb** (eg. *cds.mdb*) and click **Save** button. Then the following screen will appear.

Figure 21 Beginning Conversion



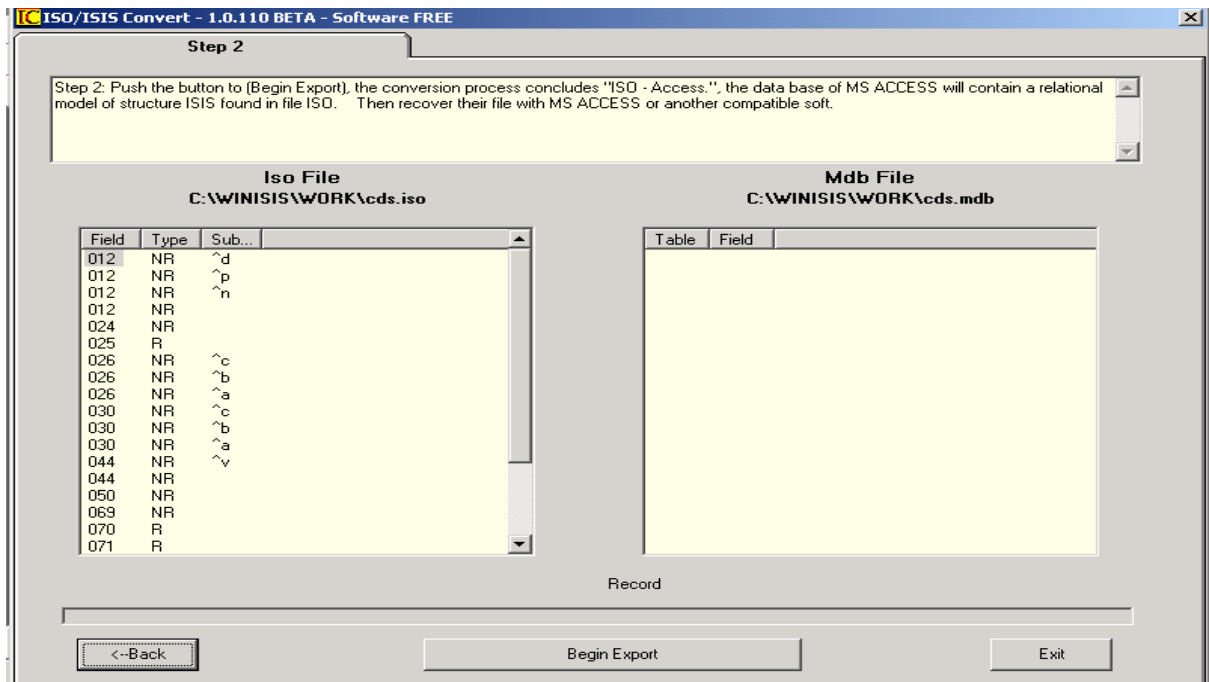
Click on the **Begin Conversion** button.

Figure 22 Conversion Process Started



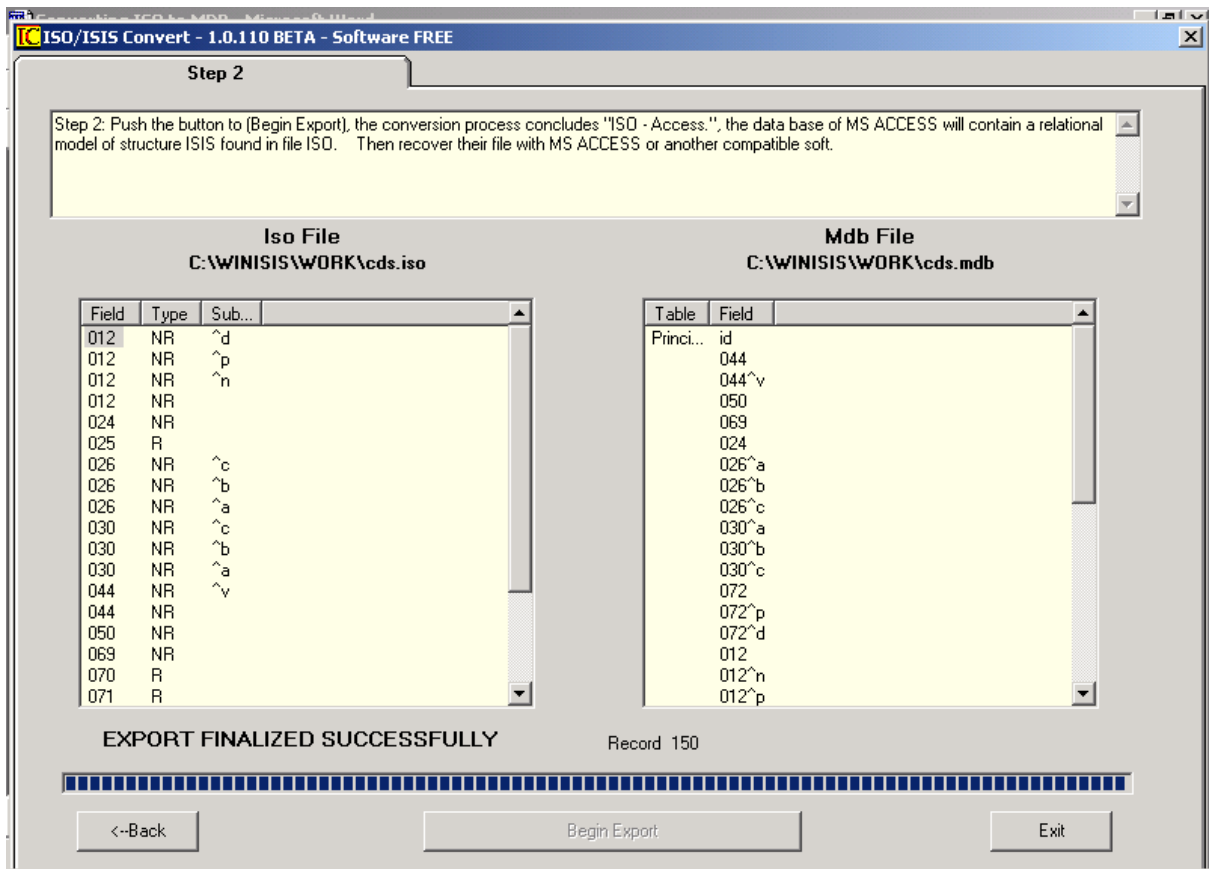
Click on the **Next** button.

Figure 23



Click on the **Begin Export** button.

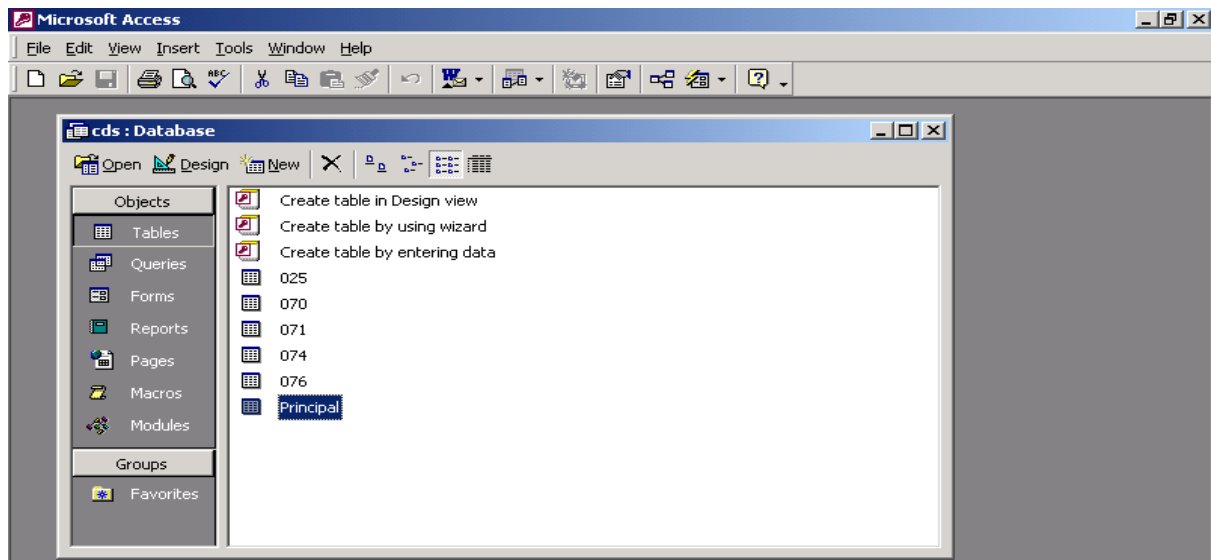
Figure 24 Export Process



When the export process is over, click on the **Exit** button. You will get **cds.mdb** file in **C:\WINISIS\WORK** folder.

Then open the **cds.mdb** file with *Access 2000* as follows.

Figure 25 An Opened Microsoft Access Window



Select and double click on the **Principal** table of the access database as above. The opened window will look as follows:-

Figure 26 Converted as Access database

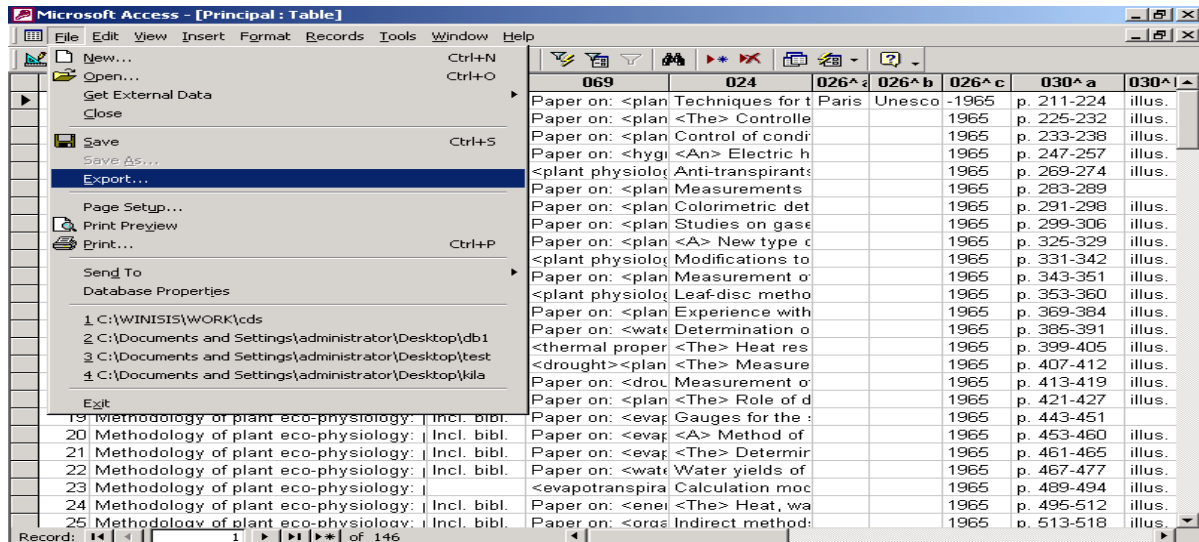
id	044	050	069	024	026^a	026^b	026^c	030^a	030^b
1	Methodology of plant eco-phy	Incl. bibl.	Paper on: <plan	Techniques for t	Paris	Unesco	1965	p. 211-224	illus.
2	Methodology of plant eco-phy	Incl. bibl.	Paper on: <plan	<The> Controlle			1965	p. 225-232	illus.
3	Methodology of plant eco-phy	Incl. bibl.	Paper on: <plan	Control of condi			1965	p. 233-238	illus.
4	Methodology of plant eco-phy	Incl. bibl.	Paper on: <hygi	<An> Electric h			1965	p. 247-257	illus.
5	Methodology of plant eco-phy	Incl. bibl.	<plant physiolo	Anti-transpirant			1965	p. 269-274	illus.
6	Methodology of plant eco-phy	Incl. bibl.	Paper on: <plan	Measurements			1965	p. 283-289	
7	Methodology of plant eco-phy	Incl. bibl.	Paper on: <plan	Colorimetric det			1965	p. 291-298	illus.
8	Methodology of plant eco-phy	Incl. bibl.	Paper on: <plan	Studies on gase			1965	p. 299-306	illus.
9	Methodology of plant eco-phy	Incl. bibl.	Paper on: <plan	<A> New type c			1965	p. 325-329	illus.
10	Methodology of plant eco-phy	Incl. bibl.	<plant physiolo	Modifications to			1965	p. 331-342	illus.
11	Methodology of plant eco-phy	Incl. bibl.	Paper on: <plan	Measurement o			1965	p. 343-351	illus.
12	Methodology of plant eco-phy	Incl. bibl.	<plant physiolo	Leaf-disc metho			1965	p. 353-360	illus.
13	Methodology of plant eco-phy	Incl. bibl.	Paper on: <plan	Experience with			1965	p. 369-384	illus.
14	Methodology of plant eco-phy	Incl. bibl.	Paper on: <wate	Determination o			1965	p. 385-391	illus.
15	Methodology of plant eco-phy	Incl. bibl.	<thermal proper	<The> Heat res			1965	p. 399-405	illus.
16	Methodology of plant eco-phy	Incl. bibl.	<drought><plan	<The> Measure			1965	p. 407-412	illus.
17	Methodology of plant eco-phy	Incl. bibl.	Paper on: <drou	Measurement o			1965	p. 413-419	illus.
18	Methodology of plant eco-phy	Incl. bibl.	Paper on: <plan	<The> Role of d			1965	p. 421-427	illus.
19	Methodology of plant eco-phy	Incl. bibl.	Paper on: <evap	Gauges for the			1965	p. 443-451	
20	Methodology of plant eco-phy	Incl. bibl.	Paper on: <evap	<A> Method of			1965	p. 453-460	illus.
21	Methodology of plant eco-phy	Incl. bibl.	Paper on: <evap	<The> Determir			1965	p. 461-465	illus.
22	Methodology of plant eco-phy	Incl. bibl.	Paper on: <wate	Water yields of			1965	p. 467-477	illus.
23	Methodology of plant eco-phy	Incl. bibl.	<evapotranspira	Calculation mod			1965	p. 489-494	illus.
24	Methodology of plant eco-phy	Incl. bibl.	Paper on: <enei	<The> Heat, wa			1965	p. 495-512	illus.
25	Methodology of plant eco-phy	Incl. bibl.	Paper on: <orga	Indirect method			1965	p. 513-518	illus.

The Winisis database is now converted into an access database.

Converting Access Database into Excel Database

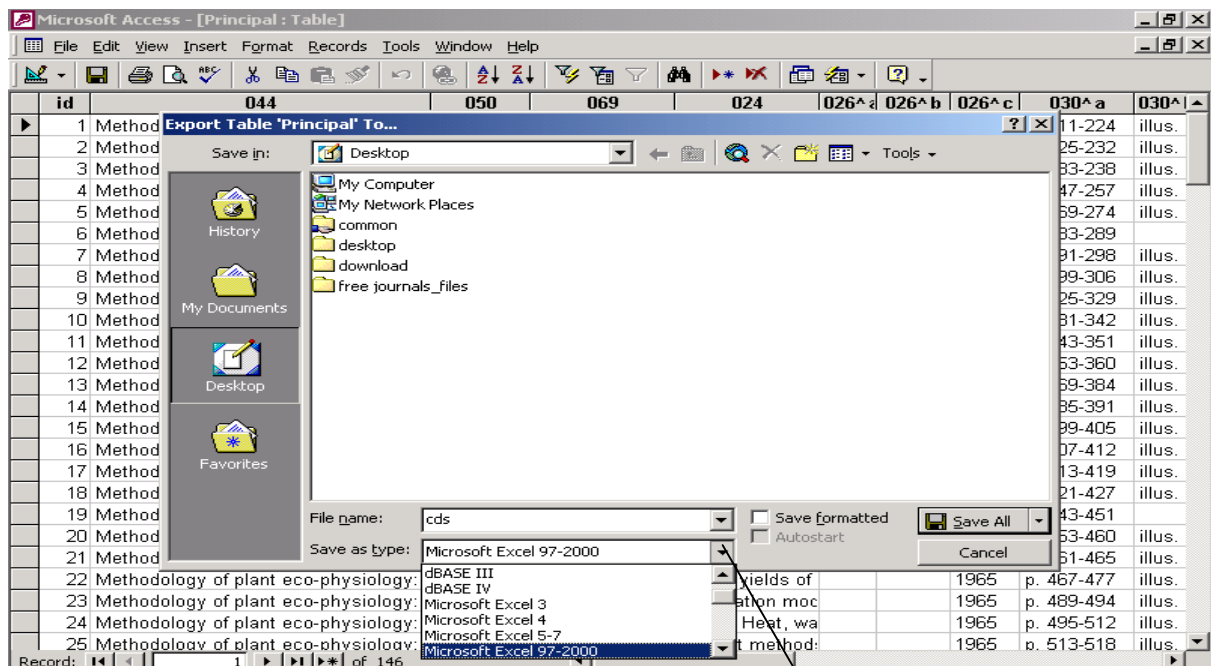
The above Access database can be converted in to Microsoft Excel database by using **Export** function.

Figure 27 Exporting Access Database



Click on the **Export** under **File** menu.

Figure 28 Choose the Location to Save Excel File

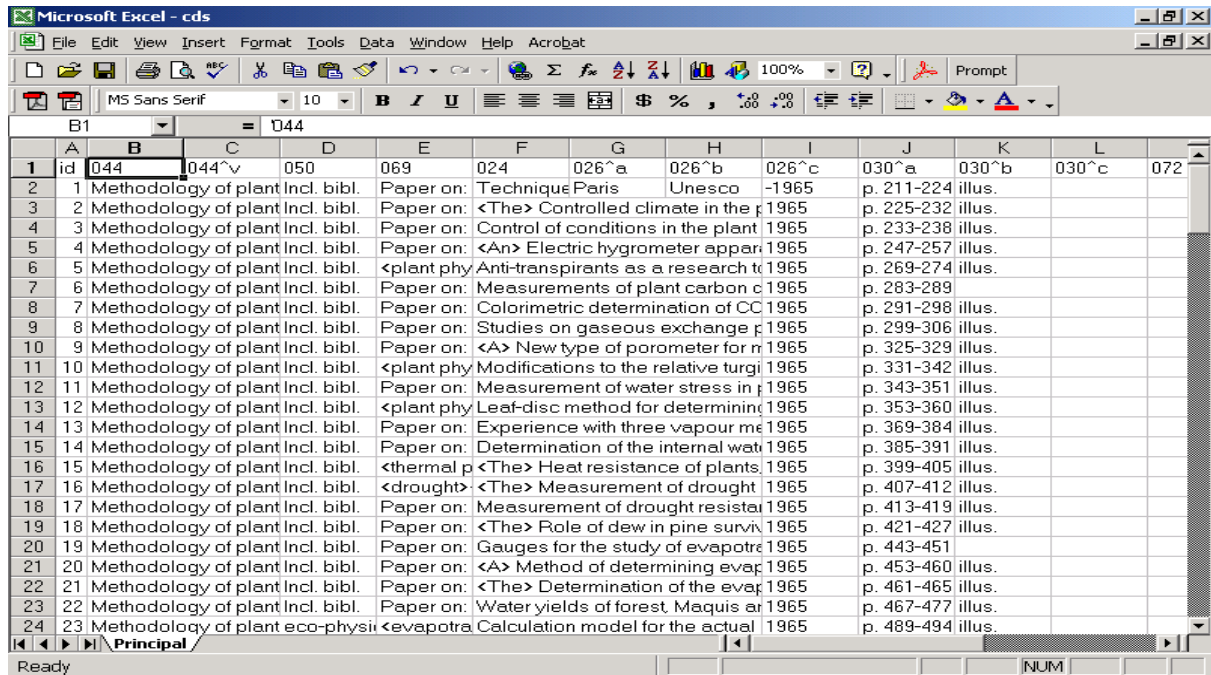


Select Save as type

Give a file name (cds) and select **Save as type** as **Microsoft Excel 97-2000**. Then click the **Save all** button.

Then the database will be converted into **cds.xls** file as follows.

Figure 29 An Opened Microsoft Excel Window



Conclusion

This write-up shows the modality to convert a Winisis database into Access database with free software **Iso2access** first and then re-converting it into an Excel database. The procedure is very simple and the conversion is useful for many purposes.
