



RDECOM

Development of Melt Spun Polymer Nanofibers



TECHNOLOGY DRIVEN. WARFIGHTER FOCUSED.

Stephen Fossey¹, Elizabeth A. Welsh¹, Peter Stenhouse¹, Michael S. Sennett^{1,2}

¹ Fibers & Material Physics Division, U.S. Army Natick Soldier Research, Development, & Engineering Center (NSRDEC), Natick MA

² Current address: U. S. Army International Technology Center-Atlantic, London UK



Outline



- Introduction
 - Rationale
 - Fiber spinning and structure development
 - Nomenclature
- Fiber spinning setup and fiber size calculations
- Characterization
 - X-Ray Diffraction
 - Differential Scanning Calorimetry
 - Temperature Modulated - DSC
 - Atomic Force Microscopy
- Future work
 - Tri-component extruder – NRX-11
 - New Islands-in-the-Sea spin pack



Introduction



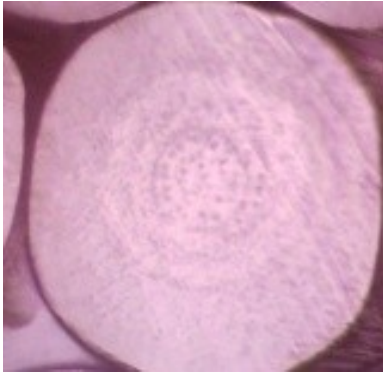
- **Objective:**
 - Produce nanofibers (ultra fine) with a diameter of 100 nm or less by using a multi-component fiber spinning process that allows control of a number of variables (including critical aspects of confinement dimensions, thermal history and interfacial chemistry).
- **Motivation:**
 - Large surface to volume
 - Unusual properties
 - “Confinement effects”
 - Size scale (potentially resulting in less defect sensitivity)
- **Applications:**
 - Confined polymer systems as implemented in melt-spun nanofibers have numerous potential applications in military systems, including clothing, shelters and airdrop equipment. Confinement effects may allow enhanced performance to be realized from commodity materials.



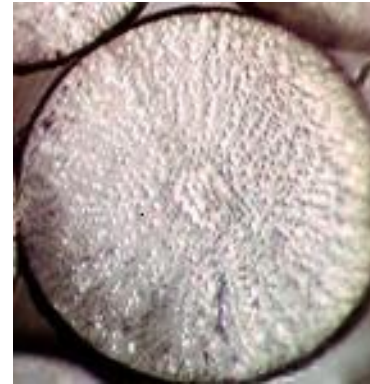
“Islands-in-the-Sea” Cross Sectional View Optical & ESEM Microscopes



Free fall or undrawn fiber

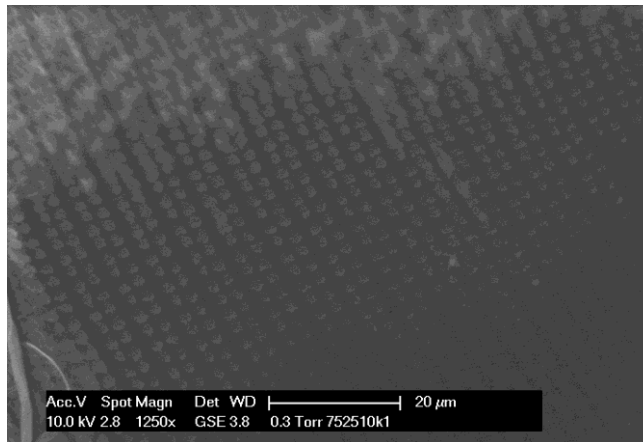


2010 INS
10% PP / 90% PE

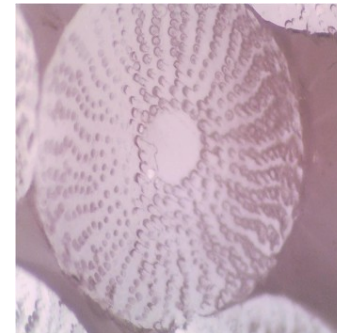


2010 INS
10% PP / 90% PLA

10,000 INS
25% PP /
75% PLA
ESEM Image



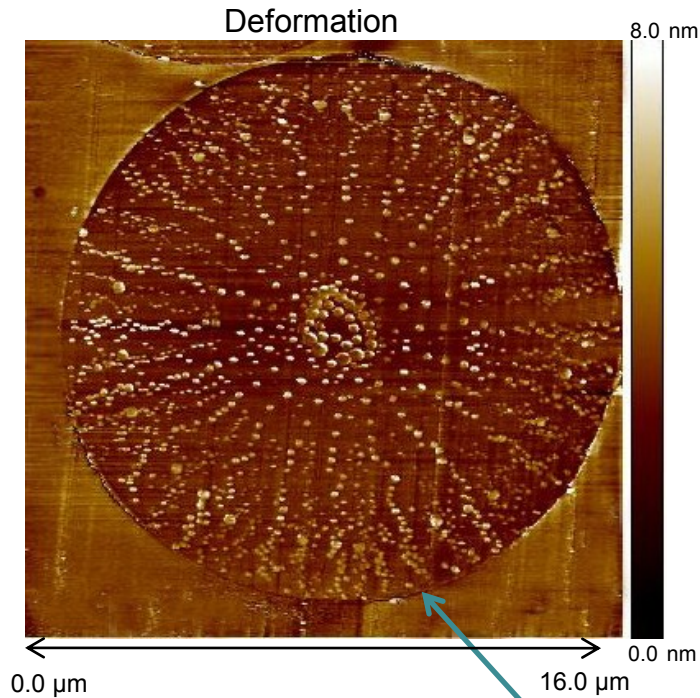
ESEM Image courtesy of M. Auerbach, NSRDEC



600 INS
10% PP /
90% PLA

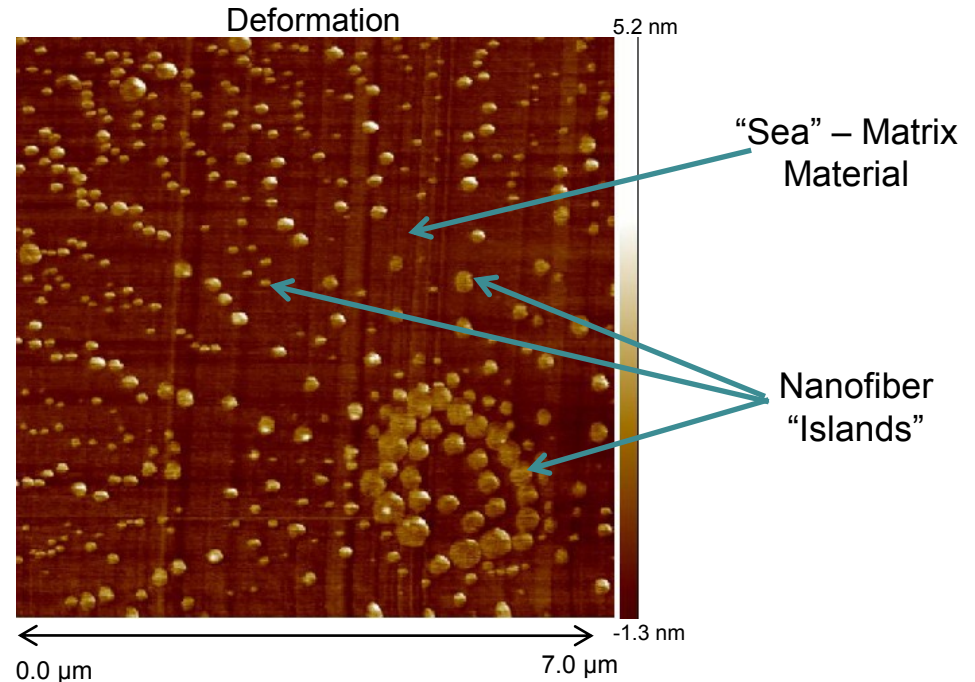


1200 INS
30% PP /
70% PLA



Approximately 2000 PP nanofibers shown in a cross section of a single filament

One Single Filament



One quarter cross sectional view showing approximately 470 PP nanofiber “islands” surrounded by PLA “sea” material

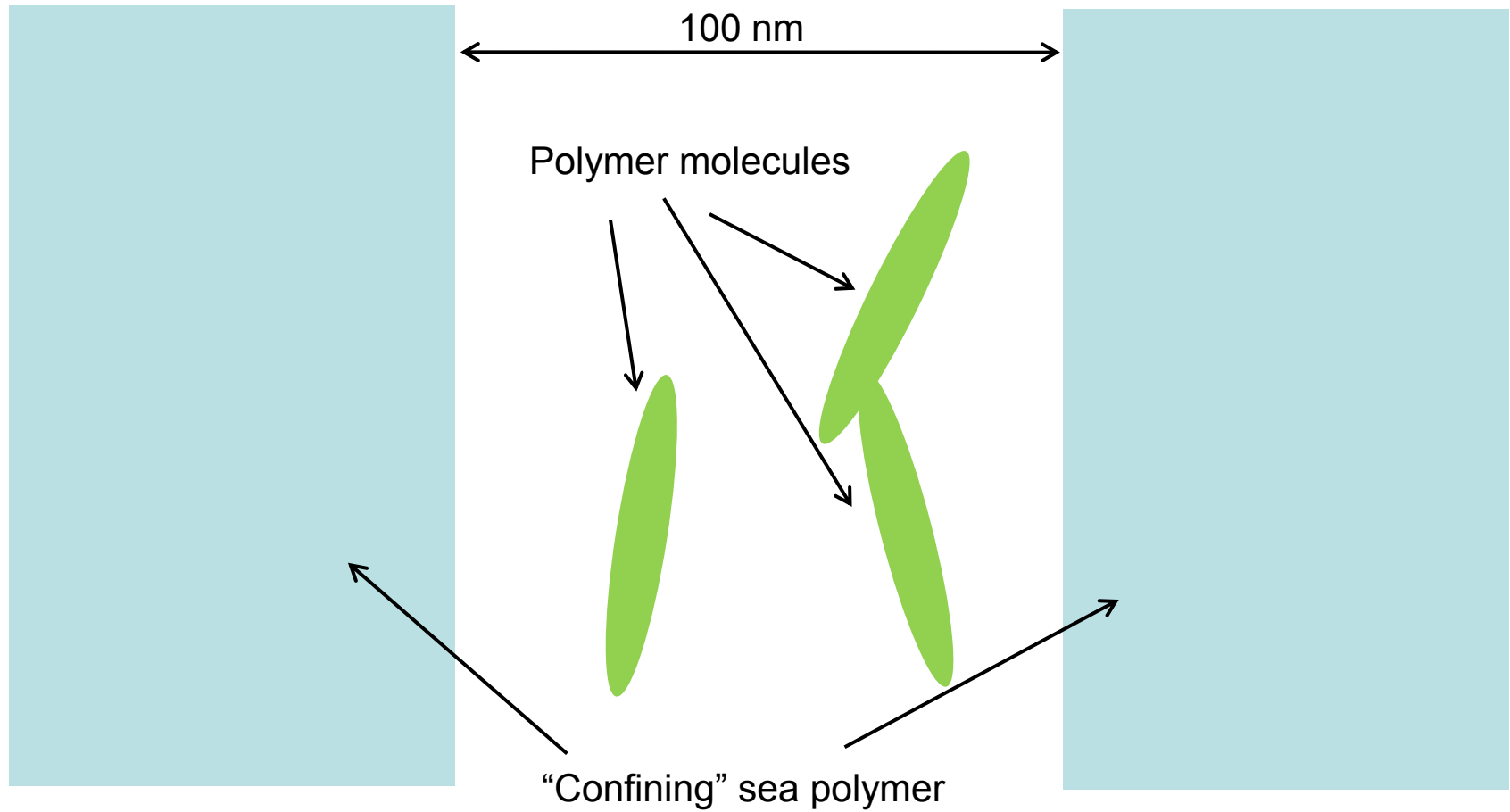
Spin packs are identified by the number of islands, 600, 2010, etc.



Confinement



- Growth of crystals is limited by the “island” size
- Polymer molecules influenced by the surface as the island gets smaller
- Used PP with a polydispersity index (PDI) M_w/M_n approx. 3-3.5 and molecular weight of 180,000 (*LyondellBasell Industries*)
- Radius of gyration (R_g) 14nm
 - Flory, “*Conformations of Macromolecules in Condensed Phases*”, pp.305-312, 1984
- Major axis = 49 nm
 - Theodoreau & Suter, “*Shape of Unperturbed Linear Polymers: Polypropylene*” *Macromolecules* 18, 1206-1214, 1985
- Jin et al. has found a size influence at 400 nm or less in multilayer extruded films

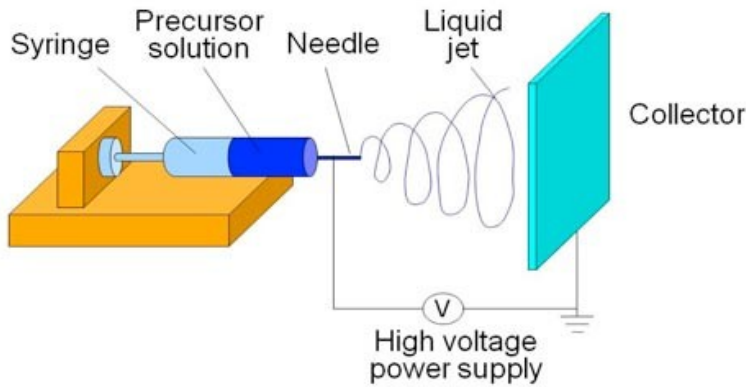




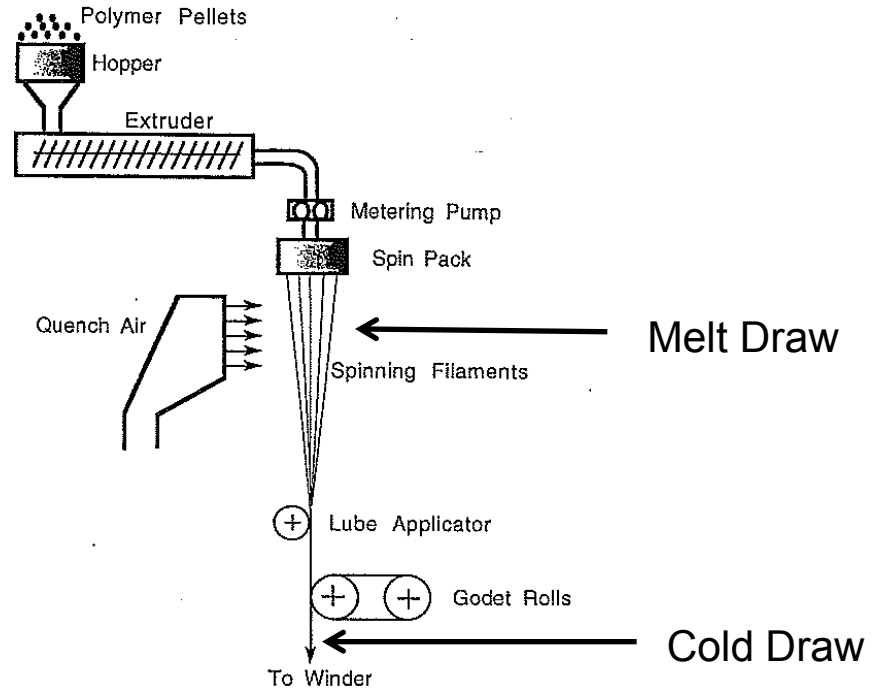
Previous Work



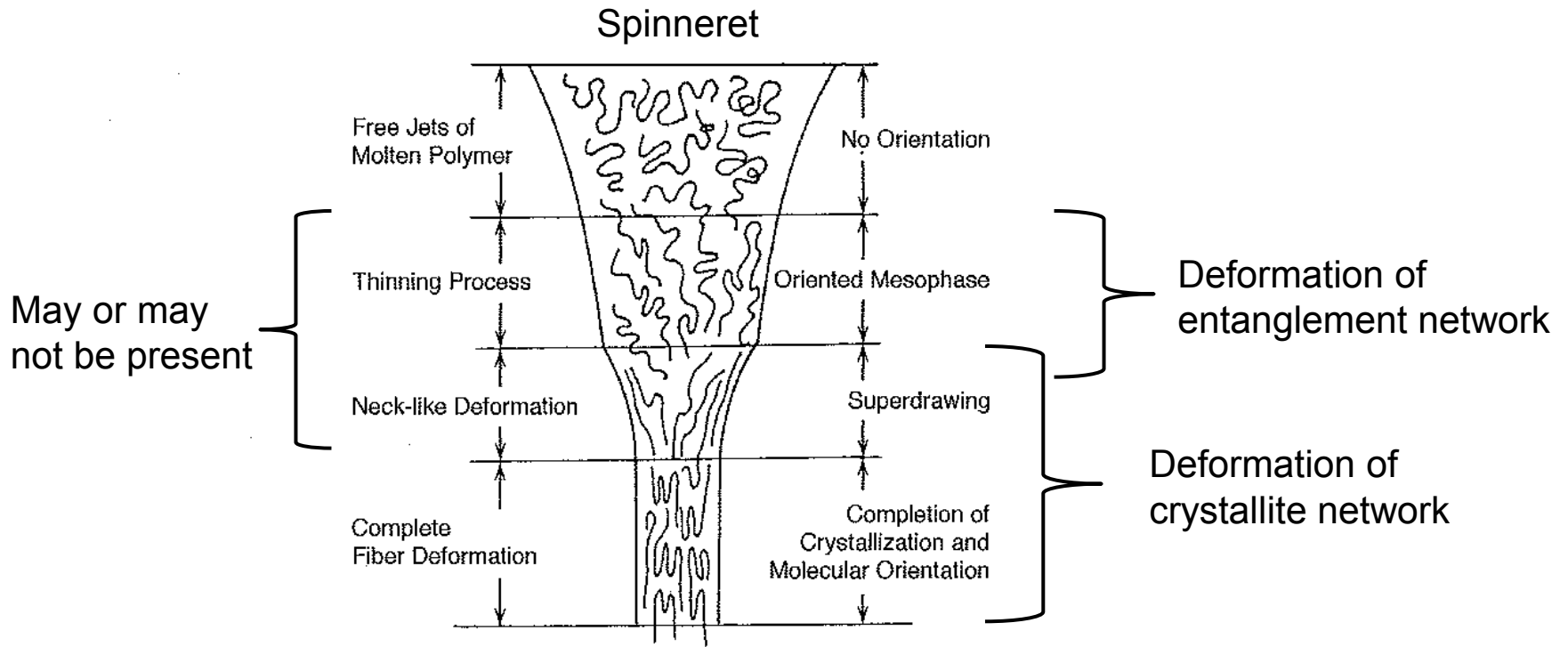
- Field is of growing interest and importance
- Many studies done on block copolymer systems
- Many studies on films and dispersed phases
- Few studies on fibers
- Few studies on melt-processed thermoplastics
- Few studies on homopolymers
- This study evaluates confinement effects produced in a “real world” process using commercial materials



Schematic view of electrospinning process.
Picture taken from Nanotechweb.org



Schematic view of melt spinning process.
Picture taken from Structure Formation in Polymeric
Fibers, D. Salem



Schematic model of the development of structure during high speed melt spinning of PET. (reference [124]).

After Spruiell, J. E. Structure Formation during Melt Spinning in Structure Formation in Polymeric Fibers, Salem, D. R. Ed. Hanser Munich 2000 p 59.

124. Shimazu, J. et al in High Speed Fiber Spinning, Ziabicki, A. & Kawai, H. Eds. Wiley, New York 1985 p. 429.



Processing



- Fibers were spun at Hills, Inc., Melbourne FL
- 72 filaments (spinneret holes)
- Air quenched
- Spin finish applied
- Over denier & Godet rolls to winder
 - Leeson winder 500 – 2000 m/min
 - BarMag winder 1500 – 5500 m/min
 - 5500 m/min = Mach 0.26
- Directly to winder



Approach / Polymers



- Use bi-component fiber spinning technology (Hills, Inc.,) to create confined small-scale domains
- High Islands-in-the-Sea (INS) fiber design (600 – 120,000)
- Polypropylene islands/Poly(lactic acid) sea
- Polypropylene islands/Polyethylene sea
- Bi-component fibers have been spun using PP as the confined polymer (island) and PLA or PE as the confinement phase (sea)
- Preliminary characterization of the fibers includes AFM, ESEM, DSC, and wide-angle X-ray diffraction
- Correlate morphology and properties as a function of confinement dimensions



Challenges



- How do we get down to 100 nm
 - Decrease the diameter island size by using low ratio islands, increased island count, and increased drawing
- Drawing
 - Increase the draw ratio to achieve lower deniers
 - In the melt by using a high speed (Oerlikon) Barmag winder (1500 – 5500 m/min)
 - Cold Draw
 - Processing over Godet rolls onto a (Leesona) filament yarn take-up winder (500 – 2000 m/min)
 - Post Draw
- Maintaining Fiber Geometry
 - WAXD and DSC show distinct phases



Diameter Calculations

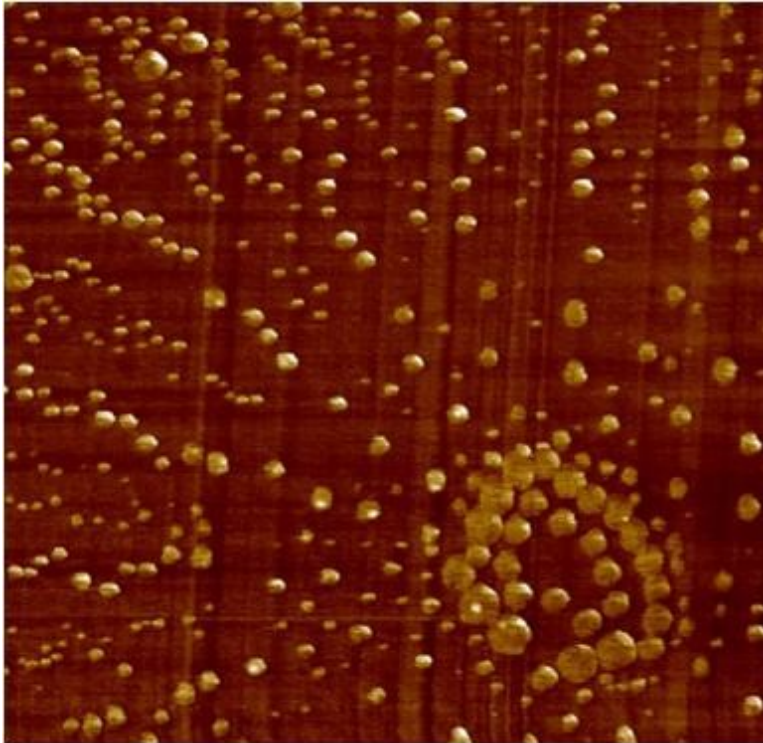


Drawn Fiber

Polymer System	PP/PLA	PP/PLA	PP/PE	PP/PE	PP/PE	PP/PE
	Godet	Barmag	Godet	Barmag	Post Drawn	Barmag
	Rolls	Winder	Rolls	Winder	Godet Rolls	PD - Godet
Denier	148	150	115	108	92	78
DPF	2.06	2.08	1.60	1.50	1.28	1.08
Island Diameter in Nanometers	127	128	112	108	100	92

Island Ratio	10%
# of Islands	2010
# of Filaments	72
Island (PP) Density (solid)	0.902

PP nanofibers diameter distribution



This view shows approximately 470 PP nanofibers

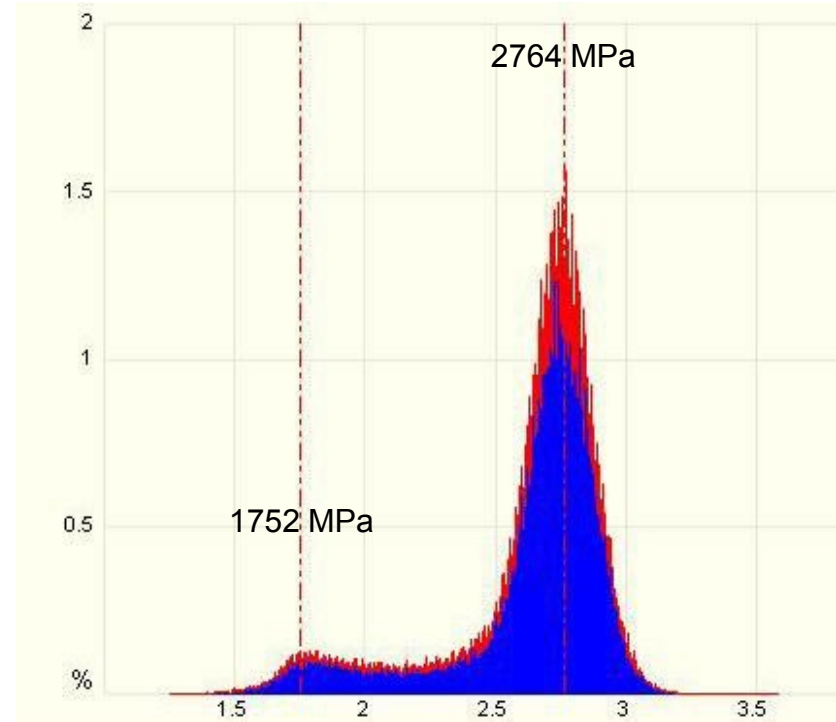
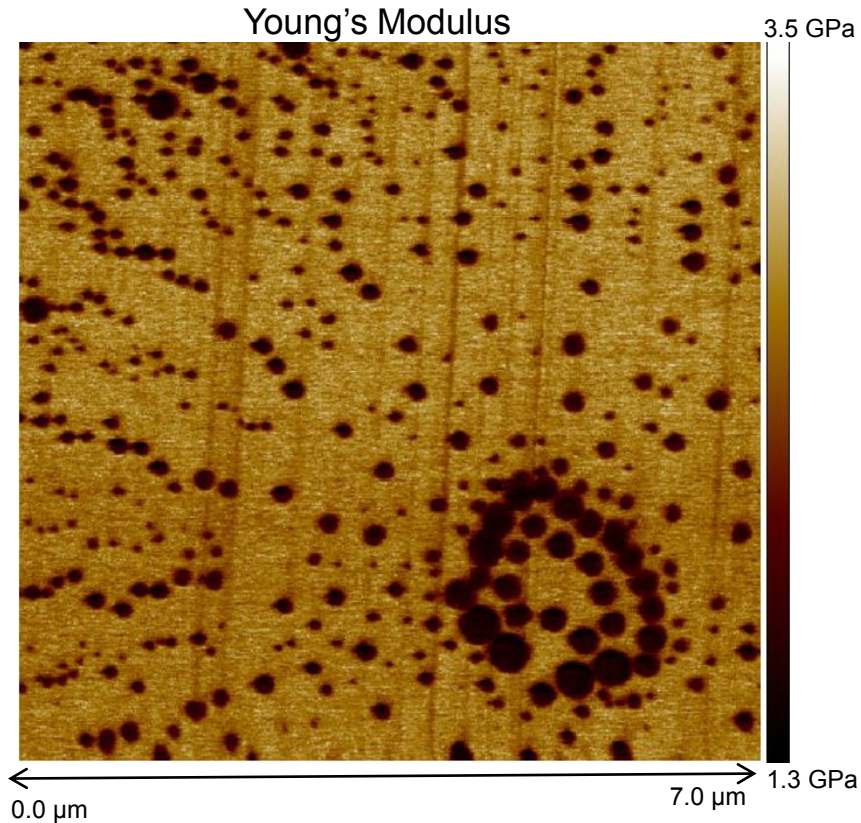
Mean Diameter 97 nm

Minimum Diameter 18 nm

Maximum Diameter for center cluster of nanofibers is 1636 nm

Image courtesy of Veeco Instruments

AFM cross sectional image of drawn single filament



Images courtesy of Veeco Instruments

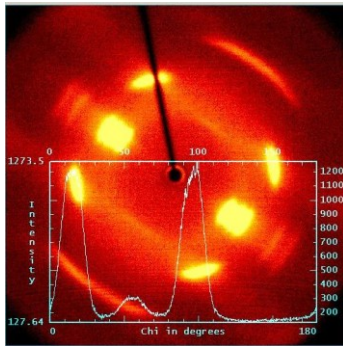


Wide-Angle X-ray Diffraction of Fibers Intensity vs. Chi

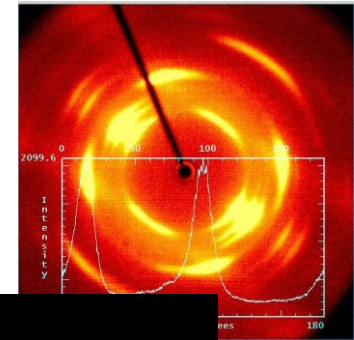


PP homopolymer

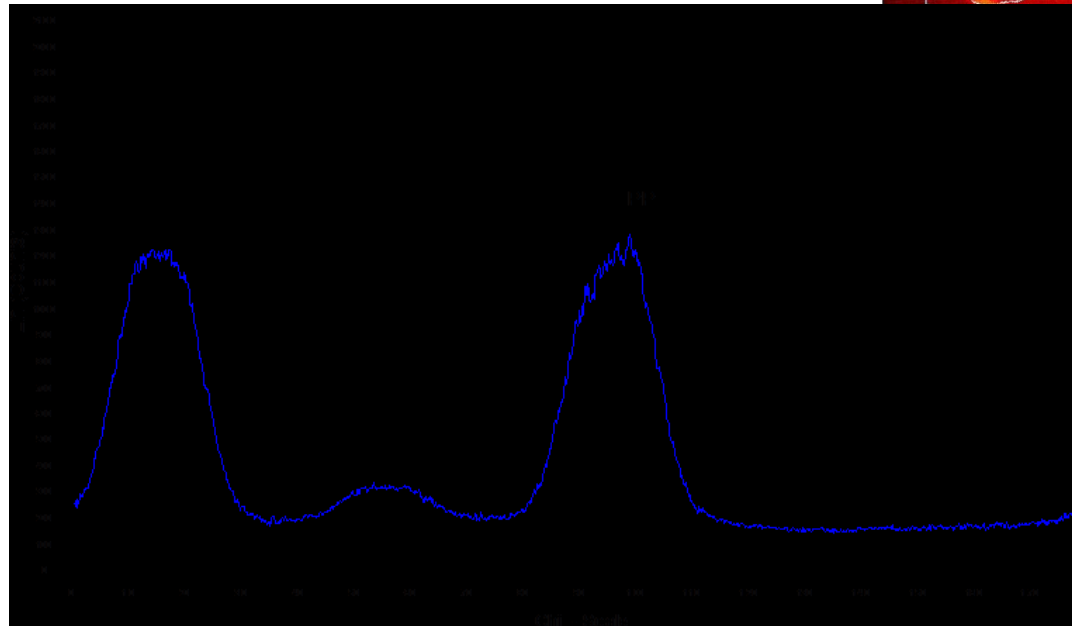
WAXD shows a high degree of crystallinity and orientation in the PP fiber.



Godet Rolls
Leesona Winder
Speed 1600 mpm



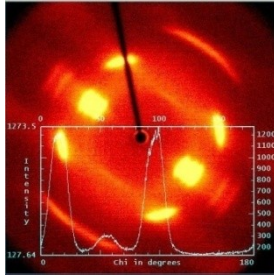
Winder
1000 mpm



Less oriented noted in PE fiber (sea)

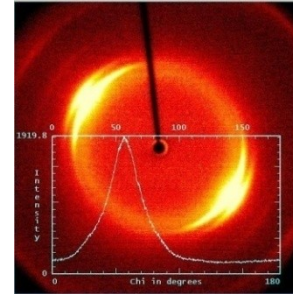
PP Control

Godet Rolls
Leesona Winder
Speed 1600 mpm

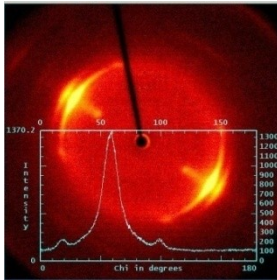


PE Control

Godet Rolls
Leesona Winder
Speed 1500 mpm

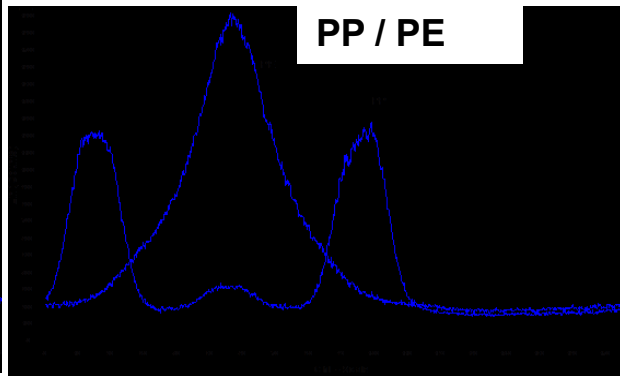
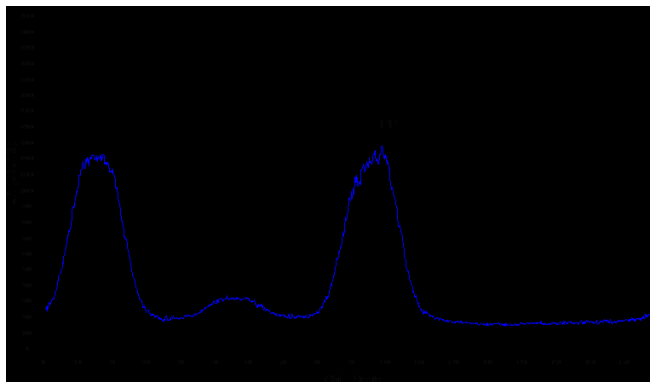
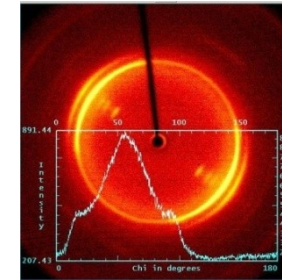


Godet Rolls
Leesona Winder
Speed 1700 mpm

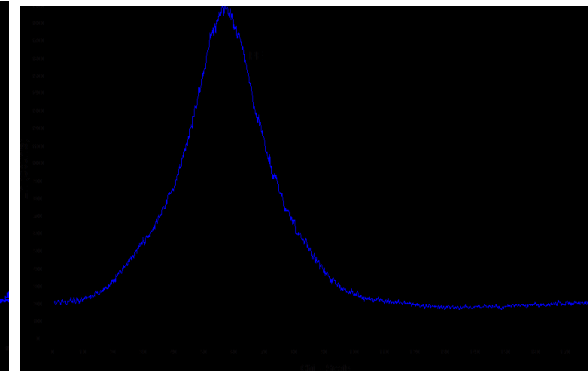


10% PP / 90% PE
←—————→

Barmag Winder
Speed 3000 mpm



PP / PE



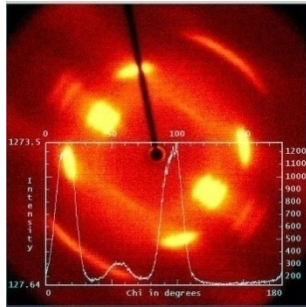


Wide-Angle X-ray Diffraction of Fibers Intensity vs. Chi



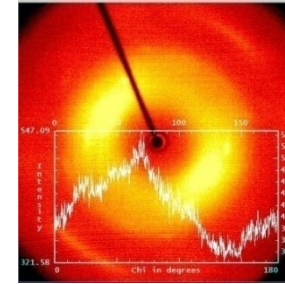
Amorphous PLA fiber (sea)

PP Control



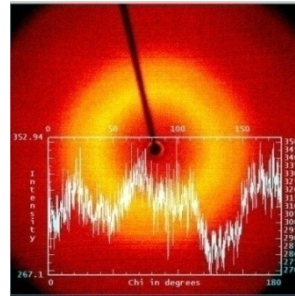
Godet Rolls
Leesona Winder
Speed 1600 ppm

PLA Control

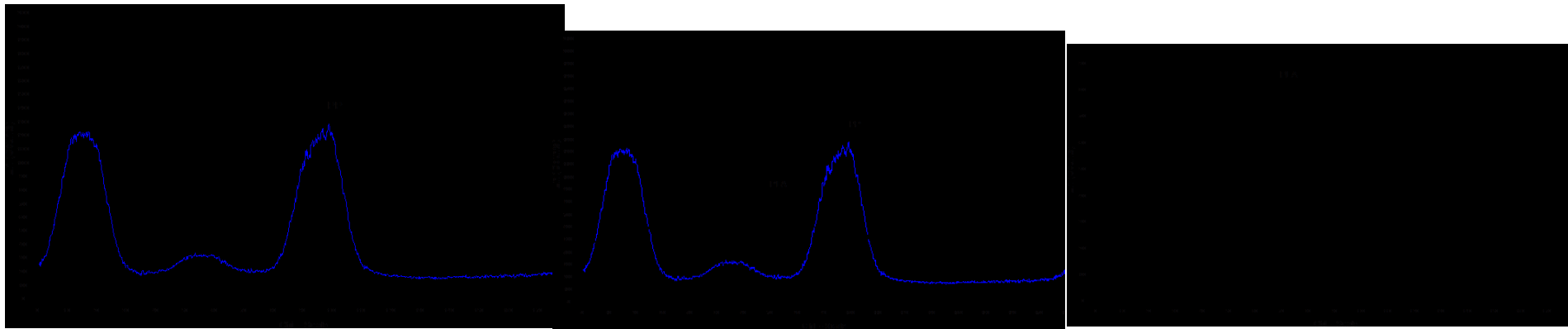


Godet Rolls
Leesona Winder
Speed 1400 ppm

10% PP / 90% PLA



Godet Rolls
Leesona Winder
Speed 500 ppm





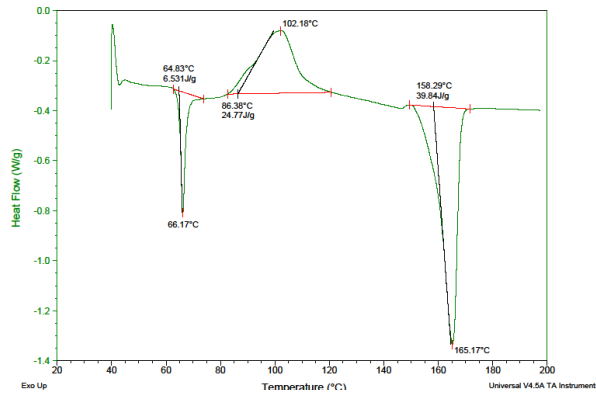
DSC Analysis



- A broad upward peak between 85C and peaking near 100C, corresponds to cold crystallization of PP
- The PP was partially prevented from crystallizing during processing
- Increasing island count appears to suppress the crystallization of the PLA
- Increase the draw – Increase the crystallinity of the PP

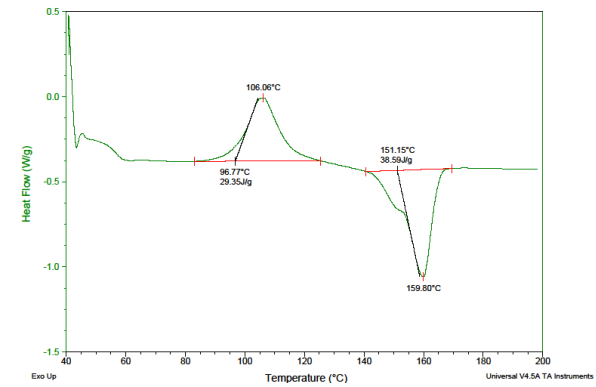
Decreasing Island Spacing or Higher Island Count \longrightarrow

600 INS Denier 3564 10% PP/90% PLA

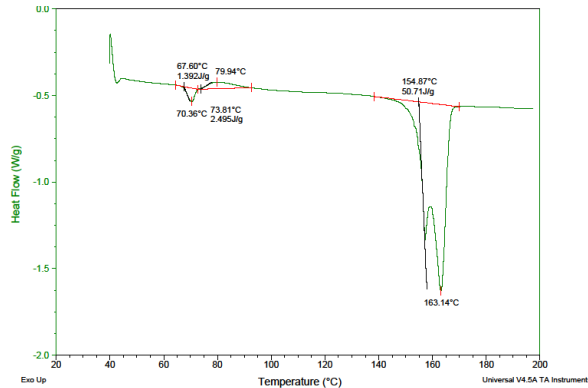


NO DRAW

1200 INS Denier 3620 10% PP/90% PLA

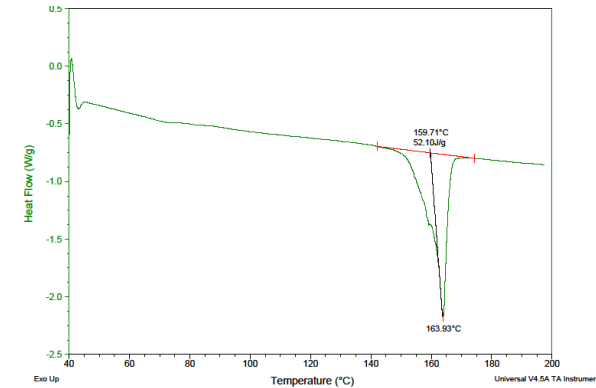


600 INS Denier 936 10% PP/90% PLA



DRAW

1200 INS Denier 511 10% PP/90% PLA





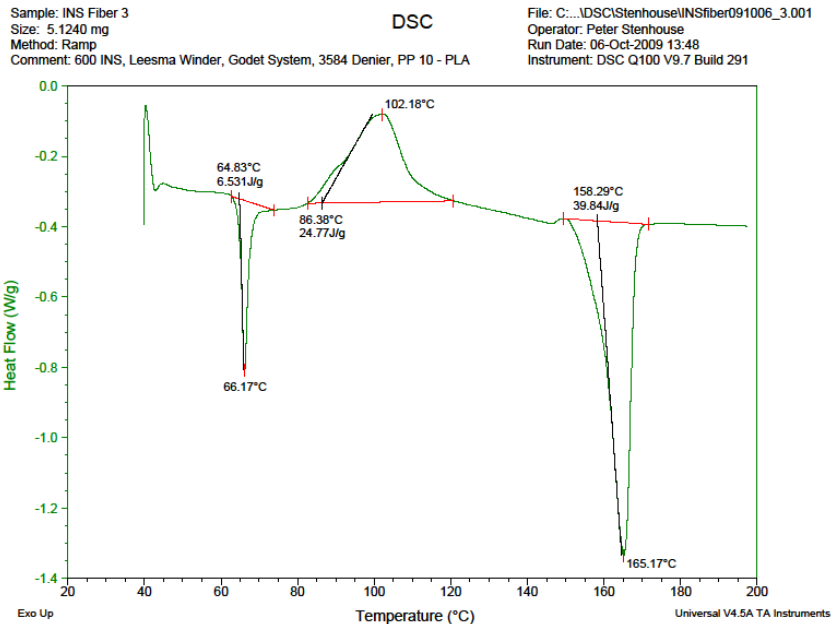
DSC Analysis



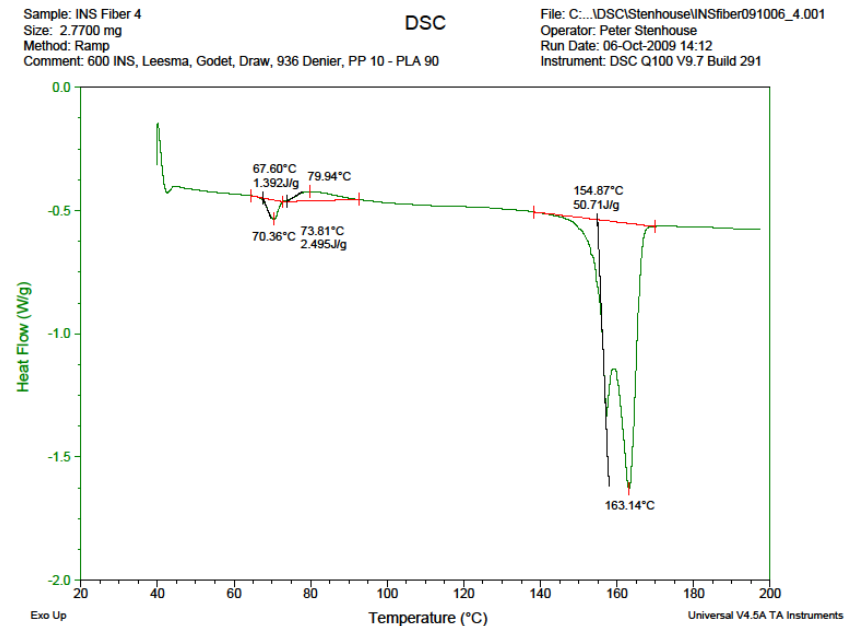
- A broad upward peak between 85C and peaking near 100C, corresponds to cold crystallization of PP
- The PP was partially prevented from crystallizing during processing
- Increasing island count appears to suppress the crystallization of the PLA
- Increase the draw – Increase the crystallinity of the PP

600 INS Denier 3564 10% PP/90% PLA

600 INS Denier 936 10% PP/90% PLA



NO DRAW



DRAW



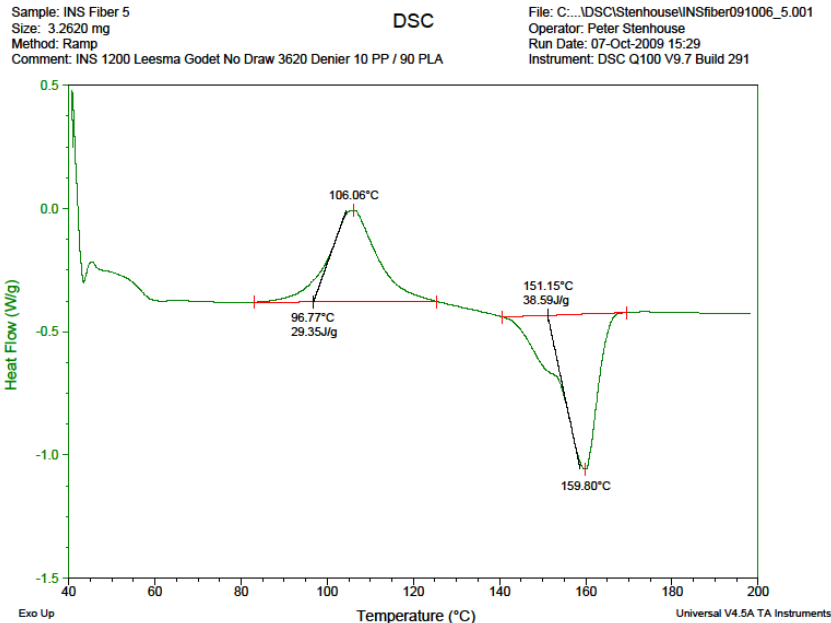
DSC Analysis



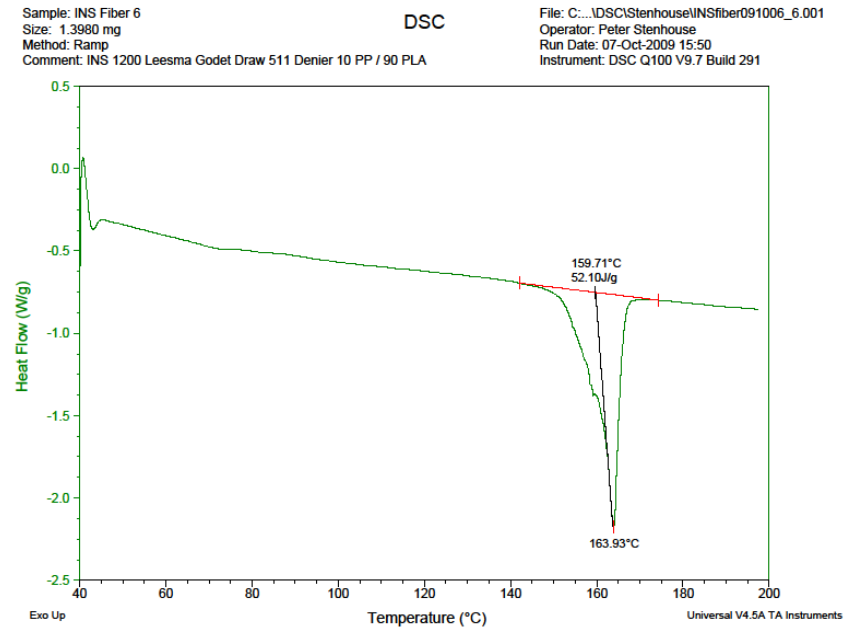
- A broad upward peak between 85C and peaking near 100C, corresponds to cold crystallization of PP
- The PP was partially prevented from crystallizing during processing
- Increasing island count appears to suppress the crystallization of the PLA
- Increase the draw – Increase the crystallinity of the PP

1200 INS Denier 3620 10% PP/90% PLA

1200 INS Denier 511 10% PP/90% PLA



NO DRAW



DRAW



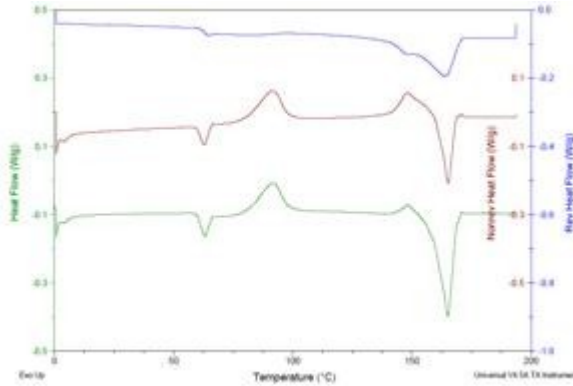
Modulated DSC Analysis



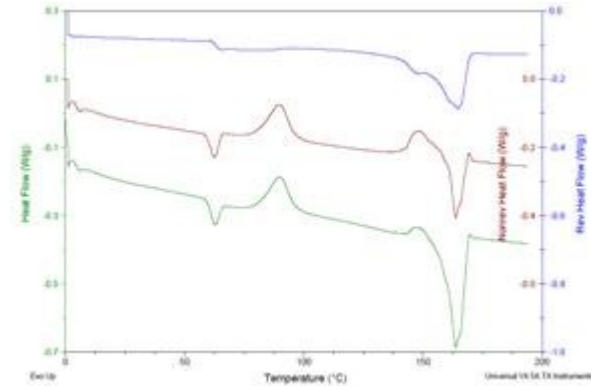
___HEAT FLOW ___NONREVERSING HEAT FLOW ___REVERSING HEAT FLOW

Crystallization of PLA is suppressed in post-drawn INS fibers

600 INS Denier 3564 10% PP/90% PLA

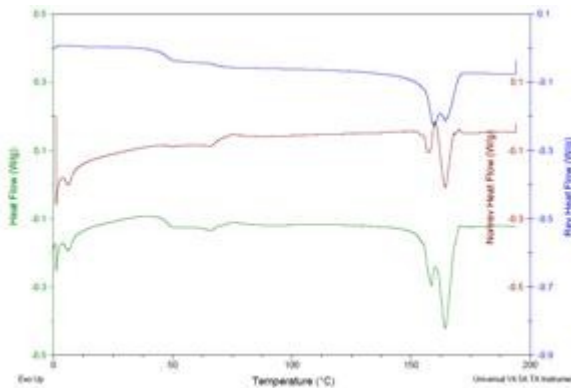


1200 INS Denier 3620 10% PP/90% PLA

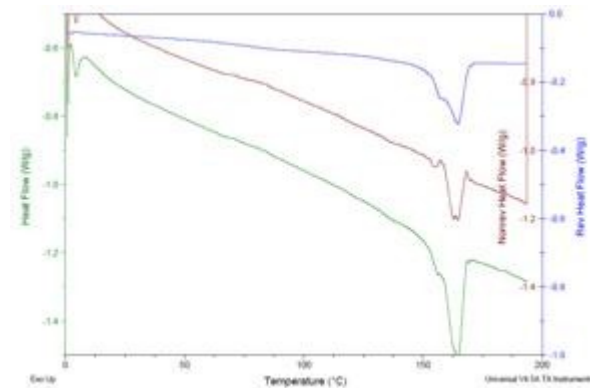


NO DRAW

600 INS Denier 936 10% PP/90% PLA



1200 INS Denier 511 10% PP/90% PLA



DRAW



Summary



- Based on calculations the diameter readings appear to be in the nano scale range from 92 – 150 nm
- Based on AFM analysis we believe we have spun approximately 100 nm or smaller diameter fibers
- WAXD and DSC show distinct phases of the polymers used in processing are still present
- Increasing island count appears to suppress the crystallization of the PLA
- Increase the draw – Increase the crystallinity of the PP
- No unique properties seen yet, but testing still underway



Acknowledgements



Jim Brang

Hills Inc., Melbourne, FL for expertise in fiber spinning

Veeco Instruments

for their expertise in imaging fiber samples with AFM

Approved for Public Release – PAO #

UNCLASSIFIED *TECHNOLOGY DRIVEN. WARFIGHTER FOCUSED.*