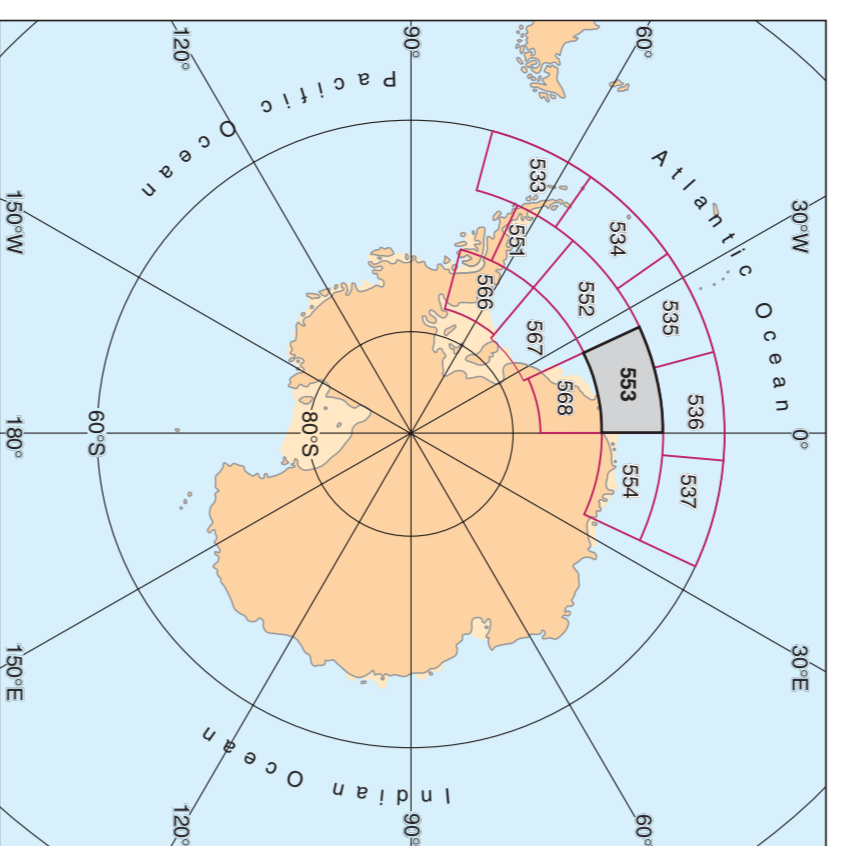
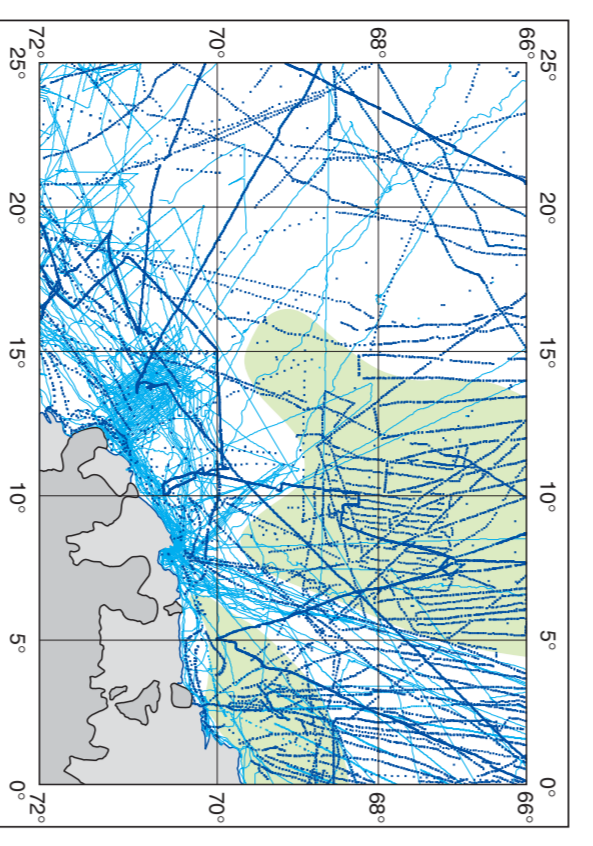


Sheet Index of the AWI BCWS



This chart is a bathymetric chart of the Weddell Sea, Antarctica, showing depth contours and continental features. It is part of the AWI Bathymetric Chart Series (BCWS) and is intended for use in navigation and scientific research. The chart is based on data from various sources, including satellite altimetry, shipborne surveys, and scientific expeditions. The chart is published by the Alfred Wegener Institute for Polar and Marine Research, Bremerhaven, Germany.

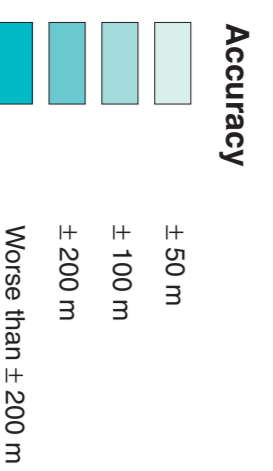
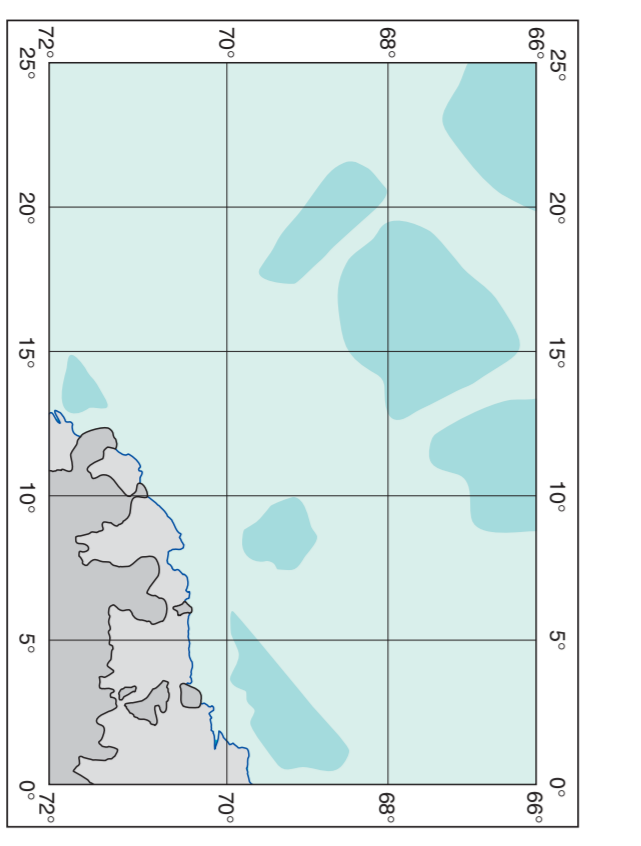
Data Sources and References



Data Source	Area	Time	Depth
ICESAT	Antarctica	2003-2009	0-1000 m
Hydrographic Observations	Antarctica	1950-2000	0-1000 m
Scientific Expeditions	Antarctica	1950-2000	0-1000 m
Geological Maps	Antarctica	1950-2000	0-1000 m

1. ICESAT (Ice, Cloud, and land Elevation Satellite) altimetry data, version 2, processed by the National Snow and Ice Data Center (NSIDC), Boulder, CO, USA.
2. Hydrographic Observations (HO) data, processed by the National Oceanic and Atmospheric Administration (NOAA), Silver Spring, MD, USA.
3. Scientific Expeditions (SE) data, processed by the Alfred Wegener Institute (AWI), Bremerhaven, Germany.
4. Geological Maps (GM) data, processed by the Alfred Wegener Institute (AWI), Bremerhaven, Germany.

Accuracy of Bathymetric Depths



The accuracy of the bathymetric depths is determined by the accuracy of the data sources and the processing methods. The accuracy is generally higher in areas with more data points and lower in areas with fewer data points. The accuracy is also affected by the depth of the water, with shallower waters generally having higher accuracy. The accuracy is also affected by the resolution of the data, with higher resolution data generally having higher accuracy.

